

# *Macnsons*

## Contracting Engineers

•  
PLUMBING — HEATING

Specialist in Radiant Heating

— Home Appliances —  
•

2301 Palm Avenue  
at East 25th Avenue

Fireside 5-1691  
SAN MATEO, CALIF.

R A D I O   B R O A D C A S T I N G

# K V S M



## THE VOICE OF THE PENINSULA

SAN MATEO, CALIFORNIA

TELEPHONE: DIAMOND 4-2541

"The Station That's Always Ahead of the Times"

# JOHN B. COCKCROFT & CO.



REALTORS & INSURORS

SPECIALISTS IN RESIDENCE, BUSINESS AND PROPERTY MANAGEMENT

SALES SUPERVISORS

SALES SUPERVISORS

SALES SUPERVISORS

PARROTT PARK

HOMEVIEW

MEADOW HEIGHTS

SAN MATEO

IN BELMONT

SAN MATEO



1440 BURLINGAME AVE.

DIAMOND 4-1778

BURLINGAME

REAL ESTATE

## ● Complete Insurance Service ●

322 Third Avenue - Diamond 3-3945 - San Mateo, Calif.



— B. L. —

— IRVING —

**GROW and DOUGHTY**

BROKERS

**WILLIAM S.  
 NIELSEN**

---

**REALTOR**



**EASTON REALTY COMPANY**  
 REAL ESTATE — FARM LANDS — INSURANCE



TELEPHONE DIAMOND 3-5659

1404 BROADWAY

BURLINGAME, CALIFORNIA

REAL ESTATE

**CHAS. E. PHILLIPS CO.**

**LICENSED BROKERS**



REAL ESTATE

INVESTMENTS

BUSINESS OPPORTUNITIES



229—2nd Ave.

San Mateo

Phone DI 3-3619

*"Growing through Service"*

# A. F. Sprague Co.

**REAL ESTATE BROKER**

1304 Broadway  
BURLINGAME



100 Hillcrest  
MILLBRAE

**TELEPHONES**

Millbrae  
OXFORD  
7-4433

Burlingame  
Diamond  
3-4972

Burl. Res.  
DIAMOND  
3-5223

**RUG SALES AND CLEANING**

## Derelian's Oriental Rug Cleaning Works

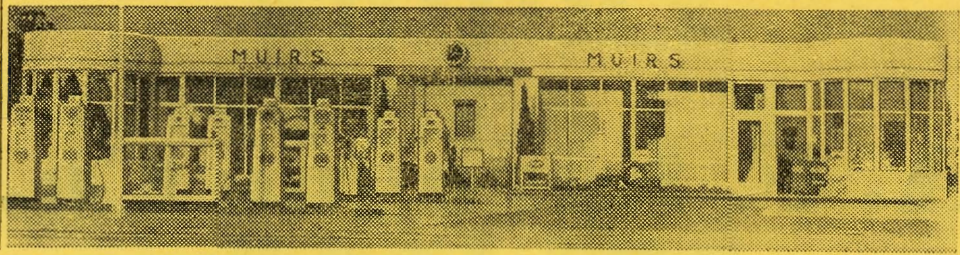
**MASTER WEAVERS AND REPAIRERS  
UPHOLSTERED FURNITURE CLEANED**

*Insured Protection While In Our Possession*

227 BALDWIN AVE.

SAN MATEO

PHONE 3-0287



- COMPLETE OVERHAUL
- MOTOR TUNE-UP
- IGNITION — STARTER & GENERATOR
- BRAKE RELINING & SERVICE
- TIRES, BATTERIES & ACCESSORIES

LUBRICATION — GAS — OIL

**OPEN ALL NIGHT**

PHONE

**Flreside 5-1802**

## **MUIR'S AUTOMOTIVE SERVICE**

2800 SOUTH EL CAMINO REAL

SAN MATEO

TELEPHONE ANSWERING SERVICE

DAY AND NIGHT

## **TELEPHONE ANSWERING SERVICE**

Trained Operators Answer Your Phone 24 Hours a Day  
A LOST PHONE CALL MEANS LOST BUSINESS

**PROFESSIONAL — BUSINESS — PRIVATE**

*A Direct Extension from Your Phone to Our Office*

WE TAKE AND RELAY MESSAGES

RECEIVE YOUR MAIL - BECOME YOUR SECRETARY

PROVIDE LOCAL REPRESENTATION WITH OWN TELEPHONE  
NUMBER & MAIL ADDRESS

**NIGHT - SUNDAY and HOLIDAY SERVICE**

Phone Diamond 3-5652

## **Telephone Answering & Secretarial Service**

Operating Secretarial Bureaus in California

SINCE 1920

517 SAN MATEO DRIVE

SAN MATEO

# Television Headquarters **CLARE KEMP**

*Diamond 3-4517*

GENERAL



ELECTRIC

## Appliances

- RANGES
- REFRIGERATORS
- SUNLAMPS
- BLANKETS
- MIXERS
- DISHWASHERS
- GARBAGE DISPOSALS
- TOASTERS
- ROASTERS
- COFFEE MAKERS
- WAFFLE IRONS
- WASHERS
- FANS
- IRONERS

Complete Electric Kitchen on Display

226 LORTON AVENUE

TAXI AND DELIVERY

24-HOUR SERVICE

# MILLBRAE YELLOW CAB CO.

Telephone Oxford 7-2050

404 Broadway

Millbrae, Calif.

# MILLBRAE CON-VER DELIVERY SERVICE

SCHEDULED AND SPECIAL DELIVERIES

*Serving the Peninsula*

9 a.m. to 9 p.m.

Telephone Oxford 7-2315

DAVE CONTE — BOB VERNA

404 Broadway

Millbrae, Calif.

HOME — 20 HILLCREST BLVD.

# VENETIAN BLINDS MADE TO ORDER

WOOD — STEEL — ALUMINUM

WINDOW SHADES & ROLL-AWAY SCREENS

NU-FRAME METAL FLAT SCREENS

TENSION SCREENS — WEATHER STRIPPING

*Cleaning - Repainting - Repairing*

FREE ESTIMATES

PHONE

**Diamond 4-0348**

## SAN MATEO VENETIAN BLIND CO.

1208 Terminal Place

San Mateo

•  
EXTRA COPIES OF THIS DIRECTORY

MAY BE OBTAINED FROM

COAST DIRECTORY CO.

FI 5-0495

P. O. BOX 218

SAN MATEO, CALIFORNIA

Or From SAN MATEO and BURLINGAME MERCHANTS ASSN., Ltd.

1204 Burlingame Avenue

DI 3-2775  
•

# BURLINGAME HILLSBOROUGH SAN MATEO CITY DIRECTORY 1948-49

Comprising an Alphabetical List of Business and Professional Firms and  
Individuals, All Residents Over the Age of Eighteen Years  
Schools, Churches, Etc., a Residence Directory and  
Street Guide and Classified Business Directory

with Added Section for Millbrae Residents

---

Compiled and Published by

**Coast Directory Co.**

Leila Woodmansee

P. O. BOX 218      PHONE FI 5-0495  
SAN MATEO, CALIFORNIA



Special Sales Agent:  
MERCHANTS ASSOCIATION  
1204 Burlingame Avenue  
Phone DI 3-2775  
BURLINGAME



Copyright, 1948, by The Coast Directory Company