

# Dohrmann Wolf Agency

GENERAL INSURANCE

Telephone 113

113 N. San Joaquin St., Stockton

609

## POLK'S SAN JOAQUIN COUNTY DIRECTORY 1937

Including Towns of Acampo, Banta, Bellota, Bethany, Clements, Escalon, Farmington, French Camp, Holt, Lathrop, Linden, Lockeford, Lyoth, Manteca, Middle River, Peters, Ripon, Thornton, Tracy, Vernalis and Woodbridge.

COPYRIGHT, 1937, BY R. L. POLK & CO.

### ACAMPO

Abersold Chas genl mdse rt 1 bx 242  
Acampo Fruit Growers Assn O L  
Bennett mgr PO bx 127  
" Winery Archie Cellini mgr  
Adams Guy farmer rt A bx 125  
" Ralph lab rt 1 bx 125  
Adolf Gottlieb farmer rt 1 bx 370  
Allen Thos farmer rt 1 bx 155  
Anagnos Peter farmer rt 1 bx 281a  
Anderson Alf N farmer rt 1 bx 320  
Armitano Bert farmer rt 2 bx 129  
Asay Arth farmer rt 1 bx 43  
" Ralph I farmer rt 1 bx 43  
Atchinson Mary Mrs rt 1 bx 415  
Bagley Wm farmer rt 1 bx 252  
Baker John M rt 1 bx 241  
" Lulu C rt 1 bx 241  
Ballantyne John rt 1 bx 265  
Batch Henry rt A bx 408  
Baumbach Lewis farmer rt A bx 275  
Bender Calvin A farmer rt 1 bx 387  
" Chas J farmer rt 1 bx 387  
" Edna M sten rt 1 bx 387  
" Eug G rt 1 bx 390  
Benedict Bert A farmer rt 1 bx 402  
Berglund Jonas N farmer rt 1 bx 272  
Bietz Gottlieb farmer rt 1 bx 26  
Billiardi John farmer rt A bx 124  
Biscoe Alf E farmer rt 1 bx 250  
Blakesley Amanda E nurse rt 1 bx 286  
" Lloyd P farmer rt 1 bx 286  
Blodgett Amy Mrs  
Bluck Wm rancher rt 1 bx 172  
Boone Frank genl mdse rt 1 bx 67  
Botts Beckie rt 1 bx 102  
" Harold R farmer rt 1 bx 102  
" Tennon A farmer rt 1 bx 324  
" Thos A orchardist rt 1 bx 290  
Bradley Harland O farmer rt 1 bx 308  
Bridge Rodney C slsmn rt 1 bx 10  
Brinson Earl E blksmth PO bx 217

Brown Eldred E rt 1 bx 99  
" Verona C rt 1 bx 99  
Buck Herbt farmer rt 1 bx 66  
Burson John C farmer rt 1 bx 227  
" Stanley F student rt 1 bx 227  
Bushman David D rt 1 bx 324  
Buss Gustav farmer rt 1 bx 158  
Caldwell Wilbur N rt 1 bx 11  
Callow Robt farmer rt 1 bx 170  
Carter Robt L pntr rt 1 bx 303  
Cellini Archie mgr Acampo Winery  
Clabaugh M Dora Mrs rt 1 bx 155  
Clancy Ellmore S farmer rt 1 bx 197  
" Hull J orchardist rt 1 bx 238  
" John H Justice of the Peace rt 1 bx 238  
Clark Perry O farmer rt 1 bx 40  
" W S farmer rt 1 bx 40  
Conklin Jas E tchr rt 1 bx 2  
Connolly Wm F farmer rt 1 bx 378  
Cooper Herbt M farmer rt 1 bx 240a  
Corell Harvey J farmer rt 1 bx 126  
Cossins J Byron farmer rt 1 bx 345  
" John W farmer rt 1 bx 338  
**COSTELLO ETHEL R, Postmaster**  
" Sarah M Mrs asst Postmaster  
Coveil Harvey J farmer rt 1 bx 126  
Cross Micajah farmer rt 1 bx 88  
Dargitz Earl N farmer rt 1 bx 101  
" Jesse L farmer rt 1 bx 209  
Davis Nelson farmer rt 1 bx 196  
Dement Wm H farmer rt 1 bx 117  
DeVinny R Harold vineyardist rt 1 bx 220  
De Witt J J farmer rt 1 bx 254  
Doherty John C farmer rt 1 bx 235  
Dollinger Jacob farmer rt 1 bx 40b  
Duncan Arth farmer rt 1 bx 183  
Dunton Amos vineyardist rt 1 bx 436  
Dustin Eliza Mrs rt 1 bx 281  
Eddleman Ambus O jr farmer rt 1 bx 114

Eddleman Chester A farmer rt 1 bx 71  
Eltringham John farmer rt 1 bx 357  
Emslie Eric E farmer rt 1 bx 287  
Ezeloth Frank farmer rt 1 bx 168  
Fairchilds Chas C farmer rt 1 bx 206  
Fasig Hallie S farmer rt 1 bx 263  
Fink Ernest H jr vineyardist rt 1 bx 278  
Floyd Walter A farmer rt 1 bx 41  
Garberogilo Saml vineyardist rt 1 bx 128  
" Secondo lab rt 1 bx 129  
Geislyer Rudolph farmer rt 1 bx 180  
Gentner Christian E farmer rt 1 bx 334  
Goodrich Edwin C farmer rt 1 bx 146  
" John E farmer rt 1 bx 146  
Gordon Arth E farmer rt 1 bx 365  
" Neil H farmer rt 1 bx 365  
Graffigna John farmer rt 1 bx 255  
Graves Benj W farmer  
Gray Porter S farmer rt 1 bx 17  
Grentz Benj farmer rt 1 bx 6  
Griboado John farmer rt 1 bx 307  
Griffith Garnet R farmer rt 1 bx 175  
Grover Bradley tchr rt 1 bx 254  
Hackman Mary Mrs rt 1 bx 66  
Hamsher Francis R farmer rt 1 bx 324  
Hansen Aug farmer rt 1 bx 155  
" Geo P rt 1 bx 61  
Hartman Jos rt 1 bx 418  
" Wm farmer rt 1 bx 418  
Herron Thos lab rt 1 bx 362  
Hibbs Edw L farmer rt 1 bx 236  
Hildebrand Steph D fruit grower bx 45  
Hildenbrand Paul farmer rt 1 bx 112  
Hoffman Chas M farmer rt 1 bx 103  
" Verne W tchr rt 1 bx 200  
Holbrook Chas D farmer rt 1 bx 42

Cushman Gasoline Engines  
Pumps — Hoists — Electric Light Plants

Bob-a-Lawn Power Mowers

# THOMAS R. BROWNE

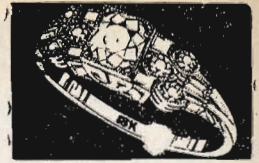
POWER MACHINERY

826 E. Main St., Stockton

Telephone 1962



WE BUY OLD GOLD AND PAY CASH  
**PESCE & CO.**  
 "CREDIT JEWELERS"



Also Men's Clothing on Credit  
 211-213 E. WEBER AVENUE, STOCKTON TEL. 256

610

(1937) R. L. POLK & CO'S

**ACAMPO—Contd**

Hollenstein Ray C C lab  
 Holt Alvin B farmer rt 1 bx 69  
 Hops Harold T mail carrier  
 " John genl mdse bx 175  
 Hoskins John D farmer rt 1 bx 160  
 Howard Annette Mrs vinydst bx 418c  
 Howery Archie T lab  
 Islip Wm E farmer rt 1 bx 276  
 Jack Geo R farmer rt 1 bx 195  
 " Karl C rt 1 bx 195  
 Jackson Oscar C farmer rt 1 bx 169  
 Jacobs Boyd I orchardist rt 1 bx 55  
 Jahant Ella musician rt 1 bx 382  
 " Jennie farmer rt 1 bx 382  
 " Walter V farmer rt 1 bx 383  
 Jensen Mada farmer rt 1 bx 339  
 Johnson Albt lab rt 1 bx 145a  
 " Bertha Mrs rt 1 bx 145a  
 " Ila R tchr rt 1 bx 145a  
 Jorz John B farmer rt 1 bx 85  
 Keeling Jos C  
 " Lloyd J lab PO bx 212  
 " Oscar M lab  
 Kessler Clarence E farmer rt 1 bx 212  
 Kiriaze Peter rt 1 bx 331  
 Kirschenmann Theo farmer rt 1 bx 297  
 Klinger Lawrence L orchardist rt 1 bx 312  
 " and Strickland vinydsts rt 1 bx 312  
 Koenig Fred farmer bx 389  
 Koris Perry rancher bx 358  
 Krupp Geo W farmer rt 1 bx 231  
 Langford Jas T farmer rt 1 bx 191  
 Lerza John J rt 1 bx 258  
 Lewis Geo H farmer rt 1 bx 423a  
 Lind Carl T farmer rt 1 bx 355  
 Litchfield Walter farmer rt 1 bx 87a  
 MacGaben Alf B farmer rt 1 bx 42  
 Manassero Michl jr farmer rt 1 bx 81  
 Mann Max A lab rt 1 bx 88  
 Manna John farmer rt 1 bx 417  
 " Michael farmer rt 2 bx 413  
 Markey Thos J lab bx 215  
 Marsili Wm farmer rt 1 bx 412  
 Mason Raymond E farmer rt 1 bx 35  
 May Wm B farmer rt 1 bx 404  
 McKinney Lewis farmer rt 1 bx 336b  
 McTucker Jas lab rt 1 bx 513  
 Meier Aug farmer rt 1 bx 46  
 " Wm F farmer rt 1 bx 57  
 Melchert Hugo W farmer rt 1 bx 144  
 Merrill Jos F farmer rt 1 bx 336a  
 Mertz Friedrich farmer rt 1 bx 34  
 Miller David F farmer rt 1 bx 108  
 " Franklin M student rt 1 bx 108  
 " Martin O orchardist rt 1 bx 108  
 Mills Claude E farmer rt 1 bx 429  
 " Luther farmer rt 1 bx 432  
 Miner Wm A farmer rt 1 bx 256  
 Minetta Frank farmer rt 1 bx 433  
 Mirko Mathew farmer rt 1 bx 232  
 Myers Chas W farmer rt 1 bx 381  
 Nelson Peter farmer rt 1 bx 268  
 Nielson Jens farmer rt 1 bx 22

Nies Edw farmer rt 1 bx 56  
 Olson Chas V farmer rt 1 bx 131  
 Pearson Wake W farmer rt 1 bx 13  
 Peck Calvin N farmer rt 1 bx 336  
 " Chauncey N farmer rt 1 bx 336  
 Peiker Paul R farmer rt 1 bx 59  
 Pierce Jas A farmer rt 1 bx 113  
 Pope Clara Mrs farmer rt 1 bx 21  
 " Emma Mrs rt 1 bx 21  
**POST OFFICE, Ethel R Costello Postmaster**  
 Putney Jessie M Mrs nurse rt 1 bx 11  
 Reese Amos P farmer rt 1 bx 91  
 " Erma B tchr rt 1 bx 91  
 Reiner Wm J farmer rt 1 bx 70a  
 Rinaudo Frank farmer rt 1 bx 185  
 Robertson Wm farmer rt 1 bx 407  
 Rocco Jos lab  
 Salaun Edw I lab bx 134  
 " Isador lab bx 184  
 " Roy P lab bx 233  
 Sanguinetti Fred J farmer rt 1 bx 349  
 " Lena nurse rt 1 bx 349  
 " Stefano farmer rt 1 bx 349  
 Schaffer Karl farmer rt 1 bx 38  
 Scheideman Lena bx 147  
 Schierer Adam A farmer rt 1 bx 222  
 Schmierer Edmund E farmer rt 1 bx 24  
 Schobert Anna H Mrs rt 1 bx 306  
 " Lee A farmer rt 1 bx 306  
 Seibel Conrad L farmer rt 1 bx 13 9  
 " Gustav C lab rt 1 bx 139  
 Sheaffer Brady M farmer rt 1 bx 174  
 Sheppard Edgar M driver rt 1 bx 371  
 Shinn Wm A farmer bx 214  
 Siegalkoff Oscar W farmer rt 1 bx 231  
 " Oscar W jr farmer rt 1 bx 231  
 Sims Wm M lab rt 1 bx 205  
 Small Marvin mail msnger  
 Smith Platt farmer rt 1 bx 127  
 Smithson Lewis V farmer rt 1 bx 333  
 " Melvin B farmer rt 1 bx 333  
 " Otto H farmer rt 1 bx 335  
 Stafford Minnie J bkpr rt 1 bx 78  
 " Pearl tchr rt 1 bx 78  
 " Roy clk rt 1 bx 78  
 Steele Benj A farmer rt 1 bx 184  
 " J C Clifton dairy rt 1 bx 367  
 Storz Carl farmer rt 1 bx 1  
 Stribling Chas E farmer rt 1 bx 332  
 Strickland Silas orchardist rt 1 bx 312  
 Strother Gertrude Mrs farmer rt 1 bx 392  
 Struckenbruck Ellroy G County Supervisor 4th Dist rt 1 bx 98  
 Taylor Howard B vinydst rt 1 bx 62  
 Terra Francisco L dairymn rt 1 bx 92  
 " Lionel A farmer rt 1 bx 92  
 Thien Marshall J lab bx 194  
 Thompson Chas W PO bx 166  
 Tonn Emanuel L lab rt 1 bx 350  
 Utterback Jos carp rt 1 bx 100  
 Valente Jos rt 1 bx 315  
 Villiborghi Louis farmer rt 1 bx 397  
 Vossler Adam farmer rt 1 bx 79

Vossler Fred rt 1 bx 82  
 Votaw Clarence farmer rt 1 bx 118  
 " Margt A Mrs rt 1 bx 118  
 Wade Mark C boxmkr rt 1 bx 209  
 Wagenmann Danl rt 1 bx 396  
 " Fred farmer rt 1 bx 373  
 Wagner Frank B farmer rt 1 bx 110  
 Wakefield Andw E farmer rt 2 bx 262  
 " J W farmer rt 1 bx 259  
 " Lloyd F farmer rt 1 bx 73  
 " Orion E rt 1 bx 259  
 Walter John carp rt 1 bx 386  
 Wardrobe Alf D farmer rt 1 bx 253  
 Wencel Paul farmer rt 1 bx 422  
 Westfall Geo farmer rt 1 bx 271  
 Wilson Wm H vineydst rt 1 bx 210  
 Wiltse Floyd mech PO bx 237  
 Winship Granville W farmer rt 1 bx 204  
 Woest Chas H rt 1 bx 39  
 Woodall Ethel Mrs PO bx 183  
 " Geo B carp  
 Woodson O lab rt 1 bx 361  
 Wright Arch S farmer rt 1 bx 273  
 Yenglin Jas H farmer rt 1 bx 406  
 Young Arth G farmer rt 1 bx 282

**BANTA**

(See Tracy, also, Lathrop)

Baker Chas lab  
 Bastiao Antonio farmer  
 Batterman Christopher M farmer  
 Belfa Frank A farmer bx 11  
 Bettencourt Jos C dairymn  
 Borges Alex dairymn  
 " Frank A dairymn  
 " John S dairymn  
 Bricchetto Irene L dom  
 " Jos C capitalist  
 " Luiga  
 " Minnie  
 Canale Benj P genl mdse and Constable  
 " Jennie Mrs  
 Castro Manuel M farmer  
 Cavala Anthony J farmer  
 Cecilian Albt C farmer  
 " Jas farmer PO bx 37  
 " Jos mech  
 Chiappe Marie B tchr Pub Sch  
 Clitoni S dairymn  
 Colli Joe dairymn  
 " John dairy  
 Costello Toney dairy  
 Emhoff Albt farmer  
 Faggi A farmer  
 Feeney Edna prin Pub Sch r Tracy  
 Pistolera Candido farmer  
 Gallagher John R dairymn  
 Gallejo Reinaldo lab  
 Goodpasture Joe mech  
 Gukan Tony farmer  
 Jacks Frank farmer  
 Joseph Manuel farmer  
 Lund Geo farmer

**For 80 Years BREUNER'S**

HAVE BEEN HEADQUARTERS FOR HOME FURNISHINGS

Main St. at Hunter

Stockton

Telephone 6800

# PEIRANO BROS. & CO.

22 S. Sutter Street, Phone 432

Stockton, California

SAN JOAQUIN COUNTY DIRECTORY (1937)

611

Muller Henry farmer  
 Nortridge Bros (Chas and Thos) farmers  
 " Chas (Nortridge Bros)  
 " Thos (Nortridge Bros)  
 Owen Lillie C Mrs tchr Pub Sch r Stockton  
 Pereira Anthony A farmer  
 Poco Peter farmer  
**POST OFFICE, Jos Sanguinetti Postmaster**  
 Raspo Frank J genl mdse  
 " Jos J genl mdse  
 Rhodes Harry A farmer  
 Sandin Robt lab  
 Sandlin Alf lab  
 " Wm M woodchopper  
 " Wm S lab  
 Sandling Wm lab  
**SANGUINETTI JOS, Postmaster**  
 Short Merritt M blksmith  
 Silva Anton dairymn  
 " Manuel farmer  
 Snider Cleo T eng  
 Stauffer Alex lab  
 Steinmetz Geo A farmer  
 " Louis F jan  
 " W Aug farmer  
 Varela Juan lab  
 Welsher Omer S farmer bx 51  
 Widmer Jos hay baler  
 Wilson Walter lab  
 Young Iola S Mrs tchr Pub Sch r Stockton

**BELLOTA**

(Post Office Linden)

Anderson Albt Supt Bellota Operating Co  
 Armanino Joe farmer  
 " John farmer  
 Bellota Operating Co Albt Anderson supt  
 Cady E E sheepmn  
 Cody Chas lab  
 Donelon Thos farmer  
 Eckfield Chas poultrymm  
 Echeverry Barnard farmer  
 Field Alonzo G farmer  
 " B farmer  
 " Chas W farmer  
 " Jas C farmer  
 Hoag Amel  
 Purviance Saml J farmer  
 Vigna John lab  
**WALKER SYDNEY E, Genl Mdse**  
 Watkins Alf G farmer  
 " Jas G farmer  
 Webb Jesse W farmer  
 " Robt A formn  
 Zatonni Mary orchardist

**BETHANY**

(See also Tracy)

Boltzen Henry farmer

Henderson Wm E farmer  
 Kirkman Nurseries  
 Lammers Wm farmer  
 Lindemann Henry farmer  
 Looney Cornelius E farmer  
 Ohlendorf Alvin farmer  
 Patterson Walter W farmer  
 Ray Geo J farmer  
 " Jas G farmer  
 Saxover Jacob gas sta  
**SCHLICHTMAN CLAUS, Genl Mdse**  
 Shearer Saml A farmer

**CLEMENTS**

(See also Lockeford)

Allison Robt G lab  
 Anderson Silas F lab  
 Athearn Frank F rancher  
**ATHEARN WILLIAM P, Postmaster and Grocer**  
 Atkins Allen rancher  
 " Marshall L rancher  
 " Nova (wid D M) rancher  
 Ayers Herbt V genl mdse  
 Bamert E T rancher  
 " Loren rancher  
 Barton Geo A rancher  
 Batzer Herman R confy  
 Beck Clayton rancher  
 " Frank H rancher  
 Blanton Adeline Mrs  
 Blewett Henry E rancher  
 Bracebiglione S blksmith  
 Brandt Harold rancher  
 " Louis L rancher  
 Bresee Louis H lab  
 Brown Minnie J Mrs  
 Cahill Ed rancher  
 " Emmett lab  
 Child C rancher  
 Chrisman G A (Gertrade) (Chrisman & Clements)  
 " " & Clements (G A Chrisman G R Clements) genl mdse  
 Christy Geo J rancher  
 Clements Geo R (Chrisman & Clements)  
 " Hop Field L G Taylor foremn  
 " Hotel (A Galluzzi)  
 " Margt  
 Costa Chas rancher  
 Culver Francis M rancher  
 " Wm E rancher  
 Davies Carl lab  
 " Wm lab  
 Dill Elbert rancher  
 " Herbt W rancher  
 " Raymond C rancher  
 Dornan Albt lab  
 " David W butcher  
 " Robt lab  
 Fahner Christ rancher  
 Featherstone Ren S rancher  
 Fitzgerald Andw A rancher  
 Galluzzi A (Clements Hotel)  
 Gaskill Herbt S

Gersbacher Barre E rancher  
 Gibson Clyde M rancher  
 " Danl C rancher  
 Gordon Clarence E mach  
 Gribauda Giuseppe rancher  
 " John M rancher PO bx 153  
 " Louis rancher PO bx 153  
 Hansen Clara nurse  
 Harris Jos rancher  
 " Thos M rancher  
 " Wm S rancher  
 Hart Albt F poultrymm  
 " Annie Mrs rancher  
 Hodges Geo F rancher  
 Howland John F rancher  
 Huer J C garage  
 Jones Wendell rancher  
 Keebler Julius C rancher  
 " Julius N rancher  
 Kerr Thos  
 King Anna (wid Jos) rancher  
 Kissel Alphonse rancher  
 Kroenecke Peter barber  
 Lane J Kenneth rancher  
 Lucas Leslie H rancher  
 " Merrill rancher  
 " Ralph rancher  
 Magee H S  
 Maitia John rancher  
 Mark Howard rancher  
 Markey Benj F lab  
 Martell Susie (wid G A) rancher  
 Mathews L A G Mrs rancher  
 Megre Phillip H rancher  
 " Robt rancher  
 Mehrten Angle (wid Danl) rancher  
 " Chas orchardist  
 " L C lab  
 " Lester R rancher  
 " Marshall rancher  
 " Otto L rancher  
 Miller Clinton lab  
 " Edw rancher  
 " Hiram J lab  
 " Isaac N rancher  
 " John W rancher  
 " M Mrs rancher  
 Mitchell J B rancher  
 Morrow Walter rancher  
 Murdock Winfield C rancher  
 Murphy J Alonzo rancher  
 Myers Phillip G rancher  
 Nelson Geo A lab  
 Payne E mech  
 Perry Richd A rancher  
 Pirie Alex rancher  
 " Wm rancher  
 Pitzer J lab  
 Plasse Louis R butcher  
**POST OFFICE, Wm P Athearn, Postmaster**  
 Putnam Edwin A rancher  
 " Lawrence E rancher  
 Reasoner Clarence A garage  
 Rodgers Emil W mech  
 Rozzoni Louis rancher  
 Sample Lester lab



**HIGHWAY GARAGE**

Phones 566-567

Tracy, California



**720 N. EL DORADO ST.**

Phones 801-802

Stockton, California



# AL P. LABRUCHERIE

Telephone 3649

Chas. C. Roe  
Owner



Manufacturers of  
A-C and D-C ARC  
WELDING  
EQUIPMENT

1930 Linden Road

Stockton, California

612

(1937) R. L. POLK & CO'S

**CLEMENTS—Contd**

Schultz Aug H  
Semminario F sheep breeder  
Sievers Peter F rancher  
Smart Millard F barber  
Smith Chas F rancher  
"Leva M Mrs tchr  
Stabell Louis F rancher  
"Paul L rancher  
"Viola A  
Stacey Arth D rancher  
"Lloyd W rancher  
Steely Chas A rancher  
"John W (Geraldine) rancher  
"Jos E mech  
"Marcus rancher  
Struckman Vera Mrs rancher  
Swett Oscar A lab  
Taylor Earl lab  
"Louis G formn Clements Hop Field  
Thompson M rancher  
"Marion E rancher  
Wallace Oliver M rancher  
"Walter B rancher  
Weber Chas O rancher  
"Melvin lab  
Weiblim Frank rancher  
Wenzelburger Chris rancher  
"Fred C rancher  
Zahn Ed lab

**ESCALON**

Abatti J farmer rt 1 bx 35  
Abernathy Chas farmer rt 1 bx 5a  
Adams Ella (wid Wm E)  
"F K farmer rt 2 bx 179  
Adrian Arth F farmer rt 2 bx 99  
Agostini Americo A farmer rt 2 bx 146  
"Angelo farmer rt 1 bx 165  
"Jos G farmer rt 2 bx 146  
Alba Grape & Fruit Co PO bx 112  
Albertoni Richd farmer rt 1 bx 142  
Allasia Carlo lab rt 2 bx 134a  
Allen Arth B farmer rt 1 bx 76  
Allwein Raymond farmer rt 2 bx 154a  
Altamirano Walter S lab genl del  
Ambra Frank lab Alba Winery PO bx 174  
"Justis A farmer rt 2 bx 185  
Anderson Andw E carp genl del  
"Bine lab genl del  
"Carl E farmer rt 2 bx 19  
"Carl R mech O C Hathaway genl del  
"Chas farmer rt 2 bx 108  
"J Martin (Amelia) dry gds PO bx 193  
"Joe lab genl del  
"Wm farmer rt 1 bx 128  
"Wm F (Esther) (Escalon Land Co) PO bx 285  
Applequist A E farmer rt 1 bx 198a  
"Aug W farmer rt 2 bx 105  
"Carl W farmer rt 2 bx 93  
Arlington Wm A (Lucy) (Santa Fe Sand & Gravel Co) PO bx 271

Ash Clifford lab rt 2 bx 175a  
Atchison Topeka & Santa Fe Ry Co  
"C A Shyrook agt PO bx 205  
Augusto John farmer rt 1 bx 112  
Ayers Wm E lab PO bx 246  
Azevedo J farmer rt 1 bx 78  
Bacigalupi John farmer genl del  
Baggezzi Chas farmer rt 2 bx 30  
Bailance Robt farmer rt 1 bx 97  
Baillie L D farmer PO bx 72  
Balch Joe W farmer rt 1 bx 172d  
Balina Salvina farmer rt 2 bx 174f  
Ballatore D farmer rt 1 bx 211  
Barclay Peter farmer rt 1 bx 117  
Barger Jas E farmer rt 1 bx 71e  
Barkley Theo W prin Escalon Grammar Sch PO bx 173  
Barnes Fred E farmer rt 2 bx 139  
Barnett Stella tchr Escalon Union High Sch PO bx 152  
Barth C H mgr Peerless Milling Co PO bx 212  
Barton Herbt W orchardist rt 2 bx 56  
"Robt P farmer rt 2 bx 56  
Bartoni Pete farmer rt 1 bx 41a  
Batten John farmer genl del  
Baumbach Jacob formn Geo Emde  
Bava Giovanni farmer rt 1 bx 136  
Beekwith Harvey E farmer rt 1 bx 46a  
Beeler Adolph farmer rt 1 bx 12b  
"J A farmer rt 1 bx 116  
Beeson R L farmer genl del  
Bender Arno (Escalon Home Bakery) PO bx 225  
"Dorothy Mrs PO bx 83  
Benson Ralph W Mrs farmer rt 1 bx 35a  
Berg G E farmer rt 2 bx 84  
Bergen Oscar H (Genevieve) carrier PO rt 2  
Berglund Chas A sec formn Santa Fe PO bx 194  
Bergstrom Caroline (wid A G) bx 214  
Bertoni Americo farmer rt 1 bx 44  
Bettecher A farmer rt 1 bx 193a  
Betti Louis farmer rt 2 bx 43  
Bisby Chas H farmer rt 2 bx 25c  
Bishop Arth farmer rt 2 bx 101  
"Roscoe L (Lucy E) farmer genl del  
Blackman E R farmer rt 2 bx 128  
Blackmore Bernard L (Eliz) genl mdse PO bx 232  
"Francis farmer rt 1 bx 106  
"Richd mech rt 2 bx 24  
Blakesley Archie (Blanche) driver PO bx 47  
"Blanche Mrs (Escalon / Beauty Shop) PO bx 47  
"Elsea A farmer rt 1  
"Jas L farmer rt 2 bx 20  
"Josiah E farmer rt 1 bx 100  
Blank Vincent farmer rt 1 bx 34  
Blixt Automotive Service (F E Blixt) PO bx 56  
"F E (Blixt Automotive Service) PO bx 56

Boldt Foster L (Madge) confy PO bx 23  
"Wm L (Laura A) farmer rt 1 bx 8  
Boles Geo V Mrs farmer rt 1 bx 145  
Bollinger A J farmer rt 1 bx 167  
"Arth G farmer rt 1 bx 186  
Bom Adie Mrs rt 1 bx 110a  
Bonelli B farmer rt 1 bx 47  
Bonzy Peter farmer rt 2 bx 42a  
Boyd Saml farmer rt 1 bx 114  
Brady Emil lab rt 2 bx 167b  
Bram Carl farmer rt 2 bx 15  
Bratton Jas R farmer rt 2 bx 49  
"Robt S farmer rt 2 bx 49  
Brayton Carl T (Eliz) bldg contr PO bx 95  
Breakfield M farmer rt 2 bx 127  
Brekke B J farmer rt 1 bx 207  
Brem Henry W farmer genl del  
Brennan Goldie M Mrs tchr PO bx 94  
"Jos M farmer rt 1 bx 86  
"Minerva E farmer rt 1 bx 139  
"Steph E lab PO bx 94  
"Steph J lab PO bx 164  
Britt Robt W farmer rt 2 bx 85  
Brum Frank farmer rt 1 bx 71a  
Bryant Bert lab rt 2 bx 69  
"John B farmer rt 2 bx 151  
Buck K D farmer rt 2 bx 169a  
Buehler Otto farmer rt 2 bx 37  
Buell Mary rt 2 bx 127  
Buerer H W farmer rt 1 bx 194a  
Burgess Ray farmer PO bx 206  
Burkett J B farmer rt 2 bx 63a  
Burnett C E eng PO bx 155  
Burns Carl R farmer rt 2 bx 172e  
"Geo farmer rt 1 bx 143a  
Cadollo Chas (Lila) (Valley Inn) PO bx 191  
"Louis farmer rt 1 bx 208  
Caldwell Jas farmer rt 1 bx 94  
Cambra Joe farmer rt 1 bx 89a  
Camoirano Lorenzo farmer rt 1 bx 43  
Campbell Alf F farmer rt 2 bx 164  
"John M Justice of the Peace Dent Township PO bx 221  
"John W farmer rt 1 bx 206½  
"Winfield G farmer rt 2 bx 161  
Cancelli Nicholas farmer rt 2 bx 45  
Cannon Chas R farmer rt 2 bx 139  
"Lee C farmer rt 2 bx 171  
Cardoni P farmer rt 1 bx 35  
Carlson Chas M (Carlson & Peterson) ins PO bx 224  
"Harry M (Florence) yd formn Moorehead Lbr Co  
"John F farmer rt 2 bx 5  
"Oscar farmer rt 2 bx 2  
"& Peterson (C M Carlson Otto Peterson) real est  
Carrico Saml W farmer rt 1 bx 24a  
Carter Harold E tchr Escalon Union High Sch PO bx 23  
Casey Matt A (Texas Serv Sta) rt 2 bx 1  
Catron Dewey farmer PO bx 276  
Cembrano P farmer rt 1 bx 25b

Personnel Service

General Insurance

# LOGAN'S BUSINESS SERVICE

PUBLIC STENOGRAPHER — NOTARY PUBLIC — MIMEOGRAPHING  
Office Phone 30 105 E. Weber Ave., Stockton

# NORTHWESTERN MUTUAL FIRE ASSOCIATION NORTHWEST CASUALTY COMPANY

No Better Insurance Protection Obtainable, and at a Saving  
COMPLETE SERVICE — REPRESENTATIVES THROUGHOUT CALIFORNIA  
District Headquarters: 202 Bank of America Building, Stockton Telephone 281

SAN JOAQUIN COUNTY DIRECTORY (1937)

613

Central Meat Market (Noe Sironi)  
PO bx 125  
Cerisa Joe lab rt 2 bx 153  
Chalk I E farmer rt 1 bx 172bb  
Chalmers P J farmer rt 1 bx 107b  
" Raymond N farmer rt 1 bx 94  
Chase Arth V farmer rt 1 bx 66  
Chastain T W farmer rt 2 bx 117b  
Chinn Thos farmer rt 1 bx 99  
Christian Science Church  
Christenson Fred farmer rt 1 bx 98a  
Cimpanelli Louie farmer rt 2 bx 112b  
Clarizio Silvester farmer rt 1 bx 131  
Clark John R farmer rt 1 bx 204  
" M Manning (Sadie A) farmer PO  
bx 248  
Cline John farmer rt 2 bx 165a  
Clough Martha H Mrs farmer rt 2  
bx 21  
Cochran C B farmer rt 2 bx 43a  
Coddling Howard lab rt 2 bx 35  
Coggins Marian farmer rt 1 bx 151  
Cole Clement E farmer rt 1 bx 139  
" Lemuel N farmer rt 2 bx 103  
Coley Clarence M farmer rt 2 bx 39  
Colson Jas W farmer rt 2 bx 188  
Combs Walter L farmer rt 2 bx 125  
Conti Antonio farmer rt 2 bx 147  
Cook Wm F farmer rt 2 bx 60  
" Wm L farmer rt 1 bx 163  
Coolidge A D farmer rt 2 bx 112a  
Cooper J C variety store PO bx 275  
Cope C M farmer rt 2 bx 63  
Cosgriff Elma S rt 1 bx 65  
" Mathew J farmer rt 1 bx 65  
Covarrho Manuel V farmer rt 1 bx 132  
Cowan J S (Porter Sand & Gravel  
Co) rt 2 bx 29  
Cowles R T printer Escalon Times  
PO bx 131  
Cox C H truck driver  
Craig W farmer rt 1 bx 95  
Crandal Sadie  
Crisp Chester E farmer rt 1 bx 57  
" Harold E farmer rt 1 bx 57  
Crocco Jas S farmer rt 2 bx 29  
Crockett Squire farmer genl del  
Crouse Arnold Mrs rt 1 bx 212a  
Curci Saverio farmer rt 2 bx 146a  
Cushing A tchr Escalon Grammar Sch  
PO bx 153  
Daggett Jessie E rt 2 bx 78  
Dahlin C W farmer rt 2 bx 11  
" Gilbert farmer rt 2 bx 22  
" Herman farmer rt 2 bx 22  
" J Albt farmer rt 2 bx 11  
" Leonard E farmer rt 2 bx 11  
Dalander Swain A  
Darmanian B farmer rt 2 bx 86b  
Daubenbis Henry J farmer rt 1 bx 26  
Davis Grace W Mrs tchr Escalon  
Grammar Sch r Oakdale  
Dawson Ralph W farmer rt 2 bx 174  
DeBattisti Romeo O rt 2 bx 119  
" Rudolph F farmer rt 2 bx 119  
DeBora J H farmer rt 1 bx 6b  
Deck Jacob R farmer rt 1 bx 205

Degerman Harry farmer rt 1 bx 69  
" John H farmer rt 2 bx 100  
DeHay Arnold A farmer rt 1 bx 54  
Del Don W A farmer rt 1 bx 64  
DeLuca R (Escalon Winery) PO bx  
176  
DeMassey Mike golf professional genl  
del  
Demichelis Jas farmer rt 1 bx 160  
" John farmer rt 1 bx 160  
" Jos farmer rt 1 bx 160  
Derickson C V farmer rt 1 bx 196  
" Stewart farmer  
De Rose V J farmer rt 1 bx 63  
Derrick Lynn farmer rt 2 bx 149a  
DeWit H G lab rt 1 bx 46  
Dias A G farmer rt 2 bx 95  
Dickson W W farmer rt 2 bx 154  
Diede Ted lab rt 1 bx 9a  
Dilley Guy farmer rt 2 bx 33  
" Wm H farmer rt 2 bx 86a  
Dillingham Carl D (Dora) gro PO bx  
204  
Dimille A lab rt 1 bx 47  
Doekter Christ farmer rt 1 bx 182  
Donadio M farmer rt 2 bx 16  
Dorwin Aug R farmer rt 2 bx 62  
Doveri M rt 1 bx 172ddd  
Dovichi Joe farmer rt 1 bx 25c  
Droge Carl H farmer rt 2 bx 166b  
" Claus farmer rt 2 bx 71  
Dubacher H farmer rt 2 bx 184  
" Joe slsmn B L Remington Ford  
Sales & Serv  
Due Albt J farmer rt 1 bx 161a  
Dughi David farmer rt 1 bx 9  
Dugo T (Escalon Garage)  
Durand F farmer rt 1 bx 164  
Edwards Bernard farmer rt 2 bx 191  
Eggink D J farmer rt 1 bx 52  
Ekhholm Henry W (Amanda) carrier  
PO rt 1  
" Julia (wid Peter)  
EKHOLM PAUL A, Asst Postmaster  
Eliason Ralph T clk Escalon State  
Bank  
Eller Jos farmer rt 2 bx 178  
Ellis A H farmer rt 1 bx 194a  
Elsholz Chas farmer rt 1 bx 161  
Emzerian C winery rt 1  
" G  
Erickson Carl R ranch hd rt 2 bx 34  
" Franklin B farmer rt 2 bx 6  
" Geo B farmer rt 2 bx 6  
" John farmer rt 2 bx 83  
" Nels farmer PO bx 288  
Escallonia Chapter No 477 OES Mrs  
R Ballance sec  
Escalon Barber Shop (Marcus Mar-  
tely) PO bx 67  
" District Chamber of Commerce  
Perry Stockless sec PO bx 257  
" Drug Store (LeRoy Gammon) PO  
bx 292  
" Electric (A E Hanson) PO bx 236  
" Fire Dept Harry Carlson chf

Escalon Fire District W F Stroble  
Frank Sigelhoff Arno Bender  
comrs bx 277  
" Garage (T Dugo) rt 1 bx 213a  
" Grammar School  
" Health Center (P Morse) rt 2 bx  
194  
" Home Bakery (Arno Bender) PO  
bx 225  
" Hospital P Von Hungen phys PO  
bx 223  
" Hotel (Mrs Lydia Stockel) PO bx  
162  
" Land Co (W F Anderson) PO bx  
285  
" Library Mrs Effie Mitchell librn  
PO bx 85  
" Lodge No 591 F & A M Paul Ek-  
holm sec  
" Lumber Co C C Moorehead mgr  
PO bx 283  
" Parent-Teachers Club Mrs Paul  
Svendsen pres  
" Park Commission L A Johnson  
chairmn  
" Poultry & Egg Co (F M Kohne)  
" Relief Society B L Blackmore pres  
PO bx 243  
" State Bank S J Irwin pres Esther  
Strand cash PO bx 242  
" Times P B Stickle editor PO bx  
257  
" Union High Sch E B Gardner prin  
PO bx 243  
" Warehouse (O Rampoldi)  
" Water & Light Co G A Wallace  
sec bx 135  
" Winery (S C San Filippo R De  
Luca) PO bx 176  
" Woman's Improvement Club rt 1  
bx 151  
Evans Ed lab rt 2 bx 133a  
" Mary B rt 2 bx 149c  
Evinger J L farmer rt 1 bx 104  
Farcoz F farmer rt 1 bx 125a  
Farr L A clk Safeway Stores Inc PO  
bx 126  
Fassler Balz farmer rt 1 bx 52  
Fattich Milo farmer rt 2 bx 25d  
Fee L I farmer rt 1 bx 135  
Felt Peter E lab genl del  
Fenrich Peter farmer rt 1 bx 40b  
Fiori John farmer rt 1 bx 123  
First & Last Garage (John Westberg)  
rt 1 bx 214  
Fischlin Joe lab rt 2 bx 88  
Fisher Guy farmer rt 1 bx 108  
" W H farmer rt 1 bx 181  
Fitzpatrick P B farmer rt 1 bx 68  
Flagg Dayton C farmer PO bx 211  
" Jessie E prin Burwood Sch PO bx  
211  
Flint Albina (wid G L)  
Foltz Rendon & Wallace (E P Foltz  
C P Rendon Gerald Wallace) law-  
yers Escalon State Bank Bldg  
Forasilpe G lab rt 1 bx 43

## STOCKTON DRY GOODS CO.

Stockton's Largest Department Store

42 STORES UNDER ONE ROOF

Corner Main and American

Telephone 5030

P. O. Box  
188**CAPPS BROS.**Tel.  
2441

MANUFACTURERS OF

**HARVESTER PARTS — SPECIAL EQUIPMENT**

822 East Church St.

Stockton

614

(1937) R. L. POLK &amp; CO'S

**ESCALON—Contd**

Ford Geo W farmer rt 1 bx 22  
 " Paul L farmer rt 2 bx 134  
 " R A farmer rt 2 bx 132  
 Foresti Dante vineyardist PO bx 112  
 Fowler Jas W farmer rt 1 bx 1150  
 " Sherrill W farmer rt 1 bx 157  
 Franceschetti Angelo farmer rt 2 bx 148  
 " John farmer rt 3 bx 94  
 Francis Geo farmer rt 2 bx 175  
 Frasier Zeal farmer rt 1 bx 144  
 Frisen Martin M carp PO bx 5  
 Froscone Sam farmer rt 1 bx 88  
 Furtado Joe farmer rt 1 bx 124  
 Gadbury Clarence M mech rt 1 bx 144  
 " Franklin P farmer rt 2 bx 85  
 Gamboni Jos W farmer rt 2 bx 25d  
 Gammon LeRoy (Escalon Drug Store) PO bx 292  
 Gannon Anna rt 1 bx 172f  
 Gardner E B prin Escalon Union High Sch  
 Gasper Wm farmer rt 1 bx 10  
 George Frank farmer rt 1 bx 71a  
 " Laurence farmer rt 1 bx 27  
 Gerzini John farmer rt 1 bx 19  
 Gibson Nellie M Mrs rt 1 bx 141a  
 " W F farmer rt 1 bx 141a  
 Gilbert W A farmer rt 1 bx 120  
 Gillardoni Frank farmer rt 1 bx 28  
 Gillespie Parks farmer rt 1 bx 134  
 " Thaddeus E farmer rt 1 bx 134  
 " Walter farmer rt 1 bx 182a  
 Giovanni V lab rt 1 bx 125a  
 Gistler Martin farmer rt 1 bx 29a  
 Glad Tidings Mission C E Persing pastor PO bx 163  
 Goldman Max chemist Alba Grape & Fruit Co PO bx 216  
 Gomes Francisco T farmer rt 2 bx 96  
 " Joe farmer rt 1 bx 88  
 Gonzalez B Mrs farmer rt 1 bx 199  
 " Gregorio V truck driver rt 1 bx 213b  
 Gooch Mary P O bx 255  
 Good Wade H farmer rt 2 bx 111a  
 Goodlin D D farmer rt 1 bx 26a  
 Goodner W L farmer rt 1 bx 137a  
 Grabow Herman dairy PO bx 251  
 Grace Mary B Mrs PO bx 145  
 " Mattie PO bx 145  
 Graff Russell farmer rt 2 bx 183  
 Gray H W lab PO bx 172  
 Grimaldi F farmer rt 1 bx 102  
 Grosamigan Max farmer rt 1 bx 53  
 Grubb LaVerna rt 2 bx 179a  
 Gushe Bros (E J and O A) plmbrs PO bx 153  
 " Fred J (Frances) (Gushe Bros) PO bx 153  
 " Otto A (Kath) (Gushe Bros) rt 1 bx 203  
 Gustafson Thompson Post No 263 American Legion Roy B Light commander  
 Gusti A fruit buyer PO bx 152  
 Hagstrom P farmer rt 2 bx 10  
 Haible Christ farmer rt 2 bx 180  
 Hale A A farmer rt 1 bx 6  
 " Harvey F cow tester PO bx 73  
 Hall Chas O farmer rt 2 bx 42  
 " Elmer R farmer rt 2 bx 42  
 " Frank F farmer rt 2 bx 128  
 " Josephine telir Atlanta Grammar Sch PO bx 296  
 " W G lab PO bx 296

Halling Herbt farmer rt 2 bx 21  
 Hammerquist Claus W farmer rt 2 bx 75  
 Hanlon Jack farmer rt 1 bx 172g  
 " Marcus farmer rt 1 bx 172a  
 Hansen Emanuel farmer PO bx 6  
 " Lewis R farmer rt 1 bx 213  
 Hanson A E (Escalon Electric) PO bx 236  
 " Henry carp PO bx 254  
 Harbers Alice H Mrs tchr Escalon Union High Sch rt 2 bx 194  
 Harder Ernest C farmer rt 1 bx 7  
 Harding Virgil lab rt 1 bx 9a  
 Hargrove Paul L farmer rt 1 bx 155a  
 Harper Chas C farmer rt 2 bx 61  
 Harris Enos farmer rt 2 bx 157  
 " Luther farmer rt 2 bx 173b  
 Hart Bud I lab rt 1 bx 106  
 " Margt Mrs rt 1 bx 56a  
 Harter Glen G farmer rt 1 bx 197  
 Bathaway Otto C (Emily) blksmith and mach bx 245  
 Hauck Carl P farmer genl del  
 Hegwer H J farmer rt 1 bx 115  
 Heini Jos dairymn rt 2 bx 89  
 Heinze Frank L farmer rt 2 bx 95  
 Hembree Wm farmer rt 1 bx 143a  
 Hendrickson Wm farmer rt 1 bx 200  
 Henson Dewey (Edith E) farmer rt 1 bx 113  
 Hetzler Roy A (Harriet M) blksmith PO bx 274  
 Heurlin Theodosius county agri inspr PO bx 111  
 Highnote C D lab PO bx 144  
 Hitchcock Elsie rt 1 bx 172dd  
 Hogate Saml W jan Escalon High Sch rt 1 bx 6  
 Hogue Marie Mrs farmer rt 1 bx 141  
 Hoimyr G farmer rt 2 bx 79  
 Hoigate B B farmer rt 2 bx 118a  
 Hollabaugh Thos G (Desalone) r rt 1 bx 94a  
 Holsinger P H farmer rt 2 bx 46a  
 Holt L H lab genl del  
 Home Ice & Fuel Co (Lyman Jones) PO bx 55  
 Honthaas Grant farmer rt 2 bx 166  
 Hooper Abr T farmer rt 2 bx 177  
 Horn H C farmer rt 2 bx 45  
 Houk Noah J Rev pastor Presbyterian Ch PO bx 233  
 Hughes M F farmer rt 2 bx 149b  
 Hulteen Adena sten So S J Irrig Dist rt 1 bx 206  
 Humphreys A B precooling mach and vineydst PO bx 54  
 Huntley Elmer ditch tndr rt 2 bx 66  
 " Jesse H farmer rt 2 bx 86a  
 " John farmer bx 50a  
 " Lyman L farmer rt 2 bx 50a  
 Hurley H J farmer rt 2 bx 160  
 Huse Harry C farmer rt 1 bx 132  
 Ingham C W farmer rt 1 bx 15  
 Ingram Guy F farmer rt 1 bx 12  
 Irwin Saml J (Minerva) pres Escalon State Bank PO bx 242  
 Isala Louis farmer rt 2 bx 141  
 Jackson C B truck driver PO bx 165  
 " Geo W farmer rt 2 bx 21b  
 " Virgil W Rev PO bx 266  
 Jersey Dairy T H Ulrey mgr PO bx 226  
 John C J farmer rt 2 bx 166d  
 Johns John farmer rt 1 bx 121  
 " Joy wchmn genl del

Johnson Arvid W (Lily) lab P O bx 185  
 " Carl J farmer rt 2 bx 68  
 " David farmer PO bx 181  
 " Edith I Mrs PO bx 202  
 " Edw farmer rt 1 bx 91  
 " Frank J farmer bx 215  
 " Gustave A farmer rt 2 bx 67  
 " Hans farmer rt 1 bx 172  
 " Henry C farmer genl del  
 " Hilding C (Mildred) clk Escalon Bakery PO bx 86  
 " J A farmer rt 2 bx 3  
 " Jens P farmer rt 1 bx 172  
 " John W farmer rt 2 bx 116  
 " Leonard farmer rt 2 bx 3  
**JOHNSON LESLIE A, Postmaster**  
 " Luther farmer rt 2 bx 67  
 " Martin B farmer rt 2 bx 35  
 " Olaf farmer rt 2 bx 64  
 " Otto H farmer rt 2 bx 92  
 " Raymond farmer rt 1 bx 171  
 " Theo farmer rt 1 bx 122  
 " W G rt 2 bx 149  
 " Wm S farmer rt 2 bx 188  
 Jones Alice D real est  
 " Geo L farmer rt 1 bx 212aa  
 " John J farmer rt 1 bx 161a  
 " Lyman (Home Ice & Fuel Co) PO bx 55  
 " M B farmer rt 2 bx 35  
 Kampe Carl O farmer rt 2 bx 106  
 Karker Howard mgr Smith Trading Post PO bx 166  
 Kaslin Edw farmer rt 2 bx 12f  
 Keever Ralph lab rt 2 bx 57  
 Keller W A lab rt 2 bx 142  
 Kennedy Jos P farmer rt 1 bx 95  
 King I-ynn D farmer PO bx 122  
 " Saml K (Maggie A) lawyer PO bx 122  
 Knepp Bruce A farmer rt 1 bx 5  
 Knight Francis lab rt 1 bx 172d  
 Knox Chas lab rt 2 bx 167a  
 Kohne Frank M (Escalon Poultry & Egg Co) PO bx 134  
 Kullman Wm farmer rt 2 bx 68  
 Kullman Kaspar farmer PO bx 34  
 Ladd Robt trucking genl del  
 Laflaty Clarence E farmer PO bx 272  
 " Fred J (Florence) farmer PO bx 272  
 " Walter H (Emma) farmer PO bx 272  
 LaHause W farmer rt 2 bx 154b  
 Lance Leonard farmer rt 1 bx 49  
 Landis Geo R farmer PO bx 4  
 Landon Almerican P contr and Constable of Dent Township PO bx 192  
 Lane L H farmer rt 2 bx 159  
 Langum T D farmer genl del  
 Larro Fred S farmer rt 1 bx 37  
 Larsen Christian farmer rt 1 bx 47a  
 " Blmer Rev pastor Lutheran Ch PO bx 142  
 " Lars A farmer rt 2 bx 81  
 " Lauritz P rancher rt 1 bx 57a  
 " M Mrs PO bx 256  
 Laugero Alf farmer rt 2 bx 133a  
 Laurenzo Manuel farmer rt 1 bx 7f  
 Lausen Hans C farmer rt 2 bx 25c  
 Lease Otis W rancher  
 " Roy C (Bernie)  
 " Thos lab  
 Lee Miles V truck driver rt 2 bx 48a  
 Lehman Fred E spotter rt 2 bx 97  
 Leighton J Nets (Florence) clk

# F. J. DIETRICH & CO.

INSURANCE

235 E. WEBER AVE., STOCKTON

APPRAISALS

SAN JOAQUIN COUNTY DIRECTORY (1937)

615

Lewis Alf farmer rt 2 bx 174g  
 " Chas M farmer rt 1 bx 48a  
 " Geo G farmer rt 1 bx 46  
 " H J farmer rt 2 bx 24d  
 Lial Manuel S farmer rt 1 bx 75  
 Light Emily G Mrs agt PT&T Co PO  
 bx 293  
 " Roy B driver PO bx 294  
 Lindgren Flithiof C farmer rt 2 bx 2  
 Lindman P C formn Tidewater Son  
 Ry PO bx 75  
 Lindstrom C O Mrs farmer  
 " Carl A vet  
 " Chas O farmer rt 2 bx 1a  
 Liscum Mary Mrs tchr Van Allen  
 Sch rt 1 bx 85  
 Littlefield Fred A farmer rt 1 bx 99  
 Litz Meat Market (H S Litzenberg)  
 rt 1 bx 204  
 Litzenberg Hugh S (Litz Meat Mar-  
 ket) rt 1 bx 203  
 Lopes A C farmer rt 2 bx 66  
 Lorino Tony farmer rt 1 bx 139  
 Loveless H C farmer rt 1 bx 85  
 Luce Henry K farmer rt 1 bx 158  
 Lucky's Cafe rt 2 bx 26b  
 Luis Manuel E farmer rt 1 bx 182  
 Lundquist Gerald farmer rt 2 bx 13  
 " Inez clk J M Anderson  
 " John O farmer  
 Luparia Pietro farmer rt 2 bx 101a  
 Lyons Russell lab rt 2 bx 160  
 Lytle W F farmer rt 2 bx 137  
 Machado Manuel G farmer rt 2 bx 29  
 Mack Oliver lab rt 1 bx 99a  
 Mackey Chas A cattle dealer rt 2 bx  
 166  
 Macsenti Deno farmer rt 1 bx 190  
 Maggini Alfonso farmer rt 2 bx 13a  
 Magnuson Herman farmer rt 2 bx 108  
 Mancini Nell tchr Escalon Grammar  
 Sch PO bx 182  
 Mansfield John J farmer bx 98  
 Margolf A lab rt 1 bx 190  
 Marino Giuseppe farmer rt 2 bx 149  
 Marshall Anthony L farmer rt 2 bx  
 166d  
 " Ernest H farmer rt 1 bx 89  
 Marston Wm H atdt C H Oliver  
 Serv Sta  
 Martely Marcus (Escalon Barber  
 Shop) PO bx 67  
 Martin John jr lab PO bx 184  
 " John G farmer rt 2 bx 117a  
 " John H (Grace) real est PO bx 93  
 " Paul E farmer rt 2 bx 179  
 " R L farmer rt 1 bx 158  
 " R S farmer rt 2 bx 36  
 Mason J T farmer rt 1 bx 149  
 " John T farmer rt 1 bx 67a  
 Masters Forest rt 1 bx 193  
 Mattesch John slsmn B L Reming-  
 ton Ford Sales & Service  
 McAffrey T farmer rt 2 bx 167c  
 McBride Henry F farmer rt 2 bx 57  
 " Leo W farmer rt 2 bx 48b  
 McCoy Irving V farmer rt 2 bx 133

McDonald Geo W farmer rt 1 bx  
 152a  
 McEwen Wm farmer rt 2 bx 154  
 McFall Lucky rt 2 bx 26b  
 McGee Roland farmer rt 1 bx 17a  
 McKay A A farmer rt 2 bx 144  
 McKinney Herschel H farmer rt 1  
 bx 194  
 McNeil Alex farmer rt 1 bx 152  
 McPherson Tracy .H (E Ruth) clk  
 Wallace Hdw & Material Co  
 Medeiros J P farmer rt 2 bx 27a  
 Mellose Joe farmer rt 2 bx 93  
 Mensinger Merle farmer rt 2 bx 167a  
 Merrill Robt lab rt 2 bx 106  
 Methodist Church PO bx 196  
 Metzger Frank M farmer rt 1 bx 49  
 Meyers S G Mrs rt 2 bx 26  
 Miedema Marion M tchr Escalon Un-  
 ion High Sch  
 Milbur Victor farmer rt 2 bx 64a  
 Millich Robt lab PO bx 231  
 Miller Chas W judge Superior Court  
 PO bx 35  
 Mills J M farmer rt 2 bx 115  
 Mineni M farmer rt 1 bx 40b  
 Minini John farmer rt 2 bx 25  
 Mitchell Benton E (Effie) clk Black-  
 more Merc Co PO bx 85  
 " Effie Mrs librn Escalon Library  
 PO bx 85  
 Modern Woodmen of America Camp  
 No 7973 American Legion Hall  
 Mochrig Fred farmer rt 2 bx 144  
 Monk Lars farmer rt 2 bx 104  
 Monteen Jay farmer rt 1 bx 36  
 " Rufus L farmer rt 1 bx 39  
 " Vern F farmer rt 1 bx 39  
 Moore D lab rt 1 bx 59a  
 " L H Mrs rt 2 bx 170  
 Moorehead Chas C (Irma U) (Moore-  
 head Lbr Co) PO bx 283  
 " Lumber Co (C C Moorehead) PO  
 bx 283  
 Moorman L B farmer rt 2 bx 70  
 Moranville Chas F farmer rt 2 bx  
 161a  
 Moreland Gus farmer rt 1 bx 57  
 " J H farmer rt 1 bx 57  
 Morgenson H Louis (Lura C) PO bx  
 116  
 Morris Frank farmer rt 2 bx 125  
 " M S farmer rt 1 bx 156b  
 " Preston farmer rt 1 bx 48  
 Morrison John C farmer rt 1 bx 212aa  
 Morse Priscilla nurse rt 2 bx 134  
 Mouradian Frank farmer rt 1 bx 32  
 Mozzai Bert farmer rt 2 bx 147  
 Murphy Thos W farmer rt 2 bx 26a  
 Myers Fred Mrs rt 1 bx 89  
 Negley Noel farmer  
 Nelson Harry (Luella) (Nelson &  
 Wallace Contracting Co) PO bx  
 244  
 " John PO bx 63  
 " Peter N lab PO bx 185

Nelson & Wallace Contracting Co  
 (Harry Nelson Geo A Wallace)  
 PO bx 244  
 Ninas Albt O lab PO bx 52  
 " Bros farmers PO bx 52  
 Noakes Ben farmer rt 2 bx 26b  
 Noden Chas farmer rt 2 bx 170a  
 Northcutt W A farmer rt 2 bx 40  
 Nottingham R Whit (Dora) jan  
 Escalon Sch  
 Nunamaker John W farmer rt 1 bx  
 118a  
 " Roy R farmer rt 1 bx 118a  
 OBrien Terrance J farmer rt 1  
 Ohrt Chas farmer PO bx 175  
 Oitz Bernardo farmer rt 1 bx 70  
 Olarrea Maria Mrs rt 1 bx 70  
 Oliver C H gas sta PO bx 114  
 Olmo John farmer rt 1 bx 38  
 Olsen Emma A (wid Thos) PO bx 84  
 Olson Carl G farmer PO bx 104  
 " Louis Mrs farmer rt 2 bx 72  
 Ostrom Bert lab PO bx 64  
 " Ida (wid C M) rt 2 bx 101  
 Owens Harry V lab  
 Pacific Telephone & Telegraph Co  
 Mrs E G Light agt PO bx 293  
 Padgett John farmer rt 1 bx 141b  
 Palmer Axel farmer rt 2 bx 2b  
 " C E bakery route mn rt 2 bx 24c  
 " Herman farmer rt 2 bx 2b  
 Parker Alene PO bx 133  
 " Geo K eng PO bx 133  
 Parrish Harry lab rt 1 bx 107a  
 Paulus Wm H farmer rt 1 bx 210  
 Payne Ruth farmer rt 2 bx 172a  
 Peerless Milling Co C H Barth mgr  
 PO bx 212  
 Pellow J W farmer rt 1 bx 46  
 Pereira Carlos farmer rt 2 bx 98  
 " Joe N farmer rt 1 bx 133a  
 Peri Frank rt 2 bx 49  
 Perk's Cafe (P J Perkins) PO bx 156  
 Perkins P J (Perk's Cafe)  
 " John T eng rt 2 bx 139  
 Perri Robt farmer rt 2 bx 131  
 Perry A F farmer rt 1 bx 10  
 Persano Tony farmer rt 1 bx 15a  
 Persing C E Rev pastor Glad Tidings  
 Mission PO bx 163  
 Peterson Albt O (Anna) gro PO bx 43  
 " Alf farmer rt 2 bx 15  
 " Carl H (Adeline) (Peterson's Ser-  
 vice Station) PO bx 262  
 " Frank E farmer rt 2 bx 82  
 " Geo P barber rt 2 bx 18  
 " Gladys A sten rt 1 bx 24  
 " Linus V farmer rt 1 bx 24  
 " Otto (Carlson & Peterson) PO bx  
 286  
 " Reinhold O atdt Escalon Serv Sta  
 PO bx 146  
 Peterson's Service Station (C H Peter-  
 son) PO bx 262  
 Peirone Michl farmer rt 1 bx 98  
 Pfister Jos A meat clr rt 1 bx 29  
 Phelps Harold farmer rt 2 bx 131

## INGALLS RADIO SERVICE & LABORATORY

(A Member of Radio Manufacturers Service)

Authorized Philco, R. C. A., General Electric and Zenith Service

COMPLETE RADIO SERVICE

1249 South San Joaquin St., Stockton

Telephone 10031

# CHARLES TRAVEL SERVICE

STEAMSHIP - RAILROAD - AIRPLANE - ZEPPELIN - MOTOR BUS  
HOTEL - RESORT RESERVATIONS TOURS - CRUISES

17 South San Joaquin St., Stockton

Phone 5121

616

(1937) R. L. POLK & CO'S

## ESCALON—Contd

Pierce M E farmer  
Pimental M V farmer rt 2 bx 27a  
Pinhero Antonio farmer rt 1 bx 99a  
Pitta, Manuel rt 1 bx 100a  
Pitts Leon L farmer PO bx 263  
" Viola S Mrs tchr Escalon Grammar Sch PO bx 263  
Poore John W farmer rt 1 bx 50  
Pope Wm farmer rt 1 bx 198a  
Popp Claus farmer rt 2 bx 193  
" Edmund farmer rt 2 bx 193  
" Raymond F farmer rt 2 bx 193  
Porath Herman farmer rt 1 bx 6a  
Porter Sand & Gravel Co (J S Cowan) rt 2 bx 29  
**POST OFFICE, L A Johnson Postmaster**  
Postma John farmer rt 2 bx 168a  
Potter J W farmer PO bx 106  
Potterton F L farmer rt 2 bx 114b  
Powell Glendale farmer rt 1 bx 17  
" Melvin lab PO bx 247  
" Saml C farmer  
Powers Chas W (Lila J) driver Peerless Milling Co PO bx 176  
" Noah H slsmn  
Poynor J L farmer rt 1 bx 166  
" Maude W farmer rt 1 bx 159  
Prater Albt O farmer rt 1 bx 188  
" Jos M farmer rt 1 bx 169  
" Moses J farmer rt 1 bx 169  
" Walter M farmer rt 1 bx 169  
" Wm L farmer rt 1 bx 110  
Presbyterian Church Rev N J Houk pastor  
Pretti Eugenio farmer PO bx 167  
Price Danl R farmer rt 1 bx 174  
" Ed A farmer rt 2 bx 149b  
Procter R E farmer rt 2 bx 179a  
Puccetti A farmer  
Quaresema M farmer rt 1 bx 166a  
Quillen H W farmer rt 1 bx 110a  
Quintini S farmer rt 1 bx 136  
Railway Express Agency C A Shyrock agt  
Ramazzini Pete farmer rt 2 bx 130  
Ramirez Panteleon lab Santa Fe Ry PO bx 186  
Ramos Rafaela lab rt 1 bx 96  
Rampoldi O (Escalon Warehouse) PO bx 183  
Randozza Nick lab PO bx 247  
Ream Saml E farmer rt 1 bx 183a  
" Wm E farmer rt 1 bx 183  
Reardon Cath farmer rt 2 bx 166c  
Reasoner H E farmer rt 2 bx 143  
Reece Cicero E farmer rt 1 bx 27  
Reed P W farmer rt 2 bx 139  
Reichmuth Paul farmer rt 2 bx 149a  
Reid Chas H farmer rt 2 bx 149  
" Freeman W farmer rt 1 bx 197  
" M R farmer rt 1 bx 189  
" Mary L farmer rt 2 bx 174  
" Wm R farmer rt 2 bx 24a  
Reiff F farmer rt 2 bx 68

Reisenbeck John (Maude B) garage PO bx 211  
Remington B L (B L Remington Ford Sales & Serv)  
" B L Ford Sales & Service (B L Remington) PO bx 261  
Richards Robt S farmer rt 1 bx 35b  
Ried O G farmer  
Riede Jacob baker Escalon Home Bakery PO bx 124  
Rinaldi Oscar lab PO bx 187  
Roberson Arch T farmer rt 2 bx 59  
" Theo B farmer rt 2 bx 39  
" Thos B farmer rt 2 bx 61a  
Roche R E farmer PO bx 45  
Rodoani Antonio farmer rt 1 bx 130a  
Rodoni G farmer rt 2 bx 138  
Roesler Theo J farmer rt 2 bx 129  
Rogers H E farmer rt 2 bx 174  
Rollins Harvey D rt 2 bx 108  
Rommel John farmer rt 1 bx 212b  
Rosa Mary farmer rt 2 bx 14a  
Rose John farmer rt 1 bx 62  
Rote Gus farmer rt 2 bx 148a  
Rozario T R farmer rt 1 bx 153  
Ruffino Gabriel lab rt 1 bx 38  
Rugh F J farmer rt 2 bx 182a  
Ruiz Max farmer rt 1 bx 74  
Runsten Bros (C J and E A) shoe reprs PO bx 234  
" Carl J (Runsten Bros) PO bx 234  
" Eric A (Runsten Bros) PO bx 234  
" Verner L farmer PO bx 234  
Russell D B farmer rt 1 bx 20  
Rydquist Harriet V tchr rt 1 bx 23  
" John W farmer rt 1 bx 23  
" Roland rt 1 bx 23  
Safeway Stores Harold Nelson mgr gro PO bx 253  
Salmon Myra M Mrs PO bx 248  
" Wm C farmer rt 2 PO bx 248  
Sammons I W farmer PO bx 136  
Sampson Chas watch repr PO bx 124  
Sandall E T farmer rt 2 bx 110  
Sandberg Anna rt 2 bx 64  
San Filippo S C (Escalon Winery)  
San Joaquin County Farm Bureau  
Leon Pitts sec meets Grammar School  
" Local Health District Priscilla Morse nurse rt 2 bx 194  
Santa Fe Sand & Gravel Co (W A Arlington) PO bx 271  
Santini G farmer rt 1 bx 35½  
Sapp R E farmer rt 2 bx 179a  
Schaefer Jacob P farmer rt 2 bx 162a  
Scheel Ralph farmer rt 2 bx 168  
Scheffel Hugo W farmer  
Schmalek Jacob farmer rt 1 bx 122  
School Board Union High Sch R D Von Glahn clk PO bx 243  
Schultz Otto rt 2 bx 195  
Schutz John J farmer rt 2 bx 75  
Schuylenburg Abram farmer rt 1 bx 56  
" Cornelius farmer rt 1 bx 56

Schwaller K farmer rt 2 bx 46b  
Scott Helen farmer rt 1 bx 71a  
" Irving D lab rt 1 bx 182  
" Minnie farmer  
Scow J farmer rt 1 bx 172d  
Seaman Jess A (Grace) autos PO bx 282  
Sequist Eric G farmer rt 2  
Secini Steven farmer rt 2 bx 90  
Second John farmer rt 1 bx 19a  
Seriava Joe farmer rt 2 bx 44a  
Serpa John farmer rt 2 bx 56  
Setaro Jack A lab rt 1 bx 95  
Sexton Edw J farmer rt 1 bx 128  
Shafer J P farmer rt 2 bx 154  
" W A Mrs rt 1 bx 203  
Sharkey Michl J farmer rt 1 bx 191  
Sharp Jas R farmer rt 1 bx 55  
Shaw Glen truck driver genl del  
" Jos S lab  
" Sarah P Mrs genl del  
Shiffert H D lab rt 2 bx 1  
Shiga J farmer rt 1 bx 35c  
Shimada F rt 2 bx 58  
Shultz E A farmer PO bx 46  
Shuster Anton farmer rt 2 bx 145  
Sigelkoff Franklin E (Ethel C) lab bx 227  
Silva Frank farmer rt 1 bx 66a  
" John P farmer rt 1 bx 25aaa  
" Manuel farmer rt 1 bx 63  
" Manuel R farmer rt 1 bx 72  
Silveira Amos farmer rt 1 bx 172g  
" F farmer rt 1 bx 72  
Silverstrini Joe farmer PO bx 26  
Simas C L farmer rt 1 bx 41c  
Sironi Louis farmer rt 2 bx 130  
" Noe (Central Meat Mkt) PO bx 125  
Skiles Arth farmer rt 2 bx 25e  
Skinner John A farmer rt 1 bx 182a  
Smith Al M pntr rt 2 bx 165b  
" Emmitt (Smith Trading Post Fruit & Nursery Co) PO bx 166  
" Marie A Mrs rt 2 bx 86  
" Percy M farmer rt 1 bx 200a  
" Trading Post Fruit & Nursery Co (Emmitt Smith) Howard Karker mgr PO bx 166  
Snell B H farmer rt 2 bx 158  
Solari Geo J blksmith rt 2 bx 146  
Solberg Milton E (Madeline) rt 2 bx 71  
Sorrenti S S farmer rt 2 bx 162  
South San Joaquin Irrigation District  
F S Thornton assessor PO bx 252  
Spandrio A farmer rt 1 bx 172dd  
Spoh Earl F farmer rt 2 bx 181  
Spencer Dan farmer rt 2 bx 154a  
Stalder Chas farmer rt 2 bx 175c  
Standard Oil Co sub sta J S Wright agt bx 222  
Stearns Louis L farmer rt 1 bx 126  
Steele Shirley L farmer rt 2 bx 76  
Stefani A farmer rt 1 bx 120  
Steinegul Claude E County Supvr 5th Dist PO bx 217



## TYPISTS!

See and Try the New ROYAL TYPEWRITER in Your Own Office

Also See and Compare All Makes of Portable Typewriters at

# STANDARD OFFICE EQUIPMENT CO.

340 E. Weber Ave., Stockton

Phone 567

## OFFICE MANAGERS!



# ELECTROLUX INC.

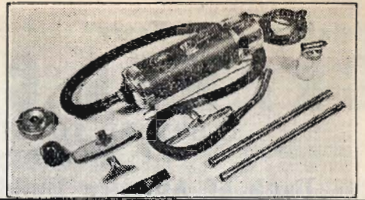
## CLEANER AND AIR PURIFIER

106 DIFFERENT USES IN HOME

Telephone 2219

110 N. San Joaquin St.

501 Belding Building



SAN JOAQUIN COUNTY DIRECTORY (1937)

617

Stewart A E farmer rt 1 bx 195  
 " Lester farmer rt 1 bx 173  
 Stickle Perry B (Cora A) editor  
 Escalon Times PO bx 257  
 Stiles Ray farmer  
 Stoble Fred farmer rt 2 bx 144  
 Stockel Lydia Mrs (Escalon Hotel)  
 PO bx 162  
 Stockholm Helena tchr Escalon Un-  
 ion High Sch PO bx 182  
 Stockton G M farmer rt 2 bx 137  
 Stoehr Frank H draymn PO bx 284  
 Stone Chas farmer rt 2 bx 163  
 Straight B H farmer rt 2 bx 108a  
 Strand C Esmer farmer rt 2 bx 109  
 " Eldrid lab PO bx 241  
 " Esther cash Escalon State Bank  
 PO bx 241  
 " John farmer PO bx 65  
 " Linus farmer rt 2 bx 7  
 Strech Joe farmer rt 2 bx 112a  
 Striplin Walter J farmer  
 Stroble Wm F (Hazel) autos PO bx  
 227  
 Strong Fred farmer rt 2 bx 40  
 Strum Ludwig J (Christina) gdur  
 Suhiburu P farmer PO bx 74  
 Sunblad Carl farmer PO bx 121  
 Svendsen Paul baker Escalon Home  
 Bakery PO bx 137  
 Swanson Adolph C farmer rt 2 bx  
 110a  
 " Rudolph farmer rt 2 bx 3b  
 Swass Jos L farmer rt 1 bx 147  
 Swedish Lutheran Church PO bx 234  
 " Mission Church PO bx 193  
 Tashian A farmer rt 2 bx 143  
 Tatoian John G farmer rt 1 bx 212a  
 Taylor Ben farmer rt 2 bx 167a  
 " Harry lab  
 Texaco Service Station rt 2 bx 1  
 Thomas David farmer rt 2 bx 71  
 " Enoch J farmer rt 2 bx 173  
 " Hugh lab PO bx 254  
 Thompson Burtis S farmer rt 2 bx  
 120  
 " C W farmer rt 3 bx 120  
 Thorne Robt farmer rt 1 bx 59  
 Thornton Dora (wid F L)  
 " Elmer P farmer rt 2 bx 165  
 " Frank S (Edna E) assessor So S J  
 Irrig Dist PO bx 252  
 Thrasher C R farmer genl del  
 " Neal farmer genl del  
 Tibbetts Arth G. (Hazel) agt Tide-  
 water Sou Ry Co PO bx 295  
 Tidewater Southern Railway Co A G  
 Tibbetts agt PO bx 295  
 Tilbury J A carp  
 Trager Geo A farmer rt 1 bx 198  
 Trieguero Frank farmer rt 1 bx 99a  
 Trink C F farmer rt 2 bx 150  
 Tully Amanda rt 2 bx 139  
 Tune G farmer rt 1 bx 42

**TURNER HARDWARE & IMPLE-  
 MENT CO. F A Tuvey Mgr. PO  
 Box 273, Tel 27 (For further in-  
 formation see back cover and  
 page 8 Buyers' Guide)**  
 " I L lab PO bx 157  
 Tuttle Geo lab PO bx 22  
 " S R farmer rt 1 bx 172g  
 Tuvey Fred A (Pearl) mgr Turner  
 Hdw & Implt Co PO bx 273  
 " Mary (wid Chas) rt 2 bx 23  
 " Russell agt Hancock Oil Co rt 2  
 bx 23  
 Twedt Thos (Gertie) lab  
 Udovich Anton farmer rt 1 bx 19  
 Uhlin Emma rt 2 bx 104  
 " Frank E (Emma) farmer rt 2 bx  
 80  
 Ulirey T H jr mgr Jersey Dairy PO  
 bx 226  
 Uthe Anna farmer rt 1 bx 2  
 " Henry W (Ruth) millwkr Moore-  
 head Lbr Co rt 1 bx 22  
 Valenciano Jose lab PO bx 123  
 Valley Inn (Chas Cadlolo) P O bx 191  
 Van Andel Machiel farmer rt 1 bx 82  
 Van Assen Herman farmer rt 1 bx  
 153a  
 Vandervoort S farmer rt 2 bx 166b  
 Vanes Thos farmer rt 1 bx 145  
 Van Till Clarence farmer rt 1 bx 15  
 Vargas Tony farmer rt 2 bx 130  
 Vesia V W farmer rt 2 bx 88a  
 Vick Paul rt 1 bx 212aa  
 Vierra Harry D farmer rt 1 bx 60  
 " Manuel D farmer rt 1 bx 74  
 Vilen J Walfred lab  
 " John  
 Vincent Anna K bx 196  
 " Jas H driver Escalon Home Bakery  
 PO bx 196  
 Vital's Radio Shop radios and fur-  
 niture PO bx 187  
 VonGlahn Berchart H farmer rt 1  
 bx 83  
 " Fredk W farmer rt 1 bx 76  
 " Geo F farmer rt 1  
 " Robt D farmer rt 1 bx 83  
 Von Hungen A P phys PO bx 223  
 Waldron John J rt 2 bx 45  
 Walgren farmer rt 2 bx 2a  
 Walker L L lab rt 1 bx 9a  
 Wallace Geo A (Nelson & Wallace  
 Contracting) (Wallace Hardware  
 & Material Co) sec Escalon Water  
 & Light Co PO bx 135  
 " Geo L (Wallace Hardware & Ma-  
 terial Co) PO bx 135  
 " Hardware & Material Co (G A and  
 G L Wallace) PO bx 244  
 Ward Ruth E tchr Escalon Grammar  
 Sch PO bx 153  
 Washburn LeRoy farmer rt 2 bx171a  
 Weaver Fred C farmer rt 1 bx 172  
 Webb Chas J junk dlr and garbage  
 Westberg John (Alma) (First and  
 Last Garage) rt 1 bx 214

Western Union Telegraph Co C A  
 Shyroch mgr  
 White Doris S orchardist rt 2 bx 73  
 Whitlock H J tchr Escalon Union  
 High Sch PO bx 92  
 Widman Otto farmer rt 1 bx 16  
 Wiess Harry watchmn Escalon  
 Winery PO bx 115  
 Williams Carl N mech B L Reming-  
 ton Ford Sales & Service PO bx  
 24  
 " Earl H farmer PO bx 102  
 " G H farmer rt 2 bx 160  
 " Geo farmer rt 2 bx 160  
 " H L farmer rt 1 bx 167a  
 Wilson Alvin farmer rt 2 bx 137  
 " Norman farmer rt 1 bx 35  
 " R S farmer rt 2 bx 187b  
 Wood Roy farmer rt 2 bx 30  
 Woodbridge C K farmer rt 2 bx  
 174d  
 Worthington Hugh S farmer rt 2  
 bx 136  
 Wycokoff S farmer rt 1 bx 15  
 Wylde Lewis D farmer  
 Yabuki G K farmer rt 2 bx 27  
 Yolo A farmer rt 2 bx 27  
 Yost Dan A farmer rt 1 bx 15  
 Young Bud lab rt 1 bx 106  
 " Glen lab genl del  
 " Marion farmer rt 2 bx 86b  
 Zanutto Emil farmer rt 1 bx 36  
 Zeni A farmer rt 1 bx 138  
 Zumalt lab rt 1 bx 103  
 Zurgligen Thos Mrs rt 1 bx 52

### FARMINGTON

Alders Berde M Mrs orchardist  
 Boyke John lab  
 Bresso J  
 Briggs Harry L farmer  
 Brown Wm S farmer  
 Buckman Ada farmer  
 " M J Mrs  
 " O T radio mech  
 Campbell A Grant farmer  
 Carlile C K farmer  
 Carroll Danl lab  
 Conway Chester E farmer  
 Cooper Irene Mrs prin Pub Sch  
 Cozby Wm E chauf  
 Draiss Geo farmer  
 " Lucy E farmer  
 " Matt J stockmn  
 " Thos J farmer and pres Farm-  
 ington Tel Assn  
 " Walter farmer  
 Dunaway J H farmer  
 Farm Bureau Glenn Hattesich farm-  
 er  
 Farmington Telephone Assn T J Draiss  
 jr pres  
 Faulong Frank M farmer  
 Finn Thos J lab  
 Garcia Manuel lab  
 Goetz Fritz orchardist  
 " Gus lab

# STOCKTON COLLEGE OF COMMERCE

Secretarial

Accounting

Civil Service

FREE EMPLOYMENT SERVICE

When You Need Office Help, Either Permanent or Temporary, Ask Mr. Forkner

115 N. SUTTER ST.

TELEPHONE 325

**CRAMER COLLECTION SERVICE**BONDED TO AND LICENSED BY THE STATE OF CALIFORNIA  
DEBTORS LOCATED AND CONTACTED ANYWHERE

318 Bank of America Building

Stockton, California

618

(1937) R. L. POLK &amp; CO'S

**FARMINGTON—Contd**

Goodwin Clay D rancher  
Groves Albt L farmer  
**GROVES BERTHA MRS.** Postmaster  
and Agent PT&T Co  
" Jas M farmer  
" Jos P farmer  
" Virgil stockmn  
Gunter Chas M  
" R L garage  
Hager Hugo P well driller  
Hansen Howard L agt Union Oil Co  
Hawley M L farmer  
Heath Fredk T farmer  
Herbert Stanley D farmer  
Heward John A carp  
Holman Chas farmer  
Johnson Alex lab  
Jones H Cherry farmer  
King Harry lab  
Krebs Aug orchardist  
" F J Mrs custodian Public Library  
" Frank Y confy  
Lewis Saml J  
Lund Andw vineyardist  
Mahrlen Herman A orchardist  
Malespina R stockman  
Manzo Louis farmer  
Mattesich Geo F farmer  
" Glenn farmer  
" John E farmer  
McIntire Arth E farmer  
Methodist Church  
Monk Jacob L lab  
Morrill Wilbur G farmer  
Mueller Rudolph agt Shell Oil Co  
Mullin Frank farmer  
Nogard Elmer farmer  
Orr Ellis R farmer  
Pacific Tel & Tel Co Mrs Bertha  
Groves agt  
Parello Chas farmer  
Patterson Clifford L farmer  
" J C poultry raiser  
" Robt jr farmer  
Peffer Farms  
Pehl Clair sheep shearer  
" T R lab  
**POST OFFICE, Mrs Bertha Groves,**  
Postmaster  
Public Library Mrs F J Krebs cus-  
todian  
Reynolds D W orchardist  
Santiano John orchardist  
Seward Chas A farmer  
Shell Oil Co Rudolph Mueller agt  
Stuart Chas farmer  
" John D farmer  
Sutliff Byron P poultry raiser  
Toda Bros (J D and L A) genl mdse  
" Jeff D (Toda Bros)  
" Louis A (Toda Bros)  
Tyler Frank D farmer  
Union Oil Co H L Hansen agt  
Vaik Wm farmer  
Waterman E G lab  
Williams Earl H ranch formn

Yater Roscoe farmer

**FRENCH CAMP**

Adams A D farmer  
" Lawrence farmer  
" Wilbur H farmer  
" Wm H farmer  
Alegretti Giobatta farmer  
Allen John blksmith  
Anderson June Mrs nurse Co Hosp  
Angerina Geo driver  
" John farmer  
" Thos truck driver  
August Louis dairymn  
Austin Louis  
Baldwin Frank farmer  
Ballein W L cook Co Hosp  
Barbee L A farmer  
Beal Geo farmer  
Beattie Jas L genl mdse  
" Lawson C gas sta  
Beck Frank H driver  
Becky Bros gas sta and trucking  
Beedy Rolland truck driver  
" Wm J carp  
Begg John H orderly Co Hosp  
Behrns Wm J farmer  
Belinfonte J  
Benedix B R barber  
Benson Robt poultrymn  
Benton Henry lab  
Berner Lisa nurse Co Hosp  
Boege Milton G farmer PO bx 208  
Booth Sanford M  
Bordenave Louis sheepmn  
" Peter live stock transportation  
Bosworth Willard  
Bradford Lorence E Mrs nurse  
Brock Stanislaus  
Buchanan E C PO bx 281  
Buck Nora D maid Co Hosp  
" Robt orderly Co Hosp  
Campbell R W cook Co Hosp  
Cannon Lorene S Mrs nurse  
" N Mrs  
Carlson Aug lab Co Hosp  
" John farmer  
Chinn Geo E carp  
Chubb Chas P  
Close Floyd dairymn Co Hosp  
Connors John R waiter Co Hosp  
Cottle Clara L  
Couchman Paul dairymn  
County Hospital Wm Friedberger  
supt  
Coyne H M  
Dalben Rinaldo PO bx 240  
Dalby R sexton  
Davis Wm R tmstr  
Delmas Lila  
Dixon Thos farmer  
Dorman W C Mrs  
Eiller Wm cook  
Elliott Ray lab  
" Ruth tchr Pub Sch r Stockton  
Elsholz H lab  
Enslar E

Evenson Bergloot nurse  
Farson Saml  
Field Ben F gas sta  
Fisher Ilif farmer  
Fisk Jas  
Fleming T G PO bx 178  
Flora Noah  
Fogg Chas R  
Fowler G  
Fox Eliz nurse Co Hosp  
Frawley Saml grader  
Friedberger Wm supt Co Hosp  
Gallagher Jas lab  
Galloway A H nurse Co Hosp  
Garcier Don J gdnr  
Garrison P I poultrymn  
Gatzman Florence nurse  
Gay Eug J phys  
Gilbeau Albt E radio opr  
" E W hatchery  
Gilbert T H PO bx 172  
Gomes Thos G butcher  
**GORRELL VIOLA F.** Postmaster  
Graham Mary L Mrs nurse  
Grant Hobart farmer PO bx 199  
Graves Wm  
Green Dora Mrs  
Gronдона A gdnr  
" Louis gdnr  
Hagan Francis P  
Hagenguber Jos farm formn Co Hosp  
French Camp  
Halen Alex jan Pub Sch r Stockton  
Hall Edw A miner  
" Elmer mech  
" L J  
" W H  
Hammel Genevieve M Mrs tchr Pub  
Sch r Stockton  
Hampton J pntr  
Harris D H  
" D M farmer  
" L G emp Co Hosp  
Harwick Carolyn clk  
Hayakawa Y bx 209  
Hayashi T PO bx 264  
Higgins Chas J farmer  
Hogan Josephine M clk  
Holmes Amelia L nurse  
Holtz Fred electn  
Howard Geo R nurse Co Hosp  
Hudson Irene nurse  
Hunter Roscoe E barber  
Haya Harry T farmer  
Jack Lulu M tchr Pub Sch r Man-  
teca  
Jackson H  
Jacobsen S nurse  
Johnson Peter (Lambert & Johnson)  
Kay Aura Mrs prin Pub Sch r  
Stockton  
Kerr Lucretia nurse  
Kester Wm orderly Co Hosp  
King Mildred  
Kipp Mrs gas sta  
Klein Jos  
Knell Louis W orderly Co Hosp

**DEAN WITTER & Co.**

STOCKS - COMMODITIES - BONDS

Members

New York Stock Exchange Chicago Board of Trade New York Cotton Exchange  
New York Curb Exchange (Associate) San Francisco Stock Exchange

18 South Sutter Street, Stockton

Stockton 2136

Kniss Howard orderly Co Hosp  
 Kodet Jos lab  
 Kountz Richd truck driver  
 Kroll Frances nurse  
 Lambert Albt (Lambert & Johnson)  
 " & Johnson (Albt Lambert Peter Johnson) sht mtl wks  
 La Prade Bernadine nurse Co Hosp  
 " P S Mrs with S J Genl Hosp  
 Larson Elias lab  
 Lawrence J W contr  
 Leffler Absolom farmer  
 Leize Alice tchr Pub Sch r Stockton  
 Lenhart W G  
 Leonard John farmer  
 Lincoln W A tmstr  
 Loveless Marie tchr Pub Sch  
 Madill P H emp Co Hosp  
 Manteca Lula M  
 Markwell Louis  
 McAllen Bernard H orderly Co Hosp  
 McAlpin F  
 McKinsey Leslie H farmer  
 McKisson H  
 McParland T J  
 Millay Helen  
 Moore Clara  
 Morris F P orderly Co Hosp  
 " Jos poultrymn  
 Muratore Jos farmer  
 " Jos jr live stock transportation  
 Nelson Carl J carp  
 Newell J H Mrs  
 Niholson Harry X Mrs  
 Nixon Helen R Mrs nurse  
 Okerman H  
 Ott Chris W blksmith  
 Parks Marguerite nurse Co Hosp  
 Parr W B waiter  
 Patmon Dorothy Mrs  
 Patterson Jack  
 Peppard C W  
 Pettis Harold dairyman  
 Pierce Edw N  
**POST OFFICE, Viola F Gorrell Post-**  
**master**  
 Powell Roy R waiter  
 Pratt Mark W lab  
 " Pearl B Mrs tchr  
 Prentice John  
 Priest Jesse A farmer  
 Prouty Laurence delmn  
 " Lee farmer  
 Quinn Timothy  
 Randall R G orderly Co Hosp  
 " Wm L  
 Regetz J H poultrymn  
 Reynolds Eldridge  
 " Wm J miner  
 Rich Brant barber  
 Richards Myrtle V  
 Richman Jeannette M Mrs nurse  
 Rimby Wallace W wtchmn  
 Romero M J  
 Roth John gdnr  
 Salsbury L F  
 Schafer Albt Indymn

Schwandt Arth farmer  
 Schwedhelm M farmer  
 " Martin coremkr  
 Seegers Harlan J  
 Shafer Albt Indymn  
 Shaw Marietta tchr  
 Shook A  
 Skuras Tom farmer PO bx 201  
 Smith Fred J PO bx 258  
 " G W carp  
 " Jas J sign writer  
 " John O steward Co Hosp  
 " Mary hskpr  
 Snow Wm B farmer  
 Snyder S S  
 Sorensen Andw I vet surg Western  
 Laboratories  
 Spruitenburg Myndert farmer  
 Stone Thos lab  
 Strobel Alma techn Co Hosp  
 Stuart Jos F (Stuart's Nursery)  
 " Ray S (Stuart's Nursery) PO bx  
 241  
 " Wesley M farmer  
 Stuart's Nursery (J F and R S  
 Stuart)  
 Sunday C V cook  
 Swan Glen mech  
 " Wm clk  
 Szabo Grace A Mrs nurse  
 Terrill Frank  
 Taveira M dairymn  
 Thorpe Ida smstrs  
 Thran Herman farmer  
 Tiffney Patk miner  
 Turner P T dentist  
 Tuttle Ellory  
 Virtue Rena D nurse  
 Waddell M G  
 Waggy Ida Mrs  
 Wagner Edw bus mgr Co Hosp  
 Walter Otto tanner  
 Wand H M  
 Watanuki T PO bx 164  
 Watters Wm H  
 Weatherhead Geo  
 Webb Oliver P wtchmn  
 Wellman Wm E lbrmn  
 Wheeler Frank farmer  
 White B Ava nurse  
 Williams Georgia L  
 " Harry  
 " John R orderly Co Hosp  
 Wilson Thos  
 Woods W H lab  
 Wright Wm truck driver r Stockton  
 Yamasaki J trucking

**HOLT**

Alladio J farmer  
 Arrighi & Martini farmers  
 Baldocechi P farmer  
 Banuelos A lab  
 Biagioni L farmer  
 Boulton J W farmer Stockton ad-  
 dress rt 5  
 Cardova L lab

Ceili & Volpi farmers  
 Cerf Bros (E W and C S) farmers  
 " C S (Cerf Bros)  
 " E W (Cerf Bros)  
 Chiado John farmer  
 Cismondi Jos farmer  
 Coffin Oliver R sec formn  
 Daily J H agt Santa Fe Ry  
 Dean Al lab  
 DeCarli Chas farmer Stockton ad-  
 dress rt 5  
 " Giovanni dairymn Stockton ad-  
 dress rt 5  
 " John J dairymn Stockton ad-  
 dress rt 5  
 Dellamaggiore L farmer  
 Dilbeck E farmer  
 Ellington Jos J farmer  
 Fanucchi L farmer  
 Gann Geo boat liveries  
 Gonzalez Max farmer  
 Gosser J R mach  
 Hanna R L boat liveries  
 Hickey C E lab  
 Jeung S Y farmer  
**JONES WARD L, Postmaster**  
 Laird Mr  
 Lorenzen Andw farmer  
 Marchini M farmer  
 Mariani G farmer  
 Moranda Chas farmer  
 Morgan Frances gas sta  
 Morton M S farmer  
 Moscardini A farmer  
 Nunez Loreto lab  
 Palagi P farmer  
 Parenti Marc farmer  
**POST OFFICE, Ward L Jones Post-**  
**master**  
 Raggio Clayton R farmer  
 Rosetti F farmer  
 Santa Fe Ry J H Daily agt  
 Santos A S dairymn  
 Sarale Louis farmer  
 Schnabel Henry farmer  
 Shauer Arth farmer  
 Silva Dan gas sta  
 " M dairymn  
 Tallone B farmer  
 Trahern E T patrolmn  
 Van Buskirk Henrietta Mrs tchr Pub  
 Sch r Stockton

**LATHROP**

Abersold Alf N electn  
 " Christian farmer rt 1 bx 234  
 " Wm V farmer  
 Acoba Vincent R gdnr  
 Albert Edw (Mary) dairy  
 Albertson Rasmus E farmer  
 Alfieri Andw farmer rt 1 bx 217a  
 " Gasper gdnr  
 " Saml D rt 1 bx 217a  
 Alen Ethel Mrs tchr  
 " Robt H  
 Anderson A E rancher  
 " C A farmer rt 1

**THE PRINTWELL PRESS**

**ALBERT A. BAKER, Proprietor**  
**GOOD PRINTING**

**ECONOMY SHADE SHOP**

Window Shades Made to Order

Repaired—Reversed

632 East Market St.

Stockton, California

620

(1937) R. L. POLK &amp; CO'S

**LATHROP—Contd**

Andrews C A (Helen) rancher  
 " Edw rt 1 bx 177  
 Arnold Percy W  
 Aufdermauer Louis farmer  
 Avelar Jos D farmer rt 1 bx 25  
 Azevedo Ermel farmer  
 Baird A L rancher  
 Baker J W (Grace) farmer  
 Baldrige C W lab  
 Bauman Geo farmer  
 Beiso Jos lab  
 Benetti Bros ranchers  
 Benincasa Jos clk SP  
 " Santos (Rosa) lab  
 Beswick R Mrs rt 1  
 Bewley Gladys Mrs tchr Jub Sch  
 r Stockton  
 Bianchi Fred (Teresina) dairy  
 Biddinger H R rancher  
 Blackwell Harvey E  
 Blanchard Harry fishermn  
 Borges E J dairymn  
 Bracken A M (Ida) farmer  
 Brandon Bertha Mrs rancher  
 Brandt Louise (Ida) gas sta  
 Brazil J J dairy  
 Breakfield Jas W (Dora) farmer  
 Breeding Philbert farmer  
 Breitenbucher Ralph W (Edna) farmer  
 Brennan Florabel M Mrs tchr Pub  
 Sch  
 Brill Chas H farmer rt 1  
 Bringelson Geo lab  
 Brinkman John W farmer  
 " Otto C farmer rt 1 bx 246  
 Brockman Pearl (wid E J) farmer  
 " L H rt 1 bx 67  
 Bronzan N  
 Brown Sydney W lab rt 1 bx 221  
 Bruggerer Fred  
 Buchanan F rt 1 bx 226c  
 Bucher Jos farmer rt 1 bx 144  
 Buck A O carp  
 Camenzind Frank rancher  
 Campana G (Catherine) gdnr  
 Campbell Louis G farmer  
 Cargile Dellamore B Rev (Amy E)  
 pastor Church of Christ  
 " Walter P firemn  
 Carlile C K  
 Carlton Frank P (Fannie) farmer  
 Cartwright Geo L farmer rt 1 bx 65  
 " Robt R farmer  
 Castro Jim gas sta  
 Chadwick C dairy  
 Church of Christ Rev D B Cargile  
 pastor  
 Cluck J H farmer  
 Cole Frank farmer  
 Colori Peter rt 1  
 Cordes Fred farmer rt 1 bx 131  
 Costa F J dairy  
 " John L dairy  
 Castello Ida E (wid Jas F)  
 Counchman O P  
 Coykendall Frank S lab rt 1 bx 185  
 " Herb L (Jennie) farmer rt 1 bx  
 185  
 Crane Wm mech rt 1 bx 236  
 Crowther Ernest H agt SP Co  
 Cummings J farmer rt 1  
 Da Milano P farmer  
 Day H W farmer  
 DeCicco Gaetano lab  
 DeLima farmer rt 1 bx 196a  
 " Frank farmer rt 1 bx 189

Desmond F B teleg opr SP Co r  
 Manteca  
 Dethlefsen A H rt 1 bx 156  
 Diaz Joe (Sadie) rt 1 bx 34  
 Dike Herman E (Dora) rt 1  
 Dos Reis Manuel farmer  
 " Manuel jr dairymn  
 Drugg J Edw (Flo)  
 Dughi Henry dairymn  
 Dunlap Delius farmer rt 1 bx 54  
 Dyke L A farmer  
 Eak Fritz rt 1 bx 177  
 Ebersole Howard L cook  
 Eccles J H rancher  
 Egleston Lillian Mrs rancher  
 Elliott Artie (Juanita) (Juanita's En-  
 chilada Parlor) bgem SP Co  
 " Byrd farmer  
 " D C rancher  
 " Fred rancher  
 " Jas lab  
 " Nile (Agnes) auto mech  
 Emery Olga G  
 English Harry C farmer  
 Eubanks Louis T (Cora) barber  
 Faria J P rt 1  
 " Leonard J farmer rt 1 bx 75  
 Felix Tony A rt 1 bx 83  
 Ferkins A J rancher  
 Figaro G B Mrs  
 Fisher Raymond B rt 1 bx 172c  
 Flora Noah farmer rt 1 bx 136a  
 Flores Joaquin  
 " John farmer rt 1 bx 118  
 " Jos dairy  
 " Paul E farmer rt 1 bx 150  
 Foss Calvin V lab  
 " Wm C rt 1 bx 179  
 Frank Wm C rt 1 bx 198  
 Freeman Guy  
 " Joe lab  
 " Wm farmer  
 Freitas J L rancher  
 " John rancher  
 " Jos F farmer  
 " Lewis rancher  
 Frey David farmer rt 1 bx 247  
 " Howard lab  
 Furtado J B dairy  
 Gadwo Mamie farmer  
 Gamble Wm  
 Garland Edith Mrs asst Postmaster  
 " Lon A sec formn SP Co  
 Garner T E  
 Gascoyne Chas farmer  
 Gatto Luigi (Jessie) farmer  
 Gerlach Edw C farmer  
 " Henry D farmer rt 1 bx 243  
 " John C farmer  
 German Steph Mrs farmer rt 1 bx  
 130  
 Gilbeau Ernest W poultry rt 1 bx  
 119  
 Gilbert Thos lab rt 1 bx 111  
 Gilman Louise (wid C W) farmer  
 Glusing Carl farmer rt 1 bx 49b  
 " S rt 1  
 Gomez Mary A dairy  
 Grant Geo F farmer  
 " Geo H farmer rt 1 bx 32  
 Gustafson John rt 1 bx 177  
 Gynn Walter H mech rt 1 bx 173  
 Haha J P rancher  
 Hain Frank lab  
 Hall Geo farmer  
 Hammond W J farmer  
 Hancock A A Mrs farmer  
 Hanna Cyrus G farmer rt 1 bx 128

Hanson John poultrymn  
 Harnett Helen Mrs rt 1 bx 121  
 Hart Edw T (Daisy) farmer rt 1  
 bx 64  
 Hastie Rudolph O (Pearl) lab  
 Hatanaka Geo gdnr  
 Hatch Chas L rancher rt 1 bx 18  
 Hawkins Geo (Mary)  
 Haws W H dairy  
 Hayre Jack gas sta  
 Henderson H B teleg opr SP Co  
 Hill Glen H farmer  
 " Jas M farmer  
 Howard J C rancher  
 Howell Chas J jr farmer rt 1 bx 86  
 " Chas N farmer rt 1 bx 86  
 Hunter W B lab  
 Huxley S H garagemn  
 Johnson E D rancher  
 " Ross slsmn  
 Jones Jas G rancher  
 " Robt M carp  
 " Walter P farmer  
 Jordan Augusta M Mrs  
 Juanita's Enchilada Parlor (Artie  
 Elliott)  
 Kalin Danl farmer  
 Kerrick J D rt 1 bx 160  
 " Jefferson D farmer rt 1 bx 160  
 Kieleger Louis rt 1 bx 98  
**KLEIST FLORA J, Postmaster**  
 Klingner Henry kennel  
 Knight Ether T lab  
 Korekiyo Y gdnr  
 Kubl Wm rancher  
 Landingham O L rt 1 bx 48a  
 Langdon Vernon lab  
 Lawrence Hartwell rt 1 bx 237b  
 Lema Manuel J farmer rt 1 bx 170c  
 Lewis J Mitchell tchr  
 Lindquist N A (Pacific Die & Tool  
 Co) garage  
 Lindsay Clyde W farmer  
 Loung John L rancher rt 1 bx 202  
 " Paul B farmer rt 1 bx 202  
 Lucas Jas farmer  
 Lugea S lab  
 Luiz Tony D dairymn  
 Lundquist O C stockmn  
 Machado Joe S rancher  
 Madruga Manuel H dairymn  
 Marshall Manuel J rt 1 bx 59  
 Martin Gardner W well driller  
 " Ralph gas sta  
 " Thos jr rancher  
 Mattes Elmer L (Dorothy) farmer  
 " Norbert J (Ethel) clk  
 Mauro Matilda E rt 1 bx 220  
 " Tony farmer  
 McAlpin E rt 1  
 McCaugar Wm C farmer  
 McCargas Wm I farmer rt 1 bx 180  
 McCarty Patk lab  
 McClary Michl  
 McDonald Allen M farmer rt 1 bx  
 89  
 McKenzie Donald A towermn  
 McKisson H C rt 1 bx 207  
 McMurray H W (Belma)  
 Mendez F B dairy  
 Mendee Leanne rancher  
 Menor C S  
 Meyer Andy C (Daisy) farmer rt 1  
 " Arth farmer rt 1 bx 176  
 Meyers Jacob K signalmn  
 Miller Wm H (Wilma) genl mdse  
 Miniaci Caspero fctywrk  
 Monnet L L towermn

When You Need OFFICE HELP—

# HUMPHREYS

## SCHOOL OF BUSINESS

Free, Confidential, Employment Service

Phone 4134

Stockton

108 N. California St.

SAN JOAQUIN COUNTY DIRECTORY (1937)

621

Moore Bros soft drinks  
" Claude W farmer rt 1 bx 137  
Mott Alf D farmer  
" Ashley E farmer  
" Bruce R farmer rt 1 bx 81  
" Earl G farmer rt 1 bx 81  
Myers Jacob K signalmn  
Nelson Art (Helen)  
Nichols Laurence W (Reva) lab  
Nobles A C (Alice) lab  
" Robt F lab  
Noceti Antonio lab  
Novotny C A  
Olivieria Manuel F farmer  
Olson Ross farmer  
Ostini A rt 1 bx 82  
Ota K gdnr  
Ott Godfreid dairymn  
Pacific Die & Tool Co (N A Lindquist)  
Packer Albt C (Clara)  
Pagni A dairymn  
Peoples F M rancher  
Percival Frank L T farmer  
Perrine B E rt 1 bx 34a  
Perry Antone dairy  
" Frank rt 1  
Peterman Herman farmer  
Phillips Fred H farmer rt 1 bx 167  
Pierce Abram W rt 1 bx 218  
Pirlo Jas dairymn  
POST OFFICE, Mrs Flora Kleist  
Postmaster  
Price W T  
Probert Clyde dairy  
Procter E D rt 1 bx 48  
Prouty Austin L farmer rt 1 bx 122  
" Farrol A Mrs prin Pub Sch rt 1 bx 120  
" Lawrence A farmer rt 1 bx 120  
Queirolo A Enrico gdnr  
Radke John farmer rt 1 bx 90  
Rasmussen Irvin (Pearl) clk SP Co  
" Meyer lab  
Raulfno Joo farmer bx 73  
Reves J E  
Reichmuth Carl farmer  
" Joe farmer  
Reis Manuel D farmer  
Reliable Hatchery  
Reynolds Edw M (Bertha) farmer  
Richichi L J  
" Luigi lab rt 1 bx 180c  
Richmuth Frank (Hilda) farmer  
Riddle J H rt 1  
Riella Abbondio dairy  
Riverside Inn  
Rizzolo Ernest dairymn rt 1 bx 51  
Roberts F C rancher  
Rodgers Amos J dairymn rt 1 bx 133  
" Clarence clk rt 1 bx 133  
" Elvira I rt 1 bx 133  
" Geo R dairymn rt 1 bx 154  
" J M dairymn rt 1 bx 71  
" John J farmer rt 1 bx 133  
" Marguerite rt 1 bx 133

Rosebrock Herman farmer rt 1  
Rossi Agostino rt 1 bx 57  
Rowe A N dairy  
Rowse Rupert J rancher  
Rumrill S A gas sta rt 1 bx 190  
Russell Claud R (Irene) towermn  
SP Co  
" Fred E farmer  
" R C lab rt 1  
Ryan John J farmer  
" Louis farmer rt 1 bx 79  
Ryhiner Wm A carrier PO rt 1  
Salmon Bourdette W Mrs farmer  
rt 1 bx 178  
" Jas V farmer rt 1 bx 111  
" John B mech rt 1 bx 178  
" W B farmer rt 1 bx 178  
Sanguinetti Anna  
" Benj farmer  
" Ethelyn nurse  
" Victor gdnr rt 1 bx 15  
Sarmiento Tony dairy  
Schaffner Luther farmer  
Schobert Edw F (Josephine) farmer  
Schoeman Chas dairy  
Seamands Mary C rt 1 bx 221  
Segers John R rancher  
Sharp Cyril J rancher  
Shupe Claude  
Shuart C W  
Silva A J  
" Anton A farmer  
" Frank T dairy  
" John S dairy  
" Manuel F dairy  
Silveria H A dairy  
Slack Mary J  
Smith B F farmer  
" G L tchr Pub Sch r Stockton  
" Harvey R (May) dairymn  
" John farmer rt 1 bx 174  
" John farmer rt 1 bx 227a  
" Kenneth  
" Wm H farmer rt 1 bx 174  
Soto Paul lab  
Southern Pacific Co Ernest Crowther agt  
Sperry Sarah J Mrs  
Spino Frank lab  
" Mike lab  
Squires L J farmer  
Stadler Robt dairy  
Stone Frank Mrs farmer  
Sutter Ray lab  
Sutton John B (Olive) towermn  
Takahashi C gdnr rt 1 bx 169  
Tanner Ross O farmer  
Telles M A dairymn  
Tierreira Manuel dairy  
Tholke Henry farmer rt 1 bx 124  
Thompson Roy G farmer  
Thomsen Alex J (Lydia) farmer rt 1 bx 209  
Thran Wm H (Bertha) farmer rt 1 bx 129  
Thurman Geo M farmer  
Tillery Frany dairy

Tobin Jas farmer rt 1 bx 200  
Townsend W W farmer  
Travis John H farmer  
Turk Frank lab  
Valliero Albt slsmn rt 1 bx 133  
Viera John V farmer  
Vierra C B dairy  
Vote H F  
Wade C E carp  
Ward Malcolm G towerman  
Wasser Irwin hotel rt 1 bx 233  
Watson C W  
" J R farmer  
Webster Elliott pntr rt 1 bx 174b  
Weinhold Edwin lab  
Wennhold Ernest farmer  
Whisman Jos R trucking rt 1 bx 153  
Whited Milo  
Whitlock Harry C (Alice) merch  
Wiggin Edna C tchr rt 1 bx 152a  
" Frank P gas sta  
Wigley Jefferson butcher  
Wilbur A A farmer  
" Jas carp rt 1 bx 175a  
Williamson W Y vet surg and contr  
Wilson David M dairymn rt 1 bx 115  
" Park rancher  
Wirth H A farmer  
Wolfe Harold M (Freda) farmer  
" Howard W (Freda) mech  
" J Milo tchr  
" Jacob M (Emma) farmer  
Zimmer L J farmer

### LINDEN

Adams Emma rt 1 bx 170  
Allen B E agt Union Oil Co  
Alling Lucius farmer rt 1 bx 93  
Allison Saml G garage  
Anderson Clarence C farmer rt 1 bx 82  
" W Chas orchardist PO bx 83  
Ashley Chas PO bx 82  
" John H mech PO bx 82  
Atkins Geo W driller PO bx 71  
" Jas N gas sta  
" Natopha G  
Avansino Alice F Mrs rt 1 bx 99  
" John E rt 1 bx 99  
Avico N farmer rt 1 bx 33  
Ayers Alf C farmer rt 1 bx 58  
Bacigalupi C farmer rt 1 bx 62  
Bacon Bursay S (Fannie) farmer rt 1 bx 133  
Bafica N rt 1 bx 74  
Bailey Edw F farmer rt 1 bx 131  
Barbagelata Angelo farmer rt 1 bx 63  
Barling Frank D farmer rt 1 bx 60  
Basalto R farmer rt 1 bx 61  
Berry Geo H orchardist  
" Thos A carp PO bx 54  
Bettis Hayes lab PO bx 98  
Bishop Ralph T bkpr PO bx 65  
Blohmne Betty A rt 1 bx 38  
Board Jas M farmer PO bx 44  
Bonham Andy custodian Pub Sch

# THOMPSON-HOFF INSURANCE AGENCY, INC.

All Forms of Insurance

232 N. Sutter St.

Stockton, Calif.

Phone 6156

# THE EQUITABLE

Life Assurance Society of the U. S.  
LIFE INSURANCE AND ANNUITIES

## C. R. DONNELLY

DISTRICT MANAGER  
605 CALIFORNIA BLDG. STOCKTON

622

(1937) R. L. POLK & CO'S

### LINDEN—Contd

Box Frank D millwkr rt 1 bx 175  
Breitenbucher Chas A farmer rt 1 bx 141  
Bryan Marshall N farmer  
" Sarah R Mrs rt 1 bx 187  
Buechecker Otto farmer rt 1 bx 167  
Buckley Grace Mrs PO bx 45  
Buhles Ruth tchr Linden Union High Sch  
Burbans Robt C farmer rt 1 bx 45  
Burlando C lab rt 1 bx 121  
Burton John H Farmer rt 1 bx 186  
Cady Alva W lab PO bx 92  
" Chas farmer rt 1 bx 117  
" Walter A mech  
Caminata John farmer rt 1 bx 56  
Canclini Jas orchardist rt 1 bx 3  
Canepa Dave J farmer rt 1 bx 149  
" N rt 1 bx 33  
Capello Augusta lab PO bx 67  
Carroll Wm H farmer rt 1 bx 183  
Chase Clarence D farmer rt 1 bx 116  
" Clarence M farmer rt 1 bx 116  
Christensen Chas P (Linden Lbr Co)  
Clinton Leslie H fruit grower rt 1 bx 173  
Cole Duke farmer PO bx 101  
Compiano Enrico farmer rt 1 bx 159  
" Orillio lab rt 1 bx 158  
Costa John rt 1 bx 70  
Cox Fredk A farmer rt 1 bx 115  
" Mollie J Mrs  
" Perry H farmer rt 1 bx 201  
Cucco C farmer rt 1 bx 69  
Cuneo Andw L gas sta atdt  
" Jos farmer rt 1 bx 10  
Dal Porto Felice C farmer rt 1 bx 203  
Davis Leslie farmer PO bx 102  
Debendetti Frank rt 1 bx 192  
Delucci Andw farmer rt 1 bx 138  
DeaMartini Cesare farmer PO bx 56  
" Giuseppe farmer rt 1 bx 183a  
" Nicola fruit grower rt 1 bx 184  
Dentoni G PO bx 116  
Devinenzi Aug L farmer rt 1 bx 460  
" Lawrence farmer rt 1 bx 169  
DiCarlo Gaetano barber PO bx 129  
Dondero P rt 1 bx 35  
" Rico farmer rt 1 bx 35  
Doscher John H (Linden Service Sta)  
" Wm H garage  
**DRACE J ANDERSON, Postmaster**  
Drunsfeld Chas farmer rt 1 bx 144  
" Geo farmer and plmbr PO bx 81  
" Jas farmer rt 1 bx 144  
Drury Leslie M tchr Linden Union High Sch r Stockton  
Eaton Edw A farmer rt 1 bx 5  
Eckstrom Oscar W farmer rt 1 bx 148  
Edwards Robt L farmer rt 1 bx 197  
Eiler Gus (Henriette C) farmer rt 1 bx 166  
Erba F rt 1 bx 34  
Farando Bert farmer  
Filipelle J Olin farmer rt 1 bx 38  
Fine Lena E farmer rt 1 bx 186  
Flor Pio farmer PO bx 73  
Fonseca Manuel M farmer rt 1 bx 39  
Foote Frank lab rt 1 bx 53  
" Ralph M hdw  
Fossetti G farmer rt 1 bx 105  
Frazier John E farmer rt 1 bx 110

Galgiani Attilio farmer rt 1 bx 80  
Garavano Guisepe farmer rt 1 bx 66  
Gill Geo D (Elsie C) farmer PO bx 50  
Gogna F farmer rt 1 bx 119  
Gordin Wm H lab rt 1 bx 6  
Grosclose Eli D farmer  
Gruppe C Francis rt 1 bx 42  
" Eug M farmer rt 1 bx 44  
" John C farmer rt 1 bx 44  
" Maude T Mrs farmer rt 1 bx 42  
Guernsey Fred A farmer rt 1 bx 142  
Hales Jos H farmer PO bx 45  
" Jos S orchardist PO bx 45  
Hamilton Porter R farmer rt 1 bx 198  
" Wm B wchmn  
Hansen Chas O driver rt 1 bx 90  
" Geo F farmer rt 1 bx 90  
" Maggie Mrs rt 1 bx 90  
Harrison Chas N justice of the peace (Douglass Township)  
" John farmer PO bx 94  
" Maude rural carrier  
Hathaway Lorenzo farmer rt 1 bx 45  
Hedger Clarence A farmer rt 1 bx 75  
" Jos U B farmer rt 1 bx 75  
Helteell Clyde E farmer rt 1 bx 199  
" Elmer A farmer rt 1 bx 198  
Hendrix Hiram E farmer rt 1 bx 36  
Hight Herb S mgr Walnut Plant  
Hirata Roy farmer rt 1 bx 83  
Holman Boyd P farmer rt 1 bx 13  
Houston Ralph G farmer rt 1 bx 177  
Hughes Edw J PO bx 62  
" Margt T Mrs tel opr PO bx 62  
Hunt Bros orchardists  
Hunter Harvey W lab  
" J Miss farmer rt 1 bx 37  
Ikeda T farmer rt 1 bx 40  
Johnson J E orchardist rt 1 bx 61  
Jordan Chas W (Linden Garage Service Inc)  
Kennon F E lab  
Kenyon Mary T tchr PO bx 62  
Ketchum Frank farmer rt 1 bx 55  
Kirk Evans P farmer star rt  
Kittle Mark V slsmn rt 1 bx 54  
Krenz Fredk W ironwkr rt 1 bx 57  
Kromann Alma T Mrs rt 1 bx 120  
Kyddson T W Dr PO bx 122  
Ladd Edwin H farmer rt 1 bx 112  
Lagomarsino Angelo rt 1 bx 31  
Lagorio Guy farmer rt 1 bx 29  
" John rt 1 bx 23  
" Louis J farmer rt 1 bx 204  
" Raymond farmer rt 1 bx 204  
Landoni Jos rt 1 bx 134  
Larrien Theresa T tchr Linden Union High Sch  
Leonardini Jas W farmer rt 1 bx 73  
" John J farmer rt 1 bx 73  
" Lazzaro farmer rt 1 bx 73  
" Peter L farmer rt 1 bx 193  
Lewis Ellen I Mrs PO bx 61  
Linden Garage Service Inc (C W Jordan)  
" Grammar School C E Whaley prin  
" Jersey Dairy (F F Strong)  
" Lumber Co (C P Christensen)  
" Market (Robt Ryburn) meats  
" Service Station (J H Dosher)  
" Union High School R E Reed prin  
Luchetti Tony rt 1 bx 2  
Lynch Harry P farmer rt 1 bx 7

Lyons John J farmer rt 1 bx 88  
Macomber Frank H farmer rt 1 bx 78  
Maffeo Gaetano farmer rt 1 bx 66  
Magnuson Herb D banker PO bx 103  
Mangili Dick farmer rt 1 bx 19  
Marugliano Edw farmer star rt  
" Nat farmer rt 1 bx 77  
Martini Guisepe farmer rt 1 bx 76  
" Luigi farmer rt 1 bx 76  
Marvin Albt custodian High Sch  
McPherson Wm G farmer PO bx 97  
Matsuda C rt 1 bx 72  
Meier Frank L orchardist rt 1 bx 164  
Messick Chester W farmer rt 1 bx 137  
" Edwin F lab rt 1 bx 137  
Metzler Albt E farmer rt 1 bx 171  
" Henry W farmer rt 1 bx 168  
Meyer Cecil K farmer  
" Henry C farmer rt 1 bx 43  
Miller Chas H orchardist rt 1 bx 172  
" David W orchardist rt 1 bx 189  
" Margt F tchr Pub Sch PO bx 117  
" Raymond W farmer rt 1 bx 179  
Mills Frank R farmer rt 1 bx 94  
Moldrop Beatrice I tchr Linden Union High Sch  
Morrill Chas PO bx 86  
" Earl A farmer rt 1 bx 163  
Motoike S farmer rt 1 bx 196  
Moynett Cyril F orchardist PO bx 91  
" Frank W orchardist PO bx 85  
Myers Perry  
Nedham Harold lab  
Oliveri Nicola farmer rt 1 bx 92  
Pauletti D rt 1 bx 24  
" Pasquale rt 1 bx 20  
Peckham Eug C tchr Linden Union High Sch  
Peterson Peter farmer  
Piacentini Edw H lab  
" Fred farmer  
Pickle Mattie S Mrs nurse rt 1 bx 13  
Pimentel Jose J farmer rt 1 bx 9  
Podesto Antonio farmer rt 1 bx 46  
" John farmer rt 1 bx 46  
Poggio John H farmer rt 1 bx 4  
Porter L linemn rt 1 bx 51  
**POST OFFICE, J Anderson Drace**  
**Postmaster**  
Potter Bertram W farmer PO bx 107  
" Lloyd A farmer  
Prather Exa L PO bx 74  
Punta P farmer rt 1 bx 140  
Purviance Bruce R driller  
Raggio A rt 1 bx 81  
Ratto G rt 1 bx 25  
Reed Robt E prin Linden Union High Sch  
Risso John C farmer rt 1 bx 102  
Ross Jos farmer  
Rossi Steve farmer rt 1 bx 62  
Russell Clarence R orchardist PO bx 63  
Ryburn Bradley orchardist rt 1 bx 8  
" Robt (Linden Mkt)  
Sanders Charneck W farmer rt 1 bx 86  
Saaguinetti A H rt 1 bx 22  
" Chas rt 1 bx 21  
" Frank rt 1 bx 21

# PLUMBING and HEATING

J. R. LYONS

Office

1006 N. Wilson Way

"Day and Night" Automatic Water Heaters

ESTIMATES GLADLY GIVEN

Stockton

Telephone 7613

SAN JOAQUIN COUNTY DIRECTORY (1937)

623

## LINDEN—Contd

" Jos N orchardist rt 1 bx 206  
" Roy L farmer rt 1 bx 202  
Sayles Helen tchr Linden Union High Sch  
" Rosetta Mrs farmer rt 1 bx 80  
Schoessens Thos farmer  
Seymour Chas W slsmn rt 1 bx 52  
Shelly Oliver R farmer PO bx 70  
Smith Bert lab  
" Esther R Mrs tchr  
Snyder E L farmer rt 1 bx 42  
Solari Frank farmer rt 1 bx 194  
" Louis farmer rt 1 bx 128  
" Victor farmer rt 1 bx 195  
Spooner Fred K PO bx 132  
Stagnaro Antonio farmer rt 1 bx 136  
" B Eug farmer rt 1 bx 136  
Stanley J Harold lab rt 1 bx 181  
Staples Richd L lab PO bx 111  
Strmiska Jos farmer rt 1 bx 146  
Strong Fred F (Linden Jersey Dairy) PO bx 114  
Swank Amon farmer  
Treat Jas F PO bx 137  
" Walter D lab  
Union Oil Co B E Allen agt  
Vacarrea G PO bx 86  
" L rt 1 bx 139  
Van Wagner Harry lab rt 1 bx 183  
Vernego G farmer rt 1 bx 71  
Vickery Jesse H PO bx 57  
Waters Chas lab PO bx 137  
Watson Frank B farmer rt 1 bx 176  
Welsh Edwin A farmer rt 1 bx 48  
" Matthew A farmer rt 1 bx 48  
Westing Henry jr farmer rt 1 bx 79  
Whaley C E prin Linden Grammar Sch  
Whitcomb Cora rt 1 bx 148  
White Jas H farmer PO bx 51  
Wilson Kath A Mrs tchr Pub Sch PO bx 96  
" Wallace W lab PO bx 96  
Wimer Jacob D farmer  
Yocum Maurice N farmer PO bx 130

## LOCKEFORD

(See Lodi RFD also Peters)

Allen Fred C farmer  
Anderson Tip constable  
Babick Michl farmer  
Baigalupi John A genl mdse  
Barbour Nathan P phys  
Bacon Chas A well driller  
Berns Wm P barber  
Black Geo lab  
Booth Chas E farmer  
Breitenbacher Warren W farmer  
Bryant Wayne L lab  
Bunds J Wm farmer  
Burns Jas lab  
Chitwood Isaac N  
Clasen Chas J farmer  
" Fredk W farmer  
" Peter H farmer  
Clifford Claude L  
COIL JESSE A, Postmaster  
" Lester A  
Conroos Carl W farmer  
Crawford John W pntr  
Daley Thos H  
Davis Marshal E farmer  
Demangeot Hannah L Mrs  
Deveggio Louis A  
Fetzer Henry farmer

Figge Fredk J garage  
" Geo F L farmer  
Fogg Agnes S  
Freeman Chas H phys  
Hammond Jas A mgr Union Safe Deposit Bank  
" John C vineyardist  
Harrell Frank M farmer  
Hill Steph D butcher  
Hirtel John lab  
Hunter Ada V Mrs  
" Geo A carp  
Inglis Henry farmer  
" Josephine H tchr  
" Kath nurse  
James Alf E mech  
Jauch Arth F lab  
Jones Albt H lab  
" G F  
" Mildred B  
Katz Albt farmer  
" Helen A  
Knudsen Carl E V farmer  
Kraai John lab  
Lipp Edw J lab  
Livingston Robt A plmbr  
Locke Donald student  
" Geo H vet surg  
" Georgiana W tchr Pub Sch  
" Howard C farmer  
" Neil C farmer  
Lockeford School  
Matts John lab  
McCary Simpson M farmer  
McKindley Ernest M farmer  
Fegerle Robt G farmer  
Meier Gottfried farmer  
Miller Arth L lab  
" Chas lab  
Mohrman-Elmer C farmer  
Mohrman Chas D farmer  
Montgomery Chandler R farmer  
" Lester W farmer  
" Winfield S farmer  
" Winfield S jr  
Moore Otha A carp  
Myers Chas W farmer  
" Elmwood L farmer  
" Howard A farmer  
" Perry H farmer  
Netz Emanuel J lab  
Parker Thos B farmer  
Patton Henry H lab  
POST OFFICE, Jesse A Coil, Postmaster  
Rice Wm C lab  
Rocque Chas E mach  
Robertson J N  
Ross Lewis E  
Schwartz Henry B farmer  
Smart M F barber  
Smith Chas F (Lena M) farmer  
" Robt J farmer  
Southern-Pacific Co F W Sowerby agt  
Sowerby Fred W agt SP Co  
Stacks Mary J Mrs  
Strobridge Minnie H Mrs  
Swanson Chas farmer  
Thomas John farmer  
Thompson Christina Mrs  
Thorp Jas E dairyman  
Union Safe Deposit Bank J A Hammond mgr  
Vickrey Mary C Mrs  
" Walter A lab  
Vix John lab

Walker Hampton C carp  
Ward Jas B farmer  
Weiblen Frank farmer  
Young Carrie L

## LYOTH

Burt Morris E clk SO Co  
Case R E wchmn SO Co  
Daily Harry sec formn WP Ry  
Flanigan Jas D towermn  
Lowes Wm K clk SO Co  
Lyle G E towermn  
Miller Norman E agt WPRy  
Norris Dan B towermn  
Western Pacific Railway N E Miller agt  
Williams H E loader SO Co

## MANTECA

Abatangle Sadie M clk Manteca Cash Grocery r Lathrop  
Aby Nellie E Mrs r614 Park av  
Adams John C (Rebecca M) h348 Poplar av  
" Lester (Maye) h440 N Grant av  
Ainsworth Roy (Mildred) driver Shell Oil Co h130 Sequoia av  
Albers Ernest (Mary) (Hi & Al's Golden State Garage) h129 Rose la  
Alfieri Pauline clk Domenic Marchitelli r Lathrop  
Alvez Manuel lab h833 Edythe  
American Legion Hall 210 E Yosemite av  
Andrada Henry (Alicie C) lab h220 Stewart av  
Andro Wm (Vaselekey) barber 125 W Yosemite av h155 Jessie  
Angel Jesus (Esperanza) h139 S Washington  
Armbrust Louis (Edna) carp h113 Rose la  
Asdrubel Manuel (Lillie) h Garfield av  
Ash Jos T mech Spurr Motor Co bx 645  
Atilano Theresa maid 627 W Yosemite av  
Austin Saml J (Edna) auto dlr 123 S Main r121 do  
Babcock Virginia L r209 N Lincoln av  
Baker Melvin (Edna) hlpr Kraft Phenix Cheese Corp  
Bakes Alf lab r801 W Yosemite av  
Bale Glen N (Cath) h111 Jessie  
Bank of America National Trust & Savings Assn L C Schwartz mgr 2 E Yosemite av  
" of Manteca A F W Barth pres J M Toomey v-pres L L Riddell asst cash 200 W Yosemite av  
Barber Howard r121 N Maple av  
" Hulda Mrs Indwykr S T Hickman r121 N Maple av  
" Jas L (Hulda) h121 N Maple av  
Barbour Oil Co (W E and W H Barbour) State Highway 99  
" Walter E (Thelma) (Barbour Oil Co) h297 Veach av  
" Wm H (Barbour Oil Co)  
Barkhill Jackoline r205 W Yosemite av  
Barnhill Florence Mrs restr 205 W Yosemite av h203 do  
" Myrtle waiter Mrs Florence Barnhill r203 W Yosemite av