

# INDIVIDUAL BROKERAGE CO.

LOANS NEGOTIATED

WITHOUT SECURITY

\$10 and UP

316 Bank of America Bldg.

Tel. 2313

Stockton, California

536

## LODI STATISTICAL REVIEW

Furnished by the LODI DISTRICT CHAMBER OF COMMERCE

Name of City—LODI, CALIFORNIA.  
Slogan or subphrase—"THE HOME OF THE FLAME TOKAY GRAPE."  
Form of Government—Councilmanic.  
How incorporated—City, sixth class.  
Population—1930 U. S. Census report, 6788; local estimate at present: 10,925.  
White population of age—males, 1477; females, 1661—1930 census.  
Total colored population—0.  
Total number of males in city, 3406; females, 3382—1930 census.  
American-born population is 78.8% of the whole.  
Predominating nationalities of foreign-born residents—Russians, Germans & Italians.  
Area—Two square miles.  
Altitude—51 feet above sea level.  
Climate—Mean annual temperature, 60.1 degrees F.; average rainfall, annual 18.28 in.  
Parks—4, with total acreage of 70 acres, valued at \$53,500.  
Assessed Valuation—1934-1935—\$4,876,895      1935-1936—\$5,023,665  
Tax Rate—1935—City, \$1.00; General County, \$1.34; Schools, \$1.13; total \$3.47  
1936—City, \$1.00; General County, \$1.33; Schools, \$1.26; total \$3.59  
Bonded Debt: 1935—\$103,666.68      1936—93,000.02  
Bank Deposits: Dec. 31, 1935—\$5,460,000.00      Dec. 31, 1936—\$6,239,000.00  
Postal Receipts: 1935—\$50,521.80      1936—\$56,402.09  
Telephones: Dec. 31, 1935—City: 1902; Dist. 671. Dec. 31, 1936—City: 2000; Dist. 723  
Gas Meters: Dec. 31, 1935—1980      Dec. 31, 1936—2214  
Water Meters: June 30, 1935—2267      June 30, 1936—2342  
Electric Meters: June 30, 1935—2579      June 30, 1936—2711  
Churches: 22, representing 18 denominations.  
Industry: Chief industry of the city and surrounding territory: Agriculture.  
Number of Manufacturing Establishments: 45, employing 2200 men and women.  
Principal Manufactured Products are: wines, brandy, canned fruits and vegetables, tire retreading equipment, pumps, cement products, fruit products, planing mills, sheet metal works, beverage bottling plants, ice cream and dairy products, sausage and meat products, ice, cold storage and pre-cooling plants, auto tops and bodies, metal products, printing and lithographing, feed mills and poultry supplies, tools and auto accessories, creameries, tents and awning, bakeries, foundry, box factories and cooperage plants.  
Trade Area: Retail area has radius of 12 miles and population of 20,000.  
Newspapers—1 daily, 1 bi-weekly.  
Hotels—5, with total of 214 rooms. Newest hotel opened in 1928.  
Railroads—City served by 3 railroads as follows: Valley route of Southern Pacific; Central California Traction Co., which is jointly owned by Santa Fe, Western Pacific and Southern Pacific.  
Highways—The following highways run through, or to, the city: U. S. Highway No. 99; State Highway 53, and State Highway No. 24.  
Airports—One.  
Amusements—Largest auditorium in city seats 2200 persons, Armory; Two moving picture theatres, seating capacity of 1022 and 800 persons.  
Number of golf courses—One.  
Hospitals—2, with total of 30 beds.  
Education: Number of public schools, 6, including 1 high school. Number of Parochial schools, 2. Number of pupils in public schools, 2624; in parochial schools, 364; number of teachers in public schools, 88; in parochial schools, 21.  
Public Libraries—1, with total of 22,500 volumes.  
City Statistics—total street mileage, 39½ miles with 26 miles paved.  
Electric railway, 1 mile  
Sewers, 12 miles (storm and sanitary)  
Capacity of water works: 7500 G.P.M., with daily average pump of 2,850,000 gallons; 28 miles of main. Plant valued at \$55,872.57.  
Fire Department has 5 paid men, with 2 Seagrave Trip. Comb. Engines in 2 station houses. Value of fire department real estate with equipment, \$23,117.  
Police Department has 7 men, with 1 station. Value of Police Department, real estate and equipment, \$3885.00.

D. D. Smith, Secretary-Manager, Lodi District Chamber of Commerce.

# C. B. BULL

DISTRIBUTOR

SIGNAL OIL PRODUCTS

"HOME OWNED"



Phone Lodi 888

100 N. Cherokee Lane, opposite Elm St.

Lodi

Winners of Gold Medals 1934-1936 California State Fair

## Shewan-Jones, Inc.

QUALITY

California Wines and Brandies

Executive Office: 85 Second Street, San Francisco

Branches: Chicago, New York

Plant: Lodi, California, P. O. Box 730

Telephone 478

## THE UNION ICE COMPANY

Phone 630

Lodi, California

Air Conditioned Ice Refrigerators

Let us also attend to your heating problems

OIL FURNACES

OIL HEATERS

A call was left for you.

Whose Phone Number is it?

*The Answer is in the Numerical  
Phone Guide in back of this book*

# ELECTROLUX INC.

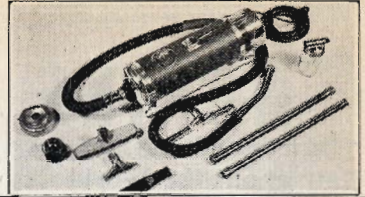
CLEANER AND AIR PURIFIER

106 DIFFERENT USES IN HOME

Telephone 2219

110 N. San Joaquin St.

501 Belding Building



537

## POLK'S LODI CITY DIRECTORY 1937

COPYRIGHT, 1937, BY R. L. POLK & CO.

### LODI AND THE LODI DISTRICT

NATION'S GRAPE LAND

Climate and Soil Bring Many Crops of Wonderful Quality!

Every Month is Harvest Time!

Lodi—Rich agricultural and industrial city of 10,923 population, is located in Northern San Joaquin County in the extreme northern part of the Great San Joaquin Valley, on U. S. 99 highway, 14 miles north of Stockton and 34 miles south of Sacramento. The Lodi District is Served by three transcontinental railroads which move from 15,000 to 20,000 carloads of products of the soil annually, 75% of which is perishable or refrigerated freight.

The Grape and Wine Industry—Leads the District's diversified productions. Four thousand men and women working 100 days, pick, pack, truck, ship and crush Lodi's huge grape and wine production annually. Lodi District Wineries produce one-fourth of the nation's wine, and Lodi is now recognized as the wine center of the United States. Lodi Wineries produced 14,639,305 gallons of wines and brandies in 1935, and 11,689,479 gallons in 1936.

The combined cooperage capacity of Lodi's sixteen wineries is 24,129,500 gallons, which will be materially increased for the 1937 vintage season. This is made possible by the immense vineyard acreage of the district, exceptional quality of grapes produced, the large production of the vineyards, the many varieties of grapes that grow to perfection here, and the ideal climatic conditions of the district during the vintage season. These advantages make it possible to produce almost every known kind of wine under the most favorable conditions. Seven of Lodi's wineries are cooperative, owned and operated by the vineyardists of the District.

Lodi, Home of the Flame Tokay Grape—All Tokay grapes produced in the United States are grown within a radius of 35 miles from the City of Lodi, and the Lodi District proper produces 82% of the entire crop. From three to six million crates of these famous grapes are shipped annually from the Lodi District to the markets of the world.

The Soil and Climate—Of the Lodi District produces grapes of unusual quality. Some fifty varieties grow to perfection here. Shipping records show 5,816 carloads of grapes shipped by rail from Lodi in 1936.

The large grape production is not Lodi's only agricultural industry. There are thousands of acres of orchards, consisting of plums, peaches, prunes, nectarines, cherries, pears, apricots, olives, figs, almonds and English walnuts. There are also vast acreages of celery, asparagus, potatoes, onions, berries, grain, sugar

# MARINE OFFICE OF AMERICA

Offices and Agents  
Throughout the World

311 East Main Street, Stockton  
Telephone 3271

538

beets, seed crops, melons, beans, spinach, tomatoes, rice, corn, vegetables, alfalfa and other forage crops, in fact, practically every crop produced in the United States can be grown successfully in the Lodi District, and our agricultural production is so diversified that some crop is harvested each month in the year. The fruit and vegetable canneries of the district operate almost the entire year and distribute about \$2,000,000 to the growers and workers of the community annually.

Lodi—Is the principal city in this thriving District and is surrounded by the following towns and trade centers: Lockeford, Clements, Victor, Acampo, Thornton, Terminus, Live Oak and Youngstown, and many other shipping stations.

Lodi, the Clean City—Is a pleasant, healthy, livable place with 26 miles of paved streets, well lighted with ornamental electroliers and lined with public buildings, modern business structures and attractive homes with beautiful lawns and colorful gardens. Twenty-two churches grace its landscape with large and beautiful structures which provide adequate spiritual opportunities.

Lodi's Public Schools Rank High—In California's high standard educational system, and its union high school is accredited by universities with splendid scholarships, and with its five modern elementary schools and two parochial schools, offer every available advantage in educational achievements. Number of pupils in public schools, 2,624; parochial schools, 364; number of teachers in public schools, 88; in parochial schools, 21.

Lodi—Has a councilmanic form of government; is incorporated as a city of the sixth class; 51 feet above sea level; its mean annual temperature is 60.1 degrees F.; average annual rainfall, 18.28 inches.

Lodi—Has four parks with a total area of 70 acres. 78.8% of Lodi's population is American born. Its bank deposits exceed \$6,000,000 and postal receipts for 1936 were \$56,402.09.

Lodi City Taxes are 99% Paid. City Tax records reveal that Lodi taxes were 99% paid in both 1935 and 1936, and street assessments are 100% paid, which is no doubt a national record for cities of comparable size.

Industrial Lodi—Located in the center of one of the Nation's outstanding agricultural districts, with many residential advantages, has within the last few years, developed into one of California's industrial centers. Lodi's forty-five manufacturing plants and forty-nine fruit shipping companies and organizations employ over 2,500 workers and have an annual industrial payroll that will exceed two million dollars for 1937. Principal manufactured products are wines, brandy, canned fruits and vegetables, tire retreading equipment, pumps, cement products, fruit products, planing mills, sheet metal works, beverage bottling plants, ice cream and dairy products, sausage and meat products, ice, cold storage and pre-cooling plants, auto tops and bodies, metal products, printing and lithographing, feed mills and poultry supplies, tools and auto accessories, creameries, tents and awning, bakeries, foundry, box factories and cooperage plants.

Industrial Future Promising—During the last ten years not a single industrial plant has left our community; once established, they stay and grow with Lodi; its municipal water and power rates are among the very lowest offered by any city in California; its \$1.00 tax rate based upon a 50% valuation assessment is attractive; its ever increasing population and local, or home, consumption of the many products manufactured here; the great variety of raw materials produced in the Lodi District; adequate transportation facilities; favorable climatic conditions; and the civic pride, cooperation and boosting spirit of the Lodi District population is back of all of Lodi's industries.

# RALPH CARTER

TIRE AND SERVICE CO.

PHONE 1100

Stockton

SUTTER STREET AT MINER AVENUE

CARTER SUPER TREADS  
BATTERIES  
ONE STOP SERVICE  
UNITED STATES TIRES

539

Live, Play and Work—The ultimate aim of every family is to become established comfortably in a home and community that is, at once, their retreat and their place of business activity. It is the keen desire of all people to be able to enjoy life to its fullest, to give and to take as existence demands.

A community that can at the same time offer, to its residents, a thriving economic center of activity, a place to work and prosper, and still offer the diversities of every conceivable type of recreation and social pastime, is a community that will be near and dear to the hearts of its citizenry.

Recreation Plentiful in the Lodi District—The City of Lodi is proud of its four parks with their tennis courts, ball diamonds, play grounds, plunge, well kept lawns, trees, shrubs, and flowers. Outstanding among these is the beautiful Municipal Lake Park with its clear water, bathing beaches, boating, picnic grounds, shade trees and drive. Baseball, football, softball and aquatic sports all have their season and receive the support of the community. The scenic and tricky Woodbridge Golf and Country Club with its natural hazards is only ten minutes from the business section of Lodi; with one-half dozen other golf courses within 30 to 60 minutes by automobile. Trout streams and mountain lakes in the Sierra mountains are reached by automobile in one to two hours, and two to three hours will take you to dozens of high Sierra resorts, snow capped peaks, the wonderful Calaveras Big Trees, Yosemite Valley, Lake Tahoe, Silver Lake, the Mother Lode country, and hundreds of scenic and appealing camp sites. Two and one-half hours by automobile will also reach San Francisco, Oakland, Berkeley and all San Francisco Bay attractions, and just a little longer will find you at Santa Cruz or Monterey Bay points. Twenty to thirty minutes ride will reach the wonderful striped bass waters of the Delta west of Lodi, also the duck, snipe, pheasant and quail hunting grounds. A short hour's trip takes you to Sacramento, the State Capital.





SMALL ANIMAL GAS HEATED HOSPITAL  
 VETERINARY SUPPLIES OF ALL KINDS  
 At Wholesale Prices

**DR. F. H. SAUNDERS**

336 E. Lafayette Street Stockton Phone 695



**POLK'S  
 LODI CITY DIRECTORY  
 1937**

COPYRIGHT, 1937, BY R. L. POLK & CO.

For List of Abbreviations See Page 16

**ALPHABETICAL LIST OF NAMES**

Abbott Jay S driver Service Lndy r rt 3  
 Aberle Geo meat ctr h424 Tokay  
 " Lena r428 Maple  
 " Steph (Barbara) lab h428 Maple  
 Abrahamson Victor H (Helen) printer 114 W  
 Pine h614 W Elm  
 Abrams Sidney (Thelma) liquors 114 N School  
 and mgr Travelers Hotel h112 N School  
 Abshire Andw J (Bertha) h3 N Grant av  
 Acker Benj F auto mech r115 N School  
 " Harold W (Edna C) carrier P O h515 N  
 School  
 " Harry W (Anna) h115 N School  
 " Jesse N r115 N School  
 " Laura (wid D H) h708 N Church  
 " Sherwood E (Marie) carrier P O h609 N  
 School  
 Ackerman Barbara r220 Eden  
 " Bertha r224 N Cordier  
 " H W h331½ Flora  
 " Jacob (Pauline) farmer h220 Eden  
 " Peter h311 E Walnut  
 Ackermann Edw P clk Kenneth Prentice  
 r119½ N Rose  
 " Hugo W lab Shewan-Jones r606 S Washn  
 Ackerson Elmer L (Alma) clk h420 W Locke-  
 ford  
 Adams Arth F (Eliz) wtchmn h5 W Lockeford  
 " Clifford R (Ruby) h410 Forrest av  
 " Elton r1029 S Garfield  
 " Frank C (Emelia) estimator PG&E Co h418  
 W Oak  
 " Henrietta (wid Wm) r508 E Pine  
 " Jennie sten E H Kundert r16 W Oak  
 " Leon R (Louise) h312 E Oak  
 " Norman C r418 W Oak  
 " Rebecca r605 S School  
 " Robt lab r321 Acacia  
 Addington Bruce gas sta atdt Water & Jones  
 r215 W Walnut  
 " Dorothy r233 S Pleasant av  
 " Leander F (Nannibelle) lab h215 W Walnut  
 Adelman Ray (Marjorie) carp r209 W Walnut  
 Adolf Gottlieb (Kath) h rear 329 Hilborn  
 Adrian Edna h217 E Lockeford  
 " Geo H (Louise) lab h313 Tokay  
 Agathos Tom lab h412 S Stockton

Ah Bo (Palace Meat Mkt) r21½ S Sacramento  
 Albina Biagi (Elena) lab h420 S Main  
 Aldridge Leona r420 N Church  
 " Margt S (wid Jarnagin) h420 N Church  
 " Pearl R (wid Benj) r224 Louie av  
 Allee Gordon M (Grace) mgr Maxwell Motor  
 Supply Co h705 N Church  
 Allen Bert C (Doris) (Allen Equipment Co)  
 r415 W Oak  
 " Equipment Co (W C and B C Allen) mach  
 130 N Cherokee la  
 " Jessie M (wid W A) h521 W Daisy av  
 " Mable M tchr Lincoln Sch r521 W Daisy av  
 " Noel r415 W Oak  
 " Rebecca (wid Benj) r219 N Washn  
 " Tessie V Mrs tchr r19 N Church  
 " Wm C (Allie) (Allen Equipment Co) h415  
 W Oak  
 Allington Alonzo E (Alice) h23 N Church  
 " Augustus r23 N Church  
 " Eleanor sten r23 N Church  
 " Eunice sten r23 N Church  
 " F Virginia sten r23 N Church  
 " Walter M (Elsie) h106 Flora  
 Allison Robt G (Emma) h504 N Pleasant av  
 Alma Apartments (Mrs B H. Schroeder) 309  
 W Pine  
 Altnow Arth trucker r432 E Walnut  
 " Clarence E (Edna) ranchwkr h432 E Walnut  
 Amburn Gus (Mary) timekpr Foster & Wood  
 Canning Co h120 W Pine  
 " Mildred clk r120 W Pine  
 American Fruit Growers Inc J M Prentice mgr  
 435 S Main  
 " Legion 201 N Sacramento  
 " Legion Auxiliary 201 N Sacramento  
 Amo Roscoe H ranchhd r216 1st  
 Analitis Alen A (Martha) baker 118 N Sacra-  
 mento-h404 E Oak  
 Anderson Alene A r218 N School  
 " Alta r302 E Oak  
 " Arth (Nyda) lab h11 S Garfield  
 " Hattie r302 E Oak  
 " Kerby T (Barbara) bkpr h415 S School  
 " Mary L (wid Jas) h302 E Oak  
 " Myrtle M (wid Saml) h218 N School  
 " R B reprmn Max Sweet

# T. W. THOMAS -- INSUROR

TELEPHONES 1355 and 5605

BELDING BLDG., 110 N. San Joaquin Street

Stockton, California

LODI CITY DIRECTORY (1937)

541

## ANDERSON

" Sudie B (wid Wm H) r713 W Elm  
Anshutz Iva Mrs confr 500 E Oak r504 do  
" Ross (Iva) ice and fuel 500 E Oak h504 do  
Apustulatos Thereos h rear 115 E Walnut  
Archer Dorothy Mrs r425 W Locust  
" Fanny r215 Tokay  
" Mary E r400 S School  
" Oliver T r400 S School  
" Titus O (Edna) servmn PG&E Co h400 S School  
Archinal Herman L (Gladys) h309 W Pine  
Arena A & Co Ltd fruit buyers 225 S Main  
Armstrong Arth L (Lillian E) h302 W Elm  
Arnbrister Wm M (Molly) lab h710 S Stockton  
Aronhalt Danl W h111 S Pleasant av  
Artz John J (Eliz) lab h619 S Sacramento  
Asahi Hotel (Naotaro Horimoto) 28 N Main  
Ashbaugh Walter G (Leonora) h212 N Stockton  
" Wm G r212 N Stockton  
Athearn P A mgr Turner Hdw & Impl Co  
Atkins Peter M L (Eva) cattle buyer h508 E Pine  
Atkinson Edw F (Eunice) office mgr Super Mold Corp r352 E Pine  
" Winfield lab r237 Redwood  
Ataway Wiley B (Annie) chauf h516 W Lodi av  
Atwood Hotel A F Martin mgr 39 S Sacramento  
" Levi h101 S Sacramento  
Auch Aug (Kath) prin Lincoln Sch h322 E Elm  
" Fredk E r322 E Elm  
Augsburger E D phys 5½ W Pine r112 N School  
Austin Alden E (Esther) h325 E Oak  
" Eug A (Edith) lino opr The Lodi Times h117 W Elm  
" Harry A (Frieda) h325 E Oak  
" John R (Carolyn) slsmn h112 S Church  
" Robt W slsmn r112 S Church  
Aveggio John (Esther) lab Community Grape Corp h426 W Lockeford  
Axup Beulah Mrs r115 W Lodi av  
Ayers Melber F slsmn Peerless Milling Co r rt 2 bx 20  
" Wm D (Mary) h316 E Oak  
" Xenophen D (Lydia S) h627 W Locust  
Babcock Wayland M sec-treas Industrial Finance Co r Acampo  
Babis Saml (Martha) (Goodfellows Coffee Shop) h120 N Pleasant av  
Bachman Albt lab h430 Maple  
" Christina. h430 Maple  
" Henry (Elma) lab h rear 321 Poplar  
" John r430 Maple  
" Lydia r430 Maple  
" Theo lab r430 Maple  
Backman Saml S (Vivian) beauty shop 9 N School h217 E Lockeford  
" Vivian Mrs beauty opr S S Backman r217 E Lockeford  
Bader Anton r328 E Lodi av  
" Otto (Rose) h328 E Lodi av  
Baerwald Alf gas sta atdt Albt Rivas r403 N School

## BAERWALD

" Erhard L (Elsie) embalmer Hale & Bawden h15 W Locust  
" Fredk (Amelia) h403 N School  
" Rosamond slswn Lodi Dry Goods Co r121 N Hutchins  
Bailey Frances L Mrs sten E A Boether r504 Eden  
" Jos clk W G Burgdorf  
" Mamie (wid Geo) h321 Tokay  
" Marvin E gas sta 500 W Lodi av r rt 3 bx 164  
" Marvin E jr (Frances L) gas sta atdt M E Bailey h504 Eden  
Bainbridge Jas A r214 W Oak  
Baker Alex (Eva) lab h601 S Central av  
" Bertha r322 E Pine  
" Gladys r601 S Central av  
" Halsey A (Marcella) mach h322 E Pine  
" John E h500 Harold  
" Louis r601 S Central av  
" Margt Mrs r436 E Oak  
" Robt H r500 Harold  
" Virgil (Zenobia) h601 S Central av  
Balasques Natalio (Natividad) r426½ Railroad av  
Baldwin Eldon r721 S Cherokee la  
" Elsie (wid Harry) tchr Emerson Sch h721 S Cherokee la  
" Grace r721 S Cherokee la  
Ball Harry E gas sta 46 N Sacramento r rt 1 bx 342  
Balliet Frank D (Josephine) vineyardist h607 W Elm  
" Kath Mrs h320 Tokay  
Bandeem Mary (wid J R) h316 S Sacramento  
" Wm (Verne) brkmm h316 S Sacramento  
Banek Allie A lab Shewan-Jones r505 E Walnut  
" Edgar chauf Peerless Milling Co r505 E Walnut  
" Marie (wid Jacob) h505 E Walnut  
" Thelma r505 E Walnut  
**BANK OF AMERICA NATIONAL TRUST & SAVINGS ASSN (Lodi Branch) Lloyd Mazzer V-Pres-Mgr, 31 S School cor W Oak, Tel 1000**  
Bansmer Esther K Mrs h400 E Locust  
Barbee Galena B (wid Geo) h412 Flora  
Barber Isabel waiter K J Heuvers r16 W Oak  
Barbour R P (Mary C) slsmn h120 Chestnut  
Barengo Dino B (Mae) chemist h325 N Church  
Barker Leonard M slsmn Electric Equip Co r4 W Pine  
" Thos O (Georgia) slsmn h224 S Lee av  
Barkis Lucy L (wid H B) h403 E Pine  
Barnebey Ruby tchr Lodi Union High Sch r404 W Walnut  
Barnes Henry C (Fannie L) lab h307½ Acacia  
" Wm J (Ada) h320 Eden  
Barracough Dorothy maid 211 S Lee av  
Barratt Lucy (wid Jesse) r604 W Locust  
Barron Ira M (Mabel) carrier P O h617 W Locust  
Barrow Fred r209 W Pine  
Barsanti Frank r104 E Lodi av  
Barsatti Alfredo (Dora) lab h329 E Walnut  
Bartels Lena (wid Hans) h424 E Walnut  
" Stanley r424 E Walnut

STOCKTON IRON WORKS  
ENGINEERS — FOUNDERS — MACHINISTS — FORGESMITHS  
DISTRIBUTORS

# JOHN A. ROEBLING'S SONS WIRE ROPE

Harrison and Lindsay Sts.

Day or Night Phones 1092-1093

Stockton, California

542

(1937) R. L. POLK & CO'S

Barth Art gro 220 N Cherokee la r rt 1 bx 1  
 " Otto whs 200 N Cherokee la and restr 290 do  
 " Theo (Caroline) ins 14½ W Pine h516 S School  
 Bartlett Mary F r333 E Walnut  
 Barzelotti Amy L (wid L F) h509 W Elm  
 Bassi Lois L tchr Lodi Union High Sch r401 W Walnut  
 Battaglia Frank (Rose) lab h509 S Sacramento  
 Battee Philip S (May) lab h321 Maple  
 Bauer Adolph (Caroline) winemkr h24 S Rose  
 " Albt (Sadie) h426 Railroad av  
 " Arth (Mabel) clk h408 N School  
 " Clarence J (Teresa) printer h326 E Oak  
 " Elmer r426 Railroad av  
 " Emil (Mildred) lab h723 S Garfield  
 " Emma H waiter Otto Barth h217 E Lockeford  
 " Erna waiter Flying A Waffle Shop r21 N Washn  
 " J printer H J Tolliver r334 E Oak  
 " John h514 W Locust  
 " John C (Erna) slsmn Union Ice Co h21 N Washn  
 " Pearl r426 Railroad av  
 " Wm (Eliz) bicycles 17 S Sacramento h323 S Stockton  
 Bauermeister John F Rev (Elsie) pastor St Peters Evangelical Lutheran Ch h115 W Locust  
 Bauman Alma Mrs (Model Beauty Salon) r rear 422 W Pine  
 " Chris (Alma) coremaker h rear 422 W Pine  
 Baumann Caroline (wid Jacob) h331 E Elm  
 " Gertrude r515 S Garfield  
 " Hildegard r515 S Garfield  
 " Hugo M Rev (Anna) pastor German Congregational Ch h515 S Garfield  
 Baumbach Abr (Rose) h545 Tokay  
 " Arth (Rosa) vineyardist h645 S Cherokee la  
 " Carl (Eliz) h508 Eden  
 " Charlotte (wid Lenhard) r317 Eden  
 " Chas (Anna) (Rudy & Charlie's) h714 N Church  
 " Edmund (Kath) gas sta atdt h300 Flora  
 " Irene r508 Eden  
 " Konrad G (Christine) lab h217 Tokay  
 " Robt C (Bertha) h413 E Oak  
 Baumbach Wm (Bertha) sewing mach 12 W Oak h318 E Walnut  
 Bava Angelina fruitwkr r205 E Oak  
 " Evelyn cannerywkr r205 E Oak  
 " John (Mary) h205 E Oak  
 " Mary clk r205 E Oak  
 " Tony gdnr r205 E Oak  
 Bawden Susan A Mrs (Hale & Bawden) h11 W Elm  
 Bayless Havilah J (wid M L) h419 S Sacramento  
 Baysinger Floyd I (Fern) lab h122 N Cherokee la  
 Beard Caroline L (wid Wm) h107 De Force av  
 Bechtold Adolph (Carolina) rancher h421 E Elm  
 " Edw chauf Lodi Home Bakery  
 " Louise (wid Geo) r515 E Lodi av  
 " Wm (Alma) carp h310 N Sacramento

Bechtold Edw R (Lydia) h428 Railroad av  
 " Fred (Rose) h701 Lincoln av  
 Beck Bertha r229 Flora  
 " Frieda r229 Flora  
 " Geo (Rosemary) lab h213 Redwood  
 " Geo F cement wkr Ed Spiekerman r712 S Garfield  
 " Gottlieb (Carrie) lab h529 Harold  
 " Jacob r529 Harold  
 " John (Kath) h229 Flora  
 " Martha r229 Flora  
 Becker Dorothy r405 Forrest av  
 " Emil (Mary) h405 Forrest av  
 " Walter roofer h604 S Sacramento  
 Beckman Bessie M bkpr M Newfield & Sons r rt 1 bx 366  
 " Earl B rancher h530 S School  
 " Geo O (Helen) sec Super Mold Corp h225 W Oak  
 " Hilda bkpr r307 W Oak  
 " John F r235 S Hutchins  
 " Le Moin F (Aileen) slsmn h517 W Pine  
**BECKMAN OTTO F (Louise) Hay, Grain, Wood and Coal, Lodi and Lockeford, 630 N Sacramento, Tel 688, h235 S Hutchins**  
 " Philippina (wid Henry F) h307 W Oak  
 " Sophia C Mrs h211 S Stockton  
 Beeskau Arth (Alma) lab h719 S Washn  
 Beglau John (Justina) h501 Flora  
 " John jr r501 Flora  
 Behrendt Oscar meat ctr I W, Loewen r356 E Walnut  
 Beier Geo W (Edith) h229 S Pleasant av  
 Beitz Albt F (Edna) chauf h329 Vine  
 Bekedam Martin electn r608 S Central av  
 " Peter (Anna) h608 S Central av  
 Bekker Augusta (wid B B) h627 E Pine  
 " Danl clk h627 E Pine  
 " John clk r627 E Pine  
 Bell Donald J tchr Lodi Union High Sch h708 W Oak  
 " Geo N (Josephine) lab h224 S Church  
 " Oscar F r107 S Sacramento  
 " Wm J (Mary A) fruits 298 N Cherokee la  
 Bellman Henry J (Lenora) bldg contr 322 W Oak  
 Bellows Laura B (wid A B) h319 N Church  
 " Reta W bkpr Lodi News Sentinel r319 N Church  
 Belo Adriano Mrs r422 Railroad av  
 Beltz Danl (Emma) phys 104 N School R307 h521 S Central av  
 Bender Edwin r509 Flora  
 " Fred C (Amelia) h345 N Stockton  
 " Kath (wid John) h509 Flora  
 " Lydia r509 Flora  
 " Lydia (wid Fred) h536 Hilborn  
 " Riney r408 E Oak  
 " Theo (Hester) police h20 S Church  
 " Theo C (Edna) dentist 5½ W Pine h315 W Oak  
 Benedict Elmer A (Addie) h357 E Walnut  
 Benjamin John P (Evelyn) tchr Lodi Union High Sch h320½ W Walnut  
 Bennett Edw P (Meta) formn PG&E Co h341 E Walnut



# B. C. WALLACE & SON

## MORTICIANS

Phone Stockton 4667

520 N. Sutter St., Stockton

LODI CITY DIRECTORY (1937)

543

### BENNETT

" Primus Rev (Martha) pastor First Christian Ch h309 S School

Benson Addie (wid J M) h201 W Elm

Bentley Eliz (wid R W) h416 E Elm

Benton Dorothy clk Chamber of Commerce r506 E Pine

" Jos E (Maude) h506 E Pine

Berardengo Michl porter Milano Hotel r8 S Main

Berding G Herman auto mech h405 E Walnut

Berg Albt (Eliz) h222 E Pine

" Carl (Cath) lab h329 Cherry dr

" Edw (Lillie) lab h343 S Stockton

" Edwin (Olinda) mech h309 W Daisy av

" Harold W (Yvonne) chemist h118 S Lee av

" John (Caroline) r309 W Daisy av

Bergantz Geo E (Margt) wtchmn h433 N School

" Milton M r433 N School

Bernhardt Fred (Alice) lab r1432 S Central av

Beronio Della (wid Dominico) h421 N Pleasant av

Berreth Edwin (Laura) lab h604 S Sacramen-to

Berry Margt tchr Lodi Union High Sch r105 N Hutchins

Bersi Mack (Angeline) lab Shewan-Jones h604 S Sacramento

Bertsch Deborahl r328 E Lodi av

" Gideon r328 E Lodi av

" Henry E (Julia) slsmn Diamond Match Co h111 S Central av

" Kenneth C clk Safeway Stores r111 S Central av

" Wilmer (Lexie) bartndr h224 S Church

Bethel Tabernacle Rev D E Morkan pastor 200 W Locust

Betz Henry (Emma) fndrywkr h327 Flora

" Wm cement wkr Ed Spiekerman r308 W Walnut

Bevalaqua Ratto gas sta 303 N Church r Stockton

Bewley Gertrude E Mrs real est 106 W Pine R 1 r409 W Pine

" Hattie B (John C Bewley & Co) h412 W Walnut

" John C (Gertrude) h409 W Pine

### BEWLEY JOHN C & CO (Hattie B Bewley)

Established 1905, Real Estate, Loans, Insurance and Rentals, 10 City Improvement Bldg, 106 W Oak, Tel 47, Res Tel 1197-R

Bianchetti Nazarino (Annette) winerywkr h408 S Church

Bianchini John lab h423 W Lockeford

Biasotti Chas (Mary) lab h609 S Sacramento

Bial Walter lab h422 Harold

Bice Jos H r323 E Locust

" Wm E (Martha) barber Hotel Lodi Barber Shop h323 E Locust

Bigler Berthold (Martha) mach h115 Chestnut

Billigmaier Albt (Mollie) h715 S Garfield

Billigmeier Walter F (Ruby) gro 620 S Central av h201 W Elm

Bird Eugenia R (wid Danl) h318 W Pine

Birk Reinhold Rev (Wilhelmine) pastor Salem Reformed Church h232 S Pleasant av

Birxey Letitia Mrs nurse r625 W Lockeford

Bischel Henry (Kath) fruitwkr h428 E Oak

Bischof Erna r312 E Pine

" John (Christine) (Bischof & Lange) h312 E Pine

" Julia r312 E Pine

" Theo r312 E Pine

**BISCHOF & LANGE (John Bischof, H A Lange) Real Estate and Insurance of All Kinds, Legal Reserve Insurance of All Kinds, 9 S Sacramento, Tel 345**

Bishofberger Harry lab r533 Maple

" Oscar (Eliz) lab h533 Maple

Bispikas Michl (Alvae) lab h229 Tokay

Bitterman Albt (Amelia) ranchwkr h425 Hil-born

" Ferdinand C (Orvilla) lab h505 Hilborn

" Jacob (Louise) rancher h423 Cherry dr

" Leon r423 Cherry dr

" Leone r207 W Elm

Bitzer F K h607 N Sacramento

" Harlan (Erna L) clk E L Thomas r22 N Cherokee la

" Philip H (Annie) mgr Home Apts h217 E Lockeford

Black Anna M (wid Laco) h27 S Cordier

" Chas A (Princess) h411 S School

" Glen A (Ethel) fieldmn Pacific Fruit Exchange h425 S School

Blackstone Edw (Mary) chauf h521 Harold

Blair Eliz M r311 N School

" Jas W batteries 107 N School

" Mary (wid Wilson) h311 N School

Blaisdell Ida (wid C E) h17 W Locust

**BLAKELY JOHN F (Alice M) City Clerk and Assessor, h115 S Rose**

" Margt sten City Hall r115 S Rose

Blakeslee Flora E Mrs h208 W Pine

Blanchard Francis (Eleanor) h215 S Rose

Blandon Rex r21 W Lodi av

Blasdell Maggie E Mrs r12 S Hutchins

Blazer Flora Mrs tchr Emerson Sch r rt 3 bx 212

Blehn Harold r425 Louie av

" Paul lab r425 Louie av

" Sol M restr 23 N Cherokee la r1203 S Central av

" Wm (Mary) oilwkr h425 Louie av

Blewett Arth E (Bernice) h230 W Daisy av

" C Howard (Georgia) dairy 309 S Sacramento h216 S Cordier

Blickle Eug H (Myrtle) bartndr Smith & Steward h201 E Oak

" Eug H jr r201 E Oak

Blodgett Florence A (wid John) h201 N School

" John M jr rancher r201 N School

Blohm Carl cement wkr Ed Spiekerman r rt 3 bx 191

Blosche Herman baker hlpr Lodi Home Bakery r724 S Washn

" Paul (Anna) lab h724 S Washn

Bluck Lemon H (Ruth) farmer h414 W Elm

" Ruth Mrs prin Needham Sch r414 W Elm



704 EAST MARKET

PHONE 163

544

(1937) R. L. POLK & CO'S

- Blue Ribbon Milk Co J G Gall mgr 22 S School  
 Blume Victor (Dorothy) orchdst h543 E Pine  
 Board Arth L (Ida O) mgr PG&E Co h110  
 Crescent av  
 " Jas A r110 Crescent av  
 Bockenheim R F phys 5½ W Pine  
 Boden Annie (wid Wesley) h610 N Church  
 Boehm Mary r rear 411 E Elm  
 Boehmer Albt P (Bertha) h1049 S Cherokee la  
 " Arth C (Florence) phys 4½ N School R 27  
 h625 W Oak  
 Boese Aug H (Albertina) h709 W Elm  
 " Emil F (Roxie) gro 600 S Sacramento  
 " Gustav (Marcia) h304 E Lodi av  
 " Paul bartndr Sidney Abrams r321 S Church  
 Boether Aug E (Maria) h207 S Rose  
 " Eug A (Geraldine) collns 106 W Oak R 16-18  
 h103 S Rose  
 " Paul H garage 21 E Elm  
 Boettcher Louisa (wid Christ) h118 E Walnut  
 " Wm r112 E Walnut  
 Bogart Oswald R (Hulda) h337 Hilborn  
 Bohn Bert winery wkr r841 S Central av  
 Bohnet Emma r329 E Pine  
 " Kath (wid Martin) h329 E Pine  
 " Orville L (Viola) clk h333 Hilborn  
 Boleswig Wm lab r230 N Central av  
 Bolinger Hugh J (Elsie) phys 104 N School  
 R 205 h415 W Elm  
 Bollinger Sarah h222 W Pine  
 Boltin Effie A (wid A H) r315 S Pleasant av  
 Bonotto Vincent (Virginia) h347 E Lodi av  
 Boone Amos R Rev (Neta) pastor First Cong-  
 regational Ch h223 N School  
 Boone F D tchr Lodi Union High Sch r121 N  
 Hutchins  
 Boozeny Andw clk r326 Maple  
 " Geo (Nellie) cement wkr Ed Spiekerman  
 h326 Maple  
 " Nick lab r326 Maple  
 Borden's Ice Cream Co J G Gall mgr 22 S  
 School  
 Borey Abel A (Alta) mgr Hotel Lodi h7 S  
 School  
 Borlo Emil baker Spiros Stathatos r118 W Elm  
 Borst Evan I (Dorothy) tchr Lodi Union High  
 Sch h228 Crescent av  
 Boschee Viola r533 Tokay  
 Bosh Betty waiter J C Smith r229 S Pleasant av  
 Bossert Dorothy (wid Johannes) h505 Tokay  
 " Edw (Bertha) h206 Flora  
 " Johannes jr carp r505 Tokay  
 Botts Mildred Mrs sec-treas Henderson Brós  
 Co r245 S Pleasant av  
 Bourne Daisy (wid Oliver J) h15 W Lodi av  
 Bovard Frank r201 W Elm  
 Bower Fred ice wkr r9 W Oak  
 Bowling Jas H (Sarah) h401 S Central av  
 " Mabel r229 S Hutchins  
 Bowman Eliz r800 S Garfield  
 " Eliz (wid F J) h258 Vine  
 " F Easton slsmn r258 Vine  
 " Flavius E h800 S Garfield  
 Bowser Lawrence lab r310 N Sacramento  
 " Marcus (Allie) gas sta 127 N Sacramento  
 h310 do  
 Boyce Erma L vineyardist h417 N School  
 Boyd Arch D (Rose) fieldmn Amer Fruit  
 Growers h308 E Walnut  
 " Rose Mrs slswn Lodi Dry Goods Co r308 E  
 Walnut  
 " Sarah D (wid Jas) r617 W Locust  
 " Wilma R Mrs sten Calif Fruit Exchange  
 h315 E Pine  
 Boyer Minnie M Mrs dresses 24 N School h315  
 E Oak  
 " Velma M slswn Mrs M M Boyer r315 E Oak  
**BOYNTON AMY L, Librarian Lodi Public Li-  
 brary, r717 W Locust**  
 " Chas A (Vesta) (Fink Cleaners) h309 E Oak  
 " Chas L jan h717 W Locust  
 " Lawrence W (Ruby) mech h309½ E Oak  
 " Linn F (Beatrice) (Weihe Drug Store) h211  
 S Lee av  
 Brack Anna h115 W Elm  
 Brackett Chas F (Christine) auto repr 12 S  
 Stockton h11 N Central av  
 Bradanini Caesar (Jennie) lab h205 S Church  
 Bradbury Bernice sten r315 S School  
 " Wm C (Clara) h315 S School  
 Bradford Jesse L W (Iola) bartndr Smith &  
 Steward h17 N Central av  
 Brady John (Christina) plstr h337 E Walnut  
 " Kenneth L r337 E Walnut  
 Braghetta Walter J (Mary) farmer h416 E  
 Walnut  
 Brakel Harry Mrs h807 S Washn  
 " Henry r807 S Washn  
 Brand Fenton r221 Eden  
 " Justus r221 Eden  
 " Melvin restr wkr John Kestin r221 Eden  
 Brandon Frank h102 E Walnut  
 Brantley Richd F (Nancy B) lab h403 E Pine  
 Bray Clyde A (Clara) driver Diamond Match  
 Co r337 E Flora  
 Brengier Browse bkpr r216 W Elm  
 Brenneise Jacob (Christina) lab h216 Tokay  
 Bresnan Clyde J phys 4½ N School R 11  
 Brewer Saml lab r312 Forrest av  
 Bridges Donna tchr Lodi Union High Sch r316  
 W Elm  
 Brierly Wm M h330 E Locust  
 Brietmeyer Carl W (Sylvia) clk h331½ E  
 Lodi av  
 Briggs Roy C (Alice) h207 S Hutchins  
 Bringham May r521 S Cherokee la  
 Brinson Betty D clk PG&E Co r Acampo  
 " Earl blksmith 217 N Sacramento r Acampo  
 Brix Herman hlpr Krieger Motor Co r525 E  
 Locust  
 Brockney Alvin br mgr Shell Oil Co r540 E  
 Walnut  
 Brokofsky Lawrence L (Jennie H) carp h507  
 E Elm  
 Brooks Chas lab r320 E Locust  
 " Chas E (Etta) lab h320 E Locust  
 " Elno r320 E Locust  
 " Frank (May) lab h400 W Lockeford  
 " Hazel r320 E Locust  
 " Leila r320 E Locust  
 " Thos lab r320 E Locust  
 Brosnikoff Herman meat ctr J W Dietz r508  
 E Oak

# Dohrmann Wolf Agency

GENERAL INSURANCE

Telephone 113

113 N. San Joaquin St., Stockton

LODI CITY DIRECTORY (1937)

545

## BROSNIKOFF

" John (Susan) lab h508 E Oak  
Bround Johanna (wid Jacob) h319 S Sacramento  
Brown Apartments Edith M Brown mgr 200 E Lodi av  
" Burt W Rev (Annie D) pastor Seventh Day Adventist Ch h517 E Pine  
" Chas E (Emery & Brown) h319 Forrest av  
" Edith M mgr Brown Apts h200 E Lodi av  
" Elbert M chemist Shewan-Jones  
" Ernest lab r322 N Sacramento  
" Eva G Mrs r357 E Walnut  
" Frank E (Laura) driver PG&E Co h319 E Walnut  
" Fred M (Eliz) cement wkr Ed Spiekerman h508½ Tokay  
" Hollis E (Edith) h210 N Cordier  
" Jack r343 Poplar  
" John A (Angell) lab r343 Poplar  
" Louis G (Mitchell Koenig & Brown)  
" Miriam G r517 E Pine  
" Verne C Rev (Vida M) pastor First Methodist Episcopal Ch h212 S Church  
" Wm (Carmela) winery wkr h17½ W Pine  
" Wm M (Lena) real est 601 E Pine  
" Wm R lab Shewan-Jones r100 S Main  
Browney Howard (Violet) boxmkr h rear 228 E Lodi av  
Brum Geo r445 Tokay  
" Jacob (Eliz) lab h445 Tokay  
" Wm r445 Tokay  
Brumfield Hobson barber 9 W Pine  
Brunner Benj H (Emma) (Davis & Brunner) h545 E Lodi av  
" Roland O meat ctr M P Folse r545 E Lodi av  
Bruns John F (Maude) h409 E Walnut  
" Russell r409 E Walnut  
Bruton Milton A (Lydian A) slsmn h rear 411 E Elm  
Bryant Frank O (Florence) prsmn The Lodi Times h16 S Church  
Buch Burnis nurse Masons Hospital r209 N School  
Buchanan Richd W br mgr Standard Stations Inc r112 N School  
" Robt A (Edith) sanitarium 408 E Pine  
" Robt A jr (Margt) slsmn h228 Tokay  
Buchold Fred wtchmn Shewan-Jones  
Buckingham Raymond (Della) millmn Valley Lumber Co of Lodi h508 E Pine  
" Ross h111 E Locust  
Buckmaster Laneil clk J R Hepper r220 W Oak  
" Lee (Mamie) gauger h220 W Oak  
Bue Conrad D (Loretto) eng h24 S Pleasant av  
" Loretto V Mrs asst libr Lodi Public Library r24 S Pleasant av

Buechler Frieda beauty opr Mrs F S Coomes r16½ S Church  
Buel Chas L (Emma) h217 E Oak  
Buell Frank R (Alvina) firemn h323 E Walnut  
" Julius (Una) lab h108 E Walnut  
Buford Chas R r232 S Hutchins  
" Henry C (Hazel) mgr S A Gerrard Co h232 S Hutchins  
" Jas (Rose) h325½ N Church  
" Rose Mrs bkpr S A Gerrard Co r325½ N Church  
Bull Albt H (Louisa) carp h217 S Church  
**BULL CLIFFORD B (Kathryn) Distributor Signal Oil Products, 100 N Cherokee Lane, Tel 888, h111 N Cherokee Lane, Tel 290 (See Lodi tab insert)**  
" Everett L (Iliene) clk C B Bull h321 S Church  
" Leonard E driver Service Lndy r217 S Church  
Bullard Opal waiter John Kestin r416 S Central av  
Buller Eleanor (wid A D) r509 S Central av  
" Martha nurse h509 S Central av  
Bullock Geo r17½ W Pine  
Bulson Mary (wid A E) h335 E Pine  
Bunce Lee R (Inez N) tchr h409 E Locust  
Burbank Clara Mrs r611 N Sacramento  
" Conrad (Magdalena) lab h rear 714 S Stockton  
" Henry (Christina) h714 S Stockton  
Burch Erna r520 Harold  
" Marlow (Nielma) h235 Hilborn  
Burdg Chas A (Delia E) h215 W Oak  
Burg Edwin auto mech E A Test  
Burgdorf Geo C (Alma) carp h316 W Walnut  
" Walter G (Meta) gro 502 W Lodi av  
Bürgen Ira C (Henrietta) firemn h427 Vine  
Burger Edwin r801 S Washn  
Burgstahler Adele sten G M Steele r rt 3 bx 481  
" Christian E ironwkr h203 W Oak  
" Elsie C chf opr PT&TCo r419 W Locust  
" Esther clk Lodi Home Bakery r203 W Oak  
" Frieda J tel opr r203 W Oak  
" Gus A (Elsie) h419 W Locust  
" Martha clk F W Woolworth Co r203 W Oak  
" Meta clk r203 W Oak  
" Sylvester bkpr r203 W Oak  
" Violet E bkpr r203 W Oak  
Burk Williard (Edna) h237 Hilborn  
Burkart Karl (Margt) shoe repr 107 S Central av h440 Hilborn  
Burkholder Wm H (Frances) rancher h211 S Central av  
Burlington Earl E clk E F Graffigna r rt 2 bx 13

Cushman Gasoline Engines

Bob-a-Lawn Power Mowers

Pumps — Hoists — Electric Light Plants

## THOMAS R. BROWNE

826 E. Main St., Stockton

POWER MACHINERY

Telephone 1962

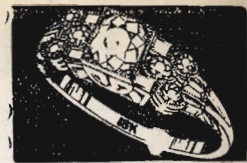
WE BUY OLD GOLD AND PAY CASH

# PESCE & CO.

"CREDIT JEWELERS"

Also Men's Clothing on Credit

211-213 E. WEBER AVENUE, STOCKTON TEL. 256



546

(1937) R. L. POLK & CO'S

Burns Frances beauty opr G W Kelm r19 N Church  
Burrell Beulah Mrs tchr Lodi Union High Sch r15 S Hutchins  
Geo A (Beulah) mgr Pac Tel & Teleg Co h15 S Hutchins  
Burrson Herschel electn hlpr Electric Equip Co r311 E Elm  
Burton A O bar tndr Sidney Abrams r112 N School  
Bush Chas r408 E Oak  
Bussinger Chas gas sta atdt r611 S Central av  
Butchie Carl H lab Shewan-Jones r206 Flora  
Butschat Alice E r111 N Central av  
" Harry W r111 N Central av  
" Wm Rev (Mary) pastor Salem Evangelical Ch h111 N Central av  
Buttall Edwin (Leah) mech Krieger Motor Co h815 S Central av  
Bybee J Kenneth (Marjorie) (City Drug Store) h11 W Elm  
Cain Elmer (Florence) clk Shewan-Jones h347½ N Stockton  
" Emmett J (Roberta) electn h208 W Locust  
" Eva N (wid John) h230 Olive ct  
" Roscoe B (Mona M) servmn PG&E Co h444 Flora  
Calandri Kathleen r216 Rush av  
CALAVERAS CEMENT CO, John E Crowe, Representative, 242 E Miner Av, Stockton, Tel 1429  
Calhoun Delmer (Violet) h442 Tokay  
CALIFORNIA FRUIT EXCHANGE, David R Ritchie District Mgr, 208 Farmers & Merchants Bank Bldg, 104 N School, Tel 807  
" Pine Box Distributors A F Horstkorta mgr 403 S Main  
Callis Lillian bkpr City Transfer Co r rt 3 bx 446  
Calpakis Mary Mrs waiter H M Walter r17 N Garfield  
" Peter (Mary) cook H M Walter h17 N Garfield  
Calvert Donald A slsmn Alex Salomon r425 E Walnut  
" Ernest J r425 E Walnut  
" Floyd R (Esther) meter tester PG&E Co h425 E Walnut  
Cameron Majorie sten r309 S Garfield  
Campi Marino ranch wkr h435 S Sacramento  
Campodonico Vincent F (Tillie) h317 Flora  
Canepa Chas S (Myrtle) mgr F L Canepa h12 S Rose  
" Frank L gro 108 W Oak r Angels Camp  
" Virgil C clk F L Canepa r12 S Rose  
Canish Julia Mrs h rear 418 Eden

Canton Boyle (Nellie) chauf h125 E Locust  
Caple John W (Christine) collr PG&E Co h412 N School  
" Margt E tchr r412 N School  
Cappa Olga r347 E Lodi av  
Carey Edw C h124 W Pine  
" Evelyn r124 W Pine  
Carlisle Florence (wid E A) r400 S School  
Carlock Albt C (Lula) wtchmn h349 E Lodi av  
Caros Tony lab r232 Rush av  
Carossi Cecelia clk r216 S Lee av  
" John (Bertha) pntr h216 S Lee av  
" Philip winery wkr r216 S Lee av  
Carpenter Robt r410 Forrest av  
Carr David C (Susie H) h333 E Elm  
Carroll Austa Mrs r605 S School  
" Ed (Lucille) clk Turner Hdw & Implt Co h12 W Lodi av  
" Herman C (Opal) whsmn h424 Cherry dr  
" Jas E r12 W Lodi av  
" Patk F (Pauline) lab h rear 333 E Elm  
" Rose Mrs r227 N Central av  
" Wm D (Norma) winery wkr h428 E Lodi av  
Carter Ella M (wid Edw) h404 W Walnut  
" Ernest L (Vieva) well driller h213 E Oak  
" J L mgr Stockton Box Co  
" Jacques W (Eleanore) slsmn h316 W Oak  
" Robt L r104 N Sacramento  
Cary Chas (Pauline) r228½ N Washn  
" Eza (Edith) h228½ N Washn  
" Fred G (Blanche) bldg contr 4 S Cordier  
" Vern (Matilda) h228 N Washn  
Castagna Jos (Kath) h430 Louie av  
Castro Nicholas J auto mech Perrin's r115 N School  
Catcart Lee r405 E Walnut  
" Wm (Maude) h405 E Walnut  
Caufield Jacob S (Nellie) formn Super Mold Corp  
" Jas (Anna) cannery wkr h405 Eden  
Caviness Beatrice waiter John Kestin r538 Harold  
" Wm L barber C E Stemler r538 Harold  
Cecchetti Dora r300 E Lodi av  
" Duile (wid Ettore) h300 E Lodi av  
Cellini Al winery wkr r112 N School  
" Arch A (Muriel) h218 N Cordier  
" Chas (Iona) h304 Flora  
" M A r304 Flora  
Cencirulo Bert meat ctr A T Kelm r rt 1 bx 342  
Central Apartments Mrs Livonia Williams mgr 322 E Pine  
" California Traction Co C W George frt agt 11 E Lodi av  
Chambers John F clk Mrs S E Madison h513 E Walnut  
Chan Edw meat ctr Fong & Chin r514½ E Elm  
" Lok (Palace Meat Mkt) r21½ S Sacramento

## For 80 Years BREUNER'S

HAVE BEEN HEADQUARTERS FOR HOME FURNISHINGS

Main St. at Hunter

Stockton

Telephone 6800

# PEIRANO BROS. & CO.

22 S. Sutter Street, Phone 432

Stockton, California

LODI CITY DIRECTORY (1937)

547

CHAN  
 " & Kong Herb Co 207 W Oak  
 Chaney Esther B (wid Horace) h233 S Lee av  
 Channell C Malcolm ice cream mkr r343 E Pine  
 " Ellenor asst librn Lodi Public Library r343 E Pine  
 " M Robt (Nora) firemn h343 E Pine  
 " Nora Mrs clo prsr R S Mills r343 E Pine  
 Chapdelain Louis Odille) rancher h708 W Elm  
 Chapman Frances Mrs r323 W Oak  
 " Minnie C (wid Albt) h345 E Walnut  
 " Thos W (Florence) asst supt County Schs h224 Crescent av  
 Chappell Vincent D dairy 45 N Sacramento r Eucalo Grove  
 Chappius Geo P formn Super Mold Corp r rt 1 bx 415  
 Chappuis Alex J (Lydia) mach h209 Hilborn  
 " Peter F (Martha) h16 N Garfield  
 Chase Jeannie (wid J C) r130 Crescent av  
 Chatfield Chas J (Velma) restr 301 E Pine  
 Cheatham Cecil (Elenor) lab h230 N Stockton  
 " Robt R r230 N Stockton  
 Cheney Andw lab r302 Acacia  
 " Melvin lab r302 Acacia  
 Chew Henry (New China Cafe) r Stockton  
 Chin Wm (Fong & Chin) r514½ E Elm  
 Chism Edna B r rear 537 E Pine  
 " Grady E r rear 537 E Pine  
 " Jas E (Clara) h rear 537 E Pine  
 Chiugoku Co Isao Okazaki mgr gro 24 S Main  
 " Hotel Isao Okazaki mgr 22 S Main  
 Chotros Neck lab h513 S Stockton  
 Christenson H r14½ S School  
 Christesen Fernando (Ida E) farmer h247 S Lee av  
 Christian Science Reading Room 18 N Lee av  
 Christner Jos D (Lyda) h228 N Garfield  
 " Verlo r228 N Garfield  
 Christy F slsmn J H Rice r Woodbridge  
 Church Clyde C (Emma) (Lodi News-Sentinel) h211 Chestnut  
 " Emma Mrs social editor Lodi News-Sentinel r211 Chestnut  
 " of God 501 S Washn  
 " of the Nazarene 444 Hilborn  
 Churchman Dewitt C carp h520 E Locust  
 " Mary E (wid Benj C) h417 N Church  
 CITY DIRECTORY, R L Polk & Co Publishers, 604 Mission, San Francisco, Tel Garfield 5431  
 " Drug Store (J K Bybee A C Osler) 100 W Pine  
 CITY HALL—221 W Pine cor Pleasant  
 " Improvement Building 106 W Oak

CITY TRANSFER CO (Cecil R and W L Irey) Contract Local and Long Distance Hauling, 104 N School, 212 Farmers & Merchants Bank Bldg, Tel 39  
 Clancy Cecil B fieldmn Am Fruit Growers h245 S Lee av  
 " Maude E Mrs (Lodi Steam Laundry) r615 W Locust  
 " Maurice E (Maude E) (Lodi Steam Laundry) h615 W Locust  
 Clark Althea tchr r118 W Oak  
 " Cath tchr Emerson Sch r118 W Oak  
 " Cora E (wid W L) r315 E Pine  
 " Ezra E farmer h517 E Walnut  
 " Geo wine wkr Community Grape Corp  
 CLARK HARVEY S, City Councilman, Printer, 117 N Sacramento, h317 E Pine  
 " Perry O mgr Lodi Fruit Growers Assn P O bx 123  
 Clarotto Fedelo r104 E Lodi av  
 Classen Louis W (Alice) clk h309 W Pine  
 Cline John M (Mabel G) h207 N Church  
 " Russell I (Dorothy) core mkr h629 N Sacramento  
 Clinkingbeard Bertha M lab Shewan-Jones r9 N Cordier  
 Closson Archie N (Mary) blksmtr 112 E Pine h519 N School  
 Coates Robt r611 S Central av  
 Coberly Chas W (Edna A) carp h334 Poplar  
 " Robt B (Olive A) h541 Maple  
 Cochran Eva (wid J D) h110½ N Washn  
 Coddington David O (Leona I) carp h1238 S Central  
 " David S mech r1238 S Central  
 Coe Arth J (Cora B) gas sta 101 N School h413 E Pine  
 " Arth J jr (Fay B) slsmn Perrins h121 Olive ct  
 " Fay Indy wkr Lodi Steam Indy r121 Olive ct  
 " Geo F radiomn Emery & Brown r328 E Locust  
 " Herbt (Laura) carp h328 E Locust  
 " Raymond S r413 E Pine  
 " Warren (Jean) gas sta 50 S Sacramento h713½ W Elm  
 Coey Clarence V (May) shoes 16 S School h205 Olive ct  
 Coffey Theresa hskpr 117 S Church  
 Coffield Wm J (Faith) dentist 4½ N School R 3 h26 Crescent av  
 Coffman Chester W farmer r118 E Oak  
 " E Walter (Atlanta) h118 E Oak  
 " Jess clk r118 E Oak  
 Coker Redmond E (Ruth) slsmn h709 N Church



HIGHWAY GARAGE  
 Phones 566-567

Tracy, California



720 N. EL DORADO ST.  
 Phones 801-802

Stockton, California



# AL P. LABRUCHERIE

Telephone 3649

Chas. C. Roe  
Owner

1930 Linden Road

# ROE WELDERS

Manufacturers of  
A-C and D-C ARC  
WELDING  
EQUIPMENT

Stockton, California

548

(1937) R. L. POLK & CO'S

Cole Bert S (Ellen) h925 S Stockton  
" John S r925 S Stockton  
" Robt B (Ina) surveyor h300 W Oak  
" Robt R (Mamie I) confy 17 S School h300 W Oak  
" Wm E (Thirza M) (Mason's Hospital) h209 N School  
Coleman Hannibal B h719 N School  
Collier Wm h325 Forrest av  
Collins Eug C (Lilly M) barber 116 N Cherokee la h740 1/2 S Central av  
" Lillian r740 1/2 S Central av  
" Loren R (Pearl F) h1001 S Stockton  
" Thos bartndr Edgar Wilkinson r5 1/2 S Sacramento  
Collivas Elaine T sten F A Dougherty & Son r224 Olive ct  
" Gus (Margt) barber h224 Olive ct  
Colvin Jas S (Iris) music tchr h400 1/2 S Sacramento  
" Richd H (Grace E) carrier P O h225 Crescent av  
Comartin Jess J (Olive) h216 S Church  
" Wm J (Lena) h107 W Lockeford  
Combs Abigail C (wid Robt) h300 W Walnut  
" Marshall W (Lois) h316 Chestnut  
Community Grape Corp W A Spooner mgr N Sacramento cor Woodbridge rd  
" Welfare Council Mrs Cora Raines in chge 221 W Pine  
Condon Clyde (Trycilda) lab h219 N Washn  
" Dorothy r219 N Washn  
" Oliver (Agnes) lab h237 Redwood  
Cone Esther L sten Super Mold Corp r1003 S Cherokee la  
" Helen R gift shop 4 N School r1003 S Cherokee la  
" Louise D (wid W E) (Haven Auto Court) h1003 S Cherokee la  
Conklin J tchr Lodi Union High Sch r Acampo  
Conley Bill bartndr r39 S Sacramento  
" Jas M adv mgr Super Mold Corp r4 W Pine  
Conrad Clara J Mrs used furn 18 W Elm  
" Fredk (Clara J) h18 W Elm  
Cook Abijah J (Mary E) exp 18 W Elm h403 W Elm  
" Frances (wid Amos) r615 W Locust  
" Genevieve music tchr 224 S Pleasant av  
" John L (Anna) lab h308 Maple  
" Leland A (Erna) mgr Lodi Steam Lndy h414 Forrest av  
" Lucy L bkpr Ed Spiekerman r Stockton  
Coomes Frieda S Mrs beauty shop 108 W Pine h119 W Elm  
Coon Willard J (Agnes) lab h11 S Washn  
Cooper A Belle (wid Wm) r609 N School  
" Alberta Mrs emp Shewan-Jones h18 1/2 W Elm  
" Chas D (Iverneen) h425 E Oak  
**COOPER FORREST E (Dora C) City Poundmaster, h222 Hilborn**  
" J Calvin (Clara) electn h602 N Church  
" Jacquelyn cash Lodi Theatre r Acampo  
" Louise F r222 Hilborn  
" Lulu J (wid Edw) r602 N Church  
Cordis Otho E msngr Western Union Teleg Co r532 E Walnut

Cordway Frank H barber h108 S Stockton  
Core Arlie C (Emma) slsmn h500 Eden  
" Lusetta (wid Wm) r500 Eden  
Cormack Thos (Eliz) tchr Needham Sch h214 N Cordier  
Cornell Mary E (wid R T) h412 Flora  
Correl Oscar tmstr r211 W Pine  
Cerson Aug G (May L) h109 S School  
Cory Building 4 1/2 N School  
Cosmopolitan Hotel (Carlo Pallavicini Marie De Martini) 100 S Main  
Cossins Ben T restr 118 N Cherokee la  
" Geo lab r224 N Central av  
" H Ray clk B T Cossins r224 N Central av  
" Lon (Daisy) lab h224 N Central av  
" Roy lab r224 N Central av  
Costa Angelus L (Pebble) rancher h625 W Lockeford  
" Cath R h605 W Lockeford  
" Louis (Laura) h219 N Washn  
Costanza Nick r104 E Lodi av  
Coltherman Frank eng r14 1/2 S School  
Cottel Fredk slsmn r220 S Lee av  
Cotton Hazel tchr r245 S Pleasant av  
Countryman Bertram W (Alice) h324 Eden  
" Fredk N (Ann) h111 W Walnut  
Courtney Beverly auto pntr r611 S Central av  
" Kenneth lab r611 S Central av  
Cowling Earl S gro 19 N School r7 S School  
Cozy Rooms Mrs Dorothy Franklin mgr 119 1/2 N Sacramento  
Craddock Jessie (wid J C) h rear 428 E Lodi av  
Craig Andw J (Nellie M) h224 W Daisy av  
" Nellie M Mrs mgr Lodi Rating Bureau r224 W Daisy av  
Cramer Harold driver r301 E Locust  
Crandall Earle P (Madely) tchr Lodi Union High Sch h614 W Locust  
Crane Lillie A (wid C P) r409 E Locust  
Cratty Della r1014 S Central  
" Harry h1014 S Central av  
Crawford Clyde r325 W Daisy av  
Crescendi Jas r115 W Oak  
Crete Ellis (Laverne) clk Lodi Drug Co r205 S Church  
" Marjorie r411 W Oak  
" Melba tchr Emerson Sch r411 W Oak  
" Michl E (Leta) mgr Lodi Drug Co h411 W Oak  
" Wm R clk Lodi Drug Co r411 W Oak  
Crispi Antonio h306 N Pleasant av  
Cromwell Loren (Elda) mgr Mebius & Drescher Co h701 S Cherokee la  
Crosby Clarence A (Emma) slsmn h606 N School  
" Fredk P (Beatrice) shop formn P W Loewen h324 E Oak  
" Raymond F pntr h321 E Lodi av  
" Raymond M (Orphic) pntr h216 W Daisy av  
Crose A Eliz (wid Jos) h rear 12 N Rose  
" Ira N (Florence) tchr Lodi Union High Sch h12 N Rose  
Cross Leroy B (Lotta) mech h225 S Church  
Croswhite Wm H optom 3 S School r Acampo  
Crowe Francis J (Matilda) h122 N Cherokee la  
Crowell Lloyd dairy wkr h322 E Pine  
" Susan (wid Chas) r322 E Pine

# NORTHWESTERN MUTUAL FIRE ASSOCIATION NORTHWEST CASUALTY COMPANY

No Better Insurance Protection Obtainable, and at a Saving

**COMPLETE SERVICE — REPRESENTATIVES THROUGHOUT CALIFORNIA**

**District Headquarters: 202 Bank of America Building, Stockton Telephone 281**

Crown Harold waiter r501 E Lodi av  
Cunningham Emma I (wid Albt) h346 E Pine  
Currier Velma Mrs nurse Mason's Hospital  
r409 E Pine  
Curry Thos T (Mabel) rancher h611 E Pine  
Curtis Melvin E (Jennie) h306 Poplar  
" Walter N mech L F Grimsley Inc r Stockton  
Cusamano Frank clk Turner Hdw & Implt Co  
Custer Rolla J pres Industrial Finance Co  
r rt 1 bx 430  
Dais Lillian r220 E Lodi av  
Dalander Eva tchr Lodi Union High Sch r216  
W Elm  
Dal Porto Emil (Louise) mach h315 E Walnut  
Daly John r441 Eden  
" Patk H (Helen) h441 Eden  
Dames Harold H (Alvina) formn PG&E Co  
h520 Eden  
" Henry F r520 Eden  
Danalinko Eleanor clk Spiros Stathatos r118  
W Elm  
Danelenko Fred (Emma) clk r317 Maple  
Daniels Chas r213 S Church  
" Eileen r213 S Church  
" K Weller h213 S Church  
Darden Edwin F (Eliz) (Darden & Patterson)  
h16 W Walnut  
" Louis W (Constance) asst sls mgr Super  
Mold Corp h619 W Pine  
" & Patterson (E F Darden H C Patterson)  
gas sta 301 S Sacramento  
Da Rosa Edw r112 N School  
" Jos r112 N School  
Darrah Bessie Mrs r323 W Elm  
Dart Evelyn M Mrs 2d hd clo 107 N Sacramento  
" Joaquin (Evelyn M) clk Mrs E M Dart h107  
N Sacramento  
Dause Abr (Violet) fruitwkr h424 Eden  
" Adaline maid 820 S Central av  
" Fred fruitwkr r424 Eden  
" Henry fruitwkr r424 Eden  
" Rudolph (Minnie) carp h424 Eden  
Davies Dodd r313 W Walnut  
" Nate r313 W Walnut  
Davis David W (Wanda M) (Davis & Brun-  
ner) h344 E Elm  
**DAVIS J HAMILTON (Zoe) City Treasurer  
and Tax Collector, h216 W Locust**  
" Laura A h25 De Force av  
" Maud H tchr Lodi Union High Sch r404 W  
Walnut  
" Mildred r729 N Pleasant av  
" Sylvester (Anna) wchmn h309 W Pine  
" Wm R (Anna) h206½ Flora  
" & Brunner (D W Davis B H Brunner) auto  
wreckers 220 S Cherokee la

Dawson Louis F h114 E Oak  
" Ross swchmn h211 N Garfield  
Day Grant (Irma) h729 N Pleasant av  
" Leonard G r729 N Pleasant av  
" Ray (The Pump Shop) r St Helena  
Dean Danl M (Rachel) tailor and clo clnr 7  
W Pine h212 Crescent av  
Dearboam John (Kath) lab h rear 314 W  
Lockeford  
De Benedetti Louis (Adele) mgr Fior D'Italia  
Hotel h222 W Lockeford  
Debrick Jas F r518 N Church  
" Margt C (wid John) h518 N Church  
Decker Ida F (wid C H) h rear 405 E Lodi av  
" Robt D (Tillie) well driller h512 Tokay  
Declusin Felix A (Marie N) tmstr h314 W  
Lockeford  
" John L (Ruth) gro 19 W Pine h211 W Elm  
" Marjorie sten r211 W Elm  
Deese Reecy J (Ovelle) h27 N Church  
Delander Eve tchr r322½ W Walnut  
Delegeanes Geo barber 113½ N Sacramento  
Del Grande John r425 W Lockeford  
Delk E A auto mech P W Loewen r218 S  
School  
Del Rey Rooms Jake Korus mgr 14½ S School  
Delt Irving (Lydia) auto mech h218 S School  
De Martini Alf r437 E Locust  
" Fred r437 E Locust  
" Marie (wid Ernest) (Cosmopolitan Hotel)  
h100 S Main  
" Paul rancher h437 E Locust  
Deming Henry M lab r425 Vine  
" Kath (wid Geo) h420 Vine  
" Marie r425 Vine  
" Ruth r425 Vine  
Denehy J E tchr Lodi Academy r1315 S Gar-  
field  
Denevi Mary (wid Caesar) h626 W Lockeford  
Denich Ralph h504 Hilborn  
De Pauli Alf appr prsmn Lodi News-Sentinel  
r rt 3 bx 162  
" Ray bartndr Herbt Reimcke  
Derksen Wm J (Frieda) poultrymn h505 Maple  
De Soldato Paulino lab r222 W Lockeford  
Deutscher Edw (Thelma) h220 Maple  
" Geo G (Marie) h529 E Walnut  
Devaney Geo (Mary) (Hepper & Devaney)  
h412 S School  
De Vela Aurora Mrs beauty shop 18 S School  
r7 do  
Devine Anna tchr Lodi Union High Sch h433  
W Pine  
" Anna (wid John T) r433 W Pine  
" Arth porter E R Filler  
" H chauf r14½ S School  
" John E (Margt) fieldmn Amer Fruit Grow-  
ers h416 W Locust

## STOCKTON DRY GOODS CO.

Stockton's Largest Department Store

42 STORES UNDER ONE ROOF

Corner Main and American

Telephone 5030

P. O. Box  
188

GENERAL SHEET METAL WORK

**CAPPS BROS.**

Tel.  
2441

MANUFACTURERS OF

**HARVESTER PARTS — SPECIAL EQUIPMENT**

822 East Church St.

Stockton

550

(1937) R. L. POLK & CO'S

De Weber Jas L (Isabelle R) h19 W Lodi av  
**DIAMOND MATCH CO THE, P O Young Mgr.**  
Lumber and Building Materials, 224 N  
Main cor Lockeford, Tel 624

Dick Anna r424 Railroad av  
" John N (Charlotte) h424 Railroad av  
" Mary r424 Railroad av  
Dickhoff Gotthoff R (Adeline) carp h303 Tokay  
Dickinson Geo N slsmn Julius Horning r  
Stockton

Dickoff Angelo (Martha) gro 27 W Elm h220 do  
Diehl Harold C (Aline H) jan P O r rt 3 bx 151  
Diekmann Herman tchr Lodi Union High Sch  
r rt 1 bx 21

Dietderich Chester S auto repr 813 S Cherokee  
la

Dietrich Frank P sec Enterprise Planing Mill  
h420 E Elm

" John r420 E Elm

Dietz Conrad J (Christine) plmbr 119 N Sacra-  
mento h200 Hilborn

" Jacqueline waiter John Kestin r15 S Stock-  
ton

" John P (Olga) chauf h210 N Washn

" Jos W (Jacqueline) meats 15 W Oak h15 S  
Stockton

" Kolrine r15 S Stockton

" Mathilda Indwkr Service Lndy r505 S  
Washn

" Otto (Bertha) h520 S School

" Tillie (wid Frank) h505 S Washn

Dietze Carl N (Florence) plmbr h212 Hilborn

Dillon David J (Blanche) h413 W Walnut

Dimitroff John (Vera) orchardist h224 Vine

Din Lee Indy 121 E Oak

**DIRECTORY LIBRARY, Maintained by R L**  
Polk & Co for Free Use of Public at Lodi  
Public Library, 305 W Pine

Dishman Saml R mgr Shell Oil Co

Dixon Alvin (Anna) patrolmn h432 E Pine

" Lester W (Arlene W) chauf h616 N School

Dobertstein Alvina (wid Gust) h719 S Washn

Dobrasin Ned (Adelia) cook h114 N Church

Dobrovolny Frank (Christina) h420 E Pine

" Herbt r420 E Pine

Dockter Herbt (Viola) meat ctr Pure Sausage  
h518 N Church

" Philip lab h513 Flora

" Viola Mrs clk F W Woolworth Co r518 N  
Church

Doctor Fred (Lydia) lab h rear 524 Flora

Dodds Helen r15 W Lodi av

Dodge Henry L (Harriet W) eng Shewan-  
Jones h130 N Cordier

Doering Marie (wid Gottlieb) h301 W Walnut

Dolin Andw lab h rear 225 Redwood

Dollenger Gottlieb (Mary) rancher h404 S  
Central av

Dominican Sisters (St Anne's Academy) 201  
S Church

Donadio Thos farmer h523 S School

Doneux Jos (Sue) lab h323 E Locust

Dorf Frank E r115 Forrest av

Dorheim Alma r412½ E Lodi av

" John (Amelia) h412½ E Lodi av

Dorilio Danl A (Alice) lab h240 Hilborn  
Dornan Ellen Mrs clk r504 N Pleasant av  
Dotson Jos (Margt E) plstr h115 W Lodi av  
Doty Chas (Kathryn) lab h718 S Washn  
" Chas jr lab r718 S Washn  
" Donald h332 E Walnut  
" John C (Mary) lab Shewan-Jones r332 E  
Walnut

" Lloyd r718 S Washn  
Dougherty Bert C (Leola) h115 N Cordier

" F A & Son (F A and F A jr) ins 1 S School

" Fredk A (Gertrude L) (F A Dougherty &  
Son) h21 W Locust

" Fredk A jr (F A Dougherty & Son) r21 W  
Locust

Douglass Robt I lab h317 Maple

Douthard Geo car washer Warren Coe r8 S  
Main

Dow Hugh A tchr Lodi Union High Sch r rt 2  
bx 28

Doyle Robt E (Margt L) sports editor Lodi  
News-Sentinel h rear 114 W Locust

Dragoo Howard L (Frances) linemn PG&E Co  
h508 S Central av

Draper John carp r9 W Oak

Drawert Otto (Magdalene) lab h428 Tokay

Dreher Carrie (wid Louis) h316 N Sacra-  
mento

Dryb Walter (Marion) tchr h331 Acacia

Ducharme Geo H (Annette M) tmstr h3 W  
Lockeford

Duckworth Clyde F (Esther) teller Bank of  
Am h730 S Central av

Duerksen Gerhard T (Justina) trackmn h529  
Flora

Duffloth Ruth maid 416 W Locust

Dugdale Wm M chauf r428 S School

Duguid Jas r21 N Washn

" Lydia A (wid A M) h21 N Washn

Dukes Esther M tchr Lodi Academy r1051 S  
Central av

Duncan Geo W (Janet) mach h219 S Cordier

" Jos A (Gladys) auto mech C C Perrin h208  
S Central av

" Lawrence (Myrna) embalmer Wells Funeral  
Home h123 N School

Dunlap Lola Mrs h417 W Lockeford

Duan Mattie B (wid L G) h401 N School

Dunton Chas H jr (Pearl) mach h307 Acacia

Durfey Martin O (Ruth) welder h301 W Oak

Durkee Thos bartndr Edgar Wilkinson h5½  
S Sacramento

Dutschke Albt L (Eliz) plmbr h215 E Walnut

Dutton Belle (wid R M) h903 S Central av

" Irena Tent No 37 Daughters of Union Vet-  
erans 23 W Pine

Dyer Danl M (Mary) collr PG&E Co h527 E  
Lodi av

" Danl M jr (Ella C) diemkr h405 E Locust

" Geo lab h rear 505 S Stockton

" Martha L (wid C W) h316 E Locust

Eagles Hall 201 N Sacramento

Earl Fruit Co E A Humphrey mgr 17 E Elm

Earle Rooms R W Lytle mgr 17½ W Pine

Eaton Alf M court reporter r226 N School

" Edgar J (Nellie L) h226 N School



# F. J. DIETRICH & CO.

INSURANCE

235 E. WEBER AVE., STOCKTON

APPRAISALS

LODI CITY DIRECTORY (1937)

551

Eberhardt Jacob K lab r212 Redwood  
 " Jacob T lab r212 Redwood  
 " John lab h212 Redwood  
 Eddlemon Ambus O real est 2 W Pine  
 " Ambus O jr asst plant mgr Shewan-Jones  
 r Acampo  
 Edinger Fred (Emma) lab h519 Maple  
 Egan Chas C (Helen) h647 E Pine  
 Egbert Delance E (Emma) ticket agt h614  
 N Church  
 Ehlers Clara Mrs r321 E Elm  
 " Ella clk r337 W Daisy av  
 " Fred J (Lena) h337 W Daisy av  
 " Frieda r337 W Daisy av  
 " Geo r337 W Daisy av  
 " Henry A (Clara) Indywkr Service Lndy  
 r321½ E Elm  
 " John (Bertha) h406 W Daisy av  
 " Walter (Dorothy) winery wkr h220 1st  
 Ehly Henry (Leah) lab h428 Cherry dr  
 " Henry J r428 Cherry dr  
 Ehnis Arth (Louise) gas sta atdt J J Meidinger  
 h505 S Central av  
 Ehrhardt Laurel (Martha) r rear 422 W Pine  
 Ehrhart Edwin r801 S Washn  
 " Ezra r801 S Washn  
 " Herbt r801 S Washn  
 " Saml (Eliz) lab h801 S Washn  
 Ehrlich Beatrice J r537 Flora  
 " Harold r428 Concord  
 " Henry H (Selma) lab h537 Flora  
 " Roy H (Mamie) lab h415 Tokay  
 " Saml (Rachel) lab h428 Concord  
 Eibel Lydia Mrs h435 Cherry dr  
 Eisele Danl mech Krieger Motor Co  
 " Ferdinand (Christiana) lab h433 Cherry dr  
 " Ruth Mrs r241 S Hutchins  
 Eiseman Adam C jr (Mary) barber 611 S Central  
 av h411 Eden  
 " Esther r533 E Pine  
 Eisenbeis Adolph (Juanita) slsmn P W Loewen  
 h525 E Walnut  
 " Christ D (Lydia) metalwkr h232 Hilborn  
 " Fred D (Amelia) h104 S Washn  
 " Julia Mrs h417 Eden  
 Eisler Mabel E (wid E E) h321 E Pine  
 Ekness E E h222 E Pine  
 Ekwortzell Henry W (Constance) gro 720 N  
 Church h120 Louie av

**ELECTRIC EQUIPMENT CO (W I Rice, O H Linde)** Genuine Frigidaires, Philco Radios, Sales and Service, Easy Washing Machines, Electric Ranges, Sterling Pumps and Turbines, Pressure Systems, Electrical Installations and Service, 8 W Pine, Tel 160

Elithorp Theo r530 W Daisy av  
 " Wm J (Alice) rancher h530 W Daisy av

Elliget Wm H (Nettie) mgr Postal Teleg-Cable  
 Co h12 S Church  
 Elliott Lester H (Sadie M) lbr 200 E Elm h20  
 N Stockton  
 Ellis Henry F h207 W Elm  
 Ellwein Robt A (Loretta) dept store 14-18 N  
 School h516 E Elm  
 Emanuel Evangelical Lutheran Church Rev W  
 R Kranberger pastor 399 S Central av  
 Emerson School 43 N Hutchins  
 Emery Edwin D (Ruth) h216 N Church  
 " Wallace H (Emery & Brown)  
 " & Brown (W H Emery C E Brown Thos  
 Killelea) electns 105 S School  
 Empfel Jack bartndr Milano Hotel r8 S Main  
 Engel John h412 E Oak  
 " John J jr (Minnie) h412 E Oak  
 Enterprise Planing Mill A H Perry pres F P  
 Dietrich sec Emil Klapstein treas 635 N  
 Sacramento  
 Enzminger Regina (wid Adam) h417 E Elm  
 " Rosa (wid Gottlieb) h513 E Locust  
 Eproson Evelyn bkpr Turner Hdw & Implt Co  
 " Forest (Lalla) lab h9 N Hutchins  
 Erdahl G N bkpr Union Ice Co r7 S School  
 Erlich Carrie Mrs tchr Lodi Union High Sch  
 r223 W Locust  
 " Wm H r223 W Locust  
 " Wm J (Carrie) farmer h223 W Locust  
 Erickson Emil (Esther) lab h214 Eden  
 " Ira F (Harriet) carp h525 S Stockton  
 " Irwin (Mary) carp h222 E Pine  
 " Margt (wid J A) r321 E Pine  
 " Raymond clk M R Putnam r525 S Stockton  
 " Sarah (wid Eric) h717 S Washn  
 Erlbeck Ernest (Irene) clk h530 S School  
 Erlenbush Jacob (Nettie) mech h802 S Central  
 Eskildsen Adah maid 131 Crescent av  
 " Miriam r319 W Oak  
 " Rhoda maid 304 Chestnut  
 Esotoo Fumigation Co Ltd 401 S Main  
 Espinosa Cip (Mary) h630 W Lodi av  
 Estes Barbara waiter John Kestin r320 Tokay  
 Euzlinger John (Helena) h536 Flora  
 Eubanks Norvel J (Cath) swchmn h8 S Hutchins  
 Europa Hotel Wm Taioli mgr 18 S Main  
 Evans John C (Marian) h335 Eden  
 Fachner Arth photo engr Lodi News-Sentinel  
 r216 Flora  
 " Fred (Amelia) h216 Flora  
 Fahrner Olga Mrs h400 S Sacramento  
 " Viola nurse r400 S Sacramento  
 Fallenger Alf (Patsie) lab h739 S Washn

**FARMERS & MERCHANTS BANK, J B Gundert Pres, C A Wishek Cashier, 29 W Elm, Tel 161**  
 " & Merchants Bank Building 104 S School

## INGALLS RADIO SERVICE & LABORATORY

(A Member of Radio Manufacturers Service)

Authorized Philco, R. C. A., General Electric and Zenith Service

COMPLETE RADIO SERVICE

1249 South San Joaquin St., Stockton

Telephone 10031

# CHARLES TRAVEL SERVICE

STEAMSHIP - RAILROAD - AIRPLANE - ZEPPELIN - MOTOR BUS  
HOTEL - RESORT RESERVATIONS TOURS - CRUISES

17 South San Joaquin St., Stockton

Phone 5121

552

(1937) R. L. POLK & CO'S

Farnell Frances bkpr r16 W Lockeford  
" Herbt lab h16 W Lockeford  
Fausnaugh Jas R (Bertha) h601 S Stockton  
Feaver Ethel nurse r216 W Elm  
Fechner Emanuel (Bertha) carp h320 N Church  
Feikort Kath (wid Gottlieb) h714 S Central av  
Feliz Jacinto farmer h435 Louie av  
Felton Alice T Mrs clk M Newfield & Sons r310 W Oak  
" Chas (Alice T) clk h310 W Oak  
" Nicholas (Amelia) (Pure Sausage & Meat Co) (Tokay Meat Market) h422 Tokay  
Fena Eva A waiter H M Walter r304 W Lodi av  
" Renaldo (Theresa) h304 W Lodi av  
Ferdun Ernest (Marguerite) farmer h429 S School  
" Lillian (wid Chas) h401 W Oak  
" Saml R (Margt) rancher h317 W Walnut  
Ferguson J Chas (Philoma) dep sheriff h3 Crescent av  
" Nancy T (wid R E) h600 W Elm  
" Robt E jr r600 W Elm  
Ferrero Bernard (Mary) mgr Piemonte Hotel h108 E Lodi av  
" Frank (Antoinette) barber 22 S Main and mgr Milano Hotel h119 S Stockton  
Festich Sam pipe lyr r403 S Sacramento  
Feuller Jacob (Lydia) h945 S Stockton  
Fiel Jacob (Martha) pntr h241 Tokay  
Field Alice r20 W Lodi av  
" Glenn r414½ Railroad av  
" Howard (Jewel) lab h rear 321 Poplar  
" John F (Lucy) lab h414½ Railroad av  
" John T (Amanda) rancher h20 W Lodi av  
" Lucille Mrs r109 S Church  
" Marjorie r20 W Lodi av  
" Marshall (Amy) lab h414 Railroad av  
" Wilbur T mach (Hannah) h312 Maple  
" Wm C reprmn r20 W Lodi av  
Fields. Straud (Myrtle) h400 W Lockeford  
Figueroa Florencio F vineyardist h703 N Pleasant av  
Filbin Jos (Ruby G) slsmn h550 E Locust  
Filler Edwin R liquors 21 N Sacramento h351 E Lodi av  
" Ella Mrs h209 Eden  
" Ernest r351 E Lodi av  
" Eug clk Purity Stores r428 Flora  
" Geo r112 N Sacramento  
" Loren r351 E Lodi av  
" Merriett r209 Eden  
" Ruben r112 N Sacramento  
Fillner Roy (Clara) carp h720 S Washn  
" Russell r720 S Washn  
Fink Cleaners (H J Fink C A Boynton) 112 W Pine

## FINK

" David jr cement wkr Ed Spiekerman r341 Flora  
" Emil fldmnn S A Gerrard Co r244 Eden  
" Ernst H (Emma) h219 S Rose  
" Esther (wid C H) h518 E Oak  
" Gustav H (Minna) gro 354 E Oak h341 E Lodi av  
" Henry (Caroline) h244 Eden  
" Herman J (Ottilie) (Fink Cleaners) h125 S Rose  
" John J (Clara) mens clo 14 W Pine h123 S Rose  
" Winifred r123 S Rose  
Finley Fred P (Loris G) h226½ N School  
Fior D'Italia Hotel Louis De Benedetti mgr 222 W Lockeford  
Fiori Virgil (Georgie) h528½ E Locust  
First Christian Church Rev Primus Bennett pastor 237 S School  
" Church of Christ Scientist 322 W Elm  
" Congregational Church Rev A R Boone pastor 217 N School  
" German Baptist Church Rev G E Lohr pastor 351 E Oak  
" Methodist Episcopal Church Rev V C Brown pastor 200 W Oak  
" Pentecostal Church Rev W R Pair pastor 300 Hilborn  
Fischer Emil lab r606 S Central av  
" Fred (Pauline) slsmn h536 Tokay  
" John (Martha) h210 N Garfield  
" Karl (Christina) confy 606 S Central av  
" Walter K (Edna) lab h rear 421 Hilborn  
Fisher Chas R (Gwendolyn E) guard h21 W Locust  
" Henry (Margt) h707 S Stockton  
Flaig Jos J (Eliz) winerywkr h524 Hilborn  
Fletcher Harold W (Bernice) carp h101 De Force av  
" John V (Amanda J) h1215 S Central  
" Orlo J appr printer H J Tolliver r524 Harold  
" Orvell K r524 Harold  
" Wm H (Alice) ranchwkr h524 Harold  
Flint Frank T (Minette) slsmn h209 S Rose  
Flockhart Louis (Margt) (Flockhart & Riggs) r Clements  
" Louis (Marguerite E) sand dlr 600 N School  
" & Riggs (Louis Flockhart R R Riggs) sand and gravel 615 N Sacramento  
Flora Jos lab r322 N Sacramento  
" Rebecca Lodge No 162 IOOF 109 N Sacramento  
Floyd Carol L asst sec Chamber of Commerce r110 N Pleasant av  
" Dorothy T Mrs asst librnn Lodi Public Library r119 N Pleasant av  
" Henrietta (wid Hamline) h110 S Pleasant av



## TYPISTS!

See and Try the New ROYAL TYPEWRITER in Your Own Office

Also See and Compare All Makes of Portable Typewriters at

## STANDARD OFFICE EQUIPMENT CO.

340 E. Weber Ave. Stockton

Phone 567

# ELECTROLUX INC.

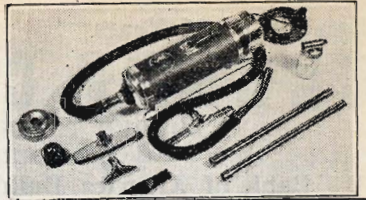
## CLEANER AND AIR PURIFIER

106 DIFFERENT USES IN HOME

Telephone 2219

110 N. San Joaquin St.

501 Belding Building



LODI CITY DIRECTORY (1937)

553

### FLOYD

" Maurice H (Dorothy) rancher h119 N Pleasant av  
Flying A Waffle Shop (Mrs Martha Volzke) 200 W Pine  
Focacci Chas F (Rose) rancher h421 N Pleasant av  
" Marie (wid John) h429 W Lockeford  
" Rose bkpr Lodi Drug Co r421 N Pleasant av  
Folse Munson P (Lorraine) meats 10 N School h612 W Elm  
Fong Henry (Fong & Chin) r514½ E Elm  
" & Chin (Henry Fong & Wm Chin) meats 201 W Pine  
Fontaine Napoleon (Vitaline) h417 Flora  
Foote Chas (Ruby) eng h412 Hilborn  
Forbes Elmer D (Mary) mech h114 S Stockton  
" Grace r424 Flora  
" Helen r424 Flora  
" Wesley E (Clara) h424 Flora  
" Worley (Carrie) h208 N Stockton  
Fore Millard L constable 210 N Sacramento r rt 2 bx 400  
" Noble D auto repr 216 N School  
" Rose Mrs slswn Lodi Dry Goods Co r rt 2 bx 157  
Forest Herbt r118 E Oak  
Forman Aaron clk Max Sweet r617 S Central av  
Forrest Anna M (wid Edwin) h421 Hilborn  
Foster Harry E ydmn Valley Lumber Co of Lodi r19 W Lodi av  
" J G h322 E Pine  
" Joan r8 N Rose  
" Wm H (Foster & Wood Canning Co) r Woodbridge  
" & Wood Canning Co (W H Foster D W Wood) 30 Tokay  
Fountain Ralph J (Mildred) (The Fountain) h9 S Cordier  
" Ralpa r9 S Cordier  
" Robt F r9 S Cordier  
**FOUNTAIN THE (Ralph J Fountain) Confectioners, Ice Cream, Fountain Lunch, 23 W Pine, Tel 628-W**  
Fowler Bessie B (wid Warren) r700 W Elm  
" Mary r526 W Daisy av  
" R Madison (Mattie L) h526 W Daisy ov  
Francisconi Antonio lab r420 E Locust  
Frandsen Chas T (Minnie) blksmith 17 E Lockeford h541 E Walnut  
Frangotis Peter G shoe repr 106 S School r Acampo  
Frank Bertha r341 N Stockton  
" David shoe repr Jos Frank r224 Rush av  
" Hugh r341 N Stockton  
" John (Amelia) carp h341 N Stockton

### FRANK

" Jos (Rachel) shoe repr 33 N Sacramento h224 Rush av  
Frankhouse Alvin bartndr E R Filler r122 W Oak  
" Frederica (wid Fredk) h124 S Washn  
Franklin Dorothy Mrs mgr Cozy Rooms h119½ N Sacramento  
" Wm H (Eliz) h14 S Cordier  
Fraser Donald A h715 N School  
" May (wid Donald) r715 N School  
Freddi John lab r420 E Locust  
Frederick Albt (Leah) lab h425 E Lodi av  
" Edw (Margt) farmer h501 S Stockton  
Fredericks Eliz Mrs r324 E Locust  
" Wm lab r17½ W Pine  
Freeman Frank E (Lillian) jan h216 W Pine  
Freggero Pietro h211 Forrest av  
" Victor winerywkr r211 Forrest av  
Frembling L Robt (Fern) tchr Lodi Union High Sch h319 W Elm  
Freshour Cecil fruits 302 N Cherokee la  
" Chas (Bessie) h218 N Stockton  
" Edw lab r218 N Stockton  
" Frank W (Annie) h511 S Stockton  
" Fred L (Bertha) electn h436 E Walnut  
" Henry clk Cecil Freshour r302 N Cherokee la  
" Walter r218 N Stockton  
Freund Danl D (Christine) shtmtlwkr h429 Poplar  
Frey Alma nursery 118 W Lodi av  
" Andw (Rosina) h425 Eden  
" Eldon r212 W Locust  
" Emiel carp r14 S Rose  
" Henry H (Barbara) carp h14 S Rose  
" John (Carrie) h209 S Stockton  
" Otto r209 S Stockton  
Freymler Jack gas sta 1 N Cherokee la r429 E Lodi av  
" Joy r429 E Lodi av  
Fried Fred (Minnie) h509 E Oak  
" Herbt r509 E Oak  
" Merwin r509 E Oak  
" Rupert r509 E Oak  
Friedberger Alex V (Flora) women's furngs 6 N School h411 W Elm  
" -Blodgett Building 5½ W Pine  
" Irma slswn A V Friedberger r411 W Elm  
" Lazarre (Janice) slsmn A V Friedberger h210 Crescent av  
Friez Geo r328 E Lodi av  
" Jos r328 E Lodi av  
Froehlich Emma r736 S Washn  
" Gus (Christina) lab h736 S Washn  
" Harold lab r736 S Washn  
Froehnert Max J (Mabel) h303 Louie av  
Froling Oscar M (Nellie P) carp h514 E Elm

# STOCKTON COLLEGE OF COMMERCE

Secretarial

Accounting

Civil Service

FREE EMPLOYMENT SERVICE

When You Need Office Help, Either Permanent or Temporary, Ask Mr. Forkner

115 N. SUTTER ST.

TELEPHONE 325

**CRAMER COLLECTION SERVICE**

BONDED TO AND LICENSED BY THE STATE OF CALIFORNIA

DEBTORS LOCATED AND CONTACTED ANYWHERE

318 Bank of America Building

Stockton, California

554

(1937) R. L. POLK &amp; CO'S

Fromm Carl H (Frances) mech Krieger  
Motor Co h433 Tokay  
" Fred lab Shewan-Jones r Acampo  
Fueller John (Lydia L) chauf h454 Maple  
Fuhrman Chas (Emma) lab h312 Flora  
" Geo (Tina) wood dlr 412 N Church  
" June J r312 Flora  
Fuller Boine W (Mattabelle) mgr Western  
Auto Supply Co h407 W Oak  
" Lillian P (wid Robt) h203 S School  
" Robt S (Marion) sec Valley Lumber Co of  
Lodi h429 W Pine  
Fullerton Carl (Eliz) lab h rear 412 Railroad  
av  
Funk Jos (Ida) mach h329 W Daisy av  
" Wm (Dorothy) mach h111 De Force av  
Fuqua Henry (Nettie) winerywkr h rear 328  
E Lodi av  
Fyffe Everett O (Winifred) auto electn 230 S  
School h710 do  
Gable Chas N h124 S Stockton  
" Jacob lab r331 E Elm  
Gabriel Danl lab r232 Rush av  
" Helen Mrs r419 W Locust  
Gaede Menno (Ida) mech h429 Flora  
Gairdner John H r405 Harold  
Galbraith Loris B (Anita) bkpr Krieger Motor  
Co h1250 S Central av  
Co h1250 S Central av  
Galer Mabel R h rear 422 W Pine  
Gall John G (Mabel) mgr Blue Ribbon Milk Co  
and Borden's Ice Cream Co h214 W Oak  
Gallagher Millard (Lena) lab h rear 412 Rail-  
road av  
Galloway Anna (wid John) r230 S Lee av  
Gannon Jas r8 S Hutchins  
Gantner Jeane r200 E Lodi av  
Gardenhire Thos D (Estella) lab h4 Spruce  
" Vernon gas sta atdt r4 Spruce  
Gardner C M r312 Hilborn  
Garfield School 510 S Garfield  
Garibaldi Fred (Louise) h217 N Church  
Garlow Clarence H (Caroline) lab h rear 311  
Tokay  
Garner Clyde E (Vera) dental labty 5½ W  
Pine h221 S Cordier  
" Floyd E (Georgie H) rancher h21 Crescent  
av  
Garofolo Domenico (Rose) shoe shiner 7 N  
Sacramento h509 S Stockton  
Gass Kenneth C (Meredith) slsmn Krieger  
Motor Co h113½ N Hutchins  
Gatzert Clifford (Vivian) surveyor h511 E Pine  
" Melvina A. (wid Jacob) h511 E Pine  
Gaub Fred (Augusta) slsmn P W Loewen h309  
Hilborn  
" Raymond r309 Hilborn  
Gealey Miriam tchr Lodi Union High Sch

Gear Howard H (Eliz) h519 W Elm  
Gehman Ira r408 E Oak  
Geisert Frank M locksmith 217 N Sacramento  
r215 N Garfield  
" Lee r215 N Garfield  
" Saml H (Edith) lab h215 N Garfield  
Geist Fred (Eliz) lab h528 Tokay  
Gemar Fred (Cathrina) h725 S Washn  
Genear Theo A (Kath M) restr 113 N Cherokee  
la h519½ E Elm  
Gentilini Marie C r605 W Lockeford  
George Chas r619 Lincoln av  
" Cledis W (Anna) frt agt Central Calif  
Traction Co h619 Lincoln av  
" Jas r322 N Sacramento  
" Matilda J Mrs r227 N Hutchins  
" Robt A clk O F Beckman r619 Lincoln av  
Gerhart John (Sophia) meat ctr h508 Tokay  
Geringer Gottlieb (Emily) rancher h246 Pop-  
lar  
Gerlach Gustave A (Kathryn) v-pres Hender-  
son Bros Co Inc h319 W Oak  
German Congregational Church Rev H M  
Baumann pastor 529 S Garfield  
Gerrard S A Co H C Buford mgr fruit buyers  
33 E Oak  
Gerzevske Otto A (Agnes) lab Shewan-Jones  
h320 Hilborn  
Gesler Fred P (Dorothea) slsmn h520 W Lodi  
av  
Gesswein Pauline (wid Aug) h412 E Lodi av  
Gibbons Jas W (Ethel) clk Henderson Bros  
Co Inc h401 W Pine  
" Selina (wid Edgar) r401 W Pine  
Giberson Ernest F (Minnie) farmer h309 W  
Pine  
Gibson Jesse lab h rear 417 S Washn  
Gieck Danl (Mary) lab h335 E Lodi av  
Giedt Albt cement wkr Ed Spiekerman r322½  
E Walnut  
Gilbeau Clarence J (Mary) clk J P Gilbeau  
h330 Forrest av  
" Francis r333 W Daisy av  
" Jos P (Amelia) furn 106 N Sacramento  
h333 W Daisy av  
Giles Verna (wid Clyde) h418 W Pine  
" Viva r418 W Pine  
Gillette Orren H (Minnie) slsmn J W Wagers  
h601 N Sacramento  
" Ralph W (Rena) slsmn h304 W Walnut  
Gillies Lynn (wid C B) r401 W Oak  
Gimbel Clifford r405 E Lodi av  
" Kath G (wid Henry) h405 E Lodi av  
Giordano Eug h225 Rush av  
Giovannoni Cash E (Carrie) clk PG&E Co  
h409 W Daisy av  
Gishwell Fred h rear 343 E Oak  
Giuffra Aug lab h312 N Pleasant av

**DEAN WITTER & Co.**

STOCKS - COMMODITIES - BONDS

Members

New York Stock Exchange

Chicago Board of Trade

New York Cotton Exchange

New York Curb Exchange (Associate)

San Francisco Stock Exchange

18 South Sutter Street, Stockton

Stockton 2136

**JOHN DEERE****"CATERPILLAR"****KILLEFER****LeTOURNEAU**

COMPLETE LINES OF TRACTORS, ENGINES, IMPLEMENTS, LAND LEVELING AND ROAD MACHINERY AND EQUIPMENT

Phone 21

**L. F. GRIMSLEY, INC.**

Phone 225

STOCKTON

DISTRIBUTORS

LODI

LODI CITY DIRECTORY (1937)

555

Glad Tidings Temple (Pentecostal) Rev A A  
Lowe pastor 223 E Walnut  
Glaister Skelton D (Eudora H) h115 S Stockton  
Glantz Clarence (Lillian) lab h307 Poplar  
" David (Anna) h213 Flora  
Glazko Mary tchr r401 W Walnut  
Glick Chester A (Mae) jan h109 S Church  
" Harold D lab r306 W Oak  
" Irene tel opr r306 W Oak  
" Maude I (wid J L) h306 W Oak  
" Roy auto mech C C Perrin r306 W Oak  
Glock David (Marie) h309 W Pine  
Glos Robt E (Ruth) gas sta 229 S Sacramento  
h237 S Lee  
Glubrecht Fred (Eliz) rancher h424 E Oak  
Glynn Edwin A (Alice) plant supt Super  
Mold Corp h709 N School  
Goehring Edw (Charlotte) carp h842 S Washn  
" John W (Margt) drugs 514 S Central av  
h512 do  
Goertzen Harry r507 W Daisy av  
" Peter B (Lydia) lab h507 W Daisy av  
" Susanna r rear 124 S Stockton  
Goeschel Jos h rear 208 Hilborn  
Golly Alice Mrs r209 S Rose  
Gong Chong (Palace Meat Mkt) r21½ S Sacra-  
mento  
Goodfellows Coffee Shop (Christ Papalias  
Saml Babis) 39 N Sacramento  
Goodman Ruth (wid Roy) women's furngs  
18 W Walnut  
Gooler Geo H piano tuner 526 E Lodi av  
" Ina r526 E Lodi av  
Gordon Frank H (Minty) r220 N Garfield  
" Wilbur W (Agnes) lab h220 N Garfield  
Gorsuch Estelle S r721 Lincoln av  
" Jas L (Susie) lab h721 Lincoln av  
Gould Frank H (Matilda) mach h541 E Locust  
Gove Ida A h221 W Elm  
Grabau Fred r807 S Washn  
Graber Herbt E (Lucille) bkpr h22 S Pleasant  
av  
Graf Bertha maid 411 W Elm  
GRAFFIGNA EMIL F (Ruth) Auto Supplies  
108 N Sacramento and City Councilman,  
h616 N Pleasant Av  
" Frank lab Community Grape Corp r819 N  
Calif av  
" Giacomo (Ida) winemkr Community Grape  
Corp h819 N Calif av  
" Marie slswn A V Friedberger r819 N Calif av  
" Marjorie r819 N Calif av  
" Rita r819 N Calif av  
Graham Agnes E tchr Lodi Union High Sch  
r406 W Oak  
" Malcolm lab PG&E Co r Woodbridge  
" Sadie J (wid R L) h123 W Walnut

Grant Albt r749 S Washn  
" Chester r749 S Washn  
" Rolland A (Ruth) h749 S Washn  
Granlees Ann K Mrs h417 W Walnut  
" Virginia r417 W Walnut  
Grapau Anna (wid John) r509 Flora  
Grasmick Esther V sten r303 E Elm  
" Gottlieb (Kate) bottler h303 E Elm  
" Helen F r303 E Elm  
Grasso Irene beauty opr r501 E Elm  
" Jos P (Palmina) winerywkr h501 E Elm  
Grater Geo auto mech P W Loewen r Stockton  
Gray Chas R (Viola) lab h16 W Oak  
" David A r12 N Stockton  
" David A jr (Lillian) h12 N Stockton  
" Fred A (Myrtle) lab h rear 517 Tokay  
" Verle R lab r16 W Oak  
" Viola Mrs mgr Paukett Apts r16 W Oak  
" Wm carp r39 S Sacramento  
Grebol Herman h217 E Lockeford  
Green Daveta Mrs r345 E Walnut  
" Edwin A r337 Hilborn  
" G Frank r207 W Elm  
" Myrtle (wid W C) tchr Emerson Sch h406  
W Elm  
" Thelma clk M W Smith  
" Thos C (Irene) rancher r140 S Orange av  
" Wm C (Amelia) mgr Krieger Motor Co h208  
S Cordier  
Greeneich David D lab Shewan-Jones h21 W  
Lodi av  
Gregg Bessie W Mrs tchr Garfield Sch r207 1st  
" Clyde H (Bessie W) clk P O h207 1st  
" Lulu M drsmkr r103 S Cherokee la  
" Ollie (wid Wm) r207 1st  
" Ward M (Emma E) bldg contr 105 S Chero-  
kee la h103 do  
Grentz Jacob B (Fannie) carp h27 N Washn  
Grenz Millard r514 S Washn  
" Mollie (wid Henry) h514 S Washn  
Grieser Adolph H (Lydia) carp h217 Eden  
Griffin Carl L (Effie) mach h11 W Lockeford  
" Effie L dep City Clerk r11 W Lockeford  
Griffith Nellie F (wid W F) clk City Light &  
Water Dept h105 E Locust  
" Thos J tamale mkr Michl Monte r912 S  
Stockton  
" Walter tractor opr r105 E Locust  
Grigsby Lucy L (wid Edw S) h507 W Elm  
Grimsley Guy (Viola) h218 N Washn  
" L F Inc J P Gurney mgr agrl impts 124 N  
School  
" Viola R lab Shewan-Jones r218 N Washn  
Grinnell E Alice (wid Clarence) h343 E Oak  
" Viva r343 E Oak  
Griswold Chas R h421 E Walnut  
" Ethel r421 E Walnut  
" Harriet E tchr Garfield Sch r421 E Walnut

**THE PRINTWELL PRESS**

ALBERT A. BAKER, Proprietor

GOOD PRINTING

Telephone 2830

334 East Channel Street, Stockton