

Hood Joel rt 1 bx 427
 Hoog Chester rt 1 bx 921
 Hooper M W (Ramona) rt 1 bx 522
 Hoover E rt 2 bx 196
 Hopkins Clair A rt 2 bx 292
 " Hollis E rt 2 bx 292
 Hopper Aldean rt 2 bx 985
 Hopps J rt 2 bx 273
 " R rt 2 bx 273
 Horato K rt 1 bx 836
 Horita R A rt 1 bx 834
 Horr Christina Mrs rt 4 bx 50d
 " John rt 4 bx 40d
 Houchins Ella Mrs rt 2 bx 957
 " Geo rt 2 bx 957
 Hough G W rt 1 bx 346
 " G W jr rt 1 bx 901
 Houseman Lillie rt 3 bx 100
 Houser A D rt 1 bx 952
 " Bessie rt 1 bx 432
 " J W rt 1 bx 432
 Housh P F rt 1 bx 74
 Howard Charlsie rt 2 bx 906a
 " Jack (Beatrice) rt 5 bx 29
 " Jas rt 2 bx 906a
 " Laura M Genl Del
 " R C jr Mrs Genl Del
 Howe F B rt 4 bx 429
 " Laura rt 4 bx 429
 Howell Fred H rt 2 bx 923
 " Lester H (Margt) rt 2 bx 870
 " Mae rt 2 bx 923
 " W W rt 3 bx 58c
 Howes LeNord Genl Del
 Haweth Roy E rt 2 bx 128
 Howerton Bros rt 3 bx 470
 Howes J F rt 4 bx 64k
 Hoyt S M rt 1 bx 810
 Hubbard Elsie rt 4 bx 34
 Hubner Geo (Mary) rt 6 bx 92b
 Hucksall H H rt 1 bx 563
 Huddleston A rt 2 bx 909
 " Zada rt 2 bx 909
 Hudlow H R rt 3 bx 26a
 Hugden D D rt 3 bx 20
 Hughes Anne rt 1 bx 964
 " Grace Mrs rt 4 bx 22
 " Leonarda rt 3 bx 294½
 " M J (Ella) rt 6 bx 126
 " Margt rt 1 bx 964
 Hughs T A (Blanche) rt 3 bx 51a
 Hughson Carl B rt 1 bx 939
 " Jennie Mrs rt 1 bx 939
 Hull C V (Verne) rt 3 bx 137
 " Glenn rt 2 bx 106
 " Mattie rt 4 bx 69d
 Hulslander F D rt 3 bx 2aa
 Humbert Jos D (Henrietta) rt 1 bx 293
 Hunnewell G A rt 3 bx 47r
 Hunt Henry rt 6 bx 156
 " John rt 6 bx 156
 " O P rt 1 bx 461
 " Robt rt 6 bx 156
 Hunter C Mrs rt 4 bx 1394
 " Dan rt 1 bx 240
 " H W rt 4 bx 134
 " Jennie Mrs rt 4 bx 134
 " John S rt 4 bx 134
 " Jos (Johanna S) rt 5 bx 10
 Huntley Harper P rt 5 bx 26
 Hurn Eug rt 3 bx 447
 " Nora M rt 3 bx 447
 Hurt C D rt 2 bx 953
 " Evadna Mrs rt 2 bx 953
 " V C (N R) rt 6 bx 236
 Hutching L S rt 6 bx 386
 " Morey rt 6 bx 386
 Hutchinson John L rt 4 bx 50
 Hyman Jack rt 4 bx 81x
 " Margt Mrs rt 4 bx 81x
 Iaha E L rt 1 bx 69
 Ikeda Ruth rt 2 bx 277
 Infelise Antoinette rt 4 bx 73z
 " Carl rt 4 bx 73z
 " Frank rt 4 bx 73z
 " John rt 4 bx 73z

Inger Arth W rt 4 bx 40d
 " Martha rt 4 bx 40d
 Irish T B rt 2 bx 276f
 Irwin Geo H rt 3 bx 321
 Isaacson A rt 2 bx 928
 Isbell Cleo rt 3 bx 509
 " Floyd rt 4 bx 419
 " Lucille rt 4 bx 419
 " Martha Mrs rt 4 bx 419
 " Paul rt 4 bx 419
 " Robt Mrs rt 3 bx 509
 Isert Emil rt 2 bx 149
 " J E rt 2 bx 149
 Ito R rt 5 bx 162
 " S rt 3 bx 103
 Iwata H rt 6 bx 253
 " S rt 6 bx 253
 Jacinto R J Mrs rt 5 bx 542
 " Rupert J Mrs rt 5 bx 542
 Jack Edw H (Helen H) rt 6 bx 241d
 Jackson Gladys Genl Del
 " Henry rt 6 bx 389
 " M M rt 1 bx 494
 " Thos A Genl Del
 " Thos W rt 2 bx 189
 " Walter T rt 2 bx 189
 " Wm W rt 2 bx 189
 Jacobs L E rt 2 bx 904a
 Jacobsen Olive rt 6 bx 140
 Jacobson Daisy rt 6 bx 219
 " Dorothy rt 6 bx 219
 " Edw D rt 1 bx 732
 " Geo rt 6 bx 219
 " Louis E rt 1 bx 732
 " Mary C Mrs rt 1 bx 732
 Jacot Marjorie rt 4 bx 18d
 Jacovich Louis rt 1 bx 694
 James Agnes rt 4 bx 413
 " G P (L L) rt 6 bx 246
 " R E rt 4 bx 413
 " R M rt 2 bx 895
 Jamie David rt 1 bx 750
 Jamieson Oregon rt 6 bx 187
 Jane Elmer Mrs rt 4 bx 42w
 Janivier L rt 2 bx 121
 Jaramillo Henry rt 4 bx 16c
 Jarvis Addie Mrs rt 4 bx 1060
 " L A rt 4 bx 1060
 Jatou Kenneth I rt 4 bx 65a
 " Olive M rt 4 bx 65a
 Jaumes R rt 1 bx 734
 Jaurenquite P rt 2 bx 986
 Jenkins Armanda rt 4 bx 334
 " Clyde rt 4 bx 206
 " J E rt 3 bx 437
 " Thos rt 4 bx 334
 " W C rt 4 bx 206
 Jennings E L rt 3 bx 52j
 " Geo W rt 2 bx 309
 Jensen Alvin rt 2 bx 146a
 " Gay Mrs rt 3 bx 3a
 " Jorgen E Dr (Ida J) rt 5 bx 126
 " T rt 2 bx 146a
 " Thea Mrs rt 2 bx 146a
 Jerpback Henry O rt 2 bx 507
 Jillson Ira L rt 4 bx 427g
 " Zoe rt 4 bx 427g
 Jimerson Mary rt 2 bx 911
 Jiminez Cirilo rt 2 bx 285a
 " Eladio rt 2 bx 285a
 " Louie rt 2 bx 285a
 Johanaber Robt H rt 4 bx 164
 John Ida rt 2 bx 322
 Johns Evelyn Mrs rt 6 bx 185
 Johnson Albt rt 5 bx 13
 " C P rt 4 bx 427
 Johnson C W rt 1 bx 56
 " Chesley T rt 4 bx 153
 " Edith rt 4 bx 314
 " Edna rt 3 bx 2b
 " Ernest T rt 4 bx 174
 " Dorothy B rt 4 bx 153
 " E rt 2 bx 891
 " Emma Mrs rt 3 bx 7b
 " Geo (Nellie) rt 1 bx 259
 " Geo rt 4 bx 81x
 " Gertrude rt 3 bx 50L

Johnson Helen rt 4 bx 81
 " Leo J rt 4 bx 125b
 " Lester M rt 4 bx 81c
 " Marie rt 2 bx 114
 " N rt 1 bx 205
 " O C rt 1 bx 594
 " Ovid V rt 3 bx 162
 " R B rt 2 bx 273
 " Ray H rt 2 bx 232
 " S W rt 4 bx 153
 " W C rt 3 bx 47b
 " Wendell A rt 4 bx 314
 Johnston David J rt 4 bx 54f
 " John W rt 3 bx 6d
 Johnstone C J Dr rt 2 bx 273
 " Harry rt 1 bx 618
 " John H rt 2 bx 55
 " Mary A rt 2 bx 155
 Jones A B rt 4 bx 55a
 " A C rt 5 bx 284
 " A G rt 1 bx 902
 " A L rt 3 bx 52y
 " Barnett rt 1 bx 902
 " C A rt 3 bx 50h
 " Clarence (Cath) rt 5 bx 725
 " D E rt 3 bx 90a
 " Dolores rt 1 bx 902
 " Edw W rt 4 bx 9
 " Evelyn rt 3 bx 50h
 " Irma rt 4 bx 393
 " L H rt 1 bx 203
 " Laura M rt 1 bx 203
 " Lydia M rt 3 bx 50h
 " Mary E rt 1 bx 561
 " Olive A rt 4 bx 3g
 " Sarah E rt 4 bx 86
 Jordan Helena rt 3 bx 8h
 " Lawrence rt 2 bx 84
 " Vera rt 4 bx 126
 Jory Frank rt 6 bx 193
 " Walter (Mary) rt 3 bx 141
 Joses Henry A rt 4 bx 257
 Joy R J (Ora) rt 3 bx 50y
 Juday T J rt 4 bx 152
 Juenke Aug rt 1 bx 803
 Junction Service Station rt 2 bx 282
 Junker L Mrs rt 4 bx 100
 Jurgenson John (Christina) rt 5 bx 103
 Jury W E (Kath) rt 3 bx 471a
 Justice R L (Nellie) rt 3 bx 47a
 " S L Genl Del
 Jwanitas C Y rt 3 bx 395
 K & W Radio Service rt 2 bx 990 and
 rt 3 bx 32b
 Kaiser Chas rt 4 bx 371
 " E J rt 1 bx 371
 " Felton rt 4 bx 1080
 " Geo rt 4 bx 371
 " L A rt 2 bx 785
 " Lena Mrs rt 4 bx 371
 " W K rt 4 bx 1080
 Kalend Joe (Mary) rt 3 bx 59½
 " Virginia rt 4 bx 45
 Kallergren J A rt 1 bx 606
 Kamidoi T rt 4 bx 491
 Kanada F rt 6 bx 225
 Kaneka T rt 4 bx 460
 Kanemoto K Mrs rt 6 bx 321
 " T rt 6 bx 498
 Kantz Fred rt 3 bx 142b
 " L rt 3 bx 142b
 Karry Albt rt 6 bx 205
 " Jos rt 6 bx 205
 Kasa J rt 4 bx 465
 Kasch Jeanette rt 5 bx 748
 " Marie J rt 5 bx 748
 " Nettie rt 5 bx 748
 Kato John (Bessie) rt 3 bx 30
 Kato R rt 1 bx 775
 " S rt 5 bx 183
 Kaumirah M rt 5 bx 75
 Kaus Eleanor rt 1 bx 151
 " Ferdinand rt 1 bx 151
 " Olga rt 1 bx 151
 Kawagutke S rt 6 bx 212
 Kawamura S rt 2 bx 204

(GREEN BROTHERS)

CLARK HOTEL PHARMACY

TOM AND HARRY GREEN



193

Stockton

Prescriptions

400 E. MARKET

Toiletries

Sundries

FREE DELIVERY UNTIL MIDNIGHT

STOCKTON RURAL ROUTES (1935)

563

Kayashima T rt 4 bx 439
 Kearney Francis rt 3 bx 11w
 Keeley Lowell rt 2 bx 70
 Keen Chas C rt 4 bx 239
 Keinlen J Mrs rt 6 bx 17
 Keller Anna J rt 3 bx 22y
 " Florence Mrs rt 2 bx 172a
 " Geo R rt 2 bx 172a
 " Helen rt 2 bx 188
 " R A rt 2 bx 172a
 " W E rt 2 bx 188
 Kellett F H rt 4 bx 428
 " Muriel rt 4 bx 428
 Kelley Chas M (Nora) rt 3 bx 52y
 " E L rt 2 bx 150
 " J J Genl Del
 " John C (Ida) rt 3 bx 22vv
 " Mary E Genl Del
 " S L rt 2 bx 150
 " Twita Mrs rt 3 bx 51s
 Kelling Marcella rt 4 bx 1389
 " Wilbur A rt 4 bx 1389
 Kempf John rt 6 bx 130
 Kendrick Gertrude rt 5 bx 270
 Kennard Lloyd rt 1 bx 612c
 " W C rt 3 bx 7w
 Kennedy Chas W rt 2 bx 126b
 " John M rt 2 bx 126b
 " Lillian R Mrs rt 2 bx 126b
 Kenney Genevieve rt 6 bx 15
 " Richd (Clara) rt 3 bx 26h
 " Wm W rt 6 bx 15
 Kenny D A rt 1 bx 117
 Kent M E (Mary) rt 6 bx 117
 Keppel Chas E rt 1 bx 132
 Kerkens Gus rt 4 bx 418v
 " Margt rt 4 bx 418v
 Kern Albt (Alfaretta) rt 3 bx 75½
 " Otto rt 1 bx 744
 Kessler Jas W rt 1 bx 753
 Kettlewood M Mrs rt 5 bx 5a
 Keyser Lester C rt 5 bx 288
 Kidd Gladys rt 3 bx 6h
 Kier C A rt 1 bx 376
 Kieser John rt 4 bx 418s
 Kigin Edythe rt 3 bx 22zz
 Kimball Craig rt 4 bx 1412
 " H B rt 4 bx 1412
 Kimberling Bell rt 2 bx 254a
 Kinder Wm rt 4 bx 27d
 King D W rt 3 bx 122m
 " Flora G rt 2 bx 187b
 " G C rt 6 bx 228
 " Lester L rt 3 bx 128
 " R J rt 3 bx 122m
 " S K rt 4 bx 419
 " W E Mrs rt 2 bx 187b
 Kingerey Ethel M rt 6 bx 200a
 " Grace E rt 6 bx 200a
 " Roy F rt 6 bx 200a
 Kingsley Babbie rt 1 bx 902
 Kinsey A E Mrs rt 2 bx 987
 " Ellen rt 2 bx 987
 " H C rt 4 bx 2a
 Kintanilla Leon A rt 5 bx 75
 Kirk C L rt 3 bx 47f
 " Fred Mrs rt 3 bx 59d
 " Ruth rt 3 bx 59d
 Kirkland C R rt 4 bx 110c
 Kishi Y rt 1 bx 764
 Kitagawa J rt 4 bx 430
 Kito K T rt 6 bx 212
 Kitterman Elmer (Eldori L) rt 5 bx 508
 " John W (Nellie) rt 5 bx 407
 Kitto Gertrude Mrs rt 2 bx 957
 " Ogden rt 2 bx 957

Kitto Rogers S rt 2 bx 957
 Klein Albt rt 3 bx 27r
 " Albt F rt 1 bx 476
 " Antone Mrs rt 1 bx 476
 " Edna B rt 1 bx 72a
 " Geo W F rt 1 bx 72a
 " J rt 1 bx 479
 " Jos L rt 3 bx 14
 " Wm rt 1 bx 476
 Kleinstaubert Bertha rt 4 bx 1051
 " Paul rt 4 bx 1051
 Klinger Avery rt 2 bx 492f
 " F A rt 2 bx 492f
 " Margt rt 2 bx 492f
 Klo Jas rt 2 bx 488
 Knapp La Verne rt 3 bx 292
 Knell Louis rt 4 bx 104
 Kneppler L G rt 1 bx 324
 Knight A F rt 4 bx 330
 " Stella rt 3 bx 48f
 Knowles Roy L (Bertha) rt 1 bx 508
 Knox G rt 5 bx 59
 Knudson Clarence rt 3 bx 6h
 " Cora E rt 3 bx 6h
 Knutsen Olav rt 6 bx 440r
 Koga G rt 2 bx 501
 " J rt 2 bx 247
 Kohlase Wilhelm rt 6 bx 153
 Kohlhaugen H O rt 2 bx 118m
 " Margt M rt 2 bx 118m
 Kohnesh Barbara rt 6 bx 166
 Kohnke Theo rt 5 bx 123
 Kolbe B T rt 5 bx 36
 Koping Twita Mrs rt 3 bx 51s
 Korntas Jas rt 1 bx 652
 Kosich Geo rt 4 bx 40
 Kosky Frank rt 2 bx 904 a
 Kosta Jessie Q rt 6 bx 103
 " John rt 2 bx 854
 Kostas Thos (Julia) rt 3 bx 9c
 Kountz Donald rt 3 bx 451
 " Richd F rt 3 bx 451
 Kraft Harley S (Cleo) rt 3 bx 477
 Krah Chas W rt 2 bx 141
 " Della rt 2 bx 141
 " Emma rt 2 bx 141
 Krauzler Henry rt 3 bx 122a
 Kratz Carl (Anna J) rt 3 bx 22y
 Krause Orlando rt 2 bx 232a
 Kauyler Henry rt 3 bx 122a
 Kreis H rt 1 bx 585
 Kreuder Geneta rt 4 bx 40d
 " Henry rt 4 bx 40d
 Krinder Gineta rt 4 bx 40d
 " Henry rt 2 bx 40d
 Kristersen J L rt 1 bx 614
 Kroman Peter rt 5 bx 256
 Kromann H L (Myrtle) rt 6 bx 112
 " Inez rt 6 bx 112
 Krueteb Herbit rt 1 bx 163
 Krug Philip rt 2 bx 900
 Kuckuck Fred (Lena) rt 5 bx 201
 Kuehn Gustave rt 6 bx 267
 Kuwa Fusakichi rt 4 bx 495
 Kulas F rt 2 bx 273
 Kyle & Co rt 2 bx 492f
 La Bath John (Lenora) rt 5 bx 57
 La Berge Fay rt 3 bx 22zz
 Laekas Wm C rt 3 bx 7y
 Lacy A E rt 2 bx 125
 " Edith Mrs rt 2 bx 125
 " Orville rt 1 bx 174
 Ladd E S rt 4 bx 387
 " F G rt 4 bx 483
 " G Allen rt 4 bx 425a
 " John rt 6 bx 426
 " Lillie I rt 4 bx 392

Ladd Marie rt 4 bx 387
 Lafferty A rt 6 bx 450
 La Fout Fred R rt 3 bx 25f
 " L A rt 3 bx 38
 La Frenz Conklin rt 1 bx 783
 " Eliz rt 1 bx 783
 Lagario Angelo rt 4 bx 235
 " Mary rt 4 bx 235
 Lagler Jos N rt 6 bx 325
 " Nick (B) rt 6 bx 325
 " Wandeline rt 2 bx 325
 Lagomarsino Andw rt 4 bx 82
 " Angeline rt 4 bx 82
 " Emil rt 1 bx 631
 " Frank rt 1 bx 707
 " G B rt 1 bx 628
 " Geo rt 4 bx 82
 " Joe rt 1 bx 780
 " L rt 1 bx 677
 " Louis rt 4 bx 82
 Lagori Bros rt 3 bx 382
 " A rt 1 bx 529
 " A rt 1 bx 632
 " G rt 1 bx 99
 " Ronald rt 1 bx 647
 " V rt 1 bx 647
 Lagutta J rt 4 bx 110c
 Lakatsas G rt 3 bx 339
 Lalli D rt 2 bx 556
 La Marr Walter M rt 2 bx 158
 Lamb Geo M rt 4 bx 17c
 " P E Mrs rt 4 bx 34c
 Lambert A L rt 6 bx 295c
 Lamoglic P rt 4 bx 110e
 Lamperti Chas rt 2 bx 37w
 " Dan rt 2 bx 37w
 " Rita rt 2 bx 37w
 Lampkin Marie rt 3 bx 40
 Lamsford Eug G rt 1 bx 909
 " Geo A rt 1 bx 909
 " Geo R rt 1 bx 909
 " Helen rt 1 bx 909
 Lancaster H A rt 4 bx 137
 Lancuaud G rt 4 bx 96
 Landucci A rt 3 bx 96
 Lane Ed (Nettie) rt 5 bx 278
 Langille R B rt 1 bx 362
 Langley T rt 5 bx 89
 Langstaid G M rt 1 bx 108
 Lapeck F J rt 4 bx 418w
 Lapeyri Elva Mrs rt 4 bx 112
 " Julien rt 4 bx 112
 " Louis rt 4 bx 112
 Lapid G rt 4 bx 109
 Laugey Alf (Kate) rt 5 bx 518
 Larkay Carl rt 4 bx 378
 " R J rt 4 bx 378
 Larkin A Mrs rt 5 bx 252a
 " Emmet rt 5 bx 252c
 " Jas J rt 5 bx 252a
 " John rt 5 bx 252b
 " Mathew J (Julia) rt 5 bx 252b
 La Rossa Jim rt 1 bx 708
 Larsen Edw rt 2 bx 322
 " Inez H rt 4 bx 329
 " J E rt 1 bx 625
 Larson Ernest rt 4 bx 476
 " Inez H rt 4 bx 329
 " John G rt 4 bx 60m
 " John M rt 4 bx 327
 " Mary rt 4 bx 476
 " Myrtle rt 4 bx 327
 La Rue G rt 1 bx 561c
 Lasala A rt 1 bx 455
 Laskins Victor P rt 5 bx 51
 Laswell Frank rt 3 bx 22zz
 Latimer G C rt 5 bx 707

- Laucei J G (Caroline) rt 5 bx 230b
 " Louis rt 2 bx 230b
 " M rt 5 bx 184
 Laudenbach Fred rt 4 bx 39y
 Laudenback H W (Eda) rt 3 bx 64½
 " Robt rt 3 bx 66
 Lauderbaugh Harry E rt 1 bx 612a
 Laughery W A rt 4 bx 392
 Laughlin Harry V rt 2 bx 165
 " Russell rt 4 bx 267
 Lauth R rt 1 bx 70
 Lavaggi Andw rt 4 bx 239
 Lavender G H (W L) rt 6 bx 425
 " W rt 6 bx 425
 La Vida Mineral Water rt 2 bx 150
 Lavotte J rt 3 bx 107
 Lawrance H R rt 4 bx 45k
 " Nellie Mrs rt 4 bx 45k
 Lawrence F F rt 1 bx 73
 " Tony rt 4 bx 99
 Lawton Hugo C rt 2 bx 174
 " Phillip L rt 2 bx 174
 Layman Geo E rt 1 bx 442
 Leach Donald rt 4 bx 499b
 " Ernest rt 4 bx 499b
 " Kathryn rt 4 bx 499b
 " Ray rt 4 bx 499
 Leahy Annie M rt 2 bx 956
 " Emmett rt 1 bx 441h
 Leale Chas rt 1 bx 825
 Leandro F rt 1 bx 317
 Leonard E rt 1 bx 586
 Learned Alvin rt 4 bx 487
 " Birdie Mrs rt 4 bx 487
 " Chas rt 4 bx 487
 " H C rt 4 bx 487
 " Merlin rt 4 bx 487
 " Willard S rt 4 bx 484
 Lebow M rt 5 bx 17c
 Lee C F rt 1 bx 112
 " Everett rt 3 bx 7y
 " F H rt 1 bx 112
 " M E rt 1 bx 668
 " Robt rt 3 bx 21
 Leffingwell Ella B Mrs rt 4 bx 1295
 " H C rt 4 bx 1295
 Leffler Edith rt 3 bx 139
 " Frank rt 3 bx 139
 " Geo J rt 1 bx 743
 " H G rt 3 bx 139
 " J rt 4 bx 1325
 " Pierce rt 1 bx 746
 " W C rt 1 bx 748
 " W H (Verne) rt 3 bx 172½
 Legdecker C rt 3 bx 135
 Legner A F rt 4 bx 405
 Lehman F W rt 6 bx 295
 Lehr Fred rt 3 bx 501
 Leiningr D W rt 1 bx 590
 Le Large Robt rt 2 bx 145
 Le Masters S R rt 3 bx 9m
 Lemka Stella rt 4 bx 453
 Lemoin W H rt 1 bx 208
 Lemond Jos rt 4 bx 41a
 Lemos June rt 1 bx 561f
 Lenz C rt 4 bx 37b
 Leonard Frank J rt 4 bx 1100
 Leonardini A V rt 3 bx 389
 " B rt 3 bx 172f
 " Edna rt 1 bx 780
 " G B rt 3 bx 379c
 " L rt 3 bx 374
 " Leo rt 3 bx 390a
 " M (Doris) rt 3 bx 36f
 Leoni A M rt 4 bx 25
 Lertora D (Marian) r 13 bx 2
 " Niola rt 3 bx 2
 Lesti Orlando rt 4 bx 6
 Lewallen Allie Mrs rt 3 bx 469
 " C W rt 3 bx 5a
 " Sarah rt 3 bx 5a
 Lewis Anna C rt 3 bx 59
 " Ben H rt 2 bx 58g
 " Carol B rt 2 bx 58g
 " Chas rt 1 bx 359
 " Clara A rt 4 bx 1130
 " Dona rt 2 bx 58g
- Lewis G M rt 3 bx 11g
 " Geo E rt 4 bx 1130
 " H E rt 2 bx 922
 " Henry E rt 6 bx 440r
 " Jas E rt 4 bx 1130
 " Jeff E rt 1 bx 727
 " Jos Mrs rt 3 bx 38a
 " Larue A rt 6 bx 123a
 " Lois G rt 2 bx 924
 " Mary rt 1 bx 727
 " Mickey rt 3 bx 10j
 " Mollie H Mrs rt 6 bx 440r
 " R B Mrs rt 3 bx 10j
 " Richd E rt 2 bx 924
 " S F (Marian) rt 3 bx 2b
 " Wm rt 1 bx 197
 Ley J O rt 4 bx 153w
 " M O (Mary E) rt 4 bx 153w
 " Olga C rt 4 bx 153w
 Libhart John E (Marcella) rt 3 bx 3c
 Lichtenwaiter W M rt 4 bx 414r
 Liddicoat Clarence rt 2 bx 892
 " E (Inez) rt 3 bx 22zz
 Liegner Danl rt 4 bx 498
 Liel Edw rt 2 bx 249a
 " John rt 2 bx 249a
 " Manuel A rt 2 bx 249a
 " Mary rt 2 bx 249a
 " Robt rt 2 bx 249a
 Lien Geo rt 4 bx 47k
 Liepelt Paul H rt 2 bx 92
 Life Builders Association rt 1 bx 351
 Lightning Delivery r 4 bx 51
 Lillard Ethel rt 5 bx 780
 Lillig Irma rt 4 bx 9b
 Lim Louie rt 5 bx 84b
 Lind Oscar rt 4 bx 459
 Lindberg J C rt 6 bx 308
 Lindley Albt (MV) rt 5 bx 66
 Lindsay Fred rt 6 bx 378
 Lindsey Roy rt 1 bx 218
 Linstrom C H rt 6 bx 340
 Linz Fred J rt 1 bx 795
 Linz Natalie rt 1 bx 795
 " Wanda rt 1 bx 795
 Lister P rt 1 bx 832
 Little Carrie rt 1 bx 487
 " Dora S rt 2 bx 926
 " E E (Ida M) rt 3 bx 469
 " Emma J rt 4 bx 56w
 " Ernest L rt 2 bx 926
 " Eurrice rt 1 bx 487
 " Francis rt 1 bx 487
 " J H rt 1 bx 487
 " J H Mrs rt 4 bx 56w
 " Lois rt 2 bx 926
 " Mary K rt 2 bx 322
 Littlefield A E rt 1 bx 613
 " L rt 6 bx 318d
 " Richd rt 6 bx 318d
 Littleton Chas M rt 4 bx 51
 " Clarence A rt 4 bx 51
 " Eug B rt 4 bx 52
 " Josephine rt 4 bx 52
 " Kenneth C rt 4 bx 51
 " Laurence rt 4 bx 52
 " Mary A rt 4 bx 51
 " Wilbert C rt 4 bx 52
 " Wm E rt 4 bx 52
 Livingston Byron T rt 2 bx 118s
 " Frank C rt 1 bx 542
 Lockie R M rt 3 bx 313
 Loftquist Harold (Mabel) rt 1 bx 683
 Logan Lena rt 1 bx 811b
 Lommasson C J rt 6 bx 447
 Long C C rt 6 bx 282
 " Clyde W rt 2 bx 138
 " Henry rt 6 bx 282
 " Kath F Genl Del
 " Lena rt 6 bx 282
 " Mary rt 3 bx 43h
 " R T rt 4 bx 21
 " W S rt 1 bx 472
 " W W rt 1 bx 472
 " Wm Genl Del
 " Wm J Genl Del
- Longaere Earl (Mary) rt 3 bx 10½
 " L G rt 3 bx 22w
 " W (Louise M) rt 3 bx 10a
 Look Isabel rt 2 bx 889
 " Mildred rt 2 bx 889
 " Vernon rt 2 bx 889
 Loomis L W rt 1 bx 768
 Looney John rt 4 bx 1070
 Looper Mary E rt 2 bx 493
 " Wm C rt 2 bx 493
 Lopes A L (Emily) rt 6 bx 333
 Lopez Allie rt 4 bx 427p
 " Jos F rt 4 bx 39x
 " Manuel rt 2 bx 288
 " Pete Genl Del
 " Ramon rt 5 bx 75
 Lord Derrick rt 2 bx 128i
 Lorentzen Emil rt 2 bx 149
 " Tillie rt 2 bx 149
 Lorenzi Clemente rt 4 bx 161
 Loreto Anthony R rt 2 bx 514
 Lorraine Jas rt 3 bx 47c
 Loutt Reinhold rt 1 bx 70
 Love Vernon C (Bertha) rt 3 bx 1n
 Lovell Wm rt 4 bx 453
 Lowes J rt 2 bx 40f
 Lucas Chas rt 4 bx 324
 " Hazel rt 4 bx 1151
 " J A rt 1 bx 47
 " John A rt 4 bx 1151
 Lucchese Amabile rt 3 bx 80
 " P rt 3 bx 121b
 Luchesi A rt 1 bx 702
 " Louis rt 1 bx 709
 " Mary rt 1 bx 709
 " Victor rt 1 bx 709
 Luchetti Antonio rt 4 bx 38
 " L rt 3 bx 130
 Lucken Geo A rt 2 bx 4
 Lucky Ranch rt 3 bx 172b
 Lucy Jas (Julia) rt 5 bx 68
 Ludington B W Mrs rt 2 bx 128b
 " Ella Mrs rt 2 bx 128b
 " Flora B rt 2 bx 128b
 Lugo Toney rt 3 bx 41
 Luiz A W rt 5 bx 112
 Lukes Ida M Mrs rt 1 bx 42
 Lunbeck E B rt 2 bx 122
 " Gertrude E rt 2 bx 122
 Lund J P rt 4 bx 56
 " Nelson rt 3 bx 416g
 Lungren Raymond rt 6 bx 440f
 Lupelch Martin rt 1 bx 515
 Lusardi C rt 6 bx 356
 Lusso T C rt 4 bx 1440
 Lux Elinore rt 4 bx 472
 " Genevieve rt 4 bx 472
 Lyman D B rt 1 bx 782
 " J F rt 2 bx 120
 Lynas Thos rt 2 bx 273
 Lynn K T rt 1 bx 119
 " R C rt 4 bx 15 b
 Lynos Thos (Mildred) rt 5 bx 20
 Lyons Chas T rt 4 bx 210
 " G M rt 1 bx 195
 " J W rt 2 bx 285b
 " Vinie Mrs rt 6 bx 202
 " W H rt 1 bx 815
 Lytle C W rt 3 bx 21r
 " Ellen M rt 2 bx 127a
 " Wm rt 2 bx 127a
 Maasberg R C rt 1 bx 35
 Mabbot E C rt 1 bx 327
 MacDonald Barbara M rt 2 bx 144a
 " Corinne Mrs rt 2 bx 144a
 " Peter A rt 2 bx 144a
 MacGahan A rt 2 bx 273
 Machado J rt 5 bx 91a
 " John R rt 4 bx 222
 " Jos rt 4 bx 222
 " Manuel rt 3 bx 28bb
 " Marie Mrs rt 4 bx 222
 Mack Irish rt 2 bx 276f
 MacLewi Chas rt 5 bx 94i
 Madden F P rt 1 bx 129
 " J rt 2 bx 273
 " John R (Allie V) rt 6 bx 12

CRAMER COLLECTION SERVICE

LICENSED AND BONDED
DEBTORS LOCATED AND CONTACTED ANYWHERE

318-19 Bank of America Bldg.

Stockton, California

STOCKTON RURAL ROUTES (1935)

565

Maddock Geo rt 1 bx 179
Madera Manuel (Rose) rt 5 bx 545
Maderios B N rt 1 bx 762
Maes Juanita rt 3 bx 43c
Magarrrell K E rt 1 bx 212
Magennis Earl rt 1 bx 609
Maggini Anne rt 4 bx 353
" Chas rt 4 bx 386
" Ernest rt 4 bx 353
" Fred rt 4 bx 386
" J W rt 4 bx 353
" John B jr rt 4 bx 386
" Silvy rt 4 bx 453
Maglio G rt 3 bx 330
Magnuson J rt 1 bx 323
" John rt 6 bx 96
" Mabel rt 6 bx 96
" Nellie rt 6 bx 96
" Teleithe rt 6 bx 96
Magre T rt 1 bx 649
Maguire E M Mrs rt 4 bx 74n
" F D rt 4 bx 74n
Maher Cora rt 4 bx 12b
" John J rt 4 bx 12b
" Mary J Mrs rt 3 bx 48
Main Elida rt 2 bx 77
" H O rt 6 bx 11
Maine Wm (Elida) rt 2 bx 77
Mallory W B (Carrie E) rt 4 bx 373
Malstrom A Mrs rt 3 bx 9L
" Chas rt 3 bx 9L
Malto Delphine rt 3 bx 33
Manchester C D rt 2 bx 906b
" Maud Mrs rt 2 bx 906b
Mandras A rt 4 bx 1330
Manke Gus rt 4 bx 56s
Mann H C rt 2 bx 69
" Iva rt 2 bx 69
" Lorraine rt 2 bx 69
Manning Kenneth (Hazel) rt 5 bx 738
" Ahos rt 5 bx 17
Manthey Erma rt 1 bx 940
Manzo J rt 4 bx 1325
Mapes A Eug rt 4 bx 225
" Carol B rt 4 bx 225
Maple L P rt 2 bx 73f
Maragliano Antonio rt 3 bx 95
" Frank rt 3 bx 22L
" T rt 4 bx 147
Marain J H (Goldie) rt 3 bx 47q
Marayone Carlo rt 3 bx 107a
Marchesotti Jos rt 2 bx 505
Marchetti J rt 1 bx 820
Marchioli A rt 4 bx 40c
Marchissia Egnazio (Elsa) rt 5 bx 12
Mareign Eva rt 3 bx 47s
Marengo A L jr rt 2 bx 282a
" Aug rt 2 bx 282
" Louis (Vera) rt 5 bx 35
Mareno Tibusio rt 4 bx 1050
Margason Chestre J (Alice J) rt 4
bx 151
" John M rt 4 bx 68w
" Martha Mrs rt 4 bx 68w
Margelin Jos rt 4 bx 27g
" Susana rt 4 bx 27g
Margenstein H Stella rt 3 bx 50q
Margie G rt 1 bx 398
Mariano Ralph rt 1 bx 59
Marimka K rt 3 bx 89a
Marino Michl rt 2 bx 906
Mark H rt 1 bx 950
Marks Adolph (Elsie) rt 5 bx 65
Marones Chas rt 3 bx 50ec
Marr Wilbur rt 5 bx 80
Marrani J rt 5 bx 427
Marsiano Amelia Mrs rt 4 bx 170
" David rt 4 bx 179
" S J rt 4 bx 179
Marston Clifford A rt 2 bx 144
" Ernest A rt 2 bx 144
" G R rt 2 bx 144
" J E Mrs rt 2 bx 144
" Robt L rt 2 bx 144
Martigney Manuel rt 3 bx 50c
Martin A C (Isabella) rt 3 bx 8h
" A L rt 2 bx 567
" A P (Alice I) rt 3 bx 444
" Abe rt 3 bx 473
" Alma M rt 4 bx 16j
" Antonio rt 5 bx 101
" Annie rt 6 bx 212d
" Benj F rt 4 bx 16j
" Bros rt 5 bx 101
" C rt 6 bx 237a
" Clifford rt 1 bx 343
" Frank R (Evelyn) rt 5 bx 101
" Gerald E rt 4 bx 16j
" H rt 2 bx 273
" J A rt 4 bx 16
" J B rt 1 bx 799
" J H rt 3 bx 168
" Jas F rt 3 bx 25cc
" John J rt 1 bx 592a
" L rt 1 bx 298
" Leslie N rt 5 bx 85
" N J (R S) rt 3 bx 52s
" W M r tl bx 799
Martinez C rt 4 bx 34
" John rt 2 bx 284f
" Julia rt 2 bx 311
" Mary rt 2 bx 311
Martinoni Jos rt 4 bx 340
Martz B rt 5 bx 161
Masai Geo rt 1 bx 804
Masman Dorris rt 3 bx 8a
Mason Bruce L rt 2 bx 203
" C S rt 1 bx 746
" Donald rt 2 bx 203
" Francis V Mrs rt 2 bx 203
" Gene rt 2 bx 921d
" M E rt 3 bx 142a
" Mary M rt 2 bx 203
" W E rt 2 bx 110b
Mastanich M rt 1 bx 679
Mastel John rt 2 bx 865
" Mary rt 2 bx 865
Masters E Mrs rt 3 bx 47n
Masturzo Edw rt 3 bx 23
Matheny G T rt 2 bx 273
Mathes Dan rt 1 bx 506
Mathews C E rt 2 bx 202a
" C E rt 2 bx 965b
Matsumoto Edw rt 3 bx 61
Matt Bertha M rt 2 bx 874
" John G rt 2 bx 874
Matteson A E rt 4 bx 317
Matthews L rt 6 bx 219b
" Marjori rt 3 bx 8f
Mattiola Frank rt 2 bx 118x
" Louna rt 2 bx 904a
Mattish Frank rt 4 bx 32
Mattley Pearl rt 4 bx 135
Mattos J rt 6 bx 119
Mauro G E Mrs rt 6 bx 199
" Salvador rt 6 bx 199
Maxwell H S rt 4 bx 399
" Jennie rt 2 bx 967
" Vera rt 2 bx 958
May J A rt 4 bx 41
Mayes John rt 1 bx 675
Maynard Rose Mrs rt 5 bx 795
" T J rt 5 bx 795
Mayo L rt 3 bx 398
Mayses Vern rt 3 bx 7w
Mazzanti A rt 5 bx 188
McAdams Margt rt 4 bx 419
" Myrtle rt 2 bx 158
McAfee C M rt 1 bx 432
McAlexander G rt 1 bx 414
" H rt 1 bx 414
McAllen W D rt 1 bx 847
McAuliffe B C rt 3 bx 6r
McBath Alex rt 3 bx 399
McBride Chas rt 1 bx 282
" Clara Mrs rt 1 bx 282
" Harold rt 1 bx 282
" John F rt 3 bx 47h
" Lloyd rt 1 bx 282
" Ralph rt 1 bx 282
" Sidney rt 1 bx 542
McCafferey Margt rt 3 bx 169a
McCall M L (Ellen) rt 3 bx 176
McCann Sarah rt 2 bx 140f
McCardle J W rt 3 bx 43j
McCarter Henry M (Harriet) rt 1 bx
285
McCarthy Alvin A rt 3 bx 472a
" B J rt 1 bx 571
" Norma rt 4 bx 74p
" R E rt 3 bx 52g
McCauley P E rt 6 bx 62
" R E rt 2 bx 62
McClain rt 1 bx 965
McClaine Saml rt 4 bx 427
McCloud J S rt 2 bx 110d
McComb A C (M W) rt 3 bx 36h
McCombs A F rt 5 bx 790
" Emmett J rt 1 bx 774
McConnell Mary E rt 1 bx 55
" O M rt 1 bx 55
" R B rt 1 bx 55
" Walter E rt 4 bx 18g
McCorkle B T rt 2 bx 488
McCormack M J Mrs rt 1 bx 440
McCoy C M rt 1 bx 765
" Clarence rt 2 bx 755a
" E J rt 1 bx 755a
" Eliz Mrs rt 1 bx 755a
" & Son rt 1 bx 755a
McCraney Annie rt 4 bx 56n
" Robt rt 4 bx 56n
McCreary C S rt 4 bx 86
McCristian Will rt 2 bx 905
McCurdy Saml S (Mamie) rt 5 bx 96
McCutecheon Bert J rt 4 bx 15
" Peter J rt 4 bx 15a
" Veda rt 4 bx 15a
McDaniel Carl rt 5 bx 463
McDarman Mrs rt 4 bx 29
McDermott J L rt 2 bx 99
McDonough Pat rt 5 bx 15a
McDowell Annie rt 2 bx 500
" C A rt 3 bx 47
" Wilson rt 2 bx 500
McEneamy A E rt 2 bx 276f
McEney Alice rt 2 bx 115b
" F J rt 2 bx 115b
" Hazel rt 2 bx 115b
McFarland M W rt 2 bx 40g
McGeorge Floyd rt 1 bx 8
" L F rt 1 bx 8
" Lucille rt 1 bx 8
McGhaney E rt 5 bx 708
McGhee Lucille rt 3 bx 11d
McGill A F rt 2 bx 992
" Earl rt 1 bx 518
McGillvary H J rt 1 bx 814
McGlothlen Evelyn Mrs rt 4 bx 1200
McGregory W G rt 3 bx 47s

- McGrotty T J (Cecilia) rt 3 bx 455
 McGugin L T rt 2 bx 118
 " R M Mrs rt 2 bx 118
 McHugh Arth rt 1 bx 727
 " Tony rt 2 bx 273
 McIlvain Richd rt 1 bx 582
 McIntire Chas E rt 1 bx 297
 McInosh Danl J rt 4 bx 465
 McIntyre I D (Mabel) rt 5 bx 461
 " Mayme rt 3 bx 26aa
 McKelvey Jas C rt 2 bx 273
 McKinsey J T rt 2 bx 921
 McKinley Frank rt 3 bx 6j
 McKinsey C H Mrs rt 4 bx 2a
 McMichael Waldine rt 4 bx 1388
 McMillian John (May) rt 3 bx 10h
 McMurray Ethel rt 2 bx 280
 " Wm rt 2 bx 280
 McNeil Wm H (Eunice H) rt 3 bx 416
 McNorley David rt 1 bx 732
 McQueen Ethel rt 2 bx 889
 " Ruth rt 2 bx 889
 McSwan H A rt 4 bx 1280
 " M H rt 4 bx 1280
 McTeer M C rt 1 bx 610
 McVicker J W rt 6 bx 162
 Mead E L rt 1 bx 561g
 Mead Howard rt 4 bx 57m
 " L F rt 4 bx 57m
 " M E Mrs rt 4 bx 57m
 " Roy rt 4 bx 57m
 Mealley Mary Mrs rt 2 bx 910
 " Patty rt 2 bx 910
 Mease Sarah D Mrs rt 2 bx 122e
 Mecum I D Mrs rt 4 bx 465
 Medford Ed rt 2 bx 881
 " Garland M rt 2 bx 25
 " Vida E rt 2 bx 25
 Medina Frank rt 3 bx 103
 " Jos rt 3 bx 103
 Medrans Alfonso rt 4 bx 1050
 Megini Silvey rt 3 bx 58g
 Mehaffy Martha Mrs rt 4 bx 178
 " R C rt 4 bx 178
 Meier Carl rt 4 bx 53g
 " L R rt 2 bx 128d
 Meller G H rt 3 bx 144
 Mello America (Marian) rt 5 bx 110a
 " John (Rose) rt 5 bx 23
 " Manuel rt 4 bx 174a
 Melton C R rt 2 bx 985
 Melville Arth R rt 4 bx 18v
 " Jack E rt 4 bx 18v
 " Margarette Mrs rt 4 bx 18v
 " Robt (Harriet) rt 3 bx 90
 Mendes E rt 3 bx 25e
 Mendoza Juan rt 4 bx 1050
 Menicucci P rt 1 bx 713
 Mentger Roy rt 4 bx 443
 Mercer E J rt 5 bx 99
 " Walter W rt 2 bx 142
 Merchant Robt rt 3 bx 2b
 Merchasin Louie rt 2 bx 990
 " Max rt 2 bx 990
 " Nathan rt 2 bx 990
 " Rose rt 2 bx 990
 " Sarah rt 2 bx 990
 Mercocus Floyd rt 1 bx 329
 Meredith H B rt 2 bx 282h
 Merlo Angeline Mrs rt 2 bx 232
 " Angelo rt 3 bx 4x
 " Carlo rt 1 bx 703
 " Emile rt 2 bx 232
 Mermontes Pablo rt 5 bx 177
 Merrill A O Mrs rt 3 bx 501
 " C A rt 3 bx 179
 " Effie Genl Del
 " Fred C Genl Del
 " J L (Carrie) rt 1 bx 21
 " Margt Genl Del
 Merritt I G rt 3 bx 47f
 " R rt 3 bx 47f
 " Richd rt 5 bx 106
 Merry John rt 2 bx 273
 Messer Earl rt 6 bx 105
 " Eugene rt 6 bx 105
- Messer Henry rt 6 bx 105
 " Malvin rt 6 bx 105
 Messick Louise (Margt) rt 5 bx 532
 Metcalf Don Lee rt 4 bx 70
 " Harold rt 4 bx 70
 " Lionel rt 3 bx 2f
 " O M rt 4 bx 70
 " Vina Mrs rt 4 bx 70
 Meth O W rt 3 bx 470
 Mettler Fred M (Pauline) rt 5 bx 89c
 Metzler C J rt 2 bx 228
 Mengleany M rt 3 bx 23b
 Meyer Alice rt 2 bx 485
 " C A rt 2 bx 485
 " J G rt 1 bx 439
 " Leland (Abbie) rt 5 bx 262
 " Mary rt 3 bx 47f
 " S M rt 4 bx 15k
 Meyers Clara rt 2 bx 233k
 " Gertrude Mrs rt 1 bx 213
 " Herman rt 2 bx 233k
 " Jake rt 1 bx 50
 " L rt 4 bx 130
 Meyling L Mrs rt 3 bx 50
 Meyn Edwin J rt 4 bx 56t
 " Emily Mrs rt 4 bx 56t
 Meza Anthony rt 3 bx 443
 Michelotte B rt 3 bx 70
 Michelotti A rt 5 bx 3
 Michels Thelma rt 3 bx 9n
 Michner Walter E rt 6 bx 441
 Middleton Josephine rt 4 bx 52k
 Mignacco Armando rt 4 bx 230
 " Ernest rt 4 bx 230
 " Louise rt 4 bx 230
 Milamo Dominico rt 4 bx 407
 Millen H rt 4 bx 56e
 Miller Ada L rt 2 bx 174
 " Albt rt 5 bx 14a
 " Chas H rt 4 bx 43y
 " David rt 4 bx 367
 " E J rt 3 bx 64
 " E L rt 3 bx 7w
 " E M Mrs rt 6 bx 277
 " Edna E rt 2 bx 930
 " Ellen E Mrs rt 4 bx 43y
 " Geo rt 6 bx 161
 " Geo A rt 5 bx 13
 " Geo L rt 2 bx 174
 " Gladys E rt 2 bx 115a
 " H C rt 2 bx 273
 " Hubert D rt 4 bx 43y
 " J E rt 1 bx 190
 " J L rt 3 bx 76
 " L C rt 1 bx 54
 " L C rt 1 bx 562
 " L Corwin rt 2 bx 115a
 " Loring E rt 2 bx 115a
 " Mary A rt 2 bx 930
 " Ned C rt 1 bx 533
 " Oliver rt 5 bx 789
 " Sally rt 1 bx 180
 " Sam (Elva) rt 3 bx 25dd
 " Theresa rt 1 bx 533
 " V E rt 3 bx 55
 " V R rt 3 bx 12k
 " W A rt 2 bx 930
 " W Franklin rt 4 bx 43y
 Millien H T rt 4 bx 56e
 Milligan Emma B rt 2 bx 492f
 " John P rt 3 bx 8f
 " M rt 6 bx 186
 " S A Mrs rt 2 bx 54
 " Thos rt 2 bx 41
 Millin Albt H rt 6 bx 450
 " Ellis rt 6 bx 450
 Miltzan Conrad rt 3 bx 7a
 Minahen T H rt 4 bx 1443
 Minasoli Joe rt 5 bx 21
 Mindaeh Cath rt 4 bx 25a
 " F C rt 4 bx 25a
 " Richd rt 4 bx 25a
 Miner A E rt 4 bx 27
 " Callie Mrs rt 4 bx 30
 " Loyal E rt 4 bx 30
 " R L rt 4 bx 30
 Mini Wm (Addie) rt 5 bx 266
- Miniaci Louis rt 6 bx 436
 Minkler D H rt 1 bx 244
 Minaken A L rt 4 bx 315
 Mintun Roy A rt 3 bx 59c
 Minteenk Harry E (Alta) rt 3 bx 59c
 Minoveich Martin rt 5 bx 245
 Mitchel Roy C rt 4 bx 336
 Mitchell Barton Mrs rt 4 bx 216
 " Donald B (Bernice) rt 4 bx 216
 " Earl J rt 4 bx 216
 " Steve rt 4 bx 449
 Mitsuda I rt 4 bx 456
 Moad D A rt 1 bx 656
 Mobley Minnie Mrs rt 4 bx 1320
 " W D rt 4 bx 1320
 Moccafish Antonio rt 3 bx 362
 Modern Cleaners rt 4 bx 2k
 Modica C rt 3 bx 172a
 Modlin Gertrude Mrs rt 5 bx 601
 " Karl rt 6 bx 177
 " M rt 6 bx 177
 " Thos rt 5 bx 433
 " Wm rt 5 bx 601
 Moe A L rt 6 bx 2
 Moers Edw rt 3 bx 1d
 Molen Henry C rt 5 bx 193
 Molina J G (Maclovia) rt 5 bx 426
 Molinari A B rt 2 bx 540
 " Erichetta rt 2 bx 540
 " Jack rt 2 bx 540
 " P rt 2 bx 546
 " Pete rt 2 bx 540
 Molini C rt 2 bx 149a
 Mollen Henry E rt 4 bx 110d
 Moller Niels rt 5 bx 26
 Molles Manuel rt 4 bx 171
 Momi P (Annie) rt 1 bx 61
 Monaghan L P rt 2 bx 230a
 Moniz Tony rt 5 bx 167
 Monroe Orchard rt 4 bx 1394
 Montallo G rt 3 bx 95j
 Montanya Roy rt 6 bx 226
 Montgomery rt 4 bx 131a
 Moody Bertha rt 1 bx 352
 Moor Rosie rt 4 bx 34b
 Moore A W rt 4 bx 380
 " Alfd F rt 6 bx 176
 " Aubrey rt 2 bx 965a
 " C W rt 5 bx 99
 " Earl rt 1 bx 68
 " Edw (Grace) rt 1 bx 208
 " Ett art 2 bx 296p
 " F B rt 4 bx 380
 " Fay rt 2 bx 965a
 " Francis rt 2 bx 965
 " Helen rt 2 bx 965a
 " Homer (Irene) rt 1 bx 920
 " Jas H rt 4 bx 39w
 " John E (Bessie) rt 1 bx 528
 " Max (Pearl) rt 1 bx 545
 " T E rt 5 bx 30
 " Thos E (Alfreda) rt 5 bx 19
 " W J rt 4 bx 39w
 " Wm P rt 2 bx 296p
 Moraign Ervia rt 4 bx 40d
 Moran Aileen rt 2 bx 906a
 " Caroline rt 5 bx 150
 " J E Mrs rt 5 bx 150
 " Sherd (Zeta) rt 5 bx 159
 Moranda C C (Rosie) rt 5 bx 80b
 Moravek J rt 6 bx 224
 Mordegia J rt 1 bx 844
 Mordign John H rt 4 bx 40d
 Morency R G rt 1 bx 553
 Morenzoni Henry M rt 5 bx 284
 " P D rt 6 bx 16
 Moresco Edith Mrs rt 2 bx 329
 " Louis rt 2 bx 329
 " Roy rt 2 bx 326
 Moresino M rt 3 bx 327b
 Morey Eliz M rt 4 bx 35
 Morf Edmund rt 4 bx 291
 " Jacob rt 4 bx 291
 Morgan J T rt 2 bx 206
 " Jewel M rt 2 bx 976
 " Jos rt 2 bx 906
 " Jos T rt 4 bx 42c



STOCKTON CITY LAUNDRY PARISIAN CLEANERS

Established 1873

Telephones 94 and 95

22 N. GRANT STREET

STOCKTON, CALIFORNIA

STOCKTON RURAL ROUTES (1935)

567

- Morgan Leola rt 2 bx 976
" Margt rt 2 bx 206
" Merlin rt 1 bx 165
" Milton rt 2 bx 976
" Orris rt 1 bx 165
" Ray rt 2 bx 976
" S H rt 4 bx 64a
Morgenson Dana C rt 2 bx 80a
" Esther rt 2 bx 80a
Morikami S rt 2 bx 247
Morita S rt 2 bx 521
Morningside Farm rt 4 bx 438
Moroni Emilio rt 6 bx 404
" Emma rt 6 bx 404
" Gino rt 6 bx 404
" Guido rt 6 bx 404
Morosini O rt 4 bx 145
Morris Florence I Mrs rt 2 bx 861
" Frank Mrs rt 1 bx 561f
" Minnie rt 1 bx 755
" Wm rt 6 bx 426j
Morrison Geo K rt 4 bx 58
" Lester rt 4 bx 58
" N A rt 4 bx 274
" Wesley rt 4 bx 58
Morrow John W rt 4 bx 136
" Ruth B rt 4 bx 65
Morse Raymond (Lola) rt 5 bx 438
Mortimer Ella rt 2 bx 972
" Jas F rt 2 bx 972
Moshier E rt 5 bx 10
" Geo (Martha) rt 1 bx 763
Mosi T rt 4 bx 439
Motta A rt 2 bx 232
Mouga Jos rt 3 bx 50cc
Mountz Paul A rt 1 bx 54
Mournian Aaron D rt 4 bx 183
" Agnes J Mrs rt 4 bx 183
" Thos (Harriet) rt 5 bx 191
Mowrey Walter J (Mary H) rt 5 bx 41
Moxley Bruce Genl Del
" Fred rt 3 bx 443
" Ruth Genl Del
Mueller Irene rt 6 bx 440
" Theo rt 6 bx 440
Muhs Julius rt 5 bx 211
" Martin rt 5 bx 211
Mujio L rt 3 bx 1
Mulks Chas rt 2 bx 128e
Mullally John L (Maybelle) rt 5 bx 193
Muller Albt (Gertie) rt 5 bx 194
" Bros rt 5 bx 194
" Christian rt 4 bx 1340
" Detleb (Louise) rt 5 bx 95
" Frank rt 1 bx 459
" Herman (Jessie) rt 5 bx 249
" Otto F rt 5 bx 271
Mullins Altha rt 4 bx 89
Mulvaney Jos rt 1 bx 358
Munch I C rt 1 bx 40
" Wm rt 3 bx 3a
Munger Ralph rt 3 bx 436
Murakami Fukuichi rt 4 bx 309
Murakami J rt 2 bx 324e
Murat Frank rt 1 bx 688
Murato M rt 4 bx 185
Murdoek B rt 3 bx 59
Murphy C A rt 2 bx 905
" Doris G rt 3 bx 44
" H B rt 1 bx 734
" J M rt 6 bx 116
" Jas rt 2 bx 322
" Jas Mrs rt 1 bx 734
" John rt 3 bx 20g
" Jos rt 2 bx 77
" Lottie E rt 1 bx 734
Murray Eleanor rt 5 bx 228
" Victor rt 2 bx 60
Musso Berto C rt 1 bx 676
Musto Geo rt 3 bx 315
Muthel Chas C rt 2 bx 275b
" Clara rt 2 bx 275b
Muzio Ernest R rt 4 bx 54f
" Mary W rt 4 bx 54f
Muzzio Dellas rt 4 bx 117
" John rt 4 bx 117
Myers Evelyn rt 4 bx 130
" L rt 4 bx 130
Nadotti Luigi (Marie) rt 5 bx 295
Nadotti L rt 4 bx 94
" P rt 4 bx 97
" T rt 1 bx 779
Nagasako Yatano rt 1 bx 493
Nagata K G rt 4 bx 97a
Nagel R G rt 2 bx 911a
" Sylvia rt 2 bx 911a
Nakagawa T rt 6 bx 265
" V K rt 6 bx 265
" Y rt 1 bx 786
Nakahara B K rt 4 bx 474
Nakamura N rt 4 bx 474
Nakatsui Y rt 6 bx 265
Naraquki F rt 6 bx 212
Nashimoto K rt 6 bx 305
Nason Beth rt 1 bx 751
" Edith C rt 2 bx 862
" Edwin B rt 2 bx 862
" Jas D rt 2 bx 862
" Normel rt 2 bx 862
" Robt rt 2 bx 862
" Wm D rt 2 bx 862
" Winfield rt 2 bx 862
Nassano A J rt 1 bx 789
" Angelina rt 1 bx 789
" Edith rt 1 bx 789
" Jos rt 1 bx 789
" Kate Mrs rt 1 bx 789
" Louis rt 1 bx 789
Natali Laud A rt 5 bx 72
Natola B rt 3 bx 71
Natoli F rt 1 bx 55r
Natural Milk Producers Assn of Calif rt 2 bx 322
Nauman Lenn A rt 4 bx 1190
" Levi E rt 1 bx 1190
" W E rt 4 bx 1190
Nave H E rt 4 bx 27
" J E Dr rt 4 bx 27
" M rt 1 bx 633
" P O rt 1 bx 771
Navone A G rt 3 bx 293½
" Jennie E rt 3 bx 390
" Victor rt 3 bx 47r
Neal Betty rt 4 bx 1400
Nedrow Blanche rt 2 bx 916
" H M rt 2 bx 916
" Jas rt 2 bx 916
Needham Clyde W rt 4 bx 219
" Ruth rt 4 bx 46½
Neely J L rt 2 bx 273
Negro V rt 2 bx 280b
Neil Jack rt 2 bx 923
Neilan Jas D rt 2 bx 322
Nelson Alfd C rt 4 bx 50y
" Chas A rt 1 bx 612e
" Edna R rt 3 bx 6h
" Elsworth P (Elsie) rt 5 bx 192
" Geo rt 1 bx 212
" H W rt 1 bx 81
" Hans S rt 4 bx 17a
" Ivan E rt 5 bx 747
" Minerva rt 5 bx 231a
" N J (Clara) rt 3 bx 11s
" Ray (Gladys) rt 3 bx 22k
Nelson Ruth Mrs rt 5 bx 747
Nesbit Anna rt 2 bx 972
" John rt 2 bx 972
" Victor rt 2 bx 972
Netz Alvin E (Viola) rt 5 bx 749
Neu Bertha rt 6 bx 159
Neugebauer Chas (Sophie) rt 5 bx 81a
" Fred (Bernice) rt 5 bx 84a
Neuman Wm rt 3 bx 1c
Neusome Chas P rt 2 bx 59c
Newberry R M rt 2 bx 950
Newell Carrie M rt 4 bx 438y
" Elgin R rt 4 bx 438y
" Ernest E rt 4 bx 438y
" Henry L rt 4 bx 438y
" Marvin H rt 4 bx 438y
Newman Edw rt 4 bx 418
" Sarah rt 3 bx 22r
" T rt 5 bx 800
Newmann Frances E Mrs rt 2 bx 276a
" Henry A rt 2 bx 276 a
Newton Albt rt 3 bx 47f
" R W rt 1 bx 460
Neyeo G rt 4 bx 162
Neyman John A rt 1 bx 46
Niblock Alfd rt 3 bx 22g
Nichols D J rt 3 bx 470x
" Roy rt 4 bx 46v
Nicholsen Robt rt 4 bx 247
Nicholson C rt 2 bx 273
" N A (Arletha) rt 4 bx 247
" Robt rt 4 bx 247
Nichley Jas J (Agnes) rt 5 bx 732
Nickley D E rt 6 bx 16
Nicklin C W rt 4 bx 1410
Nicks Jean Y rt 1 bx 940
Nicora Dave rt 3 bx 365
Niello C rt 3 bx 363
Nielsen Carl rt 2 bx 68
Nil W rt 6 bx 311c
Nishi S rt 3 bx 361
Nishimoto Y rt 4 bx 190
Nishimura I rt 6 bx 324
" Wm rt 6 bx 324
Nissen Beulah rt 3 bx 428g
Nitta S rt 4 bx 491
Nobis Edw rt 1 bx 625
Noble Alden E rt 2 bx 282a
" B H rt 4 bx 217
" Glen A rt 2 bx 282a
" Helen rt 4 bx 217
" Pearl Mrs rt 2 bx 282a
Noceti Antonio (Aurelia) rt 6 bx 345
Nocetti Edith Mrs rt 3 bx x99b
Nogari S D rt 3 bx 114½
Nogles S E rt 5 bx 530
Nojiri Hideko rt 6 bx 322
" Sunio rt 6 bx 322
" Tama rt 6 bx 322
" V rt 6 bx 322
Nolli L rt 4 bx 91
Nomellini A rt 4 bx 261a
Nonaka M rt 6 bx 242
Nonella Frank rt 3 bx 2d
Nordstrom N O rt 4 bx 135
Normellini E rt 2 bx 18
Norris Jack Genl Del
" Ruth rt 3 bx 47s
North A E rt 1 bx 66
Norton Gus rt 3 bx 48d
Nostrand Margt rt 2 bx 153
" V M rt 2 bx 153
Novotiny G C rt 6 bx 427
Noyes M T rt 3 bx 294½
Nuehols Ernestine Mrs rt 2 bx 61
" Jas rt 2 bx 61
Nunes Josephine Mrs rt 2 bx 943
" Lawrence rt 2 bx 943



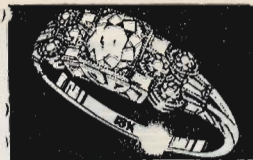
WE BUY OLD GOLD AND PAY CASH

PESCE & CO.

"CREDIT JEWELERS"

211-213 E. WEBER AVENUE, STOCKTON

TEL. 256



568

(1935) R. L. POLK & CO'S

Nunes M F rt 2 bx 943
 " Manuel rt 5 bx 78
 " Wm W rt 2 bx 943
 Nunley R rt 3 bx 58
 Nunn T S rt 2 bx 182
 Nye Byron L rt 2 bx 527
 Oac G rt 4 bx 198
 Oak Grove Dairy rt 2 bx 860
 O'Brien Bernice rt 6 bx 189
 " Elsie rt 6 bx 189
 " Frank rt 6 bx 189
 O'Connor B rt 1 bx 621
 O'Day Ruby rt 2 bx 899
 Odell Harvey C rt 6 bx 229
 " Harvey M (Susan) rt 6 bx 229
 Oder Ray rt 1 bx 736
 O'Donnell F J rt 1 bx 653
 " M J rt 1 bx 359
 Odor E S rt 5 bx 506
 Ogden G F rt 4 bx 488
 Ogden John P rt 6 bx 123a
 Ogles Chas H rt 6 bx 127
 O'Hara Josephine rt 4 bx 16
 Ohles Saml rt 6 bx 450
 Ohlsen Wm rt 4 bx 81b
 Ohm Geo (Dora) rt 5 bx 258
 " Peter (Telshe) rt 5 bx 276
 " Peter jr (Florence) rt 5 bx 272
 Okuyama D rt 4 bx 54r
 Okuyam D rt 4 bx 54r
 Oldfield Annie rt 2 bx 28
 " Robt rt 2 bx 28
 Olds Earl rt 2 bx 69
 " Francis rt 2 bx 69
 " Jessie rt 2 bx 69
 Oliver David O rt 2 bx 857
 " John B rt 2 bx 857
 " Roxie rt 2 bx 857
 " W D rt 2 bx 857
 " W Thos rt 2 bx 857
 Ollman Fred (Minnie) rt 5 bx 69
 Olney Alvin E rt 1 bx 87
 Olsen E R rt 3 bx 50b
 " Jas rt 5 bx 211
 " O C rt 6 bx 121
 Olson Alfd rt 1 bx 110
 " C B rt 1 bx 110
 O'Neal P P Mrs rt 1 bx 513
 " Paul rt 5 bx 721
 Oneto John W rt 3 bx 4
 Ono G rt 4 bx 494
 Ori I rt 4 bx 52w
 Origone Amelia rt 1 bx 841
 " G B rt 1 bx 841
 " Mary rt 1 bx 841
 Oriro Keith (Betty) rt 3 bx 1b
 Oro Theo rt 1 bx 515
 Orr Millie Mrs rt 2 bx 881
 " Minnie rt 3 bx 58j
 Osborn F J (Regina) rt 5 bx 544
 " Geo rt 2 bx 60a
 " H R rt 4 bx 56v
 " Laverne rt 4 bx 1382
 " Orrin rt 4 bx 265
 " Printing Co rt 4 bx 56v
 Osborne C A (Esther) rt 3 bx 292
 " Geo rt 2 bx 273
 Osbourn Eva Mrs rt 2 bx 278
 Oschner Jos F rt 3 bx 43
 Ospital Estefano rt 5 bx 731
 Ost J rt 1 bx 100
 " Lucy rt 6 bx 378
 Osterman M rt 1 bx 34
 Oswalt Joe (Agie) rt 6 bx 196d
 O'Toole John J rt 4 bx 438
 " Michl rt 4 bx 438
 Ott Allen rt 6 bx 320
 " Barbria rt 6 bx 320

Ott E Y Dr rt 6 bx 318h
 " Fred W rt 6 bx 320
 " Martin rt 6 bx 320
 " Minna rt 6 bx 318h
 Ottaborne Marco rt 3 bx 172b
 Ottone V rt 4 bx 162
 Overgard E rt 3 bx 309
 Overmyer C J rt 4 bx 452
 " Wm rt 6 bx 197
 Owen Aaron rt 4 bx 112
 Owen Everett rt 3 bx 2c
 " G H rt 4 bx 66½
 " Maurice rt 2 bx 122b
 Owens L R Mrs rt 3 bx 27p
 Owning L B rt 4 bx 323
 Oybagery J B rt 1 bx 253
 Oyler Jas rt 1 bx 678
 Pace Shirley E rt 2 bx 153
 Padgett Wm rt 4 bx 1150
 Page B L (Mary) rt 3 bx 47e
 " Carolyn L rt 4 bx 1460
 " W F rt 3 bx 64g
 Pagel Eleanor rt 5 bx 196
 " Fred rt 5 bx 196
 Paget R W rt 3 bx 47kk
 Pagnueski L (Carrie) rt 3 bx 115
 Pagnucci E (Nellie) rt 5 bx 225
 Paita Wm (Clara) rt 3 bx 44a
 Palmer Francis rt 1 bx 72a
 " John rt 3 bx 57
 " L rt 3 bx 27p
 " Lizzie Mrs rt 2 bx 118d
 Pama Susie rt 3 bx 70
 Pambianco S J rt 4 bx 155
 Panero Jas P rt 4 bx 1441
 " John L rt 4 bx 1441
 Pantelopoulas P H rt 4 bx 417
 Papadakis John rt 2 bx 273
 Paravagna John rt 6 bx 191
 Pardini Adam rt 3 bx 89
 Pardini M M rt 5 bx 226
 Parish Norman rt 3 bx 179
 Parker Clare J V rt 2 bx 273
 " Clarence rt 2 bx 278
 " E Mrs rt 6 bx 400
 " E E rt 4 bx 67x
 " Edwina W Mrs rt 2 bx 278
 " Eldon rt 4 bx 75
 " John rt 2 bx 58c
 " Merle rt 2 bx 278
 " Rollo C rt 2 bx 278
 " W B rt 3 bx 174
 Parks N H rt 6 bx 162
 " S I rt 4 bx 191
 " Vernon L rt 3 bx 445
 Parr C L Mrs rt 5 bx 443
 Parras Pedro rt 4 bx 1050
 Parson E E rt 6 bx 124
 " G W rt 4 bx 42b
 " M E Mrs rt 4 bx 42b
 Parsons B T rt 4 bx 305
 " Della rt 4 bx 305
 " J H rt 2 bx 273
 " Leslie rt 4 bx 305
 Partridge Ira R rt 2 bx 987
 Pashonto F Mrs rt 6 bx 213
 Paslick J H rt 4 bx 64j
 Pasquinin Duilis rt 3 bx 48k
 Passadore A rt 2 bx 520
 Passadore Edna rt 2 bx 519
 " L rt 2 bx 519
 " Maria rt 2 bx 520
 " Palmira rt 2 bx 519
 Passeggi Fred rt 4 bx 43
 " Gilbert rt 4 bx 43
 " Julian rt 4 bx 43
 " Lewis rt 4 bx 43
 Patten R A Mrs rt 3 bx 27

Patter Harry rt 3 bx 27d
 Patterson A H rt 2 bx 40a
 " Julia Mrs rt 2 bx 40a
 " M (Lillian) rt 3 bx 43d
 " Mary rt 3 bx 21
 " Wm rt 2 bx 40a
 " Woodrow rt 2 bx 40a
 Patzer A rt 1 bx 351
 Paul Eug rt 4 bx 18d
 " John rt 4 bx 18d
 Pauley Clifford rt 1 bx 1392
 Pauley Jos rt 4 bx 1392
 " Robt rt 4 bx 1392
 " S J rt 4 bx 1399
 Paulson H B rt 1 bx 561b
 Payolje Mike rt 5 bx 545
 Peacock L H rt 3 bx 60a
 Peak A J rt 4 bx 217
 Pearce J M rt 4 bx 15v
 " Lawrence rt 4 bx 15v
 Pearson A rt 3 bx 36bb
 " M L rt 1 bx 517
 Pease Velma Mrs rt 3 bx 7a
 Peck Elmore rt 6 bx 126
 " Jas rt 6 bx 126
 " John rt 6 bx 126
 " Wilma rt 6 bx 126
 Pedigo Bertha Mrs rt 4 bx 87
 " Emmett rt 4 bx 87
 " Newton A rt 4 bx 87
 " Ray rt 4 bx 87
 " Beece E rt 4 bx 87
 Pedrotti Peter rt 5 bx 115
 Pegg Coy rt 2 bx 59c
 Pegyane Harry rt 3 bx 509
 Peirano J rt 3 bx 25
 Pelanda Jas rt 4 bx 2a
 Peluso A rt 3 bx 43k
 Pemberton Frankie Mrs Geal Del
 Penaluna T C Mrs rt 3 bx 12c
 Penberthy J (Amy) rt 3 bx 22m
 Pendell L C rt 5 bx 84a
 Pendergrass Roy rt 3 bx 36j
 Pendro Nick S rt 3 bx 172
 Peninger Robt rt 3 bx 48
 " Robt rt 3 bx 51r
 Penland W P rt 4 bx 4260
 " W V rt 4 bx 4260
 Pepper Daisy rt 4 bx 156
 " F D rt 4 bx 63a
 Peppi T rt 3 bx 48b
 Peralta Paul rt 4 bx 66a
 Perazzo Julia rt 2 bx 555
 " Ollie rt 2 bx 555
 " P J rt 2 bx 555
 Percival L D Mrs rt 5 bx 750
 " L R rt 5 bx 750
 Perez E rt 2 bx 284
 " E A rt 6 bx 138
 " Jose rt 6 bx 138
 " Juan rt 6 bx 106
 " L rt 2 bx 284b
 " Virginia rt 6 bx 138
 Perkins A G rt 3 bx 60
 " Chas (Mercedes) rt 3 bx 60a
 " Nellie Mrs rt 2 bx 58c
 " S P rt 1 bx 429
 Permann Louis rt 2 bx 950
 Perondi Lawrence Mrs rt 1 bx 513
 Perry Clifford K rt 3 bx 299
 " Frank rt 4 bx 303b
 " Frank rt 4 bx 425b
 " Jos rt 4 bx 303b
 " Jos R rt 5 bx 102
 " Johanna rt 2 bx 889
 " John R rt 5 bx 102
 " Manuell F (Mary) rt 5 bx 94
 " Nancy Mrs rt 4 bx 519

- Perry Resort rt 5 bx 298
 Perzi G B (Colombo) rt 3 bx 6c
 Peschiera G rt 4 bx 85
 " John rt 4 bx 83x
 " Wm A rt 4 bx 83x
 Pesoida Joe rt 5 bx 719
 Peterman David rt 2 bx 164
 " Earl rt 2 bx 164
 " Ed H rt 2 bx 164
 " G rt 1 bx 813r
 " Hazel M rt 2 bx 164
 Peters Byron rt 6 bx 352
 " Frank rt 4 bx 393
 " Henry (Mary) rt 6 bx 426c
 " Wm rt 3 bx 43k
 Petersen Fred rt 4 bx 423
 " P J (Lillie V) rt 3 bx 122m
 " Peter rt 4 bx 423
 " Robt rt 4 bx 423
 " Theo rt 4 bx 423
 Peterson A W rt 2 bx 77
 " Alf rt 5 bx 180
 " Arth rt 2 bx 77
 " C Mrs rt 2 bx 127b
 " Clara rt 4 bx 1362
 " Ed T (Mary) rt 5 bx 125
 " Emil rt 5 bx 180
 " Eugenie rt 6 bx 291
 " Fred rt 1 bx 128
 " Geraldine r 42 bx 77
 " Gloria rt 2 bx 77
 " Jas C rt 4 bx 65a
 " Jas N rt 5 bx 493
 " Louis rt 4 bx 15n
 " R A Mrs rt 3 bx 8h
 " Ruth rt 5 bx 180
 " Theo rt 2 bx 996
 Petrequin Albt rt 2 bx 306
 " Irene rt 2 bx 306
 " Lillian rt 2 bx 306
 " Robt rt 2 bx 306
 Petri Angelo rt 3 bx 101
 Pettinari A rt 3 bx 105
 Pettingill A H rt 2 bx 564
 Petty G C rt 4 bx 134a
 Petzinger H A rt 3 bx 145
 Peyregne Albt rt 3 bx 446
 Pezzi F (Alice) rt 3 bx 296
 " G H rt 4 bx 84
 " Jos (Clara) rt 3 bx 46a
 Pfaff Frank rt 6 bx 443
 Pfister E W rt 4 bx 10
 Phelps J rt 5 bx 62
 Phifer Ardene rt 1 bx 708
 Phillips Lula J Mrs rt 5 bx 25
 " Richd rt 1 bx 90
 Phylis M rt 5 bx 67
 Platt W A (Edna) rt 6 bx 284
 Piazza Angelo rt 4 bx 308
 " E rt 4 bx 2fd
 " Silvio rt 4 bx 15a
 Piazzini Philip rt 3 bx 43k
 Piccardo Frank rt 4 bx 500
 Picchi Bros rt 5 bx 174a
 Piccoli A rt 3 bx 113
 Pickard J G Mrs rt 6 bx 122
 Pichenstein Stella rt 4 bx 1399
 Pidde Emil rt 2 bx 934
 Pierana M rt 3 bx 398d
 Pierce E P rt 2 bx 937
 " Helen F rt 2 bx 937
 " Henry I rt 2 bx 937
 " Mina A rt 2 bx 937
 " T E rt 4 bx 27c
 Pierrano Michel rt 3 bx 4a
 Pierson R E Mrs rt 5 bx 27
 Pigg Wm rt 2 bx 273
 Pinasco Bert rt 4 bx 42
 " Eug rt 4 bx 42
 " Mary rt 4 bx 42
 " Robt rt 4 bx 42
 " Steve rt 4 bx 5th
 Piombo R Mrs rt 2 bx 282a
 Piper Roy E rt 4 bx 63h
 Pippi S rt 3 bx 97
 Pisacco A rt 4 bx 500
 " B Mrs rt 4 bx 59
 Pita Antonio rt 5 bx 89
 Pitt L J Mrs rt 2 bx 885
 " Margt rt 3 bx 467
 Pittman W T rt 6 bx 177
 Pitto Lino (French) rt 5 bx 17a
 Pizzi Massini rt 3 bx 72½
 Platt Arth rt 4 bx 184
 Platto G rt 3 bx 96
 Platz Theresa rt 3 bx 164
 Plumb Frank L rt 4 bx 303
 Plumb Ralph A rt 4 bx 303
 " Roy H rt 4 bx 303
 Plumlee E F rt 2 bx 273
 Podesto rt 4 bx 66
 " A rt 1 bx 798
 " A B rt 2 bx 496
 " D rt 2 bx 261b
 " D rt 3 bx 323g
 " E rt 1 bx 797
 " Emil rt 1 bx 724
 " Fred rt 3 bx 332
 " G rt 3 bx 328
 " G F rt 1 bx 778
 " Giacomo rt 4 bx 203
 " L rt 4 bx 115
 " Maria rt 1 bx 715a
 " Mario rt 4 bx 203
 " Mary rt 2 bx 519
 " Nellie rt 2 bx 496
 " Tony rt 4 bx 115
 Poe Genevieve rt 3 bx 48
 " Wm (Genevieve) rt 3 bx 51r
 Poggio Jos (Stella) rt 3 bx 67
 Pohle J W rt 2 bx 904b
 Pohleman H C rt 1 bx 168
 Ponetello T rt 3 bx 52w
 Pool Gertrude rt 2 bx 923
 " Kenneth rt 2 bx 923
 " Lewis rt 2 bx 923
 " M E rt 2 bx 923
 Poppewell A H rt 2 bx 869
 " Matilda C rt 2 bx 869
 Porobich Ardji rt 4 bx 44a
 " Dano rt 4 bx 44a
 " Mitar rt 4 bx 44a
 Porter A W Jr rt 4 bx 201
 " John L rt 6 bx 308
 " Marjoria R rt 6 bx 308
 " Neill rt 4 bx 201
 " R F (Nina E) rt 6 bx 308
 " Robt L rt 6 bx 308
 Portes A G rt 4 bx 417
 Potter Eliz rt 4 bx 132
 " J F rt 1 bx 593
 Potts Danl Rev rt 2 bx 991
 Poultry Supply Store rt 3 bx 47a
 Powell Adelaide W Mrs rt 2 bx 233L
 " B J rt 2 bx 233L
 " Betty B rt 2 bx 113
 " C J (Edna) rt 5 bx 63a
 " D A rt 5 bx 38
 " Danl rt 2 bx 113
 " Isaac rt 1 bx 623
 " Jas M rt 2 bx 113
 " Laverne rt 5 bx 38
 " Marvin rt 2 bx 113
 Powers Claude rt 4 bx 50v
 " Coda rt 1 bx 72
 " Emmett C rt 3 bx 29e
 " J D rt 4 bx 50v
 " Paul rt 4 bx 50v
 " Ray rt 1 bx 414
 " Robt rt 4 bx 50v
 " T E rt 4 bx 400
 " Thomas rt 4 bx 50v
 " W F rt 3 bx 36f
 Poyner Ida rt 4 bx 1150
 " J B Mrs rt 4 bx 1150
 " Jas D rt 4 bx 1150
 " Manie Mrs rt 4 bx 1150
 Prater Ben rt 1 bx 561e
 Prato A G rt 4 bx 1352
 " G B rt 1 bx 182
 " Jos A rt 4 bx 163
 Pratt M L rt 2 bx 983
 " Margt A rt 2 bx 983
 Pregno C J rt 6 bx 68
 Prehonen Jos (Mary) rt 6 bx 214
 Prentiss Jean rt 3 bx 26h
 Presto Alma C rt 1 bx 126
 " Jas (Olga) rt 3 bx 398f
 " John P rt 1 bx 126
 Preston Barbara rt 2 bx 230
 " Laboratories rt 3 bx 23w
 Prevo W H rt 5 bx 15
 Prewett A rt 1 bx 359
 Price Chas I rt 2 bx 566
 " E D rt 1 bx 534
 " G H rt 1 bx 158
 " Grant rt 6 bx 183b
 " Harold rt 2 bx 566
 " Herbt rt 2 bx 566
 " Lavini rt 2 bx 566
 " Vernon rt 2 bx 566
 Prichard M rt 2 bx 273
 Pride M S rt 1 bx 180
 Priest J A rt 6 bx 376
 " W H rt 6 bx 376
 Prince Evelyn Mrs rt 2 bx 249
 " J R rt 2 bx 164
 Pritchard H H rt 4 bx 1290
 Pritchett G O rt 2 bx 273
 Privara Frank rt 1 bx 760
 Privat Bernard rt 6 bx 264
 " Frank rt 6 bx 264
 " Hazel rt 6 bx 264
 " Rachel rt 6 bx 264
 " Richd rt 6 bx 264
 Proctor J E (Lula) rt 3 bx 50w
 Promos N rt 5 bx 16a
 Prouse Gus rt 1 bx 957
 Pruzzo Louis rt 2 bx 325
 Puccinelli Angelo rt 4 bx 322
 " Egizio rt 4 bx 322
 Pugh Hugh rt 4 bx 450
 Pulice John rt 3 bx 46a
 Puller Jessie L rt 3 bx 27k
 Pullos Thos rt 4 bx 417
 Puppo Amelia rt 2 bx 858
 " John rt 2 bx 858
 Purdy E N rt 1 bx 749
 Purinton Thos P rt 4 bx 63a
 Purity Beverage & Extract Co rt 4
 bx 65
 Qualls Oscar rt 4 bx 321
 Quartero F Mrs rt 5 bx 547
 Quaster W G rt 1 bx 626
 Quick Silas S rt 4 bx 139
 Quiloriano D rt 3 bx 94
 Quigley E W rt 3 bx 422
 " J G rt 1 bx 484
 " J W rt 3 bx 422
 Quimby J W rt 2 bx 987
 Quinn C H Mrs rt 2 bx 40p
 " Chas L rt 6 bx 440d
 " Nellie Mrs rt 2 bx 324
 " Thos T rt 2 bx 324
 Quinones Batris rt 4 bx 57a
 " Benj rt 1 bx 57a
 " Flavio rt 4 bx 57a
 " Virgil rt 4 bx 57a
 Quinto Ranch rt 2 bx 290
 Quipada Dave Mrs rt 3 bx 33
 Quyle J F rt 4 bx 18f
 Raber M E Mrs rt 6 bx 185
 " W H (Rose) rt 6 bx 185
 Radavero P rt 4 bx 167
 Rader W A rt 2 bx 273
 Radio Amateur W6EZF rt 4 bx 3r
 Radisch Herbt rt 4 bx 10
 Raffel Frank rt 1 bx 161
 Ragland J L rt 3 bx 46w
 Ramolo A rt 5 bx 92
 Ramsey Edith Mrs rt 2 bx 510
 Rana Segundo M rt 2 bx 264
 Rand Harry (Jessie) rt 3 bx 490
 Randolph Bessie rt 2 bx 128h
 " Z R rt 2 bx 128h
 Rape W R rt 5 bx 179
 Rarig Harold (Dorothy) rt 6 bx 219
 Rasch A C rt 3 bx 15
 " Shirley rt 3 bx 8f
 Rasmussen R E rt 1 bx 57f
 Rassmore R B rt 5 bx 540
 Rathgeb Colleen J rt 2 bx 40b
 " Freda E Mrs rt 2 bx 40b
 " Robt E rt 2 bx 40b

E. M. LEWIS & CO.

FIRST NATIONAL BANK BUILDING

PHONE 4870

570

(1935) R. L. POLK & CO'S

Ratto Ben L. (Gertrude) rt 5 bx 232	Rice H C rt 1 bx 349	Robinson Alex (Ida) rt 3 bx 1d
" Bros rt 5 bx 179	" L V rt 2 bx 23	" Forrest E rt 4 bx 75k
" Chester rt 1 bx 383	" Wm rt 2 bx 23	" H L rt 5 bx 438
" Emilia Mrs rt 2 bx 511a	Richard Ed H rt 3 bx 75g	" Isaac N jr rt 5 bx 87x
" Frank rt 5 bx 179	Richards Annie M Mrs rt 2 bx 115	" Jas (Grace) rt 3 bx 425f
" G (Camilla) rt 5 bx 152	" Arthur rt 6 bx 360	" Jessie rt 1 bx 743
" John rt 2 bx 855	" Christina rt 4 bx 54½	" Richd V rt 4 bx 75k
" John rt 5 bx 179	" Dairy rt 4 bx 438	Rocco Francis rt 3 bx 47kk
" Mary rt 5 bx 219	" E rt 2 bx 911a	Rocha Joe S rt 5 bx 94a
" Nickoletto Mrs rt 5 bx 179	" Florence rt 2 bx 115	" M S rt 5 bx 108
" Tony rt 5 bx 179	" Forrest rt 6 bx 360	" T rt 5 bx 18
" Tony A (Martha) rt 5 bx 174	" Gwendolyn rt 2 bx 115	Rock Geo A rt 3 bx 27n
" Vernon L rt 5 bx 232	" H rt 4 bx 1280	Rocktold T rt 4 bx 37
Ravera Jos rt 3 bx 386	" L rt 4 bx 1280	Roderggiez Augustine rt 3 bx 33
Ravo Wm rt 1 bx 723	" Oscar rt 6 bx 360	Rodgers A A (Bessie) rt 6 bx 335
Rawlings Mary rt 3 bx 22k	" Wm rt 4 bx 54½	" D K rt 1 bx 429
Ray C A rt 5 bx 50	" Wm A rt 6 bx 360	" Henry L (Hazel) rt 5 bx 160
Raymond A E rt 2 bx 983	Richey H M rt 4 bx 54w	" Joe G (Effie) rt 5 bx 177
Ream E E (Ruth) rt 3 bx 8f	Richli Christine Mrs rt 2 bx 186	" Joe J (Isabel) rt 5 bx 212
Rebai F rt 4 bx 66	" Elmira rt 2 bx 186	" Manuel (Georgia) rt 5 bx 270
Rebosioc E rt 6 bx 235	Ricketts C Mrs rt 2 bx 881	Rodrigues Jos (Nora) rt 3 bx 47w
Rechart Alf M rt 1 bx 518	Rickman F W rt 3 bx 428g	Rodrigues Andw rt 4 bx 34b
Redenbaugh Jas (Lucille B) rt 6 bx 207	Ridel M G rt 3 bx 137	Rodriguex M rt 6 bx 106
Reed Chas S rt 4 bx 57	Rider H H (Ida) rt 1 bx 236	Rodtsrom C rt 1 bx 467
" E G rt 5 bx 4	Ridley Vinton L rt 6 bx 134	Roesberry Marilyn rt 3 bx 22g
" J M rt 4 bx 11	Riecks L rt 2 bx 855	Roesel A rt 2 bx 146
" Jack S Mrs rt 1 bx 783	Rigas Chicola rt 3 bx 339	Rogers A J rt 1 bx 1350
" L W rt 4 bx 57	Rigas Christ rt 3 bx 339	" C F rt 2 bx 872
" Nick rt 4 bx 11	Rigato L rt 3 bx 310a	" H E Mrs rt 2 bx 872
" Ruth rt 1 bx 562 f	Rigg Ernest rt 4 bx 56w	" L G rt 6 bx 440b
" Ruth Mrs rt 3 bx 22s	" C C rt 4 bx 488	" Lois rt 2 bx 872
Reeder Ed C rt 3 bx 6n	" J G rt 1 bx 435	Rohr C M (Hazel) rt 1 bx 573
Reese Henry H rt 6 bx 208	" Margt Mrs rt 5 bx 181	Rohrer A L rt 4 bx 66m
Reeves Grace Mrs rt 2 bx 155	Rilarcosa M R rt 3 bx 94	" John rt 4 bx 66m
" Marjorie rt 4 bx 18d	Riser Grady rt 4 bx 1392	Rolandelli G Mrs rt 2 bx 282
" Ona rt 2 bx 155	Risi Ernest (Claudine) rt 5 bx 97	Rolerson A O rt 6 bx 331
Regan Wm rt 3 bx 137	Risk Curtis rt 2 bx 160	" Ada M rt 6 bx 331
Reichert Harry J rt 1 bx 664	Risk Goldie F rt 2 bx 160	" Chester A rt 6 bx 331
" J P rt 5 bx 89c	" Tillie M rt 2 bx 160	Rolleri Caesar rt 1 bx 633
Reichman Anna E rt 2 bx 148	Risley F rt 2 bx 902	" V rt 1 bx 730
" Louis rt 2 bx 148	Risso A rt 1 bx 715	Romagne T rt 3 bx 348
Reichmuth Jos rt 6 bx 323	" Antone (Rosa) rt 1 bx 703	Romano I rt 5 bx 174
Reid C W rt 1 bx 578	" F rt 4 bx 294	Ronkendorf Peter (Annie) rt 5 bx 285
Reidholm Frances Mrs rt 2 bx 61a	" Fred rt 4 bx 294	Roosevelt School rt 1 bx 365
" Victor rt 2 bx 61a	" G rt 2 bx 499	Rose Anita C rt 2 bx 139
Reilly H F rt 4 bx 67½	" G B rt 4 bx 110	" Jos C rt 3 bx 9d
Reimche Helen rt 3 bx 22q	" Geo rt 4 bx 117a	" Nettie rt 6 bx 271
Remonda Wm (Isabel) rt 5 bx 98	" Geo rt 4 bx 294	" R rt 6 bx 271
Rendell W J rt 2 bx 893	" Harry rt 4 bx 117a	" W D rt 2 bx 567
Renisch Sophie M rt 4 bx 291	" J rt 2 bx 273	Roselli L rt 3 bx 48
Renton D J (Myrtle E) rt 3 bx 9q	" Jas rt 3 bx 28bb	Ross A E rt 1 bx 223
Renz F C rt 4 bx 53a	" L rt 2 bx 261a	" Ellen Mrs rt 2 bx 122b
Reppert J J rt 1 bx 921	" Luigi rt 2 bx 527	" J A rt 2 bx 31
Retaglesta L Mrs rt 4 bx 4a	" Natlin rt 4 bx 117a	" J A rt 2 bx 550
Rey Frank rt 5 bx 284	" Peter rt 4 bx 294	Rosseau Mollie rt 6 bx 243
Reynolds D E rt 1 bx 92	Ritchie H V rt 3 bx 1e	Rossi Elanore rt 3 bx 376
" Grace L rt 5 bx 252b	Rivarro J V rt 3 bx 47rr	" Frank G rt 1 bx 844
" Grover rt 1 bx 44a	Rivenbark A D Mrs rt 4 bx 74p	" Geo rt 4 bx 412
" J rt 4 bx 126	Riviera June rt 3 bx 50cc	" John rt 1 bx 657
" J A rt 1 bx 103	Robbins Arth rt 1 bx 86	" Lydia rt 1 bx 12
" John rt 3 bx 3a	" C M rt 5 bx 790	Rossini Fred rt 2 bx 262
" Margt rt 1 bx 88	" Julienne rt 1 bx 86	Rosso A rt 1 bx 636
" Mary Mrs rt 1 bx 88	" Leola rt 6 bx 132	Roth Alden rt 6 bx 400
Rhoades A A rt 1 bx 125	Roberts Arth E rt 2 bx 924	" Winton rt 6 bx 400
Rhode John rt 5 bx 28	" Chas rt 1 bx 936	Rouse Eva Mrs rt 4 bx 18
Rhodes Leonard rt 2 bx 15	" Chas S rt 4 bx 63c	Roush Geo Mrs rt 3 bx 6f
Rhonemus B C rt 6 bx 94	" D D Mrs rt 2 bx 924	Routh G M Mrs rt 2 bx 974
" Ellwood rt 2 bx 94	" Gertrude P rt 2 bx 924	Rovira Florence rt 6 bx 104
" Forrest rt 6 bx 94	" J Mrs rt 2 bx 62	" Frances rt 6 bx 104
" Harry rt 6 bx 94	" L Mrs rt 4 bx 99	" Frank rt 6 bx 104
Riba Anna Mrs rt 2 bx 495	" Lois Rt 1 bx 547a	Rowe L E rt 1 bx 189
" Bert rt 2 bx 495	" Owen A rt 2 bx 924	Rowland John rt 2 bx 273
Ribeiro John rt 5 bx 102	" Roy Mrs rt 1 bx 540	Rowley E E rt 4 bx 42w
Rica A rt 1 bx 547	Robertson Ethel rt 2 bx 153a	Rubele F A Mrs rt 1 bx 795
Rice Albertina rt 2 bx 329a	" H C rt 4 bx 50d	Rudoni P rt 2 bx 310a
" Clarence rt 2 bx 23	" N E rt 3 bx 47w	Ruess H W rt 5 bx 94h
" Dulcie L Mrs rt 2 bx 23	" N W rt 2 bx 153a	Ruffoni John rt 1 bx 658
	" Texie rt 3 bx 7a	Running J L rt 2 bx 233a

- Rushing Jack rt 3 bx 58g
 " Robt rt 3 bx 58g
 Russ Dorothy Mrs rt 4 bx 208
 Russell C A rt 6 bx 237
 " Chas rt 1 bx 561g
 " D C rt 1 bx 792
 " H R (Beulah) rt 3 bx 62d
 " W C rt 1 bx 538
 Ruth Henry J rt 4 bx 414
 " Herman H rt 4 bx 414
 " W Jos rt 4 bx 414
 " Wm H rt 4 bx 414
 Ryan Harry rt 2 bx 895
 Ryland Glenn rt 1 bx 662
 " H R rt 4 bx 40a
 " Merle rt 1 bx 662
 Sabatini G rt 3 bx 344
 Sabbatini G rt 3 bx 72
 Sacco A rt 4 bx 591
 " Sylvester rt 4 bx 501
 Saddington Leono rt 4 bx 9b
 Sain Virginia Mrs rt 4 bx 60m
 Sakakura Roy rt 4 bx 192
 Sala Arth rt 4 bx 474
 " B rt 4 bx 474
 " John rt 3 bx 376
 " John rt 4 bx 474
 " Louis rt 4 bx 474
 Salari G S rt 3 bx 388a
 Salazar P Mrs rt 5 bx 415
 " Pete Y rt 5 bx 415
 Saldana J rt 6 bx 238
 Sales Rosetta rt 3 bx 312a
 Salindo Iriego V rt 4 bx 258
 Salini A rt 1 bx 723
 Salmon Otto rt 4 bx 402
 " W L (Mabel) rt 6 bx 414
 " Wm J rt 4 bx 392
 Salvador Jos (Ruth) rt 3 bx 37w
 Samuels A W Mrs rt 2 bx 888
 " Geo E rt 2 bx 888
 Sanchez Antonio (Mabel) rt 3 bx 52r
 " Julia rt 2 bx 284f
 " Julian P rt 2 bx 284f
 " Teodoro rt 6 bx 147
 " Theodora rt 6 bx 147
 Sandberg A H rt 2 bx 40d
 " Viola Mrs rt 2 bx 40d
 Sandero Frank Mrs rt 3 bx 440
 Sanders Alice E Mrs rt 2 bx 952
 " Harry S rt 3 bx 47
 " Karen rt 3 bx 9v
 " Wm rt 2 bx 952
 Sandow Elton rt 3 bx 9p
 Sandrock Warren rt 3 bx 32b
 Sands Glenn H rt 2 bx 510a
 Sanford Jack (Ruth) rt 3 bx 22t
 " W W rt 3 bx 151
 " Wm rt 4 bx 219
 Sanguinette Edw J (Louisa) rt 3 bx 363
 " Pedro rt 3 bx 385
 " Thos rt 3 bx 110
 Sanguinetti B rt 1 bx 737
 " Bart rt 4 bx 440
 " Bartholomew rt 4 bx 440
 " Benj rt 3 bx 121
 " J S rt 4 bx 12a
 " M J rt 4 bx 425
 " N R rt 3 bx 379j
 San Joaquin Brick Co rt 5 bx 97
 Santos E H (Emily) rt 3 bx 47¼
 " Jos V rt 5 bx 54
 " R P rt 3 bx 59b
 " Rosa rt 6 bx 241a
 Sapala Walter (Rose) rt 6 bx 59
 Sarafino Ben rt 1 bx 742a
 Sarale John rt 3 bx 375
 Sarling John A rt 3 bx 28b
 Sarossin Felix (Lena) rt 6 bx 350
 Sartini rt 2 bx 265
 Sasselli J G rt 1 bx 490
 Satake K rt 3 bx 319
 Sato H rt 3 bx 121a
 Satturburg W R rt 1 bx 265
 Saunders Alma Mrs rt 5 bx 200
 " D G rt 5 bx 273
 " Edwin rt 5 bx 200
- Saunders Ira rt 5 bx 230
 " J Mrs rt 5 bx 273
 Savetti A rt 2 bx 80
 Savigliano O Mrs rt 2 bx 313
 " Otto rt 2 bx 281
 Savio Mary rt 1 bx 563
 Sawyer F E rt 2 bx 493
 Sawyer F E Mrs rt 2 bx 493
 " Kitty rt 3 bx 20b
 Sayles C H (Ida) rt 3 bx 294
 Sayling Maxine rt 3 bx 27p
 " Maxine rt 4 bx 488
 Seclari Enrici rt 3 bx 349
 Seclairino Emilio M rt 3 bx 469m
 Scarlett O R rt 2 bx 969a
 Schaedler Louis rt 2 bx 563
 Schaffer Carl L rt 5 bx 48
 " Joe rt 4 bx 80a
 Schaffner Edw Mrs rt 4 bx 298
 Schallhorn Ethel M Mrs rt 5 bx 10
 " F W rt 5 bx 40
 Scharbrough Jacob rt 3 bx 451
 Scharman John C rt 4 bx 53j
 Scharnhorst A E Mrs rt 6 bx 199
 " Ernest rt 6 bx 199
 " Pat rt 6 bx 199
 Schartz Wm rt 2 bx 273
 Schell John E rt 4 bx 265
 Schenkel C Mrs rt 2 bx 224
 " Cath rt 2 bx 99a
 " Ernest rt 2 bx 238
 Schenone C B (Anna) rt 1 bx 670
 " G rt 3 bx 52b
 Scheurer Florence E rt 2 bx 133
 " John E rt 2 bx 133
 Schielberth Bertha rt 2 bx 569
 " Conrad rt 2 bx 569
 " Emma rt 2 bx 569
 " Marie rt 2 bx 569
 " Mary rt 2 bx 569
 Schierbaum Anna Mrs rt 4 bx 53g
 Schioffini Jos rt 3 bx 72
 Schleusner Kurt W rt 6 bx 295
 Schlittler Mary rt 6 bx 128
 " R F rt 3 bx 311
 Schmid J A rt 4 bx 1180
 " Louis rt 4 bx 1180
 Schmidt Anna Mrs rt 5 bx 231
 " Fred rt 5 bx 231
 " H C rt 5 bx 231
 " Henry rt 5 bx 231
 " John rt 5 bx 608
 " Leo J rt 1 bx 798
 " Lina rt 2 bx 187c
 " Otto rt 5 bx 231
 " R L rt 4 bx 42c
 Schmitt F A rt 4 bx 100
 Schneider B rt 1 bx 554
 " Este W rt 4 bx 1410
 " Geo rt 1 bx 440
 " Geo J rt 4 bx 47L
 " Gus rt 4 bx 18w
 " Gustaf rt 4 bx 1410
 " R H rt 5 bx 24
 " Robt rt 4 bx 18w
 Schnetker Dora rt 3 bx 425
 Schnormeier Arth rt 1 bx 240
 Schon N B rt 1 bx 660
 Schrader Carl L rt 2 bx 924a
 " D A rt 3 bx 141½
 Schroeter Phillipine rt 3 bx 1y
 Schrubb Henry A rt 2 bx 230b
 Schultz Aug rt 1 bx 541
 Schultz C rt 6 bx 95
 " Chas M rt 6 bx 143
 Schumacher H L rt 2 bx 128c
 " J J rt 6 bx 142
 " W A rt 2 bx 40a
 Schutte Beth rt 2 bx 84
 " Carl W rt 2 bx 84
 " Edith M rt 2 bx 84
 " Eliz rt 2 bx 38d
 " Wm rt 2 bx 38d
 Schwartz E M rt 2 bx 239
 " Rose rt 6 bx 166
 Schwedheim Henry rt 5 bx 612
 Schwing Frank rt 1 bx 131
 " J L rt 1 bx 217
- Scofield A H rt 6 bx 142
 " Elmer rt 6 bx 142
 " Winfield rt 6 bx 142
 Scoggins Verne rt 2 bx 145a
 Scolari Joe rt 4 bx 26t
 Scott A E rt 2 bx 493
 " Armel rt 1 bx 961
 " Benj rt 3 bx 27r
 " E rt 1 bx 453
 " Floyd rt 3 bx 135
 " H A rt 2 bx 284i
 " H E rt 5 bx 16
 " J A rt 2 bx 284i
 Scutti A (Rose) rt 3 bx 294h
 " G rt 3 bx 294e
 Seamans E J rt 4 bx 69j
 Searle Floyd D rt 2 bx 25
 " Glenn W rt 2 bx 25
 Sears J B Mrs rt 3 bx 51a
 Seaton L G rt 2 bx 273
 Sebring M rt 3 bx 36c
 Sedor Eva rt 3 bx 47s
 Seeber B L rt 1 bx 62c
 Seeborg Morris P rt 3 bx 473
 Seegers Harlan H rt 6 bx 376
 " Maradah rt 6 bx 376
 Seely Fred rt 2 bx 136
 Seliner E rt 2 bx 993
 Seliner Irene rt 2 bx 993
 Selkirk R W Mrs rt 3 bx 133
 Sellers Donald rt 2 bx 127a
 " E M rt 3 bx 52t
 " La Verne rt 2 bx 127a
 " M F rt 1 bx 98
 " Marian rt 2 bx 127a
 " Pearl rt 3 bx 52t
 Sellers E M rt 3 bx 52t
 " W C rt 4 bx 34b
 Selma C (Lillie) rt 3 bx 172g
 Selma Leopold rt 4 bx 31a
 Semmelhack Hans rt 1 bx 518
 Senior Laura rt 1 bx 564a
 Senn Frank rt 2 bx 222
 " Joe rt 2 bx 222
 " Josephine Mrs rt 2 bx 222
 " Katy Mrs rt 2 bx 222
 Sereniver Earl rt 3 bx 514
 Serpa Geo R rt 4 bx 157
 " Manuel R rt 4 bx 157
 Serviglia S rt 4 bx 80
 Servis John (Mary) rt 6 bx 257
 Settlemoir Katie rt 3 bx 102a
 Setzer Dorothy rt 2 bx 236
 " E O rt 2 bx 236
 " F E Mrs rt 2 bx 236
 " Lena rt 2 bx 236
 Sevits G T rt 2 bx 526
 Sewell A Mrs rt 6 bx 204
 Shafer Carlos J rt 4 bx 17c
 Shafer Geo E rt 4 bx 17c
 " Robt C rt 4 bx 17c
 Shaffer L B PO bx 1121
 " Noel R rt 4 bx 75L
 Shanda R J rt 4 bx 17f
 Shankel O H rt 1 bx 397
 Shankel W C rt 1 bx 584
 Shanks J Carlton rt 2 bx 118k
 Sharp Clifton rt 5 bx 57
 Sharp D Glenn rt 1 bx 483
 Shaw Arth rt 2 bx 109
 " Bernard rt 4 bx 16b
 " Irene Mrs rt 2 bx 109
 " J Mrs rt 6 bx 165
 " Jack S rt 2 bx 879
 " L C Mrs rt 4 bx 15v
 " L R rt 4 bx 80
 " Marietta rt 6 bx 399
 " Roy rt 2 bx 968
 " Tessie rt 2 bx 879
 " Theda rt 2 bx 879
 " Vera Mrs rt 2 bx 968
 " Wm rt 4 bx 16b
 " Zoe rt 2 bx 879
 Shea Mike rt 2 bx 273
 Sheehan J rt 2 bx 273
 " L D rt 4 bx 19
 Shelburn J rt 1 bx 564
 Shell Oscar rt 3 bx 9t

- Shelton F W rt 2 bx 613
 Shenone L rt 2 bx 544
 Shepard Chas A rt 1 bx 608
 " Elmer M rt 1 bx 608
 " Jennie rt 1 bx 608
 " Laurence rt 1 bx 608
 " Mollie Mrs rt 5 bx 462
 " Wm rt 1 bx 608
 Sheperd Chas rt 1 bx 577
 " Paul B rt 1 bx 958
 " Robt rt 1 bx 958
 Sheppard H G rt 3 bx 423
 " T W rt 3 bx 60a
 Sherburn H J rt 5 bx 425
 Sherwood Chas W rt 4 bx 132
 " Clifford rt 3 bx 430
 " Loren rt 2 bx 24
 Shizasaki M (K) rt 6 bx 279
 Shimamoto K rt 6 bx 276
 Shimobashi rt 4 bx 175
 Shimonowsky Dora rt 3 bx 1c
 Shingle A rt 3 bx 51b
 Shiranaka H rt 4 bx 446
 Shirley Lloyd B rt 4 bx 393
 " Walter L rt 4 bx 393
 " Wm J rt 4 bx 393
 Shockley G R rt 4 bx 52a
 Shook Albt (Pearl) rt 3 bx 495
 " John rt 4 bx 50d
 Short A rt 6 bx 186
 Shryock J A rt 6 bx 111
 " Jack E rt 6 bx 111
 Shultz Norman J rt 2 bx 134
 " Viola M Mrs rt 2 bx 134
 Shumake Carl rt 3 bx 47r
 Sicher R rt 3 bx 52x
 Sicking W A rt 1 bx 240
 Siddoway R L (Edith) rt 3 bx 58a
 Siemens Julius rt 5 bx 89c
 Sigler Henrietta B rt 2 bx 118k
 " W Avery rt 2 bx 118k
 Silks Dorothy rt 2 bx 911
 " Henry rt 2 bx 911
 " Mary rt 2 bx 911
 Silva Antonio rt 4 bx 66a
 " Danl rt 5 bx 86
 " J Mrs rt 5 bx 93
 " John J rt 5 bx 93
 " M rt 1 bx 740
 " M P rt 4 bx 222
 " Tony rt 3 bx 47
 " Vanessa rt 2 bx 333
 Silvas Clarence rt 2 bx 899a
 Silveira Antonio rt 5 bx 113
 " Frank rt 5 bx 113
 " John rt 5 bx 113
 " Maria Mrs rt 5 bx 113
 " Martin rt 5 bx 113
 " Tony rt 5 bx 113
 " Wm rt 5 bx 113
 Silver J A rt 2 bx 104
 " Velma rt 3 bx 27k
 Silveira John rt 6 bx 249
 " Jos rt 6 bx 249
 " Lillian rt 6 bx 249
 Simas M F rt 2 bx 251
 Simi John rt 1 bx 828
 Simus C L rt 5 bx 70
 " F L rt 5 bx 70
 Simpson Ben W rt 3 bx 51v
 " Chas T rt 1 bx 339
 " F R rt 2 bx 149b
 Sims Mrs C E rt 6 bx 194
 " J A rt 6 bx 194
 Sipes Claude E rt 3 bx 46j
 Sisco Victor rt 1 bx 71
 Sisting H E rt 1 bx 334
 Skardon Bennett R rt 1 50f
 Sleeth I A rt 4 bx 17d
 Small Albt rt 3 bx 57
 " Albt rt 4 bx 3g
 Smalling D rt 6 bx 195
 Smardell Nick rt 5 bx 16f
 Smiley W J rt 2 bx 972
 Smith A M rt 4 bx 309a
 " Art rt 1 bx 56
 " Smith B F rt 2 bx 945
 " C R (Sadie) rt 3 bx 1m
 Smith Chas rt 4 bx 131
 " Clifton rt 4 bx 52k
 " David rt 4 bx 16L
 " Edna O rt 4 bx 64a
 " Edw rt 2 bx 273
 " Francis rt 3 bx 47
 " Fred Mrs rt 2 bx 74a
 " Geo A rt 4 bx 1394
 " Geo E rt 2 bx 153c
 " Gerard B rt 1 bx 612
 " H C rt 4 bx 52k
 " H E rt 6 bx 440c
 " Harry E rt 4 bx 69j
 " J C rt 3 bx 470
 " Jas L (Ida) rt 3 bx 58e
 " Janis rt 2 bx 10
 " Lena E Mrs rt 4 bx 65
 " Leora rt 4 bx 209
 " Lucille (wid F Y) rt 6 bx 208
 " Minnie A Mrs rt 2 bx 153a
 " Nath rt 4 bx 50v
 " O E rt 1 bx 339
 " O G rt 5 bx 238
 " Raleigh rt 1 bx 438
 " Richd rt 2 bx 10
 " Robt G rt 1 bx 118
 " Rosa rt 3 bx 53
 " S H rt 2 bx 904c
 " Selma rt 2 bx 194
 " Sidney F rt 4 bx 16L
 " Stark B Mrs rt 1 bx 696
 " Thos E rt 3 bx 25cc
 " W B rt 2 bx 194
 " W H rt 1 bx 757
 " Wallace I rt 4 bx 27c
 " Wanda rt 2 bx 74a
 Smythe C M Mrs rt 4 bx 236
 " Herbt J rt 4 bx 236
 " J C (Mary) rt 1 bx 358
 " Snell G W rt 4 bx 68
 Snook Eliz Mrs rt 2 bx 110a
 " H J rt 2 bx 110a
 " Jas O rt 2 bx 110a
 Snow Wm rt 4 bx 3g
 Snyder Earl rt 3 bx 85
 " Francis rt 3 bx 28b
 Sola Andw rt 4 bx 1440
 " Joe rt 4 bx 1440
 " Lawrence rt 4 bx 1440
 " Luigi rt 4 bx 1440
 " Peter J rt 4 bx 1440
 Solari A rt 3 bx 370
 " Antonio (Louisa) rt 3 bx 4a
 " Antonio rt 4 bx 386
 " Frank rt 1 bx 726
 Soler Antone rt 1 bx 717
 Sommers Alex rt 2 bx 891
 Sorenson Anton (Maxey) rt 3 bx 35
 " J Dr rt 6 bx 292
 Soto Wm rt 3 bx 25d
 Souder E K Genl Del
 Sousa M rt 5 bx 5a
 Souanni L C rt 5 bx 13
 South Craven A rt 3 bx 9w
 Southard Vivian S rt 2 bx 118j
 Southwell Martha rt 6 bx 229
 Southwick J W Mrs rt 2 bx 188
 Souza Jess rt 2 bx 289
 Spalding C H rt 4 bx 99
 Spanner Anne rt 1 bx 903
 Spano T rt 1 bx 838
 Spargo Roberta rt 3 bx 509
 Sparr Dorothy Mrs rt 4 bx 174
 Speare Walter rt 4 bx 55k
 Speckman Edna rt 2 bx 569
 " Geo rt 5 bx 81
 " Irma rt 2 bx 563
 " Wilfred rt 2 bx 563
 Spencer Albt rt 4 bx 69k
 " Lester A rt 3 bx 1c
 " N B rt 3 bx 47kk
 " Robt P rt 2 bx 108
 " Thelma rt 4 bx 64t
 " Walter rt 6 bx 430
 Sperl Ludwig rt 2 bx 273
 Sperling Wm rt 3 bx 128g
 Sperry C E rt 2 bx 325
 " Frank rt 2 bx 325
 Spier C A rt 2 bx 273
 Spino John rt 3 bx 428
 " R rt 1 bx 363
 Spradling A rt 2 bx 69
 " Lillian rt 2 bx 69
 Spratt Fred L Genl Del
 Sprengler John V rt 4 bx 401
 Sproston Saml rt 4 bx 48
 Spuehler Bessie rt 2 bx 179a
 " Jacob rt 2 bx 179a
 Spurr Carl I rt 2 bx 58r
 " Dorothy F rt 2 bx 58r
 Stader Carl rt 5 bx 746
 Stagnno L F rt 1 bx 827
 Stahl Gus rt 2 bx 492
 Stamer F L rt 5 bx 749
 " Louis rt 5 bx 749
 Stamper Jas rt 1 bx 518
 Standish N rt 1 bx 191
 Staples L R rt 3 bx 6c
 Starin Bert rt 4 bx 125f
 Starin Geo F rt 5 bx 290
 " L D rt 4 bx 125f
 " Walter rt 4 bx 125f
 " Zada Mrs rt 5 bx 290
 Stark Carl rt 5 bx 200
 " Frank rt 2 bx 860
 " Fred rt 5 bx 200
 " L Mrs rt 5 bx 200
 " Waller D rt 3 bx 12e
 Starkey A W Mrs rt 3 bx 4
 Starr Mark (Essie) rt 3 bx 23f
 Staudenraus Roy rt 2 bx 958
 Strayer C O rt 1 bx 524
 " E A rt 1 bx 524
 " Philip M rt 1 bx 524
 Stefani V rt 1 bx 704
 Stegmiller F rt 2 bx 311
 Steigmiller Louis rt 4 bx 499
 Steinacker Arth rt 4 bx 52v
 Steinbacker John rt 3 bx 34
 Steine Ernest rt 4 bx 42x
 Steinhauer Mary Mrs rt 2 bx 118
 Stendell Geo E rt 5 bx 228
 Stendell Gladys Mrs rt 5 bx 228
 Stene Emily Mrs rt 2 bx 903
 " La Verne T rt 2 bx 903
 Stene Walter M rt 2 bx 903
 Stepankow N rt 4 bx 1110
 Stepp R L rt 3 bx 398
 Sterling W H Mrs rt 1 bx 75
 Stetz Andw rt 5 bx 406
 " Gabriel rt 5 bx 406
 Stevano Felice rt 2 bx 279
 Stevens A rt 1 bx 289
 " Cecelia rt 2 bx 118
 " Dorothy rt 4 bx 121
 " J rt 5 bx 780
 " Laura Mrs rt 5 bx 780
 " R W rt 4 bx 134c
 Stewart Donald L rt 14 bx 1460
 " Earl rt 3 bx 12
 " J G rt 2 bx 26
 " J H rt 2 bx 26
 " L L rt 1 bx 378
 " Lester T rt 4 bx 1460
 " Lon A Mrs rt 2 bx 927
 " Melvin rt 5 bx 518
 " N Mrs rt 2 bx 194
 " Ofeta rt 6 bx 162
 " R H rt 5 bx 518
 " Riley rt 4 bx 351
 " W J Mrs rt 2 bx 927
 Stidston Beulah rt 3 bx 51w
 " N fl rt 2 bx 907
 " Rose M rt 2 bx 907
 " Wm A rt 3 bx 51w
 Stiles Raymond J rt 2 bx 20
 Stimmel B P rt 1 bx 588
 Stichfield Rose rt 2 bx 899a
 Stine H A rt 4 bx 64
 Stirn Robt rt 2 bx 21a
 Stoeker E J rt 3 bx 416
 Stockton Drug Co rt 1 bx 801
 " Hog Co rt 4 bx 417
 " Milk Bottle Exchange rt 1 bx 282
 " Poultry & Egg Exchange rt 4 bx 44b

Dohrmann Wolf Agency

General Insurance Tel. 113, 406 E. Market, Stockton

STOCKTON RURAL ROUTES (1935)

573

- Stolmann Frank rt 4 bx 10
Stoltz Anna Mrs rt 2 bx 195
" R C rt 2 bx 195
Stone G G rt 2 bx 282
" W P rt bx 273
" W T (Nan) rt 3 bx 22b
Stonebraker Ada rt 3 bx 477
Stores Margt rt 3 bx 166
Stover J rt 1 bx 264
Stover Leland D rt 4 bx 40b
" S D rt 4 bx 40b
Strang H E r t2 bx 890
Straward A J (Minnie) rt 3 bx 47e
Strecker Arnold rt 5 bx 259
" Freda Mrs rt 5 bx 259
" Herman F rt 5 bx 259
Striberg Abel rt 4 bx 44c
Strong Ben rt 4 bx 315
" C L rt 3 bx 11x
" Geo rt 4 bx 110c
Stroud Clinton rt 4 bx 14
" Elsie O Mrs rt 4 bx 38
" Ione rt 2 bx 968
" Jack rt 4 bx 14
" Rose C bx 56
Studebaker J E rt 2 bx 273
Stull A J rt 3 bx 47x
Sturdevant E D rt 4 bx 1388
Sturgeon A A (Anna) rt 6 bx 257
Sugik R rt 6 bx 299
Sugita Joe rt 4 bx 420a
Sullivan R rt 3 bx 10h
Sumizawa S rt 2 bx 264
Sumner Harold Mrs rt 4 bx 52w
Sunset Vineyard rt 1 bx 755
Suplich G A Genl Del
Suplick Maud rt 3 bx 30½
Surplus Marion rt 6 bx 220
Susich Steve rt 1 bx 313
Sutherland Herbt rt 4 bx 63k
Sutoko S rt 5 bx 58
Sutter Gus rt 6 bx 175
" Ray rt 2 bx 273
Suttles Mrs Mrs rt 2 bx 865
Swain Anabel rt 1 bx 275
" C F rt 2 bx 320
" Daisy rt 2 bx 275
" Doris rt 2 bx 275
" Eva rt 2 bx 275
" Evelyn B rt 2 bx 315
" Geo C bx 315
" J C rt 2 bx 275
" Jennie Mrs rt 2 bx 320
" R H rt 2 bx 298a
" Ruth rt 2 bx 298a
Swan Fred rt 2 bx 203
" Luella Mrs rt 2 bx 203
" Robt rt 2 bx 203
Swanberg Anna H rt 5 bx 750
Swason Theresa rt 3 bx 11
Swartzell C A rt 4 bx 152
" Gerald rt 4 bx 152
Sween O H rt 6 bx 50
" T P rt 4 bx 3g
Sweeney Gus rt 4 bx 267
Swift E P rt 5 bx 32c
Swinney E C rt 2 bx 236
T & M Garage rt 5 bx 490
Tabooda M rt 2 bx 279b
Tadlock Bobbie Mrs rt 2 bx 897
" Jack F rt 2 bx 2 bx 897
" Joel rt 2 bx 897
Tait Gilbert rt 3 bx 47d
Takatsee N rt 2 bx 266
Takoi K rt 3 bx 310
Talbot Albt J rt 6 bx 246
" Robt rt 6 bx 246
Talbot Walter rt 6 bx 246
" Walter J rt 6 bx 246
Tamura I rt 4 bx 439
Tanaka E rt 2 bx 82
" F rt 2 bx 82
" John rt 2 bx 241
" June rt 2 bx 241
" M rt 2 bx 82
" S rt 6 bx 311
" T rt 2 bx 241
" T rt 6 bx 304
Tangeman Celia rt 4 bx 184
Taniguchi H (L) rt 6 bx 283
Tanita S rt 6 bx 272
Tanos Thos J rt 3 bx 47f
Tappen W I rt 2 bx 951
Tarbox Raymond rt 3 bx 50 x
Tarbutta Caesar (Ella) rt 3 bx 110
Tassano Louis rt 1 bx 640
Tassano Nick (Louisa) rt 3 bx 172b
Tassans G A rt 4 bx 1
Tate F A rt 1 bx 78
Tavella E rt 2 bx 523
Taylor B H rt 1 bx 148
" C E rt 4 bx 68r
" E A rt 3 bx 127
" E E rt 1 bx 808
" Earl R rt 1 bx 446
" Flora C rt 2 bx 507
" Ira rt 5 bx 560
" J A rt 3 bx 513
" J E (Ella B) rt 4 bx 150
" M C rt 1 bx 446
" Madeline L rt 2 bx 507
" Perry C rt 2 bx 507
Teada Ralph rt 4 bx 221
Teasdale Clyde W rt 2 bx 140f
" Mary C r t2 bx 140f
Telschman F P rt 6 bx 262
" Norman rt 6 bx 262
" Roland H rt 6 bx 262
Teller Ivan rt 4 bx 26
Telles Milton rt 2 bx 38a
" O C rt 2 bx 38a
Temple Fred H rt 4 bx 395
Teranishi T rt 5 bx 253
" Y rt 6 bx 1
Terbert Emma J Mrs rt 4 bx 398
Terelizi Louis rt 2 bx 894
Terry Gordon rt 2 bx 488a
" Norine rt 2 bx 488a
Terzich Saveta S rt 4 bx 44a
Tesch Cyril (Bernice) rt 6 bx 350
" W E rt 4 bx 368
Tetrault H rt 1 bx 742
Theodorie S rt 6 bx 143
Theuerkauff Lillian rt 2 bx 870
" W L Mrs rt 2 bx 870
Thierkoff Alta R rt 2 bx 982
" Ben R rt 2 bx 982
" Rueben S rt 2 bx 982
Thiery Ernest (Marie) rt 3 bx 32
Thoen Hal rt 1 bx 787
Tholke Roy W rt 5 bx 724a
Thomas Chas E rt 2 bx 978h
" Chris rt 1 bx 646
" Jess J (Mayme) rt 3 bx 48g
" Preston rt 1 bx 681
" W E rt 4 bx 50z
" Wm (Hulda) rt 3 bx 142
Thompson Alice E rt 5 bx 718
" C E (Mary) rt 3 bx 50f
" C F rt 1 bx 691
" Frank (Ethel) rt 5 bx 148
" Fred C rt 1 bx 447
" Geo rt 4 bx 337
" H M rt 4 bx 52r
Thompson Hugo (Ida) rt 3 bx 50d
" Joe (Eliz) rt 1 bx 673
" Narden M (Mary A) rt 4 bx 431m
" Reba A rt 3 bx 6a
" Richd rt 5 bx 718
" Robt rt 5 bx 718
" Ruth rt 1 bx 447
" S F rt 1 bx 447
" Viola rt 1 bx 97
" W A rt 4 bx 16a
" W C rt 6 bx 122
" Wm H rt 3 bx 396g
" Wm J jr (Nellie) rt 5 bx 68
Thrall Edith rt 4 bx 498
Thornburn L N (Virginia) rt 3 bx 22zz
Thorne Harry rt 6 bx 440r
Thornton Lillie rt 1 bx 72
Thorpe E J rt 3 bx 20
" Edna Mrs rt 2 bx 550
" Harry rt 2 bx 550
" J B rt 2 bx 550
" Robt rt 4 bx 17-4
" Sam rt 2 bx 550
" Sam rt 2 bx 567
" T R rt 2 bx 567
Thran Alf Mrs rt 4 bx 457
Thrush Alice rt 3 bx 295
Tibbits M G rt 4 bx 1100
Tiekvitzna N (Tina) rt 6 bx 80
Tiffany Roy rt 1 bx 563
Tilden Investment Co rt 5 bx 82 a
Timm L Mrs rt 1 bx 661
Timmons Jas rt 6 bx 204
Tinkis S A rt 1 bx 298
Tinsley Chas F rt 6 bx 184
Tipton Leo E rt 2 bx 273
Todd E B (Beatrice) rt 4 bx 1240
Togninalli D rt 4 bx 412
Tomlinson J H rt 4 bx 1130
Tonascia Gus r 4 bx 2a
Tone John A (Grace) rt 3 bx 169a
Tooley Frank genl del
Toomer M L (Bertha) rt 3 bx 38
Toomes Percy rt 3 bx 30½
Toothacre John rt 4 bx 47j
Toporce Geo (Caroline) rt 6 bx 62
Topping Velma rt 3 bx 27k
Torok Chas rt 1 bx 193
Torrey Fannie rt 3 bx 50g
Toscana Dominco rt 4 bx 42a
Tosi John (Angelia) rt 3 bx 175
Toso A rt 2 bx 330a
" John rt 2 bx 508
" L rt 1 bx 848
" L rt 2 bx 330a
" Margt rt 2 bx 508
" Rosie rt 2 bx 508
Tough Thos A rt 2 bx 126 m
Touydrout Peter rt 4 bx 400
Towell Ethel rt 3 bx 47k
Towle Frank Z rt 2 bx 490
" H E rt 1 bx 350
" Wayne rt 1 bx 353
Townsend C H rt 4 bx 48
" C H rt 4 bx 223
Toyotubu Al rt 6 bx 212
Tracy E E rt 2 bx 26
Trantham A F rt 1 bx 220
Traverso Lena rt 2 bx 548
" Peter rt 2 bx 548
Travilla Tony rt 4 bx 117a
Trelut Lucy J rt 2 bx 488a
Tremper Harriet M rt 2 bx 122a
" Paul rt 2 bx 122a
Tresh Wm rt 3 bx 28½
Tribuna A S rt 2 bx 249a

- Tricher J H rt 5 bx 70
 Triolo J P jr rt 1 bx 119
 Tristant Michl rt 4 bx 437
 Trivelpiece Alvin L rt 2 bx 68
 " Eliz Mrs rt 2 bx 68
 " Wm T rt 2 bx 68
 Troftan J D Mrs rt 4 bx 21j
 Trotter Nelson (Flossie) rt 3 bx 11rr
 Troy Geo rt 1 bx 15
 " Terrie rt 6 bx 20
 " Thomas Mrs rt 2 bx 926
 Trucco Mary rt 2 bx 547
 Trumbly A R rt 4 bx 9b
 Tsuenkawa Frank rt 5 bx 466
 Tsugoto J rt 4 bx 125a
 Tsushima Y rt 2 bx 254
 Tubbs E Marion rt 1 bx 599
 " W rt 1 bx 599
 Tucker Emma rt 3 bx 47m
 " J Reese rt 1 bx 957
 " Lila E rt 4 bx 174
 Tufts B Mrs rt 3 bx 8h
 Tulbners Jack rt 1 bx 440
 Tulomanic M rt 3 bx 418
 Tupen Albt C rt 3 bx 48f
 " W H (Minnie) rt 3 bx 49f
 Tupper Arth E (Nellie I) rt 6 bx 93
 " Glenn H rt 6 bx 93
 " Raymond S rt 6 bx 93
 Turano Angelo rt 1 bx 825
 Turbert Carl L rt 5 bx 530
 Turkatte John rt 4 bx 106
 Turner Eliz Mrs rt 5 bx 5
 " Ferrol rt 2 bx 70
 " Geo (B) rt 4 bx 81b
 " Ina L rt 3 bx 29
 " Irma rt 2 bx 563
 " J T rt 2 bx 70
 " J W rt 2 bx 70
 " Jackie rt 2 bx 563
 " Lillian rt 2 bx 21
 " Louis rt 5 bx 5
 " Loula rt 2 bx 21
 " M W Mrs rt 5 bx 59
 " Myriam (Jennie L) rt 4 bx 461
 " N W rt 2 bx 233d
 " M M Mrs rt 6 bx 120
 " Nellie M Mrs rt 6 bx 131c
 " Sam rt 1 bx 557
 Tustsui G (S) rt 4 bx 500
 Tyrell H K rt 1 bx 415
 " Pall A rt 5 bx 744
 Ueda Geo rt 6 bx 212
 " I rt 6 bx 212
 Ukestad Carl rt 1 bx 162
 Ungaretti D rt 3 bx 403
 Union Auto Wreckers rt 2 bx 987
 Uriell J R rt 5 bx 89
 " Jay rt 4 bx 1200
 Urion Lelia C rt 2 bx 958
 " Walter C rt 2 bx 958
 Uyeda J H rt 2 bx 324a
 Vacarczyz L rt 3 bx 52x
 Vaerires Manuel rt 3 bx 122a
 Vail Dorothy J rt 6 bx 386
 " Geo T rt 6 bx 385
 " Ruth rt 6 bx 386
 Valentine H K rt 2 bx 128m
 " Lea rt 2 bx 128m
 " Lois rt 2 bx 128m
 Valley Produce Co rt 1 bx 194
 " Washer Sales Service rt 2 bx 990
 Valponi Louis A rt 2 bx 542
 Valverde Abelva rt 6 bx 136
 " Arville rt 6 bx 110
 " Benjamin rt 6 bx 136
 " Jos rt 6 bx 136
 " Manuel rt 6 bx 110
 " R rt 6 bx 110
 Vana Jos (Louise) rt 3 bx 5b
 Van Bree G rt 1 bx 35
 Van Buskirk Henrietta rt 2 bx 154
 " T J rt 2 bx 154
 Van der Borg Jacob rt 4 bx 236
 Van Schoick Bessie Mrs rt 2 bx 126a
 " J rt 2 bx 126a
 Van Zandt F rt 4 bx 34d
 Varley W J rt 6 bx 450
 Vega Manuel rt 6 bx 446
 Venters C M rt 1 bx 45
 Verges Robt rt 1 bx 547a
 Vernengo P rt 1 bx 337
 Vernon Jas W rt 2 bx 897a
 Verstl F R rt 2 bx 979b
 " L E rt 2 bx 929b
 " Mae rt 2 bx 979b
 " Matilda P rt 2 bx 929b
 Vetter Albt rt 5 bx 540
 " Marie rt 2 bx 62
 " Sadie rt 5 bx 540
 Victory School rt 2 bx 40
 Vierra Joe rt 2 bx 512
 " Jos rt 5 bx 166
 " M G rt 3 bx 102
 Vigh Andw rt 1 bx 181
 Vigliani Jos rt 6 bx 317
 Vignola Martin rt 3 bx 335
 Vignoli Andw rt 2 bx 252
 " Bernice rt 2 bx 252
 " M rt 2 bx 252
 " Rachel rt 2 bx 252
 Villarta Juan rt 5 bx 75
 Vinassa A rt 1 bx 579
 Vincet J H rt 3 bx 431
 " John rt 1 bx 244
 " Laura rt 2 bx 971
 " Lawrence rt 2 bx 971
 " Marie rt 2 bx 971
 " Violet rt 2 bx 971
 Vischi J C rt 1 bx 785
 Vogel E rt 3 bx 47f
 Voight W H rt 1 bx 663
 Von Ende E H rt 2 bx 970
 Vote M J rt 2 bx 62
 " Ralph rt 3 bx 50x
 Vreling John rt 1 bx 239
 " Morris rt 1 bx 239
 Vukoivek John rt 3 bx 51
 Waddel Bob rt 1 bx 43
 " Myrtle M rt 2 bx 994
 Wade H B rt 1 bx 770
 " W H (Gussie) rt 3 bx 43c
 Wadell B W rt 1 bx 84
 " Robt rt 1 bx 84
 Wagner Ernest C rt 2 bx 126n
 " Louis H rt 3 bx 28b
 " R E rt 3 bx 59d
 " W R rt 1 bx 388
 Wahl A A rt 3 bx 1a
 Wahlert C A (Nellie) rt 3 bx 455
 Waite Ella Mrs rt 2 bx 994
 " Ida J rt 2 bx 994
 Wakayama K rt 6 bx 212
 Wakefield Eliz rt 2 bx 309
 " W S rt 2 bx 309
 Wakeham J Mrs rt 5 bx 76
 " W H rt 5 bx 76
 Walbridge W rt 1 bx 433
 Waldvogel E C rt 1 bx 616
 Walker Carl H rt 1 bx 781
 " Edw rt 3 bx 47f
 " Eugene rt 4 bx 18v
 " Geo A rt 1 bx 114
 " Geo E rt 5 bx 56
 " Geo F rt 5 bx 56
 " Harry T (Mabel) rt 4 bx 17d
 " Harry T rt 4 bx 18v
 " Mabel Mrs rt 4 bx 18v
 " Melvin R rt 5 bx 56
 " Nellie G Mrs rt 5 bx 56
 " V I & Co rt 1 bx 686
 Wallace Chas rt 3 bx 51a
 " Delia rt 1 bx 807
 " Frank (Agnies) rt 6 bx 62
 " Fred rt 2 bx 932
 " Hazely rt 2 bx 127a
 " Majel rt 2 bx 127a
 Waller John (Marie L) rt 4 bx 82g
 Wallin C E (Edith) rt 3 bx 27
 Walling Chas V rt 1 bx 169
 Walsh E V rt 3 bx 471a
 " Fred P rt 5 bx 91
 " Mabel rt 1 bx 322
 " S H (Sarah) rt 3 bx 320
 Walsh W A rt 5 bx 120
 Walter Jas rt 6 bx 115
 " Mary G rt 2 bx 233L
 " Mildred rt 6 bx 115
 " R B rt 2 bx 233L
 " Sherman rt 6 bx 115
 Walters B rt 1 bx 526
 " Robt E rt 1 bx 100
 Walton Marie L rt 4 bx 74
 Wamsley Albt rt 5 bx 81a
 " Leslie R rt 5 bx 81a
 " Phoebe rt 5 bx 81a
 Wann L A rt 4 bx 1395
 Warberg Maurice rt 4 bx 1180
 Ward C I Mrs rt 1 bx 179
 " J H rt 1 bx 691
 " Jas rt 1 bx 179
 " R (Lois) rt 3 bx 22s
 Warner Annie M Mrs rt 2 bx 892
 " Ed F rt 2 bx 892
 " Irving W rt 4 bx 60L
 Warren A C (Viola) rt 6 bx 209
 " C F rt 1 bx 669
 " Jas A rt 2 bx 181
 Washburn J B rt 1 bx 802
 Watanaba Chajiro rt 4 bx 459
 " F rt 6 bx 354
 " S rt 2 bx 517
 Watee John rt 3 bx 47s
 Waters Harry (Maude) rt 4 bx 19
 Watles Eva C rt 3 bx 47q
 Watonabe Ben rt 6 bx 326
 " Kim rt 6 bx 326
 " Tomiko rt 6 bx 326
 " Violet rt 6 bx 326
 Watson Harold rt 2 bx 276f
 Watters Wesley rt 3 bx 32c
 Wauchope A E rt 3 bx 2aa
 Way Edw rt 5 bx 780
 Weatherhead Geo A (Mabel) rt 3
 bx 500
 Weatherwax Sarah rt 4 bx 427
 Weaver Bobbie rt 4 bx 68w
 " Verne rt 2 bx 322
 " W W rt 3 bx 3d
 Webb O P rt 2 bx 199
 Webber Helen rt 2 bx 981
 " W P rt 1 bx 510
 Weber Celeste rt 2 bx 154
 " Chas M rt 2 bx 324
 " Julia H rt 2 bx 324
 " W L rt 2 bx 154
 Webster D rt 2 bx 273
 " Doris rt 3 bx 9L
 Weeks Arth rt 1 bx 98
 Wehe Fred Genl Def
 Weierhauser Henry J rt 4 bx 385
 " John rt 4 bx 385
 " Wm (Lillian) rt 4 bx 384
 Weil Alf P rt 5 bx 467
 " Philip E rt 5 bx 467
 Weinhold F rt 2 bx 915
 Weiss Gertrude Mrs rt 1 bx 561f
 Weist Alice rt 3 bx 53
 Weitz Lee rt 5 bx 732
 Welch Chas Mrs rt 6 bx 123
 " Chas R rt 6 bx 113
 " Percy (Sylvia) rt 4 bx 17v
 " W C Mrs rt 1 bx 27
 Weldy Clyde R (Bernice) rt 3 bx 22rr
 Wells C C rt 1 bx 613
 " Chas rt 4 bx 54z
 " Geo F rt 2 bx 898
 " Jay Mrs rt 3 bx 62d
 Wernes Chas rt 2 bx 155f
 " Magdalena rt 2 bx 155f
 Wertz R W rt 3 bx 25e
 West Mrs rt 1 bx 665
 " M W rt 2 bx 968
 " Side Bungalow School rt 5 bx 23
 " Walter rt 2 bx 899a
 Wester O C rt 2 bx 273
 Westfall Wm rt 3 bx 439
 Westphal Richd rt 1 bx 903
 " Robt E rt 1 bx 903
 " Winifred rt 1 bx 903
 Whaley Saml rt 4 bx 393

HOTEL RAMONA**Garfield
1000****EVERY ROOM WITH PRIVATE BATH****QUIET — REFINED — HARMONIOUS****174 ELLIS ST.****San Francisco, Calif.**

STOCKTON RURAL ROUTES (1935)

575

Wheeler C M rt 3 bx 52r

" E D rt 5 bx 533

" Edw rt 3 bx 52k

" O E P O Box 815

" R A rt 1 bx 793

Whelan Jas rt 2 bx 273

White Annie H Mrs rt 2 bx 125a

" Clara rt 1 bx 830

" H S rt 5 bx 86a

" June rt 2 bx 890

" Luther rt 2 bx 273

" Mary P rt 2 bx 948

" Percy E rt 2 bx 948

Whitehead A J rt 1 bx 287

Whitehouse J V rt 4 bx 215

Whiteman Virgil rt 3 bx 45

Whiting A H rt 4 bx 53k

Whitson John (Phyllis) rt 3 bx 58j

Whitt Effie rt 2 bx 180

" Marie rt 2 bx 180

" W rt 2 bx 180

Whyte Chas rt 4 bx 9b

" Douglas rt 4 bx 9b

" Stephen I rt 4 bx 9b

Wickham Elmer J rt 6 bx 182

" Leo F rt 6 bx 182

" Paul J rt 6 bx 182

Wickhorst Henry rt 4 bx 82m

Widman Althea rt 1 bx 461

Wierck W H rt 2 bx 273

Wiese Kath rt 2 bx 930

Wiggins Earl E rt 2 bx 906a

" Mary rt 5 bx 438

Wigginton Naomi rt 3 bx 47a

" Wilda rt 4 bx 63h

Wilchman G G (Sadie) rt 3 bx 84

Wilcox Wm H rt 3 bx 26

Wiles Geo rt 1 bx 235

Wiley C R rt 6 bx 450

" Ellen rt 6 bx 127

" Franklin rt 6 bx 127

Wilkerson Roy rt 5 bx 5a

Wilkins Chester rt 4 bx 52j

Wilkinson C E rt 2 bx 253

" Elmer W rt 5

" Ethel rt 2 bx 74b

" J A rt 6 bx 159

" Kitty Mrs rt 5

" Levi B rt 6 bx 110k

" O N rt 2 bx 74b

" W P rt 1 bx 695

" W P rt 4 bx 166

Willits Jessie K rt 3 bx 307

Williams Agnes rt 3 bx 28aa

" Claude rt 2 bx 911a

" E B rt 2 bx 273

" Francis L rt 3 bx 2g

" Frank rt 3 bx 6w

" G F rt 6 bx 123a

" G F rt 6 bx 296

" Geo rt 1 bx 430

" H J rt 6 bx 148

" H L rt 2 bx 74h

" Harr (Doris) rt 6 bx 414

" J D rt 3 bx 422

" J E rt 2 bx 307

" Jess rt 3 bx 162

" S M rt 1 bx 496

" Violet rt 2 bx 202a

" W W rt 4 bx 374

Williamson A G (Inez H) rt 4 bx 274

" Clyde rt 2 bx 146a

" F A rt 1 bx 663

Williford O rt 4 bx 34a

Willing John rt 5 bx 84

Willis Goldie Mrs rt 2 bx 149c

" Saml rt 5 bx 754

Willis T Mrs rt 5 bx 754

Wilson Chas rt 2 bx 947

" Geo H rt 1 bx 254

" Geo W rt 2 bx 909

" Geraldine rt 1 bx 254

" Grace Mrs rt 2 bx 140f

" H N rt 2 bx 93

" H W rt 3 bx 312a

" Hazel rt 2 bx 892

" John rt 1 bx 525

" Wm R (Cora E) rt 3 bx 47 1-3

Winer Mind Mrs rt 4 bx 73½

Winans Lois I Mrs rt 3 bx 444

Winder Sam F rt 6 bx 701

Winn C E rt 1 bx 470

" E J rt 1 bx 266

" Wm F (Daisy) rt 3 bx 27m

Wirth Eliz Mrs rt 2 bx 88a

" Geo rt 2 bx 88a

Wirtz Wanda rt 1 bx 738

Wisby Henry rt 3 bx 468a

Wise Reo B N rt 1 bx 364

Witham W M Mrs rt 1 bx 562f

Withers Jas rt 1 bx 640

Witt Herbt rt 4 bx 67y

" Paul E rt 4 bx 67v

" Theo rt 5 bx 100

Wittie M E rt 1 bx 549

Wiltmeir Mabel rt 2 bx 171

" S L rt 2 bx 171

Woelful Alex rt 2 bx 231b

Wolfe E C rt 3 bx 9d

" Ray rt 3 bx 9dd

" W H Mrs rt 3 bx 19

Wolverton J B rt 3 bx 48a

Wonderlich Henry (Rosa B) rt 3 bx 500

Wood Bessie J rt 4 bx 1410

" J R (Rose) rt 1 bx 552

Woodbury Corra rt 2 bx 510

" L (Emma) rt 4 bx 267

" Ruth rt 2 bx 510

" W W rt 2 bx 510

Woodcock Jas V rt 3 bx 169a

Woodhull W J rt 5 bx 712

Woodbridge W M rt 1 bx 615

Woodruff Geo E rt 3 bx 14a

Woods Clara A rt 4 bx 400

" Claude E rt 2 bx 59

" Loyd jr rt 5 bx 120

" Margt E rt 2 bx 59

" W rt 4 bx 219

Woodside C L rt 1 bx 112

" W D rt 2 bx 977

Woodstock W F (Sadie) rt 3 bx 10¼

Woodward Troy rt 1 bx 445

Woodworth Harvey rt 1 bx 564a

Woody Eliz rt 1 bx 552

Worcester Wilbur B (Minnie) rt 1 bx 240

Workman Helen Mrs rt 2 bx 75

" Milo B rt 2 bx 75

" W B rt 5 bx 5a

Wormuth Mac rt 1 bx 547a

Worre Olave rt 6 bx 440r

Worthy P W rt 3 bx 25e

Wright D P rt 1 bx 656b

" Ed rt 2 bx 149c

" Goldie rt 2 bx 149c

" H V rt 1 bx 694

" Helen rt 1 bx 539

" John rt 3 bx 387g

" John W (Maude C) rt 4 bx 69

" L C rt 3 bx 62b

" Maud rt 3 bx 47f

" Melba rt 1 bx 911

" W C (Dorothy) rt 4 bx 18t

Wright W J rt 1 bx 831

" W P rt 1 bx 656b

Wunderlich Clarence rt 5 bx 1

" Florence Mrs rt 5 bx 1

Wyant Blanche Mrs rt 5 bx 62d

" Richd rt 5 bx 62d

Wyatt Frank E rt 2 bx 93

" Hartley rt 1 bx 656

" N H rt 1 bx 656

" Nolan rt 1 bx 656

Wyman Ernst (Muriel) rt 6 bx 145

Yager Bill rt 6 bx 158

" Gertrude rt 6 bx 158

" H rt 6 bx 158

Yagi T rt 6 bx 281

" Y rt 6 bx 281

Yakoi K rt 3 bx 331

Yamakawa F rt 3 bx 94

Yamamoto D rt 4 bx 454

Yamasaki I J rt 4 bx 175

" U rt 6 bx 311c

Yancy Betty Mrs rt 2 bx 3

Yandell N I Mrs rt 4 bx 1450

Yankee Andw rt 3 bx 436

Yaple W H rt 4 bx 89

Yasui Hisakichi rt 5 bx 424

Yatrow Sam (Sara) rt 1 bx 260

Yeager Arlos M rt 1 bx 940

" Estelle rt 1 bx 940

" Thos rt 1 bx 940

Yearick Francis rt 6 bx 100

" Harry rt 6 bx 100

" Walter rt 6 bx 100

Yelland Walter rt 6 bx 430

Yepez Lorenzo rt 4 bx 1050

Yescas L Mrs rt 3 bx 50ff

Yeltner Bernard rt 6 bx 290

" Kath rt 6 bx 290

" Mary G rt 6 bx 290

" Rose Ann rt 6 bx 290

" W M rt 6 bx 290

Yoke Chow rt 6 bx 318b

Yonenage C rt 2 bx 91

" J rt 2 bx 91

Yong Danl rt 6 bx 318

Yoshida I rt 6 bx 316

" K rt 4 bx 491

Yoshimi D rt 4 bx 496

Youman J E (Eliz) rt 6 bx 59

Young Adrian (Lillie) rt 5 bx 4

" David E (Eliz M) rt 4 bx 1382

" Freeland C rt 2 bx 981

" G rt 2 bx 273

" L M rt 2 bx 567a

" Lee rt 6 bx 318b

" Loris G rt 2 bx 904b

" Malcolm rt 4 bx 249

" Mildred rt 2 bx 960

" O B rt 1 bx 615

" R D rt 4 bx 1240

" R J rt 6 bx 125

" Roberta rt 6 bx 125

" Ronald rt 2 bx 981

" Thos rt 1 bx 240

Yount F A rt 2 bx 200

" H L rt 6 bx 382

" Laura T Mrs rt 2 bx 200

Zaligzi J rt 3 bx 128a

Zaryetti D rt 3 bx 83

Zatz Val (Gertrude) rt 6 bx 164

Ziembo M rt 1 bx 207

Zimmer Harry (Lenora) rt 2 bx 890