

# B. C. WALLACE MORTICIAN

TEL 2591

Stanislaus Cor. Channel St. **WALLACE AMBULANCE SERVICE**  
STOCKTON, CAL.

## LATHROP—Continued

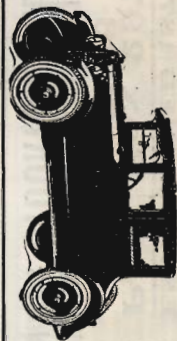
Rhyiner Wm A carried RFD rt 1  
Salmon Bourdett W farmer rt 1  
Salmon Jas T rancher  
Salmon Jas V farmer rt 1  
Salmon Wm C farmer rt 1  
Salmon Wilbur L farmer  
Sanguinetti Benj farmer  
Sanguinetti Jos acct  
**SANGUINETTI & SON (Mrs Ann  
and Dario A) Gen Mdse**  
Schonert Edw A farmer  
Seamands Oscar A signalmn  
Shannon Robt real est  
Shattuck Chas B farmer  
Shaw Geo E elec  
Siebert Henry lab  
Smith Harvey R farmer  
Smith Laurence mach  
Smith Marion R farmer  
Smith Victor stockmn  
Smith Wm H farmer rt 1  
Sousa Geo dairymn  
Sperry Mrs Helen  
Sperry Mrs Sarah J  
Spina Mike lab  
Spina Thos lab  
Squires Louis J farmer  
Streeter Sylvester M farmer  
Sutter Ray lab  
Taylor Elijah lab  
Taylor Miles L afrmer  
Tholke Henry farmer  
Thompson Robt H farmer  
Thomsen Alex J farmer  
Thomsen Henry J lab  
Thomsen Wm A lab  
Thran Ernest farmer  
Thran Herman farmer  
Thran Wm H farmer rt 1  
Tinnin Robt L farmer  
Tobin Jas farmer  
Toops Earl V cashr Spreckels Su-  
gar Co  
Toops John R farmer  
Travis John H farmer  
Trullinger Walter lab  
Turk Frank lab  
Turner Hartley  
Vielra John J farmer  
Warburton Armond dairymn  
Waterman Frank W farmer  
Waw M G towermn SPCo  
Wemhold Edwin lab  
Wetherbee Geo W farmer rt 1  
Wheaton Geo B farmer  
Whisman Jos C farmer  
Whitlock Harry C merchant  
Wiggin Chas T farmer  
Wiggin Thos T farmer  
Wigley Jefferson butcher  
Williams Martin ranch foremn

Williams Orrin H farmer rt 1  
Williamson W L vet surg and  
contr  
Wilson Carl E farmer  
Wilson Chas O farmer rt 1  
Wolfe Harold M farmer  
Wolfe Huber L mach  
Wolfe H W mech  
Wolfe Jacob M farmer  
Wolfe John W apiarist  
Wolfe J Milo rancher  
Woodward Saml G rancher

## LINDEN

(See also Stockton R F D 2)

Alling Lucius E farmer  
Ames Roy W Justice of the Peace  
Anderson Albert A farmer  
Anderson W Chas  
Anderson Clarence C farmer  
Ashley Chas farmer  
Atkins Geo W farmer  
Atkins Green mech  
Atkins Jas N driller  
Atkins Nalopha G farmer  
Bacon Bursey S farmer  
Bailey Edw F farmer  
Baker Eugene C tchr  
Barling Frank D farmer  
Barry Edw M lab  
Barth Otto F tchr  
Bauer Frank A farmer  
Bauer Geo F lab  
Bauer Wm F lab  
Bava Giovanni farmer rt 1  
Beckwith Byron D farmer  
Beckwith Jesse W farmer  
Benjamin Mrs Annie L farmer  
Berry Geo H farmer  
Berry Thos W farmer  
Bettis Hayes lab  
Beyer Otto A farmer rt 1  
Bishop Ralph T mech rt 1  
Elize Andrew M farmer  
Board Horace meats  
Board Jas M farmer  
Bonomo Giuseppe farmer  
Boroff Wm E pruner  
Bowden Wm clk  
Boyer Roy M salsn  
Brady Thos J lab  
Breitenbucher Chas A farmer rt 1  
Brewer Danl farmer  
Bryan Thos D farmer  
Buckley Wm L phys  
Cady Addison farmer  
Cady Alva W farmer  
Cady Chas farmer  
Cady Frank M farmer  
Cady Nathan H farmer rt 3  
Cady Walter A mech



**CUTTING & LUSIGNAN**

231 N. CALIFORNIA ST.

**SALES: SERVICE**

TEL. 1432

STOCKTON

**MAXWELL**

*Franklin*

# VANS MANUFACTURING CO.

Manufacturers of **VANS DOUBLE SUCTION PUMPS AND ELBOW CHECK VALVES**

TEL. 324 J

519 N. CHURCH ST.

311 LODI, CAL.

**REAL ESTATE  
INS.**

**SUBDIVISIONS**

**17 S. SAN JOAQUIN**

Est'd

**L. M. CUTTING & CO.**

1860

**FARM LANDS  
LOANS**

**A SPECIALTY**

**Tel. 176. STOCKTON**

**ESTABLISHED 1871  
P. O. Box 297  
Phone 2336**

**CLARK'S SANATORIUM**

For the treatment of Mental, Nervous, Alcoholic and Narcotic cases. Beautifully situated within its own extensive grounds. Completely equipped with the most modern Hydro and Electro Therapeutic Appliances **STOCKTON, CAL.**

**LINDEN—Continued**  
Carroll Wm H farmer  
Carson Harry lab  
Cavagnaro Mrs Antonio  
Cavagnaro Frank gardener  
Chase Clarence D farmer rt 1  
Chase Clarence M farmer rt 1  
Christensen Chas P lumbermn  
Clifford Mrs E A farmer  
Clinton Leslie H fruit grower rt 1  
Cole Duke feed mill  
Cox Andrew H farmer  
Cox Fredk A farmer  
Cox Henry M farmer  
Cox Jas B farmer  
Cox John B farmer  
Cox Perry H farmer  
Cox Wm H farmer  
Creary Frank A paperhngr  
Crill Howard farmer  
Cuneo Jos farmer  
Cuslidge Maurice A lab  
Dames Henry farmer  
Dasso Albert B stockmn  
Davis Edgar L farmer  
Debendetti Frank lab  
De Carlo Geo barber  
Demartini Nicola fruit grower  
Devincenzi Aug L farmer  
Doscher W garagemn  
Drace Chas E mech  
Drunsfeld Alex farmer  
Drunsfeld Chas lab rt 1  
Drunsfeld Geo farmer  
Drunsfeld Jas farmer rt 1  
Duncan Chas H farmer  
Dunton Geo H farmer  
Duncan Jas A clk rt 1  
Eckstrom Oscar W farmer  
Edwards Robt L farmer  
Eiler Gus farmer  
Eliot Ray B mkt gardener  
Fanning Wm J Constable  
Farando Bert farmer  
Ferguson Mrs Ida  
Fine Lena farmer  
Finnerty Wm A farmer  
Fisher Burtis C farmer  
Fisher Marshall W farmer  
Foote Frank J farmer  
Foote Ralph M hdw  
Foote Robt N farmer rt 1  
Fraezier John E farmer  
Freeman Walter farmer  
French Fred M farmer  
French F E farmer  
French Lee J farmer  
French Russell J farmer  
Galgiani Atillio lab  
Gill Chas H mech  
Gill Geo D farmer  
Gillette B farmer

Gausing Carl farmer  
Grayson John lab  
Green Edw W tchr  
Grimsley John H blksmith  
Groseclose Eli D farmer  
Guernsey Fred A farmer  
Hale Jos H farmer  
Hamilton Porter R farmer  
Hamilton Wm B farmer  
Hansen Peter F farmer  
Harrison Chas N farmer  
Harrison Frank P farmer  
Harrison John farmer  
Harrison Mrs Jos F rural carrier  
Harrison Timothy J farmer  
Harsmندی Jos A lab  
Haselden Rev Wm R  
Hastie Jas A farmer  
Hedger Clarence A farmer  
Hedger Jos U B farmer rt 1  
Heltcell Clyde E farmer  
Heltcell Elmer farmer  
Heltchel Henry D farmer  
Hight C S farmer  
Hight Herbert lab rt 1  
Hill Wm F garage  
Holloway Bert J farmer  
Holman Mrs Mattie farmer  
Holman Neal S farmer  
Horr John lab  
Hoselden Rev W R  
Hubert Henry T stockmn  
Hughes Edw J blksmith  
Hughes Mrs Margaret agt PT&TCo  
Hunt Bros orchs  
Hunt Oliver H orch  
Hunter Harvey W lab  
Israel Frank S farmer  
Johnson Adolph T mach rt 1  
Johnson Oscar lab  
Keller Elmer L farmer  
Keller Wm G farmer  
Kitle Cornelius P farmer rt 1  
Knell Louis W tmstr  
Ladd Edwin H farmer rt 1  
Ladd Jas E farmer  
Lagorio Amerigo farmer  
Lagorio Louis J farmer  
Ledford John H lab  
Lemaster Donald clk  
**LEMASTER HUGH H Merchant**  
Leonardini Jas W farmer  
Leonardini John J farmer  
Leonardini Lazzaro farmer  
Leonardini Peter L farmer rt 1  
Lewis Horace C farmer  
Lewis Jack lab  
Linn Peter F farmer  
Little Wesley M farmer  
Locatelli Peter farmer  
Long Jas P lab  
Lundblad Paul A farmer rt 1

**C. E. BRAMWELL, D. C. Chiropractor**  
(Palmer Graduate)

**CHIROPRACTIC  
Restores Health**

**Suite 314-15 First Nat. Bank Bldg.**

**PHONE 898**

**STOCKTON**

372

# CALIFORNIA CITY AND COUNTY DIRECTORIES

POLK-HUSTED DIRECTORY CO. P. O. BOX 687 SACRAMENTO

## LINDEN—Continued

Lynch Harry P farmer  
 Lynch Jas E farmer  
 Lyons John J farmer rt 1  
 Lyons Victor B farmer  
 Lytle John B farmer  
 Lytle Otis M farmer rt 1  
 McCardle John farmer  
 McClendon Geo farmer  
 McClure Robt lab  
 Macomber Frank H farmer rt 1  
 Mahan Frank W farmer  
 Marquadt Dora farmer  
 Martin Jas T farmer  
 Mattson Nils farmer  
 Maxwell Alfred L farmer  
 Meier Frank L farmer  
 Messick Chester W farmer  
 Messick Edwin F lab  
 Metzler Chas farmer  
 Metzler Henry W farmer  
 Meyer Cecil K farmer  
 Meyer Chas H farmer  
 Meyer Chas W farmer  
 Meyer Mrs Henry K farmer  
 Meyer John D farmer  
 Middlekauff Hiram E  
 Miller Chas H farmer  
 Miller David W farmer  
 Miller L E farmer  
 Miller Raymond W farmer  
 Mills Frank R farmer  
 Morrill Earl A farmer  
 Mozzett Frank W farmer  
 Myers Jas S farmer  
 Myers Jesse C firemn  
 Olsen Geo B farmer  
 Osterman Mrs M orch  
 Peacock Eugene well borer  
 Pemberton Augustus W carp  
 Pemberton Orson K well driller  
 Pemberton Wm  
 Pendleton Palmer H farmer  
 Perryman Geo H farmer  
 Peterson Fred W farmer  
 Platt John S farmer rt 1  
 Potter Bertrum W farmer  
 Potter Elna R  
 Potter Jos farmer  
 Potter Lloyd A farmer  
 Prather Reba H  
 Prather Thos F farmer  
 Prato Ernest lab  
 Prato Jas A gardener  
 Pratorius Andrew C L farmer  
 Ramirez Andy lab  
 Richey Everett A farmer  
 Richey Wm H farmer  
 Richey W R farmer  
 Richter Chas H L lab rt 1  
 Riseden Wm asst div eng SPCo  
 Robbins Lewis E carp

Ross Jos farmer  
 Rovegno Geo J farmer  
 Ryburn John B farmer  
 Ryburn John C farmer  
 Ryburn Robt farmer  
 Ryland Saml V eng rt 1  
 Sanguinetti Roy L farmer  
 Sayles Mrs Rosetta farmer  
 Schassens Thos farmer  
 Schutte Fred W farmer  
 Seymour Chas W farmer  
 Shipley Isajah T merchant  
 Simonich Frank J butcher  
 Smith Bert butcher  
 Smith Jos barber  
 Smith Kingsley farmer  
 Solari Louis farmer  
 Souder Chas H L apiarist  
 Sperry Elwin W F lab  
 Spicer Hobart J farmer rt 1  
 Spicer Jos E farmer rt 1  
 Staples Jas H lab  
 Staples Jas S orch  
 Staples Lawrence farmer  
 Strong Fred L Postmaster  
 Swank Amon farmer  
 Talbot John A farmer  
 Thompson Geo W lab  
 Treat Jas F supt  
 Treat Walter D lab  
 Turner Henry H lab  
 Vanciel Edw lab  
 Vanciel Frank farmer  
 Vanciel Geo M lab  
 Vickery J H farmer  
 Vint Robt J lab  
 Walker Sidney E merchant  
 Wall Walter farmer  
 Walsh Fredk T farmer  
 Ward Wm B lab  
 Wardrobe Arthur J lab  
 Warren Ben E H farmer rt 1  
 Waters Roy N farmer  
 Watson Frank B farmer  
 Webb Geo A lab  
 Webb Robt clk  
 Welsh Edw A farmer  
 Welsh Matthew A farmer  
 Whitecomb Mrs C E farmer  
 Whitcomb Willard M farmer  
 Willits Kay O farmer  
 Wilson Edw G farmer  
 Wilson F A barber  
 Wright Mrs S E

## LOCKEFORD

(See also Lodi RFD also Peters)

Allen Fred C farmer  
 Ambrose Warren B  
 Anderson John carp  
 Anderson Tip farmer

# HESS

## DYEING AND CLEANING WORKS

Established

# 49

Years

PHONE

# 1182

# 338

N. Calif.

# Stockton

**CLASS A GARAGE** O'LEARY & MINAHEN, Props.  
**AUTOMOBILES** and **ACCESSORIES** Day and Night Service  
 125 S. Sutter St. STOCKTON  
 PHONE 38373

# CITY BANK

"The Marble Bank Building"

MAIN at SUTTER St. Phone 5318

SAVINGS COMMERCIAL SAFE DEPOSIT BOXES

CLARENCE

L.

DICKINSON

WHOLESALE

HAY

GRAIN  
BEANS  
BAGS

PHONE

4943

44

E. Weber Av.  
STOCKTON,  
CALIF.

LOCKEFORD—Continued

Babich Michael farmer  
 Bacigalupi John A farmer  
 Bacon Chas A well borer  
 Baker Aaron H farmer  
 Banks Harry L dairymn  
 Barbour Nathan R phys  
 Barbour Roswell P real est  
 Bassi Emil lab  
 Bassi Herman farmer  
 Beckman Otto F whsmn  
 Berns Wm J cigarmkr  
 Binger Carl E farmer  
 Binger Wm H mach  
 Blewett Henry E farmer  
 Boniface Henry carp  
 Bradley Geo D farmer  
 Breitenbucher Frank farmer  
 Brennan John farmer  
 Bresee Louis H farmer  
 Brown Elda L farmer  
 Bryant Wayne L farmer  
 Bunds J Wm farmer  
 Burns Jas M farmer  
 Buss Gustave farmer  
 Cayton Geo W farmer  
 Chitwood Isaac N  
 Clifford Albert B farmer  
 Clifford Claude L agt SPCo  
 Clasen Chas J farmer  
 Clasen Fredk W farmer  
 Clasen Peter H farmer  
 Clifton Sidney J farmer  
 Coil Chas C gen mdse  
 COIL JESSE A Postmaster  
 Coil Ralph T clk  
 Crawford John W painter  
 Daley Thos H blksmth  
 Davis Edw W lab  
 Davis Leslie farmer  
 Davis Marshall E farmer  
 Decchnino John farmer  
 Demangeot Mrs Hannah L  
 Dempsey Widy farmer  
 Deveggio & Ross (Louis A Deveg-  
 gio L E Ross) gen mdse  
 Dietderich Chester S farmer  
 Dietderich Peter farmer  
 Dietderich Robt E farmer  
 Disch Chas H farmer  
 Disch Chas W farmer  
 Disch Leland J farmer  
 Dodson Thos H lab  
 Doty Mrs Jessie tel opr  
 Downie Jas P salsn  
 Dvorah Ciril farmer  
 Early Whitfield farmer  
 Easton Richd K farmer  
 Easton Wm T lab  
 Erickson John E farmer  
 Fetzer Henry farmer  
 Figge Fredk J garage

Fischer Frank lab  
 Flanders Mrs Amanda  
 Flanders Clarence L farmer  
 Flanders Roy clk  
 Fogg Walter S dentist  
 Garretson G R Justice of Peace  
 Griffith Donner L  
 Gronroos Carl W farmer  
 Hamborg Chas farmer  
 Hamm Wm M  
 Hammond Jas A farmer  
 Hammond John C vineydst  
 Hansen Saml C W  
 Harrell Frank M farmer  
 Holman John farmer  
 Horan Nelson K farmer  
 Huestis Stephen D farmer  
 Hunter Mrs Ada V  
 Hunter Mrs Christina  
 Hunter Geo A lab  
 Hunter Horace M lab  
 Hunter Saml T lab  
 Inglis Alex farmer  
 Inglis Alex Jr farmer  
 Inglis Henry farmer  
 James Wm lab  
 Jett Stephen R butcher  
 Johnson Alex S farmer  
 Katz Albert farmer  
 Kelly Rev John J  
 Kerr Mrs Eliza A  
 Kerr Jas G harnessmkr  
 Knudsen Carl E V  
 Knudsen Chas farmer  
 Larsen Lars lab  
 Latta Edw W Indywkr  
 Linn Geo H farmer  
 Linn Winfred W farmer  
 Lipp Edw J lab  
 Livingston Robt A plumber  
 Locke Edw M farmer  
 Locke Geo H livery and vet surg  
 Locke Howard C farmer  
 Locke Luther J farmer  
 Locke Nathaniel H dairy  
 Locke Niel C farmer  
 Lycan Harry farmer  
 Lycan Wm G farmer  
 McCary Simpson M farmer  
 McPherson Clarence B farmer  
 McPherson Wm farmer  
 Maestretti Andrew R farmer  
 Maestretti Walter farmer  
 Marceau Seraphine  
 Mattice Chester R farmer  
 Maxwell David L farmer  
 Meier Christopher  
 Meier Gottfried farmer  
 Miller Chas farmer  
 Mindach Paul R farmer  
 Mohrmann Chas D farmer  
 Montgomery Chandler R farmer

# STOCKTON MORTUARY

FUNERAL DIRECTORS

374 e 590

202-8 S. California St.

# DOHRMANN WOLF AGENCY

TELS. 113 791  
GENERAL INSURANCE 406 E. MARKET, STOCKTON

**BUY FARM IMPLEMENTS  
MOLINE PLAN**  
See MOLINE PLOW CO.  
1026 E. MAIN ST.  
PHONE 591 STOCKTON, CALIF.

**LOCKEFORD—Continued**

Montgomery John W  
Montgomery Lester M farmer  
Montgomery Winfield S farmer  
Moore Wm P lab  
Morgan Mrs M L conf  
Munger Harris B butcher  
Myers Chas W farmer  
Myers Elwood L farmer  
Myers Howard A farmer  
Myers Perry H farmer  
Nelson Christian marblewkr  
Nelson O T farmer  
Netz Emanuel J lab  
Nixon Byron A lumbermn  
Nunn T M lab  
Overton Edwin  
Parker Jos D Constable  
Parker Thos B farmer  
Patton Henry H lab  
Patton Robt F farmer  
Pearson Saml lab  
Pearson Wm E farmer  
Perino Victor clk  
Peterson Geo farmer  
Pittman Geo M farmer  
Potter Wm H farmer  
Priestley Jos G phys and drugs  
Ragland Horace E lab  
Raines Lester L butcher  
Ray Gustine lab  
Reed Chas blksmth  
Reiss Chas farmer  
Reiss Louis farmer  
Rice Wm C lab  
Rinaudo Frank farmer rt 1  
Roberts Elmer lab  
Roberts Frank A farmer  
Ross Lewis E (Deveglio & Ross)  
Roush Harlo F farmer  
Ryan John L farmer  
Schwartz Henry W farmer  
Scribner Perry B farmer  
Sheaffer B M farmer  
Sheaffer Carey A farmer  
Sheridan Mrs Bell dressmkr  
Sheridan Stephen F farmer  
Smart M F barber

Smith Chas F farmer  
Smith Jas L farmer  
Smith Robt J farmer  
Smith Wm J conf  
Stemler Chas L farmer  
Stemler Geo W farmer  
Stemler Roy farmer  
Strange Leonard P farmer  
Strobridge Salma S cashr  
Swett Mrs Annie M  
Thomas Danl J farmer  
Thomas John farmer  
Thomas Wm A farmer  
Thompson Cyrus farmer  
Thompson Geo E painter  
Thorp Jas E dairymn  
Thurman Geo M farmer  
Tretheway Chas W farmer  
Tretheway Fred H farmer  
Tretheway Geo F lab  
Trent Mrs Edna L  
Union Safe Deposit Bank  
Votaw Clarence E garage  
Wakefield Harry A farmer  
Wakefield Walter H farmer  
Weber Chas K farmer  
Weiblen Frank farmer  
White Corwin D farmer  
Willis Mrs Jane  
Wiseman Newton M lab  
Wittmeier Ed farmer  
Wittmeier Fred farmer  
Wittmeier Henry lab  
Wittmeier Jacob real est  
Young Burris E farmer  
Young John L farmer  
Young Wm L farmer  
Zahn Chas E farmer  
Zimmer Geo blksmth

**LYOTH**

Checcone Gustavo E sec foremn  
Flanigan Jas D towermn  
Harmon Guy I towermn  
Johnson Gomer E clk  
Lowe Wm K lab  
Miller Norman E agt WPRy  
Smith Raymond O towermn  
Standard Oil Co J W Stocking supt  
STOCKING JOHN W Supt S Oil Co  
Western Pacific Ry N E Miller agt

**MANTECA**

Abdallah Paul J rt 1 bx 108  
Abraio Manuel clk  
Addington Edw M elec rt 1  
Aksland Geo A driver  
Aksland Henry M farmer  
Alger Mrs Alice milliner  
Alger Hiram B 2d hd gds



**DURANT  
AND  
PEERLESS  
AGENCY**

**STUART  
MOTORS  
COMPANY  
INC.**

**121-123 N.  
San Joaquin**

**TEL.  
2041  
STOCKTON**

# ROBERT POWELL CONTRACTOR AND BUILDER

PLANING MILL, 945 E. LINDSAY Cor. SACRAMENTO

375 2612 W RESIDENCE PHONE 1298

# SUPERIOR IRON WORKS, INC.

Tel. Lodi 430

Factory and Main Office LODI, CAL.

Manufacturers of Pumps, Pumping and Mining Machinery.

Iron and Brass Founders

**PACIFIC**

**CARPET**

**Cleaning**

**Co.**

**WAZONS**

**Mattresses**

PHONE 2728

330 S. CALIF. St.

MANTECA—Continued  
 Alger Hiram H  
 Allenbaugh Clyde H farmer  
 Allenbaugh Lee opr S S J Irrig  
 Dist  
 Alves & Silva rt 1 bx 195  
 American Ry Exp Co J F Jessee  
 agt  
 Anderson Andrew J (Manteca Mo-  
 tor Co)  
 Anderson Everett V farmer  
 Anderson Jens C plasterer  
 Andregg Casper lab  
 Andrews F rt 1 bx 151  
 Andro Wm M farmer  
 Arbuthnot Geo J rt 1 bx 69  
 Arnold Fredk D rt 1 bx 187  
 Askland Geo  
 Austin Jas H rt 1 bx 90  
 Austin S E rt 1 bx 89  
 Avilar Jos D lab  
 Baccilieri A  
 Baker Alfred rt 1 bx 5  
 Baker Jos W farmer  
 Ballinger Adam J farmer  
 Ballow Frank driver  
 Bank of Manteca Arbor Barth  
 cashr  
 Barrett Jack baker  
 Barth Arbor cashr Bk of Manteca  
 Bates Conley F poultrymn rt 1  
 Bauer Albert C farmer rt 1 bx 8  
 Baur Paul  
 Bayer P rt 1 bx 29  
 Baysinger Danl W carp  
 Bean John W farmer  
 Benson Alvarado A farmer  
 Bernacchi Leo clk  
 Bessac Richd D real est  
 Bettencourt J S rt 1 bx 15  
 Betz Wm conf  
 Bidart P rt 1 bx 56  
 Bingham C W contr  
 Bird Wm (Club Cafe & Audi-  
 torium)  
 Bird Wm G brklyr  
 Bisher Walter E chauf  
 Black D Marshall (Manteca Land  
 Co)  
 Blake Irene asst cashr Bk of Man-  
 teca  
 Blodgett Elmer C plumber  
 Blodgett Mrs Sarah  
 Boberg John A lumber  
 Boberg Stanley clk  
 Bollinger Adam I farmer  
 Boman Gust farmer  
 Boman Lewis G carp  
 Bowen Danl W chauf  
 Bowling John B rt 1 bx 174  
 Brancomb Benj rt 1 bx 38  
 Branson Thos H farmer

Brazil M S rt 1 bx 159  
 Bridges E E farmer rt 1 bx 193  
 Briggs Raymond W lab  
 Bringier Browse T asst cashr 1st  
 Nat Bk  
 Brock Jas lab  
 Brooks Howard R spec agt S Oil Co  
 Brow Frank E druggist rt 1 bx 204  
 Brow Leslie F farmer rt 1  
 Brown Marion P farmer  
 Brownell David W foremn S S J  
 Irrig Dist  
 Buchanan Walter S salsn  
 Buckbee Walter C farmer  
 Burgess J J rt 1 bx 4  
 Burton H lab  
 Busigani E rt 1 bx 117  
 Busigani G rt 1 bx 258  
 Busjaeger Collis F cannery foremn  
 Butcher Jay W bkpr  
 Buthenuth Frank O merchant  
 Buthenuth Geo C mgr Manteca  
 Supply House  
 Byer Jas farmer  
 Byer Jas N Jr barber  
 Byrd Rev John W (First M E Ch)  
 Cail Edw I tel installer rt 1 bx 150  
 Cain C rt 1 bx 115  
 Caine Thos ditch tndr  
 Calif Transit Co L J Duvall agt  
 Callander W C (Manteca Garage)  
 Camisao Anthony (Portuguese-  
 American Realty Co)  
 Campbell Arthur M farmer  
 Candini Caesar lab  
 Caratti Jack J restaurant  
 Carboni Mrs Mary  
 Carboni Tony  
 Cardoza M rt 1 bx 223  
 Carlon Adolph S clk  
 Carlon Mrs Bertha M  
 Carlon Mrs Emma  
 Carlon Maurice A oils  
 Carlon A E rt 1 bx 212  
 Carlon E rt 1 bx 98  
 Carlon Richd farmer  
 Carson C R  
 Casassas A rt 1 bx 126  
 Castle Beverly B farmer rt 1  
 Castle Durrett O rt 1  
 Cater Alfred S lab  
 Cater Geo farmer  
 Cater Geo R house mover  
 Cater Ray eng  
 Cavala Anthony J farmer  
 Cavala John salsn  
 Chaloner Louis B farmer  
 Chamber of Commerce W E  
 Speares sec  
 Chaney Jas E billiards  
 Charles John H vulc  
 Cheek Fredk contr

# E. J. BLANCHARD

DISTRIBUTOR W. P. FULLER &  
 CO. PAINTS AND VARNISH

616 E. MAIN St.

PAINTS, VARNISHES,  
 WALL PAPER, ETC.  
 Painting, Paper Hanging and Tinting

PHONE 465 STOCKTON

**COAL, COKE**  
**BLACKSMITH**  
**COAL**



**HAY, GRAIN**  
PHONE 1002  
730 S. CALIF. ST.

**MANTECA—Continued**  
Chinn Walter rt 1 bx 181  
Christensen Jos salsn  
Christenson M rt 1 bx 99  
Christiansen Chris (Manteca Cream & Butter Co)  
Christiansen Milton C farmer  
Christiansen Peter driver  
City Attorney J R Scott  
City Clerk Mrs Daisy Du Vall  
City Marshal F M Roundtree  
Clark Chas A farmer rt 1 bx 34  
Club Cafe & Auditorium (Geo Flexner Wm Bird)  
Cluck John H real est  
Cochrane Matthew P acct  
Codiga Graziano farmer  
Codiga Peter E lab  
Coe Chas draymn  
Coe Chas O farmer  
Cole Theo S rt 1 bx 51  
Coldeweigh Dedrich farmer  
Collins John H painter  
Colony Aug C clk  
Colosi Jos lab  
Comas T rt 1 bx 23  
Concrete Construction Co (G A Johnson)  
Conklin Benj H watchmn  
Conner Blane painter rt 1 bx 28  
Converse Eugene farmer  
Converse Winfield D farmer  
Corbett Alex farmer rt 1  
Corral A lab  
Cosgriff Mrs Sarah  
Cotrell Chas W driver  
Coumas Thos farmer  
Cowell Apts (J B Lasalle)  
Cowell Arthur W Jr farmer  
Cowell F Marion pres Manteca Pkg Co  
Cowell Joshua farmer  
Cowell Otis M farmer  
Cowell Wm A farmer  
Creighton Chas L farmer rt 1  
Crisp Geo F farmer  
Cross Saml N phys  
Curren Jas E farmer  
Cyr Edgar J lab  
Dalander Emil P farmer  
Dalander Martin S lab  
Darland Chas P farmer  
Daubenbis Harold N salsn  
Davis B rt 1 bx 206  
Davis Edw C garage rt 1 bx 157  
Davis John W dairymn  
Davis Orson E sta opr PG&ECO  
Davis Wm I lab  
Dean Dale E printer  
Dean Jay D (Manteca Bulletin)  
Dedini Danl farmer  
Dedini Wm rt 1 bx 182

Delander Erick P farmer  
Delmege Louie J real est  
Dempsey Jos L rt 1 bx 13  
Dennis Raymond P agt S Oil Co  
Dick Milton H barber  
Dickman Fred J farmer  
Dietz Otto F drugs  
Dietz Walter J lab  
Dike Herman E inspr City Eng  
Dinsmore Fred A farmer rt 1 bx 25  
Dixon Jas lab  
Domingo John lab  
Donato Jos S farmer  
Dos Reis Manuel L banker  
Douglas Eugene E Justice of Peace real est  
Douglas Maurice clk 1st Nat Bk  
Dowhower Francis lab  
Dowhower Grant lab  
Droz C rt 1 bx 208  
Duncan Geo W farmer  
Du Vall Mrs Daisy City Clk  
Duvall Lawrence J agt Calif Transit Co  
Dye Stanley H spec agt U Oil Co  
Dyer Corpus M lab  
Earley Mrs C E rt 1  
Electric Supply Co (J C Kerr)  
Elkins Saml F farmer  
Elliott Byrd lab  
Elliott Chester lab  
Elliott D C farmer rt 1 bx 17  
Elliott Gilbert chauf  
Elliott Glenn D boxmkr  
Elliott Jos W driver  
Elliott Ralph N driver  
Elliott Reuben F meat ctr  
Elliott Wm I lab  
Elliott Wm J ins agt  
Enos Anton pres Enos-Reis Realty Co  
Enos-Reis Realty Co Anton Enos pres M L Reis sec  
Ernst Louis lab  
Erstad Henry S plumber  
Erway Philip J elec  
Erway Ralph J sta opr PG&ECO  
Etcheto Jos baker  
Evans Gomer watchmn  
Fahey Michael E farmer  
Fairbank Ernest G draymn  
Fairbank R N mech  
Fairbank Wm H mach  
Fairbanks Wilfred F garage  
Faller John P lab  
Farmers Grocery Store P S Foster mgr  
Farr Eugene A farmer rt 2  
Farrar Grant rt 1 bx 190  
Fasteas Louis rt 1 bx 102  
Fauls Benj driver  
Ferguson Harry J tailor

**WE CAN COLLECT**  
**ROSS MERCANTILE & COLLECTION AGENCY**  
YOUR OUTSTANDING ACCOUNTS  
**TRY US**  
516 FIRST NATIONAL BANK BLDG.  
FORMERLY YOSEMITE BLDG. PHONE 336

**STOCKTON AUTO SUPPLY CO.** JOBBERS OF AUTO SUPPLIES  
R. D. Heriot, Mgr. 248-50 N. El Dorado, C Miner Av. Phone 17  
377

# SERVICE LAUNDRY

505 N. Sacramento St. Tel. 158. Our Motto: "Better Service" POLENSKE BROS., Props. LODI



**WILLIAMS & LAMBERT**

Accessories...Parts

"THE STAR CAR"

Sales...Service

230 N. SUTTER ST. MASON ROAD KING TRUCKS TELEPHONE 627



MANTECA—Continued  
 Ferrasci Ali dairymn rt 1  
 Ferrasci Angelo dairymn  
 Fewell Homer R tchr  
 Figero Antone farmer  
 Filloon Ed A lab  
 First M E Church (Rev J W Byrd)  
**FIRST NATIONAL BANK Edw**  
**Powers Pres L E Wyatt Cashr**  
 Yosemite cor Hogan  
 Fish Wm H farmer rt 1 bx 252  
 Flexner Geo (Club Cafe & Auditorium)  
 Fly Elmer F farmer  
 Foltz Edw P (Foltz Rendon & Wallace) h Stockton  
**FOLTZ RENDON & WALLACE**  
 (E P Foltz C P Rendon G B Wallace) Attorneys-at-Law Bank of Manteca Bldg  
 Forbes Chas W (Manteca Tel & Telg Co)  
 Foreman P C farmer rt 1 bx 133  
 Forrest Paschal D lab  
 Foster Frank W clk  
 Foster L G rt 1 bx 134  
 Foster Peter S mgr Farmers Grocery Store  
 Fox Chas E clk P O  
 Fox Geo barber  
 Francis Alfred lab  
 Frasier Andrew T  
 Freitas Peter lab  
 Freitas Jos L farmer rt 1 bx 6  
 Fuller Robt P pres Home Lbr Co  
 Fulton W S driver  
 Funch Alfred C farmer  
 Funkhouser Alfred C farmer  
 Gadbury Geo W lab  
 Gaines Howard R farmer  
 Ganoung Edwin creamery  
 Ganoung Ray A dairymn rt 1  
 Garcia John S dairymn  
 Garcia John V barber rt 1 bx 67  
 Garcia M S farmer  
 Garrison Olin H phys  
 Geddes Edw J farmer  
 Ghent Byron J ins  
 Gibson Frank (Chaney & Gibson)  
 Glass Geo B rt 1 bx 31  
 Glasser Chas vulc  
 Glauber Henry G driver  
 Goldberg & Son (Andrew P and Chester L) autos  
 Gomes Peter J butcher  
 Gomes Toney L dairymn  
 Goncalves M rt 1 bx 53  
 Goodden John W A carp  
 Gorham Jas E salsn  
 Gotschall Omer H lab  
 Gould John G rt 1 bx 60  
 Graham Jas D farmer rt 1 bx 85

Graves Gilbert L farmer  
 Graves J Walter (Irrigation District Land Co) Constable  
 Green Harry lab  
 Greenberg Jacob dry gds  
 Greenberg Melvin H bkpr  
 Greenberg Mrs Rae  
 Greer Wm A real est  
 Griffin Bros (Orrin S and Geo E) conf  
 Griffin Wm E clk  
 Grisler Oakley O farmer  
 Groman Jas E salsn  
 Gubbins Jas farmer  
 Gubbins John farmer rt 1 bx 12  
 Guilian G B rt 1 bx 257  
 Gulick Albert D lab  
 Gunderson O M rt 1 bx 238  
 Gustafson Carl A farmer  
 Gustafson Edw farmer  
 Gustafson Harry rt 1 bx 129  
 Gutteridge Edw farmer  
 Hagstrom David farmer rt 1  
 Hagstrom Fred lab  
 Hain Frank J farmer rt 2  
 Hain John G farmer rt 1  
 Hain Wm F farmer rt 1 bx 229  
 Halbert Geo L plumber  
 Hale Ad farmer  
 Hale Annis A farmer rt 1 bx 10  
 Hall Wm A carp  
 Hallberg Carl A bkpr  
 Hanna Saml W chauf  
 Harelson Wm B farmer rt 1  
 Harlan Russell M clk  
 Harris Barney gardener  
 Hartwell Geo E painter  
 Hawkins Saml J carp  
 Hayes Wm E lab  
 Helbakos D rt 1 bx 99a  
 Henry Milton J farmer rt 1 bx 16  
 Henry Ralph L farmer  
 Henson Silas B farmer  
 Herbert Gavin  
 Herlihy Jerry J chf opr PG&ECO  
 Hersey Sidney A lab  
 Hildebrandt L farmer rt 1 bx 227  
 Hill John lab  
 Hines Walter M (Woodward & Hines)  
 Hinkson Andrew B chauf  
 Hinkson Mrs Mary F  
 Hogrefe Ernest H painter  
 Hogrofe Henry lab  
 Hokensen M rt 1 bx 211  
 Holman J D  
 Home Lumber Co R P Fuller pres  
 Hooper Murdock B grain buyer  
 Hotel Waukeen (Mrs Etta Starr)  
 Huarte P rt 1 bx 104  
 Hubbard Fredk chauf

INSURANCE  
 \* LOANS \*  
 RENTALS

**Drown Realty Co**

EXCHANGES  
 INVESTMENTS  
 NOTARY PUBLIC

410 E. MARKET ST.

"HOMES ON EASY TERMS"

378

TEL. 2093



# GLORIA ICE CREAM

"YOU'LL ENJOY IT" OAK and AURORA Sts. PHONE 640

## MANTECA—Continued

Huber's Pharmacy (Jas B and Julius E Huber)  
 Huette Frank X rt 1 bx 96  
 Huette R farmer rt 1  
 Hughes Clarence L farmer  
 Hulbert Frank E painter  
 Hunter Jas S rt 1 bx 186  
 Hyman Henry watchmkr  
 Ingraham Saml M farmer  
 Irrigation District Land Co (J W Graves) real est  
 Isinminger R rt 1 bx 228  
 Jack H S rt 1 bx 59  
 Jack Martin E farmer rt 1 bx 110  
 Jacobson Martin G farmer  
 Jacob Henry G gen mdse  
 Jardin F rt 1 bx 123  
 Jason Arthur (Manteca Battery & Tire Wks)  
 Jason Jos (Manteca Battery & Tire Wks)  
 Jay C E whsmn  
 Jeffries Edgar H civ eng  
 Jensen Andrew A rt 1 bx 215a  
 Jensen Jens C rt 1 bx 241  
 Jensen Niels farmer  
 Jessee J Frank agt Am Ry Exp  
 Jewart David E grocer  
 Jewart John merchant  
 Jewart John M farmer  
 Joaquin A rt 1 bx 46  
 Johnson Carl E farmer  
 Johnson Cecil H painter  
 Johnson Edw R farmer  
 Johnson Fred rt 1 bx 77  
 Johnson Gustaf A (Concrete Construction Co)  
 Johnson John C bkpr  
 Johnson John E farmer  
 Johnson J Clarence foremn S S J Irrig Dist  
 Johnson Lars E rt 1 bx 225  
 Johnson Martin farmer  
 Johnson N T farmer rt 1 bx 95  
 Johnson Oscar rt 1 bx 36  
 Johnson Oscar W carp  
 Jones Francis W water supt  
 Jones Wm C garage  
 Jorgenson N J farmer rt 2 bx 245  
 Joseph John J dairymn  
 Kaiser John farmer rt 1 bx 121  
 Kall Alfred J carp  
 Kall Otto carp  
 Kellenberg Geo painter  
 Kelly Patrick J indywkr  
 Keppel A farmer  
 Keppel Bros (Aaron and Ezra) meats  
 Keppel Garrett farmer rt 1 bx 50  
 Kerkenes Mike restaurant  
 Kerr Jas C (Electric Supply Co)

King A C rt 1 bx 145  
 Kissinger W M rt 1 bx 233  
 Knudsen Carl N plumber  
 Kohn M stockmn  
 Koster Geo H agt Union Ice Co  
 Kraetsch Fred agt PG&ECO  
 Kronhan Martin J (Manteca Lndy)  
 Lablin C Henry gen contr  
 Lacy Albert E rt 1 bx 200  
 Lambert Peter F farmer rt 1 bx 179  
 Lamberty J T agt SPCo  
 Lane Albert lab  
 Larson Andrew farmer  
 Larson Chris farmer rt 1 bx 221  
 Larson Frank W farmer  
 Larson Jas C farmer  
 Larson Jens T (Manteca Cream & Butter Co)  
 Larsen John  
 Larson Nils P farmer  
 Lasalle John B (Cowell Apts)  
 Laurel Jos G barber  
 Lauretzos Geo rt 1 bx 20  
 Lauritson Thos C gen mdse  
 Lavaggi Andrew farmer rt 1 bx 239  
 Lawrence Elisha R farmer  
 Lawrence Jos C farmer  
 Leal Manuel S carp  
 Lebowsky Louis H lab  
 Lee Lucian N farmer  
 Lee Wm H farmer  
 Lemoin Geo T (Manteca Motor Co)  
 Leventon Elwood M (Manteca Bldcksmith Shop)  
 Leventon Robt E (Manteca Blacksmith Shop)  
 Levy Jos farmer  
 Liberty Theatre  
 Lindenstien Mrs Ella  
 Lindhardt Peter rt 1 bx 84  
 Lindsey John M farmer  
 Linn Geo I tchr  
 Litchfield Maro farmer  
 Littlejohn Chas E farmer  
 Littlejohn Donald C rodmn  
 Littlejohn Jas K lab  
 Littlejohn Roy E farmer  
 Locher Jos A painter  
 Long Vernon W poultrymn  
 Lopes M A rt 1  
 Lopez Manuel A real est  
 Louis Jos P eng  
 Loumena Henri indywkr  
 Lowe Edwin farmer rt 1 bx 65  
 Lucas Manuel V farmer  
 Luchi A rt 1 bx 112  
 Luck J M tchr  
 Lyman Chas W watchmkr  
 Lyons A M rt 1 bx 76  
 McAdam Walter B carp  
 McAdams Fred lab  
 McAfee Jas M farmer

CHINN & BERETTA OPTICAL CO.  
 407 E. MAIN  
 CHINN & BERETTA

THOUSANDS of people in San Joaquin County have purchased or built their homes by availing themselves of our loan system. WHY NOT join those happy home-owners we have helped? **SAN JOAQUIN VALLEY BUILDING THEY WILL BE INDEPENDENT IN OLD AGE. & LOAN ASSN. 11 S. HUNTER**  
 IF YOU WISH TO SAVE—WE PAY 6% AND 7.2%. TEL. 154 A. M. No. 379

# CHAS. F. THOMPSON GENERAL INSURANCE

NEW ENGLAND MUTUAL  
LIFE INS. CO.

710 to 711 F & M Bldg. Tel. 6156

EXCLUSIVE AGENCY

**HARTMANN TRUNKS**

Traveling Bags. Suit Cases.

*Schwartz's*  
LUGGAGE SHOP

305 E. WEBER AV.  
STOCKTON

LADIES' HAND BAGS  
LEATHER NOVELTIES



**MANTECA—Continued**

McBrian Kenneth D men's furngs  
McCabe Jos E sec Manteca Can-  
ning Co  
McCallister Henry C farmer rt 1  
McCord Floyd M dentist  
McCumber Lester L vulc  
McDonald John W carp  
McDonough Clarence R lab rt 1  
McFall Lucky  
McGandy John farmer  
McGinety Geo W jan  
McHaley Jas M carp  
McIntyre Mrs Annie B  
McIntyre Chas G farmer  
McKenzie D R foremn rt 1 bx 259  
McKenzie Lawrence M lab  
McKinney Benj F eng  
McKinney Benj W lab  
McLain Oliver H mech  
McQuaid Owen rt 1 bx 7  
Machado I F rt 1 bx 224  
Machado J J rt 1 bx 237a  
Machado J S rt 1 bx 163  
Mahin Jas eng  
Malyn Clifford F sign writer  
Manteca Battery & Tire Works  
(Arthur and Jos Jason)  
Manteca Blacksmith Shop (R E  
and E M Leventon)  
**MANTECA BULLETIN (J D  
Dean) 309 W Yosemite**  
Manteca Cleaning Co Edw Powers  
pres-mgr J E McCabe sec  
Manteca Cheese Co Roy Simmons  
mgr  
Manteca Cream and Butter Co  
(Chris Christiansen J T Larson  
Floyd Richards)  
Manteca Garage (W C Callander  
Henry Womersley)  
Manteca Improvement Co W A  
Greer agt  
Manteca Land Company (D M  
Black)  
Manteca Laundry (M J Kronhan)  
Manteca Motor Co (A J Anderson  
G T Le Moin)  
Manteca Packing Co Edw Powers  
mgr  
Manteca Seed and Grain Co A S  
Paul mgr  
Manteca Supply House G C Buthe-  
nuth mgr  
Manteca Telephone & Telegraph  
Co (C W Forbes)  
Manteca Warehouse Edw Powers  
mgr J E McCabe sec  
Marchisio Rev John (St Anthony's  
Ch)  
Marchitelli Frank grocer  
Mathews Geo B farmer

Maurer Wm P farmer rt 1  
Maxey Wm A lab  
Mayberry Jefferson D lab  
Medina M rt 1 bx 144  
Mendosa John A shoes  
Meredith Geo H dentist  
Merritt Chas E farmer  
Meunier E farmer rt 1  
Mewborn Max H meats rt 1 bx 184  
Mewborn Thos J butcher  
Mikesell Wm M real est  
Miller Frank A meat ctr rt 1  
Miller Mark W farmer  
Miller Philip G farmer  
Miller Saml E mgr Spreckels Su-  
gar Co  
Miller Spencer D eng  
Miller Warren S farmer  
Miller Wilbert E conf  
Millhouse David C shoemkr  
Milner Mrs Margaret  
Mineo A rt 1 bx 194  
Minor John C meat ctr  
Mocettini A rt 1 bx 68  
Mocher M rt 1 bx 121a  
Moniz F farmer  
Monroe Emery lab  
Monroe Jesse R carp  
Monson Milo M mech  
Monson Swan L farmer  
Moore Robt E farmer  
Moore Wm O bkpr  
Morgan Mrs Myrtle  
Morganis Chris rt 1 bx 100  
Morris Arnold H farmer  
Morris Wm A farmer  
Mott Glen F farmer  
Mozetti Frank farmer  
Muller Henry C farmer  
Munier M rt 1 bx 70  
Murphy Ray J farmer  
Napier John J rt 1 bx 21  
Nascimento Peter F farmer  
Nelson Andrew E farmer  
Nelson Fred O rt 1 bx 40  
Nelson Linn J E farmer  
Nelson Paul E farmer rt 1 bx 226  
Newman M Irwin mach  
Newton C M tchr  
Nichols Jas B  
Norberg John O rt 1 bx 39  
Norberg J Victor grocer  
Norman Chas A clk  
Noyer Harry F farmer  
O'Connell Jas farmer  
Olden Edwin L  
O'Leary Fred S vet surg  
Oliver Clayton E ins  
Oliver Wright dep Marshal  
**OLYMPIC POOL AND BILLIARD  
PARLOR (Frank and L P Trig-  
lia) 137 W Yosemite Tel 891**

# KRIEGER MOTOR COMPANY I. G. KRIEGER

PHONE 448

380 HORIZONTAL AND SERVICE Lincoln Ford Fordson 115-19 S. Sacramento St., Lodi

**CARPET** CLEANING  
LAYING  
REFITTING  
**MATTRESS MAKING**  
**RENOVATING**  
**UPHOLSTERING**

**MANTHEY TENTS**  
**AWNINGS**  
**CANVAS GOODS**  
**420 BROS.** Phone **411**  
N. Calif. St.

**MANTECA—Continued**  
O'Meara Wm baker  
Omundson C rt 1 bx 234  
Orem Chas P rt 1 bx 178  
Ortiz Edw tailor  
Osborn J O lab rt 1 bx 4a  
Overshiner Jesse J farmer  
Owens O B mach rt 1 bx 48  
Pacific Gas & Electric Co Fred  
Kraetsch agt  
Pahre Edw R (San Joaquin Val  
Land Co)  
Palm Carl F farmer  
Palm Julius bldg contr  
Palmberg John A farmer rt 1 bx  
214  
Park Delia rt 1 bx 22  
Parker Geo K constr eng  
Parr Jas W lab  
Parr Willis B driver  
Pasquonelli Frank clk  
Patterson Thaddeus E farmer rt 1  
Paul Arthur S mgr Manteca Seed  
& Grain Co  
Pearce Henry J rt 1 bx 87  
Pearson Christian farmer  
Pederson Peter  
Pelton Stephen G real est  
Pennebaker Albert G real est  
Pennebaker Wm F v-pres Manteca  
Pkg Co rt 1  
Pennebaker W H rt 1 bx 35  
Peo Motor Co L V Peo mgr  
Percival Dewey V salsn  
Perry Delphino V farmer  
Perry Edw O garage  
Perry F rt 1 bx 106  
Perry Wm R clk P O  
Peterson Gilbert rt 1 bx 230  
Peterson Peter farmer  
Peterson P P rt 1 bx 32  
Pettis Floyd E lab  
Pico Edw F excavating contr  
Pierson Wm E farmer rt 2 bx 246  
**PLATT REV J WESLEY (Breth-**  
**ren) P M**  
Platt Saml F farmer rt 1 bx 103  
Plouff Chas blksmth  
Plouff Elden mech  
Plouff Mrs Inez H grocer  
Porter Henry I agt Stkn Record  
Portuguese-American Realty Co (J  
E Rafael A Camisao)  
Post Office Rev J W Platt P M  
Potts Harry F farmer  
Potts Wm H mech  
Poulis Frank D rt 1 bx 58  
Poulis Geo rt 1 bx 196  
Powers Edw pres-mgr Manteca Pkg  
Co)  
Presher John D conf  
Preuss Alice B lawyer

Proud Richd T farmer  
Proud Robt farmer rt 1 bx 176  
Rafael John E (Portuguese-Amer-  
ican Realty Co) men's furngs  
Raines W Harry farmer  
Rains Saml soft drinks  
Rains Shelah B lab  
Ramsey Geo A lab  
Ramsey Guy M lab  
Ramsey Wm C farmer  
Ranes W H rt 1 bx 1  
Rawleigh Jas A billiards  
Rawleigh Jas J clk  
Reed Hartwell H lab  
Reed John H farmer rt 1  
Regelo A G farmer rt 1 bx 43  
Reis Ados v-pres Enos-Reis Realty  
Co  
Reis Manuel L asst cashr First Nat  
Bk  
Rendon Cecil P (Foltz Rendon &  
Wallace) h Stockton  
Rennels Ora C lab  
Reynolds Chas E farmer  
Reynolds Edw E farmer rt 1  
Reynolds Geo R farmer rt 1 bx 142  
Reynolds John G farmer rt 1 bx  
137  
Reynolds Truman E farmer  
Rhinehart Jos rt 1 bx 119  
Rhoades Jas H farmer  
Rhoades Ralph J rt 1 bx 149  
Rice Elmer R carp  
Rice Jehu W  
Richards Floyd F (Manteca Cream  
& Butter Co)  
Rienhart Frank farmer rt 1  
Robertson R F lab  
Robinson Chas A farmer  
Roblin Arthur T conf  
Rodrigues Wm rt 1 bx 30  
Rosengren John W farmer  
Ross Chas H printer  
Roundtree Frank M City Marshal  
Rourk John R lab  
Russell Dean H opr S S J Irrig Dist  
Rutan Byron V mech  
Ryce Mrs E R clk H G Jacot  
Salmon Adolph T rt 1 bx 203  
Salmon Alfred farmer  
Salmon Claude D driver rt 1 bx 27  
Salmon Everett E farmer rt 1 bx  
185  
Salmon Geo R farmer rt 1 bx 153  
Salmon M rt 1 bx 156  
Salmon Ray L farmer  
San Joaquin Valley Land Co (E R  
Pahre Mara Litchfield)  
Sawdon Saml W foremn S S J  
Irrig Dist  
Sayers Arthur B rt 1 bx 158

**SAN  
JOAQUIN**

**D  
E  
T  
E  
C  
T  
I  
V  
E**

**BUREAU**

**J. T. MCKINDSEY  
MANAGER**

**LICENSED AND  
BONDED**

**Correspondents  
in all principal  
cities**

**PHONE  
2168**

**SMITH &  
LANG BLDG.  
STOCKTON, CAL.**

**Carey**  
**FIBEROCK**

Asbestos Roofing  
PHONE 24

**ROOFINGS of Every Kind**

ASBESTOS SHINGLES, BUILDING PAPER, SLATE  
ROOFING, DEADENING FELT, EXPANSION JOINTS

**SIMPSON-GRAY LUMBER**  
COMMERCE AND SONORA STREETS



381

# VALLEY LAUNDRY

A. M. CLINE - - - - Pres.  
C. N. HODGES - V-Pres.  
W. D. HUFFAKER - Sec.  
We Use 'Refinite' Softened Water Only

Tel. 381. 1235 E. Lindsay St.



Southwell-Hunter Auto Co.

245 N. El Dorado Street  
Stockton



## MANTECA—Continued

Schafer Chas H asst supt S S J  
Irrig Dist  
Schafer C rt 1 bx 165  
Schafer Fredk W L farmer  
Schmiedt David farmer rt 1 bx 243  
Schmiedt Gus G rt 1 bx 240  
Schnell B rt 1 bx 73  
Schnell J rt 1 bx 73  
Schreder Victor pump opr  
Schumm Leonard E clk  
Schumm Leonard G farmer  
Scott Mrs David rt 1 bx 164  
Scott Joel R lawyer  
Segret Emile P jeweler  
Shacten Wm H patrolmn  
Sharp Ralph J bldg contr  
Siebecke A rt 1 bx 61  
Silford Chas A farmer  
Silva G M  
Silva Manuel B farmer  
Silva M rt 1 bx 237  
Silveira Joaquin L  
Silveira Jos salsn  
Silvers Anton lab  
Silvers John M rt 1 bx 79  
Simas J T rt 1 bx 227a  
Simmons Edgar C plumber  
Simmons J W farmer rt 1 bx 14  
Simmons Roy mgr Manteca Cheese  
Co  
Simon Michael A real est  
Slayton Chas W (Irrigation Dis-  
trict Land Co)  
Slayton Wm clk  
Slayton Willis F mech  
Smith Mrs Bertha  
Smith Jas W lab  
Smith John G shoemkr  
Smith Marshall D oil rt 1 bx 78  
Solomi John lab  
South San Joaquin Irrigation Dis-  
trict C W Woods chf eng  
Southern Pacific Co J T Lamberty  
agt  
Souza John A salsn  
Souza Manuel E farmer  
Spangenberg Herbert inspr  
Speares W E sec Cham of Comm  
Speer Wm E salsn  
Spreckels Sugar Co S E Miller mgr  
Sproston S rt 1 bx 114  
Standard Oil Co H R Brooks agt  
**STAR AGENCY 230 N Sutter**  
Stockton  
Starr Edw C linemn  
Starr Mrs Etta (Hotel Waukeen)  
Starr Fred C cigarmkr  
Stouder Jos F lab  
Stenlund Peter farmer  
Stenmark Ernest paints  
Stenmark J A rt 1 bx 74

Stephenson Chas rt 1 bx 81  
Stetler Floyd E mgr Stkn Hdw &  
Implt Co  
Stetler J Leroy carp  
Stewart Albert R sausagemkr  
Stockton Hardware & Implement  
Co F E Stetler mgr  
Stockton Record H i Porter agt  
Stretch Wm F merchant  
Strohmaier Edgar A mgr  
Stuckey Britt C carrier rt 1  
Sullivan Ernest W expmn  
Sullivan John A rancher  
Sutliff Chas L farmer  
Sutliff Clarence  
Swanson Geo W clk  
Swanson Mrs Helen  
Swanson Sidward driver  
Taglibue E rt 1 bx 188  
Talbot Cyrus G farmer rt 1  
Tally Mrs Eliza A  
Taylor Geo A farmer  
Temple E farmer rt 1  
Tener Hugh T clk H G Jacot  
Tharp Jos H field supt Spreckels  
Sugar Co  
Thomas Floyd E farmer  
Thompson Raymond B farmer  
Thompson Thos F farmer  
Thor Frank B 2d hd gds  
Thornton Geo N elec  
Thorson Edw mgr  
Thran Ernest farmer  
Tidewater-Southern Ry Co J A  
Wilson agt  
Tinnin Jos L rt 1 bx 255  
Tollestrup Walter E farmer  
Toomey Jas M real est  
Trailer Frank lab  
Tredler Robt J  
Trettheway Lester E phys  
Triglia Frank (Olympic Pool &  
Billiard Parlor)  
Triglia Leo P (Olympic Pool &  
Billiard Parlor)  
Triglia Tranquill F lab  
Trombetta Chas G teller First Nat  
Bk rt 1  
Trombetta F rt 1 bx 122  
Truman Maurice btblk  
Tugel F rt 1 bx 132  
Tugel Gustav farmer  
Tugel Louis W farmer  
Turner Jas farmer rt 1 bx 135  
Turner Wm G farmer  
Union Ice Co G H Koster agt  
Union Oil Co S H Dye spec agt  
Valsom Geo barber  
Van Houser Mrs Alice T  
Van Houser Bernard F linemn  
Van Loan Herbert W farmer  
Van Syckle Chester W carp

# THE LODI NATIONAL BANK

COMMERCIAL - SAVINGS - SAFE DEPOSIT

382

PINE COR. SACRAMENTO ST.  
TEL. 77 LODI, CAL.

# MILLS MERCANTILE AGENCY

710 COMMERCIAL BANK BLDG.

PHONE 2442

L. A. MILLS, Attorney

COLLECTIONS ANYWHERE Send Us Your "Slow Pay" Accounts

## MANTECA—Continued

Van Syckle David H carp  
 Vest Ernest E rt 1 bx 63  
 Vest John L blksmith  
 Vest Wm L lab rt 1 bx 64  
 Vierra Frank garage  
 Vierra Frank S Jr mech  
 Vierra Jos W sta opr PG&ECO  
 Vierra Manuel F  
 Volterza Joe rt 1 bx 130  
 Voorheis Bion farmer rt 1 bx 170  
 Voorheis Claude G farmer  
 Vossos Andrew  
 Waclawinek M K farmer  
 Wagner John barber  
 Waldorf Rooms  
 Wallace Alfred W rt 1 bx 139  
 Wallace Ernest T farmer  
 Wallace Gerald B (Foltz Rendon  
 & Wallace) h Stockton  
 Wallace Harold W supt rt 1  
 Wallace J W rt 1 bx 234a  
 Wallace Robt M farmer  
 Walter Nicholas garage  
 Walfers Matthew plumber  
 Walther Chris blksmith  
 Waltz Claude P brklyr  
 Wampler Chas F foremn Spreckels  
 Sugar Co  
 Wampler Geo F lab  
 Warner Carl farmer  
 Warren Ernest E rt 1 bx 11  
 Waters Jacob K blksmith  
 Watts Jesse H rancher  
 Weaver John L  
 Wehe Frank E farmer  
 Wells Albert J carp  
 Wetherbee Geo W farmer  
 Wheeler Earl N farmer  
 Whelan Clark lab  
 Whelan Howard N farmer  
 Whitaker A J vet surg  
 White Earl A rt 1 bx 61a  
 White Edw J rt 1 bx 201  
 Whiteside Harvey W mach  
 Whittam Benj F millmn  
 Williams Bert V farmer rt 1  
 Williams C F farmer rt 1  
 Williams Edw farmer  
 Williams Frank J rt 1 bx 91  
 Williams Geo E asst cashr Bk of  
 Manteca  
 Williams Mrs J H farmer rt 1 bx  
 180  
 Williams Orrin H mech  
 Williams Owen J farmer  
 Wilson's Cash Store (Edw W and  
 Burton G Wilson) grocers  
 Wilson Geo M dairymn  
 Wilson Jas A farmer rt 1 bx 127  
 Wilson Jos A agt T-SRy  
 Windsor Sydney A rt 1 bx 66

Wing Jas A farmer rt 1 bx 136  
 Wise R R eng  
 Witherell Josiah H farmer  
 Wolter Nicholas (City Garage)  
 Womersley Henry (Manteca Ga-  
 rage)  
 Wonacott Edw E painter  
 Wood Clyde W chf eng S S J Irrig  
 Dist  
 Woodward Harry L farmer rt 1 bx  
 215  
 Woodward Walter J real est  
 Wright Geo W agriculturist  
 Spreckels Sugar Co  
 Wright John G clk  
 Wyatt L E cashr First Nat Bk  
 Xenos M rt 1 bx 124

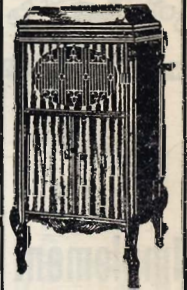
## MIDDLE RIVER

BIGLOW DAVID C O Supt R L &  
 N Co  
 Bridgford Kenneth K farmer  
 Byers Jas G agt Santa Fe  
 Cantrell David N farmer  
 Cantrell Fred C farmer  
 Cates Andrew J elec  
 Cates Jos clk  
 Churchill Harold asst supt RL&N  
 Co  
 Cunningham John sec foremn San-  
 ta Fe  
 Escobar Tony clk RL&NCo  
 Fallman Frank A lab  
 Forbes W A farm supt  
 Healy Fred H ferrymn  
 Jones Jas H bridge tndr  
 Jones Walter S bridge tndr  
 McCray Dee supt RL&NCo  
 Mahaney G E bridge tndr  
 Mahoney Henry bridge tndr  
 Mann Tilson O bridge tndr  
 Milliken Horace F farmer  
 Nylen Berger elec  
 Palmer W G bridge tndr  
 Reed Chas W farmer  
 Reinking Martin D farmer  
 Rinding Land & Navigation Co D C  
 O Biglow supt  
 Santa Fe Ry J G Byers agt  
 Thomas J A agt Santa Fe (Or-  
 wood)  
 Wolf Galen A farmer

## PETERS

(See also Lockeford)

Alden G poultrymn  
 Antonini Nick G farmer  
 Ball W E carp  
 Barrera Emilio farmer  
 Blake Mary H farmer



**Brunswick  
 PHONOGRAPHS  
 VICTROLAS**



**'AMPICO'  
 AND OTHER  
 PIANOS**



**GRAND  
 PIANOS  
 McNEIL**

**& CO.**

**630 E. MAIN ST.  
 TEL. 735**

# STOCKTON SHEET METAL WORKS

All Kinds of TIN, COPPER and GALVANIZED IRON - W 383

37 N.  
 American St.  
 Phone 354

# HOME LAUNDRY

PHONE 164

"YOUR BEST FRIEND"

432 E. Channel St.

FINISHED WORK UNEXCELLED. DRY WASH AND ROUGH DRY



John  
Deere  
Implement  
Co.

Plows  
Harrows  
Tractors  
Planters  
Seeders  
Cultivators  
Hay Tools  
Mowers  
Rakes  
Harvesters  
Wagons  
Hardware

811 E. WEBER AV.

Phone 1531

R. L. BERVE, Mgr.



**PETERS**—Continued  
Bottini Mrs Silvia  
Buscaglia Antonio farmer  
Cartwright Geo L rancher  
Cartwright Jay W rancher  
Cartwright Ray W dairymn  
Cartwright Reeve R stockmn  
Cavagnaro Frank gardener  
Dalton Thos  
Fillipelli Jos gardener  
Flozo Geo poultrymn  
Gruwell Robt C farmer  
Hamilton Jesse farmer

**HAMMOND MRS ALICE** Gen  
Mdse and P M

Hammond W J farmer  
Hickox Edw E farmer  
Johnson Fred farmer  
Lagorio John L farmer  
Lauer Thos cook  
Leibes Fred mech  
Leshar Isaiah farmer  
Lopez Edw lab  
McAfee Clifford molder  
Mayn John W harnessmkr  
Nava Alex farmer  
Parker Frank F farmer  
Parker John V farmer  
Patrick John farmer  
Peterson Wm M F mach  
Prato Jas A gardener  
Riba Vincent farmer  
Richey Everett A farmer  
Rodstrom Chas carp  
Sanguinetti Andrew B farmer  
Sanguinetti Geo A farmer  
Sanguinetti Jas S farmer  
Sanguinetti Louis F farmer  
Sanguinetti Paul J farmer  
Sanguinetti Stephen farmer  
Scheffel Hugo B O farmer  
Shupert John farmer  
Sola Andrew J farmer  
Sola Jos B farmer  
Solari Geo T mech  
Solari Jas B farmer  
Solari Mrs Louisa farmer  
Thorne Walter farmer  
Warner Wm E E farmer  
Williamson J W miner

## RIPON

Absher B D driver  
Acker Henry farmer  
Acker Mrs Maude libr Ripon Libry  
Ahlberg Oscar farmer  
Ahlers Geo farmer  
Ahlgren Harfred N farmer  
Ahlgren Nils E farmer  
Albera Chas L farmer rt A  
Alexander Jas H farmer rt A

Anderson Albert J  
Anderson Chas P vineydst rt A  
Anderson Clifford S elec  
Anderson C J agt S Oil Co  
Anderson John M merchant  
Anderson Jos farmer  
Anderson Peter E farmer  
Andrews Walter O fremn  
Andriese John painter  
Arroquy John farmer rt A  
Arvidson Mrs David farmer  
Asklund A B farmer rt A  
Austin Leslie W farmer rt 1  
Avila Jos J farmer rt A  
Avink Henry farmer  
Ayers H E farmer rt A  
Bailey John W  
Bainbridge Edw D farmer  
Bainbridge Geo K farmer  
Baker Carlos S farmer  
Baker Downe mach  
Baker D S farmer  
Baker Jas C farmer  
Ballou Edwin C farmer rt A  
Bane Haven K farmer  
Bank of Ripon H L Dickey pres  
A R Magruder cashr  
Baptiste M T farmer rt A  
Bartholomew Henry farmer  
Barton W W farmer rt A  
Bava John farmer rt A  
Beck Geo A farmer rt A  
Beckel Louis G farmer  
Bellquist Franz E farmer  
Bengston Edw farmer  
Berberian Hartoon A farmer rt 1  
Berg A M farmer  
Berg Geo L farmer  
Berg Ole L farmer  
Bertoni L farmer rt A  
Bianchi A farmer rt A  
Bianchi F P farmer rt A  
Bianchi Geo supt Swett's Nursery  
Bianchi Peter farmer rt A  
Bidou John B farmer  
Biser F C farmer rt A  
Blanco M lab  
Bland Geo R janitor  
Bliss Warren H farmer  
Bodeson Francis C carrier rt A  
Bodeson Francis L agt  
Bodeson Jos A tmstr  
Bodeson Oscar A farmer  
Bodeson & Hutchinson (Francis L  
Bodeson F H Hutchinson) real  
est  
Bonnett Jos W farmer  
Borgas Mike farmer  
Borges Albert W farmer rt A  
Boscovich John lab  
Boscovich Nicholas lab  
Bouma Geale H cementwkr

PHONE 880

343 E. WEBER AV.

# STITT'S-SATISFACTORY-SERVICE

384

— WE INSURE ANYTHING —

# MOTOR SHOP

## Electric Motors

REPAIRED, REWOUND, INSTALLED, SOLD OR RENTED  
PUMPING and LIGHTING PLANTS

C. E. STANLEY, Prop. 511-13 CHANNEL ST. PHONE 948

RIPON—Continued  
Bowen David M lab  
Bowman D H farmer rt A  
Bowman G H farmer  
Bowman Noah W farmer rt A  
Brace Robt W phys  
Brackett Edmund W farmer rt A  
Bradley Chas D farmer rt A  
Bradley Ernest farmer rt A  
Bradley Roy farmer rt A  
Bradley Wm E farmer  
Braghetti Val farmer rt A  
Brandt Merinus farmer rt A  
Branson Richd W farmer rt A  
Brink Benj farmer  
Broberg C W farmer  
Brochema Wm W farmer rt A  
Brochema Wm W Jr dairymn rt A  
Brogger Erick farmer rt A  
Brogger John farmer  
Brooks Henry C farmer  
Brooks Richd A farmer  
Brower Mrs Frank  
Brown F Sewall farmer rt A  
Brown Geo W farmer rt A  
Brown Joel V farmer rt A  
Brown Leland F farmer rt A  
Brown Mrs Maria E  
Brown Marion P farmer  
Brown Nathan L farmer  
Brown Rodger D farmer rt A  
Brown Verne B tchr  
Bru E J farmer rt A  
Brunner Kenneth P agt SPCo  
Brunold Peter farmer rt A  
Buck Geo A farmer  
Buddingh Garrett J farmer  
Burger Danl A farmer  
Burger John farmer rt A  
Burger Wm H farmer rt A  
Burns J M farmer  
Buscco M farmer rt A  
Busch C C bldg contr rt A  
Busch Walter farmer  
Bush Frank H farmer  
Butts J R farmer rt A  
Byjerum J farmer rt A  
Cabral John farmer  
Caffey Arthur L farmer  
Caffey Roy E farmer rt A  
Calais Geo W butcher rt A  
Caldwell Edw S painter  
Caldwell Harry painter rt A  
Calif Transit Co S Peard agt  
Campbell E E oils  
Capps Mrs Etta baker  
Capps J Harl barber  
Cardoza M farmer rt A  
Cardoza Tony farmer  
Carey N M farmer rt A  
Carrol M O farmer rt A  
Carter Jas W farmer rt A

Caswell Wallace farmer rt A  
Catramis Nicholas W farmer rt A  
Cavalero Frank farmer rt A  
Cedergreen H farmer rt A  
Cedergren Carl W carp  
Cedergren Edw H farmer  
Cedergren Wm farmer rt A  
Chapman Frank H carp rt A  
Charlotte E C farmer rt A  
Chivalleri A farmer rt A  
Christenson Peter farmer rt A  
Ciari Peter J farmer rt A  
Clayton Guy F farmer rt A  
Clendenin Geo H farmer rt A  
Clendenin Hugh farmer rt A  
Clinton Edw F farmer rt A  
Cochrane Robt farmer rt A  
Cohelo Manuel M farmer  
Collins Frank W farmer  
Combs J E farmer rt A  
Cook Mrs Margaret  
Cook Wm F farmer rt A  
Cookson Saml T farmer rt A  
Copp F F mgr New England Calif Farms Co  
Costa Manuel T farmer  
Cover John I farmer rt A  
Cowell Lester M farmer  
Coy Pete farmer rt A  
Craig T Malcolm farmer  
Crawmer Wm J farmer rt A  
Curtis Mrs Birdinia  
Cusick Jas M farmer rt 2  
Daubin Maurice M mgr Kewin Lbr Co  
Davis Bros (Harold T and Geo R) hdw  
Davis Rev Chas H (Congregational)  
Day Chas W farmer  
Dedini Peter farmer  
De La Mater John J farmer  
De Linder Byron farmer  
Denton Paul R tchr  
De Vee Monroe soft drinks  
Devonshire Ernest lab  
De Young Albert J asst cashr First Nat Bk  
De Young Jacob farmer rt A  
De Young Thos farmer rt A  
Dickey Hugh L pres Bk of Ripon  
Dinsdale John E farmer  
Dodge Geo W farmer rt A  
Dolling Frank W meats  
Dorroh John S farmer  
Dosio Giovanni farmer rt 1  
Dosio Jos farmer rt A  
Douma Andrew grocer  
Dowling David A shoemkr  
Durrer Ben farmer rt A  
Du Vall Bruce R mgr Ripon Lbr Co

**W. P. FULLER & CO.**  
 218-24 S. Aurora St.  
 STOCKTON  
 Oils, Colors, Varnishes, Etc.  
 PIONEER WHITE LEAD PAINT PREPARED PACIFIC RUBBER PAINT  
 Manufacturers and Dealers in

# THE PEOPLES FINANCE AND THRIFT CO.

PHONE 648

OF STOCKTON, CA

GRANVILLE T. STOREY, MGR.

Loans to Salaried People

385

648 E. MAIN ST.

**DIETRICH****RENTALS  
FARM LANDS****&****REAL ESTATE  
GEN. INS.****LEISTNER****26 S. SAN JOAQUIN****W.  
J.  
NARON****FURNITURE  
CARPETS  
DRAPERIES****Wedgewood  
Stoves and  
Ranges****410-18  
E. MAIN  
STOCKTON,  
CALIF.****PHONE 2182****RIPON—Continued**

Easey Chas A farmer rt A  
 Eastburg Victor E farmer  
 Edwards A J farmer rt A  
 Eggink Fred W farmer rt A  
 Emerson John A watchmn  
 Engberg Fremond N farmer  
 Enos A farmer  
 Erickson Frank L  
 Erickson H farmer rt A  
 Estabrook Handy farmer  
 Evenson Edwin W farmer  
 Evinger Jacob L farmer rt A  
 Fagundes Joe farmer  
 Farschon John W blksmith  
 Farschon Wm A farmer  
 Faust Rastus farmer rt A  
 Feller John farmer rt A  
 Field Roy M farmer  
 Filloon Geo A rt A  
 First National Bank C A McBrian  
 pres T C Smethers cashr  
 Fisher Redwood W farmer rt A  
 Fisher Wm I K farmer rt A  
 Fitzgerald Chas R farmer  
 Flora John J farmer rt A  
 Fogle C Leroy farmer rt A  
 Foida Jos F farmer rt 2  
 Fokens Herman carp  
 Foltz Edw P (Foltz Rendon & Wal-  
 lace) h Stockton  
**FOLTZ RENDON & WALLACE**  
 (G P Foltz C P Rendon G B  
 Wallace) Attorneys-at-Law 1st  
 Nat Bank Bldg  
 Foster John J farmer rt A  
 Foster Lyle L farmer  
 Foster Moses N farmer rt A  
 Foust Rastus farmer  
 Fox Frank A farmer  
 Fox Hugh S salsn  
 Frasier Wm farmer  
 Frazier Andrew T farmer rt A  
 Frazier Forest farmer rt A  
 Frazier Zeal farmer  
 Frederick Mrs B Genoa bkpr  
 Frederick Chas farmer rt A  
 Frederick John W H farmer rt A  
 Frederikson John T painter  
 Frenzia Bros farmers rt A  
 Freshour Arthur D lab  
 Freshour Wm A lab  
 Gall Mansfield E farmer  
 Garcia John S farmer rt A  
 Garrett Albert real est  
 Garrett Wm B farmer  
 Garrison John farmer rt A  
 Garrison John W butcher  
 Gemmer J W farmer rt A  
 Gilbert J Huber whsmn  
 Gilbert Oren S salsn  
 Gilvere Thos farmer rt A

Ginn J B iarmer rt A  
 Glauber Henry farmer rt A  
 Goetz Herman farmer rt A  
 Gonsalves Jose V farmer rt A  
 Ganzalves A J farmer rt A  
 Goodman E A jeweler  
 Goodwin Albert D  
 Goodwin B A farmer  
 Goodwin Elmer B farmer rt A  
 Goodwin Mrs Gertrude  
 Goodwin Irwin A mach  
 Goth Oscar lab  
 Gotshall & Magruder (A R Ma-  
 gruder) cattle loans  
 Goularte Domingos M farmer rt A  
 Gould Ned B phys  
 Graham Avon shoemkr  
 Grant G A farmer rt A  
 Graves Frank farmer rt A  
 Gray Joe farmer rt A  
 Green Geo F (Ripon Telephone Ex-  
 change)  
 Green Thos J driver  
 Greenfield Wm dairymn  
 Greenlee W farmer rt A  
 Groetsema Manning janitor  
 Grogan Bernard farmer rt A  
 Grogan Jas L lab rt A  
 Gross Mrs Cornelia farmer rt A  
 Gross John E farmer rt A  
 Groves Robt C farmer  
 Groves Robt H farmer rt A  
 Grubaugh Clyde E plumber rt A  
 Grubaugh Marion F farmer  
 Gustafson John benchhd  
 Hackett Stewart farmer  
 Hagerman Carl farmer rt A  
 Haglund Ernest farmer rt A  
 Haines Geo A rt A  
 Hallberg Carl A bkpr  
 Hals Bros (B O and S J) farmers  
 Hansen Alvin  
 Hard Jean W  
 Hard Lee R farmer  
 Hardie J H farmer rt A  
 Hardie Theo J farmer rt A  
 Harms L Russell lab  
 Harms Peters J farmer  
 Harms Russell L lab  
 Harp Homer farmer rt A  
 Harry Irwin W butcher rt A  
 Harry John M  
 Harter Geo farmer rt A  
 Hasbrouck J  
 Hastings Gilbert farmer  
 Hathaway Fred rt A  
 Haubrick Benj F eng rt A  
 Houston Jas farmer rt A  
 Headley John E farmer  
 Hearty Chas farmer  
 Hearty Thos F farmer rt A  
 Heck Edw

**EXTRA COPIES of this DIRECTORY**Can be secured  
by addressing**R. L. POLK**

386

**CO.****P. O. BOX 687  
SACRAMENTO, CAL**



# B. C. WALLACE MORTICIAN

TEL 2591

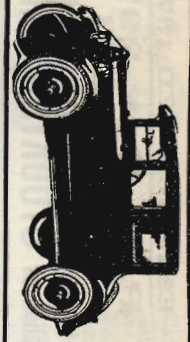
Stanislaus Cor. Channel St.  
STOCKTON, CAL.

## WALLACE AMBULANCE SERVICE

### RIPON—Continued

Heckman Ralph farmer  
Hedman Adolph farmer rt A  
Heim Henry driver  
Hermanson Nels farmer  
Hess Jacob V farmer rt A  
Hetebury Mrs Gerritt farmer  
Higgins Chas J lab  
Highland Roy draymn  
Hill Jesse W farmer  
Hill Jos H farmer  
Hill Stephen T farmer rt A  
Hine Henry driver  
Hitchcock Crawford C farmer  
Hitchcock Geo C farmer rt A  
Hitchcock Henry C farmer rt A  
Hitchcock Henry H farmer rt A  
Hobson J I farmer rt A  
Hoekenga Rev Peter J (Christian Reform)  
Hoekstra H farmer  
Hoff J W dairymn rt A  
Hoffmann Mrs Mary J  
Hoglund H G mgr Ripon Supp Co  
Hookstra Wm H farmer  
Hosli Fred farmer  
Hoss Willis E farmer rt 1  
Hotel Howard (R H Rasmussen)  
Hotel Markham (Mary E Markham)  
Houston Norman C blksmith rt A  
Howe John W farmer rt A  
Hugg M farmer  
Hughes Ivory S farmer  
**HUNTEMANN FRED C** Postmaster  
Huntemann Neta stngr Ripon Lbr Co  
Hurni Felix H tchr  
Huse Harry farmer rt A  
Hutchinson Arthur W farmer  
Hutchinson Clarence E farmer  
Hutchinson Frank H (Bodson & Hutchinson) Constable  
Inderbitzen H dairymn  
Ingram Henry W eng  
Ioppini Chas B salsn  
Ioppini Chas G farmer  
Iternicka Frank farmer  
Irey Wm E lab  
James Geo farmer  
James Geo E Jr farmer  
James Walter W farmer rt A  
Jameson J O rt A  
Jameson W O farmer rt A  
Joachim F M farmer rt A  
Johnson Arthur G (Reliable Garage)  
Johnson Carl C farmer rt A  
Johnson Carl E farmer  
Johnson Chas W lab  
Johnson Frank farmer

Johnson Herman lab rt A  
Johnson J Emanuel real est  
Johnson Louis E farmer rt A  
Johnson Victor driver  
Johnston J W farmer rt A  
Jones Edw farmer rt A  
Jones J Monroe farmer rt A  
Kahre Fred W farmer rt A  
Kahre Mrs Mary  
Kambato W farmer  
Kamps Henry farmer rt A  
Keel Danl W dairymn  
Keirn Walter E  
Kelly Chas E farmer rt A  
Keltner Walter E farmer  
Kern Harry baker  
Kerner Chas H tmstr rt A  
Keyes Chas H farmer rt A  
Kewin Lumber Co M A Daubin mgr  
Kilgore Ralph E farmer  
Kincaid Albert H stockmn  
Kincaid Fred H farmer rt A  
Kincaid Russell B (Ripon Meat Co)  
Kincaid Wm H farmer rt A  
King B E farmer  
King J T farmer  
Klinger Floyd A carp  
Klinger Henry farmer rt A  
Klinger Wm H farmer rt A  
Kooy Klaas farmer rt A  
Kooy Nick farmer rt A  
Kooy Nick Jr farmer  
Lagier Fred farmer rt A  
Lane Martin L farmer  
Larsen Lauritz P mgr  
Larson Peter (Tornell-Larson Grain & Produce Co)  
Laureiro John G dairymn rt A  
Lawrence Mathew R farmer  
Lawton Chas R farmer  
Leek Jos L farmer  
Leeman Walter W farmer rt A  
Leeman & Kilgore dairymn  
Leich Wm farmer  
Lemos M S  
Leonard's Garage (Arthur A and John C)  
Lepkey Jas farmer rt A  
Lerch Wm farmer rt A  
Lewis Benton A farmer rt A  
Lewis Benton R carp  
Liesy Geo H farmer rt A  
Liesy Levi E farmer rt A  
Liesy Lloyd farmer rt A  
Linder B D farmer  
Lindsay Wm H lab  
Lisenbee Chas R farmer  
Lising Mrs Grace farmer rt 1  
Little H farmer  
Little J E mgr River Junction Farms



TEL. 1432

**CUTTING & LUSIGNAN**

231 N. CALIFORNIA ST.

**SALES: SERVICE**

STOCKTON

**MAXWELL**

*Franklin*

# VANS MANUFACTURING CO.

Manufacturers of VANS DOUBLE SUCTION PUMPS AND ELBOW CHECK VALVES

TEL. 324 J

519 N. CHURCH ST.

LODI, CAL.

387

**REAL ESTATE  
INS.**

**SUBDIVISIONS**

**17 S. SAN JOAQUIN**

Est'd

**L. M. CUTTING & CO.**

1860

**FARM LANDS  
LOANS**

**A SPECIALTY**

**Tel. 176. STOCKTON**

**ESTABLISHED 1871  
P. O. Box 297  
Phone 2336**

**CLARK'S SANATORIUM**

For the treatment of Mental, Nervous, Alcoholic and Narcotic cases. Beautifully situated within its own extensive grounds. Completely equipped with the most modern Hydro and Electro Therapeutic Appliances **STOCKTON, CAL.**

**RIPON—Continued**

Lowriero John G dairymn rt A  
Lucas Roy F farmer rt A  
Luce Henry K farmer  
Luce I K farmer rt A  
Ludy Chas E farmer  
Lundberg Frans G farmer  
Lundberg Fred farmer  
Lundberg Gustav farmer  
McBrian Chas A (Ripon Record)  
lawyer  
McCAUSLAND AGNES Asst P M  
McCausland Audley farmer  
McCausland Irving  
McCausland Jas A farmer  
McCray Mrs Elizabeth  
McCray Herlen S farmer  
McCray Wesley L farmer  
McGee Oscar R farmer  
McKee & Reynolds (Mrs L B Van  
Loan S W Reynolds) gen mdse  
McNiel A farmer rt A  
Mabrey Harold M prin Gram Sch  
Machado Frank S farmer  
Maciel Manuel V farmer rt A  
MacNeil Ambrose lab  
Madsen Hans garage  
Magruder Albert R (Gotshall &  
Magruder) cashr Bk of Ripon  
Markham Geo M farmer  
Markham Mary E (Hotel Mark-  
ham)  
Markle Eur J farmer  
Markle Frank B farmer  
Martin Geo H farmer  
Martin H P farmer rt A  
Martin Ira T hydraulic eng  
Martinelli Clarence E farmer  
Maskus Carl F farmer rt A  
Mathews A G farmer rt A  
Matthieson Hans farmer rt A  
Mattos Enos farmer  
Mattos John farmer rt A  
Mattos Wm farmer  
Mayer Eli A farmer  
Meedom Viggo K whsmn  
Mello A F farmer rt A  
Mello Jos M farmer rt A  
Mello Manuel S lab  
Mendes F R farmer  
Meneley Geo C farmer  
Meneley Jerry B farmer rt A  
Meninga Harm farmer  
Messenger Jas E farmer  
Messerschmidt Henry L carp  
Messerschmidt Herbert C farmer  
Meyer Eugene C farmer rt A  
Meyer Henry farmer rt A  
Meyer John M farmer rt A  
Miller Chas A salsn  
Miller Frank J farmer rt A  
Miller Jas H farmer

Miller L L farmer rt A  
Miller Wm H farmer  
Mitchell Wm H farmer rt A  
Mondo M V farmer rt A  
Mondo Francis A farmer rt A  
Montgomery Jas R farmer  
Moore Allen F farmer rt A  
Moore G A farmer rt A  
Moore Jay E carp  
Moore Le Roy A bkpr rt A  
Moore Robt E farmer rt A  
Moore W H farmer rt A  
Morgan Frank rt A  
Morgan John D butcher  
Mothorn Geo I farmer  
Mothorn Ira farmer rt A  
Moulton Mrs Edith orch  
Moulton J S Est C A Proudfit mgr  
Murphy Mrs Anna farmer rt A  
Murphy Bros (Wm J and Thos)  
gen mdse  
Murphy J W farmer rt A  
Murphy Robt L farmer rt A  
Murphy Thos F lab rt A  
Myers Eugene C farmer rt A  
Myers Harvey millmn  
Myers Irving lab  
Myers John A farmer  
Myers John M farmer  
Naber Johannes farmer rt A  
Nascimento Joaquin A dairymn  
Nelson Andrew A farmer rt A  
Nelson Andy P carp  
Nelson C J farmer  
Nelson David D farmer rt A  
Nelson Edd C farmer  
Nelson Wm farmer rt A  
Ness Paul L drugs  
New England-Calif Farms Co F F  
Copp mgr  
Newstrom David B carp  
Nicewonger Geo C stockmn rt A  
Nicewonger Mrs Mary E farmer  
Nichols Rev Elmer J  
Nilson Andy P carp  
Nilsson Arthur O farmer  
Nordquist C Victor  
Noren John E orch  
Norris Mark A farmer  
Nourse A J mgr Ripon Water Co  
Nourse Ralph C farmer rt A  
Nutt Clarence A farmer rt A  
Nutt Elias J clk  
Nutt Geo L farmer  
Nutt Robt Z lab  
Nutt Roy B farmer rt A  
Nutt Vernon A farmer  
Nychamp John J farmer rt A  
Nykamp John W farmer  
Obert Winthrop M farmer  
O'Connell Michael J rt 2  
O'Donnell Martin farmer

**C. E. BRAMWELL, D. C.** Chiropractor (Palmer Graduate)

CHIROPRACTIC  
Restores Health

Suite 314-15 First Nat. Bank Bldg.

PHONE 898

STOCKTON

388

# CALIFORNIA CITY AND COUNTY DIRECTORIES

POLK-HUSTED DIRECTORY CO. P. O. BOX 687 SACRAMENTO

## RIPON—Continued

Ogan Bert L dairymn rt A  
 Olson D farmer rt A  
 Olson John P carp rt A  
 Olson Ole farmer  
 O'Malley Mrs Anne farmer rt A  
 O'Malley Margaret E farmer rt 1  
 Osborn Willard chauff  
 Osborne Geo W (Thomson & Os-  
 borne)  
 Osteri M rt A  
 Patry Geo W farmer  
 Paul Lenard A bldg contr  
 Paul Mrs Marian  
 Paulus Wm H farmer rt 1  
 Peard Stanley agt Cal Transit Co  
 Pellascio Robt dairymn  
 Peralta Frank S farmer rt A  
 Perkins Albert C fruit pkr  
 Perkins Wm H farmer  
 Peterson Arthur T farmer rt A  
 Petersen Chris clk  
 Peterson Harold E H lab  
 Peterson Rasmus farmer  
 Peterson R T farmer rt A  
 Peterson S W farmer rt A  
 Phillips Jos dairymn rt A  
 Phillips Martin farmer  
 Pierce D H farmer  
 Pierce J Austin lab rt A  
 Pingrey Bros (John and Henry)  
 farmers rt A  
 Pingrey Edw L farmer rt A  
 Poelstra David farmer  
 Pope Jas S farmer rt A  
 Pope Leo J farmer  
 Porter Henry I farmer  
 Post Office F C Huntemann P M  
 Postma Obe clk  
 Potter Fredk K farmer rt A  
 Potter John rt A  
 Potter J H rt A  
 Potter Seth W farmer rt A  
 Potter Virgil A farmer  
 Poulos Fred W firemn  
 Poulos Steve farmer rt A  
 Poyner Ples G farmer rt A  
 Poynor Elmer B farmer rt A  
 Pratt Henry farmer rt 1  
 Pratt Morgan farmer rt A  
 Pratt Newton farmer rt A  
 Preshaw Harry O elec  
 Preshaw Wm S  
 Proos David benchld  
 Proos Peter lab  
 Proudfit Benj G farmer rt A  
 Proudfit Chas A mgr J S Moulton  
 Est and Ripon Realty Co  
 Proudfit Mrs Ethel bkpr  
 Rasmussen Rasmus H (Hotel How-  
 ard)  
 Rasmussen Rastus A carp

Reardon Wm T rt A  
 Reardon Ambrose F farmer  
 Regello Joe J Jr dairymn  
 Regello Jose G farmer  
 Regello R farmer  
 Reinhardt Oscar farmer  
 Reliable Garage (G Tornell A G  
 Johnson)  
 Remond Oscar G farmer  
 Rendon Cecil P (Foltz Rendon &  
 Wallace) h Stockton  
 Reynolds Sydney W (McKee &  
 Reynolds)  
 Ribeiro John farmer rt A  
 Richey Isaac C farmer rt A  
 Richter John L mach  
 Richter Walter J mgr Ripon  
 Plumbing Shop  
 Riley Elmer S farmer  
 Ripon Board of Trade T C Smeth-  
 ers sec  
 Ripon Growers Assn A C Perkins  
 sec  
 Ripon Library Mrs M Acker libr  
**RIPON LUMBER CO B R Du Vall  
 Mgr**  
 Ripon Meat Co (R B Kincaid A E  
 Van Slyke)  
 Ripon Plumbing Shop W J Richter  
 mgr  
 Ripon Realty Co C A Proudfit mgr  
 Ripon Record (C A McBrian)  
 Ripon Supply Co H G Hogland mgr  
 fruit pkrs  
 Ripon Telephone Exchange (G F  
 Green)  
 Ripon Water Co A J Nourse mgr  
 Ritchey J H farmer  
 Ritter Antone H farmer  
 River Junction Farms J E Little  
 mgr  
 Roberson Theo B farmer rt A  
 Roberts Arthur farmer rt A  
 Roberts Mrs Mary farmer rt A  
 Robertson Jas M farmer rt A  
 Robles Nicholas restaurant  
 Rodoni Gabriel farmer rt A  
 Rogers Domingos E farmer  
 Rork John well borer  
 Rose Alfred R farmer  
 Rose Chas farmer  
 Ruess Chas farmer rt A  
 Rushing John T farmer  
 Rushing Wm J farmer  
 Rutherford Walter farmer  
 Santos Chas farmer rt A  
 Santos John M farmer  
 Sbrogia G farmer  
 Scassa Jas farmer  
 Schaapman John farmer rt A  
 Scheck Adolph W farmer rt A  
 Schnell Leonard farmer rt A

# HESS

## DYEING AND CLEANING WORKS

Established

# 49

Years

PHONE

# 1182

# 338

N. Calif.

Stockton

**CLASS A GARAGE** O'LEARY & MINAHEN, Props.  
**AUTOMOBILES** Day and Night Service  
 125 S. Sutter St. STOCKTON  
**ACCESSORIES** PHONE 384

389

# CITY BANK

"The Marble Bank Building"

MAIN at SUTTER St. Phone 5318

SAVINGS COMMERCIAL SAFE DEPOSIT BOXES

CLARENCE

L.

DICKINSON

WHOLESALE

HAY

GRAIN BEANS BAGS

PHONE 4943

44

E. Weber Av. STOCKTON, CALIF.

RIPON—Continued

Schrader Ernest A farmer  
 Schupper Jos farmer  
 Schurman Fred farmer  
 Schutt Aug farmer rt A  
 Scossa Chas farmer rt A  
 Scossa Jas farmer rt A  
 Scott C C farmer rt A  
 Seely M V farmer rt A  
 Seybels Edw lab rt A  
 Sharenbrock Herman G lab rt A  
 Showalter Clarence H driver  
 Silva Frank farmer rt 1  
 Silva Jos S farmer  
 Silva Manuel farmer rt A  
 Silva M J farmer  
 Silva Wm farmer  
 Silveira Thos S dairymn rt A  
 Sisson Clinton G farmer  
 Skinner J F farmer rt A  
 Slikker Klaas farmer  
 Smethers Thos C cashr First Nat Bk  
 Smith Asa farmer rt A  
 Smith Dean farmer rt A  
 Smith Milton W farmer rt A  
 Smith Silas L farmer rt 1  
 Snodgrass Louis H farmer rt A  
 Soares Severino J dairymn rt A  
 South Mrs Grace J  
 Southworth Ernest L farmer rt 1  
 Souza Manuel M farmer rt A  
 Souza Mathew I dairymn rt A  
 Spaman Henry J clk  
 Sprague Lewis A merchant rt 1  
 Sprague Mant P clk  
 Spuehler Walter farmer rt 1  
 St John E N farmer  
 St John Mark L bkpr  
 Stahl Chas M farmer  
 Stalberg Erick carp  
 Standard Oil Co C J Anderson agt  
 Stenstrom Wm farmer rt A  
 Stephenson Frank S farmer rt A  
 Stevens Peter farmer rt A  
 Stewart J & Sons gen mdse  
 Stinehart J A lab  
 Stockton Hardware & Implement Co B Van Nader mgr  
 Stoneberg Albert R farmer  
 Stuart Arthur L meat ctr  
 Stuart A V cannery  
 Stuart Lester V farmer rt A  
 Stuart Raymond S nurserymn rt A  
 Summers Danl farmer rt A  
 Sutherland G H farmer rt A  
 Swass Frank farmer rt A  
 Swass Henry farmer  
 Swenson Frank farmer rt A  
 Swett's Nursery Geo Bianchi supt  
 Tawney Chas B fuel  
 Taylor Frank farmer rt A

Tener John K farmer  
 Theiler Henrich E farmer rt A  
 Thiemann J A clk  
 Thoma Wm farmer rt A  
 Thomas J Ray blksmth  
 Thomason J T farmer rt A  
 Thompson Casey H harnessmkr  
 Thompson Roy G farmer  
 Thompson Wm plumber  
 Thomson & Osborne (Stuart Thomson G W Osborne) gen mdse  
 Thorp Frank M farmer rt A  
 Till Paul V farmer rt A  
 Tilton Mrs Helen baker  
 Tilton Jas B carp  
 Toiada Jos F farmer rt A  
 Tomlinson Jack farmer  
 Tornell Gothard (Reliable Garage)  
 Tornell-Larson Grain & Produce Co (Chas and Gothard Tornell Peter Larson)  
 Towne Danl M farmer rt A  
 Travaille Saml farmer rt A  
 Trink Chas E farmer rt A  
 Trondjhen Svend O farmer rt A  
 Tubbs Ira E farmer  
 Tulin John A farmer rt A  
 Turner Mrs Charity farmer rt A  
 Turner Ernest B farmer rt A  
 Turner F H farmer rt A  
 Turnquist Chas R farmer  
 Ubells Lambert bldg contr  
 Ufkes Sam farmer  
 Vallerie R farmer  
 Van Assen Gerritt farmer  
 Vance Virgil sec foremn SPCo  
 Van Dan Koert salsn  
 Van Den Akker Arie C farmer  
 Van Den Berg Klass farmer rt A  
 Van De Pol Peter farmer  
 Vanderkrahm John farmer  
 Vandiveer Riley T farmer  
 Van Dyken Harry R lab  
 Van Dyken Peter L carp  
 Van Goor Lubertus H farmer rt A  
 Van Limburgh E farmer rt A  
 Van Loon Geo A clk SPCo  
 Van Loon Irving L telg opr  
 Van Loon Mrs Laura B (McKee & Reynolds)  
 Van Nader B mgr Stockton Hdw & Implt Co  
 Van Slyke Alton E (Ripon Meat Co)  
 Van Slyke A T dairy rt A  
 Van Slyke Wayne T farmer  
 Van Tile Clarence bldg contr  
 Van Till Paul P carp rt A  
 Verrue Elmer R farmer  
 Verver Wm farmer  
 Vincelet Edmund J lab rt A  
 Vinet Jos P farmer rt A

# STOCKTON MORTUARY

FUNERAL DIRECTORS Phone 590 202-8 S. California St.

390

# DOHRMANN WOLF AGENCY

TELS. 113 791  
GENERAL INSURANCE 406 E. MARKET, STOCKTON

**BUY FARM IMPLEMENTS**  
**MOLINE PLAN**  
See **MOLINE PLOW CO.**  
1026 E. MAIN ST.  
PHONE 591 STOCKTON, CALIF.

**RIPON—Continued**

Visser G farmer rt A  
Voorheis Elba I farmer  
Voorheis M Luther farmer rt A  
Voorheis Noel O farmer  
Vrieling Gerrit farmer rt A  
Wagener Edw farmer rt A  
Wagener Geo farmer rt A  
Waggy Wm farmer  
Wagter John  
Walker J W farmer rt A  
Walker Wm A farmer  
Wallace Gerald B (Foltz Rendon & Wallace) h Stockton  
Wallstrom Lars R A carp  
Watkins Arthur farmer  
Watkins John P farmer  
Welch S W farmer  
Western Union Telg Co B J Cowden agt  
Westphal R R clk  
Wetmore Chas A vineydst  
Wille Fredk C farmer rt A  
Wille Henry A farmer rt A  
Wille Jos J farmer rt A  
Williams Chester R farmer rt A  
Williams Geo R stockmn  
Williams John R farmer rt A  
Willis Wm farmer rt A  
Willits Chas C farmer rt A  
Wilson Earl J farmer rt A  
Wilson Edgar D farmer rt A  
Winters Klass farmer  
Witherby Walter W farmer  
Witmer Simon C foremn Ripon Lbr Co  
Woolf Townsend S farmer rt A  
Wright Eugene C farmer  
Wright Jas C farmer  
Yaple Estill P (Yaple & Co)  
Yaple & Co C A Proudfit mgr real est  
Young Mrs Julia A farmer  
Zoerb Fred W farmer

**THORNTON**

Altnow John E farmer  
Atkinson Clyde D bkpr

Ayala David labor contr  
Babcock Arthur C farmer  
Babcock Cary E farmer  
Babcock Simeon C farmer  
Barber Edw H Justice of the Peace  
Barber Geo L farmer  
Barber Paul dairymn  
Bates Wakeley J farmer  
Bert Frank W farmer  
Bickham Carl B lab  
Blossom Robt M farmer  
Burchell J Wesley seed grower  
Burrow Mrs Kate orch  
Cinquini Peter farmer  
Clark C L farmer  
Comstock G L M farmer  
Cox Edw B farmer  
Crump A B orch  
Dawson Jacob K farmer  
Dillard Edw H farmer  
Dixon Bros farmers  
Donnelly Wm J lab  
Donnelly Jas farmer  
Doyle Patrick farmer  
Evans Thos W farmer  
Ferreira F butcher  
Foley John E lab  
Giardi A farmer  
**GIBSON JAS M Gen Mdse**  
Gilmere Frank trapper  
Gilmere John F lab  
Giorgi E farmer  
Gorsuch Jas L farmer  
Gorsuch Robt E farmer  
Gustafson Bernard V farmer  
Haehnlen Wm F farmer  
Hambleton J E clk  
Hauser Chas ranch foremn  
Hesse Edw carp  
Held Louis trapper  
Hoffman C O farmer  
Housken Wm C dairymn  
Jensen Geo farmer  
Johnson Fred lab  
Johnson Isaac farmer  
Johnson Jas N farmer  
Kerns F G sec foremn  
Kile Horton J farmer  
Kise Philip A farmer  
Koontz Geo M farmer  
Koontz Oscar agt WPCo  
Koontz W H farmer  
Lahman Ferdinand G dairymn  
Laufer Chas J farmer  
Lucas Stephen Constable  
Lund Andrew J farmer  
Macomber Andrew M rancher  
Marchi John soft drinks  
Mehrtten A C farmer  
Mencerini A farmer  
Mohr C E lab  
Nichols Robt Jr farmer



**DURANT**  
AND  
**PEERLESS**  
AGENCY

**STUART**  
**MOTORS**  
**COMPANY**  
INC.

121-123 N.  
San Joaquin

TEL.  
**2041**  
**STOCKTON**

# ROBERT POWELL CONTRACTOR AND BUILDER

PLANING MILL, 945 E. LINDSAY Cor. SACRAMENTO

2612 W RESIDENCE PHONE 1298

391