

POLK-HUSTED DIRECTORY CO'S CLASSIFIED BUSINESS DIRECTORY 1913

Names appearing under heading marked () are inserted only by special contract*

Abstracts of Title
San Joaquin County Abstract Co
11 S Hunter
STOCKTON GUARANTY TITLE
CO 36 S San Joaquin

Academies and Schools
See Colleges and Schools

Accountants
McLAREN GOODE & CO 519 Calif
San Francisco

* **Accountants—Certified Public**
GREENHOOD & JANSEN 405-11
Clunie Bldg 519 Calif San Fran-
cisco

* **Adjustment Companies**
CITY ADJUSTMENT CO 25-6 Hale
Bldg (See bottom end and Col-
lection Agencies)
HORNAGE GEO 28 S Calif (See
top lines and Collection Agencies)
ROSS MERCANTILE AGENCY
208-10 Elks Bldg (See side lines)

Advertising Agents
Dawson W E 209 Elks bldg
Ross A G 511 Sav & Loan bldg

* **Advertising Cuts**
STOCKTON PHOTO-ENGRAVING
CO 327 E Weber (See bottom
lines)

Agricultural Implements
Burrkett J J 234 E Market
Caine J C 29 S El Dorado
Calif Moline Plow Co Main and
Sacto
Harris Mfg Co East cor Park

HOLT MFG CO THE Aurora cor
Church
JORY C & SONS 901 E Lafayette
(See bottom lines)
Mathews Newell Co 218 S Aurora
SAMSON IRON WORKS 1100 S
Aurora (See front cover)
SHAW H C CO Weber cor Calif
(See front edge)
Stockton Implement Co 25 S Calif
Doering Gottlieb Lodi

* **Alfalfa Lands**
GOODE & HUGHES 27 N Hunter
(See side lines)
SOUTH & SMETHERS Ripon (See
side lines and Real Est)

Architects
Brown E B 12 Masonic Temple
KING WALTER 308-10 Elks Bldg
(See backbone)
Morrell R P 210 E Main
Phillips A L 4 Phys bldg
Stone & Wright 24 S Calif
Thomas W B 85 San Joaquin bldg
Wilson R B 79 San Joaquin bldg

* **Architectural Engineers**
YOUNG C H 38-40 Wolf Bldg

* **Architectural Terra Cotta**

| | |
|--------------------------|--|
| PHONE DOUGLAS 2260 | GLADDING, McBEAN & CO 310-317 CROCKER BLDG. SAN FRANCISCO, CAL. |
|--------------------------|--|

Art Embroidery
Atwood Mrs Mollie 428 E Poplar
Davison Mrs Ella 15 N American
Jewett The Misses 409 E Weber
McAlear Agnes 19 N Calif
Reid Mrs C S 105 E Acacia
Bushnell Mrs Edith Lodi

LUARD SHEET METAL WORKS

CORNICE
SKYLIGHTS
HEATING
VENTILATING
TIN ROOFING

AUTO
SHEET-METAL
WORK

222 E. CHANNEL
Phone 531

STANDARD
NEW HOME
DOMESTIC
Sewing
Machines
and Supplies



Parts and attachments
for all machines,
repairing and renting

Round belting all sizes

Goods mailed on
receipt of price

J. E. WOOD
1223 E. Weber Ave.
Phones: 2583 L
2583 J

FRUIT BOXES AND BASKETS

ALL SIZES QUALITY THE BEST PRICES RIGHT
WE MANUFACTURE ALL OUR BOXES
SUNSET DOOR AND SASH CO. STOCKTON

358

POLK-HUSTED DIRECTORY CO'S

1913

Art Goods

Arts & Crafts Store 618 E Main
Gage H J Co 515 E Main
Quan Yak & Co 137 E Weber

Artists

Gamas Octave 826 E South
Givens Florence 546 Hawthorne
Kinney May G 1320 N Commerce
Murphy Mignon 640 N Sutter
Scarles Albert 207 S Sutter

* Asphalt Paving

CLARK & HENRY CONSTRUCTION CO Clark & Henry Bldg
(See top lines and Contrs—Gen)

Asylums

See Hospitals and Homes

Attorneys-at-Law

See Lawyers

Auctioneers

Gall J M 29 N Hunter
Pickens W W 329 S San Joaquin

* Automobile Garages

(See also Garages)
CAMPBELL AUTO WORKS 238-40 N El Dorado (See top lines)
GALL & DONALDSON 22-32 E Miner (See bottom lines)
STOCKTON GARAGE 419 E Channel (See side lines)

Automobile Liveries

Diaz Guy 39 S Hunter
Hicklin S K Sutter cor Main
Howell G W 427 E Main
STOCKTON TAXICAB CO 308 Savings and Loan Bldg (See side lines)

* Automobile Monograms

FOSTER F N 27 W Channel (See bottom lines)

* Automobile Oils

CAMPBELL AUTO WORKS 238-40 N El Dorado (See top lines)

* Automobile Painters

FOSTER F N 27 W Channel (See bottom lines)
SUNSET CARRIAGE FACTORY AND PLANING MILL 227-9 N American (See back cover and p 4)

* Automobile Radiator and Lamp Repairers

DELACRUZ M 20 N Stanislaus
(See side lines and Copper-smiths)

LUARD SHEET METAL WORKS

222 E Channel (See side lines)
TORESANI PETER 234 S Calif

* Automobile Rebuilding

CAMPBELL AUTO WORKS 238-40 N El Dorado (See top lines)

Automobile Repairers

CAMPBELL AUTO WORKS 238-40 N El Dorado (See top lines)
GALL & DONALDSON 22-32 E Miner (See bottom lines)
Hook A E 317 E Channel
LEHMANN AUTO CO 337 E Lafayette (See bottom lines)

LINN W J 416 N El Dorado
Pengilly & Hill 228 N El Dorado
Smith F D 118 N San Joaquin
STOCKTON GARAGE 419 E Channel (See side lines)

SUNSET CARRIAGE FACTORY AND PLANING MILL 227-9 N American (See back cover and p 4)

SUPERIOR GARAGE 218 Channel
WESTERN AUTO & MACHINE WORKS 6-12 E Miner

Westing A L 1445 Channel
Wilson W J 14 E Miner
MANTECA GARAGE Manteca (See side lines)

RIPON GARAGE Ripon (See p 343)

* Automobile Spring Mfrs

SUNSET CARRIAGE FACTORY AND PLANING MILL 227-9 N American (See back cover and p 4)

* Automobile Storage

GALL & DONALDSON 22-32 E Miner (See bottom lines)
STOCKTON GARAGE 419 E Channel (See side lines)

* Automobile Sundries — Clocks
Goggles Gloves Shawls
Robes Etc

STOCKTON AUTO SUPPLY CO 247 E Channel (See bottom lines)

REAL ESTATE
STOREY
305 E. WEBER Av. Phone 171



INSURANCE
TRIOLO
STOCKTON

*** Automobile Supplies**

CAMPBELL AUTO WORKS 238-40 N El Dorado (See top lines)
DOAN & WALSH RUBBER CO 232 N El Dorado
GALL & DONALDSON 22-32 E Miner (See bottom lines)
STOCKTON AUTO SUPPLY CO 247 E Channel (See bottom lines)
STOCKTON GARAGE 419 E Channel (See side lines)
MANTECA GARAGE Manteca (See side lines)
RIPON GARAGE Ripon (See p 343)

*** Automobile Tire Vulcanizers**
STEPHAN VULCANIZING WORKS 125 E Miner (See bottom lines)

*** Automobile Tires**

GALL & DONALDSON 22-32 E Miner (See bottom lines)
STEPHAN VULCANIZING WORKS 125 E Main (See bottom lines)
STOCKTON AUTO SUPPLY CO 247 E Channel (See bottom lines)
STOCKTON GARAGE 419 E Channel (See side lines)

*** Automobile Trimmers**

SUNSET CARRIAGE FACTORY AND PLANING MILL 227-9 N American (See back cover and p 4)

*** Automobile Trucks**

REO PACIFIC CO 246-8 N El Dorado (See bottom lines)
SAMSON IRON WORKS 1100 S Aurora (See front cover)

*** Automobile Wheels**

SUNSET CARRIAGE FACTORY AND PLANING MILL 227-9 N American (See back cover and p 4)

Automobiles

American-Marion Motor Car Co 247 N El Dorado
APPERSON JACK RABBIT CARS 246-8 N El Dorado
 Cadillac Motor Cars 36 E Miner
 Central Auto Co 118 N San Joaquin
 Clifford J E 248 N San Joaquin

GALL & DONALDSON 22-32 E Miner (See bottom lines)
 Hansel & Ortman 418 E Market
 Kitt L J 125 E Channel
LEHMANN AUTO CO 337 E Lafayette (See bottom lines)
 Lusignan J T 218 E Market
OAKLAND AUTO SALES CO 18-20 E Miner
REO PACIFIC CO 246-8 N El Dorado (See bottom lines)
SHAW H C CO Weber cor Calif (See front edge)
SKINNER J C 225 N El Dorado
STOCKTON GARAGE 419 E Channel (See side lines)
STUDEBAKER CORPORATION OF AM 320 E Market
SUPERIOR GARAGE 218 Channel
WALLACE BROS 400-416 N El Dorado
 Hoag A B Lodi

*** Awnings**

(See also Tents and Awnings)
MANTHEY BROS 420 N Calif (See bottom lines)
PACIFIC CARPET CLEANING CO 330-32 S Calif

*** Bad Debt Collectors**

CITY ADJUSTMENT CO 25-6 Hale Bldg (See bottom end and Collection Agencies)
ROSS MERCANTILE AGENCY 208-10 Elks Bldg (See side lines)

Bakers

(See also Confectioners)
 Arriola Hfonso 226 E Market
 Cowen & Sons 146 Fair Oaks
 Farrais Harry 111 E Market
 Gail Alfred 1136 S Center
 German-American Bakery 41 S Calif
 Gravem-Ingllis Baking Co Aurora cor Lindsay 348 N Calif 112 S Center and 209 Channel
MUZIO PIETRO 317 E Market (See side lines)
 New Neamkeag 111 S Hunter and 821 E Main
 Marchand W J Lodi
 Rieble Chris Lodi

*** Bakers—Wholesale**

MUZIO PIETRO 317 E Market (See side lines)

WE CAN
Collect
YOUR
Outstanding
Accounts
TRY
US
 Phone 986
Ross
Mercantile
Agency
 208-9-10
ELKS BLDG.

What's
Your
Line?

If
Your Card
Were Here
Everybody
Would
Know!!

GALL & DONALDSON
 Fireproof Storage Garage **TIRES, REPAIRING AND SUPPLIES**
 22-32 E. Miner Tel. 3685

HOTEL DALE

MRS. E. E. COUNSELL, PROP.
 EVERYTHING NEW AND ALL MODERN CONVENIENCES
 PHONE 2298
 34 S. SAN JOAQUIN ST.

River Express Co.

TRANSFER
 STORAGE
 PIANO
 FURNITURE
 AND
 SAFE
 MOVING

337 E. Market
 Tel. 2331

CLARK & HENERY CONSTRUCTION CO. BRIDGE AND WHARF BUILDERS ASPHALT PAVING

PHONE M. 463

STOCKTON

CLARK & HENERY BLDG

360

POLK-HUSTED DIRECTORY CO'S

1913

Bands and Orchestras

Stockton Union Band 130 E Main

* Bank Bar and Office Fixtures
POWELL ROBT 945 E Lindsay
 (See bottom lines and p 6)

**SUNSET CARRIAGE FACTORY
 AND PLANING MILL** 227-9 N
 American (See back cover and
 p 4)

UNION PLANING MILL 232 S
 Sutter (See side lines)

Banks and Bankers

Commercial & Savings 320 E Main

FARMERS & MERCHANTS 244 E
 Main (See side lines and adv)

First National 16 N San Joaquin

San Joaquin Valley 9 N Hunter

Stockton Savings 34 N San Joa-
 quin

**STOCKTON SAVINGS & LOAN
 SOCIETY** 301 E Main (See top
 lines and Household's Guide)

Union Safe Deposit 30 N San Joa-
 quin

Escalon State Escalon

Union Safe Deposit Lockeford

Bank of Lodi Lodi

Central Savings Lodi

First National Lodi

First State Manteca

Bank of Ripon Ripon

Bank of Tracy Tracy

West Side Tracy

Barbers

Bachetti Frank 20 W Main

Boehne F J 41 N El Dorado

Brecht Wm 125 E Weber

Caldera Antonio 108 S Center

Capurro F R 16 E Main

Carlile W M 707 E Main

Castro A M 14 E Weber

Castruccio G J 41 N American

Cencirulo M A 26 E Main

Couturier N J 130 N Calif

Douglass Mrs Elizabeth 33 N
 Center

Douillard C E V 45 N Hunter

Elliott A J 47 Channel

Engleso Pasquale 232 S Center

Freitas A T 11 S Center

Gagliardi Antonio 206 E Market

Gilbeau A A 8 N Calif

Gilbeau E W 11 S Sutter

Golden J A 110 S El Dorado

Goodwine P G 941 E Weber

Hart J M 31 N Hunter

Hatfield B F 207 E Weber

Hughes W T 110 S Sutter

Hunter G L 442 E Main

Hyers J A 416 S Center

Johnson E F 930 E Main

Keane J H 906 E Main

Knapp G A 121 S Calif

La Veau L W 643 E Main

Lazzarini C A 246 S El Dorado

Lierman O J 230 E Taylor

McGinnis J E 9 N Sutter

McNaughton Howard 531 E Weber

Neves Tony 39 S San Joaquin

Phillips W C 227 E Weber

Pike W C 614 E Main

Raber W H 113 E Main

Raffanti Fiora 148 S El Dorado

Reynolds A B 112 N San Joaquin

Rhodes T J 22 N Center

Risley Fred 845 1/2 E Main

Rose F R 13 S San Joaquin

Schaffner E C 114 E Weber

Schon & Acheson 44 S San Joa-
 quin

Serrano M P 308 S Center

Silber O F 114 N Hunter

Soriani Caesar 14 S El Dorado

FARMERS AND MERCHANTS BANK

OF STOCKTON, CALIFORNIA

CAPITAL AND SURPLUS \$750,000

Interest Paid on Deposits

Safe Deposit Boxes for Rent

D. A. GUERNSEY, President

JAS. M. ABEEL, Cashier

JOHN M. PERRY, V.-Pres.

C. H. ROTHENBUSH, Asst. Cashr.

W. E. MORRIS, Asst. Cashr.

GENERAL BANKING BUSINESS TRANSACTED

F. N. FOSTER AUTO AND CARRIAGE PAINTER

MONOGRAMS AND LETTERING A SPECIALTY
 27 W. CHANNEL TEL. 3680

CENTRAL DRUG COMPANY

PURE DRUGS

Telephone and we deliver to any part of the city free
Tels. 2082 and 3423 45 N. Calif. St., Cor. Weber

1913 CLASSIFIED BUSINESS DIRECTORY 361

Soto J G 115 S Center
Stason D J 135 S San Joaquin
Taylor H E 34 S Calif
Tietjen Fred 530 E Main
Weinberg Isadore 28 N Center
Wetzel Fred 1508 E Main
Zignego & Jason 10 N Sutter
Dustin Elmer Lodi
Leech T R Lodi
Stark E H Lodi

* Barges

ISLAND TRANSPORTATION CO
Weber opp Center (See top lines)

Basket Manufacturers

Pacific Basket & Barrel Factory
Lodi

Baths

(See also Barbers)

Spencer W H 41 S San Joaquin
Stockton Hot Mineral s end San
Joaquin

Bazaars

See Notions

Bicycle Repairers

Lacey W B 214 N Sutter

Bicycles

Brown Adolph 210 E Market
Brown S C 243 S Calif
Craver J E 208 N Calif
Jones F M 32 S Calif
Graffigna Bros Lodi
Wright & Van Buskirk Lodi

Bill Posters

Stockton Bill Posting Co 130 S
Sutter
Stockton Bill Posting & Sign Co
420 Channel

Billiards and Pool

Bederman H J 34 S Aurora
Buchenau & Young 48 S San Joa-
quin

Churkos Jas 9 S El Dorado
Coleman J A 133 S Center
Darkatos & Christ 7 S El Dorado
Morris C K 643 E Main
Morris D M 37 S Sutter
Rosenthal Irving 333 E Weber
Stag Parlor 637 E Main
Sweeney J W 33 N Hunter

Blacksmiths

(See also Horseshoers also Car-
riage and Wagon Makers)
Bidwell & McKinnon 845 E Market
Bink Anthony 941 E Miner
Groom F A Sharp's lane nr South
JORY C & SONS 901 E Lafayette
(See bottom lines)

Le Duc U J East cor Linden
Libbey C A 941 E Lindsay
O'Brien John 121 N American
Penberthy W J 420 S Center
Rains R A 231 S Calif
Solari Victor Lower Sacto rd cor
Wyandotte
Stribley T R 26 Cross
SUNSET CARRIAGE FACTORY
AND PLANING MILL 227-9 N
American (See back cover and
p 4)

TREMAIN E E 636-40 E Market
(See side lines and Carriages)

Dart C O Lodi
Frandsen C T Lodi
Gilbeau F W Lodi
Hepper & Schomo Lodi
Ware E D Lodi

* Blacksmiths' Coal

SHAW H C CO Weber cor Calif
(See front edge)

* Blankets and Comforters

GUMMER F A INC 425-39 E
Weber (See opp p 104)
HORAN W J 410 E Main (See top
and bottom lines)

* Blue Printers

YOUNG C H 38-40 Wolf Bldg

Boarding Houses

See Furnished Rooms Etc

* Boat Repairers

STEPHENS BROS Yosemite and
Stkn Channel

Boat and Ship Builders

Grant John Channel nr Van Buren
Ingersoll G W 202 W Lindsay
STEPHENS BROS Yosemite and
Stkn Channel

Boiler Works

McKerley Wm 20 S Commerce

FARMERS & MERCHANTS

BANK

Save for the
Rainy Day

4%

ON SAVINGS
ACCOUNTS.

Capital and
Surp us \$750,000

244 E. MAIN

TEL. 224

UNION PLANING MILL

GENERAL MILL WORK
JOBING
HOUSE FINISH - OFFICE FIXTURES

SUTTER, Cor.
LAFAYETTE

STEPHAN VULCANIZING WORKS

AGTS. AJAX TIRES

5000-Mile Guarantee. Expert Tire Repairing
125 E. MINER TEL. 239

EFES

GOODE & HUGHES REAL ESTATE

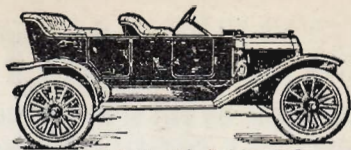
City and Country
Property
Fire, Life, and
Auto Ins.

Notaries Public
27 N. HUNTER
Tel. 225

the World with a
postage stamp, nor
can you cover the

You Can't Cover

BUYING PUBLIC without proper representation in your
City Directory



238-40 N. EL DORADO

Campbell Auto Works

Repairing and Rebuilding Parts to Order
General Machine Work E. P. Campbell, Prop.
TEL. 866

362

POLK-HUSTED DIRECTORY CO'S

1913

* Bonds

GIANELLI & RICE 45 N Sutter
(See front cover)
GRUNSKY DIETRICH & LEISTNER 26 S San Joaquin (See top lines)

Bookbinders

RECORD PUBLISHING CO 530-40
E Market (See side lines)
STOCKTON BOOKBINDERY 327
E Weber
Storm Alex 137 Bridge

Booksellers and Stationers See Stationers

Boots and Shoes—Retail See Shoes

Bottlers—Beer

BLUE AND GOLD BEER 245 N
Hunter
Rainer Bottling Works 933 E La-
fayette
Wille G F 747 E Main

Bottlers—Soda and Mineral Water
Huskins W B 725 E Lafayette
Molen H E 340 N Hunter
Ziemer C A 727 E Weber
Lodi Soda Works & Ice Depot Lodi

Bowling Alleys

Whaley & Rossman Lodi

Box Manufacturers

STOCKTON BOX CO 110 Channel
SUNSET DOOR & SASH CO Park
cor Sacramento (See top lines)

* Brass Castings

SAMSON IRON WORKS 1100 S
Aurora (See front cover)
Channel Brass Foundry 6 Cross
DELACRUZ M 20 N Stanislaus (See
side lines and Coppersmiths)

Brewers

El Dorado Brewing Co American
cor Oak

Brick Mfrs and Dealers

San Joaquin Brick Co 39 S El Do-
rado
Stockton Fire & Enamel Brick Co
Calif nr 8th

* Brick—Pressed and Fire

PHONE
DOUGLAS
540

GLADDING, McBEAN & CO
310-317 CROCKER BLDG.
SAN FRANCISCO, CAL.

* Bridge Builders

CLARK & HENERY CONSTRUCTION CO Clark & Henery Bldg
(See top lines and Contrs—Gen)

Brokers—Merchandise

Kerr W T & Son 120 N El Dorado
O'Connor W E 131 Bridge
Paddock-Covell Co 120 N El Do-
rado
Stockton Sales Co 632 E Market

* Brooders

WARD'S FIRELESS BROODER
Wilkes-Pearson-Knutzen Co Agts
701-5 E Weber

Broom Manufacturers

Hemingway Abraham 401 N East

* Brushes

BLANCHARD-GUERNSEY CO 20
N Sutter (See p 2)
FULLER W P & CO 330 E Market
(See side lines)

* Builders Hardware

SHAW H C CO Weber cor Calif
(See front edge)

* Building Contractors

(See also Carpenters)

CHAIN & SHEPHERD 1426 N Edi-
son and 237 W Acacia (See p 5)
FINNELL W C 421 E Jefferson
(See p 6)
HAWES G N 1139 S San Joaquin
(See p 7)
HEALEY A L 527 E Anderson
(See p 6)
NEWSTROM D B 1226 N Pilgrim
(See p 6)
POWELL ROBT 945 E Lindsay
(See bottom lines and p 6)

* Building Loans

**SAN JOAQUIN VALLEY BLDG &
LOAN ASSN** 15 S Hunter (See
top lines)

* Building Material

BRANCH A L CO 330 N Calif (See
side lines)

W. J. Moran

FURNITURE CARPETS

THE STORE THAT SAVES YOU MONEY
410-18 E. MAIN ST. TEL. 2182

GRUNSKY- REAL ESTATE INSURANCE TEL. 113 DOHRMANN CO.

1913 CLASSIFIED BUSINESS DIRECTORY 363

CLARK & HENERY CONSTRUCTION CO Clark & Henery Bldg (See top lines and Contrs—Gen)
POWELL ROBT 945 E Lindsay (See bottom lines and p 6)
SIMPSON-GRAY LUMBER CO 124 W Weber (See back cover)
UNION PLANING MILL 232 S Sutter (See side lines)

*** Building Paper**

FULLER W P & CO 330 E Market (See side lines)

Building and Loan Associations

SAN JOAQUIN VALLEY BLDG & LOAN ASSN 15 S Hunter (See top lines)
SECURITY BLDG LOAN ASSN 648 E Main
 Stockton Land Loan & Bldg Assn 323 E Weber

*** Bungalows**

CHAIN & SHEPHERD 1426 N Edison and 237 W Acacia (See p 5)
FINNELL W C 421 E Jefferson (See p 6)
HAWES G N 1139 S San Joaquin (See p 7)
HEALEY A L 527 E Anderson (See p 6)
NEWESTROM D B 1226 N Pilgrim (See p 6)

*** Business Colleges**

BEALD'S BUSINESS COLLEGE Sutter cor Weber and San Francisco (See backbone and opp p 112)
STOCKTON COMMERCIAL COLLEGE AND NORMAL SCHOOL Record Bldg (See back cover and p 3)

Butchers

See Meat Markets

*** Butter Eggs and Cheese**
(See also Creameries)

WILKES - PEARSON - KNUTZEN CO 701-5 E Weber (See top lines)

Cabinetmakers

Gullit J B 1312 S Sutter
 McNeill C W 1728 S Hunter
 Mitscher H & Son 448 N Aurora

Nason Frank 904 E Market
Schneider Martin & Sons 248 N Aurora

SUNSET CARRIAGE FACTORY AND PLANING MILL 227-9 N American (See back cover and p 4)

Gregg W M Lodi

Cafeterias

(See also Restaurants)
 Arlington Cafeteria 26 S Sutter

*** Camp Furniture**

MANTHEY BROS 420 N Calif (See bottom lines)

Canners—Fruits and Vegetables

California Fruit Canners Assn
 Sacto cor Hazelton

*** Carburators**

STOCKTON AUTO SUPPLY CO 247 E Channel (See bottom lines)

Carpenters Contractors and Builders

(See also Contractors)

Bingham H L 632 N Ophir
 Bishop D B 427 E Main
 Boerensen A A 24 W Main
 Brown N L 126 N Sierra Nev
 Buck Wellman 320 Cleveland
 Burns Dennis 921 S Calif
 Camm H O 344 W Vine
CHAIN & SHEPHERD 1426 N Edison and 237 W Acacia (See p 5)
 Clari Peter 1214 S Grant

CLARK & HENERY CONSTRUCTION CO Clark & Henery Bldg (See top lines and Contrs—Gen)

Connell Hugh 537 W Flora
 Connell J S 128 E Flora
 Daniels Wesley 623 W Park
 Diel Goswin 1321 N Monroe
 Doyle D J 423 W Poplar
 Eldridge C A 220 E Main
 Fessler E N 1531 S Calif

FINNELL W C 421 E Jefferson (See p 6)

French & Tyler 422 N Edison
FUHRMANN C M 729 N Lincoln (See p 8)

Godsil Richd 516 W Park
 Green H P 629 N Harrison
 Groves A S 1034 S Sutter

A. L. BRANCH CO.

COAL

WOOD, HAY, FEED, CEMENT, SAND, GRAVEL
 330 N. CALIF.
 Phone 2454

Stockton Sheet Metal Works

All Kinds of Tin, Copper,

AND

Galvanized Iron Work

37 N. American St.

PHONE 354

327 E. WEBER AVE

TELEPHONE 535

PHOTO ENGRAVING COMPANY

San Joaquin Valley Building & Loan Association

A. M. NOBLE, SEC.

LOANS MADE HOME BUILDERS ON INSTALLMENT PLAN
INTEREST ON SAVINGS DEPOSITS

15 S. HUNTER

STOCKTON

364

POLK-HUSTED DIRECTORY CO'S

1913

Carpenters Etc—Continued

HAWES G N 1139 S San Joaquin
(See p 7)

HEALEY A L 527 E Anderson
(See p 6)

Henderson C C 705 E Anderson

Jensen Andrew 2228 N Calif

Larimer W E 803 W Park

Larimer W H 803 W Park

Lewis T D 1320 S San Joaquin

Lewis & Barling 245 S American

Long C M 731 N Harrison

Love A S 1430 N Hunter

McCone J C 904 S San Joaquin

McEachern J A 234 N Sierra Nev

McPhee A J & Sons 316 N Calif

McTaggart Royal 422 S Sutter

Matteson E J 115 S Pilgrim

Megolensky Nathan 1145 S Center

Moore John 15 S Calif

Mulcahy Jas 526 S Grant

NEWSTROM D B 1226 N Pilgrim

(See p 6)

Nystedt C J 1048 N Sierra Nev

Petzinger C R 229 S Sutter

Potter E E 348 E Sonora

Potter E L 1145 N Pilgrim

POWELL ROBT 945 E Lindsay

(See bottom lines and p 6)

Rugg E F 1120 S Madison

Sala Frank 204 Cleveland

Sinnett Bros 830 N Van Buren

Sleeth & Nelson 1421 Channel

Smith M F 1721 N Hunter

Snell W H 905 N Calif

Towne C A 927 N Lincoln

Utt L E 33 W North

Vickroy H E 635 E Main

Waite Herbert 438 E Rose

Walter H H 1311 E Flora

Barnes W J Lodi

Corbin W O Lodi

Heald H E Lodi

Hieb J W Lodi

Lucas Jacob Lodi

McClung L E Lodi

Schroeder O A Lodi

Senner Reinhardt Lodi

Stanley H M Lodi

Voorhies R M Lodi

Voorhies W D Lodi

Carpet Cleaners

MANTHEY BROS 420 N Calif (See bottom lines)

PACIFIC CARPET CLEANING CO
330-32 S Calif

Carpet Layers

MANTHEY BROS 420 N Calif (See bottom lines)

Carpet Weavers

MANTHEY BROS 420 N Calif (See bottom lines)

* Carpets

GUMMER F A INC 425-39 E
Weber (See opp p 104)

HORAN W J 410 E Main (See top and bottom lines)

MANTHEY BROS 420 N Calif (See bottom lines)

* Carriage Painters

(See also Painters—Carriage)

FOSTER F N 27 W Channel (See bottom lines)

**SUNSET CARRIAGE FACTORY
AND PLANING MILL** 227-9 N
American (See back cover and p 4)

TREMAIN E E 636-40 E Market
(See side lines and adv)

RIPON

SOUTH SAN JOAQUIN

Lands

NONE BETTER

South & Smethers

LIFE, FIRE,
ACCIDENT, AUTO

Insurance

PHONE 17

RIPON

Carriage and Wagon Repairs

Wagons Built
to Order

Rubber Tire Setting
a Specialty

E. E. Tremain

634-40
E. MARKET
PHONE 1567

E. E. TREMAIN

Carriage, Wagon and Wood Work

OF ALL KINDS

RUBBER TIRE SETTING A SPECIALTY — GENERAL
BLACKSMITHING AND REPAIRS.

634-40 E. MARKET STOCKTON

YOSEMITE HOTEL

15 N. Sutter St. Phone 4 Stockton

J. T. Milchen, Prop.
ELEGANTLY FURNISHED
TRANSIENT:

50c, 75c, \$1.00, \$1.50
PER DAY

Special rates by week or month

CLAYES' NO-PERCENTAGE DRUG STORE.....

COR. MAIN
and HUNTER
Phone Main 921
Goods Delivered

1913 CLASSIFIED BUSINESS DIRECTORY 365

Carriage Trimmers

Harris J W 129 E Miner
**SUNSET CARRIAGE FACTORY
AND PLANING MILL** 227-9 N
American (See back cover and
p 4)

Carriage and Wagon Makers

Garibaldi Emanuel 915 N East
Henderson M P & Son 28 N Ameri-
can
Phelan S F 434 E Market
**SUNSET CARRIAGE FACTORY
AND PLANING MILL** 227-9 N
American (See back cover and
p 4)
TREMAIN E E 636-40 E Market
(See side lines and adv)
Truscott A & Son 501 N Hunter

Carriages and Wagons

(See also Agricultural Implements)
McCall David 417 E Weber
SHAW H C CO Weber cor Calif
(See front edge)
**SUNSET CARRIAGE FACTORY
AND PLANING MILL** 227-9 N
American (See back cover and
p 4)

Cash Registers

National Cash Register Co 107 E
Weber

* Castings

SAMSON IRON WORKS 1100 S
Aurora (See front cover)

* Cement

(See also Lime Plaster and Cement)
BRANCH A L CO 330 N Calif (See
side lines)

* Cement Contractors

(See also Contractors—Cement and
Concrete)

**CLARK & HENERY CONSTRU-
TION CO** Clark & Henery Bldg
(See top lines and Contrs—Gen)
GASKELL W C 1743 S Calif (See
p 7)

Cemeteries

Catholic North nr Calif
I O O F plot Rural Cemetery
Jewish Poplar cor Union
Rural Cemetery lane nr North
San Joaquin North and Cemetery
lane
State Hospital w of Rural Cemetery

* Centrifugal Pumps
SAMSON IRON WORKS 1100 S
Aurora (See front cover)

* Chimney Pipe
**STOCKTON SHEET METAL
WORKS** 37 N American (See
side lines)

* Chimney Pipe—Terra Cotta

GLADDING, McBEAN & CO
310-317 CROCKER BLDG.
SAN FRANCISCO, CAL.

PHONE
DOUGLAS
540

Chiropodists

KATZ H H 105 E Main

Christian Science Practitioners

Felt Mrs N J 17 S J Val Bank
bldg
Felt T D 17 S J Val Bank bldg

Churches

African M E 225 S Commerce
Central M E San Joaquin cor
Miner
Church of the Nazarene Miner cor
Stanislaus
Church of the United Brethren in
Christ 135 S Stanislaus
Clay St M E San Joaquin cor Clay
East Side Presbyterian Main cor
Pilgrim
Epworth M E Fair Oaks cor Mar-
ket
Evangelical German Lutheran Zion
624 Channel
First Adventist Miner cor Stan-
islaus
First Baptist Hunter cor Lindsay
First Christian Calif cor Lindsay
First Church of Christ (Scientist)
Center cor Flora
First Congregational Hunter cor
Park
First German M E Lindsay cor
American
First Presbyterian 14 S San Joa-
quin
First Unitarian Record bldg
Gospel Tabernacle 1444 S Calif
Grace M E Channel cor Stanislaus
Japanese Buddhist 132 W Washn
Pentecostal Mission 24 S Grant
Reorganized Church of Jesus
Christ of Latter Day Saints 1229
S Sutter
St John's Episcopal El Dorado cor
Miner
St Mary's Washn cor Hunter

MEYER, McGOWEN & CO.
REAL ESTATE INSURANCE
32 N. SUTTER ST.
PHONE 889

SAN JOAQUIN CO'S BEST PAPER

READ THE

Stockton Record.

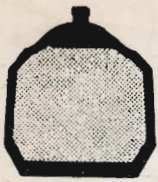


REO AUTOMOBILES

REO PACIFIC CO. OF S. F.

STOCKTON BRANCH, E. S. LOGAN, MGR.
246 N. EL DORADO ST.





M.
Delacruz
Coopersmith
AUTO
Radiator
AND
COOKING
UTENSIL
REPAIRING
20 N. Stanislaus
Tel. Stockton 1010

Artificial
Stone
Mnfrs.

CEMENT
BUILDING
BLOCKS
COPINGS
STEPS
SEWER PIPE
TILE

Stockton
Artificial
Stone Co.
Cor. Grant and Main
Streets

GRUNSKY

Rentals
Farm Lands

DIETRICH &

Real Estate
Gen. Ins.

LEISTNER

26 S. SAN JOAQUIN

366

POLK-HUSTED DIRECTORY CO'S

1913

Churches—Continued

Salvation Army Lafayette cor S
Joaquin
Second Baptist 1231 E Market
Temple Israel 424 N Hunter

Cider Manufacturers

Felchlin Alois 230 E Magnolia

Cigar Manufacturers

Kenning G E 47 N Hunter
Lambert Chas 201 E Weber
Reichman Saml 236 W Market
Ryckman Mrs Margaret 229 1/2 E
Weber
Scott G R 112 S Hunter

Cigars and Tobacco—Retail

(See also Confectionery and Fruit
also Grocers)

Chilion Geo 320 1/2 E Weber
Coburn F N 642 E Main
Dubois Nestor 845 E Main
Eaton R J 10 E Weber
Edwards W M 34 S Calif
Elliott Bros 637 E Main
Garcia Oscar 117 S Center
Garrow & Daugherty 347 E Main
Gross W W 234 E Main
Gumpert Wm 48 E Main
Gunzendorfer Ferdinand 432 E
Main

Hutchins J L 211 N El Dorado
Kane & Armacost 36 E Main
Lanata Gustave 130 S El Dorado
McBride D C 38 S El Dorado
Madsen P J 125 E Main
Meeker J M 16 S El Dorado
Meeker T N 106 S El Dorado
Pardini Paul 124 S El Dorado
Parker E C 8 E Main
Riba Vincent 47 N El Dorado
Samuel Arthur 348 and 339 E Main
and 102 E Weber
Sliger & Nye 229 E Weber

Stewart & Evans 511 E Market
Syuphy & Gianelli 26 S El Dorado
Tomer & Liggett 31 S San Joaquin
United Cigar Stores Co 335 E Main
White & Jacobs 226 E Main
Wilson O C 31 N Sutter
Wilkinson I I Lodi
Wilkinson & Wilkinson Lodi

Cigars and Tobacco—Wholesale
WILKES - PEARSON - KNUTZEN
CO 701-5 E Weber (See top
lines)

Civil Engineers and Surveyors
Broadhurst G W 15 Stkn annex
Budd H B 15 Stkn annex
COMPTON H T 242 E Main
HENDERSON & BULWILLER
242 E Main

Tumely & Raab 322 Elks bldg
McAfee & Barzelotti Lodi

*** Clay—Fire and Modeling**

PHONE
DOUGLAS
540 **GLADDING, McBEAN & CO**
310-317 CROCKER BLDG.
SAN FRANCISCO, CAL.

Cleaners and Dyers

Cummings & Wheeler 435 E Mar-
ket
Emporium Cleaning Co 107 S Cen-
ter
Gorman Harry 15 S Center
GREENBERG JULIUS 29 N Calif
(See adv)
Herman Geo 210 N Calif
Matteoli Frank 144 S Center
Michael Theo 119 N American
Parisian Cleaners 111 E Weber
Pennant Cleaning & Pressing Co
1654 S El Dorado and 425 E
Main
Pollard & Arthur 111 S Calif
Pomponio F J rear 127 E Hazelton

29 N. CALIFORNIA

STOCKTON, CAL.

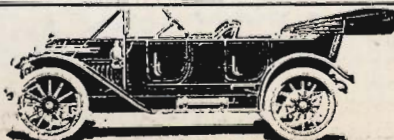
Next Door to Coffee Club
Suits Made to Order from \$18 Up

J. GREENBERG
TAILOR

High Grade Cleaning, Dyeing, Pressing and
All Kinds of Repairing.

Goods Called for and Delivered.

Phone 255—Res. 1904.



LEHMANN AUTO CO.

H. C. LEHMANN, PROP.
EXPERT AUTO REPAIRING
Agency **WARREN MOTOR CARS**

337 E. LAFAYETTE



San Joaquin Valley Macaroni Factory

MACARONI--VERMICELLI--SPAGHETTI

FANCY PASTE

Look For the Bear 13-15 W. MARKET F. VOLTOLINI PHONE MAIN 352

1913 CLASSIFIED BUSINESS DIRECTORY 367

Royal Cleaning & Dyeing Co 242 W Fremont
STOCKTON CITY LAUNDRY 22 N Grant (See front cover)
STOCKTON DYEING & CLEANING WORKS Office 515 E Main Works 520 E Lindsay
 Stockwell F S 1019 N Hunter
 Taisen J C 422 N Aurora
 Veden & Sherman 133 S San Joaquin
 Waldren & Peterson 1148 S Center
 Meyers E E Lodi
 Walling & Sharp Lodi

Cloaks and Suits

Laska H L 608 E Main
 Stockton Outfitting Co 40 S San Joaquin
 Lyons J A Lodi

Clothing

(See also Men's Furnishings)

Aaron Saml 116 E Main
 Arndt M S 313 E Main
 Barnett Solomon 113 S Center
 Belling Isaac 15 S El Dorado
 Blackfield Meyer 129 S San Joaquin
 Cleinman & Kaufman 10 N El Dorado
 Cleinmann Jacob 9 N El Dorado
 Curtis M O 343 E Main and 401 E Weber
 Davidson Saml 44 E Weber
 Dentoni M G & Bro 517 E Main
 Dresser The 415 E Main
 Emden Wm Co 5 E Main
 Friedman J F 20 E Weber
 Genser Geo 105 E Market
 Ghiglieri John 102 E Main
 Greenberg Abraham 921 E Main
 Greenberg Henry 921 E Main
 Horwitz Mrs Clara 30 N Center
 I X L Clo Co 147 E Weber

Isaacs Henry 528 E Main
 Kappenberg & Briones 41 N Sutter
 Katz Adolph 137 S Calif
 Kaufman Isadore 39 N El Dorado
 Lewis H W 120 E Main
 Miller Benj 32 N El Dorado
 Miller David 30 E Weber
 Osband Max 16 N Center
 Rosenbaum D S & Son 400 E Main
 Rottenberg Jos 37 E Main
 Santini Alfred 139 S El Dorado
 Sherman Morris 21 N Center
 Solkovich Harry 12 1/2 E Weber
STOCKTON OUTFITTING CO 40 S San Joaquin
 Tager Bros 16 N El Dorado
 Tenber Benj 37 N Center
 Thorp & Conway 433 E Main
 Threfall Bros 439 E Main
 Tully & Kramm Co 325 E Main
 Weinstein Morris 126 E Weber
 Weinstein Mrs Rachel 26 E Weber
 Williams R T 38 E Main
 Zager Morris 36 E Weber
 Enterprise Store Lodi

* Coal and Wood (See also Fuel)

BRANCH A L CO 330 N Calif (See side lines)
RIGGINS H B 402 S Calif

* Coffee—Roasted Daily
WILKES - PEARSON - KNUTZEN CO 701-5 E Weber (See top lines)

* Cold Storage
NATIONAL ICE & COLD STORAGE CO 895 S Center

Collection Agencies
CITY ADJUSTMENT CO 25-6 Hale Bldg (See bottom end and adv)

CITY ADJUSTMENT CO.

25-26 Hale Bldg. Est. 1910 Phone 1369

COLLECTIONS

LOCAL AND FOREIGN PERSONAL ATTENTION
 We collect peaceably, if possible, forcibly, if necessary, but we collect.

STOCKTON OIL BURNER CO.

HEATING PLANTS FOR HOMES AND PUBLIC BUILDINGS HOTEL AND RESTAURANT RANGES
 Plants Kept in Repair Without Charge. SIX YEARS SUCCESS IN STOCKTON
 12 W. MAIN TELS. 1627 AND 2016

SEE

W. P. FULLER & CO.
 Lubricating Oils and Compounds, Linseed Oils, Paints, Putty, Brushes, Glass, Etc., Etc.
 We carry the Celebrated MURESCO, a permanently hard wall finish; sixteen delicate tints

FRANK NASON
 CARPENTER AND CABINETMAKER
 FURNITURE made to order and Repaired.
 Screen Work.
 Saw Filing.
 Grinding.
 TEL. 2770
 904 E. MARKET

Phone 541

Wet Wash

IMPROVED

YADZCAL

Smith & Kalmer, Props.
El Dorado Cor. Worth

Phone 541

HOTEL ARLINGTON

OUR DOLLAR ROOMS CAN'T BE BEAT
STEAM HEAT - PRIVATE FREE PHONE - HOT WATER - A1 SERVICE
SPECIAL RATES BY WEEK OR MONTH 30-32 S. SUTTER

368

POLK-HUSTED DIRECTORY CO'S

1913

Collection Agencies—Continued
HORNAGE GEO 28 S Calif (See
top lines and adv)—
ROSS MERCANTILE AGENCY
208-10 Elks Bldg (See side lines)

Coleges and Schools
German English Lutheran 624
Channel

HEALD'S BUSINESS COLLEGE
Sutter cor Weber and San Fran-
cisco (See backbone and opp p
112)

International Correspond-
ence Schools 25 San Joaquin
Bldg

St Agnes Academy San Joaquin
cor Taylor

St Mary's College Washn nr San
Joaquin

Snell School of Social Culture 905
N Calif

STOCKTON COMMERCIAL COL-
LEGE AND NORMAL SCHOOL
Record Bldg (See back cover and
p 3)

Western Normal 632 E Main
Lodi Normal Institute Lodi

* Combined Harvesters

HOLT MFG CO THE Aurora cor
Church

* Comforters and Blankets

GUMMER F A INC 425-39 E
Weber (See opp p 104)

HORAN W J 410 E Main (See top
and bottom lines)

* Commercial Colleges

HEALD'S BUSINESS COLLEGE
Sutter cor Weber and San Fran-
cisco (See backbone and opp
p 112)

Queen Insurance Company Paid 100 Cents San Francisco Fire.
Let Me Issue You a Policy.

GEO. HORNAGE, NOTARY PUBLIC

Real Estate, Insurance and General Business Agent.
Collections Made in All Parts of the United States on
Reasonable Terms.

Money to Loan. Bank Stock Bought and Sold. Houses Rented.

RING UP 2141

28 S. California St.

Stockton

PETERS-WOLF CO.
GENERAL INSURANCE 37-39 E. CHANNEL TEL. 32
STOCKTON

You Can't Cover
BUYING PUBLIC without proper representation in your
City Directory

the World with a
postage stamp, nor
can you cover the

You Can't Cover

BUYING PUBLIC without proper representation in your
City Directory

STOCKTON COMMERCIAL COL-
LEGE AND NORMAL SCHOOL
Record Bldg (See back cover and
p 3)

Commission Merchants

Armsby J K Co 36 W Weber
Dunbar-Hansen Co 30 W Weber
Erlanger Jonas 14 W Weber
Gall C G & Co 23 N Center
Hammond T J 6 W Weber
Hicks J L 17 W Weber
Hobbs-Parsons Co 130 N El Dorado
Lambourn F F 43 N Center
Lanzelere W R Co 106 W Weber
McIntosh D J 41 N Commerce
Oullahan A C 24 W Weber
Platt Produce Co 32 W Weber
Russell D C Weber opp Commerce
Scatena L & Co 28 W Weber
Stein M P & Co 6 W Weber
Vignolo & Picardo 29 Channel
Webster G A 18 W Weber
Weyl-Zuckerman & Co 26 W
Weber
Willis Wm Co 140 N El Dorado
Wolf & Sons 45 N Center

* Compressed Air Cleaners

MANTHEY BROS 420 N Calif (See
bottom lines)

* Concrete Construction

ADAMSON & PAYTON 337 N
American (See p 5)

CLARK & HENERY CONSTRU-
TION CO Clark & Henery Bldg
(See top lines and Contrs—Gen)

Confectionery—Wholesale

Craig Candy Co 221 S Sierra Nev
Eastman-Gibbens Co 117 N Calif

ISLAND TRANSPORTATION CO.
STEAMER H. E. WRIGHT
LAUNCHES - - BARGES - - TOWING
OFFICE PHONE 376 NIGHT PHONE 931
OFFICE AND WHARF, CENTER, COR. WEBER STOCKTON

1913 CLASSIFIED BUSINESS DIRECTORY 359

Confectionery and Fruit

(See also Cigars and Tobacco also Grocers)

Benvenuti C H 37 N Sutter
 Bushman F R 131 S Calif
 Cohn Bros 505 E Main
 Godfrey J W 109 E Main
 Gomes John 943 E Weber
 Gross J T 915 E Main
 Hall Oswald 1404 E Main
 Hansley E M 342 N Calif
 Harding J J 2161 S San Joaquin
 Kuhn W F 434 E Main
 Lynn T J 125 S Center
 McCallum J A 346 E Main
 Moore Mrs A M 131 S San Joaquin
MUZIO PIETRO 317 E Market
 (See side lines)
 Patterson Mrs Charlotte 2161 S San Joaquin
 Pinckney Micajah 24 N Sutter
 Rendon Anita C 216 E Main
 Ryan & Smith 516 E Main
 Salazar Bros 329 S San Joaquin
 Santos F M 338 E Weber
 Sparks J H 109 S San Joaquin
WILKES - PEARSON - KNUTZEN
 CO 701-5 E Weber (See top lines)
 Ross F C Lodi

*** Construction Companies**

CLARK & HENERY CONSTRUCTION CO Clark & Henerly Bldg
 (See top lines and Contrs—Gen)

Contractors—Brick and Stone

CHAIN & SHEPHERD 1426 N Edison and 237 W Acacia (See p 5)
 Cowell A W 1231 N Sutter
FUHRMANN C M 729 N Lincoln (See p 8)
GASKELL W C 1743 S Calif (See p 7)
 Summerville Geo 936 N Commerce

Contractors—Bridge

CLARK & HENERY CONSTRUCTION CO Clark & Henerly Bldg
 (See top lines and Contrs—Gen)
 Haas D G 1220 N Harrison
MUNSON A B & SON 840 N Van Buren (See p 7)

*** Contractors—Building**

(See also Carpenters Etc)

CHAIN & SHEPHERD 1426 N Edison and 237 W Acacia (See p 5)
CLARK & HENERY CONSTRUCTION CO Clark & Henerly Bldg
 (See top lines and Contrs—Gen)

FINNELL W C 421 E Jefferson (See p 6)
FUHRMANN C M 729 N Lincoln (See p 8)
HAWES G N 1139 S San Joaquin (See p 7)
HEALEY A L 527 E Anderson (See p 6)
NEWSTROM D B 1226 N Pilgrim (See p 6)
POWELL ROBT 945 E Lindsay (See bottom lines and p 6)

Contractors—Cement and Concrete

ADAMSON & PAYTON 837 N American (See p 5)
CHAIN & SHEPHERD 1426 N Edison and 237 W Acacia (See p 5)
CLARK & HENERY CONSTRUCTION CO Clark & Henerly Bldg
 (See top lines and Contrs—Gen)
 Collins & McAllen 1019 S Calif
 Douville L N 420 S American
FUHRMANN C M 729 N Lincoln (See p 8)
GASKELL W C 1743 S Calif (See p 7)

McAfee J A 429 S Pilgrim
 Miller Rudolph 19 Cross

MUNSON A B & SON 840 N Van Buren (See p 7)
 O'Brien W J 1233 N San Joaquin
 Sanchez M M 46 E Taylor
 Stockton Artificial Stone Co Main cor Grant
 Frederickson Bros Lodi
 Graham & Marshall Lodi
 Perrin Bros Lodi
 Spiekerman E M Lodi

*** Contractors—Concrete Construction**

ADAMSON & PAYTON 837 N American (See p 5)
CLARK & HENERY CONSTRUCTION CO Clark & Henerly Bldg
 (See top lines and Contrs—Gen)
GASKELL W C 1743 S Calif (See p 7)
MUNSON A B & SON 840 N Van Buren (See p 7)

Contractors—General

ADAMSON & PAYTON 837 N American (See p 5)
CHAIN & SHEPHERD 1426 N Edison and 237 W Acacia (See p 5)

J. H. UTT
LAND

\$12

DOWN AND \$12 PER MONTH

BUYS 5 ACRES IN ANY OF MY TRACTS

See Me About It

22 S. Calif. TEL. 860

Ask Your Grocer

FOR

Miller's BEST FLOUR

More Loaves Better Bread

STOCKTON AUTO SUPPLY CO.
LEE TIRES ENSIGN'S OILS
PHONE 17 CHANNEL COR. SAN JOAQUIN STS.



Manufacturers
of the

Kryptok

Invisible
Bifocal



407

E. MAIN ST.
STOCKTON



**HOTEL
BRONX**

EUROPEAN
MODERN
BUS MEETS
ALL TRAINS
640 E. MAIN
Phone 3650

PHONE 67 39 N. SUTTER

DOOLITTLE & CO.
STOCKTON

**LOANS
REAL ESTATE
INSURANCE**

370

POLK-HUSTED DIRECTORY CO'S

1913

Contractors—General—Continued
CLARK & HENERY CONSTRUCTION CO Clark & Henery Bldg
(See top lines and adv)

FINNELL W C 421 E Jefferson
(See p 6)

FUHRMANN C M 729 N Lincoln
(See p 8)

GASKELL W C 1743 S Calif (See
p 7)

HAWES G N 1139 S San Joaquin
(See p 7)

HEALEY A L 527 E Anderson
(See p 6)

Moreing Cy & Sons 6 S J Val Bank
bldg

MUNSON A B & SON 840 N Van
Buren (See p 7)

NEWSTROM D B 1226 N Pilgrim
(See p 6)

O'Neal H T 728 N Sierra Nev

POWELL ROBT 945 E Lindsay
(See bottom lines and p 6)

Sullivan Michael 1003 N Calif

Contractors—Grading

Hart & Son 215 W Magnolia

McIntire F C 215 E Weber

Williams J E 602 N Sutter

*** Contractors—Irrigation Systems**

SAMSON IRON WORKS 1100 S
Aurora (See front cover)

*** Contractors—Marble and Tile**

MORRIS J W Calif cor North

*** Contractors—Municipal Pumping
Plants**

SAMSON IRON WORKS 1100 S
Aurora (See front cover)

*** Contractors—Painting**

(See also Painters and Paper-
hangers)

BLANCHARD-GUERNSEY CO 20
N Sutter (See p 2)

CHAIN & SHEPHERD 1426 N
Edison and 237 W Acacia (See
p 5)

Contractors—Paving

CLARK & HENERY CONSTRUCTION CO Clark & Henery Bldg
(See top lines and Contrs—Gen)

Covault G T 342 S Calif

MUNSON A B & SON 840 N Van
Buren (See p 7)

Contractors—Plastering

CHAIN & SHEPHERD 1426 N
Edison and 237 W Acacia (See
p 5)

Purcell G W 743 E Oak
Wheaton G B 745 E Hazelton
Wilson J E 437 W Flora

Contractors—Sewer

CLARK & HENERY CONSTRUCTION CO Clark & Henery Bldg
(See top lines and Contrs—Gen)

Contractors—Sidewalk

ADAMSON & PAYTON 837 N
American (See p 5)

FUHRMANN C M 729 N Lincoln
(See p 8)

GASKELL W C 1743 S Calif (See
p 7)

*** Contractors—Sheet Metal Work**

LUARD SHEET METAL WORKS
222 Channel (See side lines)

Contractors—Street

CLARK & HENERY CONSTRUCTION CO Clark & Henery Bldg
(See top lines and Contrs—Gen)

CLARK & HENERY CONSTRUCTION CO.

BRIDGES, WHARVES,

ALPHALT PAVEMENTS

GENERAL CONTRACTING

N. E. Corner Market and Sutter Sts. Tel. Main 463. Stockton

TEL. 411

**MANTHEY
BROS.**

420 N. CALIFORNIA

CARPET CLEANING

REFITTING AND LAYING

UPHOLSTERING AND
MATTRESS MAKING



**MOVE ANYTHING
FIREPROOF WAREHOUSE**
38 S. CALIF. TEL. 70

1913 CLASSIFIED BUSINESS DIRECTORY 371

MUNSON A B & SON 840 N Van Buren (See p 7)

Contractors—Teaming

Baldwin G C 1344 E Anderson
Comfort W K 1145 E Jefferson
Ewart John 813 E South
Fithian Ephraim 226 N American
Hamilton Jesse 116 E Church
Hopkins J H 1307 S Aurora
Jones Broderick 928 Stockton
Mallard Geo 529 S East
PACIFIC TRANSFER CO 36 S Calif (See top lines)
Vignolo A L 1301 N Edison

*** Conveyancers**

NOBLE & REID 15 S Hunter

Coppersmiths

DELACRUZ M 20 N Stanislaus (See side lines and adv)

*** Copper Tin and Sheet Metal Works**

LUARD SHEET METAL WORKS 222 Channel (See side lines)
STOCKTON SHEET METAL WORKS 37 N American (See side lines)

*** Cornice Manufacturers**

LUARD SHEET METAL WORKS 222 Channel (See side lines)
STOCKTON SHEET METAL WORKS 37 N American (See side lines)

Cracker Manufacturers

National Biscuit Co 122 E Market

*** Cream Separators**

SHAW H C CO Weber cor Calif (See front edge)

Creameries

(See also Dairies)
San Joaquin 9 E Miner
Stockton Creamery & Cheese Co
815 E Weber and 431 N Calif
Valley 19 E Main

*** Creamery Supplies**

SHAW H C CO Weber cor Calif (See front edge)

Crockery and Glassware

WILKES - PEARSON - KNUTZEN CO 701-5 E Weber (See top lines)
Yost-Dohrmann Co 417 E Main

*** Crushed Rock**

BRANCH A L CO 330 N Calif (See side lines)

*** Curtains**

GUMMER F A INC 425-39 E Weber (See opp p 104)
HORAN W J 410 E Main (See top and bottom lines)

*** Curtains—Bamboo**

MANTHEY BROS 420 N Calif (See bottom lines)

*** Cutlery**

SHAW H C CO Weber cor Calif (See front edge)

*** Cuts—Advertising**

STOCKTON PHOTO-ENGRAVING CO 327 E Weber (See bottom lines)

Dairies

(See also Creameries)
Jersey Dairy 439 E North
Kell's 930 N Sierra Nev
Miller's 41 S Pilgrim

M. DELACRUZ

Phone Stockton 1010

BRASS AND COPPER WORKS

20 N. STANISLAUS ST., STOCKTON

MANUFACTURING and REPAIRING

Automobile Radiator Work Brewery and Distillery Work
Hotel and Restaurant Cooking Utensils Retinning of All Copper Work

Stockton Tool Works C. JORY & SONS, Props.
TELEPHONE 2868

MANUFACTURERS OF FRESNO SCRAPERS MACHINE BLACKSMITHING
Agricultural Machinery Made and Repaired Punching, Shearing and Trip Hammer Work
AURORA STREET, N. E. CORNER LAFAYETTE

Tel. 954
PIETRO MUZIO BAKERY
Italian and French Bread and Galetta
317 E. MARKET



HOTEL BRONX

EUROPEAN MODERN
BUS MEETS ALL TRAINS
640 E. MAIN
Phone 3650

3 PHONES
7
112
2

TAKE A

**T
A
X
I**

STOCKTON
TAXICAB CO
WHITE
PANEL
SERVICE

IMPERIAL HOTEL

EUROPEAN PLAN

RATES:

50¢ to \$2.00

J. ED. MITCHELL, Prop. STOCKTON PER DAY

372

POLK-HUSTED DIRECTORY CO'S

1913

Dairies—Continued

Pioneer Milk Co 229 E Church
Royal 202 E Market

*** Dairy Lands**

GOODE & HUGHES 27 N Hunter
(See side lines)
SOUTH & SMETHERS Ripon (See
side lines and Real Est)

*** Deadening Felt**

FULLER W P & CO 330 E Market
(See side lines)

*** Decorators**

BLANCHARD-GUERNSEY CO 20
N Sutter (See p 2)

Delicatessen

Stone C N 235 S Calif
WILKES - PEARSON - KNUTZEN
CO 701-5 E Weber (See top
lines)

*** Denatured Alcohol**

FULLER W P & CO 330 E Market
(See side lines)

Dental Laboratories

Cox Fred 72 Phys bldg

Dentists

Burton Frank 20 Hale bldg
Burton F P Jr 73 San Joaquin bldg
Caldwell F M 211 Elks bldg
Caldwell H H 111 S San Joaquin
Caldwell W L 111 S San Joaquin
Carmichael & Free 336 E Main
Cureton Edw 306 Sav & Loan bldg
Davenport D D 105 E Main
Davidson J E 5 N Hunter
Gilbert A J 15 S Sutter
Glidden M D 122 E Main
Hall S H 29 San Joaquin bldg
Henderson R W 631 N Hunter
Henderson W R 45 S Sutter
Jones E L 64 Phys bldg
Kertchen D J 242 E Main
McCan F A Jr 218 Elks bldg
Mallett Albert 424 E Main
Minahan G E 14 S J Val Bank bldg
Walton Way 518 E Main
Fogg W S Lockeford
Blodgett J M Lodi
Gardner Harriet T Lodi
Hines L B Lodi
Tennyson C B Lodi
Williams E G Lodi
Moore J E Manteca
Turner P T Tracy

*** Dentists—Veterinary**

LONGLEY DR O A & CO 326 S
San Joaquin (See front cover)

*** Designers**

STOCKTON PHOTO-ENGRAVING
CO 327 E Weber (See bottom
lines)

*** Desks**

GUMMER F A INC 425-39 E
Weber (See opp p 104)
HORAN W J 410 E Main (See top
and bottom lines)

Detective Agencies

Hannan Patrol 122 E Main

*** Directory Publishers**

POLK-HUSTED DIRECTORY CO
P O Box 687 Sacramento

*** Dog Hospitals**

LONGLEY DR O A & CO 326 S
San Joaquin (See front cover)

*** Doors—Veneered**

SUNSET DOOR & SASH CO Park
cor Sacramento (See top lines)

*** Draftsmen**

KING WALTER 308-10 Elks Bldg
(See backbone)

*** Draperies**

GUMMER F A INC 425-39 E
Weber (See opp p 104)
HORAN W J 410 E Main (See top
and bottom lines)

Drayage

Blake Transfer Co 41 N Commerce
Goodell Transfer Co 30 W Weber
PACIFIC TRANSFER CO 36 S
Calif (See top lines)
RIVER EXPRESS CO 337 E Mar-
ket (See side lines)
Russell Transfer Co 115 Bridge
Stockton Transfer Co 527 E Market
Williams Transfer & Storage Co 7
Channel

Dressmakers

Baker Gertrude 418 E Lindsay
Brown Mrs Mabel 11 Schricke
bldg
Brown Mrs Wahl 307 Elks bldg
Harris Mrs M A 122 E Main
Kiernan Sisters 224 N San Joa-
quin

Stockton Record

PRINTED THIS BOOK

HERBERT E. WILLIAMSON
MONEY, REAL ESTATE, INSURANCE AND NOTARY
PHONE 1486 17 S. SAN JOAQUIN STREET

STOCKTON SAVINGS AND LOAN SOCIETY BANK

4% Interest on Savings Deposits, Payable Semi-Annually, Free of Taxes
 Capital Paid, \$500,000. Reserve and Undivided Profits, \$200,000. Safe Deposit Boxes

1913 CLASSIFIED BUSINESS DIRECTORY 373

Standard Mrs E S 610 S Van Buren
 Taff Mrs M H 435 S San Joaquin
 Dewey Mrs Estell Lodi

*** Drug Specialties**

CLAYES' NO-PERCENTAGE DRUG STORE Main cor Hunter
 (See top lines and p 3)

HOLDEN DRUG CO Elks Bldg and Main cor El Dorado (See front cover)

STOCKTON DRUG CO 401 E Main

Drugs—Retail

Bertholf C F 44 E Main
CENTRAL DRUG CO 45 N Calif
 (See top lines)

CLAYES' NO-PERCENTAGE DRUG STORE Main cor Hunter
 (See top lines and p 3)

Dean J B 916 E Main
EAGLE DRUG STORE 246 E Main
 Freitas & Son 231 E Weber
 Gateway Drug Store 34 S Sutter
HOLDEN DRUG CO Elks Bldg and Main cor El Dorado (See front cover)

HOTEL DRUG CO 129 E Weber
 Lubosch M E 108 E Main
 McComas Harry 533 E Main
 Patterson J A 441 E Main
 Public Drug Co 336 E Market
 San Joaquin Drug Co 35 S San Joaquin

STOCKTON DRUG CO 401 E Main
 Graham R L Lodi
 Weihe O A Lodi
 Zimmerman S H Lodi

Dry Goods

Abdallah P J 1440 E Main
 Chamberlain's 502 E Main
 Hale Bros 302 E Main
 Katten M & Bro 537 E Main
 Levy M & Bro 202 E Main
 Nemece Jos 1449 E Lafayette
 Pardini Guglielmo 318 S El Dorado

Sapiro Louis 701 E Main
 Smith & Lang 124 E Main
 Sterling The Main cor Hunter
 Friedberger & Kaiser Lodi
 Newfield M & Sons Lodi
 Nickel E F Lodi
 Smith D D Dry Goods Co Lodi

*** Dyers and Cleaners**

(See also Cleaners and Dyers)
GREENBERG JULIUS 29 N Calif
 (See Cleaners and Dyers)

Electric Light and Power Companies

Oro Electric Corporation 41 San Joaquin bldg
 Pacific Gas & Electric Co 38 S Sutter
 Sierra & San Francisco Power Co Tracy

*** Electric Motors**

SAMSON IRON WORKS 1100 S Aurora (See front cover)

*** Electric Pumping Plants**

SAMSON IRON WORKS 1100 S Aurora (See front cover)

Electricians

Commefford & Gnekow 336 E Weber
ELECTRIC & MACHINE EQUIPMENT CO 124 N El Dorado
ELECTRICAL ENGINEERING & SUPPLY CO 340 E Market
 Hewitt Mrs A I 9 N Calif
 Patzer A J 129 N Calif
 Powell N D 24 S Sutter
 Waltz & Treinor Elec Supp Co 113 S Calif
 Lodi Elec Appliance Co Lodi
 Senner & Handel Lodi
 Wallace F J Lodi

Electro Platers

Miller W A 134 N Calif

Elevator Manufacturers

VAN EMON ELEVATOR CO INC
 46-54 Natoma San Francisco

*** Elevator Repairs**

OTIS ELEVATOR CO Office and Factory Stockton North Point and Beach San Francisco

*** Embalmers**

WALLACE B C 135 N Stanislaus

Employment Agents

Carlin Jos 9 1/2 N Hunter
 King J B 110 N San Joaquin
 Reyner's Emp Agency 15 N Calif
 Steele W C 111 S San Joaquin
 Williams & Co 24 N Calif

*** Engines—Gas and Gasoline**

SAMSON IRON WORKS 1100 S Aurora (See front cover)
SHAW H C CO Weber cor Calif (See front edge)

HEART OF

South San Joaquin and Oakdale Irrigation Districts

ESCALON

Alfalfa and Fruit Lands. Fire and Life Insurance

SEE

Andrew Kern

Room 5

Escalon Bank Bldg.

Sewing Machines
McNEIL & CO., 626-30 E. Main

ROBERT POWELL

CONTRACTOR and BUILDER

PHONE 2618 R
 RES. PHONE 1298

PLANING MILL 945 E. LINDSAY, COR. SACRAMENTO