

Phone 541

Wet Wash
IMPROVED

YAZZAL

Smith & Kilmer, Props.
El Dorado Cor. Worth

Phone 541

You Can't Cover
the World with a
postage stamp, nor
can you cover the
World without proper
representation in your
City Directory
BUYING PUBLIC

HOTEL ARLINGTON

OUR DOLLAR ROOMS CAN'T BE BEAT
STEAM HEAT - PRIVATE FREE PHONE - HOT WATER - A1 SERVICE
SPECIAL RATES BY WEEK OR MONTH 30-32 S. SUTTER

336

POLK-HUSTED DIRECTORY CO'S

1913

Wells Fargo & Co Exp C L Clifford
agt
Wheatley Edw D farmer
Wiege John farmer
Willis Jane (wid Thos)
Willits Kay O farmer
Wittmeier Fred farmer
Wittmeier Jacob farmer
Wittmeier John farmer
Wittmeier Simon farmer
Woods Clarence eng
Young John L farmer
Young Wm L farmer

MANTECA

Located 14 miles southeast of
Stockton on the S P Ry

Abbott C D farmer rt 1
Aid John W farmer rt 1
Allen Alex D farmer rt 1
Allen S L farmer rt 1
Allenbaugh Clyde H real est
Andregg Casper shoemkr
Arnold Fredk D farmer rt 1
Aubry A E farmer rt 1
Austin Jas H farmer rt 1
Baker Earl conf
Bauer Albert C farmer rt 1
Baysinger Danl W carp
Bedgood Wm P elec
Berry Adelbert C farmer rt 1
Bert Mrs Dorothy waiter
Bitancurte Americo lab
BLAKE LEWIS H (Manteca Gar-
age)
Boberg John A sec-mgr Manteca
Lbr Co
Boles Mrs Eva farmer rt 1
Boman Gus farmer rt 1
Borze Jose lab
Branson Thos H farmer rt 1
Branson W P farmer rt 1
Briggs C O painter rt 1
Brow Frank Edrugs
Brown Wm C
Brownell Wm H P
Burgess Jas J farmer rt 1
Caine Patrick farmer rt 1
Caldwell H E barber
CALLANDER WM C (Manteca
Garage)
Candini Caesar lab
Carlson Adolph S (Johnson & Car-
lson)
Carlson Bertha M (wid P H)
Carlson Emma (wid J R)
Chaloner Louis B farmer
Chinn Walter farmer rt 1
Coburn Enoch cementwkr
Coburn J Leroy carp

Cole Theo S farmer rt 1
Comiskey F farmer rt 1
Convers Wm D clk
Corning Willard M clk P O
Cowell F Marion farmer rt 1
Cowell Joshua
Cowell Lester M foremn O M
Cowell
Cowell Otis M livery
Craig Thos F farmer rt 1
Cross Earl G farmer
Cross Saml N phys rt 1
Davis John B agt S P Co
Davis Orson E chf opr S & S F
Power Co
Day Jesse C cigars
Day Lee M lab
Decker Geo G painter
Delmege Louis J (Rawleigh & Del-
mege)
Dempsey Jos L farmer rt 1
Dias Manuel farmer rt 1
Dixon Mrs Ethel G (Manteca Pub
Co)
Dixon J Byron (Manteca Pub Co)
Douglass Eugene E real est
Dryden G F farmer rt 1
Elliott D C farmer rt 1
Elliott Jos farmer
Elliott Max R barber
Elliott Reuben F meat ctr
Ernst Chas farmer rt 1
Erstad Henry S plumber
Fairbank Ernest G farmer rt 1
Fannucchi Louis farmer
Fikes Fred W printer
First State Bank E J Norcross
pres Fred Norcross cashr
Freitas Antonio lab
Fritz Aug J comp
Ganalin Thos farmer rt 1
Gibson Bert farmer rt 1
Giuliani G B farmer rt 1
Glass Albert G farmer rt 1
Glass Geo B farmer rt 1
Goodale Robt H phys
Goodwin Benj A pres S S J Irrig
Dist
Grant Geo H farmer rt 1
Graves Cleve farmer rt 1
Graves J Walter farmer rt 1
Griggs Mary M (wid C P)
Gronner S O farmer rt 1
Guey C farmer rt 1
Hain John G farmer rt 1
Hain Wm M farmer
Hansen C N (Olson & Hansen)
rt 1
Hanson Paul lab
Harelson W B farmer rt 1

PETERS-WOLF CO.
GENERAL INSURANCE 37-39 E. CHANNEL TEL. 32
STOCKTON

ISLAND TRANSPORTATION CO.
STEAMER H. E. WRIGHT
LAUNCHES - - BARGES - - TOWING

OFFICE PHONE 376 NIGHT PHONE 931

OFFICE AND WHARF, CENTER, COR. WEBER STOCKTON

1913

COUNTY DIRECTORY

MANTECA 337

J. S. Amble, 102 Box 118

HARRELL WALTER H Blacksmithing and Horseshoeing
 Hastings Archie A farmer rt 1
 Hempel Rudolph M farmer rt 1
 Hender Raleigh O farmer rt 1
 Henos Jos J farmer rt 1
 Henry Milton J farmer rt 1
 Hickey Jas waiter
 Hines Walter M farmer rt 1
 Holman Fred S (Irrigation Bulletin)
 Hooper Murdock D (So San J Dev Co)
 Hopper Benj farmer rt 1
 Hotel Manteca (Mrs M E Sanford)
HOTEL WIGGIN (J C Wiggin) (See adv)
 Houston Andrew W farmer rt 1
 Houston Helen bkpr
 Huarte R farmer rt 1
 Hudson John H farmer
 Hudson John W dairymn rt 1
 Huette Frank X farmer rt 1
 Hunter Mrs M E farmer rt 1
 Irrigation Bulletin (F S Holman)
 Jack H S farmer rt 1
 Jeffries Edgar H right-of-way eng S S J Irrig Dist
 Jesse Frank driver
 Jewett David E farmer rt 1
 Johnson Edw R farmer rt 1
 Johnson Elmer L lab
 Johnson John farmer
 Johnson John C (Johnson & Carlson)
 Johnson & Carlson (J C Johnson A S Carlson) grocers
 Kall Alfred driver
 Kall Otto lab
 Keppel Aaron farmer rt 1
 Keppel Ezra farmer
 Keppel Garret farmer rt 1
 Keppel Paul farmer rt 1
 Klambt Chas farmer rt 1
 Konow Carl linemn

Kraetsch Fred elec
 Kuehn Gustav A farmer rt 1
 Lambert Peter F farmer rt 1
 Larson Amiel J farmer rt 1
 Larson Lawrence M rancher
LE TOURNEAU J WM Gen Mdse
 Levy Thos O farmer rt 1
 Lindenstien Chas G farmer rt 1
 Lindhardt Peter farmer rt 1
 Lowe Edwin farmer rt 1
 Lowe Nilus O mgr S & S F Power Co rt 1
 Lupton Edw farmer rt 1
 McAllister Henry rancher
 McBranson Hugh farmer rt 1
 McCabe Jos E clk
 McCandless Anderson L lab
 McCurdy O farmer rt 1
 McElwee Frank B real est
 McKinney Ward elec
 McManus Emory lab
 McMullen Cleveland A lab
 McMurray Theo Z farmer rt 1
 McPherson H L & Co T H McPherson mgr gen mdse
 McPherson Tracy H mgr McPherson & Co
 Malcolm John S farmer rt 1
 Manteca Board of Trade J R Pearson Jr sec
MANTECA ENTERPRISE (Manteca Pub Co) J B Dixon Editor
MANTECA GARAGE (W C Callander L H Blake) (See side lines)
MANTECA LUMBER CO C F Palm Pres J A Boberg Sec-Mgr
 Manteca Pub Co (J B and E G Dixon) pubs Manteca Enterprise
 Manteca Telephone Co (Edw Powers)
 Markley Wm H farmer rt 1
 Martin Gardner well borer
 Meunier E farmer rt 1
 Mewborn Asa clk
 Mewborn Mack H farmer rt 1

J. H. UTT
LAND

\$12

DOWN AND \$12 PER MONTH

BUYS 5 ACRES IN ANY OF MY TRACTS

See Me About It 22 S. Calif. TEL. 860

Ask Your Grocer

FOR

Miller's BEST FLOUR

More Loaves Better Bread

HOTEL WIGGIN

J. C. WIGGIN, PROP.

Modern Rooms, Hot and Cold Water, Electric Lights, Baths, Etc.

FIRST CLASS DINING ROOM IN CONNECTION

TEL. 98

MANTECA, CAL.

STOCKTON AUTO SUPPLY CO.

LEE TIRES ENSIGN'S OILS

PHONE 17 CHANNEL COR. SAN JOAQUIN STS.



Manufacturers
of the

Kryptok
Invisible
Bifocal

407
E. MAIN ST.
STOCKTON



HOTEL
BRONX

EUROPEAN
MODERN
BUS MEETS
ALL TRAINS
640 E. MAIN
Phone 3650

PHONE 67 39 N. SUTTER

DOOLITTLE & CO.
STOCKTON

LOANS
REAL ESTATE
INSURANCE

338 POLK-HUSTED DIRECTORY CO'S 1913

Miller E H farmer rt 1
Mills Geo K farmer rt 1
Mocettini Natale farmer rt 1
Monson Swan L farmer rt 1
Moore J E dentist
Moore J Stuart farmer rt 1
Morgan Frank painter
Muller John
Napier John J farmer rt 1
Nelson John farmer rt 1
Newman J Irving clk
Norberg John O farmer rt 1
Norberg Victor farmer rt 1
Norcross Edw J pres First State Bk
Norcross Fred cashr First State Bk
Norman Chas A crmymn
Norris F Edgar barber
O'Leary Fred S vet surg
Olmstead J H surveyor
Olson Andrew G (Olson & Hansen)
Olson Jas farmer rt 1
Olson & Hansen (A G Olson C N Hansen) real est
Orem Chas P farmer rt 1
Overshiner Jesse J
Pac Tel & Tel Co Edw Powers agt
Pahl Walter R plumber
Palm Chas F pres Manteca Lbr Co
Palm Carl F Jr asst mgr Manteca Lbr Co
Patterson Wm V farmer rt 1
Payne Cumberland G farmer rt 1
Pearce Henry J farmer rt 1
Pearson John tel opr
Pearson Jos R Jr sec Bd of Trade
Perkins Frank J farmer
Peters Chas E carp
Peterson C H farmer rt 1
Pierce Chester clk
Pierce Edw N sec S S J Irrigation Dist rt 1
Pierce Mark W lab
Post Office J C Wiggan P M
Powell Homer E farmer rt 1
Powers Edw (Manteca Tel Co) agt W F & Co Exp
Purdy C W farmer rt 1
Ramsey Geo A farmer rt 1
Rankin Wm D farmer rt 1
Rawleigh Jas J (Rawleigh & Delmege)
Rawleigh Mrs Lillian E boarding
Rawleigh & Delmege (J J Rawleigh L J Delmege) men's furngs
Reed John S farmer rt 1
Reynolds Geo R farmer rt 1
Ritter Anton H farmer rt 1

Ross Victor D farmer rt 1
Salmon Alfred J farmer rt 1
Salmon Arthur farmer rt 1
Salmon A H farmer rt 1
Salmon Everett E vineyardist rt 1
Salmon Fred farmer
Salmon Geo R farmer rt 1
Sanford John U farmer
Sanford Mrs Mary E (Hotel Manteca)
Schnell J farmer rt 1
Scott David farmer rt 1
Schutt Albert farmer rt 1
Sharenbroch Arthur R farmer rt 1
Sharenbroch Fred E lab
Shragle Albert baker
Silbers John W farmer rt 1
Snow C D W A Stahmer mgr meats
Solzo Frank lab
South San Joaquin Development Co (M D Hooper)
SOUTH SAN JOAQUIN IRRIGATION DISTRICT B A Goodwin Pres E N Pierce Sec C E Steinegul (Escalon) J S Moulton (Ripon) W J Woodward (Manteca) C T Wiggan (Lathrop) Directors
Southern Pacific Co J B Davis agt
Sproston S farmer rt 1
Stahmer Wm A mgr Snow & Co
Stava Wm draftsman
Stetler Floyd E clk
Swickard Andrew res eng S S J Irrig Dist
Temple E farmer rt 1
Tianin Jos L farmer rt 1
Trombetta F farmer rt 1
Van Etten P H eng S S J Irrig Dist
Veach Andrew farmer
Vernon Chas farmer rt 1
Walrad Timothy D farmer rt 1
Warren Elias C farmer rt 1
Warren Ernest E farmer rt 1
Waymire Wm C
Wells Fargo & Co Exp Edw Powers agt
West Geo & Son winery
Western Union Telg Co Edw Powers mgr
Whelan Howard farmer
Whelan Howard N clk
White E J farmer rt 1
WIGGIN J C (Hotel Wiggan) Postmaster (See adv)
Williams Mrs Charlotte P farmer rt 1
Williams John H farmer rt 1
Wilson Frank farmer rt 1

TEL. 411
MANTHEY
BROS.
420 N. CALIFORNIA

CARPET CLEANING
REFITTING AND LAYING
UPHOLSTERING AND
MATTRESS MAKING



MOVE ANYTHING
FIREPROOF WAREHOUSE
38 S. CALIF. TEL. 70

Tel. 954

PIETRO MUZIO BAKERY

Italian and French Bread and Galetta
317 E. MARKET

1913

COUNTY DIRECTORY

PETERS 339

Wollner Wm C plumber
 Woodward Walter J director S S
 J Irrig Dist

MOORLAND

Located 14 miles west of Stockton on Santa Fe, station name Middle River

(For additional names see Woodward)

Alta Asparagus Co C M Owen supt
 Assmussen Hans lab
 Baker C A agt Santa Fe
 Bertini Bros farmers
 Bidleman W A elec
 Burden Ralph E telg opr
 Butters Frank E eng
 Byer L C sec foremn

Calif Asparagus Growers Assn E O
 Sylvester sec

Canovan Arthur tmstr

Cates Wm lab

Coe Fred T lab

Diller David lab

Eldred L B supt Rindge Land & Nav Co

Ellis Frank L eng

Empire Asparagus Co C M Owen supt

Ferguson Elmer T lab

FILCHER ROY M Supt Rindge Land & Nav Co and P M

Gay Geo tmstr

Gilli G mgr Gilli & Co

Gilli & Co G Gilli mgr farmers

Giorgio Spanni gardener

Goodrich J Leonard elec

Haugen Benj M clk

Healy Fred H fishermn

Hing Lee Co Louis Linn mgr farmers

Hopper Thos B farmer

Jones Tract Asparagus Co Tai On & Co mgrs

Kearney Chas lab

Littlejohn E W farmer

Nagle Adam lab

O'Connell Philip farmer

Owen C Max supt San Joaquin Asparagus Co

Pearce W N elec

Poe Wm lab

Postal Tel Cable Co C A Baker mgr

Quong Sang Asparagus Co

Rindge Land & Nav Co R M Filcher supt

Sagara M farmer

San Joaquin Asparagus Co C M Owen supt

San Joaquin Fish Co Lee Yeoung mgr

Santa Fe Ry C A Baker agt

Smith Jas H elec

Stowe Dew C mach

Stowe D D carp

Sylvester Ernest O sec Cal Asparagus Growers Assn

Sylvester & Graves asparagus

Toy Fon & Co Toy Fun mgr farmers

Whipple Clayton B bridge tndr

Whipple W C bridge tndr

Wing Hing Lung gen mdse

Yep Quin Den Tom Foo mgr farmers

PETERS

Located 12 miles east of Stockton on the S P Ry

Anderson Chas H poultrymn

Anderson Martin poultrymn

Beydoso John poultrymn

Birshwall Henry poultrymn

Blair Frank poultrymn

Blake Mary H farmer

Boyke Mary J (wid John)

Cottle Leroy farmer

DALTON THOS G Gen Mdse and P M

Delmas Mrs Magdalene farmr

Flozo Geo poultrymn

Gibson Robt D sec foremn

Goiri Felix poultrymn

Gruwell Robt C farmer

Hall Walter S farmer

Hecker Harry poultrymn

Heines John H farmer

Hoult Thos B farmer

Jackson Edw lab

Lang Philip poultrymn

Larson Ole poultrymn

Leshner Isaiah farmer

Linn Peter F farmer

Martin Harry poultrymn

Parker Frank F farmer

Parker John V farmer

Reuge Wm poultrymn

Riba Batista farmer

Rose Humphrey H poultrymn

Sanguinetti Angelo farmer

Sanguinetti Geo A farmer

Sanguinetti Jas S farmer

Sanguinetti Louis F farmer

Sanguinetti Paul J farmer

Sanguinetti Stephen farmer

Scallan Nicholas poultrymn

Scheffel Hugo B O farmer



HOTEL BRONX

EUROPEAN MODERN
 BUS MEETS ALL TRAINS
 640 E. MAIN
 Phone 3650

Stockton Tool Works

C. JORY & SONS, Props.
TELEPHONE 2868

MANUFACTURERS OF FRESNO SCRAPERS MACHINE BLACKSMITHING

Agricultural Machinery Made and Repaired Punching, Shearing and Trip Hammer Work

AURORA STREET, N. E. CORNER LAFAYETTE

3 PHONES
7
112
2

TAKE A

TAXI

STOCKTON
TAXICAB CO
WHITE
PANEL
SERVICE

IMPERIAL HOTEL

EUROPEAN PLAN

RATES:

50¢ to \$2.00

J. ED. MITCHELL, Prop. STOCKTON PER DAY

340

POLK-HUSTED DIRECTORY CO'S

1913

Sheldon Glen agt S P Co
Snow Benj farmer
Snow Walter B farmer
Sola Andrew J farmer
Solari Louisa (wid John) farmer
Southern Pac Co Glen Sheldon agt
Webb Jasper N farmer
Webb Jos N farmer
Weylandt Alfred poultrymn

Buchanan Le Roy M eng
Buchanan Percy E eng
Buchanan Walter S farmer rt 2
Buck Francis D dairymn
Buck Geo rancher
Buck Geo W dairymn
Buck Jas dairymn
Buck Wm G farmer
Burdg A J farmer rt 1
Burdg Frank A farmer rt 1
Butters Henry A farmer
Caldwell Edw S clk
Campbell C J farmer rt 1
Campbell John H realty mgr Ripon
Nursery & Imp Co

RIPON

Located on the S P Ry 17 miles
southeast of Stockton

(For additional names see Escalon
and Manteca)

Alexander Edw tmstr
Alexander Edward F rancher
Ames Frank farmer rt 2
Andersen A painter
Anderson A J farmer rt 2
Anderson Chas P vineyardist rt 2
Anderson Peter E farmer
Austin Nellie M (wid F E) rt 2
Bainbridge E D farmer
Baldrige C W farmer rt 1
Ballou Edwin C farmer rt 2
Bank of Ripon H L Dickey cashr
Barkaw Albert blksmth rt 1
Bartholomew Henry farmer
Berry David M farmer rt 1
Beswick W L farmer rt 2
Bigelow Chas janitor
Bland Geo R (Ivey & Bland)
Bly Albert R farmer
Bodeson Francis C
Bodeson Francis L carrier R F D 1
Bodeson Jos A tmstr
Boge Henry W lab rt 1
Bonnett Joseph W farmer
Boscovich John lab
Boscovich Nicholas lab
Braddock G G farmer rt 1
Bradigan Fred farmer rt 2
Bream Mrs Grace
Bremer Mrs J S farmer rt 1
Brennan F E farmer rt 1
Brennan Geo W farmer rt 1
Brennan Harry T farmer rt 1
Brenna Stephen E farmer rt 1
Britt J H carp
Brown Geo W farmer rt 2
Brown Joel V farmer rt 2
Brown Maria E (wid Leander)
Brusie Mrs Sylvia
Buchanan Alvin F eng
Buchanan D Lamber eng
Buchanan Hollis A foremn

Carr Wm W farmer rt 1
Carroll Jas P farmer rt 1
Carter Fred farmer rt 2
Carter Jas W farmer rt 1
Cedergren Wm farmer rt 2
Chadwick Joshua W farmer
Chapman Frank H carp
Charotte E C farmer rt 1
Chipman Geo driver
Chrisman J C prin Grammar Sch
Clark S P farmer rt 1
Clausen Albert R driver
Clausen Hans P farmer rt 1
Clendenin Geo H farmer rt 1
Clendenin Hugh farmer rt 1
Clinton Mrs Kate farmer rt 1
Collins Earl T farmer rt 2
Collins J A farmer rt 1
Colson Louis farmer rt 2
Cook Mrs Fred farmer rt 1
Cook John
Cookson Saml T farmer rt 2
Cosgriff Mathew J farmer rt 1
Cowden Benj J agt S P Co
Cowell Wm W
Curlis Ira tmstr
Curtis Mrs Bordinia
Dahl Oluf (Hotel Markham)
Daly P H farmer rt 2
Davis Geo R (A J Nourse Co)
Davis Harold T plumber
Delmege C G farmer rt 2
De Vee Monroe (Ripon Hotel)
De Wolf H A farmer
Dickey Hugh L cashr Bank of
Ripon
Diel Jos H farmer rt 1
Donahue Thos P farmer rt 1
Dossey J Irwin mgr Ripon Hotel
Dowhower Grant farmer rt 2
Dowling David A lab
Duree Albert lab rt 1
Easey Chas A farmer rt 1
Eddlemon Chester A farmer rt 1

Stockton Record.

PRINTED THIS BOOK

HERBERT E. WILLIAMSON
MONEY, REAL ESTATE, INSURANCE AND NOTARY
PHONE 1486 17 S. SAN JOAQUIN STREET

STOCKTON SAVINGS AND LOAN SOCIETY BANK

4% Interest on Savings Deposits, Payable Semi-Annually, Free of Taxes
 Capital Paid, \$500,000. Reserve and Undivided Profits, \$200,000.^e Safe Deposit Boxes

1913 COUNTY DIRECTORY RIPON 341

Eichoff Geo H rt 1
 Ellenwood Jay W farmer rt 1
 Embree Virgil E lab
 Evans John C farmer rt 2
 Evans Llewellyn L prin High Sch
 Farschon Wm A farmer
 Feller John farmer rt 2
 Fink Mrs Eva farmer rt 1
 Filloon Roy farmer rt 1
 Filloon Wm C farmer rt 1
 Flehearty Bert farmer
 Forrest Paschal D farmer rt 2
 Foster Moses N farmer rt 1
 Fowler Warren W farmer rt 1
FRANKFORT INS CO South &
 Smethers Agts
 Freeman Mrs Mary
 Frederick Mrs Barbara G bkpr
 Frederick Chas farmer rt 2
 Frederick Clara (wid B G)
 Frederick Mrs Gene bkpr
 Frederick Harrison farmer
 Frederick John W H farmer rt 2
 Frederick Mrs Nancy farmer rt 2
 Frenzia Bros farmers rt 1
 Freshour Arthur D lab
 Freshour Wm A dairymn
 Freyman Mrs Mary farmer rt 2
 Fritz Fredk farmer
 Funch A C farmer rt 2
 Funkhouser Richd farmer rt 2
 Gardner Ralph W farmer rt 1
 Garner Frank B carp
 Garner Linn asst mgr
 Garrett Albert real est
 Garrett Grace A music tchr
 Garrett Wm B rancher
 Garrison John farmer rt 2
 Garvey Wm farmer rt 2
 Gavas Gustav farmer rt 2
 Gilmore J L farmer rt 1
 Glass Jos farmer rt 1
 Goeltz L farmer rt 2
 Goetz T farmer rt 1
 Goodwin Benj A farmer rt 2
 Goodwin Elmer B farmer rt 2
GOODWIN IRVIN A (Ripon Ga-
 rage) (See adv)
 Gould W B farmer rt 2
 Gordon Lewis E farmer rt 1
 Gotschall Karl A mgr Ripon Lbr
 Co
 Gould Ned B phys
 Graham Mrs Nevada
 Grandbois Moise D farmer rt 1
 Graves Frank farmer rt 2
 Grogan Bernard farmer rt 1
 Gross John E farmer rt 1

Groves Robt H farmer rt 2
 Hageman Carl P real est
 Hals Bros farmers rt 2
 Hammond Warren L farmer rt 2
 Haubrick B F farmer
 Haun F farmer rt 1
 Hawkins Vera tchr High Sch
 Hascall Byron G farmer rt 2
 Hearty Chas rt 1
 Hearty Thos F farmer rt 1
 Heck Edw lab
 Henry Edmund farmer rt 1
 Henry J C carp
 Henry J Murdock stockmn rt 1
 Hester Rev Oliver M (M E) rt 1
 Hiatt H C farmer rt 1
 Hiatt L B farmer rt 1
 Higgins Chas J lab
 Hill John H farmer rt 2
 Hitchcock Crawford C farmer rt 1
 Hitchcock Geo C farmer rt 1
 Hitchcock Henry H farmer rt 1
 Hoffman Florence livery
 Hoffmann Leslie
 Hoffmann Mary J (wid John)
 Holm Karl P farmer rt 1
 Holmes Peter K farmer rt 1
 Hotel Markham (Oluf Dahl)
 House Chas E farmer rt 1
 Housten Norman C blksmth rt 1
 Hughes Thos C farmer
 Hughes U Grant farmer rt 2
 Huntemann Fredk C clk
 Hutchinson Frank H real est and
 Constable
 Hyers Arthur F drugs
 Ingal's Albert J carp
 Ingram Sandy farmer rt 2
 Irvine J H farmer rt 2
 Kernicka Frank farmer rt 1
 Ivey Wm E (Ivey & Bland)
 Ivey & Bland (W E Ivey & B
 Bland) agts San Joaquin Crmy
 Jensen J C farmer rt 2
 Jewart J M farmer rt 2
 Johnson Chas farmer rt 2
 Johnson Geo E farmer rt 1
 Johnson J Emanuel (Lindblom &
 Johnson)
 Johnston J W farmer rt 1
 Jones J Monroe farmer rt 2
 Jorgensen Niels farmer rt 2
 Keldgord Clarence bkpr
 Keldgord Elmer carp
 Kelly John lab
 Kelly Rev John J (Congregational)
 Kennedy Wm G gen mdse
 Kerner Chas H tmstr rt 1

HEART OF
 South San Joaquin
 and Oakdale
 Irrigation Districts

ESCALON

Alfalfa and Fruit
 Lands. Fire and
 Life Insurance

SEE
Andrew Kern
 Room 5
 Escalon Bank Bldg.

PIANOS

MONBIL & CO.

E. MAIN 626-30

ROBERT POWELL

CONTRACTOR and BUILDER
 PHONE 2618 R
 RES. PHONE 1298
 PLANING MILL 945 E. LINDSAY, COR. SACRAMENTO

LUARD SHEET METAL WORKS

CORNICE
SKYLIGHTS
HEATING
VENTILATING
TIN ROOFING

AUTO
SHEET-METAL
WORK

222 E. CHANNEL
Phone 531

STANDARD
NEW HOME
DOMESTIC
Sewing
Machines
and Supplies



Parts and attachments
for all machines,
repairing and renting
Round belting all sizes
Goods mailed on
receipt of price

J. E. WOOD
1223 E. Weber Ave.
Phonen: 2583 L
2583 J

SUNSET DOOR AND SASH CO.

Doors, Windows, Moulding, Door and Window Screens
MILL WORK OF ALL KIND
Park Av. and Sacramento St. STOCKTON

342

POLK-HUSTED DIRECTORY CO'S

1913

Keyes Chas H farmer
Kincaid Albert H (Ripon Meat Co)
Kincaid Fred H farmer rt 1
Kincaid P H rancher
Kincaid Russell B (Ripon Meat Co)
Kincaid Wm H farmer rt 2
King A W farmer rt 2
Klas Mrs Carrie A baker
Klas Henry baker
Klinger Wm H rancher rt 2
Kuesthardt Gottlob W well borer
Larson Andrew farmer rt 2
Larson Frank farmer rt 2
Lavaggi A farmer rt 2
Lawrence E R farmer rt 2
Lawton Chas R farmer
Leek Jos L painter
Leffler Mrs Kate farmer rt 2
Lemoine Geo T lab
LEMOINE WM H - Blacksmithing
and General Repair Work
Levy Jos farmer rt 2
Lewellen Harrell A conf
Lewis Benton A farmer rt 2
Liesy Geo H farmer rt 1
Liesy Levi E rancher rt 1
Lindblom Aug (Lindblom & John-
son)

Lindblom & Johnson (Aug Lind-
blom J E Johnson) dry gds
Lucas Roy F farmer rt 1
McCaffrey John H farmer rt 2
McCausland Audley lab
McCausland Clinton rancher
McCausland Irving clk P O
McCausland Jas A lab
McKee Elizabeth E (wid E T)
McKee Francis E (McKee & Rey-
nolds)
McKee & Reynolds (F E McKee
S W Reynolds) gen mdse
Magruder Albert R asst cashr Bank
of Ripon
Mann Danl L
Manteufel Mrs Lizzie
Markham Geo C farmer
Markham Geo M farmer
Martin R E farmer rt 2
Martin W K farmer rt 2
Mathews Geo B farmer
Mayes Danl farmer rt 1
Mello Jose M farmer rt 1
Melton Sarah M (wid J C)
Merrill Ray H real est
Merritt Chas E farmer rt 1
Merritt John R farmer rt 2
Merritt John W farmer rt 1
Miller Mrs Belle farmer rt 2

Miller Chas A farmer rt 1
Miller Ernest bklsmt rt 1
Miller Geo farmer
Miller Jas H farmer rt 1
Miller Jesse F farmer rt 1
Miller J Frank carp
Miller Milton E farmer rt 1
Miller Wm C farmer rt 2
Miller Wm T farmer rt 2
Minges Geo E farmer rt 1
Moncure Richd A teaming contr
Mondon Francis A farmer rt 1
Montgomery Wm J barber
Moore Allen farmer
Moore W H farmer rt 2
Morgan J D farmer rt 1
Morgan Wm lab
Mortimer Jas E farmer
MOULTON JAS S Director South
San Joaquin Irrigation District
Postmaster
Moyer Wm E farmer rt 2
Murphy Bros (W J and Thos) gen
mdse rt 1
Murphy Fred R (Ripon Theatre)
Murphy Thos (Murphy Bros)
Murphy Wm J (Murphy Bros)
Murray Geo farmer rt 2
NEW YORK LIFE INS CO South
& Smethers Agts
Nicewonger G Carey stockmn rt 1
Nicewonger Hayes farmer rt 1
Nicewonger Mrs Mary E farmer
rt 1
NOURSE A J CO THE (A J Nourse
G R Davis) Hardware Imple-
ments Furniture Electrical Sup-
plies Paints Plumbing Etc
Nutt Henry D shoemkr
Nutt Kate farmer rt 2
Nutt Roy B farmer rt 2
Obert Chas farmer rt 2
O'Dell Harris W rancher
O'Malley Mrs Anne farmer rt 1
Oney Walter W farmer rt 2
Osborne Geo W clk
Pac Tel & Tel Co Yable & Co agts
Parr W B farmer rt 2
Patterson Nathan G farmer rt 2
Paul Leonard A carp
Pearson C C farmer rt 2
PENNSYLVANIA FIRE INS CO
South & Smethers Agts
Peralta Frank S rancher rt 2
Pierce J Austin lab rt 2
Pope Jas S farmer rt 1
Post Office J S Moulton P M
Potter Seth W farmer rt 1

REAL ESTATE
STOREY
305 E. WEBER Av. Phone 171



INSURANCE
TRIOLO
STOCKTON

**WILKES
PEARSON
KNUTZEN CO.**

WHOLESALE
RETAIL
GROCCERS

705 E. WEBER
PHONE 625

FRESH ROASTED COFFEE FINE POULTRY

1913

COUNTY DIRECTORY

RIPON 343

Poulos Steve farmer rt 2
Poynor Elmer B farmer rt 1
Poynor Ples G farmer rt 1
Pratt Morgan farmer rt 1
Pratt Newton farmer rt 1
Prescott I S farmer rt 1
Proudfit Chas A carrier R F D 2
Proudfit Mrs Ethel V clk P O
Putterbaugh Geo farmer rt 2
Rasmussen Rasmus farmer rt 2
Reynolds Jesse C farmer rt 2
Reynolds Syndey W (McKee & Reynolds)
Rhoades Walter F squirrel inspr
Ribal E J farmer rt 1
Rienhart Jos E farmer rt 1
Ripon Board of Trade K A Gotschall sec
RIPON GARAGE (I A Goodwin)
(See adv)
Ripon Hotel (Monroe De Vee)
Ripon Lumber Co K A Gotschall mgr
Ripon Meat Co (R B and A H Kincaid)
Ripon Nursery & Improvement Co J F Stuart pres
Ripon Record (A J Show)
Ripon Theatre (F R Murphy) motion pictures
Ripon Union High School L L Evans prin
Ritchie Mrs Mary farmer rt 1
Roberts Arthur dep Co Assessor rt 1
Roberts Earl farmer rt 1
Roberts John F farmer rt 1
Roberts Mrs Mary farmer rt 1
Robles Gabriel N farmer rt 1
Ronk David farmer rt 2
Ronk Henry R
Ronk J Herbert farmer rt 2
Rork John well borer

Ross Alex farmer rt 1
Royce Geo O farmer rt 1
San Joaquin Creamery Ivey & Bland agts
Schmeidt John J farmer rt 2
Schmitt Rudolph W nurserymn rt 2
Schrader Ernest A farmer
Scossa Chas rancher
Searcy Louis J sec foreman
Show Andrew J (Ripon Record)
Sites J M farmer rt 2
SMETHERS THOS C (South & Smethers) Notary Public
Smith Asa farmer rt 2
Smith Mathew farmer rt 1
Smith Milton W farmer rt 1
Smith Silas L farmer rt 2
SOUTH CLINTON W (South & Smethers)
South San Joaquin Table Grape Growers Assn E E Welty sec
SOUTH & SMETHERS (C W South T C Smethers) Real Est and Ins (See side lines and Real Est)
Southern Pacific Co B J Cowden agt
Speaker Jas H foremn Ripon Lbr Co
Speaker Warren P lab
Springer Mrs Fleta C
Stagnero Peter farmer rt 2
Stephenson Frank S farmer rt 2
Strother W E farmer rt 1
Stuart Arthur L v-pres Ripon N & I Co
Stuart A V pres A V Stuart & Co
Stuart Ernest F farmer
Stuart Jos F pres Ripon Nursery & Imp Co
Stuart Lester V rancher
Stuckey Bert C farmer rt 2
Summers Dani rancher rt 2
Tatterson Geo W farmer rt 2
Thomas O G farmer rt 2

**WE CAN
Collect
YOUR
Outstanding
Accounts
TRY
US**

Phone 986

**Ross
Mercantile
Agency
208-9-10
ELKS BLDG.**

**What's
Your
Line?**



**If
Your Card
Were Here
Everybody
Would
Know!!**

**RIPON GARAGE
and Machine Works**

I. A. GOODWIN, Prop.

Automobile and Gas Engine Supplies, Reliable Repairs and Adjustments. Shops Equipped with Modern Machinery.

TEL. 71

RIPON

GALL & DONALDSON

**Fireproof Storage Garage TIRES, REPAIRING AND SUPPLIES
22-32 E. Miner Tel. 3685**

HOTEL DALE

MRS. E. E. COUNSELL, PROP.
 EVERYTHING NEW AND ALL MODERN CONVENIENCES
 STOCKTON
 PHONE 2298
 34 S. SAN JOAQUIN ST.

RIVER EXPRESS CO.

DELIVER IN
 STOCKTON
 SAN FRANCISCO
 OAKLAND
 ALAMEDA
 BERKELEY
 SACRAMENTO
 NAPA

Stockton Office
 337 E. MARKET
 Tel. 2331

CLARK & HENERY CONSTRUCTION CO.

CEMENT, CRUSHED ROCK AND CONTRACTORS' SUPPLIES

PHONE M. 463

CLARK & HENERY BLDG

STOCKTON

344

POLK-HUSTED DIRECTORY CO'S

1918

Thomas Theo W farmer rt 1
 Thompson Casey H harnessmkr
 Thomson Bros (Stuart and R L)
 gen mdse
 Thomson Ralph L (Thomson Bros)
 Thomson Stuart (Thomson Bros)
 Thorp Frank M farmer
 Filten J C farmer rt 2
 Towne Danl M farmer rt 2
 Treder R J farmer rt 2
 Trondjhen Svend O farmer rt 2
 True — rt 1 box 74d
 Turner Mrs Charity farmer rt 1
 Turner Chas farmer rt 1
 Vandiveer Wm E farmer rt 1
 Van Gilder Geo E farmer rt 1
 Van Slyke A T farmer rt 2
 Vickers Geo A barber
 Vierbrock Chas farmer rt 2
 Vinet Joseph P farmer rt 1
 Von Glahn B H farmer rt 1
 Von Glahn F W farmer rt 1
 Wagener Edw farmer rt 1
 Wagener Geo farmer rt 1
 Wakefield H W farmer rt 1
 Walsh Wm farmer rt 1
 Waterman F C farmer rt 2
 Waters J W farmer rt 1
 Watkins John P farmer
 Wells Fargo & Co B J Cowden agt
 Welty Eugene E dep inspr Co Hort
 Comn
 Whaley Saml farmer rt 1
 Whitesides Jonathan L farmer
 Wille Fredk C farmer rt 2
 Wille Henry A farmer rt 2
 Wille John farmer rt 2
 Wille Jos J farmer rt 2
 William Chester R rancher rt 2
 Wilson Ellen (wid L L)
 Winsor S A farmer rt 1
 Wolfe John W farmer rt 2
 Yapple Mrs Blanche boarding
 Yapple & Co J S Moulton mgr whse
YAPPLE ESTILL P Auto Express
 Transfer and Livery
 Yapple Perry pres Yapple & Co
 Yarbrough Mrs A G farmer rt 2
 Ziegler Saml farmer rt 1
 Zumwalt P Eugene farmer rt 1

TERMINOUS

Located on Bouldin Island 22 miles
 northwest of Stockton
 Adams Wm H farmer
 Brandon — farmer
 Codosa Z farmer

Fraser Danl farmer
 Gulick John D carp
 Hunt John fisherman
 Kenyon Chas E fishermn
 Larson J farmer
 Osterhouse — farmer
 Sjogren Albert fishermn
STABELL LOUIS F Gen Mdse and
 P M
 Watt Wm A eng
 Weggade Albert farmer

THORNTON

Located on the W P Ry 20 miles
 northwest of Stockton
 Babcock Arthur C biksmth
 Baker Wm farmer
 Barber Edw H farmer
 Barber Geo L farmer
 Brown Herman hunter
 Brown J Willis farmer
 Carlson John tmstr
 Clark Roy lab
 Cox Edw B farmer
 Dawes Annie farmer
 Dawson Jacob K farmer
 Deitz O farmer
 Doty John C farmer
 Dougherty F N farmer
 Erickson Carl farmer
 Falquist Peter farmer
 Furness Edgar L elec
 Garsuch Jas L farmer
 Giardi R farmer
 Gilmere John F lab
 Gilmers Frank lab
 Goodwill Cecil C farmer
 Gulide Frank farmer
 Haehnlen John C farmer
 Haehnlen Wm F farmer
 Hall Geo farmer
 Harrington Earl T farmer
 Hesse Albert farmer
 Hickey Jas F farmer
 Hickey John J farmer
 Howard Geo M farmer
 Imig Fred farmer
 Inge E B supt Staten Island
 Johnson Fred O chauffeur
 Johnstone Thos farmer
 Jung Geo carp
 Kise Philip A farmer
 Koontz Geo M farmer
 Koontz Henry farmer
 Koontz Oscar agt W P Ry
 Koontz Wm H farmer
 Lohman Ferdinand G lab

F. N. FOSTER AUTO
 AND CARRIAGE
 PAINTER
 MONOGRAMS AND LETTERING A SPECIALTY
 27 W. CHANNEL TEL. 3680

GEORGE HORNAGE

REAL ESTATE AND COLLECTIONS

CALL ON HIM FOR FIRE AND LIFE INSURANCE

TELEPHONE 2141

28 SOUTH CALIFORNIA STREET

1913

COUNTY DIRECTORY

TRACY 345

Maddox H I carp
Moine John farmer
Olney John P farmer
Patterson A McF civ eng
Pearson Lincoln L eng
Quenell Angus eng
Quenell Nelson farmer
Rainy Jos farmer
Ray Clarence J farmer
Ray Ren R farmer
Ray Saml T farmer
Roberts R M farmer
Rutherford Walter T farmer
Sanford W M farmer
Schmidt Hans N lab
Thompson Henry A lab
Thompson Vaskey E rancher
Thornton Arthur farmer
Tubbs Orland farmer
Turney Ward farmer
Van Meter Eugene S farmer
Van Meter Thos I farmer
Van Meter Walter R farmer
Wallace E L farmer
Westfall Geo farmer
Wiegand J M farmer

TRACY

Located on the S P Ry 20 miles
southwest of Stockton
(For additional names see
Banta)

Abernethy Edw
Abernethy Wm E clk
Adair Ernest M firemn
Adair Robin G firemn
Ahrens F Henry well borer
Aiello Chas repr
Aiello Goettano lab
Alberg Rasmus H eng
Alexander Sel brkmm
Altamirano B lab
Altamirano Ernest clk
Altamirano Manuel J ranch foremn
American The (Mrs Helen Nagaer)
fur rms
Ames Roy W ry postal clk
Anderson David eng
Andrews John A ftr
Anton John C eng
Archibald Harry G firemn
Arlington The (C J Fraler) fur
rms
Arlington Theatre (C J Fraler)
Armstrong Wilson E plumber
Artz Clarence O switchmn
Associated Pipe Line Co L H Stir-
ling foremn

Avilla Frank D horseshoer
Axley John H lab
Bagley Danl farmer
Pagley Edw L farmer
Bailey Danl C eng
Bailey Edgar A butcher
Baley Mrs Stella fur rms
Ball Amos G well driller
Ball Everett A brkmm
Bandel Aug L cond
Bank of Tracy J C Droge pres O H
Foot cashr
Bankhead David B eng
Banta Edw H saloon
Barr Fred E linemn
Bartels Mrs Esther M dressmkr
Batterman Fredk M lab
Batterman Henry W farmer
Baty Jos H farmer
Bays Geo A brkmm
Beach Harry A inspr
Beanland C L brkmm
Beanland Walter L baggagemn
Beckwith Chas brkmm
Beckwith Russell brkmm
Bell Elmer L lab
Bender Harry S brkmm
Berger Fred H brkmm
Berlault Chas stonectr
Berntzon Arthur H brkmm
Bernal Ernest R clk
Bernal Ray brndr
Berry Floyd S switchmn
Berry L Geo brndr
Bigelow Edmund C firemn
Billings Frank D eng
Bishop Silas S clk
Blakely Benj eng
Blackman Harry T clk
Bobb Clarence K lab
Boothby Chas W firemn
Bordes Olive bkpr
Borikas Polas lab
Bowden John H brkmm
Bower Benj F foremn
Boyle Francis G plumber
Braasch Wm C carp
Brady Ralph A brkmm
Bramman Mrs Maria B (Bramman
& Brown)
Bramman & Brown (Mrs M B
Bramman F G Brown) hdw
Branch Elmer H firemn
Brandeman Chas farmer
Brandeman Henry farmer
Brandt Walter T eng
Bray Geo L eng
Bremer Theo H eng

FARMERS &
MERCHANTS

BANK

Secure your
Valuables from
Loss by Theft
or Fire.

SAFE DEPOSIT
BOXES \$2 to \$5
per year.

Capital and
Surplus \$750,000

244 E. MAIN

TEL. 224

UNION PLANING MILL

GENERAL MILL WORK
JOBING
HOUSE FINISH - OFFICE FIXTURES

SUTTER, Cor.
LAFAYETTE

STEPHAN VULCANIZING WORKS

AGTS. AJAX TIRES

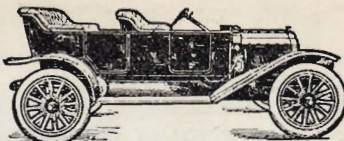
5000-Mile Guarantee. Expert Tire Repairing
125 E. MINER TEL. 239

EFES

GOODE & HUGHES REAL ESTATE

City and Country
Property
Fire, Life, and
Auto Ins.

Notaries Public
27 N. HUNTER
Tel. 225



238-40 N. EL DORADO

Campbell Auto Works

Repairing and Rebuilding Parts to Order
General Machine Work E. P. Campbell, Prop.
TEL. 866

346

POLK-HUSTED DIRECTORY CO'S

1913

Brentnall Arthur S switchmn
 Bridge Alex inspr
 Britton W Jos hostler
 Brockman Henry farmer
 Brockman Wm farmer
 Brockman Wm Jr farmer
 Bronaugh Byron B carp
 Brooks J J mach
 Brosche Stephen mach
 Brosso Benj H brkmm
 Brown Albert S eng
 Brown Frank G (Bramman & Brown)
 Brown G F brkmm
 Brown John W cond
 Brown Jos plumber
 Brown Minnie (wid John)
 Brown Philip D eng
 Brown R Hugh driver
 Bruhns John farmer
 Buck Albert O carp
 Buck Matthias A (Buck & Hall)
 Buck & Hall (M A Buck G W Hall) real est
 Budde Bernard A clk
 Budde Herman F clk
 Bunte J Benj bldg contr
 Burlingame Jas F blksmth
 Burns Edw signalmn
 Buschke Adolph G farmer
 Buschke Gustav A D harness
 Byrd Jas M brkmm
 Byrnes Margaret (wid Maurice)
 Byrnes M Jos brtnr
 Cabaniss John clk
 Caldwell Jas R carp
 Calhoun Jas C porter
 Cameron Wm A clk
 Campbell B W brkmm
 Campbell Danl plumber
 Canale Carlo gen mdse
 Canale Danl S clk
 Canale John H clk
 Candella Jos lab
 Cardwell John H saloon
 Cardwell John H Jr cond
 Carlson E Aug mgr C E Erickson & Co
 Carlson Fritz cementwkr
 Carter Andrew L mach
 Carter Fred S cond
 Caruso Alphonso car repr
 Cash John W cond
 Central Hotel (Chris Medinger)
 Ceo Michael restaurant
 Chamberlain Al brkmm
 Chrisman John
 Church Nelson firemn

Clarke Sidney S whsmn
 Clay Geo W lab
 Cleber Chas painter
 Clements Harry L eng
 Clendening Jas timekpr
 Clendening John rdmaster
 Clow Homer A lab
 Cochrane Richd R painter
 Cole Byron F eng inspr
 Cole Leon B firemn
 Colet Percy D sec Railway Club
 Collins John W H farmer
 Coman C D carp
 Cone Mrs Mabel F
 Connelly John inspr
 Connelly Patrick ranch foremn
 Conniff Martin tmstr
 Cook Harry S boilerwkr
 Cook Wilbur D (Hotel Western)
 Cooper Murdock clk
 Copeland Jas switchmn
 Corcoran Michael T police
 Corder Ray W brkmm
 Cornell Ray G P eng
 Costello E E batterymn
 Costello Patrick sec foremn
 Coughlan Jeremiah foremn
 Courte Jas W musician
 Covalt Clifford A firemn
 Cox Geo livery
 Crawford Mrs Edna M dom
 Crawford Jas M carp
 Crawford Leon lab
 Crews Walter L switchmn
 Crostiek Robt L foremn
 Cross Mrs Lydia J dry gds
 Crow Louis D farmer
 Crowder Bertha (wid H C) music tchr
 Cullen Peter lab
 Cureton P brkmm
 Curran Edw live stock
 Curtis Arthur A cond
 Cushman Paul R sealer
 Cusick Jas C clk
 Daley Hugh L firemn
 Dalton Wm E eng
 Damon Thos B tailor
 Daoust Felix E clk
 Datz Chas barber
 David Edw M whsmn
 Davis Chas F car bldr
 Davis Chas R brkmm
 Davis Corbin H carp
 Davis Edw U brkmm
 Davis Thos brtnr
 Davis Wm P firemn
 Day C G brkmm

You Can't Cover
 the World with a
 postage stamp, nor
 can you cover the
 City Directory
 BUYING PUBLIC without proper representation in your
 City Directory

W. J. Moran

FURNITURE CARPETS

THE STORE THAT SAVES YOU MONEY
410-18 E. MAIN ST. TEL. 2182

GRUNSKY- REAL ESTATE INSURANCE TEL. 113 DOHRMANN CO.

1913

COUNTY DIRECTORY

TRACY 347

Day Wm T farmer
Deacon Thos lab
Dean Olonzo F carp
Dean Sprott blksmith
Dearing Ira S cond
Deccicco Gaetano lab
Deccicco Peter mach
De Lamater Ellen (wid Geo)
De Lamater Jos caller
Denoti Henry eng
De Vega Jos clk
Devine Edw J cigars
Devine John H eng
De Vore G Ross firemn
Desa Antone car repr
De Santi Gaetano car repr
Dolan Alfred S signal ma'ntainer
Dolan Patrick H sec foremn
Donnell Edw J painter
Doody Edwin F clk
Doody John A switchmn
Friscoll Chas carp
Droge John C pres J C Droge Co
and Bank of Tracy
Droge J C Co J C Droge pres gen
mdse
Duffy Jas M brkmn
Duffy J H brkmn
Duffy Wm V firemn
Du Frame Wm H firemn
Dunbar Henry W lab
Dunnigan Harry B switchmn
Dunning Robt L cond
Du Ree Oscar F firemz
Dwelly Bros (M S and N S) garage
Dwelly Milton S (Dwelly Bros)
Dwelly Nelson S (Dwelly Bros)
Dyevocecich Nick (Western Res
taurant)
Eagan Harry eng
Eagan Jas farmer
Eagan Jas Jr eng
Eagan Thos F carp
Earl Edw poundmaster
Early Mrs Margaret
Eaton Edwin O eng
Eaton Fredk O switchmn
Eaton Orison E pumper
Ecord Andrew J brakmn
Edwards Chas B clk
Edwards Walter firemn
Eggers Lena (wid Peter)
Eggers Robt farmer
Ehrlich Albert clothing
Einfeldt John lab
Ekenberg Christopher C carp
Ekenberg Wm T carp
Elliott John lab

Enos Mamie clk
Erickson C E & Co E A Carlson
mgr shoe reprs
Eubanks N J brkmn
Evelich Marino lab
Ewald Henry lab
FABIAN-GRUNAUER CO Abra-
ham Grunauer Pres Louis Kroner
Sec Gen Mdse
Fabian Lawrence (F-G Co)
Faherty Jas J pumper
Fanning Henry D lab
Farley Frank C firemn
Farwell Jesse H switchmn
Fealy Edmund R pipeftr
Fernandez Alfred lab
Feudner Royal G brkmn
Finch Mrs Mary
Finney Arthur H firemn
First Presbyterian Church (Rev
Angus Matheson)
Fisher Geo H brkmn
Fisher Herbert lab
Fitzgerald Leo brtnrd
Fitzpatrick Jas lab
Fleaharty Bennett E inspr
Ford Quincy A inspr
Forden Allen cond
Foster E J lab
Fothergill Milner R men's furngs
Frailer Chas J (The Arlington) sa-
lloon
Francisco Antone E janitor
Frank Wm brtnrd
Franks Jos waiter
Franklin Beverley P switchmn
Freeman Wm J signalmn
Frerichs Bertha A asst Postmaster
Frerichs Edw A lab
FRERICHS GEO L Postmaster
Frerichs Henry A farmer
Frerichs Henry M barber
Frerichs Simeon J cond
Frerichs Wm inspr
Frerichs Wm J saloon
Frink Fred brtnrd
Fritz Irving inspr
Frost John H cond
Fuggitt Chas V brkmn
Fullenwider Wm C brkmn
Fuller Howard L firemn
Fuller J L brkmn
Gaines Thos A whsmn
Gannon Jas J cond
Garbec Geo lab
Garner Thos switchmn
Garrett Jesse A cond
Garrison Roy brkmn

A. L.
BRANCH
CO.

**C
O
A
L**

WOOD, HAY, FEED,
CEMENT, SAND,
GRAVEL

330 N. CALIF.
Phone 2454

Stockton
Sheet
Metal
Works

All Kinds of
Tin,
Copper,
AND
Galvanized
Iron Work

37
N. American St.

PHONE 354

327 E. WEBER AVE

TELEPHONE 535

**PHOTO
STOCKTON ENGRAVING COMPANY**

San Joaquin Valley Building & Loan Association

A. M. NOBLE, SEC.

LOANS MADE HOME BUILDERS ON INSTALLMENT PLAN

INTEREST ON SAVINGS DEPOSITS

15 S. HUNTER

STOCKTON

348

POLK-HUSTED DIRECTORY CO'S

1913

RIPON

SOUTH SAN
JOAQUIN

Lands

NONE BETTER

South & Smethers

LIFE, FIRE,
ACCIDENT, AUTO

Insurance

PHONE 17

RIPON

Light or Heavy

WAGONS AND BUGGIES

Made to Order

All Kinds of
Repair Work
and General
Blacksmithing

E. E. Tremain

634-40
E. MARKET
PHONE 1567

Garver Chas L barber
Geldson Theo cook
Gerbac Geo lab
Gerlach Danl H farmer
Gerlach Geo W farmer
Gerlach John C farmer
Gerlach Rudolph C farmer
Gerow Albert P firemn
Gibson Chas L eng
Gieseke Albert E clk
Gieseke Ernest livery and Con-
stable
Gieseke Ernest A lab
Gieseke Henry W E saloon
Gillen Leon S clk
Gillen Sophronia E (wid J H)
Gillespie Thos lab
Gischel Geo H clk
Glanville Emery firemn
Golden Wm farmer
Gomes Manuel F lab
Gonzales Jos E lab
Good Geo A mgr Good Lbr Co
Good Lumber Co G A Good mgr
Goodwin Wm H foremn
Goodwin Wm W plumber
Gould Chas W cond
Grakoo Peter clk
Gray Albert A btblk
Gregory Frank S eng
Griffiths Geo porter
Grisson Mrs Bertha L
Gross Wm towermn
Grubbs Chas W telg opr
Grummett Alfonso farmer
Grummett Alfonso Jr farmer
Grunauer Abraham pres F-G Co
Gunn Wm A brkmn
Gunther Albert clk
Guydice Wm G firemn
Hall Herman J switchmn
Hall Geo W (Buck & Hall) lawyer
Hall Zachariah R eng
Hamre Fred lab
Hammond Geo switchmn
Hand Nicholas lab
Hanneman Chas porter
Hannis Russell S surveyor
Hansen Bernard D firemn
Hanson Chris firemn
Hansen John P mnfrs agt
Harder Paul W farmer
Harelson G May bkpr
Harleson John B mgr C D Snow
Hart Chas tailor
Hatton Geo R brkmn
Hay Jas firemn
Heffren Robt M firemn
Heil Henry furn

Heinbockel Henry farmer
Heinbockel Nick lab
Henderson Walter brtnrd
Herndon W Edw firemn
Hess John shoemkr
Hewitt Lorren G eng
Hicks Harry L lab
Hicks Ray T bkpr
Hicks Thos J
Hickson Saml E eng
Higgins Jas
Hilken John F A farmer
Hill Walsh H clk
Hinkel Wm farmer
Hird Geo foremn
Hobson A H lab
Hoffman C Harry lab
Hogancamp Marion M eng
Hoger Peter baker
Hollenbeck Robt E lab
Hong Sing Laundry
Honsberger Otto C firemn
Horgan Geo F eng
Horton Elwood H inspr
Hotel Francis (J B Lassalle)
Hotel Western (W D Cook)
Housken Frank O lawyer
Howard Cornelius A farmer
Howard Ralph R brkmn
Huck Frenz W farmer
Hudson Alfred N painter
Hudson Chas E lab
Hudson Nelson bkpr
Huhs John J eng
Hull H Allen (Tracy Press)
Hunter Robt driver
Hurst Alva M
Hurst Wm A saloon
Hutchinson Chas M carp
Hutchinson Ira H barber
Hutchinson Orrin clk
Hutchinson Parks L clk
Ingram Danl C farmer
Ingram Danl W clk
Ingram Jas C farmer
Ingram Winfield S dep Marshal
Irvin Isaiah P lab
Irwin Arthur J clk
Irwin Claude L brkmn
Jacks Henry F clk
Jacks Wm C switchmn
Jackson Andrew F clk
Jackson Mrs Josephine
Jeffers Alvin M firemn
Jefford F H cond
Jenkins Lewis porter
Jennings Mrs Sarah E
Johnson Granlund
Johnson Jas bldg contr

HOTEL ROCKEFELLER

J. T. MITCHEN, PROP
HOT WATER -
PHONE 1034

STEAM HEAT -

STRICTLY MODERN
PHONE IN EVERY ROOM

232 E. MARKET AND 111 S. SAN JOAQUIN

CLAYES' NO-PERCENTAGE DRUG STORE.....

COR. MAIN
and HUNTER
Phone Main 921
Goods Delivered

1913 COUNTY DIRECTORY TRACY 349

Johnson Reuben plasterer
Johnson Walter N clk
Johnson Wm H farmer
Johnson Wilson B ranch foremn
Jones Arthur bkpr
Jones John W driver
Jordan E V brkmm
Judge Edw driver
Kadner Adolph L bkpr
Keer Wm H saloon
Keisow Benno E sealer
Kelley Jas J cigars
Kelley John F cond
Kennedy A switchmnn
Kidder J F clk
Killinger Frank R firemn
King Benj car sealer
King Geo elec
Kittleston Danl N mach
Kleber Chas painter
Knapp Richd C driver
Koch Henry clk
Kolb Adolph C hostler
Kolb Herman H boiler inspr
Kolb Otto A firemn
Krohn Johannes farmer
Kroner Louis sec F-G Co
Kuhn Rosa (wid Chas)
Kussmaul G Fred car inspr
Kuykendall Floyd brkmm
La Mar Edw gauger
Lamb Jas N soda mfr
Lamb Louis M firemn
Lamkey Wm L saloon
Lammers Dorathea (wid Diedrich)
Lancaster Mrs Mary
Langdon Chas W farmer
Lassalle John B (Hotel Francis)
Lasswell Wm H farmer
Lawton Chas H cond
Lea Oscar H firemn
Leal Geo firemn
Ledford Grover firemn
Ledgett Frank A firemn
Lee Mrs Cecelia boarding
Lee Earl W cond
Lee Francis E brkmm
Lee M E firemn
Lee Oliver E cond
Leeper Clair V checker
Leeper Raymond A clk
Lemkow Julius vaquero
Leonard Geo A farmer
Lester Henry C clk
Levin Max clk
Levoy Burton H brkmm
Lewick Andrew inspr
Lewis Frank painter

Lewis Grover W carp
Lewis Lindsay painter
Lewis Willard H painter
Lewis Wm F firemn
Lindon Lawrence A mgr S P Res-
taurant
Linne Adolph H farmer
Linne Henry farmer
Littlejohn Herbert E eng
Longwell Noah G cond
Looney Dennis J saloon and Jus-
tice of the Peace
Lorts Geo W switchmnn
Lozano Simon M barber
Luce Douglass
Ludiker H C brkmm
Ludwig Christopher C cond
Ludwig Edw M cigars
Ludwig Henry P saloon
Lugger Wm H J carp
Lynch Jos J mach
Lynch Patrick lab
McAllen Danl lab
McArdle Mary (wid Eugene)
McArthur Rev Robt L (M E)
McArdle Walter J blksmth
McCloskey Thos A switchmnn
McComb Frank P firemn
McCormick Frank C well driller
McCrory H A clk
McCrory Jas E brkmm
McDermott Barry G cond
McDonald A C lab
McDow Otis C clk
McEvoy W P brkmm
McFarland Chas R brkmm
McGee Amos W farmer
McHenry Chester L firemn
McIntyre Merton G brkmm
McKeany John O switchmnn
McLain Saml S barber
McMahon Frank foremn
McManus Jas W eng
McNamara Jas lab
McQuaid John D firemn
Mackel Edwin switchmnn
Madden Cassius D firemn
Mann Fredk mach
Manning Ralph E brkmm
Mark John lab
Markham A brkmm
Marlin Walter H firemn
Marsh Frank H switchmnn
Martin Mrs Emma clk
Matheson Rev Angus (First Pres-
byterian)
Mathews A firemn
Mathies Herman W eng

MEYER, MCGOWEN & CO.
REAL ESTATE INSURANCE
32 N. SUTTER ST.
PHONE 889

IF YOU READ THE
Stockton Daily Record
YOU GET THE NEWS

REO AUTOMOBILES
REO PACIFIC CO. OF S. F.
STOCKTON BRANCH, E. S. LOGAN, MGR.
246 N. EL DORADO ST.





M.
Delacruz
Coopersmith
AUTO
Radiator
AND
COOKING
UTENSIL
REPAIRING
20 N. Stanislaus
Tel. Stockton 1010

Artificial
Stone
Mfrs.

CEMENT
BUILDING
BLOCKS
COPINGS
STEPS
SEWER PIPE
TILE

Stockton
Artificial
Stone Co.

Cor. Grant and Main
 Streets

GRUNSKY **Real Estate**
Rentals **DIETRICH &** **Gen. Ins.**
Farm Lands **LEISTNER**
26 S. SAN JOAQUIN

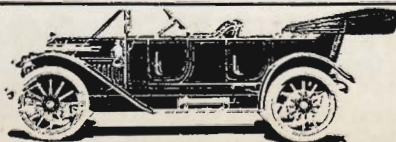
350

POLK-HUSTED DIRECTORY CO'S

1913

Maxey Merle J caller
 May Benj brkmm
 May Wm H barber
 Mayer Victor grocer
 Meason Edw caller
 Medinger Chris (Central Hotel)
 Melson Jas D lab
 Melson John P wiper
 Mendoza Thos F clk
 Menefee Alfred H firemn
 Mercer Eliza (wid Hugh)
 Mercer Walter L brkmm
 Mergenmeier Stephen washer
 Merkel Fred C agy W F & Co Exp
 Methodist Episcopal Church (Rev
 R L McArthur)
 Meyer Geo A brkmm
 Mihotovich Paul waiter
 Miller Carl L C grain buyer
 Millillo Frank lab
 Mingst Wm H saloon
 Miniaci Jos lab
 Misener Clyde A firemn
 Mitch F J clk
 Mitchell G Ira car repr
 Molen Chas E farmer
 Moller Chas firemn
 Moncovich John cook
 Monroe Berthol brkmm
 Moore Clarence H well borer
 Moore Fred eng
 Moore Fred S eng
 Moore Harvey W cond
 Moore T O agt S P Co
 Moran Rev T (Catholic)
 Morrison Murdock R brkmm
 Mueller Theo switchmnn
 Mulcahy Mary (wid Wm)
 Mullally Jas E draymnn
 Mullins Louis L telg opr
 Mullnix Frank lab
 Murrell Jas G phys
 Myers Jacob cond
 Nagaer Mrs Helen (The American)
 National Ice & Cold Storage Co
 J N Lamb agt
 Nay Raymond carp
 Naylor V Ray storekpr
 Nazor S J brkmm
 Neilson Hary R firemn
 Nelson John lab
 Nicholas Cicero V brkmm
 Nicholson J brkmm
 Nicolayson Nicholas H tailor
 Niedert Harry L mach
 Niedert Wm carp
 Niles Harvey B storekpr
 Nims Karl P clk
 Nissen Jacob B icemnn

Norwood Fred brtnr
 Novak Louis waiter
 Noyer Wm E firemn
 Obad Michaelotti waiter
 Obad Nick farmer
 Odell Emory A brtnr
 Oedekoven F Otto brtnr
 O'Laughlin Jesse A brkmm
 O'Neill Martin H cond
 Ordway Smith L hay
 Orewiler Mrs Eva A milliner
 Orewiler John W carp
 Orr Jessie tchr
 Ostermann Ernest C D W farmer
 Pac Tel & Tel Co West & Sons
 agts
 Parke Robt W cond
 Parker Adam farmer
 Parker Lewis farmer
 Parker Wm T clk
 Patten E V brkmm
 Patten Jos W brkmm
 Payne David R caller
 Pearson Nels lab
 Peerless Wm J lab
 Pendergast Harry barber
 Penny Frank expmnn
 Perrin Geo eng
 Peters Geo A brkmm
 Peters Manuel V lab
 Peterson Rosmun A eng
 Pettit Guy inspr
 Phillips Arthur J lab
 Phipps H Edw car inspr
 Pierson Geo H foremn
 Pierson Louis S lab
 Pinniger Sydney E D phys
 Plate Willard F carp
 Podesto John L eng
 Poole C Walter clk
 Pope Chas A brkmm
 Pope Elbert A firemn
 Pope Wm H farmer
 Pope W E brkmm
 Porter Thornton G lab
 Post Office G L Frerichs P M
 Poutre Katherine (wid A M)
 Powell Cecil switchmnn
 Powell G C clk
 Pruser Wm
 Pulliam Chas E foremn
 Pulliam Nannie S (wid A B)
 Quinn Timothy lab
 Rahls Elizabeth (wid T A)
 Rajcovich Geo (Western Restau-
 rant)
 Ralya Clyde barber
 Raymond Fred mach
 Recke Antonio lab



337 E LAFAYETTE

LEHMANN AUTO CO.

H. C. LEHMANN, PROP.
EXPERT AUTO REPAIRING
Agency WARREN MOTOR CARS



San Joaquin Valley Macaroni Factory

MACARONI--VERMICELLI--SPAGHETTI FANCY PASTE

Look For the Bear 13-15 W. MARKET F. VOLTOLINI PHONE MAIN 352

1913 COUNTY DIRECTORY TRACY 351

Reddington Chas H cond
 Reilton Edw C J eng
 Reke Frank lab
 Reke Tony lab
 Reynolds Frank T clk
 Rhoades H A lab
 Rice Norman J garage
 Rice Philip S brkmm
 Rich Wilburn A foremn
 Richichi Antonio lab
 Richter Paul (Wedler & Richter)
 Riecks Herman A farmer
 Rilea Mrs Mollie milliner
 Rilea Robt J
 Rinehart Elmer E brkmm
 Roach Benj C City Clerk
 Roat Frank W cond
 Roat Harry
 Robinson J R brkmm
 Rohde John H well borer
 Roland Herbert C roadmaster
 Rooney John firemn
 Root Orville H cashr Bank of
 Tracy
 Rosi Ublico lab
 Rosin Aug lab
 Rosin Chas E carp
 Ross Frank cashr
 Rounsfell Chas clk
 Rowley Fayette porter
 Rupt Wm clk
 Rustan Martin (Tarasch & Rus-
 tan)
 Ryan Victor F baggagemn
 Sachau Jos A dairymn
 Saddlemire Jesse C farmer
 Saddlemire Rufus farmer
 St Clair Mrs Maggie S nurse
 Salcido Elsie tchr
 Salcido Evelyn tel opr
 Salcido Muriel N stngr
 Sales Geo porter
 Sanders Mrs Lillie M
 Sange Puggue lab
 Sapp Michael lab
 Schlossman Wm farmer
 Schluter Chas A janitor
 Schluter Fred R lab
 Schluter Henry lab
 Schlutius Chas O firemn
 Schmidt Frank L brtnr
 Schmidt Fred M meats
 Schmidt Geo stockmn
 Schmidt Henry (Tracy Brewery)
 Schmidt Jacob bldg contr
 Schmidt Jesse S carp
 Schmidt John carp
 Schmidt Peter P farmer
 Schmidt Saml stockmn

Schmidt Wm v-pres Bank of Tracy
 Schnabel Ernest C driver
 Schroder Herbert eng
 Schu Robt A cond
 Schub Mathias carp
 Schultz Emil farmer
 Sears John P lab
 Sehrt Wilhelm farmer
 Selby Eugene firemn
 Selna Chas asst agt S P Co
 Service Henry switch tndr
 Sestrem Mrs Cora fur rms
 Sestrem Robt E saloon
 Sexton H Clay brtnr
 Shafer Peter switchmn
 Shaw Allen R eng
 Shaw Frances G clk
 Shaw Mrs Willa conf
 Shaw Wm T motorcycles
 Shealor Andrew J farmer
 Shealor Pearl tel opr
 Shelton Leon L cook
 Shepherd Chas H bridge tndr
 Sheppard Chas L cond
 Sherman Geo cond
 Shone Luther A switchmn
 Sibley Albert H eng
 Sierra & San Francisco Power Co
 Neil Tulloch mgr
 Sigelkof Carlton towermn
 Singleton Miles watchmn
 Skinner E cond
 Skinner Wm L
 Slavin Hyman N mach
 Small Sloman eng
 Smith Albert C pumper
 Smith Andrew H eng
 Smith Benj F caller
 Smith Claude R brkmm
 Smith David L farmer
 Smith Frank G boilermrk
 Smith Fred B eng
 Smith Geo W brkmm
 Smith Jas A mach
 Smith Orien C carriage trmr
 Smith Roy A brkmm
 Smith Roy M firemn
 Snow C D J B Harelson mgr meats
 Snow John gardener
 Soares Frank J brkmm
 Sommers Wm F clk
 Sorensen Chris cond
 Southern Pacific Co T O Moore agt
 S P Restaurant L A Lindon mgr
 Southwick Clough E messr
 Spencer Elbry D watchmn
 Sperry Franklin J switchmn
 Spitzke Frank lab

W. P. FULLER & CO.
 Manufacturers
 and Dealers in
**PIONEER WHITE LEAD
 PURE PREPARED PAINT
 AFRICAN RUBBER PAINT**
 Oils, Colors,
 Varnishes, Etc.
330-34 E. MARKET, STOCKTON

**FRANK
 NASON**
 CARPENTER AND
 CABINETMAKER
 FURNITURE
 made to order
 and Repaired.
 Screen Work.
 Saw Filing.
 Grinding.
 TEL 2770
 904 E. MARKET

SEE STOCKTON OIL BURNER CO.
 PEERLESS
 HEATING PLANTS FOR HOMES AND HOTEL AND RESTAURANT RANGES
 PUBLIC BUILDINGS
 Plants Kept in Repair Without Charge. SIX YEARS SUCCESS IN STOCKTON
 12 W. MAIN TELS. 1627 AND 2016

Phone 541

Wet Wash
IMPROVED

WET WASH

Smith & Kilmer, Props.
El Dorado Cor. Worth

Phone 541

HOTEL ARLINGTON

OUR DOLLAR ROOMS CAN'T BE BEAT
STEAM HEAT - PRIVATE FREE PHONE - HOT WATER - AIR SERVICE
SPECIAL RATES BY WEEK OR MONTH 30-32 S. SUTTER

352

POLK-HUSTED DIRECTORY CO'S

1913

Stark Lynn O asst cashr Bank of Tracy	Trimpler Walter F cond
Steece Norman W cond	Truchard Edw firemn
Stephens Ira O cond	Tschierschky Wm T baker
Steury Christian F firemn	Tulloch P Neil mgr S & S F P Co
Stevens C C carp	Turco Frank lab
Stevenson John H brkmm	Turner Edw firemn
Steward Edw porter	Turner Mrs Mae tchr
Stewart Guy U brkmm	Turner P T dentist
Stilwell Clarence A whsmn	Twisselmann Jacob H meat ctr
Stine J J firemn	Tyner Chas eng
Stirling L H foremn	Tyner Harry G printer
Stockton Implement Co F H West- lake mgr	Vandiver Clarence car inspr
Stone Benj E firemn	Van Ormer John D v-pres W S Bank
Stone Reuben W brkmm	Van Volkenburg Lillian musician
Stone Wm F brkmm	Van Volkenburg Wm pumper
Stotereau Henry	Vinton Michael cond
Stuart Thos W farmer	Violicich John waiter
Sullivan John T eng	Violicich Steve lab
Sullivan Lawrence farmer	Vogt Elmer J firemn
Sullivan Lawrence Jr clk	Vogt John D lab
Summers Wm lab	Vogt Leslie C messgr
Sundquist Chas H cashr W S Bank	Von Dack Leslie (Z Von Dack & Son)
Sutherland Archie clk	Von Dack Mrs Zoe (Z Von Dack & Son)
Sutherland Mrs Fay milliner	Von Dack Z & Son (Mrs Zoe and Leslie) jewelers
Sutherland John A switchmn	Vonderheide Richd nestler
Sutherland John W switchmn	Von Disson Frank L brtnr
Sutherland Lee E clk	Von Dohlen Henry farmer
Swanman Clarence farmer	Von Dohlen Henry A farmer
Swarthout Alfred L oil tester	Von Sosten John H bldg contr
Swinford Wm W firemn	Von Sosten Wm F farmer
Talbot E B cond	Vrooman Mrs Kate
Tarasch Edw (Tarasch & Rustan)	Waddle Melvin G livery
Tarasch & Rustan (Edw Tarasch Martin Rustan) restaurant	Waite Fred W brkmm
Taphorn Peter W farmer	Walker Herman O eng
Taylor J J ranch foremn	Walter Carl E conf
Taylor M E brkmm	Walter Geo O farmer
Terral Saml linemn	Wamsley Jos E eng
Terry Serphy switchmn	Warner Otto H brkmm
Thomas H John brkmm	Waters Mrs Pauline
Thomas John J brkmm	Watson Richd G inspr
Thomas Mrs Nan C mgr The Arlington	Wedge Frank L brkmm
Thompson Mrs Rosa dom	Wedler Rudolph (Wedler & Rich- ter)
Thompson Walter eng	Wedler & Richter (Rudolph Wed- ler Paul Richter) bakers
Thompson Walter W eng	Weiman Chas firemn
Todrasic Saml fruits	Welch David J eng
Tracy Brewery (Henry Schmidt)	Welch John W firemn
Tracy Lumber Co R D Whipple mgr	Wells Fargo & Co Exp F C Merkel agt
Tracy Press (H A Hull)	Wentworth C O telg opr
Tracy Railway Club P D Colet sec	West Edwin clk
Tracy Steam Laundry (C H Zim- merman)	West Jos S (West & Sons)
Traverse Wm J brkmm	West Paul A (West & Sons)
Traxler Fred C dairy	
Tremain Harry C brkmm	

You Can't Cover
the World with a
postage stamp, nor
can you cover the
City Directory . . .
BUYING PUBLIC without proper representation in your
City Directory . . .

PETERS-WOLF CO.
GENERAL INSURANCE 37-39 E. CHANNEL TEL. 32
STOCKTON

ISLAND TRANSPORTATION CO. STEAMER H. E. WRIGHT LAUNCHES - - BARGES - - TOWING

OFFICE PHONE 376 NIGHT PHONE 931
OFFICE AND WHARF, CENTER, COR. WEBER STOCKTON

1913 COUNTY DIRECTORY WOODBRIDGE 353

WEST SIDE BANK OF TRACY

Abraham Grunauer Pres J D
Van Ormer V-Pres C H Sund-
quist Cashr

West Warwick W (West & Sons)
West & Sons (J S, P O and W W)
stationers

Western Restaurant (Nick Dye-
voycecich Geo Rajcovich)

Western Union Telg Co T O Moore
agt

Westlake Frank H mgr Stkn Implt
Co

Westlake Leonard J drugs

Weston Wm P eng

Whelan John T tmstr

Whipple R D mgr Tracy Lbr Co

Whiteaker Jas M lab

Wild John mach

Wilkins Chas C clk

Wiley Albert E brkmm

Williams Albert firemn

Williams Earl D clk

Williams Edwin H plumber

Williams Jas G eng

Williams Hamilton firemn

Willig Jos car inspr

Willis Benj F

Willis Raymond B brkmm

Wilson Arthur M clk

Wilson Chas P switchmn

Wilson Harry W foremn

Winkle Loda C brkmm

Wise Saml brtnrd

Woolard Thos G telg opr

Wooten Ora P eng

Worden Wm clk

Wright Wm J lab

Wyatt Calvin R brkmm

Yates Adolphus M cond

Yaxley John H eng inspr

York Otto S cond

York Rollie A cond

Zimmerman Chas H (Tracy Stm
Lndy)

UNDINE

(See Stockton R F D 5 for names)

VERNALIS

Located on S P Ry 30½ miles
south of Stockton)

(For additional names see Tracy
and Banta)

Boltzen Chas lab

Brown Miles J farmer

Eggers Robt farmer

Eggers Wm farmer
Fake Geo J farmer
Gerlach Geo W farmer
Gordon Chas L farmer
Gordon Frank C farmer
Gordon Jesse J farmer
Henke Theo farmer
Holzer Maurice firemn
Horn John T sec foremn
Knudsen Louis eng
Koster Nick farmer
Koster Nick Jr farmer
Koster Wm farmer
Lyons Danl firemn
Mecklenburg Wm farmer
Messer Jurgen H farmer
Munsch Celes firemn
Murphy Thos gen mdse
Murphy Wm J mcht
Nicolaysen Frank farmer
Nicolaysen Fred W farmer
Nicolaysen Henry farmer
Nicolaysen Theo farmer
Ohm Henry T farmer
Ohm Johann farmer
Ohm Thos P farmer
Prather Benj F farmer
Riecks Carl F farmer
Schnabel Ernest lab
Seegers Otto C stockmn
Thoming Geo lab
Thoming Jacob farmer
Thoming John lab
Thoming Jorgen farmer
Walter Fred H farmer

VICTOR

(See Lodi R F D 1 for names)

WOODBIDGE

Located 2½ miles northwest of
Lodi

(For additional names see Lodi
R F D 2

Alloway Harry A farmer
Alloway Louis lab
Alloway Thos L
Alloway Wm lab
Arthur Saml R phys
Axtell Cary F lab
Bailey Wm J
Bancroft Geo lab
Bechthold Geo farmer
Beckman Geo V farmer
Blakesley Andrew L lab
Blakesley Obadiah F farmer

REAL ESTATE

That is My Specialty

What have you to sell?

What do you want to Buy?

J. H. UTT

22 S. Calif.
TEL. 860

Ask Your Grocer

FOR

Miller's BEST FLOUR

More Loaves
Better Bread

STOCKTON AUTO SUPPLY CO.

LEE TIRES ENSIGN'S OILS

PHONE 17 CHANNEL COR. SAN JOAQUIN STS.



Manufacturers
of the

Kryptok
Invisible
Bifocal



407

E. MAIN ST.
STOCKTON



STOCKTON

G
A
R
A
G
E

A. K. Jensen, Prop.

AUTO
REPAIRING

STORAGE,
SUPPLIES
419 E. CHANNEL
TEL. 1219

PHONE 67 39 N. SUTTER

DOOLITTLE & CO.
STOCKTON

LOANS
REAL ESTATE
INSURANCE

354

POLK-HUSTED DIRECTORY CO'S

1913

Blakesley Roy G
Boyce Amos J farmer
Boyce Chas F firemn
Boyce Chas I farmer
Boyce John farmer
Boyce Robt farmer
Brigham Asa M ranch foremn
Brown Geo R farmer
Covell Allen P (Rutledge Covell & Rutledge)
Covell Elbert A mgr Val Fruit Co
Davis John N tmstr
Devine John T tmstr
Doneaux Jule supt Woodbridge
Grape Tartar Co
Edson Frank W livery
Engel Jacob lab
Everts Chas N lab
Ficken John farmer
Freeman Chas A farmer
Freeman Ray farmer
Goldman Harry canal foremn
Graham Wm H lab
Grohe Henry blksmth
Henderson Jas P vineyardist
Hing Kee gen mdse
Howe Henry D carp
Hutchins Fredk phys
Hutchins L F lab
Hyde Olive A (wid G D)
Ingalls Oscar J farmer
Kingsbury Wm E lab
Kurtz Chas G lab
Kurtz Henry harnessmkr
Kurtz Jacob harnessmkr
Langhop Chas lab
Latouilpe Jos lab
Lee Shing indy
Leech Edw watchmn
Linbaugh Francis M ranch foremn
Lohr Rev Henry
Lucas Leon J farmer
McClelland Amos A
McClelland Geo D farmer
McMillan Jas W lab
Mackey Lucy B (wid J B)
Mason Eli F vineyardist
Meyers Benj S hotel
Miller Della M (wid R B)
Miller Jas R vineyardist
Miller Saml C lab
Mills Claude E farmer
Mills Freeman B vineyardist
Mills Ralph E lab
Myers Benj S N
Newman Oliver S chemist
NEWTON C L County Supervisor
4th Dist
Newton Douglas E contr

Pac Tel & Tel Co G Rutledge agt
Palmer Chas L lab
Palmer Jas W farmer
Perrin Alfred farmer
Perrott Frank farmer
Perrott Fred G dep Co Assessor
Pirotti Jas winemkr
Presbury Wm
Ray John tmstr
Reed Jonathan P farmer
Reinche Ludwig farmer
Ridley Jas vineyardist
Row G C blksmth
RUTLEDGE CHAS R (Rutledge Covell & Rutledge) P M
Rutledge Clarence clk
Rutledge Covell & Rutledge (C R and Geo Rutledge A P Covell) gen mdse
Rutledge Geo (Rutledge Covell & Rutledge) agt W F & Co Exp
Rutledge Mrs Myra
Solkmore John H tchr
Solkmore Margaret (wid J W)
Sollars Alfred J saloon
Sollinger Jas A vineyardist
Stevens Harry B lab
Tanner Chas H C farmer
Thomas Albert C carp
Thomas Frank L carp
Thompson Frank C farmer
Towne Burton A vineyardist
Turner Frank C barber
Valley Fruit Co E A Covell mgr
Washington Wm A lawyer
Withoit Rev John B
Wilkes T C canal supt
Wilson Martin L lab
Wilson Wm H farmer
Wisdom Clement C lab
Woodbridge Grape Tartar Co Jule Doneaux supt
Woods Blakeley R farmer
Woods Chas R farmer
Woods Chas W lab
Ye Lee Indy

WOODWARD

A post office on the Santa Fe Ry station name Orwood 15 miles west of Stockton.
(For additional names see Moorland)
Biancalana Albert farmer
Biancalana Antone farmer
Bierschwal Henry A agt Santa Fe System
Borden I L farmer

TEL. 411

MANTHEY
BROS.

420 N. CALIFORNIA

AWNINGS

FOR STORES AND RESIDENCES

TENTS AND CAMP FURNITURE

TENTS FOR RENT

W. J. Moran

FURNITURE CARPETS

THE STORE THAT SAVES YOU MONEY
410-18 E. MAIN ST. TEL. 2182

1913 COUNTY DIRECTORY WOODWARD 355

Broyles Wm C fishermn
 Bulger John farmer
 Burrell Chas S farmer
 Butters Wm fishermn
 Call Louis D dredgermn
 Calvert R D foremn Santa Fe
 Cantrell D farmer
 Cardoza M S farmer
 Carroll T fishermn
 Diller David F farmer
 Doiege Edw clk Santa Fe
 Edensen Wm fishermn
 Eller Wm fishermn
 Evers John dredgermn
 Fallman Frank A dredge supt
 Eederling Wm fishermn
 Fitzgerald R S farmer
 Geddes Wm H farm supt
 Giovanoni F farmer
 Grant John eng
 Gunn Jas E cannery foremn
 Hammond John fishermn
 Hammond Wm fishermn
 Healey Fred fishermn
 Hickmott Canning Co (Robt Hickmott)
 Hickmott Robt (Hickmott Canning Co)
 Jones Fillmore elec eng
 Jones Fremont eng
 Jones Philip eng
 Kircher Richd apiarist
 La Gouras E farmer
 Landy Jas capt dredger Albion
 La Prath Albert fishermn
 McAndrews Herbert eng

McCarty John C farmer
 Mayberry John S ranch foremn
 Medinas Andrew farmer
 Norton Gus dredgermn
 Nunes Jos farmer
 Oetzman E carp
 Pac Tel & Tel Co H W Ruess agt
 Phillips Geo H bridge tndr
 Postal Telg-Cable Co H A Bierschwal mgr
 Rhode Henry dredgermn
 Risser Granville R farmer
 Rodgers Frank P lab
 Rodgers Jos F farmer
 Rodgers Jos P lab
 Rodgers Manuel A F farmer
 Rodrigues Antonio farmer
 Rouse Elmer S bridge tndr
RUSS HERBERT W Mgr Woodward Island Co
 Santa Fe System H A Bierschwal agt
 Scholting Chas fishermn
 Scudero Chas bargemn
 Stone Jos A G eng
 Townsend Geo lab
 Underhill Chas lab
 Uribe Jose sec foremn
 Ward Albert L eng
 Wells Fargo & Co Express H A Bierschwal agt
 Williams Edw
 Williams Wilfred farmer
 Wolters Otto fishermn
 Woodward Island Co H W Ruess mgr
 Zulbert E farmer

Tel. 954

PIETRO MUZIO

BAKERY

Italian and French
Bread and Galetta
317 E. MARKET

MANTECA

GARAGE

Callander & Blake

AUTO

Repairing, Tires
and Supplies

"On the Highway"

MANTECA

An Advertisement

In This

—Is before the public of
your city EVERY DAY for

Directory

Twelve Months

Stockton Tool Works

C. JORY & SONS, Props.
TELEPHONE 2868

MANUFACTURERS OF FRESNO SCRAPERS MACHINE BLACKSMITHING

Agricultural Machinery Made and Repaired Punching, Shearing and Trip Hammer Work

AURORA STREET, N. E. CORNER LAFAYETTE