

Stockton Savings and Loan Society

Transacts a General Banking Business

Safe Deposit Boxes for Rent. Interest at 4% on Savings Deposits—Free of Taxes
Capital Stock Paid in, \$500,000.00 Reserve Fund \$125,000.00
New Bank Bldg. Stockton, Cal.

1909-10.

STOCKTON, LODI AND COUNTY—CLASSIFIED.

541

POLK-HUSTED DIRECTORY CO.'S

STOCKTON, LODI CITY AND SAN JOAQUIN COUNTY

Classified Business Directory

Names Appearing Under Headings Marked * Inserted Only
by Contract

ABATTOIRS.

Beach B R, n s French Camp
slough l e of French Camp
Turnpike.
Eichoff Wm, w s Sanguinetti
lane 1 n of Cherokee lane.
McCormick M Co, v s French
Camp Turnpike s of French
Camp slough.
Maisel J G, w s French Camp
Turnpike 1 s French Camp
slough.
Wagner Meat Co, s s Waterloo
rd 3 e of Cherokee lane.

LODI.

Guggolz C G, s s Mokelumne
river e of Cherokee lane.

ABSTRACTS OF TITLE.

(See also Searchers of Records)

Noble & Reid Title & Abstract
Co, 11 S Hunter.

**SAN JOAQUIN COUNTY TITLE
AND ABSTRACT CO,** 29 N
Hunter. (See right top lines.)

**WILHOIT ABSTRACT AND
TITLE CO (Inc),** 232 E Main.
(See left side lines.)

ACCOUNTANTS.

COOPER, TEMPLE & CO; Chi-
cago, First Natl Bank bldg;
Milwaukee, Wells bldg; St
Paul, Germania Life bldg;
Minneapolis, Lumber Exchange
bldg.

ADVERTISING AGENCIES.

DAWSON-WALL ADV CO, 26 S
California.

AGRICULTURAL IMPLEMENTS

Austin Bros, 546 E Main.
California Moline Plow Co, s s E
Main bet Sacramento and
Union.

Campbell Bros, E Main se cor
American.

Harris Manufacturing Co, 1243
E Park.

Holt Mngf Co, 325 S Aurora.
Houser & Haines Manufacur-
ing Co, Aurora cor Scotts av.

**PEERLESS CASH STORE, 312-
320 E Market.** (See left bot-
tom lines.)

Racine-Sattley Co, 320 E Market
**SAN JOAQUIN HARDWARE &
IMPLEMENT CO,** 25 N Hun-
ter.

SHAW H C COMPANY THE,
California se cor Weber av.
(See left top lines.)

Spalding Plow Co, 725 S Pilgrim
Stockton Implement Co, 25 S
California.

*AGRICULTURAL MACHINERY MANUFACTURERS.

JORY C & SONS, Aurora ne cor
Lafayette. (See right bottom
lines.)

SHAW H C COMPANY THE,
California se cor Weber av.
(See left top lines.)

E. F. WILLIAMS & CO.
DEALERS IN COAL, HAY, GRAIN AND MILL FEED
Telephone 177
128 North California

FANNING & COMPANY
REAL ESTATE AND LOANS
Farm Lands and City Property Bought, Sold and Exchanged
Agents for Mercantile Fire and Marine Insurance Company
Quartz Mines Bought and Sold (Estimates Made) Rooms 26-28 Clark and Henry Bldg.

H. McCOMAS--- Prescription Druggist

533 E. Main Phone 78

Manufacturer of Russian Corn Cure
Goods Delivered Free and Promptly

JACKSON & EARLE, (INC.)

Hardware, Stoves, Sporting Goods
Gas and Electric Fixtures—Windmills

MAIN, CORNER SUTTER

Dairy Supplies, Engines, Pumps, Wagons and Vehicles PLOWs, HARROWS, MOWERS, RAKES, ETC. The H. C. Shaw Co.

542

1909-10.
POLK-HUSTED DIRECTORY CO.'S

AIR VALVE MNFRS.

Senn-Smith Air Valve Co, 207
Elks' bldg.

APARTMENT HOUSES.

(See also Furnished Rooms.)

Temple Mrs Nettie, 444 E Miner
av.

APIARISTS.

Iselin Sebastian, n s Wood 2 e of
Harrison.

ARCHITECTS.

Brown E B, 525 Yosemite The-
ater bldg.

King Walter, 309 Elks' bldg.

Lake A E, 1838 E Washington.

ARCHITECTS AND OFFICE SUPPLIES.

**ARCHITECT & OFFICE SUP-
PLY CO,** 37 S California. (See
left top lines.)

ART GOODS.

Gage H J, 515 E Main.

Quan Yak & Co, 37 E Main.

Yamato Co, 616 E Main.

ARTESIAN WELLS.

See Well Borers.

*ARTIFICIAL STONE MANU- FACTURERS.

ABEL & GORDON, S Grant nr se
cor Main. (See left side
lines.)

STOCKTON ARTIFICIAL STONE
CO, Main se cor Grant. (See
left side lines.)

LODI.

**SAN JOAQUIN CONCRETE CON-
STRUCTION CO,** Lodi av ne
cor Main. (See right side
lines.)

ARTISTS.

Bloom A J, 730 E Main.

Cutting M S, 20 W Magnolia.

Lopez H M, 219 Locust.

LODI.

Mooney Mollie, n s Flora 1 e of
Stockton av.

ASSAYERS.

Smith R R, 39 N American.

*ATTORNEYS-AT-LAW.

(See also Lawyers.)

ASHLEY & NEUMILLER, 3-8
Hale's bldg 314 E Main.

FREITAS LAW T, 210 Savings
& Loan bldg. (See classified
Collections.)

STOCKTON COLLECTING CO,
222 E Main. (See left side
lines.)

WEBSTER & WEBSTER, 201-
204 Savings & Loan bldg.

AUCTIONEERS.

Gall J M, 113 S San Joaquin.

*AUTOMOBILE BROKERS.

CALIFORNIA AUTO GARAGE,
San Joaquin se cor Lafayette.
(See left side lines.)

STOCKTON GARAGE, 419 E
Channel. (See back cover.)

*AUTOMOBILE GARAGES. . .

CALIFORNIA AUTO GARAGE,
San Joaquin se cor Lafayette.
(See left side lines.)

STOCKTON GARAGE, 419 E
Channel. (See back cover.)

*AUTOMOBILE LIVERY.

CALIFORNIA AUTO GARAGE,
San Joaquin se cor Lafayette.
(See left side lines.)

STOCKTON GARAGE, 419 E
Channel. (See back cover.)

*AUTOMOBILE PAINTING.

CHARBONNEAU JOSEPH, 434
E Market. (See right side
lines.)

LYMAN L O, 501 N Hunter. (See
right side lines.)

PENFOLD J C, 118 N San Joa-
quin. (See left side lines.)



E. M. Ackley
OPTICIAN

-Glasses
OF ALL KINDS

Fitted
Made and
Repaired

OVER 20 YEARS
EXPERIENCE

ACKLEY

Optical Co.

509 E. Main
STOCKTON

Try Our Peerless Stock Food
FOR COWS AND HORSES

PEERLESS CASH STORE

312 to 320 E. Market Street

CLAYES' NO-PERCENTAGE DRUG STORE.....

COR. MAIN
and HUNTER
Phone Main 921
Goods Delivered

1909-10.

STOCKTON, LODI AND COUNTY—CLASSIFIED.

543

***AUTOMOBILE PARTS.**

CALIFORNIA AUTO GARAGE,
San Joaquin se cor Lafayette.
(See left side lines.)
STOCKTON GARAGE, 419 E
Channel. (See back cover.)

***AUTOMOBILE RENTING.**

CALIFORNIA AUTO GARAGE,
San Joaquin se cor Lafayette.
(See left side lines.)
STOCKTON GARAGE, 419 E
Channel. (See back cover.)

***AUTOMOBILE REPAIRS.**

CALIFORNIA AUTO GARAGE,
San Joaquin se cor Lafayette.
(See left side lines.)
STOCKTON GARAGE, 419 E
Channel. (See back cover.)

***AUTOMOBILE STORAGE.**

CALIFORNIA AUTO GARAGE,
San Joaquin se cor Lafayette.
(See left side lines.)
STOCKTON GARAGE, 419 E
Channel. (See back cover.)

***AUTOMOBILE SUPPLIES.**

CALIFORNIA AUTO GARAGE,
San Joaquin se cor Lafayette.
(See left side lines.)
STOCKTON GARAGE, 419 E
Channel. (See back cover.)

***AUTOMOBILE TIRES.**

CALIFORNIA AUTO GARAGE,
San Joaquin se cor Lafayette.
(See left side lines.)

***AUTOMOBILE TIRES—
REPAIRED.**

SPADE C L, 419 E Channel. (See
top edge.)

***AUTOMOBILE TRUCKS.**

STOCKTON GARAGE, 419 E
Channel. (See back cover.)

***AUTOMOBILES.**

CALIFORNIA AUTO GARAGE,
San Joaquin se cor Lafayette.
(See left side lines.)
STOCKTON GARAGE, 419 E
Channel. (See back cover.)
STUDEBAKER CO OF STOCK-
TON, 417-423 E Weber av. (See
back cover.)

***AUTOMOBILES, ACCESSORIES
AND SUPPLIES.**

CALIFORNIA AUTO GARAGE,
San Joaquin se cor Lafayette.
(See left side lines.)

AUTOMOBILES AND SUPPLIES.

Bonzi & Lusignan, 317 E Channel
CALIFORNIA AUTO GARAGE,
San Joaquin se cor Lafayette.
(See left side lines.)
Central Auto Co, 118 N San Joa-
quin.
Clifford J E, 248 N San Joaquin.
Hansel & Ortman, 418 E Market.
Salbach-Middlekauff Co, 17 E
Channel.
STOCKTON GARAGE, 419 E
Channel. (See back cover.)
STUDEBAKER CO OF STOCK-
TON, 417-423 E Weber av.
(See back cover.)

LODI.

Hamma & Riggs, Locust se cor
Sacramento.
Shaw A C, 13 W Pine.
Whyers' Garage, 24 W Elm.

AWNINGS AND TENTS.

See Tents and Awnings.

***BABIES' DRESSMAKERS.**

SCULLY MARIE A, 535 E Mc-
Cloud av. (See classified
Dressmakers.)

BAGS.

Ames Harris Neville Co (S F),
125 W Channel.

STOCKTON BOILER WORKS

PRACTICAL BOILER MAKER

W. McKARLEY
Proprietor
Phone Main 3051

Sheet Iron Worker. Repairing Promptly Done. New Boilers
Made to Order. Second-hand Boilers for Sale.
20 S. Commerce St., Between Main and Market Sts. Stockton, Cal.

PIANOS

MCNEIL & CO.

ELKS
BUILDING

PHONE 552

Electric and Machine Equipment Co.
Motors, Engines and Pumps. Housewiring and General Repairs
215 NORTH SAN JOAQUIN ST. STOCKTON, CAL.

Grand Central Hotel

RATES--\$1.00 per Day and Up

The Best Family Hotel
In Town

Cor. California and Channel Sts.

STANDARD
NEW HOME
DOMESTIC

Sewing
Machines
and Supplies



Parts and attach-
ments for all
machines, repair-
ing and renting
Round Belling All Sizes
Goods mailed on
receipt of price.

J. E. WOOD

1223
E. Weber Ave.

Phones 1546-2571

Clark & Henery Construction Co., Stockton, Cal.

BRIDGE AND WHARF BUILDERS

Phone Main 40

Clark & Henery Building

544

1909-10.
POLK-HUSTED DIRECTORY CO.'S

BAKERS AND CONFECTIONERS

(See also Confectioners, also
Cracker Manufacturers.)

Arriola Ifonso, 226 E Market.
AUBRY'S YOSEMITE GROCERY,
301-307 E Weber av. (See
p 56.)

Cowen P, Main sw cor Della.
Gail & Marchand, 1148 S Center
GERMAN-AMERICAN CONFECTIONERY AND BAKERY, 41
S California. (See left top
lines.)

Gravem-Inglis Baking Co, 347 N
Aurora, 209 E Channel, 112 S
Center and 404 E Miner av.

ITALIAN - FRENCH BAKERY,
111 S Hunter.

Joyce Alfred, 1004 E Oak.
Muzio Pietro, 111 S Hunter.
STURZENEGGER R A, 41 S
California. (See left top lines.)
Toft George, 15 S Pilgrim.

LODI.

Gatzert & Wedler, 20 W Pine.
Neubauer & Weber, 29 S Sacra-
mento.
Perry Agnes, 23 W Elm.
Richter Franz, 14 W Elm.
Tschierschky W T, Tracy.

*BAKING POWDER.

EMPIRE TEA STORE, 37 S San
Joaquin. (See left top lines.)

*BALUSTERS.

UNION PLANING MILL CO, 232
S Sutter. (See right side
lines.)

*BAND INSTRUMENTS.

See Musical Merchandise.

*BANDS AND ORCHESTRAS.

See Miscellaneous Information.

*BANK AND OFFICE FIXTURES

UNION PLANING MILL CO, 232
S Sutter. (See right side
lines.)

LODI.

LODI MILL & MNFG CO, Locust
sw cor Main. (See left bottom
lines.)

*BANKS AND BANKERS.

(See also Miscellaneous Informa-
tion.)

**FARMERS AND MERCHANTS
BANK OF STOCKTON CALI-
FORNIA,** 244 E Main. (See
left side lines and p 4.)

**STOCKTON SAVINGS AND
LOAN SOCIETY,** Main ne cor
San Joaquin. (See right top
lines and p 3.)

UNION SAFE DEPOSIT BANK,
30 N San Joaquin. (See back
cover and p 4.)

*BAR FIXTURES.

See Cabinetmakers.

BARBERS.

Amendola Bert, 38 S El Dorado.
Bell W M, 647 N Aurora.
Boehne F J, 41 N El Dorado.
Brecht Wm, 13 S San Joaquin.
Brewer O C, 232 E Taylor.
Capurro Frank, 16 E Main.
Carlile J W, 607 E Main.
Castro A M, 14 E Weber av.
Cencirulo M O, 26 E Main.
Cicinato Michael, 11 S Center.
Clark Chauncey, 531 E Weber av
Couturier N J, 130 N California.
Durschang Stanislaus, 642 E Main
Freitas A T, 530 E Main.
Freitas Manuel, 115 S Center.
Gagliardi Antonio, 206 E Market.
Gilbeau & Hough, 8 N California
Goodwine G P, 941 E Weber av.
Gregory F S, 244 E Market.
Hart J M, 433 E Main.
Hendrix J W, 9 N Sutter.
Herman V W, 207 E Weber av.
Isaac Louis, 114 N Hunter.
Keane J H, 914 E Main.
Kubota R, 22 N Center.
Laveau Louis, 727 E Main.
Le Cussan R J, 243 S California.
Logan J L, 30 S California.
Mattas Joseph, 237 S El Dorado.
Miyata G T, 20 E Washington.
Moore S R, 930 E Main.

Windows, Doors
Bank and Store

Fixtures
of Every
Description

Lodi Mill & Manufacturing Co.

Locust, S. W. corner Main

PHONE 834

LODI, CAL.

Description

PLAIN AND ORNAMENTAL GLASS.

TANKS
MOULDINGS
BRACKETS
and

Mill Work of
all Kinds

SAN JOAQUIN COUNTY TITLE AND ABSTRACT CO.

Abstracts, Real Estate, Insurance

29 NORTH HUNTER ST.

Telephone 318

1909-10.

STOCKTON, LODI AND COUNTY—CLASSIFIED.

545

Murphy & Brown, 442 E Main.
Nesbitt & Santos, 137 S California.

Okuda S, 40 E Weber av.
Oyama K, 119 S El Dorado.
Raber J L, 113 E Main.
Raffanti Fiore, 142 S El Dorado.
Rhodes T J, 37 N Center.
Rowley Joseph, 21 N Hunter.
Schaffner E C, 114 E Weber av.
Schon Michael, 39 N Hunter.
Silber Otto, 227 E Weber av.
Tanaka T, 113 S El Dorado.
Taormina Louis, 230 S Center.
Tenga K, 115 S El Dorado.
Vandewater A C, Main nw cor American.

Williams & Zignego, 10 N Sutter.
Wilson F A, 41 N American.

LODI.

Downen Joseph & Son, 17 S Sacramento.

Mirikidani K, 14 N Main.
Spaulding W I, Lodi Hotel.
Takiuchi G, 104 E Main.
Williamson & Hamilton, 23 N Sacramento.
Siegel Joseph, Clements.
Stemler C E, Clements.
Gillilan F M, Tracy.
McLain S S, Tracy.
May W H, Tracy.

BATHS.

(See also Barbers.)

Driscoll Mrs Lottie, 146 S California.
Osborn T J, 233 N California.
Stockton Hot Mineral Baths, S San Joaquin terminus both car lines.
Tokyo Furo, 32 E Washington.

BAZAARS.

Central Bazaar, 17 S California.
Charlton E P & Co, 422 E Main.
Hewitt Mrs A I, 9 N California.
Macomber A M, 711 E Main.

*BEER BOTTLERS.

See Bottlers.

*BICYCLE PARTS.

FISHER'S CYCLERY, 344 E Market. (See back cover.)

*BICYCLE REPAIRING.

FISHER'S CYCLERY, 344 E Market. (See back cover.)
HAZLET W R, 44-46 S California. (See left bottom lines.)

*BICYCLE SUNDRIES.

FISHER'S CYCLERY, 344 E Market. (See back cover.)
HAZLET W R, 44-46 S California. (See left bottom lines.)

*BICYCLE TIRES.

FISHER'S CYCLERY, 344 E Market. (See back cover.)
HAZLET W R, 44-46 S California. (See left bottom lines.)

*BICYCLES.

FISHER'S CYCLERY, 344 E Market. (See back cover.)
HAZLET W R, 44-46 S California. (See left bottom lines.)

Racycle

STORE, 44-46 S California.
(See left bottom lines.)

BICYCLES AND BICYCLE SUPPLIES.

Branch's (Inc), 309 E Weber av.
Brown Adolph, 210 E Market.
Brown S C, 139 S California.
Craver John, 733 E Main.
FISHER'S CYCLERY, 344 E Market. (See back cover.)
Lacey W B, 216 N Sutter.
Meyers H F W M, 109 S San Joaquin.

Racycle

THE EASY RUNNING
STORE, 44-46 S California.
(See left bottom lines.)

LODI.

Brown Adolph, 14 N School.
Hirasuna M, e s N Main 1 s of 10
Wauchope Bros, 113 N Sacramento.
Wright & Van Buskirk, 8 N School.



Phone 2635

NELATON
HEADACHE
POWDERS
GIVE
INSTANT
RELIEF

C. F. BERTHOLF

Druggist

44 Main Street

Free Delivery

PHONE
2797

Groceries.

CROSS-
PRICE
GROCERY CO.

Wholesale Mnfrs.

Pop Corn
Crisp

248

S. SAN JOAQUIN

Mill Work **W. A. YOUNG LUMBER CO.** Building

of all

Dealers in Lumber, Doors, Windows, Mouldings, Etc.

Materials

KINDS

S. E. Corner Stockton and Elm Sts., Lodi, Cal.

of every

PHONE 374

Description

California Auto Garage

Repairing and Storing A Specialty

New Fire-Proof Building

San Joaquin, S. E. Cor. Lafayette
Phone 810

JOSHUA HENDY IRON WORKS

75 FREMONT STREET, - SAN FRANCISCO, CAL.

MANUFACTURERS OF MACHINERY, BOILERS, ENGINES, ETC.

546

1909-10.

POLK-HUSTED DIRECTORY CO.'S

BILL POSTERS.

Stockton Bill Posting & Sign Co,
130 S Sutter.

BILLIARD AND POOL ROOMS.

Arcade Billiard Parlors, 37 S
Sutter.

BATES & PARKER, 29 S Sutter.
(See right side lines.)

**BRUNSWICK BILLIARD &
POOL PARLORS THE, 29 S
Sutter.** (See right side lines.)

Garibaldi Emanuele, 919 N East.
Heimann G H, 648 E Weber av.
Leduc U J, e s N East 1 s of Lin-
den rd.

Lugarelli Louis, 244 S Center.
McClellan F E, 519 E Lafayette.
Mattioli Octavio, 228 W Main.
Nelson W R, s s Waterloo rd 1 e
of N East.

Ra's R A, 231 S California.
Stanley J D, 905 E Market.

Stribley T R, 1 E Channel.
TREMAIN E E, 648 E Market.
(See left side lines.)

CHAS. H. BATES

GEO. PARKER

THE BRUNSWICK

BILLIARD & POOL PARLORS

29 S. SUTTER STREET

SOFT DRINKS
CIGARS

COME IN AND
REST YOUR FEET

Inouye Y, 30 E Washington.
Kanagawa F, 127 S El Dorado.
Oyama K, 119 S El Dorado.
Paras Costas, 24 S El Dorado.
Tanaka Y, 143 S El Dorado.
Tenga K, 115 S El Dorado.

LODI.

Asahi Co, 28 N Main.
Masui M, 14 N Main.
Smith N A, 11 S Sacramento.
Tatsukawa T, 28 N Main.

BISCUIT MANUFACTURERS.

(See also Bakers.)

American Biscuit Co, 131 Bridge.
Standard Biscuit Co, 322 E
Channel.

BLACKSMITHS.

(See also Horseshoers, also Car-
riage and Wagonmakers.)

Aaron C M, 626 N California.
Dietrich Theodore, 827 S Center.

**TRUSCOTT A & SON, 501 N
Hunter.** (See front cover and
p 5.)

LODI.

Gehan & Dart, 7 W Locust.
Gilbeau Frederick, 114 N School.
Hepper Bros, w s N Stockton 1 n
of Pine.

Lupton Wm, 223 N Sacramento.
Mellmann E H H, County rd nr
School.

Brash Bros, Banta.
Glenn J W, Clements.
Murphy Ernest, Clements.
Barkaw Albert, Ripon.
Goodwin E J, Ripon.
McArdle W J, Tracy.

BLUE PRINTERS.

**PACIFIC COAST PATENT
AGENCY (Inc), 201-204 Sav-
ings & Loan bldg.** (See back
cover.)

**COAL
WOOD
KINDLING**

**HAY
GRAIN
FEED**

**PINE
BLOCKS**

HONEST
WEIGHTS
AND
QUICK
DELIVERY

**ROWE
&
MCMAHON**

640 E. Weber Av.
Phone 136
WHOLESALE AND
RETAIL

BEWLEY, BIRD & CO. REAL ESTATE

LOANS - INSURANCE

Resident Agents: Insurance Co. of North America, Atlas Insurance Co., Ltd.
PHONE 471 ATWOOD BUILDING LODI, CAL.

Chas. H. Young, Mechanical Engineer

MACHINE DESIGNING, MOTIVE POWER MACHINERY, POWER PLANTS AND CONSTRUCTION WORK

SOLICITOR OF PATENTS
PHONE MAIN 2083 37 S. CALIFORNIA STREET, STOCKTON, CALIFORNIA

1909-10.

STOCKTON, LODI AND COUNTY—CLASSIFIED. 547

BOARDING HOUSES.

Slack Mrs M J, 118 S Sutter .
Walrad D M, 1009 N Sutter.

LODI.

Hattori R, 24 N Main.
Matsumoto M, 20 N Main.
Matteoni Attilio, Lockeford se
cor Pleasant av.
Tatsukawa T, 24 E Main.

BOAT BUILDERS.

(See also Ship Builders.)

California Navigation and Im-
provement Co, W Weber av
opp Commerce.
Grant John, Stockton Channel,
cor Lincoln.
Ingersoll G W, Lindsay and
Madison.
Jarvis D & Son, McCloud's lake
ft of W Lindsay.

STEPHENS BROS, ft of N Yo-
semite. (See left bottom lines.)

BOAT REPAIRING.

STEPHENS BROS, ft of N Yo-
semite. (See left bottom lines.)

BOILER MANUFACTURERS.

National Boiler Wks, 29 N Aurora
STOCKTON BOILER WORKS,
20 S Commerce. (See right
side lines.)

BOOKBINDERS.

RECORD PUBLISHING CO, 28
N California. (See opp p 320.)
Storm A R, Hansel bldg.

BOOKS AND STATIONERY.

CLOSE O H, 123 E Main.
Jossa C A, 327 E Main.
Lester-Graebe Art and Stationery
Co, 320 E Weber av.
Morris Bros, 20 N El Dorado.
Oya & Co, 32 E Washington.
Public Drug Co The, 336 E Mar-
ket.
Shimizu H & Co, 29 E Washing-
ton.
Stewart J A, 520 E Main.
Ward Frank, 125 S Center.

BOOTBLACKS.

Baker T R, 547 E Main.
Bertos Eddie, 10 N Sutter.
Buckingham Julius, 9 N Sutter.
Delucchi Lorenzo, 230 E Main.
Freeman John, 37 N Hunter.
Howard Oliver, 28 E Main.
McHenry George, 30 S California
Morris E S, 25 N Sacramento.
Rayner F J, 227 E Weber av.
Robinson Benjamin, 11 S Center.

BOOTS AND SHOES—RETAIL.

See Shoes.

BOTTLERS.

El Dorado Brewing Co, 626 N
American.
Rainier Bottling Works, 931 E
Lafayette.

LODI.

Lodi Soda Works, Sacramento se
cor Walnut.

BOWLING ALLEYS.

Tate P L, 911 E Main.

BOX MANUFACTURERS.

SUNSET DOOR & SASH CO, 17-
23 S El Dorado.

*BRACKETS.

LODI.

LODI MILL & MNFG CO, Locust
sw cor Main. (See left bottom
lines.)

BREWERS.

El Dorado Brewing Co, American
bet Oak and Park.
Pabst Brewing Co, 30 N Sutter.
Wunder Brewing Co, 127 E
Channel.

BREWERS' AGENTS.

Bertolani & Nassano, 25 W Mar-
ket.
Boschen H W, 30 N Sutter.
Simon Jacob & Co, 245 N Hunter
Tons J F & Sons, 931 E Lafayette
Williams W E & Co, 127 E Chan-
nel.



**E. N.
FESSIER**

**Contractor
and Builder**

**Cottage Building
Office and Store
Work**

Prompt Service a
Specialty. Satis-
faction Guaranteed

601 S California

Phone 324
AND

630 E. North

Phone 2208

Union Planing Mill Company
F. H. MARTIN, Mgr.
Plans and Specifications Drawn.
Contracts Taken on All Kinds of Building.
Estimates Furnished.
Cor. Sutter and Lafayette Sts.
STOCKTON, CAL.

Dogs Treated

Phone Main 1994

Dogs Boarded

VETERINARY HOSPITAL

T. L. DARDIS, D. V. S.

Veterinary Surgeon & Dentist

OPEN DAY AND NIGHT.

505 S. SUTTER ST., Stockton, Cal.

BAD BILLS COLLECTED

We handle all kinds of collections with dispatch.
Representatives all over the World.

Stockton Collecting Co., 222 E. MAIN ST.,
PHONE MAIN 1477

Irrigating Ditches

J. W. DOCKENDORFF
TELEPHONE MAIN 2232

Cement Work, Concrete Construction of all Kinds. Excavating,
Grading and General Contracting.

122 NORTH SUTTER

STOCKTON, CALIFORNIA

LANDS - LOANS - INSURANCE

GRUNSKY, DIETRICH & LEISTNER, 405 E. Main

548

1909-10.
POLK-HUSTED DIRECTORY CO.'S

BRICK MANUFACTURERS.

Carnegie Brick & Pottery Co, El Dorado ne cor Channel.
San Joaquin Brick Co, 39 S El Dorado.
Stockton Fire & Enamel Brick Co, w s of S P track nr Stkn Hot Mineral Baths.

*BRIDGE BUILDERS.

CLARK & HENERY CONSTRUCTION CO, Sutter ne cor Market. (See left top lines and p 6.)
DOCKENDORFF J W, 122 N Sutter. (See left side lines.)

*BRIDGE CONTRACTORS.

DOCKENDORFF J W, 122 N Sutter. (See left side lines.)

BROKERS.

O'Connor W E, 131 Bridge.
Paddock & Son, 6 W Weber av.

BROOM MANUFACTURERS.

Hemingway Bros, N East nw cor E Lindsay.

*BUILDERS.

FESSIER E N, 601 S California and 630 E Worth. (See right side lines and p 7.)
POWELL ROBERT, 945 E Lindsay. (See right bottom lines.)

*BUILDERS' HARDWARE.

JACKSON & EARLE (Inc), 348 E Main. (See left side lines.)
SHAW H C COMPANY THE, California se cor Weber av. (See left top lines.)

LODI.

YOUNG W A LUMBER CO, Stockton se cor Elm. (See right bottom lines.)

*BUILDING BLOCKS—CEMENT.

STOCKTON ARTIFICIAL STONE CO, Main se cor Grant. (See left side lines.)

LODI.

SAN JOAQUIN CONCRETE CONSTRUCTION CO, Lodi av ne cor Main. (See right side lines.)

BUILDING MATERIALS AND SUPPLIES.

CLARK & HENERY CONSTRUCTION CO, Sutter ne cor Market. (See left top lines and p 6.)

UNION PLANING MILL CO, 232 S Sutter. (See right side lines.)
Yolland & Co, El Dorado ne cor Channel.

LODI.

YOUNG W A LUMBER CO, Stockton se cor Elm. (See right bottom lines.)
TRACY LUMBER CO, Tracy. (See right side lines.)

*BUILDING PAPER.

LODI.

YOUNG W A LUMBER CO, Stockton se cor Elm. (See right bottom lines.)

BUILDING AND LOAN SOCIETIES.

San Joaquin Valley Building & Loan Assn, 11 S Hunter.

*BURGLAR AND FIRE ALARMS

JACKSON & EARLE (Inc), 348 E Main. (See left side lines.)

BUSINESS COLLEGES.

HEALD'S STOCKTON BUSINESS COLLEGE, 508 E Channel. (See backbone and opp p 196)

*BUSINESS SCHOOLS.

HEALD'S STOCKTON BUSINESS COLLEGE, 508 E Channel. (See backbone and opp p 196)

BUTCHERS.

See Meat Markets.

Res. Phone 86, **WOODSON**

Homes for you near Lodi, California. \$100 to \$150 net per acre from vineyards. We have them. Call and see us.

Res. Phone 889, **GARNER**

GARNER & WOODSON

Telephone Main 1201

15 South Sacramento

Central Drug Company PURE DRUGS

Telephone and they deliver to any part of the city
Telephone 2082 **40 South California Street**

1909-10.
STOCKTON, LODI AND COUNTY—CLASSIFIED. 549

BUTTER—WHOLESALE AND RETAIL.

ROYAL DAIRY, Market se cor Hunter. (See left side lines.)

CABINETMAKERS.

Mitscher H & Son, 448 N Aurora.
 Schneider Martin & Sons, 248 N Aurora.

*CANDY MANUFACTURERS.

ALPHA THE, 918-920 E Main. (See right side lines.)
PLATTE F T, 918-920 E Main. (See right side lines.)

CANNING COMPANIES.

California Fruit Cannery Assn, S Sacramento se cor Hazelton av.

*CARBONATED DRINKS—MNFRS.

McNEILLY BROS, 102 S Aurora. (See right bottom lines and Soda Mnfrs.)

MODEL SODA WORKS, 102 S Aurora. (See right bottom lines and Soda Mnfrs.)

*CARE OF PROPERTY.

LODI.

BEWLEY, BIRD & CO, 35 S Sacramento. (See left bottom lines.)

REALTY CO THE, 39 N Sacramento. (See opp p 450.)

*CARPENTERS AND BUILDERS

(See also Contractors—Carpenters.)

FESSIER E N, 601 S California and 630 E Worth. (See right side lines and p 7.)

CARPET CLEANERS.

Kemp & Heffernan, 330 S California.
 Manthey Bros, 420 N California.
 Pacific Carpet Cleaning Co, 330 S California.

CARRIAGE PAINTERS.

(See also Painters.)

CHARBONNEAU JOSEPH, 434 E Market. (See right side lines.)

LYMAN L O, 501 N Hunter. (See right side lines.)

PENFOLD J C, 118 N San Joaquin. (See left side lines.)
 Quivers Emanuel, 917 N East.
 Sickafosse & Sons, w s N East nr E Weber av.

TREMAIN E E, 648 E Market. (See left side lines.)

LODI.

Sovereign Seth, s s Locust 2 w of Sacramento.

CARRIAGE TRIMMERS.

Harris J W, 239 N Hunter.
TREMAIN E E, 648 E Market. (See left side lines.)

TRUSCOTT A & SON, 501 N Hunter. (See front cover and p 5.)

CARRIAGE AND WAGON MANUFACTURERS AND DEALERS.

Bink Anthony, E Miner av nw cor Sacramento.

Campbell Bros, E Main se cor American.

Curry W F, 941 E Lindsay.
 Garren & Grondona, 319 N Hunter.

Henderson M P & Son, 28 N American.

Johnston David, 442 S Center.
 Libbey C A, 941 E Lindsay.

PEERLESS CASH STORE, 312-320 E Market. (See left bottom lines.)

Phelan S F, 434 E Market.
 Racine-Sattley Co, 320 E Market

SHAW H C COMPANY THE, California se cor Weber av. (See left top lines.)

STUDEBAKER CO OF STOCKTON, 417-423 E Weber av. (See back cover.)

Sunset Carriage Factory, 227 N American.

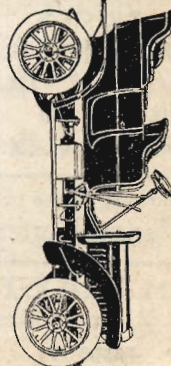
TREMAIN E E, 648 E Market. (See left side lines.)

TRUSCOTT A & SON, 501 N Hunter. (See front cover.)



J. Charbonneau
Carriage & Automobile PAINTING
 REAR OF STOCKTON CARRIAGE WORKS
 434-438 East Market Street
 Phone Main 2101

L. O. LYMAN
 Carriage and Automobile Painting
 501 N. HUNTER STREET
 Phone Main 1861. Stockton, Cal.



Stockton Tool Works

Manufacturers of Fresno Scrapers. Machine Blacksmithing, Agricultural Machinery made and repaired. Punching, Shearing and Trip Hammer Work.

J. JORY & SONS, Props.
 Aurora Street, N. E. Corner Lafayette. Telephone 2868

**We
Photograph
the
Records**

Searches Executed
with Dispatch

**Wilhoit
Abstract
and
Title Co.**
(Inc.)

**232
E. MAIN**
Phone 166

**ROYAL
DAIRY**

Dealers in
**Milk
Cream
Ice Cream
Water Ices**

PRICES
Milk . Quart, 5c.
Cream " 25c.
Ice Cream and
Water Ices, Qt. 25c.

Lowest Prices on
Fancy Butter

MARKET
S. E. cor. Hunter
Phone 211

J. P. MORRELL, Contractor and Builder

Prompt Attention Given All Work

Phone Main 1053 Estimates Furnished 929 N. Madison St., Stockton, Cal.

1909-10.

550

POLK-HUSTED DIRECTORY CO.'S

LODI.

Steady Wellington, e s S Main
3 s of Pine.

*CARRIAGE AND WAGON
PAINTERS.

LYMAN L O, 501 N Hunter.
(See right side lines.)

**TRUSCOTT A & SON, 501 N
Hunter.** (See front cover and
p 5.)

*CARRIAGES AND WAGONS.

**PEERLESS CASH STORE, 312-
320 E Market.** (See left bot-
tom lines.)

SHAW H C COMPANY THE,
California se cor Weber av.
(See left top lines.)

**STUDEBAKER CO OF STOCK-
TON, 417-423 E Weber av.**
(See back cover.)

CASH REGISTERS.

National Cash Register Co, 331
E Market.

CATERERS.

**GERMAN-AMERICAN CONFEC-
TIONERY AND BAKERY, 41
S California.** (See left top
lines.)

CAVEATS.

**PACIFIC COAST PATENT
AGENCY (Inc), 201-204 Sav-
ings & Loan bldg.** (See back
cover.)

*CEMENT.

(See also Lime, Plaster and
Cement.)

LODI.

YOUNG W A LUMBER CO,
Stockton se cor Elm. (See
right bottom lines.)

*CEMENT BUILDING BLOCKS.

**STOCKTON ARTIFICIAL STONE
CO, Main se cor Grant.** (See
left side lines.)

LODI.

**SAN JOAQUIN CONCRETE CON-
STRUCTION CO, Lodi av ne
cor Main.** (See right side
lines.)

*CEMENT CONTRACTORS.

**CLARK & HENRY CONSTRUC-
TION CO, Sutter ne cor Mar-
ket.** (See left top lines and
p 6.)

**DOCKENDORFF J W, 122 N
Sutter.** (See left side lines.)

CEREAL MANUFACTURERS.

Crawford O W, 12 Della.

CERTIFICATES OF TITLE.

**SAN JOAQUIN COUNTY TITLE
AND ABSTRACT CO, 29 N
Hunter.** (See right top lines.)

CHEMISTS.

See Druggists.

CHICORY MANUFACTURERS.

Backmann & Brandt, 404 E Mar-
ket.

CHINESE MERCHANDISE.

Bing Kee Co, 131 E Washington.
Lee Yuen & Co, 101 E Washing-
ton.

Lun Chong Co, 144 E Washing-
ton.

Man Chong & Co, 117 E Wash-
ington.

Sun Fook Chong, 147 E Wash-
ington.

Tuck Wo Co, 139 E Washington.
Yuen Hing, 109 E Washington.

CHIROPODISTS.

Gardiner J A, 1 Ruhl bldg.

CHRISTIAN SCIENCE.

Felt T D, 5 Ruhl bldg.

Gifford A J, 45 W Park.

CIGAR MANUFACTURERS.

Chun Chong & Co, 138 E Wash-
ington.

Lambert Charles, 201 E Weber av
Many Wong & Co, 638 E Main.

Quan On, 142 E Washington.

Ryckman George, 229 1/2 E Weber
av.

Coughlin George, Tracy.

CIGARS AND TOBACCO—
WHOLESALE.

Coblentz Mayer, 7 Gerlach bldg.

HERBERT E. WILLIAMSON

Money, Real Estate, Insurance and Notary

Phone 1486.

17 S. San Joaquin Street

A. V. WILBUR

A. M. BARNETT

Studebaker

Company of Stockton

Carriages, Wagons, Sprinklers, Harness, Robes,
Automobiles

417-423 EAST WEBER AVENUE, STOCKTON, CALIFORNIA

PHONE 124

OPP. ELKS' NEW BLDG.

LEWIS MOREING ——— Railroad Contractor

Estimates
given on

ALL CLASSES OF GRADING AND CONCRETE WORK

Telephone 326

ROOMS 6 and 7 SAN JOAQUIN VALLEY BANK BUILDING

1909-10.

STOCKTON, LODI AND COUNTY—CLASSIFIED.

551

GIANELLI JOE CO, Hunter sw
cor Market. (See front edge.)
Gunzendorfer F, 432 E Main.

CIGARS AND TOBACCO—
RETAIL.

ALPHA THE, 918-920 E Main.
(See right side lines.)

Arcade Cigar Stand, 37 S Sutter.
Blackburn W D, 448 E Main.
Brown P T, Oak nw cor El
Dorado.

Campbell David, 45 N El Dorado.
Capurro Frank, 16 E Main.

CROSS-PRICE GROCERY CO,
248 S San Joaquin. (See right
side lines.)

Fox Bros, 212 E Main.
Garrow F D, 339 E Main.

GIANELLI G B, 43 S Center.
(See right top lines.)

GIANELLI JOE CO, Hunter sw
cor Market. (See front edge.)

Gianelli & Hackett, 116 E Main.
Gorman G W, 945 E Weber av.

Gross W W, 234 E Main.
Gumpert Wm, 48 E Main.

Gunzendorfer F, 432 E Main.
Holland O J, 8 E Main.

Kane & Armacost, 36 E Main.
Kenning G E, 47 N Hunter.

McGhan M C, 31 S San Joaquin.
Mar Wing, 33 E Washington.

Meeker Bros, 16 S El Dorado.
Morris & Wilson, 37 S Sutter.

Murphy F J, 35 S California.

PLATTE F T, 918-920 E Main.
(See right side lines.)

Rodrick Charles, 22 E Weber av
Samuels Arthur, 347 E Main.

Sing Choy Cigar Co, 15 N Ameri-
can.

Smith J A, 310 E Market.
STOCKTON CRISP CO, 248 S
San Joaquin. (See right side
lines.)

Walton J S, 921 E Main.
Ward Frank, 125 S Center.

White & Jacobs, 226 E Main.
Wilson O C, 35 N Sutter.

Wong Co The, 241 S California.
Wong & Young Co, 118 S San
Joaquin.

LODI.

Perryman C E, 29 N Sacramento
Russell Bros, 21 N Sacramento.
Smith N A, 11 S Sacramento.
Ludwig E L, Tracy.

CIVIL ENGINEERS.

Broadhurst G W, 322 Elks' bldg.
Budd H B, 26 S Hunter.
Newell W H, 322 Elks' bldg.

CLAIRVOYANTS.

Haese Mrs May, 34 Clark & Hen-
ery bldg.
Sowles Mrs L E, 227 N California

*CLEANERS, DYERS AND SCOURERS.

(See also Dyers and Cleaners.)
GREENBERG & COHN, 916 E
Main. (See left bottom lines.)
UNITED TAILORS THE, 628 E
Main. (See left side lines.)

*CLEANERS AND DYERS.

GREENBERG JULIUS, 217 E
Weber av. (See adv.)

217 E. WEBER AVE., Next Door to Coffee Club, STOCKTON, CAL.

Suits Made to Order from \$18 Up

J. GREENBERG

...TAILOR...

*High Grade Cleaning, Dyeing, Pressing
and All Kinds of Repairing*

Goods Called For and Delivered

Phone 255

ROBERT POWELL CONTRACTOR & BUILDER

Phone Main 2547

Res. Phone Main 2250

Planing Mill, 945 E. Lindsay Street, Corner of Sacramento

POOL

URNS THAT
LONESOME
HOUR TO ONE
OF PLEASURE

Billiards

DRIVES AWAY
DULL CARE

The

Brunswick

Bates & Parker

Prop's.

Stockton's Finest
Billiard and Pool
Parlors

29 S. Sutter

A Good Place to
Rest or Pass a
Pleasant Hour

William B. Prahser

SHEET IRON, PUMP
and WINDMILL
WORK

PLUMBING

Well Boring and
General Jobbing

Phone Main 3032

642

S. CENTER ST.

Agent for

I. X. L. Windmills

**THE
UNITED
TAILORS**

**YOUR
CREDIT IS
GOOD.**

**SUITS
\$25.00 up**

Every Garment
Guaranteed

OUR SUITS REPAIRED AND
PRESSED **FREE**

628 E. MAIN
PHONE 524

Bell Theater High Class.. VAUDEVILLE

A FAMILY THEATER MAX MENDELSON, MNGR.

552 1909-10.
POLK-HUSTED DIRECTORY CO.'S

CLEANERS AND DYERS.
Continued.
**ROYAL CLEANING & DYEING
CO., 242 W Fremont.**
**UNITED TAILORS THE, 628 E
Main.** (See left side lines.)
***CLEANERS AND PRESSERS.**
BROWN IKE, 15 N Sutter. (See
front cover.)

CLOAKS AND SUITS.
Stockton Cloak & Suit House, E
Weber av ne cor Sutter.
***CLOTHING RENOVATORIES.**
**GREENBERG & COHN, 916 E
Main.** (See left bottom lines.)

CLOTHING—RETAIL.
Arndt M S & Co, 313 E Main.
Chase H D, 15 S California.
Dentoni Bros, 517 E Main.
Derr & Fiola, 50 S California.
Dresser The, 50 S California.
Hale Bros, 300 E Main.
I X L The, Main nw cor El Dor-
ado.
Isaacs Henry, 528 E Main.

LODI.
Elwert Max, 15 W Pine.
***COAL—WHOLESALE.**
**ROWE & McMAHON, 640 E
Weber av.** (See left side
lines.)
**WILLIAMS E F, 128 N Cali-
fornia.** (See right side lines.)
***COAL—RETAIL.**
(See also Fuel Dealers.)
**ROWE & McMAHON, 640 E
Weber av.** (See left side
lines.)
**WILLIAMS E F, 128 N Cali-
fornia.** (See right side lines.)
***COFFEES.**
**GIANELLI JOE CO, Hunter sw
cor Market.** (See front edge.)

COLLECTION AGENCIES..
California Merchants' Union, 39
S California.
**FREITAS COLLECTION AGEN-
CY, 210 Savings & Loan bldg.**
(See adv.)

C. BERYL FREITAS, Secretary

FREITAS' COLLECTION AGENCY

LAW T. FREITAS

ATTORNEY AND MANAGER

PHONE 14

**SUITE 210
SAVINGS AND LOAN BLDG.**

STOCKTON, CAL.

Jacobs Louis, 33 E Main.
Lewis & Johnson, 120 E Main.
Rosenbaum D S & Son, 400 E
Main.
Santini Alfred, 139 S El Dorado.
Simon B & Co, 643 E Main.
Steinhart Carl, Main nw cor El
Dorado.
Williams R T, 38 E Main.

STOCKTON COLLECTING CO,
222 E Main. (See left side
lines.)
***COLLECTIONS.**
**FREITAS COLLECTION AGEN-
CY, 210 Savings & Loan bldg.**
(See adv.)

**CARRIAGE
AND
WAGON
REPAIRS**

Wagons Built
to Order.

Rubber Tire Setting
a Specialty.

**E. E.
Tremain**

648
E. MARKET
Phone 1567

After you have looked into the merits of the Racycle you will
not be satisfied with a bicycle with a 20 year out-
of-date construction.

W. R. HAZLET 44-46 S. California St.
PHONE 154E

J. C. Beard Real Estate, Insurance LOANS

111 S. CALIFORNIA

1909-10.

STOCKTON, LODI AND COUNTY—CLASSIFIED.

553

HORNAGE GEORGE, 28 S California. (See right top lines.)
STOCKTON COLLECTING CO, 222 E Main. (See left side lines.)

*COLLEGES AND SCHOOLS.

HEALD'S STOCKTON BUSINESS COLLEGE, 508 E Channel. (See backbone and opp p 196.)

*COLUMNS—MONOLYTHIC MANUFACTURERS.

LODI.

SAN JOAQUIN CONCRETE CONSTRUCTION CO, Lodi av ne cor Main. (See right side lines.)

*COMMISSION MERCHANTS.
See Produce.

*CONCRETE CONSTRUCTION.

CLARK & HENRY CONSTRUCTION CO, Sutter ne cor Market. (See left top lines and p 6.)

CONFECTIONERS—WHOLESALE.

ALPHA THE, 918-920 E Main. (See right side lines.)
Eastman-Gibbens Co, 117 N California.

PLATTE F T, 918-920 E Main. (See right side lines.)

CONFECTIONERS—RETAIL.

ALPHA THE, 918-920 E Main. (See right side lines.)

Bru E J, 915 E Main.
Bushman F R, 127 1/2 S California
CROSS-PRICE GROCERY CO, 248 S San Joaquin. (See right side lines.)

Danver G M, 109 S San Joaquin.
Darcy Peter, 23 N Sutter.

GERMAN-AMERICAN CONFECTIONERY AND BAKERY, 41 S California. (See left top lines.)

Gorman G W, 943 E Weber av.
Harris C E, 120 E Weber av.

Herzinger T J, 129 N California.
Kawahara M, 31 1/2 E Washington
Markham F A, 216 E Main.
Moore A M, 236 W Market.
Morrill D B, 109 E Main.

PLATTE F T, 918-920 E Main. (See right side lines.)

Santos Frank, 338 E Weber av.
Sclally Patrick, 331 E Market.
Shun Getsudo Co, 103 E Washington.

STOCKTON CRISP CO, 248 S San Joaquin. (See right side lines.)

Wave The, 438 E Main.

LODI.

Ross F C, 15 N Sacramento.
Craig Bros, Tracy.
Levin Edward, Tracy.
West J S, Tracy.

*CONSTRUCTION ENGINEERS.

DOCKENDORFF J W, 122 N Sutter. (See left side lines.)

*CONSTRUCTION WORK—DESIGNING.

YOUNG C H, 37 S California. (See right top lines.)

CONTRACTORS—BRICK AND STONE.

Brown F E, 129 W Poplar.
Cowell A W, 1231 N Sutter.

DOCKENDORFF J W, 122 N Sutter. (See left side lines.)

Doyle M F, 30 E Worth.
Hanks & Mulcahy, 228 E Clay.
Rhonemus Elwood, 1648 S Grant
Sammerville George, 936 N Commerce.

CONTRACTORS—BRIDGE.

CLARK & HENRY CONSTRUCTION CO, Sutter ne cor Market. (See left top lines and p 6.)

DOCKENDORFF J W, 122 N Sutter. (See left side lines.)
Waite Herbert, 29 E Channel.

The Alpha

HOME MADE
ICE CREAM

"The Better Kind"

CONTAINS NO
ARTIFICIAL
COLOR OR
FLAVORING

GUARANTEED
TO CONFORM
WITH THE
PURE FOOD LAW

BANQUETS
SOCIALS
PICNICS

SUPPLIED ON
SHORT NOTICE

FREE DELIVERY
PHONE 818

918-920
E. MAIN

Tracy Lumber Co.

Lumber
Lime
Cement
Brick and
all kinds of
Building
Materials

Vineyards and Vineyard Lands

In the Famous Lodi District
The Home of the Flame Tokay Grapes

Income Vineyards on Easy Monthly Payments

For Particulars Address, The Underwood Tract Co. Box 48, Acampo, Cal.

Tracy, Cal.
Phone Main 211

DR. W. L. CALDWELL, DENTIST

Gateway Building, 111 S. San Joaquin

SUNDAYS
BY
APPOINTMENT

Hours
9 a. m. to 5 p. m.
and 7 to 8 p. m.

PHONE
2177

TEAS — COFFEES — SPICES — EXTRACTS.

"Taste Tells"

EMPIRE TEA STORE

PHONE MAIN 1487

Prompt Delivery.

37 S SAN JOAQUIN

554

1909-10.

POLK-HUSTED DIRECTORY CO.'S

**CONTRACTORS—CARPENTERS
AND BUILDERS.**

Allen J P, 329 N Grant.
Barling C A, 1103 S San Joaquin
**BEARD J C, s s Fair Oaks av nr
Fair Oaks school. (See right
top lines.)**

Brown N L, 1306 S San Joaquin.
Burns Daniel, 921 S California.
Chappell A M, 535 W Poplar.

**CLARK & HENERY CONSTRUC-
TION CO, 56-58-60 Clark &
Henery bldg. (See left top
lines and p 6.)**

Diel Goswin, 136 S Sierra Nevada
**DOCKENDORFF J W, 122 N
Sutter. (See left side lines.)**

Eichelberger C S, 948 E Channel
**FESSIER E N, 601 S California
and 630 E Worth. (See right
side lines and p 7.)**

Fukuoka Ya, 19 E Lafayette.
Gamahe F C, 1748 S Stanislaus.
Gibbs M H, 715 W Park.

Hall E E, 604 E Market.
Hoerl J F, 1128 S Stanislaus.
Jensen Andrew, 2225 N Cali-
fornia.

Lea H E, 220 S Sutter.
Le Mierux Thomas, 40 S Monroe.
Lewis T D, 1320 S San Joaquin.

Lewis & Barling, 245 S American
McCone J C, 904 S San Joaquin.
McLeod George, 631 Fisher.

Miller T A, 2037 E Hazelton av.
Morehouse H W, 225 W Fremont
**MORRELL J P, 929 N Madison.
(See left top lines.)**

Morrill G H, 1501 S American.
Noall & Towne, 923 N Lincoln.
Orton W F, 2031 N California.

Petzinger Caspar, 229 S Sutter.
**POWELL ROBERT, 945 E Lind-
say. (See right bottom lines.)**

Reibenstein R R, 409 E Rose.
Robbins T P, 637 E Sonora.
Snell W H, 905 N California.

Summerville George, 936 N Com-
merce.
Thoman Daniel, 121 S Stanislaus

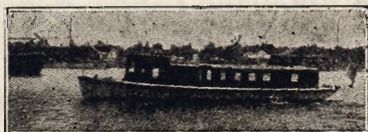
Williams C C, 419 E Miner av.
Woodruff Edgar, n s Maple 2 w
of N El Dorado.

LODI.

Barnes & Son, s s Eden 2 w of
Central av.

**Launches
Yachts
Row Boats**

**BUILT TO
ORDER**



Corbin W O, 226 S Sacramento.
Fuller W M, 224 N Cherokee.
Haslam & Hanson, w s Central
av 4 s of Tokay.

Hoag J P, s s E Pine 17 e of
Cherokee lane.
Perrin Bros, w s N Stockton 1 s
of Locust.

YOUNG W A LUMBER CO,
14 N Stockton. (See right
bottom lines.)

CONTRACTORS—CEMENT.

**CLARK & HENERY CONSTRUC-
TION CO, Sutter ne cor Mar-
ket. (See left top lines and
p 6.)**

**DOCKENDORFF J W, 122 N
Sutter. (See left side lines.)**

Douville L N, 420 S American.
Fuhrmann C M, 729 N Lincoln.
McAfee J A, 725 S Pilgrim.
McIntire F E, 130 S Eugene av.
Sanchez Maxie, 642 E Church.
Turner A J, 629 E Market.

LODI.

Beaty F J, s s E Lodi av 2 w of
Washington av.

**SAN JOAQUIN CONCRETE CON-
STRUCTION CO, Lodi av ne
cor Main. (See right side
lines.)**

***CONTRACTORS—CONCRETE
CONSTRUCTION.**

**CLARK & HENERY CONSTRUC-
TION CO, Sutter ne cor Mar-
ket. (See left top lines and
p 6.)**

**DOCKENDORFF J W, 122 N
Sutter. (See left side lines.)**

CONTRACTORS—DREDGING.

Empire Navigation Co, 301 Sav-
ings & Loan bldg.

***CONTRACTORS—ELECTRICAL**

**STOCKTON ELECTRICAL
WORKS, 312 N California.
(See front cover.)**

**Artificial
Stone
Mnfrs.**

**CEMENT
BUILDING
BLOCKS**

COPINGS

STEPS

SEWER PIPE

TILE

**Stockton
Artificial
Stone Co.**

Cor. Grant and Main
Streets

PHONE 3247

REPAIRING DONE

Stephens Bros.

BOAT BUILDERS
Foot of Yosemite St.

PHONE MAIN 645

G. B. GIANELLI DEALER IN

Groceries, Provisions, Wines, Liquors, Cigars and Tobacco

ALSO AGENT FOR ALL LEADING STEAMSHIP LINES

Nos. 45 and 47 Center St. Corner Market

1909-10.

STOCKTON, LODI AND COUNTY—CLASSIFIED. 555

CONTRACTORS—GENERAL.

BEARD J C, s s Fair Oaks av nr Fair Oaks school. (See right top lines.)

CLARK & HENERY CONSTRUCTION CO, Sutter ne cor Market. (See left top lines and p 6.)

DOCKENDORFF J W, 122 N Sutter. (See left side lines.)

FESSIER E N, 601 S California and 630 E Worth. (See right side lines and p 7.)

Moreing Bros, San Joaquin Valley Bank bldg.

Moreing Cyrus, 143 W Acacia.

MOREING LEWIS, 6 San Joaquin Valley Bank bldg. (See right top lines.)

MORRELL J P, 929 N Madison. (See left top lines.)

Munson A B, 840 N Van Buren.

POWELL ROBERT, 945 E Lindsay. (See right bottom lines.)

Richardson Construction Co, 36 S California.

Smith H H, 143 W Acacia.

Tucker F C, 321 N Sierra Nevada.

LODI.

Larsen A J, 11 W Elm.

Sakabe T N Co, 24 N Main.

CONTRACTORS—GRADING.

DOCKENDORFF J W, 122 N Sutter. (See left side lines.)

MOREING LEWIS, 6 San Joaquin Valley Bank bldg. (See right top lines.)

CONTRACTORS—LATHERS.

Guyon P A, 1122 S Sutter.

CONTRACTORS—PAVING.

CLARK & HENERY CONSTRUCTION CO, Sutter ne cor Market. (See left top lines and p 6.)

DOCKENDORFF J W, 122 N Sutter. (See left side lines.)

CONTRACTORS—PLASTERERS.

Belveal P O, n s Washington 1 e of Locust.

Blanchard Martin, 1045 N California.

DOCKENDORFF J W, 122 N Sutter. (See left side lines.)

GORDON E E, 1460 S Hunter. **Wheaton G B, 745 E Hazelton av.**

CONTRACTORS—RAILROAD.

MOREING LEWIS, 6 San Joaquin Valley Bank bldg. (See right top lines.)

CONTRACTORS—ROAD OILING.

Mosher Bros., 206 Elks' bldg.

CONTRACTORS—STREET.

Comfort C B, 146 W Flora.

Comfort W J, 1145 E Jefferson.

DOCKENDORFF J W, 122 N Sutter. (See left side lines.)

Haney L P, 208 Della.

Leonard John, 1127 S Commerce.

McMahan J C D, 328 E Lindsay.

CONTRACTORS—TEAMING.

Darrah C V, 537 E Lindsay.

COOPERS.

Addotti Paul, 17 E Lafayette.

*COPINGS—MANUFACTURERS.

STOCKTON ARTIFICIAL STONE CO, Main se cor Grant. (See left side lines.)

LODI.

SAN JOAQUIN CONCRETE CONSTRUCTION CO, Lodi av ne cor Main. (See right side lines.)

COPPERSMITHS.

Delacruz Manuel, 726 E Main.

Architectural Cement PRODUCTS

Art Stone
In Natural Shades
and Textures

WE PRODUCE
PRESSED STONE
In any special design

San Joaquin
Concrete
Construction
Co.

Lodi, Cal.

TERRAZZO WORK
Of All Kinds

S I G N S

Original
Designs
IN
Glass
Pictorial
and
Electric

T. C. STARR
41 N. American

Manufacturers and Wholesalers

Soda Water

Carbonated Drinks and

Seltzer Water

MODEL SODA WORKS

McNEILLY BROS., Props.

102 S. Aurora

Picnics, Banquets,
and Socials Supplied

Phone 2770

on Short Notice

The German-American Confectionery and Bakery

Wedding, Bride and Birthday Cakes, and all
kinds of Fancy Pastries

41 S. CALIFORNIA ST.

Phone 490

1909-10.

556

POLK-HUSTED DIRECTORY CO.'S

**Save for
the Rainy
Day**

**The Farmers
& Merchants
Bank**

will pay 4 per
cent interest
on your Sav-
ings

Capital and Surplus
\$625,000

Pres. P. B. Fraser

Vice-Pres.

D. S. Rosenbaum
Cashier
Jas. M. Abeel

Asst. Cash.
E. H. Smith

Phone 302

244 E. Main St.

**Auto and
Carriage**

PAINTER

Signs

Banners

Show Cards

Finest Work-
manship and
Best Prices
My Speciality



J.C. PENFOLD

118 N. San
Joaquin

PHONE 436

COPYRIGHTS.

**PACIFIC COAST PATENT
AGENCY (Inc)**, 201-204 Sav-
ings & Loan bldg. (See back
cover.)

**CORNUCOPIA MANUFACTUR-
ERS.**

Langdon W M, 924 E Main.

*COUNTERS.

**UNION PLANING MILL CO, 232
S Sutter.** (See right side lines.)

*CREAM.

**ROYAL DAIRY, Market se cor
Hunter.** (See left side lines.)

CREAMERIES.

**ROYAL DAIRY, Market se cor
Hunter.** (See left side lines.)

San Joaquin Creamery, 5 E Miner
av.

Stockton Creamery & Cheese Co,
815 E Weber av.

LODI.

San Joaquin Creamery, 9 S
School.

CROCKERY AND GLASSWARE.

**PEERLESS CASH STORE, 312-
320 E. Market.** (See left bot-
tom lines.)

Yost-Dohrmann Co, 417 E Main.

*CRUSHED ROCK.

LODI.

YOUNG W A LUMBER CO,
Stockton se cor Elm. (See
right bottom lines.)

CURIOS.

Fitz James, 833 E Main.

*CUTLERY.

**JACKSON & EARLE (Inc), 348
E Main.** (See left side lines.)

SHAW H C COMPANY THE,
California se cor Weber av.
(See left top lines.)

DAIRIES.

Adams Dairy The, 231 N Stanis-
laus.

Beck Alfred, w s Lower Sacra-
mento rd 5 n of E North.

Blane Charles, e s Walker's lane
2 s of Copperopolis rd.

Clowes Mrs Charlotte B, w s
West lane 1 n of Calaveras
river.

Garvey W F, 2602 E Main.

Henderson J A, 2202 E Church.

Kell T B, w of Old Upper Sacra-
mento rd n of Cherokee lane.

McCombs E J, w s N El Dorado
1 n of Linden.

Mazzera Louis, 1814 E Church.

Meister Alfred, n s Linden rd
17 e of N East.

Overhiser W H, n s Waterloo rd
9 e of Sutro av.

Pock G M, w s Mariposa rd 4 s of
Clark's lane.

Risso Mrs Mary, e s Lower Sacra-
mento rd 3 n of E North.

**ROYAL DAIRY, Market se cor
Hunter.** (See left side lines.)

Seliner Wm, rear 439 E North.

Smith & Turner, 902 S California.

Westmoreland Jeffery, e end of E
Weber av on n side.

Westmoreland S F, e end of E
Channel.

Williams F F, 825 N East.

Wilson Dairy Co, 231 S East.

Worden Mrs Leonora, 1536 S
Grant.

LODI.

Lattin Leon, rear 523 E Walnut.
Mettler Henry, 2d house on w s
of 1st lane off s s Lockeford rd
e of Victor Station.

*DAIRY SUPPLIES.

SHAW H C COMPANY THE,
California se cor Weber av.
(See left top lines.)

DANCING TEACHERS.

Casey F W, 129 E Lafayette.

Condit E Lois, 429 E Miner av.

**Fit and
Workmanship
Guaranteed.**

**GREENBERG & COHN
HIGH-CLASS LADIES TAILORS**

"OUR PRICES WILL PLEASE YOU."

Phone 842

**We Save You
Dollars
916 E. MAIN**

Stockton Savings and Loan Society

Transacts a General Banking Business

Safe Deposit Boxes for Rent. Interest at 4% on Savings Deposits—Free of Taxes
 Capital Stock Paid in, \$500,000.00 Reserve Fund \$125,000.00
 New Bank Bldg. Stockton, Cal.

1909-10.
 STOCKTON, LODI AND COUNTY—CLASSIFIED. 557

DECORATORS.
 See Painters.

DELICATESSEN.

AUBRY'S YOSEMITE GROCERY,
 301-307 E Weber av. (See
 p 56.)
 Bennett F L, 111 S California.

DENTISTS.

Burr R H, 314 E Main.
 Burton Frank, 20 Hale's bldg.
CALDWELL F M, Elks' bldg.
 (See bottom edge.)
CALDWELL W L, Gateway bldg.,
 111 S San Joaquin. (See left
 side lines.)
 Columbia Dental Parlors, 5 N
 Hunter.
 Cureton Edward, 306 Savings &
 Loan bldg.
 Duff H S, 218 Elks' bldg.
 Gilbert A J, 15 S Sutter.
 Glidden M D, 1 Baldwin bldg.
 Hall S H, 220 Elks' bldg.
 Haslehurst A O, 424 E Main.
 Henderson R W, 122 N Sutter.
 Henderson W R, 21 Union blk.
 Jones E L, 64 Physicians' bldg.
 Kertchem D J, 242 E Main.
 McCan F A Sr, 227 E Miner av.
 McCan F A, 218 Elks' bldg.
 Mallett Albert, 424 E Main.
 Minahan G E, 14 San Joaquin
 Valley Bank bldg.
 Wallace W G, 242 E Main.
 Wilcox W Cary, 5 N Hunter.
 Young H G, 548 S Hunter.

LODI.

Blodgett J M, Peirano bldg.
 Hines L B, National Bank bldg.
 Tennyson C B, Cary bldg.
 Williams E G, Cary bldg.
 Turner P T, Tracy.

DERMATOLOGISTS.

Gay Mrs F A, 24 S California.
 Gould Mrs L M, 420 N El Dorado.

*DESIGNING—MACHINERY.

YOUNG C H, 37 S California.
 (See right top lines.)

*DIRECTORY PUBLISHERS.

POLK-HUSTED DIRECTORY CO,
 906 Broadway, Oakland, Cal.

**DISTILLED WATER COM-
 PANIES.**

Pure Distilled Water Co, 722 W
 Park.

*DOORS AND WINDOWS.

UNION PLANING MILL CO, 232
 S Sutter. (See right side lines.)

LODI.

LODI MILL & MNFG CO, Locust
 sw cor Main. (See left bottom
 lines.)

YOUNG W A LUMBER CO,
 Stockton se cor Elm. (See
 right bottom lines.)

DRAFTSMEN.

**PACIFIC COAST PATENT
 AGENCY (Inc), 201-204 Sav-
 ings & Loan bldg. (See back
 cover.)**

*DRAYING.

SPERRY TRANSFER CO, 229
 E Weber av. (See classified
 Transfer Co.'s)

*DREDGE BUILDERS.

DOCKENDORFF J W, 122 N
 Sutter. (See left side lines.)

DREDGING COMPANIES.

California Reclamation Co, 27
 Hale's bldg.
 Standard American Dredging Co,
 27 Hale's bldg.

DRESSMAKERS.

Anderson Mrs E J, 535 E Channel
 Blackburn Mrs C A, 10 Gateway
 bldg.
 Brown Mrs Wahl, 306 Elks'
 bldg.
 Burch Pearl, 444 E Miner av.
 Cole Mrs Florence, 436 Monterey
 Dinubilo Rose, 343 S California.

E. F. WILLIAMS & CO.
DEALERS IN COAL, HAY, GRAIN AND MILL FEED
 Telephone 177 128 North California

FANNING & COMPANY
REAL ESTATE AND LOANS
 Farm Lands and City Property Bought, Sold and Exchanged
 Agents for Mercantile Fire and Marine Insurance Company
 Quartz Mines Bought and Sold (Estimates Made) Rooms 26-28 Clark and Henry Bldg.

H. McCOMAS---Prescription Druggist

533 E. Main Phone 78

Manufacturer of Benzoin Cream
 Goods Delivered Free and Promptly