

FALL GRADUATES

AH TYE, PERRY

Academic, J. V. football one year, varsity football two years, Block "S" secretary

ARATA, NICK

Academic, 3 1/2 years to graduate

BAKER, LEA

Commercial, 3 1/2 years to graduate

BOCCOLI, MARJORIE

Commercial, 11B vice-president, Tri-Arriba treasurer spring '45, vice-president Tri-Arriba fall '45, 12A secretary

BRITTON, PATRICIA

Academic, 11A president, Tri-Arriba president

BROOKS, MERLE

Vocational, 3 1/2 years to graduate

BRUECKNER, DENNIS

Vocational, 3 1/2 years to graduate

BURTON, JACKLYN

Academic, Tri-Ferese member, 3 1/2 years to graduate

CASTIGLIONE, DOLORES

Commercial, 3 1/2 years to graduate

CATES, RUTH

Academic, Tri-Ferese member, Student Control fall '45

CLAUSNITZER, IRENE

Academic, president Distributive Education Club fall '45

CLEMENSON, CORINNE

Commercial, 3 1/2 years to graduate

COFFELT, JACK

Vocational, Rally Committee fall '45

COLFELT, BETTY LOU

Commercial, Edison High paper editor, Troubadours fall '45

CRAWFORD, ELEANOR

Commercial, treasurer Tri-Ferese spring '45, fall '46, 3 1/2 years to graduate

CUMMINGS, HENRY

Vocational, Edison High minister of vocational affairs, secretary of Auto Electrics Club, Block "E" member, EHS Student Control, EHS football fall '45, EHS Bee track '45, football manager at EHS '42, '43

CUNDARI, ANGELO

Commercial, 3 1/2 years to graduate



Tom Aboud
Don Babcock
John Belessis
Merle Brooks
Ruth Cates
Barbara Clites

Perry Ah Tye
Lea Baker
Hellen Besotes
Jacklyn Burton
Jimmie Chan
Lillian Cloos

Nick Arata
Dorothy Barham
Marjorie Boccoli
Susan Caballero
Irene Clausnitzer
Jack Coffelt

Catherine Arent
Joe Barkett
Pat Britton
Dolores Castiglione
Corinne Clemenson
Betty Colfelt

FALL GRADUATES



DARBY, KENNETH

Academic, 3½ years to graduate

DEVERAUX, GAYLE

Academic, Navy, IIB president, C.S.F. member, 3½ years to graduate

DE VOL, RICHARD

Academic, 3½ years to graduate

DICKERSON, BOB

Academic, member of Rambler Hi-Y, Rally Committee, Troubadours

DINKEL, ROSALIE

Academic, orchestra, Stamp Club member

DOUGHTY, BARBARA

Commercial, member of Tri-Ferese, 3½ years to graduate

ELLIS, LLOYE

Academic, C.S.F. member, Junior Class secretary, Blue and White staff, Student Control, Press Club, German Club, Guard and Tackle reporter, 3 years to graduate

EVANS, BETTY

Commercial, Student Control '45

FERDMAN, LUCILLE

Academic, 3½ years to graduate

FLANINGAM, PAT

Commercial, Tri-Ferese member

FRANCO, RUDOLPH

Vocational, vice-president EHS Auto Electric Club

FREHN, JEROME

Academic, 3½ years to graduate

FRENCH, TOM

Academic, 3½ years to graduate

FROMBOLO, VAL LORA

Academic, president IIA Class, Guard and Tackle reporter, Blue and White staff '45

FROST, BILL

Academic, 3½ years to graduate

GARCIA, PAUL

Vocational, secretary and treasurer of EHS Auto Electric Club, 3½ years to graduate

GENETTI, ATHALIA

Academic, IIA Class secretary, Guard and Tackle reporter fall '44, spring '45

Eleanor Crawford
Richard De Vol
Lloye Ellis
Frank Fong
Val Frombolo
Paul Garcia

Henry Cummings
Bob Dickerson
Betty Evans
Rudolph Franko
Bill Frost
Rachel Garcia

Kenneth Darby
Rosalie Dinkel
Lucille Ferdman
Jerome Frehn
George Fujii
Barbara Garretson

Dennis Deed
Barbara Doughty
Pat Flaningam
Tom French
Betty Mae Gall
Florida Gascon

FALL GRADUATES

GERLOMAS, GEORGE

Vocational, president of EHS Key Club, president of Spartan Hi-Y, president of EHS Auto Shop, secretary of Block "E," football letterman at EHS, president of Auto Electric Club, C.S.F. two semesters, EHS Student Control

GESULGA, ROSE

Academic, Commercial, 3/2 years to graduate

GIANELLI, JACK

Academic, president of Rambler Hi-Y

GILLIS, FRED

Academic, 3/2 years to graduate

GRAVEM, BILL

Academic, 3 years to graduate

GRINER, JANET

Academic, Play Production

HAMLOW, BETTY

Academic, 3/2 years to graduate

HAMPTON, JODY

Vocational agriculture, president and vice-president of EHS student body, King EHS, secretary of EHS Key Club, president of 10A English Club, secretary, vice-president and president of Edison High F.F.A., 3/2 years to graduate

HARMS, NADINE

Commercial, C.S.F. three semesters, 11A Class secretary, voted Outstanding Senior

HARNER, IMA JUNE

Academic, 3/2 years to graduate

HEATH, JACK

Academic, varsity basketball, football, baseball letterman, Block "S" member, voted Outstanding Senior

HENDERSON, GRAHAM

Academic, Troubadours fall '45

HERRERA, ROBERT

Vocational, "B" track, varsity track, varsity baseball, J. V. football, member Block "E" Club

HOSKINS, BETTY JEAN

Academic, 3/2 years to graduate

HUEY, GEORGE

Academic, 3/2 years to graduate

IGO, DUDLEY

Academic, president of Press Club, associate editor of Guard and Tackle, C.S.F. member, Rally Committee, Blue and White staff, Gold Seal bearer, voted Outstanding Senior



Athalia Genetti
Fred Gillis
Jody Hampton
Jack Heath
Harriet Herrmann
Dudley Igo

George Gerlomes
Bob Greenberg
Jeanne Harmeling
Graham Henderson
Betty Jean Hoskins
Armenter Jones

Rose Gesulga
Janet Griner
Nadine Harms
Lila Lee Henney
Esther Hunt
Roland Jordan

Jack Gianelli
Betty Hamlow
Ima June Harner
Robert Herrera
Louise Hunt
Ruth Kingery



Tommy Kostas
Robert Loberg
Elouise McKee
Conrad Mar
Charlene Maxfield
Elizabeth Meyne

John Lawrence
Earl Loveday
Edwin Macon
Dorothy Markham
Betty Mazzera
Laura Miller

Doris Lee
Blanche McAlpin
Josephine Madrid
Edward Martin
Dorsey Meyer
Fernando Miramontes

Virginia Lee
Bill McFarland
Muriel Manning
Joanne Mattioli
Dorothy Meyerling
Gloria Mori

FALL GRADUATES

JEFFRY, BRAD

Academic, 3/2 years to graduate

JORDAN, ROLAND

Academic, C.S.F. member, Round Table Club member, golf team, 3/2 years to graduate

KANEKO, HARRY

Academic, 3/2 years to graduate

LAWRENCE, JOHN

Vocational, ad make-up Guard and Tackle

LEE, DORIS

Commercial, C.S.F. one semester, Student Control, 12A vice-president

LEE, VIRGINIA

Commercial, C.S.F. three semesters

LOBERG, ROBERT

Academic, 3/2 years to graduate

LOVEDAY, EARL

Vocational, 3/2 years to graduate

McALPIN, BLANCHE

Commercial, 3/2 years to graduate

McFARLAND, BILL

Academic, president of student body, Student Control, "B" basketball '43, '44, varsity basketball '45, '46, varsity baseball '44, '45, varsity football '43, '44, '45, voted Outstanding Senior

MACON, EDWIN

Vocational, EHS football, baseball, track

MAH, MUN

Academic, C.S.F. member four semesters, Round Table Club member, Chinese Club member

MAR, CONRAD

Academic, Confucius Club member, 3/2 years to graduate

MARKHAM, DOROTHY

Academic, 3/2 years to graduate

MARTIN, EDWARD

Vocational, Rally Committee, J. V. football

MAZZERA, BETTE

Academic, Guard and Tackle reporter, Play Production

MILLER, LAURA

Academic, 3/2 years to graduate

FALL GRADUATES

MIRAMONTES, FERNANDO

Academic, Rally Committee, yell leader fall '46, Troubadours, secretary-treasurer of Spartan Hi-Y Club, Student Control fall '45, Guard and Tackle reporter, voted Outstanding Senior

MORI, GLORIA

Academic, 3 1/2 years to graduate, Tri-Ferese member

NEWBERRY, LORLEI

Academic, High Steppers fall '42, spring '43, Tri-Arriba member, 3 1/2 years to graduate

NICKOLS, SHELDON

Academic, varsity football '44, '45, Block "S" member

OHM, PATSY

Academic, treasurer of Tri-Arriba

OWENS, BEVERLY

Academic, 3 1/2 years to graduate

PADDOCK, MARIANNE

Academic, Guard and Tackle columnist '44, '45, Tri-Arriba member, Press Club member

PARSONS, EDEL

Academic, C.S.F. member four semesters, Round Table Club member, 3 1/2 years to graduate

PIEPHORN, CLEO

Academic, 3 1/2 years to graduate

PRICE, VIRGINIA

Academic, 3 1/2 years to graduate

RAFETTO, CLAIR

Academic, J. V. football, varsity baseball

RASMUSSEN, DONALD

Vocational 3 1/2 years to graduate

REED, WILMER

Academic, C.S.F. member five semesters, 3 1/2 years to graduate

REVILLAR, ROSALINDA

Commercial, band one semester

RICKS, MARY

Academic, 3 1/2 years to graduate

RISSO, FRED

Commercial, 12A Class president, vice-president of Rambler Hi-Y Club spring '45, secretary fall '45

RITCHEY, BETTY JEAN

Academic, Tri-Arriba chaplain fall '45, spring '46

SALLAH, GABRIEL

Academic, 3 1/2 years to graduate



Barbara Multhauf
Pat Ohm
Cleo Piepcorn
Don Rasmussen
Fred Risso
John Rosek

Cora Munoz
Beverly Owens
Noreen Pogai
Wilmer Reed
Betty Jean Ritchey
Jeanette Saylor

Lorlie Newberry
Marianne Paddock
Virginia Price
Rosalinda Revillar
Gerald Roek
Marvin Schwoerer

Sheldon Nickols
Edsel Parsons
Clair Raffetto
Mary Ricks
Eddie Rose
Joe Senn



FALL GRADUATES

SENN, JOE

Academic, 3½ years to graduate

SENN, MARGARITE

Commercial, C.S.F. member two semesters, 3½ years to graduate

SILVA, JACQUELINE

Academic, 3½ years to graduate

SISTING, JOHN

Vocational, EHS football, basketball, track letterman, president of EHS Key Club, Honor "E" member

SNIDER, PAT

Academic, band two semesters, Tri-Arriba member

SORENSEN, REED

Academic, band seven semesters, 3½ years to graduate, voted Outstanding Senior

SPURGEON, LESLIE

Academic, president freshman class at El Cerrito High, vice-president sophomore class, EHS newspaper staff

STAUDENRAUS, BOB

Academic, Student Control, 3½ years to graduate

STEELE, STANLEY

Academic, 3½ years to graduate

THIEMAN, BOB

Academic, J. V. football, 3½ years to graduate

VAN SLYKE, BRUCE

Vocational, EHS student body vice-president, 3½ years to graduate

WALKER, LORETTA

Academic, Guard and Tackle columnist, Junior Class secretary

WALLIS, ROGER

Academic, 3½ years to graduate

WHITE, PATRICIA

Academic, Tri-Avante member, business manager of Guard and Tackle, editor of Guard and Tackle, C.S.F. six semesters, voted Outstanding Senior

WILLIAMS, ALICE

Commercial, 3½ years to graduate

WONG, ELWOOD

Academic, Block "S" member, C.S.F. member, yell leader, commissioner of records, commissioner of welfare, Student Control, Menzie-Gomas award, Rally Committee, football manager six semesters, Round Table Club member, voted Outstanding Senior

YANAGI, KAY

Commercial, 3½ years to graduate

Margarite Senn
Reed Sorensen
Stanley Steele
Marjorie Vincent
Artha Mae Wells
Elwood Wong

Jacqueline Silva
Mary Spino
Betty Strub
Mary Ann Vukich
Pat White
Kay Yanagi

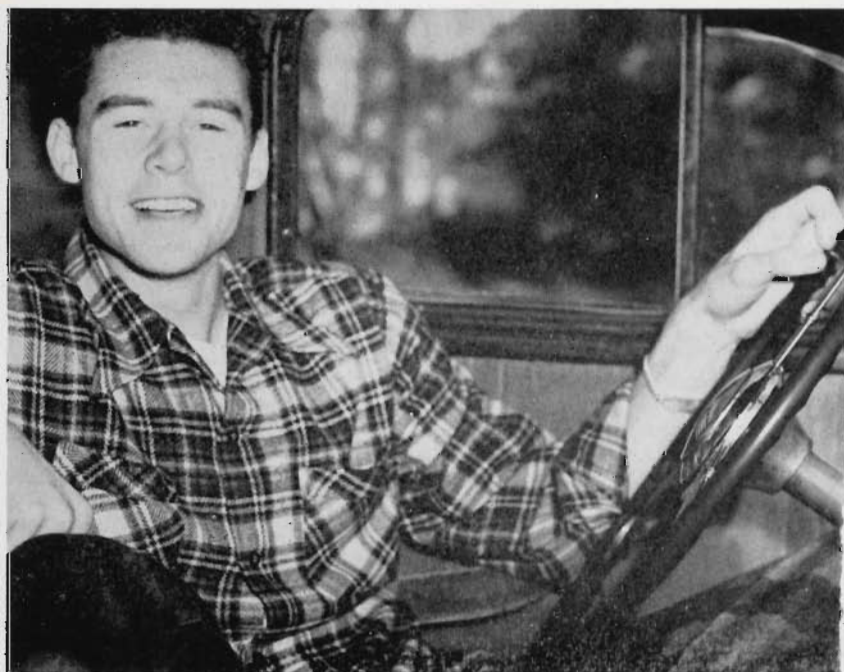
John Sisting
Leslie Spurgeon
Bob Thieman
Loretta Walker
Alice Williams

Pat Snider
Bob Staudenrause
Bruce Van Slyke
Roger Wallis
June Winstead

SPRING LEADERS

MARY RENARD

"The gal everyone knows" . . . Mary Renard . . . Custodian, fall '43 . . . Commissioner Records, fall '44 . . . Vice-president student body, fall '45 . . . song leader . . . Student Control . . . 'Gat' staff member . . . CSF . . . Round Table . . . Press Club . . . Tri-Avante . . . has that "Effervescent Smile"



DON STITES

Well-liked . . . spring student body president . . . Don Stites . . . basketball and football 'whiz' . . . Commissioner of Organizations, fall '45 . . . member Quad-C . . . Block 'S' . . . Round Table . . . extremely popular young fellow



DELBERT KING

Delbert King . . . varsity football manager and player . . . varsity and bee basketball . . . varsity track star . . . Commissioner of Athletics, spring '45 . . . Block 'S' . . . Round Table . . . Quad-C member . . . Merit Award . . . Student Control . . . Troubadours . . . pleasing personality

SUE BONNAR

Sue Bonnar . . . song leader . . . rally committee . . . Student Control . . . Girl's Jinx last spring . . . Girl's League Prexy, fall '45 . . . Vice-president student body . . . Round Table . . . active participant in school activities . . . has that "school spirit"

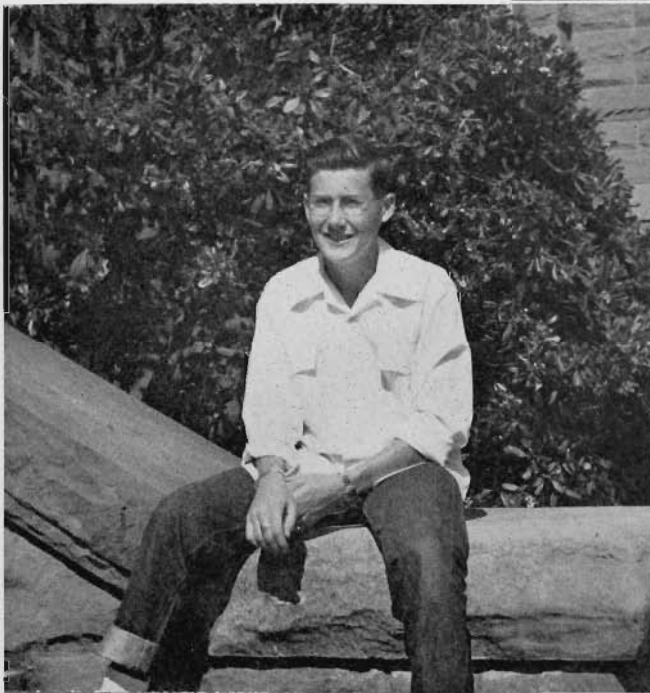


BRUCE BECKER

Bruce Becker . . . life member CSF . . . associate editor and reporter 'Gat', spring '45 . . . member Advisory Board, Student Life Magazine . . . successful, well-liked student . . . with high hopes and ambitions

SHIRLEY ARTHUR

Wonderful gal . . . outstanding music student . . . IIA vice-president . . . Student Control . . . Rally Committee . . . CSF three semesters . . . Troubadours' accompanist five semesters . . . sang one semester . . . Tri Avante . . . Round Table . . . a credit . . . and pride . . . to SHS . . . Shirley Arthur



CARNEY CAMPION

Active in school affairs . . . Custodian and Commissioner of Organizations . . . Student Control . . . Rally Committee . . . Sports Editor . . . Press Club . . . Round Table Prexy . . . Hi-Y clubs . . . photographer for annual and 'Gat' . . . pleasant fellow . . . need we say more?

MARIAN SIMPSON

Marian Simpson . . . Editor of Blue and White . . . Guard and Tackle reporter one semester . . . Press Club and Round Table executive . . . Tri-Avante . . . Student Control . . . highly active in student affairs



SPRING GRADUATES



Grace Adams
Bette Almeida
Shirley Arthur
Paul Barnetch
Bruce Becker
Carol Benelisha

Yvonne Alexander
Marian Ariff
Fred Aulwurm
Ann Barrows
Lynn Behrens
Wilma Benton

Larry Alldredge
Gladys Armanino
Richard Aulwurm
Barbara Bauman
Dee Dee Belinfante
Eleanor Biggs

Jacqueline Allen
Rudolph Arnaiz
Ellen Baker
Kenneth Beal
Lorraine Bell
Nona Bissell

ANDERSON, CARROLL
Academic, Golf Club, J. V. basketball, Block 'S'

ARNAIZ, RUDOLPH
Academic, C.S.F. three semesters, Bulldog Hi-Y member

ARTHUR, SHIRLEY
Academic, IIA vice-president, C.S.F. three semesters, Student Control, Troubadour accompanist five semesters, Tri-Avante member, Round Table Club, Rally Committee, voted Outstanding Senior

AULWURM, FRED
Academic, band four semesters

AULWURM, RICHARD
Academic, C.S.F. member seven semesters, Round Table Club, Stamp Club

BARNETCHE, PAUL
Commercial, C. S. F. seven semesters, Troubadours

BAUMAN, BARBARA
Academic, Troubadours, Rally Committee

BECKER, BRUCE
Academic, C.S.F. seven semesters, associate editor Guard and Tackle spring '45, advisory board member of Student Life Magazine, voted Outstanding Senior

BEHRENS, LYNN
Academic, C.S.F. member two semesters, Round Table Club, Tri-Ferese member

BELINFANTE, DEE DEE
Academic, C.S.F. two semesters, business manager of Guard and Tackle, Blue and White staff, EHS newspaper columnist

BENELISHA, CAROL
Academic, Guard and Tackle columnist

BISSELL, NONA
Academic, secretary C. S. F., Round Table Club vice-president, Student Control, commissioner of records, band seven semesters, IIA Class president, Rally Committee, Tri-Avante member, Guard and Tackle columnist, chosen Queen of Stockton High spring '46

BLAIR, BOB
Academic, Round Table member

BONFOEY, BILL
Vocational, 3 years to graduate

BROOKS, LETTY
Academic, Guard and Tackle columnist, Tri-Avante member

SPRING GRADUATES

BONNAR, SUE

Academic, vice-president of student body, Student Council two semesters, Student Control, Round Table Club, Girls' League president, song leader, Rally Committee, voted Outstanding Senior

BROIN, JOHN

Academic, J. V. football

BROWNING, PAULA

Academic, 3 1/2 years to graduate

BUSALACCHI, FLORENCE

Commercial, Student Control, orchestra

BUTTS, DOROTHY

Commercial, 3 1/2 years to graduate

CALCAGNO, RAY

Academic, commissioner of welfare, Student Control, band

CAMPION, CARNEY

Academic, custodian, commissioner of organizations, Student Control, chairman Rally Committee, vice-president of Press Club, president and secretary of Round Table Club, photographer for Blue and White and Guard and Tackle, sports editor of Guard and Tackle, secretary Trojan Hi-Y Club, Quad-C Club member, voted Outstanding Senior

CARLOCK, MARY

Academic, 3 1/2 years to graduate

CARPENTER, MARY

Commercial, band

CARVER, GILBERT

Academic, C.S.F. member one semester, letterman in track and football

CHAMPION, SHIRLEY

Academic, 3 1/2 years to graduate

CHO, CHUNG

Academic, C.S.F. six semesters, 3 1/2 years to graduate

CLAIR, TED

Academic, C.S.F. member, 3 1/2 years to graduate

CLARK, MARILYN

Academic, C.S.F. member, Guard and Tackle columnist, Tri-Arriba member, 3 1/2 years to graduate

COATS, JANE

Academic, Troubadours

COMER, EDWIN

Academic, Round Table Club



Richard Blacow
Sue Bonnar
Carlyle Broderick
Priscilla Brown
Ray Calcagno
Mary Carpenter

Bob Blair
Myla Bradford
John Broin
Paula Browning
Carney Campion
Gilbert Carver

Betty Bonds
Arlene Braunberger
Letty Brooks
Florence Busalacchi
Lail Carde
Angelina Castellanos

Bill Bonfoey
Elsie Brister
Kenneth Brown
Dorothy Butts
Sylvia Carmean
Mary Casula

SPRING GRADUATES



Jeannie Cattrone
Anna Christensen
Betty Cline
Clinton Cook
Donald Curnow
Louise Demichelli

Joe Cocchini
Ted Clair
Jane Coats
Larcene Cooper
Winfield Curry
Betty Lou Dennis

Shirley Champion
Marilyn Clark
Edwin Comer
Frank Copp
Mary Lou Daniels
Arlene De Shazer

Chung Cho
Robert Clark
Lenora Conner
Robert Croce
Dorothy Del Rio
Rodney Detrick

- COPP, FRANK**
Academic, 3/2 years to graduate
- CROCE, ROBERT**
Academic, varsity football, Block 'S'
- CURRY, WINFIELD**
Academic, C.S.F. one semester
- DANIELS, MARY LOU**
Academic, Troubadours
- DETRICK, RODNEY**
Academic, Student Control, Block 'S', varsity basketball
- DEMICHELLI, LOUISE**
Commercial
- DENNIS, BETTY LOU**
Academic
- DE SHAZER, ARLENE**
Commercial
- DEVENCENZI, SUSAN**
Commercial
- DOI, GEORGE**
Academic, 3/2 years to graduate
- DRIGGS, BARBARA**
Academic, Tri-Arriba treasurer, Play Production
- ELIAS, TRINIE**
Commercial
- ENSIGN, JAMES**
Academic
- EVANS, BILL**
Academic
- EGE, GILBERT**
Vocational, 3 years to graduate
- FAIRLESS, BOB**
Academic, J. V. football, track
- FLODIN, AL**
Academic, member Modesto ice hockey team
- FORD, MARY ANN**
Academic, German Club, 3/2 years to graduate
- FIGONE, LEE**
Commercial
- FITZSIMMONS, JEAN**
Academic, C.S.F. member
- FLEMING, DARRELL**
Academic
- FOSTER, LA VERNE**
Academic, Tri-Ferese member
- FRANKS, JACK**
Academic, C.S.F. member
- FUKUSHIMA, ISAO**
Academic

SPRING GRADUATES

FORD, OZEER

Academic, varsity football

FORNACIARI, ROSALIE

Academic, Play Production

FRANZONE, RAYMOND

Vocational, vice-president
Spartan Hi-Y, 'B' basketball at
EHS, Block 'E' member

FROELIGER, HAZEL

Academic, 3 1/2 years to graduate

GARCIA, CARNATION

Vocational, C. S. F. member
three semesters, letterman at
EHS in football, basketball,
and track, Honor 'E' member,
Block 'E' member, Key Club
member

GARDELLA, JOSEPHINE

Academic, Edison newspaper
columnist, Latin Club

GARRISON, JACK

Academic, C.S.F. member, tennis
team at Eureka, 3 1/2 years
to graduate

GEBHARDT, JIM

Academic, varsity baseball '45,
'46

GODINEZ, EVANGELINE

Academic, orchestra

GOERING, DOLORES

Academic, C.S.F. one semester,
3 1/2 years to graduate

GOERING, DORIS

Academic, 3 1/2 years to graduate

GONG, YONG

Commercial, 3 1/2 years to graduate

GOSSER, MARIAN

Academic, French Club

GRAY, GARY

Academic, Guard and Tackle
staff, Blue and White artist

GRAY, MARY

Academic, 3 1/2 years to graduate

GRIFFEN, JOE

Academic, 3 1/2 years

GRISCHOTT, BARBARA

Academic, secretary-treasurer
EHS Student Control, columnist
Edison High newspaper,
Spanish Club, Round Table,
C.S.F. member five semesters

GRUBBS, BARBARA

Academic, secretary Girls'
Student Control, Tri-Avante
member



Susan Devencenzi
Trinie Elias
Jean Fitzsimmons
Ozeer Ford
Raymond Franzone
Carnation Garcia

Mary Dickson
James Ensign
Darrell Fleming
Rosalie Fornaciari
Hazel Froeliger
Josephine Gardella

Barbara Driggs
Bill Evans
Al Flodin
La Verne Foster
Isao Fukushima
Geraldine Gardner

Gilbert Ege
Lee Figone
Mary Ann Ford
Jack Franks
Jack Gaggero
Jack Garrison

SPRING GRADUATES



Louis Gartner
Sally Gibbons
Dolores Goering
Marian Gosser
Mary Gray
Barbara Grubbs

Jim Gebhardt
Jerry Gilbert
Doris Goering
Mollie Goto
Joe Griffen
Bill Haqan

Phillip Gehman
Frank Gilliam
Ernest Gogna
Lydia Gracia
Lorraine Griggs
Maureen Hagio

Sue Gerling
Evangeline Godinez
Yong Gong
Gary Gray
Barbara Grishott
Mary Lou Hall

HAGIO, MAUREEN

Academic

HALLEEN, MARILYN

Academic

HALVORSEN, MARILYN

Commercial

HARBERT, BETTY

Academic

HAGAN, BILL

Vocational, C.S.F. two semesters, Block "E," Honor "E," Key Club, Spartan Hi-Y, EHS varsity basketball

HALL, MARY LOU

Academic, vice-president Girls' League, Student Control, vice-president 12B Class, Tri-Avante treasurer

HALLING, NANETTE

Academic, secretary 12A Class, band, secretary Tri-Avante

HARRIS, FLOYD

Academic, C.S.F. two semesters, track

HARRISON, LOIS

Academic, C.S.F. three semesters, president and secretary Tri-Creama

HAUSER, MARY

Academic, Rally Committee, vice-president French Club, chaplain Tri-Avante

HERNANDEZ, FIDEL

Vocational, EHS commissioner of awards, treasurer Key Club, president Block "E," varsity baseball, football at EHS

HICKEY, CLAUDIA

Commercial, Student Control

HOFFMAN, MELVIN

Academic, C.S.F. six semesters, secretary Stamp Club

HOLMES, ROBERT

Academic, track letterman, Quad-C member

HUDSON, GLORIA

Academic, secretary Tri-Ariba

IRELAND, PAT

Academic, Troubadours, Play Production

JEW, WING

Academic, secretary-treasurer, vice-president, and president of Chinese Club, secretary-treasurer, vice-president, and president of Mencius Hi-Y, C.S.F. four semesters, 3 1/2 years to graduate

JOHNSON, MAXINE

Commercial, Student Control

SPRING GRADUATES

KALLGREN, ALVIN

Academic

KARIM, EVA

Commercial

KATO, TETSUYA

Academic

KIRSTEN, WARREN

Academic

KEISER, BONITA

Academic, president, secretary Tri-Ferese, secretary Hi-Y, Tri-Y Council

KIDD, RONALD

Academic, C.S.F. seven semesters

KING, DELBERT

Academic, commissioner of athletics, president Block "S," Bee basketball, varsity football, basketball, track, Round Table, Troubadours, Student Control, vice-president and president of Quad-C

KOGA, DAVIS

Vocational

KRAFFT, BEVERLY JEAN

Commercial

KOSICH, KATHERINE

Commercial, C.S.F. member

KUKERT, RUTH

Commercial

LAMBERTY, JACK

Academic, track letterman, "B" basketball

LAWSON, DAVID

Academic, band, Acmy Hi-Y member, 3 years to graduate

LEE, ESTHER

Academic, president Chinese Club, Junior Council, 3 1/2 years to graduate

LEMA, DAVID

Academic, sports editor of Guard and Tackle, yell leader, Press Club member, Trojan Hi-Y member

LEWIS, JOYCE

Academic, Round Table Club vice-president, secretary IIA Class, Tri-Avante member

LIVINGSTON, NORMA

Academic, vice-president IIA Class, president I2B Class, president Girls' League, Student Control, Rally Committee, song leader, president Tri-Avante

LOGAN, WILLARD

Academic, varsity baseball



Marilyn Hallee
Silva Hardesty
Alice Heino
Helen Hilliker
Tom Horita
Pat Ireland

Nanette Helling
Floyd Harris
Fidel Hernandez
Frances Hinkle
Gloria Hudson
Sam Ishihara

Marilyn Halvorsen
Lois Harrison
Claudia Hickey
Melvin Hoffman
Jacqueline Hughes
Billy Jaggars

Betty Harbert
Mary Hauser
John Hickey
Robert Holmes
Juanita Hughes
Daniel Jaton

SPRING GRADUATES



- LADD, JUNE
Academic
- LAGRUTTA, BEN
Vocational
- LAWRENCE, BOB
Academic
- LEISSE, DELORES
Academic, Tri-Ferese member
- LEW, WAYNE
Academic
- LIBHART, JACK
Academic
- LIBHART, NORMA JEAN
Commercial
- LOBROVICH, GENEVIEVE
Academic
- LOVEDAY, PEARL
Commercial
- LUTSKER, EARL
Academic
- LONG, EARLDWIN
Academic, vice-president
C.S.F., assistant editor of
Guard and Tackle, "A" aver-
age during four years of
high school
- LOUIE, ANNETTE
Commercial, 3½ years
to graduate
- LOWN, WILBUR
Academic, orchestra
- LYONS, CHARLA
Academic, Junior Red Cross
chairman, band, Guard and
Tackle staff, Press Club mem-
ber, Blue and White pho-
tographer, Tri-Avante member
- McKAY, MARILYN
Academic, Junior Red Cross
chairman, Guard and Tackle
staff, Blue and White staff
- McKEE, FRANCEEN
Academic, Play Production
- McNABB, JIM
Vocational, Block "E," varsity
basketball, track at EHS
- McNEILL, GEORGIA
Academic, German Club
- MackENZIE, ELINOR
Academic, band, Tri-Ferese
member
- MARCHETTI, JANET
Academic, orchestra
- MARKS, JACK
Academic, secretary Quad-C
- MAYO, JOHNNIE
Commercial

Wing Jew
Norma Johnson
Eva Karim
Delbert King
Beverly Jean Krafft
Jack Lamberty

Don Johnson
Myrtle Jones
Tetsuya Kato
Warren Kirsten
Ruth Kukert
Bob Lawrence

Marian Johnson
Patty Joy
Bonita Keiser
Davis Koga
June Ladd
David Lawson

Maxine Johnson
Alvin Kallgren
Ronald Kidd
Katherine Kosich
Ben Lagrutta
Esther Lee

SPRING GRADUATES

MANCHESTER, RUSSELL

Academic

MARENGO, LLOYD

Academic

MARTIN, BARBARA

Academic

MARSH, NEAL

Vocational, 3½ years to graduate

MARTIN, BETTY

Academic, 3½ years to graduate

MATHESON, JESSIE

Academic, Play Production

MAYFIELD, MARVIN

Academic, band

McMAHON, GLORIA

Academic

MERCADO, JOE

Vocational, Block "E," varsity football EHS

MILLER, ALBERTA

Academic, Student Control

MORROW, DANIEL

Academic, vice-president and secretary of Quad-C, track team

MOSQUEDA, GEORGE

Vocational, C.S.F. two semesters, Key Club, 3½ years to graduate

MIKKELSEN, ELSIE

Academic

MITCHELL, CLARA

Academic

MITCHELL, DENA

Academic

MORLAN, BETHEL

Commercial

MORRIS, DICK

Academic

MORRIS, GERALDINE

Commercial

MOTOIKE, BEN

Academic

MUNS, CLAUD

Vocational

MURANO, TAKEKO

Academic

MYERS, DAYME

Academic, Tri-Creama



Delores Leisee
Norma Livingston
Annette Louie
Charla Lyons
Jim McNabb
Janet Marchetti

David Lema
Genevieve Lobrovich
Pearl Loveday
Marilyn McKay
Georgia McNeill
Lloyd Marengo

Wayne Lew
Willard Logan
Wilbur Lown
Franceen McKee
Elinor MacKenzie
Jack Marks

Norma Libhart
Earldwin Long
Earl Lutzker
Gloria McMahon
Russell Manchester
Neal Marsh



Barbara Martin
 Johnnie Mayo
 Dena Mitchell
 Daniel Morrow
 Takeko Murano
 Kathryn Nekitos

Betty Martin
 Joe Mercado
 Bethel Morlan
 George Mosqueda
 Dayme Myers
 Robert Neumiller

Jessie Matheson
 Alberta Miller
 Dick Morris
 Ben Motoike
 Pat Nassoiy
 Vonnee Neuvert

Marvin Mayfield
 Clara Mitchell
 Geraldine Morris
 Claud Muns
 Helen Nekitos
 Lois Neville

SPRING GRADUATES

- NEKITOS, KATHRYN
 Academic
- NEUMILLER, ROBERT
 Academic
- NEVILLE, LOIS
 Academic
- NESHIKAWA, KAZUYE
 Academic
- NESHIMOTO, JOANNE
 Academic
- NOGUCHI, KINYA
 Academic
- NEUVERT, VONNEE
 Academic, High Steppers
- NASSOY, PAT
 Academic, song leader,
 Tri-Avante member
- O'CONNOR, BESSIE
 Academic
- OKAMURA, FRANCES
 Academic
- OLSON, DORTHY
 Academic
- OSHIMA, FRED
 Academic, C.S.F. member
- O'DOUGHERTY, KENNY
 Academic, Troubadours,
 Rambler Hi-Y member
- OGDEN, JEAN
 Academic, Glee Club
- PADILLA, JOE
 Academic, Troubadours
- PARISOTTO, GEORGE
 Academic, 3 1/2 years
 to graduate
- PARDINI, GEORGIA
 Academic, Tri-Creama member
- PARRIS, PERNILLA
 Academic, Tri-Ariba member
- PEACHER, ERIC
 Academic
- PALACIOS, ANITA
 Academic
- PEMBERTON, NEIL
 Academic
- PESETTI, IVO
 Academic
- PIACENTINE, JOSEPHINE
 Commercial
- PIERCE, JACK
 Academic
- PIERCE, KEITH
 Academic
- POPE, CHARMAINE
 Academic

SPRING GRADUATES

PARTRIDGE, HELVETIA

Academic, 3 1/2 years to graduate

PETERSON, JUNE

Academic, Tri-Arriba member, 3 1/2 years to graduate

PETREQUIN, GORDON

Academic, varsity track, 3 1/2 years to graduate

PICCARDO, MICKEY

Academic, Round Table Club

PISTER, PHILIP

Academic, president C.S.F., band six semesters, Merit Award, varsity basketball, Block "S," track manager

POLLONI, JOSEPHINE

Commercial, EHS Student Control

PUTMAN, SHIRLEY

Commercial, 3 1/2 years to graduate

RAMIREZ, FRANCISCO

Vocational, Honor "E," Key Club

RAUZI, ROSEMARY

Academic, High Steppers

REED, BETTY

Academic, 3 1/2 years to graduate

REELHORN, ROBERT

Academic, C.S.F. one semester, vice-president Acmy Hi-Y, 3 years to graduate

REHNERT, HOWARD

Academic, Rally Committee, president Block "S," Round Table Club, varsity basketball, baseball, Rambler Hi-Y member

REMBOLD, FRANCES

Academic, Student Control, vice-president Tri-Avante, Tollit tennis champion three years, band four semesters

RENARD, MARY

Academic, custodian, commissioner of records, vice-president of student body, Student Control, C.S.F. member, Round Table Club, song leader, Guard and Tackle staff, Tri-Avante member, voted Outstanding Senior

ROBERTS, MARLYN

Academic, Guard and Tackle staff, Blue and White staff, Tri-Avante member

ROBERTSON, BARBARA

Academic, band

ROBERTSON, LORETTA

Academic, Play Production



Kazuye Nishikawa
Jean Ogden
Joe Padilla
Helvetia Partridge
Gordon Petrequin
Josephine Polloni

Joanne Nishimoto
Frances Okamura
Georgia Pardini
Neil Pemberton
Josephine Piacentini
Charmaine Pope

Kinya Noguchi
Dorothy Olson
George Parisotto
Ivo Pesetti
Mickey Piccardo
Shirley Putman

Kenny O'Dougherty
Fred Oshima
Pernilla Parris
June Peterson
Philip Pister
Francisco Ramirez

SPRING GRADUATES



- ROGERS, JOYCE
Academic, Tri-Ferese vice-president
- ROSE, ROBERT
Academic, 3½ years to graduate
- RUIZ, VIOLA
Commercial, president of Distributive Education Club
- RUSK, BOBBIE JEAN
Academic, 3½ years to graduate
- RYLAND, BOB
Academic, band eight semesters
- RANEY, DON
Academic
- RINCKER, RUTH
Academic
- RISHWAIN, MARY
Commercial
- ROCCO, LORRAINE
Academic, Tri-Ferese member
- RODEY, HELEN
Academic, Tri-Creama member
- ROSS, HELEN JEAN
Commercial
- ROSS, KARL
Academic
- RUSSELL, BETTY J.
Commercial
- SANCHEZ, MAURO
Academic, J. V. football, basketball, baseball, treasurer of Bulldog Hi-Y
- SANGUINETTI, ROBERT
Academic, varsity football, basketball, baseball, vice-president Block "S," vice-president Rambler Hi-Y
- SANTANA, PETER
Academic, band
- SCONYERS, HAROLD
Academic, commissioner of athletics, Rally Committee, 12A Class president, varsity basketball, Quad-C member, 3½ years to graduate, chosen King of Stockton High spring '46
- SHAPIRO, RUTH
Academic, 3½ years to graduate
- SHERMAN, BETTY LEE
Academic, Blue and White staff, Tri-Ferese member
- SILVERS, BEVERLY
Academic, Play Production

Don Raney
Howard Rehnert
Mary Rishwain
Lorraine Rocco
Helen Jean Ross
Betty J. Russell

Rosemary Rauzi
Frances Rembold
Marlyn Roberts
Helen Rodey
Karl Ross
Bob Ryland

Betty Reed
Mary Renard
Barbara Robertson
Joyce Rogers
Viola Ruiz
Bernice Sakurai

Robert Reelhorn
Ruth Rincker
Loretta Robertson
Robert Rose
Bobbie Jean Rusk
Mauro Sanchez

SPRING GRADUATES

SIMPSON, MARIAN

Academic, editor of Blue and White, Student Control, Press Club secretary, secretary Round Table Club, Guard and Tackle staff, Tri-Avante member, voted Outstanding Senior

SUSICH, ROLAND

Academic, vice-president 12A Class, Rally Committee, Block "S," Quad-C member

SAKURAI, BERNICE

Academic

SATO, BERT

Academic

SCHMID, DOLORES

Academic, Tri-Ferese member

SCHMID, LESLIE

Vocational

SCHMIDT, GERALDINE

Commercial

SCHULZ, ELSIE

Academic

SHELTON, JOYCE

Commercial

SHIVELY, RICHARD

Academic

SHOLER, MEADY

Academic

SILSBY, JACQUELYN

Academic

SINGER, NADINE

Commercial

SMITH, ALVIN

Vocational

SMITH, FRANCIS

Commercial

SMITH, LOIS JEAN

Academic, Tri-Creama member

SMITH, LESLIE

Academic

SOLA, EVA LYNN

Academic

SPARKS, BEATRICE

Commercial

SPARKS, FRANCES

Commercial

SPERRY, GLADYS

Commercial

SPEEGLE, MAISIE

Academic, Tri-Creama member

SQUIRES, BETTY

Commercial

STULL, RAY

Academic



Robert Sanguinetti
Leslie Schmid
Ruth Shapiro
Meady Sholer
Nadine Singer
Lois Jean Smith

Peter Santana
Geraldine Schmidt
Joyce Shelton
Jacquelyn Silsby
Alvin Smith
Marguerite Smith

Bert Sato
Elsie Schulz
Betty Lee Sherman
Beverly Silvers
Francis J. Smith
Patsy Smith

Dolores Schmid
Harold Sconyers
Richard Shively
Marian Simpson
Leslie Smith
Philip A. Smith

SPRING GRADUATES



Susan Smith
Doris Mae Sousa
Kathryn Spayd
Donald Stites
Margaret Suttles
Alice Takumune

Velma Smith
Geneva Southerland
Maisie Speegle
Lorraine Stone
Sanford Sweet
Kazuyuki Takeda

Mary Smyth
Beatrice Sparks
Gladys Sperry
Roland Susich
Arlene Tabacco
McClellon Terry

Eva Lynn Sola
Frances Sparks
Betty Squires
Ray Stull
Betty Tait
Josephine Tristant

STITES, DONALD

Academic, president student body, varsity basketball, football, commissioner of organizations, president Quad-C, C.S.F. five semesters, treasurer Round Table Club, Block "S," voted Outstanding Senior

STONE, LORRAINE

Commercial, majorette, Tri-Creama member

WEBORG, BETTY LOU

Academic, Guard and Tackle staff, senior editor Blue and White, Press Club, Latin award, Tri-Ferese member, Play Production

WELDON, BOB

Vocational, EHS varsity baseball

WHITE, PAUL

Academic, basketball

WILLIAMSON, EARL

Academic, track

WINSTEAD, JEANNE

Commercial, 3½ years to graduate

WISE, JIMMY

Academic, Stamp Club, football, 3½ years to graduate

WITT, DOROTHY

Academic, orchestra

YOUNG, ROBERTA

Academic, Troubadours, Student Control

SMITH, MARGUERITE

Academic, Troubadours, Round Table Club, Tri-Avante member

SMITH, PATSY

Academic, song leader, Tri-Avante member

SMITH, PHILIP

Academic, basketball

SMITH, SUSAN

Academic, vice-president Girls' League, Student Control, Blue and White staff, Guard and Tackle columnist, Tri-Avante chaplain

SMITH, VELMA

Academic, reporter Edison High newspaper

SMYTH, MARY

Academic, 3 years to graduate

SOUSA, DORIS MAE

Commercial, Glee Club

SOUTHERLAND, GENEVA

Academic, band

SPAYD, KATHRYN

Academic, Play Production

SPRING GRADUATES

SWEET, SANFORD

Academic, C.S.F. seven semesters, Press Club, sports editor Guard and Tackle, sports editor Blue and White, Troubadours, treasurer Rambler Hi-Y, varsity basketball, Latin award

TABACCO, ARLENE

Commercial

TAIT, BETTY

Academic, Tri-Creama chaplain

TAKAMUNE, ALICE

Academic

TAKEDA, KAZUYUKI

Academic

TERRY, McCLELLON

Academic

TOAL, HUGO

Academic

TRISTANT, JOSEPHINE

Commercial

TURNER, IRENE

Commercial, Tri-Creama member

TRUMBO, CLAUDEAN

Academic, band, Play Production

TUPPER, NELLIE

Commercial, editor Edison High newspaper, Honor "E"

VAN DYKE, CLAUDIA

Academic, secretary 12A Class, business manager Blue and White, song leader, Press Club, president and secretary Tri-Avante, reporter of Guard and Tackle

VANNUCCI, LOLA

Academic

VARGAS, HAROLD

Academic, Quad-C member

VAUGHN, AUDREY

Academic

VERBER, DICK

Academic

VLAVIANOS, JOHN

Academic

WALKER, MARGARET

Academic

WATANABE, BOB

Academic, varsity football, Block "S" member

WEAVER, MARGARET

Academic, Tri-Ferese member

WEEKS, ANNABELLE

Academic



Claudean Trumbo
Reid Van Noate
John Vlavianos
Betty Lou Weborg
Paul White
Jeanne Winstead

Nellie Tupper
Lola Vannucci
Margaret Walker
Anabelle Weeks
Richard Williams
Jimmy Wise

Irene Turner
Harold Vargas
Bob Watanabe
Bob Weldon
Earl Williamson
Dorothy Witt

Claudia Van Dyke
Audrey Vaughn
Margaret Weaver
Rosella Wentzel
Dolores Wilson
Pat Woelfel

SPRING GRADUATES



WENTZEL, ROSELLA

Commercial

WILLIAMS, RICHARD

Academic

WILSON, DOLORES

Commercial

WOELFEL, PAT

Academic, Tri-Ferese member

WOLFENBERGER, NOLA

Commercial

WONG, CLARA

Commercial

WONG, DOROTHY

Commercial

YAGI, HARU

Commercial

YOUNG, SHIRLEY

Commercial

YTURRI, DONALD

Academic

ZEITER, VICTOR

Academic, C.S.F. member

Nola Wolfenbarger
Roberta Young

Clara Wong
Shirley Young
Hugo Toal

Dorothy Wong
Donald Yturri
Dick Verber

Haru Yagi
Victor Zeiter

CAMERA-SHY FEBRUARY GRADUATES

Lea Baker
Dennis Brueckner
Tom Burduck
Clarence Carlos
Velma Cooley
Robert C. Cornell
Angelo Cundari
Frank Darnell
Gayle Devereaux
Bird L. Dyer
Gertha Cross
Marie Cross
Harry Kaneko

Mun Mah
James Mowrey
Don Neu
Lloyd Norman
Harold Eugene Ott
Joe Ramirez
Joseph F. Razo
Gabriel Sallah
Robert Singer
Marie Slape
Robert L. Stein
Royce Valk
Verna Wagner
Gene Wodkins

OTHER JUNE GRADUATES

Miriam Allen
Carroll Anderson
Mary Carlock
Connie Cordova
Jacqueline Crow
George Doi
Bob Fairless
Earl Higgins

Walter Huber
Bob Hunefeld
Jack Libhart
Elsie Mikkelsen
Bessie O'Connor
Anita Palacios
Eric Peacher
Jack Pierce
Keith Pierce