

Hubert



Fall Officers—R. Caulkins, G. Malloy, H. Molina, C. Lenz B. Ahearn, C. Denzer.
 Spring Officers—I. Rammer, M. Simpson, P. Britton, M. Boccoli.

JUNIORS

You who have been here at school for a year or more will remember the fall Junior Class and the good times sponsored by it; for you who have just been here since the past semester or have recently come from another school, the following paragraph is written.

Instead of the usual "Junior Jinx" this year, the class president, Hubert Molina, decided it was time to do something original. To plan for the coming event, the Junior Class held a meeting in the high school auditorium, with the resulting idea of an ice-skating party; thus was born the "Ice-Hop". From then on plans developed into actuality and the juniors became a busy group. Committees were appointed to determine cost of renting the rink, cost of printing tickets, and to decide the best night for the "hop". Within a few weeks everything was completely arranged, the date set for the evening of January 14, immediately following the Stockton-Turlock basketball game. Skating was the favorite sport that night, for the rink was filled to capacity. Both students and teachers came to see the fun, and no one was disappointed. The "Ice-Hop" had been a success! Fall IIA class officers: Hubert Molina, president; Corrine Denzer, vice-president; George Malloy, secretary; Fall IIB class officers: Bonnie Ahearn, president, Richard Caulkins, vice-president; Carolyn Lenz, secretary.



JUNIORS

Row 1—Reva Jane Greenblatt, Celia Ortiz, Olga Zeiter, Frances Duffy, Bertha Horst, Mary Borelli, Beverly Evanhoe, Dorce Frank. Row 2—Lorraine Dotson, Caroline Islas, Maxine Wagner, Josephine Ardanaz, Bethel Ritter, Mayrina Perasso, Q. Loun Cho, Joyce Howell. Row 3—Gene Prioli, Joe Potenti, Robert Zollinger, Richard Vignolo, William Russell, Jean Kosta, Mary Janice Godfrey. Row 4—Sydney Ruvkur, Arnold Schamber, Ben Reames, Harold Price, Peter Rodriguez, Dick Shyers.

Row 1—Marilyn Nelson, Frankie Hughes, Vivian Mayo, Barbara LaBerge, Lila Lee Henney, Carol Johnson, Elaine Kingston, Pat Mowry. Row 2—Anella Herrmann, Virginia Mills, Effie McKee, Charles Holmes, George Lee, John Madrid, Dick Hunt. Row 3—Clifford Johnson, Dale Harmon, Bob McCrary, Shew Nom Hong, Frank McClory, David Mac Rae, Louis Lechich.

Row 1—K. Chiarchianis, Jacqueline Taylor, Carol Anne Cox, Melva Fox, Noma Gormsen, Joan Tuttle, Beverly Hodgins, Lola Galli. Row 2—N. Belew, M. Platt, J. Hoover, Margaret Branstetter, Erlene Bradshaw, Emily J. Alcorn, Opal Cox. Row 3—Clayworth Rosamond, Norma Giovanetti, Jacqueline Cotterell, Phyllis Peri, Georgia Pantellos, Gladys Vignolo, Margaret Chiapale. Row 4—Bill Gumpert, Pete Chalmers, Paul Bell, George Caletini, Jack Ferrill, Frank Gilleran, Jack Carr.





JUNIORS

Page Forty—Group One

Row 1—L. Saylor, B. Ryland, L. Walker, E. McKee, D. Kelly, P. Kelly, L. Rodriguez, J. Mah. Row 2—I. Robbins, P. Snider, J. Yant, P. Ohm, R. Lind, G. Petersen, M. Lee. Row 3—M. Peters, S. Marzolf, M. Longacre, S. Montgomery, E. Meyn, V. Wagner, P. White, M. Vincenta, B. J. Ritchey. Row 4—M. Swift, B. Stephens, V. Lewis, M. Paddock, M. Jones, R. Loveday. Row 5—B. Ratto, R. Pizzo, V. Rizzo, M. A. Vukich, B. Mazzer, E. Schulz, H. Smith, C. Smith. Row 6—A. Sanderson, J. Solari, P. Smith, F. Solomon, B. Smith, C. Schmid, I. Rammer. Row 7—D. Scott, T. Sommerfeld, B. Remington, G. Sinnock, G. Schlink, S. Sandelius. Row 8—T. Rodriguez, P. Reasoner.

Page Forty—Group Two

Row 1—E. Feis, S. Caballero, A. Genetti, V. Frombolo, B. Golden, A. Hooper, P. Gardner, J. Houston, L. Hunt. Row 2—R. Robertson, J. Fisher, F. Fusie, J. Griner, C. Chavis, B. Kristensen, I. Carson, B. Clites, R. Dinkel. Row 3—J. Fowler, E. Dombrowski, K. Lee, P. Jones, B. Crane, T. Jaton, A. Mazzetta, L. J. Bevilacqua, V. Jessup, D. Kidwell. Row 4—M. Kloppling, H. Herrmann, I. Clausnitzer, P. Herold, M. Jacobs, E. Eichelberger, R. Fimbel, P. Britton, E. Greene. Row 5—A. Frederick, R. Kingery, G. Kline, I. J. Kaiser, J. Elliot, J. Lundblad, B. Gauthier, C. Garibaldi, A. Klump. Row 6—C. Esques, M. Johnson, E. Hunt, H. Johnson, O. Krueger, B. Gillan, D. Gross, D. Knox. Row 7—D. Perez, O. Hidalgo, V. Hewitt, P. Grover, B. Garretson, R. Cates, J. Harmeling, D. Barham.

Page Forty—Group Three

Row 1—A. Olson, M. Leach, M. Moor, J. La Roche, B. Meyers, P. Lee, B. McGregor, P. Loduca. Row 2—H. Lewis, E. Marsh, C. Paulson, A. Maslin, C. Lenz, J. Livingston, J. A. McEwen. Row 3—B. Muller, E. Lee, Judy Piepkorn, E. McPherson, B. Lange, S. Levinson, P. Nelson, W. Milligan. Row 4—C. Morais, M. Maskus, F. Malpasso, E. Lewis, H. Lapcik, Y. Owens, B. Steel. Row 5—A. Wise, L. Underwood, L. Sutherland, D. Underwood, J. Tucker, G. Van Vlack, J. Watters. Row 6—J. Warren, A. Tucker, J. Stoltz, J. Willett, J. Von Husen, J. Yost, R. Weeks. Row 7—G. Wodkins, W. Willis, E. Stites, Kim Yip, D. Woods, F. Valenzuela, E. Way.

Page Forty-One—Group One

Row 1—G. Hocking, V. Latino, L. Martin, C. Munoz, A. Jones, R. Garcia, L. Cloos, V. Gonzales. Row 2—B. Multhauf, D. Meyer, P. Flaningam, K. Huntalas, B. Brown, B. L. Colfelt, L. Burruel. Row 3—I. Cardoza, H. Besotes, V. Lee, J. Madrid, D. Lee, B. M. Gall, B. Evans. Row 4—M. Manning, N. Harms, M. Bocoli, M. Johnson, P. McLaughlin, D. Reed, J. Clayworth. Row 5—B. Dickerson, J. Barkkett, P. Ah Tye, G. Henderson, G. Chelli, J. Gianelli. Row 6—L. William, S. Hill, B. Bromberg, J. Ingram, R. Hanson, D. Brown. Row 7—F. Fong, C. Forbes, B. Fitzgerald, J. Health, F. Darnell, D. Delaney. Row 8—J. Fetzer, B. Gardner, M. Autry, A. R. Allan, J. T. Belesiss, B. Davenport. Row 9—G. Adams, D. Igo, B. Hull.

Page Forty-one—Group Two

Row 1—B. Strub, A. M. Wells, L. Tillman, W. Stewart, B. Savage, J. Perkins, G. Pappas, S. Rodriguez. Row 2—N. Poggi, M. Spino, J. Winstead, P. Powers, L. Rovera, J. Smith, A. Segovia, T. Rosek. Row 3—S. Moore, M. Pimentel, B. Jeffrey, D. Stone, E. Rose, S. Setzer, G. Martin, C. Raffetto. Row 4—D. Marshall, F. Miramontes, B. Rippey, R. Valk, D. Trachiotis, F. Madden, G. Rock, J. Chan. Row 5—F. Uomini, D. Meyer, F. Rizzo, H. Stevens, J. Veebrock, C. Wong, E. Wong. Row 6—M. Winchel, M. Schwoerer, R. Young, S. Nickols, F. Wong, L. Fong, T. Kostas.



JUNIORS

Row 1—Nadine Thomas, Carmel Santella, Elvera Santella, Jessie Valdez, Betty Wagenmann, Adrienne Smith, Alice Silva, Maxine Tully. Row 2—Pauline Schwartz, Donna Mae Vincent, Sybil Wright, Betty Singer, Lois Wetzel, Alma Ungaretti, Ramona Spino, Eula Stewart. Row 3—Bill Fagnant, Harry Low, Wesley Johnston, Otto Horst, George Leipelt, Myron Latham, Evelyn Schefelbein, Doris Sanders. Row 4—Stanley Guiliani, Bob Ghilotte, Bob Labrusheire, Stuart Floyd, Bradley Sells, Ernest Lehn, Merle Harrison, Johnnie Gomes. Row 5—Reuben Klinger, Bill Isaacson, Bill Harper, Thomas Holmes, Virgil Lown, Jim Klientin, Bob Jackson, Donald Steel, Jack Mariani. Row 6—Don Earl

Womble, Jerry Haines, Donald Crewdson, Bill Kirsten Robert Henning, Frank Lopez, Leland Lutz, Frank Solari, Row 7—Bud Klein, Frank Ranzi, Bruce Goodwill, Clyde Byers, Joe Benbow.

Row 1—Essie Elsego, Eris Hall, Florita Godinez, Delores Eliab, Nellie Davini, Virginia Faselli, Marcelina Consiglieri, Pam Gomez. Row 2—Marjorie Hambow Geraldine Garibaldi, Daphne Copeland, La Verne Broker, Margaret Broker, Dorine Berry, Isabell Azevedo, Babara Alameda. Row 3—Betty Hermance, Bev Brown, Jacquelyn Huston, Melvina Camera, Dorothy French, Josephine Christensen, Dorothy Angermeier. Row 4—Bill Dal Porto, Bob Anderson, Ralph Cowen, John Bills, Jim Brown, Jack Costa. Row 5—Tom Burdick, Hillard Corren, Jack Pierce, Don Earl Womble, Gerald Chesebrough, Jack Bartlett, Steve Arzaga, Kenny Adams. Row 6—Bob Beerman, Robert Chapman, Eugene Balsley, Frankie Baldwin, Jim Abel, Frank Briare, Frank Bocek. Row 7—Fred Blei, Bob Burke, Clyde Dabadie, Ed Bingham, Richard Caulkins. Row 8—John Colombini, Robert Beckham, Clyde Byers, Rich Bramwell.

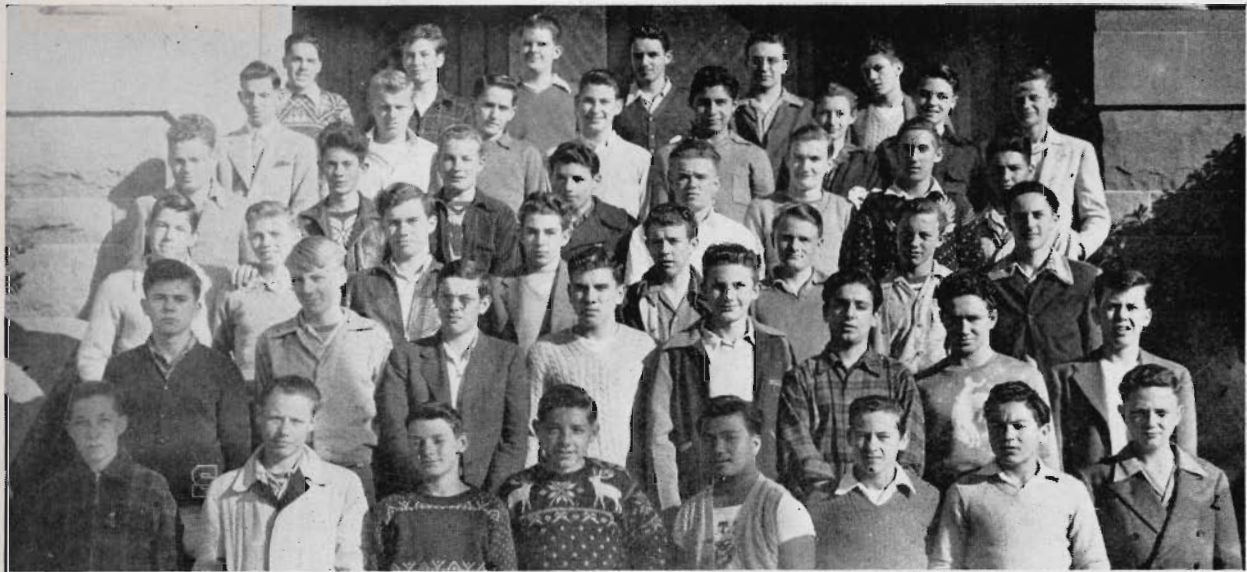


JUNIORS

Row 1—Margaret Coleman, Betty Avey, Verna Canote, Bertie Broderick, Rose Ducato, Betty Davis, Mary Lu Bush, Flora Adams. Row 2—Annis Cress, Dorothy Cusick, Phyllis Balduc, Gladine Baker, Jay Deady, Jerrie Cowan, Miriam Allen. Row 3—Pat Adams, Bonnie Athearn, Barbara Adams, Jackie Berlingen, Donna Allen, Dorothy Beatie, Jean Cassidy. Row 4—Mae Criddle, Dorothy Wofford, Barbara Bayne, Les Baxter, Rowena Barquist, Sophie Chiarchianis, Alice Faye Bacon, Betty Carpenter. Row 5—Carl Palmer, Jerry Pauken, James Mimms, Milford D. Piel, Ray Morris, Glen Pierce. Row 6—Daniel Ng, Bob McDonald, Jim McTeer, Jim Ohm, Karl Maynard, Edward Oeck, Ronald Pezzi, Gerald Preeo.

Row 1—Peggy Rea, Herma Lie Rich, Jeanette Wilkinson, Ellen Marie Sorensen, Roberta Skadden, Jean Rose, Doris Roth, Ardell Turner. Row 2—Alberta Vassar, Ella Wiley, Betty Lou Thorn, Pauline White, Renee Sprinkle, Florence Totten, LaVerne Pooley. Row 3—Dorothy Seversen, Ramon Sherrill, Marcella Wilson, Frances Vogler, Edna Riggs, Maudellen Stagg, Doris Warren. Row 4—Lois Wright Junette Swanson, Bette Russell, Shirley Tillman, June Wilbur, Barbara Sutton, Virginia Spino. Row 5—Bernhardt Fransen, Lou Del Barba, Albert Fong, Ray English, Jim Gallagher, Budd Gianelli, Landon Gibbs. Row 6—Willis Fannon, Frank Eibing, John Flodin, James Ensign, George Dolby. Row 7—Dave Dunlap, Walter Deets, Roger Dossett, Pat Formby, Everette Eutsler.





SOPHOMORES

Page Forty-four—Group One

Row 1—M. Simpson, C. Van Dyke, P. Smith, M. Smith, N. J. Simpson, V. Scott, A. Vaughn. Row 2—J. Silva, K. Spayd, B. L. Sherman, L. J. Smith, B. Tait, I. Sullivan, W. L. Votaw, B. Silvers. Row 3—S. Smith, A. Weeks, D. Schmid, M. Weaver, F. Stoke, B. L. Weborg, J. Sears. Row 4—E. Comer, B. Blair, C. Anderson, F. Aulwurm, D. Curnow, C. Campion, B. Costa, A. Beers. Row 5—R. Calcagno, B. Becker, A. Aulwurm, G. Carver, H. Chan, K. Darby, R. Allan. Row 6—H. Bawden, E. Alling, R. Detrick, P. Jones, D. Babcock, G. Devereaux, J. Cecchim, N. Arata, B. Baylar.

Page Forty-Four—Group Two

Row 1—A. Louie, R. Wong, E. Lee, F. Jung, L. Wong, K. Florita, B. Nava, E. Gonzales, E. Bregante. Row 2—L. Ulm, G. Heskett, B. Telomani, D. Butts, D. Passadore, M. Dowler, D. Brassesco, H. Friedrick. Row 3—E. Clemens, P. Conwell, E. Alvarez, M. Elhardt, Y. Morotti, D. Ivers, B. Hazelbaker, A. Mendez. Row 4—C. Cho, G. Hitt, L. H. Gibson, P. Garmire, F. Calvelli, N. Chiarichianis, B. Crow, D. Diehl. Row 5—D. Burns, G. Fitzwater, E. Hash, K. Gong, H. Fong, E. Higgins, F. Copp, A. Anoto. Row 6—T. Cleur, D. Brown, W. Choi, J. Hilderbrand, J. Griffen, R. Gaedthe, D. Allen. Row 7—S. Dunn, C. Douglas, G. Evans, R. Head, K. Brown, D. Douglas.

Page Forty-Four—Group Three

Row 1—J. Marchetti, L. Rocco, A. Palacios, J. Rogers, L.

Mewberry, V. Neuvart, A. Pappas, D. Nichols. Row 2—M. Ricks, V. Price, E. MacKenzie, F. McKee, J. Matheson, G. Rodriguez, E. Mercer, D. Olson. Row 3—P. Parris, P. Nassoioy, M. Roberts, M. McKay, D. Markham, I. Rice, C. Pope, G. Pardini, D. Myers. Row 4—B. Owens, M. Renard, R. Rauzi, J. Rogers, C. Peipkorn, H. Nikitos, K. Nikitos, G. Mori. Row 5—B. Nowell, L. Masephol, M. Price, F. Price, F. Rembold, V. Marsh, C. Moore, M. McCune, R. Rowland. Row 6—P. Smith, G. Thomas, C. Broderick, T. Lira, B. Green, R. Johnson. Row 7—J. Phillips, A. Cundori.

Page Forty-Five—Group One

Row 1—I. Ellsworth, D. Petersen, S. Gomas, B. Fairless, C. Mar, B. Haley, J. Gaggero, G. Frehn. Row 2—P. Pister, H. Rehnert, A. Murphy, J. Marks, L. Marengo, M. E. Rishwain, C. Reed, J. Robinson. Row 3—L. Francois, B. Frost, P. Nicholls, E. Parsons, J. Franks, R. Manchester, A. Flodin, B. Greenberg. Row 4—E. Eggleston, F. William, J. Genasci, O. Newton, P. Eastham, M. Picardo, D. Morrow, J. Risso. Row 5—B. Poulin, T. French, B. Fischeo, F. Gilles, C. Gonzales, W. Orr, G. Gray, H. Hanna. Row 6—B. Neumiller, R. Merchant, B. Gravem, H. Hayes, G. Mencarelli, J. Gabhardt.

Page Forty-Five—Group Two

Row 1—A. Christensen, L. Figone, R. Gesula, L. Griggs, H. Hilliker, W. Johnson, A. Herno, Y. Alexander. Row 2—B. Hannameyer, D. Del Rio, L. Demichelli. Row 3—G. Armanino, S. Devenzenzi, R. Capurro, L. Baker, M. Halvarsen, P. Brown, J. Gilbert, B. Bevilacqua. Row 4—A. DeShazer, B. Doughty, B. Bonds, F. Busalacchi, B. Alameda, G. Gardner, D. Dinkel, K. Kosich. Row 5—L. Goetz, O. Gonzales, L. Dingway, O. Brown, B. J. Krafft, B. Hubbell, M. Baker, M. Johnson. Row 6—R. Horstkoda, B. McCall, J. Lambertv, B. Hutcheon, D. Lema, E. Crawford, C. Hickey. Row 7—G. Huey, G. Johnson, W. Huber, E. Luttszer, R. Kidd, M. Hoffman, R. Holmes. Row 8—R. Knox, D. Jaton, E. Long, D. King, A. Kallgren, G. Lamb. Row 9—R. Lobchy, B. Humefeld, R. Jordan, W. Long.





SOPHOMORES

Page Forty-Six—Group One

Row 1—A. Kragen, E. Baker, C. Benelisha, R. Dunn, M. Martin, J. Burton, C. Dunn, M. Bradford, G. Dively.

Row 2—C. Hanshaw, P. Giottonini, A. Gauger, M. Dickson, L. Devincenzi, S. Arthur, J. Coats, L. Behrens, J. Apperson, A. Moor. Row 3—M. Stockdale, G. Borcham, J. Peterson, P. Stout, L. Carde, B. Bauman, R. Fornaciaci, B. Dennis, C. Arent, L. Storer. Row 4—M. House, D. Goering, Doris Goering, E. Lee, E. Ng, S. Dunn, M. Thompson, S. Pappas, A. Biarden, J. Barth, Row 5—E. Guthrey, W. Allan, A. Forrest, S. Saliny, M. Guiffing, B. Chaudron, J. Martin. Row 6—C. Clemenson, S. Bonnar, C. Cardova, M. Daniels, L. Ferdman, R. Shapiro, A. Barrows.

Page Forty-Six—Group Two

Row 1—L. Bantillo, C. Estep, B. Ewing, C. Evans, B. Collet, P. Browning, M. Ford, B. Carlson. Row 2—M. Clark, C. Andrews, D. Claussen, S. Champion, P. Cowin, P. Emerson, S. Brandon, J. Davison. Row 3—V. Zeiter, L. Ellis, L. Brooks, U. Dagg, P. Black, C. Cunningham, M. Agnew, A. Dilbeck. Row 4—G. Ross, R. Harr, P. Santana, R. Williams, B. Shaiffer, T. Steinbrecker, S. Steele, M. Taylor, B. Rytanel. Row 5—R. Van Noate, J. Senn, R. Zeh, K. Ross, R. Shively, P. Smith, B. Sullivan, B. Sanguinetti, D. Toney. Row 6—B. Snowden, J. Willitts, J. Vlavianos, R. Sorensen, L. Smith, L. Towle, P. White, D. Sutes. Row 7—W. Zenz, J. Wong, B. Staudenraus, S. Sweet, D. Tyrell, R. Wallis, H. Vargas, D. Waugh, R. Stultz.

Page Forty-Six—Group Three

Row 1—E. Godinez, A. Lee, N. Johnston, C. Lyons, N. Livingston, J. Lewis, G. Hall, L. Harrison. Row 2—B. Grubbs, N. Hall-

ing, B. Keiser, D. Goldsworth, F. Hinkle, B. Lamb, C. Kuijkendall, M. Gosser. Row 3—M. Halleen, M. Hall, R. Jarvis, D. Hanshaw, G. Lobrovich, J. Hughes, J. Hussey, B. Harbert. Row 4—M. Hauser, P. Ireland, G. Parisotto, R. Smith, T. Toy, E. Roberts. Row 5—J. Stewart, J. Wadlow, G. Petrequin, R. Pedersen, B. Stark, R. Rose. Row 6—A. Sapan, M. Vereggo, W. Sanguinetti, T. Shumway, J. Thompson. Row 7—M. Rishwain, B. Ramirez, J. Starr, R. Solari, H. Seonyers, J. Wise.

Page Forty-Seven—Group One

Row 1—C. Spurgin, B. Morlan, M. Shire, G. Morris, P. Loveday, N. Singer, G. Sperry, G. Schmidt. Row 2—V. Melton, C. Wong, B. Squires, J. Mayo, M. Senn, M. Suttles, H. Sheppard, S. Young. Row 3—F. Sparks, B. Sparks, M. Yost, A. Tabacco, C. Wolfe, R. Wentzel, N. Libhart, J. Zola. Row 4—W. Jew, J. Oneto, M. Logan, K. Lee, M. Mah, S. Hong, E. Kopping, J. Mepham. Row 5—J. Knox, R. Minges, G. McCauley, D. Jackson, H. Kotez, J. Orr, G. Morris. Row 6—F. Newman, H. Lee, D. Oris, I. May, R. Nielsen, F. Hosc, J. Holmes.

FRESHMEN

Page Forty-Seven—Group Two

Row 1—D. Lira, F. Lema, B. Jacobsen, G. Knox, H. Martin, S. Kaplan, B. Lynch, M. Koo. Row 2—D. Martin, M. Marcellin, L. Klemme, J. Madsen, B. Moore, B. Jordan, C. Lamb, S. Field, B. Hash. Row 3—E. Molina, L. Moran, P. Morrison, J. Menking, J. Morrow, W. May, P. Maris, C. Johnson. Row 4—J. Morris, D. Jolly, C. Isaacson, . Masenohl, B. Moore, M. McPherson, F. Kelley, T. Douglass. Row 5—R. McKinley, A. Leer, M. Loduca, J. Laughlin, W. Johnson, D. Griffin, D. Harpold. Row 6—E. Haines, E. Early, D. Guenther, B. Dominguez, J. Elliott, R. Gian-necchini, B. Henretty. Row 7—B. Drewes, R. Edgerton, E. Gillespie, A. Gotelli, D. Gallagher, H. Gibson, E. Fairestir, R. Hay. Row 8—B. Heryford, J. Dietrich, K. Geottman, J. Gardner, T. Gehr, B. Bay, R. Ehlers, A. Hawk.





FRESHMEN

Page Forty-Eight—Group One

Row 1—C. Harrison, G. Foppiano, F. Filippini, A. Eiselen, L. Graber, E. Herrera, C. Gibbs, B. Henry. Row 2—M. Huber, G. Hanrahan, B. Frietas, L. Fechner, M. Eberhardt, B. Hess, L. Garibaldi, J. Finkbohner. Row 3—D. Glynn, N. Fetzer, J. Guntert, I. Huston, D. Evans, M. Herring, V. Hunter. Row 4—M. Burton, M. Bonds, B. Beardsley, V. Fergusson, V. Harris, M. Gray, N. Hillious. Row 5—J. Bertaina, D. Burnham, C. Curnow, J. Boggs, R. Bergstrom, D. Deveglio, L. Bernard. Row 6—D. Anthony, L. Andrade, B. Bley, M. Cannon, A. Bianchi, R. Browne. Row 7—A. Ahearn, H. Burch, N. Crossley, G. Bertucelli, S. Borehardt, B. Beho. Row 8—P. Delucchi, J. Alvarez, B. Bay, B. Bennett, D. Baerwald, A. Busalucchi, T. AuClair.

Page Forty-Eight Group Two

Row 1—B. Pope, M. Myers, J. Seifert, P. Patton, D. Sollars, L. Perez, L. Peil, A. Rawlins. Row 2—D. Porsch, G. Peters, A. Novotny, W. Naiman, J. Schediwo, E. Pearson, B. Owen, M. Neumiller, M. Murphy. Row 3—S. Oeck, M. Smith, A. Scott, J. Phelps, L. Singer, K. Nesmith, N. Odelberg, O. Shaeffer. Row 4—J. Klemme, L. Job, B. Lease, T. Kosta, R. Lagorio, J. Mah, N. Powell, M. Nicora. Row 5—M. Lyons, B. Howe, L. Johnson, J. Mah, F. Low, R. Konig, N. Manning. Row 6—A. Higgins, P. Korbholz, D. Lazzareschi, C. Jacinto, D. Jones, C. Krein, A. Jones. Row 7—J. Holliger, E. McMahan, D. Lindsey, C. Lewis, D. Howell, S. Jenkins, A. Little, R. Isaacson.

Page Forty-Eight—Group Three

Row 1—M. Coblentz, B. Berlin, L. Buchwaller, M. Burnett, A. Banovitch, D. Courtney, A. Dalonzo, F. Colliver, D. Archer. Row

2—N. Augustine, H. Dentoni, D. Davidson, R. Aquistapail, L. Bartlett, L. Bradford, A. Brown, D. Duhig, N. Dieke, M. Connolly, Row 3—M. Duke, N. Alexander, L. Dupuis, B. Daves, W. Barber, J. Basham, L. Balsley, L. Bravo, B. Brick, L. Capra. Row 4—L. Peirano, J. Newman, G. Parrott, H. Ng, D. Monasterio, S. Masken, E. Sandelius, J. Rushing, C. Moore, S. Matthews, E. Myall. Row 5—M. Simms, E. Richard, T. Paulson, B. Minahen, F. Marks, D. O'Connor, R. Reelhorn, J. Rasmussen, E. Rice. Row 6—J. Perez, R. Owen, A. Nuss, G. Oliver, M. Sanchez, W. Rothacher, B. May, O. Roberts, R. Moresco.

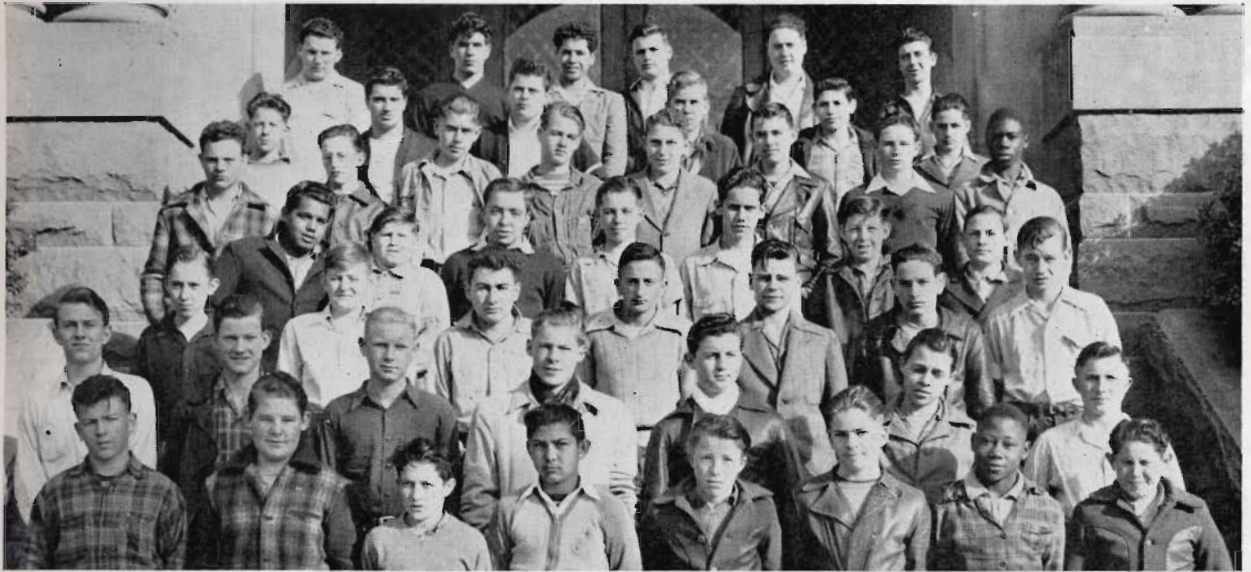
Page Forty-Nine—Group One

Row 1—L. York, A. Willis, V. Nance, B. Randolph, P. Trelut, L. Smith, T. Soudor, B. Woodruff. Row 2—L. Williams, B. Muthart, J. Peterman, M. Sherwood, M. Traversa, C. Rotert, A. Rowley, B. Suttles, K. Rodhouse. Row 3—L. Warren, M. Onito, M. Riley, L. Osborn, L. Telena, P. Murray, H. Taylor, B. Tons. Row 4—G. Weilburg, D. Turney, R. Wright, A. Utter, T. Smith, E. Woodruff, M. Tretheway, B. Vignolo, E. Woody. Row 5—G. Swan, T. Watters, G. Talbot, M. Sayge, T. Selfridge, C. Stockton, L. Shroyer, H. Stewart, F. Toad, R. White. Row 6—L. Thomas, A. Talt, R. Schneider, S. Viavianos, D. Womble, R. Zimmer, B. Waller, W. Wendel, K. Strungfelloue.

Page Forty-Nine—Group Two

Row 1—M. Wunderlick, C. Quinn, D. Schultz, B. Lagorio, G. Sievers, J. Lyman, M. McKay, H. Kessel. Row 2—J. Rose, S. Yost, P. Carlile, C. Remington, E. Stone, M. Schwartz, J. Sandberg, J. Lampitok. Row 3—G. Thomas, N. Mangley, N. Ng, R. Wales, P. Stauteborough, M. Miller, L. Shanks, E. Mar, J. Choi. Row 4—V. Silva, D. Wells, M. Walkott, K. Klein, L. Williamson, M. Moore, L. Wells, G. Avery. Row 5—S. Carlin, J. Fong, R. Drury, R. Barsi, W. Anderson, A. Gauthier, G. Chan. Row 6—F. Dobales, S. Callon, J. Costa, D. Brinkman, R. Ehlers, D. Battilana, D. Bargagliotti, A. Gainza. Row 7—C. Evans, J. Bodz, R. Freeman, J. DiBartolo, J. Fernandez, R. Dessaussois. Row 8—C. Cronon, H. Barone, R. Correno, M. Duggaror, L. Chelli.





FRESHMEN

Page Fifty—Group One

Row 1—F. Gualco, J. Schenone, A. Revillar, A. Lee, D. Stewart, D. Hubble, W. Westenhaver, C. Zeiter. Row 2—J. Toso, P. Hickey, T. Chamness, J. Boyd, D. Setzer, M. Birdwell, F. Klam, S. Rowe. Row 3—H. Rocha, P. Carlile, M. Schnaible, B. Pierce, N. McConnell, V. Hunt, G. Moresco. Row 4—M. Shanda, R. Foppiano, M. Wunderlick, E. Dyer, S. Clinton, M. Mayorga, D. Fernandez. Row 5—J. Mowry, F. Kamp, G. Krutsinger, G. Goldon, W. Halverson, D. Miller, R. Kakebaugh, M. Larson. Row 6—A. Jordim, R. Hoffman, T. Goldsworth, G. Huntalas, D. Mazzelle, H. On, W. Hong. Row 7—R. Guerrero, W. Parsons, H. Pacheco, J. Jenkins, S. Pearson, L. Moresco, G. Kirby. Row 8—K. Pomeroy, J. Peterson, J. Keigley, H. Onithon, B. Norman.

Page Fifty—Group Two

Row 1—B. Stephens, A. Foturos, B. Dickson, S. Fish, B. Francois, M. Brown, V. Gianunzio, M. Baiham. Row 2—W. Churchill, C. DeVerce, M. Corren, J. Bennesten, C. Cruz, H. Harper, D. Burstein. Row 3—F. Wade, LaR. Weborg, L. Thomas, S. Douglass, T. Callegari, M. Fields, G. Flores, M. Enebrad. Row 4—B. Whitson, E. Teller, F. Sperry, N. Denton, F. Spoonamore, B. Hamilton, E. Johnson, P. Ellis. Row 5—A. Stabaugh, T. Warren, J. Wheeler, J. Warren, J. Thienes, D. Wheeler, M. Chalmers, D. Cherrington. Row 6—J. Wood, W. Watts, N. Wilbur, P. Weinstein, J. Henford, E. Davies, N. Clements, E. Vigna. Row 7—C. Cedas, F. Smith, T. Martin, J. Gong, R. Kinser, M. Urrezola.

Page Fifty—Group Three

Row 1—W. Leslie, J. Boyd, C. Burns, A. Brecht, I. Duncan, M. Calvert, S. DeMoss, C. Gibson. Row 2—N. Metzler, M. Guthmiller, G. DalPorto, L. Linkert, W. Jones, M. Fox, J. Bruton, D. Burdick, D. Marks. Row 3—N. Douglas, L. Mayer, DeL.

McCown, F. Bailey, B. Garibaldi, J. Early, J. Fox, M. Manning, M. Gallego. Row 4—R. Shepherd, D. Smith, B. Wales, D. Stevens, W. Wiefel, O. Thompson, D. Thorp, S. Herbert. Row 5—R. Weaver, H. Reusch, J. Wickham, J. Wallis, G. Uebele, L. Valentine, D. Worley, J. Soria. Row 6—E. Sweeney, M. Schmid, J. Prato, J. Richey, F. Wright, C. Shafer, B. Spencer.

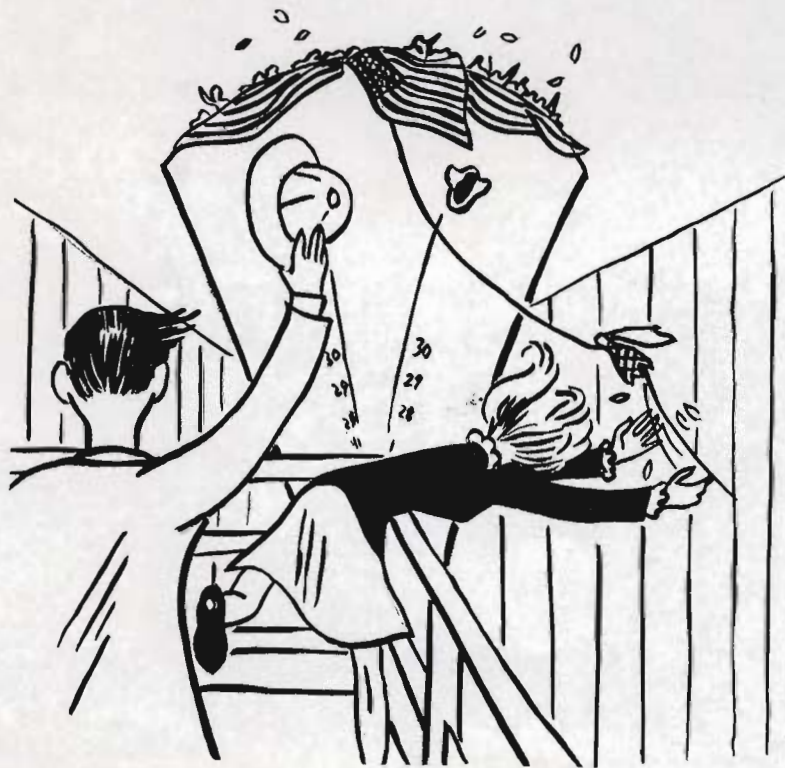
VOCATIONAL

Page Fifty-One—Group One

Row 1—B. Haflick, C. Commons, G. Ellsworth, B. Steine, R. Smith, R. Tenbrook, G. Burton, A. Schmidt. Row 2—C. Williams, G. Duncan, C. Gehmert, E. McMullin, D. Ryan, F. Junker, D. Blake. Row 3—G. Martin, B. Turner, B. Lagrutta, J. Lawrence, R. Elgin, E. Marino, A. Gardner. Row 4—D. Gonzalez, E. Phillips, J. Spears, E. Roehl, D. Chiapale, E. Hall, J. Eggleston. Row 5—J. Madden, R. Stevenson, L. Pearce, L. Mills, L. Perkins, K. Billigmeier, R. Giannecchini, M. Hughes. Row 6—D. Haflich, P. Etcheberry, R. Gobbi, R. Salisbury, M. Abourezk, R. Sanchez. Row 7—P. Hoff, T. Morelli, T. Munoz, J. Harvey, R. Searing, J. Nidiffer.

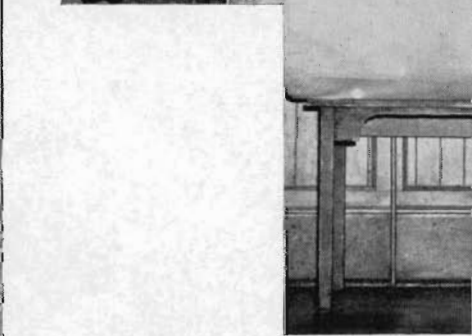
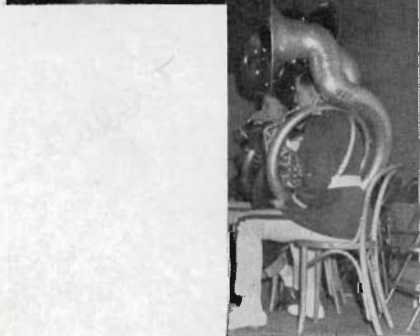
Page Fifty-One—Group Two

Row 1—J. Olcomendy, L. Silva, H. Burg, V. Grijalva, E. Loveday, C. Ellis, E. Wheeler. Row 2—D. Hatch, L. Bothwell, L. Rubino, J. Coffelt, J. Marsh, L. Digiuro. Row 3—J. Nichols, H. Mahaffey, R. Winteroff, E. Euckley, F. Blake, J. Mendiola. Row 4—D. Mandick, M. Alverson, J. Oxnard, T. Beal, W. Stoss, F. Lawrence, LaMarr, D. Riggs. Row 5—K. Beal, S. Smith, V. Wyman, E. Martin, A. Smith, A. Islas. Row 6—W. Jarvis, V. Lawrence, E. Thompson, B. Marsh, F. Gonzales, E. Gorna, D. Blacol, E. Nagel, G. Passegi. Row 7—D. Brookner, J. Armstead, A. Buckels, O. Bailey, J. Gainza, H. Witt, W. Farrow, W. McCabe, E. Molini.



LAUNCHING





The Year In Review

Top, left to right—
 Soldiers entertain
 Rally
 Football awards
 Army speaks
 College show
 Navy speaks

Left, top to bottom—
 Junior Ice Hop
 Band at game
 Graduation
 Blockbuster
 campaign



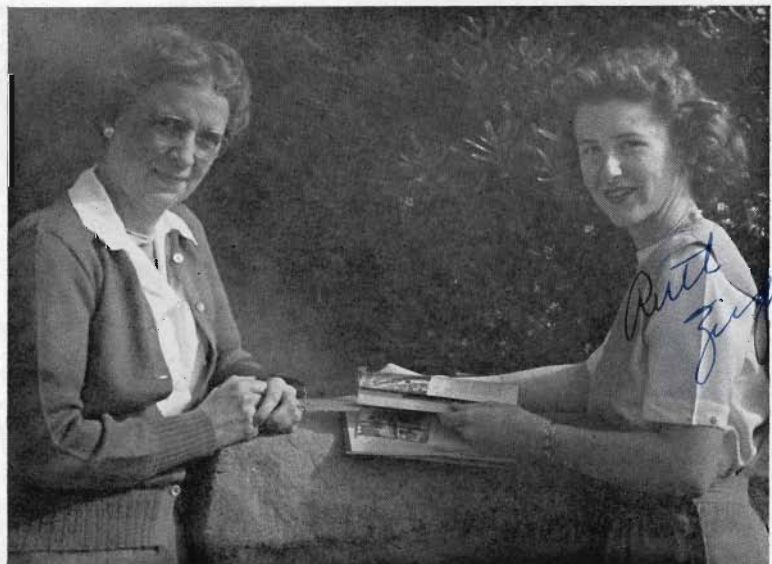
"Down Squad"
C. S. F.

Activities of the Stockton High Chapter of the California Scholarship Federation were greatly curtailed this year due to transportation difficulties and the lack of time. Main events of the club's year were the meeting and program held in the Bungalow for all students who had ever belonged to the club. Membership totals of C.S.F. remained at the usual high standard with 49 members in the fall semester and 56 in the spring. Highest student in the club for the whole year was Yin Gong, who had a grade total of 15 points. Students with 14 points were Robert Mackey, Richard Gibson, Mary Lois Breeden, and Katherine Kosich. Officers for the year were Ruth Ziegler, president; Herta Silzer, vice-president; and Betty Eberhardt, secretary.

Row 1—Yin Gong, Virginia Lee, Helen Vanderkooi, Alice Eiselen, Mary Breeden, Colleen Young, ♀ Loun Cho. Row 2—Betty Griggs, Alberta Vassar, Marie Longacre, Shirley Arthur, Anna Passadore, Joan Arata, Atha Jane Haywood, Pat White. Row 3—Virginia Spino, Elizabeth Renard, Janet Thienes, Pearl Sifford, sponsor; Katherine Kosich, Pat Adams, Nona Bessell, Barbara Nowell. Row 4—Urban Ernst, Phil Pister, Richard Aulwurm, Earldwin Long, Ronald Kidd, Melvin Hoffman, Eugene Early. Row 5—Victor Zeiter, Wing Jew, Chung Cho, Chas. Gulick, Robert Mackey, Donald Stites, Edsel Parsons. Row 6—Paul Barnetch.

Miss Sifford

Ruth Ziegler





Ruth Ziegler

Bob Alling

PUBLICITY

Feature Writers—Patty Lou Peters, Sharon Lewis, and Hazel Colliver look on while Frances Hammill pretends to work.

Hubert Molina, Lynne Jones, and Urban Ernst—hard at work.

For those who have read and enjoyed the past year's "Gat", and also for those on the staff and in News II, we dedicate this page. Last fall the "Gat" office gave birth to a new idea, SHS students raising \$872.43 for a 2-ton bomb to help in the war effort. During the Blockbuster Campaign raffles were held, topped by a college program from COP. At the end of a few months, the goal not quite reached, the "Gat" staff turned the entire amount over to the Red Cross. Shortly before April 1, a special "Razz" edition better known as the Grunt & Tickle came out, containing a scoopful of gossip about students and teachers alike.

Columnist Helen Lapcik checks the new edition, Business Manager Marian Jacobs types, and Willis Fannon and Bob Chapman, sports writers, read exchanges.

Marilyn Nelson and Betty Griggs stand behind Juanita Jissell and George Ladas.



HOW IT'S DONE

Columnist Barbara Bayne has a tip on a "hot" story and she's checking a news source from the Guard and Tackle office.

The story breaks and Associate Editor Betty Griggs does a rewrite job on it.

Albin Bucholz sets the story on the Intertype.

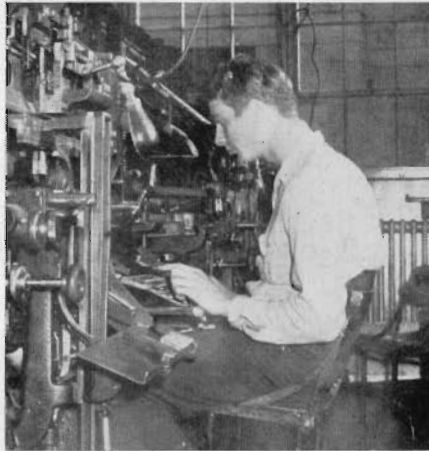
Earl Klein is "rolling" on the old cylinder press.

Reporter Marge Simpson distributes papers.

Exchange Editors Edna Riggs and Georgena Kline look over a couple of "Gats" just off the press.

Girls' sports writer Yvonne Owens seems to be enjoying something — probably her own column.

The "boss", Fall Editor Ruth Ziegler, relaxes — the paper is out for another week.





Adrienne Klump, Betty Griggs, Beverly Jordan
Leland Lutz, Marian Jacobs, Frances Hammill

Helen Lapcik, Pat Peters, Ruth Zeigler
Bob Alling, Mildred Pettey

ANNUAL REPORT

Beverly Jordan

Mr. Adamson



Beset by the war-time gremlins was the hard-working staff of this year's Blue and White. Film and photographer shortages made the fate of the annual very precarious and unpredictable. Many times passersby heard groans of anguish issuing from the notorious Publications Office when news came that the film had been double exposed or that it had rained into the camera. But little incidents like these served to make life more interesting for the staff, and by hook or by crook they managed to get the book finished.

Special credit is due Bob Alling, Ruth Ziegler, Helen Lapcik, Betty Griggs, John Totten, and Marian Jacobs. The "real burden" of getting out the 1944 Blue and White rested on their capable shoulders.