

# JUNE



*Marie Abdallah*

ABDALLAH, MARIE—Academic; Reporter on G. & T. Fall '40; Les Cadets, Pan Pacific Clubs.



*Louis Airola*

ABDALLAH, PETER—Academic; 9th Place in California History Contest Spr. '59.

ADAMS, SUSAN—Academic; Quill & Scroll Spr. '41; Reporter G. & T. Fall '40; Spr. '41; Christian Students' Luncheon Club, Spanish Club; Attended Manteca High School Fall '37, Spr. '38.

AGARI, ELSIE—Academic; Honor Scholarship Spr. '58; Fall '58; Spr. '59; Reporter for G. & T. Spr. '41; Latin, Japanese Clubs.



*Marie Agari*

AIROLA, LOUIS—Commercial; Grad. 3½ Yrs.; Italian Club.

ALBERTSON, NATILEE—Academic; Cast of "Rhapsody in Six Raps"; Troubadours '40; Playcrafters, Les Cadets, Les Mousquetaires, Pro Musica Clubs.

ALDRIDGE, NADEEN—Academic; Old English "S" Fall '59-Spr. '41; Sec. G. A. A. '59; Vice President '40; Basketball, Baseball, Hockey Awards; Les Cadets, Tennis, Les Mousquetaires Clubs.

ALIMBINI, ALBERT—Commercial; Grad. 3½ Yrs.



*Marie Arbanasin*

ARAO, MARIKO—Commercial; Honor Scholarship 7 Sem.; Japanese Club.

ARBANASIN, AGNES—Commercial; Business Manager G. & T. Fall '40; Student Control Fall '40.

ASANO, HIDENORI—Academic.

AZEVEDO, ROLAND—Vocational.



*LaVerne Babcock*

BABCOCK, LaVERNE—Academic; Attended St. Mary's High School '57; Los Amapolas, Tennis, Pro Musica Clubs.

BACIGALUPI, LENA—Academic; Honor Scholarship; G. A. A. Awards in Basketball, Baseball; Italian Club; Awards at Italian Night Spr. '59; Spr. '40.

BAHL, MARGARETHA—Academic; German Club.

BAKER, GORDON—Academic; Latin Club.



*Joe Balcao*

BALCAO, JOE—Commercial; Block J. V. Football; J. V. and Block 'S' in Basketball.

BARLICH, ROBERT—Academic; Eraser T-Square Club Spr. '41; German, Science Clubs.

BARNES, ALAN—Academic; Latin Club.

BASCOM, BETTY LEE—Academic; Chorus Fall '58; German, Girls' Science, Tennis Clubs.



*Betty Bascom*

BASCOM, RAY—Academic; Custodian Spr. '59; Comm. Athletics Fall '59; 4 Ribbons in Cross Country and Inter-Class Swimming Meet.

BEANLAND, LEONARD—Academic; Honor Scholarship 2 Sem.

BEATIE, BOB—Academic; Boys' Science Club.

BEAUCHEMIN, DOUGLAS—Academic; Chorus Spr. '41; Spanish Club.

BEHNEY, HARRY—Academic.

BERLINGEN, BETTY—Academic; Girls' Glee Spr. '41; Chorus Fall '40; Les Cadets, Les Mousquetaires Clubs.

BERNARD, JUNE—Academic; Girls' Glee Fall '40; Attended Hamilton Jr. High School in Fresno, California, Fall '37-Fall '40.

BEVILAQUA, ADOLPHI—Academic; Italian Club.



*Peter Abdallah*



*Susan Adams*



*Elsie Agari*



*Natilee Albertson*



*Nadeen Aldridge*



*Albert Alimbini*



*Agnes Arbanasin*



*Hidenori Asano*



*Roland Azavedo*



*Lena Bacigalupi*



*Margaretha Bahl*



*Gordon Baker*



*Robert Barlich*



*Alan Barnes*



*Betty Bascom*



*Leonard Beanland*



*Bob Beatie*



*Doug Beauchemin*



*Betty Berlingen*



*June Bernard*



*Adolphi Bevilacqua*



# GRADUATES



*Beverly Billings*



*Lily Mae Boyden*



*Thyllis Britt*



*Walter Burke*



*Julianne (Bivelli)*



*Vanadeane Carroll*



*Della Castaldo*

BILLINGS, BEVERLY—Commercial; Vice Pres. Old English "S" Fall '40; Reporter for Blue & White Staff Fall '37-'38-'39; Etiquette Club.

BLAIR, DONALD—Academic; Scaler T-Square Club Fall '40; German, Science Clubs.

BOCEK, FRANCES—Academic; Quill & Scroll '40; Spr. '41; Editor of Blue & White Fall '40; Spr. '41; G. A. A. Awards in Tennis and Basketball; Activities and Girls' Sports Editor of Blue & White Fall '39, Spr. '40; Reporter on G. & T. Fall '40; Spr. '41; Tennis, Pan Pacific, German Clubs.

BONINI, DORA—Commercial.

BOYDEN, LILY MAE—Academic; G. A. A. Awards in Tennis; Associated Negro Students, Girls' Science, Tennis, Pro Musica Clubs; Attended Girls' High School Fall '37, San Francisco, Calif.

BOYER, THEDA—Commercial.

BRADLEY, BETTY—Academic; Attended Manteca High School, Manteca, California Fall '38-'39.

BRANDON, GEORGE—Academic; 2 Sem. Honor Scholarship; 1st Orch. '38-'41; String Ensemble Spr. '39-Spr. '41; Latin Club.

BRITT, PHYLLIS—Academic; 1st Orch. '39-Spr. '40; Les Mousquetaires, Les Cadets Clubs.

BROTHERS, DORIS—Academic; Latin, Pan Pacific, Pro Musica Clubs.

BRUNS, DARRELL—Academic.

BURGESS, WALTER—Academic; G. & T. Staff; Attended Modesto High School '37-'40 at Modesto, California.

BURKE, WALTER—Academic; Sec. Quad C Hi-Y Spr. '41; Aeronautics Club.

BURNS, BARBARA—Academic; Girls' Student Control Spr. '41; Tri-Y, Spanish Clubs.

CALCAGNO, EUGENE—Vocational.

CALLISON, WANDA—Academic; Spanish, Pan Pacific Clubs; Grad. 3 1/2 Yrs.

CALVELL, JULIANNE—Academic; Grad. 3 1/2 Yrs.; G. A. A. Awards in Baseball; Art Editor of G. & T. Fall '40-Spr. '41; Co-Art Editor of Blue & White Fall '40-Spr. '41; Attended St. Mary's High School Fall '37; 2nd Prize in Art Contest "Youth and America"; Italian Club.

CAMPDONICO, WALLACE—Academic; Sgt.-at-Arms Playcrafters Spr. '41; Cast of "Neighbors" Spr. '41; Cast of "Oh Imogene!" Spr. '41; Italian, T-Square Clubs.

CANNON, JEAN—Academic.

CAREY, MARJORIE—Commercial.

CARROL, VANADEANE—Academic; Pan Pacific, Tri-Y, Tennis, Les Cadets Clubs.

CARTER, CLARENCE—Academic; Band Spr. '40-Spr. '41; Attended Greenville High School, Greenville, California Fall '38-'39.

CARTWRIGHT, RUBY—Commercial; Girls' Glee Spr. '41; Attended Manteca Union High School '37-'38.

CASSELL, BARBARA—Academic; Sec. Christian Students' Luncheon Club Spr. '41; Spanish Club; Attended Manteca High School, Manteca, California Spr. '39.

CASTALDO, DELLA—Commercial; Vice Pres. Old English 'S' Spr. '41; Old English 'S' in Girls' Sports; Girls' Glee Spr. '41; Sgt.-at-Arms Italian Club Spr. '41.

CATTERALL, REBA—Academic; Spanish Club; Attended Willits Union High School Fall '37-Spr. '38; King City Union High School Fall '38-Spr. '39; Attended First Annual Girls' State History Meeting at Grant Union High School Spr. '40.

CERRI, JOHN—Academic; Italian Club.

CHAMBERLIN, BOB—Academic.



*Donald Blair*



*Frances Boak*



*Dora Bonini*



*Theda Boyer*



*Betty Jane Brothers*



*George Brandon*



*Doris Brothers*



*Darrell Bruns*



*Walter Burgess*



*Barbara Burns*



*Eugene Calcagno*



*Wanda Callison*



*Wallace Campdonico*



*Jean Cannon*



*Marjorie Carey*



*Clarence Carter*



*Ruby Cartwright*



*Barbara Cassell*



*Della Castaldo*



*John Cerri*



*Bob Chamberlin*



# JUNE



*Jane Champreux*



*Fred Clark*



*Marion Coffeenberry*



*Phyllis Cook*



*Kenneth Crawford*



*Jim Beaver*



*Dorothy De Soto*

CHAMPREUX, JANE—Academic; Les Cadets, Les Mousquetaires Clubs.

CHRISLU, JEAN—Commercial; Italian, Etiquette Clubs; Red Cross Representative.

CHRISTOPHER, JAMES—Academic; Attended Commerce High School, San Francisco, California '38-'39; Fresno High, Fresno, California '39; Balboa High School, San Francisco, California '40.

CHURCHILL, JOANN—Academic; Pan Pacific, Christian Students' Luncheon Clubs.

CLARK, FRED—Academic; Block 'S' in Basketball; Block 'S' in Track; Cast of "Rhapsody in Six Raps"; Spanish Club.

CLARK, NORMAN—Vocational; Pres. Auto Electric Class Fall '40.

CLARK, TED—Academic; Aeronautics, Boys' Science Clubs.

COFFENBERRY, MARYLOU—Academic; 5 Sem. Honor Scholarship; Christian Students Luncheon Club; Attended Butte Valley High School, Dorris, California Fall '37-'39

COLLIVER, AVA JUNE—Academic; 4 Sem. Honor Scholarship; Les Cadets, Les Mousquetaires.

CONARD, BOB—Academic; Sec. Trojan Hi-Y Fall '40; Vice-pres. Spr. '41; Comm. of Induction; Hi-Y Spr. '40; Member Board of Governors Pan Pacific Club Fall '40; Comm. of Organizations Spr. '41; Pan Pacific, Pro Musica, Boys' Science Clubs.

CONAWAY, HARRY—Academic; Student Body President Spr. '41; 2 Block 'B's' in Track; Block 'S' in Track; Stockton Hi Round Table, Jr. Rotarian Clubs.

COOK, PHYLLIS—Academic; Attended Yreka High School, Yreka, California Fall '37-Spr. '39.

COONEY, JEAN—Academic; Spanish Club.

CORREIA, MARIE—Commercial; Etiquette Club; Student Control Fall '40; Spr. '41.

COSTA, DOLORES—Academic; Troubadours; Attended Erasmus High School, Brooklyn, New York Fall '37; Latin, Italian Clubs.

CRAWFORD, KENNETH—Academic; Twin Falls High School, Twin Falls, Idaho '37; Hailey High School, Hailey, California '38; Bellevue High School, Bellevue, Idaho '39.

DAVIS, ALICE—Academic; Troubadours; Attended San Leandro High School, San Leandro, California Fall '37; Pro Musica Girls Science Clubs.

DEAVER, JIM—Academic; Pan Pacific, Spanish Clubs.

DELGADO, COLITA—Commercial; Sec. Filipino Club Fall '39; Sgt.-at-Arms Spr. '38.

DELLAMARIA, RUBY—Commercial; Lieut. Band Fall '40; Band Fall '38-Spr. '41.

DENNIS, ROBERTA—Academic; Associated Negro Students' Pres. Fall '40-Spr. '41; G. A. A. Tennis Awards; Girls' Science, Tennis, Pro Musica.

DE SOTO, DOROTHY—Commercial; Student Control Spr. '39; Student Council Spr. '40.

DE SPAIN, JUNE—Academic; Attended Brownville High School, Brownville, Texas; Palo Alto High School, Palo Alto, California.

DE WITT, MARGERY—Academic; Pro Musica, Pan Pacific Clubs; Attended Olds High School, Iowa Fall '37-Spr. '38; Oskaloosa High School, Iowa Fall '38; Morning Sun High School, Iowa Spr. '39.

DE YOUNG, HARLAND—Academic; Spanish, Christian Students Luncheon Clubs.



*Jean Chrislu*



*Jim Christopher*



*Grace Churchill*



*Norman Clark*



*Ted Clark*



*Marie Coffee*



*Ava June Colliver*



*Bob Conard*



*Harry Conaway*



*Jean Cooney*



*Marie Correia*



*Dolores Costa*



*Kenneth Crawford*



*Harold Crowden*



*Alice Davis*



*Colita Delgado*



*Ruby Dellamaria*



*Roberta Dennis*



*June de Spain*



*Margery de Witt*



*Harland de Young*



# GRADUATES



*Jimmie Doi*



*Alene Dumas*



*Mary Louise Elissondoberry*



*Thomas Espineda*



*Jeanne Fayette*



*Rose Fong*



*Milton French*

DOI, JIMMIE—Academic; 5 Sem. Honor Scholarship; Sec. Honor Scholarship Fall '59; Pres. Japanese Club Fall '40; German, Latin, Round Table Clubs; 2nd Place in Calif. History Contest.

DOI, MAY—Commercial; 2 Sem. Honor Scholarship; Japanese Club.

DOWNS, BETTE—Academic; Girls' Glee, Chorus; Les Cadets, Pro Musica Clubs.

DRESSEL, BRUCE—Academic; Sgt.-at-Arms Spanish Club Spr. '41.

DUMAS, ALENE—Commercial; C. A. A. Awards in Baseball, Basketball; Etiquette Club.

DUNCANSON, BETTE—Academic; Girls' Glee, Chorus; Attended Wenatchee High School, Wenatchee, Washington '57-'58.

DUNTON, HOWARD—Vocational.

ELIAB, FELIX—Commercial; Sec. Filipino Club Fall '59; Attended Galt Union High School Fall '57.

ELISSONDOBERRY, MARY LOUISE—Academic; Attended Los Banos High School, Los Banos, Calif. '57-'59; Les Mousquetaires Club.

ELLIOTT, HALTON—Academic.

ENGLER, ARDIS—Commercial; G. A. A. Award in Baseball; Etiquette Club; Winner of English Essay Contest Spr. '59.

ERRECART, DOMINIC—Commercial; Intramural Baseball Team.

ESPINEDA, THOMAS—Academic.

ESTALLE, LEONORE—Academic; Attended Schnieder Vocational High School Fall '40.

FANSHIER, CORA—Academic; Girls' Glee; Les Cadets, Les Mousquetaires Clubs.

FAWCETT, BOB—Academic; Sec. Aeronautics Spr. '41; Hi Y, Club.

FAYETTE, JEANNE—Academic; 7 Sem. Honor Scholarship; Gold Seal Bearer; Round Table Club; Attended Livermore Union High School, Livermore Calif. Fall '57-Spr. '40.

FISH, ELEANORE—Academic; Grad. 3/2 Yrs. 1 Sem. Honor Scholarship; G. & T. Staff Fall '40-Spr. '41; Cast of "Neighbors"; Latin Club.

FISH, RAY—Academic; Attended Roosevelt High School, Seattle, Washington '58-'59.

FLEMING, ELLIOT—Academic; Latin Club.

FONG, ROSE—Academic; 5 Sem. Honor Scholarship; Quill & Scroll Fall '40-Spr. '41; Financial Chairman Chinese Club Spr. '40; Pan Pacific, Spanish Clubs.

FRANKS, JIM—Academic; 12B Pres. Fall '40; Photographer for Blue & White Fall '59-Spr. '40; Editor of G. & T. Cub Edition; Reporter G. & T. Fall '59-'40.

FRENCH, BOB—Academic; 4 Block 'S's' in Football.

FRENCH, LOCAN—Academic; Block "S" Society; Pres. Pan Pacific Fall '40-Spr. '41; Block 'B'; Block 'S' in Swimming; Attended Claremont Jr. High School, Oakland, California Spr. '37.

FRENCH, MILTON—Vocational; 'B' Basketball Manager '58-'59; Varsity Manager '40-'41; Quad "C", Hi-Y Clubs.

FROELIGER, PAUL—Academic; Pro Musica, Travel Clubs.

FUHRMAN, PHYLLIS—Academic; Les Cadets Les Mousquetaires Clubs.

FUJIHARA, HERBY—Commercial; Attended Elk Grove Union High School, Elk Grove, Calif. '56-'57, Japanese Club.



*Mary Doi*



*Bette Duncan*



*Bruce Dressel*



*Bette Duncanson*



*HOWARD Duntun*



*Felix Eliab*



*Halton Elliott*



*Ardis Engler*



*Dominic Errecart*



*Leonore Estalle*



*Cora Fanshier*



*Bob Fawcett*



*Eleanore Fish*



*Ray Fish*



*Elliot Fleming*



*Jim Franks*



*Bob French*



*Jacau French*



*Paul Froeliger*



*Phyllis Fuhrman*



*Fujihara, Herby*



# JUNE



*Dick Fujii*

FUJII, DICK—Commercial; Sgt.-at-Arms Japanese Club Spr. '59.



FUJII, FUSAE—Academic; Chorus; Japanese, Pro Musica, Pan Pacific, Spanish Clubs.

*Fusae Fujii*

FUJISAKI, LILLIAN—Academic; Japanese, Spanish, Pan Pacific Clubs.



*Betty Fulller*

FULLER, BETTY—Academic.

GALE, EARLEEN—Academic; Attended Petaluma High School, Petaluma, Calif. '57-'59.

*Earleen Gale*

GALLAGHER, FAY—Commercial; Chorus, Girls' Glee; Pro Musica, Pan Pacific Clubs.

GARCIACELAY, ANGELINA—Commercial; Vice-Pres. Los Cucurachas Club Fall '58; Pres Spr. '59; Etiquette Club; Student Control '59.



*Angelina Garciacelay*

GARDELLA, ANTOINETTE—Academic.

GARDELLA, MARJORIE—Academic; Pro Musica, Tri-Y, Italian Clubs.



*Gloria Garibaldi*

GARIBALDI, GLORIA—Academic; Pro Musica, Italian Clubs; Award in Italian Night Spr. '59.

GAUTHIER, WARREN—Academic; T-Square Club.

GERMAIN, LAWRENCE—Academic; 1 Sem. Honor Scholarship; Pres. German Club Fall '40-Spr. '41; 4th Prize California History Contest Spr. '58; 1st Prize United States History Contest Spr. '40.



*Frances Gibbons*

GIBBONS, FRANCES—Academic.

GIBSON, JUANITA—Commercial; Attended Byng High School, Ada, Oklahoma '57.

GIPNER, BILL—Vocational.

GOMES, AUGUSTINE—Commercial.

GOMES, WILLIAM—Academic; Pan Pacific, Spanish Clubs.



*Hattie Goodman*

GOODMAN, HATTIE—Commercial; Attended Randsburg High School, Randsburg, California '57-Spr. '58.

GOODMAN, STEVE—Academic; T-Square, German Clubs.

GORMLEY, ELLA—Academic.

GOSS, GENEVIEVE—Academic; Red Cross Representative; Pro Musica, Les Cadets, Les Mousquetaires Clubs. Speaker on Armistice Day Program Fall '40; Speaker on Lincoln's Day Program Spr. '41.



*Genevieve Goss*

GRAVES, ANGA LEE—Academic; Les Cadets Club.

GRONDONA, LORENE—Academic; 1 Sem. Honor Scholarship; Girls' League Pres. Spr. '41; Band Spr. '58; Italian Club, Social Service, Pro Musica; Tri-Y Clubs, Student Council; Bronze Medal in Italian.

GUILIANI, ALLEN—Commercial; Block 'B, J. V. Block in Football.

GUTHREY, DEAL—Vocational.

GWERDER, LOUIS—Academic; German, Pan Pacific Boys' Science Clubs.

HAHN, GWENDOLYN—Academic; Pro Musica; Orchestra; Prizes in Band and Orchestra Concert.

HAHN, VIOLA—Academic.



*Fusaie Fujii*



*Lillian Fujisaki*



*Betty Fulller*



*Fay Gallagher*



*Angelina Garciacelay*



*Antoinette Gardella*



*Gloria Garibaldi*



*Warren Gauthier*



*Lawrence Germain*



*Juanita Gibson*



*Bill Gipner*



*Augustine Gomes*



*Hattie Goodman*



*Steve Goodman*



*Ella Gormley*



*Anga Lee Graves*



*Lorene Grondona*



*Allen Guiliani*



*Louis Gwerder*



*Gwen Hahn*



*Viola Hahn*



# GRADUATES



*Sam Hall*



*Nancy Harbert*



*Ola Hartin*



*ChiyeKa Hattori*



*Darrell Hazelbaker*



*Ruth Helpenstel*



*Joe M. Herzog*

HALL, SAM—Academic; Quill & Scroll Fall '40-Spr. '41; J. V. Block in Football; Sports Editor of G. & T. Fall '40; Assistant Sports Editor Spr. '41; Cast of "Skidding"; Speaker on Washington-Lincoln Program Spr. '41; Jr. Red Cross Chairman Spr. '41; Latin, Quill & Scroll, Debate Clubs.  
 HANNAY, EDWARD—Academic.  
 HANSEN, GLORIA—Academic; Grad. 3½ Yrs.; Tennis, Spanish Clubs.  
 HANSEN, RICHARD—Academic.

HARBERT, NANCY—Academic; 3 Sem. Honor Scholarship; Program Chairman Junior Music Club Fall '38-Spr. '39; Pres. Junior Music Club Fall '39-Spr. '40; Pres. Orch. Spr. '40-Fall '40; Orch. Fall '37-Spr. '41; String Ensemble Fall '40-Spr. '41; String Quartet Fall '37-Spr. '38; Concert Mistress National High School Orchestra in Los Angeles Spr. '40; Music Festival Orchestra Spr. '39-Spr. '40-'41; Violin Solo for Teachers' Institute with String Ensemble Fall '40; Soloist with String Ensemble at Western Music Educators' Conference in San Jose Spr. '41; Latin Club.  
 HARPER, RALPH—Academic.  
 HARR, DOROTHY—Commercial.  
 HARROLD, CLOTILDA—Academic; Band '38-Spr. '41. Pro Musica, Italian Clubs.

HARTIN, OLA—Academic; Latin, German, Pro Musica, Tennis Clubs.  
 HARTLEY, LOIS—Commercial; G. A. A. Basketball Award.  
 HASKELL, BEVERLY—Commercial; 1 Sem. Honor Scholarship; Old English "S"; Vice-Pres. 11B Class Fall '39; Vice-Pres. 12B Class Fall '40; G. A. A. Baseball Award; National Clerical Typing Certificate.  
 HATANAKA, BEN—Academic; Pro Musica; Pan Pacific, Japanese Clubs.

HATTORI, CHIYEKO—Academic.  
 HATTORI, MITSUKO—Academic; 3 Sem. Honor Scholarship; Japanese, Spanish, Pan Pacific Clubs.  
 HATTORI, YUKIKO—Academic.  
 HAWLEY, LA VERNE—Academic; Band; Girls' Glee; Cast of "Rhapsody in Six Raps".

HAZELBAKER, DARRELL—Academic; Block 'B' in Football.  
 HEAD, MELVIN—Academic.  
 HEDBURG, HARRY—Academic; Attended Fresno High School, Fresno, Calif. Fall '39-Spr. '40.  
 HEDSTROM, WARREN—Vocational; Vice-Pres. Christian Students' Luncheon Club Spr. '40; Pres. Fall '40; Intertype Operator '39-Spr. '41.

HELLENSTEL, RUTH—Commercial; Business Manager G. & T. Spring '41; Orch.; Band; Student Control Spr. '41.  
 HENDRIX, JACIE—Academic; "Rhapsody in Six Raps"; Pro Musica.  
 HERMAN, MARVIN—Academic; Band Fall '38-Spr. '41; Pro Musica.  
 HERNDON, JIM—Academic; Spanish Clubs.

HERZOG, JOE—Academic; Band Spr. '38. '41; Pro Musica, German Clubs.  
 HEWLETT, STANLEY—Academic; Spanish Club.  
 HICKEY, LAURA LEE—Academic; Spanish Club.  
 HILL, CAROL—Academic; Spanish Club.



*Edward Hannay*



*Gloria Hansen*



*Richard Hansen*



*Ralph Harper*



*Dorothy Harr*



*Clotilda Harrold*



*Lois Hartley*



*Beverly Haskell*



*Ben Hatanaka*



*Mitsuho Hattori*



*Yukiko Hattori*



*LaVone Hawley*



*Mel Head*



*Harry Hedburg*



*Warren Hedstrom*



*Jacie Hendrix*



*Marvin Herman*



*Jim Herndon*



*Stanley Hewlett*



*Laura Lee Hickey*



*Carol Hill*



# JUNE



HINDERLITER, ELAINE—Commercial.  
 HINKLE, DORIS—Academic; Pan Pacific, Spanish Clubs; Attended Elk Grove High School, Elk Grove, Calif. '58.  
 HINMAN, MARGIE—Academic; Sec. Pan Pacific Club Spr. '59; Red Cross Representative; Attended Breakenridge High School, San Antonio, Texas Fall '58; Sacramento High School, Sacramento, Calif. Fall '57.  
 HIRATA, MINEKO—Academic; 2 Sem. Honor Scholarship; Japanese, German Clubs.



HISATOMI, YOSHIYE—Academic; Japanese Club.  
 HOCKING, MARY LOU—Commercial; Attended Grass Valley High School Fall '57; Oroville Union High School, Spr. '58-Spr. '40.  
 HOFFMAN, ARDATH—Academic; Cast of "Neighbors"; Playcrafters, German Clubs.  
 HOFFMAN, FRANCES—Commercial; G. A. A. Paddle Tennis Award.



HOGAN, TOM—Academic; Custodian Fall '58; Student Control.  
 HOIT, CAROL—Academic; Pan Pacific, Spanish Clubs.  
 HOLLAND, DORIS—Commercial; G. A. A. Paddle Tennis Award.  
 HOOPES, GORDON—Academic; T-Square, Aeronautics Clubs. Attended Manteca High School, Manteca, Calif. Fall '57.



HOPKINS, RUTH—Commercial; Pres. Talent Club Spr. '40; Student Control Fall '40.  
 HORTON, JEAN—Commercial; Vice-Pres. Tennis Club Fall '59-Spr. '40; G. A. A. Tennis Cup in Girls' Doubles.  
 IKAWA, JULIA—Academic.  
 IKEMOTO, TED—Academic; Sgt.-at-Arms Spanish Club Fall '58-Spr. '50; Pan Pacific, Boys' Science, Japanese Clubs.



INOUE, FUSAE—Academic; Japanese Club.  
 ISHII, FRANKLIN—Academic; Block C in Basketball; 2 Gold Basketball Awards; Japanese, Spanish Clubs; Attended Polytechnic High School, San Francisco, Calif. Spr. '58.  
 ITAYA, SHIZUKO—Academic; Japanese, Pan Pacific Clubs.  
 ITO, EMIKO—Academic; 4 Sem. Honor Scholarship; Japanese, Spanish Clubs.



ITO, MASAO—Academic; Pan Pacific, Japanese, Tennis Clubs.  
 IWATA, MICHIE—Academic; 1 Sem. Honor Scholarship; Japanese, Spanish Clubs.  
 JACKSON, GEORGE—Academic; Pan Pacific, Spanish Clubs.  
 JARVIS, JIM—Vocational; Attended Santa Rosa High School, Santa Rosa, Calif. '57.



JENKS, GERALDINE—Commercial.  
 JOHNSTON, FRED—Academic; 2 J. V. Blocks, Block 'S' in Football; Attended San Rafael Military Academy, San Rafael, Calif. '58.  
 JONES, LENORA—Academic; Pro Musica, Spanish Clubs.  
 JONES, RICHARD—Academic; Pro Musica, Band, Latin, Aeronautics Clubs; Attended Liberty Union High School, Brentwood, Calif. Fall '57-Spr. '58.



*Doris Hinkle Margie Hinman Mineko Hirata*

*Mary Lou Hocking Ardath Hoffman Frances Hoffman*

*Carol Hoyt Doris Holland Gordon Hoopes*

*Jean Horton Julia Ikawa Ted Ikemoto*

*Franklin Ishii Shizuko Itaya Emiko Ito*

*Michie Iwata George Jackson Jim Jarvis*

*Fred Johnston Lenora Jones Rick Jones*

*Elaine Hinderliter*

*Yoshie Hinatomi*

*Tom Hogan*

*Ruth Hopkins*

*Fusae Inouye*

*Masao Ito*

*Geraldine Jenks*



# GRADUATES



*Kiyoko Kajita*

KAJITA, KIYOKO—Commercial.

KANEMOTO, FRANCES—Academic; Pro Musica; Japanese, Pan Pacific Clubs.

KARIM, DURANEY—Commercial; Pro Musica; Italian Club.

KELLER, BEN F.—Academic; Latin Club.

KELLEY, CLYDE—Academic; Orchestra; Italian, Pro Musica Clubs.

KERR, KENNETH—Academic.

KESTIN, ROBERT—Academic.

KING, MARGARET—Academic; Latin, Christian Students' Luncheon Clubs.

KIPPING, GERHARD—Commercial; Attended Sacramento High School, Sacramento, Calif. Fall '40.

KITAGAWA, HELEN—Academic; Pro Musica; Japanese Club.

KOMURA, RICHARD—Academic.

KOPP, RUTH—Commercial.

KRAFFT, ELWIN—Academic; 1 Sem. Honor Scholarship; Block 'S' Society; Block 'B', Block 'S' in Track; 1st Place in Intermural Track.

KRAFT, AILEEN—Commercial.

LADAS, KATHRYN—Academic; 6 Sem. Honor Scholarship; Gold Seal Bearer; Spanish, Round Tablet Clubs; Attended Commerce High School, San Francisco, Calif. '57-'58.

LAGOMARSINO, ELEANOR—Commercial; Italian Club.

LA MOINE, KEITH—Academic; Sec. 12B Class Fall '40; Sec. German '50-'40; Comm. of Records Spr. '41; Cast of "Lil' Abner" Spr. '41; Orchestra; Pro Musica; Boys' Science Clubs.

LANGDON, BARBARA—Academic; Tri-Y, Spanish, Playcrafters' Clubs.

LARKIN, DANNY—Academic; Attended Roosevelt High School, Honolulu.

LEARY, JIMMIE—Academic.

LEE, EDNA—Commercial; Chinese Club.

LEWIS, JACQUELINE—Academic; G. A. A. Hockey, Baseball Awards; Latin, Girls' Science Clubs. Attended Mariposa High School, Mariposa, Calif. '57.

LINCOLN, LARRY—Academic; Grad. 3½ Yrs.; Band.

LLOYD, DONNIE—Commercial; G. A. A. Basketball Award.

LOOSER, CLARENCE—Commercial.

LOUIE, KATHERINE—Academic; Spanish, Chinese Clubs.

LOW, HING—Academic.

LYON, EVELYN—Academic; Spanish Club.



*Frances Kanemoto*



*Duraney Karim*



*Ben F. Keller*



*Clyde Kelley*



*Bob Kestin*



*Margaret King*



*Helen Kitagawa*



*Richard Komura*



*Ruth Kopp*



*Aileen Kraft*



*Kay Ladas*



*Eleanor Lagomarsino*



*Barbara Langdon*



*Danny Larkin*



*Jimmie Leary*



*Jacqueline Lewis*



*Larry Lincoln*



*Donnie Lloyd*



*Katherine Louie*



*Hing Low*



*Evelyn Lyon*



*Clyde Kelley*



*Gerhard Kipping*



*Elwin Kraft*



*Keith LaMoine*



*Edna Lee*



*Clarence Looser*



# JUNE



*Guy McElhany*

McELHANY, GUY—Academic; Spanish Club.

McFADDEN, CATHERINE—Commercial.

McGEE, FRANCES—Academic; Vice Pres. Los Gauchos Club Spr. '40; Sec. Treas. Spr. '41; Pan Pacific Club; Student Control Spr. '41.

McLVAIN, LUCILLE—Academic; Pro Musica; Spanish Club; Attended Tracy High School, Tracy, Calif. '37-'38.

McNAMARA, ANN—Academic; Grad. 3½ Yrs.; Latin, Social Service Clubs.

MacGARVIE, CHARLOTTE—Academic; Latin Club.

MADRID, FRANK—Vocational.

MADRID, HERMAN—Vocational.

MAGGS, ELEANOR—Academic; Sec. Treas. Social Service Club Fall '40-Spr. '41; Latin, Tri-Y Clubs.

MAGNUSON, DOROTHY—Academic; Latin Club.

MAGNUSON, PHYLLIS—Academic; 1 Sem. Honor Scholarship; Orch.; Orch. Treas. '40; Orch. Sec. '41; String Ensemble; Member of National High School Orchestra in Los Angeles Spr. '40; Pro Musica; Attended Modesto High School; Modesto Calif. Fall '37.

MAKISHIMA, RUTH—Academic; Japanese Club.

MANUEL, EDWIN—Academic.

MARCHETTI, ADOLPH—Academic; Blue & White Staff Spr. '40; Senior Editor Blue & White Fall '40-Spr. '41; Latin, Boys' Science Clubs.

MARCHETTI, MARIO—Commercial; Italian Club.

MARCHINI, ELMO—Academic; Italian Club.

MARRELLO, ARTHUR—Commercial; Italian Club.

MARSDEN, AUDREY—Commercial; Vice Pres. Playcrafters' Club Fall '40; Cast of "Extravaganza"; Costume Mistress for "The Third Floor Back"; Cast of "Neighbors"; Spanish, Talent Clubs.

MARSDEN, MARGOT—Academic; Sec. Playcrafters Spr. '41; Cast of "Neighbors"; Cast of "He Who Gets Slapped"; Talent Club.

MARSH, MARY ELLA—Commercial; Red Cross Representative; Etiquette Club.

MARTENS, BOB—Academic; Pro Musica; Debate Club; Attended Livermore High School, Livermore, Calif. '37-'38.

MARTIN, FLORENCE—Academic; Spanish, Pan Pacific, Tri-Y Clubs.

MARTIN, JEAN—Commercial; Grad. 3½ Yrs.; 1st Prize Art Contest.

MAURER, BERT—Academic.

MAYEDA, THOMAS—Academic; Japanese Club.

MEAD, BILL—Academic; Block "S" in Tennis; Co-holder of '40 C. I. F. Doubles Title with Chet Covey.

MENDOZA, MINNIE—Commercial.

MERRITT, JAYNNE—Academic; Pro Musica, Chorus; Attended Bennett County High, Martin, South Dakota, Fall '37-'38; Attended Petaluma High School, Petaluma, Calif. Fall '39.



*Catherine McFadden*



*Frances McGee*



*Lucille McLvain*



*Ann McNamara*



*Charlotte MacGarvie*



*Frank Madrid*



*Herman Madrid*



*Eleanor Maggs*



*Dorothy Magnuson*



*Phyllis Magnuson*



*Ruth Makishima*



*Edwin Manuel*



*Adolph Marchetti*



*Mario Marchetti*



*Elmo Marchini*



*Arthur Marrello*



*Audrey Marsden*



*Margot Marsden*



*Mary Ella Marsh*



*Bob Martens*



*Florence Martin*



*Jean Martin*



*Bert Maurer*



*Thomas Mayeda*



*Bill Mead*



*Minnie Mendoza*



*Jaynne Merritt*



# GRADUATES



*Norma Meyers*



*Jay Miller*



*Betty Morgan*



*Sonoye Morodomi*



*Yoshiko Murakami*



*Norma Muzio*



*Sakae Nakatsui*

MEYERS, NORMA—Academic.  
 MEYLING, MARY—Academic; Spanish Club.  
 MICHEL, MILDRED—Commercial.  
 MIKASA, AKIRA—Academic; Japanese, Spanish, Red Cross Clubs.

MILLER, JAY—Academic; 11A Class President Spr. '40.  
 MILLIGAN, HUGH—Academic; Sgt.-at-Arms Les Mousquetaires Fall '38; Civic, Round Table, T-Square Clubs.  
 MILLS, BETTY JO—Academic; Girls' Science Club.  
 MITCHELL, BELLE—Commercial.

MORGAN, BETTE—Academic; Attended Wasco Union High School Fall '37-Spr. '40; Haggin Art Prize Fall '40.  
 MORGAN, MELBA—Academic; Grad. 3½ Yrs.; Orchestra; Spanish, Pro Musica Clubs.  
 MORIWAKI, CHIEKO—Commercial; Vice Pres. Japanese Club Spr. '41.  
 MORIWAKI, MIEKO—Commercial.

MORODOMI, SONOYE—Commercial.  
 MORRISON, GEORGE—Vocational.  
 MORRISON, LESTER—Academic.  
 MOTTO-ROS, DORRAINE—Commercial.

MURAKAMI, TOSHIKO—Academic.  
 MURANO, MASAKO—Commercial; 1 Sem. Honor Scholarship.  
 MURPHY, HAROLD—Academic; Block "S"; Block "B" in Football.  
 MUTHART, ANNE—Academic; 5 Sem. Honor Scholarship; Attended Vacaville Union High School, Vacaville, Calif. Fall '37-Spr. '41.

MUZIO, NORMA—Academic.  
 NADOTTI, LOUISE—Academic; Girls' Science, Italian Clubs.  
 NAGEL, DON—Academic; Grad. 3½ Yrs.; German Club.  
 NAKASHIMA, TOSA—Academic.

NAKATSUI, SAYAKE—Commercial.  
 NAVARRO, MARY—Commercial.  
 NAVONE, JULIA—Commercial; Italian Club.  
 NEIL, MARION—Academic; Attended Victorville High School, Victorville, Calif. '37-'38.



*Mary Meyling*



*Mildred Michel*



*Akira Mikasa*



*Jay Miller*



*Betty Jo Mills*



*Belle Mitchell*



*Melba Morgan*



*Chieko Moriwaki*



*Mieko Moriwaki*



*George Morrison*



*Lester Morrison*



*Dorraine Motto-Ros*



*Masako Murano*



*Harold Murphy*



*Anne Muthart*



*Louise Nadotti*



*Don Nagel*



*Tosa Nakashima*



*Norma Muzio*



*Julia Navone*



*Marion Neil*



# JUNE



*Elaine Nelson*



*Thomas Nishimura*



*June Norris*



*Josephine O'Brien*



*Eleanor Oschner*



*Virgil Pagano*



*Charles Henry Paya*

NELSON, ELAINE—Academic; Attended Calaveras High School, San Andreas, Calif. Fall '37; Bret Harte High School, Angels Camp, Calif. Fall '37.  
 NEMIE, JOE—Academic; Pan Pacific Club.  
 NG, DOROTHY—Commercial; Sec. Treas. Chinese Club Fall '38.  
 NICHOLSON, EDITH—Academic; Grad. 5½ Yrs.; Vice Pres. 11A Class Spr. '40; Spanish Club.

NISHIMURA, THOMAS—Academic; Grad. 5½ Yrs.  
 NIXON, MARGUERITE—Commercial; Blue & White Sales Manager '38; Business Manager '40-'41; Spanish Club.  
 NOLAN, BARBARA—Academic; 5 Sem. Honor Scholarship; Quill & Scroll; Reporter on G. & T.; Italian, Latin Clubs.  
 NOMA, ARTHUR—Academic; Japanese Club; Attended Sacramento High School, Sacramento, Calif. Spr. '40.

NORRIS, JUNE—Academic.  
 NORTH, DORIS—Commercial; Sec. Old English "S" Spr. '40; Pres. Spr. '41; Sec. 12A Class Spr. '41; Troubadours; Spanish, Pro Musica Clubs.  
 NUNES, CLARACIE—Academic; Attended Fresno High School, Fresno, Calif. '38-'40.  
 NUNES, ROBERT—Academic; Spanish Club.

O'BRIEN, JOSEPHINE—Academic; Pan Pacific Club.  
 OGDEN, JEAN—Academic; Spanish Club.  
 OGDEN, RUTH LOUISE—Academic; Treas. Christian Students' Luncheon Club Spr. '40; Orch.; Pro Musica, Spanish, Pan Pacific Clubs.  
 OLIVARES, LILLIAN—Commercial; Old English "S"; G. A. A. Basketball, Baseball, Hockey Awards; Etiquette Club.

OSCHNER, ELEANOR—Commercial; Attended McClatchy High School, Sacramento, Calif. Spr. '40.  
 OSTERDOCK, LAWRENCE—Academic; Band; Spanish Club; 1st Prize McKee Art Contest in Charcoal Drawing; Honorable Mention in Pastels; Honorable Mention in Scratchboard; Troubadours.  
 OTO, FUJIYE—Academic; 6 Sem. Honor Scholarship; Gold Seal Bearer; Japanese Club.  
 OTSUBO, TOSHIO—Academic; Japanese, Pan Pacific, Spanish Clubs.

PAGANO, VIRGIL—Academic; Italian Club.  
 PARKER, PATRICIA—Academic; 3 Sem. Honor Scholarship; Pro Musica, Spanish Clubs.  
 PASCO, SERGIO—Academic; Pres. Filipino Club Fall '40; Block "S" in Football; Band; Chorus; Camera Club.  
 PASSADORE, EMILY—Commercial; 5 Sem. Honor Scholarship; Sec. Etiquette Club Fall '37; Pres. '38; Italian Club.

PAYA, HENRY—Academic; Grad. 5½ Yrs.  
 PEDERSEN, DICK—Academic; Grad. 5½ Yrs.; 2 Sem. Honor Scholarship; Quill & Scroll Fall '40-Spr. '41; Treas. Trojan Hi-Y Fall '40; Pres. Spr. '41; Pres. Los Gatos Fall '40; Commissioner of Organizations Fall '40; Commissioner of Publications Spr. '41; Assistant Sports Editor Fall '40; Editor of G. & T. Spr. '41; Troubadours; Pro Musica Club.  
 PEJRANO, LAURA—Commercial; Italian Club.  
 PELLEGRINI, OLGA—Commercial; Italian Club.



*Joe Nemie*



*DOROTHY V. NG*



*Edith Nicholson*



*Marguerite Nixon*



*Barbara Nolan*



*Arthur Noma*



*Doris North*



*Claracie Nunes*



*Robert Nunes*



*Jean O'Brien*



*Ruth Louise Oden*



*Lillian Olivares*



*Lawrence Osdock*



*Fujiye Ota*



*Toshio Otsubo*



*Patricia Parker*



*Sergio Pasco*



*Emily Passadore*



*Dick Pedersen*



*Laura Pejano*



*Olga Pellegrini*



# GRADUATES



*Carmen Perino*

PERINO, CARMEN—Vocational; 2 Block 'B's in Football; Intertype Operator Fall '58-Spr. '41.

PERRY, JOE—Vocational.

PETERS, HARVEY—Academic.

PETERSON, DOROTHY—Commercial.



*June Phillips*

PHILLIPS, JUNE—Academic; Spanish Club.

PIAZZA, NORMA—Commercial; Band; Italian, Pro Musica, Etiquette Clubs.

PIPER, TOM—Academic; Chorus.

PORES, BEN—Academic; Band; Pro Musica.



*Bennie Prato*

PRATO, BENNIE—Commercial; Italian Club.

PREECE, HAROLD—Academic; German Club; Attended Gallup High School Fall '37-Spr. '38; Modesto High School, Modesto, Calif. Spr. '39.

PRICE, JUNE—Academic; 4 Sem. Honor Scholarship; Vice Pres. Latin Club Fall '59; Cast of "Rhapsody in Six Raps"; Pan Pacific, Latin Clubs.

PRICE, VERNON—Academic; Band; Pro Musica; Latin, Pan Pacific Clubs.



*Dorothy Privat*

PRIVAT, DOROTHY—Academic; Quill & Scroll '40-'41; Associate Editor G. & T. Fall '40; Reporter Spr. '41; Spanish, G. A. A., Christian Students' Luncheon Clubs.

PULICH, LEDDY ANN—Academic; Vice Pres. Pan Pacific Club Fall '40; Pan Pacific, Playcrafters Clubs; Attended Tracy Union High School, Tracy, Calif. '37-'38.

RABY, TED—Academic.

RAISCH, BEVERLY—Academic; G. A. A. Basketball, Hockey, Baseball Awards; Orchestra; Spanish, Girls' Science, Pro Musica Clubs.



*Isabel Ramirez*

RAMIREZ, ISABEL—Academic; Sec. Spanish Club Fall '58; Italian Club.

RATTO, DONALD—Academic; Sec. Pro Musica; Orchestra; Italian Club.

REHNERT, DORIS JEAN—Academic; Pres. 12A Class Spr. '41; Student Control Spr. '40; German, Pan Pacific, P. O. Musica Clubs.

REILLEY, BETTY—Academic; Spanish, Pro Musica Clubs.



*Laura Remonda*

REMONDA, LAURA—Commercial; 5 Sem. Honor Scholarship; Pres. Italian Club Fall '40-Spr. '41; G. A. A. Basketball, Baseball Awards; Italian, Etiquette Clubs; Student Control Spr. '41; Bronze Medal at Italian Night Spr. '40.

RIEBER, RICHARD—Academic; Spanish Club.

ROBINSON, LELAND—Academic; Sgt.-at-Arms Aeronautics Club Fall '59; Sgt.-at-Arms Los Gauchos Club Fall '40; Band; Boys' Science Club; Attended Oakdale High School, Oakdale, Calif. '37-'38.

RODRIGUEZ, ROBERT—Commercial.



*Margaret Ross*

ROSS, MARGARET—Commercial; G. A. A.; Attended Irving Junior High School Fall '37-Spr. '38; Pocatello Senior High School, Pocatello, Idaho Fall '38-Spr. '40.

ROSSMAN, MAXINE—Commercial.

ROTH, ELENOR—Academic; 2 Sem. Honor Scholarship; Orchestra; Pro Musica, Spanish Clubs.

RUBALCABA, HORTENSE—Academic; Pres. Los Burros Club Spr. '59; Vice Pres. Fall '59; Sec. Los Cucarachas Spr. '40; Sec. Los Amapolas Spr. '58; G. A. A. Award in Baseball.



*Joe Perry*



*Harvey Peters*



*Dorothy Peterson*



*Norma Piazza*



*Tom Piper*



*Ben Pores*



*Harold Preece*



*June Price*



*Vernon Price*



*Leddy Ann Pulich*



*Ted Raby*



*Beverly Raisch*



*Don Ratto*



*Doris Jean Rehnert*



*Betty Reilley*



*Richard Rieber*



*Leland Robinson*



*Robert Rodriguez*



*Margaret Ross*



*Elenor Roth*



*Hortense Rubalcaba*



# JUNE



*Dave Sabiston*



*Martin Samuelson*



*Manuel Santos*



*George Schaefer*



*Louise Schneider*



*Annabelle Seaver*



*Melvin Serventi*

SABISTON, DAVE—Academic; J. V. Block in Tennis; Attended Hollywood High School, Hollywood, Calif. Fall '38; Virgil Junior High School '39; 1st Place in California History Contest Sponsored by American Legion Spr. '39.  
SAKO, ELLEN—Academic; Japanese Club.  
SALLAH, MARIE—Commercial; Chorus.  
SALMON, WANETA—Academic; Pan Pacific Club.

SAMUELSON, MARTIN—Vocational.  
SANCHEZ, JESUS—Academic; Grad. 3½ Yrs.; 2 Sem. Honor Scholarship; Los Gauchos Club.  
SANDBERG, ELEANOR—Academic; Vice Pres. Pan Pacific Club Spr. '41; Pres. Tri-Y Club Fall '40; Spanish Club.  
SANDERS, JANICE—Academic; Cast of "Rhapsody in Six Raps"; Second Prize McKee Art Contest at Haggin Museum '39; Second Prize '40.

SANTOS, MANUEL—Vocational; Pres. Auto Electric Class.  
SATO, ISAO—Academic; Chorus; Spanish Club.  
SATO, ROSIE—Academic; 1 Sem. Honor Scholarship; Japanese, Latin Clubs; Attended Clarksburg High School, Clarksburg, Calif. '37.  
SATTUI, DOROTHY—Academic; 2 Sem. Honor Scholarship; Sec. Italian Club Fall '38-Spr. '39; Vice Pres. Italian Club Fall '39-Spr. '40; Vice Pres. Student Body Spr. '41; Student Control Spr. '41; Society Editor of "Lo Studente Italiano" Fall '39-Spr. '40; Social Service Club, Tri-Y Clubs; Bronze Medal in Italian Spr. '38.

SCHAEFER, GEORGE—Vocational.  
SCHIRMER, LOUIS—Academic; Attended Watsonville High School, Watsonville, Calif. Fall '36-Spr. '38.  
SCHMIDT, ELLEN—Academic; Old English "S" Fall '39-Spr. '41; German Club.  
SCHMIDT, GEORGETTA—Academic; Cast of "Rhapsody in Six Raps"; Les Cadets, Christian Science, Pro Musica, Talent, Junior Red Cross Clubs.

SCHNEIDER, LOUISE—Academic; Pan Pacific Club.  
SCHON, LA VERNE—Commercial; Jr. Red Cross Chairman Fall '40-Spr. '41; Sec. Etiquette Club Fall '37; Pres. Spr. '38; G. A. A. Basketball, Baseball Awards; Student Council.  
SCHREIBER, VERNON, Jr.—Academic; Pres. Playcrafters Fall '40-Spr. '41; Varsity Block in Track; Playcrafters; Cast of "Houseparty"; Spanish, Pan Pacific Clubs.  
SCOTT, IRENE—Academic; Band; Pro Musica, Spanish Clubs.

SEAVER, ANNABELLE—Academic; Chorus; Playcrafters; Girls' Science, Pro Musica Clubs; Attended Chico High School, Chico, Calif. Fall '37-Spr. '38.  
SEIBOLD, LA VERNE—Academic; Attended Lodi High School, Lodi, Calif. Spr. '37-Fall '38.  
SEIDEL, EVELYN—Commercial; Student Control Fall '40.  
SENSNEY, EMISON—Academic; Quad "C" Hi-Y; Attended Coalinga High School, Coalinga, Calif. '37-'38-'39.

SERVENTI, MELVIN—Commercial; 1 Sem. Honor Scholarship; Italian Club; Gold Medal at Italian Night '38.  
SHEAN, LEO—Academic; Attended University High School, Oakland, Calif. Fall '38-Spr. '39.  
SHEPARD, LEON—Commercial.  
SHIMASAKI, HELEN—Academic; Japanese, Spanish Clubs.



*Eujiko Ellen Sako*



*Marie Sallah*



*Waneta Salmon*



*Jesus Sanchez*



*Eleanor Sandberg*



*Janice Sanders*



*Isao Sato*



*Rosie Sato*



*Dorothy Sattui*



*Louis Schirmer*



*Ellen Schmidt*



*Georgetta Schmidt*



*La Verne Schon*



*Vernon Schreiber Jr.*



*Irene Scott*



*Annabelle Seaver*



*Evelyn Seidel*



*Emison Sensney*



*Leo Shean*



*Leon Shepard*



*Helen Shimasaki*



# GRADUATES



*Jimmy Shimasaki*

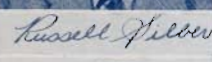
SHIMASAKI, JIMMY—Academic; Block C in Basketball; Japanese Club.



SHIMIZU, ALICE—Academic; Japanese, Spanish, Pan Pacific, Pro Musica Clubs.

SHIPLEY, LELA—Academic; Playcrafters; Cast of "House-party"; Talent, Pan Pacific Clubs.

SHIRONAKA, HAROLD—Academic; Block "B" in Track; Japanese Club.



*Russell Silber*

SILBER, RUSSELL—Academic.

SISTING, NONA—Commercial; Sec. 11B Class Fall '59; G. A. A. Baseball Award; Student Control Fall '40.

SMITH, BETTY GRACE—Academic; Attended Ripon High School, Ripon, Calif. Fall '37-Spr. '38; Modesto High School, Modesto, Calif. Fall '38-'39.

SMITH, JANET—Academic; Orchestra; Pro Musica Club.

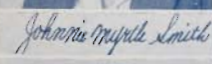


SMITH, JOHNNIE MYRTLE — Academic; G. A. A. Awards in Tennis, Baseball; Tennis Trophy; Member Associated Negro Students, Spanish, Girls' Science Clubs.

SMITH, MARY—Commercial; Attended Sacramento High School, Sacramento, Calif. Fall '40.

SMITH, MILDRED—Commercial.

SMITH, NICK—Vocational.



*Johnnie Myrtle Smith*



SNIPES, SHIRLEY—Academic; Vice Pres. T-Square Fall '40; Troubadours; Cast of "Rhapsody in Six Raps".

SOLINA, FRANK—Commercial; Cast of Italian Night Play "Carte in Tavola" Spr. '41; Cast of "Il Digiuno e la Vita" Spr. '40; Italian Club.

SPANOS, ALEX—Academic; Playcrafters; Hi-Y, Spanish, Pro Musica Clubs; 1st Prize in Major Contest of District '40-'41.

SPANOS, DANNY—Academic; Sgt.-at-Arms Les Mousquetaires; Playcrafters; Spanish, Hi-Y, T-Square, Pro Musica Clubs; 1st Prize in Major Contest of District Fall '40-'41.

SPANOS, HELEN—Commercial; Spanish Club.

SPARGO, PETER—Vocational.

STEWART, DONALD—Academic; 2 Sem. Honor Scholarship; Block "S" Treas. Spr. '41; Block "C", Block "B" in Track; "B" Block, Block "S" in Football.

STOCKER, BARBARA—Academic; Troubadours; Italian, Talent, Pro Musica Clubs.



*Shirley Spanos*



*Helen Spanos*

SUDOKO, TARO—Vocational.

SUGI, KINICHI—Academic.

SUGIMOTO, BILL—Academic.

SWENSON, MARLYS—Academic; Grad. 5½ Yrs.; Gold Seal Bearer; 4 Sem. Honor Scholarship; Pres. Honor Scholarship Society Spr. '41; Pres. Old English "S" Fall '40; Pres. Tennis Club '40-'41; G. A. A. Awards in Hockey, Baseball; Latin, Science, Social Service Clubs; Speaker at Lincoln Memorial Program.

TADLOCK, ARLINE—Commercial.

TAIT, MARJORIE—Commercial.

TAKAHASHI, NOBUKO—Academic; 7 Sem. Honor Scholarship; Gold Seal Bearer; Speaker at Washington-Lincoln Program.

TAKEMOTO, NOBORU—Commercial.



*Taro Tadoko*



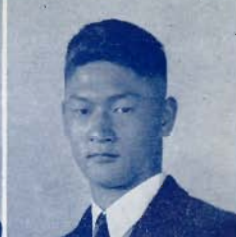
*Arline Tadlock*



*Alice Shimizu*



*Lela Shipley*



*Harold Shironaka*



*Nona Sisting*



*Betty Grace Smith*



*Janet Smith*



*Mary Smith*



*Mildred Smith*



*Nick Smith*



*Frank Solina*



*Alex Spanos*



*Danny Spanos*



*Peter Spargo*



*Donald Stewart*



*Barbara Stocker*



*Kinichi Sugi*



*Bill Sugimoto*



*Marlys Ann Swenson*



*Marjorie Tait*



*Nobuko Takahashi*



*Noboru Takemoto*



# JUNE



*Akira Tanaka*

TANAKA, AKIRA—Academic; Attended Shudo High School, Hiroshima, Japan '56-'58.



*Annie Tanaka*

TANAKA, ANNIE—Academic; Japanese, Pan Pacific Clubs.

TANAKA, MISAKO—Academic; Pro Musica; Cast of "Rhapsody in Six Raps"; Spanish, Pan Pacific, Japanese Clubs.

TANAKA, SHIGEO—Academic.



*Fumiye Taniguchi*

TANIGUCHI, FUMIYE—Academic; Japanese Club.

TEASDALE, JACK—Academic; 10th Place in Cross Country Run Fall '57; 20th Place Fall '58; Italian Club.

TELOMANI, ELLA—Commercial.

TERRAZAS, MARGARET—Commercial; Spanish Club; Attended Rio Vista High School, Rio Vista, Calif. Spr. '39.

TESCH, VIOLET—Academic; German Club.

THOMAS, JUNE—Commercial.

THOMASON, LUCILLE—Academic.

THOMPSON, JACK—Vocational.

TOAL, VIVIAN—Academic; Band.

TORRE, JOE—Academic.

TOWLE, LYNETTE—Academic; Student Control; Attended Lodi High School.

TOY, JICK—Academic; Grad. 3½ Yrs.; Chinese, German, T-Square, Spanish, Boys' Science Clubs.

TRAHERN, JUANITA—Academic.

TRIOLO, MARILYN—Academic; Band; Italian Club.

TROGLIA, CARLO ROY—Commercial.

TSUCHIDA, TOM—Academic.

TSUDAMA, MINORU—Academic; Sgt.-at-Arms Japanese Club; Pres. Spr. '40; Spanish Club.

TSUTSUI, JIMMY—Academic; Grad. 3½ Yrs.

TUMELTY, LOIS—Academic; Vice Pres. French Club Fall '50; Vice Pres. Les Mousquetaires; Girls' Science, Round Table Clubs.

TURNER, DORIS—Commercial; Science Club.

TURNER, MARY ELLEN—Academic; Orchestra.

TUTTLE, MARIAN—Academic; Spanish Club.

TUTTON, RUTH—Academic; Tri-Y Club.

ULERY, ELLEN—Academic; Attended San Rafael High School, San Rafael, Calif. Fall '40.



*Annie Tanaka*



*Misako Tanaka*



*Shigeo Tanaka*



*Jack Teasdale*



*Ella Telomani*



*Margaret Terrazas*



*Violet Tesch*



*June Thomas*



*Lucille Thomason*



*Jack Thompson*



*Vivian Toal*



*Lynette Towle*



*Joe Torre*



*Jick Toy*



*Juanita Trahern*



*Marilyn Triolo*



*Carlo Troglia*



*Tom Tsuchida*



*Jimmy Tsudama*



*Lois Tumelty*



*Doris Turner*



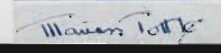
*Vivian Toal*



*Lynette Towle*



*Joe Torre*



*Juanita Trahern*



*Tom Tsuchida*



*Jimmy Tsudama*



# GRADUATES



*Sumi Jean Utsumi*



*Ann Van Leeuwen*



*Joe Verdin*



*Betty Viets*



*Jimmy Walker*



*Suzuko Watanabe*



*Emily Wentzel*

UTSUMI, SUMI—Academic; 2 Sem. Honor Scholarship; Old English "S"; Social-Chairman Japanese Club Fall '39; Recording Sec. Spr. '40; Recording Sec. of Old English "S" Fall '40; Pan Pacific Club.

UYEKUBO, MASARU—Academic; Japanese Club.

UYEKUBO, SATORU—Academic; 4 Sem. Honor Scholarship; Spanish, Japanese Clubs.

VAN DEWARK, JANE—Academic.

VAN LEEUWEN, ANN—Academic; Student Control Spr. '41; Tri-Y, Spanish Clubs.

VANOSSE, WAYNE—Academic; Vice-Pres. Block "S" Spr. '41; 2 Block "S"s in Golf.

VANOTTI, LUCY—Commercial.

VAN SANDT, MARILYN—Academic; Orchestra; German, Pro Musica Clubs.

VERDIN, JOE—Academic; Pan Pacific, Camera Clubs; Attended Grants Pass High School, Grants Pass, Oregon '38-'39.

VERDIN, LUELLA—Academic; G. A. A. Awards in Basketball, Hockey, Baseball; Pan Pacific Club; Attended Grants Pass High School, Grants Pass, Oregon '38-'39.

VEREGGE, HELEN—Academic; 10th Prize in Calif. History Contest.

VICKROY, ALOIS—Academic.

VIETS, BETTY—Academic; 1 Sem. Honor Scholarship; Program Chairman Junior Music Club '39; Pres. '41; Treas. Pro Musica Club Fall '40-Spr. '41; Chorus; Latin Club.

VIGNOLO, EVELYN—Academic; Spanish, Tri-Y Clubs.

VILLANUEVA, VICTORIAN—Academic; Grad. 3/2 Yrs.

WADDELL, JOHN—Academic; 2 Sem. Honor Scholarship; Pres. Spanish Club Fall '39; Menzies-Gomas Award; T-Square, Pan Pacific Clubs.

WALKER, JIMMY—Academic; Sgt.-at-Arms Les Mousquetaires Club Fall '38; Pro Musica, Pan Pacific Clubs.

WALSH, GEORGE—Academic; Vice Pres. 11B Class Spr. '39; 2 J. V. Blocks in Basketball.

WALTHER, CLARENCE—Commercial.

WALTON, PEGGY—Academic; Pres. Hi-Y Spr. '41; Attended Immaculata High School, Leavenworth, Kansas; Sidney Tanier High School, Montgomery, Alabama.

WATANABE, SUZUKO—Commercial.

WAUGH, PATRICIA—Academic; Spanish Club.

WEIL, PHILLIP—Academic.

WELLS, RUBY—Commercial.

WENTZEL, EMILY—Commercial.

WERNER, BERKELEY—Academic; Pres. Hi-Y Fall '40; Pan Pacific Club.

WEST, FLOYD—Academic; Boys' Science Club.

WHITE, BETTIE JAYNE—Academic; German, Pro Musica Clubs.



*Masaru Uyekubo*



*Satoru Uyekubo*



*Jane VanDewark*



*Wayne Vanosse*



*Lucy Vanotti*



*Marilyn VanSandt*



*Luella Verdin*



*Helen Veregge*



*Alois Vickroy*



*Evelyn Vignolo*



*Victorian Villanueva*



*John Waddell*



*George Walsh*



*Clarence Walther*



*Peggy Walton*



*Pat Waugh*



*Phillip Weil*



*Ruby Wells*



*Berkeley Werner*



*Floyd West*



*Bettie Jayne White*



# June Graduates



Henry White



Norwood West



Warren Wright



Dave Young

WHITE, HENRY—Academic; Boys' Glee; Attended Woodland High School, Woodland, Calif. '39-'40; Anderson High; Redding High School.

WHITTALL, THOMAS—Academic; Playcrafters; Cast of "Neighbors"; Cast of "Oh Imogene".

WILLETT, JUNEEN—Academic; Chorus; Pro Musica Club; Attended Balboa High School, San Francisco, Calif. Fall '38; Everett Junior High School.

WILSON, RAY—Academic; Latin, Christian Students Luncheon Clubs.

WIRTH, NOREEN—Academic; Grad. 5½ Yrs.; Latin, Girls' Science Clubs.

WISE, MARENE—Academic.

WONG, ANNIE—Academic; Chinese Club.

WONG, WARREN—Commercial; Pres. Chinese Club Fall '40.

WRIGHT, MARION—Commercial; Band; Orchestra.

YAMAGISHI, KIYOSHI—Commercial; Japanese, Tennis Clubs.

YAMAGUCHI, NOBU—Academic; German, Japanese Club.

YIP, RICHARD—Academic; Art Editor G. & T. Spr. '40; Chinese, Spanish, T-Square Clubs; McKee Art Contest Winner '39-'40.

YOUNG, DAVE—Academic; Band; German, Pan Pacific Clubs.

ZEFF, MARTHA—Academic; 1 Sem. Honor Scholarship; Quill & Scroll; News Editor Fall '40; Reporter G. & T. Spr. '40; Blue & White Copy Reader Fall '38; Pro Musica; Spanish Clubs.

ZIGNEGO, WILLIAM—Academic; Orchestra; Italian, Pan Pacific Clubs.

ZIMMERS, LENORA—Academic; Grad. 5½ Yrs.; 2 Sem. Honor Scholarship; Vice Pres. Latin Club '40-'41.



Tom Whitall



Juneen Willett



Ray Wilson



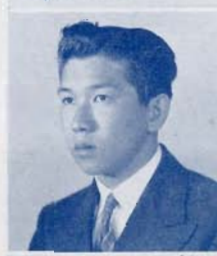
Marlene Wise



Annie Wong



Warren Wong



Kiyoshi Yamaguchi



Nobu Yamaguchi



RICHARD YIP



Martha Zeff



William Zignego

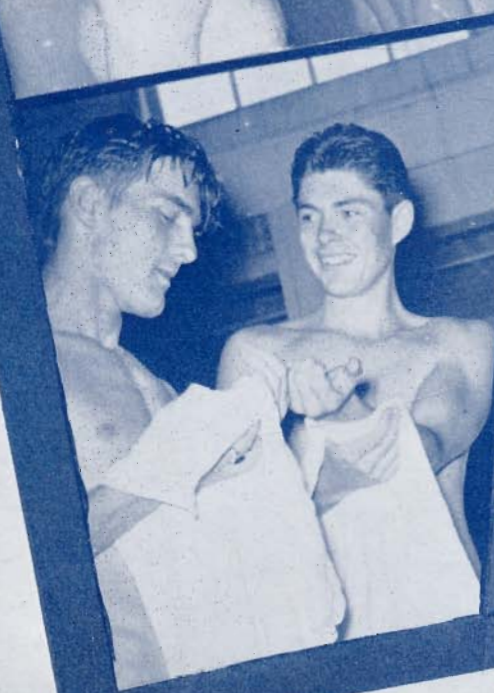


Lenora Zimmers

1. "The" boy friend seems to be a little late.
2. Two gay silhouettes—Susan Adams and Marjorie Gardella.

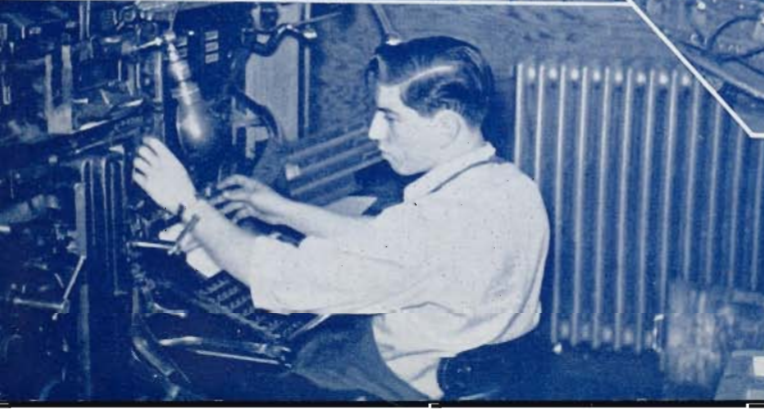
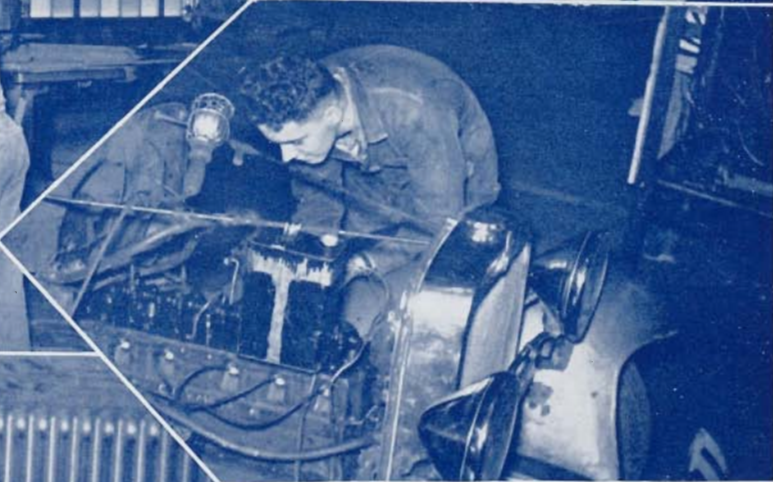
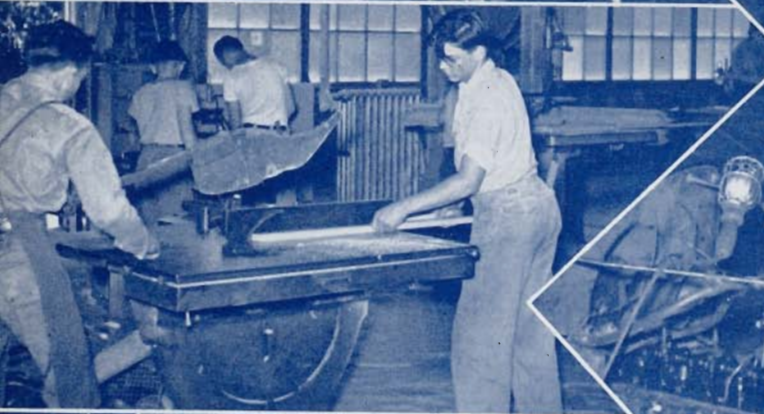
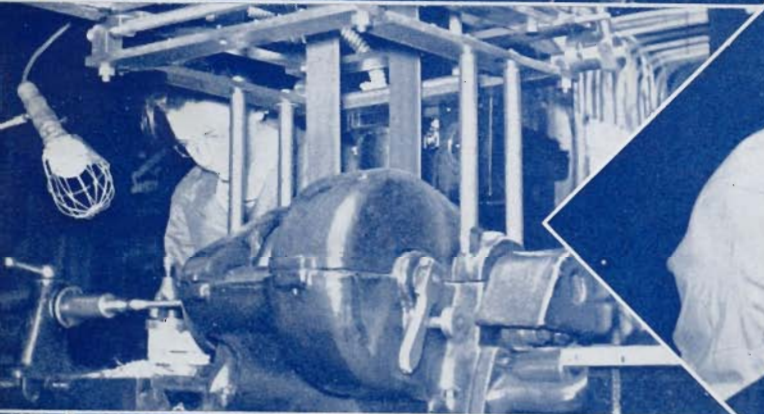
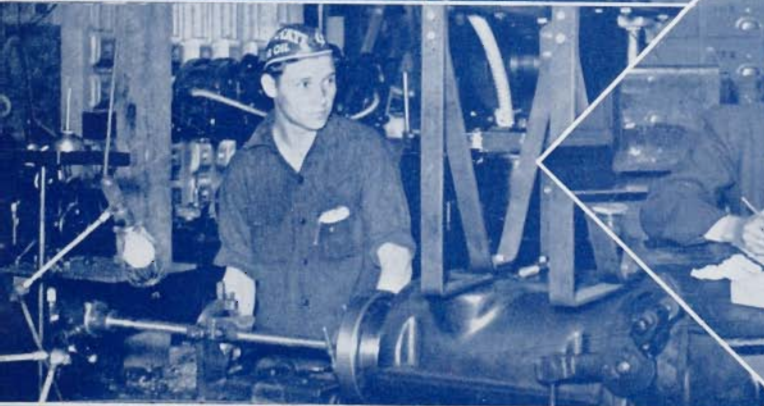






1. Mike Garrigan's class reports for roll call. 2. The pause that refreshes—"Sonny" Clayton, Wesley Morrison, George Walsh, and Harold Crowden enjoy a shower. 3. Clayton's modesty got this one past the censor. 4. Hal Crowden must be telling a good one. 5. Darn that watch!





1. Harland De Young doing a biology experiment.  
 2. In the machine shop. 3. Working at the lathe.  
 4. At the table saw. 5. Carmen Perino working at  
 the intertype machine. 6. Eleanor Maggs drawing a  
 map of the mouth for physiology. 7. Vocational  
 drawing. 8. Overhauling a motor.