

Senior Memories

WILLIAM CHARLES MC MURRAY—Academic; Student Body Pres. '36; Pres. Tee-Square Club '35, '36; 2 Circle "S's" in Track; Band '32-'34.

BARBARA FRIEND LANEN—Commercial; 4 Sem. Honor Scholarship; 1st Vice-Pres. Student Body; Girls' League Advisory Board, Fall '35; Pres. Old Eng. "S" '36; Sec. Old Eng. "S", Fall '35; Old Eng. "S" '34-'36; Student Control, Spring '34, Spring '36; Cast of "It Never Rains."

ALFRED HOKHOLT—Academic; Com. Athletics Fall '35; Com. of Records '36; 3 Block "S's" in Swimming; 1 Year Band; Student Control Fall '35.

BETTY CLARKE—Academic; Vice-Pres. Student Body '35; Pres. Girls' League '36, Sec. Latin Club '34; Drum-Major '33, '34; Orchestra '34; Student Control '35, '36; Cast of "It Never Rains."

FLOYD S. FOPPIANO—Academic; 5 Sem. Honor Scholarship; Com. of Welfare '36; Pres. Pan-Pacific Club '34; Vice-Pres. Honor Scholarship '35; Block "S", Track '35; Student Control Fall '35.

MARY RUTH MARNELL—Academic; Com. Organizations '36; Rally Com. '35, '36; Girls' League Advisory Board '35; G. and T. Reporter '35, '36; Troubadours '35, '36; Student Control '35, '36; Cast of "It Never Rains."

JOHN MC BRIDE—Academic; Com. Organizations '35, '36; Pres. French Club '35; Vice-Pres. Tennis Club '35; Pres. Tennis Club '36; Circle "S", Block "S" Tennis; Bus. Mgr. for "It Never Rains."

BETTY DIXON—Academic; 5 Sem. Honor Scholarship; Chairman Jr. Red Cross '35, '36; Pres. Honor Scholarship, Fall '35; Sec. Pan-Pacific Club '34; Old Eng. "S" '36; State Winner in International Business Machine Corp. Essay Contest '35; Speaker at Girls' League Convention '35; Student Control '36

MERYL THOMAN—Academic; Editor G. and T. Spring '36; Vice-Pres. Quill and Scroll, Fall '35; Successively Reporter, Columnist, Assoc. Editor, News Editor G. and T.; Publicity Mgr. "Huckleberry Finn" '35; "Growing Pains" '36; General Chairman, "Masc and Fem Review."

JEAN WALCOTT—Academic; Com. of Publications Fall '35; Treas. Tri-Y '35; Sec. Quill and Scroll, Fall '35; News Ed. "Cub" Issue '35; Reporter, News Editor G. and T. '35; Troubadours '33-'36; Publicity Mgr. for "It Never Rains".

ELLEN CLAIR WALKER—Academic; Annual Editor '35, '36; Jr. Reporter '34, Reporter '36, Assoc. Editor G. and T. '35; Quill and Scroll '35, '36.

ELLEN ADELE MATTHEWS—Commercial; Old Eng. "S" '35, '36; Adv. Mgr. G. and T. '36.

SHERWOOD W. NORTON—Academic; Com. Welfare, Fall '35; Pres. 12A Class; Pres. Latin Club '34; Vice-Pres. Pan-Pacific Club '33; Block "S's", Circle "S" in Basketball; Junior Rotarian, Spring '36; Student Control, Fall '35; Cast of "It Never Rains."

JOHN W. BAUMAN—Academic; Sec. 12A Class; Vice-Pres. Hi-Y '35, '36; Attended Sonora High '32, '33.

SHIGETAKA ARAO—Commercial; Gold Seal; 6 Sem. Honor Scholarship; Historian Japanese Club '35; Sec. Japanese Club; First prize Chamber of Commerce essay contest; Graduated in 3½ years.

RUTH LOMBARDI—Academic; Gold Seal, 7 Sem. Honor Scholarship; Vice-Pres. Honor Scholarship, Spring '35; Student Control, Fall '34; Spring '36; Commencement Speaker.

TOSHIKO MORITA—Academic; Gold Seal, 7 Sem. Honor Scholarship; Sec. Japanese Club '35; Pres. Northern Calif. Japanese Students' Federation '35, '36; Prize, American Legion Constitution Essay; Honorable Mention, Chamber of Commerce Essay; First Prize in Japanese Club Oratoricals '35; Student Control '36.

# JUNE CLASS

## & CLASS OFFICERS

SCHOOL	 <i>Bill</i>		
	 <i>Ray</i>	 <i>M.R.M.</i>	
	 <i>Betty</i>	 <i>Meryl</i>	
		 <i>E. Clark</i>	
		 <i>John</i>	
GOLD	SEAL	BEARERS	
			
1936			





MARTIN N. PULICH—Academic; Gold Seal, 7 Sem. Honor Scholarship; Vice-Pres. Latin Club '34, '35; Student Control '35, '36; Commencement Speaker.

ROSE LEE ROWE—Academic; Gold Seal, 6 Sem. Honor Scholarship; Graduated in 3½ Years.

SHIZUKO TESHIMA—Commercial; Gold Seal, 5 Sem. Honor Scholarship; Graduated in 3½ Years.

DICK DALEY—Academic; Vice-Pres. Boys' Science Club '35; Troubadours '33, '34; Armistice Day Speaker '35; Rally Committee '36; Student Control '35, '36.

CLIFFORD BERTELSON—Vocational; Block "S" in Football and Track; Student Control '36.

JESS DELANEY—Commercial; Capt. Swimming Team '35; 4 Years Swimming Team; 1 Year Basketball Team; Medal for Intramural Basketball '35; Basketball Championship '33.

ROBERT WALLACE HARRISON—Academic; One Sem. Honor Scholarship; Troubadours '34-'36.

EVELYN GOLDEN KIZER—Academic; Band '33-'36; Orchestra '33-'36; Band Drum Major '34.

J. PETER VALLEM—Academic; 4 Sem. Honor Scholarship; Band '35, '36; Orchestra '35, '36.

FRANK FUSAMI KUGA—Academic; Circle "S" in Basketball '33; 2 Circle "S"s" in Track '34; B Track Team '35; A Track Team '36; Second Prize Pen and Ink Drawing Mc Kee Contest.

BEVERLY ADAMS—Academic; Band '34-'36; Orchestra '35, '36.

RICHARD SMITH—Academic; (Advanced to Class Latter Part of April.)

ROMAN JAUJEN ADVIENTO—Academic; Vice-Pres., Sec.-Treas. Filipino Club '35, Pres. Filipino Club '36; Attended Vigan High, Philippine Islands '29, '30.

BERNITA ALLEN—Academic.

CURTIS ALLEY—Academic; One Sem. Honor Scholarship.

RUTH ANDERSON—Academic; Old Eng. "S", '35, '36; Attended Kelseyville High '33; Patterson High '34.

CLYDE ANDREW—Vocational; Jr. Red Cross Rep. '33; Vocational Student Council '33-'36; G. & T. Intertype Operator

GLENNA ANDRUS—Commercial; 2 Sem. Honor Scholarship; Class Numerals; G. and T. Advertising Staff '33, '34.

Senior Memories

LOTTIE AUNGER—Commercial; Sec. Commercial Eng. Club '35.

FRANCES BACHETTI—Academic.

TESSA DEAN BAILEY—Academic; Attended Carmel High '34, '35; Graduated in 3½ years.

NADINE BAKER—Commercial; Class Numerals.

DOROTHEY FRANCES BALES—Academic; G. and T. Exchange Editor '36.

FRED M. BALLEW, Jr.—Academic; 2 Circle "S's" Football.

BABS BARBER—Academic.

BILL BARNETT—Academic.

ALBERT BARONE—Academic.

ALBERT JOHN BARROWS—Commercial.

JOSEPH BATTILANA—Academic.

BERT BEAUMONT—Commercial.

IMADEEN BEAVER—Academic.

KEITH A. BECKWITH—Vocational; Pres. Woodcrafters '35, '36; Orchestra '33—'36.

EUGENIA BERKLEY—Academic; Graduated in 3½ Years.

JACK BICKLE—Academic; Yell Leader '34—'36; Rally Committee '34—'36; Basketball Mgr. '33; Circle "S" Basketball; Student Control '36.

LAURA BLACKFIELD—Academic; Graduated in 3½ Years.

JOYCE BLACKMAN—Academic; Attended Oakland High '34, '35.

DOROTHY ANNE BLADH—Commercial; 2 Sem. Honor Scholarship; Rally Com. '36; Asst. Adv. Mgr. G. and T. '33, '34; Troubadours '34—'36; Attended Castillejo School '34, '35.

RUTH BLAZER—Academic.

JOHN F. BLINN Jr.—Academic; Pres. Boys' Science Club '35, '36; Sec. Hi-Y '35, '36; Cast of "It Never Rains."

Twenty-one





JUNE

CLASS

*Carroll*



1936

Senior Memories

IRIS BLOSSOM—Commercial.  
ALBERT FREITAS—Academic.  
CARROLL JULIUS BOSCH—Academic; Historian Hi-Y '35.

JACK BOWDEN—Academic; Band '33—'36; Orchestra '34—'36; G. and T. Reporter '35; Graduated in 3 1/2 Years.  
EDDIE BOWE—Academic.  
LOUIS R. KENWORTHY—Academic.

RICHARD DOMINIC BOZZINI—Commercial.  
ALICE BRADY—Academic.  
LOIS BRANDT—Commercial; Student Control '35.

HAMILTON BRIGGS—Academic; Yell Leader '32—'36; Attended Galileo High '34.  
WILLIAM D. BRIGNARDELLO—Academic; 3 Sem. Honor Scholarship.  
ALMA R. BROTHERTON—Academic; Award in Broad-jump, Relay Team at Toole; Cast of "The Melting Pot", Toole, Utah; Attended Toole High, Utah '33, '34.

NAT BROWN, Jr.—Academic; Pres. Pan-Pacific Club '34, '35; Graduated in 3 1/2 Years.  
EVELYN BROWNE—Academic.  
MARJORIE BURNSIDE—Commercial; Attended Leuzinger High '32, '33, Inglewood High '33, '34, Riverside High '35.

FRANK BUSALACCHI — Commercial; One Sem. Honor Scholarship.  
PETER CALLEGARI—Commercial; Treas. Commercial Eng. Club '35; Asst Adv. Mgr. G. and T. '35.  
BETTY JANE CALVERT—Academic; Attended Everett High '33, '34, Napa High '34.

NORMA L. CANESSA—Academic; Wardrobe Mgr. for "It Never Rains."  
BILL CARLSON—Academic; Football Team '34, '35; 2nd Place in Menzies Trophy '32; Student Control '33.  
ROBERT S. CARLSON—Academic; Track '34; Student Control '33.



Senior Memories

CHARLES CARPINO — Vocational; Graduated in 3½ Years.

LILLIAN CARR—Commercial.

JAMES CARROLL—Academic; Attended James Lick Jr. High '32, Balboa High '33, '34.

JANE ELIZABETH CARTER—Academic; One Sem-Honor Scholarship; Sec.-Treas. Social Service Club '35, '36; Pres. Tri-Y '36; Student Control '34; Rally Committee '36.

JACK H. CASENAVE—Academic.

RAYMOND A. CATALAN — Academic; 3 Block "S's" Track; Won Cross Country Race 3 Years; American Legion Baseball Team '34.

MELVIN CAVIGLIA—Commercial; 4 Sem. Honor Scholarship.

TOM CHIKARAISHI—Academic—Vocational.

MURIEL EVELYN CHRISMAN—Academic; Attended Polytechnic High '32.

DEAN CLAWSON—Academic; Range Officer Rifle Club '35; Drum-Major '34, '35; Award in Band.

FRANCES CLEMENTS—Academic; Vice-Pres. 12B Class; Vice-Pres. Tri-Y '35; Attended Eureka Jr. High, Santa Rosa High and Alameda High '32; Gilroy High, Spring '33.

HARRIETTE COCHRAN—Academic; Prize in Bread Essay Contest; Merit Board, Spring '35, '36.

LORENE COLFELT—Academic.

FRANCES CONCHETE—Academic; Graduated in 3½ Years.

JEANNE COOK—Academic; One Sem. Honor Scholarship; Girls' Sports Editor G. and T., Fall '35, Reporter G. and T. '35; Orchestra '34—'36; Old English "S" '34—'36; High Steppers '34.

BARBARA CORNELL—Academic.

DAVID ALLEN CORSER — Academic; Attended Garfield Jr. High Fall '32, '33.

DOROTHY COX—Academic; One Sem. Honor Scholarship; Attended Hollister High '32, '33.

JANICE LOUISE CRAIG—Academic; Sec. Hobby Club '32, '33; G. and T. Reporter '35, '36; Hobby Club Prize '33; Cast of "It Never Rains."

YOLANDA CRAVIOTTO—Academic; One Sem. Honor Scholarship; Vice-Pres. French Club '35; Student Control Fall '35; Cast of "It Never Rains."

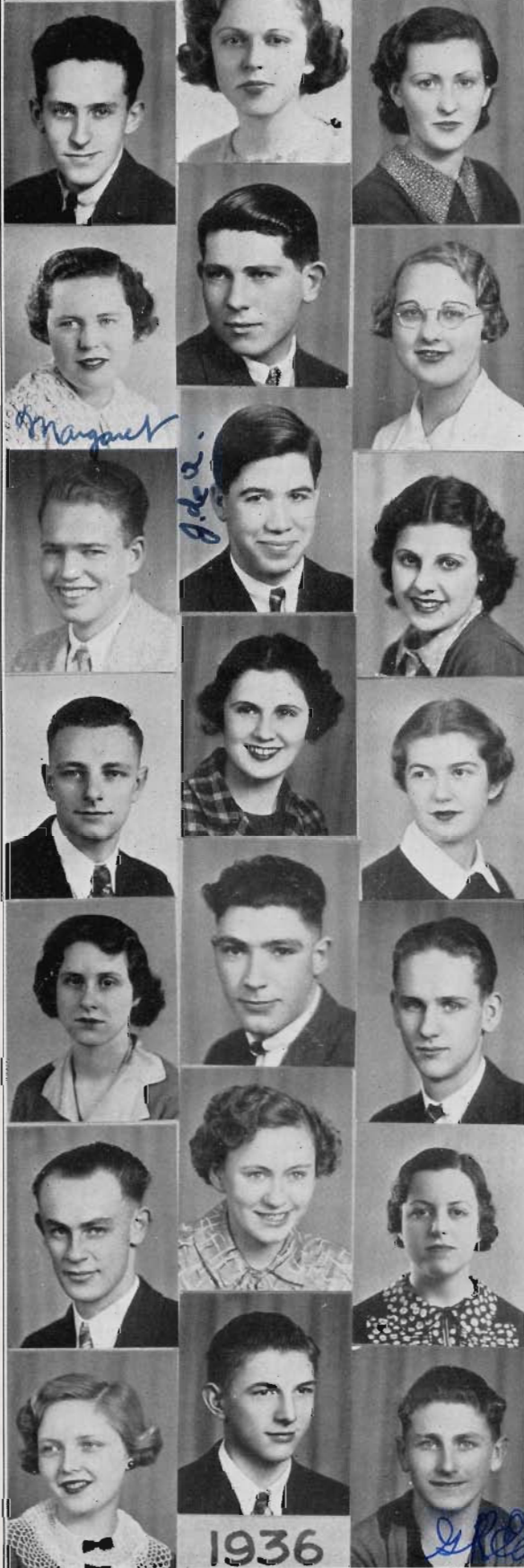
ROBERT WAYNE CRISS—Academic; Mgr. Tennis Team '36; 2 Block "S's"; Orchestra '33, '34.





# JUNE

# CLASS



## Senior Memories

VERNON CROWELL—Academic.

MAXINE ELIZABETH CULLEY—Academic.

JUNE CURTIS—Academic.

MARGARET DARDIS — Academic; Attended St. Mary's High '32, '33.

TOM L. DARDIS—Academic; Circle "S" Football; Attended St. Mary's High '32, '33.

HELEN DAVIES — Commercial; Playcrafters '35, '36; Cast of "It Never Rains."

HERBERT DAVIS—Vocational.

JOHN de ARRIETA—Academic.

JOSEPHINE De LUCA—Commercial; Graduated in 3½ Years.

LIONEL L. DELUCCHI—Academic; Block "S" in Football; Mgr. Football 4 Years.

GEORGIA DEMAKOPOULOS—Academic.

LESLA DENNISON—Academic.

AGNES DENTONI—Commercial.

IRVING DAVID DePAULI—Commercial.

CLAUDE B. DEW—Commercial; Troubadours '35, '36.

HAROLD C. DICKEY—Academic; Treas. Rifle Club Spring '35; Property Mgr. of "It Never Rains."

JEAN MARGARET DIETZ—Commercial; Student Control Fall '34, Spring '36.

DOROTHY DINUBILO—Academic; Vice-Pres. Tri-Y '36; Italian Award.

ELIZABETH ANNE DOUGLAS—Academic.

WILLIAM JOHN DU BOIS—Academic.

GLENN EDEN—Academic.

Senior Memories

JENNIE ELIADES — Commercial; Member Girls' Student Control '36.

DOROTHY ELLIOTT—Academic.

ROBERT EMERSON—Academic.

WARREN E. ENGDALL—Academic.

JACK ERZ—Academic; Historian Hi-Y '34, '35; Band '34, '35.

JOSEPH A. ESTRADA — Vocational; Circulation Mgr. G. and T.; Cylinder Pressman.

*Warren*

ALBERT C. EVANS—Academic.

ZELDA FARNESI—Commercial; Graduated in 3½ Years.

WAYNE FAY—Academic; 3 Block "S's" in Track.

*Albert*

HAZEL FEARY—Academic.

MIRIAM FEINER—Academic; Attended Hyde-Park High, Illinois, '32, '35.

ELEANOR FIELDING—Academic; G. and T. Reporter '35, '36; Graduated in 3½ Years.

ARDATH FINK—Commercial; Class Numerals.

BETTY FITZGERALD — Academic; Graduated in 3½ Years.

TERENCE J. FLANAGAN—Academic; Pres, Land-leveler's Club '35; 2 Circle "S's" Football; Student Control '35.

RICHARD BEECHER FLEMING—Academic; Vice-Pres. Latin Club '35, '36.

ROBERTA FLINTJER—Commercial.

AILEEN FOPPIANO—Commercial; Student Control Fall '35; Graduated in 3½ Years.

*Richard*

*Roberta Flintjer*

LA VERNE BERNICE FOSTER—Commercial.

VEARL FOWLER—Commercial; Track Mgr. '33, '34 Circle "S" Track; Drum and Bugle Corps '32, '33.

BESSIE FRASER—Academic; Graduated in 3½ Yrs.

Twenty-five





JUNE

CLASS



Senior Memories

JOHN BUFORD FREEMAN—Academic; Attended Fremont High, Nebraska '32, '35.

CHARLES FRENCH—Commercial; Medal in Intramural Basketball '35, '36.

JOSEPH E. FROELIGER—Vocational.

HARRY GALLO—Vocational; One Sem. Honor Scholarship; Vocational Student Council '35, '36; G. and T. Intertype Operator.

EVA GARIBALDI—Academic; Sec. Italian Club '35, '36; Attended Galileo High '32-'34.

LOIS GENOCHIO—Academic; One Sem. Honor Scholarship.

ROSIE GIACOVONI—Commercial; Student Control '33, '34.

ANITA GIANELLI—Commercial; One Sem. Honor Scholarship.

BILL REYNOLDS GIANELLI—Academic; Sec. Boys' Science Club, Fall '35; Circle "S's" in Track; Student Control '36.

EVELYN GIANELLI—Commercial; 2 Sem Honor Scholarship.

MYRTLE GIBSON—Academic; Assoc. Editor G. and T. '36, Assoc. Editor "Cub" Edition '35; Graduated in 3½ Years.

EUNICE GILDEA—Academic; Attended St. Mary's High '32-'35.

FRANCES GILKEY—Academic.

AMERIGO GIOVANNONI—Commercial.

LIDA GIOVANNONI—Commercial.

GRACE MARIE GIUFFRE — Commercial; Honorable Mention in Italian.

LLOYD WILLIAM GOEPPERT — Academic; Sec. Hobby Club '32; Red Cross Speaker '35; Winner of Shakespearean Try-Outs.

W. BLAIR GOODMAN—Academic; 2 Sem. Honor Scholarship; Attended Lewis and Clark High, Washington, '31-'33.

JACQUELINE GOODMAN—Academic.

JEAN E. GOODWIN—Academic.

ERNESTINE GOSHORN—Academic.



Senior Memories

BARBARA GOULD—Academic; Troubadours '35, '36; Attended Manteca High '33, '34; Graduated in 3½ Years.

RENEE GOULDING—Academic.

FRANCES MYRLE GRAHAM—Academic.

VIOLET L. GRAVES—Academic.

FORREST M. GREENBERG—Academic; Narrator at Christmas Festival; Safety Week Radio Speaker; Graduated in 3½ Years.

VERA GRIFFITH—Commercial.

DOROTHY GROFT — Academic; Attended Lodi High '32, '33.

BENNIE L. GRONDONA—Academic; 3 Sem. Honor Scholarship; Joke Editor of "Lo Studente Italiano" '34.

DOROTHY L. GROSS—Academic.

DOROTHY LEE GUTHREY—Academic.

WILDER MERWIN HADDEN—Academic.

YUTAKO HAGIO—Academic; Graduated in 3½ Years.

RUTH HANEY—Academic; One Sem. Honor Scholarship; Sec. Junior Red Cross '35, '36; Second Prize in Chamber of Commerce Essay; Student Control, Spring '35, '36.

WALTER HANSEL—Academic; Pres. 12B Class.

HELEN HANSEN—Academic; One Sem. Honor Scholarship; Attended Emerson Jr. High '33.

SYLVIA I. HANSON—Commercial.

LUCILLE HARDING—Commercial.

LUCILLE HARMS—Commercial; One Sem. Honor Scholarship; Sec. Old Eng. "S" Society '36; Old Eng. "S" '35, '36; Hi-Steppers '34, '35, Captain '35; Student Control '36; Cast of "It Never Rains."

BEN HAUGEN—Academic; Band '32-'36.

LEONARD M. HEIM—Commercial.

BETTIJO HENDERSON—Academic; Graduated in 3½ Years.

Twenty-seven





JUNE CLASS



Senior Memories

IVOR HESKETT—Academic, Vocational; Graduated in 3 1/2 Years.

WILLIAM S. HIGGINS—Academic; Basketball Mgr. '32; Circle "S"; Handball Medal.

LORETA MAY HIGHFILL — Academic; Band '34—'36; Orchestra '35; Music Award '35, '36.

MARK WILLIAM HILD—Academic.

BERT F. HILL — Academic; Attended Mountain View High '36; Galileo High '32.

BRUCE HOUSTON HINTON—Academic.

MARTHA HOIT—Academic.

ESMA ELEANOR HOPE—Academic.

HENRY T. HORITA—Vocational; One Sem. Honor Scholarship.

RITA HORWITZ—Academic; One Sem. Honor Scholarship.

PHYLLIS HUBERT — Academic; Attended Sacramento Junior High '32.

ROBERT A. IJAMS — Academic; Pres Pan-Pacific Club '35, '36; Block "S" in Football '35; Attended Tracy High '32—'35.

JOHN RICHARD IMMEL—Academic.

FLORENCE T. INOUE—Academic; Class Numerals.

EVELYN JUNE ISAACSON—Academic; Old Eng. "S" '35, '36.

BILL JENKINS—Academic.

ALVIN THORVALD JENSEN—Academic; Graduated in 3 1/2 Years.

NORMAN JOHNSON—Academic.

CARL JONES — Vocational; G. and T. Intertype Operator.

THEO JONES—Commercial; Class Numerals.

JOHN HAWORTH JONTE—Academic.



Senior Memories

FRANCYS BERNICE KALEND—Commercial; Class Numerals.

CHIYOKO KAMIDOI—Commercial; Graduated in 3½ Years.

TOSHIO KANEDA—Academic.

JOHN MARSH KENNEDY—Academic; One Sem. Honor Scholarship; Band '33, '34; Third Place American Legion Constitution Essay.

LUCILE KENWORTHY—Academic; 2 Sem. Honor Scholarship; Orchestra '33—'36; Girls' String Quartet '35, '36.

WOODROW KIMPTON—Academic; 2 Block "S"s, Circle "S" in Track.

DARREL KING—Academic; Student Control Fall '35.

VERNON S. KING—Academic; Attended Escalon High '32—'35.

MARJORIE KIRKMAN—Academic; Graduated in 3½ Years.

ROGER KITTO—Academic.

BERTHA KLEINSTAUBER—Academic.

PHYLLIS KLINKHAMMER—Academic; Attended Custer High School, Montana '32—'34.

ANIDA KOLB—Academic; Old Eng. "S" Society Spring '35.

RICKARD V. KRUPKE—Academic; Circle "S" in Track; Orchestra '32—'34.

JOE KUBOTA—Academic; Pres. Japanese Club '36; Srgt.-at-Arms Japanese Club '34.

LOIS ELIZABETH LACY—Academic; One Sem. Honor Scholarship; G. and T. Junior Reporter '35; Orchestra '33—'36; Music Award '34, '35; Graduated in 3½ Years.

GEORGE B. LAGORIO—Vocational.

LA VERNE LAGORIO—Academic; Bronze Medal in Italian '35; Cast of "It Never Rains."

JEAN LAMB—Academic.

ROBERT T. LEACH—Academic; Troubadours '35, '36; Band '35, '36; Orchestra '36; Attended Loveland High, Colorado '32—'35.

THURMAN LE CLERT—Academic.

Twenty-nine





# JUNE

# CLASS



1936

## Senior Memories

HATTIE LEE—Academic.

KING LEE—Academic.

EDWARD LEIPELT—Commercial; Band '32—'34.

DOROTHY LEMON—Academic.

ROBERTA LEWIS—Commercial; 2 Sem. Honor Scholarship; Pres. Commercial Eng. Club, Spring '35; Prize in Gravem-Ingllis Essay Contest.

EARL LONGACRE, Jr.—Academic; 1st and 2nd Place in Menzies Awards; 2 Circle "S's" in Track; 2 Circle "S's" in Basketball; 3 Ribbons, 2 Medals in Track.

JACK M. LYONS—Academic; Circle "S" in Football; Orchestra '32—'36.

MARYLY LYONS—Academic; Vice-Pres. Social Service Club '35, '36; Treas. Tri-Y '36.

MAY ANN MC BRIDE—Academic; Sec. Junior Music Club '35, '36; G. and T. Reporter '35, '36.

HAZEL JOY MC CONNELL—Commercial; Playcrafters '35, '36.

BRUCE MC DONALD—Academic; Attended Yreka High '32—'35.

VELMA MC INTIRE—Academic; Sec. Playcrafters '35, '36.

WILLIAM MC MEECHAN, Jr.—Vocational.

HENRY DUKE MC NABB—Academic; Block "S" in Swimming '33—'35; Student Control '35, '36.

MADALINE MC PHEETERS—Academic; 2 Sem. Honor Scholarship.

VIRGINIA MC PHERSON—Academic.

LETITIA MC ROBERTS—Academic.

MARIAN MACEDO—Commercial; Attended Tracy High '32, Antioch High '34, Galt High '34.

LESLEY LENORE MAC LERIE—Academic.

EILEEN MALLETTE—Commercial.

HELEN MATHUES—Commercial.



Senior Memories

LOUIS 'BABE' MAZZERA—Vocational; Block "S" Football '33—'35; Student Control '34, '35; Trophy for Most Tackles '35.

HOWARD MEAD—Academic; Graduated in 3½ Years.

CONSUELO MEDEL—Academic; Attended Ripon High '32—'35.

DOROTHY AGNES MELLO—Academic; Class Numerals.

CAROLYN MELONE—Academic.

CHESTER MEYER—Academic.

KAY MEYER—Academic; Attended Phoenix Union High, Arizona '32—'35.

ROBERT MEYER—Academic; Circle "S" in Swimming; G. and T. Reporter '35, '36.

ERNEST G. MEYERS—Academic; V.-Pres. Stamp Club '33.

JOAN MEYERS—Academic; Custodian Playcrafters '35, '36; Sec. German Club '35, '36; G. and T. Staff '36; Cast of "It Never Rains."

MORRIS E. MEYERS—Commercial.

JOHN LEROY MICHEL—Academic; Attended Roosevelt High, Fresno, '34.

BARBARA JEAN MINAHEN—Academic.

GENE MINGMING—Academic.

LORRAINE M. MINTER—Commercial; Student Control '36.

FRED MIRAMONTES—Vocational; Junior Red Cross Rep.; G. and T. Intertype Operator.

GLENN MITCHELL—Vocational.

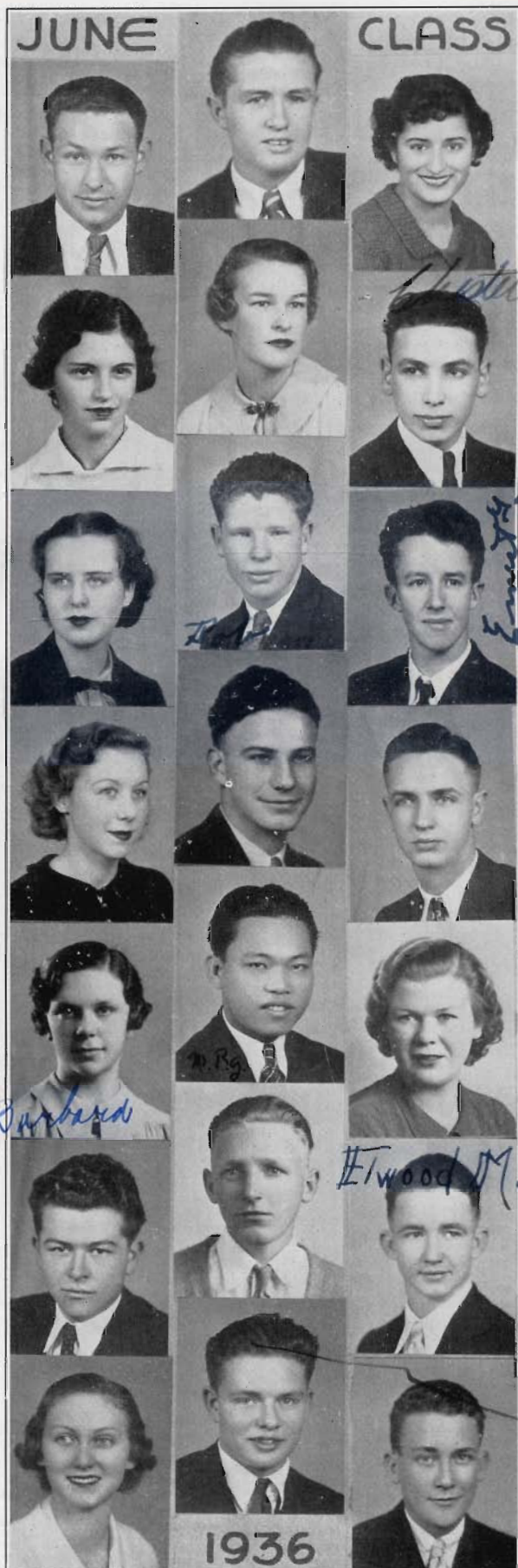
ELWOOD MOFFITT—Academic.

DOROTHY MOLL—Academic.

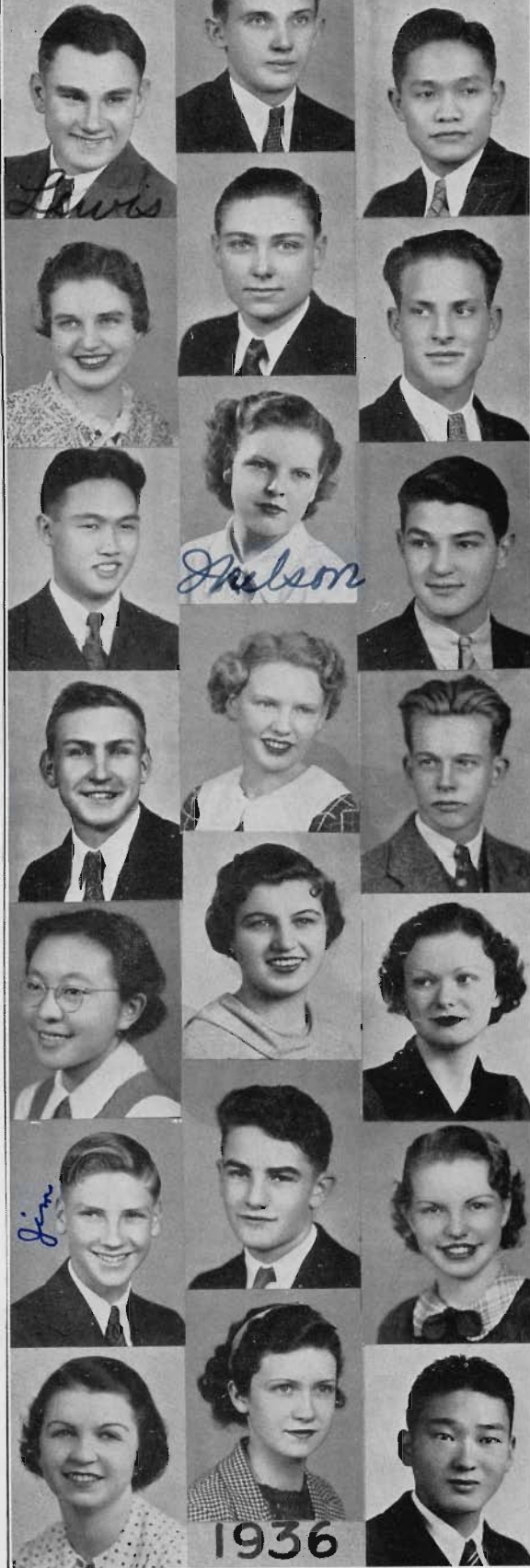
RALPH E. MOORE—Academic.

GORDON MOREY—Academic; Junior Red Cross Rep. '33—'36; Washington-Lincoln Program Speaker '36; Speaker at Pan-Pacific Night Rally; Cast of "It Never Rains."

Thirty-one



# JUNE CLASS



## Senior Memories

LEWIS MORSE—Academic; G. and T. Reporter '35; Orchestra '33—'36; Prize in Gravem-Inglis Essays; Cast of "It Never Rains."

KENNETH MORTON—Academic.

DEMETRIO V. MOSCOSO — Academic; Vice-Pres. Filipino Club '35, '36.

WILMA MOSMAN—Commercial.

GERALD MULLINS—Academic.

JAMES MUSTO—Vocational; 2 Sem. Honor Scholarship; Sec.-Treas. Vocational Cabinet; G. and T. Intertype Operator.

ROY NAKASHIMA—Academic; Graduated in 3½ Years.

EDITH IRENE NELSON—Academic; Graduated in 3½ Years.

GENO NERI—Academic; 2 Sem. Honor Scholarship Pres. Latin Club '35, '36.

WILLIAM NESSLER—Commercial; Ribbon Linden Cross-Country Race; 2 Ribbons Stockton High Cross-Country Race.

DOROTHY NEYMAN—Commercial; Student Control, Spring '35.

JOHN NICHLEY—Academic; Sec. 12B Class.

ROSE YAYE NISHII—Commercial; Attended Brent County High, Colorado '32—'35; Elk Grove Union High '35.

PHYLLIS NORDWICK—Commercial; Student Control '35.

MARY LEAH NORTH—Academic; Attended Hamilton Junior High, Fresno '32, '33; Manteca Union High '34, '35.

JIM NORTON—Academic; Sec.-Treas. Tee-Square Club '35, '36; Graduated in 3½ Years.

TED NORTON—Academic; 1 Sem. Honor Scholarship; Program Chairman Junior Music Club '36; Orchestra '33—'36; Concert Master '36; Boys' String Quartet 3 Sem.

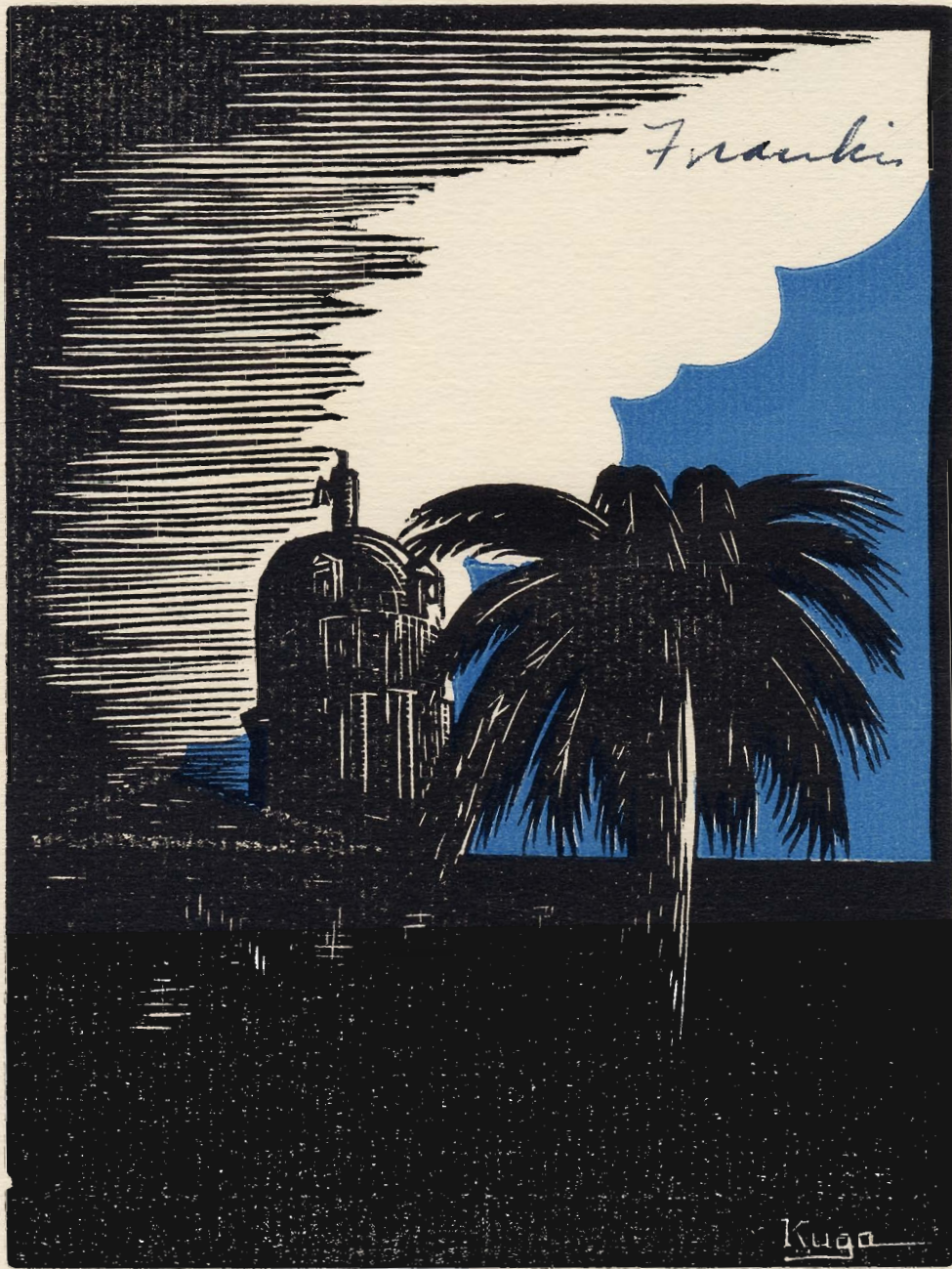
MILDRED BERNICE OLSEN—Academic.

RUTH R. O'REILLY — Academic; Attended Eagle Rock High School '32, '33; Coachella Valley High '33, '34; Glendale High '34, '35; Livermore High '35.

CARLA ORTMAN—Academic; Pres. Social Service Club '35, '36; Junior Red Cross Rep. '35, '36.

YOICHI OSHITA—Vocational; 2 Sem. Honor Scholarship.





—Frank Kuga

**COURT HOUSE**

Senior Memories

BARBARA ANN OWEN—Academic; Junior Red Cross Rep. '32, '33.  
 DOROTHY PATTERSON—Academic; News Editor G. and T.; Graduated in 3½ Years.  
 CYRIL PELETZ—Academic; Armistice Day Speaker '35.

DAN PENGILLY—Academic; Attended St. Mary's High '33; Pescadero High '34, '35.  
 LUCILLE H. PERRIN—Academic.  
 DOROTHY BARBARA PETERSEN—Commercial; Student Control '35, '36.

WARDELL PICCARDO—Academic.  
 JOHN PIZZO—Commercial.  
 M. HARRY PLATEK—Commercial.

BERNICE M. PODESTA—Academic; One Sem. Honor Scholarship.  
 ITALO PODESTO—Academic.  
 EDA PONSO—Commercial.

EARLE PORTER—Commercial.  
 ED PRETL—Commercial.  
 FRANK R. PRINCE—Academic; Attended St. Mary's High '33, '34.

RACHEL MARIE PRIVAT — Academic; Attended Continuation High '33, '34; Orchestra '35, '36; Graduated in 3½ Years.  
 ARMANDO P. PUCCINELLI—Academic.  
 RUSSELL PUGMIRE — Academic; Attended South High, Salt Lake, Utah '34, '35.

BARBARA JANE QUAIL—Academic; Sec. Philo-physean Club '35, '36; Graduated in 3½ Years.  
 PATTY JANE RAILSBACK—Academic.  
 HONORATO RAMOS—Academic.

Thirty-three





JUNE CLASS



Senior Memories

MARJORIE RUTH RASCH—Commercial; Sec. of Commercial Eng. Club '34.

ZELDA ANNE RATTO—Academic.

DAVID REA—Academic; Band '33—'35.

KENNETH REILLY—Academic; Orchestra 3 Years; Graduated in 3½ Years.

JEAN RENNER—Academic; Graduated in 3½ Yrs.

WILLIAM HENRY RENWICK—Academic.

RICHARD M. RIDDELL—Academic; Asst. Stage Mgr. for "It Never Rains".

JOSEPH LOUIS RISSO—Academic; Sgt.-at-Arms Italian Club '35, '36; Stage Mgr. for "It Never Rains".

MIRIAM ANNE ROBINSON—Academic.

VAUGHN ROBINSON—Academic; Circle "S" Track; Attended Walnut Jr. High '32, '33.

RALPH STOLBERG—Academic.

JACK RONALD—Academic; Band '33, '34; Graduated in 3½ Years; Cast of "It Never Rains".

LEONARD S. ROSENBERGER—Academic.

OLIVE ROSS—Academic; Pres. Philophysean Club '36.

MARIAN FAZUYO SAKO—Academic; Attended Girls' High, San Francisco '31.

HELEN SANGUINETTI—Commercial.

MARY JANE SAN JULIAN—Commercial.

DOLORES CECILIA SAXON—Commercial.

GEORGE SCANTLEBURY—Academic.

MILDRED SCHERER—Academic.

ERNA SCHILPP—Academic.

## Senior Memories

VERA SCHMIDTS—Academic.

IOLA MAE WILLIAMS—Academic.

CLOE JULIA SCHURING—Commercial; Freshman Reporter at S. M. High; Attended San Mateo High '32.

DUANE SEWELL—Academic; 4 Sem. Honor Scholarship; Attended Pasadena Junior College High '35.

BILL SHEETS—Academic; One Sem. Honor Scholarship; Orchestra '32-'36.

PHYLLIS E. SHEETS—Commercial.

ELINOR FRANCIS SHEPHERD—Academic; Attended St. Mary's High '32, '33.

JEAN SHEPHERD—Academic; One Sem. Honor Scholarship; Student Control '34, '35; Sec. Student Control '35.

DORIS SHERWOOD—Academic; Pres. Tri-Y, Fall '35; Pres. Philophysean Club, Fall '35; Student Control '36.

MARY E. SIEVERS—Academic.

OPAL SILER—Academic.

JOHNNIE SILVAS—Commercial; Medal for Intramural Basketball Championship; 3 Circle "S's" Basketball.

JOHN SINGER—Commercial; Circle "S" Swimming; Graduated in 3½ Years.

CHARLES SLAGLE—Academic; Attended Merced High '32, '33.

EDWIN SMALLEY—Vocational.

JOYCE SMALLEY—Academic.

BETTY ANNE SMITH—Academic; Sec. Philophysean Club '36; G. and T. Reporter '35, '36; Exchange Editor '35.

DAVID H. SMITH—Academic; One Sem. Honor Scholarship; Band '32, '36.

HELEN MARIE SMITH—Academic; Attended Manteca High '33-'35; Graduated in 3½ Years.

THEDA SMITH—Academic; Orchestra '35-'36; Attended Oakland High '35.

HOBART SNAPP—Academic.





# JUNE CLASS



## Senior Memories

LEORA SPALDING—Academic.

ALBERT SPINELLE—Vocational; One Sem. Honor Scholarship.

BETTY STAMER—Academic; One Sem. Honor Scholarship; Graduated in 3½ Years.

MARION STEPHENS—Commercial; Attended Sequoia Union High, Redwood City '33, '34.

DONALD STINE—Academic; Graduated in 3½ Years.

LEORA STOVER—Academic; One Sem. Honor Scholarship.

MILDRED BELLE STOWELL—Commercial; Circle Numerals.

MALCOLM L. STROUD—Academic; Drum and Bugle Corps.

MASAKO TABUCHI—Academic; Orchestra '35, '36 Graduated in 3½ Years.

BOB C. TAKAHASHI—Academic; Cast of "It Never Rains."

MARION ELIZABETH TARBOX—Academic Class Numerals at Gustine; Band '35; Attended Gustine High '32-'35.

FRED TASSANO—Academic.

MILDRED TAYLOR—Academic.

HENRY TEMME—Academic; Pres. German Club '35, '36; Circle "S" in Football; Block "S" in Football; Sport Editor G. and T. '35, '36; Student Control '36; Cast of "It Never Rains."

TOM TERANISHI—Vocational.

MARJORIE THOMPSON—Academic; Attended Sacramento High '34.

M. SPRAGUE THRESHER—Academic.

NAIDA TITHERINGTON—Academic; 5 Sem. Honor Scholarship; Exchange Editor '35 and Reporter G. and T. '36; Assoc. Editor Annual '36; 1st Orchestra, Fall '33-'36; 2 Yr. Music Award; Quill and Scroll '35, '36.

EDWARD E. TOMODA—Academic; Attended Hamilton Junior High '32.

RICHARD H. TOMS—Academic; One Sem. Honor Scholarship.

GEORGE TOMURA—Vocational.

Senior Memories

GEORGIA TONS—Academic.  
 FRANK TRELUT—Academic.  
 GLORIA FAY TRUNNELL—Commercial.

GEORGE JOICHI TSUSHIMA—Commercial;  
 Treas. Japanese Club '36; Graduated in 3 1/2 Years.  
 LILA TUCKER—Commercial.  
 MARIE TUTTLE—Academic.

STANLEY M. TUTTON—Academic.  
 TAKEO B. UTSUMI—Academic; Pres. Japanese  
 Club '35, '36; Circle "S" Basketball.  
 EDNA MAY VICKROY—Academic.

ANNETTE VOLLMANN—Academic; Vice-Pres.  
 Playcrafters '34, '35.  
 WILLIAM R. WAGNER—Academic.  
 JUNE WARNER—Academic; Attended Manteca  
 High '32, '33.

MARGARET CATHERINE WHELIHAN—Com-  
 mercial.  
 ELLIS VERNE WIDNEY—Academic; Menzies  
 Award '33.  
 ARTHUR WILLIAMS—Academic; 2 Block "S's" in  
 Track.

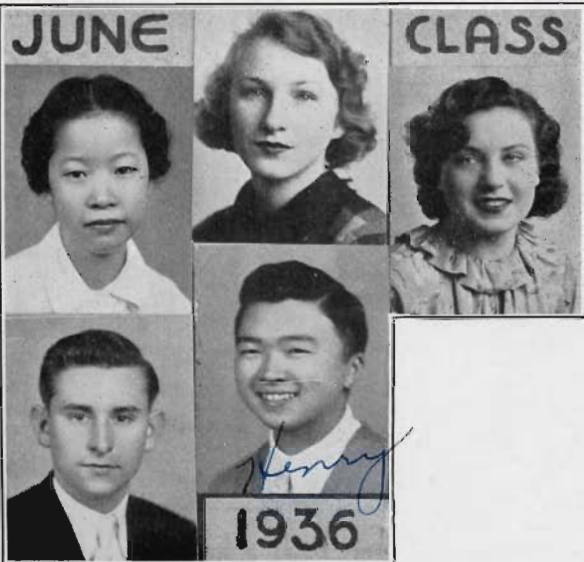
JUANITA WILLIAMS—Academic; Graduated in  
 3 1/2 Years.  
 MARTIN WILSON—Academic; Chairman Washing-  
 ton-Lincoln Program '36.  
 EUGENE WILLSON—Academic; Band 3 1/2 Years.

BUD WITMER—Academic; Attended Ripon High  
 '32, '33.  
 ELSIE WOLF—Commercial.  
 JANE WOLF—Academic; Place in Shakespearean  
 Contest '34.

Thirty-seven







## Senior Memories

MARY J. WONG—Academic; Student Control '35; Graduated in 3½ Years.

JEANNE M. WOODRUFF—Academic; Sec. Girls' League '36; Student Control '35, '36.

BETTY WOODS—Academic.

JOEL WOODSON—Academic; 2 Circle "S's" Swimming; Asst Mgr. Swimming; Attended Rio Vista High '32, Lodi High '32, Sacramento High '32 and Hollister High '33.

HENRY Y. YAMASHITA—Academic; One Sem. Honor Scholarship.

## SENIORS WITHOUT PICTURES

JOE BAVA — Academic; Sergeant-at-Arms Italian Club '35, '36.

GUY BOWMAN—Academic; Band '32-'35; Orchestra '35, '36; Saxophone Quartet '33, '35, '36; Dance Band '32,—'36.

ELMER F. FIELD—Vocational; Attended Hayward Union High '32.

RALPH JONES—Academic.

GAIL B. LEWALLEN—Academic; Attended Rio Vista High '34.

EDWARD BROCK MARSHALL—Academic.

JACK MEHAN—Academic.

LENO PAOLETTI—Vocational.

SONIA E. SCHNEIDER—Academic

RALEIGH WALLACE—Academic.

YAYE YASUI—Commercial.

## Our Class In Homemaking

By Janice Craig, 12A

She taught us of the lovely things  
That help to make a home:

A little mirror that will reflect the light  
From crystal sea-blue grapes;  
A dainty Sheraton stand; gay colored books  
Whose pages inspire to read and meditate;  
The sweetness of old-fashioned pinks,  
The fragrant air of flowered chintz,  
Purple violets nodding from a hob-nail jar,  
The golden glory of a single rose—smile of God  
Spilling its petals on jade-green Chinese shawl,  
Flickering candles shedding a rosy glow over all.

She taught us of the lovely things  
That help to make a home.

*Janice*