

Outstanding June Seniors

MARK PARSONS—Academic; President of Student Body Spring '34; Basketball '31-'34; Track '31-'34; Menzies Award—1st Place Class A '33

EILEEN WILSON—Academic; First Vice-Pres. of Student Body '34; Troubadours '32-'34; Member Girls' Student Control '32, '34; Class Numerals

ERWIN C. FARLEY—Academic; Com. of Welfare Spring '34; Circle "S" in Track '33; Orchestra '30, '31; Vice-Pres. Latin Club '33; Treas. Hi-Y '34; Cast "Believe-It-Or-Not"

BURNELL PANKEY—Academic; Editor of Senior Memory Book '34; Exchange Editor, Rep. G. and T. Weekly Spring '33; Quill and Scroll; Male Lead "Believe-It-Or-Not"

JUNE ELAINE BEECHER—Academic; 2 Sem. Honor Scholarship; Editor of G. & T. Weekly Spring '34; Associate Editor Fall '33; Quill and Scroll

MARTIN GLICK—Academic; 1 Sem. Honor Scholarship; Editor G. and T. Weekly Fall '33; Pres. Boys' Science Club '33, '34; Quill and Scroll; Memory Book Staff '34; Pres. Stamp Club '34

GEORGE A. DITZ—Academic; 1 Sem. Honor Scholarship; Commissioner of Records '33, '34; Rally Committee '33, '34; Pres. French Club '34; Cast "The Sky Train" '33

JOHN MCNOBLE—Academic; 2 Sem. Honor Scholarship

CHARLES SCHIFFMAN—Academic; Chairman Junior Red Cross '33, '34; Custodian '32; Editor Buds O' Blue '33; Staff G. and T. Weekly; Quill and Scroll; Sec. Boys' Science Club '33; Vice-Pres. Junior Tennis Club

FRED WRIGHT—Academic; 2 Sem. Honor Scholarship; Pres. Senior Class '34; 4 Years Track; Managerial Staff G. and T. Weekly; Attended Inglewood High 2 Years

KATHERINE THOMPSON BROWN—Academic; Sec.-Treas. of 12A Class Spring '34; Attended Great Falls High, Montana, '30, '31; Cast "Believe-It-Or-Not"

JAY ROLFE—Academic; Vice-Pres. Senior Class '34; Member Troubadours

BILL CARLILE—Academic; Sport Editor of G. and T. Weekly; Sport Editor of Memory Book '34; Pres. Quill and Scroll; Pres. Hi-Y; Circle "S" in Football

HELEN LUCILLE SILVY—Academic; 3 Sem. Honor Scholarship; Staff Memory Book '34; Staff G. and T. Weekly; Publicity Manager "Believe-It-Or-Not"; Quill and Scroll; Attended Richmond High '32

NORMAN NORDWICK—Academic; 1 Sem. Honor Scholarship; Member of Merit Board Spring '34; Block "S" in Football and Track

MARJORY A. CURRELL—Academic; Gold Seal; 7 Sem. Honor Scholarship; Orchestra '30-'34; Latin Awards

LOUIS BILLONES—Academic; Gold Seal; 5 Sem. Honor Scholarship; Graduate in 3½ Years

ALICE CAULKINS—Academic; Gold Seal; 7 Sem. Honor Scholarship; Quill and Scroll; Reporter G. and T. Weekly; Old English "S"; Pres. Girls' Science Club Fall '33

DELPHINE FERROGGIARO—Academic; Gold Seal; 6 Sem. Honor Scholarship; Member Girls' Student Control '33; Pres. Honor Scholarship Spring '34; Vice-Pres. Italian Club Fall '33; Attended Lowell, S. F., '30-'31

DELWIN WRIGHT—Commercial; Gold Seal; 6 Sem. Honor Scholarship

ROSE EMIKO ITO—Commercial; Gold Seal; 5 Sem. Honor Scholarship; Treas. Japanese Club '33, '34; Graduate in 3½ Years

STUDENT COUNCIL



CLASS OFFICERS



OTHER ACTIVITIES



SEAL BEARERS





ROGER ABBOTT—Academic; 5 Sem. Honor Scholarship
 DORA BELL ALDRIDGE—Commercial; 2 Awards in Sports; Red Cross Representative
 FRED ALLISON—Academic; Vice-Pres. Spanish Club, '32, '33



HERBERT ANDREWS—Academic
 PAULINE R. ARBINI—Commercial; Italian Award '33; Class Numerals
 VALERA ARNS—Commercial; Attended Fort Madison High School, Iowa, '30, '31



FRED AULT—Academic; Vice-Pres. Spanish Club
 CLAUDE AUNGER—Commercial
 DORYCE BACON—Academic; Class Numeral; Cast "Believe-It-Or-Not"



LAURA BAILEY—Academic
 DHANA SINGH BAINS—Academic
 FLOYD ERVIN BALSLEY—Vocational; Troubadours '33; Pres. Woodcrafters '33, '34



PRIMITIVO S. BANIAGA—Academic
 DELBERT BARCUS—Academic; Attended Madera High
 SYDNEY BARNETT—Academic



BESSIE MARIE BARTHOLOMEW—Academic
 ROBERT BASTIAN—Academic; Cartoonist G. & T. Weekly '33
 PEARL BEAVER—Academic; Band and Orchestra '31-'33



LOIS RUTH BEEZLEY—Academic; Editor "Lo Studente Italiano"; Cast "Believe-It-Or-Not"
 AUDREY BEHRNS—Academic; Sec.-Treas. 12B Class Fall '33; Class Numerals
 AILEEN VIRGINIA BIRD—Academic; Sec.-Treas. Philophysean Club Spring '34; Class Numerals



STEPHEN BLEWETT—Academic
 ANNE BLOATHNER—Commercial; 1 Sem. Honor Scholarship; Class Numerals
 ROBERT C. BLOSSOM—Academic

VIRGIL BONDON—Academic; Circle "S" in Basketball; Attended Dos Palos and Campbell Highs

LOUIE BRAGHETTA—Vocational

MARGARET CLAIRE BREED—Academic; 4 Sem. Honor Scholarship; Attended Petaluma High, '31-'33

BOB BRISCOE—Academic; Attended St. Mary's 3 Years

MELBA BROWN—Academic

ARTHUR BUETTNER—Academic

JACOBA BUNT—Academic

AILEEN BUOY—Academic

LOUISE JEANETTE BURDICK—Academic; Latin Award '31

DOUGLAS CAMPBELL—Academic; Band

SIGURD CARLSON—Academic

ESTHER LOUISE CARPENTER—Academic; Attended San Jose High 2 Years

LAVERNE CARTER—Academic

THERON CARY—Academic

JOSEPHINE CAVEY—Academic; 3 Sem. Honor Scholarship

ADELIN LAFERNE CHINCHIOLO—Academic; Class Numeral

EDDIE CHIOTASSO—Academic

VIOLA E. CLAUSSEN—Commercial; Class Numerals

MAMIE A. CODY—Commercial; 2 Circle "S's"; Red Cross Representative '33

TOM COE—Academic

ELAINE T. COLLIVAS—Commercial; Class Numerals

RUTH M. COLLIVER—Academic; Orchestra 1 Year; Girls' String Quartet 1 Year; Reporter G. and T. Weekly; Girls' Student Control Spring '34

GWENDOLYN CONARD—Academic; Attended Armijo High '31, '32

HENRIETTA CORDWAY—Academic





CLAUDE CORPENING—Academic; Menzies Award; 2 Circle "S's"
 LUCY R. CORRADI—Commercial; Class Numerals
 JANET COX—Academic; Vice-Pres. Girls' League Spring '34;
 Cast "Believe-It-Or-Not"



EVELYN JUNE COX—Academic
 DOROTHY V. CURRELL—Academic; Orchestra '30-'34; Latin Awards
 ALBERTA LOUISE DASSO—Academic; Pres. Philophysean Club Spring '33; Manager Girls' Tennis Club '33; Latin Award '31



LORENE M. DAWSON—Commercial; Class Numeral
 DOUGLAS DEAPER—Academic; News Editor, Columnist, Reporter G. and T. Weekly '33, '34
 MARTHA DE GANNA—Academic; Manager Girls' Tennis Club '34; Old English "S"; Class Numerals



PHYLLIS DE GANNA—Commercial; Class Numerals
 JOSEPH DELUCHI—Commercial; 1 Sem. Honor Scholarship
 ALICE DE MATTEI—Academic



CHARLES DE WITT—Academic; Menzies Award Class C-First Place, Class B-Second Place, Class A-Second Place; Band '31; Attended Lodi High School '30, '31
 THOMAS DIXON—Academic; 3 Block "S's" in Football
 ALINDE W. DOHRMAN—Academic; 1 Sem. Honor Scholarship; Member Troubadours



RICHARD DOMENCH—Academic; Cast "Rosina es Fragil"
 DICK DONNELLY—Academic; "Block S" in Track; Track Manager '32, '33; Menzies Awards '33, '34; Member Boys' Student Control '33, '34; Assistant Stage Manager "Sky Train" '32
 DOROTHEA DONNELLY—Academic; Member Girls' League Cabinet; 1st Prize in Design—McKee Art Contest '33; Class Numeral



CHARLES DRACE—Academic; 5 Sem. Honor Scholarship; Block "S" Football; Pres. Tee-Square Club '34
 JEAN EDEN—Academic
 ARTHUR EMERSON—Commercial



EMILY B. ENCINAS—Commercial; Class Numerals; Attended Herbert Hoover Junior High, Berkeley '30
 NADINE ESPLEN—Academic; Vice-Pres. Tri-Y, Spring '34; Sec. Treas. Girls' Science Club Fall '33
 MIKE FARACLAS—Academic; Troubadours Spring '34; Red Cross Representative '34

ANTONE FICOVICH—Academic; 1 Sem. Honor Scholarship;
Member Boys' Student Control '33, '34

DORIS FINKBOHNER—Academic; Treas. Tri-Y Club Fall '33

ANTHONY FIRPO—Academic; 1 Sem. Honor Scholarship

ETHEL FLACK—Academic; Staff G. and T. Weekly

VIRGINIA FLAMMER—Academic

ROSE FLEMING—Academic

ROSE FORENTI—Commercial

NAOMI FUQUA—Commercial; 4 Sem. Honor Scholarship; Mem-
ber Girls' Student Control '32, '33, '34

RUTH R. GARROW—Commercial

MONROE GASKILL—Vocational

BELVA GERKE—Academic; Class Numerals; Attended Fremont
High '30

HELEN GILBERT—Academic; Old English "S"; Class Numerals

LOLLY MARY GIOVANNETTI—Commercial; Circle "S"

FRANK GIOVANNONI—Academic

LESLIE GLENN—Academic; Band 1 Year; Orchestra 1 Year

JEAN GOODMAN—Academic; Attended Peoria High, Illinois, 2
Years

ESTHER GOODRICH—Academic

DOROTHY GORDON—Academic; Attended St. Mary's High 3
Years

LLOYD REYNOLD GRAVES—Commercial; Attended Roosevelt and
Castlemont Highs '32

GEORGE GREAVES—Vocational; 2 Sem. Honor Scholarship;
Block "S" Track; Intertype Operator G. and T. Weekly

BERYL GREENBERG—Academic; Class Numerals

THERESA GRONDONA—Academic

HARRY GUIBOR—Academic; Band '30, '31

CLIFFORD GUY—Academic





RALPH HADDEN—Academic
ELLOUISE HAGENE—Academic
PHILLIP HALL—Academic



ELI HAMMEL—Vocational
VIRGINIA YVONNE HARPER—Academic; Member Girls' Student Control 3 Years; Class Numerals
RAYMOND HARTLEY—Vocational



HARRY HARVEY—Academic; 1 Sem. Honor Scholarship; Block "S" Swimming '33, '34; Band '31
JUNJI HASEGAWA—Academic; 3 Sem. Honor Scholarship
NANCY TREMAIN HATCH—Academic



EDITH MYRLE HATCHETT—Commercial; Class Numerals
MARTHA HAWLEY—Academic; Staff G. and T. Weekly; Girls' Student Control '32, '33
JOHN R. HAWTHORNE—Academic



JACK HAYRE—Academic; Band 3 Years; Orchestra 2 Years
EULAH HEENEY—Academic
MILTON HEFFNER—Commercial



HERBERT H. HEIM—Vocational
MORRIS HENDERSON—Academic; Attended North Central High, Spokane, Wash., '30-'32, and Sacramento High '33
BARBARA DEAN HEWLETT—Academic



DALE HIGDON—Academic; Band 3 Years; 1st Prize Oil Painting McKee Art Contest; Pres. Hobby Club '33; Pres. Camera Club '33; Cast "Believe-It-Or-Not"
NORMAN HOOD—Academic; Band '30-'33
ANNA L. HORTON—Academic; Treas. Spanish Club '32



STANLEY A. HOWELL—Academic; Member Boys' Student Control Spring '33; Pres. Hi-Y Fall '33
GLADYS HUGHES—Academic; Joke Editor G. and T. Weekly; Cast "Believe-It-Or-Not"
CLIFFORD HULL—Academic; 2 Menzies Awards

HENRY HUNT—Commercial

VIRGINIA IGO—Academic; 1 Sem. Honor Scholarship; Graduate in 3½ Years

MASUKO IKAWA—Academic; Attended Mountain View High '31

RUTH IKEDA—Academic; 6 Sem. Honor Scholarship

TOMOO ITO—Academic; Pres. Japanese Club '33, '34

CLIFFORD JAKEL—Academic; News Ed., Exchange Ed., Staff G. and T. Weekly; Editor of "Buds O' Blue" '33; Sec. Quill and Scroll Spring '34

VICTORIA JENSEN—Academic

BEVERLY JONES—Academic; Attended Phoenix High '31, Bret Harte High '32

MARGARET JONES—Academic; Old English "S"; Vice-Pres. Old English "S" Soc. Spring '34; Sec. Camera Club Fall '33

DAVID JORY—Academic

ALICE KAWAMATA—Academic; 1 Sem. Honor Scholarship

HARRY KEMP—Academic; Attended Wayne High, Neb., '31

HERMA KLEMEYER—Academic

GODFREY KNAPP—Academic

BURT KNOWLES—Academic; Band 2 Years

HENRY KRAMAR—Academic; Block "S" in Track; Menzies Awards—2nd Fall '30, 1st Fall '32, 1st Spring '33, 2nd Fall '33

DOROTHY LANPHEAR—Academic

LOUIS LAVERONE—Academic; Attended St. Mary's High and Lowell High, S. F.

ALYSE LEARY—Commercial; Member Girls' Student Control '33, '34; Class Numerals

FRANCES ELIZABETH LEWIS—Commercial; Class Numerals; Circle "S"

FRANK LEWIS—Academic; Attended Selma High 2 Years

GEORGE LEWIS—Academic; Orchestra 4 Years.

FRED LIEGINGER—Academic; Block "S" in Track; Band '31, '32

FRANCES LITTLE—Academic; 4 Sem. Honor Scholarship





BETH LOU—Academic; 1 Sem. Honor Scholarship; Member Girls' Student Control Fall '31; 2nd Prize in Short Story Contest Fall '32

KENOW LOU—Academic; Sec.-Treas. Spring '33, Vice-Pres. Fall '33 Chinese Club

LUCILLE LUIS—Academic; Class Numeral; Attended Livermore High 1 Year, Half Moon Bay High 1 Year



EUNICE LYONS—Academic

JANICE MCAFEE—Commercial; Class Numerals

HAROLD MCBRIDE—Academic



RICHARD MCCANN—Academic; Band and Orchestra 3 Years

HELEN MCCLORY—Academic; Pres. Social Service Club Spring '34

BEVERLEY MCGHAN—Academic



MARIE MCLACHLAN—Academic; Ed. Girls' Sports G. and T. Weekly; Vice-Pres. Philophysean Club '34

CAMILLE MADRID—Academic; Attended Rio Vista Joint Union High '31-'33

WILLIAM MANN—Commercial



DOTTA RUTH MANNHALTER—Academic; 1 Sem. Honor Scholarship; Attended Salinas High '31, '32

NADINE MARINO—Academic

WILSON MARSH—Academic



GILBERT MATA—Academic; Block "S" and Circle "S" in Football

IDAGAIL MATHEWS—Commercial; Orchestra '30; Band '31; Class Numerals

ALMA IRENE MAYBERRY—Commercial; Member of Merit Board Fall '33, Spring '34



IRENE MAZZA—Academic; Circle "S"; Gold Medal in Italian '31

LUCILLE MENKING—Academic; Circle "S"; Class Numerals

WILBUR D. MILLER—Academic



GEORGIA MINAHEN—Academic; Orchestra 4 Years

MILDRED MIRIKITANI—Academic

ERNEST MOORE—Academic; Attended St. Mary's High '31, '32



BUNGALOW
FRED WRIGHT

MARY MOORE—Academic; Class Numerals

PHYLLIS MORAN—Academic; Member Girls' Student Control '34; Class Numerals

JUDITH MORATH—Commercial; Attended Richmond High '32

ANDREW J. MORRIS—Academic

JOHN MOUNTZ—Commercial

MAXINE M. MUSSETT—Academic; 3 Sem. Honor Scholarship; Staff G. and T. Weekly; Circle "S"; Class Numerals

KAZUO NAKABAYASHI—Academic; 3 Sem. Honor Scholarship

SHIGEKAZU NAKABAYASHI—Academic; Attended Mifune Middle School, Kumamoto, Japan

CHIYONO H. NAKAMORI—Academic; Circle "S"; Class Numerals; Graduate in 3½ Years

ROBERT NESSLER—Vocational; Circulation Manager G. and T. Weekly; Block "S" in Track

KAZUKO NISHIOKA—Commercial

HARVEY ODELL—Academic

PETER OHM—Vocational

MAXINE M. OLIVER—Academic; Old English "S"; Class Numerals; Vice-Pres. Girls' Science Club Spring '33

JESSE OLNEY—Academic

BARBARA M. OTT—Academic; Class Numerals

BILL D. OWEN—Academic; 3 Circle "S's" in Basketball; Band 3 Years

CLAIR OWENS—Academic

OLIVE G. OWEN—Academic; Class Numerals

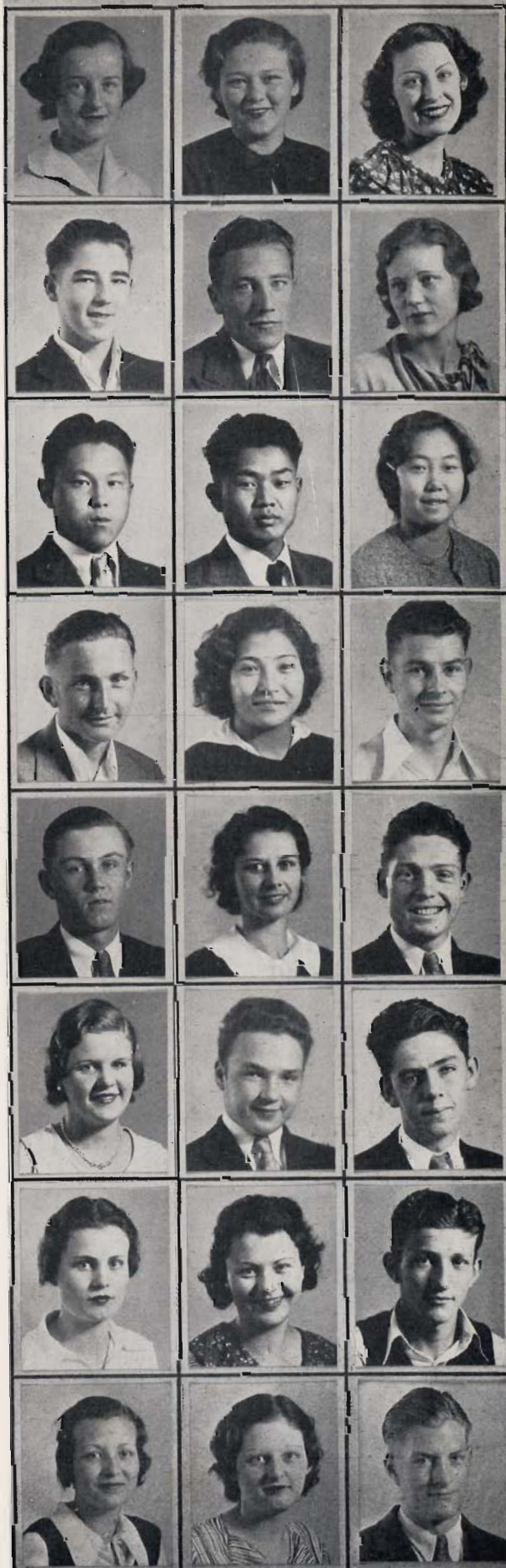
SHIRLEY ELIZABETH PACE—Academic; Attended Los Gatos Union High '31, Palisade High '32, '33; Cast "Believe-It-Or-Not"

TONY PAGANO—Academic

HELEN MARIE PANDO—Academic

JANE E. PARNELL—Academic; Rep. G. and T. Weekly; Old English "S"; Class Numerals

ELMO PATTERSON—Academic; Swimming Team '33, '34; Block "S"





MARSHALL LEWIS PEAL—Academic; Staff G. and T. Weekly '33; Pres. Stamp Club '32, '33; Sec. Hi-Y Club '33

BOBBIN GAY PECK—Academic; 2 Sem. Honor Scholarship; Pres. Playcrafters Fall '33; Vice-Pres. French Club '32; Feminine Lead "Believe-It-Or-Not"; Cast "Seventeen"



DORA JULIA PEDRUCCI—Commercial; Circle "S"; Class Numeral

HAROLD PELETZ—Academic; 4 Sem. Honor Scholarship; Pres. Honor Scholarship Society Fall '33, Spring '34; Pres. Key Club '34

SADIE PERINI—Academic; Rep. G. and T. Weekly; Staff "Lo Studente Italiano"; Circle "S"; Class Numerals



MARY PERRY—Academic; Class Numerals

GEORGE PICCARDO—Academic

ROBERT PIERCE—Academic; Block "S" in Track '34; Treas. Playcrafters '34; Attended Sacramento High '32, '33

BUELL PIGG—Academic; Band, Orchestra; Ass't Stage Manager "Believe-It-Or-Not"



PEARL PIRAINO—Academic; Staff G. and T. Weekly; Business Manager "Believe-It-Or-Not"

BOB POPE—Academic

MARGARET PORTER—Academic



JACK E. POWERS—Academic

BILL JASON PRIEST—Academic; Member Boys' Student Control Spring '34; Coach in Baseball Class '33, '34

THOMAS P. PURINTON—Vocational; 1 Sem. Honor Scholarship



EDITH QUINN—Academic

ELLEN REDMOND—Commercial

ROBERT REVEAL—Vocational



BILL RICE—Academic; Band 4 Years

SOPHIE RICK—Commercial; Class Numerals

MARY RISHWAIN—Commercial



PATRICIA ROBERTS—Academic; Member Girls' Student Control Fall '33; Pres. Spanish Club '33, '34; Sec.-Treas. Social Service Club Spring '34

FLORENCE ROBINSON—Academic; Sec.-Treas. Girls' Science Club Fall '31

PETER ROBUSTELLI—Commercial

ED ROSASCO—Academic

GEORGE ROSEN—Commercial

CLARE EVELYN SACCO—Commercial; 2 Sem. Honor Scholarship;
Member Girls' Student Control '33

BERNICE SANDERS—Academic

ALFRED SCHAEDE—Vocational; 4 Sem. Honor Scholarship; In-
tertype Operator G. and T. Weekly

MARGARET SCHAEENEMAN—Academic; 1 Sem. Honor Scholarship

ROBERT W. SCHAEENEMAN—Academic; Orchestra, '33, '34

LESTER H. SCHNEIDER—Vocational

ANSELL SCOTT—Academic; Band 4 Years; Cast "Believe-It-Or-
Not"

CHESTER SCOTT—Academic; Cast "Rosina es Fragil"; Lodi
High '31

BARBARA MAE SHANKEL—Academic; G. A. A. Ex. Com. '33,
'34; Latin Award '31; Old English "S"

HARRY SHOUT—Commercial

AUDREY SMALLEY—Academic; Class Numerals

ALICE MARIE SMITH—Commercial; Member Girls' Student Con-
trol '34; Class Numerals

~~HARMON SMITH—Commercial; "Seven Last Words of Christ"~~

DAISY ROSIE SOLARI—Commercial; Member Girls' Student Con-
trol Spring '33; Class Numerals

MARY JO SOLINA—Commercial; Attended Madera High 2 Years

DUANE SOUTHARD—Academic; Orchestra '30-'33

ROBERT SPEELMAN—Academic; Attended High School in Jean-
nette, Pa., '29, Pierceton, Ind., '30

DAVID P. STAGNARO—Academic

HENRY STAGNARO—Academic; Block "S" in Football

MARY STANFORD—Academic; Latin Award '31

WALTER STARIN—Vocational

WILLIAM STONE—Academic





RUTH STRETCH—Academic; Exchange Ed. G. and T. Weekly; Sec. Pan-Pacific Club Spring '32; Attended Manteca High '31

ELMER STROPPINI—Academic

SEWARD CARLETON STROUD—Academic; Cast "Believe-It-Or-Not"



MEGUMI SUGI—Academic

ISRAEL SWEET—Academic

BETTY SWIFT—Academic; Circle "S"; Vice-Pres. Pan-Pacific Club '33



MISAO TAKAYAMA—Academic

ROBERT TANAKA—Academic; Band '32-'34; Attended Lodi High '31, '32

LOIS THALHAMER—Academic



DALE THOMPSON—Vocational; 1 Sem. Honor Scholarship; Inter-type Operator G. and T. Weekly

GLENN TUPPER—Commercial

ALEX TURKATTE—Academic; 5 Sem. Honor Scholarship; 3 Latin Awards; Italian Award '32; Editor "Lo Studente Italiano" '34



BARTLETT UTT—Academic; Staff G. and T. Weekly

THELMA VENTRE—Commercial; Class Numerals

JOHN VERKERK—Commercial



NELL VICKROY—Academic; 2 Sem. Honor Scholarship; Latin Award; Class Numerals

PHILOMENA VILLAMOR—Academic; Circle "S"; Pres. Filipino Club '34

VELMA VOSBURGH—Academic; Circle "S"; Class Numerals



CHRIS VUKOVICH—Vocational

FRANCES WAGNER—Academic; Troubadours '32, '33; Sec.-Treas. Girls' League '34; Circle "S"; Class Numerals

ELSIE WALLIS—Commercial; Attended Modesto High 3 Years



BETTY WEBB—Academic; Troubadours '32-'34

MARGARET WEBB—Academic

JEANNE WEEKS—Academic

JACK WELCH—Academic
 BOB WENTZ—Academic; Member Boys' Student Control '34;
 Treas. Playcrafters '33, '34
 BERT WICKARD—Academic

GWENDOLYN WILLIAMS—Commercial
 ROSS WILLIAMS—Academic
 GEORGE WILLSON—Academic; Band 4 Years

HARRY WINDELER—Academic; Circle "S" Football '32
 WILMA EVELYN WISE—Academic; Attended University High,
 Oakland, '30-'33
 GEORGE WOHRLE—Academic; Circle "S" Track '32; Pres.
 German Club '33, '34; 4 Sem. Honor Scholarship; Graduate
 in 3½ Years

JOHN WONG—Commercial
 LILI J. WONG—Commercial; Attended Galileo High, S. F., 1
 Year
 HELEN WOODARD—Academic; Attended High School in Fra-
 zee, Minn.

RUTH WOODS—Academic; 6 Sem. Honor Scholarship
 HORACE WRIGHT—Commercial
 WILLIAM WRIGHT—Commercial

LEWIS YIP—Academic SAM YOST—Academic
 JAMES ZAPPETTINI—Academic

JAMES ZILEMBO—Vocational MARIE DOLMAN—Academic
 WILLIAM G. HINTON—Academic; Attended Eureka High '30-
 '32 and Manual Arts High, L. A., '33

June Graduates Without Pictures

FLORENCE BLACK—Academic; Phoenix High, Arizona,
 JOHN CAZALE—Commercial ['31, '32
 WILBUR CHALLIS—Academic; Polytechnic High, S. F.
 '30-'34
 NORMA DELPHIA—Academic; Tracy High '30, '31
 FRED ELSOLZ—Vocational
 WILBUR FUHRMAN—Academic; Polytechnic High, San
 ALBERT GUERRERO—Commercial [Luis Obispo
 EDITH HOLLINGER—Commercial
 ADOLPH MOROTTI—Academic; St. Mary's High 2 Years



MABLE JANE MORRIS — Commercial; Old
 English "S"; Band '31, '32
 ARTHUR NAKASHIMA—Commercial; 1 Sem.
 Honor Scholarship
 EVARISTO QUILENDERINO—Academic; Vigan
 LOUIS RUVKIN—Academic [High, P. I., '28
 NORVAL WEIRICH—Academic; Band 4 Years