

SENIOR MEMORIES



RAYMOND AH TYE—Academic; 2½ Semesters Honor Scholarship; Pres. Chinese Club '32; Circle "S" Track; Reporter and Cartoonist on Weekly '32; Prize in Robert Title McKee Art Contest

BERTHA M. AKIMOTO—Academic; Gold Seal, 5 Semesters Honor Scholarship; Pres. Japanese Club '32, '33; Girls' League Program Committee

CLARENCE ALDERS JR.—Commercial; 4 Letters Basketball

GLADYS VIRGINIA ALTREE—Commercial; 2 Class Numerals

NATALIE AMANN—Academic

GEORGE EDWARD AMARAL—Vocational

ELEANOR ANDERSON—Academic

MARY ANN ARBANASIN—Commercial; Class Numerals

EDITH ARDLEY—Academic; Circle and Class Numerals; Circle S.

ANICETO BALLESTRA—Academic; Pres. Filipino Club '32; Vice-Pres. Filipino Club '33

ALBERT BALMA—Vocational; Pres. Radio Club '32

CATHERINE BARKETT—page 34

LELA MAY BARLEY—Academic; 1 Semester Honor Scholarship

PALMYRA C. BAROSSO—Commercial; Class Numerals

MARGARETTA BARROWS—Academic; Pres. Tri-Y '32; Attended Miami High, Oklahoma '29, '30

ELIZABETH BARTLETT—Academic.

ALFRED BAVA—Commercial

MARGUERITE P. BECART—Commercial; Class Numerals.

ETHEL BEST—Academic; Christmas Play '31; Danced in "Hiawatha"

ARCHIE BETTS—Academic; Attended Oakland High 1½ years

BERNARD GILBERT BIALKIN—Academic; Rally Committee '31

JOSEPH BIANCHINI—Vocational

WILLIAM D. BLACKFIELD—Academic; Publicity Manager Sports '32, '33; Student Control '32; Rally Committee '32, '33

PEER BLADH—Commercial

ALEX BLOATHNER—Vocational; 2 Semesters Honor Scholarship

ESTHER BOCCOLI—Academic; Medal in Italian; Attended Polytechnic High School '29, '30

HENRY LESTER BOSCH—Academic; Circle S Basketball

BETTE BRADLEY—Academic; 5 Semesters Honor Scholarship

BERNARD A. BROADDUS—Academic; Rally Committee '32, '33, Band '30; Attended Moran Prep. '31.

VIOLET BRODEHL—Academic; Attended Lodi High '29

HELEN B. BROKER—Academic

ALICE M. BROOKING—Academic; 1 Semester Honor Scholarship; Attended Boise High, Idaho, 1 Year; Attended Vancouver High, Washington, 2 Years

MARGARET BROOKS—Academic; Sec.-Treas. Liberatus Club '32; 2nd Prize Poetry '32; Student Control '32, '33

ARTHUR BROWN—Academic; Latin Awards '31, '32

DOROTHY BROWN—Academic

HELEN BROWN — Academic; Attended Great Falls High School, Montana, '29-'30, '30-'31

JESSIE TUNNELLE BROWN—Academic; Gold Seal, 7 Semesters Honor Scholarship; Sec. Honor Scholarship Society '32

LILLIAN B. BUCKNER — Academic; Attended Alhambra Union High, Martinez, '29-'31; Attended Biggs Union High, Biggs, '31-'32

EVA M. BUDISELICH—Commercial; Class Numerals

MARGARET GERTRUDE CALLAHAN—Commercial; Circle and Class Numerals

LAURA JEAN CAMERA—Commercial; Circle and Class Numerals

AUDREY CAMICIA—Academic; Class and Circle Numerals, Circle S, Old English "S"

NEVILLE CAMICIA—Academic; G. A. A. Awards

GEORGE N. CANLIS—Academic; 2nd Vice-Pres. Student Body '32—Sgt. Arms German Club; Treas. Block "S" '32; 2 Block "S" in Football; Reporter on Weekly '32; Student Control '30, '31, '32



SENIOR MEMORIES



WILLIAM Z. CARDER—Vocational; Pres. Vocational Boys Cabinet; Circle "S" '29, '30; Band '29; Member Senior Ring Committee; Class Day Com.; Senior Garb Com.

PEARL CARRUESCO—Commercial; Circle and Class Numerals

ALICE E. CASE—Commercial; Class Numerals; Attended Modesto High '29

AILEEN REBECCA CHAMBERLAIN—Academic; Old English "S," Silver Emblem; Attended Orsi High '29

RUTH CHAPMAN—Academic

THEOLA CHAPMAN—Academic; Class Numerals and Circle S

ROBERT JOHN CHARLES JR.—Academic; Vice-Pres. Torch Club '29; Treas. Hi-Y '33; Band '31-'32

FLORENCE CHOI—Academic; 2 Semesters Honor Scholarship; Circle and Class Numerals

HERMAN C. CHRIST—Academic; Attended Richmond High '31

LA VERNE CHRISTENSEN — Commercial; Senior Council; Class Numerals and Old English S

EDNA MAY CLARK—Academic; 5 Semesters Honor Scholarship

ROSE CLAY—Academic; Sec.-Treas. Italian Club '32; Class Numerals, Circle S, Old English S; Cast of "Cent' Anni"

ELINOR CLEGHORN—Academic; Attended Katherine Branson School '28-'30; Attended the Douglas School '30-'31

ELEN ORENE CLOUD—Academic Marshfield High School, Missouri '29-Jan. '32

FRANK A. COCHELLA—Academic

CHARLES C. CODY—Vocational

BETHEL COLLIS—Academic; Attended Immaculate Conception Academy, San Francisco '30-'31, '31-'32

VIRGINIA L. CONWELL—Commercial; Class Numerals

BERTHA E. COOK—Commercial

LEONARD COTTER—Vocational; 2 Semesters Honor Scholarship; 3 Circle S's, 1 Block S Football; Intertype Operator; Honor Scholarship Certificate for 2 Consecutive Semesters

WALT COTTLE—Academic; Pres. Key Club '31-'33; Block S Swimming; Business Manager "The Sky Train"

BEDFORD COX—Commercial

SENIOR MEMORIES

JOHN CLIFFORD CRAIG—Academic; Sec. Key Club '31-'32

ELLEN M. CREWDSON — Commercial; Attended Salinas Union High '29-'32

LELA MAY CROCKER—Commercial; Circle and Class Numerals

CLARENCE CROMER—Commercial

EBITH ELIZABETH CROSS—Commercial

MARJORIE CULVER—Academic

MARGARET PEARL CURTIS—Commercial

IRVING DARK—Academic

MELBA LOIS DAVIS—Academic; Circle and Class Numerals

ARTHUR DETTWEILER—Academic

HELEN DE VOSS—Academic; Vice-Pres. '32 and Pres. Old English "S" Society '33; Circle and Class Numerals, Old English "S", Big White "S"

ELOISE DE WHITT—Academic; 4 Semesters Honor Scholarship; Circle and Class Numerals, Circle S

ALBERT DIETRICH—Vocational

WILLIAM DIETRICH—Academic; Latin Prize '29

BOB DIETZ—Academic

NINA WANDA DOOLEY—Academic; Attended Placer Union High School 2½ Years; Art Prizes at Calif. State Fair '29, '30

FERN DRISCOL—Academic

EDWARD DUPONT—Academic; Menzies Medal; Band '30

WENDELL EARLEY—Commercial

JACK EARLY—Academic; 1 Semester Honor Scholarship; Band '30, '31; Orchestra '32-'33; Latin Prize '29; 2nd Pacific Coast Ad Writing Contest '33; Student Control '32-'33 Commissioner of Advertising '33

LYNN E. EBEL—Vocational; Vice-Pres. Woodcrafters '33

CARROLL EICHENBERGER—Academic; Circle S Basketball; Band and Orchestra '29





BILL EK—Academic; Attended Auburn High Sept.-Nov. '32

MARY J. ENCINAS—Commercial; Block, Circle, and Class Numerals and Circle S; Attended David Starr Jordan High School at Los Angeles '29

ELEANORE LUCILLE ENGDALL—Commercial; Class Numerals

JOHN H. ENGLAND — Academic; Attended Lake Charles School, Louisiana, 1st Semester '29; Attended Lodi Union High '31-'32

EDWARD ERICKSON—Academic; Guard and Tackle Staff

MARY ERRECART—Commercial

ALBERTA ELEANOR EUGLEY—Academic

SARA FARNSWORTH—Academic

AURORA FILIPPINI—Commercial

BONNIE FINKBOHNER—Academic; Gold Seal, 7 Semesters Honor Scholarship; Student Control '30-'32

HARRIETTE FISH—Academic

SADIE FONG—Academic; 1 Semester Honor Scholarship; Student Control '32-'33

WILLIAM FORWARD—Academic; 2 Semesters Honor Scholarship (Oakland); Circle S; Attended Westlake Jr. High '29; and Technical High, Oakland, '30

JOHN K. FUJIMORI—Academic; 3 Semesters Honor Scholarship; Went to Sacramento with Chemistry Team '32

IRENE FUJIMOTO—Commercial

HIROSHI FUKUYAMA—Academic

AMABEL MARYAN FUNK—Commercial; Garb Committee; Class and Circle Numerals and Old English S; Column Writer in Commercial Paper

CLARA IRENE GARDEN—Academic; Sec.-Treas. Girls' League '33; Pres. Philopseyan '32; Latin Prize '29

MERLANNE GARDNER—Academic; Gold Seal, 5 Semesters Honor Scholarship; Sec. Hobby Club; Sec. German Club; Pres. Honor Scholarship '33; Numeral and Circle S; S. H. S. 1st Prize and 1st Prize in Haggin Memorial Museum Contest for Poem '32

VIRGINIA LILLIAN GARDNER—Academic; Circle, Class, and S Awards

LOIS MARIE GARIBALDI—Academic

JANET GARVINE—Academic; Attended Tamalpais High 1 Quarter '29

THELMA GILBERT—Academic; 6 Semesters Honor Scholarship; Pres. Girls' League '32-'33; Treas. Tri-Y '33; Latin Prize '30; Student Control '32-'33

DONNA DEAN GILL—Academic; Attended Linden Union High '29

NORVAL L. GILL—Academic; 4 Semesters Honor Scholarship; Pres. Honor Scholarship '32; Vice-Pres. Quill and Scroll '32, '33; Art Editor Weekly '32-'33; Art Editor Memory Book; 1st Prize Water Color, Haggin Memorial Contest '32

VAUDIS GILLESPIE—Academic

ROBERT GILLIES—Academic; Attended Beaver High, Utah, '29

JEWELL GILMORE—Commercial; 1 Semester Honor Scholarship; Student Control '33

CHARLES HARMON GINN—Academic; Troubadours '32; Attended Escalon High 2 Years

MARY GIORDANO—Commercial; Class Numerals

RAY GOLDSMITH—Academic; Sgt.-at-Arms Ex-Service Club '33; Circle and Block S Football

CATHERINE A. GORHAM—Academic; Attended Escalon High '29, '30

COLLEEN RUBY GOUGH — Academic; Custodian German Club '33; Principal in "Spinster Aunt," "Troubadour King", and "Hansel and Gretel"

JANET GRAY—Academic; 1 Semester Honor Scholarship; Orchestra '31-'33

MAXINE HAAS—Academic; Editor Senior Memory Book; Sec. Quill and Scroll; Class Numerals; News Editor, Reporter; String Quartette and Quintette, Orchestra '31-'33; Attended Santa Clara High '29

HARVEY HABEEB—Academic

MARTHA HACHMAN—Academic; Gold Seal, 7 Semesters Honor Scholarship; Vice-Pres. Girls' League '33

BARBARA HACKETT—Academic

ROBERT HALL—Academic

MAXINE HAMM—Academic

JEANNE E. HAMMEL—Academic; Sec. Camera Club '32; Class and Circle Numerals and Circle S

ATTELRA WINIFRED HANFORD — Academic; Vice-Pres. Philophysean '31; G. and T. Exchange Editor '32, Associate Editor '33; Editor "Buds O' Blue" '32

WILLIAM R. HANSON—Vocational

MARY CATHERINE HARLAN—Commercial; 1 Semester Honor Scholarship; Sec.-Treas. Tri-Y Fall '32; Old English S





BILL HARP—Academic; Band '29-'33; Attended Los Banos 1 Semester '31

DOROTHY HARRINGTON—Academic

WILMA HARRIS—Academic; Attended Tecumseh High, Nebraska, 1 Year

MILDRED HARRISON — Academic; Troubadours Fall '31-June '33

RICHARD HAWLEY—Academic; Sec. Hi-Y '32, Vice-Pres. '33

LUCILE HEFFREN—Academic; 1 Semester Honor Scholarship; Vice-Pres. Latin Club '32; Circle and Class Numerals and Circle S

ALICE PAULA HEGWER—Academic; Class Numeral; Orchestra '31-'33; Attended Escalon High '30, '31

MONA BELLE HENCH — Academic; 4 Semesters Honor Scholarship Tracy High; Attended Tracy High '29, '30; Student Control '29-'30 in Tracy High

JAMES HENRY—Academic

GERTRUDE E. HERBERT—Academic

MARY HICKLIN—Academic

GERALDINE HICKMAN—Commercial; Old English S; Attended Oakdale High '29; Student Control '33

LILLIAN M. HINTON — Commercial; 4 Semesters Honor Scholarship; Sec. Girls' League '32; Class Numeral; Member Merit Board '33; Ex. Committee Girls' League '29, '30

LOUIS HUBBARD — Academic; Block S in Track; Band 2 Years

BILL HUGHES—Academic

MARGARET HUNTINGTON — Academic; 6 Semesters Honor Scholarship; Prize in Latin '29, '30

JESSIE TOMIKO ITO—Commercial; 1 Semester Honor Scholarship

LLOYD JAMES—Academic; Pres. Liberatus '32, '33

ALICE MAY JOHNSON—Academic

LOIS JOHNSON—Academic; Vice-Pres. Girls' Tennis Club '32; Sec. Playcrafters '33; Librarian "The Sky Train" '32

FLORENCE JOHNSTON—Academic; Sec. Tennis Club '31

SHIRLEY JONES—Academic; Gold Seal, 7 Semesters Honor Scholarship; Sec. '33 Class; Pres. Spanish Club '32; Student Control '30, '32

ROBERT JOYCE—Commercial; Block S In Baseball

SADIE KASHMAN — Commercial; Vice Pres. Commercial English Society '31

EVA KATBERG—Academic

GLENN KEFFER—Academic

ALBERT KELLY—Academic

DOROTHY KENNEDY—Academic

GEORGE KENYON—Academic

RAY KETTLE—Commercial

H. MAE KIEHN—Academic; Program Chairman Liberatus Club '32; Sec. Liberatus Club '32; Cast "Stray Cats"

CHESTER KIRK—Academic

GODFREY KNAPP—Academic

ANNIE KUNII — Commercial; 2 Semesters Honor Scholarship

EVA LAGORIO—Commercial; Class Numeral

CAROLYN LANG—Commercial; Class Numeral

EDWA LANGDON—Academic; Miss Ransom's School 3 Yrs.

HELEN LANGDON—Academic

ALVIN LEARNED—Academic; Pianist Troubadours '32; Band 1 Quarter; Orchestra 2½ Years

CLARA LEISERING—Commercial; Class Numeral

EUNICE MARIE LEONARDINI—Academic; Class Numeral; Italian Night '32, '33, Medal in Italian

INEZ LESSIG—Commercial; Attended Madera High '30

ELBERT E. LEWIS—Academic; Attended Selma High '31; Sanger High '32

JAMES LEWIS—Vocational; 4 Semesters Honor Scholarship; Pres. Auto Club '33; Troubadours '30-'33





SENIOR MEMORIES



MARIE V. LILLYBRIDGE—Commercial; Class Numeral, Circle S

STANLEY LIMBAUGH—Academic

MARIAN LINABARY—Academic

EMERY LINDBERG — Academic; 3 Semesters Honor Scholarship

BETH LITTLE—Academic; Troubadours '31-'33

ISABEL LOW—Academic; 5 Semesters Honor Scholarship; Vice Pres. Chinese Club '32; Circle and Class Numeral, Circle S; Student Control '33

JOHN LOWRY—Academic; 3 Semesters Honor Scholarship; Vice-Pres. Camera Club '32; Pres. Torch Club '29; Vice-Pres. Science Club '32; Latin Prize '30

STELLA LUJAN—Commercial; Class Numeral, Circle S

GLADYS I. LUNDHOLM—Academic

TORREY LYONS — Academic; First Custodian '30; Pres. Camera Club '33; Block S Swimming '32

THELMA LYSTER — Academic; Class Numerals and Old English S

WILLIAM H. MCBRIDE—Academic; Joke Editor G. and T. '32

ROSE MCCAFFREY—Academic; Attended Escalon High '28-'31

CLAIRE MCCALL—Academic

PAUL MCCARTHY—Academic; Senior Public Address Announcer Alhambra High '32; Varsity Basketball and Track Alhambra High '32; Cast of "Sky Train" '32, "Stray Cats" '33; Attended Sacramento High '30; Alhambra High '31-'32

IRENE MCCLORY—Academic

LOUELLA MCCOMBS—Academic; Old English S

JANE MCCURRY—Academic

MAMIE MCGLOTHEN—Academic; 4 Semesters Honor Scholarship; Cast of Senior Play, "Stray Cats"

RAYMOND MCGURK JR.—Academic; Attended St. Mary's '29; Student Control '33

ROBT. MCKILLICAN—Academic

JERRY MACKEY—Academic

SENIOR MEMORIES

NELLIE MAGNUSON—Academic  
 HELEN MALLOY—Academic; Circle and Class Numerals;  
 Latin Prize '30  
 CATHERINE BELLE MARSTON—Academic; Circle and Class  
 Numerals

EDWARD MARTIN—Academic; Block S Football; Cast of  
 "The Goose Hangs High"  
 EUGENE MARTIN—Academic  
 DICK S. MATSUI—Academic

MARION GERTRUDE MATTHEWS—Academic; Sec. Tri-Y '33;  
 Circle Numeral  
 MARION MAYNARD—Academic; Troubadours '32-'33  
 DOROTHY MEANEY—Academic

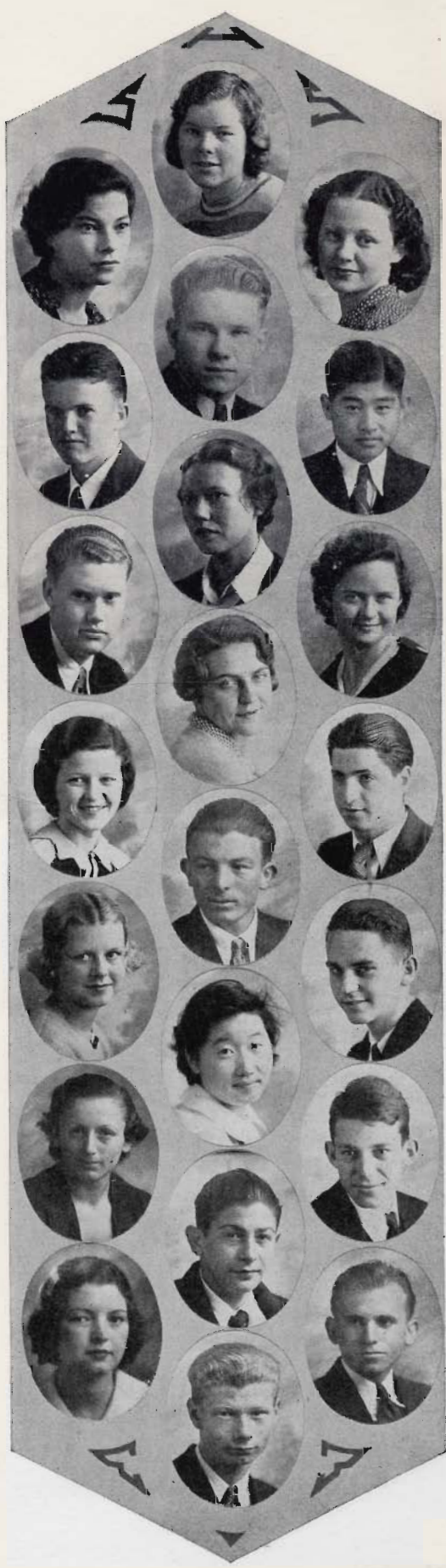
MARY MENTABERRY—Commercial; Old English S; Sec. G.  
 A. A. Ex.-Committee '32-'33; Student Control '32  
 ELIZABETH MEWBORN—Commercial  
 CHARLES MILLER—Academic

CORWIN MILLER—Academic  
 BARBARA MINTURN—Academic; Old English S; G. A. A.  
 Ex. Committee '33  
 FRED MITCHELL—Academic

MAY K. MITSUDA—Commercial; Circle Numeral  
 ROSE MODDO—Commercial  
 GEORGE MORAN—Academic; Track Block '32; Orchestra 1  
 Semester; Lodi High '29, '30, '31

JOHN MORETTI—Academic  
 INEZ MORGAN—Academic  
 MERLIN MORGAN—Academic

C. WESLEY MORRIS—Vocational





MILDRED MOSMAN—Commercial

FLORENCE MULLINS—Academic; Attended Tracy High '30

FRANK L. NASH—Academic; Attended San Jose High until Dec. '31; Student Control '33

PAUL NASSANO—Academic

LOUISE NELSON—Commercial

JESSE NEWELL—Academic; Vice-Pres. Freshman Class at Calaveras High; Attended Calaveras High '29 and '30

DORIS NEWTON—Commercial; Class Numerals

AMEDEO J. NICORA—Commercial; 6 Semesters Honor Scholarship; Pres. Italian Club '32-'33; Cast of "Cent' Anni" and "Tristi Amori," Gold Medal in Italian

FRANK S. NISHIOKA—Academic

MASAKO NITTA—Commercial

JULIUS OLHASSO—Academic; Block S, Circle S

AUDREY O'NEIL—Academic; Small and Large Old English S; Troubadours Sept. '31

NINA O'NEIL—Academic; First Vice-Pres. Student Body '33; Troubadours Feb. '31-June '33; Cast of "They'll Do It Every Time"; Honorable Mention Shakespearian Contest '31; Head Student Control '33

ALLEN F. OTT—Vocational

JOHN PANIZZA—Vocational; 2 Semesters Honor Scholarship; Captain Football Team '32; 3 Letters Football, 2 Track; Student Control Sept. '32-June '33

VALERIO PANIZZA—Vocational; Letters Football

KARL PARKER—Academic; Circle S

MELVIN L. PARKER—Vocational

BECK PARSONS—Academic; Pres. Stockton Jr. Tennis Club '32; 4 letters Basketball; 3 Letters Tennis; Class A Winner Menzies Award '33; Troubadours '31-'33; Band '31; Finalist Shakespearian Contest '31-'32

GERALDINE PATTON—Academic; Gold Seal, 7 Semesters Honor Scholarship; First Vice-Pres. Fall, President Student Body '33; Sec. Honor Scholarship '32; Pres. Social Service '33; Vice-Pres. Northern Region Calif. Scholarship Federation; Student Control Fall '32

MARADEAN PEASE—Academic

EDA PELLEGRINI—Commercial; Class Numerals and Old English S

NORMAN J. PENBERTHY—Academic

CLEM WILLIAM PHULPS — Academic; Attended Balboa High S. F. '28; Folsom Union High '29-'32

J. N. PONDER—Academic; 2 Circle S in Football; Sport Editor Weekly '32

ELSIE POWELL — Academic; Attended Davenport High, Iowa, 2½ years

DELOY PRICE—Commercial; Band '31-'32; Attended Continuation High '30-'31

ALLEGRIINA PUCCINELLI—Commercial; Class Numerals and Circle S

FRANK RABALLO—Commercial

GENEVEVE RATTO—Academic

JEANEVA READ—Academic; 3 Semesters Honor Scholarship; Vice-Pres. Social Service '33; Attended Dominican Convent '29, St. Agnes '30

DOROTHY REELHORN—Academic; Gold Seal, 5 Semesters Honor Scholarship; Circle Numeral; 2nd Band '30; 2nd Orchestra Feb. '30-Feb. '32; 1st Orchestra '32-'33

THOMAS REILLEY—Academic; Sec.-Treas. Guardsmen '33; Track Mgr. '30-'33; Block S; Troubadours '33; Orchestra '30

KENNETH REYNOLDS—Academic

JACK RIBLE—Academic; Member Merit Board '33; Pres. Science Club '32-'33; Assistant Electrician "Sky Train"; Attended Galileo High Spring '30; Lincoln High, Portland, Oregon, Fall '31

LOUELLA RITTER—Academic; 3 Semesters Honor Scholarship; Attended Manteca High '29; Santa Cruz High '30 1 Semester

JOAN ROBINSON—Academic; Troubadours '30-'32; Cast of "The Sky Train"

KENNETH ROLAND ROOT—Academic

JEAN ROSENBERGER—Academic; 3 Semesters Honor Scholarship

ETTARE ROSSELLI—Vocational

JANET ROTHENBUSH—Academic

CARLO ROVETTA—Academic; Pres. Torch Club '29; Vice-Pres. Hi-Y '32; Pres. Hi-Y '33; Attended University High '30

NORVIN P. RUESS—Academic; Freshman Football Manager '28

IDA MARIE SAINAGHI—Academic; Circle and Numeral





WILLIAM L. SANTOR—Academic; 1 Semester Honor Scholarship; Pres. Latin Club '32; Head Electrician "Sky Train"; Latin Prize '30; Student Control '33

FLORENCE SATO—Academic

ALMA SATTUI—Commercial; Class Numerals

TULLIA SATTUI—Commercial

BILL SCANLAN—Academic; Pres. Agricultural Club '32-'33

IRVING SCHWARTZ — Academic; Rally Committee '32; Sergeant-at-Arms of Circle S; 2 Circle Letters Basketball; Orchestra '29-'31

EVALYN SELINER—Commercial; Senior Council; Pres. Old English S; Old English S and Class Numerals

LAURA SENIOR—Academic; 2 Semesters Honor Scholarship; Vice-Pres. Girls' League '32; Old English S; Student Control '31

JOHN SHELDON—Academic; Pres. Torch Club '30; Pres. Spanish Club '32; Pres. H.-Y Club; Pres. H.-Y Older Boys' Conference '32; 2nd Prize Prose Contest '32

TOMIKO SHIROMIZU—Comemrcial; Old English S and Class Numerals

LAWRENCE M. SHORT—Academic; Orchestra Concertmaster 4 Years; 4 Year Silver Orchestra Bar

CELIA M. SILER—Academic

DOUGLAS SILVA — Vocational; 2 Semesters Honor Scholarship; Letter in Football; Linotype Operator Weekly

MORRIS SILVERMAN—Academic; 1 Semester Honor Scholarship; Comm. of Organiz. '32; Senior Class Pres. '33; Pres. Stamp Club '30, '31, '33; Stage Mgr. Playcrafters '31, '33; Pres. German Club '32; Stage Mgr. "They'll Do It Every Time", "Skidding", "Sky Train", "The Goose Hangs High", and Cast of Senior Play "Stray Cats"

MARY JO SILVY—Academic; Cast of "Charm School" in Mission High; Attended Mission High '30-'31; Richmond High '31

MARGARET IONE SKED—Academic

BERNARDINE SMITH—Commercial

EMMA SMITH—Commercial; Class Numerals

JEANNE SMITH—Academic; First Prize Essay Division Prose and Poetry Contest, Best Prose '33

STEPHEN LOUIS SOLARI — Commercial; Sergeant-at-Arms Italian Club '32

LUCILLE SOUTHWELL—Academic; Vice-Pres. Tri-Y Club '32; Pres. Tri-Y Club '33

VIRGINIA MARY STEINER—Academic

SPURGEON STOVER—Academic; Circle in Football  
 FLORENCE STRECKER—Academic  
 VIOLET C. SWANSON—Academic

BENJAMIN SYKES—Vocational  
 STELLA TABACCO—Commercial; 2 Semesters Honor Scholarship; Class Numerals; Student Control '32  
 JAMES THANOS—Academic; Circle in Track

EDNA THOMPSON—Academic  
 HERSCHEL THOMPSON—Academic; Editor of Weekly '33; Attended Alexander Jr. High, Fresno, '30; Student Control '33  
 IDA THOMPSON—Commercial; Class Numerals

BERNICE TINKESS—Academic; Old English S  
 MARY TOMURA—Commercial; Class Numerals  
 EDWIN TORREANO—Academic; Block Letter in Baseball; Band 2 years; Orchestra 1 year

JESSIE L. TRANTHAM—Academic  
 ALFRED TRAVERSO — Vocational; Linotype Operator of Weekly  
 ALICE ELIZABETH TRIVELPIECE—Academic; Property Manager Playcrafters '33; Block and Circle Numerals

RONALD TROTTER—Commercial  
 SHIZUKO TSUSHIMA—Commercial; Class Numerals  
 ALBERTA TURNER—Academic

HUGH TYE—Academic; Rally Committee '33  
 THELMA MARTHA ULDALL—Commercial; Class Numerals  
 CATHERINE ULMER—Commercial

PAUL L. VICKROY—Academic





RICHARD FLOYD WADE—Commercial; Attended Pittsburg High '29

MARJORIE FLORENCE WEBSTER—Academic; Attended Principia, St. Louis, '32

CLAIRE CONSUELA WEHRSTED—Academic; 1 Semester Honor Scholarship

JACK WEIERSHAUSER — Academic; Band '31; Block S in Track

JANE WESCOAT—Academic; Gold Seal, 7 Semesters Honor Scholarship; Sec. Social Service Club '32

GERALDINE M. WHITE—Academic; Orchestra 3½ Years

ROSS WHITE—Academic

ROBERT E. WILKINSON—Vocational; Pres. Woodcrafters '32

EARL WILLIS—Vocational

WILMA WITTEMAN—Academic

HAZEL WONG—Commercial; 1 Semester Honor Scholarship; Class Numerals

JOHNNIE WONG—Academic; Vice-Pres. Chinese Club '32; Track 2 Years

RAY WONG—Academic; Pres. Chinese Club '32, '33; Sergeant-at-Arms Hi-Y '33; Menzies Trophy '32

SUI CHING WOO—Academic; Band '28; Attended Sacred Heart High, Canton, China, '25-'28

ROBERT WOOD—Academic; 1 Semester Honor Scholarship Attended Salem High 2 Years

IRENE WRIGHT—Commercial; Class Numerals

VALERIA WYMAN—Commercial

MARY YOHNER—Academic

BELLA ZEFF—Commercial; Class Numerals

GROVER BETHARDS—Academic; Sport Editor Weekly; Editor Cub Edition; Third Prize "Buds O' Blue" '33; Sport Editor Memory Book

PAULINE BOOKER—Commercial; Gold Seal; 7 Semesters Honor Scholarship; Class and Circle Numerals; Student Control '30, '31

HARRIET BRANDT—Academic; Attended Hollywood High 1 Semester

ALDEN BROCHIER—Academic; Pres. Hobby Club '32; Pres. French Club '32, '33; Pres. Stamp Club '32; Treas. Boys' Science Club '32; Editor "Cub" Issue '33

CAROLYN BROCK—Academic; Gold Seal; 8 Semesters Honor Scholarship; Gold Medal in Italian '32

THELMA BROWN—Academic; Orchestra '29, '30, '31, '32, '33; Girls' String Quartet '32, '33

GERALDINE M. BUCKLEY—Commercial; Class Numerals; Circle S

HAZEL BYERS—Commercial; Attended Alliance High, Ohio, '30

KENNETH BYERS—Academic; 4 Semesters Honor Scholarship; Cast "The Goose Hangs High", "Sky Train"; Attended Manual Arts High, Los Angeles, 3 Semesters

MARY J. CHESI—Commercial; Gold Seal; 7 Semesters Honor Scholarship; Student Control '32; Old English S, Class and Circle Numerals

DOROTHY G. CHRISTMAN—Academic; Class Numerals

HENRIETTA CHRISTMAN—Commercial; Class Numerals

BERNERD CHRISTOPHERSON—Academic

DOROTHY ANN CHURCH—Academic

HELEN CODY—Academic; 1 Semester Honor Scholarship; Circle S in Baseball.

ELMYRAN R. COOPER — Academic; 2 Semesters Honor Scholarship; Block S Track; Circle S Basketball; Band 4 Years; Orchestra '32

LOIS CUNDELL—Academic

GLADYS DALE—Commercial

LUCY DALE—Commercial

JEANNE DAVIDSON—Commercial; Class and Circle Numerals

DAVID DU FRENE—Academic

ALLEN C. ELDRED—Academic

JACK F. FARNESI—Academic; Sec. Student Control '32; Medal in Italian; Consulate for Scholarship in Italian; Cast "Cent' Anni"

PHYLLIS MARCIELLE FORTE—Commercial; Class Numerals





SENIOR MEMORIES



CLARA H. FUJISHIGE—Academic  
 FUMIKO FUKUYAMA—Commercial  
 SALVADOR GAROFALO—Commercial

DOROTHY MAE GELLING—Academic; Attended Santa Clara High '30, '31  
 EARLINE GOODAIL—Commercial; Attended Oakdale High '29, '30, Santa Fe High, New Mex. '30  
 HARVEY M. HAKEEM—Commercial

CHESTER GEORGE HALL—Vocational; 1 Semester Honor Scholarship  
 HAROLD L. HANES—Academic  
 RIVARD HEIL—Academic; Class Day Committee

WALTER HUBER—Academic; Student Body Pres. '32; Yell Leader '31; Troubadours '30, '31, '32; Student Control '32; Attended Hayward High '29.  
 JONIS K. JACOBSON—Academic  
 STELLA JOHNSON—Academic

ELSIE JOHNSTON—Academic; Gold Seal; 6 Semesters Honor Scholarship; Latin Prizes '30, '31, '32  
 LENORA JUDKINS—Academic  
 PEARL JURICH—Commercial; Orchestra '29, '30, '31; Circle and Block Numerals

KATHLYN KATBERG—Commercial; Circle and Block Numerals  
 JACOB V. KIM—Academic; Attended Sacramento High  
 ELMER E. KITTERMAN—Commercial; Senior Council; Sec. Block "S" '31; Swimming Manager '31, '32; Publicity Manager Football '32

MAY LEONA KNOWLAND—Academic; Attended Compton High '31, '32  
 HARRIET M. KRUPKE—Academic  
 HARRIET ANN LABERGE—Academic

FRANCIS LAMB—Academic; 1 Semester Honor Scholarship

ALOYSIA LAMBOURN—Academic

ROBERT L. LE CLERT—Commercial; Orchestra 4 Years; 3 Yr. Award in Orchestra

DORCAS LONSDALE—Academic

JACK MCFARLAND — Academic; Editor Weekly Fall '32; Associate Editor '32; 3 Semesters Honor Scholarship; Sec. Latin Club '30; Student Control '32; Band '30, '31; Member Quill and Scroll '32

RAYMONDE MANUEL — Academic; 3 Semesters Honor Scholarship

BOB MOORE—Commercial; Senior Ring and Garb Committees; Assistant Business Mgr. Annual '32; Advertising Mgr. "Goose Hangs High"

BILL MORRIS — Academic; Cast "Sky Train"; Attended Thomas Star King High, Los Angeles, '29

CATHERINE G. MULLEN—Academic; Pres. Madrigals '32; Sec. Madrigals '31; Orchestra 4 Years; Girls' String Quartette '31, '32, '33

FRED K. NAKAMURA — Academic; 2 Semesters Honor Scholarship

OSCAR NATALI—Academic; Cast "Cent' Anni"

DOUGLAS NELSON—Academic; Class President; Pres. Playcrafters '32; Member Quill and Scroll; Weekly Staff '32; Winner Regional Shakespearian Contest '32; Cast "Sky Train", "Skidding," "Help Yourself", "The Goose Hangs High", "They'll Do It Every Time"; Orchestra '30, '31, '32; Rally Committee '32

EDWARD NIELSON—Academic; Band '29, '30, '31

DOROTHY BUDE ONG—Commercial; Attended Pittsburg High 3½ Years; 7 Semesters Pittsburg Scholarship Society; S & A Commissioner Publicity '31, Vice-Pres. '32; Galleon Staff; Orchestra '32; Block P; Typing Medals

FRANK PITTO—Commercial; Cast "Cent' Anni"

LOUIS PITTO—Commercial

GALEN POTTER—Academic; Block S Track '32; 2nd in Sectional Meet; Art Editor Annual '32; Art Director "Sky Train"; 1st Award in National Scholastic Contest '31; Placed Haggin Memorial Art Contest '31, '32; National School Art '32; Winner Summer Scholarship Calif. School Arts and Crafts; Winner Scholastic Cover Contest May '32

HARRIET PULICH—Academic; Troubadours '31, '32

ERNEST REED—Academic; Rally Committee '32; Yell Leader '32; Circle S in Track '30; Band 4 Years

ELVIRA REMUSAT—Academic; G. A. A. Ex. Committee '30, '31; Girls' Basketball Mgr. '30; Baseball Mgr. '31

EVELYN CLEO RICHMOND—Academic

JACK ROHRER—Academic; Block S Football

DONALD ROOT—Academic





JEAN ROSSI—Academic; Pres. G. A. A. Ex. Committee '32; Pres. Girls' Tennis Club '31; Tennis Mgr. '31; Sec. Playcrafters '32; Menzies Trophy for Girls' Doubles '32; Large Old English S '30; Cast "Seventeen", "The Goose Hangs High", "Sky Train"

ROSE MARY SANTINI—Academic; 1 Semester Honor Scholarship; Gold Medal in Italian; Cast "Cent' Anni"

ALBERT SOUTHWICK—Vocational

JEANETTE STAMER—Academic; Vice-Pres. Playcrafters '32; Participant in Regional Shakespearian Contest '32; Cast "The Goose Hangs High", "Sky Train"

LONNIE STEBBINS—Academic

GOTTFRIED STEINER—Academic; Orchestra '28, '29

LUCILLE STEWART—Academic

LA VERNE STITT—Academic; Senior Prom. and Class Day Committees; Circle Numerals

CONSTANCE STORMES—Academic; Treas. Pan Pacific Club '30; Vice Pres. Liberatus Club '32; Historian Playcrafters '31; Numerals and Old English S; Vice Pres. G. A. A. Ex. Com.; Cast "They'll Do It Every Time", "Jade God"; Property Mistress, "Skidding"

JEANNE STOWELL—Academic; 1 Semester Honor Scholarship; Circle S; Class Day Speaker

GRACE F. SUZUKI—Academic; Kinjo Girls' High School, Japan, '29-'32

ELSIE TASSANO—Commercial; Old English S

BOB THOMAS—Academic

ROBERT TOWLE—Academic; 3 Years Orchestra

DOROTHY TUCKER—Academic; Student Control '32

EDWARD T. UESUGI—Academic and Commercial

DOROTHY WALKER—Academic; Vice Pres. of Class; Pres. Quill and Scroll '32; Girls' League Cabinet '32; News Editor Weekly '32; Student Control '32

BOB WELLS—Academic

LAUREN WEST—Academic; Orchestra '30, '31, '32; Places in S. H. S. Musical Contest; Boys' String Quartet

DOROTHEA WOOD—Academic; Sec.-Treas. Girls' League '30; Sec. Junior Red Cross '32

JIMMIE WOOTTEN — Academic; Business Manager Playcrafters '32; Cast "The Goose Hangs High", and "Sky Train"; Sec.-Treas. Class

CATHERINE LEE BARKETT—Commercial; 3 Semesters Honor Scholarship; Circle S

# MEMORY

*Merlanne Gardner*

Youth builds her castles in the air  
And plans each one with tender care;  
Ambitious, hopeful, Youth aspires;  
The farthest stars are Youth's desires.

Age rests in tranquil solitude;  
Peace constitutes her every mood.  
Ambition does not stir her heart;  
In earthly fame she wants no part.

What Youth is doing, Age has done;  
She built her castles in the sun;  
The joys of Youth are constantly  
Relived for Age in Memory.

## Graduates Without Pictures

### February Graduates

JOHN AVILA—Vocational  
FRED BARTLETT—Academic  
JEANNE BESSAC—Academic  
BOB BRIGGS—Academic  
ERNEST CARPINO—Vocational  
MIKE CASHARA—Commercial  
EMIL E. CESMAT—Academic  
JOHN CLAUSSEN—Vocational  
WILLIAM COOPER—Vocational  
NEWTON CUNNINGHAM—Academic  
JACK CURNOW—Academic  
BILL DAOUST—Academic  
JOHN G. DE SOTO—Commercial; Pres. Pan. Pacific Club '30; Publicity Manager Football '31; Band '29, '30  
MICHAEL MARQUEZ ESTRADA—Academic; First Prize Charcoal Division Haggin Memorial Art Contest '32; Orchestra '30, '31, '32  
AUGUST C. FIRPO—Vocational; Pres. Advanced Auto Class '32  
SILVO L. GIACCHERO—Commercial  
RAYMOND GIANELLI—Commercial  
MARY VIRGINIA GIORZA—Commercial; Class Numerals  
BEN LASKEY—Vocational  
HARRY LEE—Vocational  
BILL LYNCH—Academic; Block "S" in track '30, '31  
HENRY MASTIN—Commercial  
THOMAS H. MEWBORN—Academic; 3 Semesters Honor Scholarship; Menzies Award—Class "C", First Place Spring '32, Class "B" Tie for First Place Fall '32  
ALBERT NEUHAUS—Vocational  
LEE PERSON—Commercial  
JOHN PREDAGNE—Academic; 2 Block S's in Football; Student Control 1 1/2 yrs  
ALLAN REED—Academic  
ALYS SIMMONS—Academic  
CLAUDE STATUM—Vocational  
FRED H. STEVENS—Vocational  
LESTER TUCK—Academic

### June Graduates

DOUGLAS E. ATWOOD—Academic  
GLENN BERTELSON—Commercial; Circle S in Football  
JOE M. BOITANO—Vocational  
BRUCE BLACK—Academic, Commercial; Attended Phoenix Union High School, Arizona 3 1/2 Years  
JACK BEAN—Commercial; Block S Basketball; Student Control '31, '32.  
JACK C. CAMPBELL—Academic  
EDWIN J. CAMPION—Academic; Attended St. Mary's High 3 1/2 Years

JOHN CECHINI—Academic; 1 Semester Honor Scholarship; Block "S" '31, '32. Football; Sweater in Football '32; Silver Medal in Italian '32; Student Control '32  
DANIEL CORKINS—Academic  
EUGENE CRAMER—Academic; Cartoonist and Reporter on Weekly '32; Band 4 Years  
FRANK CARPINO—Vocational  
PHILIP DAVIES—Academic  
DOROTHY DEERING—Academic; Student Control '32  
DOROTHY DENTON—Academic  
BERNYCE DERVIN—Academic  
JOHN DOMENCH—Academic; Block S Football  
JACK DONALDSON—Academic  
WALTER L. DOYLE JR.—Academic; Attended Polytechnic High, San Francisco, 3 Years  
HAROLD ELLIOTT—Academic; Vice-Pres. Stamp Club '29; Business Manager Weekly '32  
ALVIN FOSTINE—Academic  
ROY GODFREY—Academic; Block S; Troubadours 2 Years  
DARIUS A. GUERNSEY—Academic; Menzies Trophy; Attended Hollywood High '31  
BERNARD GIANELLI—Academic; Band 3 Semesters  
CLIFFORD HANSEN—Academic  
HAROLD HIROSE—Academic  
EDWARD HUNTINGTON—Academic  
T. W. JACK MCINTOSH—Academic; Asst. Bus. Mgr. and Bus. Mgr. Weekly '32; Student Council '32; Joke Editor '32  
BILL LONG—Academic  
ELVES L. MARENGO—Academic  
DAVID OLIVER—Academic  
CHARLES PERKINS—Vocational; Intertype Operator G. & T. Band '31-'32; Honor Scholarship Certificate  
MARIO PRESTO—Commercial; 2 Letters Football, 1 Letter Baseball, 2nd place Menzies Trophy; Student Control '31-'32  
ERNEST PELLATON—Vocational  
DAN PELLEGGRI—Vocational  
ANGELO PELUSO—Vocational  
VINCENT REPETTI—Academic; 3 Circles Football  
RICHARD SAXTON—Academic  
WILLIE SCHENONE—Commercial  
EMIL SCHENONE—Vocational  
ALBERT SMALL—Vocational  
PERCY SUTTON—Vocational  
BOB TURNER—Academic; Attended Modesto High, Tamalpais High  
JACK TURNER—Academic; Attended Modesto High, Tamalpais High; Student Control '33  
RONALD WALTERS—Academic; 1 Year Orchestra  
CHESTER WOODHILL—Academic; Pres. Ex-Service Club  
TOURU YAMASHIRO—Academic