

19

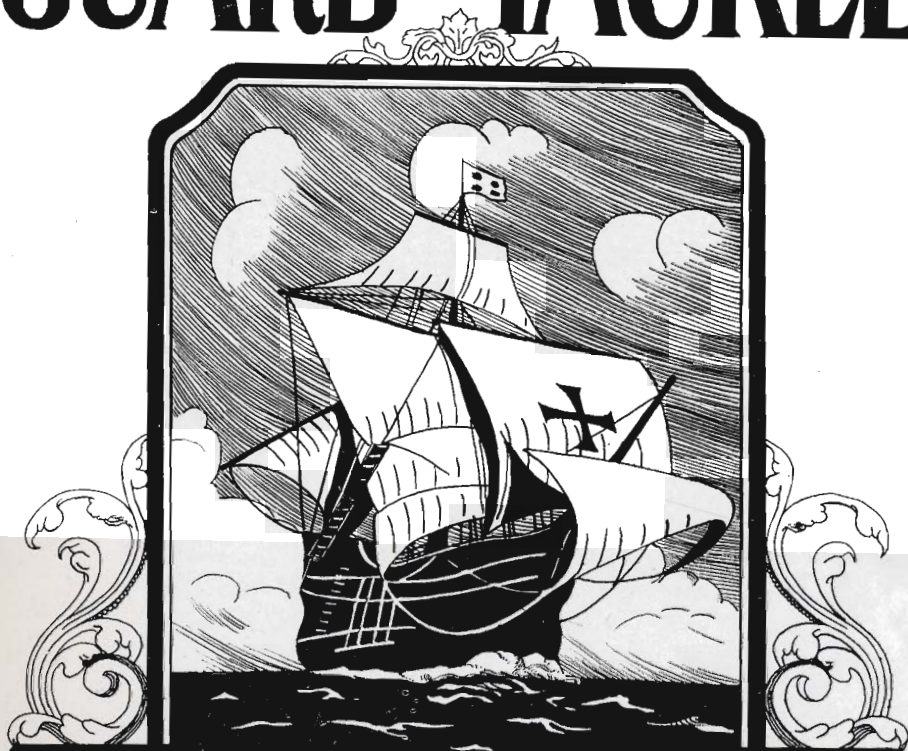
25



ANNUAL

GUARD AND TACKLE

ANNUAL GUARD AND TACKLE



PUBLISHED
BY THE
ASSOCIATED STUDENTS
OF THE
STOCKTON HIGH SCHOOL
1925

Hubert Miller



EX LIBRIS



Dedication

To Miss Ann Frances Williams, Be-
loved and Esteemed by All Who
Know her as Dramatic Coach,
Teacher, or Friend, Is This
Book Lovingly Dedicated.

Noel H. Garrison



Principal's Message

CHOOSE your associates and your friends with care. You are a part of all you meet. Make that environment constructively helpful. It costs much to be a friend or to have a friend. You will not and can not have many. Fortunate will you be to have a few who are **absolutely** faithful. From this inner circle choose the wisest for your counselors. **Seek** proper advice on all important matters, and heed it.

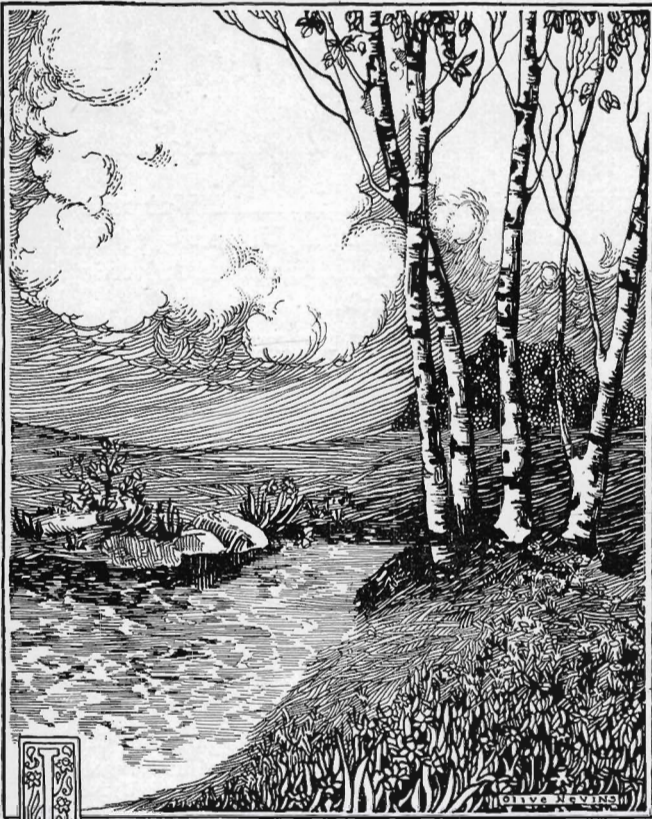
Choose your work or vocation wisely. Select work which you can do and do well, and which you will enjoy. If you do not find happiness in your work, you will not find it anywhere, although you must realize there are unpleasant things to be met in every line of endeavor. Take time now to prepare for the job which awaits you. **Keep** up with your calling. Every day brings new developments. Anticipate tomorrow's needs if you can, and your success will be assured.

Choose your time for play as well as for work and study. We Americans do not **play** enough. **E**veryone should have a vocation, an avocation, and a vacation. **L**et all three be wholesome. Leisure hours need not be idle or destructive. Make them helpful.

Enjoy your youth while you may. Girlhood and boyhood come but once. Do not be in a hurry to establish a home. Many marry too young. Home is the best and happiest place in the world, but the business of home-making and home-keeping is nevertheless a serious one. Make your decisions carefully.

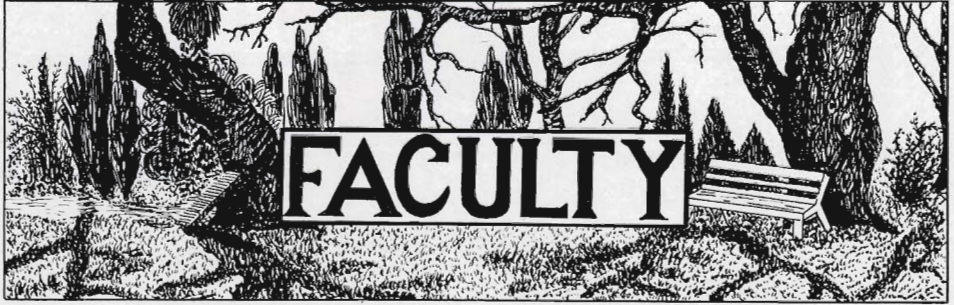
Wise counsel and careful choosing as to your friends, your vocation, your avocation, your study, and your home will contribute much to your happiness and your success. May both be yours in abundance!

—NOEL H. GARRISON.



Iwandered lonely as a cloud,
That floats along o'er vale and hill,
When all at once I saw a crowd,
A host of golden daffodils;
Beside the lake, beneath the trees,
Fluttering and dancing in the breeze.

Dordworth.



NOEL H. GARRISON, *Principal* University of California, A. B.
 EDWIN J. BERRINGER, *Vice Principal* University of California, B. L., M. L.
 MISS ALICE MCINNES University of California, B. L.
Vice Principal and Dean of Girls.

ENGLISH DEPARTMENT

MISS MINERVA U. HOWELL Stanford University.	MISS OVENA LARSON University of Utah, B. A. University of California.
MISS ESTHER BUTTERS Mills College, B. A.	MISS HELEN MANSKE University of California, A. B.
MISS ANNE L. HARRIS Occidental College, B. L. University of California, B. L.	MRS. RUTH MONAHAN University of California, A. B.
A. P. HARRIS Stanford University, A. B. Harvard, P. G.	MISS LUCY E. OSBORN Stanford University, A. B. University of California, M. L.
MISS ELIZABETH HUMBÄRGER University of Kansas, A. B.	MISS ANN FRANCES WILLIAMS University of Wisconsin, B. A. University of California.
MISS ADELLE HOWELL University of California, B. L.	MISS CARRIE D. WRIGHT Smith College, A. B. Stanford University, A. M.

LANGUAGE DEPARTMENT

MISS LILLIAN WILLIAMS University of California, A. B.	MISS GLADYS G. LUKES University of California, A. B.
MISS ANNE MARIE BACH University of California, A. B.	HILMAR H. WEBER Harvard University, A. B., A. M. University of California, M. L.
TRUMAN DONOHO Stanford University, A. B., M. A.	CHARLES D. WHYTE College of Mexico City, A. B.
MISS KATHERINE M. DOUGLAS University of California, B. L.	

HISTORY DEPARTMENT

WESLEY G. YOUNG University of Washington, A. B., A. M.	MISS LAURA M. KINGSBURY University of Missouri, B. S., A. B.
EDWIN J. BERRINGER University of California, B. L., M. L.	MISS ELOISE LANGMADE Smith College, A. B. Stanford University, A. M.
MISS LELA GILLAN Stanford University, A. M.	HILMAN H. WEBER Harvard University, A. B., A. M.

MATHEMATICS DEPARTMENT

JOHN S. REED

Bates College, A. B.
Sanerian College of Penmanship

H. A. BRADLEY

Washington State College, B. S.

MISS ELIZABETH HUMBARGER

University of Kansas, A. B. and
Graduate Work.

MISS ANNA LAWREY

University of Colorado, A. B., A. M.
Teachers' College, Columbia, A. M.

J. C. CORBETT

University of California, B. S.

ASA L. CAULKINS

University of California, A. B., A. M.

MISS EMMA HAWKINS

University of California, B. S.

ARTHUR LIVINGSTON

Stanford University, A. B., A. M.

MISS LUCIA N. KENISTON

Stanford University, A. B.

MISS MARY E. MCGLOTHLIN

University of Missouri and
Teachers' College, A. B., B. S.
University of California, M. S.

MISS ALICE TYLER

University of California, B. S., M. S.

GUYBERT P. CAHOON

Hamline University, B. S.
University of Minnesota.

H. J. SNOOK

University of California, M. S.

MISS MYRTLE E. OLSEN

University of California, A. B.
Graduate Study, University of California.

ART AND MUSIC DEPARTMENT

MISS ELIZABETH MONTGOMERY

University of California.
Art Institutes—Chicago, San Francisco,
Berkeley.

MISS AMY PAHL

San Francisco Institute of Art,
New York School of Fine Arts.

ANDREW C. BLOSSOM

Private Teacher.

HOME ECONOMICS DEPARTMENT

MISS ADA E. ALEXANDER

Simmons College, B. S.

MISS GRACE FOWLER

Mills College, B. L.

MISS FLORENCE H. GONDRING

Columbia University, B. S., M. A.

MISS CONSTANCE POST

Santa Barbara Teachers' College

PHYSICAL EDUCATION DEPARTMENT

MISS ANNABEL BRADSTREET

Oberlin College, A. B.
Dennison, M. A.

MISS GRACE U. BLISS

University of California, A. B.

MISS ELIZABETH HILL

Oberlin College, A. B.

J. C. CAVE

University of Washington.

HARRY B. LENZ

Santa Barbara Normal.

WALLACE L. MCKAY

Washington State College, B. S.

COMMERCIAL DEPARTMENT

LAURANCE N. PEASE

Business College.
State Normal.

MISS ELIZABETH CARDEN

University of California.

J. H. CARMICHAEL

San Jose Normal.

MISS LUCY E. CROSBY

Colby College.

MISS GRACE HARRIMAN

Radcliffe College, A. B.
Harvard University.
Stanford University.

BEN. H. LEWIS

Kansas Teachers' College, B. S.
Graduate Work at Stanford and
University of California.

A. R. REELHORN

Manchester College.

MISS M. ALOYS DALY
University of California Summer
Sessions.

R. W. DECKER
Western Normal, Business College.

MISS LILIEN EBERHARD
Four Summer Sessions of University of
California.

B. F. DUFF
Business College.

MISS JESSIE H. COLEMAN
Pennsylvania College, Ph. B., A. M.
Bryn Mawr.

MISS ANNE ABRIGHT
Stanford University, A. B.

MISS BERNADINE UNGERSMA
University of Washington, A. B.

B. I. VAN GILDER
Valparaiso

CHARLES J. WILLIAMSON
Oregon Agricultural College, B. S.
Graduate Work, University of California.

COMMERCIAL ENGLISH DEPARTMENT

MISS LAURA J. BRIGGS
University of California, A. B.

MRS. EVELYN VAN VLEAR
Stanford University, A. B.

MISS ALICE McINNES
University of California, B. L.

STUDY HALL

HOMER S. TOMS, University of Michigan, A. B.

PART TIME DEPARTMENT

FLOYD R. LOVE
Chicago University.

ALVIN H. EILERT
Stout Institute, Northwestern University.

MISS ALMA M. POOL
Western Normal.

MRS. GERTRUDE HEALD
University of Washington.
University of California.
Stanford University.

MRS. ELIZABETH MOULTON
Six Summer Sessions University of
California.

VOCATIONAL DEPARTMENT

MISS IVA B. PERRY
San Jose Normal.

JOHN M. BOND
University of Illinois, B. S.

EDWIN L. PISTER
Santa Barbara Normal.

JAMES A. SMITH
Stockton Teachers' Training
University of California Summer School.

ALEXANDER N. DAVIES
Art School.

J. H. HARRIS
Trade, ten years.
Graduate California School Mechanic
Arts.

EDWIN D. COMER
Trades.

CHARLES LIBHART
Trade, five years.

IRA VAN VLEAR
Santa Barbara Normal

LIBRARIAN

MISS MILDRED SMITH, Stanford University, A. B., A. M.

OTHER EMPLOYEES

MRS. LAURA L. MAYNE
Matron.

MRS. MARIE K. WRIGHT
Secretary.

MISS GERTRUDE ROBBINS
Attendance Clerk.

MISS LUCILLE GADBURY
Office Assistant.

MISS MILDRED GRANT
Office Assistant, Commercial and Part
Time Offices.

MRS. CECIL NEEDHAM
Assistant Night School Office.

MRS. A. M. DANIELSON
Cafeteria Manager.

MRS. MARY HUMBERT
Janitress.

JOSEPH BOWMAN
Head Janitor.

THOMAS FORD
Janitor.

J. W. HOLT
Janitor.

E. C. WOLFE
Janitor.

FRANK TURNER
Engineer.

GERHARD REIMERS
Gardener.

MARTIN MULTHARF
Assistant Gardener.

Service

*May service be the measure of our
day,*

*The sesame that opes the close-
sealed heart!*

*Without its summons, who would
play his part*

*Amidst the gloom and doubt that
bars the way?*

*For these are times to try men's souls
and sway*

*The bravest barterer in Life's trou-
bled mart.*

*We stare about and scarce dare
make a start;*

*Standards seem lost, and we like
sheep astray.*

*Then Service like a beckoning
angel holds*

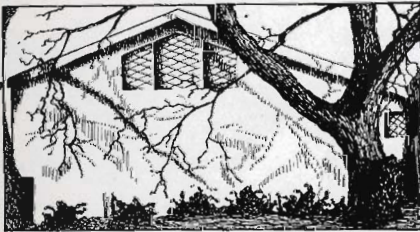
*Her forward-pointing finger to our
gaze.*

Before our eyes a vision fair unfolds;

*A path lures sweetly on through
all the maze:*

*And on we tread sharing creation's
plan*

*To make this earth a better home for
man.*



To the Class of 1925

Boundless the dreams of nineteen
twenty-five:
Some upon riches place their heart's
desire:
Others like Orpheus love the tuneful
lyre,
While some for glory fondly hope
and strive
By writing poetry that will survive.
The laws of state kindle some souls
with fire:
In science one would fain become a
sire—
Will all these luring fancies ever
thrive?
The bird of night cries bitterly, "Ah
no,"
For paths by Fate contrived change
course each day,
Yet lead to pinnacles crowned oft
with joy
When Life has taught each yearning
heart to know
That only power to make one's
brothers gay
Can yield one happiness without
alloy.

—AURELIA DENTONE.