

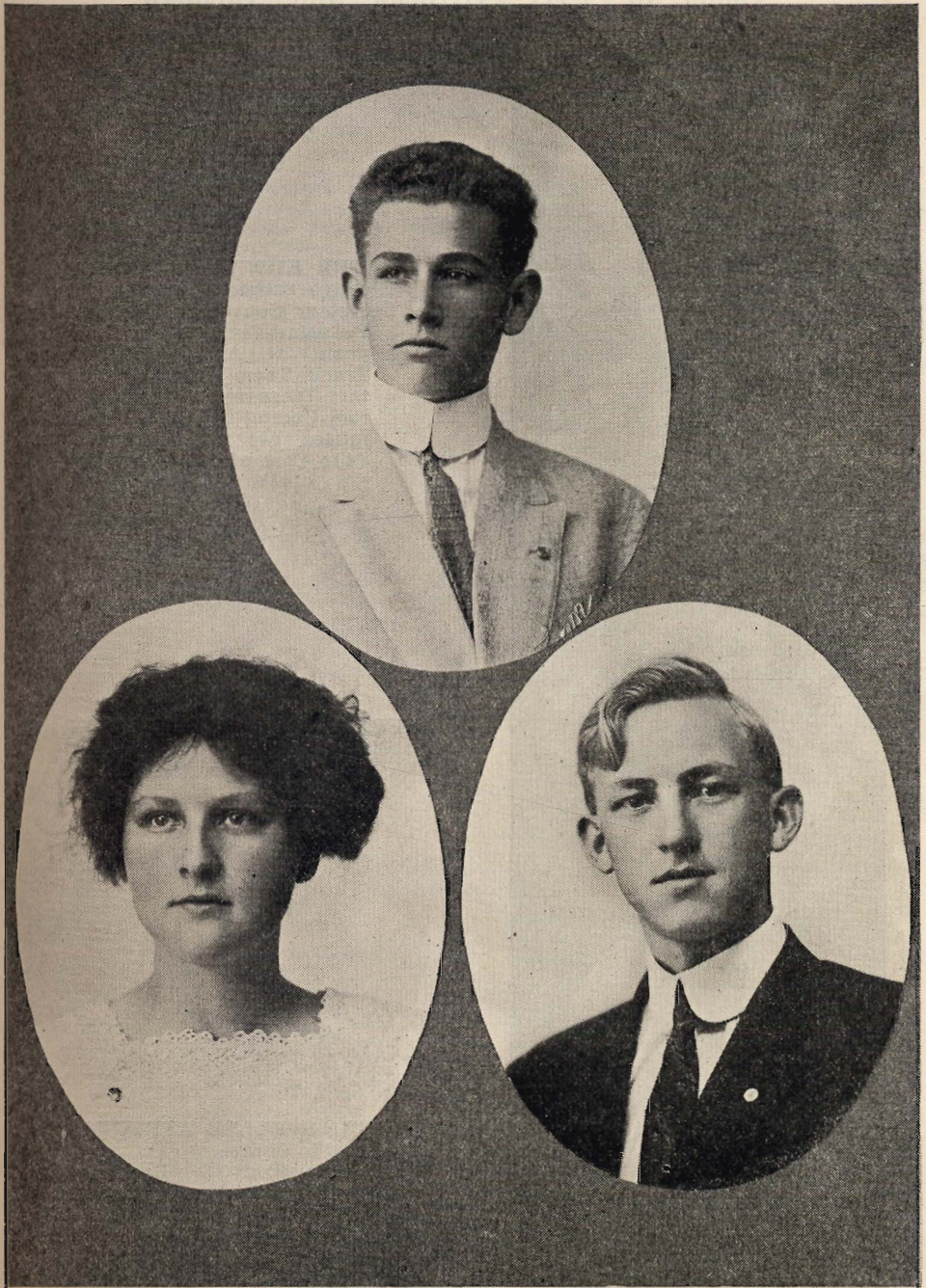


STUDENT CONTROL COMMITTEE.

Violet Schlichtmann
Harriet Guernsey
Ila Tretheway

Louie Beanman
Sherwood Norton, Pres.
Harold Webber

Melville Levy
Richard Lauxen
Genevieve Tully



SENIOR CLASS OFFICERS.

James Budd McMahan, Pres.

Genevieve Wyllie, Vice Pres.

Walter E. Andrews, Sect.-Treas.

Class of 1912 Records and Pictures



WALTER EDWARD ANDREWS
Elective course.

Secretary Conventus Latimis (3);
Debating Club (1-4); Class Sar-
geant at Arms (3); Junior
Track Team (3); Class Secre-
tary-Treasurer (4); Class His-
tory Committee (4); Plate Com-
mittee (4); Picnic Committee
(4); Cast of "The Rivals" (4).

HERMA ELEANOR ANDERSON
Elective Course.

Class Plate Committee (4).

GEORGE WELLER ATHERTON
Scientific Course.

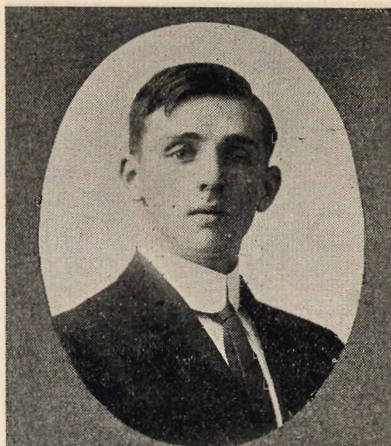
Class President (3); Baseball (4);
Dance Committee (2-3); Stud-
ent's Affairs Committee (2);
School Pin Committee, Pro-
gram Committee (4).

THE GUARD AND TACKLE

CLYDE LEON BANKS

Elective Course.

Senior Baseball Team (4); Class
prophecy Committee (4); Cast,
"The Rivals, (4).



MILDRED HORTENSE BEATIE

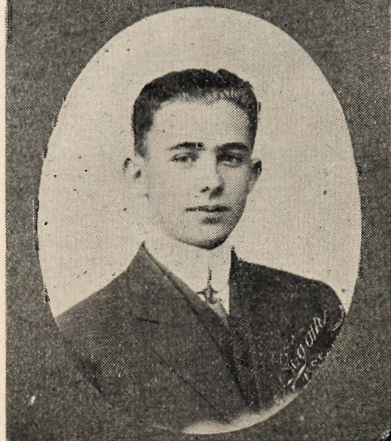
Elective Course.



LOUI CHARLES BEAUMAN

Elective Course.

Cast "The Rivals"; Student Con-
trol Committee (3); President
Debating Club (4); Chairman
Senior Flower Committee.



THE GUARD AND TACKLE



CARRIE ELIZABETH BEAUMAN
Elective Course.
Candy Committee for "The Rivals"
(4); Chorus for "The Rivals"
(4); Color Committee (4).

IRENE MARIE BREIDENBACH
Elective Course.

FRANCES MARGARET BRU
Elective Course.

THE GUARD AND TACKLE

HELEN WHEELER CLOWES
Elective Course.
Picnic Committee (4).



BEATRICE LOUISE COHN
Elective Course.
Folk Dance "The Rivals" (4).



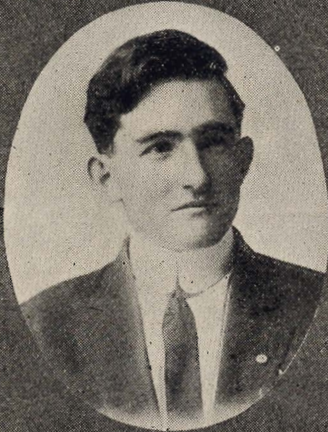
EUNICE MILDRED CONDUCT
Elective Course.



THE GUARD AND TACKLE



HENRIETTA ELOISE CONTAT
Elective Course.



ALDEN LLOYD COWIN
Elective Course.
Class Football Team (1); Class
Track Team (3-4); Class Base-
ball Team (4); Football Man-
ager (4); Football Team (4);
Motto Committee (4).



ERMA MADELIENE CRAMER
Elective Course.
Vice President Class (2); Commit-
tee Dance and Hop (2); Con-
ventus Latimis (2); Art Staff
Guard and Tackle (3); Com-
mittee Junior Dances (3); Sen-
ior Decoration Committee (3);
Program Committee Conventus
Latimis (3); Reporter Guard
and Tackle (4); Senior Dance
Committee (4); Folk Dance of
"The Rivals" (4); Picnic Com-
mittee (4); Commencement
Printing Committee (4).

THE GUARD AND TACKLE

LILLIAN BRUMEL DALEY

Elective Course.
Class Program Committee (4).



MARION DOZIER

Elective Course.
Dance Committee (2); Vice President Latin Club (3); Dance Committee (3); President Latin Club (4); Reporter Guard and Tackle (3); Reporter Guard and Tackle (1); Assistant Editor Girl's Guard and Tackle (3); Assistant Editor Guard and Tackle (4); Senior Play Committee (4); Exchange Editor of Guard and Tackle (4); Manager of Girl's Basket Ball Team (4); Library Committee (4); Senior Dance Committee; Author "W. A. T.? Revelation" (4); Class Song (4); Senior Ball Committee (4).



MARRIETTA HENRIETTA DU BOISE

Elective Course.



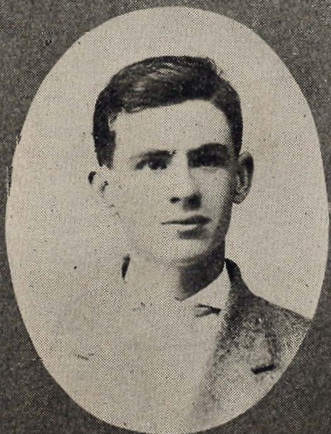
THE GUARD AND TACKLE



GLADYS LOUISE FAY
Commercial Course (4 years).
W. A. T. Decorative Committee
(4); Commencement Program
Committee (4); Finance and
Refreshment Committee (4);
Folk Dance "The Rivals."



NEIL COOK FERGUSON



THEODORE FINKBOHNER
Elective Course.

THE GUARD AND TACKLE

HAZEL EMILY FRENCH

Elective Course.

Basket Ball (2); Senior Flower Committee (4); Folk Dance and Usher in "The Rivals."



RUDOLPH LEONARD GIANELLI

Elective Course.

Chairman Dance Committee (2-3); School Seal Committee (3); Junior Decorating Committee (3); Manager Boy's Basket Ball (3); Supervising Manager Girl's Basket Ball (4); Baseball (2-3); Captain and Manager (4); Track (3); Football (3-4); Executive Committee (3-4); Chairman Class Day Program (4); Athletic Editor Guard and Tackle (4); Manager of "The Rivals."

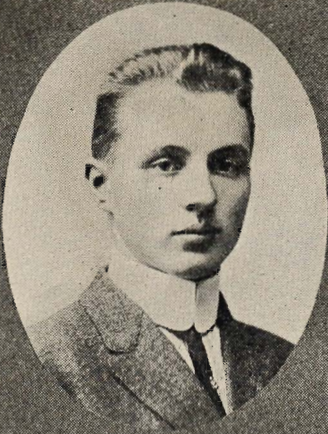


PEARL HAZEL GILMOUR

Elective Course.



THE GUARD AND TACKLE



FRED PACIFICO GIOTTONINI JR.
Scientific II.
Fiddler in "The Rivals" (4); Sen-
ior Color Committee (4):



MARY ELNOR GUERNSEY
Elective Course.



ELMER ELIAS GUMPERT
Elective Course.

THE GUARD AND TACKLE

STELLA BEATRICE HAMMOND
English and Modern Language
Course.

Student Control Committee (3);
W. A. T.? Lunch Committee
(4); Program Committee W. A.
T.? Dance (4); W. A. T.? Deco-
rating Committee (4); Folk
Dance and Usher "The Rivals";
Class History Committee (4).

INA HITCHCOCK
Elective Course.

ALFRED HOLT
Elective Course.



THE GUARD AND TACKLE



JULIUS HORNING
Elective Course.

LILLIAN ALFKE HOUGH
Elective Course.

MILDRED KATHLEEN HUGHES
Literary Course.
Conventus Latimis (3-4).

THE GUARD AND TACKLE

LOIS ESTHER KEYES
Elective Course.
Cast of Senior Play "The Rivals."



HARRIETT MAUDE KIRKMAN
Commercial (4 year) Course.
W. A. T.? Decorating Committee
(4); Commencement Committee
(4); Refreshment Committee
(4); Folk Dance in "The
Rivals" (4).



HARROLD CASTLE MACQUARRIE
Elective Course.
Class President (1-2); Coach for
Winning 100 lbs. Relay Team,
1910; Sophomore Representative
on Constitutional Committee
(2); Yell Leader (3-4);
Decorative Committee (3);
Chairman of Comencement Pro-
gram Committee (4); Track
Team (4); 1912 Vaudeville;
Manager of Guard and Tackle
(4).



THE GUARD AND TACKLE



RUTH LAURETTA MAHAFFEL
Mediaeval and Modern Language
Course.
Reporter Guard and Tackle (4);
Folk Dance in "Rivals" (4).



EARL W. McCOMAS
Elective Course.
Basket Ball (4); Class Day Com-
mittee (6).



EDWARD G. McCAUSLAND
Elective Course.
Cast of "The Rivals"; Senior
Play Committee; Commence-
ment Guard and Tackle Staff.

THE GUARD AND TACKLE

JAMES BUDD McMAHAN

English and Modern Language Course.

Guard and Tackle Staff (1); Cast "Receptgegen Schwiegenmutter" (3); Chairman Decorating Committee (3); School Notes Editor Guard and Tackle (4); President Class (4); Vaudeville (4); Secretary-Treasurer A. S. S. H. S. (4); Class Will (4); Cast "The Rivals" (4); Assistant Manager Guard and Tackle (4).

GEORGE FULTON NEWTON

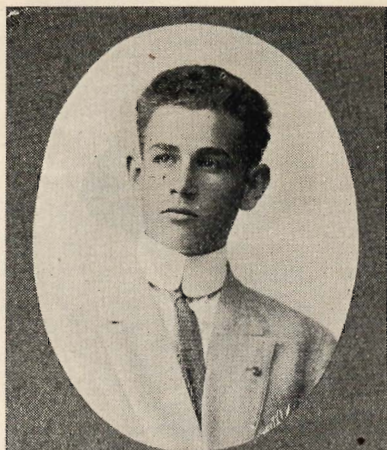
Literary Course.

Latin Club (3-4); Debating Club (4).

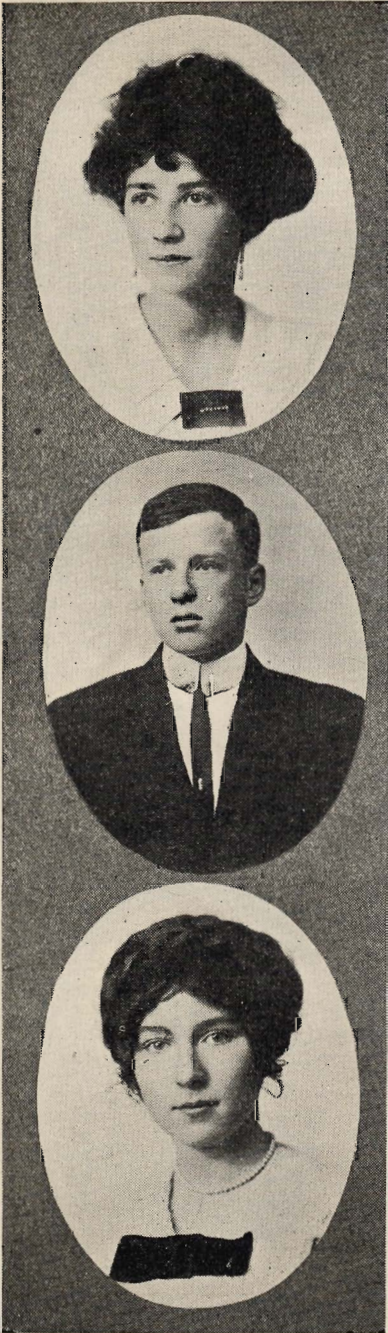
ENID FRANCES NIXON

Elective Course.

Decorating Committee (4); Folk Dance and Usher "The Rivals" (4); Library Committee (4); Commencement Committee (4).



THE GUARD AND TACKLE



LILLIAN NORTON

Elective Course.

Cast of "The Rivals" (4); Senior Play Committee (4); Class Gift Committee (4).

SHERWOOD NORTON

P. G. H. S. Basket Ball Team (1); Yell Leader (1); P. G. H. S. Basket Ball Team (2); Yell Leader (2); School Seal Committee (3); Decorating Committee (3); Student Body President (4); Class Will (4); Cast "The Rivals"; Football (4); Basket Ball (4); Chairman Student Control (4); Chairman Executive Committee (4); Election Board (4); Class Motto Committee (4).

LOIS BERNARDINE OSER

English and Modern Language Course.

W. A. T.? Dance Committee (4); Decorating Committee (4); Library Committee (4); Cast of "The Rivals" (4); Class History (4).

THE GUARD AND TACKLE

RUTH IRENE OWENS

Elective Course.

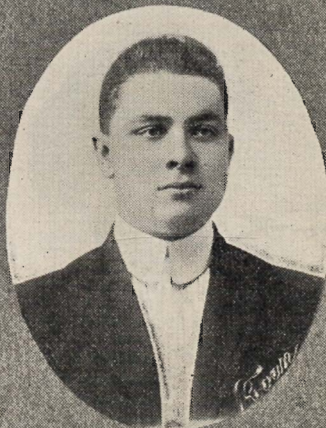
W. A. T.? Pin Committee (4) Class
Prophecy (4); Class Flower
Committee (4).



JOHN BORDEN PARDOE

Literary Course.

Josh Editor Guard and Tackle (4);
Cast of "The Rivals" (4); Pro-
gram Committee Conventus Lati-
mis (3); Class Gift Committee
(4); German Club House Com-
mittee (4).



CARRA BETH PAYNE

Elective Course.

Program Committee (4); Folk
Dance "The Rivals" (4).



THE GUARD AND TACKLE



LUCY AVIS PEARSON
Elective Course.

EDITH MIGNON RIDENOUR
Commercial Course.
Student Body (2); Basket Ball
(1), (2).

RAE RUA RUSSEL
Literary Course.

THE GUARD AND TACKLE

THERESA LIDWINA SALA
Elective Course.



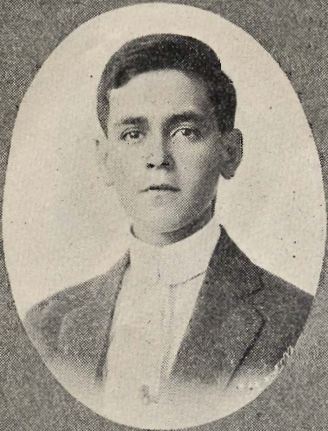
BESSIE MAE SHAFFER
Commercial Course.



GEORGIA EVELYN SHAFFER
Commercial Course.



THE GUARD AND TACKLE



NATHAN SINAI

Elective Course.

Sargeant at Arms (1); Cast "She Stoops to Conquer" (3); Cast "The Rivals" (4); Pin Committee (4); President of Latin Club (4); Baseball (4); Manager Guard and Tackle (4):



WINTHROP SMITH

Scientific Course.

Cast of "The Rivals" (4).



HORACE SPARE

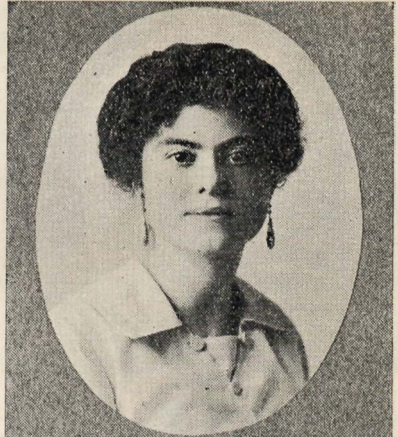
Literary Course.

THE GUARD AND TACKLE

IVY LEONA SHAFFER

Literary Course.

Decorating Committee (3); Decorating Committee (4); Cast of "The Rivals" (4); Class Plate Committee (4).



MARIE VIOLET SCHLICHTMAN

Elective Course.

Representative on Student Control (4); Class Gift Committee (4).



EMMA GERTRUDE SCHNEIDER

Elective course.

Cast of German Play "Receptgegen Schweigemutter"; President W. A. T. Club; Secretary and Treasurer of the German Club; Reporter of Guard and Tackle (1).



THE GUARD AND TACKLE



ROBERT CLARENCE STEPHENSON
Literary Course.

President Conventus Latimis (3);
Treasurer of Conventus Latimis
(4); Chairman Literary
Committee (3); Debating Club;
Arrangements Committee of
"The Rivals"; Press Reporter of
"The Rivals" (4); Editor of the
Guard and Tackle.

MIRABEL MINNIE STEWART
Elective Course.

Reporter Guard and Tackle (1);
Vice President (3); Society
(4); Decoration Committee
(3); Vaudeville (4); Vice Presi-
dent Associated Students (4);
Election Board (4); Dance Com-
mittee (2); Dance Committee
(3).

GENEVIEVE WYLLIE
Elective Course.

Vice President (1); Student Con-
trol (2); Printing Committee
(4); Vice President (4).

ALBERTA VIOLA WHALE
Elective Course.

Color Committee (4); Folk Dance
and Usher "The Rivals" (4).