

GOLDEN GATE PARK

Contains 1,013 acres, 400 of which are under cultivation. It was once shifting sand-dunes and has since been reclaimed and beautified by the City.



INTERIOR OF SUTRO BATHS



PARAPET AT SUTRO HEIGHTS



PALM AVENUE SUTRO HEIGHTS

SUTRO HEIGHTS

Are adjacent to Cliff House, located on a magnificent battlement. The Sutro Baths contain a swimming tank 300 feet long with capacity for two thousand bathers. The tanks are filled with sea water deposited in a rocky basin by the action of the waves outside.



MISSION DOLORES, SAN FRANCISCO

Founded October 8, 1776, by Don Jose Moraga. For over fifty years this was the seat of religious authority for a considerable population of Indians and Mexicans.



No. 959. Presidio.  
Copyrighted 1902. Waters & Co

#### THE PRESIDIO

U. S. Government reservation—contains 1,500 acres, with a frontage on the bay of 1 1/2 miles. Founded in 1776 by Friars Parlon and Cambon, and was the first settlement within the present limits of San Francisco.



MOUNT TAMALPAIS AND MILL VALLEY

Across the bay from San Francisco.



THE STATE CAPITOL

At Sacramento, cost \$3,000,000 and is a very handsome and imposing structure. From the dome, 220 feet high, an extensive view can be had, embracing the Sierra Nevada and Coast Range Mountains, and the Sacramento Valley.



MOUNT SHASTA

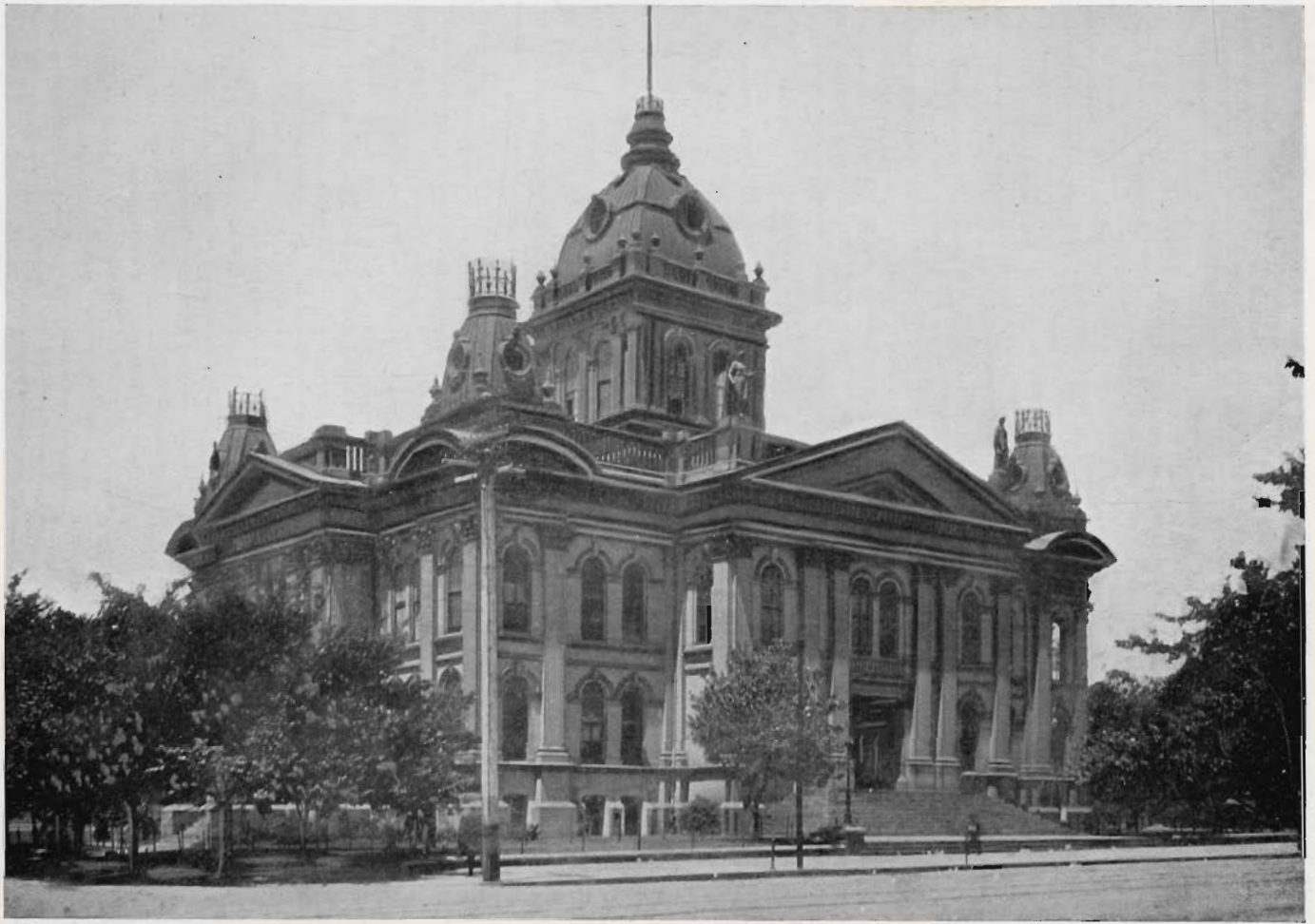
In Siskiyou County, is 14,440 feet high, of volcanic structure and extremely difficult of ascent. It is visible for more than 100 miles in all directions.



BROADWAY LOOKING NORTH FROM TWELFTH STREET, OAKLAND

Oakland, named from the number of its evergreen oaks, occupies a magnificent site overlooking the Bay of San Francisco and the Golden Gate. It is connected by steam ferries with San Francisco. The business streets of Oakland are noted for their width and well-kept appearance.





ALAMEDA COUNTY COURT HOUSE, OAKLAND

One of the finest edifices in California devoted to the purpose for which it was built. This structure accommodates all the offices of the county officials, and here are deposited the archives of this section of the country.



GENERAL VIEW OF STOCKTON

Stockton, the county seat of San Joaquin County, is located seventy-eight miles northeast of San Francisco. The city was founded in 1849 and received its name in honor of Commodore Robert Field Stockton, U. S. Navy, who took possession of California for the United States. Stockton contains many beautiful buildings and is an enterprising, progressive and up-to-date American city.



FIRST STREET, SAN JOSE

San Jose, a city of fifty thousand people, is located forty miles south of San Francisco, in Santa Clara County. Its business area consists of a series of handsome and most impressive blocks which line splendid well-paved streets. It is fast becoming the great resort city of California.



ST. JAMES HOTEL AND MCKINLEY MONUMENT, SAN JOSE

The St. James Hotel is one of the notable structures of San Jose. It is located at the corner of St. John and First streets near the center of the city. The McKinley Monument is an artistic tribute to the memory of the late president of the United States.



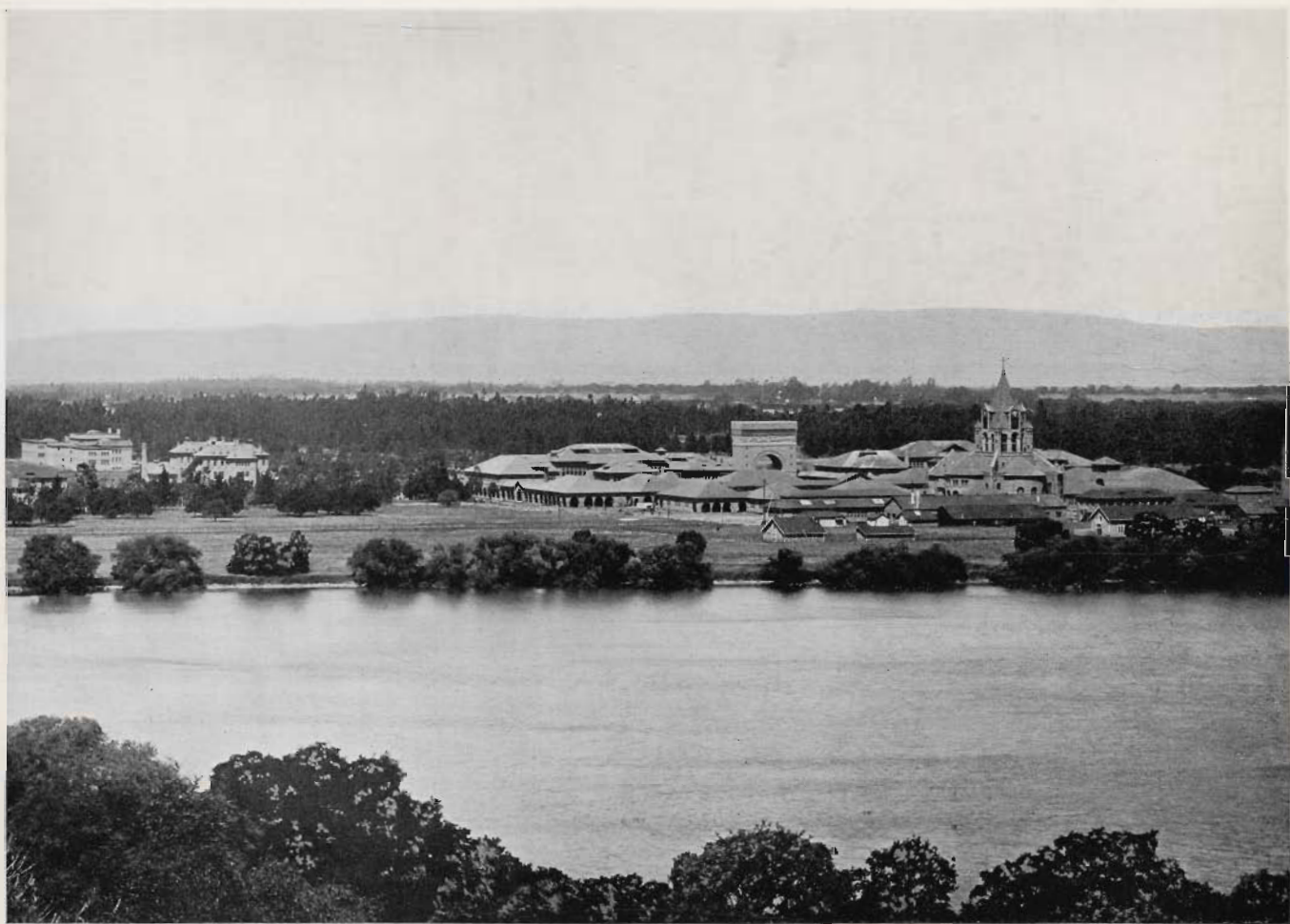
ST. CLAIRE CLUB HOUSE

The St. Claire Club is an organization of business and professional men with the prettiest mission club house in the United States.



RANCH HOUSE, SANTA CLARA COUNTY

One of the many beautiful ranch houses for which this county is famous.



GENERAL VIEW OF STANFORD UNIVERSITY, PALO ALTO

The Leland Stanford, Jr. University, founded in 1884 by Mr. and Mrs. Stanford in memory of their son, was opened to students in 1891. The value of the endowment is thirty million dollars. The buildings are considered the finest group in the world devoted to educational purposes.