



Engine Company No. 1—2nd and L Streets

Sacramento, Fast Growing Industrial Metropolis

By Irvin Engler

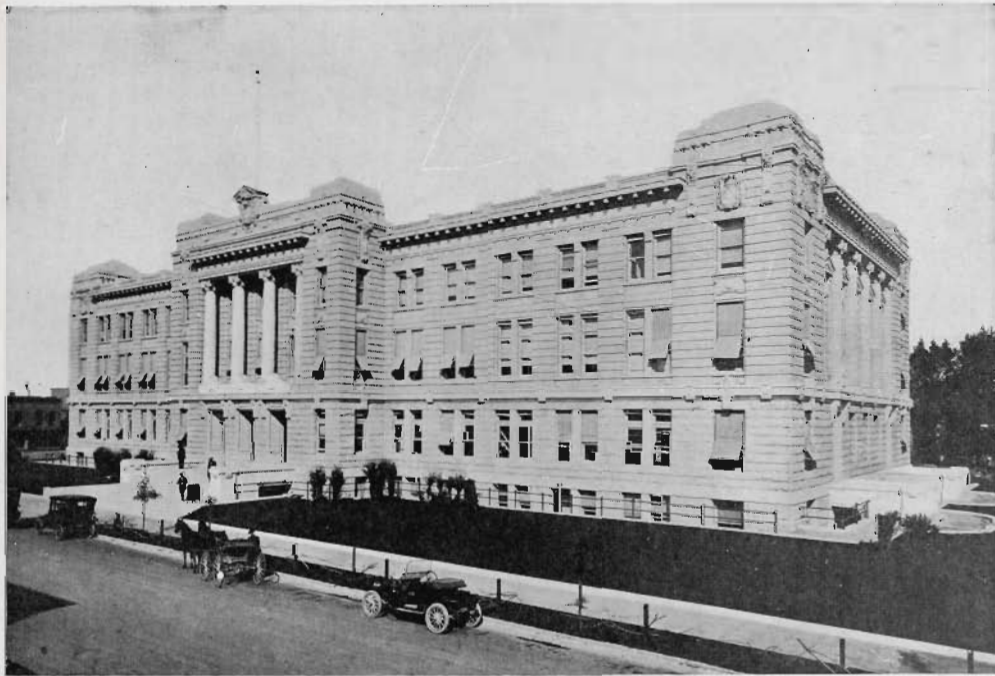
Secretary-Manager, Sacramento Chamber of Commerce

Of paramount importance industrially are the natural resources of a city and its tributary territory. Sacramento may be said to have every natural resource required by modern industry. For most lines of industry, it is a veritable paradise.

Sacramento has ample water for both domestic and industrial uses, supplied by the municipality at low cost from the Sacramento and American rivers. The water is filtered and

west across the Sacramento river is West Sacramento. Numerous new industries have located in these suburbs recently.

Raw materials of nearly every class are found in almost limitless quantities within the tributary territory. Sacramento is the distribution center for a great inland agricultural empire, the annual farm products of which exceed, according to present estimates, \$135,000,000 annually. Citrus fruits grow luxuriantly within



Sacramento County Court House

chlorinated in a new \$3,000,000 filtration plant and high pressure is maintained.

Its equable climate permits the operation of plants 365 days in the year, if desired. The average summer temperature is 72 degrees, although the mercury passes 100 a few days in late summer, while the average winter temperature is 48 degrees. Seldom does the mercury drop below 32 degrees. The normal rainfall is 20 inches. Beautiful trees lining the residential streets insure coolness even on the hottest day.

There is ample ground for expansion. The city now contains 13.92 square miles within the incorporated area, but it can expand ten to fifteen miles both east and south. Across the American river to the north is the rapidly growing suburb of North Sacramento, while to the

territory, the oranges maturing a month ahead of the southern crop. Within the territory are the largest cattle and sheep ranches in the State, furnishing hides and wool.

Within 100 miles of the city are almost inexhaustible deposits of industrial and structural minerals, which form the basic raw materials of industry. Few of these deposits are yet developed, as there are no industries to utilize them. Mountains of highgrade iron ore are to be found a little farther to the north, although there is an immense deposit within sixty miles of the city, and a good grade of sub-bituminous coal is being developed about forty miles south of the city in Amador County. With the exception of salines, practically every mineral used in industry is found in commercial quantities in



Engine Company No. 4—1214 26th Street

the city's tributary territory. Space does not permit listing these minerals.

Construction of the ship canal would undoubtedly result in smelters being erected near the city, which would provide many byproducts for industrial use. As the world's finest mineral paint deposits are found within 100 miles of the city, immense paint factories will eventually be built, as well as potteries, as extensive beds of finest pottery clays are available.

Sacramento is served by two large electric power companies, with transmission lines coming from immense hydro-electric plants in the high Sierras, and two gas companies, one of which is operating seven natural gas wells within the city. The second unit of one of the largest steam electric generating plants in the country insuring uninterrupted power service in an emergency, was recently completed at a cost of more than a million dollars, by one of the power companies, the Pacific Gas and Electric Co. Power and gas rates are low, and the average gas and electric bill for a 6-room house is \$4.50.

In addition, the city has created a public utility district, the Silver Creek Power Project, and proposes to erect its own municipal hydro-electric plant, sufficiently large to meet all future needs. Recently what is said to be the largest gas storage tank in the West was completed in Sacramento.

Sacramento is California's greatest clearing house of labor, particularly of seasonal workers. From here the labor needs of not only Northern California, but also Nevada and Oregon are filled. Both skilled and unskilled laborers flock to Sacramento when in search of employment, and industries have no difficulties in maintaining full forces. Owing to the fact that the immense canneries in the city provide seasonable work for the wives and daughters of workers, the best class of labor seeks permanent employment in Sacramento.

At present the scale of wages in the principal crafts is as follows for an eight-hour day: Carpenters, \$9; cement workers, \$8.35; electricians, \$10; bricklayers, \$11; iron workers, \$9.25; lathers, \$9.25; mechanics, \$6 to \$8; common labor, \$5; millmen, \$7.40; painters, \$9; plasterers, \$12; plumbers, \$10.50; sheet metal workers, \$10; roofers, \$9; glaziers, \$8. Other wages include: Bookkeepers, \$100 to \$175 per month; clerks, \$75 to \$175 per month; stenographers and typists, \$75 to \$150 per month; sign writers, \$10 per day; truck drivers, \$30 to \$33.50 per week;

warehousemen, \$4.50 to \$6 per day; farm labor, \$3 per day and board.

Few communities in the world can boast of the transportation facilities possessed by Sacramento. In fact, it is a hub of all forms of transportation. Two transcontinental railroads, the Southern Pacific and Western Pacific lines, directly serve the community, while an interurban electric line affords connection with a third, the Santa Fe, at Stockton. Three transcontinental routes are afforded by the Southern Pacific, which enters the city from the four points of the compass; the Shasta route, via the Northwest; the Oregon route, directly east, and the Southern route, via the Southwest.

In addition, Sacramento is served by a network of fast electric interurban trains, the Sacramento Northern railroad, reaching to Woodland, Marysville, Colusa, Oroville and Chico, lying to the west and north; the Central California Traction Company, giving service to Lodi, Stockton, Modesto, Escalon and Turlock through connections, and the San Francisco-Sacramento "Short Line" railroad, providing an electric service to the bay cities, via Bay Point, Concord and Walnut Creek.

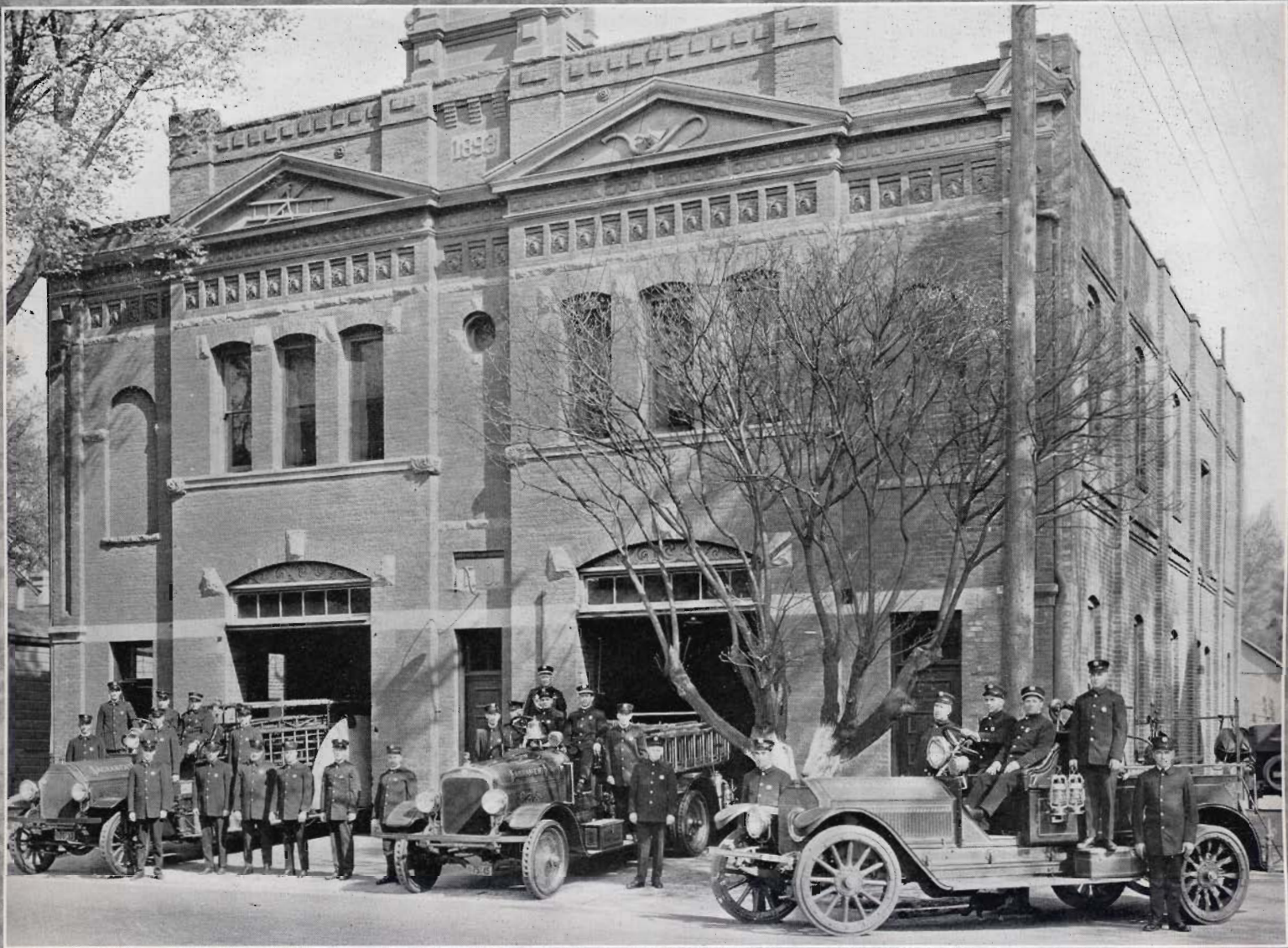
One hundred and sixty passenger trains arrive and leave Sacramento daily.

Sacramento has excellent wharfage and warehouse facilities. There are now 4,734 linear feet of wharves, of which 1,850 are municipally owned, and 201,000 square feet of warehouse space, of which the city owns 74,000. The city is completing the building of new wharves and modern warehouses at a cost of \$250,000, while the Southern Pacific has rebuilt its docks, burned last year. A belt railroad serves the wharves and industries facing them. Across the river are other docks and warehouses, and between Sacramento and the mouth of the river are a great number of smaller wharves, landings, warehouses and canneries, built along the banks.

Finally, an airplane passenger service has been inaugurated between Sacramento and San Francisco, so that the city can justly be said to enjoy every transportation facility.

BOARD OF SUPERVISORS Sacramento County

Charles S. Alvord.....	First District
R. E. Callahan.....	Second District
H. K. Johnson (Chairman).....	Third District
John A. Russi.....	Fourth District
John L. Scholefield.....	Fifth District



Engine Company No. 3 and Truck No. 2—19th, L and M Streets

In Appreciation

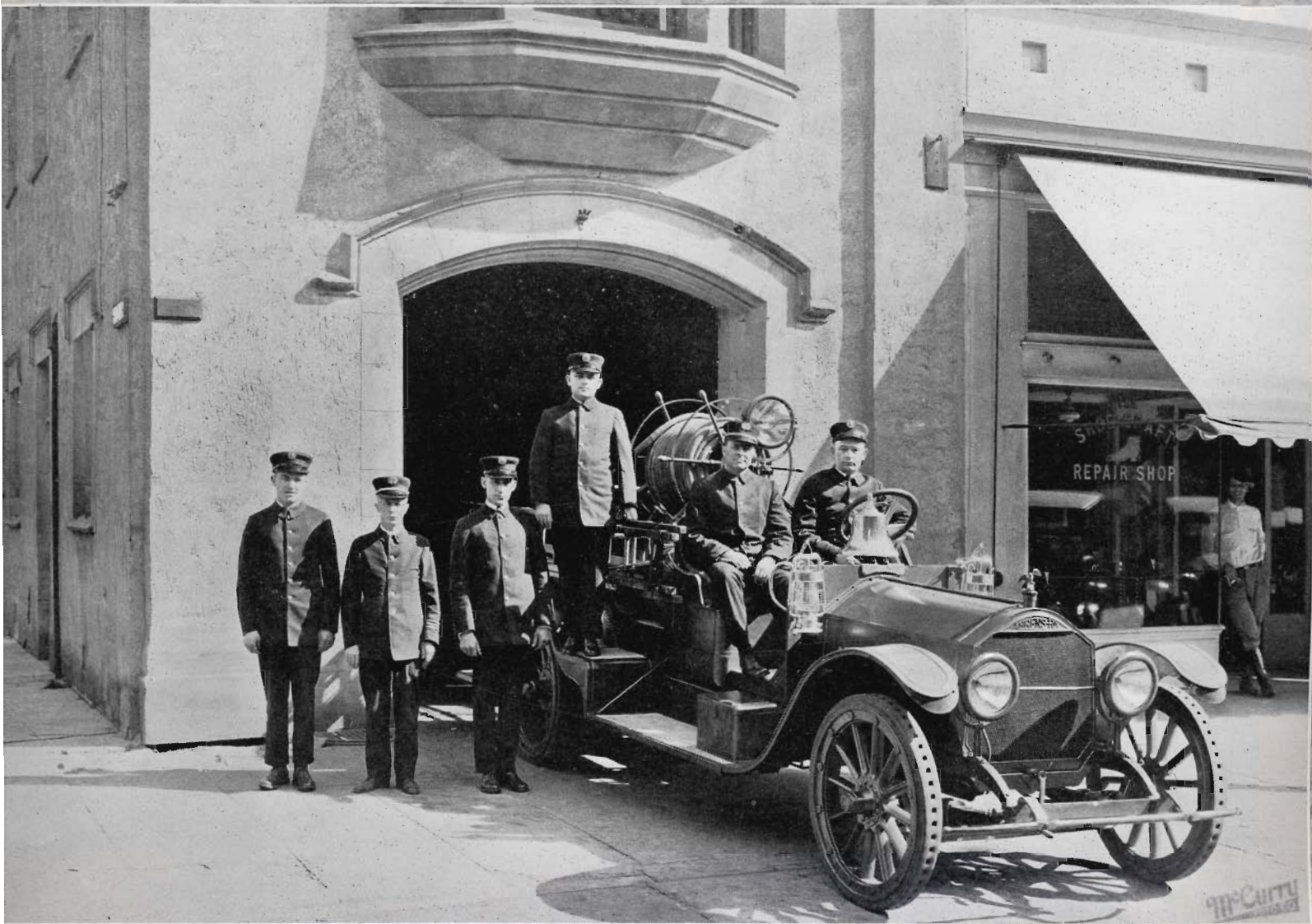
The assistance and good wishes of the business and professional men and leading citizens of Sacramento have made possible the publication of this Review and the members of the Department wish to express their heartfelt thanks to them with the sincere hope that this publication may prove not only of passing interest but also of lasting merit in promoting the welfare of "THE HEART OF CALIFORNIA" and the Department.

Joseph W. Mento	Golden Eagle Hotel	C. F. Gannon
Capital Nursery	J. W. Terrell	Tortola Cafe
Kimball-Upson Co.	Anderson Sheet Metal Co.	J. F. Adams, Jr.
Auto Finance Co.	S. H. Jones	Jenkins & Elton
Lincoln Motor Car Agency	Biltwell Garage	H. R. Baird
American Cleaners & Dyers	J. J. Jacobs Motor Car Co.	Jefferson & Molesworth
C. H. S. Bidwell	Popert & Zagoren	Oak Park Nursery
George J. Hall	Wilson Bros.	L. Heilbron
W. A. Beattie	Ed. Annereau	Alexander Ball
Owners Plumbing & Heating Co.	Boston Store	G. Rossi & Co.
Alexander Apartments	Wood-Curtis Co.	Frank O'Brien
Pickett & Rothholz	Albert D. Smith	Globin's Grill
Chas. O. Busick	Hotel Clark	Pioneer Junk & Machinery Co.
Peters Drug Co.	Sherman-Clay Co.	E. R. Parker
Sierra Mill	J. J. Watson	Frank N. Brown
Henry & Bedeau	D. H. Mosier & Son	Charles A. Swisler
J. C. Carly Co.	Dolan Building Materials Co.	Cherry's
Richard P. Talbot	Hotel Stoll	M. M. Ebel
P. J. Wilkie	F. G. Fay	W. P. Phipps
California Garage	Giddings & Whyte	W. J. Gribbin



Engine Company No. 6 and Truck No. 3—4th Avenue, 34th and 35th Streets

Essex Lumber Co.	Chas. J. Heeseman	Walter P. Field
Johnson & Lemmon	Capital Box Factory	The Griffith Co.
J. J. Henderson	E. S. Loizeaux	Percy G. West
Healds Business College	Will J. Carragher	Hodgkins Motor Car Co.
J. D. Coyle	The Morrissey Co.	Capitol Tobacco Co.
Neil R. McAllister	James T. Gaffney	Harrison & Schwartz
Earle Plumbing Co.	Geo. C. Foss	W. Everts Downing
C. E. Marsh	Henderson Bros. Parts	Grey Pharmacy
B. E. Gaddis	H. P. Andrews	Frazier's
Hoffman Coffee Roaster	Campbell & Boutwell	Gillespie & Gillespie
Glenn Dairy	Hotel Windsor	G. W. Dufficy
Clifford A. Russell	A. M. Braddock	C. H. Carter Co.
Robert N. Bramhall	Wm. Z. Dahl	Capital Furniture Mfg. Co.
Capitol Tamale Cafe	C. J. Chittenden	Charles D. Holdener
George J. Raymond	Eatons Cleaners & Dyers	Charles L. Gilmore
Stewart-Warner Co.	Sterling P. Forrest, Jr.	J. C. Diepenbrock
G. P. Dillon	Conley's Drug Store	Harrison Cyclery
Dingley & Co.	Herold Signs	J. H. Burden
J. N. Blair & Co.	Bennett's Grocery	Ardmore Apartments
Eugene Benjamin Co.	Butler, Van Dyke & Desmond	Canton Cafe
H. P. Fischer Tile & Marble Co.	H. T. Wells	Greenewald Iron & Metal Co.
Blake, Moffitt & Towne	Peter J. Shields	Colosseum Macaroni Co.
Atlas Mortar Co.	Star Real Estate Co.	Ackerman—Carpet Cleaner
Jones Book Store	Capital Ice Co.	Grant Market



Chemical No. 1—1017 5th Street

Frederick S. Harrison	Hiram Bushell	Brooke Realty Co.
California Cooperaage Co.	Western Labor Bureau	Perry & Bartlett
Pacific Market	H. H. Day Employment Agency	California State Rice Milling Co.
McDowell & Harding	R. E. Golway	Auto Parts Exchange
Artz, Cook & Drew	China Toggery	Ed. T. Ryan
George Z. Wait	Anchor Hotel	Mayfield & Ohrt
California Rice Sales Co.	P. G. Johnson Taxi Co.	W. L. Chatterton
Blake's Dairy	Bell & LeRoy	Berry's Foundry
Wacker's Feed & Fuel Co.	T. E. Cain	J. J. O'Connor Co.
M. J. Treaster	W. E. Greehart	Dr. Frank Ohanneson
Subway Sheet Metal Works	Walter A. Perry Co.	Armstrong & Bader
Paul H. Fletcher, Pharmacy	Starkey Transfer Co.	Conrad & O'Connor
Capital City Planing Mill	E. D. Bullard Co.	Nevis & Carnie
Rutherford Bros.	Thos. H. Armstrong Co.	Sacramento Buick Co.
Straine & Pillsbury	Drs. David & Rader	Geo. C. Sellon
Arnold Brothers, Inc.	Bowen Hardware Co.	H. O. Adams
Capital Cream & Butter Co.	Leachman Furniture Co.	Beskeen & Potter
Jacob's Loan Office	Anchor Drug Co.	George P. Robinson
Boudier-McLaughlin & Jacoby	Sacramento Wool Co.	Kuechler Bros.
Leitch Roofing Co.	R. Grant Potter	E. P. Smith
Sacramento Plumbing Supply Co.	P. D. Maritsas	Popular Book Store
California Mechanical and Electrical Engineering Co.	R. Rosenberg & Son	Bowman's Auto Bodies
V. Norcia	General Equipment Co.	Capital Sand & Gravel Co.
Crispy-Chips Co.	Frank Dixon Painting Co.	W. T. Foster & Sons



Chemical No. 2—22nd, S and T Streets

Electrical Supply Co.

A. L. Johnson

Mayo Paint Co.

California Transportation Co.

D. H. McAlpine

Jas. T. Ransdall, Jr.

Fred J. Ferren

Wm. A. Rapp & Co.

Capital Clothing Co.

Henry's Law & Collection Co.

Huston and Huston

J. K. Reese

C. B. Conn

P. A. Pippitt

Gordon H. Keeney

Capital Produce Co., Inc.

J. Ward Hanner

Reliable Electric Works

R. E. Smith & Co.

Capital Mfg. & Repair Co.

Phil R. Hullins Ins. Co.

James P. Keating Co., Inc.

Joseph Saunders

Thorn's Mill & Fixture Co.

Feather River Canyon Spring
Water Co.

Thomas W. Hagerty

Geo. E. Moore Co.

P. B. Rackliffe

Gilt Edge Packing Co.

A. A. Chrisler

Peddicord Bros.

Goldsmith & Rothholz

Don Phipps, Inc.

Capital Army Store

Hickman-Coleman Co., Inc.

Drs. Ross & Ross

Hayman & Co.

W. B. Flynn

J. F. Pullen

Renschler Produce Co.

J. T. Connors

Sterling Electrical Co.

L. F. Gould

A. G. Pape

W. B. Ladue

Blamey Decorating Co.

Spurgeons

Waters, Crouch & Waters

Bryant & Bryant

The Keeney School

E. Lyman Eddy

J. S. McDannald

Cunningham & Taber

E. D. Quinn

Carl Lamus

A. J. Plunkett

Jack Cabaniss

D. F. Ferguson Ins. Co.

S. F. Lason

M. Kambara Shoe Stores

Carithers Sign Co.

Portable Garage Co.

Kelley-Clarke Co.

J. Paul Howell

Senf Draying Co.

M. W. Haworth

H. W. Pape

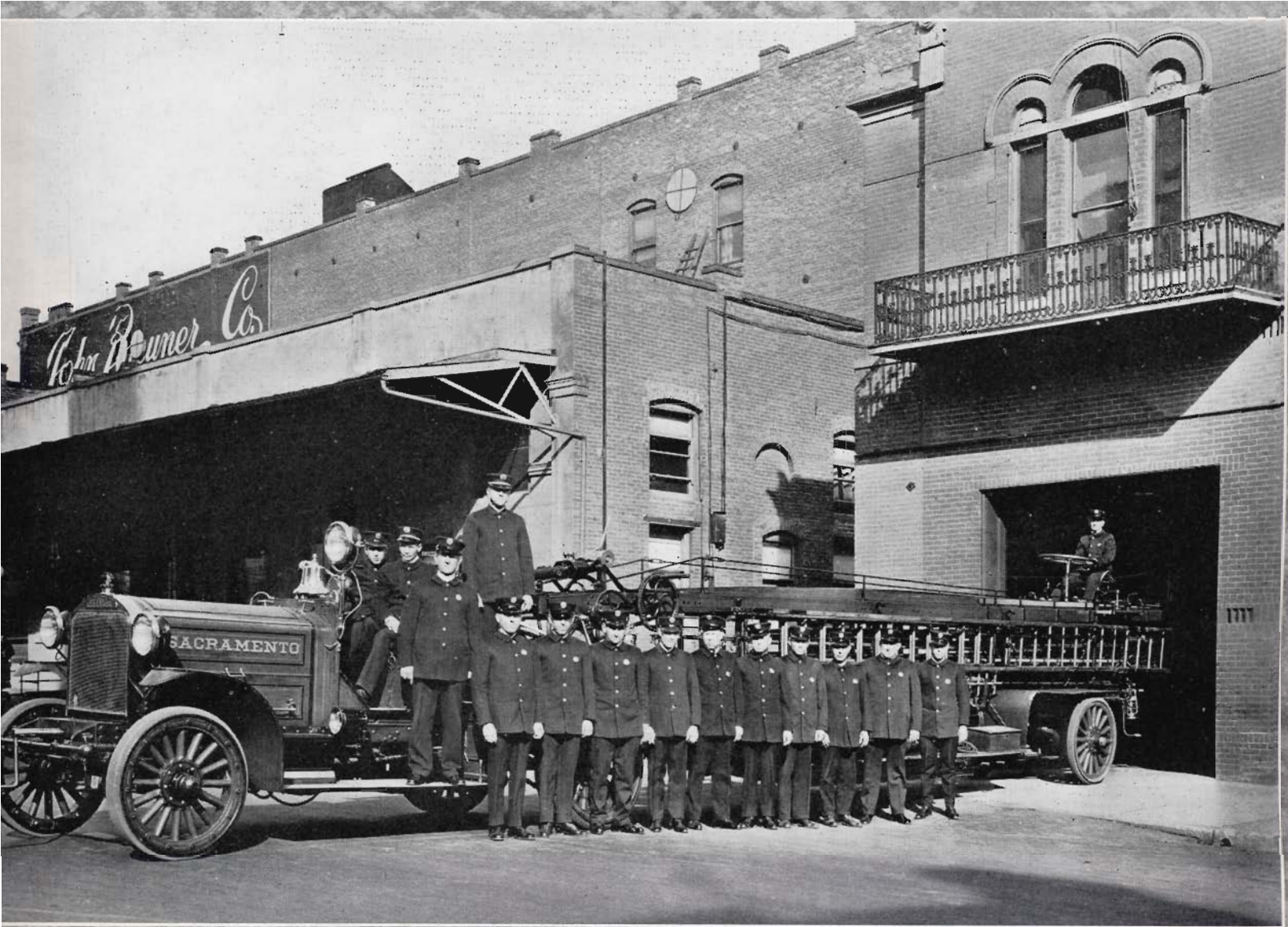
Mosaic Floor Co.

H. H. C. Lichtenwalter

Howe, Hibbitt & Johnson

John Gordon

Sacramento Wire Works



Truck No. 1—6th, K and L Streets

G. W. Wolfe Lumber Co.

L. A. White

Tilden Lumber & Mill Co.

Walters Grocery Co.

George Schelcher

L. P. Williams

F. N. Scatena

Will C. Wood

E. E. Earle

H. R. Wagner

Van Tassel Sheet Metal Works

Clyde S. Simmonds

G. B. Stahl

P. F. Reed

J. Verese

Standard School

Sacramento Pump Manufac-
turing & Supply Co.

H. W. Robertson

Sacramento Auto Wrecking Co.

Charles W. Walker

J. E. Baldwin

R. G. Scribner

S. B. Schumaker & Son

Bakersfield Garage & Auto
Supply

Sacramento Growers' Market

Capitol Catering Co.

Sacramento Engineering &
Machine Works

Frank Fuhrer

Sacramento Glass & Crockery
Co.

Scotch Tailors

R. E. Howell

Fort Sutter Floor Co.

Wm. A. Ward Seed Co.

Sacramento Barber Supply &
Cutlery Co.

Western Granite & Marble Co.

Service Garage

T. K. Dixon Painting Co.

Red Top Taxi Co.

California Welding & Cutting
Co.

York Products Co.

T. A. Gilmore

Motor Inn Garage

S. H. Chase Lumber Co.

Wilson's Furniture Exchange

Dr. E. O. Blechschmidt

Edward W. Beach

Quality Dairy

Allyn Burr Co.

Moreland Sales Corp.

A. M. Henderson

Ellis Peterson

Willard P. Rouse

Charles G. Johnson

Boulevard Meat Market

E. Windmueller

Newton E. Wise

Reeder's Welding & Machine
Works

Geo. Mugler Drug Store

West Side Dairy

Herbert R. Baker

Bon Air Apartments

Pierson's Pharmacy

Quirin Pharmacy

Bearings Supply Co.

Driver, Driver & Tade

The F. Thomas Cleaning &
Dyeing Co.

Bachman Printing & Box Co.

L. W. Nichell

Johnson Cigar Factory

J. A. Jackson

A. E. Pierson

North Sacramento Land Co.

List of Deceased Members of Sacramento Fire Department Relief Association



H. Doermer
F. Yager
A. Steen
G. Bonadurer
D. Barnes, Jr.
J. J. Laracy
W. J. Jacques
M. I. Peters
J. B. Henry
M. J. Marren
C. H. Crowell

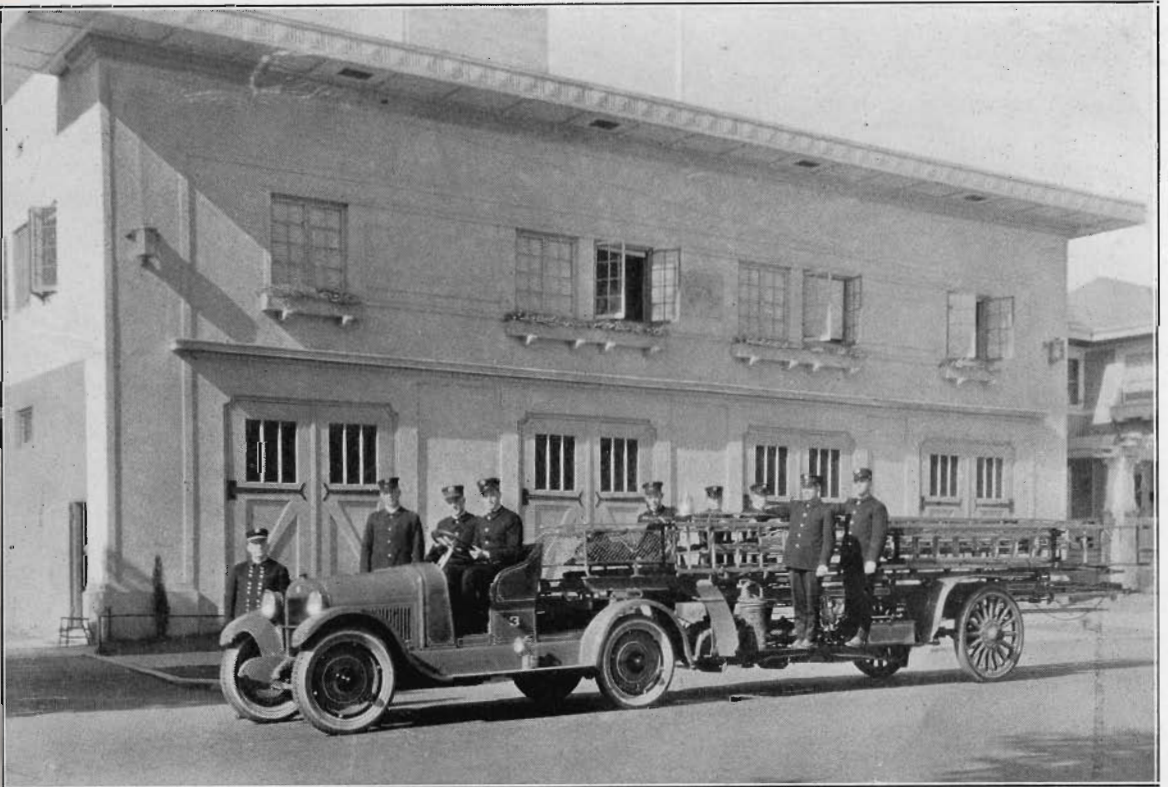
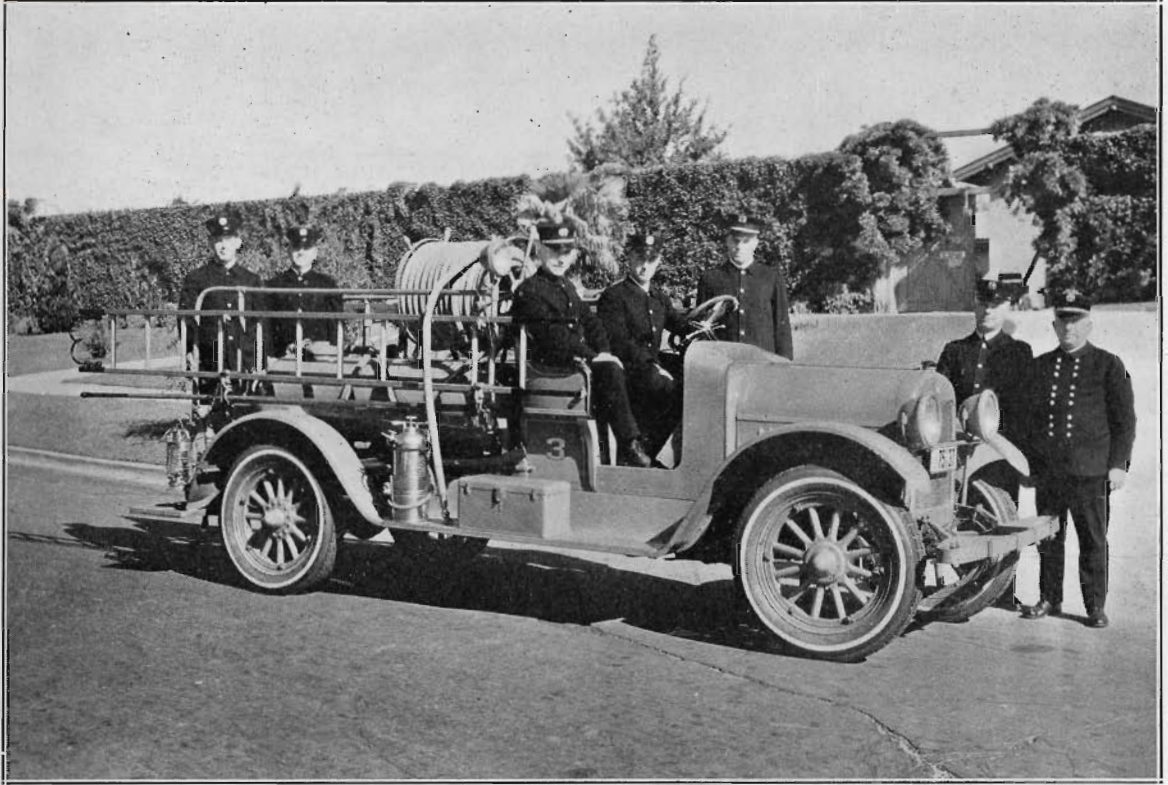
W. J. Hollingsworth
R. Trengove
J. L. Guth
S. W. Butler
G. N. Williams
Robert Hunt
J. E. Gorman
H. A. Guthrie
R. N. Nichols
C. D. Pritchard

In Memoriam

By Thomas Temple Hoyne

It takes courage to die 'mid the pomp of war,
In spite of comrades' cheers;
Though the soul's aflame with a glorious cause
It is hard to smother fears,
But to meet death in a fight for breath
Ground out beneath brick and stone,
With no thought of fear, though no help is near
No answer to groan but groan
Takes men so rare they're beyond compare
Save to God Almighty alone.

As published in the Evening American, Tuesday, April 22, 1924.



Above Equipment Supplied by the Reo Motor Car Co. of California