

Established 1904 — Our 52nd Year



A Beautiful Tribute!



- Cemetery
- Crematory
- Mausoleum
- Columbarium

Serving every
creed and faith.
Permanently en-
dowed

East Lawn

Folsom Boulevard at 43rd

Tel. GLadstone 5-3033



LEAVITT THE CHAIN SAW MAN

DISTRIBUTORS FOR

McCULLOCH WORLD'S LARGEST BUILDERS OF

● CHAIN SAWS

● POWER LAWN MOWERS

FOR SALES and SERVICE

LEAVITT POWER TOOL CO.

2305 J Street

Tel. Gilbert 2-3469

CHEMICALSCOMPOUNDING
TO
SPECIFICATIONSDOMESTIC
SOAPS
and
DETERGENTS**MANUFACTURERS OF CLEANING & SANITARY MATERIALS**Swimming Pool Sanitizers — Sweeping Compounds
Insecticides — Disinfectants — Floor Waxes
Automotive — Dairy and Beverage Cleaners

640 Harbor Blvd.

(West Sacramento)

Gilbert 3-8584

CLEANERS AND DYERS

VISITORS ALWAYS WELCOME AT OUR PLANT

**Swanson's
CLEANERS**

VISIT ONE OF OUR CONVENIENT STORES OR PHONE US

Eight Locations
for
Your Convenience**Gilbert 2-3649**Route Men
to
Serve YouNO EXTRA
COST**RETEXTURIZING FREE**NO EXTRA
COST42nd & H Sts.
3224 Riverside Blvd.
817 Grand Ave.—Del Paso HeightsMain Plant and Store: 2900 J Street
2614 Ell Camino4528 Freeport Blvd.
5665 Stockton Blvd.
5493e Carlson Dr.—River Park

NORTH STAR

LYLE WATTS — EVANS WATTS

E
N
T
E
R
T
A
I
N
M
E
N
T

DINING



DANCING



COCKTAILS

P
I
A
N
O

B
A
R

2003 Del Paso Blvd.

(North Sacramento)

WAbash 5-9950

CASHIERS! TELLERS!

— CLERKS! —

Do your employers furnish you with
the latest edition of the City Directory?

You need it at your elbow at all times, to protect your company from forgers and bad-check artists. A few questions, checked against City Directory information, will trip them at once. Intelligent use of the City Directory for this purpose has saved thousands of dollars and helped make some cities "too sharp" for bad-check "operators."

COLLECTIONS
COMMERCIAL, RETAIL & PROFESSIONAL
COAST TO COAST

NO COLLECTION — NO CHARGE

**THE NATIONAL
MERCANTILE AGENCY**

4th FLOOR — NICOLAUS BLDG.

1020 - 8th St., Bet. J & K

Dial **Gilbert 3-3704**

ESTABLISHED 1910

46 Years Continuous Service

Owned & Operated By

R. J. & E. D. BULLOCK

Chamber of Commerce - Member 40 Years

Licensed by and Bonded to the State of California

CAPITAL CREDIT & ADJUSTMENT BUREAU



RETAIL — PROFESSIONAL — COMMERCIAL

You Pay Us Nothing, If We Do Not Collect

ASSOCIATE OFFICES COVER THE NATION

Member of the Greater Sacramento
Chamber of Commerce and Member of
the Greater North Area of Sacramento
County Chamber of Commerce.

BONDED TO THE STATE OF CALIFORNIA
AND BONDED BY THE AMERICAN COLLECTORS
ASSOCIATION

622 EYE STREET

Gilbert 3-4638

P.O. BOX 1524, SACRAMENTO

CALIFORNIA ADJUSTMENT SERVICE COLLECTIONS

Licensed by and Bonded to the State of California
Nation-wide Service

TEL. HUDSON 4-9154

JOHN J. STEEN, Owner and Operator

606 EYE, Opposite Court House

SACRAMENTO

MERCHANTS SERVICE BUREAU OF SACRAMENTO

If your claim is in Sacramento or surrounding
territory, take advantage of our experience
in—"getting the money"—Commercial—Professional

2100 EYE ST.

TELS. HUDSON 4-2362
Gilbert 3-1874

SACRAMENTO COLLECTION SERVICE, INC.

LICENSED BY and BONDED TO THE STATE OF CALIFORNIA
ASSOCIATE MEMBERS IN ALL CITIES

We Welcome Forwarded Business

Phone Gladstone 6-0060

2022 BROADWAY

SACRAMENTO

CONCRETE — READY MIX

Sacramento Ready Mix Co.

LOUIS JANSEN

READY MIXED CONCRETE — CEMENT

SAND AND GRAVEL

CEMENT CONTRACTORS

POWER INN ROAD AND 14th AVENUE

RT. 2 BOX 2162

TEL. Gladstone 1-2835

CONTRACTORS

TRANSIT MIXED CONCRETE

Concrete Construction
Road Construction
Excavating and Grading



Pile Driving
Black Top Paving
Heavy Contractors'
Equipment Rental
Plant Mix Sales

GRANITE CONSTRUCTION COMPANY

POWER INN ROAD BETWEEN 14th AV. AND FOLSOM

P.O. BOX 156 PERKINS

Tel. Gladstone 1-8471

J. R. REEVES

GENERAL CONTRACTOR



ROAD CONSTRUCTION
Excavating — Grading — Paving



Office, 16th Street at American River Bridge

P. O. BOX 1072

WAbash 5-2707

W H Y A

*Buyers'
 Guide?*

★ *It is customary to include a Buyers' Guide in the City Directory because:*

It gives business firms the opportunity to elaborate upon a description of their products and services impossible in the limited space of regular Alphabetical and Classified listings.



The Buyers' Guide is a necessary supplement to the regular listings; it is good City Directory information . . . **EXTENDED**

RETAILERS CREDIT ASSOCIATION OF SACRAMENTO

(Member Owned)

OFFICIAL SACRAMENTO OFFICE
ASSOCIATED CREDIT BUREAUS
OF AMERICA

RENDERING COMPLETE CONSUMER
CREDIT SERVICE FOR RETAIL, FINANCIAL
AND PROFESSIONAL OFFICES

- RCA CREDIT REPORTS
- RCA INSURED CREDIT REPORTS
- RCA CONSOLIDATED CREDIT SERVICES
- RCA REGULAR CONSUMER COLLECTIONS
- RCA RECEIVABLES CASH ADVANCE PLANS

Offices:

J Street at 18th

Service Office
3108 Fulton Ave.

Gilbert 3-6811

Since 1912

Wholesalers' Credit Association of Sacramento



DISPLAYING THIS INSIGNIA, MEANS YOU ARE
A MEMBER OF AN ASSOCIATION DEDICATED
TO SERVING YOU, THE WHOLESALER

A MEMBER OWNED ASSOCIATION ON THE WHOLESALE AND
MANUFACTURING LEVEL OPERATING UNDER THE FOLLOWING OBJECTS:

- TO EXCHANGE INFORMATION AS TO
THE CREDIT, MANNER OF PAYMENT
AND CHARACTER OF MERCHANTS.
- TO CORRECT TRADE ABUSES AND
GUARD AGAINST UNJUST
EXACTIONS.
- TO HELP REMOVE CAUSES THAT LEAD
TO FINANCIAL FAILURE.
- AVOIDING LEGAL EXPENSES AND
DELAYS WHEREVER POSSIBLE.
- TO ASSIST IN EVERY WAY, HONEST
WELL-MEANING DEBTORS, AND TO
AVOID ALL OTHERS.

- OTHER DIVISIONS _____

Business Management Wholesalers' Credit Finance Co.

(Factors of Accounts Receivables)

CALIFORNIA FRUIT BLDG.
4th & JAY STS. - SUITE 214
SACRAMENTO, CALIF.

MAIL
P.O. BOX 270
Gilbert 3-1725

CRYSTAL DAIRY FOODS



really farm fresh!

Homogenized Milk • Butter

Golden Guernsey Premium Milk

Cottage Cheese • Chocolate Drink • Buttermilk

Ice Cream • Slim • Cream

At Your Favorite Grocer or Market
For Home Delivery Phone Gilbert 3-3911

CRYSTAL DAIRY FOODS consistently win more
Gold Medals than any other Sacramento Valley dairy.

CRYSTAL CREAM & BUTTER COMPANY
1013 D Street Sacramento





Borden's

CAPITAL DAIRY CO.

A Sacramento Institution for Over 100 Years



TOP QUALITY DAIRY PRODUCTS

GAIL BORDEN SIGNATURE QUALITY MILK ● HOMOGENIZED MILK
 PASTEURIZED MILK ● NON-FAT MILK ● CHURNED BUTTER MILK
 ● DUTCH CHOCOLATE DRINK

FINE ICE CREAMS — COTTAGE CHEESE

CREAM ● HALF & HALF ● BUTTER

AT YOUR DEALERS OR PHONE Gilbert 2-3851

CALIFORNIA'S FAVORITE DAIRY FOODS



DIVISION OF FOREMOST DAIRIES INC.

At Your Store on your Door

Call

Gilbert 2-4961

214 19th Street

SACRAMENTO



HOME MILK & ICE CREAM CO.

MAKERS OF "HOME" ICE CREAM
QUALITY PASTEURIZED DAIRY PRODUCTS

1700 21st COR. "Q"

Gilbert 3-4821

Who Sells It? ..



Consult The
Classified Business Lists
of This Directory for Your
Quickest, Surest Answer!

SHOP AT SEARS and SAVE



SEARS, ROEBUCK AND CO.

1123 K Street, Sacramento

Tel. Hudson 4-6961

After February 1, 1957 - 1601 Arden Way



choose your diamond with care...

Whether it be the Brilliant, the Marquise, the Emerald or the Square cut . . . set in White Gold, Yellow Gold or Platinum, you can always buy the finest with confidence from
Edw. A. Grebitus & Son, Reg. Jewelers, Amer. Gem Soc.

Sacramento
1108 Jay St.
Gilbert 2-9081

Town & Country
Village
IVanhoe 7-7853

Grebitus & SON
JEWELERS ~ SILVERSMITHS

DISPLAY MATERIALS

THOMPSON DISPLAY SERVICE

DISPLAYS and DISPLAY MATERIALS
for

Stores — Special Showings — Parties — Clubs
All-Season Displays

CUSTOM - DESIGNERS and CREATORS
ARTIFICIAL FLOWERS and DECORATIONS

810½ J Street

Gilbert 3-4970

P. O. Box 2421 - Sacramento 14, Calif.

ELECTRICAL

FACTORY AUTHORIZED APPLIANCE REPAIRING

We Repair Everything Electrical

TOASTERS — IRONS — MIXERS

WAFFLE IRONS — COFFEE MAKERS — VACUUM CLEANERS, ETC.

COMPLETE SERVICE HOME LAUNDRY EQUIPMENT

FACTORY TRAINED MEN — LARGE STOCK PARTS



TWO SHOPS TO SERVE YOU

1415 21st STREET
SACRAMENTO
TEL. Gilbert 3-5711

3417 EL CAMINO AVE.
COUNTRY CLUB CENTRE
TEL. IVanhoe 9-3710

WARREN ELECTRIC CO.

Licensed Electrical Contractors

ELECTRICAL CONTRACTORS

Commercial

Residential

Industrial

5948 FREEPORT BLVD.

2407 WEST CAPITOL AVE. WEST SACRAMENTO

TEL. GLadstone 7-1317

TEL. Gilbert 1-5414

WISMER & BECKER ELECTRICAL CONTRACTORS

Commercial — Industrial — Offices



ELECTRIC — MOTORS and CONTROL

Westinghouse Industrial Agents

MOTOR REPAIR SHOP (ELECTRIC)

Authorized Field Service Shop — Lincoln Welders

NIGHTS OR HOLIDAYS CALL — GLadstone 6-1235

WABash 5-1147 or IVanhoe 7-5304



Licensed Electrical Engineers

1731 S. Street

Phone HUDson 4-8281

Sacramento



PRESTON ELECTRIC CO.



FOR PROMPT SERVICE

RESIDENTIAL & COMMERCIAL

Installations & Repairs



1310 DEL PASO BLVD.

(NORTH SACRAMENTO)

WAbash 5-0484

RELIABLE ELEVATOR & ELECTRIC WORKS

Electric Shop

SERVING SACRAMENTO OVER 35 YEARS

W. E. COTTER ● H. R. COTTER ● H. F. SCHETTER
Commercial — Residential — Industrial

1914 N STREET

Gilbert 2-7923

EMPLOYMENT AGENCIES

NO CHARGE TO EMPLOYER

Owl Employment Agency

TWO OFFICES TO SERVE YOU

HOTEL — RESTAURANT — DOMESTIC — COMMERCIAL

407 J STREET — SACRAMENTO

109 W. EL CAMINO AVE. — NORTH SACRAMENTO

HUDSON 1-0445

WAbash 2-2648

Call Collect

We Make The Preliminary Selection — You Make The Final Choice

FLOORS

POPOFF'S

Flooring and Finishing

Materials For All Types Floors

HARDWOOD — LINOLEUM — RUG and CARPETS

ASPHALT and VINYL TILES

1978 FULTON AVE.

IVanhoe 9-0444

ANDREWS & GREILICH

FUNERAL DIRECTORS

Mission - Chapel



Modern Beautifully Furnished Chapel

Lady In Attendance

ELSIE L. GREILICH — ALBERT F. GREILICH

Cor. 28th and W Streets

Dial Gladstone 6-3987

CIPPA & NICOLETTI

A. J. NICOLETTI, Prop.

FUNERAL HOME

RENDERING A DIGNIFIED SERVICE

IN TIME OF NEED

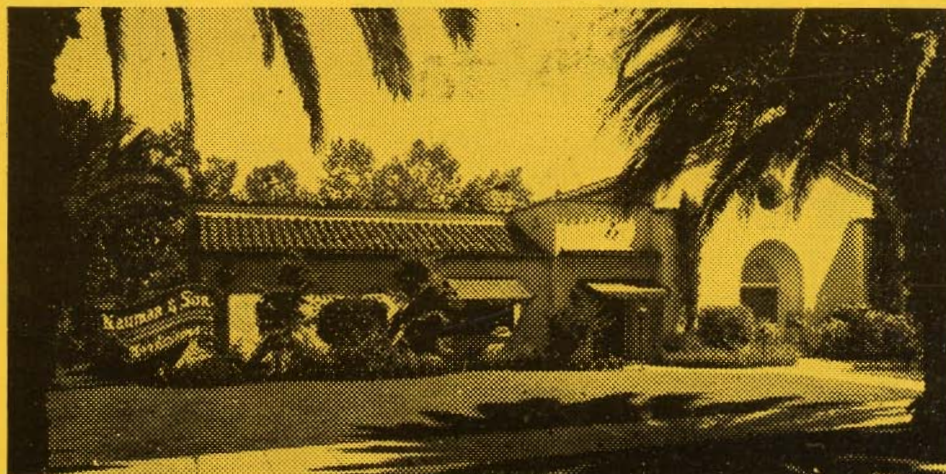
Lady Attendant

1501 28th Street

Phone Gladstone 6-5478

SACRAMENTO

HARRY A. NAUMAN & SON



Funeral Directors

2021 28TH ST.

SACRAMENTO

PHONE Gladstone 6-3827

Gladstone 5-8260

C. F. Derr

DERR'S

Gutters

Jobbing

SHEET METAL

HEATING — VENTILATING — AIR CONDITIONING

4909 Franklin Blvd.

FURNITURE

GRAY'SFurniture — Appliances — Propane Gas
LOW OVERHEAD PRICESGeneral Electric
O'Keefe & Merritt
Float-N-EzAmerican Wood
Berkline
MengelNorge
Simmons
Sealy

BANK TERMS — OPEN MON., TUES., THURS., FRI. TILL 9 PM

6042 Stockton Blvd.
1/2 Mi. South of Fruitridge Rd.
Gladstone 6-96631623 West Capitol Ave., West Sacramento
(Two Locations) 1 Mi. West of Tower Bridge
To Serve You Gilbert 2-0716**OUT OF SIGHT! OUT OF MIND!
OUT OF BUSINESS! . . .**

● The importance of keeping firm and product names in the public eye is recognized by all business men. It is astonishing to see how a firm or product, however meritorious, will slip into the limbo of the forgotten if not persistently advertised.

The City Directory is the natural medium for keeping a business or product name in the spotlight. *Insist on being well represented in its pages.*

PACIFIC GAS and ELECTRIC COMPANY

Natural Gas—Light and Power

TO
INDUSTRY — AGRICULTURE — COMMERCE
HOMES

Division Office—1100 K St., Sacramento
Telephone Gilbert 2-7831

The Pacific Gas and Electric Co. serves natural gas only in City of Sacramento and vicinity, and combined gas and electric service in Folsom, West Sacramento, Bryte and vicinity.

PAY STATIONS AND SUB AGENTS

Sacramento Area

BRODERICK (Gas and Elec.)

Beale's 5-10-15c Store
3rd and D Streets

BRYTE (Gas and Elec.)

Bryte-Way Market
Solano and Lisbon Aves.

CARMICHAEL (Gas Only)

Carmichael Supply Co.
Fair Oaks Blvd. and Palm Ave.

DEL PASO HEIGHTS (Gas Only)

Grant Union 5 and 10
3742 Rio Linda Blvd.

ELK GROVE* (Gas Only)

Rural Electric Company

FOLSOM* (Gas and Elec.)

Rumsey's

GALT (Gas Only)

Lincoln Way Variety
227 Lincoln Way

NORTH HIGHLANDS

Highland Hardware 5636 Watt Ave.

NORTH SACRAMENTO (Gas Only)

Swart Hardware* 1927 Del Paso Blvd.
Zephyr Gift Shop 3208 Marysville Road

RIO LINDA (Gas Only)

Gross Variety 7th & M

SACRAMENTO (Gas Only)

Berry's Pharmacy 35th & Broadway
Boulevard Pharmacy 2030 H St.
Capra Pharmacy 3230 Folsom Blvd.
College Hardware 2760 21st St.
Colonial Pharmacy 3608 Stockton Blvd.
Fruitridge Hardware 5651 Stockton Blvd.
Gift Nook 964 39th St.
Petersons' 5 & 10 2996 65th St.
P. G. & E. Office 1314 29th St.
South Sacramento Pharmacy 4720 Franklin Blvd.
Stop-N-Shop 3200 Riverside Blvd.

SACRAMENTO SUBURBAN (Gas Only)

Arden Variety 3511 La Brea Way
Town & Country
Village Pay Station 2638 El Paseo Lane

WEST SACRAMENTO (Gas and Elec.)

Jefferson Blvd. Pay Station 834 Jefferson Blvd.

*Orders also accepted at these stations