

Sacramento Directory Co's

Classified Business Directory

1911

Names appearing under headings marked (*) are inserted only by special contract.

*** Abdominal Supporters**
KENISTON & ROOT 706½ K (See Physicians)

Abstracts of Title

Buckley-Gerber Abstract & Title Co
 912 6th

PIERCE-BOSQUIT ABSTRACT & TITLE CO 827 7th (See book mark)

SACRAMENTO ABSTRACT & TITLE CO 701 I (See adv)

*** Academies and Schools**
 (See also Colleges and Schools)
CHRISTIAN BROTHERS COLLEGE K sw cor 12th (See bottom lines and Colleges)

ST JOSEPH'S CONVENT AND ACADEMY (Kindergarten Primary and Grammar in Connection) G bet 8th and 9th

Accountants

McLAREN GOODE & CO 519 Calif San Francisco

MASLIN PRENTISS 5 Sac Bank Bldg

ROWE C V 268 Market San Francisco

WALKER & COOPER (Certified)
 255 California San Francisco

*** Accountants—Certified Public**
BRACE HERBERT M Chronicle Bldg San Francisco

GREENHOOD & JANSEN 405-11 Clunie Bldg 519 Calif San Francisco

*** Acreage**

FOSTER W T CO 35th cor Cypress (See top lines and Real Est)

GARLOUGH REALTY CO 613 J (See top lines)

HICKMAN-COLEMAN CO 724 J (See top lines)

JOHNS FRED J CO THE 1023 9th (See center lines and Real Est)

STEUDE P H 1011 7th (See side lines and Real Est)

UNITED STATES BOND & MORTGAGE CO 430 J (See front cover center lines and p 4)

Adding Machines

BURROUGHS ADDING MACHINE CO 1112 8th

Dalton Adding Machine Co 529 J

*** Adjustment Companies**
HENRY'S LAW & COLLECTION CO 606 I (See top and bottom ends)

H. M. LaRue, Jr., Pres.

John R. LaRue, Sec.-Treas.

Sacramento Abstract & Title Co., Inc.

701 I St.

Records Searched and Abstracts
 of Title Made

**W. A. MACKINDER
GENERAL AUCTIONEER**

1027 K St. Phone 3839 R 25 Years' Experience



SPERRY FLOUR CO.
Manufacturers of Pioneer Flour
CEREALS A SPECIALTY

834

SACRAMENTO DIRECTORY CO'S

Sacramento

1911

ADJUSTMENT COMPANIES—Continued
MADSEN A J 1014a 7th (See front cover and Collection Agts)
SACRAMENTO COLLECTING CO 1014a 7th (See front cover and Collection Agts)
VALLEY ADJUSTMENT CO 409 Ochsner Bldg (See side lines)

Advertising Agents
BLUM'S ADVERTISING AGENCY
 Newspaper Magazine and Outdoor Advertising Specializing in Systematic House-to-House Distributing and Sign Tacking Throughout the Entire State Circulars Booklets and Catalogues Written and Designed 1117 J Tel M 1867 Main Office Williams Bldg 693 Mission San Francisco
CASWELL CO 413 J (See top lines)
COMMERCIAL PUBLICITY ADVERTISING CO 422 Ochsner Bldg

Art Bulletins - Signs - Bill Posters - Distributors - "Ad" Designers.
Ely Advertising Co., Inc.
 620 L ST.

(See center lines)
LONGHURST H G 617 J
 Morshead J W 610 K
 Sac Ad Service 229 Ochsner bldg
 Van Buren Adv Co 930 K

*** Advertising Distributors**
BLUM'S ADVERTISING AGENCY
 We furnish the Most Systematic and Reliable House-to-House Distributing and Sign Tacking Service on the Pacific Coast Our Agency has the Hearty Indorsement of about 85 per cent of the Merchants of San Francisco and Oakland who do Distributing and the largest per centage of Eastern Advertisers We always MAKE GOOD Ask for PROOFS 1117 J Tel M 1867 Main Office Williams Bldg 693 Mission San Francisco

*** Advertising Novelties and Specialties**
BLUM'S ADVERTISING AGENCY
 1117 J Main Office 693 Mission San Francisco
BRACE H G & CO 706½ K
LARKIN J N & SON 307 J (See side lines)
 Madden John 2331 L

Agricultural Implements
 (See also Machinery)
JOHN DEERE PLOW CO 221-25 J (See center lines)
 Sacramento Implement Co 721 J
 Souney Bros 2109 P

*** Alfalfa Lands**
BROOKE REALTY CO INC 618 J (See back cover and Real Est)
HICKMAN-COLEMAN CO 724 J (See top lines)
STUDE P H 1011 7th (See side lines and Real Est)
UNITED STATES BOND & MORTGAGE CO 430 J (See front cover center lines and p 4)

Ammunition
 See Sporting Goods

Apartment Houses
 See Furnished Rooms Etc

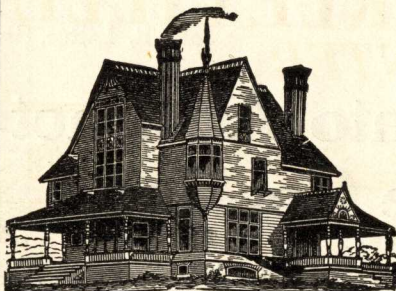
*** Appraisers of Estates**
GARLOUGH REALTY CO 613 J (See top lines)
JOHNS FRED J CO THE 1023 9th (See center lines and Real Est)

Architects
ROBERTS I T CO INC 1008 8th (See bottom lines)
WILLONER ALEX 1006 4th (See adv)

CASEY & DALTON

W O G C R D

Prescription Specialists
 530 J cor. 6th



A. Willoner

Designer of

Artistic Homes

Res dence, 1102 22d Street
 Phone Main 3934 R

Office, 1006 4th Street
 Phone 2941

Sacramento, California

\$ 2 HATTERS HATS
 LUXE DE 1007 3d

Architects—Certified

(See also Designers)

CAMPBELL A W J cor 34th
CUFF & DIGGS 27 Elks Bldg
 Dickey C W 926 6th
 Hemmings Chas 1005 K
 Herold R A 503 Bryte bldg
 Narbett J T 517 Ochsner bldg
 Schardin F H 610 K
 Seadler & Hoen 610 K
SELLON G C 5th Fl Physicians Bldg
 Wolfe C J 22 Stoll bldg

* Architectural Iron Work

MARTIN G W & SONS 1217 19th
 (See top lines and p 11)

Art Glass

Bowen W J 1508 2d

Art Goods

Hinkson & McClatchy 1021 6th
 McDowell & Harding 726 K

Artists

Crouch Mary C 1406 H
 Fay Mrs Nellie 800 O
 Herrick Mrs K P 2022 W
 Isaacs Ida 2708 M
 Jackson W F Crocker Art Gallery
 Landy Emos 1526 3d
 Sac Art Co 426½ J
 Wilder I F 530 K
 Woods D H 3931 Cypress
 Yoerk Carrie R 1413 H

* Artists—Commercial

CASWELL CO 413 J (See top lines)

Art Bulletins - Signs - Bill Posters - Distributors - "Ad" Designers

Ely Advertising Co., Inc.
 620 L ST.

(See center lines)

* Asphalt Paving

CLARK & HENERY CONSTRUCTION CO 512-16 Ochsner Bldg
 (See center lines)

Assayers

BEER S GOLD MILL & EXTRACTION CO INC Oak av Rear Golden Eagle Hotel (See bottom lines)

Assylums

See Hospitals

Attorneys-at-Law

See Lawyers

Auctioneers

MACKINDER W A 1027 K (See side lines)
 Sherburn W H 1006 4th
 Simmons D J 1009 J

* Automobile Chauffeurs and Mechanics
MOORE & MUSACCHIA 1307 J

* Automobile Engineering Schools
MOORE & MUSACCHIA 1307 J

* Automobile Garages

BRADLEY W H & SONS 1015 11th (See side lines)
PULLMAN AUTOMOBILE CO 1307 J (See front cover)
SUPERIOR GARAGE 1209-15 J (See p 15)

Automobile Liveries

BRADLEY'S AUTO LIVERY 1015 11th (See side lines)
 Cooksey W J 601 K
 Lindberg W S K nr 7th

Automobile Manufacturers

A Auto Mnfg Co 1112 10th

* Automobile Painters

ALBRIGHT BROS 1112-14 24th (See side lines)
CHARLEVILLE R F Rear 2019 O (See bottom lines and adv)

W. A. McCland Co. Real Estate
220 J ST. W. A. McCland Co.

WE GET THE MONEY
 AND SO DO YOU

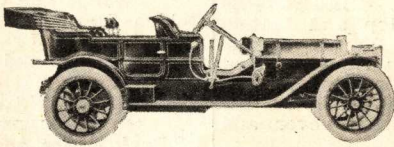
Valley Adjustment Co.

COLLECTIONS EVERYWHERE

409 Ochsner Bldg.
H. A. BARNES
 MANAGER

R. F. CHARLEVILLE PAINTER

Automobile



Carriage

REAR 2019 O ST.

Tel. Main 1845 R

AUTO & CARRIAGE R. F. CHARLEVILLE

PAINTER Rear 2019 O - Tel. Main 1845 R

CAPITAL

FISH

CO.
WHOLESALEAND
RETAIL

1117 3d

Tel. M 695

PARK

SUBURBAN AND FARM PROPERTY

OUR SPECIALTY

35TH COR. CYPRESS AV.

836

SACRAMENTO DIRECTORY CO'S

1911

* Automobile Repairers

MEISTER A & SONS CO INC 9th
cor DMOORE & MUSACCHIA 1307 J
REEDER W M & CO Rear 1116 I
SUPERIOR GARAGE 1209-15 J
(See p 15)

WELCH E N Rear 1011 O

* Automobile Spring Mnfrs

SUPERIOR GARAGE 1209-15 J
(See p 15)

Automobile Sundries and Supplies

Ritchie & Heriot 1030 J
STUDEBAKER BROS CO 800 L
(See center lines)

* Automobile Tire Vulcanizing

MEISTER A & SONS CO INC 9th
cor D
SUPERIOR GARAGE 1209-15 J
(See p 15)

Automobiles

Arnold Bros 1212 J
BRADLEY W H & SONS 1015 11th
(See side lines)Corbin Automobile Agency 1916 M
Jeffery Thos B Co 1611 M
Kiessig H R 1926 6th
Kitt F T 1910 MMannix & King 711 L
MEISTER A & SONS CO INC 9th
cor DOppenheim Emanuel 2001 M
Phillips S M & Co 1611 M
PULLMAN AUTOMOBILE CO 1307
J (See front cover)Skinner & Elliott 1217 K
STUDEBAKER BROS CO 800 L
(See center lines)

Tryon E H 911 10th

* Awnings

(See also Tents and Awnings)
SACRAMENTO TENT & AWNING
CO 1009 10th (See top lines)

* Babbitt Metal and Solder

PACIFIC METAL WORKS 153 1st
San Francisco

* Bad Debt Collectors

HENRY'S LAW & COLLECTION
CO 606 I (See top and bottom
ends)MADSEN A J 1014a 7th (See front
cover and Collection Agts)SACRAMENTO COLLECTING CO
1014a 7th (See front cover and
Collection Agts)VALLEY ADJUSTMENT CO 409
Oschner Bldg (See side lines)

* Baggage Transfer

GLOBE TRANSFER VAN &
STORAGE CO 704 J (See side
lines and Transfer)MERCHANTS SPECIAL DELIV-
ERY & TRANSFER CO 1115 5th
(See center lines)

* Bags—Canvas

SACRAMENTO TENT & AWNING
CO 1009 10th (See top lines)

Bakers

(See also Confectioners)

Anderson & Oakes 17th cor Y
Barton-Stirn Co 1012 J
Binse Albert Broderick
Born Bros 1015 28th
Gemsch Mrs Regina 1401 G
Grotsch & Schaefer 915 K
Hasert Emil 1236 J
Jones T R 1225 16th
Kaeser R G 3210 4th av 2233 P and
3329 MagnoliaKent M F & Sons 1315 3d
Krieger & Hofman 523 K
Metz Geo 2300 PNoceti & Weitmann 1221 J
Nuding E K 3322 SactoPeterson P J 2430 17th
Renon Co 1219 8thRice Bros 1014 9th
Roma Bakery 1121 3dSchnetz H & Co 124 J
Senn Ernest 1531 4thSollers Mrs L A 1516 M
Weitman W K 903 UZangerle Mrs Louise 722 J
Showers Silas Folsom

* Balusters

BANTA A J Rear 314 10th (See
back cover and p 11)SACRAMENTO PLANING MILL &
FURNITURE CO 3d cor V (See
top lines and p 9)SUTER-HEVENER MILL & MNFG
CO 2d cor T (See bottom lines
and p 10)

* Band Sawing

SACRAMENTO BUILDERS SUP-
PLY CO 1311-15 J (See side lines)

Bands and Orchestras

Golden Star Band and String Or-
chestra 1118 JGreer's Band and Orchestra 1011
15th

Noack's Orchestra 704 K

* Bank Office and Bar Fixtures

BANTA A J Rear 314 10th (See
back cover and p 11)

FANCY STATIONERY

COMMERCIAL STATIONERY

WAHL STATIONERY CO.

PHONE M 373

923 K ST.

OFFICE SUPPLIES

SCHOOL BOOKS

American
Production
CO.1225 4TH
MAIN 990

GROCERS

Hotel, Restaurant
and Family Trade
a Specialty



BURNETT & SONS R and 24th
(See p 10)
SACRAMENTO PLANING MILL & FURNITURE CO 3d cor V (See top lines and p 9)
SUTER-HEVENER MILL & MNFG CO 2d cor T (See bottom lines and p 10)

Banks and Bankers

CALIFORNIA NATIONAL BANK
J nw cor 4th (See back cover)
CAPITAL BANKING & TRUST CO
700 J
Citizens Bank of Oak Park 2927
35th
FORT SUTTER NATL BANK 7th
sw cor J (See p 2)
Guaranty Trust & Savings Bank
330 J
NATIONAL BANK OF D O MILLS & CO 201 J (See inside back cover)
NIPPON BANK 1203 3d
PEOPLE'S SAVINGS BANK J cor
8th (See p 3)
SACRAMENTO BANK 431 J
Sacramento Valley Trust Co 1017
8th
Bank of Elk Grove Elk Grove
Fair Oaks Bank Fair Oaks
Brown Alex Walnut Grove

*** Bar Fixtures**

BANTA A J Rear 314 10th (See back cover and p 11)
BURNETT & SONS R and 24th
(See p 10)
SACRAMENTO PLANING MILL & FURNITURE CO 3d cor V (See top lines and p 9)
SUTER-HEVENER MILL & MNFG CO 2d cor T (See bottom lines and p 10)

*** Bar and Structural Iron and Steel**
JUDSON MNFG CO 819-23 Folsom
San Francisco

Barbers

Adams Antonio 829 2d
Barbaria Frank 1205 9th
Beardsley & Graham 527 12th
Berlinger A J 1027 10th
Bernard Costa 1929 Q
Blakly G W 2930 35th
Bonini Ferruccio 116 I
Butler F J 1114 7th
Cangelosi Ignazio 1228 6th
Clark S C 627 and 217 K
Cobarrubia F L 3321 Sacto
Combs D M 716 K
Cook Thos 2329 I
Cooper F H 1929 J
Coty & Wegele 516 J

Davis F H 1508 25th
Dias J X 1027 2d
Ekelbrett J W 2004 M
Ferrara Frank 630 I
Frederick H W Broderick
Gallagher B J 328 K
Garner & Fink 1108 8th
Glaviano Jos 227 I
Graham R W 1020 6th
Ham Eugene 1119 J
Ham & Monez 1027 6th
Hayes Wm 1120 3d
Held G C 1013 28th
Hoefer W A 818 K
Hughes W A 227 12th
Hunt T F 3504 Cypress
Jennings Leo 825 1/2 2d
Jones C F 1227 28th
Julier Frank 1106 10th
Kanas Thos 1121 2d
Kelly F W 2003 O
La Barba Jos 1204 7th
Lesser Benj 1220 J
Lopez Edw 1328 4th
Lupton C W 3025 35th
McLain A R Hotel Sac
Mann Ray 920 8th
Martin J B 1019 3d
Massmedzu H D 220 1/2 L
Mihis Wm 129 K
Moroni Attilio 928 2d
Moroni Jos 925 3d
Murphy Jas 2229 1/2 10th
Murphy J T 307 K
Nicolosi L L 2914 35th
Paratore Gioachino 1018 4th
Peel J W 923 7th
Philipp Octave 1027 9th
Reichmuth Stephan 2903 24th
Rogers Louis 404 J
Rose W L 1020 5th
Rose & Strawhecker 1022 8th
Royster J W 1827 S
Rubenstein Henry 227 K
Rubenstein Jacob 1025 4th
Santos Bros 1128 J
Santos J S 1006 3d
Sarrett J S 1008 1/2 4th and 806 21st
Sawyer M J 926 1/2 J
Schroeder V F 816 J
Silva A F 828 1/2 2d
Silva M J 35th cor Park
Silveira J S 507 12th
Smith A W 1307 18th
Valine Bros 302 K
Velardi Antony 1428 2d
Walker A J 923 2d
Walter Peter 1603 J
Waters Frank 1111 5th
White J B 1008 7th
Whittaker J E 1009 8th
Williams Henry 1624 11th
Williams T W 2006 M
Wilson Abraham 1015 K
Wilson O H 405 K

**SPORTING
GARMENTS**

SUCH AS
**AUTOMOBILE
GOLF
TENNIS and
NORFOLK
COATS
RIDING
BREECHES**

PHONE M 350

Strahl
907 K STREET

F. H. COFFMAN

Pianos Repolished and Cabinet Work in All Branches

Interior Painting and
Hardwood Finishing

ALL KINDS OF FURNITURE REPAIRED AND REFINISHED

1225 SIXTH STREET--OLD PAVILION

STORE, BANK AND BAR FIXTURES

ICE CHESTS, GENERAL MILL WORK

SUTER-HEVENER MILL & MFG. CO.

2D COR. T

TEL. M 663



**Real Estate
Insurance
Mortgage
Loans
Investments
Business
Chances
Rentals
Collections**

**1112 8th St.
MAIN 2270 R**

**W. J.
Frazer**

**General
Contractor**

.. AND ..

BUILDER

Mont Clair Av.

EAST

SACRAMENTO

Tel. M 3689 R

ENGINEERS

Dealers in Oil Burners and Oil Burning Plants of Every Description

HYDRO CARBON LAMPS

838

SACRAMENTO DIRECTORY CO'S

1911

Barbers' Supplies

Deckelman C & E 422 J

*** Barley Mills**

SPERRY FLOUR CO 12th cor C
(See top lines)

Baths

(See also Barbers)

Huck Mrs L M 711 Oak av
Sacto Riverside Bath and Park Co
Riverside rd nr S P crossing
SUNRISE BATHS 1123 1/2 3d (See
p 21)
Whitaker F H 807 J

*** Batteries Recharged**

SUPERIOR GARAGE 1209-15 J
(See p 15)

*** Berry Baskets**

CAPITAL BOX FACTORY 2d cor Q
(See backbone)

Bicycles and Bicycle Supplies

Banta Mrs Laura 825 J
Harrison W H Jr 1109 J
Jones F M 1013 9th
LANGLEY W A 1025 10th (See side
lines)
Taylor E J 3409 Park

*** Bill Boards**

CASWELL CO 413 J (See top lines)

Art Bulletins - Signs - Bill Posters - Distributors - "Ad" Designers
Ely Advertising Co., Inc.
620 L ST.

(See center lines)

Bill Posters

CASWELL CO 413 J (See top lines)

Art Bulletins - Signs - Bill Posters - Distributors - "Ad" Designers
Ely Advertising Co., Inc.
620 L ST.

(See center lines)

Billiard Tables and Supplies

Wilhelm O A 2501 I

Billiards and Pool

Glas P J 1014 1/2 7th
Honda Y 1220 3d
Stencel A L 1123 5th
Treuke Gustave 516 J
Vlahos Nicholas 930 1/2 2d
Wallner Aug 2001 J

Bit and Spur Mnfrs

Gutierrez & Dake rear 925 O

Blacksmiths

(See also Horseshoers also Carriage
and Wagon Makers)

ALBRIGHT BROS 1112-14 24th
(See side lines)

Carter E L 3406 Sacto

Childs J R & Co 1014 17th

Conley Chas Riverside rd 8 s Sut-
terville rd

Crawford Robt 2614 34th

Davis L B Upper Stkn rd cor Vine

Gostick A H 3326 Sacto

Kennedy T M 2215 28th

McKay J J 1416 21st

McNamer E H 215 Upper Stkn rd

Meehan J J 909 12th

Melvin H G 418 I

Mueller Max M nr Wolf

Ott C S 1727 14th

Pope & Cordero 2201 N

Rickard S T Broderick

ROGERS & d'ARTENAY MNFG

CO 1800 R (See side lines)

Sac Steam Forge and Blacksmith-

ing Shop 115 O

Seitz J P & Son 1216 30th

Shevlin & Stearns 1209 6th

Shumate D L & Son 2717 Lower

Stkn rd

Talbot L C M nr Cherry

Wiezel John Jr 917 4th

Woods J A 715 S

Whitman H C Florin

*** Blacksmiths' Supplies**

WATERHOUSE & LESTER CO
INC 1301-7 Front (See Hard-
ware)

Blank Book Mnfrs and Dealers

(See also Bookbinders)

SACRAMENTO BOOK BINDERY

309 J

SILVIUS & SCHOENBACKLER

423 J

WAHL STATIONERY CO 923 K

(See bottom lines)

Blue Prints

National Blue Print Co 1012 4th

Boarding Houses

See Furnished Rooms Etc

*** Boarding Schools**

**CHRISTIAN BROTHERS COL-
LEGE** K sw cor 12th (See bottom
lines and Colleges)

*** Boarding Stables**

(See also Livery Feed and Sale
Stables)

**TELEGRAPH FEED & LIVERY
STABLES** 1222 J (See Liveries)

Boat Houses

Hutchinson J P Broderick

REAL ESTATE

INSURANCE

RENTS

LOANS

1012 8th St.

Phone Main 1205



A. BONNHEIM,
PRES.

HUGH MAULDIN,
VICE-PRES.

O. H. COPE,
SEC.-MNGR.

Boat Supplies

Koch H A Broderick

Boat and Ship Builders

PANKOST BOAT SUPPLY CO

Broderick

Nunes Bros Front ft Y

SACRAMENTO BOAT CO Brod-
erick

*** Bonds**

HAWK & CARLY CO INC 623 J
(See center lines)

JOHNS FRED J CO THE 1023 9th
(See center lines and Real Est)

**UNITED STATES BOND & MORT-
GAGE CO** 430 J (See front cover
center lines and p 4)

WOOD & TATUM CO 1008 8th (See
backbone and Real Est)

Bookbinders

BRITTON & REY 560-64 Sacto San
Francisco

SACRAMENTO BOOK BINDERY
309 J

SILVIUS & SCHOENBACKLER
423 J

*** Books—Loose Leaf**

SILVIUS & SCHOENBACKLER
423 J

*** Books and Stationery**

(See also Stationers)

WAHL STATIONERY CO 923 K
(See bottom lines)

**WESTERN METHODIST BOOK
CONCERN THE** (Jennings &
Graham Publr) Standard Works
Theology Fiction and Stationery
5-7 City Hall av San Francisco

**Boots and Shoes—Retail
See Shoes**

Bottlers

ARISTO MINERAL WATER &

SYPHON CO 209 J

Schnerr C & Co 1023 Front

Folsom Soda Works Folsom

Bowling Alleys

Terminus Bowling Alley 3021 35th

Box Manufacturers and Dealers

Calif Pine Box & Lbr Co 1317 Front

CAPITAL BOX FACTORY 2d cor
Q (See backbone)

*** Brackets—Wood**

BANTA A J Rear 314 10th (See
back cover and p 11)

BURNETT & SONS R and 24th
(See p 10)

**SACRAMENTO PLANING MILL &
FURNITURE CO** 3d cor V (See
top lines and p 9)

**SUTER-HEVENER MILL & MNFG
CO** 2d cor T (See bottom lines
and p 10)

*** Brass Checks**

SLEEPER H E 1014 4th (See Rub-
ber Stamps)

*** Brazing**

REEDER W M & CO Rear 1116 I

Brewers

Buffalo Brewing Co 21st cor R
Sacramento Brewing Co 12th cor H

Brick Mnfrs and Dealers

**SACRAMENTO SANDSTONE
BRICK CO** 1005 8th (See center
lines and p 8)

SILICA BRICK CO 416 Ochsner
Bldg (See bottom lines and p 12)

*** Brick and Stone Contractors**

(See also Contractors—Brick and
Stone)

MARTIN G W & SONS 1217 19th
(See top lines and p 11)

*** Bridge Contractors**

(See also Contractors—Bridge)

JENKINS & WELLS 36th cor Y
(See p 14)

*** Bridge and Wharf Builders**

**CLARK & HENERY CONSTRU-
TION CO** 512-16 Ochsner Bldg
(See center lines)

ROSS CONSTRUCTION CO 205
Ochsner Bldg

Brokers—Insurance

Thompson C N 1005 7th

Brokers—Merchandise

Wiley & Donnelly Folsom

Brokers—Oil

Sagar-Loomis Co 320 Ochsner bldg

*** Brokers—Real Estate**

BAKER & CARSTENS 2825 35th
(See center lines and Real Est)

BROOKE REALTY CO INC 618 J
(See back cover and Real Est)

HICKMAN-COLEMAN CO 724 J
(See top lines)

JOHNS FRED J CO THE 1023 9th
(See center lines and Real Est)

STEUDE P H 1011 7th (See side
lines and Real Est)

**UNITED STATES BOND & MORT-
GAGE CO** 430 J (See front cover
center lines and p 4)



MOVES

**ANYTHING
TIME
WHERE**

**Piano Moving
.. ON ..
Special Wagon**

GLOBE

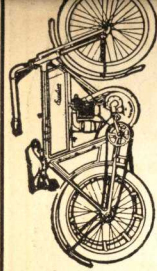
**TRANSFER
VAN &
STORAGE CO.**

**Cash Checks
704 J - Main 729**

Carlaw Bros.
IMPORTERS OF
Scotch and all other Eastern Granites
TENTH AND
R STREETS

H. P. HARDMAN LADIES' TAILOR

ROOMS 1, 2, 3 AND 4, 718 J STREET (UP-STAIRS)



Langley
BICYCLES
UMBRELLAS, KEYS
1025 10th St.



AGENT EXCELSIOR AUTO CYC
PHONE, MAIN 2828 R

STEDWELL & FLEISHER ESTATE LOANS AND INVESTMENTS

704 J St. Phone Main 3456 SACRAMENTO

840 SACRAMENTO DIRECTORY CO'S 1911

Brokers—Stock

Moss & Co 424 J
Walter & Bliven 210 Bryte bldg
Wells J W 706 1/2 K
Williams Geo E Co 420 Ochsner bldg

*** Brooders**

SMITH F F & CO 1006 J (See front cover)

Broom Manufacturers

Columbian Broom Factory 1801 14th

*** Buggies**

STUDEBAKER BROS CO 800 L
(See center lines)

*** Builders' Hardware
(See also Hardware)**

EMIGH HARDWARE CO 1208 J
(See top lines)
OAKLEY PAUL 920 J (See center lines and Hardware)

*** Building Contractors**

(See also Carpenters Etc also Contractors—Building)
FRAZER W J Mont Clair av E Sacto (See side lines and p 14)
MARTIN G W & SONS 1217 19th (See top lines and p 11)
MORRILL F O & SON 2610 I (See bottom lines and p 9)

*** Building Material**

BREUNER JOHN CO 600-608 K
Ione Sandstone Co 532 Ochsner bldg
NATOMAS ROCK DEPT 201-4
Hagelstein Bldg (See top lines and Contrs—Crushed Rock)
SACRAMENTO BUILDERS SUPPLY CO 1311-15 J (See side lines)
SACRAMENTO CEMENT & SUPPLY CO 512-16 Ochsner Bldg (See center lines)
SACRAMENTO SANDSTONE BRICK CO 1005 8th (See center lines and p 8)
SEARS H H 230 Ochsner Bldg
SILICA BRICK CO 416 Ochsner Bldg (See bottom lines and p 12)
Warner E S 1023 10th

*** Building Stone**

CARLAW BROS 10th cor R (See side lines and Marble Works)

Building and Loan Associations
SACRAMENTO BUILDING & LOAN ASSN 724 J

*** Burners—Oil**

THOMAS E W OIL BURNER CO
300-1 Elks Bldg Stockton (See side lines and Oil Burners)

*** Business Chances**

BROOKE REALTY CO INC 618 J
(See back cover and Real Est)
STEUDE P H 1011 7th (See side lines and Real Est)
TRIANGLE REALTY CO 1112 8th (See side lines)
UNITED STATES BOND & MORTGAGE CO 430 J (See front cover center lines and p 4)

*** Business Colleges**

HEALD'S BUSINESS COLLEGE
425 McAllister San Francisco (See backbone and opp p 325)
POLYTECHNIC BUSINESS COLLEGE 306 12th Oakland (See opp Colleges)
ST JOSEPH'S CONVENT AND ACADEMY G bet 8th and 9th

Butchers

See Meat Markets

Butchers' Supplies

Blair J N & Co 115 K

*** Butter Eggs and Cheese**

(See also Creameries)
CRYSTAL CREAM & BUTTER CO
1320-22 J

Cabinet Makers

(See also Furniture)
COFFMAN F H 1225 6th (See side lines)
Holt A H rear 827 N
HORIUCHI N 82 Japanese Alley (See p 20)
Lindstrom G F 520 1/2 I
SUTER-HEVENER MILL & MNFG CO 2d cor T (See bottom lines and p 10)

*** Cafeterias**

(See also Restaurants)
CAFETERIA SACRAMENTO 1009-13 K (See top lines)

*** Calendars**

BRACE H G & CO 706 1/2 K

*** Card Systems**

SILVIUS & SCHOENBACHLER
423 J
WAHL STATIONERY CO 923 K
(See bottom lines)

*** Care of Estates**

GARLOUGH REALTY CO 613 J
(See top lines)

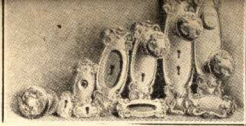
THE SUNDAY LEADER

Delivered to any part of the City or Oak Park at 25 cents per month

LARKIN & SON, Publishers - - - 307 J Street

S. BEER GOLD MILL & EXTRACTION CO., Inc.

Mnfrs. S. Beer Roller Quartz Mill
Assays, Purchasers Ores and Bullion,
Ores Tested, Carload Lots and Less.
OAK AVENUE near SEVENTH ST.
Rear Golden Eagle Hotel.



**Builders' Hardware and Mechanics' Tools
Sporting Goods, Stoves, Paints
Tin and Enamel Ware
1208 J ST.**

1911

CLASSIFIED BUSINESS DIRECTORY

841

HICKMAN-COLEMAN CO 724 J
(See top lines)
**UNITED STATES BOND & MORT-
GAGE CO** 430 J (See front cover
center lines and p 4)

**Carpenters Contractors and Build-
ers**

Anderson W A 3739 Magnolia
Birdsall H G 1415 1/2 20th
Blakemore W H 1712 S
Book Bros 1007 7th
Bostwick R L 2319 18th
Braun P J 1516 22d
Brosius F C Tullar nr J
Brown F H Cherry cor K
Bundock S J 2421 2d av
Burns J J 2708 1st av
Campbell J C 3111 5th av
Chance Silas 1122 17th
Clark J W 2705 X
Conradt Edw 2916 26th
Contell J H 2028 J
Cooksey E L 1919 10th
Davies L W 1618 18th
Davis T H 1417 28th
Dudley C H 515 11th
Eichler Geo 731 O
Ettel C J 1515 23d
Falconer David rear 719 I
Francies F L 2916 Wabash
Francies A P 2130 X
FRAZER W J Mont Clair av E
Sacto (See side lines and p 14)
Fritzsche R M 1615 Q
Fruhauf Nicholas Parker nr Upper
Stkn rd
Funk Fred 2408 Carnegie
Gardner E M 3601 Park
Gray C A 1108 11th
Grimshaw G R 24th nr 2d av
Gross E G 3106 East
Harris J E 1114 P
Harvie G E 2212 T
Hayes Geo 1015 10th
Hendren H A 2915 I
Henley O J 1801 V
Hook G E 718 18th
HORIUCHI N 82 Japanese Alley
(See p 20)
Houston J G 2705 O
Jacobs Geo 1214 9th
Johnson I L 32d nr M
Jones R S 522 I
Kapp John 1417 K
Keith E D 2520 27th
Kennedy W M 3330 Orange av

Kilborn O M 1421 L
Koch Carl K cor 34th
Lang M J Sunset nr Rose
Larrabee J R 2912 Lower Stkn rd
Lathrop & Johnson 1005 11th
Lewis W G 820 29th
Lucas J A 1604 V
McCormick E C 1018 S
McDougall T A 2712 1st av
McKay G W 1018 T
McKenzie M F 1126 T
McKoy W D & Co 1127 W
Ma Bee T G 2201 I
MARTIN G W & SONS 1217 19th
(See top lines and p 11)
Mason E S 3216 5th av
Mathews Construction Co 9th cor K
Melvin & De Campos 714 30th
Miller A F 3205 3d av
MORRILL F O & SON 2610 I (See
bottom lines and p 9)
Morten J L 2101 I
Neal Ben Cherry nr M St rd
Norris W W 1821 F
Ormsbee G C 3201 3d av
Parker J R 3118 2d av
Pierce E A 1st av nr 24th
Pitt & Farnsworth 2527 M
Pook Wm 1709 18th
Powell Robt 1911 28th
Ruiter R H 3125 3d av
Ryder H A 1223a 2d
Saunders Bros 37th cor J
Shadinger M H 2101 10th
Siller Bros 1614 13th
Silva J A 415 11th
Smith R M 2017 18th
Snyder W O 3027 Madrone
Stahl G B 2323 L
Sydenstricker Emery 2318 I
Thaler Kasper 2511 33d
Touhey Jas 1510 K
Townsend F J S 509 O
Tracy J Q 1807 O
Vanina Chas 2022 M
Van Zee Anthony 2707 I
Wendt & Morrell 2130 M
Whitney Merritt 1323 6th
Williams C C 2415 P
Windrick F Y 2319 I
Wynn H I 1022 27th

* Carpenters' Tools
OAKLEY PAUL 920 J (See center
lines and Hardware)

**Ameri-
can
Fish
Co.**



If It Swims
We Have It
714 J St.
Tel. Main 454
**BRANCH
K Cor. 11th**

**Auto
MACHINE
SHOP
CARRIAGE
AND
WAGON
BUILDING
REPAIRING
PAINTING
TRIMMING
ALBRIGHT
BROS.**
1112-14
24th St.
Tel. 1196 R

EXTRA COPIES of this Directory can be secured at
Wahl Stationery Co., 923 K street.
Price, \$6.00.

F. O. MORRILL & SON
CONTRACTORS AND BUILDERS
PHONE MAIN 3640 2610 I STREET.

TAKE
A
TAXI

**BRADLEY'S
AUTO AND
CARRIAGE
LIVERY**
1015 11th

QUEEN CITY CLEANING WORKS
BROWN BROS. LADIES' WORK 1004 4th St.
PROPS. A SPECIALTY Main 2816 R

Sherman Clay & Co.
Cecilian Player Pianos 
831 J ST.

842 SACRAMENTO DIRECTORY CO'S 1911

Carpet Cleaners
CULMSEE WALTER 1023 10th
(See adv)
Higbie W H 1900 N
RIVETT'S CARPET CLEANING
CO 1009 10th (See top lines)
Shooks S A 109 12th
Up To Date Carpet Cleaning Co
1117 J

*** Carpets Oilcloth and Matting**
BREUNER JOHN CO 600-608 K

*** Carriage Painters**
(See also Painters—Carriage)
ALBRIGHT BROS 1112-14 24th
(See side lines)
CHARLEVILLE R F Rear 2019 O
(See bottom lines and Automobile
Painters)

Carriage Trimmers
Baer & Copp 1006 5th
McAdams Beverly 515 12th
Thiede H S 1416 21st

Carriage and Wagon Makers
(See also Blacksmiths)
ALBRIGHT BROS 1112-14 24th
(See side lines)

Bennett Henry 520 12th
Bowman Carriage Co 1221 I
Brown Simeon 1100 K
Brusch C H 920 13th
Cechettini E J 1305 2d
Heilrath & Sons 915 8th
Keefe John 919 13th
Meister A & Sons Co 9th cor D

*** Carriages**
STUDEBAKER BROS CO 800 L
(See center lines)

Carriages and Wagons
Bennett W F 522 12th
JOHN DEERE PLOW CO 221-25 J
(See center lines)

*** Cartons**
SCHMIDT LITHOGRAPH CO 2d
and Bryant San Francisco (See
opp p 637)

Cash Checks
SACRAMENTO CASH CHECK CO
1st Floor John Breuner Co (See
top lines)

*** Cash Register Repairs**
LANGLEY W A 1025 10th (See side
lines)

Cash Registers
National Cash Register Co 527 J

*** Cat Fish—Sacramento River**
AMERICAN FISH CO 714 J and
K cor 11th (See side lines)

Caterers
Johnson B A 1801 G

*** Cement**
(See also Lime Plaster and Cement)
**SACRAMENTO CEMENT & SUP-
PLY CO** 512-16 Ochsner Bldg
(See center lines)

*** Cement Blocks**
SACRAMENTO SANDSTONE
BRICK CO 1005 8th (See center
lines and p 8)

*** Cement Contractors**
(See also Contractors—Cement and
Concrete)

CLARK & HENRY CONSTRUCTION CO 512-16 Ochsner Bldg
(See center lines)
MARTIN G W & SONS 1217 19th
(See top lines and p 11)

Cemeteries
City Cemetery Y cor 10th
EAST LAWN M St rd Office 605 J
Helvetia 31st cor J
Jewish J nr 31st

Vacuum Carpet Cleaning
WALTER CULMSEE
The Duntley Pneumatic Cleaner
For Sale or Rent

Tel. Main 2836 J 1023 TENTH ST.
I. T. ROBERTS CO., Inc.
Designers and Builders
Tel. Main 200 1008 8th St.

White Rose Wheat Flakes

FOR YOUR BREAKFAST

White, Pure, Delicious

At Your Grocer's

1911

CLASSIFIED BUSINESS DIRECTORY

843

Masonic Riverside rd nr Y
 Odd Fellows Lawn Riverside rd
 nr Y
 St Joseph's (Catholic) Freeport rd
 nr Y

* Cereals

PHOENIX MILLING CO 13th cor
 J (See top lines)
 SPERRY FLOUR CO 12th cor C
 (See top lines)

* Cesspools and Vaults Cleaned

LEWIS THOS 1916 10th (See p 6)

Chemists

BEER S GOLD MILL & EXTRAC-
 TION CO INC Oak av Rear Gold-
 en Eagle Hotel (See bottom lines)

Chimney Sweeps

Elliot Hector 1302 1/2 8th
 Heinz Chas 1307 K
 Mack J N 1119 6th

Chiropodists

Donovan Alex 430 Ochsner bldg
 Fletcher R J 320 P
 Flood Mrs M I 822 6th
 Maltby O F 716 1/2 K

Chiropactors

Phillips G E 435 Ochsner bldg

Christian Science Practitioners

Bradner Mrs C H 1423 O
 Bradner E H 1423 O
 Home of Truth The 1235 I
 Reilley Mrs A L 334 Ochsner bldg

Churches

Buddhist 418 O
 Calvary Baptist I cor 16th
 Cathedral of the Blessed Sacra-
 ment 11th cor K
 Central M E 11th nr I
 Christ Episcopal Cypress cor Sacto
 Church of Jesus Christ of Latter
 Day Saints 716 I
 Church of the Immaculate Concep-
 tion 32d cor Sacto av
 Congregational (First) 915 6th
 Ebenezer German Evangelical 10th
 nr P
 Emanuel Baptist 25th nr N
 English Lutheran 16th and K
 First Baptist 9th and L
 First Christian 16th cor L
 First Church of Christ Scientist
 I O O F Temple
 First Methodist Episcopal 6th bet
 K and L
 First M E South J cor 15th
 Free Methodist 14th nr O
 Fremont Park Presbyterian 1430 O

German Evangelical Lutheran K
 cor 12th
 Oak Park Baptist Cypress cor East
 Oak Park M E Madrone cor 34th
 Reorganized Church of Jesus Christ
 of Latter Day Saints 2331 K
 St Andrew's A M E 713 7th
 St Francis 26th and K
 St Mary's Catholic N nr 8th
 St Paul's Episcopal 15th cor J
 St Stephens' 3d cor O
 Santa Maria Catholic 820 N
 Seventh Day Adventist 2301 K
 Shiloh Baptist 6th nw cor P
 Temple B'nai Israel 15th and N
 Trinity Episcopal M and 26th
 United Brethren in Christ 19th cor I
 Westminster Presbyterian 13th
 cor K

Cider Manufacturers

Turner F A 2916 G
 Woods & O'Neil 3310 Y

Cigar Box Manufacturers

Sacramento Cigar Box Factory
 1215 R

Cigar Manufacturers

Clemens H J 1503 L
 Garbely John 727 I
 Gatto Achille 330 1/2 P
 Grande & Gonzalez 511 Oak av
 Jefferson & Molesworth 1008 9th
 Johnson Bros 910 K
 Knowles J G 221 I
 McCabe Thos 809 K
 Posner & Kueny 930 K
 Smith Delene rear 2016 3d
 Smith E W 1725 13th
 Starr F C 1422 J
 Von Hatten G S 429 12th

Cigars and Tobacco—Retail

(See also Confectionery and Fruit
 also Grocers)

AMERICAN PRODUCTION CO

1225 4th (See side lines and p 22)
 Arbuckle J A 130 K
 Behrens F A 722 K
 Berger Arnold 624 K
 Bianchi Frank 615 K
 Bloomberg Bros 1021 2d
 Boles Chas 920 8th
 Brown & Doyle 730 K
 Cohen Isidor 326 J
 Cohn R T 830 J
 Davis C H 300 J
 Dean A J 230 J
 Denny John 710 J
 Egan Bros Co 821 K
 Genshlea J G 507 K
 Ginsberg Jacob 621 K
 Ginsberg Saml 206 J
 Grande & Gonzalez 428 J

PAUL H. STEUDE
 Real Estate
 ..AND..
 Fire and
 Dutch Insurance
 German
 Alfalfa Ranches a Specialty. City and Country Property. Tel. Main 93. 1011 7th

SPRINGFIELD FIRE AND MARINE INS. CO.
 OF
SPRINGFIELD, MASS.
 REPRESENTED BY
REED & ELLIOTT
 PHONE MAIN 233
 1015 FOURTH STREET

LOUIS MOREING RAILROAD and EXCAVATING CONTRACTOR

Telephone MAIN 985

501-2 OCHSNER BLDG

SACRAMENTO

**24
STAMPS
25c**

**POSTALS
FINISHED
TEN MINUTES
NIGHT or DAY**

**CABINETS
\$1.50 per doz.**

**Amateur Finishing
View Work**

**H. TRACY
Artist & Mngr.**

**PING
PONG
HOTO CO.
530 K St.**



FRANCISCO'S
NEW RIVERSIDE DRIVE

**PAGE
16**

844 SACRAMENTO DIRECTORY CO'S 1911

CIGARS AND TOBACCO—RETAIL - Continued

Hallauer Edw 501 K
Halligan P J 308 K
Heiser O L 701 J
Hunt Geo 300 K
Jacobs T S 624 J
Kerson C D 1125 2d
King B W 330 K
Magennis J H 601 J
Meister Howard 500 K
Miller A S 318 K
Moll Bros 219 K
Moloney & Douglas 812 K
Mulqueeny Frank 918 K
Nason W I 926 J
Normington Mrs Minnie 913 2d
Rothholz Caesar 405 K
Rothholz & Simmons 207 K
Ruth J E Golden Eagle Hotel
Samuel Manuel 800 K
Silberstein C A A 817 2d
Stevenson A J 826 J
Teitelbaum Julius 216 J
Vero Frank 228 K
Wilson J N 700 K
Wilson Thos 901 2d

Cigars and Tobacco—Wholesale
Scheunert Bros Co 707 J
Warren B R 1004 J

*** Circularizing**
BLUM'S ADVERTISING AGENCY
1117 J Main Office 693 Mission
San Francisco

*** City Property**
BEDWELL & FLEISHER 704 J
(See top lines)
BROOKE REALTY CO INC 618 J
(See back cover and Real Est)
COPE REAL ESTATE CO LTD
1012 8th (See bottom lines)
FOSTER W T CO 35th cor Cypress
(See top lines and Real Est)
GARLOUGH REALTY CO 613 J
(See top lines)
HAWK & CARLY CO INC 623 J
(See center lines)
HICKMAN-COLEMAN CO 724 J
(See top lines)
JOHNS FRED J CO THE 1023 9th
(See center lines and Real Est)
McCLELLAND H A CO 620 J (See
side lines)
REED & ELLIOTT 1015 4th (See
center lines)
ROBERTSON-GOVAN CO 1025 8th
(See center lines)
STEUDE P H 1011 7th (See side
lines and Real Est)
TRIANGLE REALTY CO 1112 8th
(See side lines)

**UNITED STATES BOND & MORT-
GAGE CO** 430 J (See front cover
center lines and p 4)
WOOD & TATUM CO 1008 8th
(See backbone and Real Est)

Civil Engineers and Surveyors
Boyd J C 1007 8th
Corson C L 918 6th
Furley H J 429 Ochsner bldg
GENERAL ENGINEERING CO
1104 9th (See bottom lines)
JENKINS M A 36th cor Y
OLIVER EMERY 314 Ochsner
Bldg
PHINNEY CATE & MARSHALL
405 Ochsner Bldg
Pierson D W 431 Ochsner bldg
Pierson J C 432 Ochsner bldg
Reynolds & Whitman 529 Ochsner
bldg
SEARS H H 230 Ochsner Bldg

*** Cleaners Dyers and Scourers**
(See also Dyers)
**CALIFORNIA EXPERT CLEAN-
ERS** 1017 K (See side lines)
CECIL THE 807 J (See p 13)
DUCHEZ JEROME 1016 23d (See
Dyers)
GERBER & FUSS DYE WORKS
1711 N
QUEEN CITY CLEANING WORKS
1004 4th (See side lines)

Cloaks and Suits
See Dry Goods

Clothing
Archbold & Hamilton 905 K
Barnard Morse 409 K
Bloom M Co 515 K
Bloomberg J B 1112 3d
Cohn Israel 1014 3d
Eastern Outfitting Co 922 J
Elkus Albert 830 K
Finkelstein Mrs Flora 126 K
Frommer Bernard 303 K
George Abraham 1117 2d
Goldstein Harry 1123 2d
Goldstein Saml 1119 2d
Gori Lawrence 304 J
Greenberg Saml 321 K
Greenebaum Rudolph 612 J
Greenwald Abraham 1113 2d
Hart & Mier 726½ K
Leoni Anton 506 J
Levey G J 331 K
Levy Morris 206 K
Markowitz Max 1121 2d
Marks Gustavus 421 K
Marks & Nathan 229 K
Mostovey Mrs Sadie 205 L
Nathan Sol 802 J
Petrie W M 622 J

**SEE
PAGE
13**



MRS. FRED MASON, Prop.
Best Work in City
21ST AND O STS.
TELEPHONE MAIN 211

NATUMAS ROCK

201-4 HAGEMSTEIN BLDG.

P. O. BOX 311

TEL. M 740

SACRAMENTO

1911

CLASSIFIED BUSINESS DIRECTORY

845

A. J. MADSEN, Pres. and Gen. Mngr.

Phone Main 3389

Sacramento Collecting Co.

INCORPORATED

All Branches of Collections Promptly Attended To

Reliable Correspondents in Every Town in the United States.
Special Facilities for Handling Railroad and Country Collections.

1014A 7th St.

SACRAMENTO

Pickett R A 600 J
Plummer A W Co 1109 7th
Poor People's Clothing Store 106 I
Ratzanefsky Jacob 211 L
Rush Mendel 208 K
SAKIYAMA N CO 1213 3d (See
p 18)
Seelig Mrs Johanna 906 2d
Wolf Co 808 J
Zimmerman Geo 215 L

HENRY'S LAW & COLLECTION
CO 606 I (See top and bottom
ends)
International Protective Assn 222
Ochsner bldg
Interstate Commercial & Collection
Agency 910 5th
MADSEN A J 1014a 7th (See front
cover and adv)
SACRAMENTO COLLECTING CO
1014a 7th (See front cover and
adv)
VALLEY ADJUSTMENT CO 409
Ochsner Bldg (See side lines)

* Coal

(See also Fuel)

Sacramento Coal Co Front cor O

Collection Agencies

Conklin T A 426½ J

Colleges and Schools

Atkinson's Sac Bus College 1303 J
Capital City Commercial College
1015 10th

CAUTION

Pay no money in advance to itinerant Directory Canvassers. We are led to mention this from the fact that certain parties have been fraudulently using our publications as specimens and by that means collecting moneys in advance. Before signing an order, see that it has the name of SACRAMENTO DIRECTORY CO. printed thereon. We ask no payment until the work is delivered, and our solicitors have strict orders not to take payment for either advertisements or subscriptions.

SACRAMENTO DIRECTORY CO.

H. D. MILLARD

1623 O ST.

Tel. Main 3509

CONTRACTOR

FOR ALL KINDS OF

Grading ^{Dredging} Excavating

SACRAMENTO BUILDERS' SUPPLY CO. INC.

A. R. MACSWAIN, MANAGER

Sash, Doors, Glass, Weights and Cords, Screens, Window
Frames, Mouldings and General Mill Work

Phone Main 514

1311-15 J STREET

F. H. COFFMAN

Pianos Repolished and Cabinet Work in All Branches

Interior Painting and
Hardwood Finishing

ALL KINDS OF FURNITURE REPAIRED AND REFINISHED
1225 SIXTH STREET--OLD PAVILION

**HOGENS
&
D'ARTENAY
MNFG.
CO.
Electric, Gas
OR
Gasoline
Pumping
Plants
Installed
1800 R St.**

**J. H. GARLOUGH, PRES.-MNGR.
Real Estate, Loans, Insurance**

613 J ST. EXPERT APPRAISERS Tel. M 500
846 SACRAMENTO DIRECTORY CO'S 1911

COLLEGES AND SCHOOLS - Continued
CHRISTIAN BROTHERS COLLEGE K sw cor 12th (See bottom lines and adv)
HEALD'S BUSINESS COLLEGE 425 McAllister San Francisco (See backbone and opp p 325)
 Howe's Academy and Business College 1028 J
 International Correspondence Schools 328 J
MATER MISERICORDIAE HOSPITAL AND TRAINING SCHOOL FOR NURSES 23d bet Q and R (See opp p 482)
 Moler System of Colleges 222 J
POLYTECHNIC BUSINESS COLLEGE 306 12th Oakland (See adv opp)
 S P Telegraph & Short Hand School 328 J
ST JOSEPH'S CONVENT AND ACADEMY G cor 9th
 St Stephen's School O cor 3d
 Seventh Day Adventist Parochial School 2301 K

*** Colonization Lands**
BROOKE REALTY CO INC 618 J (See back cover and Real Est)
HICKMAN-COLEMAN CO 724 J (See top lines)
STEUDE P H 1011 7th (See side lines and Real Est)
UNITED STATES BOND & MORTGAGE CO 430 J (See front cover center lines and p 4)

*** Color Printers**
SCHMIDT LITHOGRAPH CO 2d and Bryant San Francisco (See opp p 637)

*** Columns**
BANTA A J Rear 314 10th (See back cover and p 11)
SACRAMENTO PLANING MILL & FURNITURE CO 3d cor V (See top lines and p 9)
SUTER-HEVENER MILL & MNFG CO 2d cor T (See bottom lines and p 10)

*** Commercial Colleges**
HEALD'S BUSINESS COLLEGE 425 McAllister San Francisco (See backbone and opp p 325)
ST JOSEPH'S CONVENT AND ACADEMY (COMMERCIAL DEPT) G cor 9th

*** Colonization Companies**
SACRAMENTO VALLEY COLONIZATION CO 426 Ochsner Bldg

**Christian Brothers
College**

**Boarding and Day School,
Primary, Grammar, High
School, Collegiate and
Commercial Departments**

For Particulars Apply to

BROTHER V. LEO, Director

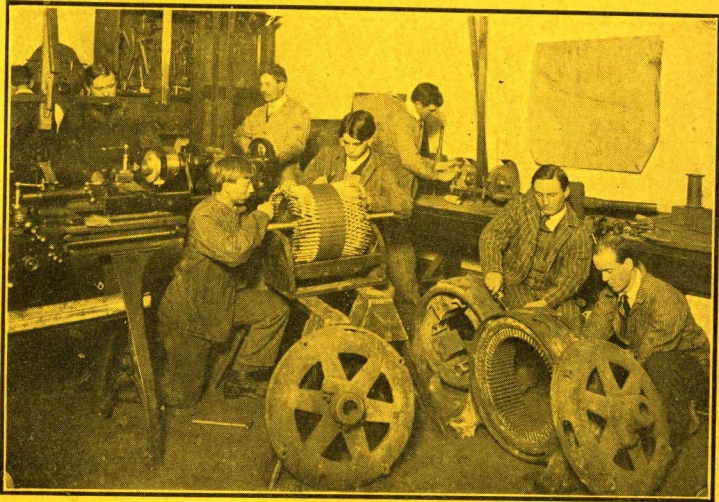
**Brown
&
Netherland
HAY
GRAIN
AND
FEED
AGENTS
Peacock Flour
and Meals
Mill and Office
12th and B Sts.
Tel. M 849**



**Fire Brick and Fire Clay
PRESSED BRICK, ALL COLORS
VITRIFIED SEWER AND CONDUIT PIPE
OCHSNER BUILDING**

Polytechnic College of Engineering

Twelfth and Harrison Streets
OAKLAND, CAL.



Students Winding a 10-H. P. Induction Motor in the Electrical Laboratory

The Polytechnic College of Engineering

is the most practical school of its kind in the west. It is the only technical college in California that engages in actual engineering work.

PLAN AND POLICY—To give to young men an opportunity to specialize on the essential branches of a technical course without compelling them to take the non-essential branches.

To give a more practical training and in a shorter time than our Universities can give.

Every modern equipment—Machine Shops, Electrical Laboratories, Steam Plant, Pattern Shops, etc.

COMPLETE COURSES IN

Civil Engineering

Electrical Engineering

Mechanical Engineering

Mining Engineering

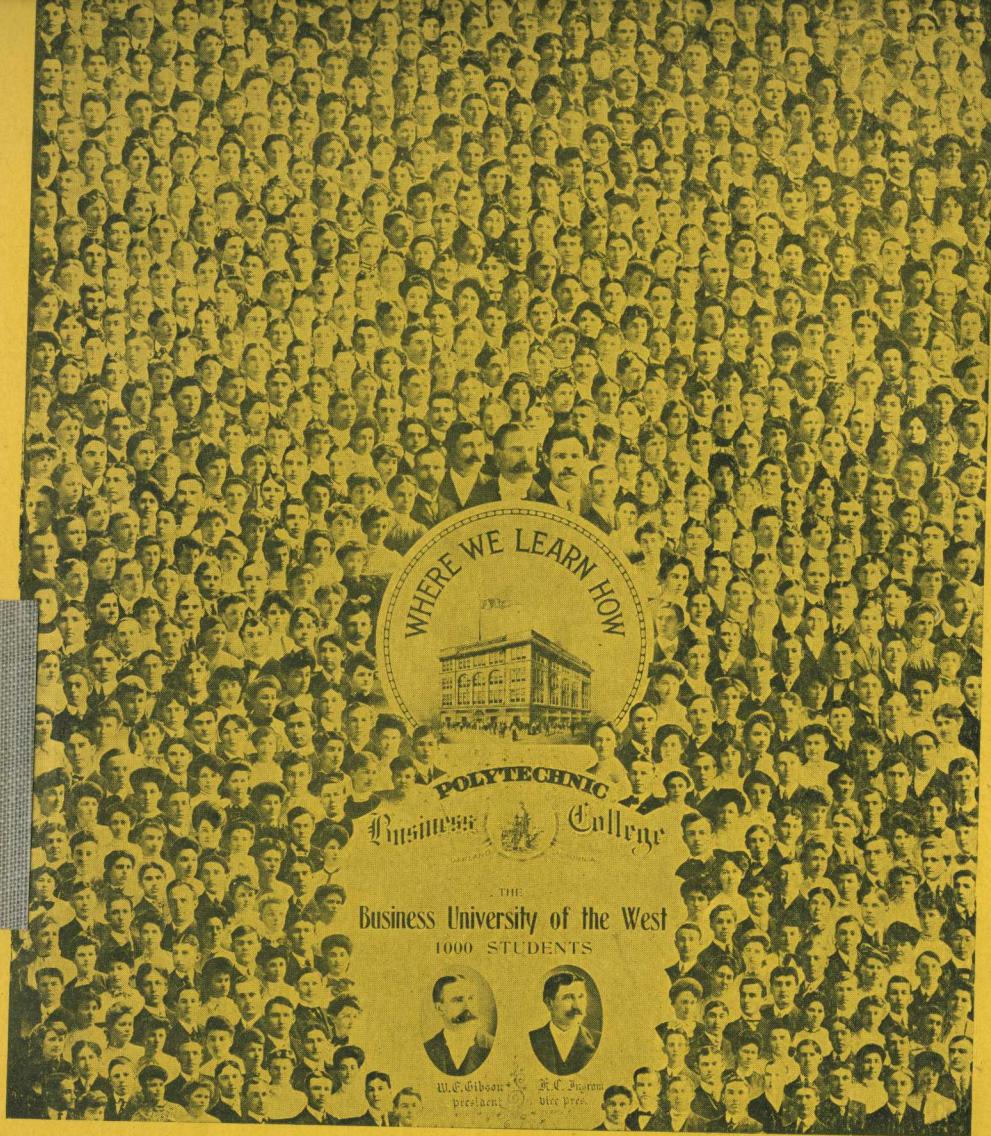
Architecture

W. E. GIBSON, President

H. C. INGRAM, Vice-Pres.

WRITE FOR CATALOGUE

College in Session the Year Round



POLYTECHNIC BUSINESS COLLEGE

306 Twelfth Street, Oakland, Cal.

The Great Business Training School of the West

W. E. GIBSON, President

(Incorporated Capital Stock, \$100,000.00)

H. C. INGRAM, Vice-President

FIRST NATIONAL BANK, Treasurer

☞ Prepares young men and women for highest salaried business positions

☞ The Finest Equipped Business College in the United States.

☞ Highest Standards in all Business and Stenographic Training

☞ Every Graduate for Ten Years Employed

☞ Endorsed by Court Reporters, Banks, Business Houses and Educators

College in Session the Entire Year and Students Admitted at any Time

Write for Illustrated Catalogue.

Floral Designs and Set Pieces
Shrubs, Plants and Shade Trees
BEST SERVICE IN CITY AT LOWEST PRICES

1911 CLASSIFIED BUSINESS DIRECTORY 847

*** Commercial Photographers**
PING PONG PHOTO CO 530 K
 (See side lines and p 16)

Commission Merchants
 Ennis-Brown Co 100 J
 Henderson-Longton Co 1127 Front
 Hynes J P & Co 122 K
 Longton Produce Co 109 K
 McMillin-Gordon Co 227 J
 May & Co 515 K
 Renschler-Caffaro Co 223 I
 Wood-Curtis Co 117 J

*** Compressed Air Cleaners**
SACRAMENTO COMPRESSED AIR
CLEANING CO 1009 10th (See
 top lines)

*** Concrete Building Blocks**
SACRAMENTO SANDSTONE
BRICK CO 1005 8th (See center
 lines and p 8)

*** Concrete Construction**
CLARK & HENRY CONSTRUCTION
CO 512-16 Ochsner Bldg
 (See center lines)
MARTIN G W & SONS 1217 19th
 (See top lines and p 11)
RANDSON CONCRETE CO 328 J

*** Conduit Pipe**
SACRAMENTO SANDSTONE
BRICK CO 1005 8th (See center
 lines and p 8)
SILICA BRICK CO 416 Ochsner
Bldg (See bottom lines and p 12)

Confectioners—Wholesale
 Gimbal Brothers Co 1021 Front
 Marino F C 2014 27th

Confectionery and Fruit
 (See also Cigars and Tobacco also
 Grocers)

AMERICAN PRODUCTION CO
 1225 4th (See side lines and p 22)
 Boyd A L 1117 19th
 Brockenauer Mrs Carolina 2127 K
 Burrell Mrs W F 1128 8th
 Caros & Dulames 903 2d
 Cunningham F V Lower Stkn rd
 cor 2d av
 Demers L H 424 K
 Dimas Nicholas 823 2d
ENDO BROS 221 L (See p 19)
 Farmer R R 1131 J
 Farris H O 3016 35th
 Griffeth C M 1212 25th
 Hondros Geo 1200 10th
 Koutchis & Koutchis 930 J
 McCurdy Mrs Hellon 3715 Cypress
 McLaughlin John 829½ 2d
 Mack S H 1131 8th
 Manchester Mrs M L Broderick

Miller Mrs A B 921 2d
 Moffett Henrietta J 3429 Park
 Morgan W C 1012 9th
 Moss G H 1023 6th
 Orr Mrs L G 1414 24th
 Philbrick & Co 819 K
 Pierce B L 2933 35th
 Schneider Mrs Johanna Upper Stkn
 rd cor Magnolia av
 Smith Georgia 2330 K
 Trust Wm 728 K
 Yarbrow T D 311 K
 Zampathas Bros 307½ and 505 K

*** Constructing Engineers**
GENERAL ENGINEERING CO
 1104 9th (See bottom lines)

*** Construction Companies**
CLARK & HENRY CONSTRUCTION
CO 512-16 Ochsner Bldg
 (See center lines)
GENERAL ENGINEERING CO
 1104 9th (See bottom lines)

*** Consulting Engineers**
GENERAL ENGINEERING CO
 1104 9th (See bottom lines)

*** Contracting Engineers**
GENERAL ENGINEERING CO
 1104 9th (See bottom lines)
SACRAMENTO BURNER & OIL
CO 1520 J (See top lines)

*** Contractors—Artificial Stone**
MARTIN G W & SONS 1217 19th
 (See top lines and p 11)

Contractors—Brick and Stone
 Betz F H 3628 5th av
 Haley J W 2022 22d
 Henley A J 1721 17th
 Henley O A 1621 13th
 Herndon G L 914 T
 Lastra F P 2426 V
 McClain Henry 1208 Whitney av
MARTIN G W & SONS 1217 19th
 (See top lines and p 11)
 Murray G W 1005 15th
SACRAMENTO SANDSTONE
BRICK CO 1005 8th (See center
 lines and p 8)
SILICA BRICK CO 416 Ochsner
Bldg (See bottom lines and p 12)
 Vandenburg G E 1124 F

*** Contractors—Bridge and Wharf**
CLARK & HENRY CONSTRUCTION
CO 512-16 Ochsner Bldg
 (See center lines)
JENKINS & WELLS 36th cor Y
 (See p 14)
 Missouri Valley Bridge & Iron Co
 Broderick



NEW PATENT THOMAS OIL BURNER
New Patent Thomas Automatic Governor
 WRITE FOR PARTICULARS
E. W. THOMAS OIL BURNER CO., Inc.
 300-301 ELKS BUILDING
 STOCKTON

Carlaw Bros.
GRANITE AND MARBLE
WORKS.
 Contractors for All Kinds of Building Stone Work
 TENTH AND R STREETS SACRAMENTO

CHRISTIAN BROTHERS COLLEGE

K STREET, CORNER OF TWELFTH
 BOARDING AND DAY SCHOOL
 Primary, Grammar, High School. Collegiate and Commercial Departments

**VIOLA
SANFORD**

**Multigraph
Work
Public
Stenographer
Typewriter
ETC.**

1004 5th St.

Tel. M 2812 J

**Larkin & Son
307 J Street
...Phone, Main 324...**

**Book and Job
AND
Advertising
Novelties**

PRINTING

**HICKMAN-COLEMAN CO. INC.
REAL ESTATE AND INSURANCE**

TEL. MAIN 73

724 J

848

SACRAMENTO DIRECTORY CO'S

1911

*** Contractors—Building**
(See also Carpenters Etc)
CLARK & HENRY CONSTRUCTION CO 512-16 Ochsner Bldg
(See center lines)
FRAZER W J Mont Clair av E Sacto (See side lines and p 14)
HORIUCHI N 82 Japanese Alley (See p 20)
MARTIN G W & SONS 1217 19th (See top lines and p 11)
MORRILL F O & SON 2610 I (See bottom lines and p 9)

Contractors—Cement and Concrete
Baltic Gabriel & Soracco R and 23d Barry B N 2919 D
Berry John 3007½ Lower Stkn rd
Bertolucci Antonio rear 2021 N Breslin J J 1214 E
Carstern G C 3201½ 2d av
Central Calif Cement Construction Co 407 J
Clark E L 804 U
CLARK & HENRY CONSTRUCTION CO 512-16 Ochsner Bldg (See center lines)
Davis Henry 3518 Magnolia
Ferren F J 2616 31st
Florance A A 2905 W
Hart & Harvey 517 20th
Hartman E W 1617 20th
Hilmer F E 1017 P
Keagy Edw 3610 5th av
MARTIN G W & SONS 1217 19th (See top lines and p 11)
Melvin Henry 3709 Park
Parker R W & Son 1311 21st
Shearer John D 2018 19th
Speich John 315 22d
Teichert Adolph 2401 J

*** Contractors — Concrete Construction**
CLARK & HENRY CONSTRUCTION CO 512-16 Ochsner Bldg (See center lines)
JENKINS & WELLS 36th cor Y (See p 14)

*** Contractors—Crushed Rock**
NATOMAS ROCK DEPT 201-4 Hagelstein Bldg (See top lines and adv)

*** Contractors—Cut Stone**
CARLAW BROS 10th cor R (See side lines and Marble Wks)

*** Contractors—Electrical**
OAKLEY PAUL 920 J (See center lines and Hardware)
ROGERS & d'ARTENAY MNFG CO 1800 R (See side lines)
Contractors—Excavating
MILLARD H D 1623 O (See bottom lines and p 12)

Contractors—General
CLARK & HENRY CONSTRUCTION CO 512-16 Ochsner Bldg (See center lines)
Dehn Henry 2810 J
FRAZER W J Mont Clair av E Sacto (See side lines and p 14)
GENERAL ENGINEERING CO 1104 9th (See bottom lines)
Hughes Michael 2308 N
JENKINS & WELLS 36th cor Y (See p 14)
McGILLIVRAY CONSTRUCTION CO 1007 7th
MARTIN G W & SONS 1217 19th (See top lines and p 11)
MILLARD H D 1623 O (See bottom lines and p 12)
MOREING LEWIS 502 Ochsner Bldg (See bottom lines and p 14)
MORRILL F O & SON 2610 I (See bottom lines and p 9)
Murcell & Haley 408 Ochsner bldg
RANSOME CONCRETE CO OF CAL 328 J

Contractors—Grading
JENKINS & WELLS 36th cor Y (See p 14)
Lowry Felton 1610 K

NATOMAS ROCK

BEST FOR

Concrete Construction

AND Road Building

For Prices and Full Information, Write, Call or Phone

NATOMAS ROCK DEPT., 201-204 Hagelstein Bldg., 9th and K Sts. SACRAMENTO, CALIF. P. O. Box 311
Tel. Main 740

**Real Estate
Insurance
Bonds Executed
Loans — Rentals**



We Sell The Earth
P. COLLINS, Mngr.
2818 - 35th - Oak Park
TEL. RED 871

GEO. W. MARTIN & SONS

BUILDERS AND GENERAL CONTRACTORS

Office and Residence, 1217 19th St.

SEE PAGE 11

1911

CLASSIFIED BUSINESS DIRECTORY

849

MILLARD H D 1623 O (See bottom lines and p 12)

MOREING LEWIS 502 Ochsner Bldg (See bottom lines and p 14)
Snider T C Broderick

*** Contractors—House Moving**

ELLIS & JOHNSON 520½ 20th (See p 14)

Contractors—Labor

See Employment Agencies

Contractors—Lathing

Scollan T P 2919 T

*** Contractors—Mill Work**

(See also Planing Mills)

BANTA A J Rear 314 10th (See back cover and p 11)

BURNETT & SONS R and 24th (See p 10)

SACRAMENTO PLANING MILL & FURNITURE CO 3d cor V (See top lines and p 9)

SUTER-HEVENER MILL & MNFG CO 2d cor T (See bottom lines and p 10)

*** Contractors—Oil Burners**

SACRAMENTO BURNER & OIL CO 1520 J (See top lines)

Contractors—Paving

CLARK & HENRY CONSTRUCTION CO 512-16 Ochsner Bldg (See center lines)

Contractors—Plastering

Brindley E T 3200 Y
Butler C R 2703 Calif
Callahan R E 1914 8th
Farrell Thos rear 2916 Q
Finnigan Jas 618 L
Gieseke F J 1015 23d
Goodwin C H 2201 I
Kenealy J J 2923 O
Nix H F 1214 S
Pennish T J 1516 O
Scollan T F 2919 T
Slaughter Wm 411 M
White J W 2915 Orange

Contractors—Railroad

MOREING LEWIS 502 Ochsner Bldg (See bottom lines and p 14)
Saul S L 719 E

Contractors—Sewer

CLARK & HENRY CONSTRUCTION CO 512-16 Ochsner Bldg (See center lines)
Moore Jos 3707 Magnolia
Twaddle E E 2513 N

Contractors—Street Work

Burns T M 2207 N
CLARK & HENRY CONSTRUCTION CO 512-16 Ochsner Bldg (See center lines)
Haedrich Peter 2500 W
Lawrence Jos Broderick

Contractors—Teaming

Armstrong W I 2119 J
Bratton C F 2901 B
Cress W F 4130 Magnolia
McGuire A T 317 17th

*** Conveyancers**

PIERCE-BOSQUIT ABSTRACT & TITLE CO 827 7th (See book mark)

Coopers

Lindenmayer John 2918 M
Sacramento Cooperaage 320 R

*** Copper—Sheet and Soldering**

PACIFIC METAL WORKS 153 1st San Francisco

*** Corrugated Paper**

SCHMIDT LITHOGRAPH CO 2d and Bryant San Francisco (See opp p 637)

Costumers

Enos W H 1110 K
Taylor W J 1420 E

*** Counters**

BANTA A J Rear 314 10th (See back cover and p 11)
BURNETT & SONS R and 24th (See p 10)
SACRAMENTO PLANING MILL & FURNITURE CO 3d cor V (See top lines and p 9)
SUTER-HEVENER MILL & MNFG CO 2d cor T (See bottom lines and p 10)

Cracker Manufacturers

Capital Candy & Cracker Co 806 2d
National Biscuit Co 318 R

*** Cream Separators**

JOHN DEERE PLOW CO 221-25 J (See center lines)

Creameries

(See also Dairies)

Engle Mrs Florence 1121 5th
Silver Crest Creamery Co 1221 7th
Colton & Son Elk Grove

Crockery and Glassware

BREUNER JOHN CO 600-608 K
Sac Glass & Crockery Co 1019 10th

1515 Twentieth Street

Cascade Laundry

Telephone, Main 131

CALIFORNIA EXPERT CLEANERS

Goods Delivered on Day Promised, Thoroughly Cleaned

Works 1910 Q St. - Tel. M 937 Office 1017 K St. - Tel. M 403

POWER DEVELOPMENT . RECLAMATION . CITY ENGINEERING

GENERAL ENGINEERING COMPANY

Civil and Constructing Engineers

PHONE 3839 R

1027 K ST.

W. A. MACKINDER

DISTRICT MANAGER

Aetna Life Ins. Co. and Aetna Accident and Liability Co.

AGT. PELICAN FIRE ASSURANCE CO.



SPERRY FLOUR CO.

Manufacturers of Pioneer Flour

CEREALS A SPECIALTY

Twelfth and C Streets

Sacramento

850

SACRAMENTO DIRECTORY CO'S

1911

*** Crushed Rock**

NATOMAS ROCK DEPT 201-4
Hagelstein Bldg (See top lines
and Contractors—Crushed Rock)
**SACRAMENTO CEMENT & SUP-
PLY CO** 512-16 Ochsner Bldg
(See center lines)

*** Cut Stone**

**SACRAMENTO SANDSTONE
BRICK CO** 1005 8th (See center
lines and p 8)

*** Cutlery**

EMIGH HARDWARE CO 1208 J
(See top lines)
LANGLEY W A 1025 10th (See side
lines)
OAKLEY PAUL 920 J (See center
lines and Hardware)

*** Cuts**

SUTTER ENGRAVING CO 420 J
(See center lines)

Dairies

(See also Creameries)

Aschwanden Jos M cor 36th
Bagenstos Mrs Louise Riverside rd
4 s Sutterville rd
Borchers Mrs Bridget 2311 H
Capital Dairy 315 16th
Cascade Dairy 1211 X
Gerig A J 2710 Lincoln
Gerig Robt 3005 U
Golden Eagle Dairy 300 N and rear
1311 P
Hack C J 2215 H
Imfeld Jos & Sons Freeport rd nr
De Longe
Kaelin John Riverside rd 13 s Y
Lake Ranch Dairy Broderick
Royal Dairy 1013 8th
Valley Dairy 34th cor T

Dancing Academies

Churchill J C 424 M
Favero & Fisch 912 K

Decorators

COFFMAN F H 1225 6th (See side
lines)
Cox & Son 2709 K

Delicatessen

(See also Grocers)

Cotton W D 914 L
Day Mrs L C 830 M
Landis C H 2005 J

Dental Laboratories

Blodgett W L 318 Hagelstein bldg
Stauffer H C 1021 10th

Dental Supplies

Edwards J W Co 6th fl People's
Bank bldg
Sacramento Dental Depot 512 J

Dentists

Albergaria J S 1005 K
Barrett C G 1115 D
Bowers R H 201 Ochsner bldg
Carr G B 610 K
Deane B L 915 4th
Deuel E C 1007 10th
Doyle & Dias 200½ K
Eberle Albert 902 J
Engstrom C O 530 K
Gallot Jules 609½ J
Gehan R F 922½ J
Giffen R B 205 Hagelstein bldg
Girardey W O 1005 K
Gorham P W 406 People's Bank bldg
Hunger F J 406 People's Bank bldg
Kestler F H 205 Hagelstein bldg
Lindsay J A 1005 K
McCurry J M 1216 7th
Metcalfe F H 922½ J
Rees F G 3418 Sacto
Renwick W H 15 I O O F Temple
Rex Dental Co 615 K
Richards W F 530 K
Rodda G S 922½ J
Scott J H 305 Bryte bldg
Shaw I G 1007 10th
Shepard S B 1008 8th
Smith R E 304 Ochsner bldg
Stephenson H H 504 People's Bank
bldg

Taylor W J 706½ K
Todd C N 610 K
Tolton C J 1005 K
United Dentists 8th cor K
Waggoner L B 1 I O O F Temple
Wait R L 918 6th
WALTON WAY DENTISTS 6th
cor K

Webber P A 601½ K
Weldon E J 902 J
Whitman E W 501½ K
WILDER J O JR 25 Physicians'
Bldg
Yoshinaga M 1227 3d
Farmer G C Folsom
Simmons W A Folsom
Frazier J E Galt
Shephard A B Galt

Department Stores

Hale Bros K cor 9th
Weinstock Lubin & Co 400 K

Dermatologists

Bouk Mrs Lottie 411 L
JODOIN L E 1114 8th (See p 3)
Ross Maud M 1123 8th
**WERNER'S HAIR DRESSING
PARLORS** 721 K

**CASEY
&
DALTON**

WOGARD

Prescription

WATTERC...ATO