

W.R. Smith

Mechanical Expert
and Draughtsman,
226 Market St., S. F.

MACHINES
DESIGNED
Inventions
patented

PATENTS
SECURED.

FIRE

MARINE

FIREMANS FUND

**INSURANCE COMPANY
SAN FRANCISCO, CAL.**

Capital, \$1,000,000 Assets, \$3,500,000
Home Office: 401 to 407 California Street

L. P. DREXLER, Presd. JOSHUA BARKER, Secy.
ALBERT GALLATIN, Vice Presd. CALIFORNIA STATE BANK, Treas
G. P. GILBERT, General Manager

SACRAMENTO Electric, Gas & Railway Co.

OFFICE, SIXTH AND H STREETS

Electric Power, Arc, and Incandescent Lighting
Supplied from a Reliable Power Transmission Plant

SACRAMENTO, CAL.

BLAKE, MOFFITT & TOWNE

Dealers in



PAPER

512-516 Sacramento and 519 Commercial Sts.

SAN FRANCISCO, CAL.



Rohstaller's Pilsner
Keep Always on Draught
at the
Gift Edge Saloon
1024 J Jacob Grahlner
Proprietor

THE JOHN M. KLEIN ELECTRICAL WORKS
Headquarters for Everything Electrical
421-423 MONTGOMERY STREET, S. F. Tel. Main 389

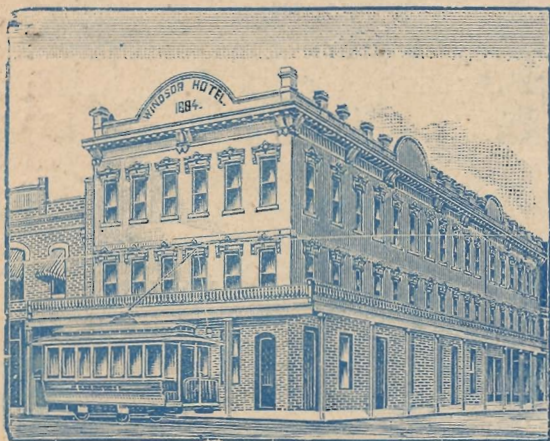
McLaughlin Trucking Co.

1009 Second Street

Telephones
Capital 496
Sunset 43

WINDSOR HOTEL

PETER FLAHERTY, Prop'r.



Cor. 8th and J Sts., Sacramento. Cal.



Board and Lodging, \$5 to \$8 per Week.

Single Meals, 25 Cents.

Board, \$4 per Week.

Single Rooms, 50 Cents.

Family Rooms, \$1 to \$2.

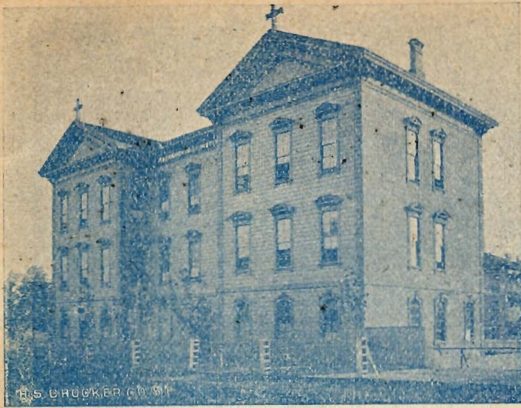
Board

*9 yr
advt*



BEST FAMILY HOTEL IN THE CITY

Cars of the Electric Street Railroad Pass Our Door Every Few Minutes.



Sacramento Institute

12th and K Sts.
Sacramento, Cal.

A Select Boarding and Day
School Conducted by the
Christian Brothers.

THE Collegiate Course includes Reading, Penmanship, Grammar, Evidences of Religion, Geography, Arithmetic, Algebra, History (ancient and modern), Epistolary Correspondence, Rhetoric, Composition, Elocution, Vocal and Instrumental Music, Physiology, Physics, Geology, Chemistry, Geometry, Trigonometry, Astronomy, Surveying, Logic, Phonography, Typewriting, French, German, Spanish, Italian, Latin and Greek.

Besides the regular collegiate branches, a practical and thorough business education is given to those students who desire to prepare themselves for the work required in the regular routine of business, offices and mercantile life. The course includes Commercial Law, Political Economy, Penmanship, Arithmetic, History, Composition, Letter Writing, the various branches of Bookkeeping, Short-hand and Typewriting.

As the College is conducted by the Christian Brothers, a religious order whose members devote their lives to the Christian education of youth, the public need hardly be reminded that while every effort is made to advance the students in secular branches, the Brothers never lose sight of the moral training of those confided to their care, but constantly, both by word and by example, endeavor to train young men to become Christian gentlemen and good citizens.

Students are received at any time during the year.

The Institute Band of 30 pieces rehearses daily. Students showing musical talent may be admitted on application.

For further particulars apply to

BRO. AMBROSE, Director.

"The Metropolitan,"

N. W. Cor. Fifth and K Streets,

SACRAMENTO, CAL.

Handsomely Furnished Rooms, Single or En Suite

Centrally Located.

Strictly First-Class.

Special Attention to Transients.

Electric Cars Pass the Door to All Parts of the City.

RESTAURANT IN SAME BUILDING.

Mrs. E. J. C. KETCHUM, Proprietor.



\$2.50 Shoes a Specialty

\$5.00 Shoes a Specialty

A. Caselli

Manufacturer and
Importer of Exclusively

**MEN'S
BOOTS
AND
SHOES**

Repairing Neatly Done

527 K Street

OPP. MASONIC TEMPLE

SACRAMENTO, CAL.

DIRECTORY

—OF—

SACRAMENTO CITY AND COUNTY

FOR 1898.

CONTAINING

Names, Places of Business and Residences

OF ALL ADULT POPULATION OF THE CITY AND COUNTY,

INCLUDING

Names of Merchants, Manufacturers, Business and Professional Men,
Bookkeepers, Clerks, Salesmen, Laborers, Etc., also State,
County, and Municipal Governments, Schools,
Fraternal Societies, Etc., of Sacramento City,

TOGETHER WITH A

BUSINESS DIRECTORY

OF THE WHOLE COUNTY.

F. M. HUSTED, Publisher,

423 J Street, - - - - Sacramento.

Main Office: 530 California Street, - - San Francisco, Cal.

BLANK BOOK

Silvius & Schoenbackler

MANUFACTURERS.

423 J Street.

Sal
R. 910.1
S12

INDEX TO SACRAMENTO COUNTY DIRECTORY.

C18981

Arcade.....	Page 529
Alder Creek.....	529
Antelope.....	529
Arno.....	532
Brighton Junction.....	533
Broderick.....	534
Clay Station.....	534
Conley.....	536
Cosumne.....	537
Courtland.....	543
Elk Grove.....	546
Fair Oaks.....	554
Florin.....	557
Folsom.....	561
Franklin.....	571
Freeport.....	574
Galt.....	576
Guthrie's Station.....	582
Hicksville.....	582
Isleton.....	582
Mayhews.....	586
Michigan Bar.....	587
Mills.....	589
Monta Vista.....	589
Mormon Island.....	589
Natoma.....	589
Oak Park.....	590
Orange Vale.....	590
Orchard Switch.....	592
Paintersville.....	592
Perkins.....	593
Represa.....	596
Rio Vista.....	596
Routiers.....	596
Ryde.....	599
Salsbury.....	600
Sheldon.....	600
Soudan.....	600
Sunset Colonies.....	600
Trask Landing.....	600
Turners.....	600
Union House.....	600
Walnut Grove.....	602
Walsh's Station.....	605
Washington.....	605

N. CLARK & SONS 17 and 19 SPEAR ST. SAN FRANCISCO

MANUFACTURERS OF Architectural Terra Cotta and Fire Proofing

ARE YOU LOOKING FOR A
GO TO
HOTEL MODEL.

HOME-LIKE

PLACE FOR BOARD AND
ROOM?
S. W. cor. 8th and H Sts.

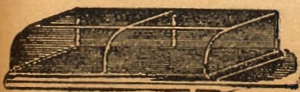
351109

C. 4

INDEX TO ADVERTISERS.

Aubertus A. M.	Top lines
Baumann H. N.	419
Blake, Moffitt & Towne	Front cover
California Art Glass Bending and Cutting Works	Back cover
California Business College	Top lines
California Nursery Co.	699
Capital Iron Works	150
Carlaw Bros	Top lines
Caselli A.	4
Coffin F. H.	167
Columbian Broom Factory	619
Dixon, Borgeson & Co.	Bottom lines
Drew Warren F.	150
Duchez J.	206
Eberhart Wm.	211
Elliott Bros.	670
Empire Broom Factory	620
Fireman's Fund Insurance Co.	Front cover
Flaherty Peter	2
Flohr C.	229
Golden State and Miners Iron Works	Bottom lines
Gruhler Jacob	Front cover
Hammam Baths	698
Harder Otto	269
Haubold Adam	275
Haycock W. H.	393 and 503
Heald's Business College	Backbone and opp. 320
Hill & Huxley	Top lines
Hoffman, Dahl & Co.	696
Hotel Model	Top lines
Ketchum E. J. C. Mrs.	4
Klein J. M. Electrical Works	Front cover
Kromer J.	Top lines
Le Favor J A.	620
Lewis Thomas	339
Lindley & Co.	Backbone
Lloyd H. J.	697
Martyr Robert	619
Mater Misericordiae Hospital	Opp. 356
May & Co.	Stencil edge
McLaughlin Trucking Co.	Front cover
McMorry P. F.	Bottom lines
Metropolitan, The	4

CITY LIBRARY
SACRAMENTO, CALIF.



DIXON, BORGESON & CO.
37 MARKET ST.
SAN FRANCISCO.

SHOW CASES

BLANK BOOK

MANUFACTURERS.

Silvius & Schoenbackler

423 J Street.

Moise L. H.....	699
New French Dyeing and Cleaning Works.....	206
Pealer M. A. Mrs.....	413
Petrocchi A.....	418
Philadelphia House.....	419
Queen Insurance Company of America... ..	Backbone
Quin Thos. & Son.....	430
Sacramento Collection Agency.....	Top lines
Sacramento Electric Gas and Ry. Co.....	Front cover
Sacramento Institute.....	3
Sacramento Typewriter Exchange.....	Top lines and 689
San Francisco Breweries Ltd.....	Front edge
Schmidt L and L Co.....	Bet. 660 and 661
Schnetzler J B.....	458
Silvius & Schoenbackler.....	Top edge and marginal lines
Smyth W. H.....	Front cover
Stein N.....	485
Tariel H. H.....	496
Terchert A.....	498
Windsor Hotel.....	2

NAMES RECEIVED TOO LATE FOR REGULAR INSERTION.

Brown Walter S. (Olson & Brown), r 1711 N

Fish Dora M. Miss, stenog L. T. Hatfield and notary 203 J,
r 1234 K

HOEN ERNEST M. Architect 718 J, r same

Olson & Brown (A. Olson and W. E. Brown), real estate and
ins 1015 4th

Olson Alfred (Olson & Brown), r 2322 Q

THIS BOOK WAS BOUND BY

Silvius & Schoenbackler

BOOK BINDERS

423 J St.