

**GOLDEN STATE**

COMPANY  
LTD.

214 19TH STREET

DEPENDABLE  
DAIRY PRODUCTS  
DIAL 2-4961

**ALWAYS  
ON TOP**  
1014 8th St.

**REAL ESTATE**  
**FRED W. SPEICH**  
Dial 3-9018 • 1014 8th St.

**REAL ESTATE  
INSURANCE**  
3-9018

Homes  
and  
Commercial  
Properties

**Watrous-McClary Co.**  
INSURANCE - REAL ESTATE  
*"Security with Service"*  
Since 1929

Every  
Form  
Of  
Protection

916 11th St.

Dial 3-2071

**INSURANCE—REAL ESTATE**

S. LINDROTH

S. JOHNSON



**BUILDING  
MATERIALS**

MAIN OFFICE  
37th and R Streets  
Telephone 5-2681

BRANCH YARD  
North 12th and 16th Sts.  
Telephone 2-1525

**MOSS & LUCAS, INC.**

**REALTORS**

REAL ESTATE - INSURANCE

915 8th St.

Phone 3-9087

**DEAN WITTER & CO.**

**Bonds—Stocks—Commodities**

Members

New York Stock Exchange - San Francisco Stock Exchange  
Chicago Board of Trade  
and other leading Exchanges

924 J Street

Sacramento

Phone 3-1991

San Francisco - Stockton - Los Angeles - Oakland - Fresno - Long Beach - Pasadena  
Westwood - Beverly Hills - Honolulu, T.H.

**REAL ESTATE  
AND  
INSURANCE**

**JONES & BRAND  
HULLIN, INC.**

**725 J STREET  
TEL. 2-8691**



# CROCKER'S

• 1201 K STREET •



- STATIONERY
- GIFTS
- GREETING CARDS
- OFFICE SUPPLIES
- OFFICE FURNITURE
- FOUNTAIN PENS
- PRINTING
- ENGRAVING
- LITHOGRAPHY

There are always new things of interest at Crocker's and you are welcome here.

## CALIFORNIA'S OLDEST STATIONERY STORE

A Sacramento Institution  
Since 1856 --  
"Built with  
Dependable  
Merchandise  
Reasonably  
Priced for All"



# Alhambra Laundry and Fotos Linen Supply

DAN FOTOS, Proprietor



## WE RENT AND SUPPLY TO

Physicians, Dentists, Nurses, Drug Stores, Beauty Shops,  
Barber Shops, Restaurants, Bars, Butcher Shops,  
Garages

All Kinds of Gowns, Coats, Uniforms and Towels,  
White and Colored

Barber Towels  
Massage Towels  
Manicure Towels  
Hand Towels  
Bath Towels  
Individual Towels  
Glass Towels  
Dish Towels  
Hair Cloths  
Table Cloths

Table Tops  
Napkins  
Mops  
Coveralls  
Tea Aprons  
Musicians' Coats  
Musicians' Sashes  
Head Bands  
(white and colored)  
Bartenders' Coats

Waiters' Coats  
Cooks' Coats  
Waitresses' Dresses  
Smocks  
Pants  
Shirts  
Vests  
Caps  
Aprons  
(Bib and Bar)

**Clothes Cleaning, Dyeing and Pressing**



YOUR PHONE CAN REACH US IN A MINUTE

**2112-2114 Alhambra Blvd.**

**Phone 5-2617**

**Residence Phone  
5-8712**

# CITIZENS MORTUARY

ROBERT K. TITUS, Director

*"A Service to the Living"*



2301 J Street

SACRAMENTO

Dial 2-2969



SACRAMENTO DIRECTORY CO'S  
**SACRAMENTO**  
**CITY**  
**DIRECTORY**  
**1947**

**INCLUDING NORTH SACRAMENTO, WEST  
 SACRAMENTO AND BRODERICK**

Containing an Alphabetical List of Business Firms and  
 Private Citizens, a Revised Street and Avenue  
 Householders Guide and Much Information  
 of a Miscellaneous Character, also a

**"BUYERS' GUIDE"**

**AND A COMPLETE**

**CLASSIFIED BUSINESS DIRECTORY**

**For Detailed Contents See General Index**



**SACRAMENTO DIRECTORY CO., Publishers**

**423 J STREET**

**Directory Library for Limited Free Use of Public at 828 I Street, cor. 9th**

Member Association of North American Directory Publishers

---

COPYRIGHT, 1947, BY SACRAMENTO DIRECTORY CO.



# GENERAL INDEX

	Page
Abbreviations .....	20
Alphabetical List of Names.....	21
Broderick Alphabetical List of Names.....	See Sacramento
Buyers' Guide.....	Opposite Page 1088
City Government .....	655
Classified Business Directory.....	1089
County Government .....	656
Firm Abbreviations .....	19
Householders .....	845
Introduction .....	11
North Sacramento Alphabetical List of Names.....	See Sacramento
State Offices and Officers.....	720
Statistical Review .....	13
Street and Avenue Guide.....	845
United States Offices and Officers.....	242
West Sacramento Alphabetical List of Names.....	See Sacramento



# INDEX TO ADVERTISERS

(Page numbers below refer to Buyers' Guide opposite page 1088)

	Page
Acme Refrigeration & Equipment Co.....	left top lines and 115
Acme Transfer & Storage Co.....	Classified Tab Insert
Ahl Frank Z Sheet Metal Works.....	back cover, 48 and 117
Alderson Realty Service.....	111
Alhambra Laundry & Fotos Linen Supply.....	top edge and B
Almar & Marfoto Photographers.....	right side lines and 83
American Trust Co.....	right top lines and 17
Arco Realty Co.....	right top corner cards and 101
Argonaut Liquor Co.....	73
Armstrong Wm Realty.....	right bottom lines
Artz & Cook.....	right top lines, 59 and 91
Associated Underwriters.....	left side lines and 63
Baker & Busey.....	right top corner cards and 101
Bank of America National Trust & Savings Assn.....	left top lines and 18
Benjamin Eugene & Co.....	left side lines and 84
Bloomberg Realty Co.....	left top corner cards
Boone's Transfer & Storage Co.....	right side lines and 80
Borden's Capital Dairy Co.....	right side lines and 34
Bowman's.....	left bottom lines and 14
Boyd E A Co.....	right side lines and 8
Braddock's Shoe Store.....	118
Breuner John Co.....	left side lines, right bottom lines and 49
Bronson John O Co.....	right top corner cards
Bryant Motor Co.....	left side lines and 8
Burnett & Sons.....	left side lines and 84
Bush Realty Co.....	left side lines and 106
Bush Roofing Co.....	right side lines and 115
Business Men's Assurance Co.....	backbone
Butler Jack C.....	63
Butler Walter E.....	left side lines and 102
California Engineering Co.....	31
California Manufacturing Co.....	right top corner cards
California-Western States Life Insurance Co.....	left side lines and 61
Capital City Title Co.....	backbone, right side lines and 124
Capital Federal Savings & Loan Assn.....	116
Capital Investigation Bureau.....	39
Capital Lumber Co.....	front cover and 75
Capital National Bank.....	right top lines
Capital Parcel Delivery Co.....	right side lines and 82
Capital Realty Co.....	111
Capitol Chevrolet Co.....	left top lines and 9
Capitol Florist.....	left side lines and 43
Carlaw Bros.....	right top corner cards and 78
Carmody Wm P.....	left top corner cards and 102
Carnie-Goodwin-Pendleton Co.....	left bottom lines and 16
Chandler Hugh D.....	57
Chilton F R.....	left top corner cards
Cippa & Nicoletti.....	45
Citizens Bank of Sacramento.....	20
Citizens Mortuary Co.....	back cover, left bottom lines, C and 44
Clark, Booth & Yardley.....	47
Clauss & Kraus.....	left side lines and 78
Club Taxi Co.....	left side lines and 122
Cookson Co.....	112
Cordano James J Co.....	left side lines and 112
Crocker H S Co.....	A and 86
Crystal Cream & Butter Co.....	33
Cuneo Motors.....	left side lines and 9
Daggett Funeral Home.....	right side lines and 47
Dallman Supply Co.....	86
Dana Motors.....	right bottom lines and 5
Daniels Jewelers.....	68
Dean Witter & Co.....	front cover, right bottom lines and 21
Diamond Match Co.....	left top lines and 76
Dolan Building Materials Co.....	bottom edge and 74
Dome Engraving Co.....	left side lines, 33 and 42
Drew N B Realty Co.....	right top corner cards, 64 and 112
Dunphy Walter M.....	118
Dupen Air Services.....	right top corner cards and 3
East Lawn Inc.....	left top lines and 25
Eastern.....	back cover and left bottom lines
Edises, Jewelers.....	right top corner cards and 65



# INDEX TO ADVERTISERS—Contd.

	Page
Elkus Albert .....	28
Elliott & Huston.....	103
Felton Donald M.....	2
Ferguson D F Co.....	64
Fidelity Title Insurance Co.....	Alphabetical Tab Insert, left side lines and 125
Finley Realty Co.....	left top corner cards and 103
Forsch Bros Electric.....	left top corner cards and 40
Fort Sutter Insurance Agency.....	left top lines and 61
Foster & Kleiser Co.....	right top corner cards and 2
Foulks Motor Co.....	left side lines and 10
Friend & Terry Lumber Co.....	right side lines and 77
Fuller W P & Co.....	left bottom lines and 81
Globe Transfer & Warehouse Co.....	front edge and 121
Golden State Co.....	front cover and 35
Goodwill Industries.....	right bottom lines and 4
Gormley W F & Sons.....	left top lines and 45
Grebitus Edwin A.....	left top lines and 68
Greyhound Taxi Co.....	left bottom lines and 122
H & C Taxi Co.....	left bottom lines and 122
Haggin Gravel Co.....	32
Hale Bros.....	left bottom lines, right side lines and 36
Harger H T Co.....	left side lines and 68
Harrison Co.....	112
Healds Business College.....	left top corner cards and 24
Heeseman Inc.....	left bottom lines, right side lines and 27
Henry's Collection Co.....	right bottom lines and 29
Heringer Larry.....	left top corner cards and 113
Hertel Ralph.....	113
Hickman-Coleman Co.....	right bottom lines and 113
Holland Harvey H.....	left side lines and 85
Hotel Lenhart.....	54
Hotel Sacramento.....	55
Hoyt's Doughnut Shops.....	back cover, left bottom lines and 39
Jacobs J J Motor Co.....	10
Jones & Brand & Hullin.....	front cover, right bottom lines and 92
Joseph Manuel.....	back cover and 41
Katzenstein C L & Co.....	left bottom lines and 62
Kauffman David D & Co.....	right top corner cards and 104
Kay Jewelers.....	right top lines and 67
Keating James P Co.....	right top corner cards and 74
Klein Realty Service.....	right bottom lines and 113
Klumpp Geo L.....	right top lines and 46
Knox Lumber Co.....	left top corner cards and 74
Lagomarsino F & Sons.....	117
Lamb's Electric Co.....	right side lines and 41
Lamus-Lundlee Co.....	11
Lavensons Inc.....	left bottom lines, right top lines and 119
Leachman Boyd Auction Co.....	4
Leonard Len Realty.....	right top corner cards and 104
Leonard W B O.D.....	A B C Cards and 81
Lester Motors Inc.....	11
Lewis' Women's Apparel.....	28
Lundstrom Motors.....	12
Luppen & Hawley.....	right side lines and 85
Lyons Edson R.....	right top corner cards and 93
MacBride Realty Co.....	105
Marcus Auto Supply Co.....	left side lines and 14
Martin Ray Motor Co.....	left side lines and 12
Martyrs'.....	left top corner cards and 120
McAnear & Sherman.....	right side lines and 105
McClatchy Realty Co.....	left bottom lines and 114
McGee & Thielen.....	right side lines
McIntyre Francis A.....	84
McMahon & Ford.....	94
McNabb W J & Son.....	right side lines and 79
Merchants National Bank.....	right side lines and 19
Midway Auto Wreckers.....	left side lines and 16
Miller Automobile Co.....	6
Miller & Skelton.....	left top corner cards and 46
Monk Tom B Co.....	left top lines and 67
Morrissey Co.....	right top lines and 106
Morrissey Marc T Inc.....	left side lines and 62
Moss & Lucas.....	front cover, right top lines, 64 and 95



## INDEX TO ADVERTISERS—Contd.

	Page
Mott Clifford A.....	64
Munz Bros.....	right side lines and 89
National Ice & Cold Storage Co.....	left top lines and 57
National Mercantile Agency.....	right bottom lines and 30
Natomas Co.....	107
Nauman Harry A & Son.....	right bottom lines and 47
News Publishing Co.....	right side lines and 87
Newsom & Gee.....	right side lines and 107
Noack Guido H—Jeweler.....	left top corner cards and 68
Normans Friendly Credit Jewelers.....	69
North Sacramento Builders Exchange.....	33
North Sacramento Land Co.....	left side lines and 108
Nunneley Realty.....	left side lines 51
Pacific Gas & Electric Co.....	70
Palace Laundry.....	15
Parell & Fries.....	88
Parker Pump Co.....	23
Parsons Bros.....	left top corner cards and 31
Pease Conservatory of Music.....	right bottom lines and 39
Penney J C Co.....	right side lines 32
Petzwal Radio & Manufacturing Co.....	left side lines and 40
Reeves John R.....	left top corner cards and 43
Reliable Electric Works.....	90
Relles Ross Florist.....	78
Robinson Richard O Jr.....	right top lines, right side lines and 126
Rowe Ralph R.....	42
Sacramento Abstract & Title Co.....	left bottom lines and 71
Sacramento Electric Co.....	23
Sacramento Golden State Laundry.....	left top lines and 80
Sacramento Pumice Brick & Tile Co.....	right top corner cards and 2
Sacramento Union.....	left top lines and 37
Sayre Edgar A Jr.....	56
Sears Roebuck & Co.....	left top corner cards and 96
Senator Hotel.....	left bottom lines and 82
Sexton Coen V.....	left top lines and 66
Sherwin-Williams Co.....	left side lines and 15
Silver's Jewelers.....	left side lines and 108
Smith Earl Motors.....	front cover, right top lines, 60 and 97
Southside Realty Co.....	13
Speich Fred W.....	left top lines and 98
Spickard Automobile Co.....	right top lines and 50
Spilman-Callister Co.....	right top lines and 50
Standard Furniture Co.....	right side lines and 73
Star Furniture Co.....	15
Steen's Place.....	right side lines 117
Stevens Motor Sales.....	right top corner cards and 117
Stranahan Irvin G.....	right bottom lines and 3
Strutz School of Watchmaking & Engraving.....	back cover, right top lines and 127
Superior Ambulance Service.....	22
Sutton-Morf Tractor Co.....	109
Teichert A & Son.....	53
Telesco J E.....	right side lines 109
Thomson-Diggs Co.....	right bottom lines and 109
Throne A E Paint Store.....	right side lines and 7
Trainor & Cavanaugh Realty Co.....	left side lines and 122
Transport Motor Co.....	114
Union Taxi Co.....	left bottom lines and 13
Vernon Richard J.....	left side lines and 4
Vogel Chevrolet Co.....	99
Volunteers of America.....	front cover, right top lines, 63 and 110
Waters & Neideffer.....	128
Watrous-McClory Co.....	left bottom lines and 52
Weaver Tractor Co.....	left top lines, right top lines and 38
Weideman's.....	right bottom lines and 110
Weinstock, Lubin & Co.....	left top corner cards and 14
West Sacramento Land Co.....	right top lines and 111
Western Motors.....	right side lines and 123
Williams & Williams.....	left top corner cards and 26
Wing Taxi Service.....	right top lines and 100
Woodard D R Cleaner & Dyer.....	back cover, left top lines and 58
Wright & Kimbrough.....	
Yancey Co.....	



# INTRODUCTION

**T**HE SACRAMENTO DIRECTORY CO., publisher of the Sacramento City Directory, presents to subscribers and the general public, this, the 1947 edition of the Sacramento City Directory, which also includes North Sacramento, West Sacramento and Broderick.

Confidence in the growth of Sacramento's wealth, industry and population, and in the advancement of its municipal and social activities, will be created as sections of this directory are consulted; for the directory is a mirror truly reflecting Sacramento to the world.

The enviable place occupied by these directories in offices, stores, libraries and homes throughout the country, has been established by rendering the best in directory service. With an unrivaled organization, having the courteous and hearty cooperation of the business and professional men and residents, the publishers feel that the result of their labors will meet with the approval of every user, and that the Sacramento Directory will fulfill its mission as a source of authentic information pertaining to the city.

## Population

The estimated population of Sacramento is 119,984, based on the number of individuals' names in the alphabetical section of the directory, with due allowance for children and for women whose names are not listed separately from those of their husbands. Territory immediately adjacent, which is part of the city, as far as business and social life are concerned, is included in the directory.



## Four Major Departments

THE ALPHABETICAL LIST OF NAMES of residents, business firms and corporations is included in pages 21 to 844, on white paper.

DIRECTORY OF HOUSEHOLDERS, TENANTS OF OFFICE BUILDINGS AND OTHER BUSINESS PLACES, AND STREET AND AVENUE GUIDE covers pages 845 to 1088, on pink paper. In this section the names of the streets and avenues are arranged in alphabetical order; the residences and business houses are arranged numerically under the name of each street and avenue, and the names of householders and business concerns are placed opposite the numbers. Home property ownership is indicated by the character ®, placed immediately after the name of the householder and telephone is indicated by the character 4 placed immediately before the name.

THE BUYERS' GUIDE, beginning opposite page 1088, and separately paged from 1 to 128, on goldenrod paper, contains the advertisements of leading manufacturing, business and professional interests in Sacramento. These pages will be found particularly interesting and instructive to substantial purchasing factors. The advertisements have been carefully grouped by departments and are indexed under headings descriptive of the business represented. This is reference advertising at its best and, as such, merits a survey by all buyers keen to familiarize themselves with sources of supply. The city's activities, in many phases, are authentically pictured. In an ambitious and progressive community like Sacramento the necessity of having this kind of information immediately available is very great, and frequently pressing. General appreciation of this fact is evidenced by the liberal support the city directory enjoys in the many fields which it serves.

THE CLASSIFIED BUSINESS DIRECTORY is included in pages 1089 to 1176, on white paper. This department lists various manufacturing, mercantile and professional interests in alphabetical order under appropriate headings. This feature constitutes an invaluable and indispensable epitome of the business interests of the community. "The directory is the common intermediary between Buyer and Seller." As such it plays no small part in the daily doings of the business world. "More goods are bought and sold through the Classified Business Directory than through any other medium."

## Municipal Publicity

The directory reflects the achievements and ambitions of the city, depicting in truthful terms what it has to offer as a place of residence, as a business location, as an industrial site and as an educational center. To broadcast this information, the publishers have placed copies of this issue of the directory in Directory Libraries, where they are readily available for free public reference and serve as perpetual and reliable advertisements of Sacramento, for business men everywhere realize that the city directory represents a community as it really is.

## The Sacramento Directory Library

Through the courtesy of the publishers of the Sacramento City Directory, a Directory Library is maintained at the offices at 828 I Street, corner 9th, for free reference by the general public. This library is one of a system of more than 500, installed and operated in the chief cities of the U. S. and Canada, under the supervision of the Association of North American Directory Publishers, of which The Sacramento Directory Co. is a member.

The publishers appreciatively acknowledge the recognition by those progressive business and professional men who have demonstrated their confidence in the city directory as an advertising medium, with assurance that it will bring a commensurate return.

**SACRAMENTO DIRECTORY CO.**



# Sacramento Statistical Review

---

Name of City—Sacramento.

Slogan or sub-phrase—"Heart of California."

Form of Government—City Manager-Council.

How Incorporated—City.

Population—1940 U. S. Census report, 105,958; January 1, 1946, 119,984.

Area—14.5 square miles.

Altitude—30 feet above sea level.

Climate—Mean annual temperature, 60.3 degrees F.; average annual rainfall (or precipitation), 18.02 inches (50 yr. average).

Parks number 25, with total acreage of 1260, valued at \$2,182,159.10.

Assessed valuation—\$136,947,670.00, with \$2.04 per \$100.00 tax rate.

Bonded Debt—\$7,867,210.00, Dec. 31, 1946.

Financial Institutions—9 banks, with debits of \$3,948,032,000 for the year 1946; 10 savings banks, with total savings deposits of \$140,443,703.00 on December 31, 1946; 6 building and loan associations.

Postal Receipts—\$2,124,703.59 for the year ending December 31, 1946.

Churches number 93, representing 21 denominations.

Building and Construction—Building permits valued at \$12,509,598.00 in 1946.

Industry—Chief industries of the city and surrounding territory, manufacturing, agriculture, transportation, distribution and trading center. Number of manufacturing establishments 470, employing 15,845 (including seasonal workers) men and women, paying wages of \$13,711,305 annually. Principal manufactured products: Fruit and vegetable canning, railroad manufacturing and repair shops, slaughtering and meat packing, rice cleaning and polishing, sheet metal and tin cans, flour and mill feeds, almond shelling, printing and bookbinding.

Trade Area—Retail area has radius of 100 miles, and population of 500,000. Wholesale area has radius of 370 miles, and population of 2,000,000.

Newspapers—Daily, 3; daily and Sunday, 1; weekly, 5.

Hotels number 124, with total of 7985 rooms. Newest hotel opened in 1929.

Railroads—City served by 4 railroads, as follows: Southern Pacific, Western Pacific, Sacramento Northern, Central California Traction Co.

Highways—The following highways run through the city: U. S. 40, U. S. 50, U. S. 99.

Airports number 8—Municipal, U. S. Army repair depot and supply base, Mather Field, and five private airports.

Amusements—Largest auditorium (municipal) in city seats 5000 persons. 23 moving-picture theatres, with total seating capacity of 21,104 persons. Number of golf courses in, or near, the city, 3.

Hospitals number 7 (including 2 emergency), with total of 1055 beds.

Education—Number of public schools 31, including 1 junior college, 2 senior high schools and 7 junior high schools. Number of parochial schools, 8. Number of pupils in public schools, 26,287. Number of teachers in public schools, 969. Value of public school property, \$10,959,560.

Public Libraries—(number, including branches) 6, with total of 742,252 volumes.

City Statistics—Total street mileage 262, all paved and none under construction. Miles of gas mains, 340; of sewers (sanitary) 288; of bus and electric street railways, 50. Number of water services, 35,842; electric meters, 39,331; gas meters, 36,909. Capacity of water works (municipal), 64,000,000 gallons, with daily average pump of 25,600,000 gallons, 296.51 miles of mains, and plant valued at \$3,588,461. Fire department has 191 paid men, with 9 autos, 2 utility cars, 1 squad wagon, 5 water wagons, 3 trucks, 3 hose wagons, 10 engines, 10 station houses and 1 Central Fire Alarm Station. Value of fire department real estate and equipment, \$722,889.54. Police department has 159 members, 26 civilian employees, with 1 station and 37 pieces of motor equipment, all radio equipped. Value of police department real estate and equipment, \$301,080.19.



# SACRAMENTO FACTS AND HISTORY

## AGRICULTURAL

Sacramento Region produces 35% of the total value of agricultural products in the State of California.

## INDUSTRIAL

Number of manufacturing plants.....	470
Wage earners (including seasonal workers).....	15,845
Payroll .....	\$13,711,305

## LOCATION

Geographic and economic distribution center of the Sacramento Region, composed of twenty-one counties possessing over fifty per cent of the water resources of the State of California; rich agricultural lands and diversified industrial resources including precious and industrial mineral deposits, lumber and hydro-electric power.

## RAW MATERIALS

Center of great producing area including the widest diversification of resources in the State.

## TRANSPORTATION

Three transcontinental railroads. Two interurban electric lines. Sacramento River steamers, operating daily to San Francisco. Nine motor stage lines. Motor truck lines operate in all directions out of Sacramento.

## POWER

Abundance of electric power at low rates.

## WATER

Excellent municipal water supply in abundance at exceptionally low rates.

## AVAILABLE SITES

Excellent locations on rail and water or both, available at reasonable cost.

## MUNICIPAL CONDITIONS

Conservative tax rates, excellent housing conditions, progressive city government providing ample facilities for industrial expansion.

## LABOR

Largest labor market west of Chicago with excellent relations prevailing.

## OPPORTUNITY

A sound, prosperous, expanding section of California with increasing markets.

# The Sacramento Chamber of Commerce

Is at your service for further information



# SACRAMENTO



STATE CAPITOL BUILDING



**S**ACRAMENTO, the "Heart of California" and the capital city of the state, is located at the confluence of the Sacramento and American rivers, in the center of the greatest agricultural, mineral and timber producing area of California. With a background of history closely entwined with some of the great epochal events in the civilization and development of the Pacific Coast, Sacramento through her years of civic and commercial progress has maintained leadership among the cities of the West. It is now the largest interior city in California and one of the most rapidly growing cities in America.

Sacramento has graduated from the class of the ordinary capital city to a thrifty metropolis of 119,984 on January 1, 1946.

The westward movement of population has found Sacramento one of the beautiful cities of the Golden State, a comfortable and prosperous community in which to live.

The city is built on a level plain with an incorporated area of fourteen and one-half square miles. The climate is semi-tropic, with an average mean annual temperature of 60.3 degrees, and an annual average rainfall of 18.02 inches (U. S. Weather Bureau 50-year record).

Sacramento's most notable beauty is in its wide tree-lined streets and its 1260 acres of municipal parks. No city in the West equals this city in number of street trees, cared for and protected by the city government.

Sacramento is the home of the annual California State Fair, the largest and most successful exposition of its kind in the United States. Attendance, 748,393 in 1941.

Notable among the historic points of interest are Sutter's Fort, now entirely restored to its original form, and maintained as a state museum, housing a priceless exhibit of relics of pioneer days; Crocker Art Gallery, one of the most valuable art collections in the West; and the \$13,500,000 group of Capital buildings, surrounded by a 40-acre state park world-famed for its beauty and the more than one thousand varieties of trees, shrubs and flowers gathered from every country on the globe.

Sacramento's school system is recognized as one of the best in the state, noted for its educational progress, with a \$1,500,000 high school, another new \$765,000 high school, and a \$1,121,000 Junior College typical of its outstanding excellence. A splendid stadium, costing \$175,000 and seating 23,000 persons, was erected on the Junior College campus in 1928. In 1932 the city of Sacramento voted \$1,146,000 in bonds for the construction of three new Junior High School buildings. Since 1932, \$273,300 has been expended on the Elementary Schools for additions and improvements, \$509,600 on the Junior College, and \$267,150 on the Senior High Schools.

Sacramento's Junior College ranks in point of attendance as the third largest Junior College in California. Enrollment for the 1945-46 term was 2,121, with 58 teachers on the staff. The college, which has grown from an infant in 1926 with an initial enrollment of 45, is housed in a group of beautiful buildings on a 61-acre campus, representing an investment of bond money totaling \$1,365,000.

The beauty of its residential sections, modern public and business buildings, beautiful churches and splendid hospitals add to its attractiveness as a home city.

Sacramento's million dollar Memorial Auditorium, splendid hotel and restaurant accommodations and its metropolitan theatres have made it an outstanding convention center, exceeded in numbers of state and national convention gatherings only by Los Angeles and San Francisco.

Most remarkable of any feature of its development has been Sacramento's industrial growth. The War Department's Repair Depot and Supply Base for the West Coast Air Corps, and the Army Signal Corps Supply Base represent two recent governmental additions to the area. The million-dollar plant of Campbell Soup Company, the new plant of Freuhauf Trailer Company, construction of one new fruit and vegetable cannery and one new can manufacturing plant plus the proposed construction of another cannery and can manufacturing plant, a new slipper manufacturing plant, and many others marks Sacramento as the "Hub of Western Industry."

The Southern Pacific shops in Sacramento are the second largest in the world. The Western Pacific has its main shops in Sacramento and spent \$500,000 in new shop facilities in 1938.

The principal industry is that of canning fresh fruits and vegetables, Sacramento's four canneries being among the largest in California, and one of them the largest institution of its kind in the world. The six canneries in Sacramento produce annually 11.64% of the total output of the canneries of California. The largest freezing plant for the "Frozen Food Industry" in California is located at Sacramento. Fresh fruits, vegetables, poultry, etc., are frozen here. The plant of the American Can Company is the largest and most modern of the can factories operated by that national concern, emphasizing Sacramento's position as the canning center of the state.

Sacramento has the largest almond shelling plant in the world, and more than fifty per cent of the state's total almond output is handled here.



Flour and feed mills, slaughtering and meat-packing houses, rice mills, bean cleaners, clay, pipe and pottery works, lumber and box factories and similar institutions convert into manufactured products other raw material provided by the vast agricultural, timber and mineral wealth of the region.

Sacramento County is most fortunately situated with regard to transportation. Two great transcontinental railroad systems, the Southern Pacific and Western Pacific, offer quick transportation to Eastern markets. Two interurban electric lines, the Sacramento Northern Railway and Central California Traction, supplement the steam roads.

The Sacramento River, ranking among the foremost in the nation in amount of tonnage carried and second in per ton value of cargo, offers rapid and cheap water transportation to San Francisco Bay and world markets.

Paved county highways supplement the main trunk lines of the great state highway system to every important center in the county, and stage lines radiate in every direction.

Transcontinental and coastwise air mail, express, passenger and freight lines center at Sacramento's Municipal Airport.

Sacramento is the banking center of interior California, served by ten strong banking institutions.

## HISTORY

**H**ISTORICALLY, Sacramento is associated with three great epochal events in California's development. The settlement established August 12, 1839, by Capt. John A. Sutter at Sutter's Fort, now Sacramento, was the first settlement of white men in interior California, and marked the beginning of agricultural development that has made California third among the states of the Union in total value of its agricultural products.

The discovery of gold January 24, 1848, by James W. Marshall, one of Sutter's men, at Coloma, sixty miles east of the city, brought about the great gold rush of '49 and '50 which so quickly populated the state that it was admitted to full-fledged statehood September 9, 1850.

The transcontinental railroad started from Sacramento in 1863 and completed in 1869 (the old Central Pacific, now Southern Pacific) was the first to link the West to the East with bands of steel, and from the viewpoint of lasting benefits, overshadows even Marshall's discovery.

Sacramento was incorporated in 1849 and chosen as Capital of California in 1854.

## SACRAMENTO COUNTY FARM FACTS

**T**HE census of 1910 gave Sacramento County 1,601 individual farms. In 1940 the number had grown to 3,456. This was an increase of 116% for the 30-year period, 1910-1940. Interest in small family sized farms continues and the number of farms in operation now will show a substantial increase over 1940.

Sacramento County produces, successfully and in large quantities, more than twenty varieties of fruits and nuts, and every known American vegetable. Some crop is in harvest every month of the year.

The following table shows the acreage planted to leading fruits and nuts in 1946: Almonds, 2,197; apples, 63; apricots, 300; cherries, 500; citrus, 600; figs, 172; grapes, 7,000; olives, 1,824; peaches, 900; pears, 4,000; persimmons, 18; plums, 800; prunes, 2,000; walnuts, 950.

Acreage of leading vegetables in 1946 was: asparagus, 5,000; green beans, 200; dry beans, 9,000; sugar beets, 8,000; cabbage, 250; cantaloupes and watermelons, 50; carrots, 250; cauliflower, 150; celery, 100; cucumbers, 800; lettuce, 150; onions, 400; peas, 1,200; spinach, 1,700; strawberries, 350; tomatoes, 15,000; potatoes, 50; vegetable seed, 1,500. In addition to vegetables, there are: 73,000 acres in grain, 2,500 in hops and 31,000 in alfalfa and irrigated pastures.

The total estimated gross returns from agriculture in Sacramento County for the year 1945 was \$37,141,500. Of this total 27.81% (\$10,328,000) was realized from Field Crops; Fruit, Nuts and Berries accounted for 26.88% (\$9,984,750); Vegetables and Seed represented 18.66% (\$6,928,000); Dairy and Livestock 17.50% (\$6,500,000); and the balance, or 9.15% (\$3,400,000) from Poultry, Turkey, and Eggs.

One of California's best opportunities for successful and profitable orange production is offered in the beautiful foothill "thermal belt" which forms the eastern part of Sacramento County, embracing the districts of Fair Oaks, Orangevale, Citrus Heights, Carmichael, Arcade and Folsom. Oranges have been grown for almost forty years in this section, to prove beyond question the adaptability of its soil and climate.

The production of eggs and dairy products has placed Sacramento among the leading counties in California.

The region of which Sacramento is the metropolis and trading center—the twenty-one counties of Northern California—east of the Coast Range—produces 35% of California's total agricultural yield; 75% of its precious and structural mineral products; and has 9,000,000 of the 14,000,000 acres of virgin timber still standing.



## UNEQUALLED DIVERSIFICATION

Sacramento County, according to County Horticultural Commissioner A. E. Morrison, is the most diversified in its products of any county in California. This remarkable diversification is what makes for stable and year round prosperity.

Coupled with rich soil, ample water and intensive farming methods, this diversity places Sacramento County in a place of conspicuous leadership among the high producing counties of California.

Sacramento County is the third largest poultry producing center in California. It offers ideal conditions for dairying and livestock production.

Land prices, available markets and ideal conditions assure success to the man who knows how and will farm right.

## THE SACRAMENTO CHAMBER OF COMMERCE

This organization is the active representative of the commercial, industrial, financial and civic interests of Sacramento in promoting its welfare and prosperity. The Chamber is completely departmentalized, with Industrial, Transportation, Agricultural, Tourist and Resort, Exhibit and Publicity departments, under experienced managers, set up for the purpose of supplying complete and authentic information on matters relating to Sacramento and Northern California. Arthur S. Dudley is Secretary-Manager. The Chamber occupies its own building at 917 Seventh Street.

## BOOKLETS FOR FREE DISTRIBUTION

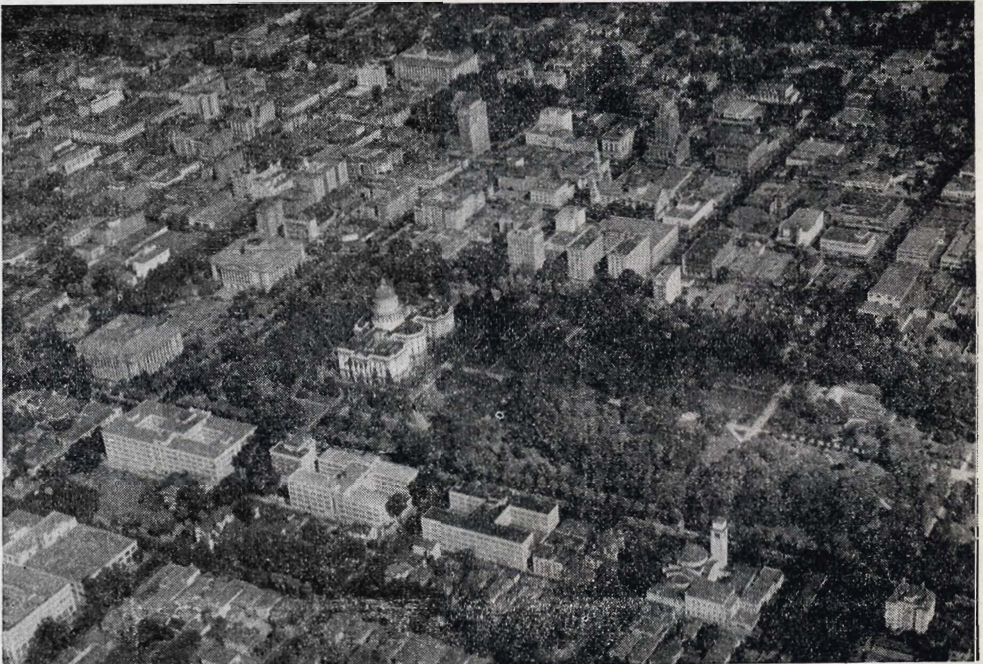
For additional detailed information call on the Chamber of Commerce for the following booklets:

"The Key to Sacramento"

"Map of Sacramento City"

"Sacramento Business Thermometer"

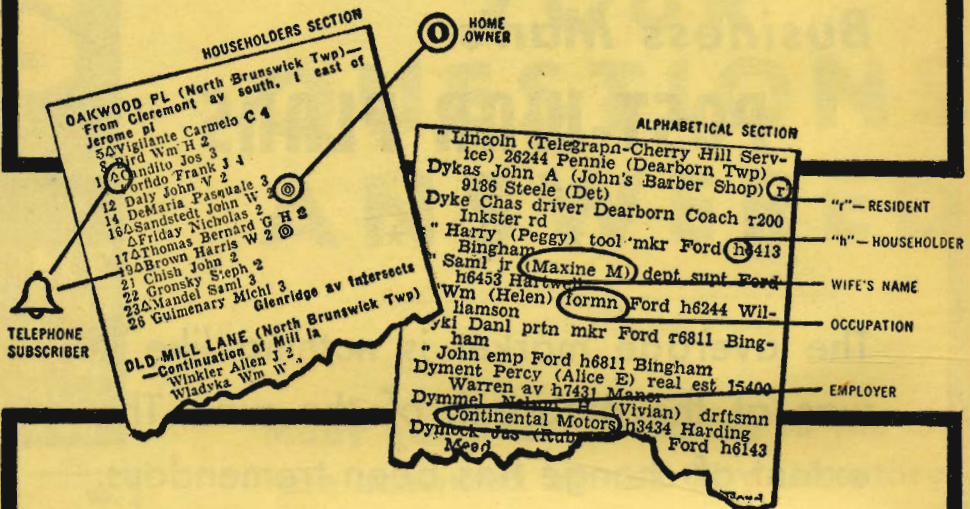
"To the Man Who Wants to Keep Happily Active"



AERIAL VIEW OF STATE CAPITOL



# DIRECTORY SYMBOLS AND DESIGNATIONS



**I**N ADDITION to names and addresses, your City Directory contains much detailed information concerning the people of your community. In order to list this information certain symbols and designations have been developed which enable important statistics to be compressed into the smallest possible space. You will receive far greater benefits from your City Directory if you familiarize yourself with the symbols and what they stand for.

In checking credit applications, in conducting direct mail advertising programs, in planning sales campaigns, in building prospect lines, and in scores of other ways your City Directory will prove of invaluable assistance.

**KNOW YOUR DIRECTORY SYMBOLS**