

**GOLDEN STATE COMPANY • DEPENDABLE DAIRY PRODUCTS**  
 LTD. 214 19TH STREET DIAL 2-4961

**THE NATIONAL MERCANTILE AGENCY COLLECTIONS** 403 Nicolaus Bldg. Tel. 3-3704

LIFE  
 ACCIDENT  
 AUTOMOBILE  
 COMPENSATION  
 HOSPITALIZATION  
 LIABILITY  
 BURGLARY  
 PLATE GLASS  
 BONDS  
 FIRE

**EVERY FORM OF PROTECTION**

*Watrous-McClory Co*  
**INSURANCE**  
*"Security with Service"*

916 11th (bet. I and J)

FHA and AUTO LOANS

Phone 3-2071

S. LINDROTH

Lumber  
 Lath  
 Shingles  
 Roofing  
 Hardware  
 Cement



S. JOHNSON

Shakes  
 Posts  
 Paint  
 Insulation  
 Board  
 Plaster Board  
 Plaster

**BUILDING MATERIALS**

NO ORDER TOO LARGE OR TOO SMALL

**at Prices That Will Please You**

WE DELIVER

MAIN OFFICE

37th and R Streets  
 Telephone 5-2681

BRANCH YARD

North 12th and 16th Sts.  
 Telephone 2-1525

**DEAN WITTER & CO**

**Bonds - Stocks - Commodities**

Members

New York Stock Exchange - San Francisco Stock Exchange  
 Chicago Board of Trade  
 and other leading Exchanges

924 J Street

Sacramento

Phone 3-1991

San Francisco - Stockton - Los Angeles - Oakland - Fresno - Long Beach - Pasadena  
 Westwood - Beverly Hills - Honolulu, T.H.

**REAL ESTATE**  
 AND  
**INSURANCE**



**803 J STREET**  
**TEL. 2-8961**

# CROCKER'S

923 K STREET

- STATIONERY • GIFTS • GREETING CARDS • FOUNTAIN PENS
- OFFICE FURNITURE & EQUIPMENT • MIMEOGRAPHS
- PRINTING • LITHOGRAPHY



1856,  
SACRAMENTO  
POPULATION 9000

SINCE 1856  
WITH SACRA-  
MENTO'S  
DIRECTORY OF  
A FEW PAGES  
TO THIS BIG  
VOLUME OF  
THIS GREAT  
MODERN CITY.  
H. S. CROCKER  
COMPANY, Inc.  
HAS BEEN  
IN SERVICE  
TO ALL  
WITH

**"Nothing But  
the Best  
Reasonably  
Priced."**

• THERE'S ALWAYS NEW THINGS OF INTEREST AT CROCKER'S.  
YOU'RE ALWAYS WELCOME HERE.

# Alhambra Laundry and Fotos Linen Supply

DAN FOTOS, Proprietor

## WE RENT AND SUPPLY TO

Physicians, Dentists, Nurses, Drug Stores, Beauty Shops,  
Barber Shops, Restaurants, Bars, Butcher Shops,  
Garages

All Kinds of Gowns, Coats, Uniforms and Towels,  
White and Colored

Barber Towels  
Massage Towels  
Manicure Towels  
Hand Towels  
Bath Towels  
Individual Towels  
Glass Towels  
Dish Towels  
Hair Cloths  
Table Cloths

Table Tops  
Napkins  
Mops  
Coveralls  
Tea Aprons  
Musicians' Coats  
Musicians' Sashes  
Head Bands  
(white and colored)  
Bartenders' Coats

Waiters' Coats  
Cooks' Coats  
Waitresses' Dresses  
Smocks  
Pants  
Shirts  
Vests  
Caps  
Aprons  
(Bib and Bar)

Clothes Cleaning, Dyeing and Pressing

YOUR PHONE CAN REACH US IN A MINUTE

2112-2114 Alhambra Blvd.

Phone 5-2617

Residence Phone  
5-8712

SACRAMENTO DIRECTORY CO'S  
**SACRAMENTO  
CITY  
DIRECTORY  
1943**

**INCLUDING NORTH SACRAMENTO, WEST  
SACRAMENTO AND BRODERICK**

Containing an Alphabetical List of Business Firms and  
Private Citizens, a Revised Street and Avenue  
Householders Guide and Much Information  
of a Miscellaneous Character, also a

**"BUYERS' GUIDE"**

AND A COMPLETE

**CLASSIFIED BUSINESS DIRECTORY**

For Detailed Contents See General Index



**SACRAMENTO DIRECTORY CO., Publishers**  
423 J STREET

Directory Library for Limited Free Use of Public at 828 I Street, cor. 9th

Member Association of North American Directory Publishers

---

COPYRIGHT, 1943, BY SACRAMENTO DIRECTORY CO.

## GENERAL INDEX

	Page
Abbreviations .....	20
Alphabetical List of Names .....	21
Broderick Alphabetical List of Names .....	See Sacramento
Buyers' Guide .....	Opposite Page 902
City Government .....	545
Classified Business Directory .....	903
County Government .....	546
Firm Abbreviations .....	19
Householders .....	701
Introduction .....	11
North Sacramento Alphabetical List of Names .....	See Sacramento
State Offices and Officers .....	600
Statistical Review .....	13
Street and Avenue Guide .....	701
United States Offices and Officers .....	205
West Sacramento Alphabetical List of Names .....	See Sacramento

# INDEX TO ADVERTISERS

(Page numbers below refer to Buyers' Guide opposite page 902)

	Page
Acacia Mutual Life Insurance Co.....	63
Acme Transfer & Storage Co.....	Classified Tab Insert
Ahl Frank Z Sheet Metal Works.....	back cover, left side lines, 97 and 104
Alhambra Laundry & Fotos Linen Supply.....	back cover, B and C
American Trust Co.....	right top lines and 11
Andrews & Greilich.....	left bottom lines and 47
Argonaut Liquor Co.....	69
Artz & Cook.....	right top lines, 60 and 88
Associated Underwriters.....	left side lines and 63
Bank of America National Trust & Savings Assn.....	left bottom lines and 12
Bankamerica Co.....	65
Bekins Van & Storage Co.....	left side lines and 99
Benjamin & Rackerby.....	left side lines and 82
Board of Trade of Sacramento County.....	right bottom lines and 29
Bon Marche'.....	right bottom lines, right side lines and 26
Borden's Capital Dairy Co.....	right side lines and 35
Bowman's.....	left side lines and 7
Braddock's Shoe Store.....	left side lines and 99
Breen L J "Larry".....	63
Breuner John Co.....	left bottom lines, left side lines and 53
Burd's Business Employment Agency.....	45
Burnett & Sons.....	left side lines and 84
Bush Roofing Co.....	Y
California Engineering Co.....	31
California-Western States Life Insurance Co.....	left side lines and 63
Capital City Title Co.....	backbone, right side lines and 101
Capital Clothing Co.....	left side lines and 23
Capital Federal Savings & Loan Assn.....	19
Capital Lumber Co.....	front cover, left side lines and 71
Capital National Bank.....	13
Capital Parcel Delivery Co.....	right side lines and 81
Capitol Chevrolet Co.....	left side lines and 6
Carlaw Bros.....	Z
Carnie-Goodwin-Pendleton Co.....	left bottom lines and 9
Chandler & McBrearty.....	58
Cheek Elliott F.....	right top corner cards and 89
Cippa & Nicoletti.....	51
Citizens Bank of Sacramento.....	14
Citizens Mortuary Co.....	52
Clark Booth & Yardley.....	52
Clauss & Kraus.....	left side lines and 76
Club Taxi Co.....	left side lines and 100
Consumers Ice & Cold Storage Co.....	left top lines and 58
Crocker H S Co.....	A
Crystal Cream & Butter Co.....	37
Culjis N G Funeral Home.....	52
Daggett Funeral Home.....	right top lines and 52
Dallman Supply Co.....	86
Dana Motors.....	right bottom lines and 3
Davis Herman & Sons.....	78
Dean Witter & Co.....	front cover, right side lines and 16
Diamond Match Co.....	left top lines and 72
Dolan Building Materials Co.....	left bottom lines, right side lines and 73
Dome Engraving Co.....	left side lines, 34 and 46
East Lawn Inc.....	left top lines and 21
Eastern.....	back cover, left bottom lines and 38
Elkus Albert Inc.....	25
Elliott & Huston.....	93
Enos Department Store.....	left side lines and 42
Equitable Life Insurance Co of Iowa.....	64
Federal The.....	42
Ferguson D F Co.....	64
Fidelity Title Insurance Co.....	Alphabetical Tab Insert, left side lines and 102
Fiedler Carl R.....	31 and 96
Friend & Terry Lumber Co.....	right side lines and 74
Fuller W P & Co.....	left top lines, right bottom lines and 79

## INDEX TO ADVERTISERS—Cont'd

	Page
Globe Transfer & Warehouse Co.....	front edge, left side lines and 104
Golden State Co.....	front cover, right top lines and 36
Gormley W F & Sons.....	left top lines and 48
Grebitus Edwin A.....	left top lines and 66
Greyhound Taxi Co.....	left bottom lines and 100
H & C Taxi Co.....	left bottom lines and 100
Hale Bros.....	right bottom lines, right side lines and 39
Hanrahan-Burns Fuel Co.....	House Guide Tab Insert and 46
Harger H T Co.....	left side lines and 67
Harrold Ellsworth.....	7
Heald's Business College.....	20
Heeseman Inc.....	left bottom lines, right side lines and 24
Henry's Collection Co.....	right side lines and 27
Hickman-Coleman Co.....	right top lines and 90
Home Milk Co.....	32
Hotel Lenhart.....	57
House of Brakes.....	9
Household Finance Corp.....	70
Hoyt's Doughnut Shops.....	back cover, left bottom lines and 43
Intercoast Hospitalization Insurance Assn.....	right side lines and 64
Johnnie's Cyclery.....	15
Jones Taxi Cab Co.....	right side lines and 100
Jones & Brand & Hullin.....	front cover, right bottom lines and 91
Joseph Manuel.....	back cover and 45
Katzenstein C L & Co.....	left top lines and 62
Kay Jewelers.....	right top lines and 62
Klumpp Geo L.....	right top lines and 51
Knox Lumber Co.....	75
Lagomarsino F & Sons.....	left bottom lines and 97
Lamus-Lundlee Co.....	8
Lauppe F E.....	70
Lavensons Inc.....	left bottom lines, right top lines and 98
Leachman Boyd Auction Co.....	2
Lee Richard F.....	right side lines and 78
Leonard W B O.D.....	A B C cards and 78
Lester's.....	57
Local Loan Co.....	left top lines and 70
Loras & De Beau.....	43
Lundstrom Fred E Co.....	8
Luppen & Hawley.....	right side lines and 85
Lyons Ed R.....	right top corner cards and 89
McClatchy Realty Co.....	left side lines and 96
McGee & Thielen.....	right side lines and 64
McIntyre Francis A.....	84
McKesson & Robbins.....	44
Merchants National Bank.....	14
Merchants Service Bureau.....	left side lines and 29
Miller Automobile Co.....	left side lines and 4
Miller & Skelton.....	right top lines and 49
Moore & Garlick.....	left bottom lines, right top lines and 83
Morrissey Co.....	93
Mortgage Realty Co.....	left side lines and 94
Mott Clifford A.....	right bottom lines and 65
National Mercantile Agency.....	front cover, right top lines, 2 and 28
Natomas Co.....	left side lines and 94
Nauman Harry A & Son.....	right bottom lines and 50
Navlet's Flower Shop.....	right side lines and 46
News Publishing Co.....	right side lines and 87
Normans Friendly Credit Jewelers.....	67
Occidental Life Insurance Co.....	62
Orchard Supply Co.....	78
Pacific Gas & Electric Co.....	55
Palace Laundry.....	top and bottom edges, left top lines and 68
Parsons Bros.....	right side lines and 20
Pease Conservatory of Music.....	left side lines and 30
Penney J C Co.....	42
Perkins Gravel Co.....	18
Powell Robert & Co.....	left top lines and 17

## INDEX TO ADVERTISERS—Cont'd

	Page
Reeves, John R.....	32
Reliable Electric Works.....	left side lines and 45
Retailers Credit Assn.....	right top lines and 33
Sacramento Abstract & Title Co.....	right top lines, right side lines and 103
Sacramento Golden State Laundry.....	69
Sacramento Special Messenger & Light Delivery Service.....	81
Sacramento Tractor & Equipment Co.....	right top lines and 76
Sacramento Union.....	left top lines and 77
Sears Roebuck & Co.....	left top lines, right bottom lines and 40
Service Factory The.....	6
Shay Harold.....	right side lines and 46
Sherwin-Williams Co.....	left top lines and 80
Shoemaker Lew, Credit Counselor.....	backbone and 30
Sierra Mill & Lumber Co.....	back cover, left top lines, 75 and 84
Silver's Jewelers.....	67
Sinnott Leolin T.....	65
Sonotone of Sacramento.....	right side lines and 56
Spittler Motor Sales.....	8
Standard Furniture Co.....	left bottom lines and 54
Star Roof Co of Sacramento.....	96
Teichert A & Son.....	18
Thomson-Diggs Co.....	right side lines and 56
Transport Motor Co.....	right side lines and 5
Union Taxi Co.....	left side lines and 100
Vogel Chevrolet Co.....	7
Volunteers of America.....	left side lines and 2
Waters-Neideffer & Waters.....	95
Watrous-McClory Co.....	front cover, right top lines and 61
Weaver Tractor Co.....	76
Weinstock, Lubin & Co.....	left top lines, right bottom lines and 41
West Sacramento Land Co.....	right bottom lines and 95
Western Van & Storage Co.....	right top lines and 99
Wholesalers Credit Assn.....	34
Williams & Williams.....	right side lines and 96
Woodard D R.....	22
Wright & Kimbrough.....	right side lines and 92
Yancey Co.....	back cover, left side lines and 59



## INTRODUCTION

---

THE SACRAMENTO DIRECTORY CO., publisher of the Sacramento City Directory, presents to subscribers and the general public, this, the 1943 edition of the Sacramento City Directory, which also includes North Sacramento, West Sacramento and Broderick.

Confidence in the growth of Sacramento's wealth, industry and population, and in the advancement of its municipal and social activities, will be created as sections of this directory are consulted, for the directory is a mirror truly reflecting Sacramento to the world.

The enviable place occupied by these directories in offices, stores, libraries and homes throughout the country, has been established by rendering the best in directory service. With an unrivaled organization, having the courteous and hearty cooperation of the business and professional men and residents, the publishers feel that the result of their labors will meet with the approval of every user, and that the Sacramento Directory will fulfill its mission as a source of authentic information pertaining to the city.

### Population

The estimated population of Sacramento is 132,575, based on the number of individuals names in the alphabetical section of the directory, with due allowance for children and for women whose names are not listed separately from those of their husbands. Territory immediately adjacent, which is part of the city, as far as business and social life are concerned, is included in the directory.

# Sacramento Statistical Review

---

Name of City—Sacramento.

Slogan or sub-phrase—"Heart of California."

Form of Government—City Manager-Council.

How Incorporated—City.

Population—1940 U. S. Census report, 105,958.

Area—14 square miles.

Altitude—30 feet above sea level.

Climate—Mean annual temperature, 60.3 degrees F.; average annual rainfall (or precipitation), 18.02 inches (50 yr. average).

Parks number 25, with total acreage of 1204, valued at \$2,693,300.00.

Assessed valuation—\$130,863,300, with \$1.89 per \$100.00 tax rate in old city; \$1.87 in annexed sections.

Bonded Debt—\$6,591,050.00, Dec. 31, 1942.

Financial Institutions—8 banks, with debits of \$2,038,498,000 for the year 1942; 9 savings banks, with total savings deposits of \$63,281,687.69 on December 31, 1942; 6 building and loan associations.

Postal Receipts—\$1,522,588.27 for the year ending December 31, 1942.

Churches number 93, representing 21 denominations.

Building and Construction—Building permits valued at \$2,525,249.00 in 1942.

Industry—Chief industries of the city and surrounding territory, manufacturing, agriculture, transportation, distribution and trading center. Number of manufacturing establishments 470, employing 15,845 (including seasonal workers) men and women, paying wages of \$13,711,305 annually. Principal manufactured products: Fruit and vegetable canning, railroad manufacturing and repair shops, slaughtering and meat packing, rice cleaning and polishing, sheet metal and tin cans, flour and mill feeds, almond shelling, printing and bookbinding.

Trade Area—Retail area has radius of 100 miles, and population of 500,000. Wholesale area has radius of 370 miles, and population of 2,000,000.

Newspapers—Daily, 3; daily and Sunday, 1; weekly, 5.

Hotels number 124, with total of 7985 rooms. Newest hotel opened in 1929.

Railroads—City served by 4 railroads, as follows: Southern Pacific, Western Pacific, Sacramento Northern, Central California Traction Co.

Highways—The following highways run through the city: U. S. 40, U. S. 50, U. S. 99.

Airports number 3—Municipal, U. S. Army repair depot and supply base, and Mather Field.

Amusements—Largest auditorium (municipal) in city seats 5000 persons. 20 moving-picture theatres, with total seating capacity of 19,904 persons. Number of golf courses in, or near, the city, 3.

Hospitals number 7 (including 2 emergency), with total of 1012 beds.

Education—Number of public schools 31, including 1 junior college, 2 senior high schools and 7 junior high schools. Number of parochial schools, 8. Number of pupils in public schools, 41,976. Number of teachers in public schools, 871. Value of public school property, \$10,959,560.

Public Libraries—(number, including branches) 6, with total of 662,828 volumes.

City Statistics—Total street mileage 306, with 292 miles paved and none under construction. Miles of gas mains, 340; of sewers (sanitary), 286; of bus and electric street railway, 58. Number of water services, 33,676; electric meters, 36,864; gas meters, 34,599. Capacity of water works (municipal), 64,000,000 gallons, with daily average pump of 25,600,000 gallons, 276.71 miles of mains, and plant valued at \$3,588,461. Fire department has 191 paid men, with 10 autos, 2 utility cars, 1 squad wagon, 5 water wagons, 5 trucks, 3 hose wagons, 10 engines, 10 station houses and 1 Central Fire Alarm Station. Value of fire department real estate and equipment, \$579,510.32. Police department has 150 members, 22 civilian employees, with 1 station and 37 pieces of motor equipment, all radio equipped. Value of police department real estate and equipment, \$289,410.82.

# SACRAMENTO FACTS AND HISTORY

## AGRICULTURAL

Sacramento Region produces 35% of the total value of agricultural products in the State of California.

## INDUSTRIAL

Number of manufacturing plants.....	470
Wage earners (including seasonal workers).....	15,845
Payroll .....	\$13,711,305

## LOCATION

Geographic and economic distribution center of the Sacramento Region, composed of twenty-one counties possessing over fifty per cent of the water resources of the State of California, rich agricultural lands and diversified industrial resources including precious and industrial mineral deposits, lumber and hydro-electric power.

## RAW MATERIALS

Center of great producing area including the widest diversification of resources in the State.

## TRANSPORTATION

Three transcontinental railroads. Two interurban electric lines. Sacramento River steamers, operating daily to San Francisco. Nine motor stage lines. Motor truck lines operate in all directions out of Sacramento.

## POWER

Abundance of electric power at low rates.

## WATER

Excellent municipal water supply in abundance at exceptionally low rates.

## AVAILABLE SITES

Excellent locations on rail and water or both, available at reasonable cost.

## MUNICIPAL CONDITIONS

Conservative tax rates, excellent housing conditions, progressive city government providing ample facilities for industrial expansion.

## LABOR

Largest labor market west of Chicago with excellent relations prevailing.

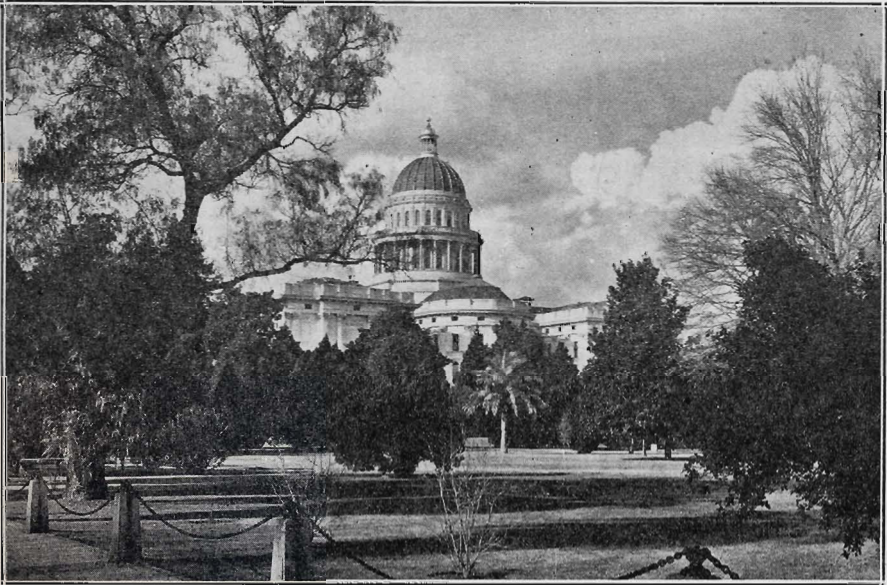
## OPPORTUNITY

A sound, prosperous, expanding section of California with increasing markets.

## The Sacramento Chamber of Commerce

Is at your service for further information

# SACRAMENTO



STATE CAPITOL BUILDING

**S**ACRAMENTO, the "Heart of California" and the capital city of the state, is located at the confluence of the Sacramento and American rivers, in the center of the greatest agricultural, mineral and timber producing area of California. With a background of history closely entwined with some of the great epochal events in the civilization and development of the Pacific Coast, Sacramento through her years of civic and commercial progress has maintained leadership among the cities of the West. It is now the largest interior city in California and one of the most rapidly growing cities in America.

Sacramento has graduated from the class of the ordinary capital city to a thrifty metropolis of 115,557 on January 1, 1943.

The westward movement of population has found Sacramento one of the beautiful cities of the Golden State, a comfortable and prosperous community in which to live.

The city is built on a level plain with an incorporated area of fourteen square miles. The climate is semi-tropic, with an average mean annual temperature of 60.3 degrees, and an annual average rainfall of 18.02 inches (U. S. Weather Bureau 50-year record).

Sacramento's most notable beauty is in its wide tree-lined streets and its 1204 acres of municipal parks. No city in the West equals this city in number of street trees, cared for and protected by the city government.

Sacramento is the home of the annual California State Fair, the largest and most successful exposition of its kind in the United States. Attendance, 748,393 in 1941.

Notable among the historic points of interest are Sutter's Fort, now entirely restored to its original form, and maintained as a state museum, housing a priceless exhibit of relics of pioneer days; Crocker Art Gallery, one of the most valuable art collections in the West; and the \$13,500,000 group of Capital buildings, surrounded by a 40-acre state park world-famed for its beauty and the more than one thousand varieties of trees, shrubs and flowers gathered from every country on the globe.

Sacramento's school system is recognized as one of the best in the state, noted for its educational progress, with a \$1,500,000 high school, another new \$765,000 high school, and a \$1,121,000 Junior College typical of its outstanding excellence. A splendid stadium, costing \$175,000 and seating 23,000 persons, was erected on the Junior College campus in 1928. In 1932 the city of Sacramento voted \$1,146,000 in bonds for the construction of three new Junior High School buildings. Since 1932, \$273,300 has been expended on the Elementary Schools for additions and improvements, \$509,600 on the Junior College, and \$267,150 on the Senior High Schools.

Sacramento's Junior College ranks in point of attendance as the third largest Junior College in California. Enrollment for the 1940-41 term was 3,362, with 118 teachers on the staff. Students are registered from 41 counties in the state, from Del Norte and Modoc on the north to Riverside and San Bernardino in the south, and from thirty-two other states. The college, which has grown from an infant in 1926 with an initial enrollment of 45, is housed in a group of beautiful buildings on a 61-acre campus, representing an investment of bond money totaling \$1,365,000.

The beauty of its residential sections, modern public and business buildings, beautiful churches and splendid hospitals add to its attractiveness as a home city. Several new residential districts have been created during the past year.

Sacramento's million dollar Memorial Auditorium, splendid hotel and restaurant accommodations and its metropolitan theatres have made it an outstanding convention center, exceeded in numbers of state and national convention gatherings only by Los Angeles and San Francisco.

Most remarkable of any feature of its development has been Sacramento's industrial growth. The War Department's Repair Depot and Supply Base for the West Coast Air Corps is the latest vital addition.

The Southern Pacific shops in Sacramento are the second largest in the world. The Western Pacific has its main shops in Sacramento and spent \$500,000 in new shop facilities in 1938.

The principal industry is that of canning fresh fruits and vegetables, Sacramento's four canneries being among the largest in California, and one of them the largest institution of its kind in the world. The four canneries in Sacramento produce annually 19.6% of the total output of the 309 canneries in California. The largest freezing plant for the "Frozen Food Industry" in California is located at Sacramento. Fresh fruits, vegetables, poultry, etc., are frozen here. The plant of the American Can Company is the largest and most modern of the can factories operated by that national concern, emphasizing Sacramento's position as the canning center of the state.

Sacramento has the largest almond shelling plant in the world, and more than sixty-five per cent of the state's total almond output is handled here.

Flour and feed mills, slaughtering and meat-packing houses, rice mills, bean cleaners, clay, pipe and pottery works, lumber and box factories and similar institutions convert into manufactured products other raw material provided by the vast agricultural, timber and mineral wealth of the region.

Sacramento County is most fortunately situated with regard to transportation. Three great transcontinental railroad systems, the Southern Pacific, Western Pacific and Santa Fe, offer quick transportation to Eastern markets. Two interurban electric lines, the Sacramento Northern Railway and Central California Traction, supplement the steam roads.

The Sacramento River, ranking among the foremost in the nation in amount of tonnage carried and second in per ton value of cargo, offers rapid and cheap water transportation to San Francisco Bay and world markets. Palatial passenger steamers to San Francisco are operated by The River Lines.

Paved county highways supplement the main trunk lines of the great state highway system to every important center in the county, and stage lines radiate in every direction.

Transcontinental and coastwise air mail, express and passenger lines center at Sacramento's Municipal Airport.

Sacramento is the banking center of interior California, served by nine strong banking institutions.

## HISTORY

**H**ISTORICALLY, Sacramento is associated with three great epochal events in California's development. The settlement established August 12, 1839, by Capt. John A. Sutter at Sutter's Fort, now Sacramento, was the first settlement of white men in interior California, and marked the beginning of agricultural development that has made California third among the states of the Union in total value of its agricultural products.

The discovery of gold January 24, 1848, by James W. Marshall, one of Sutter's men, at Coloma, sixty miles east of the city, brought about the great gold rush of '49 and '50 which so quickly populated the state that it was admitted to full-fledged statehood September 9, 1850.

The transcontinental railroad started from Sacramento in 1863 and completed in 1869 (the old Central Pacific, now Southern Pacific) was the first to link the West to the East with bands of steel, and from the viewpoint of lasting benefits, overshadows even Marshall's discovery.

Sacramento was incorporated in 1849 and chosen as Capital of California in 1854.

## SACRAMENTO COUNTY FARM FACTS

**T**HE CENSUS of 1910 gave Sacramento County 1601 individual farms. In 1940 the number had grown to 3,456. This was an increase of 116% for the 30-year period, 1910-1940.

Sacramento County produces, successfully and in large quantities more than twenty varieties of fruits and nuts, and every known American vegetable. Some crop is in harvest every month of the year.

The following table shows the acreage planted to leading fruits and nuts in 1941: Almonds, 2,703; apples, 63; apricots, 438; cherries, 692; citrus, 746; figs, 172; grapes, 12,375; olives, 1,774; peaches, 1,523; pears, 5,148; persimmons, 18; plums, 1,364; prunes, 2,462; walnuts, 914.

Leading vegetables and the acreage planted in 1942: Asparagus, 11,780; green beans, 200; dry beans, 7,500; sugar beets, 10,167; cabbage, 250; cantaloupes and watermelons, 50; carrots, 250; cauliflower, 150; celery, 50; cucumbers, 286; lettuce, 80; onions, 250; peas, 800; spinach, 921; strawberries, 1,500; tomatoes, 13,634; potatoes, 50.

One of California's best opportunities for successful and profitable orange production is offered in the beautiful foothill "thermal belt" which forms the eastern part of Sacramento County, embracing the districts of Fair Oaks, Orangevale, Citrus Heights, Carmichael, Arcade and Folsom. Oranges have been grown for thirty years in this section, to prove beyond question the adaptability of its soil and climate. Fruit ripens weeks ahead of that in Southern California, to reach Thanksgiving and Christmas markets, avoiding danger of late-season frosts.

The region of which Sacramento is the metropolis and trading center—the twenty-one counties of Northern California—east of the Coast Range—produces 35% of California's total agricultural yield; 75% of its precious and structural mineral products; and has 9,000,000 of the 14,000,000 acres of virgin timber still standing.

## UNEQUALLED DIVERSIFICATION

**S**ACRAMENTO COUNTY, according to County Horticultural Commissioner A. E. Morrison, is the most diversified in its products of any county in California. This remarkable diversification is what makes for stable and year round prosperity.

Coupled with rich soil, ample water and intensive farming methods, this diversity places Sacramento County in a place of conspicuous leadership among the high producing counties of California.

Sacramento County is the third largest poultry producing center in California. It offers ideal conditions for dairying and livestock production.

Land prices, available markets and ideal conditions assure success to the man who knows how and will farm right.

## THE SACRAMENTO CHAMBER OF COMMERCE

**T**HIS ORGANIZATION is the active representative of the commercial, industrial, financial and civic interests of Sacramento in promoting its welfare and prosperity. The Chamber is completely departmentalized, with Industrial, Transportation, Agricultural, Tourist and Resort, Exhibit and Publicity departments, under experienced managers, set up for the purpose of supplying complete and authentic information on matters relating to Sacramento and Northern California. Arthur S. Dudley is Secretary-Manager. The Chamber occupies its own building at 917 Seventh Street.

## BOOKLETS FOR FREE DISTRIBUTION

For additional detailed information call on the Chamber of Commerce for the following booklets:

“The Key to Sacramento”

“Map of Sacramento City”

“Sacramento Business Barometer”

“To the Man Who Wants to Keep Happily Active”



AERIAL VIEW OF STATE CAPITOL