

KENNY

Collector

PHONE 1736

OCHSNER BLDG.

Lumbard & Dolge

CERTIFIED
PUBLIC
ACCOUNTANTS

CAP. NAT. BANK BLDG.
MAIN 1101

SACRAMENTO CITY Directory 1923

Sacramento Directory Co.
PUBLISHERS
SACRAMENTO, CALIF.

Paints
Mirrors
Glass

W. P.

FULLER & Co.

THE NATIONAL MERCANTILE AGENCY COLLECTIONS 209

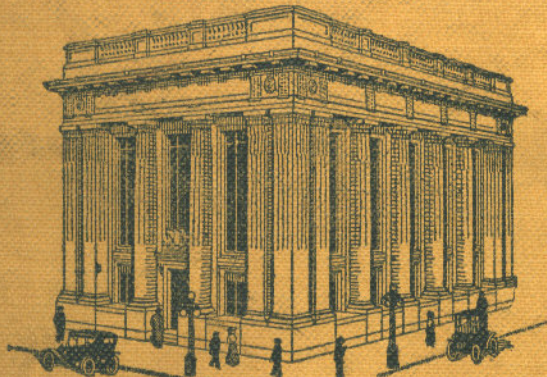
Nicolaus Bldg.
TEL. 5193

NATIONAL BANK

OF

D. O. MILLS & CO.

THE OLDEST BANK WEST OF THE ROCKIES
ESTABLISHED 1850



GENERAL BANKING

SAFE DEPOSIT BOXES

7TH AND J STS.

SACRAMENTO

FRENK & Z. AHL

Tel. Main
3800



1615
21st St.

Branch:
1021 10th St.
(MULL BLDG.)

SHEET METAL WORKS MANUFACTURER

HEATING AND VENTILATING

THE STATEWIDE BANK

BANK OF ITALY

SAVINGS — COMMERCIAL — TRUST

CAPITAL AND SURPLUS \$20,000,000.00

HEAD OFFICE, SAN FRANCISCO

SACRAMENTO BRANCH: S. W. COR. K AND 6TH STS.

COAL

AMERICAN

FUEL AND FEED CO.

PHONE
CAP. 80

F. F. SMITH & CO.

POULTRY SUPPLIES
FEED, GRAIN, INCUBATORS, ETC.
1006 J ST. TEL. M 673



The Bank That Never Forgets To Serve Your Best Interests

TO be of practical service to our customers
—to take an interest in helping them in
every way consistent with good banking prac-
tice—is the spirit behind this institution.

Your Commercial or Savings Account is invited.

Our Banking By Mail Department is for your
greater convenience.

THE PEOPLES BANK

COMMERCIAL AND SAVINGS

Eighth and J Streets, Sacramento, California

2009-Sp 6



A Friendly Helpful Banking Service

It is the aim of this bank to be of real service to its patrons. We take a sincere and genuine interest in your affairs, not only in the routine handling of your banking business but in financial matters of all kinds, such as income taxes, value of investments, etc.

The wide experience of our officers and directors is at your disposal at all times. Bring your problems to us. We shall be glad to be of service to you.

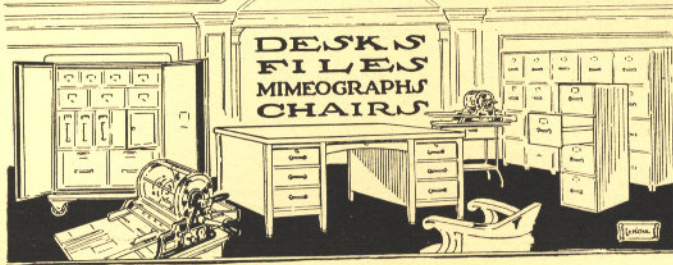
Electrically Protected Safe Deposit Boxes
\$1.00 Per Year and Up

The Merchants National Bank

Seventh--- Opp. Post Office

4% INTEREST PAID ON **4%**
SAVINGS ACCOUNTS

H. S. CROCKER CO. Inc



Office Furniture

**Desks, Chairs, Tables, Globe Wernicke
Files and Supplies, Globe Structural
Strength Safes**

A complete stock on our floors at all times.
Catalogues sent on application.

Stationery

Wholesale and Retail. Most complete stock in the State.

Printing

A complete Printing and Bookbinding Equipment.
Lithographing and Engraving.

Office Appliances

A. B. Dick Mimeograph

The Perfect Duplicator

The Addressograph

For addressing Statements and for Direct Mail
Advertising.

H. S. CROCKER COMPANY, Inc.

ESTABLISHED IN 1856

208-210 J ST. SACRAMENTO

Stores in San Francisco and Los Angeles

MAIN 264 - 3 TRUNK LINES

SACRAMENTO DIRECTORY CO'S

SACRAMENTO
CITY

DIRECTORY
1923

Comprising an Alphabetically Arranged List of Business Firms
and Private Citizens of the City of Sacramento and Its
Environs, a Complete "Householders" Guide

AND A

CLASSIFIED BUSINESS DIRECTORY
"THE BUYERS' GUIDE"

Price

"The
DIRECTORY
IS THE COMMON
INTERMEDIARY
BETWEEN
BUYER AND SELLER."

\$12.50

VOL. 33

SACRAMENTO DIRECTORY CO., Publishers
P. O. BOX 687, SACRAMENTO, CAL.

Member of the Association of North American Directory Publishers

Copyright 1923, by The Sacramento Directory Co.
Larkin Printing Co.  Sacramento, Calif.

INTRODUCTORY

In presenting the thirty-third issue of the Sacramento City Directory, and by comparing it with the 1922 directory, the publishers feel that the city has made great strides in its growth, as well as in the number and variety of industries.

We desire to thank all who have contributed to the success of the work either by generous patronage or in co-operation in furnishing information to our enumerators. The information has been taken by men who are carefully trained in this work and we believe this directory will compare favorably with any previous issue.

POPULATION

The present volume contains by actual count 36,184 names, exclusive of married women and children, single women without occupation, and also Orientals, an increase of 738 names over 1922. Using the multiple of 2½, which is in general use by directory publishers, this gives an estimated population for Greater Sacramento of 90,460, an increase of 1,845 over 1922.

Respectfully,

SACRAMENTO DIRECTORY CO.

April 20, 1923.

Section 28, Copyright Law, in Force July 1, 1909.

"That any person who willfully and for profit shall infringe any copyright secured by this Act, or who shall knowingly and willfully aid or abet such infringement, shall be deemed guilty of a misdemeanor, and upon conviction thereof, shall be punished by imprisonment for not exceeding one year, or by a fine of not less than one hundred dollars, nor more than one thousand dollars, or both in the discretion of the court."

Sacramento Facts and Figures

Supplied by the Sacramento Chamber of Commerce.

HISTORY.

Sacramento is California's largest inland city and is the distributing center for a trade area which comprises the great Sacramento Valley and western Nevada. It is at the intersection of the great east and west overland route with the north and south lines which unite the Pacific Coast.

Sacramento had its origin in the decision of Captain John A. Sutter, a daring Swiss explorer, to establish a trading center and fort at the confluence of the American and Sacramento rivers, after an exploring expedition up the latter river in 1839. When he needed lumber, he established a sawmill at Coloma, on the American river, and here John W. Marshall, one of his employes, discovered gold on January 24, 1849. The world-wide gold rush which followed established for all times the permanence of Sacramento. A city government was organized in July, 1850, and in 1853 Sacramento became the permanent capital of the state. In 1863, work started in Sacramento on the Central Pacific Railroad, and following its completion in 1869 Sacramento soon became one of the most important railroad centers in the west.

The railroad construction and repair shops which were established soon after are the largest west of the Mississippi and constitute the principal industrial activity of the city.

GROWTH.

Sacramento has never passed through the inflated prosperity of a 'boom.' Its growth has been steady and certain. The following table shows the steady population increase as reported by the United States census:

1850.....	6,820	1890.....	26,386
1860.....	13,785	1900.....	29,282
1870.....	16,283	1910.....	44,696
1880.....	21,420	1920.....	65,908

In the decennial period between 1910 and 1920, the city's official population increased 47.5 per cent.

The healthy increase in the business and civic enterprises of the city also reflect the underlying economic forces which are producing a steady growth. The following items are a few which show this growth:

ASSESSED VALUATION.

1910.....	\$36,569,062
1922.....	91,957,047

Increase 152%

SCHOOL ENROLLMENT.

1910.....	6,164
1922.....	16,940

Increase 174%.

BANK CLEARINGS.

1910.....	\$70,870,997
1922.....	323,673,518

Increase 356%.

BANK DEPOSITS.

1910.....	\$24,800,000
1922.....	77,191,000

Increase 211%.

POSTAL RECEIPTS.

1910.....	\$238,542
1922.....	685,056

Increase 187%.

BUILDING CONSTRUCTION.

1919.....	\$2,054,843
1920.....	3,449,388
1921.....	4,771,205
1922.....	9,401,753

INDUSTRIES.

1910.....	employees	5,256
1922.....	employees	13,712

Increase 166%.

COMMERCE (Tonnage).

1910.....	1,050,000
1922.....	1,815,645

Increase 72%.

NUMBER OF BUSINESSES (Professions Excepted).

1910.....	1,207
1922.....	1,901

Increase 57%.

The value of the products of Sacramento industries in 1922 was \$45,000,000.

GOVERNMENT.

Sacramento is under a city manager form of government, provided by a modern municipal charter which became effective on July 1, 1921. Legislative authority is vested in a city council of nine members, who are the only officials to be elected directly by the people. A mayor is elected by the council from among its own number.

Administrative authority is vested in the city manager, who is appointed by the city council. The city council also appoints the civil service board, the city attorney, police judge, clerk, treasurer and board of education. The board of education appoints the city superintendent of schools. All other city officials are appointed by the city manager.

The Sacramento city tax rate is \$1.78 per \$100 assessed valuation within the old boundaries and \$1.69 in the annexed area. The Sacramento county tax rate is \$3.16 inside the city limits and \$2.46 in the rest of the county.

CLIMATE.

Sacramento has one of the most equitable climates in California and its mean summer temperature is 71.75 and its mean winter temperature is 47.75. Its mean yearly temperature is 60. The average monthly figures are as follows:

	Mean	Max.	Min.
January	46	72	19
February	50	76	21
March	54	82	29
April	59	89	35
May	63	103	39
June	69	108	44
July	73	110	47
August	73	110	48
September	70	106	44
October	63	98	36
November	54	81	27
December	47	69	24

THE SACRAMENTO CHAMBER OF COMMERCE.

This organization is the active representative of the commercial, industrial, financial and civic interests of Sacramento in promoting its welfare and prosperity. It is equipped to supply complete and authentic information on all matters relating to Sacramento and Northern California. The Chamber maintains an industrial and home products bureau, a fruit and agricultural bureau, a tourist bureau and a department of research and statistics for this purpose. A. S. Dudley is secretary-manager. The Chamber occupies its own building on 917 Seventh street.

STREET AND AVENUE GUIDE

Alphabetically named streets run from e to w boundary. Numerically named avenues run from e to w boundary 1st Av being 1 s of Y. Numerically named streets run from n to s boundary.

Argonaut Court—From 4018 2d av s ½ blk.
 Bear Flag Way—From H to J, 1 e 47th.
 Berkshire—Colonial Heights.
 Bidwell Way—From 21st w to 17th, 1 s 5th Av.
 Bigler Way—From 37th e to Sacto Boul, 1 s 5th Av.
 Bret Harte Court—From 36th e to Sacto Boul, 1 s 4th Av.
 Burnett Way—From 20th e to 26th, 1 s Y.
 Burns—From J n, corresponds 47th.
 California—From 5th to 8th, bet J and K.
 Castro Way—From W P Ry to 25th, 1 s 2d Av.
 Catala Way—From 2720 41st, runs e.
 Central—From Parker s to Roosevelt, 1 w Stockton Boul.
 Clara—From 3922 Stockton Boul, w 1 blk.
 Colonial Av—Colonial Heights.
 Crocker Court—From 3214 San Jose Way e, 1 n 8th Av.
 Curtis Way—From 27th e to Franklin Boul, 2 s 5th Av.
 Custus—From Sutterville Rd s, 1 w of W P Ry.
 Discovery Way—From R to T bet 48th and 49th.
 Dolores Way—From J to M bet 36th and 37th.
 Donner Way—From 24th to 33d, 1 s 5th Av.
 Downey Way—From 36th and X, ne 2 blks.
 Elliott—From Stockton Boul w, 1 s of 14th Av.
 Folsom—From Roosevelt s, 1 w of Stockton Boul.
 Folsom Boulevard—From 31st and M, runs e corresponds to O.
 Franklin Boulevard—From Y and 28th s to limits.
 Freeport Boulevard—Continuation of 21st s to limits.
 Front—From I s to Y, 1 e of river.
 Garfield—From 14th Av s, 3 w of Stockton Boul.
 Hillside—From Stockton Boul w, 3 s 14th Av.

Howard—From Hillside s, 1 w Stockton Boul.
 Japanese Alley—From 2d to 4th bet L and M.
 Jefferson—From 14th Av s, 2 e Sacto Boul.
 La Purissima Way—From B to F bet 44th and 45th.
 La Solidad Way—From 4th to 8th Avs, 2 e Sacto Boul.
 Larkin Way—From 20th to 21st, 3 s Y.
 Leese Way—From Sacto River e to 9th, corresponds to 5th Av.
 Libby Court—Adjacent to Libby McNeill & Libby's cannery.
 McClatchy Way—From Riverside Boul w, 1st s of Odd Fellows Cemetery.
 McKinley—From 45th to 46th, 1 s 14th Av.
 Madison Court—From 38th to Sacto Boul, 1 s 12th Av.
 Magnolia Court—From 2d to 3d Avs, corresponds to 39th.
 Marion Court—From Sutterville Rd s, 1 w Freeport Boul.
 Mariposa—Colonial Heights.
 Markham Way—From 18th to 21st, 7 s Y.
 Marsh Court—Extension of V from 31st to 33d.
 Marshall Way—From 21st to 33d, 1 s 4th Av.
 Mead—From Sutterville Rd s, 2 w Freeport Boul.
 Miller Way—From 37th and Y, ne to Stockton Boul.
 Mission Way—From J n bet 42d and 43d.
 Montgomery Way—From 24th to 33d, 2 s 5th Av.
 Nichols—Continuation of 43d beyond 14th Av.
 Pacific Av—From 12th Av s, 2 e W P Ry.
 Pansy Court—From 36th to 37th, 1 s 9th Av.
 Parker—From 44th to Stockton Boul, 5 s 14th Av.
 Perkins Way—From Freeport Boul e, 3 s 5th Av.
 Pierson's Addition—Nw of Slater's addition on Sacto River.
 Plumas Av—Colonial Heights.
 Portola Way—From 21st to Franklin Boul, 2 s 4th Av.
 Riverside Boulevard—From Y s to limits, corresponds to 11th.

Rodeo Way—From J to Folsom Boul, corresponds to 53d.	Santa Rosa—Colonial Heights.
Roemer Lane—From 4209 Stkn Boul e to Sonoma	Santa Ynez Way—From H to R, 1 e 35th.
Roosevelt—From 44th to Stockton Boul, 6 s 14th Av.	Schley—Now Folsom Boulevard.
Sacramento Boulevard—From intersection 31st and Y, thence s to limits.	Serra Way—From 31st to 34th, 1 s S.
San Antonio Way—From D to H, 1 w 40th.	Sherman Way—From 37th and Y e to Stockton Boul.
San Benito—Colonial Heights.	Slater's Addition—Nw of S P Depot.
San Buena Ventura Way—From 9th to 12th Avs, 1 w Riverside Boul.	Sloat Way—From 20th to 26th, 3 s Y.
San Carlos Way—From 5th to 8th Avs, 1 w 40th.	Solano—Colonial Heights.
San Diego Way—From 5th to 8th Avs, 1 w Stockton Boul.	Sonoma—Colonial Heights.
San Fernando Way—Runs s from Y bet 28th and Franklin Boul.	Stockton Boulevard—From 31st and P se to limits.
San Francisco Boulevard—Colonial Heights.	Sutter Way—From Riverside Boul w, 3 s of Cemeteries.
San Jose Way—From 4th to 8th Avs, 3 w Stockton Boul.	Sutterville Road—From Riverside Boul to Franklin Boul, corresponds to 13th Av.
San Luis Court—From Leese Way n ½ blk.	Tanayah—From Yosemite to Roosevelt, 2 s Stockton Boul.
San Miguel Way—From D to H, 1 e 39th.	Truckee Way—From 32d to 34th, 1 n V.
San Rafael Court—From 5th to 7th Avs, 1 w 42d.	Vallejo Way—From 17th to Freeport Boul, 1 s 4th Av.
Santa Ana—Colonial Heights.	Ventura—Colonial Heights.
Santa Barbara—Colonial Heights.	Vina Vista—Colonial Heights.
Santa Barbara Court—From J to L bet 34th and 35th.	Washington—Colonial Heights.
Santa Clara Way—From 2d to 3d Avs, 1 w 42d.	Weller Way—From Freeport Boul e, 2 s 5th Av.
Santa Cruz Way—From 5th to 8th Avs, 1 e 40th.	Western—From W P Ry e to Franklin Boul, 2 s 14th Av.
Santa Maria—Colonial Heights.	Westmoreland—Now Markham Way.
	Whitney—From 10th to 13th bet Q and R.
	Yale—From 10th to 13th and from 20th to 21st bet X and Y.
	Yosemite—From Stockton Boul, 4 s 14th Av.

SACRAMENTO DIRECTORY CO'S SACRAMENTO CITY DIRECTORY 1923

ABBREVIATIONS

acct accountant	elec electrician	phys physician
add addition	elev elevator	pkr packer
adv advertisement	eng engineer	pres president
agrl agricultural	est estate	prin principal
agt agent	exp express	prop proprietor
apts apartments	expmn expressman	pub publisher
archt architect	ft freight	r rooms
assn association	ft foot	rd road
asst assistant	ft fitter	repr repairer
av avenue	ftr rms.....furnished rooms	rt.....rural free delivery
bet between	furn furniture	S or s.....south
bkbndr bookbinder	furngs furnishings	salsn salesman
bkpr bookkeeper	gds goods	se southeast
bldg building	gen general	sec.....secretary or section
blk block	h.....residence or house	smstrs seamstress
blksmith blacksmith	hdw hardware	solr solicitor
boul boulevard	implts implements	spec special
brklyr bricklayer	ins insurance	sta station
brkmn brakeman	inspr inspector	stmr steamer
carp carpenter	jan janitor	stngr stenographer
cashr cashier	lab laborer	supt superintendent
cbtmkr cabinetmaker	lithogr lithographer	surg surgeon
chauf chauffeur	lndy laundry	sw southwest
civ eng.....civil engineer	mach machinist	tblr teacher
clk clerk	mech mechanic	tel telephone
clnr cleaner	mdse merchandise	telg telegraph
coll college	messr messenger	tkt ticket
colr collector	mfg manufacturing	tmstr teamster
comm commission	mfr manufacturer	tndr tender
comnr commissioner	mi manager	trans transfer
comp compositor	mi mile	trav traveling
cond conductor	mkr maker	treas treasurer
conf confectioner	mkt market	trmr trimmer
contr contractor	N or n.....north	undtkr undertaker
cor corner	ne northeast	uphlstr upholsterer
ct court	nr near	vet veterinary
ctr cutter	nw northwest	v-pres vice-president
dep deputy	opp opposite	vulc vulcanizer
dept department	opr operator	W or w.....west
dist district	orch orchardist	whol wholesaler
div division	pass passenger	whsmn warehouseman
E or e.....east	pharm pharmacist	wks works
	photgr photographer	yd yard

The word street is always understood

FIRM ABBREVIATIONS

Burroughs A M Co.....	Burroughs Adding Machine Co
C C T Co.....	Central California Traction Co
C C & C Co.....	Capital Candy & Cracker Co
C F C A.....	California Fruit Cannery Assn
Cal T & S Bk.....	California Trust and Savings Bank
Chinn-B Opt Co.....	Chinn-Beretta Optical Co
F & M Bk.....	Farmers & Mechanics Bank
F & T Lbr Co.....	Friend & Terry Lumber Co
G G & M Co.....	Globe Grain & Milling Co
Gt W P Co.....	Great Western Power Co
K G & Co.....	Kirk Geary & Co
K-U Co.....	Kimball-Upson Co
L-F Co.....	Latourrette-Fical Co
L McN & L.....	Libby McNeil & Libby
M V D.....	Motor Vehicle Dept
M & D Co.....	Mebius & Drescher Co
N C M P A.....	Northern California Milk Producers Assn
P G & E Co.....	Pacific Gas & Electric Co