

SACRAMENTO DIRECTORY CO'S

Classified Business Directory

1914

Names appearing under headings marked (*) are inserted only by special contract.

Abstracts of Title

BUCKLEY-GERBER ABSTRACT & TITLE CO INC F & M Bank Bldg
(See adv)
PIERCE-BOSQUIT ABSTRACT & TITLE CO 905 6th (See adv)
SACRAMENTO ABSTRACT & TITLE CO 701 I (See adv)

*** Academies and Schools**

(See also Colleges and Schools)
ST JOSEPH'S CONVENT AND ACADEMY (For Girls) (Kindergarten Grammar and Primary in Connection) G cor 9th

Accountants

KLINK BEAN & CO 419 Forum Bldg
LUMBARD & BLAIR 331-3 Forum Bldg (See bottom lines)
MASLIN PRENTISS 3122 2d av
SAFHOLM & SAFHOLM 401 Peoples Bank Bldg
SIMPSON T R 1404 N
Smith S L 421 Ochsner bldg

*** Accountants—Certified Public**

GREENHOOD & JANSEN 405-11
Clunie Bldg 519 Calif San Francisco
KLINK BEAN & CO 419 Forum Bldg
McLAREN GOODE & CO 519 California San Francisco
MASLIN PRENTISS 3122 2d av

*** Acreage**

BAKER H W 2825 35th (See corner cards and Real Est)
FLEMING & WALTER 1026 8th
(See top corner cards)
FOSTER W T CO 2901 35th (See top lines and Real Est)

JOHNS THE FRED J CO 1023 9th
(See top corner cards and Real Est)
RANSOM WALTER LAND CO 201
Peoples Bank Bldg (See bottom lines)

Adding Machines

Burroughs Adding Machine Co 405 J

*** Addressing**

FISHER & FISHER 331 Forum Bldg
(See backbone)
REESE L J 317 Forum Bldg (See adv)

*** Adjustment Companies**

HENRY'S LAW & COLLECTION CO 606 I (See top and bottom ends)
MADSEN A J 1014a 7th (See front cover and Collections)
NATIONAL COLLECTION AGENCY INC 309 Hagelstein Bldg (See back cover and Collections)
SACRAMENTO COLLECTING CO 1014a 7th (See front cover and Collections)
VALLEY ADJUSTMENT & COLLECTION CO 417-19 Ochsner Bldg (See side lines)

Advertising Agents

Bening W F 327 Forum bldg

All Bulletin • Signs • Bill Posters • Distributors • "Ad" Designers

Ely Advertising Co., Inc.

620 L ST.

(See corner cards)
Grimm G H 305 J
Longhurst H G 617 J
Mitchell P A 530 ½ K
Morshead J W 201 Nicolaus bldg

Hardwood FLOOR SROOLS

Their SANITARY merits are unquestionable and need but LITTLE CARE. Cost is very reasonable. They should replace carpets in
Your Home
A. E. Pierson
616 29th St.
Phone Main 1966 Y

Hardman
Ladies'
Tailor

SUITS
To Order
ROOMS 1-2-3-4
718 J

Tel. Main 3462

Hardman

REAL ESTATE



INSURANCE

486

SACRAMENTO DIRECTORY CO'S

1914

Advertising Agents—Contd
VALLEY PUBLICITY BUREAU
504 ½ J (See bottom and side lines)

* **Advertising Counselors**
VALLEY PUBLICITY BUREAU
504 ½ J (See bottom and side lines)

* **Advertising Cuts**
SUTTER PHOTO ENGRAVING CO
919 6th (See opp p 382)
VALLEY PUBLICITY BUREAU
504 ½ J (See bottom and side lines)

* **Advertising Novelties and Specialties**
LARKIN J N & SON 707 Peoples Bank Bldg (See side lines)

Agricultural Implements
(See also Machinery)
CAPITAL IMPLEMENT CO 223 J (See corner cards)
EMIGH-WINCHELL-CLINE CO 308-12 J (See top lines)
SACRAMENTO IMPLEMENT CO 721 J (See corner cards)
Souney E C 2109 P

Air Compressors
Clayton Air Compressor Works 1715 2d
Laidlaw-Dunn-Gordon Co 1715 2d

* **Alfalfa Lands**
BROOKE REALTY CO INC 807 J (See back cover and Real Est)

Ammunition
See Sporting Goods

* **Anthracite Coal**
DORSEY-PARKER FUEL CO 19th cor V (See opp Coal)

Apartment Houses
(See also Furnished Rooms Etc)
Aberdeen Apartments 626 16th
Alexandra Apartments 714 9th
Alta Mira Apartments 1323-25 H
American Cash Apartments 1123 8th
Banksia Apartments 1423-27 8th

Ben Ares Apts 920 M
Berkshire The 1126 ½ 6th
Bird Apartments 529 12th
Bon Air Apartments 1227 ½ J
Camellia Apartments 2007 J
Cannon Apartments 720 F
Carlton Apartments 1620 M
Casa Del Rey Apartments 826 17th
Clifford Apartments 731 O
Dee Apartments 404 12th
Del Paso Apartments 914 12th
Drexel Apartments 626 ½ Q
Dwyer Apartments 1605 J and 925 16th
Elmwood Apartments 600-6 11th
El Palmetto Apartments 2938 34th
Essex Apartments 1426 7th
Evargal The 1003 ½ J
Fayette Apartments 718 9th
Gilman Apartments 427 M
Howe Apartments 1112 11th
Kilborn Apartments 1421 L
La Hermosa Apartments 1418 11th
La Villa Apartments 1617-23 17th
Lucerne Apartments 1010 11th
Marguerite Apartments 729-731 Q
Maydestone Apartments 1005 15th
Mobile Apartments 1323 K
Merriam Apartments 1017 14th
News Apartments 912 6th
Nokomis Apartments 801 F
Park View Apartments 1031 K
Parker The 600 O
St Francis The 10th cor I
Scheld Apartments 1227 28th
Scott Apartments 1326 N
Sutherland Apartments 624-630 10th
Sutter Apartments 1008-14 27th
Thayer Apartments 1228 N

Apiarists
Hauser Casper 2416 14th
Myers Cornelius 3118 Magnolia
Root Jas 1120 22d
Walker L D 1216 X

* **Appraisers of Estates**
JOHNS THE FRED J CO 1023 9th (See corner cards and Real Est)
REED & ELLIOTT 1010 8th (See top lines)

Architects
Bernard J H 3418 Sacto av
WILLONER ALEX 524 Ochsner Bldg

SOUTH SIDE HARRY C. STAUFFER
PHARMACY Prescriptions a Prompt Delivery a Specialty
TEL. MAIN 1720 J 1631 10TH

FOR CUT FLOWERS EAST LAWN CONSERVATORIES

PLANTS AND FLORAL
DESIGNS FOR ALL
OCCASIONS RING UP

1009 8th St. TEL. M 1031
WE CARRY A FULL LINE OF EVERYTHING FOR THE GARDEN

1914

CLASSIFIED BUSINESS DIRECTORY

487

Architects—Certified

Campbell A W 3405 J
Cuff C C 530 Ochsner bldg
Hemmings E C Theatre Diepenbrock
Herold P J 332 Forum bldg
Herold R A 437 Forum bldg
Scharlin F H 412 Forum bldg
Seadler & Hoen 514 Forum bldg
Sellon G C 1005 K

*Architectural Terra Cotta

PHONE DOUGLAS 540
GLADDING, McBEAN & CO
310-317 CROCKER BLDG.
SAN FRANCISCO, CAL.

Art Embroidery

Azevedo Mary S 1016 K

Art Glass

Turnbull C H rear 1229 J

Art Goods

McDowell & Harding 724 K
NIPPON BAZAAR 1207 3d (See p 14)
Sacramento Art Co 1012 9th

Artificial Stone

Sac Building Block Co 2318 R

Artists

Carr Mrs A S 1612 14th
Jackson W F O cor 2d
Maysbark Casimir 1005 K
Morrison Mrs A B 1414 G
Taylor Mrs Louise 1016 K
Wildner I F 718 ½ J

* Artists—Commercial

Art Bulletins - Signs - Bill Posters - Distributors - "Ad" Designers
ELY ADVERTISING CO. Inc.
6TH COR. R

(See corner cards)

SUTTER PHOTO ENGRAVING CO
919 6th (See opp p 382)
VALLEY PUBLICITY BUREAU
504 ½ J (See bottom and side lines)

* Artists' Material

KREBS C H & CO 626 J and 1008 7th

* Asphalt Paving

CLARK & HENRY CONSTRUCTION
CO 512-16 Ochsner Bldg (See top corner cards and p 8)

Assayers

SACRAMENTO ORE TESTING & REDUCTION CO 517 J

Asylums

See Hospitals

* Athletic Goods

KIMBALL-UPSON CO 609-11 K (See front cover)

Attorneys-at-Law

See Lawyers

Auctioneers

Beauchamp W P 1129 J
MACKINDER W A 1023 9th (See side lines)
Western Auction Co 910 11th

* Auditors

KLINK BEAN & CO 419 Forum Bldg
LUMBARD & BLAIR 331-3 Forum Bldg (See bottom lines)

* Auto Pianos

EILERS MUSIC HOUSE 815 J

* Automatic Pianos

EILERS MUSIC HOUSE 815 J

Automobile Clearing Houses

Armour S D 908 D

* Automobile Clothing

KIMBALL-UPSON CO 609-11 K (See front cover)

* Automobile Garages

(See also Garages)

BRADLEY W H & SONS 1015 11th (See side lines)
BUICK GARAGE 1321 K (See bottom lines)
GILARDI & FAURE 707-9 12th
LEE DON 1300-6 K

FOR ABBREVIATIONS

USED IN THIS BOOK

SEE PAGE 23

LUMBARD & BLAIR

TEL. MAIN 4218 Y

331-3 FORUM BLDG.

PUBLIC ACCOUNTANTS AND AUDITORS

1515 Twentieth St. "ROUGH DRY" Tel. Main 131
CASCADE LAUNDRY

TENTH AND R STREETS

Contractors for All Kinds of Building Stone Work

Carlaw Bros.

..WORKS..

GRANITE AND MARBLE

SACRAMENTO

HOTEL DALE

M. E. Miller, Owner
FAMILY HOTEL
 Half Block From N.
 E. Ry. and C. C. T.
 Co. interurban lines
 HALF BLOCK EAST
 OF P. O.
727½ K
 TEL. MAIN 4275

OAK PARK LUMBER & MILLING CO.

LUMBER AND GENERAL MILL WORK
SAND, ROCK, LIME, PLASTER, CEMENT
 TEL. CAPITAL 18. 3526 PARK AV.

488

SACRAMENTO DIRECTORY CO'S

1914

* Automobile Garages—Contd

SUPERIOR GARAGE 1209-15 J (See adv)

* Automobile Lamp and Radiator Repairers

SACRAMENTO COPPER WORKS 2617 D

Automobile Liveryes

AUTO & TAXICAB CO 709 L (See side lines)

BRADLEY'S AUTO LIVERY 1015 11th (See side lines)

Elk J V 5th cor K
 Parker C W Golden Eagle Hotel

SUPERIOR GARAGE 1209-15 J (See adv)

Automobile Manufacturers

Golden West Motors Co 518 Ochsner bldg

* Automobile Painters

BOWMAN CARRIAGE CO 1221-23 I (See corner cards)

BRADLEY W H & SONS 1015 11th (See side lines)

LEE DON 1300-6 K
MEISTER A & SONS CO INC 9th cor D

Automobile Parts Exchanged

O'Neill & Wilcox 2004 J

Automobile Repairers

ALBRIGHT BROS 1112-14 24th
BOWMAN CARRIAGE CO 1221-23 I (See corner cards)

BRADLEY W H & SONS 1015 11th (See side lines)

BUICK GARAGE 1321 K (See bottom lines)

CALIFORNIA MECHANICAL & ELECTRICAL ENGINEERING CO 2906 R

Darwin Bros 1209 J
 Gage & Powell 1110 24th

GILARDI & FAURE 707-9 12th
HART & CEDARHOLM 1611 M

Lambert E H 1420 21st
LEE DON 1300-6 K

MEISTER A & SONS CO INC 9th cor D

Richardson A J 1926 M
 Stroup W W rear 1808 N

SUPERIOR GARAGE 1209-15 J

(See adv)
 Tessman R B 1315 J

* Automobile Spring Mfrs

ALBRIGHT BROS 1112-14 24th
DERMAN A L 1416 21st

* Automobile Storage

BUICK GARAGE 1321 K (See bottom lines)

SUPERIOR GARAGE 1209-15 J (See adv)

Automobile Supplies

Always Air Sales Co 1308 K
 Appleton W E 1215 J

BUICK GARAGE 1321 K (See bottom lines)

Carpenter E H 1123 J
CRAWFORD R T 1418 21st (See adv)

ERNST RUBBER CO 1012 11th (See side lines)

FISK RUBBER CO OF N Y THE 1310-12 K (See top lines)

Goodyear Tire & Rubber Co 1020 11th

Kaster E M 1307 J
KIMBALL-UPSON CO 609-11 K (See front cover)

LEE DON 1300-6 K
 Remick J S 1030 J

Republic Rubber Co 1213 J
SACRAMENTO IGNITION WORKS 1219 K (See adv)

SACRAMENTO IMPLEMENT CO 721 J (See corner cards)

SACRAMENTO RUBBER CO 917 6th (See bottom lines)

SUPERIOR GARAGE 1209-15 J (See adv)

* Automobile Tire Vulcanizers

BOWMAN CARRIAGE CO 1221-23 I (See corner cards)

BUICK GARAGE 1321 K (See bottom lines)

RUSSELL G E 709 L (See side lines)

* Automobile Tires

BUICK GARAGE 1321 K (See bottom lines)

ERNST RUBBER CO 1012 11th (See side lines)

FISK RUBBER CO OF N Y THE 1310-12 K (See top lines)

FANCY STATIONERY

COMMERCIAL STATIONERY

WAHL STATIONERY CO.

PHONE M 373

923 K ST.

OFFICE SUPPLIES

SCHOOL BOOKS



ERNST RUBBER CO.
 Automobile Accessories and Supplies
 VULCANIZING
Miller Tires, Goodyear Tires
 440 BROADWAY, CHICO. 1012-11th St., SACRAMENTO

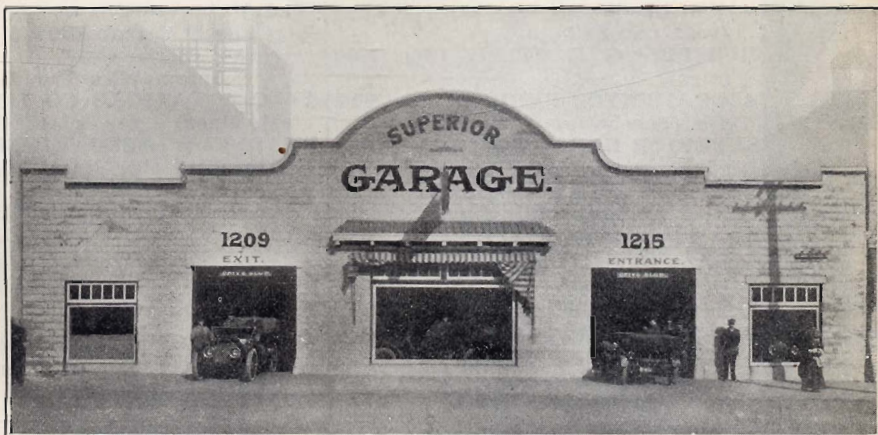
Superior Garage

1209, 1211, 1213, 1215 J St. Two Blocks From the Leading Hotels

GEO. W. HIPPLE, Prop. "WE NEVER CLOSE"

Automobile Supplies and Repairs

Our Repair Department IN CHARGE OF AN EXPERT MECHANIC



My Trouble Car AT YOUR SERVICE DAY OR NIGHT
GASOLINE AND LUBRICATING OILS **Phone Main 644**

PHONE 642

WALLACE WILLIAMS

Sacramento Ignition Works

BATTERY RECHARGING, 75c
UNDER 100 AMPERE HOUR

BATTERY REPAIRING, IGNITION AND LIGHTING SYSTEMS
WIRED, ELECTRIC STARTERS AND GENERATORS
A SPECIALTY

1217 K ST.

SACRAMENTO

R. T. CRAWFORD

MFR. OF

Automobile TOPS

FOR ALL CARS
Seat Covers & Dust Hoods

TEL. M 3988 R

1418 21st St.



Phone Main

235
TAKE A

TAXI

BRADLEY'S



Auto Livery
1015 11th
Phone Main 235

ANGELUS *The Wiley B. Allen Co.*

PLAYER
PIANOS **821 J St.**

LUDWIG
AND
KINGSBURY
PIANOS

490

SACRAMENTO DIRECTORY CO'S

1914

*** Automobile Tires—Contd**

KIMBALL-UPSON CO 609-11 K (See front cover)
RUSSELL G E 709 L (See side lines)
SACRAMENTO RUBBER CO 917 6th (See bottom lines)
SUPERIOR GARAGE 1209-15 J (See adv)

*** Automobile Tops**

CRAWFORD R T 1418 21st (See adv)

*** Automobile Trimmers**

CRAWFORD R T 1418 21st (See adv)

Automobile Trucks

Bulkley M S & Co 1114 10th
GILARDI & FAURE 707-9 12th
King Chas M & Son 1229 7th
LAUPPE J D 1321 K (See bottom lines)

*** Automobile and Carriage Painters**

ALBRIGHT BROS 1112-14 24th

Automobiles

(See also Garages)

Arnold Bros 1210 J
Bekins-Speers Motor Co 1104 K
BRADLEY W H & SONS 1015 11th (See side lines)
CADILLAC AGENCY (Don Lee) 1300-6 K
Casey J S 1906 M
CHALMERS AGENCY 1128 10th
Curson Motor Car Co 2001 M
Fical C A 1926 M
FORD MOTOR CARS 1615 M
Grabe T L 1926 M
Graham & Lamus Co 1217 7th and 711 M
Harvey L B 1110 K
Haynes Auto Sales Co 1225 7th
LAUPPE J D 1321 K (See bottom lines)
LEE DON 1300-6 K
Mannix W J 1229 7th
MEISTER A & SONS CO INC 1405 K
Pate R G 1217 K
PIONEER AUTOMOBILE CO 1128 10th
Richards & Christie 726 L
Sidelinger Philpot & Co 2103 K
Skinner & Elliott 1401 K

SUPERIOR GARAGE 1209-15 J (See adv)

Westlake D C rear 1606 M

*** Automobiles For Rent**

AUTO & TAXICAB CO 709 L (See side lines)
BRADLEY'S AUTO LIVERY 1015 11th (See side lines)

Automobiles—Second Hand

BRADLEY W H & SONS 1015 11th (See side lines)
Buell G F 1230 H
LEE DON 1300-6 K

*** Awnings**

(See also Tents and Awnings)
WHITE'S TENT AWNING & BAG CO 412 L

*** Bad Debt Collectors**

HENRY'S LAW & COLLECTION CO 606 I (See top and bottom ends)
MADSEN A J 1014a 7th (See front cover and Collections)
NATIONAL COLLECTION AGENCY INC 309 Hagelestein Bldg (See back cover and Collections)
SACRAMENTO COLLECTING CO 1014a 7th (See front cover and Collections)
VALLEY ADJUSTMENT & COLLECTION CO 417-19 Ochsner Bldg (See side lines)

*** Baggage Transfer**

GLOBE TRANSFER VAN & STORAGE CO 1011 7th (See Transfer Cos)

Bakers

(See also Confectionery)

Bianchi Jos 2016 H
Born Bros 1015 28th
Bowen F K 2111 J
Cousineau Ovila 1224 7th
Derr Richd 205 D BrodK
Dimitra Bakery 1531 4th
Donsing G H 2300 P
Gemsh Mrs Regina 1401 G
Golden Poppy Bakery K cor 11th
Golden West Bakery 1236 J
Haney Wm 408 12th
Kaesar R G 3206 4th av and 3325 Magnolia
Kenourgios & Karademos 1221 J
Kent & Sons 1315 3d

THE SUNDAY LEADER

Delivered to Any Part of Greater Sacramento, 25c Per Month
LARKIN & SON, Publishers People's Bank Bldg. Phone Main 324

MOREING & FITZPATRICK
Railroad and Excavating Contractors
501-2 OCHSNER BLDG. Telephone Main 985. SACRAMENTO

MARSTON & NEWBERT

BICYCLES AND SPORTING GOODS

Agents **POPE MOTORCYCLE** EXPERT REPAIRING
1017 Ninth St.

1914 CLASSIFIED BUSINESS DIRECTORY 491

Krieger & Hofman 701 7th
Landis C H 2330 K
Nagler C E 1511 20th
Noceti & Weitman 1628 J
Noller & Niebling 523 K
Nuding K E 3322 Sacto av
Pardi Fred 1121 3d
Piaggi Bros 2500 Bonita
Renon Marcel 1219 8th
Schaefer Henry 915 K
Schnetz & Co 124 J
Seifert B C 515 12th
Senn Ernest 1208 O
Stirn Chas 1012 J
Weitman W K 903 U
Zangerle Mrs Louise 722 J

* Balusters

BANTA A J Rear 314 10th (See backbone and p 6)
OAK PARK LUMBER & MILLING CO 3526 Park (See top lines)
SACRAMENTO PLANING MILL & FURNITURE CO 3d cor V (See top lines and p 5)

* Bamboo Goods

NIPPON BAZAAR 1207 3d (See p 14)

Bands and Orchestras

California State Band 1011 15th
Noack's Orchestra 704 K

* Bank Office and Bar Fixtures

BANTA A J Rear 314 10th (See backbone and p 6)
BURNETT & SONS R bet 23d and 24th (See p 6)
CAPITAL CITY CASKET CO 1630 R (See side lines)
OAK PARK LUMBER & MILLING CO 3526 Park (See top lines)
SACRAMENTO PLANING MILL & FURNITURE CO 3d cor V (See top lines and p 5)
VAN HALL CHAS 3d cor X (See p 7)

Banks

CALIFORNIA NATIONAL J nw cor 4th
Capital Banking & Trust Co 700 J
CAPITAL NATIONAL 700 J
Citizens 2729 35th
FARMERS & MECHANICS SAVINGS 1012-14 8th

FORT SUTTER NATIONAL J cor 7th (See p 2)
NATIONAL BANK OF D O MILLS & CO J cor 7th (See front cover)
Nippon 1203 3d
PEOPLES SAVINGS J cor 8th (See p 3)
SACRAMENTO 431 J Ft Sutter Bank 1000 K and 3422 Sacto av
SACRAMENTO VALLEY BANK & TRUST CO 1017 8th

* Bar Fixtures

BANTA A J Rear 314 10th (See backbone and p 6)
BURNETT & SONS R bet 23d and 24th (See p 6)
OAK PARK LUMBER & MILLING CO 3526 Park (See top lines)
SACRAMENTO PLANING MILL & FURNITURE CO 3d cor V (See top lines and p 5)

Barbers

Agalakis Geo 129 K
Azevedo M J 311 S
Barbaria Frank 1205 9th
Beardsley & Graham 527 12th
Berlinger A J 1027 10th
Blakly G W 3025 35th
Blanas Louis 1127 2d
Bonini Ferruccio 118 I
Bowmar F H 1120 4th
Busch John 1510 25th
Bussey F E 909 1/2 K
Butler F J 1114 7th
Caros Andrew 405 K
Christie Geo 1130 5th
Clark S C 1006 1/2 9th
Cobarubia F L 3321 Magnolia
Coffey Jos S P Depot
Cole A H 1027 6th
Combs D M 716 K
Cooper F H 1927 J
Coty E M 516 J
Coulson L S 2101 Bonita
Davis J C 1624 11th
Defrenci Alfonse 227 I
Dias A X 1027 2d
Etherton Wm 3000 35th
Faulkner Thos 326 Forum bldg
Fedeli John 436 2d Brodk
Fegan R C 1227 28th
Ferrara Cyrus 806 21st
Ferrara Frank 628 1/2 I
Gagner G A 922 8th
Gallagher B J 328 K
Gearing E J 931 1/2 K

MAIN 350



High Class
Tailor
FOR
MEN
A LARGE STOCK
OF THE FINEST
AND MOST
EXCLUSIVE
IMPORTED
WOOLENS
STRAUB
907 K

W. J. Frazer
General
Contractor
.. AND ..
BUILDER
Mont Clair Av.
EAST
SACRAMENTO
TEL. CAP. 481 R



BELTS
PACKING
HOSE

Federal TIRES

BOOTS
RAINCOATS
VULCANIZING

V. T. Chambers, Mgr.

Sacramento Rubber Co. Distributors, 917 6th St.

OAK PARK

W. T. FOSTER CO.

Suburban and Farm Property Our Specialty
35th Cor. CYPRESS AV.

Barbers—Contd

George F M 1708 7th
 Glaviano J E 724 E
 Gracia Manuel 1111 5th
 Griffiths Robt Upper Stkn rd nr
 Rose
 Hamm Eugene 1007 J
 Held G C 1322 30th
 Hoefler Alex 2231 10th
 Hunt T F 3504 Cypress
 Julier Frank 1106 10th
 Kehoe N S 2824 30th
 Kelly F W 2005 O
 Koratzky J C 518 K
 Kroner Chas 2004 M
 La Barba J A 1204 7th
 Lesser Benj 1220 ½ J
 Likakis Gust 1111 2d
 Lingard Harry 1008 9th
 Livermore C E 2811 35th
 Lockhart J O 1108 8th
 Lopez Edw 1328 4th
 McLain A R Hotel Sac
 McNair Jas 217 K
 Malotka G A 1927 Q
 Markson Thos 1026 5th
 Metropulos & Blanas 1003 ½ 2d
 Monez M A 724 Oak av
 Moroni Attilio 928 2d
 Murphy J T 307 K
 Nicolosi L L 3605 6th av
 Ninemire D J 624 Oak av
 Peel J W 724 I
 Porlia Matteo 1226 6th
 Potts J D 1005 11th
 Raper Albert 1017 10th
 Rice B D 406 2d Brodk
 Robinson R C 1019 4th
 Rogers Louis 404 J
 Rose W L Jr 1025 5th
 Rose & Strawhecker 800 K
 Rubenstein Henry 227 K
 Russell M S 3210 Sacto av
 Santos Bros 1235 J
 Santos Bros 1006 3d
 Sarrett J S 1311 J
 Sawyer M J 926 ½ J
 Shannon A L 925 3d
 Silva A F 1025 4th
 Silva W D 627 K
 Silveira J S 507 12th
 Smith A W 1307 18th
 Smith F P 227 12th
 Smith M A 2302 O
 Spinosa & Scalora 1128 7th
 Stang Jas 829 2d
 Trabue D L 1428 2d

Vilardi Otavio 920 2d
 Walker A J 923 2d
 Walker J H 1429 D
 Walker T D 1008 ½ 7th
 Walters Peter 1603 J
 Watkins H T 1019 3d
 Weinberger & Soberanes 605 Oak av
 White J B 1013 8th
 Whittaker J B 1408 10th
 Whittaker J E 507 Oak av
 Williams A F 1902 3d
 Wilson Aaron 1006 6th
 Wilson Abraham 1120 10th
 Wixson C J 2328 ½ J
 Zachariah Thorvald 1006 17th

Barbers' Supplies

Deckelman C & E 420 J

Baths

(See also Barbers)

Campbell J A 1206 K
 Inouye Toyo 709 Oak av
**SACRAMENTO RIVERSIDE BATH
 & PARK CO** Riverside rd nr S P
 Crossing
 Takamoto T 1123 ½ 3d

* Battery Recharging

BRADLEY W H & SONS 1015 11th
 (See side lines)
SACRAMENTO IGNITION WORKS
 1219 K (See Autos)

* Belting and Hose

SACRAMENTO IMPLEMENT CO
 721 J (See corner cards)
SACRAMENTO RUBBER CO 917
 6th (See bottom lines)

Bicycle Repairers

Blackman F A 2818 35th
KIMBALL-UPSON CO 609-11 K (See
 front cover)
MARSTON & NEWBERT 1017 9th
 (See top lines)

* Bicycle Tires

FISSK RUBBER CO OF N Y THE
 1310-12 K (See top lines)

Bicycles

Banta F W 1110 J
 Harrison W H Jr 1109 J
 Jones F M 914 9th

W. A. MACKINDER
GENERAL AUCTIONEER
 25 YEARS' EXPERIENCE
 Phone 913
 1023 9TH ST.



**WHAT'S
 YOUR
 LINE**

**?
 IF**

**Your Card
 Were Here
 Everybody
 WOULD
 KNOW**



MRS. FRED MASON, Prop.
Best Work in City
 21ST AND O STS.
 TELEPHONE MAIN 211

NATOMAS ROCK

NATOMAS CONSOLIDATED OF CALIFORNIA

FORUM BLDG. Tel. Main 4500

1914

CLASSIFIED BUSINESS DIRECTORY

493

KIMBALL-UPSON CO 609-11 K (See front cover)
LANGLEY W A 1226 K (See side lines)
MARSTON & NEWBERT 1017 9th (See top lines)

*** Bill Boards**

Art Bulletins - Signs - Bill Posters - Distributors - "Ad" Designers
ELY ADVERTISING CO. Inc.
 6TH COR. R
 (See corner cards)

Bill Posters

Caswell Co 413 J

Art Bulletins - Signs - Bill Posters - Distributors - "Ad" Designers
ELY ADVERTISING CO. Inc.
 6TH COR. R
 (See corner cards)

Billiards and Pool

Anderson H J 3001½ 35th
 Conley Jas 2001 J
CROWN BILLIARD PARLORS 1126 7th (See side lines)
 Fassett T L 2929 35th
 Fitz Gerald & Mack 1019 K
 Glas Philip J 1014½ 7th
 Holloran & Campini 1123 5th
 MacRae G A 717 J
 Shields D J 1107 7th and 629 K
 Smith F G 726½ K
 Wright J F 1016 5th

Bit and Spur Mfrs

Dake W E rear 919 O

Blacksmiths

(See also Horseshoers also Carriage and Wagonmakers)
 Bottaro Fred 211 O
BOWMAN CARRIAGE CO 1221-23 I (See corner cards)
 Carter E L 3401 Sacto av
 Collins J P 3510 Sacto av
 Davis L B Upper Stkn rd cor Vine
 Derman A L 1416 21st
 Dick C C 3010 Upper Stkn rd
 Gostick A H 3326 Sacto av
 Keefe John 1320 K
 Kennedy T M 2214 29th
 Meehan J J 909 12th
 Melvin & Sons 4th cor S
 Mueller Max Schley nr Wolf
 Pope G P 916 23d
 Rickard S T 214 E Brodk

Sacramento Steam Forge & Blacksmith Shop 115 O
 Stearns A E rear 811 F
 Talbot L C Schley nr Cherry
 Winters H J 518 I
 Wirts J A & Son 2030 14th

*** Blacksmiths' Coal**

DORSEY-PARKER FUEL CO 19th cor V (See opp Coal)
SILVA NETHERLAND & CO 1513 Front (See side lines)

*** Blacksmiths' Supplies**

BOWMAN CARRIAGE CO 1221-23 I (See corner cards)
EMIGH-WINCHELL-CLINE CO 308-12 J (See top lines)
 Waterhouse & Lester Co 215 O

*** Blank Book Mfrs**

(See also Bookbinders)

SILVIUS & SCHOENBACKLER 423 J
WAHL STATIONERY CO 923 K (See bottom lines)

*** Blocks—Wood**

DORSEY-PARKER FUEL CO 19th cor V (See opp Coal)

Blue Printers

FORREST BLUE PRINT CO 629 Forum Bldg

Boarding Houses

See Furnished Rooms Etc

Boat Houses

Hutchinson J P 329 Levee Brodk

Boat and Ship Builders

Nunes Bros ft R
 Pankost Boat Supply Co 206 Levee Brodk
 Vladyka F J Brodk

Boilermakers

Phoenix Iron & Boiler Works 21st cor R

*** Bonds**

CARLY J C CO INC 623 J (See corner cards)
JOHNS THE FRED J CO 1023 9th (See corner cards and Real Est)

620 J ST. J.A.McCulland Co. Real Estate



AND SO DO YOU

Valley Adjustment & Collection Co.

COLLECTIONS EVERYWHERE

417-19 OCHSNER BLDG.

TEL. M 2112 J
 H. A. Barnes
 MANAGER



K Cor. 9th. Odd Fellows Temple

Agents for **KRYPTOK LENSES** and **SHUR-ON EYE GLASSES**

**PAUL
OAKLEY**
Hardware
Tools
Cutlery
**SHERWIN-
WILLIAMS**
PAINTS
ELECTRIC
IRONS
SUPPLIES
HOUSE
WIRING
910 J

Hardman

**Ladies'
Tailor**

SUITS
To Order
ROOMS 1-2-3-4

718 J
Tel. Main 3462

Hardman

DRUGS

530 J St.
Cor. 6th

FRANK J. CASEY

PRESCRIPTION
SPECIALIST

494

SACRAMENTO DIRECTORY CO'S

1914

*** Bone Meal**

LEWIS THOS 1916 10th (See p 4)

Bookbinders

Sacramento Book Bindery 309 J
SILVIUS & SCHOENBACKLER
423 J

*** Books—Loose Leaf**

SILVIUS & SCHOENBACKLER
423 J

*** Books and Stationery**

(See also Stationery)
WAHL STATIONERY CO 923 K (See
bottom lines)

Boots and Shoes—Retail

See Shoes

Bottlers—Mineral and Soda Water
Chevalley Albert rear 323 O
Glenn & Brunner 1913 14th
Sacramento Bottling Co 1715 15th
Shasta-Aristo Co 1801 7th

Bowling Alleys

Sabish Curt 909½ K

Box Manufacturers and Dealers

California Pine Box & Lumber Co
1317 Front
Capital Box Factory 2d cor Q

*** Brackets—Wood**

BANTA A J Rear 314 10th (See
backbone and p 6)
BURNETT & SONS (R bet 23d and
24th (See p 6)
SACRAMENTO PLANING MILL &
FURNITURE CO 3d cor V (See
top lines and p 5)

*** Brass Checks**

SLEEPER & STEVER 923 6th (See
Rubber Stamps)

*** Brass Glass and Enameled Signs**

SLEEPER & STEVER 923 6th (See
Rubber Stamps)

*** Brass and Copper Works**

SACRAMENTO COPPER WORKS
2617 D

Brewers

Buffalo Brewing Co 21st cor R
Sacramento Brewing Co 12th cor H

Brick Mfrs and Dealers

Sacramento Clay Products Co 311
Ochsner bldg
Sacramento Sandstone Brick Co 1217
8th

*** Brick—Pressed and Fire**

PHONE
DOUGLAS
540

GLADDING, McBEAN & CO
310-317 CROCKER BLDG.
SAN FRANCISCO, CAL.

*** Brick and Stone Contractors**

(See also Contractors—Brick and
Stone)
LASTRA F P 2426 V (See p 8)

*** Bridge and Wharf Builders**

(See also Contractors—Bridge)
CLARK & HENRY CONSTRU-
TION CO 512-16 Ochsner Bldg
(See corner cards and p 8)
HAVILAND DOZIER & TIBBETTS
606-8 Nicolaus Bldg (See corner
cards)

JENKINS & WELLS 3530 Y
ROSS CONSTRUCTION CO 535-7
Forum Bldg

Brokers—Merchandise

Deibert G A 903 Front
Duffy F J 1011 5th
Lynn J B 325 Forum bldg

*** Brokers—Real Estate**

BAKER H W 2825 35th (See corner
cards and Real Est)
BROOKE REALTY CO INC 807 J
(See back cover and Real Est)
JOHNS THE FRED J CO 1023 9th
(See corner cards and Real Est)

Brokers—Stocks and Bonds
PRUDENTIAL FUNDING CO 504 F
& M Bank Bldg

*** Brooders**

SMITH F F & CO 1006 J (See front
cover)

*** Builders' Hardware**

(See also Hardware)
EMIGH-WINCHELL-CLINE CO 308-
12 J (See top lines)
OAKLEY PAUL 910 J (See side
lines and Hardware)
SACRAMENTO IMPLEMENT CO
721 J (See corner cards)



J. D. LAUPPE, PROP.

GARAGE
REPAIRING, ACCESSORIES, ETC.
PHONE M 599

DISTRIBUTER
BUICK AUTOS
AND TRUCKS
1321 K St.

**Real Estate
Insurance
Rentals**

REED & ELLIOTT

**MONEY
LOANED
LEGAL
PAPERS
EXECUTED**

1010 EIGHTH ST. Phone M 233

1914

CLASSIFIED BUSINESS DIRECTORY

495

*** Building Contractors**

(See also Carpenters Etc also Contractors—Building)

OKITA A Y 311 L

Building Material

BREUNER JOHN CO 600-608 K
Cady Foster 20th cor R
Cain T E 1207 K

NATOMAS CONSOLIDATED Forum
Bldg (See top lines and Contrs—
(Crushed Rock)

OAK PARK LUMBER & MILLING
CO 3526 Park (See top lines)

SACRAMENTO IMPLEMENT CO
721 J (See corner cards)

SANTA CRUZ PORTLAND CEMENT
CO 404 Peoples Bank Bldg

STANDARD PORTLAND CEMENT
CORPORATION 404 Peoples Bank
Bldg

Warner E S 1023 10th

*** Building Stone**

CARLAW BROS 10th cor R (See
side lines and Marble Works)

*** Building Superintendents**

RUTAN W L 1704 O

Building and Loan Associations

Sacramento Bldg & Loan Assn 724 J

*** Bulbs**

EAST L A W N CONSERVATORIES
1009 8th (See top lines)

*** Burial Vaults**

CAPITAL CITY CASKET CO 1630 R
(See side lines)

*** Business Chances**

BROOKE REALTY CO INC 807 J
(See back cover and Real Est)
PLUMMER HARRY CO 1006½ 7th

*** Business Colleges**

ATKINSON'S SACRAMENTO BUSI-
NESS COLLEGE 1303 J
HEALD'S BUSINESS COLLEGE
1121 9th and San Francisco (See
backbone and opp p 202)

*** Business Systems**

KLINK BEAN & CO 419 Forum Bldg
LUMBARD & BLAIR 331-3 Forum
Bldg (See bottom lines)

SAFHOLM & SAFHOLM 401 Peoples
Bank Bldg

Butchers

See Meat Markets

Butchers' Supplies

Blair J N & Co 1009 Front

Butter Eggs and Cheese

See Creameries

Cabinetmakers

(See also Furniture)

Holt A H rear 1618 7th

OAK PARK LUMBER & MILLING
CO 3526 Park (See top lines)

SACRAMENTO PLANING MILL &
FURNITURE CO 3d cor V (See
top lines and p 5)

VAN HALL CHAS 3d cor X (See
p 7)

Cafeterias

See Restaurants

*** Camping Outfits**

KIMBALL-UPSON CO 609-11 K (See
front cover)

Cancer Specialists

Shirley J H & Co 2810 S

Canners—Fruits and Vegetables

Calif Fruit Canners Assn 611 G
Central California Canneries Front
cor P
Libby McNeill & Libby 31st cor P

Carbide

Union Carbide Sales Co 1531 Front

*** Card Systems**

SILVIUS & SCHOENBACKLER
423 J
WAHL STATIONERY CO 923 K
(See bottom lines)

Carpenters Contractors and Builders

Averill L A 21 Cluness
Barton Louis 902 L
Bender P F 1619 G
Book E W 2911 H
Braun P J 1516 22d
Brown Edw 711 F
Burns Jos 2708 1st av
Chatterton Bros 2111 28th
Cippa Bros 314 21st



HIGH GRADE CLOTH COVERED
CASKETS
UNDERTAKERS' SUPPLIES
17th Cor R. Tel. M 1273

Carlaw Bros. TENTH AND R STREETS
IMPORTERS OF
Scotch and all other Eastern Granites

H. D. MILLARD

1623 O ST.

Tel. Main 3509

CONTRACTOR

FOR ALL KINDS OF

Grading ^{and} Excavating

Phone Main

402

TAXI

Geo. Russell, Prop.
Auto & Taxicab Co.
709 L St.

SACRAMENTO
CASH
CHECKS

ARE A PROFIT SHARING PROPOSITION
75 MERCHANTS GIVE THEM ON ALL
CASH PURCHASES. A FILLED BOOK IS
WORTH \$5.00 IN MERCHANDISE AT
JOHN BREUNER CO'S STORE

496

SACRAMENTO DIRECTORY CO'S

1914

Carpenters Etc—Contd

Contell J H 2028 J
 Cummins A T 2708 J
 Cummins J H 2708 J
 Eads J P 1200 D
 Earle H M 3028 Magnolia
 Ettel C J 1515 23d
 Feagan W T 3209 23d
 Foley Guy 3740a Madrone
 Frazer W J 615 Mont Clair
 Fritzsche R M 1615 Q
 Gray C A 2830 I
 Gross E G 3114 East
 Guth C J 1516 27th
 Harris J E 1114 P
 Harvie G E 2212 T
 Hayes Geo Hotel Land
 Hite L E 1812 L
 Hogan John Hotel Clayton
 Holdener A F 522 1/2 M
 Hook G E 718 18th
 Hopkinson C J 1318 25th
 Houston J G 2705 O
 Jenkins D C Rincon nr Upper Stkn rd
 Johnson E G 2822 H
 Johnson I L 1219 Clark
 Johnson Thos 2921 W
JOHNSTON T W 2000 I (See p 7)
 Juergenson E C 801 F
 Keating W C 327 Forum bldg
 Kennedy W M 3330 Orange
 Kilborn O M 1421 L
 Koch Carl 3330 Cornell
 Leoni Peter 1415 P
 Lindgreen H A 3730 Cypress
 Lucas J A 1604 V
 McDougall T A 2712 1st av
 McKay G W 1018 T
 McKenzie M F 1126 T
 McKoy W D 826 17th
 McNairn W A 1615 25th
 Ma Bee T G Rincon nr Manzanita
 Martin & Son 1217 19th
 Mathews Construction Co 334 Forum
 bldg
 Meinardi H S 2120 N
 Milgate C J 2114 I
 Montgomery W J 2211 H
 Moore L C 1414 19th
 Morrill J M E 1st 715 23d
 Morrill & Clark Building & Con-
 struction Co 1011 Y
 Noble J L 310 O
 Norris A W 409 21st
OKITA A Y 311 L
 Parker F G No Sacto
 Pendergast Gene 1313 22d

Powell Robt & Co 2811 T
 Reed P F 2613 28th
 Ruitter R H 2715 2d av
 Ryden H A 1223a 2d
 Sanders R H 1804 Monterey
 Shadinger M H 2101 10th
 Siller Bros 1614 13th
SILVA BROS 415 11th (See p 5)
 Smith R M 2017 18th
 Strong Ira 1704 1/2 F
 Sydenstricker E E 2318 I
 Thielbahr & Bender 1619 G
 Tracy J Q 1807 O
 Universal Construction Co 431 Och-
 ner bldg
 Vanina C A 2022 M
 Van Zee Anthony 2707 I
 Wall Wm No Sacto
 Wendt G A 2130 M
 Whitney F J 615 11th
 Wright H R 1415 13th
 Wygant J H 1227 I
 Wynn Henry 1022 27th

* Carpenters' Tools

OAKLEY PAUL 910 J (See side lines and Hardware)

Carpet Cleaners

Ackerman F P rear 909 U
 Maunder J R 600 M
 Rivett H W 1004 J
 Shooks A L 109 12th

Carpet Weavers

Hinkel Henry rear 1613 P

* Carpets Oilcloth and Matting

BREUNER JOHN CO 600-608 K
CAPITAL FURNITURE MFG CO
 616 J
KEEBLE-HOLLAND INC 1027 K
 (See top lines)

* Carriage Painters

(See also Painters—Carriage)
BOWMAN CARRIAGE CO 1221-23 I
 (See corner cards)

Carriage Trimmers

BOWMAN CARRIAGE CO 1221-23 I
(See corner cards)

Carriage and Wagonmakers

(See also Blacksmiths)
ALBRIGHT BROS 1112-14 24th
 Bennett Henry 520 12th

GROWN



Billiard
Parlors

FINEST IN
NORTHERN
CALIFORNIA

L. Caen, Prop.

1126 7th

Hotel Clayton Bldg.

Tel. 1120 R

\$2 HATTERS HATS

1010 7TH LUXE 1007 3D

THE BIG HARDWARE STORE

EMIGH-WINCHELL-CLINE CO.

308-312 J ST. Thomson-Diggs Old Quarters Phone M 4331

1914 CLASSIFIED BUSINESS DIRECTORY 497

BOWMAN CARRIAGE CO 1221-23 I
 (See corner cards)
 Childs J R 1014 17th
 Heilrath & Son 915 8th
 Meister A & Sons Co Inc 9th cor D
 Mills Arthur 215 O
 Romani Albert 230 P
 Schwalenberg & Pierini 1209 6th
 Seitz W O 1214 30th

Carriages and Wagons

Bennett W F 522 12th
BOWMAN CARRIAGE CO 1221-23 I
 (See corner cards)
CAPITAL IMPLEMENT CO 223 J
 (See corner cards)
EMIGH-WINCHELL-CLINE CO 308-12 J
 (See top lines)

Cash Checks

SACRAMENTO CASH CHECK CO
 1st Floor John Breuner Co (See top lines)
 Sacrametno Merchants Coupon Co
 214 Hagelstein bldg

*** Cash Register Repairers**

LANGLEY W A 1226 K (See side lines)

Cash Registers

National Cash Register Co 1131 9th

Casket Manufacturers

CAPITAL CITY CASKET CO 1630 R
 (See side lines)

Caterers

Johnson B A 1801 G

*** Cement**

(See also Lime Plaster and Cement)
SANTA CRUZ PORTLAND CEMENT CO 404 Peoples Bank Bldg
STANDARD PORTLAND CEMENT CORPORATION 404 Peoples Bank Bldg

*** Cement Contractors**

(See also Contractors—Cement and Concrete)
CLARK & HENERY CONSTRUCTION CO 512-16 Ochsner Bldg
 (See corner cards and p 8)
LASTRA F P 2426 V (See p 8)

Cemeteries

B'nai Israel J nr 31st
 City Cemeteries Y cor 10th and J cor 31st
EAST LAWN Schley av Office 1009 8th
 Helvetia J cor 31st
 Masonic Riverside rd nr Y
 Odd Fellows Lawn Riverside rd nr Y
 St Joseph's 21st nr Y

*** Centrifugal Pumps**

SACRAMENTO IMPLEMENT CO 721 J (See corner cards)

*** Cereals**

PHOENIX MILLING CO 12th cor C (See top lines)

*** Certificates of Title**

PIERCE-BOSQUIT ABSTRACT & TITLE CO 905 6th (See Abstracts)

*** Certified Accountants**

KLINK BEAN & CO 419 Forum Bldg
MASLIN PRENTISS 3122 2d av

*** Cesspool and Vault Cleaners**

LEWIS THOS 1916 10th (See p 4)

*** Charcoal**

DORSEY-PARKER FUEL CO 19th cor V (See opp Coal)
SILVA NETHERLAND & CO 1513 Front (See side lines)

*** Chattel Loans**

CHENOWETH W W 309 Hagelstein Bldg
GERMAN AMERICAN LOAN CO 308-9 Peoples Bank Bldg
GREENE J T 302 Bryte Bldg

Chemists

Commercial Chemical Co 904 J

*** Chimney Pipe—Terra Cotta**

GLADDING, McBEAN & CO
 310-317 CROCKER BLDG.
 SAN FRANCISCO, CAL.

Chimney Sweeps

Heinz Chas 1307 K
 Mack J N 1119 6th
SACRAMENTO IMPLEMENT CO 721 J (See corner cards)

YOU CAN'T COVER
 the World with a postage stamp, nor can you cover the BUYING PUBLIC without proper representation in your CITY DIRECTORY

SILVIUS & SCHOEN-BAKLER

GENERAL

Book Binders
Paper Rulers

AND

Lithographers

423 J ST.

LOOSE LEAF DEVICES

CARD SYSTEMS

PAMPHLET BINDING

Society Badges

Gold Lettering

AUTO & CARRIAGE PAINTER R. F. CHARLEVILLE

PAINTER Rear 2019 O - Tel. Main 1845 R

**SACTO
PUMP
MFG. &
SUPPLY
CO.**
Electric, Gas
OR
Gasoline
Pumping
Plants
Installed
1800 R

**Auto
Carriage
AND
Wagon
Building
Repairing
AND
Painting
ALBRIGHT
BROS.**
1112-14
24th Street
TEL. 1196 R

*Draperies
Rugs
Furniture
Wall Paper
Decorative Lamps*

KEEBLE- HOLLAND

Only Firm in North-
ern California De-
voted Exclusively to
the Interior Decor-
ation of the Home

INC.

1027-1029 K ST.

498

SACRAMENTO DIRECTORY CO'S

1914

*** Chinaware**

NIPPON BAZAAR 1207 3d (See
p 14)

Chiropodists

Fletcher R J 1120 ½ J
Flood Mrs M I 2315 C
Katz H H 721 K
McEntyre J M 430 Ochsner bldg
Pepon Margaret A 531 Forum bldg
Wesner Mrs Albertenie 810 G

Chiropractors

Adkins Robt 2007 J
McKeown Mrs A H 1501 K
Sacramento Chiropractic Sanitarium
2007 J

Christian Science Practitioners

Bonnell Rev B F 415 Ochsner bldg
Bradner Mrs C H 705 Peoples Bank
bldg
Bradner E H 705 Peoples Bank bldg
Cooper Mrs I C 1609 K
Cothrin Mrs E J 705 Peoples Bank
bldg
Dargitz Mrs C M 402 Ochsner bldg
Gregg Elizabeth 705 Peoples Bank
bldg
Hayford Mrs E W 705 Peoples Bank
bldg
Reilley Mrs Leone 402 Ochsner bldg
Tuley E S 415 Ochsner bldg

Cider Manufacturers

Turner F A 2916 G

Cigar Manufacturers

Clemens H J rear 309 17th
Garibay Simon 1406 9th
Grande Carlos 511 Oak av
Jefferson & Molesworth 1008 9th
Johnson Bros 1019 J
Knowles J G 825 I
McCabe Thos 718 ½ J
Moll Bros 219 K
Smith E W 1725 13th
Starr F C 1422 J
Von Hatten G S 1118b J

Cigars and Tobacco—Retail

(See also Confectionery and Fruit—
also Grocers)
Appleby R O 423 K
Barr G W lobby Forum bldg

Behrens F S 720 K
Berger Arnold 624 K
Blanco Angel 918 2d
Bloomberg Bros 1021 2d and 716 K
Boles Chas 731 J
Carlin J J 301 J
Christ H B 1017 10th
Clark C F 415 K
Cohen Isidor 406 J
Criswell W J 1011 8th
Davis C H 300 J and 308 K
Doyle C F 730 K
Dunn J D 418 J
Egan Bros Co 830 J
Farias A J 500 K
Fitzgerald J N 908 K
Foster Jos 130 K
Fowler E W 726 J
Genshlea J G 507 K
Ghilarducci Bernard 817 2d
Hallauer E J 501 K
Hammond E B 927 K
Hawks J M 305 K
Hurd & Truman 708 806 and 931 K
Inglis Walter 812 K
Jacobs T S 624 J
Lapique John 1027 5th
McMellon John 228 K
Martin J R 812 J
Marvin C E 1126 7th
Miller A S 318 K
Morgan J J 1120 3d
Nason Wm 926 J
Posner Henry 914 K
Posner & Kueny 930 K
Rainey M J 807 7th
Raney W E 911 2d
Reynolds W W 119 K
Rotholz Caesar 405 K
Ruth J E 625 K
Samuel Manuel 800 K and 701 J
Silberstein C A A 431 K
Spear R C 1001 2d
Stathapolos Thos 130 J
Stevenson A J 826 J
Stuart T A 207 K
United Cigar Stores Co 731 K
Wilson J N 700 K
Wilson Thos 901 2d
Wolf H C 710 J

Cigars and Tobacco—Wholesale

Capitol Tobacco Co 908 6th
Ginsberg Saml 206 J
Warren B L 1117 J
Ziegler O W 823 ½ 7th

Valley Publicity Bureau
Photo Engraving & Art
Advertising
504 ½ J St.



GEO. W. MARTIN & SON

Builders and General Contractors

Office and Residence,
1217 19th St.

1914

CLASSIFIED BUSINESS DIRECTORY

499

*** Circular Letters**

FISHER & FISHER 331 Forum Bldg
(See backbone)
REESE L J 317 Forum Bldg (See
adv)

L.J. Reese Public
Stenographer

Notary :: MULTIGRAPH CIRCULAR LETTERS
Mimeographing and Typewriting
TELS. { M 3243 J 315-317 FORUM BLDG.
M 1670 L

*** City Property**

BROOKE REALTY CO INC 807 J
(See back cover and Real Est)
CARLY J C CO INC 623 J (See
corner cards)
FOSTER W T CO 2901 35th (See
top lines and Real Est)
JOHNS THE FRED J CO 1023 9th
(See corner cards and Real Est)
McCLELLAND H A CO 620 J (See
side lines)
REED & ELLIOTT 1010 8th (See
top lines)
ROBERTSON-GOVAN CO 1025 8th
(See top lines)

Civil Engineers and Surveyors

Boyd J C 1007 8th
BUTLER D D 209 Bryte Bldg
Furley H J 401 Nicolaus bldg
HAVILAND DOZIER & TIBBETTS
606-8 Nicolaus Bldg (See corner
cards)
Jenkins M A 3530 Y
Peck F F 1315a F
PHINNEY CATE & MARSHALL 420
Forum Bldg

REYNOLDS & WHITMAN 530 For-
um Bldg

Clairvoyants

Forona Madame 731 N
Renfroe Mrs Margaret 504 J

Cleaners and Dyers

Baldwin G A 2201 N
BON TON CLEANERS 912 L (See
adv)
Boyle Bros 2921 35th
Brooks Saml 2329 I
California Expert Cleaners 1910 Q
Dart & Merrill 909 1/2 K and 1011a
9th
DUCHEZ JEROME 1016 23d (See
Dyers and Cleaners)
Dunn Walter Golden Eagle Hotel
Eaton B D 1720 16th
Gelb Max 705 I
Gerber & Knoll 1008 11th
Isaac Robt 904 7th
Johnson & Peck 1218 5th
King & Bond 902 8th
March Clothing Renovatory 1207 J
and 1714 28th
Michaels Sydney 419 1/2 K
Mullick J S 1313 J
Norton G P 1505 10th
Osuga K 1431 4th
Peters & Wight 1207 9th
Schindler John 612 L
STAR DYEING & CLEANING
WORKS 1417 3d (See p 12)
Steen H A 2330 J
THOMAS F PARISIAN DYEING &
CLEANING WORKS 1217 J (See
front cover)
Thomas W G 2510 P
Weidenman C E 2318 J
Welch Mrs M A 427 12th

*Ladies' and Gents' Garments Cleaned
Dyed and Repaired*

*Ostrich Feathers and Boas Cleaned
Dyed and Curled*

The Bon Ton

French Dry Cleaning and Steam Dye Works

Ladies' Dainty Garments Our Specialty. Work Called For and Delivered
H. J. MARTIN, Prop. Phone Main 1766 Y 912 L ST.

SPRINGFIELD FIRE & MARINE INS. CO. Of Springfield, Mass.

Represented by **REED & ELLIOTT** PHONE M 233 1010 8th St.



PHONE MAIN 3349 Y 1226 K ST.



Agent EXCELSIOR Auto Cycle

LANGLEY**BICYCLES
UMBRELLAS, KEYS**

PRINTING
J. N. LARKIN & SON
PEOPLES BANK BLDG.
BOOK AND JOB
ADVERTISING NOVELTIES
PHONE M 324