

The F. THOMAS PARISIAN DYEING & CLEANING WORKS

R. C. KEENE, MANAGER

Telephone, Main. 2589 J

1012 TENTH STREET

1909
SACRAMENTO CITY AND COUNTY—CLASSIFIED 813

SACRAMENTO CITY AND COUNTY Classified Business Directory

1909

ABSTRACTS OF TITLES.

Buckley J J Co, 601 I.
Dray B L, 1005 K.
Pierce-Bosquit Abstract & Title Co,
718 J.
SACRAMENTO ABSTRACT &
TITLE CO, 701 I. (See adv.)

ADDING MACHINES.

MNFRS AND DEALERS.

Burroughs Adding Machine Co, 527
J.
SACRAMENTO LITHOGRAPH CO,
305 J. (See opp p 579.)

H. M. LaRue, Jr.

John R. LaRue

Sacramento Abstract & Title Co.

701 I St.

Records Searched and Abstracts
of Title Made

*ACADEMIES AND SCHOOLS.

(See also Colleges and Schools and
Misc.)
HOWE'S ACADEMY & BUSINESS
COLLEGE, 1028 J. (See left cen-
ter lines and p 19.)

*ACCOUNTANTS.

(See also Public Accountants.)

COOPER, TEMPLE & CO, Certi-
fied Public Accountants, Chicago,
First National Bank bldg; Mil-
waukee, Wells bldg; St Paul,
Germania Life bldg; Minneapolis,
Lumber Exchange bldg.

ADVERTISING AGENTS.

Longhurst Henry, 617 J.
Morshead J W, 610½ K.

*ADVERTISING NOVELTIES AND SPECIALTIES.

HOWE'S ACADEMY & BUSINESS
COLLEGE, 1028 J. (See left cen-
ter lines and p 19.)
LARKIN J N & SON, 307 J.. (See
left top lines.)
Madden John, 2322 M.
SACRAMENTO SPECIALTY CO,
1006 4th.

H. P. HARDMAN LADIES' TAILOR

ROOMS 1, 2, 3 AND 4, 718 J STREET (UP-STAIRS)

PHONE: MAIN 2179 L

A. VAN ZEE General Contractor
...and Builder...
2707 Eye Street Phone, Main 802
Sacramento, Cal.

HELP in all Nationalities Furnished Skilled and Unskilled LABOR

Private
Detective
Agents

Confidential
Investigations
of all kinds

Rates
Reasonable
Capital
Employment
&
Information

Bureau
904 ½
Second Street
Sacramento, Cal.
Phone, Main 1751J

SUTER-

HEV-

ENER

MILL

&

MNFG.

CO.



Mill Work

Office

Store

Bank and

Bar

Fixtures

Doors

Windows

Job Work

Refriger-

ators

Lumber



Designs

..AND..

Estimates

Furnished



1914-1930

SECOND

STREET

Phone, Main 663

G. W. BEATON

ELECTRICAL CONTRACTOR

Motors Rented. Motor Repairing. New and Second-Hand Motors and Electric Supplies and All Kinds of Electrical Wiring

RES. PHONE, MAIN 2330 L

PHONE, MAIN 1847 J

1102 J Street, SACRAMENTO, CAL.

1909

S14

SACRAMENTO DIRECTORY CO'S.

*ADVERTISING SIGNS, NOVELTIES AND CALLENDERS.

SACRAMENTO LITHOGRAPH CO, 305 J. (See opp p 579.)

AGRICULTURAL IMPLEMENTS. (See also Machinery.)

Baker & Hamilton, 101 J.
Bowman Carriage Co, 1109 J.
JOHN DEERE PLOW CO, 221-225 J. (See left top lines.)
Sacramento Implement Co, 721 J.
Schaw-Batcher Co The, 209-211 J.
Souney Bros, 2109 P.
STUDEBAKER BROS CO, 221-225 J. (See left top lines.)
Thomson Diggs Co, 308 J.

ALFALFA LANDS.

BROOKE REALTY CO (Inc), 618 J. (See back cover and p 14.)

AMMUNITION. See Sporting Goods.

AMUSEMENTS. See p 57.

*ANIMAL AND WILLOW CHARCOAL.

PACIFIC GUANO AND FERTILIZER CO THE, 2d and Bristol, Berkeley, Cal. (See opp p 514.)

APARTMENT HOUSES. (See also Furnished Rooms.)

Alta Mira Apartments, 1323 H.
Colonial The, 700 L.
El Phoedora, 1300 10th.

APIARISTS.

Hauser Casper, 1327 Y.
Meyer Irving, 3130 Magnolia av.

ARCHITECTS.

CAMPBELL A W, 528 1/2 J.. (See opp p 141.)
Herold R A, 501 Bryte bldg.
Schardin F H, 610 1/2 K.
Seadler & Hoen, 610 1/2 K.
Sellon & Hemmings, 5 1/2 Stoll bldg.
WALTERS ANNA C, 1821 28th.

*ARCHITECTURAL IRON.

MARTIN GEORGE W & SONS, 1005 4th and 1217 19th. (See left side lines and p 10.)

ART GOODS.

Field & Walton Inc, 706 K.
Hinkson & McClatchy, 1021 6th.
McDowell & Harding, 726 K.

*ARTESIAN WELLS.

SACRAMENTO TUBULAR WELL Co.. (See right side lines and p 17.)

*ARTIFICIAL STONE MANUFACTURERS.

CENTRAL CALIFORNIA CEMENT CONSTRUCTION CO, 431 K and 3008 F. (See left side lines and p 10.)

ARTISTS.

Fay Nellie, 1115 O.

ARTISTS' MATERIALS.

Krebs C H & Co, 626 J and 1108 K.

*ASPHALT PAVING.

SACRAMENTO CEMENT & SUPPLY CO, 21 Stoll bldg. (See left center lines.)

ASSAYERS.

Alexander F F, 610 I.

ASYLUMS AND HOSPITALS.

See p 36.

ATHLETIC GOODS.

See Sporting Goods.

ATTORNEYS-AT-LAW.

See Lawyers.

AUCTIONEERS.

Sherburn W H, 424 J.
Simmons D J, 1006 J.

AURISTS.

See Oculists and Aurists.

AUTOMOBILE GARAGES.

ARNOLD BROS, 1309-1315 J.. (See left bottom lines.)

THE INVINCIBLE WHITE STEAMER



ARNOLD BROS.

..AGENTS..

1309-1315 J STREET

We are also Gas and Gasoline Engiae Experts

PHONE, MAIN 1711 R

EAST LAWN CEMETERY The Most Beautiful Spot in Sacramento

PERPETUAL CARE GUARANTEED

OFFICE, 605 J STREET

SACRAMENTO

1909

SACRAMENTO CITY AND COUNTY—CLASSIFIED 815

AUTOMOBILE GARAGES

Continued.

CAPITOL MACHINE & AUTO CO,
1211 J. (See adv.)

CHARLEVILLE & LANGNER, 2720
M. (See right side lines and p
19.)

MAXWELL AUTO GARAGE, 709
L. (See right bottom lines and
adv.)

Veach F H, 1217 K.

Elliott, Ehrhardt & Rhoades, Elk
Grove.

*AUTOMOBILE RENTING.

ARNOLD BROS, 1309-1315 J.. (See
left bottom lines.)

CAPITOL MACHINE & AUTO CO,
1211 J. (See adv.)

CHARLEVILLE & LANGNER, 2720
M. (See right side lines and p
19.)

MAXWELL AUTO GARAGE, 709
L. (See right bottom lines and
adv.)

*AUTOMOBILE REPAIRERS.

ARNOLD BROS, 1309-1315 J. (See
left bottom lines.)

CAPITOL MACHINE & AUTO CO,
1211 J. (See adv.)

CHARLEVILLE & LANGNER, 2720
M. (See right side lines and p
19.)

MAXWELL AUTO GARAGE, 709
L. (See right bottom lines and
adv.)

*AUTOMOBILE SPRING MNFRS.

CAPITOL MACHINE & AUTO CO,
1211 J. (See adv.)

*AUTOMOBILE STORAGE.

ARNOLD BROS, 1309-1315 J.. (See
left bottom lines.)

CAPITOL MACHINE & AUTO CO,
1211 J. (See adv.)

CHARLEVILLE & LANGNER, 2720
M. (See right side lines and p
19.)

MAXWELL AUTO GARAGE, 709
L. (See right bottom lines and
adv.)

AUTOMOBILE SUNDRIES AND SUPPLIES.

ARNOLD BROS, 1309-1315 J.. (See
left bottom lines.)

CAPITOL MACHINE & AUTO CO,
1211 J. (See adv.)

CHARLEVILLE & LANGNER, 2720
M. (See right side lines and p
19.)

Kimball-Upson Co. 609-611 K.

MAXWELL AUTO GARAGE, 709
L. (See right bottom lines and
adv.)

PHILLIPS DRAYAGE & WARE-
HOUSE CO, 1523-1531 Front.
(See right center lines and adv.)

*AUTOMOBILE TIRE VULCAN-IZING.

CAPITOL MACHINE & AUTO CO,
1211 J. (See adv.)

MAXWELL AUTO GARAGE, 709
L. (See right bottom lines and
adv.)

AUTOMOBILES.

ARNOLD BROS, 1309-1315 J.. (See
right bottom lines.)

CAPITOL MACHINE & AUTO CO,
1211 J. (See adv.)

Peerless Kitchen Boilers
Garwood Steam Gas Grates
James' Combination Sinks
A. M. AUBERTUS
AGENT
507 J STREET
Hours, 1 to 2 p.m.

Carlaw Bros.
GRANITE AND MARBLE
..WORKS..
Contractors for All Kinds of Building Stone Work
TENTH AND R STREETS
SACRAMENTO

Capital City Commercial College 1015 Teath St., Sacramento
G. A. PIERCE, PRINCIPAL

MODERN, UP-TO-DATE

1 Year, \$75.00 6 Months, \$50.00 3 Months, \$27.50 1 Month, \$10.00 Phone, Main, 1968 Y



R. J. BECKER

BECKER & FOSTER
Oak Park

SUBURBAN
..AND..
FARM LANDS
Our Specialty

OFFICE:
Thirty-Fifth St.
and Cypress Ave.
OAK PARK



W. T. FOSTER

IVY HAIR TONIC

Will Positively
Grow Hair on

ALL BALD HEADS

Except Scars and
Scalds

Stops
Falling Hair

Prevents
Baldness

Cures
Dandruff

L. E. JODOIN
918 Sixth St.

Kindling
Coke
Charcoal

Wood and Coal

Manuel Jacinto
330 U Street
PHONE, MAIN 1954 J

816

1909
SACRAMENTO DIRECTORY CO'S.

AUTOMOBILES!



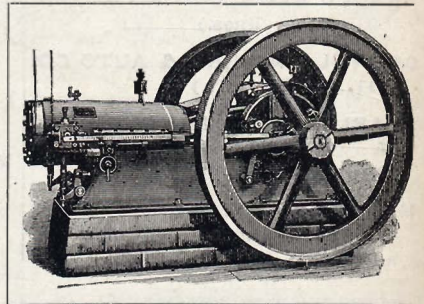
Automobile Livery. New and Second-hand Cars For Sale
General Machine Shop Work. Casings and Tubes vulcanized. Batteries and Coils repaired. Accessories, Gasoline, Oils, Greases, Pres-to-lite Tanks, Etc., always on hand. Manufacturing of Automobile Springs a Specialty.

Agents For FORD and ELMORE

GASOLINE ENGINES

We are Agents for the
FOOS GAS and GASOLINE ENGINES

which we consider the Best
Engine now on the market
regardless of price.



CAPITOL MACHINE & AUTO CO.

1211-1215 J STREET
OPEN DAY AND NIGHT

SACRAMENTO, CAL.
TELEPHONE MAIN 644

Bath & Nauman FUNERAL DIRECTORS
AND EMBALMERS
1214 K STREET PHONE MAIN 218
INVALID CARRIAGE SERVICE DAY AND NIGHT

CALIFORNIA AMERICAN CLEANING AND DYE WORKS

IN CONNECTION WITH CASCADE LAUNDRY

PHONE, MAIN 131

Gentlemen's Work and Ladies' Woolen Skirts a Specialty

1909

SACRAMENTO CITY AND COUNTY—CLASSIFIED 817

AUTOMOBILES—Continued.

CHARLEVILLE & LANGNER, 2720 M. (See right side lines and p 19.)

MAXWELL AUTO GARAGE, 709 L. (See right bottom lines and adv.)

*AWNINGS AND TENTS.

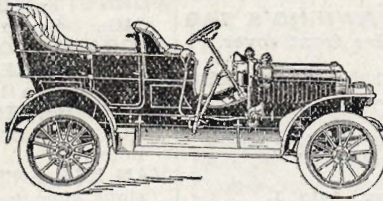
(See also Tents and Awnings.)

WHITE'S TENT, AWNING & BAG CO, 1216 6th. (See front cover.)

*BAD DEBT COLLECTORS.

NOW IS THE TIME

For you to think about Your New **AUTO**



Come in and let us demonstrate the many merits of

Simply Perfect

Perfectly Simple **"THE MAXWELL"** **THE MAXWELL AUTO GARAGE CO.**

709-711 L Street

AUTOS FOR HIRE AT ALL HOURS

Phone Main 722

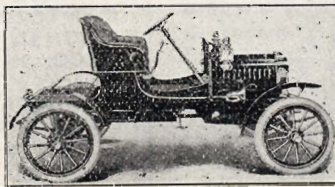
PHILLIPS DRAYAGE & WAREHOUSE Co, 1523-1531 Front. (See right center lines and adv.)

HENRY'S LAW AND COLLECTION CO, 606 I. (See top and bottom edges.)

PHILLIPS DRAYAGE & WAREHOUSE CO.

—AGENTS FOR—

Chalmers-Detroit, Thomas Flyers, Oldsmobile Automobiles



Chalmers-Detroit 30 H. P.

Five Passenger, Selective Sliding Gear Transmission. Three Speeds Forward and Reverse, Annular Ball Bearing Throughout. 110 Inch Wheel Base. 2000 Pounds. 5-50 Miles Per Hour. Price

\$1500 F. O. B. Factory

1523-31 Front Street

Sacramento, Cal.

J. GARROLL GRANITE AND MARBLE WORK OF ALL DESCRIPTIONS

Monuments, Headstones, Tablets, Cemetery Inclosures, Etc. Building Stone, Street Curb, Crosswalks, Etc. PHONE, MAIN 1403 Y 2431 TENTH STREET, N. E. Cor. Tenth and Y, Sacramento, Cal.

The Fort Garage

Charville & Langner Proprietors

You make no mistake having your car repaired by us

WE CAN PROVE IT TRY US

Vulcanizing, Storage Batteries Charged

Second-Hand Cars

Sundries and Supplies

28th and M Streets

Tel. Main, 1412 Y

FOR BARGAINS

..IN..

FURNITURE

New or Second-Hand

Stoves
Carpets
Matting
Rugs
Linoleum

Or Anything for

The House

— SEE —

J. W. BIRD

917 Seventh

N. Tracy Carpenter
Road Rear of
Race Track
Lock Box No. 14

..White Leghorn Chickens..
We Make a Specialty of Hatching Young
Chickens From Our Thoroughbred Stock
CHOICE EGGS DELIVERED TO FAMILIES

H. L. MARTIN
GEO. W. MARTIN & SONS
BUILDERS AND GENERAL CONTRACTORS
Office, 1005 Fourth Street ♦ Residence, 1217 Nineteenth Street
SEE PAGE 10

STUDEBAKER

BUGGIES, WAGONS, AUTOMOBILES

221-225 J STREET

JOHN DEERE PLOW CO.

FARM IMPLEMENTS

GASOLINE ENGINES

221-225 J STREET

1909

518

SACRAMENTO DIRECTORY CO'S.

***BAGGAGE TRANSFER.**

McLAUGHLIN DRAYING CO, 115 K. (See left side lines and under Transfer Companies.)
MERCHANTS' SPECIAL DELIVERY AND TRANSFER CO, 1113 5th. (See left center lines.)

***BAGS AND BURLAPS—WHOLESALE.**

WHITE'S TENT, AWNING & BAG CO, 1216 6th. (See front cover.)

BAKERS AND CONFECTIONERS—RETAIL.

(See also Confectioners; also Cracker Mnfrs.)

Ann Arbor Bakery, 1012 J.
Binse Albert, 2610 Carnegie av.
Born Bros Bakery, 1015 28th.
Depner Mrs R E, 3319 Sacramento av.

Gemsch Joseph, 1401 G.
Grotsch & Schaefer, 915 K.
Hasert Emil, 1236 J.
Kaeser R G, 206 4th av.
Kent M F & Sons, 1315 3d.
Metz George, 2300 P.
Noceti & Weitmann, 1221 J.
O'Brien A W, 1012 J.
Pacific Grove Bakery, 1014 9th.
Pioneer Bakery, 124 J.
Rice Bros, 1014 9th.
Schnetz H S & Co, 124 J.
Senn Ernest, 1531 4th.
South Side Bakery, 903 U.
Squaglia & Gori, 1121 3d.
Vienna Bakery, 915 K.
Weitman W K, 903 U.
Zangerle Mrs Louise, 722 J.
Coons Mrs Emma, Elk Grove.
Howes L H, Elk Grove.
Showers Silas, Folsom.

***BALUSTERS.**

BANTA A J, rear 314 10th.. (See backbone.)
BURNETT & SONS, R bet 23d and 24th. (See p 5.)
SACRAMENTO PLANING MILL & FURNITURE CO, 6th cor R. (See left bottom lines.)

BANDS AND ORCHESTRAS.

Churchill Orchestra, 424 M.
De Coe's Orchestra, 1220 K.

Greer's Band and Orchestra, 1011 15th.

Noack's Orchestra, 704 K.
WALTERS' ORCHESTRA, 1006½ 7th. (See left side lines.)

***BANK AND OFFICE FIXTURES.**

BANTA A J, rear 314 10th.. (See backbone.)
BURNETT & SONS, R bet 23d and 24th. (See p 5.)
SACRAMENTO PLANING MILL & FURNITURE CO, 6th cor R. (See left bottom lines.)
SUTER-HEVENER MILL & MNFG CO, 1912-1930 2d. (See left side lines.)
VAN ZEE ANTHONY, 2707 I. (See right side lines and p 8.)

***BANK AND OFFICE STATIONERS.**

SACRAMENTO LITHOGRAPH CO, 305 J. (See opp p 579.)

BANKS AND BANKERS.

(See also Miscellaneous.)

CALIFORNIA NATIONAL BANK, J nw cor 4th. (See back cover.)
FARMERS & MECHANICS SAVINGS BANK, 330 J.
FORT SUTTER NATIONAL BANK THE, 7th sw cor J. (See inside front cover.)
GOETHE BANK, 411 J.
JAPANESE BANK OF SACRAMENTO (Inc), 1007 3d.
NATIONAL BANK OF D O MILLS & CO, 200 J. (See inside back cover.)
NIPPON BANK, 1203 3d.
PEOPLE'S SAVINGS BANK, 400 J. (See p 3.)
SACRAMENTO BANK, 431 J.

***BAR FIXTURES.**

BANTA A J, rear 314 10th.. (See backbone.)
BURNETT & SONS, R bet 23d and 24th. (See p 5.)
SACRAMENTO PLANING MILL & FURNITURE CO, 6th cor R. (See left bottom lines.)
SUTER-HEVENER MILL & MNFG CO, 1912-1930 2d. (See left side lines.)

Strand & Vining ELECTRICAL CONTRACTORS

524 OAK AVENUE

Phone, Main 2432.R

REAL ESTATE
(CITY AND COUNTRY)

INSURANCE

LOANS

MORTGAGES

F. R. M. BLOOMER

504½ J STREET

OFFICE OF J. G. MARTINE

PHONE, MAIN 2087R

MEMBER OF THE CHAMBER OF COMMERCE

NOTARY PUBLIC

SOIL EXPERT

HORTICULTURAL

ADVISER

1909

SACRAMENTO CITY AND COUNTY—CLASSIFIED 819

***BARBED WIRE.**

PERKINS & CO, 820 J and 1601 M.
(See bookmark.)

BARBERS.

Adam Anton, 825½ 2d.
 Allen B A, 804 21st.
 Barbaria Frank, 1016 9th.
 Berlinger Antone, 1027 10th.
 Blakley G W, 35th nr Park av.
 Busch J W, 1006 17th.
 Clark S C, 217 and 529 K.
 Cook Thomas, 1429 28th.
 De Costa Joseph, 829 2d.
 Dias J X, 1027 2d.
 Fancher & Johnson, 928 2d.
 Ferrara Frank, 1029 J.
 Frederick H W, 1927 Q.
 Fujimoto T, 1126 3d.
 Fukuda S, 1106 4th.
 Gallagher B J, 328 K.
 Garner F M, 1027 6th.
 Hamai K, 1107 3d.
 Hamatake H, 1112 3d.
 Hashimoto Y, 309½ L.
 Hayes G H, 318½ L.
 Hirose S, 221 I.
 Hoefler Alexander, 818 K.
 Hough G E, 1022 5th.
 Howe Louis, 1508 25th.
 Hunt T F, 1004 J.
 Ichimori J, 1221 3d.
 John Paul, 1116 2d.
 Jones C S, 1227 28th.
 Julier Frank, 924 K.
 Kavanaugh E C, 1023 4th.
 Kelly F W, 2003 O.
 Kimura M, 229 L.
 Kuramoto K, 221½ L.
 Legacy & Fink, 516 J.
 Lesser Benjamin, 1104 J.
 Livermore C E, 3321 Magnolia av.
 Lockhart J A, 2231 10th.
 Lopez Edward, 1328 4th.
 Lovegren & Combs, 716 K.
 Marino Nicholas, 920 8th.
 Martin Damon, 1026 4th.
 Martin J B, 1019 3d.
 Matsuyeda S, 207 L.
 Michelangelo L, 319 J.
 Mirikitani T, 303 L and 1114 4th.
 Moroni Attilio, 628 I.
 Nagao T, 227½ L.
 Nakamura N, 1123 3d.
 Nicolosi L, 2914 35th.
 Okinago B, 323½ L.
 Padovan Nicholas, 1428 2d.

Papas A D, 1106½ 4th.
 Paratore Gioachino, 319 J.
 Peel J W, 923 7th.
 Perry Christopher, 1825 S.
 Petit Henry, 1407 Front.
 Rogers Louis, 404 J.
 Rose & Murphy, 307 K.
 Rose & Strawhecker, 1022 8th.
 Rubenstein Henry, 227 K.
 Saiki U, 1213 3d.
 Sakamoto T, 1106 4th.
 Santos Bros, 1128 J.
 Santos J S, 1006 3d.
 Sarratt Joseph, 905 18th and 1003 4th.
 Sasaki K, 1018 4th.
 Sasaki S, 217 L.
 Sawyer M J, 926 J.
 Schroeder V E, 816 J.
 Silva M J, 35th cor Park av.
 Silva W D, 524 J.
 Silveira J S, 429 12th.
 Smada S, 221½ I.
 Suga I Co, 1213 4th.
 Sunata I, 1126 3d.
 Tokiki T, 220 L.
 Tong Yee Chong, 914 3d.
 Tong Yee Hing, 910 3d.
 Valine & Valine, 302 K.
 Venezia John, 1204 7th.
 Vilardi Ottario, 1127 2d.
 Walker A J, 923 2d.
 Walters Peter, 1105 15th.
 Waters F R, 510 K.
 White J B, 1008 7th.
 Whittaker J E, 1009 8th.
 Williams Henry, 1624 11th.
 Wilson Abraham, 904 K.
 Wixon C J, 1027 9th.
 Zachariah Thorvald, 1307 18th
 Carr John, Elk Grove.
 Borges A A, Folsom.
 Smith C A, Folsom.
 Tong L A, Folsom.
 Gross Martin, Isleton.
 Watson F H, Isleton.

BARBERS' SUPPLIES.

Deckelman C & E, 422 J.

BASKET MANUFACTURERS.

Florin Basket Co (Inc), 124 K.
 Florin Basket Co, Florin.

***BATHROOM HEATERS.**

AUBERTUS A M, 507 J... (See right side lines and p 17.)



LANGLEY
 BICYCLES
 UMBRELLAS, KEYS
 Agent Excelsior Auto Cycle
 1025 Tenth St.
 Phone, Main 2828 R



Pure Water Guaranteed. All Wells Cased With Screwed Pipe
Well Boring Tubular Well Co.
 Sacramento
 900 L STREET
 C. D. STRAIT, Manager

NAVLET BROS. Leading Seedsmen
520 K STREET

WHOLESALE AND RETAIL DEALERS OF
FLOWER AND VEGETABLE SEEDS

... Conservatory of Music...

Superior Advantages for the Study of Music in All Branches

LAURA C. WALTERS, DIRECTOR

1006 1/2 Seventh Street - - - SACRAMENTO, CAL.

Central California Cement Construction Co.

Manufacturers of Best Artificial Cement Stones

3008 F STREET

A. E. BLIVEN

TELEPHONE MAIN 2024L

PLANS AND SPECIFICATIONS FURNISHED

CONTRACTOR AND BUILDER

Jobbing Promptly Attended To

2711 V STREET

820

1909
SACRAMENTO DIRECTORY CO'S.

BATHS.

(See also Barbers.)

Gardiner Mrs H C, 1126 7th.
Tacomoti F, 224 L.
Whitaker F H, 807 J.

*BEANS.

McMILLIN-GORDON CO, 227-231
J. (See right side lines.)

*BEDDING.

BIRD J W, 917 7th.. (See right side lines.)

*BICYCLE AGENTS, DEALERS
AND REPAIRERS.

LANGLEY W A, 1025 10th.. (See right side lines.)

RITCHIE G A, 1030 J.. (See right top lines and p 16.)

SNELL CYCLERY, 1030 J.. (See right top lines and p 16.)

*BICYCLE REPAIRERS.

LANGLEY W A, 1025 10th..)See right side lines.)

RITCHIE G A, 1030 J.. (See right top lines and p 16.)

SNELL CYCLERY, 1030 J.. (See right top lines and p 16.)

BICYCLES AND BICYCLE SUPPLIES.

Banta Laura, 825 J.
Harrison W H, 1010 J.
Jones F M, 1015 9th.
KIESSIG HARRY R CO, 515 J.
(See under Motorcycles.)

Kimball-Upson Co, 609 K.
LANGLEY W A, 1025 10th. (See right side lines.)

RITCHIE G A, 1030 J. (See right top lines and p 16.)

SNELL CYCLERY, 1030 J. (See right top lines and p 16.)

BILL POSTERS.

Caswell Co, 824 L.

BILLIARDS AND POOL.

Baker T E, 516 J.
Gavdas John, 1116 2d.
Glas P J, 1014 7th.
Hará H W, 308 L.
Mizumaca T, 226 L.

Nakatake K, 1218 3d.
Narahara H, 909 4th.
Oshima & Iwatsubo, 1216 3d.
Sakamoto S S, 1022 3d.
Takeuchi T, 1224 3d.
Tsuchiya M, 219 L.
Urabe H, 312 L.
Yamada K, 225 L.
Yoshida N, 1209 3d.

BLACKSMITHS.

(See also Horseshoers; also Carriage and Wagon Mnfrs.)

Bennett Henry, 516 12th.
Carter E L, 3405 Sacramento av.
CECHETTINI CARRIAGE WORKS
1305-1313 2d. (See under Carriage and Wagon Mnfrs.)

Childs J R, 2201 N.
De Merritt & Trumpler, 404 L.
Greibitus J T, 1821 19th.

HALL J W, Rose av, Oak Park.
(See p 12.)

Jackson Thomas, 1112 24th.
Keefe John, 922 11th.
Lightfoot & Gostick, 3326 Sacramento av.

Meehan J J, 909 12th.
Melvin H G, 418 I.
Plate L H, 1917 S.
Seitz & Sons, 1216 30th.
Shevlin & Stearns, 1209 6th.
Shumate D L & Son, 2717 Lower Stockton rd.

Winters H J, 215 Upper Stockton rd.
Woods James, 713 S.
Walther C F, Bruceville.
Stroup Harry, Clay Station.
Conley Charles, Conley.
Bedwell George, Elk Grove.

Castello L H, Elk Grove.
Castello L F, Elk Grove.
Kelly J M, Elk Grove.
Whitman H C, Florin.
Claus George, Folsom.
Cole C E, Folsom.

Darling Charles, Folsom.
Ferguson E W, Folsom.
Hart & Manseau, Folsom.
Perry Manoah, Folsom.
Smith A J, Folsom.
Smith F J, Folsom.
Schoech Herman, Franklin.
Hansen N P, Isleton.
Parenti Luigi, Isleton.
Brown W A, Michigan Bar.
Felkner D W, Perkins.
Jacobson J L, Sheldon.

FRANCISCO'S OAK HALL

THE FINEST ROADSIDE INN
ON THE PACIFIC COAST



Phone, Suburban 766

OPEN ALL NIGHT
HOTEL ACCOMMODATIONS
ENTERTAINERS

Hot Chicken Dinners a Specialty
END OF RIVERSIDE DRIVE - SACRAMENTO, CAL.

FOR GO TO
MACHINERY JOSHUA HENDY IRON WORKS
 MANUFACTURERS

75 FREMONT STREET, - SAN FRANCISCO, CAL.

1909
 SACRAMENTO CITY AND COUNTY—CLASSIFIED 821

***BLACKSMITHS' SUPPLIES.**

CARRIAGE HARDWARE CO THE,
 1006 5th.
WATERHOUSE & LESTER, 709-
 715 J. (See under Hardware.)

BLANK BOOK MNFRS.
 (See also Book Binders.)

SACRAMENTO BOOKBINDERY,
 309 J.
SILVIUS & SCHOENBACKLER,
 423 J. (See p 13.)

BLUE PRINTS.

Capitol Blue Print Co, 527 J.

BOARDING HOUSES.

(See also Furnished Rooms.)
 Beckwith Mrs M J, 721 I.
 Coupe Mrs Anna, 1431 D.
 Craddock Mrs Ida, 1123 I.
 Harada S, 1221 3d.
 Haramoto J, 1208 2d.
HOTEL HINOMOTO, 323 M.
 Ishimura M, 217 I.
 Iwatate G, 209 L.
 Kinokuniya Co, 213 I.
 Lee K E, 1317 4th.
 Matsuhara & Yura, 323 M.
 Matsuura S, 213 I.
 Muramoto A, 322 M.
 Nakashima T, 310 M.
 Radovich V M, 2015 2d.
 Sambo J, 309 M.
 Sollers Mrs L A, 711 H.
 Takahashi R, 1307 3d.
 Takemoto Y, 219 I.
 Tayama T, 308 M.
 Yoshida N, 1209 3d.
 Yura K, 323 M.
 Zell Mrs K R, 710 G.

***BOARDING STABLES.**

(See also Livery, Boarding and Sale Stables.)

TELEGRAPH FEED & LIVERY STABLES, 1222 J. (See opp p 591.)

***BOILERS—PEERLESS KITCHEN**

AUBURTUS A M, 507 J. (See right side lines and p 17.)

***BONDING INSURANCE.**

REED & ELLIOTT, 1015 4th. (See right center lines.)

***BONE ASH AND MEAL.**

PACIFIC GUANO AND FERTILIZER CO THE, 2d and Bristol, Berkeley, Cal. (See opp p 514.)

***BOOK CASE AND WRITING DESK DOORS.**

AUBURTUS A M, 507 J. (See right side lines and p 17.)

BOOKBINDERS.

SACRAMENTO BOOKBINDERY,
 309 J.
SILVIUS & SCHOENBACKLER,
 423 J. (See p 13.)

BOOKSELLERS AND STATIONERS.

Capital Book Store, 805 J.
 Doane S A, 202 K.
 Jennie Mrs I J, 429 K.
 Linticum J F, 817 K.
 Morris I F, 406 J.
 Purnell W F, 723 K.
 Talbot J H, 706 J.
 Walrath L L, 805 J.
 Mitchell Mrs M J, Elk Grove.

BOOTBLACKS.

Anastasopivlon & Anastasopivlon, 308 K.
 Bortano J D, 1016 9th.
 Borzon Joseph, 500 J.
 De Martini G B, 1023½ 2d.
 Dimos Peter, 708 K.
 Dunn Paul, 917 2d.
 Gallette & Velardi, 1008 9th.
 Hoffman Otto, 905 2d.
 Lambert J E, 221 K.
 Minico Thomas, 1019½ 3d.
 Peter Joseph, 1026 4th.
 Poulos George, 914 J.
 Reid R E, 418 J.
 Tabares Julio, 230 J.
 Verelli Salvatore, 614 J.

BOOTS AND SHOES—RETAIL.

(See also Shoemakers.)

Bloom Max, 508 D.
 Braddock & De Land, 702 K.
 Caselli Ansono, 527 K.
 Johnson W I, 518 K.
 Lavenson's Inc, 628 K.
 Lewis Sample Shoe Parlor, 9 Stoll bldg.
MILES HIRAM, 511 K. (See left side lines.)

OLD TAVERN WINES
 MATURITY AND PURITY GUARANTEED
A. P. SCHELD & CO.
 Non-Rectifiers
 Twenty-Eighth and M Sts.
 SACRAMENTO

Sutter Hospital
 INCORPORATED
 Situated on Southeast Corner of Twenty-First and T Sts.
 UNDER HOMEOPATHIC MANAGEMENT

Sacramento Planing Mill and Furniture Co. (Inc.) Mill Work

Sash, Doors, Frames, Screens, Mouldings, Etc.

TELEPHONE, MAIN 1493 R

SIXTH AND R STREETS

**Pacific
Coast
Investment
Company**

**Country
Lands**

**City
Property**

**Farm
Loans**

Insurance

507

J STREET

**T. J. O'Kelly
President**

**STORAGE
LEITCH**

**Drayage
..AND..
Warehouse
Co.**

**1215 FRONT ST.
Phone, Main 564**

S. F. McANEAR ..LIFE.. INSURANCE

Gerber Building, 610 K Street

Phone, Main 1952 J

1900

822

SACRAMENTO DIRECTORY CO'S.

BOOTS AND SHOES—RETAIL.

Continued.

Morgan Shoe Co (Inc), 724 K.
Pickett-Atterbury Co, 611 J.
Regal Shoe Co, 724 K.
Taylor T F, 1013 7th.

BOTTLERS.

Holdaway Bruce, 1731 8th.
Schnerr C & Co, 310 K.

***BOTTOM LANDS.**

BROOKE REALTY CO, 618 J.
(See back cover and p 14.)

BOWLING ALLEYS.

Annen J J, 614 J .

***BOX DEALERS.**

CAPITAL BOX FACTORY, 1700 2d,
(See backbone.)

BOX MANUFACTURERS.

California Pine Box & Lumber Co,
1317 Front.

CAPITAL BOX FACTORY, 1700 2d,
(See backbone.)

***BRACKETS—WOOD.**

BANTA A J, rear 314 10th. (See
backbone.)

**BURNETT & SONS, R bet 23d and
24th.** (See p 5.)

**SACRAMENTO PLANING MILL &
FURNITURE CO, 6th cor R.** (See
left bottom lines.)

BREWERS.

Anheuser Busch Brewing Assn, 1015
7th.

Buffalo Brewing Co, 21st, 22d, Q
and R.

Pabst Brewing Co, 1015 6th.

Ruhstaller Brewery, 12th ne cor H.
Sacramento Brewing Co, 12th ne cor
H.

BREWERS' AGENTS.

Haub John, 1015 6th.

Nelson C A, 1420 J.

Saemann Carl, 1015 7th.

***BRICK AND STONE CON-
TRACTORS.**

(See also Contractors, Brick and
Stone.)

HALEY J W, 1615 18th. (See right
center lines and p 10.)

HENLEY O A & SON, 1621 13th.
(See p 9.)

HERNDON G L, 914 T. (See right
center lines and p 9.)

MARTIN GEORGE W & SONS,
1005 4th and 1217 19th. (See left
side lines and p 10.)

BROKERS.

Craft & Holland, Masonic Temple.

Davies C H, 529 J.

Heisen A C, 624 I.

**HENRY'S LAW & COLLECTION
CO, 606 I.** (See top and bottom
edges.)

McDowell S B, 1015 4th.

NOBLE W R & CO, 1015 8th. (See
front cover and opp Real Es-
tate.)

Poissant A A, 42 Stoll bldg.

Thompson C N, 803 J.

***BROKERS—REAL ESTATE.**

BROOKE REALTY CO (Inc), 618 J.
(See back cover and p 14.)

BROOM MANUFACTURERS.

Hopkins A S Co, Front cor L.

***BUILDERS' HARDWARE.**

(See also Hardware.)

OAKLEY PAUL, 920 J. (See right
side lines and under Hardware.)

***BUILDING BLOCKS—CEMENT.**

**CENTRAL CALIFORNIA CEMENT
CONSTRUCTION CO, 431 K and
3008 F.** (See left side lines and
p 10.)

***BUILDING CONTRACTORS.**

(See also Contractors—Builders.)

BLIVEN A E, 2711 V. (See left
top lines and p 6.)

**FRAZER W J, Box 69G Mont Clair
av nr J st rd.** (See p 6.)

HENDRICKS & VITELLE, 915 26th.
(See p 6.)

JOHNSON I L, 32d cor M. (See
left bottom lines.)

MARTIN GEORGE W & SONS,
1005 4th and 1217 19th. (See left
side lines and p 10.)

**NORTHERN CALIFORNIA CON-
STRUCTION CO, 706½ K.** (See
right center lines and p 7.)

SMITH R M, 2017 18th. (See right
side lines and p 7.)

STAHL G B, 1104 E. (See p 8.)

VAN ZEE ANTHONY, 2707 I. (See
right side lines and p 8.)

C. R. CLARK MANAGER SHASTA WOOD CO.

Full Measure Quick Delivery Reasonable Prices

Upper Stockton Road

PHONE BLACK 871

Sacramento, Cal.

WHITE ROSE WHEAT FLAKES

FOR YOUR BREAKFAST

WHITE ♦ PURE ♦ DELICIOUS

AT YOUR GROCER'S

1909

SACRAMENTO CITY AND COUNTY—CLASSIFIED 823

*BUILDING FIXTURES.

AUBURTUS A M, 507 J. (See right side lines and p.17.)

*BUILDING MATERIAL AND SUPPLIES.

SACRAMENTO CEMENT & SUPPLY CO, 21 Stoll bldg. (See left center lines.)

WESTERN BUILDERS' SUPPLY CO, Capitals and Brackets, Carvings, Grilles, Ornamental Mouldings, Paper, Roofing, Tile (Metal Wainscoting), Joist Hangers, Metal Ceilings 680 Mission, San Francisco, Phone Kearny 1991. (See San Francisco Classified list)

BUILDING AND LOAN ASSOCIATIONS.

Fidelity Building & Loan Assn, 1015 8th.
Sacramento Building & Loan Assn, 412 J.

*BUSINESS AGENTS.

SHIBUYA C Y, 328 L. (See opp p 591.)

*BUSINESS CHANCES.

BROOKE REALTY CO Inc, 618 J. (See back cover and p 14.)

NOBLE W R & CO, 1015 8th. (See front cover and opp Real Estate.)

PACIFIC COAST INVESTMENT CO, 507 J. (See left side lines.)

STEUDE P H, 704 J. (See right top lines and p 14.)

*BUSINESS COLLEGES.

CAPITAL CITY COMMERCIAL COLLEGE, 1015 10th. (See right bottom lines.)

COYNE TRADE SCHOOL, 230 8th. San Francisco.

HEALD'S BUSINESS COLLEGE (S F). (See backbone and opp p 316.)

HOWE'S ACADEMY & BUSINESS COLLEGE, 1028 J. (See left center lines and p 19.)

BUTCHERS.

See Meat Markets.

BUTCHERS' SUPPLIES.

Blair J N & Co, 115 K.

*BUTTER, CHEESE AND EGGS—WHOLESALE.

McMILLIN-GORDON CO, 227-231 J. (See right side lines.)

CABINET MAKERS.

(See also Furniture.)

COFFMAN F H, 1225 6th. (See right side lines.)

Holt Alfred, alley rear 827 N.

SUTER-HEVENER MILL & MNFG CO, 1912-1930 2d. (See left side lines.)

*CAMP FURNITURE.

WHITE'S TENT, AWNING AND BAG CO, 1216 6th. (See front cover.)

*CANOPIES.

WHITE'S TENT, AWNING AND BAG CO, 1216 6th. (See front cover.)

CARPENTERS.

See Contractors—Carpenters.

*CARPENTERS' TOOLS.

OAKLEY PAUL, 920 J. (See right side lines and under Hardware.)

Capital City Commercial College

1015 TENTH ST. SACRAMENTO G. A. PIERCE, Principal

MODERN; UP-TO-DATE

6 Months, \$50.00; 3 Months, \$27.50; 1 Month, \$10.00

PHONE: MAIN 1968Y

Central Planing Mill (Inc.) General Mill Work

OFFICE, STORE AND BANK FIXTURES

Seventeenth. Corner R Street

Phone, Main 2392 R

1515 Twentieth Street
Cascade Laundry
Telephone, Main 131

Represented by
E. H. McKee
1025
Fourth Street
Phone, Main 1926 R

Springfield Fire & Marine Ins. Co.
Of Springfield, Mass.

Represented by
REED & ELLIOTT
1015
Fourth Street
Phone, Main 233

THE SUNDAY LEADER

Delivered to any part of the City or Oak Park at 25 cents per month
LARKIN & SON, Publishers - - - 307 J Street

Fine Photos
 Portraiture and View
 Work of All Kinds
1007 K STREET

Tonge
 Successor to W. D. Kilborn



SACRAMENTO BURNER & OIL CO. INC. PHONE, MAIN 2827 J
 Office 1009 Tenth St. J and K
 H. L. NELSON, Pres. **CONTRACTING ENGINEERS**
 DEALERS IN **HYDRO CARBON LAMPS**
Oil Burners and Oil Burning Plants of Every Description

824 1909 SACRAMENTO DIRECTORY CO'S.

CARPET CLEANERS.

GREAT WESTERN DYE WORKS,
 818-820 R. (See back cover.)
 Higbie W H, 1900 N.
 Rivett's Carpet Cleaning Works,
 1237 P and 13th nw cor U.
 Sacramento Compressed Air Clean-
 ing Co, 1237 P and 13th nw cor
 U.
 Steinmeyer Henry, 909 U.

CARPETS. OILCLOTH AND MAT- TING.

BIRD J W, 917 7th. (See right side
 lines.)
BREUNER JOHN CO, 600-608 K.
 Campbell C M, 411-413 K.
 Ingram & Bird, 617 K.
 Locke G W & Son, 316 J.

CARRIAGE PAINTERS.

Bowman Carriage Co, 1221 I.
 Kinsman R T, 1024 K.

CARRIAGE TRIMMERS.

Annereau G W, 1235 J.
 Baer & Copp, 1109 9th.

CARRIAGE TRIMMINGS.

Carriage Hardware Co The, 1006 5th

CARRIAGE AND WAGON MNFRS AND DEALERS.

(See also Blacksmiths.)

Bowman Carriage Co, 1221 I.
 Brown Simeon, 1100 K.
 Brusck C H, 920 13th.
CECHETTINI CARRIAGE WORKS,
 1305-1313 2d. (See adv.)

Heilrath & Sons, 915 8th.
JOHN DEERE PLOW CO, 221-225
 J. (See left top lines.)
 Meister A & Sons Co (Inc), 404 9th.
STUDEBAKER BROS CO, 221-225
 J. (See left top lines.)
 Thomson-Diggs Co The, 308 J.
 Bauer G A, Folsom.

CASH CHECKS.

SACRAMENTO CASH CHECK CO,
 2d floor John Breuner Co, 600-608
 K. (See right top lines.)

CASH REGISTERS.

DONNELL A I, 129 J. (See left
 side lines.)
GLOBE REGISTER CO, 129 J. (See
 left side lines.)
 National Cash Register Co, 527 J.

*CAT FISH—SACRAMENTO RIVER.

AMERICAN FISH CO, 714 J. (See
 right center lines and under Fish.)
TONG SUNG CO, 916-918 3d. (See
 under Fish.)

CATERERS.

Johnson B A, 1801 G.

*CEMENT.

(See also Lime, Plaster and Ce-
 ment.)

**SACRAMENTO CEMENT & SUP-
 PLY CO,** 21 Stoll bldg. (See left
 center lines.)

*CEMENT CESSPOOLS.

**CENTRAL CALIFORNIA CEMENT
 CONSTRUCTION CO,** 431 K and
 3008 F. (See left side lines and
 p 10.)

Cechettini Carriage Works

Manufacturers of all kinds of
 Vehicles and General Iron Work

1305-1313 Second St. Sacramento

Wholesale Dealers in

Drayage, Storage
 Heavy Hauling

HAY

SENF
 DRAYING CO.
 122 K STREET
 Phone, Main 2413 R

SNELL
TRIBUNE
RACYCLE
CLEVELAND
RAMBLER
SWELL

Bicycles

\$1.00 down and \$1.00 each week
BUYS ONE—NO INTEREST
SNELL CYCLERY
G. A. Ritchie Eleventh and Jay

1909
SACRAMENTO CITY AND COUNTY—CLASSIFIED 825

*CEMENT CONSTRUCTION.

MARTIN GEORGE W & SONS,
1005 4th and 1217 19th. (See left
side lines and p 10.)

*CEMENT CONTRACTORS.

CENTRAL CALIFORNIA CEMENT
CONSTRUCTION CO, 431 K and
3008 F. (See left side lines and p
10.)

MARTIN GEORGE W & SONS, 1005
4th and 1217 19th. (See left side
lines and p 10.)

*CEMENT MANTELS.

CENTRAL CALIFORNIA CEMENT
CONSTRUCTION CO, 431 K and
3008 F. (See left side lines and p
10.)

*CEMENT POTTERY.

CENTRAL CALIFORNIA CEMENT
CONSTRUCTION CO, 431 K and
3008 F. (See left side lines and
p 10.)

*CEMETERIES.

(See also p 38.)

EAST LAWN CEMETERY, M st rd.
(See right top lines.)

*CESSPOOLS—CEMENT.

CENTRAL CALIFORNIA CEMENT
CONSTRUCTION CO, 431 K and
3008 F. (See left side lines and
p 10.)

*CESSPOOLS AND VAULTS
CLEANED.

LEWIS THOMAS, 1916 10th. (See
p 4.)

*CHARCOAL.

JACINTO MANUEL, 330 U. (See
left top lines.)

*CHARCOAL—ANIMAL AND
WILLOW.

PACIFIC GUANO AND FERTILIZ-
ER CO THE, 2d and Bristol,
Berkeley, Cal. (See opp p 514.)

*CHECKS—BRASS.

SLEEPER HENRY E, 1014 4th.

*CHICKEN RANCHES.

CARPENTER N T, rear Race
Track. (See left side lines.)

CHIMNEY SWEEPERS.

Heinz Charles, 1307 K.

CHINESE AND JAPANESE MER-
CHANDISE.

Coon Chang Lung, 400 I.
Fong Kee Co, 904 5th.
Hi Hing Lung, 322 I.
Hong Chong, 320 I.
Hoy Kee & Co, 430 I.
Miyaka Co The, 300 L and 304 J.
On Wing & Co, 210½ I.
PO TAI & CO, 725 J.
Quong Hi Lung & Co, 428 I.
Quong Hing Lung, 314½ I.
Quong Shew Lung Co, 320½ I.
Quong Wa Lung Co, 318 I.
Quong Yuen Chong, 324 I.
Quong Yuen Lung Co, 224½ I.
Sang Lung, 420 I.
Sang Tai & Co, 326 I.
Sen On Chong Co, 212 I.
Sing Lee, 328 I.
Son Chong, 212 I.
Sun Chong Oh Kee, 908 3d.
Sun On Chong Co, 212 I.
Sun Shung Tie & Co, 207 I.
Sun Sing & Co, 412 I.
Sun Sue Yick Co, 218½ I.
Sun Yee Youen Tang Kee, 214 I.
TONG SUNG CO, 916-918 3d. (See
under Fish.)
Tong Wo Chan & Co, 226 I.
Wing Mow Long Co, 920 3d.

PAUL OAKLEY

Hardware
Tools
Cutlery
Paints
Electric
Supplies
Electric
Flat Irons
Electric
Wiring and
Fixtures

920

J STREET

PHONE, MAIN 2308 R

McMillin-
Gordon Co.
(incorporated)
Wholesale
DEALERS

IN
Produce
Green and
Dried Fruits
Beans
Butter
Cheese, Eggs
Nuts, Honey
Field and
Grass Seeds

227-231

J Street

SACRAMENTO
CAL.

Phone, Main 272

Real
Estate
Insurance



Rents
Loans
Notary Public

MCLAUGHLIN DRAYING CO. (Inc.)

SACRAMENTO, CALIFORNIA

TELEPHONE
MAIN 433

115 K Street

STABLE PHONE
MAIN 298

PAUL H. STEUDE ALFALFA LANDS A SPECIALTY
TELEPHONE, MAIN 2159 Y
Hier wird Deutsch Gesprochen
REAL ESTATE AND INSURANCE
704 J STREET SACRAMENTO

1909
826 SACRAMENTO DIRECTORY CO'S.

CHIROPODISTS.

Donovan Alexander, 1126 7th.
FLETCHER DR R J, 529½ K. (See adv.)

Clemens Henry, 1021 14th.
Frey Louis, 511 Oak av.
Gatto Achille, 411 P.
Grande Carlos, 428 J and 511 Oak av.
Hung Sing Co, 324½ I.



Dr. Robert J. Fletcher
CHIROPODIST

Removes All Excrescences of the Feet

Ingrowing Nails a Specialty

Telephone, Main 3484

Suit 4, 529½ K Street

Flood Mrs C S, 822 6th.

CHRISTIAN SCIENCE PRACTITIONERS.

BECK H W, 719½ K. (See adv.)
BECK MRS Z H, 719½ K. (See adv.)

Jefferson & Molesworth, 1008 9th.
Johnson Bros, 910 K.
Knowles J G, 106 I.
Moll Bros, 219 K.
Posner & Kueny, 922 K.
Reed G B, 411 Bryte bldg.
Smith E M, 1503 10th.

Mrs. Zebuline H. Beck, C. S.

Hours 11 A. M. to 3 P. M.

Herbert W. Beck, C. S.

Hours 11 A. M. to 3 P. M.

Rms. 41:42 Ochsner Bldg.

719½ K Street

Bradner Mrs C H, 1423 O.
Bradner E H, 1423 O.

CIDER MANUFACTURERS.

Woods J L, 3310 York av.

CIGAR BOX MANUFACTURERS.
Sacramento Cigar Box Co, 1215 R.

CIGAR MANUFACTURERS.

American Seal Cigar Factory, 902 K.
Boles Charles, 920 8th.
Burr H W, 1124 J.

Turner F A, 2916 G.
Wing Tung Sing Co, 222 I.

CIGARS AND TOBACCO—WHOLESALE.

Adams-Booth Co, 1125 Front.
Mebius & Drescher Co, Front se cor K.
Scheunert Bros Co, 707 J.
Warren Burt, 1015 Front.

CIGARS AND TOBACCO—RETAIL.

Allgeier Philip, 816 K.

..The..
BEST
..OF..
Everything

—THE—
CORDOVA
CAFE

Norton & Pendergast
Proprietors

AAA
Shadowbrook
Our Specialty

330 K Street
Phone, Main 2802J

ROOMS THE VERMONT
Nicely Furnished, ♦ Modern Conveniences
TELEPHONE, MAIN 2675 R
621½ J STREET

F. M. McKEEVER MECHANICAL ENGINEERING AND MACHINIST WORK

Estimates furnished and machinery contracted for in Electrical, Steam and Hydraulic Plants

Shop: 11th and 12th, I and J Streets, Sacramento, Cal. PHONE, MAIN 2606J

1909

SACRAMENTO CITY AND COUNTY—CLASSIFIED 827

CIGARS AND TOBACCO—RE. TAIL—Continued.

Behrens Fred, 722 K.
Berger Al, 624 K.
Bloomberg Bros, 1021 2d.
Boles Charles, 920 8th.
Brittan Frank, 216 J.
Brown Frank, 1013 2d.
Brown & Doyle, 730 K.
Cannon R J, 414 J.
Clark E C, 615 K.
Cohen Isidor, 326 J.
Cohn Bros, 830 J.
Davis C H, J se cor 3d.
Denny John, 710 J.
Egan Bros Co, 821 K.
George H B, 501 K.
Genshlea J G, 724 J.
Ginsberg Jacob, 619 K.
Ginsberg Samuel, 206 J.
Grande Carlos, 428 J.
Hagenbuch Charles, 228 K.
Hampton T N, 1029 J.
Heiser O L, 701 J.
Howard M C, 901 2d.
Jacobs T S, 624 J.
King B W, 330 K.
McCabe Thomas, 809 K.
McElroy L H, 300 K.
Mack S H, 800 K.
Magennis J H, 601 J.
Martel H J, 1104 J.
Miller A S, 318 K.
Moroni Attilio, 626 I.
Nason W I, 926 J.
Palm E E, 228 K.
Radonich C S, 130 K.
Rossi J F, 230 J.
Rothholz Caesar, 207 and 405 K.
Samuel Manuel, 804 K.
Sang Lee, 422 I.
Scheunert Bros Co, 707 J.
Silberstein C A A, 817 2d.
Sing Fat & Co, 911 3d.
Stevenson A J, 826 J.
Tshimalu T, 328 L.
Union Cigar Store, 920 8th.
Weiger C B, 601 K.
Wiles Fred, 911 2d.
Wilson J N, 700 K.
Wilson J W, 1010 7th.
Wo Lee Co, 904 4th.

*CITY PROPERTY.

BROOKE REALTY CO Inc, 618 J.
(See back cover and p 14.)
California Corporation, 620 J.
REED & ELLIOTT, 1015 4th. (See
right center lines.)

CIVIL ENGINEERS AND SUR- VEYORS.

(See also Engineers.)

Boyd J C, 1007 8th.
Routledge W H, 706½ K.
Yost Clifford, Folsom.
Crew H E, Isleton.

CLAIRVOYANTS.

Franklyn Mme, 1411 K.
St John George, 205½ K.
Zazelle Mrs Vera, 705 J.

*CLEANERS, DYERS AND SCOURERS.

(See also Dyers.)

**CALIFORNIA AMERICAN
CLEANING AND DYE WORKS**,
1515 20th. (See right top lines.)
DUCHEZ JEROME, 1016 23d. (See
under Dyers and Cleaners.)
Eaton B D, 1720 16th.
GREAT WESTERN DYE WORKS,
818-820 R. (See back cover.)
**NEW FRENCH DYEING AND
CLEANING WORKS**, 1016 23d.
(See under Dyers and Cleaners.)
Ricketts & Morris, 1012 8th.

*CLEANING AND PRESSING.

**THOMAS F PARISIAN DYEING
AND CLEANING WORKS**, 1012
10th. (See right top lines.)

CLOAKS AND SUITS.

See Dry Goods.

*CLOCKS.

KLUNE & FLOBERG, 528 K. (See
left center lines.)

CLOTHING—RETAIL.

Arcade Clothing House, 329 K.
Barnard Morris, 409 K.
Bloomberg Mrs Isabel, 214 K.
Bloomberg J B, 1111 2d.
Bush Henry, 321 K.
Cohen Mrs Ricka, 228 L.
Elkus Albert, 824-830 K.
Frommer Bernard, 303 K.
George Abraham, 1117 2d.
Goldstein Harry, 1123 2d.
Goldstein Samuel, 1119 2d.
Hub The, 802-808 J.
Leoni A & Co, 506 J.
Levey G J, 329 K.
Markowitz Max, 205 L.
Marks Gustavus, 419 K.

**General
Contractor**

..AND..

Builder

**R. M.
SMITH**

**Estimates
Furnished
REPAIRING**

2017

Eighteenth St.

PHONE, MAIN 1343 Y

F. H. COFFMAN

Pianos Repaired and Cabinet Work in All Branches

1225 SIXTH STREET--OLD PAVILION

Interior Painting and
Hardwood Finishing

We VULCANIZE Tubes and Casings

MAXWELL AUTO GARAGE CO.

709-11 L STREET

PHONE, MAIN 722

Autos for Hire

Men's and Boys' Shoes
H. MILES
 511 K STREET
 SACRAMENTO, CAL.



**STACY,
 ADAMS
 SHOES**

WENTWORTH HOSPITAL

Has the Only Modern Surgery in Sacramento

828 1909 SACRAMENTO DIRECTORY CO'S.

CLOTHING—RETAIL— Continued.

Miwa Y, 326 K.
 Morrell Mrs Rose, 1121 2d.
 Petrie W M, 622 J.
 Pickett-Atterbury Co, 611 J.
 Ratzanefsky Jacob, 211 L.
 Ratzanefsky Mrs Sarah, 220 J.
 Rush Mendel, 208 K.
 Sakiyamo N, 1213 3d.
 Wing Lung Co, 206 I.

*COAL—RETAIL.

JACINTO MANUEL, 330 U. (See left top lines.)

HOWE'S ACADEMY & BUSINESS COLLEGE, 1028 J. (See left center lines and p 19.)
 MILLS COLLEGE, Mills, Cal. (See opp p 471.)
 ST JOSEPH'S ACADEMY, 9th cor G.

*COLONIZATION COMPANIES.

NOBLE W R & CO, 1015 8th. (See front cover and opp Real Estate.)

*COLONY LANDS.

HULINGS B F, 631 J. (See adv.)

HOMESEEEKERS

Orangevale is Sacramento's Choicest Suburb. Beautiful Lots on American River Bluffs—\$100 and up. Mountain drinking water. Electric lights. Hourly Motor Car Service.

10-Acre Tracts in Orangevale Colony—Planted to Trees and Vines, 14 years old—\$125 per acre and up. Pay over 40 per cent yearly profit.

BUY IMPROVED FRUIT RANCHES. GET IMMEDIATE RETURNS.

Alfalfa Ranches, Stock Ranches and large areas of bare land, admirably adapted to Alfalfa, Eucalyptus and Fruit, my Speciality

B. F. HULINGS

FARM LAND BROKER

631 J STREET

*COKE.

JACINTO MANUEL, 330 U. (See left top lines.)

COFFEE, TEA AND SPICES.
 (See Tea, Coffee and Spices.)

COLLECTION AGENCIES.

HENRY'S LAW AND COLLECTION CO, 606 I. (See top and bottom edges.)

International Protective Assn The, 301 Bryte bldg.

Interstate Commercial and Collection Agency, 910 5th.

Sacramento Collecting Co, 614 I.
 Sacramento Credit Rating and Collection Agency, 15 Stoll bldg.

COLLEGES AND SCHOOLS.
 (See also Miscellaneous.)

Atkinson's Sacramento Business College, Hale bldg.

CAPITAL CITY COMMERCIAL COLLEGE, 1015 10th. (See right bottom lines.)

*COLOR PRINTERS.

SACRAMENTO LITHOGRAPH CO, 305 J. (See opp p 579.)

*COLUMNS.

BANTA A J, rear 314 10th. (See backbone.)

BURNETT & SONS, R bet 23d and 24th. (See p 5.)

SACRAMENTO PLANING MILL & FURNITURE CO, 6th cor R. (See left bottom lines.)

*COMBINATION BOILERS AND GAS STOVES.

AUBERTUS A M, 507 J. (See right side lines and p 17.)

*COMMERCIAL PHOTOGRAPHY.

TONGE J H, 1007 K. (See left side lines.)

COMMISSION MERCHANTS.
 (See also Produce.)

Aoki Giichi, 315 M.

..THE..

GLOBE



REGISTER

Loose Leaf
 Systems

for
 Office
 Store
 and
 Factory

A. I.
DONNELL
 AGENT
 129 J STREET

I. L. JOHNSON, Carpenter and Builder

Jobbing Promptly Attended to. Plans and Specifications Furnished
 Residence, Thiry-Second and M Streets SACRAMENTO

ADDRESS: 27A R.F. D. No. 2 ♦ PHONE, MAIN 2272 Y

THE F. THOMAS 1012 TENTH ST.

R. C. KEENE
MANAGER

Phone Main 2589 J

Parisian Dyeing and Cleaning Works

1909
SACRAMENTO CITY AND COUNTY—CLASSIFIED 829

COMMISSION MERCHANTS— Continued.

California Fruit Distributors, 1012 2d.
Haynes J P & Co, 105 K.
McMILLIN-GORDON CO, 227-231 J. (See right side lines.)
SHIBUYA C Y, 328 L. (See opp p 591.)
Mathena James, Isleton.

*CONCRETE CONSTRUCTION.

CENTRAL CALIFORNIA CEMENT CONSTRUCTION CO, 431 K and 3008 F. (See left side lines and p 10.)
MARTIN GEORGE W & SONS, 1005 4th and 1217 19th. (See left side lines and p 10.)

*CONCRETE FOUNDATIONS.

MARTIN GEORGE W & SONS, 1005 4th and 1217 19th. (See left side lines and p 10.)

*CONCRETE AND CEMENT WORK.

MARTIN GEORGE W & SONS, 1005 4th and 1217 19th. (See left side lines and p 10.)

CONFECTIONERS—WHOLE-SALE.

Demers L H, 424 K.
Gimbal Bros Co, 109 K.
Marino Charles, 2014 27th.
Rowe E E, 1026 2d.

CONFECTIONERS—RETAIL.

Batchelder N A, 1630 O.
Boyd A L, 930 Q.
Brockenauer Mrs Carolina, 2127 K.
Clark Mrs J M, 1232 J.
Clayton Jennie, 3502 Cypress av.
Dalzell R H, 1010 17th.
Farmer Robert, 1131 J.
Fogarty N J, 1122 J.
Gorman E J, 715 19th.
Gutierrez A A, 508 K.
Hiasi T, 320½ L.
Hondros Nicholas, 10th sw cor L.
Howard Mrs A B, 921 2d.
James Mrs Addie, 5431 Sacramento av.
Koster H L T, 35th cor Park av.
Koutches & Koutches, 911½ K and 930 J.
La Shelle J E, 1009 K.

McLaughlin John, 829½ 2d.
Morikawa M, 1214 3d.
Morpheus James, 903 2d.
Namimoto R, 311 L.
Nicolaides X, 923 K.
Nishi H, 305½ L.
Pekay The, 819 K.
Philbrick & Co, 819 K.
Swalley H M, Oak Park.
Trust Wm, 728 K.
Yamane A, 309 L.
Zampathas Bros, 505 K.
Howes L H, Elk Grove.

*CONTRACTORS—ARTIFICIAL STONE.

CENTRAL CALIFORNIA CEMENT CONSTRUCTION CO, 431 K and 3008 F. (See left side lines and p 10.)
HALEY J W, 1615 18th. (See right center lines and p 10.)
HENLEY O A & SON, 1621 13th. (See p 9.)
HERNDON G L, 914 T. (See right center lines and p 9.)
MARTIN GEORGE W & SONS, 1005 4th and 1217 19th. (See left side lines and p 10.)

CONTRACTORS—BRICK.

HALEY J W, 1615 18th. (See right center lines and p 10.)
Henley A J, 1721 17th.
HENLEY O A & SON, 1621 13th. (See p 9.)
HERNDON G L, 914 T. (See right center lines and p 9.)
Krenzberger Lucas, 1622 K.
MARTIN GEORGE W & SONS, 1005 4th and 1217 19th. (See left side lines and p 10.)
Murray G W, 1716 M.

*CONTRACTORS—BRIDGE AND WHARF.

WESTERN BRIDGE & CONSTRUCTION CO, 719½ K.

CONTRACTORS—BUILDERS.

Attel C J, 1515 23d.
Balliel J A, 1408 T.
BLIVEN A E, 2711 V. (See left top lines and p 6.)
Busk C E, 215 5th av.
Busk Emil, 215 5th av.
CONRADT EDWARD, 2916 26th. (See p 6.)
De Roza Alfred, 2015 11th.

A. VAN ZEE
 General Contractor
 ...and Builder...
 2707 Eye Street
 Phone, Main 802
 Sacramento, Cal.

HELP
 in all
 Nationalities
 Furnished
 Skilled and
 Unskilled
LABOR
 Private
 Detective
 Agents
 Confidential
 Investigations
 of all kinds
 Rates
 Reasonable
 Capital
 Employment
 &
 Information
 Bureau
 904½
 Second Street
 Sacramento, Cal.
 Phone, Main 1751J

H. P. HARDMAN LADIES' TAILOR

ROOMS 1, 2, 3 AND 4, 718 J STREET (UP-STAIRS)

PHONE: MAIN 2179 L

SUTER-

HEV-

ENER

MILL

&

MNFG.

CO.



Mill Work

Office

Store

Bank and

Bar

Fixtures

Doors

Windows

Job Work

Refriger-

ators

Lumber

Designs

..AND..

Estimates

Furnished

1914-1930

SECOND

STREET

Phone, Main 663

G. W. BEATON

ELECTRICAL CONTRACTOR

...EXPERT ELEVATOR WORK...
Motors Rented. Motor Repairing. New and Second-Hand Motors and Electric Supplies and
RES. PHONE, MAIN 2330 L All Kinds of Electrical Wiring PHONE, MAIN 1547 J

1102 J Street, SACRAMENTO, CAL.

1909

830 SACRAMENTO DIRECTORY CO'S.

CONTRACTORS—BUILDERS— Continued.

Ettel C J, 1515 23d.
FRAZER W J, Box 69G Mont Clair
 av nr J st rd. (See p 6.)
HENDRICKS & VITELLE, 915
 26th. (See p 6.)
JOHNSON I L, 32d cor M. (See
 left bottom lines.)
 Keagy Edward, 2523 28th.
MARTIN GEORGE W & SONS,
 1005 4th and 1217 19th. (See left
 side lines and p 10.)
 Mathews C J, 1111 9th.
 Mello Antone, 422 S.
 Morton J L, 2101 I.
NORTHERN CALIFORNIA CON-
STRUCTION CO, 706½ K. (See
 right center lines and p 7.)
 Parker J R, 122 2d av.
 Ruiter R H, 406 Center av.
SMITH R M, 2017 18th. (See right
 side lines and p 7.)
STAHL G B, 1104 E. (See p 8.)
VAN ZEE ANTHONY, 2707 I. (See
 right side lines and p 8.)

CONTRACTORS—CARPENTERS AND BUILDERS.

BLIVEN A E, 2711 V. (See left
 top lines and p 6.)
 Book Bros, 1007 7th.
 Braun P J, 1516 23d.
 Burns T M, 2207 N.
 Campbell J C, 111 5th av.
 Clark J W, 1917 17th.
CONRADT EDWARD, 2916 26th.
 (See p 6.)
 Covell Bros, 1901 O.
 Dashiell B T, alley rear 720 P.
 Davis T H, 1429½ 28th.
 Dehn Henry, 2810 J.
 Falconer David, alley rear 719 I.
 Francis A P, 62 Rose av.
FRAZER W J, Box 69G, Mont Clair
 av nr J st rd. (See p 6.)
 Fritsche Richard, 1809 O.
 Funk Fred, 2408 Carnegie av.
 Gardner E M, 3601 Park av.
 Gray C A, 1108 11th.
 Gross E G, 306 East av.
 Harris J E, 1114 P.
 Harvie N N & Son, 2212 T.
 Hendren H A, 3023 F.
 Hook Wm & Son, 718 18th.
 Houston J G, 2705 O.
 Inouye C, 321 L.
 James J M, 903 D.

JOHNSON I L, 32d cor M. (See
 left bottom lines.)
 Jones R S, 522 I.
 Lathrop & Johnson, 1005 11th.
 McKay G W, 1018 T.
 McKenzie M F, 1126 T.
 Mabee T J, 2201 I.
MARTIN GEORGE W & SONS,
 1005 4th and 1217 19th. (See left
 side lines and p 10.)
 Mason E S, 216 5th av.
 Melvin W M, 3107 Cypress av.
 Meyer Frank, 2714 U.
 Miller A F, 205 3d av.
 Norris W W, 1821 F.
NORTHERN CALIFORNIA CON-
STRUCTION CO, 706½ K. (See
 right center lines and p 7.)
OKITA A Y, 219 L. (See p 7.)
 Parker J R, 120 2d av.
 Pitt & Farnsworth, 2527 M.
 Powell Robert, 1911 28th.
 Ryder H A, 1221 2d.
 Scollan T P, 2919 T.
 Shadinger M H, 2101 10th.
 Siller Bros, 1614 13th.
 Silva J A, 401 11th.
SMITH R M, 2017 18th. (See right
 side lines and p 7.)
 Soles James, 1420 28th.
 Sweat F M, 1422 S.
 Takao T, alley rear 219 M.
 Townsend & Browchers, J st rd,
 R F D 2.
 Vanina Charles, 2022 M.
VAN ZEE ANTHONY, 2707 I. (See
 right side lines and p 8.)
 Wakimoto E, 225½ L.
 Wendt G A, 2130 M.
 Williams Joseph, 1225 6th.

CONTRACTORS—CEMENT.

Baltic G W, 2531 N.
 Barry & Hannan, 2714 F.
CENTRAL CALIFORNIA CE-
MENT CONSTRUCTION CO, 431
 K and 3008 F. (See left side lines
 and p 10.)
 Clark E L, 804 U.
 Clark T E, 1907 6th.
 Griffin W H, 2510 O.
 Hannan Elza, 1821 Q.
 Hoffman Elwyn, 1900 16th.
 Huff M F, 3325 Madrone av.
 Hughes Michael, 2308 N.
 Johnson H H, 3606 York av.
MARTIN GEORGE W & SONS,
 1005 4th and 1217 19th. (See left
 side lines and p 10.)

—THE—
INVINCIBLE
WHITE STEAMER



ARNOLD BROS.

..AGENTS..

1309-1315 J STREET

We are also Gas and Gas-
oline Engine Experts

PHONE, MAIN 1711 R

FOR A LIST OF
SACRAMENTANS
COLLECTING

Cash Checks

READ THE ENTIRE CITY DIRECTORY

1909
SACRAMENTO CITY AND COUNTY—CLASSIFIED 831

CONTRACTORS—CEMENT—
Continued.

Parker R W, 1311 21st.
Ransome Concrete Co, 10th cor K.
Shearer J D, 2018 19th.
SPAN E W J, 2504 Q. (See p 9.)
Speich John, J street rd.

***CONTRACTORS—CONCRETE
CONSTRUCTION.**

GUTER JOSEPH, Morton av cor
Gage av, The Wallace tract.
MARTIN GEORGE W & SONS,
1005 4th and 1217 19th. (See left
side lines and p 10.)

***CONTRACTORS—CURBING.**

CARLAW BROS, 10th and R. (See
right side lines and p 13.)

***CONTRACTORS—CUT STONE.**

CARLAW BROS, 10th and R. (See
right side lines and p 13.)
CARROLL J, 2431 10th. (See right
bottom lines and under Monu-
ments.)

***CONTRACTORS—ELECTRICAL.**

(See also Electricians.)

LANGLEY W A, 1025 10th. (See
right side lines.)
OAKLEY PAUL, 920 J. (See right
side lines and under Hardware.)
STRAND & VINING, 524 Oak av.
(See left bottom lines and p 11.)

***CONTRACTORS EXCAVATING.**

MILLARD H D, 1714 16th. (See p
11.)

CONTRACTORS— GENERAL.

BLIVEN A E, 2711 V and 706½ K.
(See left top lines and p 6.)
Burns Joseph, 1st av nr Stockton
av.
Clark T E, 1917 6th.
Clark & Henery Construction Co,
22 Stoll bldg.
CONRADT EDWARD, 2916 26th.
(See p 6.)
Contell J H, 2028 J.
Da Roza A S, 2015 11th.
Dehn Henry, 2810 J.
Francis Bros, Toulumne av nr Up-
per Stockton rd.
FRAZER W J, Box 69G, Mont Clair
av nr J st rd. (See p 6.)
Gieseke F J, 2219 K.

HENDRICKS & VITELLE, 915
26th. (See p 6.)

HENLEY O A & SON, 1621 13th.
(See p 9.)

Jenkins & Wells, 3302 Sacramento
av.

Kameyer C L, 620½ J.
Kawasaki & Utasaki, 1208 3d.
Kirby J G, 816 9th.

McClain Henry, 1208 Whitney av.
McDougall & Kennedy, 1st av nr
Stockton av.

McGillivray Construction Co, 1007
7th.

MARTIN GEORGE W & SONS,
1005 4th and 1217 19th. (See left
side lines and p 10.)

Mathews C J, 1111 9th.

Meiss Bros, 1412 K.
MILLARD H D, 1714 16th. (See p
11.)

Moore Charles, 814 17th.
Nix H F, 1214 S.

NORTHERN CALIFORNIA CON-
STRUCTION CO, 706½ K. (See
right center lines and p 7.)

OKITA A Y, 219 L. (See p 7.)

Ruiter R H, 406 Center av.

Silva J A, 401 11th.

Slaughter Wm, 411 M.

SMITH R M, 2017 18th. (See right
side lines and p 7.)

STAHL G B, 1104 E. (See p 8.)

Sweat F M, 1422 S.

Teichert Adolph, 2401 J.

Twaddle E E, 2513 N.

VAN ZEE ANTHONY, 2707 I. (See
right side lines and p 8.)

Barry E E, Elk Grove.

Derr J McC, Elk Grove.

De Back J W, Vorden.

***CONTRACTORS—GRADING.**

MILLARD H D, 1714 16th. (See
p 11.)

***CONTRACTORS—HOUSE
MOVERS.**

ELLIS & JOHNSON, F nw cor 20th.
(See p 12.)

PILE A M, 1722 E. (See p 12.)

***CONTRACTORS—LABOR.**

See Employment Bureaus.

***CONTRACTORS—MASON.**

CARLAW BROS, 10th and R. See
right side lines and p 13.)

HALEY J W, 1615 18th. (See right
center lines and p 10.)

Writing Desk and Bookcase Doors

MARSHALL & STEARNS
Wall Beds
A. M. AUBERTUS
AGENT
..507 J STREET..

Scotch and all other Eastern Granites

Carlaw Bros.
IMPORTERS OF

TENTH AND
R STREETS

Capital City Commercial College G. A. Pierce, Principal

1015 TENTH STREET, SACRAMENTO, CAL.

PHONE, MAIN 1968Y

Furnishes Stenographers and Bookkeepers