

THE SUNDAY LEADER

Delivered to any part of the City or Oak Park at 25 cents per month

LARKIN & SON, Publishers 307 J Street

SACRAMENTO BURNER & OIL CO. INC. PHONE, MAIN 2827 J

H. L. NELSON, Pres.

Office 1009 Tenth St. J and K CONTRACTING ENGINEERS

DEALERS IN
Oil Burners and Oil Burning Plants of Every Description

HYDRO CARBON LAMPS

1909
760 SACRAMENTO DIRECTORY CO'S.

Williams Alfred, rancher.
Williams Edward H, lab.
Williams Louise, tchr Enterprise dist.
Williams Manuel, fruit grower.
Williams Mathew, rancher.
Williams Phoebe, tchr.
Wilson Dexter T, orchardist.
Witherbee Walter L, sec Florin Basket Co, r Sacramento.

FOLSOM.

Twenty-two miles northeast of Sacramento City on the Southern Pacific Railroad. Post, express, telegraph and telephone communication.
Aguirre J A, overseer Represa.
Alden C E, commissary Represa.
Aiston J A, rancher.
Alley Alida, stenogr Folsom Dev Co.
Ambruster Henry, lab.
American River Elec Co.
A O U W Folsom Lodge, meets 1st Wednesday and Wednesday preceding the 28th of each month.

Tony's Restaurant and Oyster House

M. AND L. ZAMBELICH, PROPRIETORS 1021 THIRD STREET

PRIVATE ROOMS FOR LADIES Phone Main 1607 L OPEN AT ALL HOURS

Anderson Levi H, guard Represa.
Arbuckle G M, guard Represa.
Arlington Harry W, lab.
Armstrong Dorothy, tchr.
Arnold Albert T, mach Folsom Dev Co.
Avery Lukens C, rancher.
Aymar Benjamin A, fruit raiser.
Aymar Benjamin L, carp.
Barton Wm D, dairyman.
Bauer Gustav A, harnessmkr and carriage dlr.
Bell George, tmstr.
Berry Edward F, stock raiser.
Best Harry A, lab.
Biggs Benjamin F, dairyman.
Biggs Charles O, driver S C Pelton.
Biggs Elizabeth, tchr.
Biggs George A, rancher.
Biggs Joseph, clk C S Pelton.
Biggs Lewis T, farmer.
Biggs Samuel, rancher.
Biggs Theodore, carp.
Blachly Napoleon, dredgeman.
Blair Edwin S, eng.

Fine Photos

Portraiture and View
Work of All Kinds

1007 K STREET

Songe

Successor to W. D. Kilborn



Wholesale Dealers in

Drayage, Storage
Heavy Hauling

HAY

SENF
DRAYING CO.

122 K STREET

Phone, Main 2413 R

Blanchard John E, prin Folsom school.
Bland Edward, guard Represa.
Boom Charles A, carp.
Boom Charles D, fruit grower.
Borges Antonio A, barber.
Bowser Wm, dredgeman.
Boyle H, guard Represa.
Bradley Addie E (wid James T), restaurant.
Briggs Benjamin F, rancher.
Brock George W, saloon.
Broder Jacob, rancher.
Brooks A L, guard Represa.
Brown George C, guard Represa.
Brown John C, guard Represa.
Brown T C, guard Represa.
Brugger Jacob, miner.
Buddecke D C, guard Represa.
Bunker Edward B, dredgeman.
Bunnel James, lab.
Burke J A, guard Represa.
Burnett David W, photogr.

American Fish Co. 714 J STREET Phone Main 454

CRADDOC MEREDITH, MANAGER

Burnett David W Jr, clk George Imhoff.
Burnett Edna, tchr Howard dist.
Burnett E, asst surveyor Folsom Dev Co.
Burnham Frederick P, druggist J H Burnham.
Burnham J H, banker, druggist, Ins and notary.
Burnham Lewis P, painter.
Burns E H, guard Represa.
Bush Wm J, dredgeman.
Butler Guy W, furnishing goods, shoes and hats.
Butler John E, rancher
Caduff Thomas, saloon.
Campbell Sanford, lab.
Cases Albert G, foreman winery.
Castro John, lab.
Castro Manuel F, miner.
Catholic Church, Rev Father Daniel Horrigan pastor.
Chandler Russell, carp.
Citrus Camp No 7955, Modern Woodmen of America, meets
Fridays I O O F Hall.
Clarke R, guard Represa.
Claus George, blksmith.

**Real
Estate
Insurance**



**Rents
Loans
Notary Public**

PAUL OAKLEY

**Hardware
Tools
Cutlery
Paints
Electric
Supplies
Electric
Flat Irons
Electric
Wiring and
Fixtures**

920

J STREET

PHONE, MAIN 2303 R

McMillin- Gordon Co.

(Incorporated)
**Wholesale
DEALERS**

IN
**Produce
Green and
Dried Fruits
Beans
Butter
Cheese, Eggs
Nuts, Honey
Field and
Grass Seeds**

227-231

J Street

**SACRAMENTO
CAL.**

Phone, Main 272

McLAUGHLIN DRAYING CO. (Inc.)

SACRAMENTO, CALIFORNIA

TELEPHONE
MAIN 433

115 K Street

STABLE PHONE
MAIN 298

..The..

BEST

..OF..

Everything

== THE ==

**CORDOVA
CAFE**

**Norton &
Pendergast**
Proprietors

AAA

Shadowbrook
Our Specialty

330 K Street
Phone, Main 2802J

PAUL H. STEUDE ALFALFA LANDS A SPECIALTY

TELEPHONE, MAIN 2159 Y

Hier wird Deutsch gesprochen

REAL ESTATE AND INSURANCE

704 J STREET

SACRAMENTO

762

1909
SACRAMENTO DIRECTORY CO'S.

Clayborne Lee (Clayborné & McBeath), saloon.
Clayborne Tilden, saloon.
Clayborne & McBeath (Lee Clayborne & Robert McBeath),
saloon.
Clemensen Hans C J, cashier.
COHN PHILIP C, Groceries and Hardware.
Cohn Wm M, clk P C Cohn.
Cole Charles E, blksmith.
Colebacher Albert, rancher.
Collins Wm L, oiler Sac Elec G & Ry Co.
Comstock Wm H, rancher.
Conley Charles F, dairyman.
Connell J F, turnkey Represa.
Connelly Cicero C, lab.
Cook James M, lab.
Cooney Michael, miner.
Coons F M, guard Represa.
Cowen E H, guard Represa.
Cox J P, ins agt and live stock.
Cox Robert E, dredge master.
Crim Charles F, salsn.

REAL ESTATE Loans and Insurance
NOTARY PUBLIC
H. W. BAKER 3515 Cypress Avenue, Oak Park
Phone, Red 152

Cullen Michael L, lab Folsom Dev Co
Cupich Joseph, lab.
Cupich Martin, rancher.
Currier Ralph G, fruit raiser.
Curry Thomas, miner.
Curtin T, gatekeeper Represa.
Daily Maurice D, stockman.
Daily Mrs M A, dairy.
Dains Benjamin G, watchman.
Dains Clarence G, mach.
Daly Dennis, dairyman.
Darling Charles, blksmith, r Natoma.
Darmody Wm, clk R H Vehmeyer.
Darrington John, rancher.
Darrington Levy, rancher.
Dayball Edgar, dredgeman Folsom Dev Co.
Demeester Fred, watchman.
De Rosa Joseph S, lab.
Dickson Alexander, dredgeman Folsom Dev Co.
Dolan M J, guard Represa.
Donahue Daniel, orchardist.
Donahue John, rancher.

ROOMS **THE VERMONT**
Nicely Furnished, ♦ Modern Conveniences
621½ J STREET
TELEPHONE, MAIN 2675 R

F. M. McKEEVER MECHANICAL ENGINEERING
AND
MACHINIST WORK

Estimates furnished and machinery contracted for in Electrical, Steam and Hydraulic Plants
Shop: 11th and I2th, I and J Streets, Sacramento, Cal. PHONE, MAIN 2606J

1909
SACRAMENTO COUNTY DIRECTORY—FOLSOM. 763

- Donnelly Peter F, constable Granite twp.
- Dorian Patrick, lab.
- Dowden S, helper Folsom Dev Co.
- Drennon Wm.
- Drullinge J W, guard Represa.
- Duckow M, mech Folsom Dev Co.
- Dutra Manuel, lab Folsom Dev Co.
- Dyer T L, guard Represa.
- Earl Fruit Co, F W Staunton agt.
- Eaton Thomas P, lab.
- Eckhardt Philip D.
- Ecternach H, guard Represa.
- Egan James, watchman.
- Elledge George, guard Represa.
- Eller Henry C, student.
- Enterprise Hotel, Mrs Sadie Gilbert propr.
- Estes Iva A, tchr Folsom school.
- Estwates F P, asst turnkey Represa.
- Ewert Charles H, emp Frank Fritz.
- Farling Clarence, oiler Folsom Dev Co, r Enterprise Hotel.

PHONE, MAIN 2546J ESTIMATES FURNISHED

GEO. L. HERNDON, Bricklayer & Contractor
JOBGING PROMPTLY ATTENDED TO 914 T STREET

- Farmer George, dentist.
- Farmer Wm E, elec.
- Feara M J.
- Ferguson Edmund W, blksmith.
- Ferguson George, mach Sac Elec G & Ry Co.
- Ferguson Martha J, tchr Folsom school.
- Ferguson Oliver E, dredgeman.
- Ferguson Robert A, driller.
- Fern Parlor No 123 N D of G W, meets 1st and 3d Tuesdays
I O O F Hall.
- Ferry Manuel J, tel opr.
- Finan Mrs B.
- Finch David U, vineyardist.
- Finch Edward G, oiler.
- Finch Wm E.
- Fleckenstein Albert C, clk Enterprise Hotel.
- Fleckenstein George I, guard Represa.
- Fleckenstein Mary E, tchr.
- Foley Timothy, guard Represa.
- Folsom Development Co, R G Hanford, gen mngr.
- Folsom Machine Co, R G Hanford, gen mngr.
- Folsom Rock Co, R G Hanford, vice pres and gen mngr.
- Folsom Soda Works (Everett A Shumway).

We VULCANIZE Tubes and Casings

MAXWELL AUTO GARAGE CO. 709-11 L STREET
PHONE, MAIN 722 Autos for Hire

**General
Contractor**
..AND..
Builder

**R. M.
SMITH**

Estimates
Furnished
REPAIRING
2017
Eighteenth St.
PHONE, MAIN 1343 Y

F. H. COFFMAN Interior Painting and
Hardwood Finishing
Pianos Repolished and Cabinet Work in All Branches
— ALL KINDS OF FURNITURE REPAIRED AND REFINISHED —
1225 SIXTH STREET--OLD PAVILION

Men's and Boys' Shoes

H. MILES

511 K STREET
SACRAMENTO, CAL.



STACY,
ADAMS
SHOES

WENTWORTH HOSPITAL

Has the Only Modern Surgery in Sacramento

1909

764

SACRAMENTO DIRECTORY CO'S.

Folsom Telegraph (Weekly), Mrs M F McFarland, propr;
R D McFarland, editor and mngr.
Foster Anton, rancher.
Francis Anton, miner.
Fraternal Order of Eagles Aerie No 929, meets every 2d and
4th Mondays Native Sons' Hall.
Frates James E, lab.
Frates M, lab Folsom Dev Co.
Fraties Joseph.
F, and A' M Natoma Lodge No 64, meets Thursday on or
next preceding full moon.
Freeman John H, warehouseman.
Fritz Frank, saloon.
Gallagher D, guard Represa.
Galliher John W, rancher.
Gates Jay H, carp.
Gazett Jacob B, fruit grower.
Gerber George P (Gerber & Mollett), butchers.
Gerber & Mollett (George P Gerber, Louis Mollett), butchers
Giddings C A, guard Represa.
Gilbert Mrs Sadie, propr Enterprise Hotel.

VERA WINCHESTER

Public Stenographer and Typewriter
Multographing, Notary, Etc.

1004 Fifth Street, Sacramento - - - - - Phone, Main 658

..THE..

GLOBE



REGISTER

Loose Leaf
Systems

for
Office
Store
and
Factory

A. I.
DONNELL

AGENT
129 J STREET

Gillick Thomas J, guard Represa.
Gillies C H, guard Represa.
Glindkamp Henry, miner.
Gomes Frank A, drill presswkr Folsom Dev Co.
Gomes John E, blksmith.
Gomes Manuel, rancher.
Green Charles, guard Represa.
Gregory Clark, lab.
Grubb H, guard Represa.
Grundmann Edward, wenchman, b Enterprise Hotel.
Grundmann Harry, wenchman, b Enterprise Hotel.
Haas Charles H, dairyman.
Haas John B, dairyman.
Haas Peter, rancher.
Hagadorn S A, guard Represa.
Hanford R G, gen mngr Folsom Dev Co, Folsom Machine Co
and Folsom Rock Co.
Harris Andrew W, lab.
Harris W H, ambulance driver Represa.
Hart Albert E, rancher.
Hart Claude (Hart & Manseau).
Hart Edward, rancher.

I. L. JOHNSON, Carpenter and Builder

Jobbing Promptly Attended to. Plans and Specifications Furnished
Residence, Thiry-Second and M Streets SACRAMENTO
ADDRESS: 27A R. F. D. No. 2 ♦ PHONE, MAIN 2272 Y

THE F. THOMAS 1012 TENTH ST.

Phone Main 2589 J

R. C. KEENE
MANAGER

Parisian Dyeing and Cleaning Works

1909

SACRAMENTO COUNTY DIRECTORY—FOLSOM. 765

Hart & Manseau (Claude Hart, E J Manseau), blksmiths.
 Harvey H E, guard Represa.
 Henry George P, eng.
 Herald C, guard Represa.
 Hesser George T, phys.
 Hicks Edward, lab.
 Hicks Garfield O.
 Hicks George E, driller.
 Hicks W F, guard Represa.
 Higgins Charles, supt Folsom Dev Co.
 Hinkle H, appr Folsom Dev Co.
 Hinkle Isaac, supt North Fork Ditch Co.
 Hollingsworth G, guard Represa.
 Holloran M, locomotive eng Represa.
 Holmes John L, painter.
 Holzinger Frederick C, lab.
 Hope Louis M, dairyman.
 Hopton Newton D, lab.
 Hopton Wm J, carp.
 Houston Frank H.

A. VAN ZEE
 General Contractor
 ...and Builder...
 2707 Eye Street
 Phone, Main 802
 Sacramento, Cal.

Chalmers-Detroit

"30" Touring Car

PRICE, \$1500.00



PHILLIPS
DRAYAGE AND
WAREHOUSE CO.

..AGENTS..
 1523-1531 Front Street
 SACRAMENTO, CAL.
 See Classified Automobiles

Hoxie Susan, rancher.
 Hoxsie George B, poultry raiser.
 Human Walter A, dry goods.
 Hurley James J, dredgeman.
 Hutton Francis O, supt Sac Elec G & Ry Co Power Station.
 Hyman Belle (wid Jacob).
 Hyman Isaac (J Hyman).
 Hyman J (Isaac and L S Hyman), dry goods.
 Hyman Laura S (J Hyman).
 Imhoff George, hardware.
 Ingersoll A E, physician Represa.
 Ingersoll A E Jr, guard Represa.
 I O O F Folsom Encampment No 24, meets every 2d and 4th
 Tuesday of each month.
 I O O F Granite Lodge No 62, meets every Saturday.
 I O O F Hall.
 Israel G H, guard Represa.
 Jacobs Adolph A, rancher.
JACOBS JULIUS S, With P C Cohn.
 James Harry T, mach.
 Jeter G E, quarryman Represa.
 Joerger Charles F, bartndr J D Wild.
 Joerger Edward, rancher.

H. P. HARDMAN LADIES' TAILOR

ROOMS 1, 2, 3 AND 4, 718 J STREET (UP-STAIRS)

PHONE: MAIN 2179 L

HELP

in all
 Nationalities
 Furnished
 Skilled and
 Unskilled
LABOR

Private
 Detective
 Agents

Confidential
 Investigations
 of all kinds

Rates
 Reasonable
 Capital
 Employment
 &
 Information

Bureau
 904 1/2
 Second Street
 Sacramento, Cal.
 Phone, Main 1751 J

G. W. BEATON ELECTRICAL CONTRACTOR

Motors Rented. Motor Repairing. New and Second-Hand Motors and Electric Supplies and
RES. PHONE, MAIN 2330 L All Kinds of Electrical Wiring PHONE, MAIN 1547 J

1102 J Street, SACRAMENTO, CAL.

1909

766

SACRAMENTO DIRECTORY CO'S.

Joerger John P, elec.
 Joerger Louis, shoemkr.
 Joerger Wm E, dairyman.
 Johnson Epaminodas L, rancher.
 Johnson L G, guard Represa.
 Johnson Wm H, dairyman.
 Johnson W Henry, dairyman.
 Jolly C H, lieut guard Represa.
 Keefe Robert, miner.
 Keefe Robert F, ball player.
 Kerns Jacob C, opr Sac Elec G & Ry Co.
 Kinney Joseph, freight agt S P Co.
 Kipp Henry J, lab.
 Kipp John, helper Folsom Dev Co.
 Kipp J Eugene, clk P C Cohn.
 Kiser M A, guard Represa.
 Klenzendorf J, helper Folsom Dev Co.
 Klumpp Louis, saloon.
 Klumpp Louis F, harnessmkr.
 K of P Lodge No 167, meets 1st and 3d Tuesdays.

SUTER-

HEV-

ENER

MILL

&

MNFG.

CO.

====

Mill Work

Office

Store

Bank and

Bar

Fixtures

Doors

Windows

Job Work

Refriger-
ators

Lumber

====

Designs

..AND..

Estimates

Furnished

====

1914-1930

SECOND

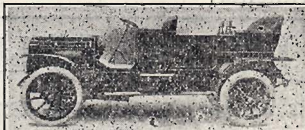
STREET

Phone, Main 663

==== **THE** ==== **REAL ESTATE**
CARMICHAEL
800 J STREET **CO.** 800 BOTH PHONES **INSURANCE**
 ..AND..

Koch George N, lab.
 Korte John F, dirver P C Cohn.
 Kunze Merman C, carp.
 Lambert F M, guard Represa.
 Lawton John.
 Leary T, guard Represa.
 Ledwell Bapter G, carp.
 Leeson C G, draftsman Folsom Dev Co.
 Lemon M P, gardener.
 Leonard J B, justice of peace and gen hardware.
 Levine John, fruit grower.
 Levy Edward R, whol liquors and cigars.
 Lewis Wm H, elec.
 Lewis O C, guard Represa.
 Little Wm, farmer.
 Lloyd Rev Wm H, pastor M E Church.
 Logan J, Folsom Dev Co.
 Logue James P, warehouseman S P Co.
 Luttrell Charles E, bartndr W L Smith.
 Luttrell Edgar J, druggist K J Slaughter.
 Mc Allister John F, rancher.
 McBeath Robert (Clayborne & McBeath), saloon.
 McCalley W, helper Folsom Dev Co.

==== **THE** ====
INVINCIBLE
WHITE STEAMER



ARNOLD BROS.
 ..AGENTS..
 1309-1315 J STREET
 We are also Gas and Gas-
oline Engine Experts
 PHONE, MAIN 1711 R

FOR A LIST OF
SACRAMENTANS
COLLECTING

Cash Checks

READ THE ENTIRE CITY DIRECTORY

1909

SACRAMENTO COUNTY DIRECTORY—FOLSOM.

767

McCartney Charles, blksmith.
McClelland George H, boiler mkr.
McDerby Thomas H, miner.
McDonald Allen J, butcher.
McDonald Daniel A, dredgeman.
McDonald Donald, lab.
McDonald Edward, dredgeman.
McDonald James, foreman construction Represa.
McDonald Leslie J, clk P C Cohn.
McFarland Hazel, music tchr.
McFarland Mrs Mary F, propr Folsom Telegraph.
McFarland Ray D, editor and mngr Folsom Telegraph, and ins
McFarling C, helper Folsom Dev Co.
McGee Amos, fruit grower.
McGee Willard, dredgeman.
McLaughlin John W, lab.
McNamar John W, dredgeman.
McPeak A N, guard Represa.
Mack John, porter.
Maher James A, dredgeman.

Real Estate	Reed & Elliott	Money Loaned
Insurance		Legal Papers Executed
Rents Collected		Notary Public
1015 FOURTH STREET		PHONE: MAIN 233

Maid Fred G, printer Folsom Telegraph.
Mann R E, guard Represa.
Manseau Edward J (Hart & Manseau).
Marvin Frank E, opr Sac Elec G & Ry Co.
Marvin George I, oiler Sac Elec G & Ry Co.
Masich Antonio, mech J D Wild.
Masonic Hall.
Maze Robert H, tinsmith.
Merritt B, chf night watch Represa.
Messick Edward, helper Folsom Dev Co.
Methodist Episcopal Church, Rev W H Lloyd pastor.
Mette Frank, rancher.
Mette Louis, rancher.
Miller Emil, carp.
Miller Hattie, clk postoffice.
Miller Henry M, blksmith Folsom Dev Co.
Miller Oscar J, undertaker and agt Wells, Fargo & Co Exp.
Mollett Louis (Gerber & Mollett), butchers.
Monson H G, timekpr Folsom Dev Co.
Moore Sarah.
Moran J, guard Represa.
Morebeck Eugene C, asst frt agt S P Co.
Moreland Max V (Moreland & Rigney).

Capital City Commercial College G. A. Pierce, Principal
1015 TENTH STREET, SACRAMENTO, CAL.
PHONE, MAIN 1988Y **Furnishes Stenographers and Bookkeepers**

Writing Desk and Bookcase Doors
MARSHALL & STEARNS
A. M. AUBERTUS
AGENT
..507 J STREET..

Carlaw Bros.
IMPORTERS OF
Scotch and all other Eastern Granites
TENTH AND R STREETS



R. J. BECKER

**BECKER
&
FOSTER**

**Oak Park
SUBURBAN
..AND..
FARM LANDS**

**Our Specialty
OFFICE:
Thirty-Fifth St.
and Cypress Ave.**

OAK PARK



W. T. FOSTER

**IVY
HAIR
TONIC**

Will Positively
Grow Hair on

**ALL BALD
HEADS**

Except Scars and
Scalds

**Stops
Falling Hair**

**Prevents
Baldness**

**Cures
Dandruff**

**L. E. JODOIN
918 Sixth St.**

Kindling

Coke

Charcoal

Wood and Coal

Manuel Jacinto

330 U Street

PHONE, MAIN 1954 J

1909

768

SACRAMENTO DIRECTORY CO'S.

Moreland & Rigney (Max Moreland, Charles Rigney), saloon.
Morrison Charles E.

Morrow George, dredgeman.

Morrow John D, dredgeman.

Moyes D, mech Folsom Dev Co.

Murphy M Isabella, dep postmaster.

MURPHY RICHARD J, Postmaster.

Myers E F, guard Represa.

N S G W Parlor 83, meets 1st and 3d Tuesdays Native Sons' Hall.

Native Sons' Hall.

Natoma Chapter No 233 O E S, meets 2d and 4th Mondays Masonic Hall.

Natoma Development Co.

Natoma Vineyard Co, Natoma.

Neil W E, guard Represa.

Neish W, lab Natoma Dev Co.

New Western Hotel, Charles Zimmerman propr.

Nichols Wm H, tmstr.

Nickerson Charles L, opr Sac Elec, G & Ry Co.

NIELSEN GEORGE W, Lumber.

OFFICE HELP
HOWE'S ACADEMY-1028 J STREET

Noone Andrew, rancher.

Noone Andrew P, rancher.

Noone R.

Norton Jones H, express.

Numes August, lab Folsom Dev Co.

O'Brien Barney, lab.

O'Neil Benjamin, guard Represa.

O'Neil Michael A, lab.

O'Neil Peter, rancher.

Oakley Eugene M, lab.

Oakley Henry L, stock raiser.

Olivera R, guard Represa.

Orr George T, miner.

Orr James A, bartndr G W Brock.

Owens T H, guard Represa.

Pacific Tel & Tel Co, Silas Showers agt.

Palmer G W, orchardist.

Paul Walter C, rancher, r Natoma.

Payen Edmond, stock raiser.

Pelton Myron (S C & Co, grocers).

Pelton Samuel C (S C & Co, grocers).

Pelton S C & Co (Samuel C and Myron), grocers.

Penpock Erastus H, helper.

Bath & Nauman FUNERAL DIRECTORS
AND EMBALMERS
1214 K STREET PHONE MAIN 218
INVALID CARRIAGE SERVICE DAY AND NIGHT

CALIFORNIA AMERICAN CLEANING AND DYE WORKS

IN CONNECTION WITH CASCADE LAUNDRY

PHONE, MAIN 131

Gentlemen's Work and Ladies' Woolen Skirts a Specialty

1909

SACRAMENTO COUNTY DIRECTORY—FOLSOM.

769

Perazzo Bros (Joseph and Peter), dairy.
 Perazzo Joseph (Perazzo Bros).
 Perry Antone, lab.
 Perry Frank, lab.
 Perry Manoah, blksmith.
 Perry T, helper Folsom Dev Co.
 Peterson Lina.
 Peyton Thomas, helper C E Cole.
 Phelan Charles A, boilermkr.
 Phelan T, boilermkr Folsom Dev Co.
 Pierce Howard H, rancher.
 Pilliken George, rancher.
 Plumb Vanche, tchr.
 Plumb Wallace B, rancher.
 Porter A J, elec Represa.
 Porter Mrs M E, rancher.
 Powderly James M, dredgeman.
 Prigmore J R, lieut night watch Represa.
 Puffer Herbert C, clk Earl Fruit Co.
 Raminez F, guard Represa.
 Raminez R B, guard Represa.

J. W. HALEY CONTRACTOR FOR ALL
 ...KINDS BRICK WORK...
 1615 Eighteenth Street SEE PAGE 10

Reilly E F, farmer Represa.
 Reilly W H, Warder Represa.
 Relvas Joseph M, dredgeman.
 Relvas Manuel, miner.
 Reynolds M, guard Represa.
 Riggins Frank, tmstr.
 Rigney Charles (Moreland & Rigney).
 Rigney Jennie.
 Rigney Keran.
 Rigney Peter E, hostler John Wild.
 Rivett W, guard Represa.
 Rodgers M, helper Folsom Dev Co.
 Roesin John, tmstr.
 Rogers Joseph, miner.
 Rogers Thomas, lab.
 Rogers Wilford A, miner.
 Rowlands John R, dredgeman.
 Rowlands Wm P, dredgeman.
 Rumsey Wm M, driller.
 Rush Eugene, supt const Represa.
 Russell James, captain Represa.
 Russi John A, butcher.
 Russi Louis E, butcher.

J. GARROLL GRANITE AND MARBLE WORK
 OF ALL DESCRIPTIONS
 Monuments, Headstones, Tablets, Cemetery Inclosures, Etc.
 Building Stone, Street Curb, Crosswalks, Etc.
 PHONE, MAIN 1403 Y
 2431 TENTH STREET, N. E. Cor. Tenth and Y, Sacramento, Cal.

The Fort Garage

Charleville & Langner Proprietors

You make no mistake having your car repaired by us

WE CAN PROVE IT TRY US

Vulcanizing, Storage Batteries Charged

Second-Hand Cars

Sundries and Supplies

28th and M Streets

Tel. Main, 1412 Y

Best Places

..IN..

Sacramento

TO GET

ROOMS

— THE —

Ellynwood

421½ J

— THE —

Golden West

1024 Fourth

— THE —

Commerce

919 Seventh

— THE —

Lynn

906-914 Seventh

N. Tracy Carpenter
Road Rear of
Race Track
Lock Box No. 14

Eggs and Poultry
Supplied and Fine Stock Furnished
ALL WHITE LEGHORN
FAMILY TRADE A SPECIALTY

H. C. MARTIN
GEO. W. MARTIN & SONS
BUILDERS AND GENERAL CONTRACTORS
Office, 1005 Fourth Street ♦ SEE PAGE 10
Residence, 1217 Nineteenth Street
H. L. MARTIN

STUDEBAKER
BUGGIES, WAGONS, AUTOMOBILES
221-225 J STREET

JOHN DEERE PLOW CO.
FARM IMPLEMENTS
GASOLINE ENGINES
221-225 J STREET

1909
770 SACRAMENTO DIRECTORY CO'S.

Russi Bros (Louis E, John A), meats.
Ryan Martin, shoemkr G A Bauer.
Sacramento Gas & Electric Ry Co Power Plant, Francis O Hutton supt.
Sales Albert G, dregdeman.
Sarmiento Manuel D, lab.
Sartin Mrs Karen L, tchr Folsom school.
Saul Charles, lab.
Saul Edwin J, lab.
Sawyer L A, guard Represa.
Schleef T, guard Represa.
Schlittler Arnold, lab.
Schlottman Bernard, rancher.
Schmid Charles J, fruit grower, real est.
Schneider Charles, miner.
Schone Theresa.
Schwegler August.
Scott Frank P, clk.
Scott George W, tmstr.
Scott Henry C, tmstr.
Scott John M, rancher.



FURNITURE MOVING, PACKING, SHIPPING
Storage and Drayage Trunks Moved Packages Delivered
1115 FIFTH STREET
P. O. BOX 714 TELEPHONE, MAIN 146

Scott Ray C, clk.
Scott W T, guard Represa.
Sellers H, guard Represa.
Shanklin W A, elec Represa.
Shoffner Amos S, miner.
Showers Frank S, clk J H Burnham.
Showers James, appr Gus A Bauer.
Showers Silas, bakery and notions, agt Pac Tel & Tel Co.
Shulte A M, blksmith Represa.
Shumway Everett A, propr Folsom Soda Wks and agt Union Ice Co, b Enterprise Hotel.
Siemer H, helper Folsom Dev Co.
Silberhorn John T, water agt.
Silva John F, rancher.
Silva Joseph A, lab.
Silva Joseph F, lab.
Silvera Joseph L, rancher.
Silvera M, guard Represa.
Slaughter Kentucky J, phys and druggist.
Slocum George M, dregdeman.
Smith Alfred J, blksmith.
Smith Charles A, barber.
Smith Charles R, carrier R F D No 1.

Strand & Vining ELECTRICAL CONTRACTORS
524 OAK AVENUE Phone, Main 2432 R

REAL ESTATE
(CITY AND COUNTRY)
INSURANCE
LOANS
MORTGAGES

F. R. M. BLOOMER
504½ J STREET
OFFICE OF J. G. MARTINE
PHONE, MAIN 2087R
MEMBER OF THE CHAMBER OF COMMERCE

NOTARY PUBLIC
SOIL EXPERT
HORTICULTURAL
ADVISER

1909
SACRAMENTO COUNTY DIRECTORY—FOLSOM. 771

Smith Frank J, blksmith.
Smith Wm L, saloon.
Southern Pacific Co, Joseph Kenney agt.
Sowles Ira.
Spurgeon Frank, oiler Sac Elec G & Ry Co.
Stanton J V.
Staunton Frederick W, agt Earl Fruit Co.
Stinson R L, clk Represa.
Strait Ransom E, rancher.
Strawbridge Robert B, clk D E Wiley.
Stroup Uriah, rancher.
Stroup Wm, miner.
Supple Daniel J, lab.
Surbaugh Marshall B, clk.
Sweet Ulysses L, butcher.
Tagtmier George H, bartndr W L Smith.
Tassie E F, guard Represa.
Taylor C L, quarryman Represa.
Tomlinson Joseph, stock raiser.
Tomlinson Lewis E, stock raiser.
Tong Leslie A, barber.

DIXON & COX PLUMBERS, GAS and
STEAM FITTERS
CONTRACT WORK A SPECIALTY Phone Main 2336 R ESTIMATES CHEERFULLY GIVEN
W. H. COX, H. DIXON 1010½ EIGHTH ST., SACRAMENTO, CAL.

Townsend George H, rancher.
Townsend Wm E, tmstr.
Trebilox S E, guard Represa.
Tribken John, rancher.
Trinity Episcopal Church.
Turman Marcella, tchr Nye dist.
Turner Andrew, miner.
Turner August, dredgeman Folsom Dev Co.
Turner V, dredgeman Folsom Dev Co.
Union Ice Co, Everett A Shumway agt.
Vance Charles C, surveyor Folsom Dev Co.
Vincent John R, poultry raiser.
Waites Melville G, clk Folsom Dev Co.
Waites Wm J, opr Sac Elec G & Ry Co.
Warnholz Frederick E, mach.
Waters Wm, guard Represa.
Webb G, guard Represa.
Wells, Fargo & Co Exp, Oscar J Miller agt.
Wentz O, helper Folsom Dev Co.
White George F, miner.
Whitney Jonathan, mngr W L Whitney.
Whitney Wm L, livery, feed and sale stable.

NAVLET BROS. Leading Florists

Floral Designs of Every Description Made to order at Reasonable Prices
Country Orders Solicited PHONE, MAIN 872 520 K STREET



LANGLEY
BICYCLES
UMBRELLAS, KEYS
Agent Excelsior Auto Cycle
1025 Tenth St.
Phone, Main 2828 R



Pure Water Guaranteed IF We Do Your
SACRAMENTO TUBULAR WELL CO. WELL BORING
900 L STREET C. D. STRAIT, Manager

Fire-Proof, Water-Proof and Earth-quake-Proof Cement Stones

3008 F STREET

Walters' Orchestra

Laura C. Walters
...LEADER...

MUSIC FURNISHED FOR ALL OCCASIONS

1006 1/2 Seventh Street - - - SACRAMENTO, CAL.

A. E. BLIVEN

TELEPHONE MAIN 2024L

PLANS AND SPECIFICATIONS FURNISHED

CONTRACTOR AND BUILDER

Jobbing Promptly Attended To

2711 V STREET

1909
772 SACRAMENTO DIRECTORY CO'S.

- Wild Andred J, poultry raiser.
- Wild James D, saloon.
- Wild John, blksmith and livery stable.
- Wiley David E, men's furnishings.
- Willett F T, guard Represa.
- Williams Bert, guard Represa.
- Williams Wm H.
- Wilson Eliza, rancher.
- Wilson George F, rancher.
- Wilson Grant, rancher.
- Wilson James E, dredgeman.
- Woodard Jessie, tchr.
- Wood D I, steward Represa.
- Woods John G, dairyman.
- Woodward Elmer T, dairyman.
- Wubena Nicholas, rancher.
- Wubena Wm, rancher.
- Yager Edward, fireman.
- Yorba A, guard Represa.
- Yost Clifford, surveyor.
- Yost George O, student.

SACRAMENTO CEMENT AND SUPPLY CO. AGENTS

Golden Gate Cement, Genasco Ready Roofing and Empire Hardwall Plaster
..DEALERS IN BUILDING MATERIALS.
OFFICE, STOLL BUILDING WAREHOUSE AND YARD, THIRTEENTH AND B STREETS
PHONE, MAIN 372 PHONE, MAIN 2423J

- Yost Noah, rancher.
- Zimmerman Charles, propr New Western Hotel.

FRANKLIN.

Situated 15 miles south of Sacramento City, from which it is reached daily by stage and mail.

- Anderson John L, rancher.
- Becker Adam, dairy.
- Becker Frederick, rancher.
- Becker Jacob, rancher.
- Benedix Albert, rancher.
- Bilby Richard A, rancher.
- Bloom Andrew C, rancher.
- Bloom Clarence L, rancher.
- Buscher Christopher, dairyman.
- Buscher Henry, rancher.
- Buscher Henry H, butcher.
- Core Edward R, rancher.
- Ehrhardt Frederick W, rancher and creamery.
- Ehrhardt John, cattle raiser.
- Ehrhardt John A, rancher.
- Ehrhardt Newton, rancher.

FRANCISCO'S
OAK HALL
THE FINEST ROADSIDE INN
ON THE PACIFIC COAST



Phone, Suburban 766
OPEN ALL NIGHT
HOTEL ACCOMODATIONS
ENTERTAINERS
Hot Chicken Dinners a Specialty
END OF RIVERSIDE DRIVE - SACRAMENTO, CAL.

JOSHUA HENDY IRON WORKS

—75 FREMONT STREET, - SAN FRANCISCO, CAL.—

MANUFACTURERS OF MACHINERY, BOILERS, ENGINES, ETC.

1909

SACRAMENTO COUNTY DIRECTORY—FRANKLIN. 773

Elliott Andrew, butcher.
Elliott John, butcher.
Franklin Hoel, Kuristnig & Co proprs.
Frey Frederick, dairyman.
Frey Henry, rancher.
Frey Henry A, dairyman.
Frey Jacob H, rancher.
Frye Charles T, rancher.
Frye Edward W, rancher.
Frye Eugene H, rancher.
Frye Mrs Minnie, tchr Point Pleasant dist.
Gilchrist Florence, tchr.
Glann Annie, rancher.
Glann Peter, stockman.
Green Mrs Effie.
Grupp Wm, rancher.
Hack Harry, rancher.
Hanlon Joseph, dairy.
Hein John J, dairyman.
Herzog John, dairy.
Hoertling Henry, rancher.

THE
STRAIGHT
GOODS
HOUSE

Old
Tavern
Wines

Straight
Kentucky
Whiskeys

A. P.
SCHELD
& CO.

Twenty-Eighth
and M Sts.
SACRAMENTO
CAL.

903
K
STREET



ODD
FELLOWS'
TEMPLE

Hollman Robert O, creamery man.
Johnson Andrew, rancher.
Johnson Charles, rancher.
Kammerer Jacob, rancher.
Kammerer John, rancher.
Kammerer Philip, rancher.
Keema Fred J, dairyman.
King Aaron, butcher.
King Mrs Elizabeth, orchardist.
King George C, lab.
King Oscar A, lab.
Kloss Adolph A, rancher.
Kloss August, rancher.
Kloss Edward C, butcher.
Knuppel Jacob, rancher.
Koester John H, lab.
Koster Jorgen, dairyman.
Kuhn Peter, butcher.
Kunsting Mrs F.
Kunsting F M.
Kunsting & Co, proprs Franklin Hotel.
LUTTIG HENRY J, Postmaster, Gen Mdse and Saloon.

Sacramento Planing Mill and Furniture Co. (Inc.) Mill Work

Interior and Hardwood Finish, Columns, Balusters, Mouldings, Etc.

TELEPHONE, MAIN 1493 R

SIXTH AND R STREETS

Sutter
Freight
Hospital
INCORPORATED
Sited on Southeast Corner of Twenty-First and T Sts.
UNDER HOMEOPATHIC MANAGEMENT

Pacific
Coast
Investment
Company

Incorporated

Our Stockholders'

Money Invested

in Gilt-Edged

Securities Only

Absolutely

Safe

Investigate

507

J STREET

ASSETS OVER \$240,000,000.00
NORTHWESTERN MUTUAL LIFE INSURANCE CO.

S. F. MCANEAR, DISTRICT MANAGER

610 K STREET, Gerber Building

Phone, Main 1952 J

774 SACRAMENTO ¹⁹⁰⁹ DIRECTORY CO'S.

Lycan Wm G, lab.
Marlatt Peter, rancher.
Nicolaus Louis J, rancher.
Salmen Anton, clk H J Luttig.
Schmidt Christian, rancher.
Schmidt Christoffer, dairyman.
Schmidt Henry J, dairyman.
Schmidt John B, rancher.
Schmitt Julius A, foreman.
Schoech Charles, rancher.
Schoech Herman, blksmith.
Schultz Jacob, dairyman.
Schulz Christian, butcher.
Shaffer Winfred S, rancher.
Smith Benjamin, dairyman.
Smith Jack A, foreman Terry Ranch.
Sprock Johannes, rancher.
Stephenson John F, rancher.
Szakal Peter, rancher.
Waits Wm A, rancher.
Walther John, rancher.

KLUNE & FLOBERG

Sacramento's Leading
Jewelers. Our Name
Stands for QUALITY

528 K STREET COR. SIXTH

Wantland Mrs Lucy.
Warner Jacob, lab.
Weisenberger Joseph, cook.
Wilson J W, carp.
Woodard Abraham W, bartndr.
Zimmerman Edward, dairyman.
Zoring Peter, lab.
Zornig Michael, dairyman.

FREEPORT.

Situated 9 miles south of Sacramento City on Sacramento river. Daily stage and mail to Sacramento City, post and telephone communication.

Anderson Adolph, rancher.
Areira Manuel L, rancher.
Avila Antone, rancher.
Azevado John, rancher.
Baumgartel Charles, rancher.
Baumgartel Frank L, rancher.
Baumgartel George C, carp and rancher.
Beach Henry J, rancher.
Belial Joseph S, rancher.

STORAGE
LEITCH
Drayage
..AND..
Warehouse
Co.

1215 FRONT ST.

Phone, Main 564

The SHASTA WOOD GO. C. R. CLARK
MANAGER

Block Wood
Mountain Oak Wood Chunk Wood Stove Wood
UPPER STOCKTON ROAD PHONE BLACK 871

WHITE ROSE WHEAT FLAKES

FOR YOUR BREAKFAST

WHITE ♦ PURE ♦ DELICIOUS

AT YOUR GROGER'S

1909

SACRAMENTO COUNTY DIRECTORY—FREEPORT. 775

Bell Thomas W, rancher.
 Calderia Antone, rancher.
 Caldeira Joseph, rancher.
 Coleman George, rancher.
 Coleman John N, rancher.
 Coleman Thomas M, rancher.
 Coleman Wm J, rancher.
 Contente Antone, fisherman.
 Contente Joseph S, lab.
 Contente Manuel S, rancher.
 Corea Manuel, fisherman.
 Curran Hugh, rancher.
 Curran Hugh Jr, rancher.
 Curran Robert J, rancher.
 Curran Samuel P, rancher.
 Damion Antone, rancher.
 Downer Mary A, orchardist.
 Elliott Lewis I, fisherman.
 Ellis Conrad R, blksmith.
 Fernandez Antone, rancher.

W. A. ANDERSON, GENERAL MANAGER

H. H. MULL, SUPT. CONSTRUCTION

Northern California Construction Company (Inc.)

OFFICE, 706½ K STREET

PHONE, MAIN 1797 L

Fernandez Joaquin, rancher.
 Fernandez Manuel, rancher.
 Fonts Frank V, lab.
 Franklin Wm, rancher.
 Garcia Manuel, rancher.
 Gargoris Manuel L, rancher.
 Glynn Patrick, rancher.
 Gosling Albert J, rancher.
 Gosling Edgar M, rancher.
 Gray Mrs Elizabeth, tchr Freeport dist.
 Hack John, rancher.
 Hack Nathan J, rancher.
 Hunt Mark T, dairyman.
 Jacinto Frank M, rancher.
 Jacinto Jose, rancher.
 Jacinto Manuel F, rancher.
 Jacinto Manuel M.
 Joseph Antone, rancher.
 Kirtlan Frederick N, agt Baker & Hamilton.
 Klotz Frederick, rancher.
 Klotz John, rancher.
 Klotz Louis G, rancher.
 Kunstle Jacob, rancher.

SCREEN WINDOWS AND DOORS ESTIMATES AND SKETCHES FREE

CENTRAL PLANING MILL (Inc.)

Seventeenth, Corner R Street

PHONE, MAIN 2392 R

Cascade Laundry
 1515 Twentieth Street
 Telephone, Main 131

Represented by
E.H. McKee
 1025
 Fourth Street
 Phone, Main 1956 R

Springfield Fire & Marine Ins. Co.
Of Springfield, Mass.

Represented by
REED & ELLIOTT
 1015
 Fourth Street
 Phone, Main 2333

Larkin & Son
307 J Street
 ...Phone, Main 324...

Book and Job
 AND
 Advertising
 Novelties

PRINTING

Fine Photos
 Portraiture and View
 Work of All Kinds
1007 K STREET

Songe
 Successor to W. D. Kilborn



SACRAMENTO BURNER & OIL CO. INC. PHONE, MAIN 2827 J
 Office 1009 Tenth St. J and K
 H. L. NELSON, Pres. CONTRACTING ENGINEERS
 DEALERS IN HYDRO CARBON LAMPS
 Oil Burners and Oil Burning Plants of Every Description

1909
 776 SACRAMENTO DIRECTORY CO'S.

- Kunstle Joseph, rancher.
- Lewis Frank J Jr, rancher.
- Lial Antone M, rancher.
- Markham Theodore, rancher.
- Meyers Callie.
- Meyers Christopher, lab.
- Miller Charles R, carp.
- Moore Ralph, rancher.
- Mosher Mrs E.
- NEWELL E C, Gen Mdse, Saloon and Postmaster. --**
- Perry John, bartndr John Sousa.
- Peterson Hans P, rancher.
- Pringle Wm W, rancher.
- Rolino John, rancher.
- Rose Manuel F, rancher.
- St Joseph Catholic Church, Father G S Soraes pastor.
- Schreiner Charles J, rancher.
- Schreiner Henry W, rancher.
- Scribner George W, rancher.
- Silva Joaquin T, rancher.

OYSTER PARLORS Tony's Restaurant and Oyster House
 1021 THIRD STREET M. AND L. ZAMBELICH, PROPRIETORS
 OPEN ALL NIGHT Phone Main 1607L PRIVATE ROOMS FOR LADIES

- Silva John J, rancher.
- Soraes G S, pastor St Joseph's Catholic Church.
- Souza Antonio A, rancher.
- Souza John, saloon.
- Sullivan Thomas, lab.
- Twohig Michael, rancher.
- Twohig Wm P, rancher.
- Valine Antone P, rancher.
- Williams Albert F, rancher.
- Williams Mary, rancher.

GALT.

Situated 28 miles southeast of Sacramento City on Southern Pacific Railroad. Postal, express, telegraph and telephone communication; also banking facilities.

- Adams Albert A, rancher.
- Alderman E F, tmstr.
- Ambrogio Charles, dairyman.
- Ambrose H, shoemkr.
- Ambrose H Jr, lab.
- Angrave Joseph W, rancher.
- Bailey Luther, farmer.
- Bailey T J, farmer.

Nothing Too Heavy for US to Handle **DRAYAGE** **SENF DRAYING CO.**
 We are also WHOLESALE DEALERS IN HAY
 122 K STREET
 Phone, Main 2413 R