

CARROLL & NICOL

2431 Tenth St., N. E. CORNER
TENTH AND Y
PHONE: SUNSET OAK 3232

Granite and Marble Work of All Descriptions

Monuments, Headstones, Tablets, Cemetery Inclosures,
Etc. Building Stone, Street Curb, Crosswalks, Etc.

982

SACRAMENTO CITY DIRECTORY CO'S.

SAN FRANCISCO SPECIAL DEPARTMENT

...OF...

Leading Mercantile Interests
NAMES INSERTED BY CONTRACT ONLY

ACCOUNTANTS.

(Certified Public.)

ATKINSON T E (Certified Public), 320 Sansome.

ACID MANUFACTURERS' WARES.

18TH & DIVISION STS-S.F.
STEIGER TERRA COTTA & POTTERY WORKS
BET FOLSOM & HARRISON

ADVERTISING SIGNS, NOVELTIES AND SPECIAL-
TIES.

BACHRACH & COMPANY, 513 Market.

AIR COMPRESSORS.

HENSHAW, BULKLEY & CO, 219-221 Spear.
JOSHUA HENDY IRON WORKS, 75 Fremont. (See left
top lines.)

AIR RECEIVERS.

HENSHAW, BULKLEY & CO, 219-221 Spear.

ARCHITECTURAL TERRA COTTA.

GLADDING, McBEAN & CO.
EDDY & HYDE STS. PHONE FRANKLIN 40
SAN FRANCISCO. CAL.

18TH & DIVISION STS-S.F.
STEIGER TERRA COTTA & POTTERY WORKS
BET FOLSOM & HARRISON

ART DESIGNERS.

COMMERCIAL ART CO (Inc), West Mission cor Brady.
(See opp p 175.)

Or Call at 407 J Street, up-stairs

RING UP MAIN 689

FOR BEST CEMENT STONES, TERRAZZO STEPS AND PLASTER DECORATIONS

J. GARFIELD LEITCH

WALTER LEITCH

ALBERT E. LEITCH

Leitch Drayage and Warehouse Co. Can do your Draying and Storing as well

and just as reasonable as any one in town. Spur track running right by the door.

SAVE ALL CARTAGE ON CARLOAD LOTS. BOTH PHONES. P. O. BOX No. 394. Office, 1215 Front Street

H. P. HARDMAN LADIES' TAILOR

ROOMS 1, 2, 3 AND 4, 718 J STREET—UP STAIRS

PHONE: SUNSET MAIN 1994

CLASSIFIED BUSINESS DIRECTORY

933

ART GLASS.

SHREVE & CO, Van Ness av nw cor Sacramento.

ART GOODS.

SHREVE & CO, Van Ness av nw cor Sacramento.

ARTISTS AND DESIGNERS.

COMMERCIAL ART CO (Inc), West Mission cor Brady.
(See opp p 175.)

ASSAYERS' SUPPLIES.

BRAUM F W CO, 303 Market and Mission nr 2d.

BABBITT METAL AND SOLDER.

PACIFIC METAL WORKS, 153-159 1st.

BAND INSTRUMENTS.

SHERMAN, CLAY & CO, 1635 Van Ness av.

BAR FIXTURES IN STOCK, OR MADE TO ORDER.

BRUNSWICK BALKE-COLLENDER CO THE, 17-27
Franklin.

BAR AND STRUCTURAL IRON AND STEEL.

JUDSON MANUFACTURING CO, 819-823 Folsom.

BELT POWER ELEVATORS.

OTIS ELEVATOR CO, Stockton, North Point and Beach
Sts.— (See Front cover.)

BELTING.

HENSHAW, BULKLEY & CO, 219-221 Spear.

BILLIARD AND POOL TABLES AND SUPPLIES.

BRUNSWICK BALKE-COLLENDER CO THE, 17-27
Franklin.

BLOWERS.

HENSHAW, BULKLEY & CO, 219-221 Spear.

BOILER TUBES AND CONDUIT PIPE.

LALLY CO, First and Folsom.

TELEPHONE WOOD, COAL AND HAY YARD

T. J. DODDS
SUCCESSOR TO THEO. J. WEISEL

FUEL AND FEED OF ALL KINDS

1801 and 1807 S STREET, SACRAMENTO, CAL.

Sunset Phone Oak 1711

THE INTERNATIONAL PROTECTIVE ASSOCIATION (INC.)
...COMMERCIAL REPORTS AND...
COLLECTIONS OUR SPECIALTY
ROOM 301, BRYTE BUILDING
We have expert attorneys in every city in America under
contract to assist us in locating debtors and collecting claims
NO COLLECTION—NO CHARGE

**EVERYTHING
ELECTRICAL****HALL & McDONELL**

COUNTRY ORDERS SOLICITED

1021 TENTH STREET

Phone: Vale 191

984

SACRAMENTO CITY DIRECTORY CO'S.

BOILERS.EBY MACHINERY CO THE, 1220-1222 Myrtle, Oakland
and 268 Market, S F. (See p 233.)

HENSHAW, BULKLEY & CO, 219-221 Spear.

JOSHUA HENDY IRON WORKS, 75 Fremont. (See left
top lines.)**BOOKBINDERS.**

BRITTON & REY, 555 Commercial. (See opp p 123.)

GALLOWAY LITHOGRAPHING CO, 1664 Howard. (See
opp p 273.)**BRASS PIPE AND TUBING.**

WOODIN & LITTLE PUMP HOUSE, 534-536 Mission.

BRASS AND IRON GLOBE AND GATE VALVES.

LALLY CO, First and Folsom.

BREWERY PUMPS.KROGH MANUFACTURING CO, 127-133 Beale. (See last
page.)**BRICK—ENAMELED.****18TH & DIVISION STS-S.F.**
STEIGER TERRA COTTA & POTTERY WORKS
BET FOLSOM & HARRISON**BRICK—FIRE.****18TH & DIVISION STS-S.F.**
STEIGER TERRA COTTA & POTTERY WORKS
BET FOLSOM & HARRISON**BRICK—PRESSED AND ENAMELED.****18TH & DIVISION STS-S.F.**
STEIGER TERRA COTTA & POTTERY WORKS
BET FOLSOM & HARRISON**BRICK—PRESSED AND FIRE.****GLADDING, McBEAN & CO.**
EDDY & HYDE STS. PHONE FRANKLIN 40
SAN FRANCISCO. CAL.**BUILDING PAPER.**BONESTELL, RICHARDSON & CO, 473-485 6th. (See
right bottom lines.)Invest in Real Estate through the **Pacific Coast Investment Co.**All our clients make money, as we handle nothing but gilt edge properties; something we would buy our-
selves if we had the money; or something we have already purchased

507 J STREET, SACRAMENTO

White Rose Wheat Flakes

For Your Breakfast. Delicious!

CLASSIFIED BUSINESS DIRECTORY

985

BUSINESS COLLEGES.

COYNE TRADE SCHOOL, 230-240 8th.
HEALD'S BUSINESS COLLEGE, 425 McAllister. (See backbone and opp p 324.)

BUSINESS SCHOOLS.

HEALD'S BUSINESS COLLEGE, 425 McAllister. (See backbone and opp p 324.)

CAST AND WROUGHT IRON PIPE.

LALLY CO, First and Folsom.

CEMENT GRAVEL MILLS.

KROGH MANUFACTURING CO, 127-133 Beale. (See last page.)

CENTRIFUGAL PUMPS.

HENSHAW, BULKLEY & CO, 219-221 Spear.
JOSHUA HENDY IRON WORKS, 75 Fremont. (See left top lines.)
KROGH MANUFACTURING CO, 127-133 Beale. (See last page.)
WOODIN & LITTLE PUMP HOUSE, 534-536 Mission.

CHEMISTS—ANALYTICAL.

CUNNINGHAM A AUCHIE, Central Bldg, Sutter cor Polk.

CHIMNEY PIPE—TERRA COTTA.

GLADDING, McBEAN & CO.
EDDY & HYDE STS. PHONE FRANKLIN 40
SAN FRANCISCO. CAL.

18TH & DIVISION STS-S.F.
STEIGER TERRA COTTA & POTTERY WORKS
BET FOLSOM & HARRISON

*CHIMNEY TOPS—TERRA COTTA.

18TH & DIVISION STS-S.F.
STEIGER TERRA COTTA & POTTERY WORKS
BET FOLSOM & HARRISON

CHINA AND PORCELAIN.

SHREVE & CO, Van Ness av nw cor Sacramento.

C. P. MASSEY

1200 J STREET

WOOD, COAL,

COKE, BLOCKWOOD, ETC.

Telephone: Main 38

The F. THOMAS
ALL GENERAL CLEANING AND DYEING
... 1012 TENTH STREET ...

Parisian Dyeing and Cleaning
WORKS
Organdies and Silk Dresses, Portiers, Blankets,
Lace Curtains, Feather Boas, Plumes and Robes.
Phones: Capital 633 and Sunset Vale 1771

G. L. HERNDON *Contractor and Bricklayer*

ALL KINDS OF BRICK WORK

914 T STREET

Phone: Oak 1991

GENERAL CONTRACTOR
AND BUILDER

SEE PAGE 10

SACRAMENTO, CALIFORNIA

N. HARVIE

Telephone Sunset

2208 T STREET

986

SACRAMENTO CITY DIRECTORY CO'S.

CLAY—FIRE AND MODELING.

GLADDING, McBEAN & CO.
EDDY & HYDE STS. PHONE FRANKLIN 40
SAN FRANCISCO, CAL.

18TH & DIVISION STS-S.F.
STEIGER TERRA COTTA & POTTERY WORKS
BET FOLSOM & HARRISON

COLLECTORS.

CURTIN-BEALS' MERCANTILE COLLECTION AGENCY, Room 323 Monadnock Bldg.

COLOR PRINTERS.

GALLOWAY LITHOGRAPHING CO, 1664 Howard. (See opp p 273.)

SCHMIDT LITHOGRAPH CO, 2d and Bryant. (See opp p 600.)

COMPRESSORS.

HENSHAW, BULKLEY & CO, 219-221 Spear.
JOSHUA HENDY IRON WORKS, 75 Fremont. (See left top lines.)

CONCRETE MIXERS.

HENSHAW, BULKLEY & CO, 219-221 Spear.

CONTRACTORS' MACHINERY.

HENSHAW, BULKLEY & CO, 219-221 Spear.
JOSHUA HENDY IRON WORKS, 75 Fremont. (See left top lines.)

COPPER—SHEET AND SOLDERING.

PACIFIC METAL WORKS, 153-159 1st.

CORRUGATED PAPER.

SCHMIDT LITHOGRAPH CO, 2d and Bryant. (See opp p 600.)

COUNTRY HOMES AND WATER PLANTS.

CALIFORNIA WATER SUPPLY CO, 567 Mission.



CULVERT PIPE.

18TH & DIVISION STS-S.F.
STEIGER TERRA COTTA & POTTERY WORKS
BET FOLSOM & HARRISON

OYSTER PARLORS

Tony's Restaurant
and Oyster House

1021 THIRD STREET
OPEN ALL NIGHT

GEO. PETROVICH & M. ZANBELICH, Proprietors
PRIVATE ROOMS FOR LADIES

HOME DESIGNER

CLASSIFIED BUSINESS DIRECTORY

987

CUT AND WIRE NAILS, BOLTS AND SPIKES.

JUDSON MANUFACTURING CO, 819-823 Folsom.

CUTS—HALF TONE.

COMMERCIAL ART CO (Inc), West Mission cor Brady. (See opp p 175.)

CYANIDE PUMPS.

KROGH MANUFACTURING CO, 127-133 Beale. (See last page.)

DEEP WELL PUMPS.

KROGH MANUFACTURING CO, 127-133 Beale. (See last page.)

DERRICK IRONS.

HENSHAW, BULKLEY & CO, 219-221 Spear.

JOSHUA HENDY IRON WORKS, 75 Fremont. (See left top lines.)

DESIGNERS—ART.

COMMERCIAL ART CO (Inc), West Mission cor Brady. (See opp p 175.)

DIAMOND DRILLS.

HENSHAW, BULKLEY & CO, 219-221 Spear.

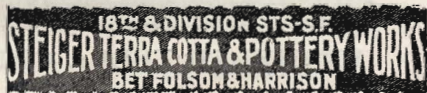
DIAMONDS.

SHREVE & CO, Van Ness av nw cor Sacramento.

DRAIN AND SEWER PIPE.



DRAIN TILE.



DREDGING PUMPS.

KROGH MANUFACTURING CO, 127-133 Beale. (See last page.)

DUMB WAITERS.

OTIS ELEVATOR CO, Stockton, North Point and Beach Sts. (See Front cover.)

NAVLET BROS.

Leading Florists and Seedsmen

520 K STREET, SACRAMENTO, CAL.

Phones: Sunset Main 872; Capital 606

LET ME DO YOUR PAINTING JOS. SAUNDERS | BOX 48. J STREET ROAD PHONE OAK 1176

WM. A. LANGLEY Bicycles and Repairing

Umbrellas and Repairing ∴ 1025 Tenth ∴ PHONE OAK 4791

MCLAUGHLIN DRAYING CO. INC.
SACRAMENTO, CALIFORNIA
STABLE PHONE: MAIN 298
115 K STREET
TELEPHONES: SUNSET MAIN 433
CAPITAL 701

988

SACRAMENTO CITY DIRECTORY CO'S.

ELECTRIC ELEVATORS.

OTIS ELEVATOR CO, Stockton, North Point and Beach Sts.- (See Front cover.)

ELECTRIC HOISTS.

HENSHAW, BULKLEY & CO, 219-221 Spear.
JOSHUA HENDY IRON WORKS, 75 Fremont. (See left top lines.)

ELECTRIC LOCOMOTIVES.

HENSHAW, BULKLEY & CO, 219-221 Spear.

ELECTROTYPERS.

SCHMIDT LITHOGRAPH CO, 2d and Bryant. (See opp p 600.)

ELEVATOR MNFRS.

OTIS ELEVATOR CO, Stockton, North Point and Beach Sts. (See front cover.)
VAN EMON ELEVATOR CO, 52-54 Natoma.

ELEVATOR REPAIRS.

OTIS ELEVATOR CO, Stockton, North Point and Beach Sts. (See front cover.)

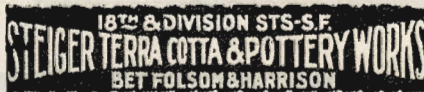
ELEVATORS.

OTIS ELEVATOR CO, Stockton, North Point and Beach Sts. (See front cover.)

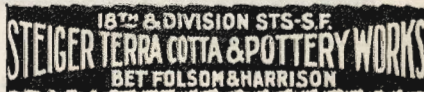
EMBOSSSED LABELS.

GALLOWAY LITHOGRAPHING CO, 1664 Howard. (See opp p 273.)

ENAMELED BRICKS.



ENAMELED TERRA COTTA.



ENGINE LATHES.

HENSHAW, BULKLEY & CO, 219-221 Spear.

The Creamerie Best Lunches in Town
Try Our Oyster Loaf

720 J

PHONE MAIN 185

American Dry Cleaning and Dye Works

Feathers and Gloves. We Make Your Old Clothes Look Like New. Ladies' Work a Specialty.
1515 TWENTIETH STREET

We Clean and Dye Rugs, Blankets, Lace Curtains, Portiers, Fancy Gowns, Furs, Work a Specialty.
PHONE M 131

CLASSIFIED BUSINESS DIRECTORY

989

ENGINES AND BOILERS.

EBY MACHINERY CO THE, 1220-1222 Myrtle, Oakland, and 268 Market S F. (See p 233.)

JOSHUA HENDY IRON WORKS, 75 Fremont. (See left top lines.)

ENGINES—GASOLINE.

JOSHUA HENDY IRON WORKS, 75 Fremont. (See left top lines.)

WOODIN & LITTLE PUMP HOUSE, 534-536 Mission.

ENGRAVERS.

GALLOWAY LITHOGRAPHING CO, 1664 Howard. (See opp p 273.)

ENGRAVERS AND DESIGNERS.

COMMERCIAL ART CO (Inc), West Mission cor Brady. (See opp p 175.)

ENGRAVERS—GENERAL.

COMMERCIAL ART CO (Inc), West Mission cor Brady. (See opp p 175.)

EXHAUSTS.

HENSHAW, BULKLEY & CO, 219-221 Spear.

FIRE BRICK.

18TH & DIVISION STS-S.F.
STEIGER TERRA COTTA & POTTERY WORKS
BET FOLSON & HARRISON

FIRE BRICK AND TILE.

GLADDING, McBEAN & CO.
EDDY & HYDE STS. PHONE FRANKLIN 40
SAN FRANCISCO. CAL.

FIRE BRICK DUST.

18TH & DIVISION STS-S.F.
STEIGER TERRA COTTA & POTTERY WORKS
BET FOLSON & HARRISON

FIRE CLAY.

18TH & DIVISION STS-S.F.
STEIGER TERRA COTTA & POTTERY WORKS
BET FOLSON & HARRISON

A. VAN ZEE
 General Contractor
 ...AND BUILDER...
 SACRAMENTO, CAL.
 2707 Eye Street
 PHONE: CAP. 619. 3 BELLS

Represented by

E. H. MCKEE
1025 Fourth Street
PHONE OAK 8461

Springfield Fire and Marine Ins. Co.
OF SPRINGFIELD, MASS.

Represented by

Reed & Elliott
1015 Fourth Street
PHONE MAIN 233

Poultry and Live Stock Supplies
F. F. Smith & Co.
 1008 JAY STREET, SACRAMENTO

FOR GO TO
MACHINERY JOSHUA HENDY IRON WORKS
 MANUFACTURERS
 75 FREMONT STREET, SAN FRANCISCO, CAL.

990

SACRAMENTO CITY DIRECTORY CO'S.

FIRE PROOFING.

18TH & DIVISION STS-S.F.
STEIGER TERRA COTTA & POTTERY WORKS
 BET FOLSON & HARRISON

FIRE TILE.

18TH & DIVISION STS-S.F.
STEIGER TERRA COTTA & POTTERY WORKS
 BET FOLSON & HARRISON

FIREWORKS.

CALIFORNIA FIREWORKS CO, 219 Front.

FLANGED PIPE FITTINGS.

KROGH MANUFACTURING CO, 127-133 Beale. (See last page.)

FLUE LININGS.

18TH & DIVISION STS-S.F.
STEIGER TERRA COTTA & POTTERY WORKS
 BET FOLSON & HARRISON

*FLUSH TANKS.

18TH & DIVISION STS-S.F.
STEIGER TERRA COTTA & POTTERY WORKS
 BET FOLSON & HARRISON

FREIGHT ELEVATORS.

OTIS ELEVATOR CO, Stockton, North Point and Beach sts. (See front cover.)

FRUIT SPRAYING CHEMICALS.

BRAUM F W CO, 303 Market and Mission nr 2d.

FUMIGATING CHEMICALS.

BRAUM F W CO, 303 Market and Mission nr 2d.

GAS ENGINES.

JOSHUA HENDY IRON WORKS, 75 Fremont. (See left top lines.)

GAS SERVICE FITTINGS—MANUFACTURERS.

ATLAS BRASS WORKS, 827-833 Folsom.

JOHN C. LUCE
 2430 TENTH STREET

Importer and Dealer in Domestic and Foreign Marble and Granite, Tombs, Tablets, Monuments, Etc.

Walters' Orchestra

LAURA C. WALTERS, LEADER

MUSIC FURNISHED FOR ALL OCCASIONS

1006 1/2 SEVENTH STREET

SACRAMENTO, CAL

CLASSIFIED BUSINESS DIRECTORY

991

GASOLINE ENGINES.

HENSHAW, BULKLEY & CO, 219-221 Spear.
JOSHUA HENDY IRON WORKS, 75 Fremont. (See left top lines.)
WOODIN & LITTLE PUMP HOUSE, 534-536 Mission.

GASOLINE HOISTS.

HENSHAW, BULKLEY & CO, 219-221 Spear.
JOSHUA HENDY IRON WORKS, 75 Fremont. (See left top lines.)

GLAZED TERRA COTTA.



GOVERNORS.

HENSHAW, BULKLEY & CO, 219-221 Spear.

GRADERS.

HENSHAW, BULKLEY & CO, 219-221 Spear.

HALF TONE CUTS.

COMMERCIAL ART CO (Inc), West Mission cor Brady.
(See opp p 175.)

HEATING AND VENTILATING MACHINERY.

HENSHAW, BULKLEY & CO, 219-221 Spear.

HOISTING ENGINES.

HENSHAW, BULKLEY & CO, 219-221 Spear.
JOSHUA HENDY IRON WORKS, 75 Fremont. (See left top lines.)

HOISTING MACHINERY.

JOSHUA HENDY IRON WORKS, 75 Fremont. (See left top lines.)

HOLLOW TILE FIRE PROOFING.



HORSE POWERS.

JOSHUA HENDY IRON WORKS, 75 Fremont. (See left top lines.)

921 AND 923 THIRD STREET

NATIVE CHINESE DISHES

NOODLES

CHOICE AMERICAN STYLES

SACRAMENTO, CALIFORNIA

WONG TONG
CHOP SUEY RESTAURANT
SUNSET PHONE, OAK 1546
WILLIE WONG
WOEY YEN LOW

PAPER

OF EVERY DESCRIPTION

CARRIED IN STOCK BY

BONESTELL, RICHARDSON & CO.

CALIFORNIA'S LEADING PAPER HOUSE

SAN FRANCISCO, - - CAL.

THE SUNDAY LEADER

Delivered to any part of the City or Oak Park at 25 cents per month

LARKIN & SON, PUBLISHERS - - - - - 307 J Street

Best Advertising
Medium for
Building Materials

DAILY PACIFIC BUILDER

DELIVERED DAILY
\$1.00 PER MONTH

Main Office, 1325 Mission St., San Francisco

Prints all the
Building News
of California

992

SACRAMENTO CITY DIRECTORY CO'S.

KROGH MANUFACTURING CO, 127-133 Beale. (See last page.)

HOSE.

WOODIN & LITTLE PUMP HOUSE, 534-536 Mission.

HYDRAULIC ELEVATORS.

OTIS ELEVATOR CO, Stockton, North Point and Beach Sts. (See front cover.)

HYDRAULIC MINING MACHINERY.

JOSHUA HENDY IRON WORKS, 75 Fremont. (See left top lines.)

INDIVIDUAL WATER PLANTS.

CALIFORNIA WATER SUPPLY CO, 567 Mission.



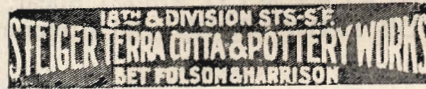
IRON TOOLS.

HENSHAW, BULKLEY & CO, 219-221 Spear.

IRON AND STEEL.

PACIFIC TOOL & SUPPLY CO, Charles Stallman, Mngr; Mission nw cor Fremont.

IRRIGATING PIPE.



IRRIGATING PUMPS.

HENSHAW, BULKLEY & CO, 219-221 Spear.
WOODIN & LITTLE PUMP HOUSE, 534-536 Mission.

IRRIGATION MACHINERY.

JOSHUA HENDY IRON WORKS, 75 Fremont. (See left top lines.)

JEWELERS.

SHREVE & CO, Van Ness av nw cor Sacramento.

KINKEAD MILLS.

HENSHAW, BULKLEY & CO, 219-221 Spear.

SACRAMENTO PLANING MILL & FURNITURE CO., Inc., MILL WORK
Scroll and Band Sawing, Turning, Store, Office, Bank and Bar Fixtures
Telephones, Capital 444-3b; Sunset, Oak 4131. **SIXTH AND R STREETS.**

Royal Gem Flour

PUREST
AND
WHITEST

CLASSIFIED BUSINESS DIRECTORY

993

LABELS.

GALLOWAY LITHOGRAPHING CO, 1664 Howard. (See opp p 273.)

SCHMIDT LITHOGRAPH CO, 2d and Bryant. (See opp p 600.)

LAUNDRY CHEMICALS.

BRAUM F W CO, 303 Market and Mission nr 2d.

LAUNDRY SUPPLIES.

BRAUM F W CO, 303 Market and Mission nr 2d.

LAUNDRY TRAYS AND SINKS.

GLADDING, McBEAN & CO.
EDDY & HYDE STS. PHONE FRANKLIN 40
SAN FRANCISCO. CAL.

LEAD, TIN, ZINC, ANTIMONY, ETC.

PACIFIC METAL WORKS, 153-159 1st.

LINK BELTING AND SPROCKETS.

EBY MACHINERY CO THE, 1220-1222 Myrtle, Oakland, and 268 Market S F. (See p 233.)

LINK CHAIN.

EBY MACHINERY CO THE, 1220-1222 Myrtle, Oakland, and 268 Market S F. (See p 233.)

HENSHAW, BULKLEY & CO, 219-221 Spear.

LINOTYPE, STEREOTYPE AND ELECTROTYPE METALS.

PACIFIC METAL WORKS, 153-159 1st.

LITHOGRAPHERS.

BRITTON & REY, 555 Commercial. (See opp p 123.)

GALLOWAY LITHOGRAPHING CO, 1664 Howard. (See opp p 273.)

SCHMIDT LITHOGRAPH CO, 2d and Bryant. (See opp p 600.)

MACHINE REPAIRING.

JOSHUA HENDY IRON WORKS, 75 Fremont. (See left top lines.)

MACHINE SHOP EQUIPMENT.

HENSHAW, BULKLEY & CO, 219-221 Spear.

Southwest Corner Fifth and J Streets

H. A. McCLELLAND CO. REAL ESTATE and INSURANCE

SACRAMENTO PLANING MILL & FURNITURE CO., Inc., MILL WORK

Interior and Hardwood Finish, Columns, Balusters, Mouldings, Etc.

Tels. Capital 444, 3 bells; Sunset, Oak 4131. - - Sixth and R Streets

NORTHWESTERN MUTUAL LIFE INSURANCE CO.

S. F. McANEAR, District Manager, 610 K St., Gerber Building Telephone: Vale 8721

994

SACRAMENTO CITY DIRECTORY CO'S.

MACHINE SHOP SUPPLIES.

PACIFIC TOOL & SUPPLY CO, Charles Stallman, Mngr;
Mission nw cor Fremont.

MACHINE TOOLS.

PACIFIC TOOL & SUPPLY CO, Charles Stallman, Mngr;
Mission nw cor Fremont.

MACHINERY.

EBY MACHINERY CO THE, 1220-1222 Myrtle, Oakland,
and 268 Market S F. (See p 233.)

JOSHUA HENDY IRON WORKS, 75 Fremont. (See left
top lines.)

PACIFIC TOOL & SUPPLY CO, Charles Stallman, Mngr;
Mission nw cor Fremont.

MACHINERY—ROCK CRUSHING.

JOSHUA HENDY IRON WORKS, 75 Fremont. (See left
top lines.)

MACHINISTS' AND ENGINEERS' SUPPLIES.

PACIFIC TOOL & SUPPLY CO, Charles Stallman, Mngr;
Mission nw cor Fremont.

MACHINISTS' TOOLS.

PACIFIC TOOL & SUPPLY CO, Charles Stallman, Mngr;
Mission nw cor Fremont.

MANTEL BRICK AND TILE.



MAP ENGRAVERS.

GALLOWAY LITHOGRAPHING CO, 1664 Howard. (See
opp p 273.)

MILLING MACHINES.

HENSHAW, BULKLEY & CO, 219-221 Spear.
JOSHUA HENDY IRON WORKS, 75 Fremont. (See left
top lines.)

MINING MACHINERY.

HENSHAW, BULKLEY & CO, 219-221 Spear.
JOSHUA HENDY IRON WORKS, 75 Fremont. (See left
top lines.)

Plans and Specifications Furnished.
Jobbing Promptly Attended To.
Residence: 2711 V Street; Phone Vale 9447
Office: 617 J Street; Phone Oak 9247

A. E. BLIVEN BUILDER

ARNOLD BROS. & CO. MACHINERY
MADE AND REPAIRED
1309-1311 J Street - - - - - **Gas Engine Experts**

TO BORROW MONEY
TO LOAN MONEY
TO SELL YOUR PROPERTY
TO BUY A PROPERTY

SEE

General Mortgage and Land Co.

PAID UP CAPITAL, \$100,000

1014 FOURTH STREET
SACRAMENTO, CAL.

CLASSIFIED BUSINESS DIRECTORY

995

MINING PUMPS.

HENSHAW, BULKLEY & CO, 219-221 Spear.
JOSHUA HENDY IRON WORKS, 75 Fremont. (See left
top lines.)
WOODIN & LITTLE PUMP HOUSE, 534-536 Mission.

MODELING CLAY.



MUNICIPAL WATER PLANTS.

CALIFORNIA WATER SUPPLY CO, 567 Mission.



MUSICAL INSTRUMENTS.

SHERMAN, CLAY & CO, 1635 Van Ness av.

NEWSPAPERS AND PUBLICATIONS.

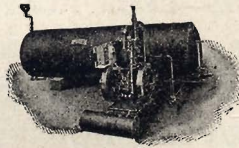
DAILY PACIFIC BUILDER, 1325 Mission. (See left side
lines.)

NOVELTIES—ADVERTISING.

BACHRACH & CO, 513 Market.

OFFICE BUILDING WATER PLANTS.

CALIFORNIA WATER SUPPLY CO, 567 Mission.



OFFICE STATIONERY.

GALLOWAY LITHOGRAPHING CO, 1664 Howard. (See
opp p 273.)

OIL BURNERS.

HENSHAW, BULKLEY & CO, 219-221 Spear.

OIL PUMPS.

KROGH MANUFACTURING CO, 127-133 Beale. (See last
page.)

WOODIN & LITTLE PUMP HOUSE, 534-536 Mission.

Automobiles

Is your
Auto.
out of
repair?

We can
fix it.

All work
guaran-
teed.

Second-
hand
cars
bought
and sold.

Autos.
stored
and
rented.

*Locomobile
Agency*

**Bryte &
Langner**

Garage and Shop

28th & M Sts.

Both Phones

Capital City Commercial College G. A. Pierce, Principal

1015 TENTH STREET, SACRAMENTO, CAL.

PHONE: OAK 8887

Furnishes Stenographers and Bookkeepers



HUSTON & TURNER

PHONE: MAIN 2433

EXCLUSIVE AGENTS SACRAMENTO COUNTY NORTHERN ELECTRIC RAILWAY LINES

603 J

Cascade Laundry
1515 TWENTIETH STREET
Telephones: Sunset Main 131; Capital 131

996

SACRAMENTO CITY DIRECTORY CO'S.

PAINTS, OILS AND VARNISHES.

BASS-HUETER PAINT CO, 1532 Market.

PAPER BAGS.

BONESTELL, RICHARDSON & CO, 473-485 6th. (See right bottom lines.)

PAPER BOXES—FOLDING.

SCHMIDT LITHOGRAPHING CO, 2d and Bryant. (See opp p 600.)

PAPER—WHOLESALE.

BONESTELL, RICHARDSON & CO, 473-485 6th. (See right bottom lines.)

PASSENGER ELEVATORS.

OTIS ELEVATOR CO, Stockton, North Point and Beach Sts.— (See front cover.)

PHOTO ENGRAVERS.

BRITTON & REY, 555 Commercial. (See opp p 123.)
COMMERCIAL ART CO (Inc), West Mission cor Brady. (See opp p 175.)

PIANOS AND ORGANS.

BALDWIN D H & CO, 1569 Van Ness av cor California.
SHERMAN, CLAY & CO, 1635 Van Ness av.

PIANO AND ORGAN MNFRS.

BALDWIN D H & CO, 2512-2514 Sacramento nr Fillmore.

PIANOS—SELF PLAYING.

SHERMAN, CLAY & CO, 1635 Van Ness av.

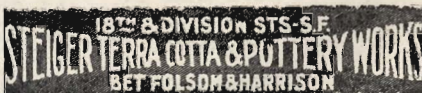
PIPE AND FITTINGS.

WOODIN & LITTLE PUMP HOUSE, 534-536 Mission.

PIPES—SEWER.



PIPES—VITRIFIED CLAY.



FASHION STABLES CHAS. W. PAINE. PROPRIETOR

HACKS, COUPES AND STYLISH TURNOUTS

510-514 K Street - - - - - Phones: Sunset Vale 581; Capital 181

EAST LAWN CEMETERY

Away from the noise and dirt of the city, but is within easy access. High and dry; commands a magnificent view of the city and surrounding country.

☛ Lots sold on easy terms.

OFFICE, 605 J STREET

Perpetual care guaranteed ☛

CLASSIFIED BUSINESS DIRECTORY

997

PLANERS.

HENSHAW, BULKLEY & CO, 219-221 Spear.

PLANING MILL MACHINERY.

EBY MACHINERY CO THE, 1220-1222 Myrtle, Oakland, and 268 Market S F. (See p 233.)

HENSHAW, BULKLEY & CO, 219-221 Spear.

JOSHUA HENDY IRON WORKS, 75 Fremont. (See left top lines.)

PLUMBERS' SUPPLIES.

LALLY CO, First and Folsom.

PNEUMATIC HAMMERS.

HENSHAW, BULKLEY & CO, 219-221 Spear.

PNEUMATIC MACHINERY.

HENSHAW, BULKLEY & CO, 219-221 Spear.

POWERS—HORSE.

WOODIN & LITTLE PUMP HOUSE, 534-536 Mission.

PRESSED BRICK.



PRINTERS—BOOK AND JOB.

BRITTON & REY, 555 Commercial. (See opp p 123.)

GALLOWAY LITHOGRAPHING CO, 1664 Howard. (See opp p 273.)

PUBLISHERS.

LARSEN L A, 1325 Mission. (See left side lines.)

PUMP MANUFACTURERS.

WOODIN & LITTLE PUMP HOUSE, 534-536 Mission.

PUMPING MACHINERY.

JOSHUA HENDY IRON WORKS, 75 Fremont. (See left top lines.)

SIMONDS MACHINERY CO, 12-14 Natoma.

WOODIN & LITTLE PUMP HOUSE, 534-536 Mission.

PUMPS.

KROGH MANUFACTURING CO, 127-133 Beale. (See last page.)

CARLAW BROS. Importers of Scotch and all other EASTERN GRANITES
Tenth and R Streets

CHICKEN RANCH N. Tracy Carpenter

ALL WHITE LEGHORN STOCK

Road Rear of Race Track

PHONE: SUNSET GROVE 37

LOCK BOX No. 14

CARROLL & NICOL

2431 Tenth St., N. E. CORNER
TENTH AND Y
PHONE: SUNSET OAK 3232

Granite and Marble Work of All Descriptions

Monuments, Headstones, Tablets, Cemetery Inclosures,
Etc. Building Stone, Street Curb, Crosswalks, Etc.

Artificial Cement Stones

Electric Power
Perfection Press

407 J STREET, up-stairs

998

SACRAMENTO CITY DIRECTORY CO'S

PUMPS—AIR.

WOODIN & LITTLE PUMP HOUSE, 534-536 Mission.

PUMPS—CENTRIFUGAL.

JOSHUA HENDY IRON WORKS, 75 Fremont. (See left top lines.)

WOODIN & LITTLE PUMP HOUSE, 534-536 Mission.

PUMPS—DEEP WELL.

SIMONDS MACHINERY CO, 12-14 Natoma.

PUMPS—ELECTRIC

WOODIN & LITTLE PUMP HOUSE, 534-536 Mission.

PUMPS—HAND AND WINDMILL.

WOODIN & LITTLE PUMP HOUSE, 534-536 Mission.

PUMPS—IRRIGATION.

WOODIN & LITTLE PUMP HOUSE, 534-536 Mission.

PUMPS—MINING.

WOODIN & LITTLE PUMP HOUSE, 534-536 Mission.

PUMPS—ROTARY.

WOODIN & LITTLE PUMP HOUSE, 534-536 Mission.

PUMPS—SHIP.

WOODIN & LITTLE PUMP HOUSE, 534-536 Mission.

PUMPS—SPRAY.

WOODIN & LITTLE PUMP HOUSE, 534-536 Mission.

PUMPS—STEAM.

JOSHUA HENDY IRON WORKS, 75 Fremont. (See left top lines.)

WOODIN & LITTLE PUMP HOUSE, 534-536 Mission.

PUMPS—TRIPLEX.

WOODIN & LITTLE PUMP HOUSE, 534-536 Mission.

QUARRY EQUIPMENT.

HENSHAW, BULKLEY & CO, 219-221 Spear.

J. GARFIELD LEITCH

WALTER LEITCH

ALBERT E. LEITCH

Leitch Drayage and Warehouse Co.

Can do your Draying and Storing as well and just as reasonable as any one in town. Spur track running right by the door.

SAVE ALL CARTAGE ON CARLOAD LOTS. BOTH PHONES. P. O. BOX No. 394. Office, 1215 Front Street

H. P. HARDMAN LADIES' TAILOR

ROOMS 1, 2, 3 AND 4, 718 J STREET—UP STAIRS

PHONE: SUNSET MAIN 1994

CLASSIFIED BUSINESS DIRECTORY

999

QUARTZ MACHINERY.

JOSHUA HENDY IRON WORKS, 75 Fremont. (See left top lines.)

QUARTZ MILL MACHINERY.

HENSHAW, BULKLEY & CO, 219-221 Spear.

RECLAMATION PUMPS.

KROGH MANUFACTURING CO, 127-133 Beale. (See last page.)

REGULATION BOWLING ALLEYS AND SUPPLIES.

BRUNSWICK BALKE-COLLENDER CO THE 17-27 Franklin.

ROAD MACHINERY.

HENSHAW, BULKLEY & CO, 219-221 Spear.

ROAD ROLLERS.

HENSHAW, BULKLEY & CO, 219-221 Spear.

ROCK CRUSHERS.

HENSHAW, BULKLEY & CO, 219-221 Spear.

JOSHUA HENDY IRON WORKS, 75 Fremont. (See left top lines.)

ROCK DRILLS.

HENSHAW, BULKLEY & CO, 219-221 Spear.

ROOF TILES—TERRA COTTA.



ROTARY PUMPS.

KROGH MANUFACTURING CO, 127-133 Beale. (See last page.)

SAFES.

DIEBOLD SAFE & LOCK CO, 523 Market.

PARCELLS SAFE CO, 523 Market.

SAND PUMPS.

KROGH MANUFACTURING CO, 127-133 Beale. (See last page.)

THE INTERNATIONAL PROTECTIVE ASSOCIATION (Inc.)
—COLLECTIONS AND—
COMMERCIAL REPORTS
An organization for the protection of merchants and professional men
PUBLISHERS OF THE COMMERCIAL DELINQUENT DEBTORS LIST, SHOWING THOSE NOT WORTHY OF CREDIT
ROOM 301, BRYTE BUILDING
SACRAMENTO, CAL.

TELEPHONE WOOD, COAL AND HAY YARD

T. J. DODDS *
SUCCESSOR TO THEO. J. WEISEL **FUEL AND FEED OF ALL KINDS**

1801 and 1807 S STREET, SACRAMENTO, CAL.

Sunset Phone Oak 1711

Hall & McDonell
 Electrical Contractors
 ...AND ENGINEERS FOR...
 EVERYTHING ELECTRICAL
 Phone: Vale 191
 1021 TENTH STREET

1000 SACRAMENTO CITY DIRECTORY CO'S.

SAW MILL MACHINERY.

EBY MACHINERY CO THE, 1220-1222 Myrtle, Oakland and 268 Market, S F. (See p 233.)
 JOSHUA HENDY IRON WORKS, 75 Fremont. (See left top lines.)

SAW MILLS.

HENSHAW, BULKLEY & CO, 219-221 Spear.

SCHOOLS AND COLLEGES.

HEALD'S BUSINESS COLLEGE, 425 McAllister. (See backbone and opp p 324.)

SCHOOLS OF ENGINEERING.

HEALD'S BUSINESS COLLEGE, 425 McAllister. (See backbone and opp p 324.)

SCHOOLS OF MINING.

HEALD'S BUSINESS COLLEGE, 425 McAllister. (See backbone and opp p 324.)

SCHOOL AND PHYSICAL APPARATUS.

BRAUM F W & CO, 303 Market and Mission nr 2d.

SCHOOLS OF SHORTHAND.

HEALD'S BUSINESS COLLEGE, 425 McAllister. (See backbone and opp p 324.)

SCHOOLS OF TELEGRAPHY.

HEALD'S BUSINESS COLLEGE, 425 McAllister. (See backbone and opp p 324.)

SEWER PIPE.

GLADDING, McBEAN & CO.
 EDDY & HYDE STS. PHONE FRANKLIN 40
 SAN FRANCISCO. CAL.

18TH & DIVISION STS-S.F.
STEIGER TERRA COTTA & PUTTERY WORKS
 BET FOLSOM & HARRISON

SEWERAGE PUMPS.

KROGH MANUFACTURING CO, 127-133 Beale. (See last page.)

SHEET MUSIC.

SHERMAN, CLAY & CO, 1635 Van Ness av.

Pacific Coast Investment Co. Ground Floor Investments
 ...in Land Our Specialty...

White Rose Wheat Flakes

For Your Breakfast. Delicious!

CLASSIFIED BUSINESS DIRECTORY

1001

SHINGLE AND MILL MACHINERY.

EBY MACHINERY CO THE, 1220-1222 Myrtle, Oakland,
and 268 Market S F. (See p 233.)

SHINGLE MILLS.

HENSHAW, BULKLEY & CO, 219-221 Spear.

SHOW CARDS.

GALLOWAY LITHOGRAPHING CO, 1664 Howard. (See
opp p 273.)

SIGNS—ADVERTISING.

BACHRACH & CO, 513 Market.

SILVERSMITHS.

SHREVE & CO, Van Ness av nw cor Sacramento.

SPRINKLING WAGONS.

HENSHAW, BULKLEY & CO, 219-221 Spear.

SPROCKET WHEELS.

EBY MACHINERY CO THE, 1220-1222 Myrtle, Oakland,
and 268 Market S F. (See p 233.)

STATIONERY—WHOLESALE.

BONESTELL, RICHARDSON & CO, 473-485 6th. (See
right bottom lines.)

STEAM ENGINES.

EBY MACHINERY CO THE, 1220-1222 Myrtle, Oakland,
and 268 Market S F. (See p 233.)

HENSHAW, BULKLEY & CO, 219-221 Spear.

JOSHUA HENDY IRON WORKS, 75 Fremont. (See left
top lines.)

STEAM FITTERS AND SUPPLIES.

LALLY CO, First and Folsom.

STEAM HAMMERS.

HENSHAW, BULKLEY & CO, 219-221 Spear.

STEAM PUMPS.

HENSHAW, BULKLEY & CO, 219-221 Spear.

STEAM SEPARATORS.

HENSHAW, BULKLEY & CO, 219-221 Spear.

The F. THOMAS
ALL GENERAL CLEANING AND DYEING
... 1012 TENTH STREET ...

Parisian Dyeing and Cleaning
WORKS
Organdies and Silk Dresses, Portiers, Blankets,
Lace Curtains, Feather Boas, Plumes and Robes.
Phones: Capital 633 and Sunset Vale 1771

C. P. MASSEY

1200 J STREET

WOOD, COAL,
COKE, BLOCKWOOD, ETC.

Telephone: Main 38

G. L. HERNDON *Contractor and Bricklayer*

ALL KINDS OF BRICK WORK

914 T STREET

Phone: Oak 1991

GENERAL CONTRACTOR
AND BUILDER

SEE PAGE 10

SACRAMENTO, CALIFORNIA

N. HARVIE

Telephone Sunset

2208 T STREET

1002

SACRAMENTO CITY DIRECTORY CO'S.

STEAMSHIP COMPANIES.

HAMBURG-AMERICAN LINE, 908 Market.

OCEANIC STEAMSHIP CO, 673 Market. (See last page.)

STEEL FILING CABINETS AND FURNITURE.

ART METAL CONSTRUCTION CO, 18 Grant av.

TALKING MACHINES.

SHERMAN, CLAY & CO, 1635 Van Ness av.

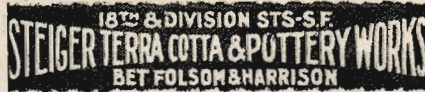
TANKS—MANUFACTURERS.

WOODIN & LITTLE PUMP HOUSE, 534-536 Mission.

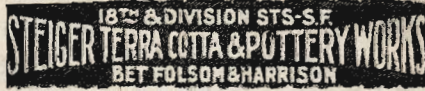
TENTS. AWNINGS AND HAMMOCKS.

KELLY BROS, 18-20 Clementina.

TERRA COTTA MANUFACTURERS.



TILE AND TILING.



TRANSPORTATION CO'S.

OCEANIC STEAMSHIP CO, 673 Market. (See last page.)

TRIPLEX PLUNGER PUMPS.

KROGH MANUFACTURING CO, 127-133 Beale. (See last page.)

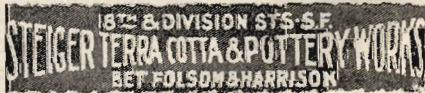
TURBINE PUMPS.

KROGH MANUFACTURING CO, 127-133 Beale. (See last page.)

TWINE.

BONESTELL, RICHARDSON & CO, 473-485 6th. (See right bottom lines.)

URNS AND TERRA COTTA.



Tony's Restaurant and Oyster House 1021 Third St.

GEO. PETROVICH & M. ZANBELICH, PROPRIETORS

Private Rooms For Ladies

Open at All Hours

HOME DESIGNER

CLASSIFIED BUSINESS DIRECTORY 1003

VACUUM PUMPS.

KROGH MANUFACTURING CO, 127-133 Beale. (See last page.)

VALVES.

KROGH MANUFACTURING CO, 127-133 Beale. (See last page.)

VASES.



WATCH IMPORTERS.

SHREVE & CO, Van Ness av nw cor Sacramento.

WATER PIPE—VITRIFIED CLAY.



WATER SERVICE FITTINGS—MNFERS.

ATLAS BRASS WORKS, 827-833 Folsom.

WATER WORKS PUMPS.

KROGH MANUFACTURING CO, 127-133 Beale. (See last page.)

WINDMILLS.

WOODIN & LITTLE PUMP HOUSE, 534-536 Mission.

WINE PUMPS.

KROGH MANUFACTURING CO, 127-133 Beale. (See last page.)

WOOD WORKING MACHINERY.

EBY MACHINERY CO THE, 1220-1222 Myrtle, Oakland, and 268 Market S F. (See p 233.)

HENSHAW, BULKLEY & CO, 219-221 Spear.

WROUGHT AND CAST IRON PIPE.

LALLY CO, First and Folsom.

ZINC ETCHINGS.

COMMERCIAL ART CO (Inc), West Mission cor Brady. (See opp p 175.)

Floral Designs of Every Description Made to Order at Reasonable Prices. Country Orders Solicited

NAVILET BROS.

Phones: Sunset Main 872; Capital 606

...520 K STREET...

U. L. Dike Investment Co. 631 J Main 641
 REAL ESTATE, LOANS, STOCKS AND BONDS

GREAT WESTERN DYE WORKS CORRECT WORK - RIGHT PRICES - PROMPT SERVICE
 Ladies' and Gents' Garments Dyed and Cleaned
 Works 818-820 R ST., PHONE OAK 1181
 Office 1008 K ST., PHONE VALE 4791

CALIFORNIA NATIONAL BANK

of Sacramento

ASSETS OVER \$9,000,000.00

UNITED STATES DEPOSITARY

DIRECTORS

W. E. Gerber C. W. Clarke Adolph Heilbron
 Joseph Steffens Fred J. Kiesel George W. Peltier
 Alden Anderson P. Bohl F. W. Kiesel

**The Leading Real Estate
 Dealers of the Sacramento Valley**

FARM LANDS



CITY REAL ESTATE

BUSINESS CHANCES
 INVESTMENTS

LOANS INSURANCE

Kleinsorge & Heilbron, 605 J Street
 REAL ESTATE AND INSURANCE

SUTTER HEIGHTS HOSPITAL See Page Op. Hospitals **S. E. COR. 21ST & T**