

# CARROLL & NICOL

2431 Tenth St., N. E. CORNER  
TENTH AND Y  
PHONE: SUNSET OAK 3232

## Granite and Marble Work of All Descriptions

Monuments, Headstones, Tablets, Cemetery Inclosures,  
Etc. Building Stone, Street Curb, Crosswalks, Etc.



**RING UP MAIN 689**

FOR BEST CEMENT STONES, TERRAZZO STEPS AND PLASTER DECORATIONS

Or Call at 407 J Street, up-stairs



918

SACRAMENTO CITY DIRECTORY CO'S.

### LIGHTING COMPANIES.

Central California Electric Co, 201 J.  
Sacramento Electric, Gas & Railway Co, 201 J.

### LIME, CEMENT, PLASTER, ETC.

Cady Foster, 20th cor R.  
Cowell Henry & Co, 509 I.  
Kreuzberger Bartle, 517 I.  
**MUDDOX H C, 30th cor K and 1015 L. (See p 9.)**  
O'Brien W J, 817 6th.  
Sacramento Coal Co, Front cor O.

### \*LINOLEUMS.

**BREUNER JOHN CO, 600-608 K.**

### LIQUOR DEALERS—WHOLESALE.

(See also Wines and Liquors—Wholesale.)

**CAPITAL MERCANTILE CO, 1014 8th. (See left center lines.)**

**SCHELD A P & CO, 2803 M. (See right center lines.)**

### LIQUOR DEALERS—RETAIL.

(See Saloons.)

### LITHOGRAPHERS.

**LARKIN J N & SON, 307 J. (See left top lines.)**  
**SCHMIDT LITHOGRAPH CO (S F). (See opp p 600.)**

### \*LIVE STOCK BREEDERS AND SHIPPERS.

Gerber E H, J nw cor 4th.  
Heilbron A & Bro, 605 J.

### LIVE STOCK SUPPLIES.

**SMITH F F & CO, 1008 J. (See left side lines.)**

### LIVERY, BOARDING AND SALE STABLES.

Arnold J H, 1222 J.  
Blackwell & Porter, 915 12th.  
Bradley W H & Sons, 1015 11th.  
California Sale Stable, 915 12th.  
Central Stables, 1021 J.  
Clark E R, rear 1209 K.  
**FASHION STABLES, 510-514 K. (See left bottom lines and Adv.)**  
Gerkin Wm, 1217 6th.

J. GARFIELD LEITCH

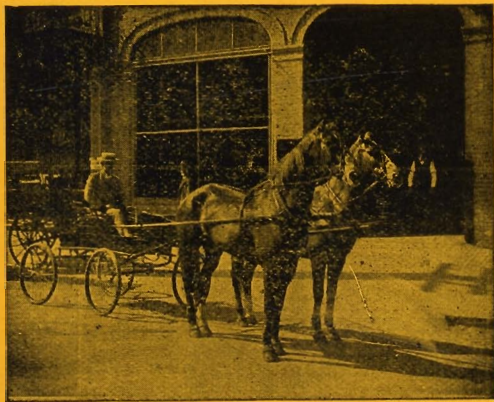
WALTER LEITCH

ALBERT E. LEITCH

**Leitch Drayage and Warehouse Co.** Can do your Draying and Storing as well

and just as reasonable as any one in town. Spur track running right by the door.

SAVE ALL CARTAGE ON CARLOAD LOTS. BOTH PHONES. P.O. BOX No. 394. Office, 1215 Front Street



# FASHION STABLES

---

---

Livery, Boarding  
and Feed Stable

HACKS, COUPES AND  
STYLISH TURNOUTS

**CHAS. W. PAINE**

---

---

Telephones  
Sunset Vale 581  
Capital 181

510-12-14 K Street  
SACRAMENTO - - CAL.



# H. P. HARDMAN LADIES' TAILOR

ROOMS 1, 2, 3 AND 4, 718 J STREET—UP STAIRS

PHONE: SUNSET MAIN 1934

CLASSIFIED BUSINESS DIRECTORY

919

Gillis Dougald, 919 8th.  
 Grafmiller Bros, 1018 9th.  
 Irvine W J, 1122 2d.  
 Kent Bros, 1617 3d.  
 L Street Stables, 619 L.  
 Lafferty F A, 1015 K.  
 Mason W C, 30th nr P.  
 Miller Bros, 918 9th.  
 Morshead & Putney, 530 L and 1208 6th.  
 Old Pavilion Stables, 1217 6th.  
**PAINE C W, 510-514 K.** (See left bottom lines and Adv.)  
 Pockman J M, 1103 J.  
 Sriver T D, 910 4th.  
 Smith J P, 2924 35th.  
 Stone & Smith, 726 L.  
 Wilson's Stables, 316 K.  
 Wright & Donnelly, 316 K.

### LOAN AGENTS.

**HENRY G B, 606 I.** (See top and bottom edges.)  
**NEWTON F A, 719½ K.** (See under Salary Loans.)  
**STAR LOAN CO THE, 3 Stoll Bldg.** (See Adv.)

## The Star Loan Co.

**Q** Loans Money to Clerks, Bookkeepers, Machinists, Engineers or any salaried employee on note without mortgage or indorser; business confidential. Our installment and rebate plan saves  $\frac{3}{4}$  the interest paid otherwise.

ROOM 3, STOLL BLDG.

Phone Oak 336

### \*LOANS.

**BROOKE REALTY CO (INC), 618 J and 2926 35th.** (See back cover.)  
**CARMICHAEL CO THE, 800 J.** (See left center lines and under Real Estate.)  
 Coney's Loan Office, 313 K.  
**DIKE U L INVESTMENT CO, 631 J.** (See top back cover.)  
 Heisen A C, 624 I.  
**HUSTON & TURNER, 603 J.** (See left top lines.)  
 Johnson H H, 614 I.

**THE INTERNATIONAL PROTECTIVE ASSOCIATION (INC.)**  
 ...COMMERCIAL REPORTS AND...  
 COLLECTIONS OUR SPECIALTY  
 ROOM 301, BRYTE BUILDING  
 We have expert attorneys in every city in America under contract to assist us in locating debtors and collecting claims  
 NO COLLECTION—NO CHARGE

## TELEPHONE WOOD, COAL AND HAY YARD

**T. J. DODDS** ———— **FUEL AND FEED OF ALL KINDS**  
 \* SUCCESSOR TO THEO. J. WEISEL

1801 and 1807 S STREET, SACRAMENTO, CAL.

Sunset Phone Oak 1711



EVERYTHING  
ELECTRICAL

HALL &amp; McDONELL

COUNTRY ORDERS SOLICITED

1021 TENTH STREET

Phone: Vale 191

920

SACRAMENTO CITY DIRECTORY CO'S.

McCLELLAND H A CO, 430 J. (See right side lines.)  
 NATHAN & MICHEL, 708 J.  
 OAK PARK REALTY CO, 2926 35th. (See right center lines)  
 PACIFIC COAST INVESTMENT CO, 507 J. (See left  
 bottom lines and under Investments.)  
 PEOPLE'S SAVINGS BANK, 400 J. (See last page.)  
 REED & ELLIOTT, 1015 4th. (See right center lines.)  
 STAR LOAN CO THE, 3 Stoll Bldg. (See under Loan  
 Agents.)  
 TENNYSON-FENTON REALTY CO, 915 7th.  
 UNCLE IKE'S COLLATERAL LOAN BANK, 231 K. (See  
 right center lines and Adv.)

## Uncle Ike's Collateral Loan Bank

231 K Street

**Money Loaned at Low Rate of Interest**

BRANCH BANKS

San Francisco, Fresno, Bakersfield and Los Angeles

WESTERN LOAN CO (Chattel and Salary Loans), 19 Stoll  
 Bldg.  
 ZEMANSKY'S LOAN & TRUST CO, 231 K. (See right  
 center lines and Adv.)

### LOCKSMITHS AND BELL HANGERS.

Boyd W E, 811 18th.  
 LANGLEY WM A, 1025 10th. (See left top lines.)  
 Rogers H C, 1224 J.

### \*LOCOMOBILES.

BRYTE &amp; LANGNER, 2720 M. (See right side lines.)

### LODGING HOUSES.

(See also Furnished Rooms, also Hotels.)

Arcade House, 1006½ 2d.  
 Bagge Mrs Maren, 1012 K.  
 Carducci F G, 1010 3d.  
 Carney Mrs Frances, 1006½ 9th.  
 Cecchettini & Bondi, 1108 2d.  
 Cramer Mrs M M, 1025 3d.

Invest in Real Estate through the **Pacific Coast Investment Co.**All our clients make money, as we handle nothing but gilt edge properties; something we would buy our  
selves if we had the money; or something we have already purchased

507 J STREET, SACRAMENTO



# White Rose Wheat Flakes

For Your Breakfast. Delicious!

CLASSIFIED BUSINESS DIRECTORY

921

Denver House, 216 K.  
Dillman Mrs Elizabeth, 1018½ 3d.  
Eldred House, 1012 K.  
Elias P A, 1214 2d.  
Field Mrs Martha, 1011½ 2d.  
Fiock John, 618 I.  
Franson Mrs Anna, 1015½ 10th.  
Gumm Mrs Elizabeth, 1005 2d.  
Haruki M, 1205 3d.  
Jones Mrs Clara, 1009½ 3d.  
Joslyn Mrs Nellie, 620 I.  
Lee Mrs A R, 1015 7th.  
Lenzi Angelo, 817½ 2d.  
Lohoff Max, 314½ J.  
McCoon Frank, 216 K.  
Mansfield Mrs Eliza, 1016 9th.  
Matsui J K, 214 L.  
May W F, 1123 Front.  
Mizutani R, 113½ K.  
O'Connor Thomas, 112 J.  
Ragsdale Mrs Mabel, 111 K.  
Regan Mrs Annie, 205½ K.  
Riordan Mrs Jane, 1022 3d.  
Salvation Army Workingmen's Home, 212 K.  
Sweeney Mrs Mary, 1021½ Front.  
Taguchi K, 220 L.  
Taylor May, 1012½ 9th.  
Thiele Mrs Rose, 528 I.  
Tripp Mrs Emma, 128 J.  
Uhlig Oswald, 323½ K.  
Wharton D E, 1017½ 2d.  
Zetz & Petrovich, 1013 2d.

## LUMBER MANUFACTURERS AND DEALERS.

(See also Planing Mills.)

California Pine Box & Lumber Co, Front cor M.  
Frazer E F, 5th se cor L.  
Friend & Terry Lumber Co, 1220 2d.  
Knox W F, 2d and M and Front and O.  
WATERHOUSE & LESTER CO, 709-715 J. (See adv under  
Hardware.)

\*LUNCHES.

CREAMERIE THE, 720 J. (See left bottom lines.)

## MACARONI MANUFACTURERS.

Nishimoto A, 313 L.  
Takemura T, 303½ L.

# C. P. MASSEY

1200 J STREET

# WOOD, COAL, COKE, BLOCKWOOD, ETC.

Telephone: Main 38

**The F. THOMAS** Parisian Dyeing and Cleaning  
**WORKS**  
ALL GENERAL CLEANING AND DYEING  
... 1012 TENTH STREET ...  
Organdies and Silk Dresses, Portiers, Blankets,  
Lace Curtains, Feather Boas, Plumes and Robes.  
Phones: Capital 633 and Sunset Vale 1771



GENERAL CONTRACTOR  
AND BUILDER

SEE PAGE 10

SACRAMENTO, CALIFORNIA

N. HARVIE

Telephone Sunset

2208 T STREET

922

SACRAMENTO CITY DIRECTORY CO'S.

**\*MACHINE REPAIRING.**

BRYTE & LANGNER, 2720 M. (See right side lines.)  
CAPITOL MACHINE & AUTO CO, 709-711 L and 1800 R.  
(See p opp Automobiles.)

**\*MACHINERY.**

BRYTE & LANGNER, 2720 M. (See right side lines.)  
CAPITOL MACHINE & AUTO CO, 709-711 L and 1800 R.  
(See p opp Automobiles.)  
PRICE G W PUMP CO, 1015 10th.  
STRAIT C D, 1301 J. (See adv under Gas Engines.)

**\*MACHINERY—ELECTRICAL.**

BRYTE & LANGNER, 2720 M. (See right side lines.)  
CAPITOL MACHINE & AUTO CO, 709-711 L and 1800 R.  
(See p opp Automobiles.)

**\*MACHINERY—IRRIGATING.**

STRAIT C D, 1301 J. (See under Gas Engines.)  
MACHINERY—MNFRS, DEALERS AND REPAIRERS.  
CAPITOL MACHINE & AUTO CO, 709-711 L and 1800 R.  
(See p opp Automobiles.)

**\*MACHINERY—MINING.**

STRAIT C D, 1301 J. (See under Gas Engines.)  
**\*MACHINERY MOVERS.**

PILE A M, 1722 E. (See p 18.)

**\*MACHINERY—PUMPING.**

BRYTE & LANGNER, 2720 M. (See right side lines.)  
CAPITOL MACHINE & AUTO CO, 709-711 L and 1800 R.  
(See p opp Automobiles.)  
STRAIT C D, 1301 J. (See under Gas Engines.)

**\*MACHINERY SUPPLIES**

BRYTE & LANGNER, 2720 M. (See right side lines.)  
CAPITOL MACHINE & AUTO CO, 709-711 L and 1800 R.  
(See p opp Automobiles.)  
STRAIT C D, 1301 J. (See under Gas Engines.)

**MACHINISTS.**

(See also Foundries and Machinists.)

BRYTE & LANGNER, 2720 M. (See right side lines.)  
CAPITOL MACHINE & AUTO CO, 709-711 L and 1800 R.  
(See p opp Automobiles.)

**OYSTER PARLORS**

Tony's Restaurant  
and Oyster House

1021 THIRD STREET  
OPEN ALL NIGHT

GEO. PETROVICH & M. ZANBELICH, Proprietors  
PRIVATE ROOMS FOR LADIES



HOME DESIGNER

CLASSIFIED BUSINESS DIRECTORY

923

Carmichael Daniel, 206 1/2 2d av.  
Davies J G, 1120 3d.  
Rogers & d'Artenay Mnfg Co, 1817 15th.  
Sacramento Foundry and Machine Wks, Front ne cor N.  
VEACH & SNOW, 410 J. (See right center lines.)

MACHINISTS' SUPPLIES.

WATERHOUSE & LESTER CO, 709-715 J. (See under Hardware.)

MAGNETIC HEALERS.

Hagely John, 1916 I.

MALT.

SACRAMENTO MALT HAUSE, 2800 M.  
Star Roller Mills, 1016 5th.

MANICURES.

Cook Mrs C B, 613 P.  
Peck Mrs Eva, 613 P.  
Robinson L L, 1715 8th.

MANTELS—CEMENT.

CENTRAL CALIFORNIA CEMENT CONSTRUCTION CO, 407 J. (See left side lines and p 16.)

MANTLES, GRATES AND TILE.

BRENNAN T I, 920 J. (See p 8.)

MANUFACTURERS—AGENTS.

AUBERTUS A M, 507 J. (See opp p 81.)  
Donnell A I, 129 J.  
Edwards A W, 1529 7th.  
Figg E J & Co, 118 J.  
Montfort L C, 1311 L.  
Nye B M, 610 K.  
Phillips S M & Co, 1523 Front.

MANUFACTURING JEWELERS.

(See Jewelers Mnfg.)

MANUFACTURING MACHINISTS.

VEACH & SNOW, 410 J. (See right center lines.)

MARBLE AND GRANITE WORKS.

CARLAW BROS, 10th and R. (See right side lines.)

NAWLET BROS.

Leading Florists and Seedsmen

520 K STREET, SACRAMENTO, CAL.

Phones: Sunset Main 872; Capital 606

LET ME DO YOUR PAINTING  
JOS. SAUNDERS | BOX 48. J STREET ROAD  
PHONE OAK 1176



# WM. A. LANGLEY *Bicycles and Repairing*

Umbrellas and Repairing ∴ 1025 Tenth ∴ PHONE OAK 4791

**MCLAUGHLIN DRAYING CO. INC.**  
**SACRAMENTO, CALIFORNIA**  
**115 K STREET**  
TELEPHONES: SUNSET MAIN 433 CAPITAL 701  
STABLE PHONE: MAIN 298

924 SACRAMENTO CITY DIRECTORY CO'S.

CARROLL & NICOL, 2431 10th. (See left top lines and under Monuments.)

Harder Otto, 2415 10th.

Howarth George, 1902 10th.

LUCE J C, 2430 10th. (See left bottom lines.)

### \*MARBLE—MOAIC.

CENTRAL CALIFORNIA CEMENT CONSTRUCTION CO, 407 J.- (See left side lines and p 16.)

### \*MARINE ENGINES

LAMB MARINE ENGINES, 1301 J. (See under Gas Engines.)

### MATTRESS MANUFACTURERS.

BREUNER JOHN CO, 600-608 K.

Burtless W H, 811 J.

### MASON CONTRACTORS.

(See also Contractors—Brick and Stone.)

MURRAY GEORGE & SON, 1716 M. (See p 14.)

### MEAT MARKETS.

Amaya & Atkinson, 1331 2d.

Buchman & Farrell, 728 J.

Chamberlain George, 2426 O.

City Market, 1011 2d.

Clauss & Kraus, 1700 I.

Emerine Martin, 312 K.

Golden State Market, 1403 O.

Gostick Bros, 3514 Magnolia av.

Hauser August, 928 N.

Hong Wo & Co, 907 3d.

Leach F C, 431 12th.

Lee T W, 2000 J.

Lowell Freeman, 2927 P.

Menke Martin, 1328 7th.

Metzger Alexander, 2006 M.

Mohr & Yoerk Packing Co, 1024 J.

Phoenix Market, 2000 J.

Pritchard G S, 1017 6th and 2917 35th.

Railroad Market, 2d ne cor O.

Remick A C & Son, 1011 2d.

Ruhe H F, 1001 Q.

Salcedo F J, 10th se cor J.

Schmid & Parker Pkg Co, 1400 J.

# The Creamerie

PURE ♦ CREAMERY

## BUTTER

720 J

PHONE MAIN 185



# American Dry Cleaning and Dye Works

Feathers and Gloves. We Make Your Old Clothes Look Like New. Ladies' 1515 TWENTIETH STREET

We Clean and Dye Rugs, Blankets, Lace Curtains, Portiers, Fancy Gowns, Furs, Work a Specialty. PHONE M 131

CLASSIFIED BUSINESS DIRECTORY

925

Schulmeyer & White, 2d ne cor O.  
Schwartz Clemens, 730 M.  
Schwartz E J, 1001 Q.  
Showler T H, 1014 28th.  
Silva & Russi, 400 M.  
Tahoe Market, 2416 K.  
Van Derveer M P, 3d cor M.  
Weber & Brunner, 1030 H.  
Wissig C H, 2416 K.

## MEATS—WHOLESALE.

Cudahy Packing Co, 903 Front.  
Mohr & Yoerk Pkg Co, 1024 J.  
Schmid & Parker Pkg Co, 1400 J.  
Swanston C & Son, 27-28 Stoll Bldg.  
Western Meat Co, 806-814 6th.

## MECHANICAL ENGINEERS.

VEACH & SNOW, 410 J. (See right center lines.)

## MEDICINE MANUFACTURERS.

(See also Patent Medicines; also Proprietary Remedies.)

Kelly's Rheumatic Syrup Co, 1326 J.  
Schaeffle C C, 621 1/2 J.  
Star Bitters Co, 415 19th.  
Williams Homer, 2000 H.

## MEN'S FURNISHINGS.

Elkus Albert, 824 K.  
Gorman Lee, 605 K.  
Greenebaum Rudolph, 612 J.  
Petrie W M, 622 J.  
Sun Co The, 328 K.  
Tsuda I Co, 1020 3d.

## MERCANTILE AGENCIES.

Bradstreet's Mercantile Agency, 11 Stoll Bldg.  
INTERNATIONAL PROTECTIVE ASSOCIATION THE,  
301 Bryte Bldg. (See right side lines.)

## MERCHANT TAILORS.

(See also Tailors.)

Bock George, 528 J.  
GUILLOT P R, 1010 8th.  
HANSON OTTO, 520 J.  
HARDMAN H P, 718 J. (See right top lines and p 3.)

2707 Eye Street  
PHONE: CAP. 619. 3 BELLS  
A. VAN ZEEB  
General Contractor  
AND BUILDER...  
SACRAMENTO, CAL.

Represented by  
**E. H. MCKEE**  
1025 Fourth Street  
PHONE OAK 8467

**Springfield Fire and Marine Ins. Co.**  
OF SPRINGFIELD, MASS.

Represented by  
**Reed & Elliott**  
1015 Fourth Street  
PHONE MAIN 233



**Poultry and Live Stock Supplies**  
**F. F. Smith & Co.**  
 1008 JAY STREET, SACRAMENTO

926 SACRAMENTO CITY DIRECTORY CO'S.

Kromer John, 910 J.  
 McDougall Donald, 706½ K.  
 Schoefer Theodore, 1010 4th.  
 Scotch Tailors, 802 K.  
 Sorensene Hans, 621½ J.  
 Stone Samuel, 431 K.  
**STRAUB THE TAILOR, 907 K.**

**MESSENGER COMPANIES.**

American District Telegraph Co, 1015 2d.  
 Crescent Messenger Co, 1125 2d.  
 Lachenmyer Fred, 319 J.

**\*MIDWIVES.**

(See also Nurses.)

Harvey Mrs Angelia, 520 L.  
 Kuntz Mrs A M, 2824 N.  
 Kurz Mrs Emma, 1210 H.

**MILL WORK.**

BANTA A J, rear 314 10th. (See p 7.)  
 BURNETT & SONS, R bet 23d and 24th. (See p 7.)  
**SACRAMENTO MILL & FURNITURE CO, 6th and R.**  
 (See bottom lines and p 6.)

**MILLINERY.**

PEALER MRS M A, 721 K. (See p 531.)

**\*MIMEOGRAPH COPYING.**

WINCHESTER MRS VERA, 1004 5th. (See left bottom lines.)

**MINERAL WATERS.**

Aristo Mineral Water & Syphon Co, 209 J.  
 Shasta Water Co, 802 2d.  
 Whiskey Hill Water Co, 611 16th.

**MINES AND MINING.**

Ashburton Mining Co, 1005 K.  
 Basler Mining and Development Co, 7 Masonic Temple.  
 California Mohawk Mining, Land & Lumber Co, 1010 8th.  
 Diamond Milling C, 118 J.  
 Elouise Mining Co, 7 Masonic Temple.  
 Manhattan Gold and Copper Mining Co, 706½ K.  
 Peters J G Mining Co, 1006½ 7th.  
**PNEUMATIC DREDGE CO, 719½ K.**

**JOHN C. LUCE**  
 2430 TENTH STREET

Importer and Dealer in Domestic and Foreign Marble and Granite, Tombs, Tablets, Monuments, Etc.



# Walters' Orchestra

LAURA C. WALTERS, LEADER

MUSIC FURNISHED FOR ALL OCCASIONS

1006 1/4 SEVENTH STREET - - - - - SACRAMENTO, CAL.

CLASSIFIED BUSINESS DIRECTORY

927

Walker Lake Gold Mining & Milling Co, 617 J.  
Western Realty & Brokerage Co, 918 7th.

### MINING ENGINEERS.

Routledge W H Co, 706 1/2 K.

### MINING INVESTMENTS.

Routledge W H Co, 607 1/2 K.

### \*MISSION FURNITURE.

BANTA A J, rear 314 10th. (See p 7.)  
BURNETT & SONS, R bet 23d and 24th. (See p 7.)  
GILSON M, 1630 R. (See p 6.)  
SAC PLANING MILL & FURNITURE CO, 6th and R.  
(See bottom lines and p 6.)

### \*MONUMENTS.

(See also Marble and Granite Wks.)

CARLAW BROS, 10th and R. (See right side lines.)  
CARROLL & NICOL, 2431 10th. (See left top lines and adv.)

## CARROLL & NICOL

Granite and Marble Work of All Descriptions, Monuments, Headstones, Tablets, Cemetery Inclosures, Etc. Building Stone, Street Curb, Crosswalks, Etc.

2431 10th St. N. E. Cor, Tenth and Y Telephone, Sunset Oak 3232 Sacramento, Cal.

LUCE J C, 2430 10th. (See left bottom lines.)

### \*MORTGAGE LOANS.

GENERAL MORTGAGE & LAND CO, 1014 4th. (See right top lines.)  
GIBBONS F C, 1014 4th. (See right top lines.)  
McCLELLAND H A CO, 430 J. (See right side lines.)

### \*MOSAIC MARBLE.

CENTRAL CALIFORNIA CEMENT CONSTRUCTION CO, 407 J. (See left side lines and p 16.)

WONG TONG  
SUNSET PHONE, OAK 1846  
WILLIE WONG  
CHOP SUEY RESTAURANT  
NATIVE CHINESE DISHES  
921 AND 923 THIRD STREET  
NOODLES  
CHOICE AMERICAN STYLES  
SACRAMENTO, CALIFORNIA  
WOEY YEN LOW

# PAPER

OF EVERY DESCRIPTION

CARRIED IN STOCK BY  
BONESTELL, RICHARDSON & CO.  
CALIFORNIA'S LEADING PAPER HOUSE  
SAN FRANCISCO, - - CAL.



# THE SUNDAY LEADER

Delivered to any part of the City or Oak Park at 25 cents per month

LARKIN & SON, PUBLISHERS - - - - 307 J Street

928

SACRAMENTO CITY DIRECTORY CO'S.

Best Advertising

Medium for

Building Materials

# DAILY PACIFIC BUILDER

DELIVERED DAILY  
\$1.00 PER MONTH

Main Office, 1325 Mission St., San Francisco

Prints all the

Building News

of California

## \*MOTORS—ELECTRIC.

BRYTE & LANGNER, 2720 M. (See right side lines.)

## \*MOULDINGS.

BANTA A J, rear 314 10th. (See p 7.)

BURNETT & SONS, R bet 23d and 24th. (See p 7.)

GILSON M, 1630 R (See p 6.)

SAC PLANING MILL & FURNITURE CO, 6th and R. (See bottom lines and p 6.)

## MUSIC DEALERS.

Cooper Music Co, 610 J.

Marx Ellas Music Co, 905 K.

## MUSIC TEACHERS.

Anderson G A, 714 11th.

Baldwin Pearl, 1420 8th.

Banz Adolph, 1620 12th.

**BARRETT MARY C, 1708 M.**

Barthel Florence, 1616 11th.

Bayless M C, 3314 Orange av.

Becker J S, 730 N.

Billings Hattie, 1114 O.

Blue M J, 1331 L.

Brainard A L, 331 O.

Brier Mrs M N, 504 21st.

Bromley J R, 302 F.

Campbell Fannie, 1427 O.

Carlaw J M, 2425 10th.

Carpenter M E, 1701 O.

Claypool E F E, 809½ 20th.

CONSERVATORY OF MUSIC, 1006½ 7th. (See right top lines.)

Daroux N A, 1130 Q.

De Coe C A, 1220 K.

Driver Morris, 1730 H.

Ford Marie, 917 M.

Franz G B, 501 K.

Fraser J M, 1301 P.

Geery Zueletta, 1012 19th.

Gerrish Gertrude, 1517 G.

Griffitts E P, 1231 H.

Harris J H, 1315½ E.

Howarth Mrs Minnie, 1425 8th.

Hyer Manuel A, 529½ K.

Johnson E B, 1726 O.

Johnson F M, 1235 L.

**SACRAMENTO PLANING MILL & FURNITURE CO., Inc. MILL WORK**  
Scroll and Band Sawing, Turning, Store, Office, Bank and Bar Fixtures  
Telephones, Capital 444-3b: Sunset, Oak 4131. **SIXTH AND R STREETS**



# Royal Gem Flour

PUREST  
AND  
WHITEST

CLASSIFIED BUSINESS DIRECTORY

929

Kirn Mrs Lulu, 717 11th.  
Lewis M A, 3130 Magnolia av.  
Lichthardt Mary, 1800 M.  
Linthicum Florence, 911 25th.  
Lloyd Robert, 2318 M.  
McAllister P M, 3722 Park av.  
McCurdy C M, 3715 Cypress av.  
Matson Christina, 1420 12th.  
Metropolitan Conservatory of Music, 426½ J.  
Moeller Mrs Frances, 700 L.  
Montgomery M M, 2909 C.  
Morrison Ethel, 2000 K.  
Neumann Emma, 228 M.  
Niche Fred, 815 J.  
O'Brien M E, 409 T.  
Paynter Mrs G R, 1115 G.  
Pope M M, 1408 I.  
Porterfield Mrs L B, 1811 G.  
Price Hattie, 1227 L.  
Pritchard H M, 619 19th.  
Ralls Mrs Laura, 1318 10th.  
Roberts Della, 912 14th.  
Smith B E, 1615 G.  
Sonne Elizabeth, 1417 P.  
Stone E C, 915 28th.  
Tandy F D, 912 14th.  
**WALTERS MRS L C, 1006½ 7th. (See right top lines.)**  
Wenzel Florine, 412 M.

## MUSIC AND MUSICAL INSTRUMENTS.

**BREUNER JOHN CO, 600-608 K.**  
Cooper Music Co, 610 J.  
Pommer A J Co, 829 J.  
**ZEMANSKY'S LOAN & TRUST CO, 231 K. (See right  
center lines and under Loans.)**

## NEEDLE WORK.

Sibley Mrs Harriet, 627½ J.

## NEWS AND PERIODICALS.

(See Booksellers and Stationers.)

## NEWS DEALERS.

(See also Booksellers and Stationers.)

Denison News Co, S P Depot.  
Earp V A, 619 N.

**H. A. McCLELLAND CO.**  
Southwest Corner Fifth and J Streets  
**REAL ESTATE  
and INSURANCE**

**SACRAMENTO PLANING MILL & FURNITURE CO., Inc., MILL WORK**  
Interior and Hardwood Finish, Columns, Balusters, Mouldings, Etc.  
Tels. Capital 444, 3 bells; Sunset, Oak 4131. - - Sixth and R Streets



# NORTHWESTERN MUTUAL LIFE INSURANCE CO.

S. F. McANEAR, District Manager, 610 K St., Gerber Building Telephone: Vale 8721

930

SACRAMENTO CITY DIRECTORY CO'S.

## NEWSPAPER AGENCIES.

Ohfu Shimbun, 1224 3d.  
San Francisco Call, 706 J.  
San Francisco Chronicle, 429 K.  
San Francisco Examiner, 1011 7th.  
Smith's Magazine Bureau, 610 K.  
Soko Shimbun (S F), 1224 3d.

## \*NEWSPAPERS.

(See p 43.)

## \*NOTARIES PUBLIC.

(This list is incomplete. Only those are classified who request it.)

Beckwith C M, 719½ K.  
BLOOMER F R M, 504½ J. (See adv under Real Estate.)  
DIKE U L INVESTMENT CO, 631 J. (See top back cover.)  
Driver B F, 401 J.  
Driver P S, 401 J.  
ELLIOTT ARTHUR W, 1015 4th.  
Finn M E, 10 Stoll Bldg.  
Glenn & Waring, 401 J.  
HENRY G B, 606 I. (See top and bottom edges.)  
HUSTON & TURNER, 603 J. (See left top lines.)  
KROMER GEORGE, 611 J. (See opp Real Estate.)  
LAWRENCE F LEO, 1007 7th.  
McKisick R T, 43 Stoll Bldg.  
O'Brien F J, 409 Bryte Bldg.  
Panabaker E E, 1002 J.  
Smith S B, 617 J.  
Wahrhaftig M S, 405 J.  
Ward John, 218 6th av.  
WINCHESTER MRS VERA, 1004 5th.

## NOTIONS, TOYS AND FANCY GOODS.

Charlton E P & Co, 522-524 K.  
Hinkson & McClatchy, 1021 6th.  
Honda T, 907 4th.  
Lewis Mrs M E, 2010 H.  
Quong Hung Co, 312 I.

## NOTIONS—WHOLESALE.

Hopkins A S Co, Front cor L.

## \*NOVELTY WOOD WORK.

BANTA A J, rear 314 10th. (See p 7.)  
BURNETT & SONS, R bet 23d and 24th. (See p 7.)

Plans and Specifications Furnished.  
Jobbing Promptly Attended To.

Residence: 2711 V Street; Phone Vale 9447  
Office: 617 J Street; Phone Oak 9247

# A. E. BUILDER

**ARNOLD BROS. & CO. MACHINERY**  
MADE AND REPAIRED  
1309-1311 J Street - - - - - **Gas Engine Experts**



TO BORROW MONEY  
TO LOAN MONEY  
TO SELL YOUR PROPERTY  
TO BUY A PROPERTY

**SEE**

General Mortgage and Land Co.  
PAID UP CAPITAL, \$100,000  
1014 FOURTH STREET  
SACRAMENTO, CAL.

CLASSIFIED BUSINESS DIRECTORY

931

GILSON M, 1630 R. (See p 6.)

SAC PLANING MILL & FURNITURE CO, 6th and R. (See  
bottom lines and p 6.)

**NURSERYMEN.**

(See also Florists.)

Ebel Frederick, 1601 10th.

Jenks W M, 1226 K.

Kunz Frank, 2129 10th.

McWilliams Hugh, 2102 12th.

NAVLET BROS, 520 K. (See right side lines.)

O'Brien Bros, B sw cor 31st.

Union Nursery, 2129 10th.

**NURSES.**

(See also Midwives.)

Arnold Clara, 629 15th.

Ballard A E, 626 12th.

Barney Mrs E A, 319 M.

Baxter May, 1310 10th.

Beals W S, 401 9th.

Bean A S, 1512 15th.

Beckman Julia, 1225 I.

Bishop Lucille, 1205 V.

Bowles Mrs S E, 2809 H.

Brome Mrs Elvira, 1012 10th.

Buell L M, 2721 G.

Carlisle Mrs S E, 919½ I.

Carpenter Mrs Jeannette, 716 8th.

Channel Mrs S E, 108½ Slater's Addn.

Christopher Mrs E A, 1219 18th.

Cole James, 628 I.

Cooley Charles, 830 M.

Coyan Mrs Mary, 2708 T.

Dellas Ethel, 1610 9th.

Dolan Mrs E M, 2415 F.

Ferguson B L, 2021 I.

Friedrich Mrs Mary, 620 O.

Gilmore Mrs C H, 1229 I.

Greene E C, 1904 O.

Griggs M E, 1415½ 9th.

Hegel H M, 911 O.

Helm Clara, 1506 25th.

Hippeli Eleanore, 1512 17th.

Hogel Mrs Anna, 2615 Stockton av.

Hook Mrs M A, 2228 H.

Johnson Martha, 816 26th.

**Automobiles**

Is your  
Auto.  
out of  
repair?

We can  
fix it.

All work  
guaran-  
teed.

Second-  
hand  
cars  
bought  
and sold.

Autos.  
stored  
and  
rented.

*Locomobile  
Agency*

**Bryte &  
Langner**

Garage and Shop  
28th & M Sts.

Both Phones

**Capital City Commercial College** G. A. Pierce, Principal

1015 TENTH STREET, SACRAMENTO, CAL.

PHONE: OAK 8887

**Furnishes Stenographers and Bookkeepers**





# HUSTON & TURNER

PHONE: MAIN 2433

EXCLUSIVE AGENTS SACRAMENTO COUNTY NORTHERN ELECTRIC RAILWAY LINES

603 J

932

SACRAMENTO CITY DIRECTORY CO'S.

**Cascade Laundry**  
1515 TWENTIETH STREET  
Telephones: Sunset Main 131; Capital 131

- Jordon Margaret, 2905 X.
- Jurgenson Mrs A M, 716 12th.
- Jurgenson M C, 716 12th.
- Keating Mary, 612 12th.
- Keber Ada, 608 M.
- Keber Clara, 608 M.
- Keefe M E, 2000 K.
- Kildow Louise, 1225 I.
- Lang Elizabeth, 1225 I.
- Looney Mrs Mabel, 2131 P.
- Lothhammer C A, 1527 P.
- Lundy Anna, 1616 11th.
- McCarthy Mrs Lola, 416 10th.
- McCarthy Mollie, 1616 11th.
- McGagin, 3518 Magnolia av.
- McGlynn Veronica, 1616a 11th.
- Molesworth H, 927 M.
- Morton W N, 916½ J.
- Munro E C, 3704 Orange av.
- Noe Mrs J C, 919 D.
- Nugent Mrs Rose, 231 Q.
- O'Brien Mrs M M, 1909 J.
- Radford E T, 2000 K.
- Rainsberry Anna, 2000 K.
- Richardson Mrs A B, 1530½ M.
- Ricketts Stella, 2000 K.
- Sage Mrs Jennie, 1621 12th.
- Shivers Mrs J H, 1614 7th.
- Smith K E, 1513 18th.
- Smith Mrs Millie, 2913 M.
- Southworth Mrs Maria, 1321 8th.
- Stevens Mrs I A, 3202 Olive av.
- Strachan A L, 1029 H.
- Todd Mrs Louise, 3200 Magnolia av.
- Watson Bessie, 2000 K.

### OCULISTS AND AURISTS.

(See also Physicians.)

- Briggs W E, 1005 K.
- Cooksley H J, 1329 P.
- Look H H, 1027 4th.
- McGovern H S, I O O F Temple.
- Swayze Ormison, I O O F Temple.

### OFFICE, BANK AND CHURCH FIXTURES.

ANDERSON W A & CO, 3311 Sacramento av. (See p 12.)

## FASHION STABLES CHAS. W. PAINE, PROPRIETOR

HACKS, COUPES AND STYLISH TURNOUTS

510-514 K Street - - - - - Phones: Sunset Vale 581; Capital 181



# EAST LAWN CEMETERY

Away from the noise and dirt of the city, but is within easy access. High and dry; commands a magnificent view of the city and surrounding country.

Lots sold on easy terms. OFFICE, 605 J STREET Perpetual care guaranteed

CLASSIFIED BUSINESS DIRECTORY

933

## OFFICE FIXTURES.

- BANTA A J, 3311 Sacramento av. (See p 12.)
- BURNETT & SONS, R bet 23d and 24th. (See p 7.)
- CONRADT EDWARD, 2916 26th. (See p 13.)
- GILSON M, 1630 R. (See p 6.)
- HARVIE N N, 2212 T. (See left side lines and p 10.)
- SAC PLANING MILL & FURNITURE CO, 6th and R. (See bottom lines and p 6.)
- VAN ZEE ANTHONY, 2707 I. (See right side lines and p 8.)

## \*OFFICE SUPPLIES.

BREUNER JOHN CO, 600-608 K.

## OIL BURNERS.

SACRAMENTO OIL & BURNER CO, 1009 10th. (See left center lines and p 16.)

## \*OIL CLOTHES AND CARPETS.

BREUNER JOHN CO, 600-608 K.

## OIL DEALERS.

Associated Oil Co, Front and O.

Cronkite O N, 221 N.

SACRAMENTO OIL CO, 800 J.

SACRAMENTO OIL & BURNER CO, 1009 10th. (See left center lines and p 16.)

Standard Oil Co, Guthrie Station.

## OPTICIANS.

(See also Jewelers.)

Beard G F, 822 K.

Biegel H G, 507 K.

Chinn-Beretta Optical Co, 526 K.

MEYER WM A, 903 K.

Noack C J, 704 K.

## \*ORCHESTRAS.

Churchill Orchestra, 424 M.

WALTER'S ORCHESTRA, 1006½ 7th. (See right top lines.)

## \*ORNAMENTAL WIRE WORKS.

SACRAMENTO WIRE WORKS, 1811 10th. (See under Wire Works.)

## OSTEOPATHS.

(See also Physicians.)

Daniels Mrs Edna, 719½ K.

Importers of Scotch and all other EASTERN GRANITES  
**CARLAW BROS.** Tenth and R Streets

# CHICKEN RANCH N. Tracy Carpenter

ALL WHITE LEGHORN STOCK

Road Rear of Race Track



Electric Power  
Perfection Press  
**Artificial Cement Stones**  
**407 J STREET, up-stairs**

934

SACRAMENTO CITY DIRECTORY CO'S

Daniels L R, 719½ K.  
Haines C A, 33 Stoll Bldg.  
Miles H F, 9 Stoll Bldg.  
Willi W A, 719½ K.

### OSTRICH FEATHERS.

California Ostrich Feather Wks, 917 K.  
Romani Mrs J C, 620 F.

### OYSTER COCKTAILS.

Husted J M, 627 O.

### \*OYSTERS.

AMERICAN FISH CO, 714 J. (See adv under Fish.)

### PACKERS AND SHIPPERS.

LEITCH DRAYAGE AND WAREHOUSE CO, 1215 Front.  
(See left bottom lines.)

McLAUGHLIN DRAYING CO, 115 K. (See left side lines.)  
MERCHANTS' SPECIAL DELIVERY AND TRANSFER  
CO, 1115 5th. (See front cover.)

### PAINT MANUFACTURERS.

SACRAMENTO PAINT WORKS, 415 15th. (See p 19.)

### \*PAINTERS—CARRIAGES.

Kinsman R T, 1024 K.

### PAINTERS—HOUSE AND SIGN.

Anderson John, 1213 4th.  
Anderson L P & Co, 919 K.  
Baker A S, rear 517 K.  
Bernard Joseph, 625 L.  
Blankenship C P, 2712 N.  
Brady E M, 3311 Sacramento av.  
Callendine L L, 2319 H.  
Carney C A, 1714 Q.  
Carraghar Wm, Oak av nr 6th.  
DIXON T K & SONS, 1321 Q. (See p 20.)  
Dodge O P, 1004 5th.  
Gidlund A C, 703 23d.  
Heringer R H, 825 D.  
Howard N F, 713 I.  
IVERSON W M, Box 47 J Street Road. (See p 19.)  
Jones G E, 1510 10th.  
Killen A A, 1006 6th.  
Kleinsorge F B, 1320 22d.

? ?

J. GARFIELD LEITCH

WALTER LEITCH

ALBERT E. LEITCH

## Leitch Drayage and Warehouse Co.

Can do your Draying and Storing as well and just as reasonable as any one in town. Spur track running right by the door.

SAVE ALL CARTAGE ON CARLOAD LOTS. BOTH PHONES. P. O. BOX No. 394. Office, 1215 Front Street



# H. P. HARDMAN LADIES' TAILOR

ROOMS 1, 2, 3 AND 4, 718 J STREET—UP STAIRS

PHONE: SUNSET MAIN 1994

CLASSIFIED BUSINESS DIRECTORY

935

Mayo J E, 1010 12th.  
 Menefee T S, 2515 Q.  
 Mott W W, 608½ I.  
**O'NEIL J T, 1712 S.** (See p 19.)  
 Parker F G, 1020 K.  
 Porter H M, 2426 F.  
**SAUNDERS JOSEPH, R F D J Street Road.** (See right  
 bottom lines and p 19.)  
 Schneider, Chappell & Jones, 1009 J.  
 Sherman A L, 3712 Magnolia av.  
 Smedberg A W, 2511 S.  
 Steffen Henry, 910 23d.  
 Storz W W, 2415 L.  
 Struck F L, 923 6th.

## PAINTS, OILS AND GLASS.

American Cash Store, 801 K.  
**BREUNER JOHN CO, 600-608 K.**  
**FITCH W C, 415 15th.** (See p 19.)  
 Fuller W P & Co, 1016 2d.  
 Krebs C H & Co, 626 J and 1108 K.  
**SACRAMENTO PAINT WORKS, 415 15th.** (See p 19.)  
 Tenbrook & Co, 719 J.  
**WATERHOUSE & LESTER CO, 709-715 J.** (See Adv un-  
 der Hardware.)

## PAPER—WHOLESALE.

Hopkins A S Co, Front cor L.  
 Phillips S M & Co, 1523 Front.

## \*PAPER—FOLDING BOXES.

**SCHMIDT LITHOGRAPH CO (S F).** (See opp p 600.)

## PAPER HANGERS.

(See also Wall Paper and Window Shades.)

Anderson John, 1213 4th.  
 Coss G L, 1019 10th.  
**DIXON T K & SONS, 1321 Q.** (See p 20.)  
**IVERSON W M, Box 47 J Street Road.** (See p 19.)  
 Kimber W M, 614½ I.  
**O'NEIL J T, 1712 S.** (See p 19.)  
**SAUNDERS JOSEPH, R F D J Street Road.** (See right  
 bottom lines and p 19.)  
 Schneider, Chappell & Jones, 1009 J.

## TELEPHONE WOOD, COAL AND HAY YARD

**T. J. DODDS** ———— **FUEL AND FEED OF ALL KINDS**

SUCCESSOR TO THEO. J. WEISEL

1801 and 1807 S STREET, SACRAMENTO, CAL.

Sunset Phone Oak 1711

**THE INTERNATIONAL PROTECTIVE ASSOCIATION (Inc.)**  
 COLLECTIONS AND COMMERCIAL REPORTS  
 PUBLISHERS OF THE COMMERCIAL DELINQUENT DEBTORS LIST, SHOWING THOSE NOT WORTHY OF CREDIT  
**ROOM 301, BRYTE BUILDING**  
**SACRAMENTO, CAL.**



Electrical Contractors  
...AND ENGINEERS FOR...  
EVERYTHING ELECTRICAL**Hall & McDonell**

1021 TENTH STREET

Phone: Vale 191

936

SACRAMENTO CITY DIRECTORY CO'S.

## PAPER RULERS.

SACRAMENTO BOOKBINDERY, 309 J.  
SILVIUS & SCHOENBACKLER, 423 J. (See p 20.)

## \*PASSENGER ELEVATORS.

OTIS ELEVATOR CO, Stockton, North Point and Beach  
Streets, San Francisco. (See front cover.)

## PASTE MANUFACTURERS.

Capra &amp; Calligori, 1401 2d.

## PATTERN MAKERS.

Home Pattern Co The, 1234 J.

## PAWNBROKERS.

Coney's Loan Office, 313 K.

Lipman &amp; Jacobs, 317 K.

UNCLE IKE'S COLLATERAL LOAN BANK, 231 K (See  
right center lines and under Loans.)ZEMANSKY'S LOAN & TRUST CO, 231 K. (See right  
center lines and under Loans.)

## PHONOGRAPHS AND TALKING MACHINES.

BREUNER JOHN CO, 600-608 K.

Columbia Phonograph Co, 823 J.

LANGLEY WM A, 1025 10th. (See left top lines.)

## PHOTO ENGRAVERS—ELECTROTYPERS.

SUTTER ENGRAVING CO, 420 J. (See opp p 657.)

## PHOTOGRAPHERS.

Baldwin J E D, 923 K.

Bushnell Foto Co, 422 K.

Chemical Portrait Co, 407 J.

Hayashi Mrs Ichi, 1114 4th.

Hodson B M, 813 K.

Hubley Grace, 39 Stoll Bldg.

Kilborn W D, 726 K.

King Clarence, 900 L.

Owens R B, 1302½ 8th.

Riggs A R, 3515 Park av.

Sloan F L, 627½ J.

Yoshida K T, 718 J.

## PHOTOGRAPHIC SUPPLIES.

Ing &amp; Allee Co The, 719 K.

**Pacific Coast Investment Co.** Ground Floor Investments  
...in Land Our Specialty...

507 J STREET



# White Rose Wheat Flakes

For Your Breakfast. Delicious!

CLASSIFIED BUSINESS DIRECTORY

937

Kimball-Upson Co, 609 K.  
Knox G E, 817 K.

## PHYSICIANS AND SURGEONS.

Atkinson F L, 203 Bryte bldg.  
Bainbridge C E, 513½ K.  
Baldwin W H, 1029 2d.  
Briggs G A, 1005 K.  
Briggs W E, Physicians' Bldg.  
Brown J S, 726½ K.  
Bulson C H, 719½ K.  
Cartwright C O, I O O F Temple.  
Catering W P, 1473 P.  
Clark C A, 1084 P.  
Cox T J, 801 I.  
Cronemiller Mary M, 815 10th.  
Culver J T, 3500 Magnolia av.  
Dillon G P, 719½ K.  
Dufficy G W, 601½ K.  
Faris C M, Physicians' Bldg.  
Fay F G, 201 Bryte Bldg.  
Fisher J H, 719½ K.  
Foreman A L, 627½ J.  
Gladding C F, 2509 J.  
Gordon Mrs J C, 1706 J.  
Hanna W J, 910½ J.  
Hart A C, I O O F Temple.  
Hartley J D, 501 K.  
Hatch F W, 824 J.  
Henderson A M, 1005 K.  
Henderson W H, 627½ J.  
Higgins A F, 719½ K.  
Hing T Wah, 725 J.  
James J W, 1005 K.  
Jones C B, 829 J.  
Kirby Clinton, County Hospital.  
Krull Frank, I O O F Temple.  
La Brie E, 1027 4th.  
Lindsay W K, 1029 2d.  
Look H H, 1027 4th.  
McGavren H S, I O O F Temple.  
McKee J A, 824 J.  
McLean D L, 904 J.  
Martin J T, I O O F Temple.  
Mealand Charles, 719½ K.  
Merrill E R, 1005 K.  
Murray C L, 727½ K.  
Nichols H L, 426½ J.

**The F. THOMAS**

Parisian Dyeing and Cleaning  
**WORKS**

Organdies and Silk Dresses, Portiers, Blankets,  
Lace Curtains, Feather Boas, Plumes and Robes.  
Phones: Capital 633 and Sunset Vale 1771

... 1012 TENTH STREET ...

**C. P. MASSEY**

1200 J STREET

**WOOD, COAL,  
COKE, BLOCKWOOD, ETC.**

Telephone: Main 38