

Sacramento City Classified Business Directory

1908

ABSTRACTS OF TITLE.

Buckley J J Co, 601 I.

Dray B L, 1005 K.

SACRAMENTO ABSTRACT & TITLE CO, 701 I. (See adv.)

H. M. LaRue, Jr.

John R. LaRue

Sacramento Abstract & Title Co.

701 I St.

Records Searched and Abstracts of Title Made

*ACADEMIES AND SCHOOLS.

(See Colleges and Schools; also miscl.)

ACCOUNTANTS.

TEMPLE H M, Public Accountant and Auditor, Correspondence invited, 602 Germania Life Bldg, St Paul, Minn.

TELEPHONE WOOD, COAL AND HAY YARD

T. J. DODDS

SUCCESSOR TO THEO. J. WEISEL

FUEL AND FEED OF ALL KINDS

1801 and 1807 S STREET, SACRAMENTO, CAL.

Sunset Phone Oak 1711

THE INTERNATIONAL PROTECTIVE ASSOCIATION (INC.)
COLLECTIONS AND— PUBLISHERS OF THE COMMERCIAL DELINQUENT DEBTORS LIST, SHOWING THOSE NOT WORTHY OF CREDIT
COMMERCIAL REPORTS
ROOM 301, BRYTE BUILDING
An organization for the protection of merchants and professional men
SACRAMENTO, CAL.

PRINTING

Book and Job and
Advertising Novelties

LARKIN & SON

307 J STREET
BOTH PHONES 324

Electrical Contractors
...AND ENGINEERS FOR...
EVERYTHING ELECTRICAL

Hall & McDonell

1021 TENTH STREET

Phone: Vale 191

840

SACRAMENTO CITY DIRECTORY CO'S.

ADDRESSING AND MAILING.

WINCHESTER MRS VERA, 1004 5th. (See left bottom lines.)

ADJUSTING COMPANIES.

Thress Adjustment Co The, 309 Bryte Bldg.

ADVERTISING AGENTS.

Morshead J W, 20 Gerbert Bldg.

***ADVERTISING NOVELTIES AND SPECIALTIES.**

LARKIN J N & SON, 307 J. (See left top lines.)

AGRICULTURAL IMPLEMENTS.

(See also Machinery.)

Baker & Hamilton, 101 J.

Bowman Carriage Co, 1109 J.

Deere John Plow Co, 221 J.

Sacramento Implement Co, 721 J.

Souney Bros, 2109 P.

Thomson-Diggs Co, 308 J.

AMMUNITION.

(See Sporting Goods.)

ANALYTICAL CHEMISTS.

(See also Chemists.)

LICHTHARDT & SON, 1800 M. (See Under Chemists.)

APIARISTS.

Hauser Casper, 1327 Y.

Meyer Irving, 3130 Magnolia av.

ARCHITECTS.

ANDERSON W A & CO, 3311 Sacramento Av. (See p 12.)

Campbell A W, 528½ J.

Herold R A, 501 Bryte Bldg.

Schardin F H, 19 Gerber Bldg.

Seadler & Hoen, Gerber Bldg 610 K.

Sellon & Hemmings, 3d floor State Capitol.

Weber John, 809 M.

ARCHITECTURAL IRON.

MARTIN G W, 1217 19th and 1007 4th. (See p 10.)

Pacific Coast Investment Co.

Ground Floor Investments

...in Land Our Specialty...

507 J STREET

White Rose Wheat Flakes

For Your Breakfast. Delicious!

CLASSIFIED BUSINESS DIRECTORY

841

*ART GOODS.

Field & Walton (Inc), 706 K.
Hinkson & McClatchy, 1021 6th.
McDOWELL & HARDING 726 K. (See right bottom lines.)

*ARTIFICIAL STONE MANUFACTURERS.

CENTRAL CALIFORNIA CEMENT CONSTRUCTION
CO, 407 J. (See left side lines and p 16.)

ARTISTS.

Curry Mrs F E, 1230 T.
Gardner L L, 923½ K.
Helms Robert, 821 8th.
Ottinat Jacob, 1007 K.

ASSAYERS.

Alexander F F, 610 I.

ASYLUMS AND HOSPITALS.

(See p 48.)

ATHLETIC GOODS.

(See Sporting Goods.)

ATTORNEYS-AT-LAW.

(See Lawyers.)

AUCTIONEERS.

BLOOMER F R M, 504½ J.

Sherburn W H, 424 J.

Simmons D J, 615 J.

AURISTS.

(See Oculists and Aurists.)

AUTOMOBILE GARAGE.

ARNOLD BROS & CO, 1309 J. (See left bottom lines and p 78.)

BRYTE & LANGNER, 2720 M. (See right side lines.)

CAPITOL MACHINE & AUTO CO, 709-711 L and 1800 R.
(See opp Page.)

RHOADES, SMITH & CO, 728-730 L. (See adv.)

The F. THOMAS Parisian Dyeing and Cleaning
WORKS
ALL GENERAL CLEANING AND DYING
... 1012 TENTH STREET ...
Organdies and Silk Dresses, Portiers, Blankets,
Lace Curtains, Feather Boas, Plumes and Robes.
phones: Capital 633 and Sunset Vale 1771

C. P. MASSEY

1200 J STREET

**WOOD, COAL,
COKE, BLOCKWOOD, ETC.**

Telephone: Main 38

N. HARVIE
 GENERAL CONTRACTOR
 AND BUILDER

SEE PAGE 10
 SACRAMENTO, CALIFORNIA
 Telephone Sunset
 2208 T STREET

842 SACRAMENTO CITY DIRECTORY CO'S.

***AUTOMOBILE RENTING.**

- ARNOLD BROS & CO, 1309 J. (See left bottom lines and p 78.)
- BRYTE & LANGNER, 2720 M. (See right side lines.)
- CAPITOL MACHINE & AUTO CO, 709-711 L and 1800 R. (See opp page.)
- RHOADES, SMITH & CO, 728-730 L. (See adv.)

***AUTOMOBILE REPAIRERS.**

- ARNOLD BROS & CO, 1309 J. (See left bottom lines and p 78.)
- BRYTE & LANGNER, 2720 M. (See right side lines.)
- CAPITOL MACHINE & AUTO CO, 709-711 L and 1800 R. (See opp page.)
- RHOADES, SMITH & CO, 728-730 L. (See adv.)

AUTOMOBILE STORAGE.

- ARNOLD BROS & CO, 1309 J. (See left bottom lines and p 78.)
- BRYTE & LANGNER, 2720 M. (See right side lines.)
- CAPITOL MACHINE & AUTO CO, 709-711 L and 1800 R. (See opp page.)
- RHOADES, SMITH & CO, 728-730 L. (See adv.)

AUTOMOBILE SUNDRIES AND SUPPLIES.

- ARNOLD BROS & CO, 1309 J. (See left bottom lines and p 78.)
- BRYTE & LANGNER, 2720 M. (See right side lines.)
- CAPITOL MACHINE & AUTO CO, 709-711 L and 1800 R. (See opp page.)
- RHOADES, SMITH & CO, 728-730 L. (See adv.)

***AUTOMOBILE AND CARRIAGE TRIMMINGS.**

- WATERHOUSE & LESTER CO, 709-715 J. (See adv under Hardware.)

AUTOMOBILES.

- ARNOLD BROS & CO, 1309 J. (See left bottom lines and p 78.)
- BRYTE & LANGNER, 2720 M. (See right side lines.)
- CAPITOL MACHINE & AUTO CO, 709-711 L and 1800 R. (See opp page.)

Tony's Restaurant and Oyster House 1021 Third St.

GEO. PETROVICH & M. ZANBELICH, PROPRIETORS

Private Rooms For Ladies ———— Open at All Hours

OFFICE AND GARAGE
Telephone: Sunset Main 644: Capital 733

MACHINE SHOP
Sunset Vale 1421

Capitol Machine and Auto Co.

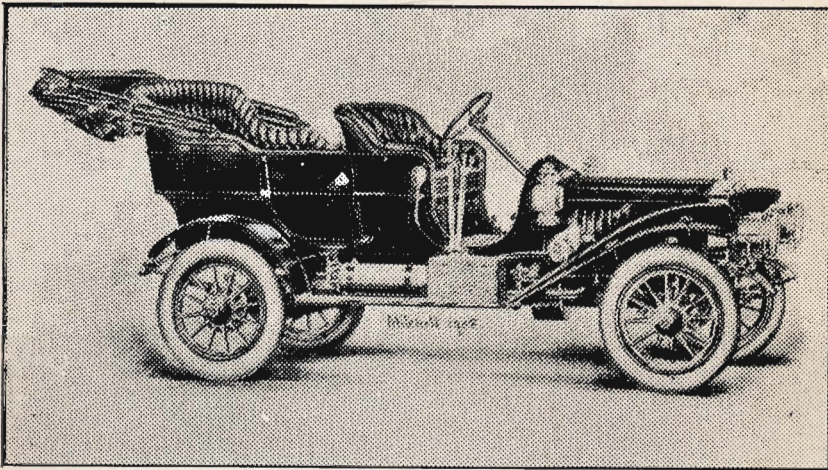
INCORPORATED

Agents for the

Mitchell, Buick and Ford

New and Second-hand Cars for Sale

Office, Salesroom and Garage, 709-711 L St., Sacramento, Cal.



OUR MACHINE SHOP at 1800 to 1816 R Street is fitted up with the latest improved appliances, and our working force consists of only expert machinists, therefore we are able to guarantee all of our work

Lubricating Oils, Gasoline and Accessories

Always on Hand at the

GARAGE

OPEN DAY and NIGHT

Special Attention to Rent Calls

If you have a tube to vulcanize send it to us.

If you have a battery to recharge send it to us.

If your spring is broken send us your order for a new one. With our new method of assembling and our improved tempering oven we cannot help but give you satisfaction. ❀ ❀

HOME DESIGNER

CLASSIFIED BUSINESS DIRECTORY 843

RHOADES, SMITH & CO, 728-730 L. (See adv.)

GEO. R. RHOADES SUNSET PHONE VALE 9676 N. C. SMITH

Rhoades, Smith & Co.
AUTO GARAGE

Dealers in Auto Supplies and Accessories,
and Second-hand Automobiles

Agents for *Rambler* and *Lambert* Automobiles

Automobile Livery All Work Guaranteed First Class 728-730 L Street

***AWNINGS AND TENTS.**

(See also Tents and Awnings.)

SUN TENT & AWNING CO, 1021 Front. (See left center lines.)

WHITE'S AWNING, TENT & BAG CO, 1216 6th. (See back cover.)

***BAD DEBT COLLECTORS.**

HENRY'S LAW & COLLECTION CO, 606 I. (See top and bottom edges.)

***BAGGAGE TRANSFER.**

McLAUGHLIN DRAYING CO, 115 K. (See left side lines.)

MERCHANTS' SPECIAL DELIVERY & TRANSFER CO, 1115 5th. (See front cover.)

***BAGS AND BURLAPS WHOLESALE.**

SUN TENT & AWNING CO, 1021 Front. (See left center lines.)

WHITE'S TENT, AWNING & BAG CO, 1216 6th. (See back cover.)

BAKERS AND CONFECTIONERS—RETAIL.

(See also Confectionary; also Cracker Mfrs.)

Ann Arbor Bakery, 1012 J.

Capital Bakery, 1236 J.

Depner Mrs R E, 3319 Sacramento av.

Gemsch Joseph, 1401 G.

Gropp Wm, 915 K.

Hasert Emil, 1236 J.

Kaeser R G, 206 4th av.

Kent M F & Sons, 1315 3d.

NAVILET BROS.
Floral Designs of Every Description Made to Order at Reasonable Prices. Country Orders Solicited
...520 K STREET...
Phones: Sunset Main 872; Capital 606

PAINT YOUR HOUSE NOW Will Do You a **FIRST-CLASS JOB**
JOS. SAUNDERS | **BOX 48, J STREET ROAD**
PHONE OAK 1176

MCLAUGHLIN DRAYING CO. INC.
SACRAMENTO, CALIFORNIA
 STABLE PHONE: MAIN 298
 115 K STREET
 TELEPHONES: SUNSET MAIN 433
 CAPITAL 701

Krieger & Hoffman, 523 K.
 Metz George, 2300 P.
 Noceti & Weitmann, 1221 J.
 O'Brien A W, 1012 J.
 Pacific Grove Bakery, 1014 9th.
 Rice Bros, 1014 9th.
 Rice J P, 911 T.
 Schnetz Henry, 124 J.
 Senn Ernest, 1531 4th.
 Squglia & Gori, 1121 3d.
 Weitman Wm, 903 U.
 Zangerle Albert, 722 J.

BALUSTERS.

BANTA A J, rear 314 10th. (See p 7.)
 BURNETT & SONS, R bet 23d and 24th. (See p 7.)
 GILSON M, 1630 R. (See p 6.)
 SAC PLANING MILL & FURNITURE CO, 6th and R.
 (See bottom lines and p 6.)

BANDS AND ORCHESTRAS.

COLLEGE ORCHESTRA, Christian Brothers College.
 Golden State Band, 1010 6th.
 Greer's Band and Orchestra, 1011 15th.
 Noack's Orchestra, 704 K.
 WALTERS' ORCHESTRA, 1006½ 7th. (See right top lines.)

BANK AND OFFICE FIXTURES.

BANTA A J, rear 314 10th. (See p 7.)
 BURNETT & SONS, R bet 23d and 24th. (See p 7.)
 CONRADT EDWARD, 2916 26th. (See p 13.)
 GILSON M, 1630 R. (See p 6.)
 HARVIE N N, 2212 T. (See left side lines and p 10.)
 SAC PLANING MILL & FURNITURE CO, 6th and R.
 (See bottom lines and p 6.)
 VAN ZEE ANTHONY, 2707 I. (See right side lines and p 8.)

BANKS AND BANKERS.

(See also Miscs.)

CALIFORNIA NATIONAL BANK, J nw cor 4th. (See back cover.)
 FORT SUTTER NATIONAL BANK THE, 7th sw cor J.
 (See inside front cover.)
 NATIONAL BANK OF D O MILLS & CO, 200 J. (See inside back cover.)
 PEOPLE'S SAVINGS BANK, 400 J. (See last page.)

VERA WINCHESTER Public Stenographer and Typewriting
 Mimeograph Copying, Notary, Etc.
 1004 Fifth Street, Sacramento - - - - - PHONES: { CAPITAL 713
 SUNSET MAIN 658

American Dry Cleaning and Dye Works

Feathers and Gloves. We Make Your Old Clothes Look Like New. Ladies'
1515 TWENTIETH STREET

We Clean and Dye Rugs,
Blankets, Lace Curtains,
Portiers, Fancy Gowns, Furs,
Work a Specialty.

PHONE M 131

CLASSIFIED BUSINESS DIRECTORY

845

BAR FIXTURES.

- BANTA A J, rear 314 10th. (See p 7.)
- BURNETT & SONS, R bet 23d and 24th. (See p 7.)
- CONRADT EDWARD, 2916 26th. (See p 13.)
- GILSON M, 1630 R. (See p 6.)
- SAC PLANING MILL & FURNITURE CO, 6th and R. (See bottom lines and p 6.)

*BARB WIRE, ETC.

- PERKINS & CO, 820 J and 1601 M. (See right top lines.)

BARBERS.

- Angelos Anthony, 923 K.
- Atkins Job, 816 J.
- Barbiere Frank, 1016 9th.
- Baron C L, 1022 8th.
- Berlinger A J, 1027 10th.
- Blakely G W, 35th bet Park and Cypress avs.
- Boone J T, 1216 J.
- Busch John, 17th nr J.
- Butler F J, 623 K.
- Chin Goon Ahk Hing, 912½ 3d.
- Clark Schuyler, 217 and 529 K.
- Cook Thomas, 1014 K.
- Costa Joseph, 829 2d.
- Dias J X, 1027 2d.
- Fancher & Johnson, 928 2d.
- Fink E M, 920 8th.
- Frederick H W, 1508 25th.
- Friedman L E, 1010 4th.
- Fritz Wm, 1128 J.
- Fukuda S H, 1106 4th.
- Gallagher & Fenton, 328 K.
- Garner F M, 1027 6th.
- Gioachino Paratore, 319 J.
- Goremes James, 825 2d.
- Gray M C, 2004½ M.
- Hall J A, 1023 4th.
- Hamatake H, 1112 3d.
- Hashimoto U, 309½ L.
- Hayes & Martin, 318½ L.
- Hoeier Alexander, 818 K.
- Hough G E, 1022 5th.
- Hunt T F, 1004 J.
- John Paul, 1116 2d.
- Julier Frank, 924 K.
- Kelly F W, 2003 O.
- Kimura M, 229 L.

A. VAN ZEE
 General Contractor
 ...AND BUILDER...
 SACRAMENTO, CAL.

2707 Eye Street
 PHONE: CAP. 619-3 BELLS

McDOWELL & HARDING

PAINTINGS
FRAMED and UNFRAMED PICTURES

ART DEALERS

726 K STREET

PICTURE FRAMING

Go To **JOSHUA HENDY IRON WORKS**

75 FREMONT STREET, - SAN FRANCISCO, CAL.

FOR ANYTHING IN MACHINERY

Poultry and Live Stock Supplies
F. F. Smith & Co.

1008 JAY STREET, SACRAMENTO

846

SACRAMENTO CITY DIRECTORY CO'S.

- .. Kuramoto K, 221½ L.
- .. Lesser Benjamin, 1104 J.
- .. Livermore C E, 3321 Magnolia av.
- .. Lockhart J A, 1227 28th.
- .. Lopez Edward, 1328 4th.
- .. Lovegren & Combs, 716 K.
- .. Martin Antone Jr, 302 K.
- .. Martin John, 1019 3d.
- .. Mikas Bill, 1116 2d.
- .. Mirikitani T, 1114 4th and 303 L.
- .. Moroni Amedeo, 1029 J.
- .. Moroni Attilio, 628 I.
- .. Nagoo T, 227½ L.
- .. Nakamura N, 1123 3d.
- .. Nicolosi L L, 2914 35th.
- .. Peel J W, 925 7th.
- .. Petit Henry, 1407 Front.
- .. Pierce W V, 1929 J.
- .. Porporato Eugene, 225 I.
- .. Price W A, 1800 I.
- .. Reeves Simon, 1431 D.
- .. Rodgers Louis, 404 J.
- .. Rose & Murphy, 307 K.
- .. Saiki U, 1213 3d.
- .. Sakamoto T, 1106 4th.
- .. Santos J S, 1006 3d.
- .. Sarrett J S, 18th se cor I.
- .. Sawyer M J, 926 J.
- .. Schroeder V F, 227 K.
- .. Silva M J, 35th cor Park av.
- .. Silva & Coty, 524 J.
- .. Silveria J S, 429 12th.
- .. Smada S, 221½ I.
- .. Suga I Co, 1106 4th.
- .. Sunata I, 1126 3d.
- .. Tong Yee Chong, 914 3d.
- .. Tong Yee Hing, 910 3d.
- .. Uyeda C, 1222 3d.
- .. Venezia John, 1204 7th.
- .. Vilaridi Ottairo, 1127 2d.
- .. Walters Peter, 1105 15th.
- .. Waters F R, 510 K.
- .. White J B, 1008 7th.
- .. Whittaker J E, 1009 8th.
- .. Williams Henry, 1624 11th.
- .. Wilson Abe, 904 K.
- .. Wixson C J, 923 2d.
- .. Zachariah Thorwald, 1307 18th.

JOHN C. LUCE

2430 TENTH STREET

Importers and Dealers in Domestic and Foreign Marble and Granite, Tombs, Tablets, Monuments, Etc.

CONSERVATORY OF MUSIC

Superior Advantages for the Study of Music in All Branches

LAURA C. WALTERS, DIRECTOR

1006½ Seventh Street, SACRAMENTO, CAL.

CLASSIFIED BUSINESS DIRECTORY

847

BARBERS' SUPPLIES.

Deckelman C & E Co, 422 J.

BARREL MANUFACTURERS.

(See Coopers.)

BASKET MANUFACTURERS.

California Mnf Co, B sw cor 12th.

Florin Basket Co, 124 K.

BATHS.

(See also Barbers.)

Crescent Hammam Baths, 708 Oak av.

DRISCOLL MRS LOTTIE 1010 8th. (See adv.)

Mrs. Lottie Driscoll

Hygienic Mineral Steam Baths

1010 Eighth St.

Hamatake H, 1112 3d.

Hammam Baths, 1126 7th.

MacMahon C M, 708 Oak av.

Whitaker F H, 807 J.

*BEER.

(See also Brewers Agents.)

"RAINIER," G A Ticoulet Agt 1420 J. (See right center lines.)

BEERS—FOREIGN AND DOMESTIC.

CAPITAL MERCANTILE CO. 1014 8th. (See left center lines.)

BELT POWER ELEVATORS.

OTIS ELEVATOR CO. Stockton, North Point and Beach sts San Francisco. (See front cover.)

WONG FONG
CHOP SUEY RESTAURANT
NATIVE CHINESE DISHES
921 AND 923 THIRD STREET

SUNSET PHONE, OAK 1546
NOODLES

WILLIE WONG
WOEY YEN LOW
CHOICE AMERICAN STYLES
SACRAMENTO, CALIFORNIA

PAPER

OF EVERY DESCRIPTION

CARRIED IN STOCK BY

BONESTELL, RICHARDSON & CO.

CALIFORNIA'S LEADING PAPER HOUSE

SAN FRANCISCO, CAL.

THE SUNDAY LEADER

Delivered to any part of the City or Oak Park at 25 cents per month

LARKIN & SON, PUBLISHERS - - - - 307 J Street

Best Advertising
Medium for

Building Materials

DAILY PACIFIC BUILDER

DELIVERED DAILY
\$1.00 PER MONTH

Main Office, 1325 Mission St., San Francisco

Prints all the
Building News

of California

248 SACRAMENTO CITY DIRECTORY CO'S.

***BICYCLE AGENTS, DEALERS AND REPAIRERS.**

LANGLEY WM A, 1025 10th. (See left top lines.)

***BICYCLE REPAIRERS.**

LANGLEY WM A, 1025 10th. (See left top lines.)

BICYCLES AND BICYCLE SUPPLIES.

Banta Mrs Laura, 825 J.

Fawcett J K, 904 J.

Gilman D M, 1009 K.

Jamison W P, 3323 Magnolia av.

Jones F M, 1015 9th.

Jordan L C, 1010 J.

Kimball-Upson Co, 609 K.

LANGLEY WM A, 1025 10th. (See left top lines.)

Nickell L W, 725 K.

Ritchie G A, 1017 9th.

Snell Cyclery, 1017 9th.

BILL POSTERS.

Caswell & Sons, rear 618 L.

BILLIARD AND POOL HALLS.

Gavdas John, 1116 2d.

McDavis & Kerson, 1125 2d.

Nishi T, 225½ L.

Okasaki T, 308 L.

Oshama & Iwatsubo, 1216 3d.

Sakamoto L G, 1022 3d.

Tsuchiya M, 219 L.

Urabi S, 312 L.

White & Glass, 1014 7th. *

Yoshida I, 1209 3d.

***BISCUIT MANUFACTURERS.**

(See Cracker Mnfrs.)

BLACKSMITHS.

(See also Horseshoers, also Carriage and Wagon Makers.)

Bennett Henry, 520 12th.

Bowman Carriage Co., 1109 J.

Brusch C H, 920 13th.

Carter E L, 3405 Sacramento av.

Cechettini Carriage Works, 1305 2d.

Childs J R, 1416 21st.

Crawford C W, 1105 J.

Elliott E E, P nr se cor 30th.

SACRAMENTO PLANING MILL & FURNITURE CO., Inc., MILL WORK

Glass, Glazing, Counters. Wood Turning, Stair Builders and Novelty Wood Work. Tels. Capital 444-3b; Sunset, Oak 4131. 6th and R Streets

Grow Ambrose, 715 S.
Isaacs Bros., rear 2708 M.
Jackson Thomas, 1112 24th.
Lightfoot & Gostick, 3326 Sacramento av.
Meehan J J, 909 12th.
Melvin H G, 418 I.
Miller & Campbell, 13th ne cor J.
Seitz & Sons, 1216 30th.
Shevlin & Stearns, 600 L and 1209 6th.
Shumate D L & Sons, 2717 Lower Stockton av.
Valenzuela & Dake, 1215 6th.
Woods J A, 715 S.

***BLACKSMITHS' AND WAGON MNFRS' TOOLS AND
MACHINES.**

**WATERHOUSE & LESTER CO, 709-715 J. (See adv under
Hardware.)**

BLANK BOOK MANUFACTURERS.

(See also Book Binders.)

**SACRAMENTO BOOK BINDERY, 309 J.
SILVIUS & SCHOENBACKLER, 423 J. (See p 20.)**

BOARDING HOUSES.

(See also Furnished Rooms.)

Cotton W E, 916 L.
Coupe Mrs Anna, 1531 D.
Craddock Ida, 1123 I.
Enkoji H, 1116 3d.
Giovannoni Antone, 120 L.
Gullion D H, 2121 Q.
Haramoto H J, 1208 2d.
Higoza The, 1222 3d.
Honda Y, 1222 3d.
Iwatate G, 209 L.
Matsiura S, 213 I.
Mikasa Japanese Boarding House, 1307-1313 3d.
Miller N A, 3606 Magnolia av.
Parker Mrs Sadie, 526 I.
Patten Mrs Bertha, 1128 10th.
Petrie Mrs Lillian, 1400 4th.
Sambo J, 309 M.
Shiramaya S, 1114 3d.
Yoshida I, 1209 3d.

Southwest
Corner
Fifth
and
J
Streets

H. A. McCLELLAND CO.
and
REAL ESTATE
and
INSURANCE

SACRAMENTO PLANING MILL & FURNITURE CO., Inc., MILL WORK
Sash, Doors, Frames, Screens, Mouldings, Etc.
Telephones, Capital 444-3b; Sunset, Oak 4131. **SIXTH and R STREETS**

Plans and Specifications Furnished.
Jobbing Promptly Attended To.
Residence: 2711 V Street; Phone Vale 9447
Office: 617 J Street; Phone Oak 9247

A. E. BILVEN BUILDER

BOARDING STABLES.

(See also Livery Stables.)

FASHION STABLES, 510-514 K. (See left bottom lines and under Livery Stables.)

BOILER MANUFACTURERS.

PHOENIX IRON & BOILER WORKS, 21st nw cor R. (See left center lines.)

BOOK BINDERS.

SACRAMENTO BOOKBINDERY, 309 J.

SILVIUS & SCHOENBACKLER, 423 J. (See p 20.)

*BOOKKEEPING SCHOOLS.

HEALD'S BUSINESS COLLEGE (S F). (See backbone and opp p 324.)

BOOKSELLERS AND STATIONERS.

Capital Book Store, 805 J.

Denison News Co, S P Depot.

Doane S A, 202 K.

Morris I F, 406 J.

Purnell W F, 723 K.

Jenne I J, 429 K.

Linthicum J F, 817 K.

Walrath L L, 805 J.

BOOT BLACKS.

Bortano & Velardi, 1016 9th.

Constans Daniel, 904 K.

Denardini G B, 1023½ 2d.

Dermeco Michael, 620 K.

Fava Adolph, 1027 10th.

Ferguson Wm, 806 K.

Foppiano Epifanio, Oak av sw cor 7th.

Galetti Peter, 1008 9th.

Gentry Wm, 817 2d.

Kostan Wm, 904 K.

Lambert J E, 221 K.

Motroni Ralph, Oak av cor 8th.

Peter Joseph, 1026 4th.

Ukena George, 905 2d.

Walker T D, 1008 7th.

BOOT AND SHOE MAKERS.

(See Shoemakers.)

ARNOLD BROS. & CO. Automobiles
1309-1311 J Street - - - - GAS ENGINE EXPERTS

When You Have Surplus Money
Let Us Offer You a Mortgage
— A SOLID SECURITY —

General Mortgage and Land Co.
PAID UP CAPITAL, \$100,000
1014 FOURTH STREET
SACRAMENTO, CAL.

CLASSIFIED BUSINESS DIRECTORY

851

BOOTS AND SHOES—RETAIL.

(See also Shoemakers.)

Braddock & De Land (Inc), 702 K.
Caselli Ansono, 527 K.
Elkus Albert, 824 K.
Greenebaum Rudolph, 612 J.
Johnson W I, 518 K.
Lavenson's (Inc), 628 K.
Litzberg N, 314 J.
Miles H E, 511 K.

BOTTLERS.

Buffalo Brew Co, 21st and Q.
Gros & Holdaway, 1731 8th.
Schnerr C & Co, 310 K.
Shasta Water Co, 802 2d.

TICOULET G A, Rainier Beer 1420 J. (See right center lines.)

BOWLING ALLEYS.

Shadinger M H, 1020 K.

BOX DEALERS.

CAPITAL BOX FACTORY, 1700 2d. (See backbone.)

BOX MANUFACTURERS.

CAPITAL BOX FACTORY, 1700 2d. (See backbone.)
California Mngf Co, B sw cor 12th.
California Pine Box & Lumber Co, Front and M.
Schmitt P N (paper), 417 J.
TOWLE BROS CO, 1700 2d. (See backbone.)

***BRACKETS—WOOD.**

BANTA A J, rear 314 10th. (See p 10.)
BURNETT & SONS, R bet 23d and 24th. (See p 7.)
GILSON M, 1630 R. (See p 6.)
SAC PLANING MILL & FURNITURE CO, 6th and R. (See bottom lines and p 6.)

BRASS FOUNDERS.

(See also Founders, Iron and Brass.)

VEACH & SNOW, 410 J. (See right center lines.)

Automobiles

Is your
Auto.
out of
repair?

We can
fix it.

All work
guaran-
teed.

Second-
hand
cars
bought
and sold.

Autos.
stored
and
rented.

*Locomobile
Agency*

**Bryte &
Langner**

Garage and Shop
28th & M Sts.
Both Phones

CAPITAL CITY COMMERCIAL COLLEGE 1015 TENTH ST., - SACRAMENTO
G. A. PIERCE, PRINCIPAL
MODERN; UP-TO-DATE
1 Year, \$75.00 6 Months, \$50.00 3 Months, \$27.50 1 Month, \$10.00 PHONE: OAK 8887



Huston & Turner REAL ESTATE

PHONE: MAIN 2433

PROPERTY OF NON-RESIDENTS HAS OUR PERSONAL ATTENTION
GENERAL INSURANCE 603 J

852

SACRAMENTO CITY DIRECTORY CO'S.

Cascade Laundry
1515 TWENTIETH STREET
Telephones: Sunset Main 131; Capital 131

*BRASS SIGNS.

VEACH & SNOW, 410 J. (See right center lines.)

BRASS AND COPPER; SHEET, ROD AND TUBE.

VEACH & SNOW, 410 J. (See right center lines.)

BREWERS.

Anheuser-Busch Brewing Assn, 1015 7th.

Buffalo Brewing Co, 21st and 22d, bet Q and R.

City Brewery, 12th ne cor H.

PABST BREWING CO, John Haub Agt, 1015 6th. (See left center lines.)

RAINIER BEER, 1420 J. (See right center lines.)

Ruhstaller Brewery, 12th ne cor H.

Sacramento Brewing Co, 12th ne cor H.

BREWERS' AGENTS.

CAPITAL MERCANTILE CO, 1014 8th. (See left center lines.)

HAUB JOHN, 1015 6th. (See left center lines.)

RAINIER BEER, 1420 J. (See right center lines.)

Saemann Carl, 1015 7th.

TICOULET G A (Rainier Beer), 1420 J. (See right center lines.)

*BRICK AND STONE CONTRS.

(See also Contrs—Brick and Stone.)

HALEY J W, 1421 10th. (See left center lines and p 14.)

HENLEY ARCHIBALD, 1721 17th. (See p 15.)

HENLEY O A & SON, 1621 13th. (See p 15.)

HERNDON G L, 914 T. (See left top lines and p 14.)

MARTIN G W, 1217 19th and 1007 4th. (See p 10.)

MURRAY GEORGE & SON, 1716 M. (See p 14.)

BRIDGE BUILDERS.

BURNS JOSEPH, 1st av near Stockton av, Curtis Oaks, Oak Park. (See p 11.)

BROKERS.

Bar A L, 915 7th.

California Fruit Exchange, 426 J.

DIKE U L INVESTMENT CO, 631 J. (See top back cover.)

Heisen A C, 624 I.

HENRY'S LAW & COLLECTION CO, 606 I. (See top and bottom edges.)

HUSTON & TURNER, 603 J. (See left top lines.)

Lubeck Morris, 204 K.

FASHION STABLES CHAS. W. PAINE, PROPRIETOR

HACKS, COUPES AND STYLISH TURNOUTS

510-514 K Street - - - - - Phones: Sunset Vale 581; Capital 181

BE WISE!!!
ASK FOR CASH CHECKS

CLASSIFIED BUSINESS DIRECTORY

853

McCLELLAND H A CO (Real Estate) 430 J. (See right side lines.)

McDowell S B, 1015 4th.

Snook J P, 1005 K.

Ziegner Moller & McBride, 33 Ochsner Bldg.

BROOM MANUFACTURERS.

Columbian Broom Factory, 520 I.

Hopkins A S Co The, Front cor L.

BUILDERS' HARDWARE.

(See Hardware.)

BUILDING BLOCKS—CEMENT.

CENTRAL CALIFORNIA CEMENT CONSTRUCTION CO, 407 J. (See left side lines and p 16.)

***BUILDING CONTRACTORS.**

(See also Contrs Bldrs.)

BLIVEN A E, 617 J. (See left side lines and p 13.)

BURNS JOSEPH, 1st Av near Stockton Av, Curtis Oaks, Oak Park. (See p 11.)

CAMPBELL J C, 119 5th Av, Oak Grove. (See p 13.)

CONRADT EDWARD, 2916 26th. (See p 13.)

FRAZER W J, Box 91½ J st rd. (See p 16.)

FUNK FRED, 2408 Carnegie av, Highland Pk. (See p 11.)

GARDNER E M, 3601 Park Av. (See p 10.)

HARVIE N N, 2212 T. (See left side lines and p 10.)

HOUSTON J G, 2705 O. (See p 8.)

MARTIN G W, 1217 19th and 1007 4th. (See p 10.)

SMITH R M, 923 6th and 2017 18th. (See p 9.)

VAN ZEE ANTHONY, 2707 I. (See right side lines and p 8.)

***BUILDING MATERIAL AND SUPPLIES.**

SMITH STERLING W CO, Bacon Block, Oakland.

BUILDING AND LOAN ASSOCIATION.

Fidelity Building & Loan Assn, 1015 8th.

Germania Building & Loan Assn, 411 J.

Provident Mutual Building & Loan Assn, 1015 8th.

Sacramento Building & Loan Assn, 412 J.

***BUSINESS COLLEGES.**

ATKINSON'S BUSINESS COLLEGE, 9th cor K.

CAPITAL CITY COMMERCIAL COLLEGE, 1015 10th.

(See right bottom lines and opp p 146.)

TENTH AND R STREETS

CONTRACTORS FOR ALL KINDS OF BUILDING STONE WORK

SACRAMENTO

CARLAW BROS.

Granite and Marble Works

WHITE LEGHORN CHICKENS

N. Tracy Carpenter

We Make a Specialty of Hatching Young Chickens From
 Our Thoroughbred Stock

Road Rear of Race Track

LOCK BOX No. 14

CARROLL & NICOL

2431 Tenth St., N. E. CORNER
TENTH AND Y
PHONE: SUNSET OAK 3232

Granite and Marble Work of All Descriptions

Monuments, Headstones, Tablets, Cemetery Inclosures,
Etc. Building Stone, Street Curb, Crosswalks, Etc.

RING UP MAIN 689

FOR BEST CEMENT STONES, TERRAZZO STEPS AND PLASTER DECORATIONS

Or Call at 407 J Street, up-stairs

854

SACRAMENTO CITY DIRECTORY CO'S.

COYNE TRADE SCHOOL, 230-240 8th, San Francisco.
HEALD'S BUSINESS COLLEGE, S F. (See backbone and
opp p 324.)

BUTCHERS.

(See Meat Markets.)

BUTCHERS' SUPPLIES.

Blair J N & Co, 115 K.

BUTTER—WHOLESALE AND RETAIL.

CREAMERIE THE, 720 J. (See left bottom lines.)

CABINET MAKERS.

(See also Furniture.)

ANDERSON W A & CO, 3311 Sacramento Av. (See p 12.)
Holt Alfred, rear 827 N.

CAFES.

Capital Cafe, 624 K.
HAUB JOHN, 1015 6th. (See left center lines.)
PEERLESS CAFE, 720 K.
Rex Cafe.

*CAMP FURNITURE.

SUN TENT & AWNING CO, 1021 Front. (See left center
lines.)
WHITE'S TENT, AWNING & BAG CO, 1216 6th. (See
back cover.)

CANDY MANUFACTURERS.

(See also Confectioners.)

Capital Candy & Cracker Co, 804 2d.
Gimbal Bros Co, 109 K.

CANNERS AND PACKERS—FRUIT.

California Fruit Canners Assn, 611 G.
Central California Canneries, es Front from P to Q.

CANOPIES.

SUN TENT & AWNING CO, 1021 Front. (See left center
lines.)
WHITE'S TENT, AWNING & BAG CO, 1216 6th. (See
back cover.)

CARPENTERS—CONTRACTORS.

(See Contractors—Carpenters.)

J. GARFIELD LEITCH

WALTER LEITCH

ALBERT E. LEITCH

Leitch Drayage and Warehouse Co. Can do your Draying and Storing as well

and just as reasonable as any one in town. Spur track running right by the door.
SAVE ALL CARTAGE ON CARLOAD LOTS. BOTH PHONES. P. O. BOX No. 394. Office, 1215 Front Street

H. P. HARDMAN LADIES' TAILOR

ROOMS 1, 2, 3 AND 4, 718 J STREET—UP STAIRS

PHONE: SUNSET MAIN 1994

CLASSIFIED BUSINESS DIRECTORY

855

CARPET CLEANERS.

GREAT WESTERN DYE WORKS, Office 1003 K; Works 818-820 R. (See back cover.)

Higbie W H, 1900 N.

Rivett's Carpet Cleaning Wks, 1237 P and 13th nw cor U.

Sacramento Compressed Air Cleaning Co, 1237 P and 13th nw cor U.

Steinmeyer H L, 909 U.

CARPETS, OIL CLOTH, ETC.

BREUNER JOHN CO, 600-608 K.

Campbell C M, 411 K.

CARRIAGE PAINTERS.

(See Painters—Carriage.)

Bowman Carriage Co, 1109 J.

Bowman H M, 522 12th.

Charleville R F, 2019 O.

*CARRIAGE TRIMMING AND TRIMMERS' SUPPLIES.

Annereau G W, 1235 J.

Bowman Carriage Co, 1109 J.

Van Voorhies A A Co, 322 J.

*CARRIAGE AND AUTOMOBILE TRIMMINGS.

WATERHOUSE & LESTER CO, 709-715 J. (See classified Hardware.)

CARRIAGE AND WAGON MNFRS AND DEALERS.

(See also Blacksmiths.)

Anderson & Keefe, 922 11th.

Bennett Henry, 520 12th.

Bowman Carriage Co, 1109 J.

Bowman H M, 522 12th.

Brown Simeon, 1100 K.

Brusch C H, 920 13th.

Cechettini Carriage Wks, 1305 2d.

Heilrath & Sons, 915 8th.

Meister A & Sons Co, 908 9th; will move to 9th sw cor D.

Studebaker Bros Co, 221 J.

Thomson-Diggs Co, 308 J.

Wackford & Fath, 417 12th.

WATERHOUSE & LESTER CO, 709-715 J. (See adv under Hardware.)

CASH CHECKS.

SACRAMENTO CASH CHECK CO, 2d floor John Breuner Co. (See right top lines.)

TELEPHONE WOOD, COAL AND HAY YARD

T. J. DODDS

SUCCESSOR TO THEO. J. WEISEL

FUEL AND FEED OF ALL KINDS

1801 and 1807 S STREET, SACRAMENTO, CAL.

Sunset Phone Oak 1711

THE INTERNATIONAL PROTECTIVE ASSOCIATION (INC.)
COMMERCIAL REPORTS AND...
COLLECTIONS OUR SPECIALTY
ROOM 301, BRYTE BUILDING
We have expert attorneys in every city in America under contract to assist us in locating debtors and collecting claims
NO COLLECTION—NO CHARGE

EVERYTHING
ELECTRICAL

HALL & McDONELL

COUNTRY ORDERS SOLICITED

1021 TENTH STREET

Phone: Vale 191

856

SACRAMENTO CITY DIRECTORY CO'S.

***CASH REGISTERS.**

Globe Register Co, 129 J.
National Cash Register Co, 706 J.

***CAT FISH—SACRAMENTO RIVER.**

AMERICAN FISH CO, 714 J. (See adv under Fish.)

***CELLAR FLOORS—CEMENT.**

CLARK E L, 804 U. (See p 16.)
TEICHERT ADOLPH, 2401 J. (See p 16.)

***CEMENT.**

(See Lime, Plaster and Cement.)

***CEMENT—CESSPOOLS.**

CENTRAL CALIFORNIA CEMENT CONSTRUCTION
CO, 407 J. (See left side lines and p 16.)

***CEMENT CONTRACTORS.**

MARTIN G W, 1217 19th and 1007 4th. (See p 10.)
TEICHERT ADOLPH, 2401 J. (See p 16.)

***CEMENT CONSTRUCTION.**

CENTRAL CALIFORNIA CEMENT CONSTRUCTION
CO; Office 407 J, Wks Wolfe Av bet J and M st rds. (See
left side lines and p 16.)

CLARK E L, 804 U. (See p 11.)
MARTIN G W, 1217 19th and 1007 4th. (See p 10.)

***CEMENT—MANTLES.**

CENTRAL CALIFORNIA CEMENT CONSTRUCTION
CO, 407 J. (See left side lines and p 16.)

***CEMENT—POTTERY.**

CENTRAL CALIFORNIA CEMENT CONSTRUCTION
CO, 407 J. (See left side lines and p 16.)

***CEMETERIES.**

(See also p 46.)

EAST LAWN PARK CEMETERY, M st rd. (See right top
lines.)

***CESSPOOL AND VAULT CLEANED.**

LEWIS THOMAS, 1916 10th. (See p 4.)

Invest in Real Estate through the **Pacific Coast Investment Co.**

All our clients make money, as we handle nothing but gilt edge properties; something we would buy our-
selves if we had the money; or something we have already purchased

507 J STREET, SACRAMENTO

White Rose Wheat Flakes

For Your Breakfast. Delicious!

CLASSIFIED BUSINESS DIRECTORY

857

CESSPOOLS—CEMENT.

CENTRAL CALIFORNIA CEMENT CONSTRUCTION CO, 407 J. (See left side lines and p 16.)

*CHEESE—WHOLESALE AND RETAIL.

CREAMERIE THE, 720 J. (See left bottom lines.)

CHEMISTS—ANALYTICAL.

LICHTHARDT & SON, 1800 M. (See adv.)

CHEMISTS—MANUFACTURING.

LICHTHARDT & SON, 1800 M. (See adv.)

Lichthardt's Laboratory

Forensic Analyses, Chemical Examination of Water, Urine, Milk and Industrial Products. Examination of Foods for Adulteration. Microscopical and Bacteriological Examinations of Sputtum, Urine, Etc.

1800 M. Street, Sacramento, Cal

Sacramento Chemical Co, 114 K.
Wilson Manufacturing Co, 205 J.

CHICKEN RANCHES.

CARPENTER N TRACY, rear of Race Track. (See right bottom lines and adv.)

N. TRACY CARPENTER

✦ ✦ ✦ ✦ POULTRY RANCH ✦ ✦ ✦ ✦

Guaranteed Fresh Ranch Eggs delivered to any part of the city. Eggs for Hatching in any kind of lots. All Eggs are from Thoroughbred, Single Comb, White Leghorn Chickens. Homing and Maltese Hen Pigeons. We supply both male and female for breeding purposes. California State Fair received all prizes. Call up Sunset Grove 37. P. O. address, Lock Box No. 14

RESIDENCE AND RANCH ON ROAD REAR OF RACETRACK

C. P. MASSEY

1200 J STREET

WOOD, COAL,

COKE, BLOCKWOOD, ETC.

Telephone: Main 38

The F. THOMAS
Parisian Dyeing and Cleaning
WORKS
ALL GENERAL CLEANING AND DYEING
1012 TENTH STREET
Organdies and Silk Dresses, Portiers, Blankets, Lace Curtains, Feather Boas, Plumes and Robes.
Phones: Capital 633 and Sunset Vale 1771