

# TURLOCK

## GENERAL INFORMATION

### OFFICIALS

**CITY OF TURLOCK**  
(County of Stanislaus)  
Incorporated February 15, 1908  
General Law City. Population 6221.  
Council Meets 1st and 3d Tuesdays of Month

Mayor, E S Christoffersen  
Councilman ..... Raymond Carter  
Councilman ..... E C Utendorffer  
Councilman ..... J L Koonce  
Councilman ..... E S Christoffersen  
Councilman ..... Gilbert Moody  
Clerk ..... Forrest R Harkins  
Attorney ..... H Earl Gleason  
Police Chief ..... John J Viarengo  
Fire Chief ..... Joel Nickolausen  
Treasurer ..... Orville L Gross  
Assessor ..... Forrest R Harkins  
City Administrator Richard H Ward  
Building Inspector .. Rubert Boesch  
Recreational Dir Dana P Vaughn Jr  
Engineer ..... Richard H Ward  
Health Officer .... Dr Ralph Truitt  
Executive Officer of Disaster Council ..... E S Christoffersen  
Civilian Defense Dir G P Tarr Jr  
Finance Officer .. Forrest R Harkins

### CHURCHES

#### TURLOCK CHURCHES AND THEIR SERVICES

**ASSEMBLY OF GOD, BETHEL TEMPLE**  
3d and A Sts  
Rev Robert Carrington, pastor  
SUNDAY SERVICES  
9:45 a.m. Sunday School  
11:00 a.m. Sunday Worship  
6:30 p.m. Junior Ambassadors and Bible Study  
7:30 p.m. Preservice Ensemble  
7:45 p.m. Evangelistic Services  
Special Services  
7:45 p.m. Praise and Prayer Meeting, Tuesday  
10:00 a.m. Morning Prayer Services Tuesday and Thursday  
8:00 p.m. Men's Prayer Service  
Christ's Ambassadors

**NORTHSIDE ASSEMBLY OF GOD**  
581 Canal Dr  
Rev Lee Archer, pastor  
SUNDAY SERVICES  
9:45 a.m. Sunday School  
11:00 a.m. Sunday Worship  
7:30 p.m. Evangelistic Services  
7:30 p.m. Evangelistic Services, Wednesday  
7:30 p.m. Evangelistic Services, Friday, CA Service

SUNDAY SERVICES  
10:30 a.m. Sunday Services, Adult Bible Class  
11:00 a.m. Morning Worship and Children's Church

**EVANGELICAL FREE CHURCH**  
Lander Av at Fourth  
Rev Joy Cummings, pastor  
SUNDAY SERVICES  
9:45 a.m. Bible School  
11:00 a.m. Worship Service  
6:30 p.m. Youth Groups  
7:30 p.m. Evening Service

7:30 p.m. Bible Study Prayer Service, Wednesday

**FIRST FOURSQUARE CHURCH**  
350 Minerva St  
Rev Robert Inglis, pastor

SUNDAY SERVICES  
9:30 a.m. Sunday School  
11:00 a.m. Sunday Worship  
6:30 p.m. Crusaders and Defenders  
7:30 p.m. Evening Service  
7:30 p.m. Bible Study, Tuesday  
10:00 a.m. Prayer Meeting, Friday  
7:30 p.m. Prayer Meeting, Friday

**FULL GOSPEL TABERNACLE**  
309 South Center St  
J Arthur Johnson, pastor

SUNDAY SERVICES  
10:00 a.m. Sunday School  
11:00 a.m. Morning Worship  
7:45 p.m. Evangelistic Service

**JEHOVAH'S WITNESSES**  
472 S Broadway  
A Hartt, presiding minister  
SUNDAY SERVICES  
7:00 p.m. Bible Study  
8:00 p.m. Bible Study, Tuesday

**LUTHERAN CHURCH OF THE GOOD SHEPHERD MISSOURI SYNOD**  
Minaret and Cooper Sts  
Rev Oren Geiger, pastor

SUNDAY SERVICES  
9:45 a.m. Sunday School  
11:00 a.m. Morning Worship

**NAZARENE LUTHERAN CHURCH**  
Orange and Columbia Sts  
Rev J R Langsjeen, vice pastor  
SUNDAY SERVICES  
9:45 a.m. Sunday School  
11:00 a.m. Morning Worship

**FIRST METHODIST CHURCH**  
E Main, Berkeley and Arbor Aves  
Cecil F Wilkins, minister  
SUNDAY SERVICES  
9:45 a.m. Sunday School  
11:00 a.m. Morning Worship  
5:30 p.m. Methodist Youth Fellowship; Intermediates  
7:00 p.m. High School and Older Youth, Methodist Youth Fellowship

**FREE METHODIST CHURCH**  
N Center and Mitchell Sts  
Rev David Paul Smith, pastor  
SUNDAY SERVICES  
9:45 a.m. Sunday School  
11:00 a.m. Morning Worship  
6:45 p.m. Juniors  
7:00 p.m. Youth  
7:30 p.m. Evangelistic Service  
7:30 p.m. Prayer Service, Wed.

**CHURCH OF JESUS CHRIST OF LATTER DAY SAINTS**  
Berkeley Ave near Tuolumne  
SUNDAY SERVICES  
9:00 a.m. Priesthood Meeting  
10:30 a.m. Sunday School  
7:30 p.m. Sacrament Meeting  
8:00 p.m. Mutual, Wednesday

**RECOGNIZED CHURCH OF JESUS CHRIST OF LATTER DAY SAINTS**  
5th and Linwood  
Elder Victor Bates, pastor  
SUNDAY SERVICES  
9:45 a.m. Sunday School  
11:00 a.m. Morning Worship  
7:00 p.m. Evening Classes

8:00 p.m. Prayer and Fellowship Services

**CHURCH OF NAZARENE**  
701 High St  
A C Augsbury, pastor  
SUNDAY SERVICES

9:45 a.m. Sunday School  
11:00 a.m. Morning Worship  
6:45 p.m. Young People's Service  
7:30 p.m. Mid-week Prayer Service, Wednesday

**PENTECOSTAL CHURCH OF GOD**  
113 I St  
Rev Henry R Shell, pastor

SUNDAY SERVICES  
10:00 a.m. Bible School  
11:00 a.m. Morning Worship  
7:30 p.m. Evangelistic Service, Wednesday  
7:30 p.m. Young People's Service Saturday

**FIRST PRESBYTERIAN CHURCH**  
Crane and Palm Sts  
Dr John M Peffers, pastor  
SUNDAY SERVICES

9:30 a.m. Sunday School  
11:00 a.m. Morning Worship  
5:30 p.m. Presbytots  
7:00 p.m. Presbyterians  
7:00 p.m. Bible Study, Thursday

**ST JOHN'S ASSYRIAN PRESBYTERIAN CHURCH**  
Minaret and Race Sts  
Rev Stephen O Khoobyar, pastor  
SUNDAY SERVICES  
9:45 a.m. Sunday School  
11:00 a.m. Morning Worship  
11:00 a.m. Children's Church

**SEVENTH DAY ADVENTIST CH**  
308 Columbia Sts  
Douglas Marchus, pastor  
SATURDAY SERVICES  
9:30 a.m. Bible School  
11:00 a.m. Sermon

**BAPTIST BROADWAY BAPTIST CHURCH**  
Broadway and A Sts  
Rev S J Quarries, pastor  
SUNDAY SERVICES

9:45 a.m. Sunday School  
11:00 a.m. Sunday Worship  
7:00 p.m. Baptist Training Union  
8:00 p.m. Evening Preaching Service  
8:00 p.m. Prayer Meeting, Wed.

**CALVARY BAPTIST CHURCH**  
Locust and Columbia Sts  
Rev Axel A Anderson, pastor  
SUNDAY SERVICES

9:45 a.m. Sunday School  
11:00 a.m. Sunday Worship  
Beginner's Children's Churches and nursery for babies at same hour  
6:00 p.m. Young Peoples meetings  
7:30 p.m. Evening service  
7:30 p.m. Prayer and Praise, Thurs  
Junior High and Senior Youth groups meet at the same hour for a Bible study

**FIRST BAPTIST CHURCH**  
297 W Main St  
Rev James W Roberts, Jr, pastor  
SUNDAY SERVICES  
9:45 a.m. Sunday School  
11:00 a.m. Sunday Worship  
6:30 p.m. Youth fellowship  
7:30 p.m. Evening Service

**FIRST MISSIONARY BAPTIST CHURCH**

Meeting place, north end of Seventh Day Adventist Church building, west side entrance  
Dr C E Hunt, pastor  
SUNDAY SERVICES  
10:00 a.m. Bible School  
11:00 a.m. Preaching  
6:00 p.m. Evening Service

**FREE WILL BAPTIST CHURCH**  
Lander and C Sts  
Earl Jensen, pastor  
SUNDAY SERVICES

9:45 a.m. Sunday School  
11:00 a.m. Sunday Worship  
6:45 p.m. JMS  
7:00 p.m. Evening Evangelistic Services  
7:00 p.m. Mid-week Prayer Service, Wednesday

**THE WEST AVENUE BAPTIST (Southern Baptist)**

West Av and Angelus Sts  
Rev LaVerne Inzer, pastor  
SUNDAY SERVICES  
9:45 a.m. Sunday School  
11:00 a.m. Sunday Worship  
6:30 p.m. Training Union  
7:30 p.m. Evening Worship  
7:00 p.m. Family night, Tuesday  
7:00 p.m. Prayer Service, Wed.

**CATHOLIC HOLY APOSTOLIC and CATHOLIC CHURCH OF EAST and ASSYRIANS**

Olive St and Canal Dr  
Rev Eshai S Joseph  
SUNDAY SERVICES  
9:45 a.m. Sunday School  
11:00 a.m. Sunday Worship  
7:00 p.m. Evening Services  
7:00 p.m. Evening Services, Wed.  
7:00 p.m. Evening Services, Friday

**SACRED HEART CHURCH**  
Lyons Av

Rev Father James McElligott, pastor  
SUNDAY SERVICES  
7:00 a.m. Mass  
8:00 a.m. Mass  
10:30 a.m. Mass  
11:30 a.m. Mass

**CHRISTIAN THE FIRST CHRISTIAN CHURCH**

Crane and Denair Sts  
Rev Primus Bennett, pastor  
SUNDAY SERVICES  
9:45 a.m. Sunday School  
11:00 a.m. Sunday Worship  
7:30 p.m. Evening Worship  
7:30 p.m. Christian Youth Fellowship

**CHRISTIAN SCIENCE FIRST CHURCH OF CHRIST SCIENTIST**

Columbia and Laurel Sts  
SUNDAY SERVICES  
9:30 a.m. Sunday School  
11:00 a.m. Lesson Sermon  
8:00 p.m. Testimonial meeting, Wednesday

**CHURCH OF CHRIST CHURCH OF CHRIST**

627 Canal Dr  
Earl Packwood Jr, minister  
SUNDAY SERVICES  
10:00 a.m. Bible Study  
10:50 a.m. Morning Worship and Communion  
6:30 p.m. Training Class  
7:30 p.m. Evening Services

(Continued Page 296)

# Benson & Zimmerman

STANISLAUS COUNTY'S OLDEST AND LARGEST  
**PARTS & EQUIPMENT DISTRIBUTORS**  
COMPLETE WITH ALL WELDING & BODY SHOP MATERIALS



☆ INDUSTRIAL & MEDICAL OXYGEN ☆  
COMPLETE SERVICE STATION & GARAGE EQUIPMENT

MAIN STORE:  
**MODESTO**

11th & H Sts LA 4-3131

**OAKDALE**

217 N. Third Ave.  
6481

**TURLOCK**

124 N. First St.  
ME 4-4966

**PATTERSON**

215 El Circulo  
TY 2-2421

**THE  
MODESTO TRIBUNE  
AND THE  
MODESTO SHOPPING GUIDE  
PUBLISHERS  
OF THE  
STANISLAUS COUNTY  
BUSINESS DIRECTORY  
AS A PUBLIC SERVICE**



**OFFICES AND PRINTING PLANT  
AT**

**910 12TH ST.**

**MODESTO**

**Lambert 3-8378**

**CHURCH OF CHRIST**  
Eagles Hall, 114 N Center St  
**SUNDAY SERVICES**  
10:30 a.m. Worship  
**EASTSIDE CHURCH OF CHRIST**  
Canal Dr and Denair Av  
**SUNDAY SERVICES**  
9:45 a.m. Sunday School  
11:00 a.m. Lord's Supper and Bible preaching  
6:30 p.m. Young People's Meeting  
7:45 p.m. Evening Evangelistic Service  
7:45 p.m. Mid-week Prayer Meeting, Wednesday

**CHURCH OF GOD**  
**FIRST CHURCH OF GOD**  
857 W Main St  
Rev Paul Cassle, pastor  
**SUNDAY SERVICES**  
9:45 a.m. Bible School  
10:50 a.m. Worship  
7:45 p.m. Evening Service  
7:45 p.m. Bible Study, Wednesday  
7:00 p.m. Youth Fellowship Meeting, Thursday  
**COMMUNITY CHURCH**  
**THE MITCHELL COMMUNITY**  
Mitchell Rd and Linwood Av  
West of Turlock—ME 4-7139  
Rev Vern Gomez, pastor  
**SUNDAY SERVICES**  
10:00 a.m. Sunday School  
11:00 a.m. Morning Worship  
8:00 p.m. Evening Service  
8:00 p.m. Family Night, Wednesday

**COVENANT**  
**BEULAH COVENANT CHURCH**  
Laurel and High Sts  
Gordon Fredeen, pastor  
**SUNDAY SERVICES**  
9:45 a.m. Sunday School  
11:00 a.m. Sunday Worship  
11:00 a.m. Four graded services for children under age 13.  
8:00 p.m. Evening Gospel Service  
8:00 p.m. Midweek Service, Wed.  
**EPISCOPAL**  
**SAINT FRANCIS EPISCOPAL CH**  
Pioneer and East Main Sts  
Rev James P Trotter, pastor  
**SUNDAY SERVICES**  
8:00 a.m. Sunday Service  
9:15 a.m. Sunday Service  
11:00 a.m. Sunday School  
Weekday Services as announced  
**EVANGELICAL**  
**THE ASSYRIAN EVANGELICAL CH**  
Palm and Washington Sts  
Rev A B Badal, pastor

**ORGANIZATIONS  
AND  
CLUBS**

**AMERICAN LEGION POST REX ISH 88**  
**BOY SCOUTS**  
**BUSINESS & PROFESSIONAL WOMEN'S CLUB**  
**CHRISTIAN BUSINESS MEN'S COMMITTEE**  
**GIRL SCOUT ORGANIZATIONS**  
**IOOF LODGE**  
**JR CHAMBER OF COMMERCE**  
**KNIGHTS OF COLUMBUS**  
**KNIGHTS OF PYTHIAS**  
**LIONS CLUB OF TURLOCK**  
**NATIVE DAUGHTERS OF THE GOLDEN WEST**  
**OES WISTERIA CHAPTER**  
**PEO SISTERHOOD**  
**PANSY REBEKAH LODGE NO 230**  
**PYTHIAN SISTERS**  
**SOROPTIMISTS CLUB**  
**TURLOCK BUSINESS GIRLS**

**TURLOCK EXCHANGE CLUB**  
**TURLOCK GARDEN CLUB**  
**TURLOCK HORSEMEN'S CLUB**  
**TURLOCK MASONIC LODGE**  
**TURLOCK MINISTERIAL UNION**  
**TURLOCK ROTARY CLUB**  
**TURLOCK SPORTSMEN'S CLUB**  
**TURLOCK 20 ANDS**  
**TURLOCK VFW POST NO 5059**  
**1210 LIONS CLUB**  
**20-30 CLUB**  
**VENTURA CLUB OF TURLOCK**

**TURLOCK  
STREET GUIDE**

**TURLOCK ST GUIDE . . . . .**  
**FIRST ST, N**  
Begins at W Olive St running N. Intersected by Florence St, Flower St, Orchard St, Julian St; ends at Canal Dr.  
**FIRST ST, S**  
Begins at W Olive St running S. Intersected by E Main St, A St, B St, C St, D St, E St, G St, H St, I St, ends at US 99 Highway.  
**THIRD ST**  
Begins at W Main St, running E, then SE. Intersected by A St, B St, S St; ends at D St.  
**FOURTH ST**  
Begins at Lander Av, running SE. Intersected by A St, ends at B St, begins again at C St, ends at D St.  
**FIFTH ST**  
Begins at Lander Av, running SE. Intersected by B St, C St, D St, F St; continues into county.  
**SIXTH ST**  
Begins at Lander Av, running SE. Intersected by C St, ends at D St.  
**SEVENTH ST**  
Begins at Lander Av, running SE. Intersected by D St, F St; continues into county.  
**EIGHTH ST**  
Begins at Lander Av at D St, running SE. Intersected by F St; continuous into county.  
**A ST**  
Begins at S First St, running SW. Intersected by S Broadway, 3rd St, 4th St; ends at Lander Av.  
**B ST**  
Begins at S First St, running SW. Intersected by S Broadway, 3rd St, 4th St; ends at Lander Av.  
**C ST**  
Begins at S First St, running SW. Intersected by S Broadway, 3rd St, 4th St, 5th St, 6th St; ends at Lander Av and 7th St.  
**D ST**  
Begins at S First St, running SW. Intersected by S Broadway, 3rd St, 4th St, 5th St, 6th St, 7th St; ends at Lander Av and 8th St.  
**E ST**  
Begins at S First St, running SW to dead end.  
**F ST**  
Begins at S First St, running SW. Intersected by 5th St; ends at 7th St.  
**G ST**  
Begins at S First St, running SW to dead end.  
**H ST**  
Begins at S First St, running SW to dead end.  
**I ST**  
Begins at S First St, running SW to dead end.

**9TH AV**  
Begins at E Main St, running SE. Intersected by Sierra St, Yosemite St; ends at Park Dr.  
**10TH AV**  
Begins at E Main St, running SE. Intersected by Sierra St, Yosemite St; ends at Park Dr.  
**11TH AV**  
Begins at E Main St, running SE. Intersected by Sierra St; ends at Berkeley Rd.  
**ALASKA ST**  
Begins at W Main St, running N; ends at Flower St.  
**ALFREDA ST**  
Begins at Bothun Rd, running SW. Intersected by Alpha Rd, Ross St, Minaret St; to dead end.  
**ALMOND AV**  
Begins at Geer Av, running W. Intersected by S Center St, US 99 Highway; ends at N Front St.  
**ALPHA RD**  
Begins at East Av running SE. Intersected by F St, Cottonwood St, Alfreda St; to dead end.  
**ANGELUS ST**  
Begins at Lander Av, running W. Intersected by Orange Av, Spruce Av, West Av; ends at Soderquist Rd.  
**ARBOR WY**  
Begins at Berkeley Rd. Intersected by El Paseo; ends at Johnson Rd.  
**ARCADE AV**  
Begins at East Av. Intersected by Myrtle St, Merritt St, Sycamore St, Marshall St, Cahill Av, Cooper Av, Lyons Av, Canal Dr; ends at Park Dr.  
**ARCADIA ST**  
Begins at Berkeley Rd running E. Intersected by Johnson Rd; continues into county.  
**BELL ST**  
Begins at East Av, running N. Intersected by Myrtle St, Merritt St, Sycamore St, Marshall St, Cahill Av, Cooper Av Lyons Av; ends at Canal Dr.  
**BERKELEY RD**  
Begins at East Av, running N. Intersected by Myrtle St, Merritt St, Sycamore St, Marshall St, Canal Dr, Kenneth St, El Capitan, Park Dr, Yosemite St, 11th Av, Arbor Wy, California Av, Hawkeye Av; continuous in county.  
**\* BEECH ST**  
Begins at Park St, running S. Intersected by Flower St, Florence St, W Olive St, W Main St, Columbia St; to dead end.  
**BONITA ST**  
Begins at N Minaret St, running NW. Intersected by E Olive St; ends at Canal Dr.  
**BOTHUN RD**  
Begins at East Av, running S; ends at Alfreda St.  
**BOULEVARD AV**  
Begins at Geer Av; running W. Intersected by Stanislaus St, N Center St, US 99 Hwy; ends at N Front St.  
**BROADWAY N**  
Begins at E Main St, running NW. Intersected by W Olive St, Florence St, Flower St, Park St, Orchid St, Julian St, Chestnut St, W Canal Dr; continues into county.

**BROADWAY S**  
Begins at E Main St, running SE. Intersected by W Main St, A St, B St, C St; ends at D St.  
**CAHILL AV**  
Begins at Minaret St, running E. Intersected by Rose Av, Oak St, Bell St; ends at Arcade Av.  
**CALIFORNIA AV**  
Begins at Berkeley Rd, running E; ends at Johnson Rd.  
**CANAL DR**  
Begins at Mitchell St, running E. Intersected by Bonita St, E Olive St, E Main St, Oak St, Bell St, Arcade Av; ends at Berkeley Rd.  
**CANAL DR W**  
Begins at N First St, running W. Intersected by N Broadway; ends at Soderquist Rd.  
**CASTOR ST**  
Begins at Lander Av, running W. Intersected by Locust St, Laurel St, Orange Av, Spruce Av, Farr St, West Av; continues to dead end.  
**CENTER ST N**  
Begins at East Av, running NW. Intersected by Mill St, Marshall St, Crane Av, E Main St, E Olive St, Mitchell Av, Wolfe Av, Washington Av; ends at US 99 Hwy.  
**CENTER ST, S**  
Begins at East Av, running SE. Intersected by C St, F St; then runs S then SE into county.  
**CHARLES PL**  
Begins at Wallace St, running E to Johnson Rd.  
**CHARLOTTE ST**  
Begins at Peach St, running W to Geer Av.  
**CHESTNUT ST**  
Begins at N Broadway, running SW, then W. Intersected by Grant Av; ends at Soderquist Rd.  
**CHURCH ST**  
Begins at E Main St running SE. Intersected by Crane Av; ends at Minaret St.  
**CLIFFORD AV**  
Begins at W Main St, running SW. Intersected by Flower St; ends at Park St.  
**COLORADO AV**  
Begins at 9th Av, running N into county.  
**COLUMBIA ST**  
Begins at Lander Av, running W. Intersected by Locust St, Laurel St, Orange Av, Beech St, Farr St; ends at Radio Av.  
**COOPER AV**  
Begins at Minaret St, running E. Intersected by Rose Av, Oak St, Bell St; ends at Arcade Av.  
**COTTONWOOD ST**  
Begins at Alpha Rd, running SW. Intersected by S Rose St, S Minaret; to dead end.  
**CRANE AV**  
Begins at Minaret St, running SW. Intersected by Church St, Hamilton St, Elm St, Diablo St, N Center St, S Frant St; to dead end.  
**DAVIS ST**  
Begins at W Main St, running S to High St.  
**DENAIR ST**  
Begins at Wolfe Av, running SE. Intersected by Mitchell Av, E Olive St, E Main St; ends.

- DENAIR ST N**  
Begins at Canal Dr, running N. Intersected by Rose Av; ends at Wayside Av.
- DIABLO ST**  
Begins at E Main St, running SE. Intersected by Crane Av, Marshall St, Mill St; ends at East Av.
- EAST AV**  
Begins at S Frant St, running E. Intersected by S Center St, Diablo St, Minaret St, Rose Av, Oak St, Bell St, Arcade Av, Berkeley Rd, Soderstrom Ln, Johnson Rd; continues into county.
- EDWARD ST**  
Begins at El Capitan, running S. Intersected by Kenneth St; to dead end.
- EL CAMINO**  
Begins at Johnson Rd, running E; ends at El Paseo.
- EL CAPITAN**  
Begins at Park Drive, running E. Intersected by Edward, El Paseo, La Linda; ends at Johnson Rd.
- ELM ST**  
Begins at E Main St. Intersected by Crane Av, Marshall St, Mill St; ends at Minaret St.
- EL PASEO**  
Begins at Park St, running N. Intersected by El Camino, El Capitan, Mira Flores, Linda Vista; ends at Arbor Wy.
- FARR ST**  
Begins at W Main St, running S. Intersected by Columbia St, High St; ends at Castor St.
- FIRST ST, N**  
Begins at E Main St, running NW. Intersected by W Olive St, Florence St, Flower St, Park St, Orchard St, Julian St, Chestnut St, W Canal Dr, continues into county.
- FIRST ST, S**  
Begins at E Main St, running SE. Intersected by A St, B St, C St, D St, E St, F St, G St, H St, I St; ends at 99 Hwy.
- FLORENCE ST**  
Begins at N First St, running SW, then W. Intersected by N Broadway, Lexington Av, Lauren St, Orange Av, Beech St, Grant Av; ends at West Av.
- FLOWER ST**  
Begins at N First St, running SW, then W. Intersected by N Broadway, Lexington Av, Orange Av, Beech St, Grant Av, West Av, Clifford Av, Alaska Av; ends at Soderquist Rd.
- FRONT ST, S**  
Begins at E Main St, running SE. Intersected by Crane Av, Marshall St, East Av, C St, F St, S First continues as Hwy 99.
- FRONT ST, N**  
Begins at E Main St, running NW. Intersected by Olive St, Geer Av, Blvd Av, Syracuse Av, Almond Av; ends at US 99 Hwy.
- GEER AV**  
Begins at N Front St, running N. Intersected by US 99 Hwy, Blvd Av, Charlotte St, Syracuse Av, Almond Av, Twentieth Century Dr, continues into county.
- GRANT AV**  
Begins at W Main St, running N. Intersected by W Olive St, Florence St, Flower St, Julian St; ends at Chestnut St.
- HAMILTON ST**  
Begins at E Main St, running SE. Intersected by Crane Av, Marshall St; ends at Minaret St.
- HAWKEYE AV**  
Begins at Johnson Rd, running W. Intersected by Berkeley Rd; continues to dead end.
- HIGH ST**  
Begins at Lander Av, running W. Intersected by Locust St, Laurel St, Orange Av, Spruce Av, Farr St, West Av, Radio Av; ends at Davis St.
- JOHNSON RD**  
Begins at Hawkeye Av at city limits running S. Intersected by California Av, Arbor Way, Linda Vista, Mira Flores, El Camino, Charles Pl, Marshall Rd, Arcadia St, East Av, continues into county.
- JULIAN ST**  
Begins at N First St, running SW, then W. Intersected by N Broadway, Grant Ave, ends at Soderquist Rd.
- KENNETH ST.**  
Begins at Berkeley Rd; ends at Edwards St.
- KENWOOD AV**  
Begins at Canal Dr, running N. Intersected by Rose Av, ends at Wayside Av.
- KEYSTONE AV**  
Begins at Wayside Av, running N into County.
- LA LINDA**  
Begins at El Capitan, curving S, then E, then N to El Capitan.
- LANDER AV**  
Begins at W Main St, running S. Intersected by Columbia St, High St, Castor St, Vermont Av, Angelus St, South Av; continues into county.
- LAURAL ST**  
Begins at Florence St running S. Intersected by W Olive W Main St, Columbia St, High St, Castor St; ends at Vermont Av.
- LEXINGTON AV**  
Begins at W Olive St, running NW. Intersected by Florence St, Flower St; ends at Park St.
- LINCOLN**  
Begins at Geer Av, running E. Intersected by Thor St; ends at Washington Av.
- LINDA VISTA**  
Begins at El Paseo, running E; ends at Johnson Rd.
- LOCUST ST**  
Begins at Columbia St, running S. Intersected by High St, Castor St; ends at Vermont Av.
- LYONS AV**  
Begins at E Main St, running E. Intersected by Rose Av, Oak St, Bell St; ends at Arcade Av.
- MAE ST**  
Begins at South Av, running S; ends at Parnell Av.
- MAIN ST E**  
Begins at S Front St, running NE. Intersected by N Center, Thor St, Palm St, Hamilton St, Church St, Bonita St, Rose Av, Pioneer Av, Colorado Av, 9th Av, 10th Av, 11th Av; ends at Berkeley Rd.
- MAIN ST W**  
Begins at S Broadway, running W. Intersected by Laurel St, Orange Av, Beech St, Grant Av, Farr St, West Av, Clifford Av, Radio Av, Davis St, Soderquist Rd, continues into county.
- MARSHALL RD**  
Begins at E Marshall and Berkeley Rd, running E. Intersected by Johnson Rd; continues into county.
- MARSHALL ST**  
Begins at S First St, running NE. Intersected by N Center St, Diablo St, Elm St, Hamilton St; ends at Minaret St.
- MARSHALL ST E**  
Begins at Minaret St, running E. Intersected by Rose Av, Oak St, Bell St, Arcade Av; ends at Berkeley Rd.
- MERRITT ST**  
Begins at Minaret St, running E. Intersected by Rose Av, Oak St, Bell St, Arcade Av; ends at Berkeley Rd.
- MILL ST**  
Begins at S Center St, running NE. Intersected by Diablo St, Elm St; ends at Minaret St.
- MINARET ST**  
Begins at East Av running N. Intersected by Myrtle St, Merritt St, Mill St, Sycamore St, Marshall St, Cahill Av, Crane Av, Cooper Av; ends at E Main St.
- MINARET ST S**  
Begins at East Av, running S, then SE. Intersected by C St, F St, Cottonwood St, Alfreda St, to dead end.
- MIRA FLORES**  
Begins at El Paseo, running E; ends at Johnson Rd.
- MITCHELL AV**  
Begins at N Center St, running NE. Intersected by Thor St, Palm St; ends at Denair St.
- MYRTLE ST**  
Begins at Minaret St, running E. Intersected by Rose Av, Oak St, Bell St, Arcade Av; ends at Berkeley Rd.
- OLIVE ST, E**  
Begins at N Front St, running NE. Intersected by N Center St, Thor St, Palm St, Denair St, Bonita St, ends at Canal Dr.
- OLIVE ST, W**  
Begins at N Front St running SW then W. Intersected by N 1st St, N Broadway St, Lexington Av, Lawel St, Orange Av, Beech St; ends at Grant Av.
- OLIVE AV, N**  
Begins at Canal Dr running N. Intersected by Rose Av, Wayside Av, Wakefield Rd; continues into County.
- ORANGE AV**  
Begins at Flower St running S. Intersected by W Olive St, W Main St, Columbia St, High St, Castor St, Vermont Av, Angelus St, South Av; continues into County.
- ORCHARD ST**  
Begins at N First St running SW. Intersected by N Broadway St; to dead end.
- PALM ST**  
Begins at E Main St running NW. Intersected by E Olive St, Mitchell Av, Wolfe Av; ends at Washington Av.
- PARK DR**  
Begins at E Main St running E. Intersected by Sierra St, Yosemite St, Arcade Av, then curves NE; intersected by 10th Av; ends at Berkeley Rd.
- PARK ST**  
Begins at N First St running SW then W. Intersected by N Broadway St, Lexington Av, Beach St, Grant Av, West Av, Clifford Av; continues into County.
- PARNELL AV**  
Begins at Soderquist Rd running E. Intersected by Mae St, West Av; ends at Martinez.
- PEACH ST**  
Begins at Rose Av running N; ends at Wayside Av.
- PIONEER AV**  
Begins at E Main St running N. Intersected by Wayside Av, Wakefield Rd; to dead end.
- RADIO AV**  
Begins at W Main St running S. Intersected by Columbia St; ends at High St.
- ROSE AV**  
Begins at N Olive Av running W. Intersected by Kenwood Av, Mitchell Av, N Denair St, Peach St; ends at Geer Av.
- ROSE ST**  
Begins at East Av running N. Intersected by Myrtle St, Merritt St, Sycamore St, E Marshall St, Cahill Av, Cooper Av, Lyons Av; ends at E Main St.
- ROSE ST, S**  
Begins at East Av running S then SE. Intersected by F St, Cottonwood St, Alfreda St; to dead end.
- SIERRA ST**  
Begins at Park Dr running NE. Intersected by 9th Av, 10th Av; ends at 11th Av.
- SODERQUIST RD, N**  
Begins at W Main St running N. Intersected by Flower St, Park St, Julian St, Chestnut St; continues into County.
- SODERQUIST RD, S**  
Begins at W Main St running S. Intersected by Vermont Av, Angelus St, South Av, Parnell Av; continues into County.
- SODERSTROM LN**  
Begins at East Av running S to dead end.
- SOUTH AV**  
Begins at Lander Av, running W. Intersected by Laurel St, Orange Av, Spruce Av, Martinez; Mae St, Soderquist Rd; continues into County.
- SPRUCE AV**  
Begins at High St running S. Intersected by Castor St, Vermont Av, Angelus St; ends at South Av.
- STANISLAUS ST**  
Begins at Boulevard Av running N. Intersected by Syracuse Av; to dead end.
- SYCAMORE ST**  
Begins at Minaret St running E. Intersected by Rose Av, Oak St, Bell St, Arcade Av; ends at Berkeley Rd.
- SYRACUSE AV**  
Begins at Geer Av running W. Intersected by Stanislaus St, N Center St, US Hwy 99; ends at N Front St.
- THOR ST**  
Begins at E Main St running NW. Intersected by E Olive St, Mitchell Av; ends at Wolfe Av.
- TWENTIETH CENTURY DR.**  
Begins at Geer Av running W; ends at US 99 Hwy.

**VERMONT AV**  
Begins at Lander Av running W.  
Intersected by Locust St, Laurel  
St, Orange Av, Spruce Av, West  
Av; ends at Soderquist Rd.  
**WAKEFIELD RD**  
Begins at N Olive Av running E;  
ends at Pioneer Av.  
**WALLACE ST**

Begins at Park St running S.  
Intersected by Charles Pl; con-  
tinues to dead end.  
**WASHINGTON AV**  
Begins at N Center St running NE  
then E. Intersected by Palm St;  
to dead end.  
**WAYSIDE AV**  
Begins at Pioneer Av running E.

Intersected by N Olive Av, Ken-  
wood Av, Mitchell Av, N Denair,  
Peach St; ends at Geer Av.  
**WEST AV**  
Begins at W Canal Dr running S.  
Intersected by Julian St, Park St,  
Flower St, Florence St, W Olive  
St, W Main St, Columbia St, High  
St, Castor St, Vermont Av, An-

gelus St, South Av, Parnell Av;  
continues into County.  
**WOLFE AV**  
Begins at N Center St running NE.  
Intersected by Thor St, Palm St;  
ends at Denair St.  
**YOSEMITE ST**  
Begins at Park Dr running NE.  
Intersected by 9th Av, 10th Av;  
ends at Berkeley Rd.

# TURLOCK CLASSIFIED DIRECTORY

## Turlock Used Cars

Cleanest • Sharpest • Anywhere

See Us  
For Your Auto Needs

Owned & Operated by Everett Edeal & Paul Packwood

241 E. OLIVE ST. TURLOCK ME. 4-7352

## SILVA'S BODY SHOP

BODY REPAIR - BAKED ENAMEL PAINTING  
RADIATOR REPAIR - WHEEL ALIGNING  
BRAKE SERVICE - WHEEL BALANCING  
FRAME STRAIGHTENING



Owned and Operated by Anthony Silva

510 LANDER AVE., TURLOCK ME 2-0193

### Adding Machines

McDOWELL'S  
1116 G St Modesto .LA 2-3140

### Agricultural Implements

CORNFORTH TRACTOR CO  
1302 9th St Modesto LA 2-5225  
123 N Center . . . . . ME 4-3377  
(See Display - Agricultural Page)

### Agricultural Printing Matter

McDANIEL SALES-SERVICE  
Cow Town . . . . . ME 4-3528

### Air Charter Service

FORSTER TRAVEL SERVICE  
224 N Center St . . . . ME 2-1274

### Air Compressors

BENSON & ZIMMERMAN  
124 N 1st St . . . . . ME 4-4966  
11th & H Sts Modesto LA 4-3131  
(See Pg Facing Inside Back Cover)  
I C REFRIGERATION INC  
741 S 99 Hwy Modesto LA 2-1065  
(See Display—Inside Back Cover)

### Air Compressors— Rental

BERRY & LEWIS RENTALS  
1116 McHenry Modesto LA 3-8038  
(See Display—Reverse of Dbl Truck)

### Air Conditioning & Sales & Service

DUBLIN FURNITURE & APPLIANCES  
200 E Main St . . . . . ME 2-2250  
A P FISCHER INC  
1310 9th St Modesto LA 4-6274  
(See Display—Double Truck)

### WAYNE R HAMPTON

2120 N 99 Hwy . . . . . ME 2-1123  
I C REFRIGERATION SERVICE, INC  
741 S 99 Hwy . . . . . LA 2-1065  
(See Display—Inside Back Cover)  
SAUNDER'S SHEET METAL &  
HEATING  
1st & Orchard Sts . . . . ME 4-3636  
VALLEY ASBESTOS CO  
1601 McHenry Av  
Modesto . . . . . LA 4-5188

### Air Line Ticket

#### Agencies

FORSTER TRAVEL SERVICE  
224 N Center . . . . . ME 2-1274  
WALSER TRAVEL SERVICE  
Hotel Covell Modesto .LA 3-0731

### Ambulance Service

COMMUNITY AMBULANCE SERVICE  
1614 H St Modesto .LA 3-9191  
See Display—Professional Page)

### Asphalt

WEST COAST ASPHALT SALES  
Rt 2 Bx 948 . . . . . ME 4-6877

### Asphalt Paving

JACKSON'S  
999 N 99 Hwy . . . . . ME 4-4387

### Auctioneers

JOSEPH A VASCONCELLOS  
Golf Rd . . . . . ME 2-3616  
DON WALLACE  
507 Angelus St . . . . . ME 4-5230

### Auto Accessories

CHET'S FLYING A SERVICE  
486 N 99 Hwy & Geer Rd  
. . . . . ME 2-2025  
GADDY'S SHELL & AUTO SERVICE  
412 E Main St . . . . . ME 4-4384  
NORM LARSON'S UNION SERVICE  
201 N Broadway . . . . . ME 4-3685  
LITTLE'S TEXACO SERVICE  
1302 N 99 Hwy . . . . . ME 4-7926

### Auto Body & Fender Repair

BOB ANDERSON BODY & FENDER  
SHOP  
711 Lander Av . . . . . ME 4-7286  
SILVA'S BODY SHOP  
225 S Broadway . . . . . ME 4-4635  
SILVA'S BODY SHOP  
510 Lander Av . . . . . ME 2-0143  
TOW SERVICE GARAGE  
531 Crows Landing Rd  
Modesto . . . . . LA 2-1865  
(See Display—Inside Front Cover)

### Auto Convertible Tops

TROY BUNCH The Seat Cover King  
13th & H Sts Modesto LA 4-2604  
(See Display—Backstrip)  
SHIROKOFF'S UPHOLSTERY  
1232 Lander Av . . . . . ME 4-7372

### Auto Dealers—New

CROW MOTORS  
211 S Center . . . . . ME 4-3538  
LEDUC MOTOR CO  
Broadway & A Sts . . . . ME 4-7291  
J & B MOTORS STUDEBAKER  
153 S Broadway . . . . . ME 2-3143  
ROY A GULLO AUTO SALES  
416 E Main . . . . . ME 4-5484  
JOE SASO  
520 N Center . . . . . ME 4-5593

**C K SANDEHS**  
 219 N Broadway ....ME 4-5605  
**SMITH CHEVROLET CO**  
 226 N Broadway ....ME 4-6510  
**SNIDER BUICK CO**  
 210 N Center .....ME 2-0441  
**FRANK STIERLEN DODGE &  
 PLYMOUTH**  
 221 S Center .....ME 4-1280  
**WENELL PONTIAC SALES**  
 231 S Center .....ME 4-6638

**Auto Dealers—Used**

**BI-RITE MOTORS**  
 934 N 99 Hwy ....ME 4-6491  
**CENTRAL VALLEY AUTO SALES**  
 200 N Broadway ....ME 4-6435  
**TURLOCK USED CAR SALES**  
 241 E Olive St .....ME 4-7352

**Auto Electric Service**

**HECKENDORF'S AUTO ELECTRIC  
 SERVICE**  
 281 E Olive .....ME 4-5367  
**NICK'S AUTO ELECTRIC**  
 118 Lander Av .....ME 4-3543  
**TOW SERVICE GARAGE**  
 531 Crows Landing Rd  
 Modesto .....LA 2-1865

**Auto Finishes**

**VALLEY PAINT CO**  
 1029 11th St Modesto LA 3-1809  
 (See Display—Modesto Insert)

**Auto Frame**

**Straightening**

**TOW SERVICE GARAGE**  
 531 Crows Landing Rd  
 Modesto .....LA 2-1865  
 (See Display—Inside Front Cover)  
**C H WILLIAMS & SON**  
 632 11th St Modesto LA 3-8339

**Auto Glass**

**ACME GLASS CO**  
 710 G St Modesto ....LA 3-5674  
 120 N 1st St .....ME 4-4429  
 (See Display—Reverse of Inserts)

**Auto Painting**

**BENSON & ZIMMERMAN**  
 11th & H Sts Modesto LA 4-3131  
 124 N 1st St .....ME 4-4966  
 (See Display—Pg Fcng Insd Bck Cvr)  
**SILVA'S BODY SHOP**  
 510 Lander Av .....ME 2-0193  
**TOW SERVICE GARAGE**  
 531 Crows Landing Rd  
 Modesto .....LA 2-1865  
 (See Display—Inside Front Cover)  
**C H WILLIAMS & SON**  
 631 11th St .....LA 3-8339

**Auto Parts**

**BENSON & ZIMMERMAN**  
 11th & H Sts Modesto LA 4-3131  
 (See Display—Pg Fcng Insd Bck Cvr)  
 123 N 1st St .....ME 4-4966  
**ERICKSON AUTO PARTS**  
 210 E Olive .....ME 2-1094  
**RAYKO AUTOMOTIVE SUPPLY**  
 155 Laurel St .....ME 4-7876  
**STARR'S AUTO PARTS**  
 218 N Broadway ....ME 4-5805  
**TURLOCK AUTO PARTS**  
 519 S Center St .....ME 4-4968



**Benson & Zimmerman**

Stanislaus County's Oldest & Largest

**PARTS & EQUIPMENT  
 DISTRIBUTORS**

124 N. FIRST ST., TURLOCK  
**ME 4-4966**

**NICK'S AUTO ELECTRIC**



**IGNITION • CARBURETORS  
 MAGNETOS • BATTERIES  
 COMPLETE AUTO ELECTRIC SERVICE**

• Owned & Operated by Joe Nikolauson

118 Lander Ave. • Turlock • ME 4-3543

**Auto Radiator Work**

**C H WILLIAMS & SON**  
 632 11th St Modesto LA 3-8339

**Auto Repair**

**A-1 GARAGE**  
 160 S I St .....ME 4-4567  
**FINLEY & RUNNER REPAIR SERV**  
 W Main & Wanuit Sts ME 4-6214

**TURLOCK AUTO PARTS**



**COMPLETE AUTOMOTIVE MACHINE WORK**

**Auto Parts - Tools - Auto Accessories  
 COMPLETE LINE OF MOTOR & BRAKE PARTS**

*Service Is Our Motto*

**519 S. CENTER ST. TURLOCK ME 4-4968**

**OSTROM'S GARAGE**

*All Work 100% Guaranteed*



**OSTROM'S  
 GARAGE  
 &  
 REPAIR-SHOP**

**MOTOR TUNE UP BRAKE WORK GEN. OVERHAUL**

**GENERAL OVERHAULS - TUNE-UPS  
 COMPLETE AUTOMATIC TRANSMISSION**

*Repairs . . . Expert Brake Work*

*Owned and Operated by  
 FRED OSTROM, Jr.*

**532 N. 1st St. Turlock ME 4-5604**

## ONETA'S HOME BAKERY



WE SPECIALIZE IN WEDDING AND BIRTHDAY CAKES  
FANCY PASTRIES, COOKIES, CAKES, PIES,  
BREADS AND ROLLS

*Specializing In All Type Breads*

6 A.M. TO 6 P.M.

114 W. Main St. Turlock ME 4-5343

## Casual Coiffures

*For the Most Modern Trend in Hair Stylings*



HAIR TINTING - MANICURING - PERMANENT WAVING

★...EXPERT HAIR CONDITIONING ★

*Evenings . . . If You Prefer . . . By Appointment*

**GENE GILL, Owner**

(Formerly of RICHARD'S OF MODESTO)

429 Crane Ave., Turlock ME 4-5497

## POLLY ANN BAKERY

*Visit Our Coffee & Donut Center*



BREADS - CAKES - DONUTS - COOKIES - PIES  
PASTRIES - DINNER ROLLS

OPEN: 6 A.M. to 6:15 P.M.

*ED HUTZ, Owner*

120 CENTER ST. TURLOCK ME 4-5419

### Service Stations

GADDY'S SHELL SERVICE  
412 E Main St . . . ME 4-4384  
GOLDEN WEST GARAGE  
980 S 1st St . . . . . ME 4-3144  
HANK'S GARAGE  
1190 East Av . . . . . ME 4-7721  
LITTLE'S TEXACO SERVICE  
1302 N 99 Hwy . . . ME 4-7926  
STENSON'S GARAGE  
20th Century Blvd . . ME 4-7731

### Auto Transmission Work

GADDY'S SHELL & AUTO SERVICE  
412 E Main St . . . ME 4-4384

### Auto Spring Manufacturing

C H WILLIAMS & SON  
632 11th St Modesto LA 3-8339

### Auto Tow Service

AAA EMERGENCY ROAD SERVICE  
412 E Main St . . . ME 4-4384  
TOW SERVICE GARAGE  
531 Crows Landing Rd  
Modesto . . . . . LA 2-1865  
(See Display—Inside Front Cover)

### Auto—Undercoating

GADDY'S SHELL & AUTO SERVICE  
412 E Main St . . . ME 4-4384

### Auto Upholstery

TROP BUNCH The Seat Cover King  
13th & H Sts Modesto LA 4-2604  
(See Display—Backstrip)

SHIROKOFF'S UPHOLSTERY  
1232 Lander Av . . . ME 4-7372

### Auto Washing & Polishing

CHEAT'S FLYING A SERVICE  
486 N 99 & Geer Rd . . ME 2-2025  
GADDY'S SHELLSERVICE  
412 E Main St . . . ME 4-4384  
NORM LARSON'S UNION SERVICE  
201 N Broadway . . . ME 4-3685  
McHENRY 3-MINUTE CAR WASH  
McHenry & Morris Sts  
Modesto . . . . . LA 3-7856  
SUPER SPEED AUTO LAUNDRY  
4th & H Sts Modesto LA 3-6300

### Auto Wheel Alignment

C H WILLIAMS & SON  
632 11th St Modesto . . LA 3-8339

### Auto Wrecking

GRAY & NORSEEN AUTO  
WRECKERS S 99 Hwy ME 4-3412  
TURLOCK AUTO WRECKERS  
S 99 Hwy . . . . . ME 2-3176  
WITZEL'S AUTO WRECKERS &  
GARAGE S 1st St . . . ME 2-1329

### Awnings

DON'S FLOOR COVERINGS  
128 Lander Av . . . . . ME 4-3576  
VALLEY ASBESTOS CO  
1601 McHenry Av  
Modesto . . . . . LA 4-5188

### Awnings—Aluminum

VALLEY ASBESTOS CO  
1601 McHenry Av  
Modesto . . . . . LA 4-5188



**Baby Supplies**

CRANE AVE PRESCRIPTION CENTER  
401 Crane Av ..... ME 2-3181

**Bakeries**

ONETA'S HOME BAKERY  
114 W Main St ..... ME 4-5343  
POLLY ANN BAKERY  
120 N Center St ..... ME 4-5419

**Banking**

MODESTO BUILDING & LOAN ASSN  
821 10th St Modesto .. LA 3-2648

**Banks**

FIRST WESTERN BANK & TRUST CO  
201 W Main St ..... ME 4-5887  
SECURITY STATE BANK  
134 W Main ..... ME 4-7271

**Barbecue Equipment**

CURRIERS OF MODESTO  
521 Santa Rita Av .. LA 4-0738

**Barber Shops**

HATFIELD'S BARBER SHOP  
222 W Main St ..... ME 4-3664  
LEE'S BARBER SHOP  
845 E Main St ..... ME 4-1749

**Baskets**

WIRE BASKET CO  
404 Lander Av ..... ME 4-6601

**Batteries**

BENSON & ZIMMERMAN  
11th & H St Modesto LA 4-3131  
124 N 1st St ..... ME 4-4966  
(See Display—Pg Fcng Insd Bck Cvr)  
CHET'S FLYING A SERVICE  
486 N 99 Hwy & Geer Rd  
ME 2-2025  
GADDY'S SHELL & AUTO SERVICE  
412 E Main St ..... ME 4-4384  
NORM LARSON'S ORION SERVICE  
201 N Broadway .... ME 4-3685  
LITTLE'S TEXACO SERVICE  
1302 N 99 Hwy .... ME 4-7926  
NICK'S AUTO ELECTRIC  
118 Lander Av .... ME 4-3543  
TOW SERVICE GARAGE  
531 Crows Landing Rd  
Modesto ..... LA 2-1865  
(See Display—Inside Front Cover)

**Beauty Culture**

CASUAL COIFFURES  
429 Crane Av ..... ME 4-5407

**Beauty Shops**

CASUAL COIFFURES  
429 Crane Av ..... ME 4-5407  
CHARM CENTER  
245 W Main St ..... ME 4-5687  
FASHION BEAUTY SALON  
420 E Main St ..... ME 4-4492  
FASHION'S FINEST SALON-BEAUTY  
429 McHenry Av  
Modesto ..... LA 4-1409  
MAE HAZELLE BEAUTY SHOP  
Turlock Bowl Bldg .... ME 4-6559  
IRENE'S SALON OF BEAUTY  
300 E Olive St ..... ME 2-1712  
JEWELLS BEAUTY HOUSE  
1856 Marshall ..... ME 4-7849  
MARG'S SALON OF BEAUTY  
215 E Main St ..... ME 2-0951  
MAXINE'S BEAUTY SALON  
205 Crane Av ..... ME 4-7798  
MOD-ERNE BEAUTY SHOPPE  
116 N Center ..... ME 4-3500  
TOWN & COUNTRY BEAUTY SALON  
1500 Johnson Rd .... ME 4-4613

**Bedspreads**

TROY BUNCH The Seat Cover King ..  
13th & H Sts Modesto LA 4-2604  
(See Display—Backstrip)

**Beverages**

TURLOCK BEVERAGES  
428 N 1st St ..... ME 4-5400

**Bibles**

GUSTAFSON'S GIFT STORE  
268 W Main St ..... ME 4-5354

**Blacksmiths**

CALVIN'S BLACKSMITH & MACHINE  
SHOP 409 S Front St ME 2-0009

**Blacksmithing**

C H WILLIAMS & SON  
632 11th St Modesto LA 3-8339

**Boats**

BARD'S SPORT SHOP  
111 Lander Av ..... ME 4-4543

**Books—Children's**

GUSTAFSON'S GIFT STORE  
268 W Main St ..... ME 4-5354

**Bowling Alleys**

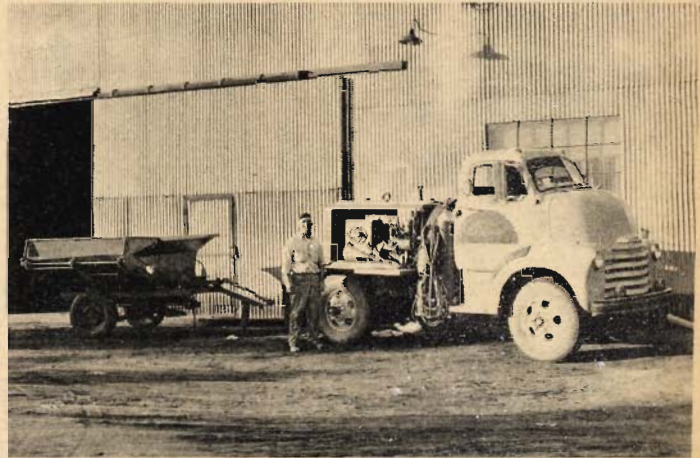
TURLOCK BOWL  
312 E Main St .... ME 4-1709

**Boxes—Wooden**

KEHN NAILING CO  
PO Bx 452 ..... ME 4-5374  
STOCKTON BOX CO  
S 99 Hwy ..... ME 4-6140

**CALVIN'S**

**Blacksmith & Machine Shop  
WELDING & MACHINE WORK**



*Manufacturers Of*

**BULK TANKS - TURKEY FEEDERS - FEED CARTS  
FEED MIXERS - SCRAPERS - WAGONS - TRAILERS - TRUCK  
MOUNTS - AUGER & CHAIN ELEVATORS - BULK TRUCKS**

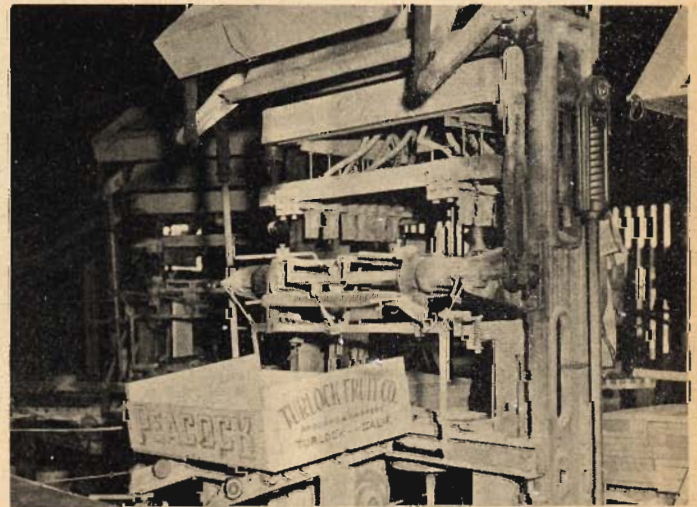
**409 S. FRONT ST. ME 2-0009**

**TURLOCK**

**34,000  
HOMES  
THROUGHOUT THE  
COUNTY  
RECEIVE IN THE  
MAIL THE  
MODESTO  
TRIBUNE  
or the  
MODESTO  
SHOPPING  
GUIDE  
EACH  
THURSDAY**

**KEHN NAILING CO.**

**Nailing - Labeling & Lidding Contractors**



**P. O. Box 452  
TURLOCK**

**Home: ME 4-6339  
Office: ME 4-5374  
Mobile: ME 4-5428**

*Represented By*  
**R. L. KEHN**

# PAUL MOORE

WHEEL ALIGNMENT & BRAKE SERVICE



Wheel Balancing • Wheel Straightening  
Drum Turning

*Power Brakes Our Specialty*

Hours: Weekdays 8 A.M. to 5 P.M. Saturday 8 A.M. to 12  
Owned and Operated by Paul Moore

401 N. Center Turlock ME 2-1267

# THE OUT O' TOWN

FOUR MILES OUT WEST MAIN  
TURLOCK, CALIF.

*Meals and Parties by Reservation Only*  
ALL FOOD SERVED HOME MADE

Mr. & Mrs Laurel Jahn

PHONE  
4-7663

## Brakes

GADDY'S SHELL & AUTO SERVICE  
412 E Main St ..... ME 4-4384  
PAUL MOORE  
401 N Center St ..... ME 2-1267  
OSTROM'S GARAGE  
532 N 1st St ..... ME 4-5604  
SILVA'S BODY SHOP  
510 Lander Av ..... ME 2-0193  
TOW SERVICE GARAGE  
531 Crows Landing Rd  
Modesto ..... LA 2-1865  
(See Display—Inside Front Cover)

## Breeders

CANDY CURTIS ARTIFICIAL  
BREEDING SERVICE  
693 Angelus ..... ME 2-0079  
VALLEY BREEDERS ..... ME 2-0464

## Broadcasting Studios

KTUR BROADCASTING STUDIO  
Quincy Rd ..... ME 2-1390

## Building Equipment

C L C CONSTRUCTION, EQUIP  
RENTAL N 99 Hwy ..ME 4-7740

## Building & Loan

### Associations

MODESTO BUILDING & LOAN ASSN  
821 10th St Modesto ..LA 3-2648

## Building Materials

VALLEY ASBESTOS CO  
1601 McHenry Av  
Modesto ..... LA 4-5188

## Bus Tickets

FORSTER TRAVEL SERVICE  
220 N Center St ....ME 2-1274

## Buses

CONTINENTAL TRAILWAYS BUS  
207 E Main St .....ME 2-3166  
GREYHOUND BUS DEPOT  
228 N Center St .....ME 4-6579

## Business Opportunity

### Brokers

HARRY CIRA0LO  
514 McHenry Av  
Modesto ..... LA 2-4050

## Butchers

ROGGER F ALLEN  
East Av ..... ME 2-0160

## Cabinets

ARTCRAFT INDUSTRIES  
548 N First St ..... ME 4-5392  
HUMPHREY'S CABINET SHOP  
1081 Lander Av ..... ME 4-7713

## Calenders

LOUIS F DOW CO  
1178 Bethany Av ....ME 4-5168

## Camping Equipment

BARD'S SPORT SHOP  
111 Lander Av ..... ME 4-4543

## Canners

SCHUCKL & CO INC  
5th & C .....ME 4-7211

## Carburetors

NICK'S AUTO ELECTRIC  
118 Lander Av .....ME 4-3543

## Carpets

DON'S FLOOR COVERING  
128 Lander Av ..... ME 4-3576

## Carpets—Cleaning & Repairing

HOUSE OF CARPETS  
920 McHenry Modesto LA 3-5664

## Carports

VALLEY ASBESTOS CO  
1601 McHenry Av  
Modesto ..... LA 4-5188

## Cattle Analysis

McDANIEL SALES & SERVICE  
Cow Town ..... ME 4-3528

## Cattle—Dairy—Sales

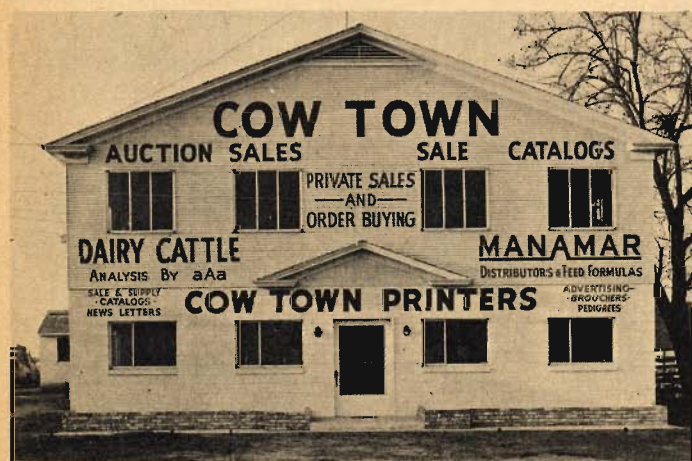
McDANIEL SALES & SERVICE  
Cow Town ..... ME 4-3528

## Chain Saws—Rentals

BERRY & LEWIS RENTALS  
1116 McHenry Av  
Modesto ..... LA 3-8038  
(See Display—Reverse of Dbl Truck)

## Chemicals

CHEMURGIC CORP  
Faith Home & Harding Rd  
..... ME 4-4951  
DRY CHEMICAL PACIFIC  
105 G St Modesto ....LA 3-8389  
STAUFFER CHEMICAL CO  
1528 Marshall ..... ME 4-5325



# COW TOWN PRINTERS

- SALE AND SUPPLY CATALOGS
- ADVERTISING BROCHURES
- BOOKLETS
- PEDIGREES
- NEWS LETTERS

McDaniel Sales - Service  
COW TOWN

2 MILES SOUTH ON HWY 99  
TURLOCK ● CALIFORNIA  
Telephone: MErcury 4-3528

## LELA'S SMART SHOP

"SEE US FOR THE SMARTEST CLOTHES IN TOWN"

*Everything for Womenswear*

USE OUR LAY-AWAY PLAN

OPEN FRIDAYS TILL 9 P.M. - 6 DAYS A WEEK 9 A.M. to 5:30 P.M.

*Owned & Operated by Lela Pierhamsil*

306 East Main St. • Turlock • ME 4-5380

### Cleaners & Dyers

CARR'S CLEANERS  
270 W Main St ..... ME 4-3581  
DU-RITE CLEANERS  
139 N Center ..... ME 4-6248  
MODERN WAY CLEANERS  
429 E Main St ..... ME 4-5528  
PETERSON CLEANERS  
127 4th St ..... ME 4-5552  
ROXY CLEANERS  
150 Bernell Av ..... ME 4-5203  
TURLOCK CLEANERS  
120 Palm ..... ME 4-6732

### Clothing—Children's

HOUSE OF TEENS  
119 S Broadway ..... ME 4-6422  
JULIA'S KIDDIE SHOP  
115 S Broadway ..... ME 4-3477  
KATHY'S  
208 E Main St ..... ME 4-3107

### Clothing—Men's

GUY & SLINGER MEN'S SHOP  
221 W Main St ..... ME 4-6233  
LUNDAHL CLOTHING CO  
100 W Main St ..... ME 4-6580  
MARTIN'S YOUNG MEN & BOYS  
225 E Main St ..... ME 4-6331  
SCHNEIDER'S MEN'S STORE  
108 W Main St ..... ME 4-3604  
TURLOCK TOGGERY  
216 E Main St ..... ME 4-4418

### Clothing—Women's

RUTH H FARMER  
117 S Center St ..... ME 4-5451  
JAY VEE STORES  
107 W Main St ..... ME 4-4206  
JEWELL DRESS SHOP  
124 N Center St ..... ME 4-6701  
LARSON'S DRESS SHOP  
120 W Main St ..... ME 4-5664  
LELA'S DRESS SHOP  
306 E Main St ..... ME 4-5380  
MARIE'S DRESS SHOP  
141 N Center St ..... ME 2-1829  
MODE-O-DAY  
105 W Main St ..... ME 4-4690  
MOSS STORES INC  
115 W Main St ..... ME 4-9804  
THE TOWN SHOP  
208 W Main St ..... ME 2-0186

### Colonics

PETER E NIKKEL  
323 Lander Av ..... ME 4-3662

### Confectioneries

HEAVENLY CANDIES  
137 N Center ..... ME 2-3415

### Concrete

TURLOCK CONCRETE PIPE CO INC  
Fulkerth Rd & N 99 Hwy  
ME 4-4931

### Contractors—Awnings

VALLEY ASBESTOS COMPANY  
1601 McHenry Av,  
Modesto ..... LA 4-5188

# TURLOCK CLEANERS



**CLEANING • MOTH-PROOFING**  
**Water-Proofing • Re-Sizing • Dye Work**  
*Knitware and Formal Finishing*

WE GIVE ORANGE THRIFTY STAMPS

**HOURS:** 7:30 - 5:30 FIVE DAYS A WEEK  
7:30 - 1:00 P. M. SATURDAYS

*Owned & Operated by A. E. TEEKELL*

120 PALM ← TURLOCK ← ME 4-6732

# Marie's Dress Shop



NORTH CENTER ST & OLIVE ST.

**COMPLETE WOMEN'S WEAR**  
**CASUAL LINE • SPORT CLOTHES**  
**DRESSES • ACCESSORIES • LINGERIE**

HOURS: 9:30 A.M. - 5:30 P.M.—6 Days a week - 9:30 A.M.—9 P.M. Fri.

*Owned & Operated by Mrs. Marie Donaldson*

141 N. Center St., TURLOCK ME 2-1829

SUPPORT

YOUR  
**DIRECTORY ADVERTISER**  
**THE BUSINESS MEN**

WHO HAVE ADVERTISED IN THIS DIRECTORY  
HAVE MADE THIS WORK POSSIBLE

PLEASE

**PATRONIZE THEM!**

**Contractors—Concrete**

LEE A CAIN  
800 Chestnut St .....ME 4-1259  
OSCAR E JERNER & SONS  
Tully Rd .....ME 4-4660  
SIMON MARKLUND  
1304 Colorado .....ME 4-3750  
DAVE PERRY CEMENT CONTR  
324 N Broadway .....ME 4-1746  
PYLE & HAYS  
Lander & August Av...ME 2-3416  
PAUL L STRICKLAND  
Mitchel Av .....ME 2-1320  
JAY TANNER  
Linwood Av .....ME 2-1214  
LLOYD W TERRELL  
1129 N Olive .....ME 4-5523

**Contractors—General**

R M CARTER  
Mercantile Bldg .....ME 4-4478  
LEONARD S JACOBSON  
325 Olive .....ME 2-1001  
KENNETH A NELSON  
1808 E Marshall St ...ME 4-3230  
DENNIS E SCRANTON  
728 S Center St .....ME 4-7761  
FRED O SEDERQUIST  
1031 Minnesota .....ME 4-5550  
J RANKIN WALLACE  
16 Soderstrom Lane ...ME 4-4349  
F J WIRTNER  
1117 Yosemite .....ME 4-6556

**Contractors—Metal**

A P FISCHER, INC  
1310 - 9th St, Modesto LA 4-6274  
(See Display - Double Truck)

**Contractors—  
Plumbing**

THORSEN'S PLUMBING &  
SHEET METAL  
134 Lander Av .....ME 2-3194

**Contractors—  
Rebuilding**

F J WIRTNER  
1117 Yosemite .....ME 4-6556

**Corset Shops**

SPENCER CORSETIERE  
201 Keystone Av .....ME 4-6582

**Cosmetics**

CRANE AVE PRESCRIPTION CENTER  
401 Crane Av .....ME 2-3181  
MERLE NORMAN COSMETICS  
116 N Center .....ME 4-3500  
OLSON'S PHARMACY  
125 N Broadway .....ME 4-1207

**Creameries**

ARMOUR CREAMERIES  
5th & D Sts .....ME 4-7263

**Crop Dusting**

ATWOOD AIR SERVICE  
Faith Home Rd .....ME 4-4118  
BOB D TURNER  
Hwy 33

**Curtains**

TROY BUNCH, BEAUTI PLEAT  
DRAPERIES  
1215 H St, Modesto....LA 2-1472

**J. RANKIN WALLACE**

**BUILDER - DEVELOPER**

*Your LOCAL Custom Builder*



**LA MESA PARK  
SUBDIVISION**

El Capitan & El Camino Sts.

*Turlock's Finest Neighborhood*

Route 4, Box 98, Soderstrom Lane, Turlock, Pa. ME 4-4349

**FREE  
ESTIMATES**

**SIMON MARKLUND**

**LICENSED  
CONTRACTOR**



**CONCRETE CONTRACTOR : GUARANTEED WORK**

CONCRETE CUTTING

ALL TYPES OF CONCRETE WORK  
NO JOB TOO LARGE OR TOO SMALL

FREE ESTIMATES

**RESIDENTIAL**

**INDUSTRIAL**

**COMMERCIAL**

*Sidewalks - Curbs - Floors - Driveways - Foundations - Gutters - Retaining Walls, Etc.*

**1304 Colorado Ave.**

**TURLOCK**

**ME 4-3750**



## FRED O. SEDERQUIST

General Building Contractor

SPECIALIZING IN FINER HOMES

P. O. Box 17—Turlock  
1031 Minnesota Rd,  
Turlock

**ME 4-5550**

## F. J. WIRTNER GENERAL CONTRACTOR

RESIDENTIAL REMODELING

RESIDENTIAL ● COMMERCIAL ● INDIVIDUAL

*Serving Turlock Area Since 1920*

1117 YOSEMITE ● TURLOCK ● ME 4-6556

### Dairies & Dairy Products

ARINDA DAIRY  
Faith Home Rd ..... ME 4-1682.  
JOHNSON DAIRY  
Berkeley Av ..... ME 4-3720  
MARKLEY'S JERSEY FARM DAIRY  
2820 Berkeley Rd,  
Rt 4, Box 3580 ..... ME 4-3464  
MENDES BROS  
Ruble Rd ..... ME 2-1483

### Dehydrators

DAUBENBERGER DEHYDRATOR  
Daubenberger Rd ..... ME 4-4703  
TURLOCK DEHYDRATING &  
PACKING CO  
5th & D Sts ..... ME 4-4697

### Dental Laboratories

HARDEN DENTAL LABORATORY  
Geer Bldg ..... ME 4-1182

### Deep Freezers

DUBLIN FURNITURE & APPLIANCES  
200 E Main St ..... ME 2-2250

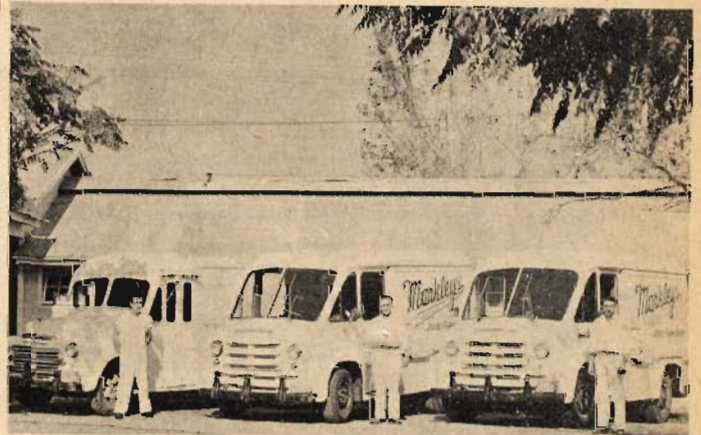
## THORSENS' PLUMBING & SHEET METAL



- PLUMBING ● HEATING
- PAYNE AIR CONDITIONING
- MYERS PUMPS
- SHEET METAL

134 LANDER AVE., TURLOCK ME 2-3194

## Markleys' JERSEY FARM DAIRY



Serving Turlock-Denair Area With Jersey  
Milk From Our Farm

For FRESH DAIRY PRODUCTS at "CASH and CARRY" PRICES  
VISIT OUR DAIRY, BERKELEY RD., TURLOCK

For Efficient - Courteous Delivery - - Phone  
**Mercury 4-3464**

# LEON HARRIS UPHOLSTERY



**BEAUTI-PLEAT Draperies**  
 Draperies Completely Hand Made  
 \* \* \*  
**INTERIOR DECORATION**

● FURNITURE & AUTO UPHOLSTERING ●

**11 Salado** PATTERSON TY 2-8551  
 ME 2-1927

# HAUCK'S PHARMACY

**DRUGS • SUNDRIES  
 PRESCRIPTIONS  
 VETERINARY SUPPLIES**

WE GIVE S&H GREEN STAMPS  
**8:30 a.m. to 6:30 pm - 6 Days A Week**  
 EVERY 6th WEEK OPEN 'TIL 9 P.M. & SUNDAY



**BROADWAY & MAIN • Turlock • ME 4-6598**

### Department Stores

- J C PENNEY CO  
139 W Main St ..... ME 4-5562
- TURLOCK MERCANTILE CO  
200 W Main St ..... ME 4-5672
- WARREN BROS STORES  
W Main & Central ..... ME 4-1537
- F W WOOLWORTH CO  
129 W Main St ..... ME 4-5336
- YOUNGDALE'S INC  
250 Market St ..... ME 4-1135

### Diabetic Needs

- CRANE AVE PRESCRIPTION CENTRE  
401 Crane Av ..... ME 2-3181

### Diesel Fuel

- GEORGE H NUNES  
Keyes Rd & 99 Hwy... ME 4-5628
- DENNIS E SCRANTON,  
SHELL OIL DIST  
728 S Center St..... ME 4-7761

### Display Cases— Refrigerated

- I C REFRIGERATION, INC  
741 S 99 Hwy, Modesto... LA 2-1065

### Doors—Shower, Sliding, Steel & Aluminum

- ACME GLASS CO  
710 G St, Modesto ... LA 3-5674  
(See Display - Reverse of Inserts)

### Doors—Folding, Plastic & Wooden

- H C MARTINEZ PLYWOOD SALES  
1001 S Center St ..... ME 4-7281
- VALLEY ASBESTOS CO  
1601 McHenry Av,  
Modesto ..... LA 4-5188

### Drainboards— Stainless Steel

- A P FISCHER, INC  
1310 - 9th St ..... LA 4-6274  
(See Display - Double Truck)

### Draperies

- TROY BUNCH,  
BEAUTI PLEAT DRAPERIES  
1215 H St, Modesto... LA 2-1472  
(See Display - Backstrip)
- DON'S FLOOR COVERING  
128 Lander Av ..... ME 4-3576
- LEON HARRIS UPHOLSTERY  
11 Salado, Patterson... TY 2-8551
- HAWLEY'S UPHOLSTERY &  
DRAPERIES  
428 S 99 Hwy, Modesto LA 2-4425

### Drapery Hardware

- DON'S FLOOR COVERING  
128 Lander Av ..... ME 4-3576

### Dresses

- LELA'S DRESS SHOP  
306 E Main St ..... ME 4-5380
- MARIE'S DRESS SHOP  
141 N Center St ..... ME 2-1829

### Drive Ins

- DIANE'S DRIVE IN  
911 N 99 Hwy ..... ME 4-9932

**SUPPORT  
 YOUR  
 DIRECTORY  
 ADVERTISERS**

## Crane Ave. Prescription Centre

HYPO-ALLERGENIC  
 COSMETICS

BABY  
 SUPPLIES

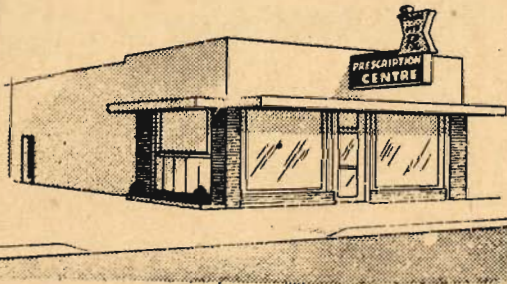
DIABETIC  
 NEEDS

LARGE FREE PARKING SPACE

*Sickroom Needs*

401 Crane Ave., Turlock

Tel: ME 2-3181



PROTECTING YOUR HEALTH ALL WAYS

# OLSON'S PHARMACY



**FREE DELIVERY**  
**PRESCRIPTIONS**  
**DRUGS**  
**COSMETICS**  
**FOUNTAIN**  
**SUNDRIES**

125 No. Broadway Turlock ME 4-1207

### Drug Stores

- BOIES DRUG STORE  
125 W Main St ..... ME 4-6710
- COAST DRUG STORE, INC  
McHenry Village,  
Modesto ..... LA 3-1723  
(See Display - Reverse of Title Page)
- CRANE AVE PRESCRIPTION CENTRE  
401 Crane Av ..... ME 2-3181
- HAUCK'S PHARMACY  
Broadway & Main Sts. .... ME 4-6598
- JOHNSON DRUG STORE  
318 E Main St ..... ME 4-1124
- OLSON'S PHARMACY  
125 N Broadway ..... ME 4-1207
- TURLOCK DRUG CO  
233 E Main St ..... ME 2-3164

### Drug Sundries

- HAUCK'S PHARMACY  
Broadway & Main Sts. .... ME 4-6598

### OLSON'S PHARMACY

125 N Broadway ..... ME 4-1207

### Dryers

- DUBLIN FURNITURE &  
APPLIANCES  
200 E Main St ..... ME 2-2250
- RADIO ELECTRONICS  
1226 H St, Modesto ..... LA 2-7678

### Eggs

- CHRISTOFFERSEN POULTRY  
6th & Lander Av ..... ME 4-4981
- MARKLEY'S JERSEY FARM DAIRY  
2820 Berkeley Rd,  
Rt 4, Box 3580 ..... ME 4-3464

### Electrical Contractors

- NEIL M KIRKES  
341 Flower St ..... ME 4-6495

# Kirkes Electrical Shop

LICENSED ELECTRICAL CONTRACTOR



**Commercial - Industrial - Residential Wiring**  
**ELECTRICAL MAINTENANCE**  
**FREE ESTIMATES**

341 Flower St., TURLOCK Phone: ME 4-6495

# H. T. Schendel Electrical Contractor



— FREE ESTIMATES —

Office: 793 COLUMBIA ST.  
 Shop: SODERQUIST ROAD

793 COLUMBIA ST.

Phone: ME 2-0068

# Mann & Sweet ELECTRIC

LICENSED ELECTRICAL CONTRACTORS

Industrial, Commercial & Residential Wiring

# Free Estimates

922 Lander Ave., Turlock Ph ME 4-3124 Res. ME 4-3484

## DON'S FLOOR COVERING

"BUILDERS OF SATISFIED CUSTOMERS"



**QUALITY AT NO EXTRA COST**

**CARPETS • LINOLEUM • TILE • WALL COVERING**

VENETIAN BLINDS - WINDOW SHADES - DRAPERIES & DRAPERY  
HARDWARE - METAL AWNINGS & TRIM - FLOOR WAXES  
& CLEANERS - FLOOR POLISHERS - PAINT

**128 LANDER AVE.**

**TURLOCK**

**ME 4-3576**

### Electrical Contractors —

MANN & SWEET ELECTRIC  
922 Lander Av .....ME 4-3124  
MOORE ELECTRIC  
142 S 1st St .....ME 4-4616  
H T SCHENDEL  
793 Columbia St .... ME 2-0068

### Electrical Maintenance

NEIL M KIRKES  
341 Flower St .....ME 4-6495  
H T SCHENDEL  
729 Columbia St ....ME 2-0068

### Electrical Service

JOE'S APPLIANCE SERVICE  
142 Bernell Av .....ME 4-7833

### Electric Appliances

RADIO ELECTRONICS  
1226 H St, Modesto...LA 2-7678

### Engineering

I C REFRIGERATION, INC  
741 S 99 Hwy Modesto LA 2-1065

### Ennz Products

DRY CHEMICAL PACIFIC  
105 G St, Modesto ....LA 3-8389

### Equipment Rentals

BERRY & LEWIS RENTALS  
1116 McHenry Av,  
Modesto .....LA 3-8038  
(See Display - Reverse of Double  
Truck)

### Farms

EWING FARMS, No. 5  
Mitchell Rd .....ME 4-7088  
FRANCIS FIORINI FARM  
Lombardy & Sycamore...ME 4-6881

PLEASANT VALLEY FARMING CO  
Vincent Rd .....ME 4-6920

### Farm Equipment

B & B MFG CO  
Golf Club Rd .....ME 2-0616  
BRIDGES & MILLER SURGE  
DAIRY FARM EQUIP  
331 N 99 Hwy .....ME 4-5361  
DUREE - OLIVER EQUIPMENT CO  
401 N Center St .....ME 4-7959  
FERNANDES IMPLEMENT CO  
214 S Center St .....ME 4-1193  
MONTEITH TRACTOR & TRUCK CO  
Broadway & Market ...ME 4-5839  
KROELLS PACKING SUPPLY &  
TOWT WIND MACHINES  
N 99 Hwy, Bx 990 ...ME 4-5424  
(See Display - Turlock Insert)

### Farm Implements—

#### Sales & Service

CORNFORTH TRACTOR CO  
1302 9th St, Modesto..LA 2-5225  
123 N Center St .....ME 4-3377  
(See Display - Agricultural Page)

### Farm Machinery Parts & Tires

CORNFORTH TRACTOR CO  
1302 9th St .....LA 2-5225  
123 N Center St .....ME 4-3377  
(See Display - Agricultural Page)

### Feed

CARLSON FEED CO  
201 S Broadway .....ME 4-6743  
CHRISTOFFERSEN POULTRY  
6th & Lander Av .....ME 4-4981  
JOHNSON'S FEED & SUPPLY CO  
Johnson Rd .....ME 4-6921  
TURLOCK FEED & FARM SUPPLY  
301 S 1st St .....ME 4-4438

# Cornforth Tractor Co.

*Serving the Farmer is Our Job!*

**COMPLETE EQUIPMENT FOR THE FARM**



**AUTHORIZED DEALERS**



Complete . . . GUARANTEED Repairs On All Farm Implements! . . .

. . . AND Pioneers Of 90-Day 100% Guaranteed Used Tractors

1302 Ninth St., Modesto  
Phone: LA 2-5225

BUD GARTON - Gen. Mgr  
W. W. CORNFORTH, Owner

123 N. Center - Turlock  
Phone : ME 4-3377



**Fiberglass**

VALLEY ASBESTOS CO  
1302 - 9th St .....LA 4-5188

**Films**

GOSPEL FILMS INC  
115 N Broadway .....ME 4-4414

**Fish**

FERREL'S FISH FARM  
Merriam Rd .....ME 4-1092  
TURLOCK FISH MARKET  
128 N 1st St .....ME 4-5613

**Fishing Bait**

BARD'S SPORT SHOP  
111 Lander Av .....ME 4-4543

**Fishing Tackle**

BARD'S SPORT SHOP  
111 Lander Av .....ME 4-4543

**Five Cents To One  
Dollar Stores**

JENSEN'S 5-10-15 CENT STORE  
340 E Main .....ME 4-4194

**Floor Covering**

HOUSE OF CARPETS  
920 Mc Henry Av,  
Modesto .....LA 3-5664  
LINOLEUM STUDIO  
119 Lander Av .....ME 4-6696

**Floor Materials**

J C MARTINEZ PLYWOOD SALES  
1001 S Center St .....ME 4-7281

**Floor Polishers**

DON'S FLOOR COVERING  
128 Lander Av .....ME 4-3576

**Floor Sanding &  
Polishing**

WILLIAM RAE  
224 Canal .....ME 4-3647

**Floor Waxes &  
Cleaners**

DON'S FLOOR COVERING  
128 Lander Av .....ME 4-3576

**Florists**

AHGO'S FLOWERS  
120 Locust .....ME 4-3786  
CALIFORNIA FLOWER & GIFT SHOP  
229 W Main St .....ME 4-1133  
JOHNSON'S HOUSE OF FLOWERS  
124 N Broadway .....ME 4-4467  
TURLOCK FLOWER SHOP  
241 W Main St .....ME 4-4332

**Foam Rubber & Foam  
Rubber Furniture**

TROY BUNCH,  
THE SEAT COVER KING  
13th & H Sts, Modesto LA 4-2604  
(See Display Back Strip)

**Foods—Frozen**

BETTENCOURT'S  
Rt 1, Box 128,  
Lander & Bradbury Rd ME 2-3265  
BRIGHT FOODS, INC  
711 F St .....ME 2-3128

**Foods—Take Out  
Orders**

L & C COFFEE SHOP  
111 W Main St .....ME 4-5023  
TOWN HOUSE CAFE  
219 S 99 Hwy .....ME 4-9959

**Formica**

ARTCRAFT INDUSTRIES  
548 N 1st St .....ME 4-5392

**Frost Protection**

KROELLS PACKING SUPPLY  
N 99 Hwy, Box 990 ..ME 4-5424  
TOWT WIND MACHINE  
(See Display - Turlock Insert)

**Frozen Food Lockers—  
Rental**

TURLOCK COLD STORAGE PLANT  
333 Lander & Caster ..ME 4-3546  
UPTOWN LOCKER SERVICE  
236 W Main St .....ME 2-0106

**Fruit Companies**

LAZAR FRUIT CO  
S Center St .....ME 4-5254  
PACIFIC FRUIT & PRODUCE CO  
N Front St .....ME 4-5831  
TURLOCK GRAPE BUYERS  
506 N Center St .....ME 4-4407

**Fruit Stands**

EDGAR'S FRUIT STAND  
541 N 99 Hwy .....ME 4-7770  
GIANT ORANGE STAND  
438 N 99 Hwy .....ME 4-5286  
ZAYA'S FRUIT STAND  
1382 N 99 Hwy .....ME 2-0122

**Fuel Storage**

DENNIS E SCRANTON,  
SHELL OIL DIST  
728 S Center St .....ME 4-7761

**Funeral Homes**

ALLEN MORTUARY  
247 N Broadway .....ME 4-5829

**Furniture**

DUBLIN FURNITURE & APPLIANCES  
200 E Main St .....ME 2-2250  
JACKSON'S  
999 N 99 Hwy .....ME 4-4387  
OSBORN & SON  
300 E Main & Center ..ME 4-3705  
RINGGENBERG HOME FURNISHINGS  
209 Lander Av .....ME 4-6362  
WOOD'S FURNITURE  
433 E Main St .....ME 4-4287

**Garages**

OSTROM'S GARAGE  
532 N 1st St .....ME 4-5604  
TOW SERVICE GARAGE  
531 Crows Landing Rd,  
Modesto .....LA 2-1865  
(See Display - Inside Front Cover)  
C H WILLIAMS & SON  
632 11th St, Modesto LA 3-8339

**Garage & Service  
Station Equipment**

BENSON & ZIMMERMAN  
11th & H Sts, Modesto LA 4-3131  
(See Display - Page Facing Inside  
Cover)

**Turlock Flower Shop**



**CUT FLOWERS — POTTED PLANTS  
PLANTERS — GIFTS — CORSAGES  
WEDDINGS — FUNERALS — BANQUETS**



**Arvid and Agnes Klint  
241 W. Main, Turlock Office: ME 4-4332  
Night: ME 4-4259**

**Dublin Furniture & Appliances  
COMPLETE HOME FURNISHINGS**



**HOFFMAN & SYLVANIA - RADIO & TELEVISION  
KELVINATOR & GIBSON - REFRIGERATORS & FREEZERS  
● AMANA DEEP FREEZE ●**

**EASY TERMS & FREE DELIVERY**

**200 E. MAIN, TURLOCK**

**ME 2-2250**

# RAY GUSTAFSON

*Lawn and Hedge Work*

**ROTOTILLING • RENOVATING**

*General Yard Maintenance*

**WE SERVE TO SATISFY**

262 Angelus St., Turlock ME 4-7764

## Garbage Collectors

TURLOCK SCAVENGER CO  
535 Wolfe .....ME 4-6514

## Garden Equipment

SMITH'S FARM & GARDEN  
709 Lander Av .....ME 4-6185

## Garden Equipment Rental

BERRY & LEWIS RENTALS  
116 McHenry, Modesto LA 3-8038  
(See Display - Reverse of Double Truck)

## Gardeners

RAY GUSTAFSON  
262 Angelus St .....ME 4-7764

## Gas—LP

JACKSON'S  
999 N 99 Hwy .....ME 4-4387  
GEORGE H NUNES  
Keyes Rd & 99 Hwy ...ME 4-5628  
RUBLE'S SERVICE STATION & MARKET  
W Main & Crows Ld Rd  
KE 7-3474 - ME 4-7396  
SOUZA'S BUTANE, PROPANE, INC  
N 99 Hwy .....ME 2-1041

## Gasoline & Oil Distributors

GEORGE H NUNES, SHELL OIL CO  
Keyes Rd & 99 Hwy...ME 4-5628  
DENNIS SCRANTON, SHELL OIL CO  
728 S Center St .....ME 4-7761

## Gifts—Domestic & Imported. Retail & Wholesale

GUSTAFSON'S GIFT STORE  
268 W Main St .....ME 4-5359  
TURLOCK HEALTH FOOD & SUPPLY CENTER  
112 S Center St .....ME 4-7765  
(See Display - Postcard)

## Glass

ACME GLASS CO  
710 G St, Modesto ...LA 3-5674  
120 N 1st St .....ME 4-4429  
(See Display - Reverse of Inserts)

## Glazing—Contractors

ACME GLASS CO  
710 G St, Modesto ...LA 3-5674  
120 N 1st St .....ME 4-4429  
(See Display - Reverse of Inserts)

## Goats Milk

MARKLEY'S JERSEY DAIRY FARM  
2820 Berkeley Rd,  
Rt 4, Box 3580 .....ME 4-3464

## Grain

CHRISTOFFERSEN POULTRY  
6th St & Lander Av...ME 4-4981  
SAN JOAQUIN GRAIN & WAREHOUSE  
S Center St .....ME 4-5841

## ACME GLASS CO.

Complete Guaranteed Service:  
SHOWER & PATIO DOORS ...  
STORE FRONTS ... AUTO GLASS  
... Residential, Industrial ... and  
Commercial Glazing ...  
• Shat-R-Proof Safety Glass  
• Libby-Owens-Ford  
— FREE ESTIMATES —  
Main Displays: 1st Page  
Modesto, Turlock & Oakdale Sections

# DENNIS E. SCRANTON



WHOLESALE DISTRIBUTOR OF  
**SHELL PRODUCTS**

728 S. Center St., Turlock ME. 4-7761

MAPLE SHOP  
INTERIORS

SPRAGUE-CARLTON  
CAL-SHOP

DRAPES - RUGS - LAMPS - ACCESSORIES



Jackson's Butane - Propane

PROMPT METERED DELIVERIES  
Butane - Propane  
TANK SALES & RENTALS  
EXPERT SERVICE & INSTALLATION  
FURNACES - HEATERS  
WEED OIL  
SPRAY RIG RENTALS  
CONTRACTORS  
PAVING - ROAD OILING  
LIQUID FERTILIZERS  
MIXED - BARREL LOTS

999 No. Hwy. 99  
ME 4-3505

# JACKSON'S

HOME FURNISHERS  
999 No. Hwy. 99  
TURLOCK  
ME 4-5185



INTERIOR DECORATORS

Complete Line of  
COLONIAL - MAPLE  
PROVINCIAL - MODERN



JACKSON'S PAVING  
HOT ASPHALT PAVING  
ROAD OILING  
SUBDIVISIONS - DRIVEWAYS  
PARKING LOTS.

Free Estimates - Guaranteed Work

CALL COLLECT - ME 4-4387

999 No. Hwy 99  
ME 4-4387

**Greeting Cards**

GUSTAFSON'S GIFT STORE  
268 W Main St .....ME 4-5354

**Grocers**

AIRPORT MARKET  
Lander Av & Greenway ME 4-7987  
ART'S MARKET  
W Main & Washington ME 4-6067  
BETTENCOURTS  
Rt 1, Box 760, Lander &  
Bradbury Rds .....ME 2-3265  
BROWN'S EAST MAIN MARKET  
1200 Canal Dr .....ME 4-6565  
BROWN'S FOOD MARKET  
Lander & Bernell .....ME 2-0016  
C & P MARKET  
585 W Av .....ME 4-4421  
CLARKE'S GROCERY  
701 N Broadway .....ME 4-3313  
DONALDSON'S MARKET  
1090 W Main .....ME 4-9958  
EAST AVE CASH GROCERY &  
TRAILER CT  
401 S Center .....ME 4-3559  
NICK GALANIS GROCERY  
3rd Av & Stevenson .....ME 4-6036  
GEER RD GROCERY  
1102 Geer Rd .....ME 4-5680  
GOLDEN WEST GROCERY  
S 1st St .....ME 4-3722  
GREEN SPOT GROCERY  
278 W Main St .....ME 4-1115  
HIWAY MARKET  
N 99 Hwy .....ME 4-7820  
LIBERTY MARKET  
710 Lander Av .....ME 4-1219  
LLOYD'S SUPER MART  
415 E Main St .....ME 4-3745  
NATIONAL MARKET  
1290 E Av .....ME 4-7342  
NODA'S RANCH MARKET  
1045 N 99 Hwy .....ME 4-4463  
PARK IN MARKET  
1061 W Main St .....ME 4-1030  
PETE'S MARKET  
129 S Broadway .....ME 4-6569  
POPE'S MARKET  
700 W Main St .....ME 4-7896  
QUALITY FOOD MARKET  
116 S 1st St .....ME 2-0730  
RUBLE'S SERVICE STATION &  
MARKET  
West Main & Crows  
Landing .....ME 4-7396  
RUDY'S FINE FOODS  
436 E Main St .....ME 4-3627  
THRIFTY SUPER MART  
1598 E Av .....ME 4-7924

**Guns**

BARD'S SPORT SHOP  
111 Lander Av .....ME 4-4543  
BOB'S HUNTERS LODGE  
Berkeley Av .....ME 2-1382

**Hardware**

DON PEDRO HARDWARE CO  
5 E Main St .....ME 4-5891  
HANSON HARDWARE & VARIETY  
W Main & Washington ME 4-7805  
J C MARTINEZ  
1001 S center .....ME 4-7281  
TURLOCK HARDWARE &  
IMPLEMENT CO  
213 W Main St .....ME 4-6737

**Hardware—  
Wholesale**

BAKER & HAMILTON  
1508 Sycamore .....ME 4-6616  
BAY CITIES WHOLESALE HARDARE  
5th St .....ME 4-5264

**Hatcheries**

CENTRAL VALLEY HATCHERY  
316 Market .....ME 4-6130  
LINDSKOOG TURKERY HATCHERY  
Berkeley Av .....ME 4-1296  
SODERQUIST HATCHERY  
401 Soderquist Rd .....ME 4-3795  
SODERSTROM TURKEY HATCHERY  
W Main .....ME 2-3718

**Hay Balers & Tools**

CORNFORTH TRACTOR CO  
1302 - 9th St, Modesto LA 2-5225  
123 N Center St .....ME 4-3377  
(See Display - Agricultural Page)

**Health Foods**

TURLOCK HEALTH FOOD &  
SUPPLY CENTER  
112 S Center St .....ME 4-7765  
(See Display - Post Card)

**Heating**

A P FISCHER, INC  
1310 - 9th St, Modesto LA 4-6274  
(See Display - Double Truck)  
I C REFRIGERATION, INC  
741 S 99 Hwy, Modesto LA 2-1065  
(See Display - Inside Back Cover)  
SAUNDER'S SHEET METAL &  
HEATING  
1st & Orchard Sts .....ME 4-3636

**Heaters—Orchard**

KROELLS PACKING SUPPLY &  
TOWT WIND MACHINE  
N 99 Hwy, Box 990 .....ME 4-5424  
(See Display Turlock Insert)

**High Fidelity Record  
Players**

DUBLIN FURNITURE & APPLIANCES  
200 E Main St .....ME 2-2250

**High Fidelity Systems**

RADIO ELECTRONICS  
1226 H St, Modesto LA 2-7678

**Hospital Equipment**

COMMUNITY AMBULANCE SERVICE  
1614 H St, Modesto LA 3-9191  
(See Display - Professional Page)

**Hotels**

ALFORD HOTEL  
219 S Broadway .....ME 4-9953  
CAROLYN HOTEL  
207 E Main St .....ME 2-3166  
HOTEL HOLLY  
214 W Main St .....ME 4-5443  
HOTEL ST ELMO  
112 S 1st St .....ME 4-6542  
HOTEL TURLOCK  
140 W Main St .....ME 2-0192  
TOURIST HOTEL  
122 N Broadway .....ME 4-6416  
HOTEL WAKEFIELD & APARTMENTS  
123 H 99 Hwy .....ME 4-9998

**House Movers**

AMERICAN HOUSE MOVERS  
2112 Blue Gum Av,  
Modesto .....LA 2-1288  
TURLOCK HOUSE MOVERS  
267 Florence .....ME 4-5113

**Housewares—**

**Appliances**  
DUBLIN FURNITURE & APPLIANCES  
200 E Main St .....ME 2-2250

**Gustafson's Gift Shop**



GIFTS • BIBLES • CHILDREN'S BOOKS • STATIONERY  
GREETING CARDS • PICTURE FRAMING • SCHOOL SUPPLIES

Sacred Records - - Sunday School Supplies  
9 A.M. to 5:30 P.M. — SIX DAYS A WEEK

Owned and Operated by Oscar and Frances Gustafson

268 W. MAIN ST. • TURLOCK • ME 4-5359

**Hydraulic Hoists &  
Frame Work**

LAKESIDE TRUCK BODY CO  
S 99 Hwy .....ME 2-1386

**Ice**

CENTRAL CALIFORNIA ICE CO  
500 N 99 Hwy .....ME 4-4516

**Ice Cream**

PENGUIN ICE CREAM No. 1  
705 Lander Av .....ME 4-7288  
PENGUIN ICE CREAM No. 2  
847 E Main St .....ME 4-6191

**Ignitions**

NICK'S AUTO ELECTRIC  
118 Lander Av .....ME 4-3543

**Incinerators**

CURRIERS OF MODESTO  
1912 Sunrise Av .....LA 4-0738

**Industrial Equipment**

CORNFORTH TRACTOR CO  
1309 - 9th St, Modesto LA 2-5225  
123 N Center St .....ME 4-3377  
(See Display - Agricultural Page)

**Soderquist Hatchery**

**CUSTOM HATCHING  
A SPECIALTY**

401 SODERQUIST RD.  
ROUTE 3, BOX 28

*Turlock*

Office ME 4-3795  
Residence ME 2-1393

**Insulation**

VALLEY ASBESTOS CO  
1601 McHenry Av ..... LA 4-5188

**Insurance**

ALLSTATE INS CO  
431 E Main St ..... ME 4-7717  
CAL-FARM INS CO  
1405 8th St ..... LA 2-7278  
HARRY CIRAOLO  
514 McHenry Av,  
Modesto ..... LA 2-4045  
PHILIP O ERICKSON,  
STATE FARM INS  
761 W Main St ..... ME 4-3584  
ORVILLE L GROSS  
127 N 99 Hwy ..... ME 4-1184

INSURANCE SECURITIES, INC  
1432 Merritt ..... ME 2-0736  
JOHNSON INSURANCE AGENCY  
248 W Main St ..... ME 4-4901  
MORRIS C KNUTSON  
406 Park St ..... ME 4-1275  
LONG INSURANCE AGENCY  
428 E Main St ..... ME 4-4316  
MUTUAL LIFE INS CO OF  
NEW YORK  
1308 Cahill Av ..... ME 4-1255  
HARRY P RAYMUS INS AGENCY  
140 S Broadway ..... ME 2-1036  
RICKENBACHER AGENCY  
137 S Center St ..... ME 4-6689  
LESTER H SHOCK  
Mailing Address,  
P O Box 1026 ..... ME 4-5454

Office Address,  
20th Century Motel ... ME 4-5454  
RAY WASHBURN INS  
1245 Center St ..... ME 4-5247  
GLEN D WINANS  
127 S Center St ..... ME 4-6500

**Interior Decorators**

JACKSON'S  
999 N 99 Hwy ..... ME 4-4387

**Investment Companies**

D'ORAZI INVESTMENT CO  
422 E Main St ..... ME 4-7870

**Iron Work**

GEORGE SLOW  
Walnut Rd ..... ME 4-5229  
TURLOCK IRON & MACHINE WORKS  
388 N 99 Hwy ..... ME 2-1071

**Jewelers**

DAVID F HALL'S JEWELRY  
11 E Main St ..... ME 4-3672  
GLOECKLER JEWELER  
235 W Main St ..... ME 4-5152  
SIMPSON JEWELRY CO  
104 W Main St ..... ME 4-4303  
ZIMMERMAN JEWELERS  
121 W Main St ..... ME 4-1751

**Kitchen Equipment**

ARTCRAFT INDUSTRIES  
548 N 1st St ..... ME 4-5392

**Labeling, Lidding,**

**Nailing Contractors**

KEHN NAILING CO  
P O Box 452, Office... ME 4-5374  
Res ME 4-6339, \* Mobile ME 4-5428

**Labor Contractors**

FRANK GALLARDO  
689 Alpha ..... ME 4-5622

**Land Leveling**

LINDQUIST BROS  
881 W Main St ..... ME 4-4111  
EARL T PAULSON  
1005 Stanislaus ..... ME 2-0037

**Laundries**

B K B LAUNDROMAT  
278 W Main St ..... ME 4-7337  
SNOW WHITE LAUNDRY  
352 W Olive St ..... ME 2-1001  
TURLOCK STEAM LAUNDRY  
139 S 99 Hwy ..... ME 2-1343  
WASHETTE  
390 Minerva ..... ME 4-1163

**Lawnmowers—Sales**

**Repairing & Sharpening**

JUSTUS LAWNMOWER SHOP  
1049 Kenwood Av .... ME 4-6383

**Linen Supply**

MISSION LINEN SUPPLY  
146 S 1st St ..... ME 4-1130

**Linoleum**

DON'S FLOOR COVERING  
128 Lander Av ..... ME 4-3576

**MORRIS C. KNUTSON**

SPECIAL AGENT

**NEW YORK LIFE INSURANCE CO.**

- LIFE
- ACCIDENT
- HOSPITALIZATION
- EDUCATION PLANS
- ESTATE PLANNING
- BUSINESS INSURANCE

406 PARK ST., P.O. Box 568, TURLOCK ME 4-1275

**LESTER H. SHOCK**

DISTRICT MANAGER

*The Penn Mutual Life Insurance Co.*



**ALL TYPES OF LIFE INSURANCE**

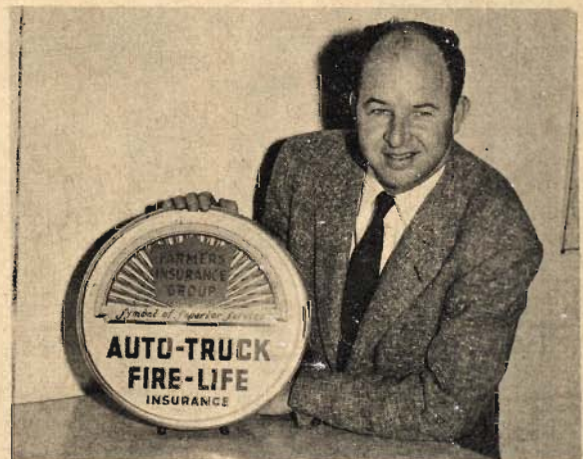
Including Estate Planning & Annuities

20th CENTURY MOTEL  
P. O. BOX 1026 - -TURLOCK

**ME 4-5454**

**RAY WASHBURN**

FARMERS INSURANCE GROUP



*All Your Insurance Needs:*

- ...AUTO - TRUCK - PUBLIC LIABILITY - GLASS...  
COMPENSATION - BURGLARY
- FIRE ● LIFE ● BONDS

124 S. CENTER ST.

TURLOCK

Office: ME 4-5247  
Home: ME 4-7441

**Liquor Stores**

**BETTENCOURT'S**  
Rt 1, Box 760,  
Lander & Bradbury Rd ME 2-3265  
**BRADLEY'S LIQUOR STORE**  
328 Golden State Hwy. ME 4-5586  
**GORDON'S LIQUOR STORE**  
130 S 1st St ..... ME 2-0706  
**ROSELLE'S BOTTLE SHOP**  
500 E Main St ..... ME 4-3764  
**TURLOCK LIQUOR HOUSE**  
147 N Hwy 99 ..... ME 2-1890

**Livestock**

**PETE DeVRIES**  
East Av ..... ME 4-1178  
**JOHN DOMPELING**  
Parks Rd ..... ME 4-4115  
**MANUEL J ESPINOLA**  
Bothn Rd ..... ME 2-0146

**Loan Companies**

**NATIONAL FARM LOAN ASSN**  
142 S Broadway ..... ME 4-6534  
**PACIFIC FINANCE LOANS**  
231 W Main St ..... ME 2-1026

**Lubrication**

**CHEY'S FLYING A SERVICE**  
486 N 99 Hwy & Geer Rd ME 2-2025  
**NORM LARSON'S UNION SERVICE**  
201 N Broadway ..... ME 4-3685  
**LITTLE'S TEXACO SERVICE**  
1302 N 99 Hwy ..... ME 4-7962

**JUSTUS  
LAWNMOWER  
SHOP**



Leading Brand Name Power Mowers  
● **TORO** ● **FOLEY**  
● **ECLIPSE** ● **TRIMMER**  
COMPLETE SHARPENING SERVICE  
**BRIGGS STRATTON ENGINES**  
ALL TYPES OF  
**MOWER MOTORS REPAIRED**  
QUALITY LAWMOWER  
SAW & CUTLERY  
REPAIR & SHARPENING  
Sales & Service for  
**COMET POWER SAWS**  
**McCULLOCH CHAIN SAWS**  
**ME 4-6383**  
1049 KENWOOD TURLOCK

**ZIMMERMAN JEWELERS**



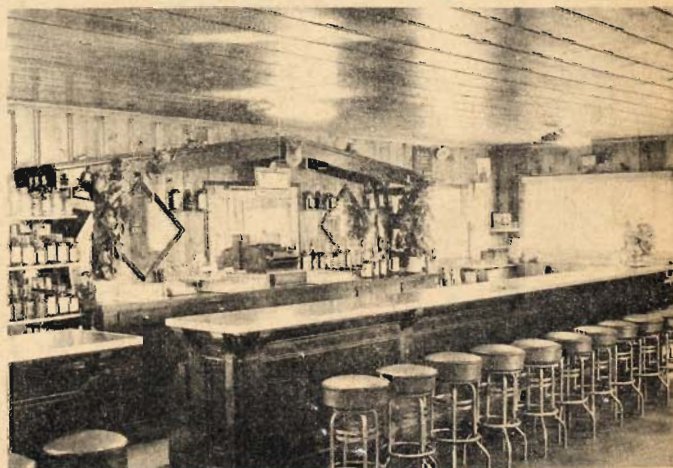
THE DIAMOND STORE OF TURLOCK  
NATIONALLY ADVERTISED WATCHES  
COMPLETE LINE OF  
**JEWELRY ACCESSORIES**  
REPAIRS  
FEATURING BLUE WHITE DIAMONDS  
Budget Terms  
Locally Owned  
CUSTOMER CONFIDENCE OUR RICHEST JEWEL  
8:30 A.M. to 5 P.M. ● 6 DAYS A WEEK  
Owned & Operated by Russell Zimmerman  
**121 W. Main St. - Turlock - ME 4-1751**

**Snow White LAUNDRY**  
352 E. OLIVE Phone ME 2-1001



**Complete Laundry Service**  
FOR THE CLEANEST NUMBER IN TOWN CALL ME 2-1001  
Free Pick-Up and Delivery  
ONE DAY SERVICE ON SHIRTS — IN BY 9 A.M. - OUT BY 5 P.M.  
**One Day Laundromat Service - Shag Rugs & Bedspreads**  
WEEK DAYS: 8 A.M. to 6 P.M. .... SATURDAYS: 8 A.M. to 1 P.M.  
**352 E. OLIVE TURLOCK ME 2-1001**

**BETTENCOURT'S**



Where you can drop in for Your Favorite Drink—or—in our Package Store—Obtain the best in Imported and Domestic Wines & Liquors

**NORWALK GAS & OIL**

Nationally Advertised Beers

**ICE CREAM**

WE CARRY FAMOUS BRAND GROCERIES  
FROZEN FOODS AND DRUG SUNDRIES

Mr. & Mrs Frank Bettencourt, Owners  
**LANDER & BRADBURY ROAD, TURLOCK MErcury 2-3265**