

OAKDALE GENERAL INFORMATION

OFFICIALS

CITY OF OAKDALE
(County of Stanislaus)
Incorporated November 24, 1906
General Law City. Population 4,336.
Council meets 1st and 3d Mondays
of Month
Mayor, W B Reynolds
Councilman . . . Harold C Walther
Councilman . . . James A Cochran
Councilman . . . Geno J Bianchi
Councilman . . . Daniel F Donnelly
Clerk Jas M Greenig
Attorneys . . . Bush-Ackley-Millich
Police Chief . . . Clay R Dorroh
Fire Chief J B Pecchenino
Treasurer George H Grohl
Administrator . . John T Schulte
Auditor Jas M Greenig
Purchasing Agent . John T Schulte
Recreation Director . Alex Wallace
Engineer John T Schulte
Tax Collector Jas M Greenig
Street Supt'd . . . Wm J Largout
Supt'd of Pub Wks . . W B Martin
Bldg Insp'r Harry Himes
School Supt'd (Oakdale Union
Elm Sch Dist) B W Gripenstraw
Sch Supt'd (Oakdale-Joint Union
High Sch Dist) . . . C W Royce
Civilian Defense Dir W B Reynolds
Electrical Insp'r . . . Ben Bishop
Assessor County Stanislaus

CHURCHES

OAKDALE CHURCHES AND THEIR SERVICES
ASSEMBLY OF GOD
BETHEL ASSEMBLY OF GOD
First Av at G St
Rev and Mrs F L Cook, Co-pastors
SUNDAY SERVICES
9:45 a.m. Sunday School
11:00 a.m. Morning Worship
6:00 p.m. Christ Ambassadors
7:15 p.m. Evangelistic Services
BAPTIST
CALVARY BAPTIST CHURCH
N 8th Av and D St
Ray E Wilson, pastor
SUNDAY SERVICES
9:45 a.m. Sunday School
11:00 a.m. Morning Worship Service
6:30 p.m. Baptist Youth Fellowship
7:30 p.m. Evangelistic Service
7:30 p.m. Prayer Meeting
FIRST MISSIONARY BAPTIST
Corner East and G Sts
Elder Wayne Eason, pastor
SUNDAY SERVICES
9:45 a.m. Sunday School
11:00 a.m. Morning Message
7:00 p.m. BTC
CATHOLIC
ST MARY'S CATHOLIC CHURCH
Oak and Olive Sts
Rev Bryan T O'Rourke, pastor
8:00 and 10:00 a.m. Sunday Masses
4:00 to 5:00 p.m. and 7:30 to 8:30
Confessions Saturday
CHRISTIAN SCIENCE
FIRST CHURCH OF CHRIST
SCIENTIST
Second Av and D St
SUNDAY SERVICES
9:30 a.m. Sunday School
11:00 a.m. Church Services
8:00 p.m. Wednesday Evening Serv

CHURCH OF CHRIST
CHURCH OF CHRIST
228 N 3d St
L L Freeman, minister
SUNDAY SERVICES
10:00 a.m. Bible Study
10:50 a.m. Preaching
11:45 a.m. Communion
7:30 p.m. Evening Services and
Preaching
7:30 p.m. Mid Week Service, Wed
EPISCOPAL
ST MATTHIAS EPISCOPAL CHURCH
Rev Arthur Beckwith, Vicar
SUNDAY SERVICES
8:00 a.m. Holy Communion
9:30 a.m. Church School
11:00 a.m. Morning Prayer and
Sermon
8:00 and 11:00 Holy Communion
a Prayers for the sick, Tuesday
GOSPEL
FULL GOSPEL TABERNACLE
213 S Sierra Av
Rev F P Anderson, pastor
SUNDAY SERVICES
9:45 a.m. Sunday School
11:00 a.m. Morning Worship
6:30 p.m. Young People's Service
7:45 p.m. Evangelistic Service
7:45 p.m. Bible Study and Prayer
Wednesday
LUTHERAN
ST LUKE'S LUTHERAN
West St off F St
Rev C Earl Schack, pastor
SUNDAY SERVICES
10:00 a.m. Sunday School
11:00 a.m. Church Service
METHODIST
FREE METHODIST CHURCH
122 W G St
John C Bishop, pastor
SUNDAY SERVICES
9:45 a.m. Sunday School
(Classes for everyone)
11:00 a.m. Morning Worship
4:30 p.m. Light and Life Hour
KTRB
6:45 p.m. Free Methodist Youth
Meeting
7:30 p.m. Evangelistic Service
7:00 p.m. Christian Youth Crusad-
er Tuesday
7:30 p.m. Prayer Service and Bible
Study, Wednesday
MORMON
CHURCH OF JESUS CHRIST OF
LATTER-DAY SAINTS
1141 Walnut
SUNDAY SERVICES
9:30 a.m. Priesthood Meeting
10:30 a.m. Sunday School
7:30 p.m. Sacramento Meeting
7:30 p.m. Mutual improvement,
Tuesday
NAZARENE
CHURCH OF THE NAZARENE
Rev John F Howarth, pastor
SUNDAY SERVICES
9:45 a.m. Sunday School
11:00 a.m. Morning Worship
6:15 p.m. Young People's Prayer
Hour
6:45 p.m. Young People's Service
7:45 p.m. Evangelistic Service
7:45 p.m. Midweek Services
7:30 p.m. Evangelistic and Fel-
lowship Hour
7:30 p.m. Midweek Prayer Serv-
ice, Choir Practice, Wednesday

PENTECOSTAL
PENTECOSTAL CHURCH OF GOD
239 N Sierra Av
Rev N C Hail
SUNDAY SERVICES
9:45 a.m. Sunday School
11:00 a.m. Morning Worship
OTHER CHURCHES
SEVENTH DAY ADVENTIST
Corner 3d Av and G St
P A Wyman, pastor
SUNDAY SERVICES
9:30 a.m. Church at Study
11:00 a.m. Church at Worship
7:45 p.m. Prayer and Meeting,
Wednesday
7:15 p.m. Pathfinder Club, Thurs.
7:30 p.m. Young People's Meeting
Friday
UNITED BRETHREN IN CHRIST
Corner 3d Av and E St
Rev William D Smith, pastor
SUNDAY SERVICES
9:45 a.m. Sunday School
11:00 a.m. Morning Worship
7:00 p.m. Christian Endeavor
8:00 p.m. Evangelistic Service
7:30 p.m. Prayer Meeting, Wed.

ORGANIZATIONS AND CLUBS

OAKDALE CLUBS-ORGANIZATIONS
AMERICAN LEGION
Meeting on call
American Legion Aux
Meet 3d Thursday 8 p.m. homes
AMERICAN RED CROSS HOME SERVICE
No Schedule to meet
BOY SCOUTS OF AMERICA HDQTS
Meet every Tuesday 7 p.m. at
Latter Day Saints Church
TROOP 41
Meets every Tues Methodist
Church 7 p.m.
TROOP 43 (Lions)
Meet every Thursday at Youth
Building
TROOP 46
Meets every Wednesday 6:30 p.m.
Methodist Church
TROOP 49 (VFW)
Meet every Wednesday 7 p.m. at
Youth Building
POST 43 EXPLORERS (Lions)
Meets every Wednesday 7 p.m.
Youth Building
CAMPFIRE & BLUEBIRDS
CHAMBER OF COMMERCE
Meet General Membership Lunch-
eon 1st Tuesday 12 noon Episco-
pal Hall
CUB SCOUTS
FALLEN ARCHES
Meets 2d & 4th Wed Grange Hall
8:00 p.m.
ITALIAN CATHOLIC FEDERATION
Meets 2d Mon Grange Hall 8 p.m.
**NATIVE DAUGHTERS OF
THE GOLDEN WEST**
Meets 1st & 3d Mon Grange Hall
8 p.m.
NEIGHBORS OF WOODCRAFT
Meets 1st Fri Grange Hall
8:30 p.m.
NEWCOMERS CLUB
Meets 1st Thurs Episcopal Hall.
1 p.m. Pot Luck

OAKDALE AAHMES SHRINE CLUB
Meetings on Call
OAKDALE ACORN REBEKAH LODGE
Meet 2d and 4th Friday 8 p.m.
IOOF Hall
OAKDALE BUSINESS GIRLS
Meet 2d and 4th Tuesday 7:30
2d Methodist Church 4th at Homes
OAKDALE DEMOCRATIC CLUB
Meet 1st Monday 8 at High Sch
Library
OAKDALE DINNER CLUB
Meet 1st and 3d Wednesday 6:30
p.m. thru Oct - June) at Dorada
Clubhouse
**OAKDALE DIVISION OF THE
MODESTO BRANCH AAUW**
Meet 2d Tuesday 8p.m. at Homes
**OAKDALE ENCAMPMENT OF
ODDFELLOWS**
Meet 1st Friday 7 p.m. Pot Luck
IOOF Hall
**OAKDALE ENCAMPMENT OF
ODDFELLOWS AUXILIARY**
Meet 1st Friday 7 p.m. Pot Luck
IOOF Hall
OAKDALE FARM BUREAU
Meet 3d Thursday 8 p.m. Episco-
pal Hall
OAKDALE AES
Meetings on call
OAKDALE FLYING CLUB
Meetings on call
OAKDALE GARDEN CLUB
Meet 2d Tuesday 2 p.m. Dorada
Clubhouse
OAKDALE GRANGE
Meet 2d and 4th Thursdays
2d Pot Luck 7:30 p.m.
4th 8:00 p.m.
OAKDALE GRANGE ECS
Meet 2d Monday 1:30 p.m.
Grange Hall
OAKDALE HOME DEPT
Meet 4th Friday 2 p.m. Homes
OAKDALE KIWANIS CLUB
Meet every Monday 12 noon at
Episcopal Hall
OAKDALE LIONS CLUB
Meet 2d and 4th Thurs 7:00 p.m.
Dorada Clubhouse
OAKDALE LODGE F & AM
Meet 2d and 4th Tuesdays 8 p.m.
IOOF Hall
OAKDALE LODGE IOOF
Meet every Thursday 8 p.m. IOOF
Hall
OAKDALE LODGE OES
Meet 1st and 3d Tuesday 8 p.m.
IOOF Hall
OAKDALE MINISTERIAL ASSN
Meet 1st Tuesday 9 a.m. Churches
OAKDALE REPUBLICAN WOMEN
Meet 1st Thursday 10 a.m. Homes
OAKDALE ROTARY CLUB
Meet every Wednesday 12 noon
Episcopal Hall
OAKDALE SADDLE CLUB
Meets on Call
OAKDALE SOROPTIMIST CLUB
Meet every Wednesday 12 noon
Methodist Church
OAKDALE STAR LITE CLUB
Meet 4th Monday 8 p.m. Homes
OAKDALE THETA RHO
Meet 1st and 3d Mondays 7:30
p.m. IOOF Hall
OAKDALE UNION
Meet 2d Wednesday 1 mo 2 p.m.
next mo 8 p.m. Grammar School
OAKDALE UNION
Meet 3d Thursday 8 p.m. High
School Library

ORGANIZATIONS AND CLUBS

- OAKDALE WOMEN'S CLUB**
Meet 1st Tuesday 1 p.m. Luncheon at Dorada Clubhouse
- ORDER OF RAINBOW OAK SUMMIT ASSEMBLY**
Meet 2d Wed 8 p.m. 4th Sat 12:30 p.m. Pot Luck Knights Ferry Masonic Hall
- SPORTSMEN'S CLUB**
Meet 1st Monday 6:30 p.m. Rosini Ranch
- VETERANS OF FOREIGN WARS**
Meet 1st and 3d Wednesdays 8 p.m. VFW Hall
- VETERANS OF FOREIGN WARS AUXILIARY**
Meet 1st and 3d Wednesdays 8 p.m. VFW Hall
- WCTU**
Meet 1st Tuesday 1:30 p.m. Homes
- WORLD WAR II VETERANS**
Meet 2d and 4th Tuesdays 8 p.m. World War II Hall
- YOUNG LADIES INSTITUTE**
Meet 1st and 3d Tuesdays 8 p.m. Grange Hall
- YOUNG MEN'S INSTITUTE**
Meet 1st and 3d Tuesdays 8 p.m. Grange Hall

OAKDALE STREET GUIDE

- FIRST AV N**
Begins at F St running NW. Intersected by E St, D St, C St, B St, A St ends at North St.
- FIRST AV S**
Begins at F St running SE. Intersected by G St, H St, I St ends at J St.
- SECOND AV N**
Begins at F St running NW. Intersected by E St, D St, C St, B St, A St, ends at North St.
- SECOND AV S**
Begins at F St running SE. Intersected by G St, H St, I St ends at J St.
- THIRD AV N**
Begins at F St running NW. Intersected by E St, D St, C St, B St, A St ends at North St.
- THIRD AV S**
Begins at F St running SE. Intersected by G St, H St, I St ends at J St.
- FOURTH AV N**
Begins at F St running NW. Intersected by E St, D St, C St, B St ends at A St.
- FOURTH AV S**
Begins at F St running SE. Intersected by G St, H St, I St, ends at J St.
- FIFTH AV N**
Begins at F St running NW. Intersected by E St, D St, C St, B St ends at A St.
- FIFTH AV S**
Begins at F St, running SE. Intersected by G St, H St, I St, ends at J St.
- SEVENTH AV**
Begins at E St, running NW. Intersected by D St ends at C St.
- EIGHTH AV**
Begins at E St running NW. Intersected by D St ends at C St.
- A ST**
Begins at Laurel St running NE. Intersected by California Av, First Av, Second Av, Third Av, Yosemite Av, Sierra Av, Fourth Av, Fifth Av ends at Sixth Av.
- B ST**
Begins at Laurel St running NE. Intersected by California Av, First Av, Second Av, Third Av, Yosemite Av, Sierra Av, Fourth Av, Fifth Av ends at Sixth Av.
- C ST**
Begins at First Av running NE. Intersected by Second Av, Third Av, Yosemite Av, Sierra Av, Fourth Av, Fifth Av, Sixth Av, Seventh Av, Eighth Av, Johnson St, continues into county.
- D ST**
Begins at First Av, running NE. Intersected by Second Av, Third Av, Yosemite Av, Sierra Av, Fourth Av, Fifth Av, Sixth Av, Seventh Av, Eighth Av continues to dead end.
- E ST**
Begins at First Av, running NE. Intersected by Second Av, Third Av, Yosemite Av, Sierra Av, Fourth Av, Fifth Av, Sixth Av, Seventh Av, ends at Eighth Av.
- F ST**
Begins at State Highway 120 at Bryan Av, running NE. Intersected by Blankenship St, Mann Av, Gilbert St, Laurel Av, California Av, West St, Davitt St, Church St, First Av, Second Av, Third Av, Yosemite Av, Sierra Av, Fourth Av, Fifth Av, Sixth Av, Grove St, East St, Johnson St, continues into county.
- G ST**
Begins at Bryan Av, running NE. Intersected by Mann Av, Gilbert St, Bardo Av, West St, Davitt St, Church St, First Av, Second Av, Third Av, Yosemite Av, Sierra Av, Fourth Av, Fifth Av, Sixth Av, Grove St, ends at East St.
- H ST**
Begins at Bryan Av, running NE. Intersected by Mann Av, Gilbert St, Bardo Av, Dodge Av, West St, Davitt St, Church St, First Av, Second Av, Third Av, Yosemite Av, Sierra Av, Fourth Av, Fifth Av, Sixth Av, Grove St ends at Peder- sen Rd.
- I ST**
Begins at Mann Av, running NE. Intersected by Gilbert St, Dodge Av, ends at Davitt St. Begins again at First Av intersected by Second Av, Third Av, ends at Yosemite Av. Begins again at Sierra Av, intersected by Fourth Av, Fifth Av, ends at Sixth Av.
- J ST**
Begins at Hinkley Av running NE. Intersected by Ryan Av, Mann Av, Dodge Av, Davitt St, Church St, First Av, Second Av, Third Av, Yosemite Av, Sierra Av, Fourth Av, Fifth Av, ends at Sixth Av.
- ALLEN AV**
Begins at Warrington Av, running W to city limits.
- ASH AV**
Begins at State Hwy 120 running SE to dead end.
- BARDO AV**
Begins at G St running SE ends at H St.
- BARTON PK**
Begins at Walnut Av, ends at Kimball Av.
- BIRDWELL AV**
Begins at Davitt St, running SW to dead end.
- BLANKENSHIP ST**
Begins at State Highway 120, running N. Intersected by Olive Av, Pleasanton Pl ends at Poplar Av. Then W, continues into county.
- BRICHETTO RD**
Begins at Walnut Av, curving S,
- BRYAN AV**
Begins at State Hwy 120 running N. Intersected by Olive Av, Pleasanton Pl, ends at Poplar Av.
- BRYAN AV S**
Begins at H St, running SE. Intersected by J St to dead end.
- CALIFORNIA AV**
Begins at State Hwy 120 running N then NW. Intersected by Poplar Av, Magnolia Av, Walnut Av, B St, A St, ends at North St.
- CENTER ST**
Begins at Yosemite Av running NE. Intersected by Sierra Av to dead end.
- CHURCH ST**
Begins at F St running SE. Intersected by G St, H St, J St, to dead end.
- DAVITT ST**
Begins at F St running SE. Intersected by G St, H St, I St, J St, Birdwell Av to dead end.
- DODGE AV**
Begins at H St, running SE. Intersected by I St, ends at J St.
- EAST ST**
Begins at F St running SE, ends at G St.
- EUCALYPTUS**
Begins at Walnut Av running N. Intersected by Kimball Av, ends at North St and Laurel Av.
- GILBERT ST**
Begins at F St running SE, then curving W, then SE. Intersected by G St, H St, I St, J St, to dead end.
- GROVE ST**
Begins at F St, running SE. Intersected by G St, ends at H St.
- HINKLEY AV**
Begins at H St running SE. Intersected by J St, to dead end.
- JOHNSON ST**
Begins at F St running NE ends at C St.
- KIMBALL AV**
Begins at Eucalyptus St, running W. Intersected by Reynolds Av, Barton Pk, to dead end.
- LAMBUTH ST**
Begins at State Hwy 120 running N. Intersected by Olive Av, Pleasanton Pl, Poplar Av, Magnolia Av, ends at Walnut Av.
- LAUREL AV**
Begins at State Hwy 120, running N. Intersected by Poplar Av, Magnolia Av, B St, A St, North St, ends at River Av.
- LEE AV**
Begins at State Hwy 120, running N to dead end.
- LOTTIE ST**
Begins at First Av, running SW to dead end.
- MAGNOLIA AV**
Begins at D St, running SW then W. Intersected by California Av, Laurel Av, Maxwell Av, Lambuth Av, School St, Warrington Av, ends at Sunset Pk.
- MANN AV**
Begins at F St running SE. Intersected by G St, ends, begins again at H St. Intersected by I St, J St to dead end.
- MAPLE AV**
Begins at Walnut Av, curving S, then W to dead end.
- MAXWELL AV**
Begins at Walnut Av running S. Intersected by Magnolia Av, Poplar Av, ends at Pleasanton Pl.
- NORTH ST**
Begins at Laurel St, running NE then NW. Intersected by California Av, First Av, Second Av, Third Av, Yosemite Av, continues into county.
- OAK AV**
Begins at State Hwy 120 running N. Intersected by Olive Av, Pleasanton Pl, Poplar Av, Allen Av, Magnolia Av, Maple Av, ends at Walnut Av.
- OLIVE AV**
Begins at F St, running W. Intersected by Blankenship St, Bryan Av, Lambuth Av, Warrington Av, Stanislaus Av, Oak Av, continues to county.
- PEDERSON RD**
Begins at H St, running SE, then E to dead end.
- PINKSTON AV**
Begins at E St, running N, ends at Magnolia Av.
- PLEASANTON PL**
Begins at Maxwell Av, running W. Intersected by Blankenship St, Bryan Av, ends at Lambuth. Begins again intersected by Warrington Av, Stanislaus Av, Oak Av to dead end.
- PONTIAC AV**
Begins at Oak Av, running W to dead end.
- POPLAR AV**
Begins at California Av running W. Intersected by Laurel Av, Maxwell Av, Blankenship St, Bryan Av, Lambuth St, Warrington Av, Stanislaus Av, Oak Av, to dead end.
- REYNOLDS AV**
Begins at Kimball Av, running S to dead end.
- RIVER AV**
Begins at Second Av, running SW. Intersected by Laurel Av, continues to dead end.

WALNUT AV
Begins at C St running W. Intersected by California Av, Lauren Av, Maxwell Av, Eucalyptus St, Lambuth Av, School St, Parton Pk, Maple Av, Oak Av ends at Brichetto Rd.

WARRINGTON AV
Begins at Magnolia Av. Intersected

by Allen Av, Poplar Av, Pleasanton Pl, ends at Olive Av.

WEST ST
Begins at F St running SE. Intersected by G St, ends at H St.

WOOD AV
Begins at State Highway 120 running SE. Intersected by H St, continues into county.

YOSEMITE AV N
Begins at F St running NW. Intersected by E St, D St, C St, B St, A St, ends at North St.

YOSEMITE AV S
Begins at F St, running SE. Intersected by B St, H St, I St, J St, Center St, South St, continues into county.

SOUTH ST
Begins at Yosemite Av, running NE. Intersected by Sierra Av; to dead end.

STANISLAUS AV
Begins at Poplar S. Intersected by Pleasanton Pl, ends at Olive Av.

SUNSET PK
Sunset at Magnolia Av, running W, then S to dead end.

OAKDALE CLASSIFIED DIRECTORY

Adding Machines

McDOWELL'S
1116 G St, Modesto ..LA 2-3140

Agricultural Implements

CORNFORTH TRACTOR COMPANY
132 - 9th St, Modesto..LA 2-5225
(Agricultural Page)

Agricultural Minerals

JOHN B FLINT
P O Box 12422027 & 2515

Air Compressors

BENSON & ZIMMERMAN
217 N 3rd St 6841
11th & H Sts, Modesto.LA 4-3131
I C REFRIGERATION SERVICE, INC
741 So 99 Hwy,
ModestoLA 2-1065
(See Display - Inside Back Cover)

Air Compressors Rental

BERRY & LEWIS RENTALS
1116 McHenry Av, Mod.LA 3-8038
(See Display - Reverse Double Truck)

Air Conditioning—Sales & Service

BROWN SHEET METAL
1105 West F St 8021

A P FISCHER
1310 - 9th St, Modesto.LA 4-6274
(See Display - Double Truck)

I C REFRIGERATION SERVICE, INC
741 S 99 Hwy, Modesto.LA 2-1065
(See Display - Inside Back Cover)

VALLEY ASBESTOS COMPANY
1601 McHenry Av, Mod.LA 4-5188

Airline Ticket Agencies

WALSER TRAVEL SERVICE
Hotel Covell, Modesto ..LA 3-0731

Airport

OAKDALE AIRPORT
Sierra Rd 6291

Ambulance Service

COMMUNITY AMBULANCE SERVICE
1614 H St, Modesto ..LA 3-9191
(See Display - Professional Page)

Auto Accessories

HADLEN FORD MERCURY
500 East F St 6561

DAVE SONDEÑO'S CLOVER PONTIAC
505 East F St 8621

OAKDALE TRUCK TERMINAL
Rt 2, Bx 959, Sonora Hwy .9451

Auto Body & Fender Repair

HADLEN FORD MERCURY
500 East F St 6561

TOW SERVICE GARAGE
531 Crows Landing Rd..LA 2-1855
(See Display - Inside Front Cover)

WALTHER'S BODY WORKS
143 N 3rd St4021

Auto Convertible Tops

TROY BUNCH, The Seat Cover King
13th & H Sts, Modesto.LA 4-2604
(See Display - Backstrip & Postcard)

DAVE SONDEÑO'S CLOVER PONTIAC
505 East F St 8621

Auto Dealers—Foreign

DAVE SONDEÑO'S CLOVER PONTIAC
505 East F St 8621

Auto Painting

BENSON & ZIMMERMAN
217 N 3rd Av.....6841
11th & H Sts, Modesto LA 4-3131
(See Display - Page Facing Inside Back Cover)

TOW SERVICE GARAGE
531 Crows Landing Rd,
ModestoLA 2-1855
(See Display - Inside Front Cover)

(Continued Page 254)

WALTHER'S BODY WORKS

Specialized Body & Fender Work

- AUTO PAINTING
 - GLASS WORK
- Radiator Repair . . . Wreck Rebuilding



*Frame Straightening
& Wheel Aligning*

★ **24 Hour Tow Service** ★

143 No. 3rd Ave.
OAKDALE

HAROLD C. WALTHER
OWNER

Phone: 4021

AFTER 5 P. M. 9760 - 9850 - 2821



Haidlen FORD-MERCURY



A New Kind Of FORD



MERCURY

Dream Car Design

500 EAST "F" ST.

Tel: 6561

OAKDALE

Auto Painting — (Cont.) Auto Parts

WALTHER'S BODY WORKS
143 N. 3rd St. 4021
C H WILLIAMS & SON
632 - 11th St, Modesto LA 3-8339

BENSON & ZIMMERMAN
11th & H Sts, Modesto LA 4-3131
217 N 3rd Av. 6841
(See Display - Page Facing Inside
Back Cover)

DAVE SONDENO'S

Clover Pontiac



NEW & USED CARS



VAUXHALL

505 E. "F" St.
Oakdale

Tel: 8621
Res: 7562

Auto—Radiator

WALTHER'S BODY WORKS
143 N 3rd St 4021
C H WILLIAMS & SON
632 - 11th St, Modesto LA 3-8339

Auto Repairs

CRUSE BROTHERS GARAGE
663 S Yosemite Av. 9770
HAIDLEN FORD MERCURY
500 E F St 6561
LARGENT'S GARAGE
119 S 2nd Av. 8711
OLSON'S GARAGE
135 N 3rd St 9348
SLANE'S VALLEY HOME GARAGE
Lone Tree Road & Valley Home
Road 4453
SUNDLING BROTHERS GARAGE
Sonora Hwy, half mile. E of
Oakdale 9343

Auto Dealers—New

HAIDLEN FORD MERCURY
500 E F St. 6561
HASLAM BROTHERS GARAGE
408 E F St. 6711
DAVE SONDENO'S CLOVER PONTIAC
505 E F St 8621
VAN PELT & MARCHETTI
160 N 3rd Av 6691

Auto Dealers—Used

C A BOWEN & SONS
111 N 1st St 5521
HAIDLEN FORD MERCURY
500 E F St 6561
HUBBS USED CARS
238 N Yosemite Av. 9531
DAVE SONDENO'S CLOVER PONTIAC
505 E F St 8621

Auto—Electric

TOW SERVICE GARAGE
531 Crows Landing Rd,
Modesto LA 2-1865
(See Display - Inside Front Cover).

Auto Finishes

VALLEY PAINT CO
1029 - 11th St, Modesto LA 3-1809
(See Display - Modesto Insert)

Auto Frame

Straightening

ISAAC'S WHEEL ALIGNMENT
SERVICE
924 W F St. 9309
TOW SERVICE GARAGE
531 Crows Landing Rd,
Modesto LA 2-1865
WALTHER'S BODY WORKS
143 N 3rd St 4021
C H WILLIAMS & SON
632 - 11th St LA 3-8339

Auto Glass

ACME GLASS CO
317 East E St. 9137
710 G St, Modesto LA 4-5674
(See Display - Reverse of Inserts)

Automotive Service

HAIDLEN FORD MERCURY
500 E F St 6561
DAVE SONDENO'S CLOVER PONTIAC
505 E F St 8621

Auto Spring

Manufacturers

C H WILLIAMS & SON
632 - 11th St, Modesto LA 3-8339

Auto Supplies

WESTERN AUTO ASSOC STORE
202 E F St 7321

Auto Towing

HAIDLEN FORD MERCURY
500 E F St 6561
TOW SERVICE GARAGE
531 Crows Landing Rd,
Modesto LA 2-1865
(See Display - Inside Front Cover)
WALTHER'S BODY WORKS
143 N 3rd St 4021

Auto Upholstery

TROY BUNCH, The Seat Cover King
13th & H Sts, Modesto LA 4-2604
(See Display - Backstrip)

Auto Wash

McHENRY 3 MINUTE CAR WASH
McHenry & Morris Avs,
Modesto LA 3-7856
SUPER SPEED AUTO LAUNDRY
4th & H Sts, Modesto. LA 3-6300

Auto Wheel Alignment

C H WILLIAMS & SON
632 - 11th St, Modesto LA 3-8339

Auto Wreckers

ANDERSON'S AUTO WRECKERS
Sonora Hwy 9731

Awnings—Aluminum

VALLEY ASBESTOS COMPANY
1601 McHenry LA 2-1287

Bakeries

MOSS ROSE BAKERY
118 N 3rd Av 9109

Banking

MODESTO BUILDING & LOAN ASSN
821 - 10th St, Modesto LA 3-2648

Banks

BANK OF AMERICA
305 E F St 6031

Barbecue Equipment

CURRIERS OF MODESTO
521 Santa Rita Av. LA 4-0738

Batteries

BENSON & ZIMMERMAN
217 N 3rd St 6841
11th & H Sts, Modesto LA 4-3131
(See Display - Page Facing Inside
Back Cover)
OAKDALE TRUCK TERMINAL
Rt 2, Box 959 9451

Benson & Zimmerman

Stanislaus County's Oldest & Largest

PARTS & EQUIPMENT DISTRIBUTORS

217 N. THIRD AV., OAKDALE

6481

Batteries — (Cont.)

DAVE SONDENOS CLOVER PONTIAC
505 E F St8621
TOW SERVICE GARAGE
531 Crows Landing Rd..LA 2-1865
(See Display - Inside Front Cover)

Beauty Shop

BEAUTY LANE
328 E F St.....9447 & 2482
BETH'S BEAUTY NOOK
604 E F St.....9603
FASHIONS FINEST SALON OF
BEAUTY
429 McHenry Av, Modesto LA 4-1409
FLORA'S BEAUTY SALON
223 N 3rd St6741
MODERNE BEAUTY SHOP
224 N 2nd St9331
OAKDALE BEAUTY SALON
129 N 3rd St9084

Bedsprads

TROY BUNCH, The Seat Cover King
13th & H Sts, Modesto...LA 4-2604

Blacksmithing

OAKDALE IRON WORKS
123 N Sierra Av8016
TAYLOR & SONS
322 S Yosemite Av3721
C H WILLIAMS & SON
632 - 11th St, Modesto LA 3-8339

Bottlers

OAKDALE SODA WORKS
130 S 5th St3581

Bowling Alleys

OAKDALE BOWL & FOUNTAIN
148 N Yosemite Av.....5171

Brake Work

TWO SERVICE GARAGE
531 Crows Landing Rd..LA 2-1865
(See Display - Inside Front Cover)

Breeders—Dairy

CALIFORNIA DAIRY BREEDERS INC
1023 West F St9344

Breeding

VALLEY ARTIFICIAL BREEDERS
Oakdale 9500

Bridles

OAKDALE STABLES & SADDLERY
Sonora Hwy 9241
ROENS HITCHIN POST
Sonora Hwy Rt 2 Bx 971 at East
City Limits 8571

Building & Loan Assn

MODESTO BUILDING & LOAN ASSN
821 10th St Modesto LA 3-2648

Building Materials

HIMES BUILDING MATERIALS
412 S Yosemite Av9653

Bus Depot

CLARK STAGE DEPOT
116 N Yosemite Av2934

**Business Opportunity
Brokers**

HARRY CIRAULO
514 McHenry Av
Modesto LA 2-4050

Cabins

VAUGHAN'S SHADY LANE TRAILER
COURT HWY
120 at City Limit Sign9462

Moderne
BEAUTY SALON

Complete Beauty Service



★
HAIR
COLORING
&
BLEACHING
★



SPECIALISTS
IN HAIR
STYLING &
PERMANENT
WAVING

Your House Of Loveliness

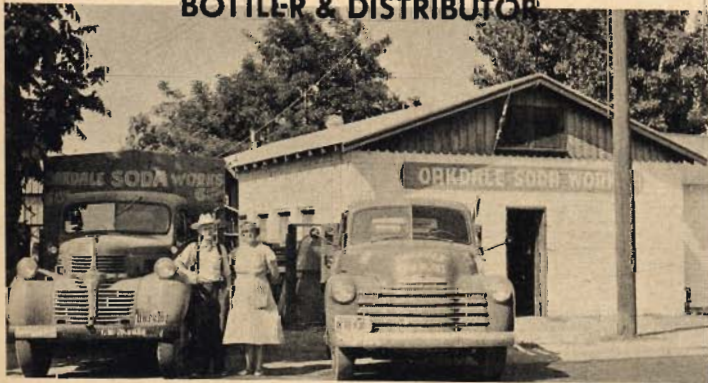
OPEN EVENINGS BY APPOINTMENT

FRANCES GRIESNER
OWNER

224 N. 2nd Av OAKDALE 9331

OAKDALE SODA WORKS

BOTTLER & DISTRIBUTOR



MISSION SODA - ALL FLAVORS - - -
QUIKY...HIRES ROOT BEER
BUBBLE-UP BEVERAGES &
SHASTA SODA

★ CARBONIC GAS FOR FOUNTAINS ★

130 S. 5th ST. Tel: 3581

MR. & MRS. C. D. RIKER

OAKDALE BEAUTY SALON

Complete Beauty Service



SHAMPOOS - CUTS - SETS - TINTING
PERMANENT WAVES - MANICURES

"Just To Suit You!"

● OPEN 9 A.M. TO 6 P.M.—6 DAYS A WEEK
Owned & Operated by JACQUELINE RIISE

129 N. 3rd Ave.

Tel: 9084

OAKDALE ELECTRIC

STATE LICENSED CONTRACTOR
APPLIANCE & SERVICE



- Authorized THERMADOR Factory Repair Station ●
- Factory Exchange Station For G.E. Blankets ●

We Carry A Wide Selection of
Specialty Lighting Fixtures



140 No. 3rd Ave. Phones 8421 Or: 9288
N. R. SCHIERNBECK, Owner 9147

JACK McLAUGHLIN

Electrical Contracting

Residential - Commercial & Industrial



☆ EXPERT PUMP & MOTOR SERVICE

We Carry A Complete Line of Wiring
Supplies

214 E. "G" St., Oakdale Tel: 9820

Cabinet Shops

THE CABINET SHOP
Modesto-Oakdale Hwy2932

Carpets—Cleaning & Repairing

HOUSE OF CARPETS
920 McHenry Av
Modesto LA 3-5664

Carports

VALLEY ASBESTOS CO
1601 McHenry Av
Modesto LA 4-5188

Cattle—Dairy

CLOVER KNOLLS DAIRY INC
26 Mile Rd 2502

Ceramics

OAKDALE FLOWER SHOP
822 West F St.....6111 - 9274

Chain Saws

OAKDALE SHARPENING SERVICE
East Sonora Hwy & Johnson 9648

Chain Saw Rentals

BERRY & LEWIS RENTALS
1116 McHenry Av
Modesto LA 3-8038
(See Display—Reverse of Dbl Truck)

Chemicals

DRY CHEMICAL PACIFIC
105 G St Modesto LA 3-8389

Clocks

OAKDALE ELECTRIC
140 N 3d Av8421-9288-9147

Clothing—Children

LINDSLEY'S CHILDREN'S SHOP
206 East F St5847

Clothing—Men & Boys

HAROLD'S STORE FOR MEN & BOYS
136 N Yosemite Av9738
THE WARDROBE
116 N 3d Av4321

Clothing—Womens

MODE O'DAY DRESS SHOP
213 East F St3531

Concrete Pipe Yards

OAKDALE CONCRETE PIPE YARD
No end of 4th St4151-9184

Contractors Awnings

VALLEY ASBESTOS CO
1601 McHenry Av
Modesto LA 4-5188

Contractors—Electrical

J F McLaughlin
214 East G St9820

Contractors—General

JOHN BIAGGI-CO
413 N Calif Av9581-2983
HOMER HOLTZCLAW
805 Kimball Av9492
HOWARD H LAUGHLIN
354 Church St 9471

Contractors—Metal

A P FISCHER INC
1310 9th St Modesto ..LA 4-6274
(See Display—Double Truck)

Cosmetics

MODERNE BEAUTY SALON
224 N 2d St 9331

Crating

MODESTO TRANSFER COMPANY
1403 9th St Modesto ..LA 2-4146
(See Display—Back Cover)

Credit Bureaus

CREDIT BUREAU OF OAKDALE
Kimball Av 9401

Curtains

TROY BUNCH BEAUTI PLEAT
DRAPERIES
1215 H St Modesto ...LA 2-1472
(See Display—Backstrip)

Dairies

LAFAYETTE DAIRY
502 N Yosemite Av3011
OAKDALE DAIRY
129 N Yosemite Av3091

Department Stores

BIANCHI'S 219 East F St4046
J C PENNEY DEPT STORE
220 East F St9112

Diesel Fuel

WAITE PAUL JOBBER, SHELL
PRODUCTS N Sierra Av....3621

Display Cases—Refrigerated

I C REFRIGERATION SERVICE, INC
741 S 99 Hwy
Modesto LA 2-1065
(See Display—Inside Back Cover)

Door Chimes

OAKDALE ELECTRIC
140 N 3d Av8421-9288-9147

Doors—Folding, Plastic & Wooden

VALLEY ASBESTOS CO
1601 McHenry Av
Modesto LA 4-5188

Doors—Shower & Sliding, Steel & Aluminum

ACME GLASS CO
317 East E St 9137
710 G St ModestoLA 3-5674
(See Display—Reverse Side of Inserts)

Drainboards—Stainless Steel

A P FISCHER INC
1310 9th St Modesto ..LA 4-6274
(See Display Double Truck)

Draperies

TROY BUNCH BEAUTI PLEAT
DRAPERIES
1215 H St Modesto ..LA 2-1472
HAWLEY'S UPHOLSTERY &
DRAPERIES
428 S 99 Hwy Modesto LA 2-4425

Drug Stores

COAST DRUG STORES INC
McHenry Village, Modesto LA 3-1723
(See Display—Reverse of Title Page)
(Continued)

**O
A
K
D
A
L
E**

ACME GLASS COMPANY

"Acme — It Means The Best!"

DISTRIBUTORS FOR
*



AUTO SAFETY GLASS
*

DEALER FOR LIBBY-OWENS FORD



It's ACME

For All Your Glass Needs . . .

- STOREFRONTS
- SHOWER & PATIO DOORS
- STEEL & ALUMINUM SASH

★ *Contractors For Residential . . . Commercial & Industrial Glazing*



●
●
Car Glass Trouble? Need Quick Service?

ACME'S 4 Nearby Stores House One Of The Largest
Stocks Of Curved And Flat Auto Glass In The San Joaquin Valley
★ For Your Convenience ★

We Work Through Your Insurance Company On All Claims

A FULL LINE OF WALLPAPER & DUTCH BOY PAINTS
CARRIED BY OUR OAKDALE & MANTECA STORES

★
MODESTO
710 "G" ST.
LA-3-5674

CALL ANY OF THE FOUR
ACME GLASS CO.
STORES FOR A FREE ESTIMATE

MANTECA
239 N. MAIN
858

TURLOCK
120 N 1ST ST.
ME-4-4429

★
ALL OUR WORK
GUARANTEED
100%

OAKDALE
311 EAST "E"
9137

Drug Stores — (Cont.)

EAST SIDE MARKET
249 N 5th St 9413
KERSTEN'S PHARMACY
226 East F St 6371
SEEBER'S DRUG STORE
308 East F St 4411

Drug Sundries

EAST SIDE MARKET
249 N 5th St 9413

Dryers

RADIO ELECTRONICS
1226 H St Modesto ... LA 2-7678

Electric Appliances

CITY APPLIANCE & ELECTRIC
147 S 2d St 9075
RADIO ELECTRONICS
1226 H St Modesto ... LA 2-7678

Electrical Appliance

Repair

OAKDALE ELECTRIC
140 N 3d Av 8421-9288-9147

Electrical—Contractor

JACK McLAUGHIN
214 E G St 9820
OAKDALE ELECTRIC
140 N 3d Av 8421-9288-9147

Electrical Fixtures

OAKDALE ELECTRIC
140 N 3d Av 8421-9288-9147

Electric Motor Shop

McALLISTER ELECTRIC MOTOR
SHOP 119 N 2d Av 4311

**Engineering—
Contractor**

CHARLES I CUNNINGHAM CO
233 Gilbert St. 8861
334 S Yosemite Av 9073

Engineering—Custom

BEST BUILT MFG CO.
233 Gilbert St. 8861
I C REFRIGERATION SERVICE, INC
741 S 99 Hwy Modesto LA 2-1065
(See Display—Inside Back Cover)

Ennz Products

DRY CHEMICAL PACIFIC
105 G St Modesto LA 3-8389

Equipment Rentals

BERRY & LEWIS RENTALS
1116 McHenry Modesto LA 3-8038
(See Display—Reverse of Dbl Truck)

Farms

AMERINE FARMS
Oakdale-Sonora Hwy 9815
SHADY LAWN FARM
River Rd 4681
SUNNY VALLEY STOCK FARM
Albers Rd 5712
TASS STOCK FARMS
Valley Home Hwy & Hiwy 120 3576

Farm Equipment

KROELL'S PACKING SUPPLY
No 99 Hwy Bx 990 ... ME 4-5424
(See Display—Turlock Insert)
C N MERRIHEW FARM & DAIRY SUPP
131 East F St 2779
TOWT WIND MACHINE
No 99 Hwy Bx 990 ... ME 4-5424
(See Display—Turlock Insert)

**Farm Implements—
Sales & Service**

CORNFORTH TRACTOR COMPANY
1302 9th St Modesto ... LA 2-5225
(See Display—Agriculture Page)

**Farm Machinery Parts &
Farm Tires**

CORNFORTH TRACTOR CO
1302 9th St Modesto ... LA 2-5225
(See Display—Agriculture Page)

Feed—Dairy & Poultry

FARMERS FEED STORE
141 N Yosemite Av ... 9950-2993

A L GILBERT COMPANY
304 N Yosemite 2917

Fertilizers

A L GILBERT COMPANY
304 N Yosemite 2917
TRYON'S NURSERY
West F St 9385

Floor Coverings

HOUSE OF CARPETS
920 McHenry Av
Modesto LA 3-5664

Florist

OAKDALE FLOWER SHOP
822 West F St 6111-9274

A. L. GILBERT CO.

Established 1899

**DAIRY & POULTRY FEEDS
LIVESTOCK FEEDS**

● FERTILIZER ● HAY & GRAIN

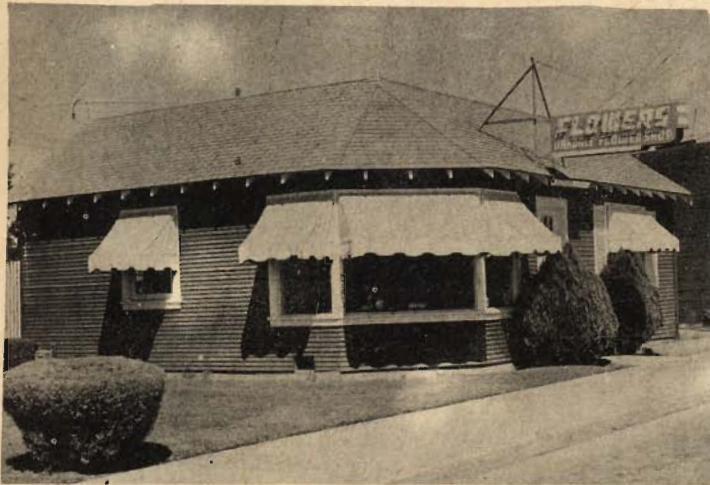
* * *

INSURANCE

304 N. YOSEMITE, Oakdale

Tel: 2917

Oakdale Flower Shop
FLOWERS FOR ALL OCCASIONS



**CUT
FLOWERS
●
CERAMICS**

*Florists
Telegraph
Delivery*



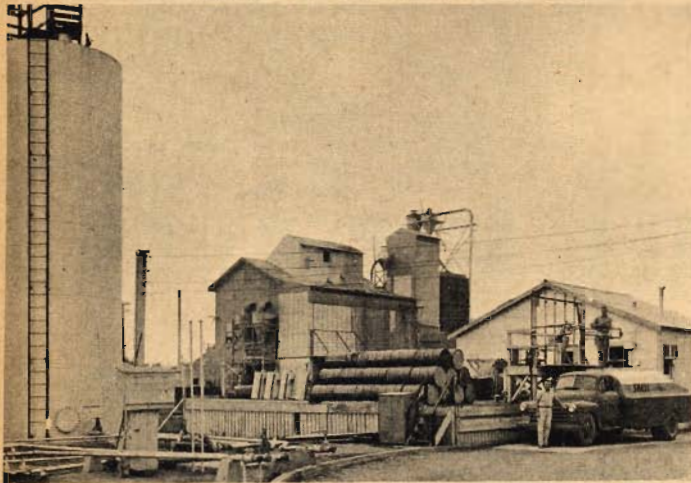
*"Say It
With
Flowers"*

**POTTED
PLANTS
●
PLANTERS**

822 WEST "F" ST., OAKDALE

Phone: 6111 or 9274

WAITE PAUL JOBBER SHELL PRODUCTS



● Gasoline ● Oil ● Diesel Fuel ● Weed Spray

TANK WAGON SERVICE

Weed Spraying Equipment To Rent

No. Sierra Drive

Oakdale

Tel: 3621

Foam Rubber & Foam Rubber Furniture

TROY BUNCH The Seat Cover King
13th & H Sts Modesto LA 4-2604
(See Display—Backstrip)

Foods

HUNT FOODS INC
554 S Yosemite Av 6911

Frost Protection

KROELL'S PACKING SUPPLY
No 99 Hwy Bx 990
Turlock ME 4-5424
(See Display—Turlock Insert)

TOWT WIND MACHINE
No 99 Hwy Bx 990
Turlock ME 4-5424
(See Display—Turlock Insert)

Frozen Foods

EAST SIDE MARKET
249 N 5th St 9413

PIGG'S FOOD MARKET
133 So Sierra 9063

Fruits

BLAIR FRUIT STAND
30 East F St 9224

Fuel Oil

WAITE PAUL JOBBER SHELL
PRODUCTS N Sierra Av 3621

Funeral Homes

OAKDALE MORTUARY
830 West F St 5121

Furnaces

BROWN SHEET METAL
1105 West F St 8021

Furniture

GRAHAM'S FURNITURE AND
APPLIANCE STORE
130 N 3rd Av 9014

Garages

TOW SERVICE GARAGE
531 Crows Landing Rd
Modesto LA 2-1865
(See Display—Inside Front Cover)
C H WILLIAMS & SON
632 11th St, Modesto LA 3-8339

Garage & Service

Station Equipment

BENSON & ZIMMERMAN
11th & H Sts Modesto LA 4-3131
217 N 3d St 6841
(See Display—Pg Facing in Bk Cvr)

Garbage Disposal

OAKDALE GARBAGE DISPOSAL
Lee Av 8644

Garden Equipment

OAKDALE SHARPENING SERVICE
East Sonora Hwy & Johnson 9648
TRYON'S NURSERY
West F St .. Bus: 9385-Res 9150

Garden Equipment

Rental

BERRY & LEWIS RENTALS
1116 McHenry Av
Modesto LA 38038
(See Display—Reverse of Dbl Truck)

Garden Supplies

A L GILBERT CO
304 N Yosemite 2917

WALLACE'S STATIONERY & GIFTS OFFICE EQUIPMENT and SUPPLIES



ALL PORTABLE TYPEWRITERS

Featuring

SMITH CORONA

SCHOOL SUPPLIES - STATIONERY - GREETING CARDS - - -
LEATHER GOODS - LUGGAGE - CHAIRS & FILES -
FINE CHINA

CRYSTAL AND GIFTS YOU WILL BE PROUD TO GIVE OR TO RECEIVE.

126 N. Yosemite Ave., Oakdale Phone 9822

EASTSIDE MARKET



Quality Groceries . . . Meats & Produce

● Drugs ● Sundries ● Notions ● School Supplies

OPEN 7 A. M. To 7 P. M.
6 Days A Week

J. S. WORD - Proprietor

249 N. 5th St., Oakdale

Tel: 9413

Gas

PACIFIC GAS & ELECTRIC CO
250 N 3d Av 6211
UTILITY BUTANE CORP
102 West F St 4191

Gas—L P

WAITE PAUL, JOBBER
No Sierra Av 3621

Gasoline & Oil

Distributors

WAITE PAUL, JOBBER, SHELL
PRODUCTS No Sierra Av 3621

Gifts—Domestic & Imported—Retail & Wholesale

TURLOCK HEALTH FOOD & SUPPLY
CENTER 112 S Center St
Turlock ME 4-7765
WALLACE'S STATIONARY & GIFTS
126 N Yosemite Av 9822

Glass

ACME GLASS COMPANY
317 East E St 9137
710 G St Modesto LA 3-5674
(See Display—Reverse of Inserts)

Glazing—Contractors

ACME GLASS COMPANY
317 East E St 9137
710 G St Modesto LA 3-5674
(See Display—Reverse of Insert)

Grain

A L GILBERT COMPANY
304 N Yosemite Av 2917
OAKDALE GRANGE NO 435
F St 9560

Grocers

BEN AKER GROCERY STORE
Valley Home Rd 3671
CLINE'S MARKET
Sonora Hwy 7576
EAST SIDE MARKET
249 N 5th St 9413
FAMILY GROCERY
Sonora Hwy 9763
FOOD BANK MARKET
812 West F St 7211
H & O FOOD MARKET
460 N Yosemite Av 5146
PETE'S GROCERY
Waterford Hwy 9513
PIGG'S FOOD MARKET
133 S Sierra Av 9063
RED & WHITE MKT OF OAKDALE
431 East F St 3821
STEWART'S FOOD MARKET
212 East F St 9624
WEST SIDE CASH GROCERY
726 West F St 9312
ZARO & CISI
117 N 3d Av 2764

Hardware

TURNER HARDWARE COMPANY
140 N 2nd Av 6331

Hatchery

WILLIAMS HATCHERY
Sonora Hwy 9541

Hay

HENRI BURTSCHI
Alvarado Rd 7697
A L GILBERT COMPANY
304 N Yosemite 2917

Hay Balers & Tools

CORNFORTH TRACTOR CO
1302 9th St Modesto .. LA 2-5225
(See Display—Agricultural Page)

Hay Dealers

A L GILBERT CO
304 N Yosemite Av 2917
ULRICH & SON HAY DEALERS
Sonora Hwy 9727

Health Foods

TURLOCK HEALTH FOOD & SUPPLY
CENTER
112 S Center St
Turlock ME 4-7765

Heaters—Orchard

KROELL'S PACKING SUPPLY
No 99 Hwy Bx 990
Turlock ME 4-5424
(See Display—Turlock Insert)
TOWT WIND MACHINE
No 99 Hwy Bx 990
Turlock ME 4-5424
(See Display—Turlock Insert)

Heating

A P FISCHER INC
1310 9th St Modesto LA 4-6274
(See Display—Double Truck)
I C REFRIGERATION SERVICE, INC
741 S 99 Hwy Modesto LA 2-1065
(See Display—Inside Back Cover)

Heating Contractors

BROWN SHEET METAL
1105 West F St 8021

High Fidelity Systems

RADIO ELECTRONICS
1226 H St Modesto LA 2-7678

Horseshoeing

JIM ROWLEY HORSESHOEING
1331 Pontiac St 9439

Hospital Equipment

COMMUNITY AMBULANCE SERVICE
1614 H St Modesto LA 3-9191
(See Display—Professional Page)

Hotels

LIVE OAK HOTEL
118 N Yosemite Av 2522-9210
YOSEMITE HOTEL & APTS
411 East F St 9225

House Movers

AMERICAN HOUSE MOVERS
2112 Blue Gum Av
Modesto LA 2-2188

Ice Cream

GILLMAN'S FROSTIES
West F & Bryant St 5101

Incinerators

CURRIERS OF MODESTO
1912 Sunrise Av
Modesto LA 4-0738

Industrial Equipment

CORNFORTH TRACTOR CO
1309 9th St Modesto .. LA 2-5225
(See Display—Agricultural Page)

ACME GLASS CO.

Complete Guaranteed Service:
SHOWER & PATIO DOORS . . .
STORE FRONTS . . . AUTO GLASS
. . . Residential, Industrial . . . and
Commercial Glazing . . .

- Shat-R-Proof Safety Glass
- Libby-Owens-Ford

— FREE ESTIMATES —

Main Displays: 1st Page
Modesto, Turlock & Oakdale Sections

Pigg's Food Market

A COMPLETE LINE OF GROCERIES & MEATS



GROCERIES • MEATS • LIQUORS
FROZEN FOOD • BEER • WINE
ALWAYS SPECIALS

We Give Discount Stamps Redeemable in Groceries

FREE PARKING

133 So. Sierra Ave., Oakdale 9063

Insecticides

TRYON'S NURSERY
West F St 9385

Insulation

VALLEY ASBESTOS COMPANY
1601 McHenry Av
Modesto LA 4-5188

Valley Asbestos Co.

Contractors & Distributors
For Stanislaus County Of

JOHNS-MANVILLE Approved
Applicators of *Spintex*
BLOWN ROCK WOOL INSULATION



ALUMARDL

- THE WORLD'S MOST BEAUTIFUL ALUMINUM AWNING!
- Monarch Tubular Weatherstripping

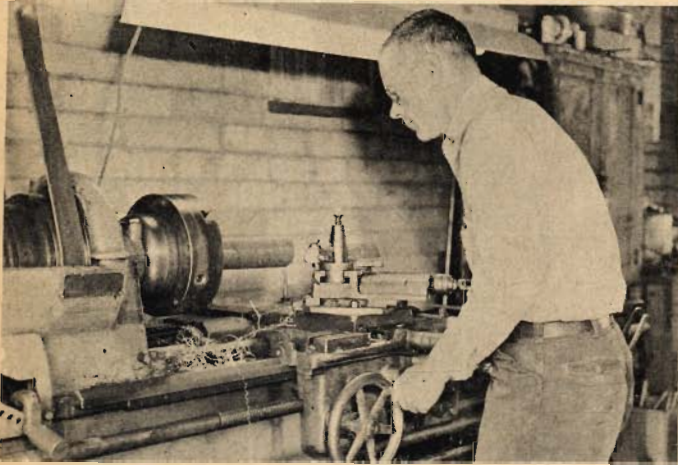
(SEE FREE CARD OFFER ON YELLOW INSERT PAGE)

1601 McHENRY

LA 4-5188

TOWNSEND & COCHRAN

All Types of Welding & Machine Repairing



General Machine Work • Tool & Die Work
Manufacturers' Material - Handling
Equipment

Free Estimates - - All Work Guaranteed

521 EAST E ST. P. O. BOX 97 Phone 8011
OAKDALE

FOR GREATER PROFIT, USE

WOLF BRAND

AGRICULTURAL MINERALS

... Derived From NATURAL Deposit In
Lake County California ...

* * *

RETURN THE HEALTH
OF YOUR LAND WITH
"NATURE'S OWN"

●
J. B. Flint

P. O. Box 1241
Oakdale

Tel: 2027
Or: 2515

Insurance

CAL-FARM INSURANCE CO
1405 8th St Modesto LA 2-7278
JIM COCHRAN-STATE FARM INS
507 West F St9327
HARRY CIRAOLO
514 McHenry Av
ModestoLA 2-4045
CARL H FROMM
Johnson St & Sonora Hiway
.....LA 3-0904-LA 2-7208
A L GILBERT COMPANY
404 N Yosemite Av2917
STATE FARM MUTUAL AUTOMOBILE
507 West F St9327
CLARENCE E WOOD
314 East F St5782
ZIMMERMAN INSURANCE AGENCY
127 N 3d Av4202

Irrigation

OAKDALE IRRIGATION DISTRICT
322 East D St6161

Irrigation Equipment

POHL METAL PRODUCTS COMPANY
135 So 4th Av9016

Jewelry

NORMAN C CASHEN
143 N 3d Av9456

Kitchen Wares

OAKDALE ELECTRIC
140 N 3d Av8421-9288-9147

Laundromats

OAKDALE WASHETERIA
363 S 5th St9440

Leather Goods

WALLACE'S STATIONERY & GIFTS
126 N Yosemite9822

Liquor

BOTTLE SHOP
415 East F St2929
CHRIS'S CORRAL
108 N Yosemite St9071
EIGHT-BALL LIQUOR SHOP
142 N Yosemite Av7721
FAMILY LIQUOR STORE
304 E F St7541
PIGG'S FOOD MARKET
133 S Sierra Av9063

Livestock

R W BILL DICKERSON
228 Laurel Av4866

Locker Plants

OAKDALE LOCKER PLANT
201 N 3d Av4241

Lumber

UNITED LUMBER YARDS
147 N Sierra Av3631

Lumber Processors

OAKDALE LUMBER PROCESSORS
308 S 5th St7411

Machine Shops

TAYLOR & SONS
322 S Yosemite Av3721
TOWNSEND & COCHRAN
521 East E St8011

Massage

J FLOCKART
19 Tioga Av9786

Meats

EAST SIDE MARKET
249 N 5th St9413
MEYER MEAT MARKET
150 S 2d Av9423
M & M MEAT MARKET
117 N 3d Av6881
PIGG'S FOOD MARKET
133 S Sierra Av9063
SUNDBORG'S MEAT COMPANY
1350 Magnolia Av9052

Meat—Curing

ANDERSON CURING PLANT
322 East E St3351

Meats & Meat Products

PORT STOCKTON SAUSAGE CO
Waterford Rd4001

Mirrors

ACME GLASS COMPANY
317 East E St9137
710 G St ModestoLA 4-5674
(See Display—Reverse of Inserts)

Motels

EL DON MOTEL
623 F St9100
OAKDALE MOTEL
828 East F St9802
VAUGHAN'S SHADY LANE TRAILER
COURT
Hwy 120, at City Limit Sign 9462

Motor Rebuilding

TOW SERVICE GARAGE
531 Crows Landing Rd
ModestoLA 2-1865
(See Display—Inside Front Cover)

Massage...

INCREASES TISSUE FLUID FLOW - -
RELAXES OVER-WROUGHT NERVES - -
AIDS ALL OTHER FORMS OF TREATMENT - - -
HELPS ONE FEEL "HIMSELF" ANEW - - -
IS RECOGNIZED ALL OVER THE WORLD!

Joe Flockhart (Uncle)
(Joe)

"Massage At Its Best"
Aasne Flockhart, R.N. In Attendance

★ FROM 1:00 P.M. Except Sunday—Evenings By Appointment.....
19 Tioga Ave., Off S. Crane Ave. Call 9786 for Directions

Motor Tuneup

TOW SERVICE GARAGE
531 Crows Landing Rd
Modesto LA 2-1865
(See Display—Inside Front Cover)

Moving & Storage

MODESTO TRANSFER COMPANY
1430 9th St Modesto ..LA 2-4146
(See Display—Backcover)

Newspapers

OAKDALE LEADER
116 S 3d Av 6761

Notions

EAST SIDE MARKET
249 N 5th Av9413

Nurseries

DUKE'S NURSERY
Oakdale-Riverbank Hwy2909
TRYON'S NURSERY
West F StBus 9385-Res 9150

Nursing Homes

EL NIDO NURSING HOME
Sawyer Av 8532
YOUNG'S CONVALESCENT HOME
431 West J St2551

Nuts & Bolts

OAKDALE IRON WORKS
123 N Sierra Av 8216

Office Equipment

WALLACE'S STATIONERY & GIFTS
126 N Yosemite Av9822

Oil

STANDARD OIL CO OF CALIF
346 East F St 9227

Oil Lubrication

OAKDALE TRUCK TERMINAL
Rt 2 Bx 953 Sonora Hwy 9451
DAVE SONDEN'S CLOVER PONTIAC
505 East F St8621

Outboard Motor Rentals

BERRY & LEWIS RENTALS
1116 McHenry Av
Modesto LA 3-8038
(See Display—Reverse Dble Truck)

Oxygen—Equipped

COMMUNITY AMBULANCE SERVICE
1614 H St Modesto ..LA 3-9191
(See Display—Professional Page)

Oxygen—Medical & Industrial

BENSON & ZIMMERMAN
11th & H Sts Modesto LA 4-3131
217 N 3d Av6841
(See Display—Pg Facing Insid Bk Cvr)

Packaging & Packing

MODESTO TRANSFER COMPANY
1403 9th St Modesto ..LA 2-4146
(See Display—Back Cover)

YOUNG'S CONVALESCENT HOME

The ONLY State Licensed Home
For Bed Patients In Oakdale



24 HOUR CARE FOR THE PARTICULAR PERSON

★ EXCELLENT FOOD ★

Owned & Operated By:
MILDRED L. YOUNG

431 W. "J" St., Oakdale

Tel: 2551

TRYON'S NURSERY & FLORIST

YOUR FRIENDLY FLORIST FOR ALLOCCASIONS



CUT FLOWERS . . .
POTTED PLANTS . . .
PLANTERS



- SEED ● INSECTICIDE
- FERTILIZER ● BEDDING
- GARDEN TOOLS
- PLANTS

DIAL 9385.

Dick & Pearl

WEST "F" ST. 1 BLOCK WEST OF OAKDALE CITY LIMITS

Home: 9150

BEN BISHOP PUMP & ELECTRIC SERVICE

MYERS

DOMESTIC WATER SYSTEMS

Jet & Submersible Pumps

★ *Special Guarantee
On Submersible Pumps*

SALES & SERVICE

Ben Bishop
OWNER

322 Yosemite Ave

Phone 4621

Paints

ACME GLASS COMPANY
710 G St Modesto . . . LA 3-5674
(See Display—Reverse of Inserts)
VALLEY PAINT COMPANY
1020 11th St Modesto LA 3-1809
(See Display—Modesto Insert)

Painters Supplies

VALLEY PAINT COMPANY
1020 11th St Modesto LA 3-1809
(See Display—Modesto Insert)

Painters

ELMER C KERL
622 Poular Av 8611

Phonographs

RADIO ELECTRONICS
1226 H St Modesto . . . LA 2-7678

Phonograph Records

RECORD CITY ELECTRONICS & TV
117 East F St 9290

Photography

FLOOD STUDIO
132 N 3d Av 2763-2846

Planters & Potted Plants

OAKDALE FLOWER SHOP
822 West F St 6111-9274
TRYON'S NURSERY
West F St . . . Bus 9385-Res 9150

Plants—Bedding

TRYON'S NURSERY
West F St . . Bus 9385-Res 9150

Plate Glass

ACME GLASS COMPANY
317 East E St 9137
710 G St Modesto . . LA 3-5674
(See Display Reverse Inserts)

Pool Halls

CLUB POOL HALL
227 East F St 9218

Pony Rides

OAKDALE STABLES & SADDLERY
Rt 2 Bx 948 Sonora Hwy . . 9421
1 mile East of Oakdale

Poultry

OAKDALE POULTRY COMPANY
163 S Sierra St 6411

Poultry Supplies

POULTRY PRODUCERS OF CENTRAL
CALIF. 551 Yosemite Av . . 9043

Power Tools Rental

BERRY & LEWIS RENTALS
1116 McHenry Av . . . LA 3-8038
(See Display—Reverse of Dbl Truck)

Pumps

BEN BISHOP PUMP & ELECTRIC
SERVICE 322 N Yosemite Av 4621
RIVERBANK PUMP & ELECTRIC
SERVICE 3226 Santa Fe Av
Riverbank UN 9-2550

Pumps - Electric Service

BEN BISHOP PUMP & ELECTRIC
SERVICE 322 N Yosemite Av 4621

OAKDALE REFRIGERATION SERVICE

"Satisfactory Service — For Sure!"



COMPLETE REPAIRS & SERVICE . . .
Commercial & Domestic

Escalon-Oakdale Highway

Phone:

On Frontage Rd. ◆

P.O. Box 27

2854

OAKS REST HOME

Homelike Atmosphere



Ambulatory Men & Women Patients

● ● ● GOOD FOOD & CARE ● ● ●

● ● ● REASONABLE RATES ● ● ●

237 S. 4th Ave., Oakdale

Tel: 9897

MR. & MRS. H. E. MARKHAM - Owners

Pumps—Jet & Submersible

BEN BISHOP PUMP & ELECTRIC SERVICE 322 N Yosemite Av 4621

Pumps—Repairing

BEN BISHOP PUMP & ELECTRIC SERVICE 322 N Yosemite Av 4621
JACK McLAUGHLIN 214 East G St9820

Radios

OAKDALE ELECTRIC 140 N 3d Av ...8421-9288-9147
RADIO CITY ELECTRONICS & TV 117 East F St9290
RADIO ELECTRONICS 1226 H St Modesto ...LA 2-7678

Radio Service

ANDY'S RADIO SERVICE 139 N 1st Av8251

Radio Station

KFIV OAKDALE STUDIO 118 N Yosemite Av9535

Railroads

SANTA FE RAILWAY 530 S Yosemite Av4531
SIERRA RAILROAD CO 100 S Sierra Av2711
SOUTHERN PACIFIC COMPANY 100 S Sierra Av2711

Railroad Tickets

WALSER TRAVEL SERVICE Hotel Covell Modesto ..LA 3-0731

Ranches

CIRCLE BAR RANCH Ellenwood Rd8352

Ranges

OAKDALE ELECTRIC 140 N 3d Av ...8421-9288-9147

Real Estate

HARRY CIRCAOLO 514 McHenry Av Modesto LA 2-4045
ANTONE E DOTTA RANCHES 153 West St7076
McLAIN REALTY 927 East F St9865
O N WILKINSON 740 West Walnut Av9637

Reducing Equipment & Systems

STAUFFER HOME PLAN 1509 K St Modesto ...LA 4-1179

Reducing Salons

STAUFFER SYSTEM 1505 K St Modesto ...LA 2-9025

Refrigerators

I C REFRIGERATION SERVICE, INC 741 S 99 Hwy Modesto LA 2-1065 (See Display—Inside Back Cover)
OAKDALE ELECTRIC CO 140 N 3d Av ...8421-9288-9147

Refrigeration Service

OAKDALE REFRIGERATION SERVICE PO Bx 27 Escalon-Oakdale Hwy 2854

Refrigeration Service

I C REFRIGERATION SERVICE, INC 741 S 99 Hwy Modesto LA 2-1065 (See Display—Inside Back Cover)

Restaurants

LIVE OAK CAFE 112 N Yosemite Av ... 4221
NELSON'S RESTAURANT 110 East F St9737
OAKDALE CAFE 231 East F St9231
PUNKIN CENTER Sonora Hwy5759
TRIANGLE CAFE 658 N Yosemite Av6671

Restaurant Equipment

A P FISCHER INC 1310 9th St Modesto LA 4-6274 (See Display—Double Truck)

Rest Homes—

Ambulatory

THE OAK'S REST HOME 237 S 4th Av9897

Reweaving

WARD'S REWEAVING COMPANY 612 14th St Modesto ..LA 3-2500

Road Tire Service

BILL'S TIRE SERVICE 920 West F St Off 9323-Res 9097

Rugs & Carpets

TROY BUNCH The Seat Cover King 13th & H Sts Modesto LA 4-2604 (See Display—Backstrip)
HOUSE OF CARPETS 920 McHenry Av Modesto LA 3-5664

Sashes—Aluminum,

Steel, Louver & Casement

ACME GLASS CO 317 East E St9137
710 G St Modesto ...LA 3-5674 (See Display—Reverse of Inserts)

Saddles

OAKDALE STABLE & SADDLERY Sonora Hwy 9341
ROEN'S HITCHIN' POST Rt 2 Bx 971 Sonora Hwy at E, City Limits 8571

Salvage

OAKDALE SALVAGE 1129 Allen Av 9750

Savings & Loan

Associations

MODESTO BUILDING & LOAN CO 821 10th St Modesto ..LA 3-2648

Screens

VALLEY ASBESTOS CO 1601 McHenry Av Modesto LA 4-5188

Seat Covers—Auto,

Airplane, Boats & Trucks

TROY BUNCH The Seat Cover King 13th & H Sts Modesto LA 4-2604 (See Display—Backstrip)

Seed

TRYON'S NURSERY West F St Bus 9385 Res 9150

Brown Sheet Metal

"WE DO OUR METAL BEST"



Heating—Air Conditioning—Ventilating

- ★ WESTERN & FRAZER-JOHNSON FURNACES
- ★ YORK AIR CONDITIONERS
- ★ ARCTIC CIRCLE COOLERS

Rt. 3 Box 1208
1105 West F St.

OAKDALE
Phone 8021

Service Stations

CARL'S TEXACO SERVICE 368 East F St 9622
GREEN & MALLORY MOBILE SERV 103 West F St 5001
JERICOFF'S NORWALK SERVICE 217 West F St 7121
JERICOFF'S UNION SERVICE 347 East F St 4211
TROGDON'S SERVICE STATION Stockton Hwy 9692
W L WALTER'S SERVICE 207 East F St 9642

Sickroom Supplies

COMMUNITY AMBULANCE SERVICE 1614 H St Modesto ...LA 3-9191 (See Display—Professional Page)

Signs

C O D SIGNS 1118 Magnolia Av5821

Slip Covers

TROY BUNCH The Seat Cover King 13th & H Sts Modesto LA 4-2604

ON YOUR
ADVERTISING
DOLLAR ---

AIM
For the
BULL'S-EYE



**Sewage Treatment—
Equipment & Supplies**

DRY CHEMICAL PACIFIC 105 G St Modesto ...LA 3-8389

Sheet Metal

A P FISCHER INC 1310 9th St Modesto ..LA 4-6274 (See Display—Double Truck)
I C REFRIGERATION SERVICE, INC 741 S 99 Hwy Modesto LA 2-1065 (See Display—Inside Back Cover)

Sheet Metal Work

BROWN SHEET METAL 1105 West F St8021

Shoe Stores

CHICOU'S FAMILY SHOE STORE 223 East F St7921

Showcase Glass

ACME GLASS CO 317 East E St 9137
710 G St Modesto ...LA 3-5674 (See Display—Reverse of Inserts)

RECORD CITY ELECTRONICS & T. V. T. V. SALES & SERVICE



RECORDS — TAPE RECORDERS — RADIOS
Anything In The Electronic Field

☆ ALL WORK GUARANTEED ☆

Carrying ADMIRAL & PACKARD-BELL TV SETS

117 East F St., Oakdale

Phone 9290

Stables

OAKDALE STABLES & SADDLERY
Sonora Hwy9341

Stationery

GEORGE & HELEN GROHL'S
260 N 3d Av 9282
WALLACE'S STATIONERY & GIFTS
126 N Yosemite Av9822

Steamship Tickets

WALSER TRAVEL SERVICE
Hotel Covell Modesto ..LA 4-2604

Steel—Sales

OAKDALE IRON WORKS
123 N Sierra Av 8061

Steel Fabrication

A P FISCHER INC
1310 9th St Modesto LA 4-6274
(See Display—Double Truck)
KROELL'S PACKING SUPPLY
TOWT WIND MACHINES
No 99 Hwy Bx 990
TurlockME 4-5424
(See Display—Turlock Insert)

Store Fixtures

I C REFRIGERATION SERVICE, INC
741 S 99 Hwy Modesto LA 2-1065
(See Display—Inside Back Cover)

Store Fronts

ACME GLASS CO
317 East E St 9137
710 G St ModestoLA 3-5674
(See Display—Reverse of Inserts)
A P FISCHER INC
1310 9th St Modesto LA 4-6274
(See Display—Double Truck)

Store Planning

I C REFRIGERATION SERVICE, INC
741 S 99 Hwy Modesto LA 2-1065
(See Display—Inside Back Cover)

Tape Recorders

RADIO-ELECTRONICS
1226 H St ModestoLA 2-7678
RECORD CITY ELECTRONICS & TV
117 East F St9290

Taverns

CLOVER CLUB
Sonora-Oakdale Hwy9934
H-B COCKTAIL LOUNGE
401 East F St3141
PARKS CAFE
132 S Yosemite Av3431

Television—Antennas

RADIO ELECTRONICS
1226 H St ModestoLA 2-7678

Television—Sales & Service

BEATY TELEVISION SERVICE
521 East F St 4336
OAKDALE ELECTRIC
140 N 3d Av8421-9288-9147
RADIO CITY ELECTRONICS & TV
117 East F St9290
RADIO ELECTRONICS
1226 H St ModestoLA 2-7678

Theatre

OAKDALE THEATRE
F St 2963

Oakdale Stables & Saddlery

"CHILDREN'S PARADISE"



Home of Shetland Ponies

*Pony Rides For
Children . .*

All Sizes of Ponies for
All Sizes of Boys & Girls



HORSES BOARDED
& TRAINED

*Clarence & Grace Sykes
Owners*

RT. 2, BOX 948
SONORA HIGHWAY 1 MILE EAST OF CITY, OAKDALE

Tel: 9241

Tiles—Acoustical

VALLEY ASBESTOS CO
1601 McHenry Av
Modesto LA 4-5188

Tires

BILL'S TIRE SERVICE
920 West F St 9323
OAKDALE TRUCK TERMINAL
Rt 2 Bx 959 9451
OK RUBBER WELDERS
717 East F St 8261
DAVE SONDENO'S CLOVER PONTIAC
505 East F St 8621
TOW SERVICE GARAGE
531 Crows Landing Rd
Modesto LA 2-1865
(See Display—Inside Front Cover)

Tire Retreading & Recapping

BILL'S TIRE SERVICE
920 West F St 9323

Tire & Tube Repairs

BILL'S TIRE SERVICE
920 West F St 9323

Tires—Farm & Truck Service

BILL'S TIRE SERVICE
920 West F St 9323

Tires—Used

BILL'S TIRE SERVICE
920 West F St 9323

Tool & Die Making

TOWNSEND & COCHRAN
521 East E St 8011

Towing

TOW SERVICE GARAGE
531 Crows Landing Rd
Modesto LA 2-1855
(See Display—Inside Front Cover)

Tractors

CORNFORTH TRACTOR CO
1302 9th St Modesto LA 2-5225
(See Display—Agricultural Page)

Tractor Rentals

BERRY & LEWIS RENTALS
1116 McHenry Av
Modesto LA 3-8038
(See Display—Reverse Double Truck)

Trailer Parks

VAUGHN'S SHADY LANE TRAILER COURT
Hwy 120 at City Limit Sign 9462

Trailer Rentals

BERRY & LEWIS RENTALS
1116 McHenry Av
Modesto LA 3-8038
(See Display—Reverse of Dbl Truck)

Transportation

MODESTO TRANSFER CO
1403 9th St Modesto LA 2-4146
(See Display—Back Cover)

Trash Burners

CURRIERS OF MODESTO
1912 Sunrise Av LA 4-0738

Travel Service

WALSER TRAVEL SERVICE
Hotel Covell Modesto ..LA 3-0731

BILL'S TIRE SERVICE



EASY BUDGET PLAN

GUARANTEED TIRE RECAPPING

SEIBERLING TIRES - U. S. ROYAL TIRES

Phone 9323
Res. Phone 9097
920 West F St. OAKDALE If No Answer Call 2508



OAKDALE SHARPENING SERVICE



AUTHORIZED DEALER FOR
AUTO HOE GARDEN TOOLS
HOMELIGHT CHAIN SAW
RENTALS & SALES

- Saw Sharpening
- Lawn Mower Sharpening
- Stud Driver

Rt. 2 Box 970 Oakdale
East Sonora Hwy. & Johnson St.

Phone 9648
Res. 5752

VAUGHAN'S Shady Lane Trailer Court



MODERN FACILITIES
25 Spaces

● Motel Rooms ● Cabins ● Trailer Park
At The East City Limit On The Way To Yosemite

RT. 2, BOX 978
Highway 120, Oakdale, Calif.

Tel: 9462

OAKDALE TRUCK TERMINAL

COMPLETE AUTO & TRUCK SERVICE



Lubrications ♦ All Types Of Oil
TIRES . . . BATTERIES . . . ACCESSORIES

OPEN: 6 A.M. TO 10 P.M.
7 Days A Week

OWNED & OPERATED BY F. C. CHAFIN

1/2 Mile East Of Oakdale-Sonora H'wy.

Tel:9451

Trucking

HOAGLAND'S TRANSPORT SERVICE
INC
460 Bystrom Rd Modesto LA 3-1845
(See Display—Front Cover Strip)
LIVESTOCK TRANSPORTATION CO
Hwy 120 2984

Truck Terminals

OAKDALE TRUCK TERMINALS
Rt 2 Bx 9599451

Trucks—Fire

P E VAN PELT INC
G & Yosemite Av6311

Trucks—Used

DAVE SONDEÑO'S CLOVER PONTIAC
505 East F St 8621

Typewriters

McDOWELL'S
1116 G St ModestoLA 2-3140
WALLACE'S STATIONERY & GIFTS
126 N Yosemite Av9822

Upholstery

TROY BUNCH The Seat Cover King
13th & H Sts Modesto ..LA 4-2604
(See Display—Backstrip)
HAWLEY'S UPHOLSTERY
428 S 99 Hwy Modesto LA 2-4425

Vacuum Cleaners

OAKDALE ELECTRIC
140 N 3d Av8421-9288-9147

Variety Store:

JEAN'S VARIETY SHOP
208 East F St 2914

Ventilation

BROWN SHEET METAL
1105 West F St8021

Veterinary Hospitals

OAKDALE VETERINARY HOSPITAL
1025 West F St 7131

Vitamins

TURLOCK HEALTH FOOD & SUPPLY
CENTER
112 S Center Turlock ME 4-7765

Vulcanizing

BILL'S TIRE SERVICE
920 West F St 9323-9097

Wallpaper

ACME GLASS CO
317 East E St 9137
710 G St ModestoLA 3-5674
(See Display—Reverse of Inserts)
VALLEY PAINT COMPANY
1029 11th St Modesto LA 3-1809
(See Display—Modesto Insert)

Washers

RADIO ELECTRONICS
1226 H St Modesto ..LA 2-7678

Weather Stripping

VALLEY ASBESTOS CO
1601 McHenry Av
Modesto LA 4-5188

HOAGLAND'S TRANSPORT SERVICE INC.

STATE WIDE SERVICE



GENERAL
HAULING



Agriculture
Hauling



Cranes



460 Bystrom Road



MODESTO
P.O. Box 175



Flatbed
Trailers



Lo-Bed
Trailers
& Winches



Lift Trucks



LA 3-1845

OAKDALE IRON WORKS

WELDING — BLACKSMITHING



Sales Of Welding Supplies . . . Steel . . . Nuts & Bolts

★ PORTABLE WELDER ★

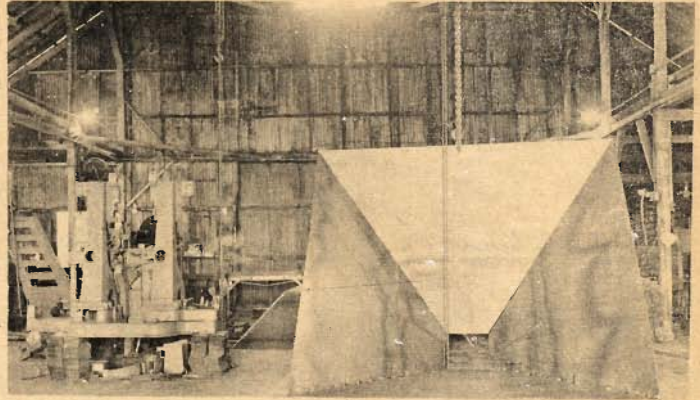
We'll Weld Anywhere!

123 No. Sierra Ave.

Tel: 8016

OAKDALE

Taylor & Sons BLACKSMITH & WELDER



ELECTRIC & ACETYLENE WELDING
MACHINE WORK
BLACK SMITHING

- BULK FEED TANKS
- CUSTOM TRAILERS & TRUCK BODIES

322 So. Yosemite Ave., Oakdale Ph. 3721

ROEN'S HITCHIN' POST

WESTERN & RANCH WEAR



Shirts WRANGLER & LEE Overalls

Men's - Women's & Children's Western Wear

☆ SADDLES & BRIDLES ☆ HYER & ACME BOOTS ☆

☆ GIFTS & NOVELTIES ☆

HOURS: 10 A.M. TO 6 P.M.
CLOSED SUNDAY & MONDAY

Rt. 2 Box 971, Oakdale
Sonora Hwy. at East City Limits

Tel: 8571

L. N. ISAAC

WHEEL ALIGNING SERVICE



WE SPECIALIZE IN:

FRAME STRAIGHTENING . . .
WHEEL BALANCING & STRAIGHTENING

DON WILLEY

P. O. Box 994
924 W. "F" St., Oakdale

Owner

Tel: 9309

Weed Spray Equipment

WAITE PAUL JOBBER SHELL
PRODUCTS N Sierra Av ... 3621

Welding

OAKDALE IRON WORKS
123 N Sierra Av 8016
TAYLOR & SONS
322 S Yosemite Av 3721
C H WILLIAMS & SON
632 11th St Modesto ... LA 3-8339

Welding Equipment & Portable Welders

OAKDALE IRON WORKS
123 N Sierra Av 8016

Western Wear

ROEN'S HITCHING POST
Sonora Hwy Rt 2 Bx 971 ... 8571

Wheel Alignment

ISAAC'S WHEEL ALIGNING SERV
924 West F St 9309
TOW SERVICE GARAGE
531 Crows Landing Rd
Modesto LA 2-1865
(See Display—Inside Front Cover)
WALTHER'S BODY WORKS
143 N 3d St 4021

Wheel Balancing

ISAAC'S WHEEL ALIGNING SERVICE
924 West F St 9309

Wind Machines

KROELL'S PACKING SUPPLY
No 99 Hwy Bx 990
Turlock ME 4-5424
(See Display—Turlock Insert)
TOWT WIND MACHINE
No 99 Hwy Bx 990
Turlock ME 4-5424
(See Display—Turlock Insert)

Window Glass

ACME GLASS COMPANY
317 East E St 9137
710 G St Modesto LA 3-5674
(See Display—Reverse of Inserts)

Windshields

ACME GLASS COMPANY
317 East E St 9137
710 G St Modesto LA 3-5674

Wine Vinegar

GIAMBANCO WINE VINEGAR PLANT
Claribel Rd 2953

Winery

OAKDALE WINERY
Escalon Rd 4707

Yard Goods

FLEMING FOR FABRICS
113 N 3d St 9864

Yard Goods—Plastic

TROY BUNCH The Seat Cover King
13th & H Sts Modesto LA 4-2604
(See Display—Backstrip)

**PATTERSON
GENERAL INFORMATION**

OFFICIALS

CITY OF PATTERSON
(Stanislaus County)
Incorporated December 24, 1919
General Law City. Population 1905.
Council meets 2d and 4th Tuesdays
of Month
Mayor, John H Evans
Councilman E H Freidel Sr
Councilman R L Christopherson
Councilman James G Terry
Councilman Mario Ielmini
City Clerk J E Nelson
City Attorney W H Logan
Police Chief Alex Kosich
Fire Chief O S Ball
City Treasurer J D Olson
Assessor J E Nelson
Bldg Inspector Ray Nelson
Recreational Director Dean Shafer
Tax Collector J E Nelson
Park Supt Manuel Silva
City Engineer W F Woolley
Street Supt'd Geo Robinson
Health Officer Alex Kosich
School Supt'd (Patterson Elem Sch
Dist) Willis T Boyarsky
Civilian Defense Dir John H Evans

CHURCHES

**PATTERSON & CROWS LANDING
CHURCHES AND THEIR SERVICES**

ASSEMBLY OF GOD CHURCH
6th and F Sts—TY 2-3641
Rev T E Fourt, pastor
SUNDAY SERVICES
9:45 a.m. Sunday School
11:00 a.m. Morning Worship
7:30 p.m. Evangelistic Meeting
7:30 p.m. Bible Study and Prayer
Wednesday

**FIRST PATTERSON SOUTHERN
BAPTIST**

423 E St—TY 2-5371
Rev R L Fox, pastor
SUNDAY SERVICES
9:45 a.m. Sunday School
11:00 a.m. Morning Worship
7:00 p.m. Training Union
8:00 p.m. Evangelistic Service
8:00 p.m. Prayer Meeting, Wed.

CATHOLIC CHURCH

529 I St—TY 2-9321
Rev J V Connors
SUNDAY SERVICES
8:00 a.m. Mass
10:30 a.m. Mass
7:30 p.m. Mass
9:15 a.m. Mass in Subsidiary
Chapel at Crows Landing
7:30 a.m. Mass, Mon thru Sat.

EVANGELICAL COVENANT CHURCH

Rev Edwin O Solie, pastor
SUNDAY SERVICES
9:45 a.m. Sunday School
11:00 a.m. Morning Worship
9:45 a.m. Sunday School
6:30 p.m. Jr and Sr Hi-Leagues
7:30 p.m. Gospel Service
7:30 p.m. Prayer Meeting Wed.

OUR SAVIOUR'S LUTHERAN CH

Walter Holtan, pastor
SUNDAY SERVICES
11:00 a.m. Morning Worship
9:45 a.m. Sunday School
7:30 p.m. Bible Study, Wed.

**FEDERATED CHURCH METHODIST
AND PRESBYTERIAN**

El Circulo—TY 2-8436
Rev Albert W Foster, pastor
5:00 p.m. Youth Fellowship Groups
6:30 p.m. Youth Fellowship
Groups

**CHURCH OF JESUS CHRIST OF
LATTER-DAY-SAINTS**

Crows Landing, Calif.
SUNDAY SERVICES
9:00 a.m. Priesthood Meeting
10:30 a.m. Sunday School

**PATTERSON
STREET GUIDE**

A ST
Begins at S 2nd St, running SW,
ends at 3rd St.
B ST
Begins at S 2nd St, running SW.
Intersected by S 3rd St, S 4th
St; ends at 5th St.

C ST
Begins at S 2nd St, running SW.
Intersected by S 3rd St, S 4th
St, S 5th St, S 6th St; ends at
S 7th St.
D ST
Begins at S 2nd St, running SW.
Intersected by S 3rd St, S 4th St,
S 5th St, S 6th St; ends at S
7th St.
E ST
Begins at S 2nd St, running SW.
Intersected by S 3rd St, S 4th
St, S 5th St, S 6th St, S 7th St,
8th St, 9th St; ends at Sperry
Rd.
F ST
Begins at El Circulo and S 4th
running SW. Intersected by S 5th
St, S 6th St, S 7th St; to dead
end.
H ST
Begins at El Circulo and N 4th
St, running SW. Intersected by
N 5th St, N 6th St, N 7th; ends
at 9th St.
I ST
Begins at N 2nd St, running SW.
Intersected by N 3rd St, N 4th
St, N 5th St, N 6th St; ends at
N 7th St.
J ST
Begins at N 2nd St, running SW.
Intersected by 3rd St, N 4th St,
N 5th St, N 6th St, Salado Av,
ends at N 7th St.
K ST
Begins at N 2nd St, running SW.
Intersected by N 3rd St, N 4th
St, N 5th St, N 6th St; ends at
N 7th St.
L ST
Begins at N 2nd St, running SW.
Intersected by N 3rd St, N 4th
St, N 5th St, N 6th St, N 7th St;
ends at Salado Av.
M ST
Begins at N 2nd St, running W,
then SW. Intersected by N 3rd St,
N 4th St, N 5th St, N 6th St, N
7th St; ends at Salado Av.
FIRST AV N
Begins at Las Palmas Av, run-
ning NW. Intersected by Walnut
Av, continues into County.

FIRST AV S
Begins at Las Palmas Av, run-
ning SE. Intersected by E St;
ends at Sperry Rd.
2 ND ST, N
Begins at Las Palmas Av, run-
ning NW. Intersected by El Cir-
culo, I St, J St, L St, M St, N
Mead Wy; continues into county.
2ND ST S
Begins at Las Palmas Av, running
SE. Intersected by El Circulo, E
St, D St, C St, B St, A St; ends
at Sperry Rd.
3RD ST, N
Begins at Plaza, running NW. In-
tersected by El Circulo, I St, J St,
K St, L St, M St, N Mead Way;
to dead end.
3RD ST, S
Begins at Plaza, running SE. In-
tersected by E St, D St, C St,
B St, A St; ends at Sperry Rd.
4TH ST, N
Begins at El Circulo and H St,
running NW. Intersected by I St,
J St, K St, L St, M St, N Mead
Way; to dead end.
4TH ST, S
Begins at El Circulo and Del Pu-
erto Av, running SE. Intersected by
E St, D St, C St, B St; ends
at Sperry Rd.
5TH ST, N
Begins at Las Palmas Av, running
NW. Intersected by H St, I St,
J St, L St; ends at M St.
5TH ST, S
Begins at Las Palmas Av, running
SE. Intersected by F St, E St,
Del Puerto Av, D St, C St, B St;
ends at Sperry Rd.
6TH ST N
Begins at Las Palmas Av, run-
ning NW. Intersected by H St, I
St, J St, Salado Av, K St, L St,
ends at M St.
6TH ST, S
Begins at Las Palmas Av, running
SE. Intersected by F St, E St,
D St, Del Puerto Av, C St; ends
at Sperry Rd.
7TH ST, N
Begins at Las Palmas Av, run-
ning NW. Intersected by H St,
I St, J St, Salado Av, K St, L St;
ends at M St.