

# HUGHSON GENERAL INFORMATION

## CHURCHES

**HUGHSON CHURCHES**  
**ASSEMBLY OF GOD**  
 HUGHSON ASSEMBLY OF GOD  
 Rev C R McQueary, pastor  
**SUNDAY SERVICES**  
 9:45 a.m. Sunday School  
 11:00 a.m. Worship  
 7:30 p.m. Worship  
 7:30 p.m. Evening Service, Wednesday and Friday  
**BAPTIST**  
 HUGHSON FREEWILL BAPTIST CHURCH  
 Rev Billy G Kelton, pastor  
**SUNDAY SERVICES**  
 9:45 a.m. Sunday School  
 11:00 a.m. Morning Service  
 7:30 p.m. Evening Service  
 7:30 p.m. Prayer Meeting Service,

Wednesday  
 7:30 p.m. Service, Saturday  
**HUGHSON MISSIONARY BAPTIST CHURCH**  
**SUNDAY SERVICES**  
 9:45 a.m. Sunday School  
 11:00 a.m. Worship  
 7:30 p.m. Evening Worship  
 7:30 p.m. Service Wednesday  
**CATHOLIC**  
**HUGHSON SAINT ANTHONY'S CHURCH**  
 Father Hugh McKenna, pastor  
**SUNDAY SERVICES**  
 9:00 a.m. Masses  
 8:00 a.m. Masses, Holy Days  
 7:00 a.m. Masses, Week Days  
 4:30-5:30 p.m. and after devotions, Confessions, Saturdays, Eves of Holy Days and First Fridays  
 8:00 p.m. Our Lady of Fatima Devotions, Saturday

Baptism by Appointment  
**METHODIST**  
**HUGHSON METHODIST CHURCH**  
 Thomas M Robertson, minister

**SUNDAY SERVICES**  
 9:45 a.m. Sunday School  
 11:00 a.m. Worship

**NAZARENE**  
**HUGHSON CHURCH OF THE NAZARENE**  
 Rev Robert Pettam, pastor  
**SUNDAY SERVICES**

9:45 a.m. Sunday School  
 11:00 a.m. Worship  
 7:30 p.m. Nazarene Young People's Society  
 7:45 p.m. Evangelistic Service  
 7:45 p.m. Midweek Service

**PENTECOSTAL**  
**HUGHSON PENTECOSTAL CHURCH OF GOD**  
 Rev Andrew W Rahn, minister  
**SUNDAY SERVICES**  
 9:45 a.m. Sunday School  
 11:00 a.m. Worship  
 7:30 p.m. Worship Wednesday

## ORGANIZATIONS

**HUGHSON FARM CENTER**  
 Meets 1st Monday Hughson Hi Sch  
**LIONS CLUB**  
 Meets 1st and 3d Thursdays 7:00 p.m. Dinner Meeting at Hughson High School  
**TWENTIETH CENTURY CLUB**  
 Meets 3d Monday 8:00 p.m. at homes of members

# HUGHSON CLASSIFIED D I R E C T O R Y

## Adding Machines

McDOWELL'S  
 1116 G St, Modesto . . . .LA 2-3140

## Agricultural Implements

CORNFORH TRACTOR CO  
 1302 - 9th St, Modesto. LA 2-5225  
 (See Display - Agricultural Page)

## Air Compressors

**BENSON & ZIMMERMAN**  
 11th & H Sts, Modesto. LA 4-3131  
 (See Page Facing Inside Back Cover)  
**I C REFRIGERATION SERVICE, INC**  
 741 S 99 Hwy, Modesto. LA 2-1065  
 (See Display - Inside Back Cover)

## Air Compressors—

### Rental

**BERRY & LEWIS RENTALS**  
 1116 McHenry Av, Mod. LA 3-8038  
 (See Display - Reverse Double Truck)

## Air Conditioning - Sales & Service

**A P FISCHER**  
 1310 - 9th St, Modesto. LA 4-6274  
 (See Display - Double Truck)  
**I C REFRIGERATION SERVICE, INC**  
 741 S 99 Hwy, Modesto. LA 2-1065  
 (See Display - Inside Back Cover)  
**VALLEY ASBESTOS CO**  
 1601 McHenry Av, Mod .LA 4-5188

## Airline Agencies

**WALSER TRAVEL SERVICE**  
 Hotel Covell, Modesto. LA 3-0731

## Ambulance Service

**COMMUNITY AMBULANCE SERVICE**  
 1614 H St, Modesto . LA 3-9191  
 (See Display - Professional Page)

## Auto Body & Fender Repair

**TOW SERVICE GARAGE**  
 531 Crows Lndng, Mod. LA 2-1865  
 (See Display - Inside Front Cover)

## Auto Convertible Tops

**TROY BUNCH, The Seal Cover King**  
 13th & H Sts, Modesto. LA 4-2604  
 (See Display Backstrip & Postcard)

## Auto - Electric

**TOW SERVICE GARAGE**  
 531 Crows Lndng, Mod. LA 2-1865  
 (See Display - Inside Front Cover)

## Auto Filters

**FISHER'S SERVICE**  
 Tully Rd & Pine St . . .TU 3-2412

## Auto Glass

**ACME GLASS COMPANY**  
 710 G St, Modesto . . . .LA 3-5674  
 (See Display - Reverse of Inserts)

## Auto Painting

**BENSON & ZIMMERMAN**  
 11th & H Sts, Modesto. LA 4-3131  
 (See Page Facing Inside Back Cover)  
**TOW SERVICE GARAGE**  
 531 Crows Lndng, Mod. LA 2-1865  
 (See Display - Inside Frnt Cover)  
**C H WILLIAMS & SON**  
 632 - 11th St, Modesto. LA 3-8339

## Auto Parts - New

**BENSON & ZIMMERMAN**  
 11th & H Sts, Modesto. LA 4-3131  
 (See Page Facing Inside Back Cover)  
**LEWIS AUTO PARTS**  
 Whitmore & Charles St. TU 3-4835  
**MARTELLA'S AUTOMOTIVE SERVICE**  
 167 Hughson Av . . . . .TU 3-4974

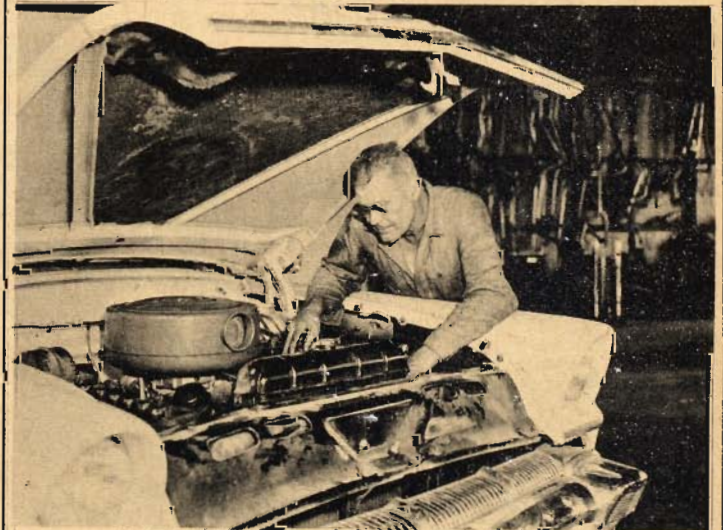
## Auto Radiator Work

**C H WILLIAMS & SON**  
 632 - 11th St, Mod. LA 3-8339

## Auto Repairs

**MARTELLA'S AUTOMOTIVE SERVICE**  
 167 Hughson Av . . . . .TU 3-4974

# SID BRYANT GARAGE



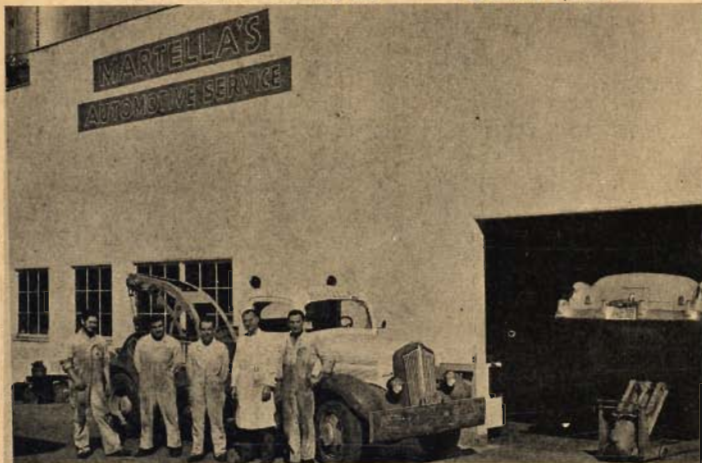
## GENERAL AUTO REPAIR

- ☆ CYLINDER REBORING
- ☆ WHEEL ALIGNING

*All Work Guaranteed*

**312 CHARLES ST., HUGHSON TU 3-4491**

# MARTELLA'S AUTOMOTIVE SERVICE



◆ AUTO REPAIRS ◆ TRUCK SERVICING



**AAA  
TOW SERVICE**

*Full Line Of Major Auto Parts*

P. O. Box 42  
167 HUGHSON AVE.

**TU 3-4974**

# Hughson Beauty Shop



**PERMANENTS . . . LATEST HAIR STYLING**

**COSMETICS:**

● REVLON ● HAZEL BISHOP ● RAYETTE

*Children's Work Our Specialty*

Closed Monday

ELNER SPILLMAN

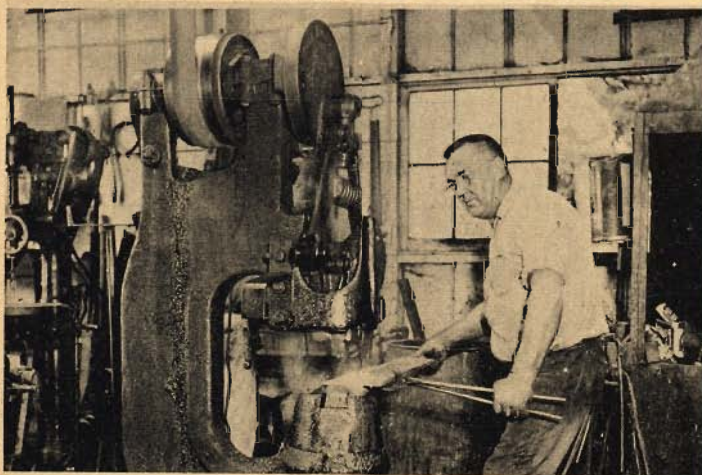
ANITA MOORE

Serving You Is Our Pleasure

432 Hughson Ave.

**TU 3-4707**

# George Nielsen BLACKSMITH & WELDING



**HYDRAULIC GRAPE LOADERS  
IRRIGATION VALVES**

*Originator of Pallet Trailers*

P. O. BOX 677 HUGHSON, CALIF.

109 CHARLES ST.

**TU 3-4325**

## Auto Repairs

MARTIN'S FLYING A SERVICE  
350 Hughson Av . . . . . TU 3-4855  
SIDNEY BRYANT GARAGE  
312 Charles St . . . . . TU 3-4491

STARNS AUTOMOTIVE REPAIR  
3rd St . . . . . TU 3-4421  
LOUIS WALL GARAGE  
East Whitmore Av . . . . . TU 3-2120

## Auto Spring Mfg

C H WILLIAMS & SON  
632 11th St . . . . . LA 3-8339

## Auto Towing

TOW SERVICE GARAGE  
531 Crows Landing, Mod. LA 2-1865  
(See Display - Inside Front Cover)

## Auto Upholstery

TROY BUNCH, The Seat Cover King  
13th & H Sts, Modesto. LA 4-2604  
(See Display - Backstrip)

## Auto Wash

SUPER SPEED AUTO LAUNDRY  
4th & H Sts, Modesto. LA 3-6300  
THREE MINUTE CAR WASH  
McHenry & Morris, Mod. LA 3-7856

## Auto Washing &

## Polishing

FISHER'S SERVICE  
Tully Rd & Pine . . . . . TU 3-2412

## Awnings & Awnings-

## Aluminum

VALLEY ASBESTOS CO  
1601 McHenry Av, Mod. LA 4-5188

## Bakeries

HUGHSON BAKERY  
379 Hughson Av . . . . . TU 3-4741

## Banking

MODESTO BLDG & LOAN ASSN  
821 - 10th St, Modesto. LA 3-2648

## Banks

CENTRAL VALLEY BANK  
336 Hughson Av . . . . . TU 3-4434

## Barbecue Equipment

CURRIERS OF MODESTO -  
521 Santa Rita Av, Mod. LA 4-0738

## Batteries

BENSON & ZIMMERMAN  
11th & H Sts, Modesto. LA 4-3131  
(See Page Facing Inside Back Cover)  
FISHER'S SERVICE  
Tully Rd & Pine St . . . . . TU 3-2412  
MARTIN'S FLYING A SERVICE  
350 Hughson Av . . . . . TU 3-4855  
TOW SERVICE GARAGE  
531 Crows Landing, Mod. LA 2-1865  
(See Display - Inside Front Cover)

## Beauty Shops

DOROTHY'S BEAUTY SHOP  
313 Hughson Av . . . . . TU 3-2194  
FASHION'S FINEST SALON of Beauty  
429 McHenry Av, Mod. LA 4-1409  
HUGHSON BEAUTY SHOP  
432 Hughson Av . . . . . TU 3-4707

## Bedspreads

TROY BUNCH, The Seat Cover King  
13th & H Sts, Modesto. LA 4-2604

## Blacksmiths

GEORGE NEILSEN Blacksmith & Weld  
109 Charles St . . . . . TU 3-4325

**Blacksmithing**

C H WILLIAMS & SON  
632 - 11th St, Modesto. LA 3-8339

**Brake Work**

TOW SERVICE GARAGE  
531 Crows Landing, Mod. LA 2-1865  
(See Display - Inside Front Cover)

**Building & Loan Assn**

MODESTO BUILDING & LOAN CO  
821 - 10th St, Modesto. LA 3-2648

**Business Opportunity Brokers**

HARRY CIRAOLLO  
514 McHenry Av, Mod. LA 2-4050

**Canners**

CALIFORNIA PACKING CORP  
Santa Fe Av ..... TU 3-2172  
SHUCKL & COMPANY, INC  
Santa Fe Av ..... TU 3-4343  
THORNTON CANNING CO  
Santa Fe Av ..... TU 3-4793

**Carpets - Cleaning & Repairing**

HOUSE OF CARPETS  
920 McHenry Av, Mod. LA 3-5664

**Carports**

VALLEY ASBESTOS CO  
1601 McHenry Av, Mod. LA 4-5188

**Chain Saw Rentals**

BERRY & LEWIS RENTALS  
1116 McHenry Av, Mod. LA 3-8038  
(See Display - Reverse Double Truck)

**Chemicals**

DRY CHEMICAL PACIFIC  
105 G St, Modesto LA 3-8389

**Cleaners**

HUGHSON CLEANERS  
436 Hughson Av ..... TU 3-4345

**Concrete-Ready Mixed**

HUGHSON GRAVEL PLANT  
P O Box 35 ..... TU 3-4786

**Contractors - Awning**

VALLEY ASBESTOS CO  
1601 McHenry Av, Mod. LA 4-5188

**Contractors - General**

SCRANTON & QUALLE  
P O Box 311 ..... TU 3-2206

**Cosmetics**

HUGHSON BEAUTY SHOP  
432 Hughson Av ..... TU 3-4707

**Crating**

MODESTO TRANSFER CO  
1404 - 9th St, Modesto. LA 2-4146  
(See Display - Back Cover)

**Curtains**

TROY BUNCH, Beauti Pleat Draperies  
1215 H St, Modesto LA 2-1472  
(See Display - Backstrip)

**Cylinder Reboring**

SIDNEY BRYANT GARAGE  
312 Charles St ..... TU 3-4491

**Doors - Aluminum, Steel, Sliding, Shower**

ACME GLASS COMPANY  
710 G St, Modesto LA 3-5674  
(See Display - Reverse Side Inserts)

**Doors - Folding, Wooden & Plastic**

VALLEY ASBESTOS COMPANY  
1601 McHenry Av, Mod. LA 4-5188

**Draperies**

TROY BUNCH, Beauti Pleat Draperies  
1215 H St, Modesto LA 2-1472  
(See Display - Backstrip)  
HAWLEYS UPHOL & DRAPERIES  
428 S 99 Hwy, Mod. LA 2-4425

**Dresses**

KITTY'S DRESS SHOP  
363 Hughson Av ..... TU 3-4767

**Drug Stores**

COAST DRUG STORES, INC  
McHenry Village, Mod. LA 3-1723  
(See Display - Reverse Title Page)  
HUGHSON PHARMACY  
371 Hughson Av ..... TU 3-2072

**Dryers**

RADIO ELECTRONICS  
1226 H St, Modesto LA 2-7678

**Electrical Electronics**

RADIO ELECTRONICS  
1226 H St, Modesto LA 2-7678

**Electrical Contractors - Industrial & Residential**

WALTHER ELECTRIC COMPANY  
225 N 3rd ..... TU 3-4383

**Electrical Wiring**

WALTHER ELECTRIC COMPANY  
225 N 3rd ..... TU 3-4383

**Ennz Products**

DRY CHEMICAL PACIFIC  
105 G St, Modesto LA 3-8389

**Equipment Rentals**

BERRY & LEWIS RENTALS  
1116 McHenry Av, Mod. LA 3-8038  
(See Display - Reverse Double Truck)

**Farm Equipment**

GEORGE NEILSON Blacksmith & Weld  
109 Charles St ..... TU 3-4325  
KROELLS PACKING SUPPLY  
TOWT WIND MACHINE, N 99 Hwy  
Box 990, Turlock ME 4-5425  
(See Display - Turlock Insert)

**Farm Implements - Sales & Service**

CORNFORTH TRACTOR CO  
1302 - 9th St, Modesto. LA 2-5225  
(See Display - Agricultural Page)

**Farm Machinery & Farm Tires**

CORNFORTH TRACTOR CO  
1302 - 9th St, Modesto. LA 2-5225  
(See Display - Agricultural Page)

**Farm Supplies**

CENTRAL VALLEY SUPPLY  
Santa Fe Av ..... TU 3-2145

**SCRANTON & QUALLE**  
GENERAL CONTRACTORS



*Complete Planning & Drafting For*


REMODELING . . . NEW HOMES

LIGHT COMMERCIAL BUILDING

D. E. Scranton  
TU 3-4415


Main Office  
TU 3-2206

C. N. Qualle  
TU 3-2205



**WALTHER ELECTRIC CO.**  
HUGHSON, CALIF.

FOR INDUSTRY  
STORES  
SCHOOLS  
PLANNED LIGHTING  
ELECTRICAL INSTALLATION  
AND MAINTENANCE  
FOR THE HOME  
NEW WIRING FROM  
ENGINEERED BLUEPRINTS  
ADEQUATE YET  
REASONABLY PRICED  
REWIRING OF OLDER  
HOUSES FOR ELECTRIC  
HEAT, AIR CONDITIONING



**ELECTRICAL CONTRACTORS**  
225 THIRD STREET.....  
TELEPHONE TUXEDO 3-4383

**Fibreglass**

VALLEY ASBESTOS CO  
1601 McHenry Av, Mod. LA 4-5188

**Floor Coverings**

HOUSE OF CARPETS  
920 McHenry Av, Mod. LA 3-5664

**Frost Protection**

KROELLS PACKING SUPPLY  
TOWT WIND MACHINE, N 99 Hwy,  
Box 990, Turlock ME 4-5425  
(See Display - Turlock Insert)

**Frozen Food Lockers -  
Rental**

HUGHSON LOCKER SERVICE  
208 3rd St TU 3-2254

**Fruits**

HAWAIIAN PINEAPPLE CO, LTD  
Swanson Rd TU 3-2102

**Furniture - Foam  
Rubber**

TROY BUNCH, The Seat Cover King  
13th & H Sts, Modesto LA 4-2604  
(See Display - Backstrip)

**Garages**

HENRY MANN  
3rd St TU 3-2126  
JOHNSTON'S GARAGE  
3rd St TU 3-4368  
SIDNEY BRYANT GARAGE  
312 Charles St TU 3-4491

**TOW SERVICE GARAGE**

531 Crows Landing, Mod. LA 2-1865  
(See Display - In Front Cover)  
C H WILLIAMS & SON  
632 - 11th St, Modesto. LA 3-8339

**Garage & Service  
Station Equipment**

BENSON & ZIMMERMAN  
11th & H Sts, Modesto. LA 4-3131  
(See Page Facing Inside Back Cover)

**Garden & Eqpt Rental**

BERRY & LEWIS RENTALS  
1116 McHenry Av, Mod. LA 3-8038  
(See Display - Reverse Double Truck)

**Gifts - Domestic &  
Imported, Ret & Whlse**

TURLOCK HEALTH FOOD & SUPPLY  
112 S Center St, Turlock. ME 4-7765

**Gifts**

HUGHSON PLUMBING & SUPPLY CO  
328 Hughson Av TU 3-2223

**Glass**

ACME GLASS COMPANY  
710 G St, Modesto LA 3-5674  
(See Display - Reverse of Inserts)

**Glazing - Contractors**

ACME GLASS COMPANY  
710 G St, Modesto LA 3-5674  
(See Display - Reverse of Insert)

**Hardware**

HUGHSON HARDWARE COMPANY  
Hughson Av TU 3-2183

**Hay Balers & Tools**

CORNFORTH TRACTOR CO  
1302 - 9th St, Modesto. LA 2-5225  
(See Display - Agricultural Page)

**Health Food**

TURLOCK HEALTH FOOD & SUPPLY  
112 S Center, Turlock ME 4-7765

**Heaters - Orchard**

KROELLS PACKING SUPPLY  
TOWT WIND MACHINE, N 99 Hwy  
Box 990, Turlock ME 4-5425

**Heating**

A P FISCHER, INC  
1310 - 9th St, Modesto. LA 4-6274  
(See Display - Double Truck)  
I C REFRIGERATION SERVICE, INC  
741 S 99 Hwy, Modesto. LA 2-1065  
(See Display - Inside Back Cover)

**High Fidelity Systems**

RADIO ELECTRONICS  
1226 H St, Modesto LA 2-7678

**Hospital Equipment**

COMMUNITY AMBULANCE SERVICE  
1614 H St, Modesto LA 3-9191  
(See Display - Professional Page)

**House Movers**

AMERICAN HOUSE MOVERS  
2112 Blue Gum Av, Mod, LA 2-1288

**Incinerators**

CURRIERS OF MODESTO  
1912 Sunrise Av, Mod. LA 4-0738

**Insulation**

VALLEY ASBESTOS COMPANY  
1601 McHenry Av, Mod. LA 4-5188

**Insurance**

CAL-FARM INSURANCE CO  
1405 - 8th St, Modesto. LA 2-7278  
HARRY CIRAOLLO  
514 McHenry Av, Mod. LA 2-4045  
JACK LeTOURNEAU  
400 Hughson Av, Mod. TU 3-2163

**Jewelers**

WILLIAM L POWELL  
324 Hughson Av TU 3-2285

**Lighting Fixtures**

WALTHER ELECTRIC COMPANY  
225 N 3rd St TU 3-4383

**Lumber**

UNITED LUMBER YARDS  
Tully Blvd TU 3-4312

**Markets**

BETTERWAY MARKET  
Hughson Av TU 3-2021  
COX'S MARKET  
Santa Fe Av & Geer Rd. TU 3-4887  
HUGHSON FOOD MART  
387 Hughson Av TU 3-2361  
KOZY KORNER GROCERY  
Whitmore Av & Tully TU 3-2085  
SANDERS MARKET  
Santa Fe Av TU 3-2204  
SAV-MOR MARKET  
420 Hughson Av TU 3-2141  
WADE'S CASH MARKET  
601 Hughson Av TU 3-4742

**Mirrors**

ACME GLASS COMPANY  
710 G St, Modesto LA 3-5674  
(See Display - Reverse of Inserts)

**Motor Rebuilding**

TOW SERVICE GARAGE  
531 Crows Landing, Mod. LA 2-1865  
(See Display - Inside Front Cover)

**Motor Tuneups**

MARTIN'S FLYING A SERVICE  
350 Hughson Av TU 3-4855  
TOW SERVICE GARAGE  
531 Crows Landing, Mod. LA 2-1865  
(See Display - Inside Front Cover)

**Moving & Storage**

MODESTO TRANSFER COMPANY  
1403 - 9th St, Modesto. LA 2-4146  
(See Display - Back Cover)

**Oils - Lubricating**

FISHER'S SERVICE  
Tully Rd & Pine St TU 3-2412  
MARTIN'S FLYING A SERVICE  
350 Hughson Av TU 3-4855

**Orchard & Dairy**

**Farm Property**

J E STARN - REAL ESTATE  
367 Hughson TU 3-4842

**Outboard Motor**

**Rentals**

BERRY & LEWIS RENTALS  
1116 McHenry Av, Mod. LA 3-8038  
(See Display - Reverse Double Truck)

**Oxygen - Equipped**

COMMUNITY AMBULANCE SERVICE  
1614 H St, Modesto LA 3-9191  
(See Display - Professional Page)

**HUGHSON PLUMBING  
& Supply Co.**

PLUMBING SUPPLIES  
BOYSEN PAINTS  
HUNTING & FISHING SUPPLIES  
PUMPS & PRESSURE SYSTEMS  
GIFT WARE

328 HUGHSON AVE TU 3-2223

*Loyd & Alice Cronkite, Owners*

**J. E. STARN**

*Real Estate Broker:*

FARMS ● RANCHES ● ORCHARDS ● DAIRY FARMS  
& COUNTRY HOMES



*Located In This Area Over 35 Years*

RANCH OFFICE: ROEDING & TULLY TU 3-2162

HUGHSON Office: 367 Hughson Ave. TU 3-4842

**Oxygen - Medical & Industrial**

BEHNSON & ZIMMERMAN  
11th & H Sts, Modesto...LA 4-3131  
(See Display - Page Facing Inside Back Cover)

**Packaging & Packing**

MODESTO TRANSFER CO  
1403 - 9th St, Mod...LA 2-4146  
(See Display - Back Cover)

**Paints**

ACME GLASS COMPANY  
710 G St, Modesto...LA 3-5674  
(See Display - Reverse of Inserts)  
HUGHSON PLUMBING & SUPPLY CO  
328 Hughson Av...TU 3-2223  
VALLEY PAINT COMPANY  
1020 - 11th St, Mod...LA 3-1809  
(See Display - Modesto Insert)

**Painter Supplies**

VALLEY PAINT COMPANY  
1029 - 11th St, Mod...LA 3-1809  
(See Display - Modesto Insert)

**Pallet Trailers - Manufacturing**

GEORGE PEILSON Blacksmith & Weld  
109 Charles St...TU 3-4325

**Phonographs**

RADIO ELECTRONICS  
1226 H St, Modesto...LA 2-7678

**Plate Glass**

ACME GLASS COMPANY  
710 G St, Modesto...LA 3-5674  
(See Display - Reverse Inserts)

**Plumbing Supplies**

HUGHSON PLUMBING & SUPPLY CO  
328 Hughson Av...TU 3-2223

**Power Tools Rental**

BERRY & LEWIS RENTALS  
1116 McHenry...LA 3-8038  
(See Display - Reverse Double Truck)

**Radios**

RADIO ELECTRONICS  
1226 H St Modesto... LA 2-7678

**Ranches**

CARSON RANCH  
Aldrich Rd...TU 3-4365  
LOW RANCH  
Aldrich Rd...TU 3-2278  
SYLVANIA RANCH  
Hatch Rd...TU 3-4820

**Real Estate**

HARRY CIRAOLO  
514 McHenry Av Modesto LA 2-4045  
J W MORRIS  
320 Hughson Av...TU 3-4881  
J E STARN REAL ESTATE  
367 Hughson Av...TU 3-4842  
Ranch Office  
Roeding & Tully...TU 3-2162

**Reducing Equipment & Systems**

STAUFFER HOME PLAN  
1505 K St Modesto...LA 2-9025

**Reducing Salons**

STAUFFER HOME PLAN  
1505 K St Modesto...LA 2-9025

**Refrigerators**

I C REFRIGERATION SERVICE, INC  
741 So 99 Hwy Modesto LA 2-1065  
(See Display—Inside Back Cover)

**Refrigeration Service**

I C REFRIGERATION SERVICE, INC  
741 So 99 Hwy Modesto LA 2-1065  
(See Display—Inside Back Cover)

**Restaurants**

HATTIES CAFE  
Locust & Tully Rd...TU 3-4982  
HOOPER'S CAFE  
611 Hughson Av...TU 3-4724  
SCRATCH'S DRIVE IN  
409 Hughson Av...TU 3-2247  
M & M RESTAURANT  
225 Main St...TU 3-2434

**Restaurant Equipment**

A P FISCHER INC  
1310 9th St Modesto...LA 4-6274  
(See Display—Double Truck)

**Reweaving**

WARD'S REWEAVING COMPANY  
612 14th St Modesto...LA 3-2500

**Rock**

HUGHSON GRAVEL PLANT  
P O Box 35...TU 3-4786  
STANDARD MATERIALS ROCK PLANT  
Low Road...TU 3-4822

**Rugs & Carpets**

TROY BUNCH THE SEAT COVER KING  
12th & H Sts Modesto...LA 4-2604  
See Display—Backstrip)  
HOUSE OF CARPETS  
920 McHenry Av,  
Modesto...LA3-5664

**Sand & Gravel Plant**

HUGHSON GRAVEL PLANT  
P O Box 35...TU 3-4786

**Sashes**

ACME GLASS CO  
710 G St Modesto...LA 3-5674  
(See Display—Reverse of Inserts)

**Savings & Loan Assns**

MODESTO BUILDING & LOAN CO  
821 10th St Modesto...LA 3-2648

**Screens**

VALLEY ASBESTOS CO  
1601 McHenry Av  
Modesto...LA 4-5188

**Seat Covers - Auto, Airplane, Boats, Trucks**

TROY BUNCH  
(The Seat Cover King)  
13th & H St Modesto...LA 4-2604  
(See Display—Backstrip)

**Service Stations**

BOB'S UNION SERVICE  
Hughson & Santa Fe Av TU 3-2212  
FISHER'S SERVICE  
Tully Rd & Pine St...TU 3-2412  
HUGHSON SHELL STATION  
200 3rd St...TU 3-4394  
JOE'S RICHFIELD SERVICE  
3rd & Santa Fe Av...TU 3-2007  
L & L SERVICE STATION  
Charles & Whitmore Av TU 3-2036

**HUGHSON GRAVEL PLANT**

Same Location For 20 Years



• GRAVEL • ROCK • SAND  
• CONCRETE MIX

North End of Greer Rd. TU 3-4786  
ED KLEIM, Owner

**FISHER'S SERVICE**



Car Washing — Lubrications

• Tires • Batteries

We Sell & Service

FRANTZ Miracle Oil Filters

Tully Road & Pine

TU 3-2412

L. G. FISHER - Owner

**MARTIN'S SERVICE**



*We Give Thrifty Green Stamps*



**COMPLETE LINE OF TIRES & BATTERIES**

- Minor Motor Jobs
- Lubrications
- Oil Changes

SPORTS CARS OUR SPECIALTY  
**350 Hughson Ave. TU 3-4855**  
**HUGHSON**

LOCAL NEWS  
 SOCIETY  
 WOMEN'S FEATURES

*are carried each week*

*in the*

**MODESTO TRIBUNE**

Call LAMBERT  
**3 - 8 3 7 8**

*and order your  
 subscription today*

**Service Stations**

MARTIN'S FLYING A SERVICE  
 350 Hughson Av .....TU 3-4855  
 THREE POINT SERVICE  
 Santa Fe Hughson Av TU 3-9943

**Septic Tanks**

DRY CHEMICAL PACIFIC  
 105 G St Modesto ....LA 3-8389

**Sewage Treatment  
 Equipment & Supplies**

DRY CHEMICAL PACIFIC  
 105 G St Modesto ....LA 3-8389

**Sheet Metal**

A P FISCHER INC  
 1310 9th St Modesto ..LA 4-6274  
 (See Display—Double Truck)  
 I C REFRIGERATION SERVICE, INC  
 741 So Hwy Modesto ..LA 2-1065  
 (See Display—Inside Back Cover)

**Showcase Glass**

ACME GLASS CO  
 710 G St Modesto ....LA 3-5674  
 (See Display—Reverse of Inserts)

**Slip Covers**

TROY BUNCH  
 (The Seat Cover King)  
 13th & H Sts Modesto LA 4-2604  
 (See Display—Backstrip)

**Sporting Goods**

HUGHSON PLUMBING & SUPPLY CO  
 328 Hughson Av ..... TU 3-2223

**Steamship Tickets**

WALSER TRAVEL SERVICE  
 Hotel Covell Modesto ...LA 3-0731

**Steel Fabrication**

A P FISCHER INC  
 1310 9th St Modesto ..LA 4-6274  
 (See Display—Double Truck)  
 KROELLS PACKING SUPPLY  
 TOWT WIND MACHINES  
 No 99 Hwy Box 990  
 Turlock ..... ME 4-5425

**Store Fixtures**

I C REFRIGERATION SERVICE, INC  
 741 So 99 Hwy Modesto LA 2-1065  
 (See Display—Inside Back Cover)

**Store Fronts**

ACME GLASS CO  
 710 G St Modesto ....LA 3-5674  
 (See Display—Reverse of Inserts)  
 A P FISCHER INC  
 1310 9th St Modesto LA 4-6274  
 (See Display—Double Truck)

**Store Planning**

I C REFRIGERATION SERVICE, INC  
 741 So 99 Hwy Modesto LA 2-1065  
 (See Display - Inside Back Cover)

**Tape Recorders**

RADIO ELECTRONICS  
 1226 H St Modesto ....LA 2-7678

**Taverns**

GENE'S PLACE  
 300 Hughson Av .....TU 3-2104

**Television**

MILLER'S T V  
 359 Hughson Av .....TU 3-4784  
 RADIO ELECTRONIC  
 1226 H St Modesto ....LA 2-7678

**Television Antennas**

RADIO ELECTRONICS  
 1226 H St Modesto ....LA 2-7678

**Tile**

HUGHSON TILE CO  
 Whitmore Av .....TU 3-4467

**Tile Acoustical**

VALLEY ASBESTOS CO  
 1601 McHenry Av  
 Modesto ..... LA 4-5188

**Tires**

FISHER'S SERVICE  
 Tully Rd & Pine St ..TU 3-2412  
 MARTIN'S FLYING A SERVICE  
 350 Hughson Av .....TU 3-4855  
 TOW SERVICE GARAGE  
 531 Crows Landing Rd  
 Modesto ..... LA 2-1865  
 (See Display—Inside Front Cover)

**Tow Service**

MARTELLA'S AUTOMOTIVE SERVICE  
 167 Hughson Av .....TU 3-4973  
 TOW SERVICE GARAGE  
 531 Crows Landing Rd  
 Modesto .....LA 2-1865  
 (See Display—Inside Front Cover)

**Tractors**

CORNFORTH TRACTOR COMPANY  
 1302 9th St Modesto LA 2-5225  
 (See Display—Agricultural Page)

**Tractor Rentals**

BERRY & LEWIS RENTALS  
 1116 McHenry Av  
 Modesto ..... LA 3-8038  
 (See Display—Reverse Double Truck)

**Trailer Rentals**

BERRY & LEWIS RENTALS  
 1116 McHenry Av  
 Modesto ..... LA 3-8038  
 (See Display—Reverse of Double Truck)

**Trash Burners**

CURRIERS OF MODESTO  
 1912 Sunrise Av .....LA 4-0738

**Travel Service**

WALSER TRAVEL SERVICE  
 Hotel Covell Modesto ..LA 3-0731

**Trucking**

HOAGLAND'S TRANSPORT SERVICE  
 INC 460 Bystrom Rd  
 Modesto ..... LA 3-1845  
 (See Display—Front Cover Strip)

**Truck Repair**

MARTELLA'S AUTOMOTIVE SERVICE  
 167 Hughson Av .....TU 3-4974

**Typewriters**

McDOWELL'S  
 1116 G St Modesto ..LA 2-3140

**Upholstery**

TROY BUNCH  
 13th & H St Modesto ..LA 4-2604  
 (See Display—Backstrip)  
 HAWLEY'S UPHOLSTERY &  
 DRAPERIES  
 428 So. 99 Hwy Modesto LA 2-4425

**Variety Stores**

LEE'S VARIETY  
 332 Hughson Av .....TU 3-2083

# HOAGLAND'S TRANSPORT SERVICE INC.

## STATE WIDE SERVICE



★  
**GENERAL HAULING**  
 ★  
**Agriculture Hauling**  
 ★  
**Cranes**  
 ★

★  
**Flatbed Trailers**  
 ★  
**Lo-Bed Trailers & Winches**  
 ★  
**Lift Trucks**  
 ★

**460 Bystrom Road**

**MODESTO**  
**P.O. Box 175**

**LA 3-1845**

**Vitamins**

TURLOCK HEALTH FOOD & SUPPLY CENTER  
 112 So Center Turlock ME 4-7765

**Wallpaper**

VALLEY PAINT COMPANY  
 1029 11th St Modesto LA 3-1809  
 (See Display—Modesto Insert)

**Warehouses**

HUGHSON WAREHOUSE COMPANY  
 Santa Fe & Whitmore Rd TU 3-2292

**Washers**

RADIO ELECTRONICS  
 1226 H St Modesto .... LA 2-7678

**Welding**

GEORGE NEILSEN BLACKSMITH & WELDING  
 109 Charles St ..... TU 3-4325  
 C H WILLIAMS & SON  
 632 11th St Modesto .. LA 3-8339

**Wheel Alignment**

TOW SERVICE GARAGE  
 531 Crows Landing Rd  
 Modesto ..... LA 2-1865  
 (See Display—Inside Front Cover)

**Wind Machines**

KROELL'S PACKING SUPPLY  
 No 99 Hwy Box 990  
 Turlock ..... ME 4-5424  
 TOWT WIND MACHINE  
 No 99 Hwy Box 990  
 Turlock ..... ME 4-5424  
 (See Display—Turlock Insert)

**Window Glass**

ACME GLASS COMPANY  
 710 G St Modesto ... LA 3-5674  
 (See Display—Reverse of Inserts)

**Windshields**

ACME GLASS COMPANY  
 710 G St Modesto .... LA 3-5674  
 (See Display—Reverse of Inserts)

**Yard Goods - Plastic**

TROY BUNCH, The Seat Cover King  
 13th & H Sts  
 Modesto ..... LA 4-2604  
 (See Display—Backstrip)

# KEYS

## GENERAL INFORMATION

**CHURCHES**

KEYES CHURCHES AND THEIR SERVICES  
 ASSEMBLY OF GOD  
 ASSEMBLY OF GOD  
 Rev C J Brown, pastor  
 SUNDAY SERVICES  
 9:45 a.m. Sunday School  
 7:00 p.m. C A Services  
 7:45 p.m. Evangelistic Services  
 Tuesday evening  
 7:45 p.m. Family night  
 7:45 p.m. C A Services, Friday  
 BAPTIST  
 LAND MARK MISSIONARY BAPTIST CHURCH  
 North 9th St  
 Elder Gordon Richwine, pastor  
 SUNDAY SERVICES  
 11:00 a.m. Preaching hour

**THE**  
**MODESTO**  
**TRIBUNE**

*"Stanislaus County's*

*Fastest Growing Weekly Newspaper"*

# KEYES CLASSIFIED D I R E C T O R Y

## Auto Accessories

SHEPHERD AUTO WRECKERS  
Foot & Keyes Rd ... KE 7-5012

## Auto Dealers—Used Cars

OLIVER PARIS WRECKING  
Frontage Rd ... KE 7-5015  
SHEPHERD AUTO WRECKERS  
Foot & Keyes Rds ... KE 7-5012

## Auto Parts—Used

SHEPHERD AUTO WRECKERS  
Foot & Keyes Rds ... KE 7-5012

## Auto Repairs

KEYES GARAGE  
Frontage Rd & 99 Hwy ME 4-6460

## Auto Tow Service

OLIVER PARIS WRECKING  
Frontage Rd ... KE 7-5051

## Auto Wreckers

OLIVER PARIS WRECKING  
Frontage Rd ... KE 7-5051  
SHEPHERD AUTO WRECKING  
Foot & Keyes Rds ... KE 7-5012

## Beverages

E & M FOOD STORE  
Frontage Rd ... ME 2-1738

## Diesel Fuel

GEORGE H NUNES  
Keyes Rd & 99 Hwy .. ME 4-5628

## Electric Appliances

ROSE'S FURNITURE &  
APPLIANCES  
5436 Frontage Rd ... ME 2-3394

## Frozen Foods

E & M FOOD STORE  
Frontage Rd ... ME 2-1738

## Fruit Stands—Retail & Wholesale

YONAN PRODUCE  
Keyes Rd & 99 Hwy .. ME 4-5071  
KE 7-2441

## Furniture

ROSE'S FURNITURE AND  
APPLIANCES  
5436 Frontage Rd ... ME 2-3394

## Gas—LP

GEORGE H NUNES  
Keyes & 99 Hwy ... ME 4-5628

## Gasoline & Oil Distributors

GEORGE H NUNES  
Keyes Rd & 99 Hwy .. ME 4-5628

## Grocers

E & M FOOD STORE  
Frontage Rd ... ME 2-1738  
MCGILL'S MARKET  
4317 Christine Av ... ME 4-5009  
MOLLES MARKET  
Faith Home & Rd ... KE 7-1778

## Junk Dealers

SHEPHERD AUTO WRECKERS  
Foot & Keyes Rds ... KE 7-5012

## Meats

E & M FOOD STORE  
Frontage Rd ... ME 2-1738

## Radio & Television Sales & Service

ROSE'S FURNITURE & APPLIANCES  
5436 Frontage Rd ... ME 2-3394

## Ranges—New & Used

ROSE'S FURNITURE & APPLIANCES  
5436 Frontage Rd ... ME 2-3394

## Refrigerators—New & Used

ROSE'S FURNITURE & APPLIANCES  
5436 Frontage Rd ... ME 2-3394

## Scrap Metals

SHEPHERD AUTO WRECKERS  
Foot & Keyes Rd ... KE 7-5012

## Service Stations

DAVIS SHELL SERVICE  
Keyes Rd & 99 Hwy .. ME 2-1294  
GEORGE H NUNES  
Keyes Rd & 99 Hwy .. ME 4-5628

## Sundries

KEYES SUNDRIES  
Frontage Rd & 99 Hwy ME 4-7588

## Tires

GEORGE H NUNES  
Keyes Rd & 99 Hwy .. ME 4-5628

## Vegetable & Fruit Stands

YONAN PRODUCE  
Keyes Rd & 99 Hwy ... ME 4-5071  
KE 7-2441


## Washers—New & Used Sales & Service

ROSE'S FURNITURE &  
APPLIANCES  
5436 Frontage Rd ... ME 2-3394

(Cont'd.)

# Oliver Paris wrecking

OPEN 7 DAYS A WEEK



- Auto & Truck Wreckers
- Towing
- Used Cars & Trucks

OLIVER PARIS  
OWNER  
FRONTAGE RD. — KEYES

Business — Home  
KE 7-5051 KE 7-0603

# SHEPHERD AUTO WRECKERS

"If You Need He'p - - - See Shep!"



EVERY KIND OF AUTO PART & ROAD NEEDS  
.. If We Don't Have It .. We'll Locate It! ..

- USED CARS • SCRAP METALS • USED TIRES & RADIOS
- ☆ WE BUY CARS, TRUCKS & TRACTORS  
FOR WRECKING ☆

J. L. (Shep) SHEPHERD, Owner

Foot & Keyes Roads, Keyes KE 7-5012



# YONAN PRODUCE CO.

WHOLESALE & RETAIL



WE RAISE OUR **FRUIT** ON OUR OWN RANCH  
 MELONS — POTATOES — SWEET POTATOES — YAMS  
 GRAPES  
 —ALL KINDS OF FRUIT—

WHOLESALE DELIVERY • GOOD THINGS TO EAT  
 Keyes Rd. & Hwy. 99, Keyes ♦ ME 4-5071 ♦ KE 7-2441

# ROSE'S FURNITURE & APPLIANCES



**NEW & USED FURNITURE & APPLIANCES**

RADIO & TELEVISION SALES & SERVICE

5436 FRONTAGE RD. • KEYES • Phone: ME 23394

# GEORGE H. NUNES



OILS — GREASES — SPECIALTY PRODUCTS  
 TANKS — PUMPS — SERVICE STATIONS

WHOLESALE DISTRIBUTOR  
 OF DOUGLAS GASOLINE  
 JOBBER  
 OF SHELL OILS & GREASES

P.O. BOX 127  
 KEYES, CALIF.

Phone Turlock ME 4-5628  
 Res. Turlock ME 4-5857

# E&M FOOD STORE



**SELF SERVICE**

Groceries - Meats - Fresh Vegetables - Beverages  
 Frozen Foods - Dairy Products - Sundries - Tobacco

OWNED AND OPERATED BY ALBERT NEUFELD  
 FRONTAGE ROAD KEYES ME 2-1738

# KNIGHTS CLASSIFIED DIRECTORY

## CHURCHES

**METHODIST**  
COMMUNITY METHODIST CHURCH  
Corner Ellen and Shuri Sts  
J Freelan Johnson, pastor  
**SUNDAY SERVICES**  
9:45 - 11:00 a.m. Church School  
for all classes  
11:00 a.m. Sermon  
7:00 - 8:00 p.m. MYF, 1st and 3d  
Sundays

## Engineers

**TUDOR & GOODENOUGH**  
Tulloch Dam Site . . . . .TU 1-3362

## Grocers

**HUNTER'S GROCERY**  
120 Hwy . . . . .TU 1-3350

## Restaurants

**KIRKPATRICK'S CAFE**  
Main St . . . . .TU 1-3343

## JOIN

## YOUR LOCAL

## CHAMBER OF COMMERCE

# NEWMAN

## GENERAL INFORMATION

## OFFICIALS

**CITY OF NEWMAN**  
(County of Stanislaus)  
Incorporated June 10, 1908  
General Law City. Population 1866,  
Council Meets 2d and 4th Tuesdays  
of month  
Mayor, Leland E Steffensen  
Councilman . . . . .Howell V Armstead  
Councilman . . . . .Gerald Smith  
Councilman . . . . .W E Enos  
Councilman . . . . .F A Patchett  
Clerk . . . . .S C Bell  
Attorney . . . . .George G Murry  
Police Chief . . . . .L F Jensen  
Treasurer . . . . .Anthony Souza  
Auditor . . . . .R Schwerin & Co  
Assessor . . . . .Allan Whitehurst  
Engineer . . . . .Vacancy  
Street Supt'd . . . . .L F Jensen  
Bldg Inspector . . . . .L W Jensen  
Health Officer . . . . .Dr Geo F O'Brien  
Civilian Defense Dir L E Steffensen

6:00 p.m. Young People  
7:0 p.m. Preaching & Communion  
7:30 p.m. Bible Study Thursday  
**JEHOVAH'S WITNESSES**  
**JEHOVAH'S WITNESSES**  
1236 M St  
Congregation Meetings:  
7:30 p.m. Watchtower Bible Study,  
Sunday  
7:30 p.m. Group Bible Study, Tues  
7:30 p.m. Service Meeting and  
Ministry School, Tues.  
**LUTHERAN**  
**ST JAMES LUTHERAN CHURCH**  
George L Steinbeck, pastor  
**SUNDAY SERVICES**  
9:30 a.m. Sunday School and Teen-  
Age Class  
10:30 a.m. Divine Worship  
7:30 p.m. Altar Guild Meeting Mon.  
8:00 p.m. Christian Information  
Course for Adults  
A nursery for pre-school children is  
maintained in the Social Hall.  
**PRESBYTERIAN**  
**PRESBYTERIAN CHURCH**  
**SUNDAY SERVICES**  
9:45 a.m. Sunday School  
11:00 a.m. Morning Worship  
A nursery for children is provided  
during morning worship

**O ST**  
Begins at city limits 1 block S of  
Inyo Av running NW. Intersected  
by Inyo Av, Stanislaus St, Merced  
St, Fresno St, Tulare St, Kern  
St, Mariposa St ends at Yolo St.

**FRESNO ST W**  
Begins at L St running SW. In-  
tersected by M St, N St, O St,  
P St, Q St, R St, S St and T St,  
continues into county.

**P ST**  
Begins in Inyo Av running NW.  
Intersected by Stanislaus St,  
Merced St, Fresno St, Tulare St,  
Kern St, Mariposa St ends at Yolo  
St.

**INYO AV**  
Begins at E city limits (Race  
Track Rd) running W. Intersect-  
ed by L St, M St, N St, O St,  
P St, Q St, R St, Stanislaus St,  
S St, T St, Merced St, West Av  
and continues into county.

**Q ST**  
Begins at Inyo Av running NW.  
Intersected by Stanislaus St, Mer-  
ced St, Fresno St, Tulare St, Kern  
St, Mariposa St ends at Yolo  
St.

**KERN ST**  
Begins at L St running SW. In-  
tersected by M St, N St, O St,  
P St, Q St, R St, S St, and T St  
ends at city limits.

**R ST**  
Begins at Inyo Av running NW.  
Intersected by Stanislaus St,  
Merced St, Fresno St, Tulare St,  
Kern St, Mariposa St ends at  
Yolo St.

**LEE AV**  
Begins at Yolo St running NW to  
dead end.

**S ST**  
Begins at Inyo Av running NW.  
Intersected by Merced St, Fresno  
St, Tulare St, Kern St, Mariposa  
St ends at Yolo St.

**MARIPOSA ST**  
Begins at T St running NE. In-  
tersected by S St, R St, Q St,  
P St, O St, N St to dead end.

**T ST**  
Begins at Inyo Av running NW.  
Intersected by Merced St, Fresno  
St, Tulare St, Kern St, Orestim-  
ba Av, Mariposa St ends at Yolo  
St.

**MERCED ST**  
Begins at West Av running NE.  
Intersected by T St, S St, R St,  
Q St, O St, N St, M St, L St,  
Eucalyptus Av, I St, H St con-  
tinues into county.

**DRISKELL AV**  
Begins at Kern St running E. In-  
tersected by Eucalyptus Av con-  
tinues into county.

**ORESTIMBA CREEK RD**  
Begins at S St, at Yolo St, run-  
ning W. Intersected by T St to  
dead end.

**ELM ST**  
Begins at Inyo Av running S ends  
at city limits.

**ORESTIMBA AV**  
Begins at T St running W to  
dead end.

**EUCALYPTUS AV**  
Begins at Driskell Av running SE.  
Intersected by East Fresno St ends  
at Merced St.

**PEAL AV**  
Begins at Yolo St running NW to  
dead end.

**FIG LN**  
Begins at Yolo St and Q St run-  
ning NW into county.

**PINE ST**  
Begins at Inyo Av running S ends  
at Spring St.

**FRESNO ST E**  
Begins at Eucalyptus Av running  
SW to dead end and running NE.  
Intersected by I St, H St ends at  
city limits.

**PRINCE ST**  
Begins at Inyo Av running S. In-  
tersected by Spring St continues  
into county.

**RACE TRACK RD**  
Begins at Inyo Av at E city lim-  
its running E into county.

**SAN JOAQUIN ST**  
Begins at M St running NE ends  
at L St.

**SPRING ST**  
Intersected by Pine St to dead  
end. Begins at Prince St running W  
end.

## CHURCHES

### NEWMAN CHURCHES AND THEIR SERVICES

**BAPTIST**  
**FIRST BAPTIST CHURCH**  
1024 Fresno St  
Rev E T Davis, pastor  
**SUNDAY SERVICES**  
9:45 a.m. Sunday School  
11:00 a.m. Morning Worship  
6:30 p.m. Training Union  
7:30 p.m. Evening Worship  
7:30 p.m. Prayer Service, Wed

**CATHOLIC**  
**ST JOACHIM'S CHURCH**  
Father Manuel P Costa, pastor  
**SUNDAY SERVICES**  
8:30 a.m. and 10:00 a.m. Sunday  
Masses

**CHRISTIAN SCIENCE**  
**CHRISTIAN SCIENCE SOCIETY**  
**SUNDAY SERVICES**  
11:00 a.m. Sunday School  
11:00 a.m. Worship, Community Hall  
8:00 p.m. Testimonial Meeting 4th  
Wednesday, monthly

**CHURCH OF CHRIST**  
**CHURCH OF CHRIST**  
**SUNDAY SERVICES**  
10:00 a.m. Bible Classes for all  
11:00 a.m. Preaching & Communion

## NEWMAN STREET GUIDE

**H ST**  
Begins at Merced St running NW,  
ends at Fresno St.

**I ST**  
Begins at Merced St running NE  
ends at Fresno St.

**L ST**  
Begins at Inyo Av running NW,  
intersected by San Joaquin St,  
Stanislaus St, Merced St, Fresno  
St, Tulare St ends at Kern St.

**M ST**  
Begins at Inyo Av running NW.  
Intersected by San Joaquin St,  
Stanislaus St, Merced St, Fresno  
St, Tulare St, Kern St, to dead  
end.

**N ST**  
Begins at City Limits, State Hwy  
41 running NW. Intersected by  
Inyo Av, Stanislaus St, Merced  
St, Fresno St, Tulare St, Kern St,  
Mariposa St, Yolo St, continues  
into county.

**STANISLAUS ST**

Begins at Inyo Av at R St running NE. Intersected by Q St, P St, O St, N St, M St ends at L St.

**TULARE ST**

Begins at West Av at city limits running NE. Intersected by T St, S St, R St, Q St, P St, O St, N St, ends. Begins again after SPRR at M St running NE, ends at L St.

**WEST AV**

Begins at city limits S of Inyo Av, running N. Intersected by Inyo Av, Merced St, Fresno St, Tulare St, Kern St, Orestimba Av, Orestimba Creek Rd, continues into county.

**YOLO ST**

Begins at T St running NE. Intersected by S St, R St, Q St, Fig Lane, Peal Av, P St, Lee Av, O St, N St to dead end.

# NEWMAN CLASSIFIED

**Adding Machines**

McDOWELL'S  
1116 G St Modesto . . . LA 2-3140

**Agricultural Implements**

CORNFORTH TRACTOR CO  
1309 9th St Modesto . . . LA 2-5225  
(See Display—Agricultural Page)

**Air Compressors**

BENSON & ZIMMERMAN  
11th & H Sts Modesto LA 4-3131  
(See Display—Page Facing Inside Back Cover)

**Air Compressors—Rental**

BERRY & LEWIS RENTALS  
1116 McHenry Av  
Modesto . . . . . LA 3-8038  
(See Display—Reverse of Dbl Truck)

**Air Conditioning**

BILL'S REFRIGERATION SERVICE  
1026 Merced St . . . . . 2079  
A P FISCHER, INC  
1310 9th St Modesto . LA 4-6274  
(See Display—Double Truck)  
I C REFRIGERATION SERVICE, INC  
741 S 99 Hwy, Modesto. LA 2-1065  
(See Display—Inside Back Cover)  
VALLEY ASBESTOS CO  
1601 McHenry Av  
Modesto . . . . . LA 4-5188  
(See Display - Postcard)

**Air Conditioning Service**

I C REFRIGERATION SERVICE, INC  
741 S 99 Hwy, Modesto. LA 2-1065

**Air Line Ticket Agencies**

WALSER TRAVEL SERVICE  
Hotel Covell, Modesto. . . LA 3-0731

**Ambulance Service**

COMMUNITY AMBULANCE SERVICE  
1614 H St, Modesto. . . LA 3-9191  
(See Display - Professional Page)

**Auto Accessories**

MENZES MOBIL SERVICE  
1361 N St. . . . . 2344

**Auto Body & Fender Repair**

TOW SERVICE GARAGE  
531 Crows Landing Rd  
Modesto . . . . . LA 2-1865  
(See Display - Inside Front Cover)

**Auto Dealers—New**

J M FRIAS  
134 N St . . . . . 708  
KALJIAN CHEVROLET CO  
1303 N St . . . . . 737  
FRANK NUNES GARAGE  
1248 O St . . . . . 564

**Auto Dealers—Used**

J M FRIAS  
1345 N St . . . . . 708

**Auto Convertible Tops**

TROY BUNCH, The Seat Cover King  
13th & H Sts, Modesto. . LA 4-2604  
(See Display - Backstrip & Postcard)

**Auto Electric Service**

TOW SERVICE GARAGE  
531 Crows Landing Rd,  
Modesto . . . . . LA 2-1865  
(See Display - Inside Front Cover)

**Auto Frame Straightening**

TOW SERVICE GARAGE  
531 Crows Landing Rd,  
Modesto . . . . . LA 2-1865  
(See Display - Inside Front Cover)  
C H WILLIAMS & SON  
632 - 11th St . . . . . LA 3-5188

**Auto Glass**

ACME GLASS CO  
710 G St, Modesto. . . LA 3-5674  
(See Display - Reverse of Inserts)

**Auto Painting**

BENSON & ZIMMERMAN  
11th & H St, Modesto. . LA 4-3131  
(See Page Facing Inside Back Cover)  
TOW SERVICE GARAGE  
531 Crows Landing Rd,  
Modesto . . . . . LA 2-1865  
(See Inside Front Cover)  
C H WILLIAMS & SON  
631 - 11th St, Modesto. LA 3-8339

**Auto Parts**

BENSON & ZIMMERMAN  
11 & H Sts, Modesto. . . LA 4-3131  
(See Display - Page Facing Inside Front Cover)  
CHRISTOFERSON'S AUTO PARTS  
1414 O St . . . . . 758  
D & B SERVICE  
Hwy 33 . . . . . 862  
LUCKY WHOLESALE CO  
1450 Inyo St . . . . . 2325

**Auto Radiators**

NEWMAN RADIATOR SERVICE  
Hwy 33 . . . . . 877  
C H WILLIAMS & SON  
632 - 11th St, Modesto. . LA 3-8339

**Auto Repairs**

GONZALES GARAGE  
1255 O St . . . . . 2005  
PETER MARIETTA SHELL SERVICE  
1502 N St . . . . . 2018

**Auto Tow Service**

TOW SERVICE GARAGE  
531 Crows Landing Rd,  
Modesto . . . . . LA 2-1860  
(See Display - Inside Front Cover)

**Auto Upholstery**

TROY BUNCH, THE SEAT COVER KING  
13th & H Sts, Modesto. LA 4-2604  
(See Display - Backstrip)

**Auto Washing & Polishing**

MENEZES MOBIL SERVICE  
1361 N St . . . . . 2344  
McHENRY 3 MINUTE CAR WASH  
McHenry & Morris Av,  
Modesto . . . . . LA 3-7856  
SUPER SPEED AUTO LAUNDRY  
4th & H St, Modesto. . LA 3-6300

**Auto Wheel Alignment**

C H WILLIAMS & SON  
632 - 11th St, Modesto. LA 3-5188

**Awnings**

VALLEY ASBESTOS CO  
1601 McHenry Av,  
Modesto . . . . . LA 4-5188

**Awnings—Aluminum**

VALLEY ASBESTOS CO  
1601 McHenry Av,  
Modesto . . . . . LA 4-5188

**Bakeries**

NEWMAN BAKERY  
1434 O St . . . . . 665

**Banks**

FIRST WESTERN BANK & TRUST CO  
945 Fresno. . . . . 4661

**Banking**

MODESTO BUILDING & LOAN ASSN  
821 - 10th St, Modesto. . LA 3-2648

**Barbecue Equipment**

CURRIERS OF MODESTO  
521 Santa Rita Av,  
Modesto . . . . . LA 4-0738

**Batteries**

BENSON & ZIMMERMAN  
11th & H . . . . . LA 4-3131  
(See Display - Facing Inside Back Cover)

GENERAL PETROLEUM CORP  
746 Merced St . . . . . 736


PETER MARIETTA SHELL SERVICE  
1361 N St . . . . . 2344

MENEZES MOBIL SERVICE  
1361 N St . . . . . 2344

TOW SERVICE GARAGE  
531 Crows Landing Rd. . . LA 2-1865  
(See Display - Inside Front Cover)

**FOR YOUR BEST BUYS**  
In New & Used Cars . . .

## See JOE FRIAS



**J. M. FRIAS SALES**

**Hwy. 33  
NEWMAN, CALIF.**

**Ofc. Tel: 708  
Res. Tel: 866**

## West Side Beauty Nook



**Angie Borrelli**

**COMPLETE BEAUTY SERVICE**

BY APPOINTMENT ONLY

1016 Fresno St.

Phone 4151

**NEWMAN**

## WESTSIDE PRODUCTS CO.



Manufacturers of WESTSIDE BRAND Insecticides  
**FERTILIZERS • SPREADING • SPRAYING**

*Specializing In Ant Control*

Field Inspection Service By:

Residences

H. R. (SI) KUNDE Newman 2097

FRED WALKER Newman 2780

EARL ARCHER - PATTERSON - TYLER 2-3091

1502 M St. Newman Ofc. Phones 774 & 775

### Beauty Shops

FASHIONS FINEST SALON OF BEAUTY  
429 McHenry Modesto . . . LA 4-1409  
NEWMAN BEAUTY SALON  
1035 T St . . . . . 742  
WEST SIDE BEAUTY NOOK  
1016 Fresno St . . . . . 4151

### Bedspreads

TROY BUNCH, The Seat Cover King  
13th & H Sts, Modesto . . . LA 4-2604  
(See Display - Backstrip)

### Blacksmithing

C H WILLIAMS & SON  
632 - 11th St, Modesto . LA 3-8339

### Brake Work

TOW SERVICE GARAGE.  
531 Crows Landing Rd,  
Modesto . . . . . LA 2-1865  
(See Display - Inside Front Cover)

### Building & Loan Associations

MODESTO BUILDING & LOAN ASSN  
821 - 10th St, Modesto . LA 3-2648

### Building Materials

VALLEY ASBESTOS CO  
1601 McHenry Av,  
Modesto . . . . . LA 4-5188

### Buses—Charter

PATCHETTS BUS & TRANSPORTATION  
1121 N St . . . . . 674

### Business Opportunity—Brokers

HARRY CIRAOLO  
514 McHenry Av, Modesto LA 2-4045

### Carpenters

JACK E BORJORQUES  
1313 L St . . . . . 881

### Carpet Cleaning

HOUSE OF CARPETS  
920 McHenry Av, Modesto LA 3-5664

### Carpet Laying

STEVE'S FLOOR COVERINGS  
1247 O St . . . . . 2031

### Carpet Repairing

HOUSE OF CARPETS  
920 McHenry Av, Modesto LA 3-5664

### Carports

VALLEY ASBESTOS CO  
• 1601 McHenry Av,  
Modesto . . . . . LA 4-5188

### Cattle

CERUTTI BROS  
Tricky Rd 9 . . . . . 2494

### Chain Saws—Rental

BERRY & LEWIS RENTALS  
1161 McHenry Av,  
Modesto . . . . . LA 3-8038  
(See Display - Reverse of Double Truck)

### Chemicals

DRY CHEMICAL PACIFIC  
105 G St, Modesto . . . . LA 3-8389

### Cleaners

MODEL CLEANERS  
1501 O St . . . . . 573

### Clothing—Children's

CRADLE TEEN SHOP  
934 Fresno St . . . . . 681

### Clothing—Men's

KAMP'S STORE  
1410 O St . . . . . 724  
SILVEIR'S MEN'S CLOTHING  
1435 O St . . . . . 521

### Clothing—Women's

FASHION SHOP  
937 Fresno St . . . . . 657

### Contractors—Awnings

VALLEY ASBESTOS CO  
1601 McHenry Av,  
Modesto . . . . . LA 4-5188

### Contractors—Metal

A P FISCHER, INC  
1310 - 9th St, Modesto . LA 4-6274  
(See Display, Double Truck)

### Crating

MODESTO TRANSFER CO  
1403 - 9th St, Modesto . LA 2-4146  
(See Display - Backcover)

## NEWMAN ELECTRIC CO.

INDUSTRIAL, COMMERCIAL & RESIDENTIAL WIRING

*Motor Rewinding & Repairing*

**YOU PHONE US -- WE'LL WIRE YOU**

**FREE ESTIMATES**

1221 N St. Newman • Phones: Newman 690 - Res. 2125

**Curtains**

TROY BUNCH BEAUTI PLEAT DRAPERIES  
1215 H St .....LA 2-1472  
(See Display Backstrip)

**Dairies**

GOLDEN STATE CO., LTD  
1649 L St .....4541  
GOLDEN VALLEY CREAMERY  
1527 N St .....4161

**Dairy Refrigeration**

BILL'S REFRIGERATION SERVICE  
1026 Merced St .....2079

**Dairy Supplies**

FERRO & MENDOSA  
1030 Merced St .....4921

**Department Stores**

SIMON NEWMAN CO  
918 Fresno St .....4411

**Diesel Fuel**

R D BACIGALUPI  
Stanislaus & M Sts .....4121  
GENERAL PETROLEUM CORP  
746 Merced St,  
Newman Branch .....736  
P O Box 513,  
Westley Branch .....TY 4-3451

**Diesel Tractor &**

**Truck Repair**  
D & B SERVICE  
Hwy 33 .....862

**Doors—Shower**

ACME GLASS CO  
710 G St, Modesto.....LA 3-5674  
(See Display - Reverse of Inserts)

**Doors—Sliding -**

**Aluminum & Steel**  
ACME GLASS CO  
710 G St, Modesto.....LA 3-5674  
(See Display—Reverse of Insert)

**Doors—Wooden,**

**Plastic & Folding**  
VALLEY ASBESTOS CO  
1601 McHenry Av,  
Modesto .....LA 4-5188

**Drainboards—**

**Stainless Steel**  
VALLEY ASBESTOS CO  
1601 McHenry Av,  
Modesto .....LA 4-5188

**Draperies**

TROY BUNCH BEAUTI PLEAT DRAPERIES  
1215 H St, Modesto.....LA 2-1472  
(See Display - Backstrip)  
HAWLEY'S UPHOLSTERY & DRAPERIES  
428 S 99 Hwy, Modesto.LA 2-4425  
STEVE'S FLOOR COVERINGS  
1247 O St .....2031

**Drug Stores**

COAST DRUG STORES, INC  
McHenry Village, Modesto LA 3-0723  
(See Display - Reverse of Title Page)  
THE CORNER DRUG STORE  
1404 O St .....644  
PIONEER DRUG STORE  
1457 O St .....634

**Drug Sundries**

CORREI'S  
1217 O St .....533

**Dryers**

RADIO ELECTRONICS  
1226 H St, Modesto....LA 2-7678

**Electric Appliances**

BILL'S REFRIGERATION SERVICE  
1026 Merced St .....2079  
NEWMAN ELECTRIC CO  
1221 N St .....690  
RADIO ELECTRONICS  
1226 H St, Modesto....LA 2-7678

**Electric Fixtures**

NEWMAN ELECTRIC CO  
1221 N St .....690

**Electrical Contractors**

NEWMAN ELECTRIC CO  
1221 N St .....690

**Engineering**

I C REFRIGERATION, INC  
741 S 99 Hwy, Modesto .LA 2-1065  
(See Display - Inside Back Cover)

**Ennz Products**

DRY CHEMICAL PACIFIC  
105 G St, Modesto....LA 3-8389

**Exterminating**

WESTSIDE PRODUCTS CO  
1502 N St .....774 & 775

**Farm Equipment**

KROELLS PACKING SUPPLY  
N 99 Hwy, Box 990,  
Turlock .....ME 4-5424  
TOWT WIND MACHINE  
(See Display - Turlock Insert)  
WEST SAN JOAQUIN TRACTOR CO  
1121 N St .....510

**Farm Equipment Repair**

D & B SERVICE  
Hwy 33 .....862

**Farm Implements—**

**Sales & Service**  
CORNFORTH TRACTOR CO  
1302 - 9th St, Modesto .LA 2-5225  
(See Display - Agricultural Page)

**Farm Machinery Parts**

**& Tires**  
CORNFORTH TRACTOR CO  
1302 - 9th St, Modesto .LA 2-5225  
(See Display - Agricultural Page)

**Fertilizers**

WESTSIDE PRODUCTS CO  
1502 N St .....774 & 775

**Fibreglass**

VALLEY ASBESTOS CO  
1601 McHenry Av,  
Modesto .....LA 4-5188

**Floor Coverings**

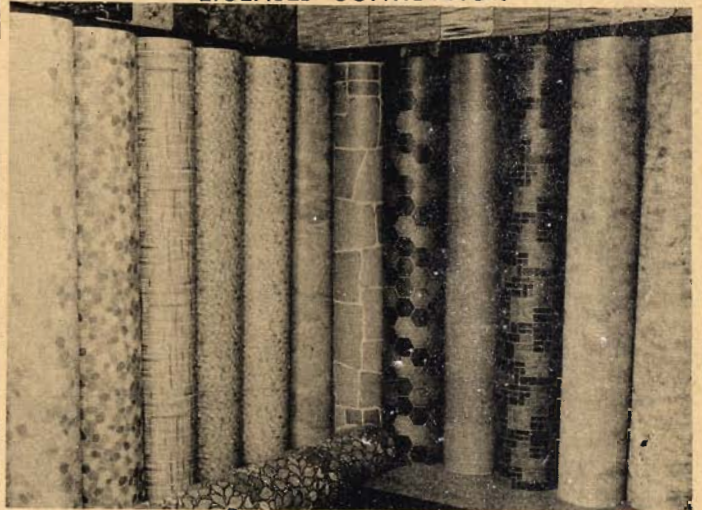
HOUSE OF CARPETS  
520 McHenry Av, Modesto LA 3-5664  
STEVE'S FLOOR COVERINGS  
1247 O St .....2031

**Florists**

RONNY'S FLORAL & GIFT SHOP  
1220 O St .....611

**STEVE'S FLOOR COVERINGS**

LICENSED CONTRACTOR



**ARMSTRONG & PABCO Linoleum . . . KENTILE**

★ CARPET LAYING ★

Window Shades . . . Draperies . . . Venetian Blinds

1247 "O" St.

Phone: 2031

**NEWMAN**

**Frost Protection**

KROELLS PACKING SUPPLY  
N 99 Hwy, Box 990,  
Turlock .....ME 4-5424  
TOWT WIND MACHINE  
(See Display - Turlock Insert)

**Frozen Foods**

CORREI'S  
1217 O St .....533

**Fruit & Vegetable Packers**

A LEVY & J ZENTNER CO  
Hwy 33 .....850

**Funeral Directors**

DAVIS-HANSEN FUNERAL CHAPEL  
1258 H St .....628

**Furniture**

NUNES FURNITURE  
1335 O St .....580

**Furniture—Foam**

**Rubber**  
TROY BUNCH, THE SEAT COVER  
KING  
13th & H Sts, Modesto....LA 4-2604  
(See Display - Backstrip)

**Garage and Service Station Equipment**

BENSON & ZIMMERMAN  
11th & H Sts .....LA 4-3131  
(See Display - Page Facing Inside Back Cover)

**Garages**

D & B SERVICE  
Hwy 33 .....862  
GONZALES GARAGE  
1255 O St .....2005  
FRANK NUNES GARAGE  
1248 O St .....564

TOW SERVICE GARAGE  
531 Crows Landing Rd,  
Modesto .....LA 2-1865  
(See Display - Inside Front Cover)  
C H WILLIAMS & SON  
632 - 11th St, Modesto...LA 3-8339

**Garden Equipment—**

**Rental**  
BERRY & LEWIS RENTALS  
1116 McHenry Av,  
Modesto .....LA 3-8038  
(See Display - Reverse of Double Truck)

Need A - - -

Florist Tv Expert  
Plumber Roofer  
Painter Floorman

Contractor

Consult - - -

The CLASSIFIED PAGES

# CORREIA'S MARKET

Your Neighborhood Grocer



**Staple & Fancy Groceries:**

LUNCH MEATS . . . FROZEN FOODS

FRESH FRUITS & VEGETABLES

Notions

1217 "O" ST. Newman

Tel.: 533

## Gasoline & Oil Distributors

R D BACIGALUPI, SHELL OIL PRODUCTS  
Stanislaus & M Sts ..... 4121  
JOHN SEQUEIRA,  
GENERAL PETROLEUM CORP  
746 Merced St ..... 736  
P O Box 513 ..... TY 4-3451

## Gifts - Domestic & Imported

TURLOCK HEALTH FOOD & SUPPLY CO  
112 S Center St, Turlock ME 4-7765

## Glass

ACME GLASS CO  
710 G St, Modesto, LA 3-5674  
(See Display - Reverse of Inserts)

## Glazing—Contractors

ACME GLASS CO  
710 G St, Modesto, LA 3-5674  
(See Display - Reverse of Inserts)

## Grocers

CORREIA'S MARKET  
1217 O St ..... 533  
D'AVILA GROCERY  
1430 O St ..... 748  
HILLS FERRY STORE  
Hills Ferry Rd ..... 2585  
MACK'S CASH MARKET  
1626 O St ..... 762  
SAM'S FOOD TOWN  
1046 Fresno St ..... 878

SEQUEIRA & SON  
1345 O St ..... 4821  
WALLY'S COUNTRY STORE  
Hwy 33 ..... 844

## Guns

KOENIG'S GUN SHOP  
1621 N St ..... 659

## Hatcheries

HUSMAN HATCHERY  
1617 O St ..... 788

## Hay Balers & Tools

CORNFORTH TRACTOR CO  
1302 - 9th St, Modesto, LA 2-5225  
(See Display - Agricultural Page)

## Health Foods

TURLOCK HEALTH FOOD SUPPLY CENTER  
112 S Center St, Turlock ME 4-7765  
(See Display - Postcard)

## Heaters—Orchard

KROELLS PACKING SUPPLY & TOWT WIND MACHINE  
N 99 Hwy, Box 990,  
Turlock ..... ME 4-5424  
(See Display - Turlock Insert)

## Heating

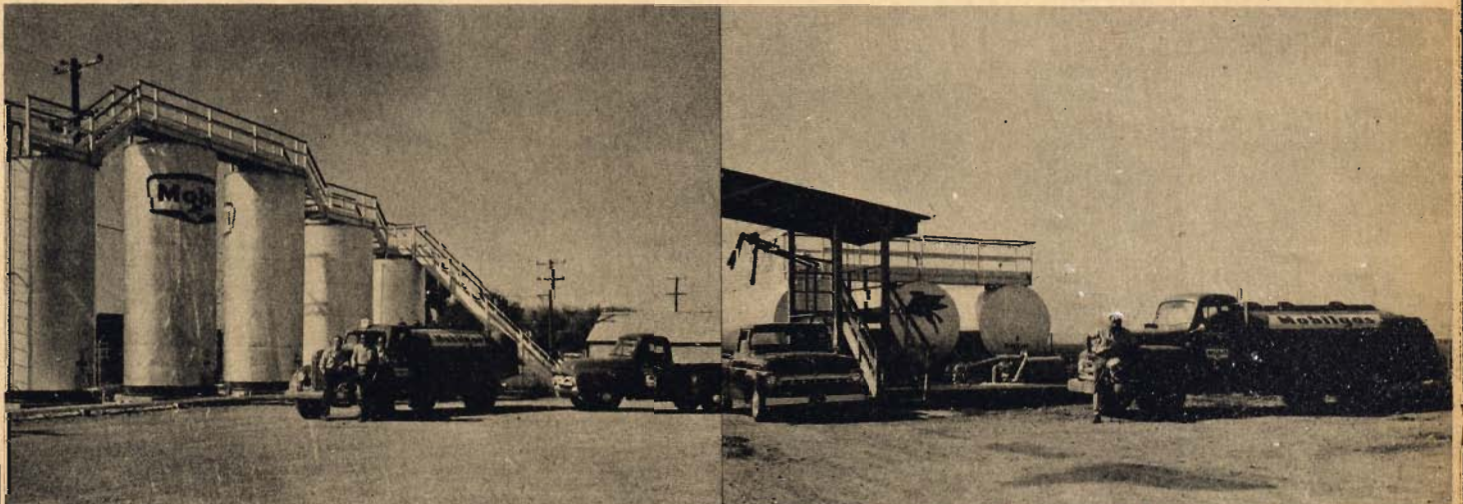
A P FISCHER, INC  
1310 - 9th St, Modesto, LA 4-6274  
(See Display - Double Truck)  
I C REFRIGERATION SERVICE, INC  
741 S 99 Hwy, Modesto, LA 2-1065  
(See Display - Inside Back Cover)

# GENERAL PETROLEUM CORP.

WHOLESALE AGENT FOR GENERAL PETROLEUM PRODUCTS

COVERING WEST SIDE

Gustine • Newman • Crows Landing • Patterson • Westley • Vernalis



### Westley Branch

SEQUEIRA BROGGI  
P. O. Box 513  
Phone TYler 4-3451

Mobilize With Mobilgas & Mobiloil  
TIRES • BATTERIES • ACCESSORIES  
DIESEL FUEL OIL  
ALL TRUCKS RADIO DISPATCHED

### Newman Branch

JOHN SEQUEIRA  
746 Merced St.  
Phone 736

**High Fidelity Systems**

RADIO ELECTRONICS  
1226 H St, Modesto... LA 2-7678

**Hospital Equipment**

COMMUNITY AMBULANCE SERVICE  
1614 H St, Modesto... LA 3-9191  
(See Display - Professional Page)

**Hotels**

AMERICAN HOTEL  
1446 O St ..... 517  
HOTEL ROSE  
1442 O St ..... 731

**House Movers**

AMERICAN HOUSE MOVERS  
2112 Blue Gum Av,  
Modesto ..... LA 2-1288

**Ice**

NATIONAL ICE DELIVERY  
1408 M St ..... 754

**Incinerators**

CURRIERS OF MODESTO  
1912 Sunrise Av, Modesto LA 4-0738

**Industrial Equipment**

CORNFORTH TRACTOR CO  
1302 - 9th St, Modesto... LA 2-5225  
(See Display - Agricultural Page)

**Insecticides**

WESTSIDE PRODUCTS CO  
1502 M St ..... 774 & 775

**Insulation**

VALLEY ASBESTOS CO  
1601 McHenry Av,  
Modesto ..... LA 4-5188

**Insurance**

CAL-FARM INSURANCE CO  
1405 - 8th St, Modesto... LA 2-7278  
HARRY CIRAOLO  
514 McHenry Av, Modesto LA 2-4045  
FARMERS INSURANCE GROUP  
AGENCY  
1423 O St ..... 728  
J J OLIVEIRA  
1247 O St ..... 710

**Iron Works**

BEATY'S IRON WORKS  
1027 Merced St ..... 2115

**Jewelers**

BEALL & BROWN  
940 Fresno St ..... 2171

**Laundries**

NEWMAN STEAM LAUNDRY &  
LINEN SUPPLY  
1321 N St ..... 759

**Leather**

NEWMAN SADDLERY  
1252 O St ..... 2148

**Linoleum**

STEVE'S FLOOR COVERINGS  
1247 O St ..... 2031

**Livestock Buyers**

AVILA MEAT CO  
Bella Vista Park ..... 2273

**Lumber**

YANCY LUMBER CO  
1632 N St ..... 4721

**NATIONAL ICE DELIVERY**

COMPLETE ICE SERVICE



Delivery To Homes & Businesses  
Frozen Food Locker Rentals

★ TRUCK & RAILROAD CAR ICING

★ CUSTOM ORCHARD SPRAYING

1408 "M" St.

Newman

Tel: 754

*Avila Meat Co.*

WHOLESALE BUTCHERS — LIVESTOCK DEALERS

"OUR VEAL ... FOR YOUR BEST DEAL"



BELLA VISTA PARK

NEWMAN

Tel.: 2273; Residence 2266

# EAST WEST

DAIRYMEN'S ASSOCIATION  
YOUR HOME INSTITUTION



## EASTWEST Butter

*Manufactured From Pure Sweet  
Cream*

GUSTINE HWY, P.O. Box 548, Newman Tel.: 767

# Bill's Refrigeration Service

*Milk Cooling Specialist*



COMMERCIAL REFRIGERATION  
AIR CONDITIONING

☆ 24 HOUR SERVICE ☆

BILL LOVELACE, Owner

106 MERCED ST., NEWMAN 2079

# ANTHIENY'S REAL ESTATE

LICENSED BROKER



Homes . . . Business Property . . . Lands  
Farms

NOTARY PUBLIC

GENEVIEVE ANTHIENY - Owner

1340 "D" St. NEWMAN Tel: 596  
Res: 743

## Meats—Butchering & Processing

AVILA'S MEAT CO  
Bella Vista Park ..... 2273

## Meats—Retail & Wholesale

AVILA'S MEAT CO  
Bella Vista Park ..... 2273  
CORREI'S  
1217 O St ..... 533

## Milk & Milk Products

EAST WEST DAIRYMEN'S ASSN  
Gustine Hwy ..... 767

## Mirrors

ACME GLASS CO  
710 G St, Modesto .... LA 3-5674  
(See Display - Reverse of Inserts)

## Motels

HAMLET MOTEL  
Hwy 33 ..... 4031

## Motor Rebuilding

TOW SERVICE GARAGE  
531 Crows Landing Rd,  
Modesto ..... LA 2-1865  
(See Display - Inside Front Cover)

## Motor Rewinding

NEWMAN ELECTRIC CO  
1221 N St ..... 690

## Motor Tuneups

PETER MARIETTA SHELL SERVICE  
1502 N St ..... 2018  
TOW SERVICE GARAGE  
531 Crows Landing Rd,  
Modesto ..... LA 2-1865  
(See Display - Inside Front Cover)

## Moving & Storage Service

MODESTO TRANSFER CO  
1403 - 9th St, Modesto LA 2-4146  
(See Display - Back Cover)

## Notions

CORREI'S  
1217 O St ..... 533

## Nurseries

HARMON'S NURSERY  
1232 O St ..... 744  
JACKSON & PERKINS CO  
Schmidt Rd ..... 2495

## Oils—Lubricating

R D BACIGALUPI  
Stanislaus & M Sts ..... 4121  
GENERAL PETROLEUM CORP  
745 Merced St,  
Newman Branch ..... 736  
P O Box 513,  
Westley Branch ..... TY 4-3451  
PETER MARIETTA SHELL SERVICE  
1502 N St ..... 2018  
MENEZES MOBIL SERVICE  
1361 K St ..... 2344

## Outboard Motors—Rental

BERRY & LEWIS RENTALS  
1116 McHenry Av,  
Modesto ..... LA 3-8038  
(See Display - Reverse of Double  
Truck)

## Oxygen—Equipped

COMMUNITY AMBULANCE SERVICE  
1614 H St, Modesto .... LA 3-9191



**Oxygen—Industrial & Medical**

BENSON & ZIMMERMAN  
11th & H St, Modesto...LA 4-3131  
(See Display - Page Facing Inside Back Cover)  
COMMUNITY AMBULANCE SERVICE  
1614 H St, Modesto...LA 3-9191  
(See Display - Professional Page)

**Packaging & Packing Service**

MODESTO TRANSFER CO  
1403 - 9th St, Modesto LA 2-4146  
(See Display - Back Cover)

**Painters Supplies**

VALLEY PAINT CO  
1029 - 11th St, Modesto LA 3-1809  
(See Display - Modesto Insert)

**Paints**

ACME GLASS CO  
710 G St, Modesto...LA 3-5674  
(See Display - Reverse of Inserts)  
VALLEY PAINT CO  
1029 - 11th St, Modesto LA 3-1809  
(See Display - Modesto Insert)

**Phonographs**

RADIO ELECTRONICS  
1226 H St, Modesto...LA 2-7678

**Plate Glass**

ACME GLASS CO  
710 G St, Modesto...LA 3-5674  
(See Display)

**Power Tools—Rentals**

BERRY & LEWIS RENTALS  
1116 McHenry Av,  
Modesto...LA 3-8038  
(See Display - Reverse of Double Truck)

**Proctologist**

W FRANCIS HALL D C  
119 McHenry Av, Modesto  
LA 2-2980

**Radios**

RADIO ELECTRONICS  
1226 H St, Modesto...LA 2-7678

**Railroad Tickets**

WALSER TRAVEL SERVICE  
Hotel Covell, Modesto...LA 3-0731

**Ranges**

BILL'S REFRIGERATION SERVICE  
1026 Merced St...2079

**Real Estate**

ANTHIENY'S REAL ESTATE  
1304 O St...596 & 743  
HARRY CIRAOLO  
514 McHenry Av, Modesto LA 2-4045  
NEWMAN REAL ESTATE CO  
1311 O St...574

**Reducing Equipment & Systems**

STAUFFER HOME PLAN  
1509 K St, Modesto...LA 4-1179

**Reducing Salons**

STAUFFER SYSTEM  
1505 K St, Modesto...LA 2-9025

**Refrigeration—Service**

BILL'S REFRIGERATION SERVICE  
1026 Merced St...2079

**Refrigerators**

BILL'S REFRIGERATION SERVICE  
1026 Merced St...2079  
I C REFRIGERATION SERVICE, INC  
741 S 99 Hwy, Modesto LA 2-1065  
(See Display - Inside Back Cover)  
NEWMAN REFRIGERATION SERVICE  
1349 O St...720

**Restaurant Equipment**

A P FISCHER, INC  
1310 - 9th St, Modesto LA 4-6274  
(See Display - Double Truck)

**Restaurants**

CLOVERLEAF CAFE  
933 Fresno St...851  
ELITE CAFE  
1413 O St...789  
MARTY'S INN  
Hwy 33...819  
NEWMAN COFFEE SHOP  
1421 O St...2641  
WALLY'S DRIVE IN  
Hwy 33...4761

**Reweaving**

WARD'S REWEAVING CO  
612 - 14th St, Modesto LA 3-2500

**Rugs & Carpets**

TROY BUNCH, The Seat Cover King  
13th & H Sts, Modesto...LA 4-2604  
(See Display - Backstrip)  
HOUSE OF CARPETS  
920 McHenry Av,  
Modesto...LA 3-5664

**Sashes—Aluminum, Steel, Louver and Casement**

ACME GLASS CO  
710 G St, Modesto...LA 3-5674  
(See Display - Reverse of Inserts)

**Sand & Gravel**

MARKS GRAVEL PIT  
Stubber Rd...2127

**Savings & Loan Associations**

MODESTO BLDG & LOAN ASSN  
821 - 10th St, Modesto LA 3-2648

**School Supplies**

CORREI'S  
1217 O St...533

**Screens**

VALLEY ASBESTOS CO  
1601 McHenry Av, Mod LA 4-5188

**Seat Covers—Auto, Airplane, Boats & Trucks**

TROY BUNCH, The Seat Cover King  
13th & H Sts, Modesto...LA 4-2604  
(See Display - Backstrip)

**Seeds**

L D MAFFAE SEED CO  
Hwy 33...4361  
WESTSIDE PRODUCTS CO  
1502 M St...774 & 775

**Service Stations**

D & B SERVICE  
Hwy 33...862  
JACK'S SHELL SERVICE  
1306 O St...2026

Patronize Your



Neighborhood

Merchant

**BUILD**

a better mouse trap  
and  
the world will beat  
a path to your door  
... if you advertise the  
mouse trap.

**R. D. BACIGALUPI**  
**JOBBER SHELL PETROLEUM PRODUCTS**



*Service Is My Business*

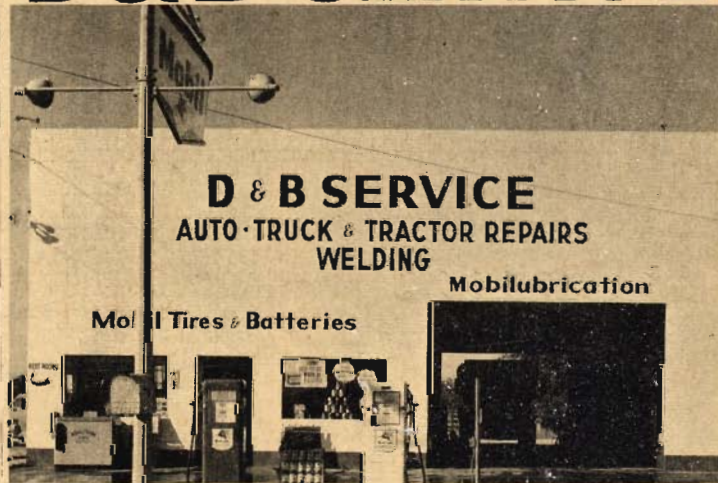
**TANK WAGON SERVICE**

R. D. "DICK" BACIGALUPI — OWNER

STANISLAUS & M,  
Newman, Calif.

Phone 4121  
If No Answer 2214

**D & B SERVICE**



**AUTO . . . DIESEL . . . TRUCK & TRACTOR**  
**REPAIRS**  
**MOBILGAS SERVICE STATION**  
● TIRES ● AUTOMOTIVE PARTS  
★ WELDING ★

Highway 33  
1 Mile North Of City

NEWMAN

Tel: 862  
After 8 p.m. . . 2472

# MENEZES

**MOBIL SERVICE**  
S & H Green Stamps



**Complete Line Of Mobil Products**

Lubrications . . . Washing & Polishing  
OPEN DAY & NIGHT . . . PICK-UP & DELIVERY SERVICE  
◆ MOBIL Tires & Batteries ◆ Auto Accessories ◆  
1361 "N" St. Tel: 2344

**NEWMAN**

## Peter Marietta Shell Service

**SHELL PREMIUM GASOLINE WITH TCP**

GOODYEAR TIRES & BATTERIES  
LUBRICATION — REPAIRS — ACCESSORIES  
Hours: 6 A. M. to 10 P. M.



**1502 N ST.**

**Newman**

**PHONE 2018**

### Service Stations — (Cont.)

PETER MARIETTA SHELL SERVICE  
1502 N St . . . . . 2018  
MENEZES MOBIL SERVICE  
1361 N St . . . . . 2344  
UNION SERVICE STATION  
1460 N St . . . . . 530  
WINTER'S RICHFIELD SERVICE  
1441 N St . . . . . 842

### Sewage Treatment Equipment and Supplies

DRY CHEMICAL PACIFIC  
105 G St, Modesto . . . LA 3-8389

### Sheet Metal Work

A P FISCHER, INC  
1310 - 9th St, Modesto .LA 4-6274  
(See Display - Double Truck)  
I C REFRIGERATION SERVICE, INC  
741 S 99 Hwy, Modesto .LA 2-1065  
(See Display - Inside Back Cover)  
NEWMAN SHEET METAL WORKS  
1420 O St . . . . . 2136

### Showcase Glass

ACME GLASS CO  
710 G St, Modesto . . . LA 3-5674  
(See Display - Reverse of Inserts)

### Sickroom Supplies

COMMUNITY AMBULANCE SERVICE  
1614 H St, Modesto . . LA 3-9191  
(See Display - Professional Page)

### Slip Covers

TROY BUNCH, The Seat Cover King  
13th & H Sts, Modesto LA 4-2604  
(See Display - Backstrip)

### Springs—Auto—Mfgs

C H WILLIAMS & SON  
632 - 11th St, Modesto .LA 3-8339

### Steamship Tickets

WALSER TRAVEL SERVICE  
Hotel Covell, Modesto . . LA 3-0731

### Steel Fabrication

A P FISCHER, INC  
1310 - 9th St, Modesto .LA 4-6274  
KROELLS PACKING SUPPLY  
N 99 Hwy, Bx 990, Turlock ME 4-5424  
TOWT WIND MACHINE  
N 99 Hwy, Bx 990, Turlock ME 4-5424  
(See Display - Turlock Insert)

### Store Fixtures

I C REFRIGERATION SERVICE, INC  
741 S 99 Hwy, Modesto .LA 2-1065  
(See Display - Inside Back Cover)

### Store Fronts

ACME GLASS CO  
710 G St, Modesto . . . LA 3-5674  
(See Display - Reverse of Inserts)  
A P FISCHER, INC  
1310 - 9th St, Modesto .LA 4-6274  
(See Display - Double Truck)

### Store Planning

I C REFRIGERATION SERVICE, INC  
741 S 99 Hwy, Modesto .LA 2-1065  
(See Display - Inside Back Cover)

### Tallow

NEWMAN TALLOW CO  
Hills Ferry Rd . . . . . 650

### Tape Recorders

RADIO ELECTRONICS  
1226 H St, Modesto . . . LA 2-7678

### Taverns

BEN'S CLUB  
1425 O St . . . . . 559  
DEL'S PLACE  
Hwy 33 . . . . . 2538  
TONY'S TAVERN  
1451 O St . . . . . 803

### Television & Antennas

RADIO ELECTRONICS  
1226 H St, Modesto . . . LA 2-7678

### Theatres

WEST SIDE THEATRE  
1329 O St . . . . . 544

### Tile—Acoustical

VALLEY ASBESTOS CO  
1601 McHenry Av, Mod. .LA 4-5188

### Tile

STEVE'S FLOOR COVERINGS  
1247 O St . . . . . 2031

### Tires—Sales & Repairs

D & B SERVICE  
Hwy 33 . . . . . 862  
GENERAL PETROLEUM CORP  
746 Merced St . . . . . 736  
PETER MARIETTA SHELL SERVICE  
1502 N St . . . . . 2018  
MENEZES MOBIL SERVICE  
1361 N St . . . . . 2344  
NEWMAN TIRE SALES & SERVICE  
1325 N St . . . . . 2193  
TOW SERVICE GARAGE  
531 Crows Landing Rd. .LA 2-1865  
(See Display - Inside Front Cover)

### Tractors

CORNFORTH TRACTOR CO  
1302 - 9th St, Modesto .LA 2-5225  
(See Display - Agricultural Page)

### Tractor—Rentals

BERRY & LEWIS RENTALS  
1116 McHenry Av, Mod .LA 3-8038  
(See Display - Reverse of Dbl Truck)

### Trailer Courts

LONE STAR TRAILER COURT  
1328 M St . . . . . 805

### Trailer Rentals

BERRY & LEWIS RENTALS  
1116 McHenry Av, Mod. .LA 3-8038  
(See Display - Reverse Double Truck)

### Transportation

MODESTO TRANSFER CO  
1403 - 9th St, Modesto .LA 2-4146  
(See Display - Back Cover)

### Trash Burners

CURRIERS OF MODESTO  
1912 Sunrise . . . . . LA 4-0738

### Travel Service.

WALSER TRAVEL SERVICE  
Hotel Covell, Modesto . . LA 3-0731

### Trucking

HOAGLAND'S TRANSPORT SERV, INC  
460 Bystrom Rd, Modesto LA 3-1845  
(See Display - Front Cover Strip)  
WESTERN MILK TRANSPORT  
1542 M St . . . . . 855

**Typewriters**

McDOWELL'S  
1116 G St, Modesto ... LA 2-3140

**Upholstery**

TROY BUNCH, The Seat Cover King  
13th & H St, Modesto ... LA 4-2604  
(See Display - Backstrip)  
HAWLEY'S UPHOLSTERY &  
DRAPERIES  
428 S 99 Hwy, Modesto ... LA 2-4425

**Venetian Blinds**

STEVE'S FLOOR COVERINGS  
1247 O St ..... 2031

**Vitamins**

TURLOCK HEALTH FOOD &  
SUPPLY CENTER  
112 S Center, Turlock ... ME 4-7765

**Wallpaper**

ACME GLASS CO  
710 G St, Modesto ... LA 3-5674  
(See Display - Reverse of Inserts)  
VALLEY PAINT CO  
1029 - 11th St, Modesto LA 3-1809  
(See Display - Modesto Insert)

**Washers**

RADIO ELECTRONICS  
1226 H St, Modesto ... LA 2-7678

**Weather Stripping**

VALLEY ASBESTOS CO  
1601 McHenry Av, Mod. LA 4-5188

**Welding**

D & B SERVICE  
Hwy 33 ..... 862

NEWMAN WELDING WORKS  
Yolo & N Sts ..... 594  
C H WILLIAMS & SON  
632 - 11th St, Modesto. LA 3-8339

**Wheel Alignment**

TOW SERVICE GARAGE  
531 Crows Landing Rd. LA 2-1865  
Modesto  
(See Display - Inside Front Cover)

**Wind Machines**

KROELLS PACKING SUPPLY  
N 99 Hwy, Bx 990, Turlock ME 4-5424  
TOWT WIND MACHINE  
N 99 Hwy, Bx 990, Turlock ME 4-5424  
(See Display - Turlock Insert)

**Window Glass**

ACME GLASS CO  
710 G St, Modesto ... LA 3-5674  
(See Display - Reverse of Inserts)

**Window Shades**

STEVE'S FLOOR COVERINGS  
1247 O St ..... 2031

**Windshields**

ACME GLASS CO  
710 G St, Modesto ... LA 3-5674  
(See Display - Reverse of Inserts)

*Valley Asbestos Co.*

Contractors & Distributors  
For Stanislaus County Of

Monarch Tubular Weatherstripping

★ ★ ★

**ALUMABDL**

● THE WORLD'S MOST BEAUTIFUL  
ALUMINUM AWNING!

● JOHNS-MANVILLE APPROVED  
Applicators of *Spintex*  
BLOWN ROCK WOOL INSULATION

(SEE FREE CARD OFFER ON YELLOW INSERT PAGE)

1601 McHENRY

LA 4-5188

**USE THIS DIRECTORY FOR YOUR BUYING NEEDS**

**HOAGLAND'S TRANSPORT SERVICE INC.**  
STATE WIDE SERVICE



**GENERAL  
HAULING**



**Agriculture  
Hauling**



**Cranes**



**460 Bystrom Road**



**Flatbed  
Trailers**



**Lo-Bed  
Trailers  
& Winches**



**Lift Trucks**



**LA 3-1845**

MODESTO  
P.O. Box 175