

C E R E S

G E N E R A L I N F O R M A T I O N

OFFICIALS

CITY OF CERES
(County of Stanislaus)
Incorporated February 26, 1918
General Law City, Population 3,551
Council meets 2nd Monday of Month
Mayor, Walter White
Councilman George Ricketts
Councilman William Madu
Councilman Henry Triplett
Councilman Howard Rodgers
City Clerk Leona Garrison
Attorney Myron Moyle
Police Chief LeRoy Cunningham
Fire Chief June Barnes
Treasurer Margaret Barham
Assessor Leona Garrison
Tax Collector Margaret Barham
Engineer Lawrence Adams
Street Supt'd Howard Rodgers
Electrical Henry McNeal
Bldg Inspector Henry McNeal
Park Commissioner Roe Ricketts
Sewer Commissioner, Henry Triplett
Street Commissioner, Howard Rodgers
Police Commissioner, Wm Madu
School Supt'd Herndon Ray

CHURCHES

BAPTIST
BETHEL SOUTHERN BAPTIST
6th and Park Sts KE 7-3640
Noel Mills, pastor
SUNDAY SERVICES
9:45 a.m. Sunday School
11:00 a.m. Morning Worship
6:45 p.m. Baptist Training
8:00 p.m. Evening Worship
7:00 p.m. R A S Monday
2:00 p.m. WMU Thursday
FIRST BAPTIST
5th and North Sts KE 7-0833
Rev Harold E Hayes, pastor
SUNDAY SERVICES
9:45 a.m. Sunday School Classes
for all ages
11:00 a.m. Morning Worship
11:00 a.m. Beginners and Junior
Church Services
7:00 p.m. Youth Meetings
8:00 p.m. Evening Service
8:00 p.m. Prayer Meeting Service
Wednesday
FIRST MISSIONARY BAPTIST
670 Central Ave
Bedford Andrews, pastor
SUNDAY SERVICES
9:45 a.m. Sunday School
11:00 a.m. Worship Services
7:00 p.m. Training Course
7:30 p.m. Bible, Wednesday
FREE WILL BAPTIST
Leo and Sam Aves
Rev F A McCage LA 3-6603
SUNDAY SERVICES
9:45 a.m. Sunday School
11:00 a.m. Morning Worship
6:30 p.m. League Services
1:30 p.m. Evening Services
7:30 p.m. Prayer Meeting Service
Wednesday

UNITY BAPTIST CHURCH
Corner Mitchell and Garrison Sts
Gordon Thompson pastor KE 7-3516

CATHOLIC
ST JUDE'S CATHOLIC
Central at West Av
Rev McKenna pastor
7:30 and 10:30 a.m. First Sunday
monthly, two Masses
10:30 a.m. 2d, 3d and 4th Sunday
Masses
7:00 a.m. Saturday Masses
7:00 a.m. Holy Days of Obligation
CHURCH OF CHRIST
CHURCH OF CHRIST
6th and Park Sts
C B Head, minister KE 7-1659
SUNDAY SERVICES
10:30 a.m. Service begins
10:45 a.m. Morning Worship
11:30 a.m. Communion
7:00 p.m. Evening Service

FIRST CHURCH OF CHRIST
Third and Magnolia Sts
Harry Bucalstein, minister
SUNDAY SERVICES
9:45 a.m. Bible School
10:45 a.m. Morning Worship Service
10:45 a.m. Junior Worship Service
7:00 a.m. Youth Groups
8:00 p.m. Evangelistic Service
8:00 p.m. Midweek Bible Study
Wednesday

METHODIST
FIRST METHODIST
Sixth and Lawrence Sts
William G Dalton, pastor KE 7-0185
SUNDAY SERVICES
9:45 a.m. Sunday School
11:00 a.m. Morning Worship Service
7:00 p.m. Methodist Youth Wor-
ship
6:30 p.m. Christian Adventure
Group

OTHER CHURCHES
**BETHEL TABERNACLE PENTECOST-
AL CHURCH OF GOD**
Collins and Service Rds
PO Bx 654 KKE 7-0118
Rev and Mrs H O Hadsen pastors
SUNDAY SERVICES
9:45 a.m. Sunday School Classes
for all ages
11:00 a.m. Morning Worship
6:30 p.m. Junior Meeting
7:30 p.m. Evangelistic Service
7:30 p.m. Evangelistic Service,
Tuesday
7:30 p.m. Young People's Service
Thursday

DUNKARD BRETHERN
1½ mile East on Roeding Rd
..... LA 3-2975
Hayes Reed, Elder
SUNDAY SERVICES
10:00 a.m. Sunday School
11:00 a.m. Morning Worship Service
7:00 p.m. Bible Study
7:45 p.m. Preaching Service
8:00 p.m. Prayer Meeting and Bible
Study, Wednesday

GLAD TIDINGS ASSEMBLY OF GOD
Corner 2d and 99 Hwy
Dan Robinson, pastor KE 7-0381
SUNDAY SERVICES
9:45 a.m. Sunday School
11:00 a.m. Worship
6:30 p.m. Young People
8:00 p.m. Bible Study, Wednesday
8:00 p.m. Young People, Friday
VILLAGE CHAPEL
Temporarily located at Ceres Ameri-
can Legion Hall, 9th and Lawrence
Sts KE 7-0997
Rev Joe Mooneyham, pastor
SUNDAY SERVICES
9:45 a.m. Sunday School
11:00 a.m. Worship Service
6:00 p.m. League Service
7:00 p.m. Worship Service

PERSEPHONE GUILD
Meets 2d Wednesdays afternoon
homes of members
POLICE ANXILIARY
Meets 1st Wednesday homes of
members
POLICE RESERVES
Meets 2d and 4th Thursdays City
Council room
REBECCAS—Noble Grand
Meets 1st and 3d Wednesday eves
2314 Lawrence (Odd Fellow Hall)
SMYRNA CHAPTER OES
Meets 1st and 3d Thursdays 2904
3d St
SPORTSMEN'S CLUB
Meets 1st and 3d Mondays Ceres
Community Center
TUOLUMME RIVER LODGE
Meets as called
VAQUEROS RIDING CLUB
Meets 1st Mondays 8:00 p.m.
Vaqueros Club House Gondring Rd
WCTU
Meets 2d Wednesday afternoons
homes of members
WHITMORE PTA
Meets 2d Monday evenings Walter
White All Purpose Room

ORGANIZATIONS AND CLUBS

ORGANIZATIONS & CLUBS CERES
AMERICAN LEGION
Meets 2nd and 4th Tuesday Eves
Legion Hall Ceres
AMERICAN LEGION AUXILIARY
Meets 2nd and 4th Tuesday Eves
Legion Hall Ceres
CASWELL PTA
Meets 1st Monday Eve at School
CERES GARDEN CLUB
Meets 3d Friday Afternoons at
homes of members
**CERES HIGH SCHOOL PARENTS
CLUB**
Meets Evenings at High School
CERES STUDY CLUB
Meets 4th Tuesdays members h.m.s.
CERES WOMEN'S CLUB
2nd Wednesdays Members Homes
CHAMBER OF COMMERCE
Meets 3d Mondays 7:30 p.m. City
Council Chambers
CIRCLE & SQUARE DANCES
Meets 2d and 3d Saturday nights
Walter White School
DON PEDRO PTA
Meets 2d Monday Eve School
FIRE DEPT AUXILIARY
Meets 3d Tuesdays homes of
Members
JOB'S DAUGHTERS
Meets 4th Thursday night Bethel
Hall
JOB'S DAUGHTERS MOTHERS CLUB
Meets 3d Monday Eves homes of
members
**MAJOR HUGH MOSS CHAPTER
DAR**
Meets 2d Saturday 1:00 p.m at
homes of members
MASONIC LODGE
Meets every Tuesday eves Lodge
Hall 2904 3d St
MYSTIC CLUB
Meets 2d Wednesdays 2:00 p.m.
homes of members or Masonic Hall
**PARENTS CLUB WALTER WHITE
SCHOOL**
Meets 4 times yearly at Walter
White All Purpöse Room

C E R E S STREET GUIDE

SECOND ST
Begins at US Hwy 99, running N.
Intersected by Magnolia St; ends
at Whitmore Av.
THIRD ST
Begins at US Hwy 99, running N.
Intersected by North St, Magnolia
St; Whitmore Av; to dead end.
FOURTH ST
Begins at US Hwy 99, running N.
Intersected by Lawrence St, North
St, Magnolia St, Whitmore Av; to
dead end.
FIFTH ST
Begins at Park St, running N.
Intersected by Lawrence St, North
St, Magnolia St, Whitmore Av,
Thomas Av; ends at Caswell Av.
SIXTH ST
Begins at Roeding Av, running N.
Intersected by Park St, Lawrence
St, North St, Magnolia St, Whit-
more Av, Jennie St; ends at
Thomas Av.
SEVENTH ST, N
Begins at Magnolia St, running N
to Whitmore Av; Begins again at
Jennie St; ends at Thomas Av.
SEVENTH ST, S
Begins at Lawrence St, running S.
Intersected by Park St; ends at
Roeding Av.
EIGHTH ST
Begins at Lawrence St, running S.
Intersected by Park St; ends at
Roeding Av.

NINTH ST
Begins at Magnolia St, running S. Intersected by North St, Lawrence St, Park St, Roeding Av, Don Pedro Rd; ends at US Hwy 99.

TENTH ST, N
Begins at North St, running N. Intersected by Magnolia St; ends at Whitmore Av.

TENTH ST, S
Begins at Lawrence St, running S. Intersected by Roeding Av; ends at Don Pedro Rd.

CASWELL AV
Begins at N Central, running E. Intersected by Fifth St; ends at Moffett Rd.

CENTRAL AV.
Begins at Railroad Av, running S. Intersected by West Av, Hackett Rd, Pine St, Pleasant Av, Industrial Way, Walnut Av, Laurel Av, Don Pedro Rd; continues into County.

CENTRAL AV, N
Begins at US 99 Hwy, running N. Intersected by Magnolia St, Poplar St, Whitmore Av, Hollister St, Sequoia St, Darrah St; continues into County.

CHARLOTTE AV
Begins at Whitmore Av, curving N, then E. Intersected by Rose Av; to dead end.

DALE AV
Begins at Whitmore Av, curving N, then E. Intersected by Eloise St, Rose St; to dead end.

DARRAH ST
Begins at N Central Av, running W. Intersected by Lois Way; ends at Memorial Dr.

DON PEDRO RD
Begins at US Hwy 99, running E. Intersected by Ninth St, Tenth St; continues into County.

DON PEDRO RD, W
Begins at Central Av, running W to dead end; and running E to dead end.

EL CAMINO ST
Begins at US Hwy 99 running NE. Intersected by Poplar St; ends at Whitmore Av.

ELOISE ST
Begins at Joy Av, running NW, then N. Intersected by Dale Av; ends at Garrison St.

FARRIS AV
Begins at Kinser Rd, running S. Intersected by Hackett Rd; to dead end.

GARRISON ST
Begins at Moffett Rd, running E. Intersected by Eloise St, Rose St; to dead end.

HACKETT RD
Begins at US 99 Hwy, running SW, then W. Intersected by West Av, Harold Av, Central Av, Farris Av; continues into County.

HAROLD AV
Begins at Hackett Rd, running SE; ends at Pine St.

HEMLOCK ST
Begins at Industrial Way, running S; ends at Laurel Av.

HOLLISTER ST
Begins at N Central St, running W. Intersected by Lois Way; to dead end.

INDUSTRIAL WAY
Begins at RX Central Av, running E. Intersected by Tamarack St, Spruce St, Hemlock St, Larch St; ends at Railroad Av.

JOY AV
Begins at Whitmore Av, curving N, then E. Intersected by Eloise St, Rose St; to dead end.

JENNIE ST
Begins at Sixth St, running E; ends at Seventh St.

KAY ST
Begins at Whitmore Av, running S. Intersected by Magnolia St; ends at North St.

LARCH ST
Begins at Industrial Way, running S; ends at Laurel Av.

LAUREL AV
Begins at Central Av, running E. Intersected by Tamarack St, Spruce St, Hemlock St, Larch St; ends at Railroad Av.

LAWRENCE ST
Begins at US 99 Hwy, running E. Intersected by Fourth St, Fifth St, Sixth St, Seventh St, Eighth St, Ninth St; ends at Tenth St.

LILAC CT
Begins at Whitmore Av, running N to dead end.

LOIS WAY
Begins at Darrah St, running S. Intersected by Sequoia St, Hollister St; to dead end.

MAGNOLIA ST
Begins at US 99 Hwy, running E. Intersected by N Central Av, Second St, Third St, Fourth St, Fifth St, Sixth St, Seventh St, Ninth St, Kay St; ends at Tenth St.

MEMORIAL DRIVE
Begins at Darrah St, running S; ends at Sequoia St.

MOFFETT ST
Begins at Magnolia St, running N. Intersected by Whitmore Av, Garrison St, Thomas Av, Caswell Av; continues into County.

NORTH ST
Begins at Sixth St, running W. Intersected by Fifth St, Fourth St, Third St; ends at Second St.

PARK ST
Begins at Fifth St, running E. Intersected by Sixth St, Seventh St, Eighth St; ends at Ninth St.

PINE ST
Begins at Railroad Av, running SW. Intersected by Harold Av; ends at Central Av.

PLEASANT AV
Begins at Central Av, running W to dead end.

POPLAR ST
Begins at US 99 Hwy, running E. Intersected by El Camino St; ends at North Central Av.

ROBERTS RD
Begins at US 99 Hwy, running NE, then NW; ends at Roeding Av.

ROEDING AV
Begins at Fifth St, running E. Intersected by Seventh St, Eighth St, Ninth St, Tenth St, Kasaba Ct; continues into County.

ROSE ST
Begins at Whitmore Av, running N. Intersected by Charlotte Av, Joy Av, Dale Av; ends at Garrison St.

SEQUOIA ST
Begins at N Central Av, running W. Intersected by Lois Way; ends at Memorial Drive.

SPRUCE ST
Begins at Industrial Way, running S; ends at Laurel Av.

TAMARACK ST
Begins at Industrial Way, running S; ends at Laurel Av.

THOMAS AV
Begins at Fifth St, running E. Intersected by Sixth St, Seventh St; ends at Moffett Rd.

WALNUT AV
Begins at Central Av, running W to dead end.

WEST AV
Begins at Central Av, running SE; ends at Hackett Rd.

WHITMORE AV, W
Begins at US 99 Hwy, running W. Intersected by Railroad Av; continues into County.

WHITMORE AV, E
Begins at US 99 Hwy, running E. Intersected by El Camino St, N Central Av, Second St, Third St, Fourth St, Fifth St, Sixth St, Seventh St, Ninth St, Dale Av, Kay St, Joy Av, Tenth St, Charlotte Av, Lilac Ct, Rose St; to dead end.

CERES CLASSIFIED DIRECTORY

Adding Machines

McDOWELL'S
1116 G St, Modesto LA 2-3140

Agricultural Implements

CORNFORTH TRACTOR CO
1302 - 9th St Modesto LA 2-5225
(See Display - Agricultural Page)

Air Compressors

BENSON & ZIMMERMAN
11th & H Sts, Modesto LA 4-3131
(See Display Page Facing Inside Back Cover)

I C REFRIGERATION, INC
741 S 99 Hwy, Modesto LA 2-1065
(See Display - Inside Back Cover)

TRIMBLE EQPT SALES & RENTALS
Evans Rd KE 7-0415

Air Compressors - Rental

BERRY & LEWIS RENTALS
1116 McHenry Av, Mod LA 3-8038
(See Display - Reverse Dble Truck)

Air Conditioning

A P FISCHER
1310 - 9th St, Modesto LA 4-6274
(See Display - Double Truck)

I C REFRIGERATION, INC
741 S 99 Hwy, Mod LA 2-1065
(See Display - Inside Back Cover)

TRIPLE 'R' SHEET METAL
5th & 99 Hwy KE 7-2727

VALLEY ASBESTOS CO
1601 McHenry Av, Mod LA 4-5188

Airline Ticket Agencies

WALSER TRAVEL SERVICE
Hotel Covell, Modesto LA 3-0731

Ambulance Service

COMMUNITY AMBULANCE SERVICE
1614 H St Modesto LA 3-9191
(See Display - Professional Page)

Auto Accessories

LANE'S FLYING A SERVICE
Lawrence St & 99th Hwy KE 7-0132

Auto Body & Fender Repair

HANCOCK GARAGE
3052 - 5th St KE 7-0342

SMITH & MILLER PAINT & BODY SHOP
3078 S 99 Hwy KE 7-2101

TOW SERVICE GARAGE
531 Crows Landing, Mod LA 2-1865
(See Display - Inside Front Cover)

Auto Convertible Tops

TROY BUNCH, The Seat Cover King
13th & H Sts, Modesto LA 4-2604
(See Display - Backstrip, Postcard)

Auto - Electric

HANCOCK GARAGE
3052 - 5th St KE 7-0342

TOW SERVICE GARAGE
531 Crows Landing, Mod LA 2-1865
(See Display - Inside Front Cover)

Auto Finishes

VALLEY PAINT CO
1029 - 11th St, Mod LA 3-1809
(See Display - Modesto Insert)

Auto Frame Straightening

TOW SERVICE GARAGE
531 Crows Landing, Mod, LA 2-1865
(See Display - Inside Front Cover)
C H WILLIAMS & SON
632 - 11th St, Modesto .LA 3-8339

Auto Glass

ACME GLASS COMPANY
710 - G St, Modesto .LA 3-5674
(See Display - Reverse of Inserts)

Auto Painting

BENSON & ZIMMERMAN
11th & H Sts, Modesto .LA 4-3131
(See Display - Page Facing Inside Back Cover)
TOW SERVICE GARAGE
531 Crows Landing, Mod, LA 2-1865
(See Display - Inside Front Cover)
C H WILLIAMS & SON
632 - 11th St, Modesto .LA 3-8339

Auto Parts

BENSON & ZIMMERMAN
11th & H Sts, Modesto .LA 4-3131
(See Display - Page Facing Inside Back Cover)
HANCOCK GARAGE
3052 - 5th StKE 7-0342

Auto Radiator Work

C H WILLIAMS & SON
632 - 11th St, Modesto .LA 3-8339

Auto Radio Repairs

JACK'S RADIO & TELEVISION
3037 - 5th StKE 7-3931

Auto Repairs

CERES AUTOMOTIVE SERVICE
2305 Lawrence AvKE 7-0402
HANCOCK GARAGE
3052 - 5th StKE 7-0342

Auto Springs Mfg

C H WILLIAMS & SON
632 - 11th St, Modesto .LA 3-8339

Auto Towing

CERES TOW SERVICE
99 Hwy & Central AvKE 7-1632
TOW SERVICE GARAGE
531 Crows Landing, Mod, LA 3-1865
(See Display - Inside Front Cover)

Auto Transmission Work

HANCOCK GARAGE
3052 - 5th StKE 7-0342

Auto Upholstery

TROY BUNCH, The Seat Cover King
13th & H StsLA 4-2604
(See Display - Back Strip)

Auto Wash

McHENRY 3-MINUTE CAR WASH
McHenry & Morris Aves
ModestoLA 3-7856
SUPER SPEED AUTO LAUNDRY
4th & H Sts ModestoLA 3-6300

Auto Wheel Axle & Frame Repair

HANCOCK GARAGE
3052 - 5th StKE 7-0342

Awnings & Aluminum

VALLEY ASBESTOS CO
1601 McHenry Av, Mod .LA 4-5188

Bakeries

COTTAGE CAKERY
2946 - 4th StKE 7-1548

Banking

MODESTO BLDG & LOAN ASSN.
831 - 10th St, Modesto .LA 3-2648

Banks

BANK OF CERES
3004 - 4th StKE 7-1710

Barbecue Equipment

CURRIERS OF MODESTO
1912 Sunrise AvLA 4-0730

Batteries

BENSON & ZIMMERMAN
11th & H Sts Modesto
(See Display - Page Facing Inside Back Cover)

HANCOCK GARAGE
3052 - 5th StKE 7-0342

LANE'S FLYING A SERVICE
Lawrence St & 99 Hwy, KE 7-0123

NIBLER'S SHELL SERVICE STATION
S 99 Hwy & HackettKE 7-0121

TOW SERVICE GARAGE
531 Crows Landing, Mod, LA 2-1865
(See Display - Inside Front Cover)

Beauty Shops

FASHION'S FINEST SALON of Beauty
429 McHenry Av, Mod .LA 4-1409

JOAN'S BEAUTY SHOP
2310 Lawrence AveKE 7-0532

PARK VIEW Beauty & Reducing Salon
2928 - 3rd StKE 7-2143

Blacksmithing

C H WILLIAMS & SON
632 - 11th St, Modesto .LA 3-8339

Blacksmithing Eqpt.

TRIMBLE EQPT SALES & RENTALS
Evans RdKE 7-0415

Brake Work

TOW SERVICE GARAGE
531 Crows Landing, Mod, LA 2-1865
(See Display - Inside Front Cover)

Building & Loan Assn.

MODESTO BDLG & LOAN ASSN
821 - 10th St, Modesto .LA 3-2648

Building Materials

M & N DISTRIBUTORS
1944 Whitmore RdKE 7-1525
BUSINESS OPPORTUNITY BROKERS
Harry Ciralo
514 McHenry Av, Mod .LA 2-4050

Butchering - Custom

JOE'S LOCKER PLANT
Morgan Rd off Service .KE 7-3536

Cabinets

ATLAS CABINET SHOP
Whitmore Av off 99 Hwy, KE 7-1002

Candy

POP'S SNACK SHACK
2254 Whitmore RdKE 7-1790

Carpets - Cleaning & Repairing

HOUSE OF CARPETS
920 McHenry Av, ModLA 3-5664

PARK VIEW BEAUTY & REDUCING SALON

"Lovely Hair Styling & Figure Control Our Specialty"



Complete Beauty Service In Our Salon

- PERMANENT WAVING ● MANICURES ● TINTING
- ALL Beauty Services

THE FAMOUS "SECRET OF BALI" Reducing Treatments

☆ COSMETICS BY ROBERTA
OF OUR CHARM AND MODELING SCHOOL

VERA PERKINS, Owner & Director

2928 - 3rd St. (Opposite Ceres Park)

CERES

Tel: KE 7-2143

S. A. WARTHAN PLUMBING CONTRACTOR

Over 40 Years Of Plumbing Experience



We Cover Stanislaus County . . .

● RESIDENTIAL ● COMMERCIAL

* * *

● FREE ESTIMATES GLADLY GIVEN ●

2525 10th ST. CERES KE 7-1692 — KE 7-2031

CERES DEHYDRATOR

Serving The Area Over 15 Years



DEHYDRATED APRICOTS - GRAPES - PEACHES

★ Ranchers . . . We Buy For Cash!

CUSTOM DEHYDRATION TO ORDER

OWNED & OPERATED BY
CLAUDE & CLARE BERRYHILL

WHITMORE RD.
P. O. Box 368 - - - CERES

KE 7-1451

Carports

VALLEY ASBESTOS
1601 McHenry Av, Mod. LA 4-5188

Chain Saws

TRIMBLE EQPT SALES & RENTALS
Evans Road KE 7-0415

Chain Saw Rentals

BERRY & LEWIS RENTALS
1116 McHenry Av, Mod. LA 3-8038
(See Display - Reverse Double Truck)

Charm Schools

PARKVIEW BEAUTY & Reducing Salon
2928 - 3rd St KE 7-2143

Chemicals

DRY CHEMICAL PACIFIC
105 G St, Modesto LA 3-8389

Cleaners & Dyers

H & H CLEANERS
2371 Lawrence Av KE 7-3793

Clothing - Children

HELEN'S TINY TO TEEN SHOP
2940 - 4th St KE 7-1920

Clothing - Men's

JOE BERG'S WORKING MAN'S STORE
3024 - 4th St KE 7-2182
MOORE'S FOR MEN & WOMEN
2938 - 4th St KE 7-2916

Clothing - Women's

FLORENCE'S DRESS SHOP
2959 - 4th St KE 7-0811

Concrete Mixers

TRIMBLE EQPT SALES & RENTALS
Evans Road KE 7-0415

Contractors - Awnings

VALLEY ASBESTOS CO
1601 McHenry Av, Mod. LA 4-5188

Contractors - General

E K BEEBE
S Central Av, PO Bx 744 . KE 7-3156
JOHNSON & NAPE
Whitmore Road KE 7-4510
L W STOVER
2041 Hackett Av KE 7-1102

Contractors - Ditching

BUTCHER TRENCHING
Rt 7, Box 1760 KE 7-1752

Contractors - Lathing

DOUGLAS C VIENT
3037 - 5th St KE 7-2289.

Contractors - Metal

A P FISCHER, INC
1310 - 9th St, Modesto . LA 4-6274
(See Display - Double Truck)

Contractors - Pipe

Laying

BUTCHER TRENCHING
Rt 7, Box 1760 KE 7-1752

Contractors - Plumbing

S A WARTHAN
2525 - 10th St KE 7-1692

Contractors - Trenching

BUTCHER TRENCHING
Rt 7, Box 1760 KE 7-1752

Cosmetics

PARK VIEW Beauty & Reducing Salon
2928 - 3rd St KE 7-2143

Crating

MODESTO TRANSFER CO
1403 - 9th St, Modesto . LA 2-4146
(See Display - Back Cover)

Crop Dusting

PHILLIPS AERO AGRICULTURAL SER
Redwood Rd, Box 792A . KE 7-4511

Curtains

TROY BUNCH, Beauti Pleat Draperies
1215 H Sts, Modesto . LA 2-1472
(See Display - Back Strip)

Dance Supplies

THE STAGE DOOR
2369 Lawrence St KE 7-0140

Ditching

BUTCHER TRENCHING
Rt 7, Box 1760 KE 7-1752

Dedhydrators

CERES DEHYDRATOR
PO Box 368 KE 7-1451

Department Stores

MINER'S DEPT STORE
3030 - 4th St KE 7-1689

Display Cases - Refrigerated

I C REFRIGERATION, INC
741 S 99 Hwy, Mod LA 2-1065
(See Display - Inside Back Cover)

Doors - Aluminum, Steel, Sliding & Shower

ACME GLASS COMPANY
710 G St, Modesto LA 3-5674
(See Display - Reverse Side Inserts)

Doors - Folding, Plastic & Wooden

VALLEY ASBESTOS COMPANY
1601 McHenry Av, Mod. LA 4-5188

Drainboards - Stainless Steel

A P FISCHER, INC
1310 - 9th St, Modesto . LA 4-6274
(See Display - Double Truck)

Draperies

TROY BUNCH, Beauti Pleat Draperies
1215 H St, Modesto . . LA 2-1472
(See Display - Backstrip)
HAWLEYS UPHOLSTERY & Draperies
428 S 99 Hwy, Modesto . LA 2-4425

Dresses

FLORENCE'S DRESS SHOP
2959 - 4th St KE 7-0811

Drills

TRIMBLE EQPT SALES & RENTALS
Evans Rd KE 7-0415

Drug Stores

CERES DRUG STORE
2961 - 4th St KE 7-0718
COAST DRUG STORES, INC
McHenry Village, Mod . . LA 3-1723
(See Display - Reverse Side Title Page)

TRIMBLE EQUIPMENT RENTAL & Sales Co.

Contractors - Industrial - Agricultural
 "The House Of A Thousand Tools For Rent"

PHONE

KE 7-0415

BEFORE 8 AM - AFTER 6 PM

PHONE

KE 7-3240

ALL TYPES OF RENTALS . . .

AIR COMPRESSORS - SAND BLASTING & CEMENT
 EQUIPMENT - ELECTRIC & GASOLINE HAND TOOLS
 GARDEN TOOLS - PAINTING EQUIPMENT - WATER
 PUMPS - PLUMBING TOOLS - TILLERS, TRACTORS
 & SPRAYERS - MISCELLANEOUS TOOLS OF ALL KINDS.

● SALES & SERVICE OF POWER ●

GARDEN EQUIPMENT —

— GARDEN SUPPLIES

DEPOSIT REQUIRED ON ALL RENTALS



★ FREE Use Of Rollers & Spreaders With Purchase Of Grass Seed Or Fertilizers

SOUTH OF MODESTO . . . NEAR MEMORIAL HOSPITAL
 EVANS ROAD - Off 99 Highway

KE 7-0415

Drug Sundries

SEQUOIA SUPER MARKET
 2000 N Central Av . . . KE 7-2761

Dryers

RADIO ELECTRONICS
 1226 H St, Modesto . . . LA 2-7678

Electric Appliances

RADIO ELECTRONICS
 1226 H St, Modesto . . . LA 2-7678

Electric Hand Tools

TRIMBLE EQPT SALES & RENTALS
 Evans Rd KE 7-0415

Electric Service

ELLIOTT'S ELECTRIC SERVICE
 2801 - 10th St KE 7-4482
 WALBURN NEON & ELECTRIC CO
 2728 N 99 Hwy KE 7-1188

Engineering

I C REFRIGERATION, INC
 741 S 99 Hwy, Modesto . . . LA 2-1065
 (See Display - Inside Back Cover)

Ennz Products

DRY CHEMICAL PACIFIC
 105 G St, Modesto . . . LA 3-8389

Equipment Rentals

BERRY & LEWIS
 1116 McHenry Av, Mod . . . LA 3-8038
 (See Display - Reverse Double Truck)
 TRIMBLE EQPT SALES & RENTALS
 Evans Rd KE 7-0415

Farm Equipment

KROELLS PACKING SUPPLY &
 TOWT WIND MACHINE
 N 99 Hwy, Bx 990, Turlock ME 4-5425
 (See Display - Turlock Insert)

Farm Implements - Sales & Service

CORNFORTH TRACTOR CO
 1302 - 9th St, Modesto . . . LA 2-5225
 (See Display - Agriculture Page)

Farm Machinery Parts & Tires

CORNFORTH TRACTOR CO
 1302 - 9th St, Mod . . . LA 2-5225
 (See Display - Agriculture Page)

Fertilizers

CHIPPONERI & ROBINSON
 Rt 2, Box 538 KE 7-2988

Fiberglass

VALLEY ASBESTOS CO
 1601 McHenry Av LA 4-5188

Frost Protection

KROELLS PACKING SUPPLY &
 TOWT WIND MACHINE, N 99 Hwy,
 Box 990, Turlock ME 4-5425
 (See Display - Turlock Insert)

Floor Coverings

HOUSE OF CARPETS
 920 McHenry Av, Mod . . . LA 3-5664

Frozen Food Lockers - Rental

JOE'S LOCKER PLANT
 Morgan Rd & Service . . . KE 7-3536

Frozen Foods

CERES FROZEN FOOD BANK
 250 Center Av KE 7-0352

34,000

HOMES THROUGHOUT THE
 COUNTY RECEIVE IN THE

MAIL THE

MODESTO TRIBUNE

OR THE

MODESTO SHOPPING GUIDE

EACH THURSDAY

In Ceres It's...

THE HANCOCK GARAGE



ROLLA HANCOCK, Owner

3052 5th St.

KE 7-0342

AUTO REPAIRS
AUTOMATIC TRANSMISSIONS
ENGINE REBORING
IGNITION REPAIRS
MOTOR TUNE-UPS
WHEEL ALIGNMENT
AUTO PARTS
BATTERIES
TIRES

Frozen Foods

JOE'S LOCKER PLANT
 Rt 2, Box 1078KE 7-3536
 MINIMAX INC
 2504 Mary AvKE 7-4786
 SEQUOIA SUPER MARKET
 2000 N Central AvKE 7-2761
 VALLEY FURNITURE & APPLIANCE
 2952 - 4th StKE 7-0197

Furnaces

TRIPLE 'R' SHEET METAL
 5th & 99 HwyKE 7-2727

Furniture - Foam Rubber

TROY BUNCH, The Seat Cover King
 13th & H Sts, Modesto...LA 4-2604
 (See Display - Backstrip)

Garages

TOW SERVICE GARAGE
 531 Crows Landing, Mod...LA 2-1865
 (See Display - Inside Front Cover)
 C H WILLIAMS & SON
 632 - 11th St, Modesto...LA 3-8339

Garage & Service Station Equipment

BENSON & ZIMMERMAN
 11th & H St, Modesto...LA 4-3131
 (See Display - Page Facing Inside Back Cover)

Garden Eqpt Rental

BERRY & LEWIS RENTALS
 1116 McHenry Av, Mod LA 3-8038
 (See Display - Reverse Double Truck)
 TRIMBLE EQPT SALES & RENTALS
 Evans RdKE 7-0415

Gasoline - Oil

SUNLAND REFINING CORP
 2955 S 99 HwyKE 7-0771

Generators

TRIMBLE EQPT SALES & RENTALS
 Evans RoadKE 7-0415

Gifts - Domestic & Imported - Ret & Whsle

TURLOCK HEALTH FOOD & SUPPLY CENTER—112 S Center St
 Turlock ME 4-7765

Glass

ACME GLASS COMPANY
 710 G St, ModestoLA 3-5674
 (See Display - Reverse of Inserts)

Glazing - Contractors

ACME GLASS COMPANY
 710 G St, ModestoLA 3-5674
 (See Display - Reverse of Inserts)

Grocers

BEST BUY MARKET
 2964 - 4th StKE 7-0412
 CENTER MARKET
 2223 Hackett RoadKE 7-0512
 GARRISON'S GROCERY STORE
 2744 N Central AvKE 7-2258
 RALPH'S GROCERIES
 Roeding Av & 6th St...KE 7-0910
 RICHLAND MARKET
 1805 Richland AvKE 7-0982
 SMITH'S GROCERY
 2030 Industrial WayKE 7-1407
 SUNSET GROCERY
 S 99 HwyKE 7-3172
 SEQUOIA SUPER MARKET
 2000 N Central AvKE 7-2761

VALLEY CASH MARKET
 3009 - 4th StKE 7-1038

Hardware

CERES HARDWARE
 4th & 99 Hwy, 3036 4th KE 7-0360

Hay

CHIPPONERI & ROBINSON
 Rt 2, Box 538...KE 7-2998 - 7-1313

Hay Balers & Tools

CORNFORTH TRACTOR CO
 1302 - 9th St, Modesto...LA 2-5225
 (See Display - Agricultural Page)

Health Foods

TURLOCK HEALTH FOOD & SUPPLY CENTER - 112 S Center Av
 TurlockME 4-7765

Heaters - Orchard

KROELLS PACKING SUPPLY & TOWT WIND MACHINE—N 99 Hwy,
 Box 990, TurlockME 4-5425
 (See Display - Turlock Insert)

Heating

A P FISCHER, INC
 1310 - 9th St, Modesto...LA 4-6274
 (See Display - Double Truck)
 I G REFRIGERATION, INC
 741 S 99 Hwy, Mod...LA 2-1065
 (See Display - Inside Back Cover)

Heating Contractors

TRIPLE 'A' SHEET METAL
 5th & 99 HwyKE 7-2727

High Fidelity Systems

RADIO ELECTRONICS
 1226 H St, Modesto....LA 2-7678

Hospital Equipment

COMMUNITY AMBULANCE SERVICE
 1614 H St, ModestoLA 3-9191
 (See Display - Professional Page)

Household Supplies

L B PRICE-MERCANTILE CO
 2302 - 5th StKE 7-1715

House Movers

AMERICAN HOUSE MOVERS
 2112 Blue Gum Av, Mod...LA 2-1288
 C & L HOUSE MOVERS
 Roeding RoadKE 7-0365

Ice Cream

POP'S SNACK SHACK
 2254 Whitmore RdKE 7-1790

Ignitions

HANCOCK GARAGE
 3025 - 5th StKE 7-0342

Incinerators

CURRIERS OF MODESTO
 1912 Sunrise Av, Mod...LA 4-0738

Industrial Equipment

CORNFORTH TRACTOR CO
 1309 - 9th St, Mod...LA 2-5225
 (See Display - Agricultural Page)

Insulation

VALLEY ASBESTOS COMPANY
 1601 McHenry Av, Mod...LA 4-5188

Insurance

CAL-FARM INSURANCE CO
 1405 - 8th St, Modesto...LA 2-7278

Cont.

Insurance

CERES INSURANCE AGENCY
3026 - 4th St KE 7-3212
HARRY CIRAULO
514 McHenry Av, Mod. LA 2-4045
HARRIS-UTTER INSURANCE AGENCY
2309 Lawrence Av KE 7-0764
L C LITCHFIELD AGENCY
3034 - 4th St KE 7-2271
SIDNEY LONG
2936 - 4th St KE 7-0282

Irrigation Pipe

BUTCHER TRENCHING
Rt 7, Box 1760 KE 7-1752

Janitorial Service

MODESTO JANITORIAL SERVICE
Keyes Road KE 7-2167

Jewelry

FRICKE'S JEWELRY
2934 - 4th St KE 7-1042

Lingerie

FLORENCE'S DRESS SHOP
2959 - 4th St KE 7-0811

Livestock

W C BRUMLEY - Rancher & Dairyman
6 miles out Tuolumne Rd
East of Ceres KE 7-0685

Magazines

SEQUOIA SUPER MARKET
2000 N Central Av KE 7-2761

Markets

SEQUOIA SUPER MARKET
2000 N Central Av KE 7-2761

**BUY
WITH
CONFIDENCE**

*from the firms
displayed*

in the

CLASSIFIED SECTION

*They represent
the*

progressive

business men

of your

community

**LOCAL NEWS
SOCIETY
WOMEN'S FEATURES**

are carried each week

in the

MODESTO TRIBUNE

**Call LAMBERT
3 - 8 3 7 8**

*and order your
subscription today*

SEQUOIA SUPER MARKET

"THE LOWEST SHELF-PRICE IN THIS AREA!"

SATISFACTION GUARANTEED

Completely Air-Conditioned For Your Comfort



★ AMPLE FREE PARKING ★

200 N. Central Ave.

KE 7-2761

Meats

JOE'S LOCKER PLANT
Rt 2, Box 1078.....KE 7-3536
SEQUOIA SUPER MARKET
2000 N Central AvKE 7-2761

Mirrors

ACME GLASS COMPANY
710 G St, ModestoLA 3-5674
(See Display - Reverse Side Inserts)

Modeling

PARK VIEW Beauty & Reducing Salon
2928 - 3rd StKE 7-2143

Motels

JOAQUIN MOTEL
One-half mile S of Ceres,
left sideKE 7-9953
LOS ALAMOS MOTEL
S 99 HwyKE 7-1297

Motor Rebuilding

TOW SERVICE GARAGE
531 Crows Landing, Mod, LA 2-1865
(See Display - Inside Front Cover)

Motor Tuneup

HANCOCK GARAGE
3052 - 4th StKE 7-0342
TOW SERVICE GARAGE
531 Crows Landing, Mod, LA 2-1865
(See Display - Inside Front Cover)

Moving & Storage

MODESTO TRANSFER COMPANY
1403 - 9th St, Modesto..LA 2-4146
(See Display - Back Cover)

Nursing Homes

WILLOWS NURSING HOME
Rt 2, Box 192KE 7-3451

Oils - Lubricating

LANE'S FLYING A SERVICE
Lawrence St & 99 Hwy..KE 7-0123
NIBLER'S SHELL SERVICE STATION
S 99 Hwy & Hatchett ..KE 7-0121

Outboard Motor

Rentals

BERRY & LEWIS
1116 McHenry Av, Mod..LA 3-8038
(See Display - Reverse Double Truck)

Oxygen - Equipped

COMMUNITY AMBULANCE SERVICE
1614 H St, ModestoLA 3-9191
(See Display - Professional Page)

Oxygen - Medical & Industrial

BENSON & ZIMMERMAN
11th & H Sts, Modesto..LA 4-3131
(See Display - Page Facing Inside
Back Cover)

Packaging & Packing

MODESTO TRANSFER COMPANY
1403 - 9th St, Modesto..LA 2-4146
(See Display - Back Cover)

Paints

ACME GLASS COMPANY
710 G St, ModestoLA 3-5674
(See Display - Reverse of Inserts)
CERES PAINT STORE
3020 - 4th StKE 7-1749
VALLEY PAINT COMPANY
1020 - 11th St, Mod..LA 3-1809
(See Display - Modesto Insert)

Paint Contractors

MURL MAXWELL
1662 Margaret WayKE 7-1146
SAM W PERA, Painting & Decorating
Keyes Rd & EsmarKE 7-1742

Paint Equipment

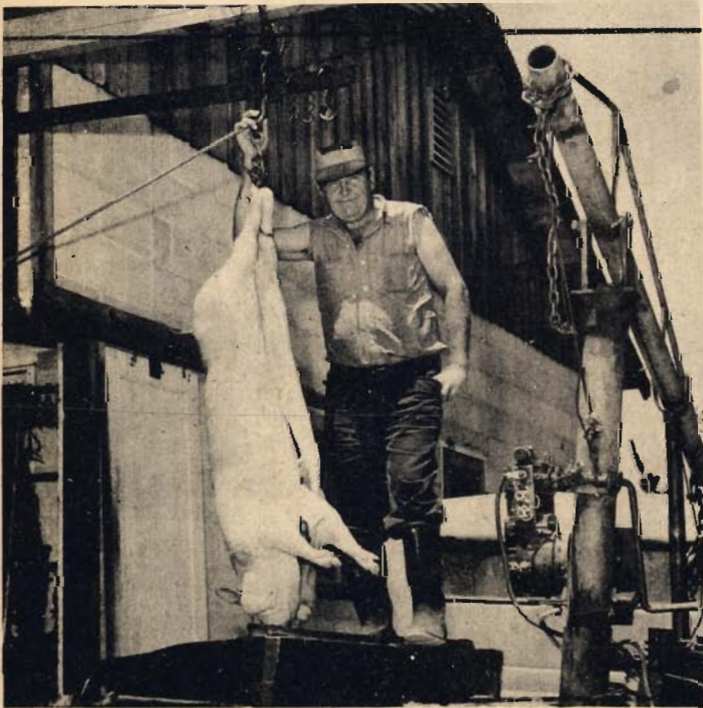
TRIMBLE EQPT SALES & RENTALS
Evans RdKE 7-0415
VALLEY PAINT CO
1020 - 11th St, Mod ..LA 3-1809
(See Display - Modesto Insert)

Plate Glass

ACME GLASS COMPANY
710 G St, ModestoLA 3-5674
(See Display - Reverse of Inserts)

JOE'S LOCKER PLANT

Over 32 Years' Experience In Pleasing The Public With Fine Meats



We're In Business To Please YOU!!

★ **CHOICE QUALITY MEATS AT ALL TIMES**

LOCKERS FOR RENT AT REASONABLE PRICES

We Specialize In Custom Butchering & Cutting

Come Out To Joe's . . .

Tell Us How You Like Your Meat Cut . . .

And Watch Us Do It!



Joe & Margaret Holcher

Owners & Operators

**MORGAN ROAD OFF
SERVICE ROAD-CERES**

KE 7-3536

Phonographs

RADIO ELECTRONICS
1226 H St, Modesto ... LA 2-7678

Pipe Laying

BUTCHER TRENCHING
Rt 7, Box 1760 KE7-1752

Plumbing Equipment

TRIMBLE EQPT SALES & RENTALS
Evans Rd KE7-0415

Plumbing & Heating

ACME PLUMBING & HEATING
2048 Poplar Av No Telephone

Post Hole Diggers

TRIMBLE EQPT SALES & RENTALS
Evans Rd KE7-0415

Proctologists

W FRANCIS HALL, DC
119 McHenry Av, Mod. . LA 2-2980

Power Tools Rental

BERRY & LEWIS RENTALS
1116 McHenry Av, Mod. . LA 3-8038
(See Display - Reverse Double Truck)
TRIMBLE EQPT SALES & RENTALS
Evans Rd KE7-0415

Poultry

EARNEST'S POULTRY RANCH
Rt 7, Box 1619, Gilbert . KE7-1163

Pumps - Water

TRIMBLE EQPT SALES & RENTALS
Evans Rd KE7-0415

Radios

JACK'S RADIO & TELEVISION
3037 - 5th St KE7-3931
RADIO ELECTRONICS
1226 H St, Modesto LA 2-7678

Railroad Tickets

WALSER TRAVEL SERVICE
Hotel Covell, Modesto . LA 3-0731

Radio Service

JACK'S RADIO & TELEVISION
3037 - 5th St KE7-3931

Real Estate

CERES REALTY
1706 N Central Av KE7-1191
HARRY CIRAULO
514 McHenry Av, Mod. . LA 2-4045

J P PETERSEN

Moffett Rd, Rt 1, Bx 195 KE7-1441

Reboring

HANCOCK GARAGE
3052 - 5th St KE7-0342

Reducing Equipment & Systems

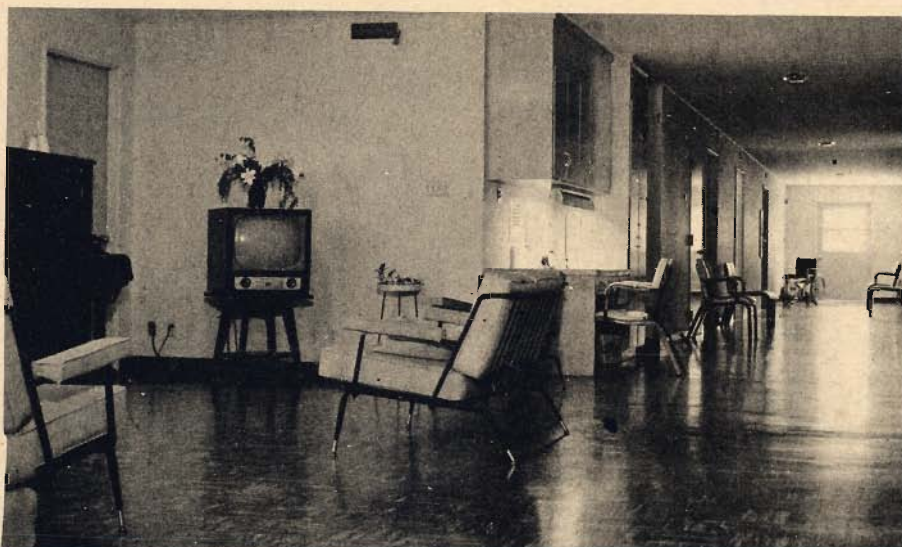
PARK VIEW Beauty & Reducing Salon
2928 - 3rd St KE7-2143
STAUFFER HOME PLAN
1505 K St, Modesto LA 2-9025

Reducing Salons

PARK VIEW Beauty & Reducing Salon
2928 - 3rd St KE7-2143
STAUFFER HOME PLAN
1505 K St, Modesto LA 2-9025

WILLOWS NURSING HOME

STATE LICENSED AND APPROVED



*Specializing
In The Care Of
Bed Patients*

CONVALESCENTS . . .

. . . CHRONIC ILLS . . .

. . . AGED PEOPLE

REGISTERED NURSES ON DUTY

Or On Call

&

24-HOUR DUTY AT ALL TIMES



WELL-BALANCED & PLANNED

MEALS FOR ALL OUR PATIENTS



Richland Ave.
CERES



Ben J. & Mahala Parker, Owners

KE 7-3451

Restaurants

CERES DRIVE-IN CAFE
Parks St & 99 Hwy KE 7-4818
MAYE'S RESTAURANT
3014 - 4th St KE 7-0176
POP'S SNACK SHACK
2254 Whitmore Rd KE 7-1790

Restaurant Equipment

A P FISCHER, INC
1310 - 9th St, Modesto. . LA 4-6274
(See Display - Double Truck)

Rest Homes

CARRELL BOARDING HOME for AGED
3013 - 8th St KE 7-2223

Reweaving

WARD'S REWEAVING COMPANY
612 - 14th St, Modesto. . LA 3-2500

Refrigerators

I C REFRIGERATION SERVICE, INC.
741 S 99 Hwy, Mod . . LA 2-1065
(See Display - Inside Back Cover)

Refrigeration Service

I C REFRIGERATION SERVICE, INC.
741 S 99 Hwy, Mod . . LA 2-1065
(See Display - Inside Back Cover)

Rugs & Carpets

TROY BUNCH, The Seat Cover King
13th & H Sts, Modesto. . LA 4-2604
(See Display - Backstrip)
HOUSE OF CARPETS
920 McHenry Av, Mod. . LA 3-5664

Sand Blasting Eqpt

TRIMBLE EQPT SALES & RENTALS
Evans Rd KE 7-0415

**Sashes - Alum, Steel,
Louvers & Casement**

ACME GLASS CO
710 G St, Modesto . . . LA 3-5674
(See Display - Reverse of Inserts)

Sanitariums

WILLOW NURSING HOME
Rt 2, Box 192 KE 7-3451

Savings & Loan Assns

MODESTO BLDG & LOAN ASSN
221 - 10th St, Modesto. . LA 3-2648

**Seat Covers - Auto,
Airplane, Boats, Trucks**

TROY BUNCH, The Seat Cover King
13th & H Sts, Modesto. . LA 4-2604
(See Display - Backstrip)

Septic Tanks

DRY CHEMICAL PACIFIC
105 G St, Modesto . . . LA 3-8389

Service Stations

LANE'S FLYING A SERVICE
Lawrence St & 99 Hwy . . KE 7-0123
MURRAY'S TEXACO SERVICE
S 99 Hwy KE 7-1139
NIBLER'S SHELL SERVICE STATION
S 99 Hwy & Hackett . . KE 7-0121

Sheet Metal

Contractors

A P FISCHER, INC
1310 - 9th St, Modesto. . LA 4-6274
(See Display - Double Truck)
I C REFRIGERATION SERVICE, INC
741 S 99 Hwy, Modesto. LA 2-1065
(See Display - Inside Back Cover)
TRIPLE 'R' SHEET METAL
5th & 99 Hwy KE 7-2727

LANE'S FLYING A SERVICE



LUBRICATIONS - OIL CHANGES

BATTERIES

☆ **FEDERAL AIR WING TIRES**

We're In Business To Serve YOU!

**Lawrence St.
& 99 Highway, Ceres**

KE 7-0123

POP'S SNACK SHACK
"YOUR MEETING PLACE"



*For A Host of Delicious Short Orders . . Sandwiches & Fountain Drinks
It's POP'S SNACK SHACK . . . Where You'll Meet All Your Friends!*

★ OPEN 6:30 A.M. TO 11:30 P.M. ★

★ SUMMER HOURS 5:30 TO MIDNIGHT ★

**WHITMORE ROAD
ACROSS FROM HIGH SCHOOL**

CHARLES NAPIER BOW, Owner

KE 71790

Triple R
SALES

SHEET METAL CO. & SERVICE



SHEET METAL WORK

Industrial . . . Commercial . . . & Residential
 ● AIR CONDITIONING & HEATING CONTRACTORS ●
Fabrications & Installation

5th & 99 Highway, Ceres

Tel: KE 7-2727
 or LA 3-7885

NIBLER'S SHELL SERVICE

KELLY TIRES

PREMIUM GRADE RUBBER IN RECAPS . . . WITH A NEW-TIRE
 GUARANTEE! ALSO ROAD HAZARDS GUARANTEE



TRUCK & AUTO LUBRICATION

• Farm Tire Repair Service & Tractor Tires

★ PICK-UP & DELIVERY SERVICE ★

SERVICE PERFORMED AT YOUR RANCH OR ON THE ROAD

24-HOUR SERVICE

S 99 Highway & Hackett

KE 7-0121

Showcase Glass

ACME GLASS CO
 710 G St, Modesto . . . LA 3-5674
 (See Display - Reverse of Inserts)

Sickroom Supplies

COMMUNITY AMBULANCE SERVICE
 1614 H St, Modesto . . . LA 3-9191
 (See Display - Professional Page)

Skirts

FLORENCE'S DRESS SHOP
 2959 - 4th St KE 7-0811

Slip Covers

TROY BUNCH, The Seat Cover King
 13th & H Sts, Modesto . . . LA 4-2604
 (See Display - Backstrip)

Soda Fountains

POP'S SNACK SHACK
 2254 Whitmore Rd KE 7-1790

Sporting Goods

BILSON'S SPORT SHOP
 2377 Lawrence Av KE 7-3932

Sportswear

FLORENCE'S DRESS SHOP
 2959 - 4th St KE 7-0811

Steamship Tickets

WALSER TRAVEL SERVICE
 Hotel Covell, Modesto . . . LA 3-0731

Steel Fabrication

A P FISCHER, INC
 - 1310 - 9th St, Modesto . . . LA 4-6274
 (See Display - Double Truck)
 KROELLS PACKING SUPPLY
 TOWT WIND MACHINE, N 99 Hwy
 Box 990, Turlock ME 4-5425
 (See Display - Turlock Insert)

WHIPS MANUFACTURING CO
 2404 Park Av KE 7-1112

Store Fixtures

I C REFRIGERATION SERVICE, INC
 741 S 99 Hwy LA 2-1065
 (See Display - Inside Back Cover)

Store Fronts

ACME GLASS CO
 710 G St, Modesto LA 3-5674
 (See Display - Reverse of Inserts)
 A P FISCHER, INC
 1310 - 9th St, Modesto . . . LA 4-6274

Store Planning

I C REFRIGERATION SERVICE, INC
 741 S 99 Hwy LA 2-1065
 (See Display - Inside Back Cover)

Tape Recorders

RADIO ELECTRONICS
 1226 H St, Modesto LA 2-7678

Taverns

BOB'S PLACE
 2227 Hackett KE 7-0452
 PEANUT ISLAND TAVERN
 3612 S 99 Hwy KE 7-9996

Taxi-Cabs

CERES CAB COMPANY
 3012 - 4th St KE 7-3949

Television

JACK'S RADIO & TELEVISION
 3037 - 5th St KE 7-3931
 RADIO ELECTRONICS
 1226 H St, Modesto LA 2-7678

Television Antennas

RADIO ELECTRONICS
 1226 H St, Modesto . . . LA 2-7678

JACK'S RADIO & TV

Franchised Dealer for DUMONT TV



ALL OUR WORK GUARANTEED 100%
 IN YOUR HOME OR OUR SHOP

☆ AUTO RADIOS EXPERTLY REPAIRED ☆

FREE Estimates on Antennae Installation

3037 5th St.

CERES

KE 7-3931

Television Service

JACK'S RADIO & TELEVISION
3037 - 5th StKE 7-3931

Theatres

CERES DRIVE IN THEATRE
Whitmore AvKE 7-0832

Thermostats

TRIPLE 'R' SHEET METAL
5th & 99 HwyKE 7-2727

Tiles - Accoustical

VALLEY ASBESTOS CO
1601 McHenry Av, Mod. .LA 4-5188

Tilers

TRIMBLE EQPT SALES & RENTALS
Evans RdKE 7-0415

Tires

LANES FLYING A SERVICE
Lawrence St & 99 Hwy .KE 7-0123
NIBLER'S SHELL SERVICE STATION
S 99 Hwy & Hackett ..KE 7-0121

TOW SERVICE GARAGE
531 Crows Landing, Mod. LA 2-1865
(See Display - Inside Front Cover)

Tires - Recapping

NIBLER'S SHELL SERVICE STATION
S 99 Hwy & Hackett ..KE 7-0121

Towing

TOW SERVICE GARAGE
531 Crows Landing, Mod. LA 3-1865
(See Display - Inside Front Cover)

Toys

SEQUOIA SUPER MARKET
2000 N Central AvKE 7-2761

Tractors

CORNFORTH TRACTOR CO
1302 - 9th St, Modesto. LA 2-5225
(See Display - Agricultural Page)
TRIMBLE EQPT SALES & RENTALS
Evans RdKE 7-0415

Tractor Rentals

BERRY & LEWIS RENTALS
1116 McHenry Av, Mod. .LA 3-8038
(See Display - Reverse Double Truck)

Trailer Courts

ANTONIANO TRAILER PARK
S 99 Hwy, Bx 230, Ceres. KE 7-9961

Trailer Dealers

TRIMBLE EQPT SALES & RENTALS
Evans RdKE 7-0415

Trailer Rentals

BERRY & LEWIS RENTALS
1116 McHenry Av, Mod. LA 3-8038
(See Display - Reverse Double Truck)

Transportation

MODESTO TRANSFER CO.
1403 - 9th St, Modesto. LA 2-4146
(See Display - Backcover)

Trash Burners

CURRIERS OF MODESTO
1912 Sunrise Av, Mod. .LA 4-0738

Travel Bureaus

WALSER TRAVEL SERVICE
Hotel Covell, Modesto ...LA 3-0731

Trenching

BUTCHER TRENCHING
Rt 7, Box 1760KE 7-1752

Trucking

CHIPPONERI & ROBINSON
Rt 2, Box 538 ..KE 7-1313 - 7-2988
HOAGLAND'S TRANSPORT SERV, INC
460 Bystrom RdLA 3-1845
(See Display - Frant Cover Strip)
MANUEL LUKE TRUCKING
922 Watson AvKE 7-3545

Typewriters

McDOWELL'S
1116 G St, ModestoLA 2-3140

Upholstery

TROY BUNCH, The Seat Cover King
13th & H Sts, Modesto. LA 4-2604
(See Display - Backstrip)
HAWLEY'S UPHOL & DRAPERIES
428 S 99 Hwy, Modesto. LA 2-4425

Ventilating Contractors

TRIPLE 'R' SHEET METAL
5th & 99 HwyKE 7-2727

BUTCHER TRENCHING

DITCHING

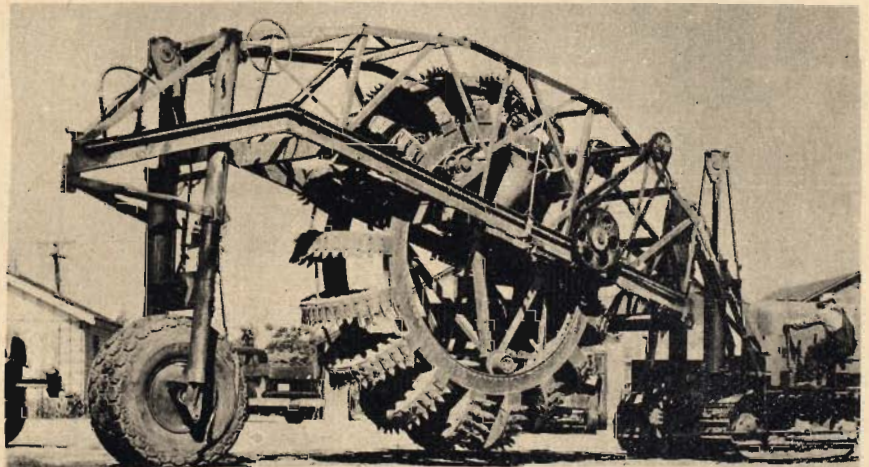
PIPE LAYING

HARD PIPE



Expert Bulldozing

& Trenching



North Central &

Butcher Ave.

Ceres

Phone: **KE 7-1752**

Rt. 7, Box 1760

MODESTO

FLOYD BUTCHER - OWNER



John McCarthy Charles Spenker Kenneth Crook Robert Washburn

It's STANISLAUS COUNTY FARM BUREAU
 FOR YOUR INSURANCE NEEDS — See Reverse Side—
 FOR DETAILS OF HOW YOU CAN LEARN ABOUT THE
 TYPE YOU NEED — DETACH and MAIL THIS CARD—

FROM

PLACE
2c
STAMP
HERE

BUSINESS REPLY CARD

Cal Farm INSURANCE COMPANIES

1405 Eighth Street

Modesto, California



ALL FORMS OF INSURANCE

☆ PUBLIC ACCOUNTANT ☆

● BUSINESS OPPORTUNITIES ● **LA-2-4045**

FROM.....

PLACE
2c
STAMP
HERE

BUSINESS REPLY CARD

HARRY CIRAOLO

514 McHenry,

Modesto, California

Currier's Of Modesto

Manufacturers of Highest Quality
Incinerators & Barbecue Pits

Guaranteed
30 Days
Against Any
Defects In
Workmanship
or Materials

Models to Suit YOUR
Needs . . . & Pocketbook!

521 Santa Rita Ave.



THE
FIESTA
BARBECUE

LA 4-0738

THIS CARD IS WORTH \$2.50 or \$5.00

It's Worth \$2.50 On Any Currier's Incinerator
Or . . . \$5.00 On Any Currier's Barbecue Pit

BUY BOTH (Incinerator & Barbecue Pit) AT SAME TIME &
BOTH SAVINGS Can Be Used!

JUST BRING THIS CARD TO ANY OF OUR CONVENIENT LOCAL DEALERS . .

Sears Roebuck 10th St. Store . . .

Barham's Garden Center 2023 McHenry Ave. . .

Appliance Sales & Service . . . 5th & "H" Sts.

Or To Our Plant . . . 521 Santa Rita Ave. . . . MODESTO

FASHION'S FINEST SALON OF BEAUTY



DISTINCTIVE HAIR STYLING . . . PERMANENT WAV-
ING . . . TINTING . . . SILVER BLONDING . . . ALL
BEAUTY SERVICES!

WANDA HELM, Owner

429 McHENRY

LA 4-1409

\$2.50

THIS CARD WORTH \$2.50

\$2.50

On ANY Permanent Wave from \$15.00 Upwards

at *Fashion's*

Finest Salon of Beauty

☆ THE MOST IMPORTANT ELEMENT TO GLAMOUR ☆

A GOOD PERMANENT

\$2.50

429 McHenry

LA 4-1409

\$2.50

YES . . . I'M INTERESTED!

Please See That I Get all the Details on Your Family Protection and Savings for Retirement Plans, and also Your Special Farm Insurance.

Please Supply Information On:

CHECK

- | | |
|---|---|
| <input type="checkbox"/> Auto Insurance | <input type="checkbox"/> Mortgage Insurance |
| <input type="checkbox"/> Truck Insurance | <input type="checkbox"/> Educational Funds |
| <input type="checkbox"/> Fire Insurance | <input type="checkbox"/> Retirement Income |
| <input type="checkbox"/> Personal Liability Insurance | <input type="checkbox"/> Family Protection |

NAME

ADDRESS CITY.....

RESIDENCE LOCATION

BEST TIME TO CALL..... PHONE.....

Interested in Selling?

Let Our Representative Help You, Simply fill in lines below and at NO Obligation or costs your property will be listed where it will do you the most good!

☆☆ MANY YEARS OF EXPERIENCE IN PROFITABLY ☆☆
DISPOSING OF PROPERTIES

NAME

ADDRESS

Directions To Find Property:.....

..... Phone:

THIS CARD IS WORTH \$2.50 or \$5.00

Get Your Barbecue Pit Or Incinerator NOW!

Save \$2.50 On A Currier's INCINERATOR
Save \$5.00 On a Currier's BARBECUE PIT

Or . . . IF YOU BUY BOTH INCINERATOR & BARBECUE PIT AT THE SAME TIME

This Card Will Save You \$7.50!

☆ Choose a Currier's . . . Leader for over 30 years & SAVE!
Wide Selection to Choose from . . .

This Card Redeemable at:—

Sears-Roebuck 10th St. Store:

Appliance Sales & Service, 5th & "H" . . . Barham's Garden Center
2320 McHenry . . . or Our Plant 521 Santa Rita

\$2.50 THIS CARD WORTH \$2.50

\$2.50

On ANY Permanent Wave from \$15.00 Upwards

INCLUDES SHAMPOO . . . HAIRCUT
AND INDIVIDUAL STYLING . . .

Call LA 4-1409 for an Appointment

at *Fashion's Finest
Salon of Beauty*

429 McHENRY AVE.,

ONLY ONE COUPON PER PERSON

\$2.50

\$2.50

You Have The Need . . .
We Have The Plan!



- LIFE
- AUTO
- TRUCK
- FIRE
- PERSONAL LIABILITY

Cal Farm
Insurance Companies

140 S. 8th STREET
MODESTO, CALIF.

Ph: — LA 2-7278

For Ranch
Orchard Or Vineyard
Properties

TO SELL OR BUY . . .

See:

HARRY CIRAOLLO

514 McHENRY

☆☆☆

USE CONVENIENT ATTACHED CARD

Or Phone

LA 2-4045

At Any Time

Currier's Of Modesto

THE
REGULAR
MICALINED



for
Nationally-Famous
Incinerators &
Barbecue Pits:

Available in a Wide Variety
of Models & Sizes —
from Economy to Luxury

Don't Delay . . . Enjoy the
Convenience of a Currier's
Barbecue Pit or Incinerator NOW!

FASHION'S FINEST SALON OF BEAUTY



Call LA 4-1409 for an Appointment &
bring this attached card to . . .

FASHION'S FINEST SALON OF BEAUTY
429 McHENRY

HOAGLAND'S TRANSPORT SERVICE INC.

STATE WIDE SERVICE



**GENERAL
HAULING**



**Agriculture
Hauling**



Cranes



**Flatbed
Trailers**



**Lo-Bed
Trailers
& Winches**



Lift Trucks



460 Bystrom Road

**MODESTO
P.O. Box 175**

LA 3-1845

*LOCAL NEWS
SOCIETY
WOMEN'S FEATURES*

**
are carried each week*

in the

MODESTO TRIBUNE

Call LAmber
3 - 8 3 7 8

*and order your
subscription today*

34,000

HOMES THROUGHOUT THE
COUNTY RECEIVE IN THE

MAIL THE

MODESTO TRIBUNE

OR THE

MODESTO SHOPPING GUIDE

EACH THURSDAY



**THE
MODESTO TRIBUNE
AND THE
MODESTO SHOPPING GUIDE
PUBLISHERS
OF THE
STANISLAUS COUNTY
BUSINESS DIRECTORY
AS A PUBLIC SERVICE**



**OFFICES AND PRINTING PLANT
AT**

910 12TH ST.

MODESTO

Lambert 3-8378

Chipponeri & Robinson



HAY DEALER &

GENERAL TRUCKING

CENTRAL AVE.
Rt. 2 Box 538, Ceres

DISTRIBUTORS

☆ BEST GYPSUM & MANURE

KE 7-2988

KE 7-1313

JIM CHIPPONERI & ED ROBINSON, OWNERS

For Tops In Smart Fashions

In Junior, Regular and Half Sizes . . .

Next Time Try

Florence's

"Where Style Is Inexpensive"



DRESSES - SPORTSWEAR - COATS - SUITS

☆ LINGERIE - HOSIERY - & ACCESSORIES ☆

PHONE
In Ceres

KE 7-0811

2959 Fourth St.

FLORENCE & RUDY MACEDO
Owners

WE GIVE
S & H
Green Stamps

Wallpaper

ACME GLASS CO
710 G St, ModestoLA 3-5674
(See Display - Reverse of Inserts)
VALLEY PAINT COMPANY
1029 - 11th St, Mod.LA 3-1809
(See Display - Modesto Insert)

Washers

RADIO ELECTRONICS
1226 H St, ModestoLA 2-7678

Water Heaters -

Dealers

S A WARTHAN
2525 - 10th StKE 7-1692

**Water Pumps -
Portable**

TRIMBLE EQPT SALES & RENTALS
Evans RdKE 7-0415

Weather Stripping

VALLEY ASBESTOS CO
. 632 - 11th St, ModLA 4-5188

Welding

C H WILLIAMS & SON
632 - 11th St, ModestoLA 3-8339

Welding Equipment

TRIMBLE EQPT SALES & RENTALS
Evans RdKE 7-0415

Wheel Alignment

HANCOCK GARAGE
3052 - 5th StKE 7-0342
TOW SERVICE GARAGE
531 Crows Landing, Mod. LA 2-1865
(See Inside Front Cover)
C H WILLIAMS & SON
632 - 11th St, Modesto LA 3-8339

Wind Machines

KROELLS PACKING SUPPLY
TOWT WIND MACHINE, N 99 Hwy
Box 990, TurlockME 4-5424
(See Display - Turlock Insert)

Window Glass

ACME GLASS COMPANY
710 G St, ModestoLA 3-5674
(See Display - Reverse of Inserts)

Windshields

ACME GLASS COMPANY
710 G St, ModestoLA 3-5674
(See Display - Reverse of Inserts)

Women's Accessories

FLORENCE'S DRESS SHOP
2959 - 4th StKE 7-0811

Yard Goods - Plastic

TROY BUNCH, The Seat Cover King
13th & H Sts, Modesto. LA 4-2604
(See Display - Backstrip)

**CROWS LANDING CLASSIFIED
D I R E C T O R Y**

PHIL'S FROZEN FOOD MART

West Side's Most Complete Locker Service

MEAT & GAME PROCESSING

- Locker Rentals
- Curing & Smoking
- Wholesale Meats

*We specialize In Curing Old-Fashioned
Hams & Bacon . . . Wild Game . . . Poultry
& Fish*

4th Street TE 7-4368
P.M. Box 278 Crows Landing LA 2-6876

Auto Accessories

C & M GARAGE
Hwy 33TE 7-4656

Auto Repairs

AZEVEDO GARAGE
Hwy 33TE 7-4752
C & M GARAGE
Hwy 33TE 7-4686

**Auto Washing &
Polishing**

C & M GARAGE
Hwy 33TE 7-4686

Banks

FIRST WESTERN BANK & TRUST CO
5th StTE 7-4718

Barbers

FRANK'S BARBER SHOP
Hwy 33TE 7-4226

Batteries - Sales & Serv

C & M GARAGE
Hwy 33TE 7-4686

Farm Supplies

DOMPE WAREHOUSE CO
5th StTE 7-4726

**Frozen Food Lockers &
Rental**

PHIL'S FROZEN FOOD MART
4th StTE 7-4368, LA 2-6876

Gasoline & Oil Distr

SHELL OIL CO—Gilbert Borba, Dist
Hwy 33TE 7-4691

Hardware

WEST SIDE HARDWARE
Hwy 33 betwn 5th & 6th. TE 7-4607

Markets


MINER'S CROWS LANDING MKT
5th & G StsTE 7-4367
SOUZA'S MARKET
F StTE 7-4286

Meats - Wholesale

PHIL'S FROZEN FOOD MART
4th StTE 7-4368

**Meats - Custom Killing
& Processing**


PHIL'S FROZEN FOOD MART
4th StTE 7-4368
LA 2-6876



MEMBER
PRODUCE REPORTER CO
BLUE BOOK
PROTECTED BY
BLUE BOOK SERVICE

PEREZ BROS.

*Growers
Packers Shippers*



GROWERS & SHIPPERS
PEREZ BROS
CROWS LANDING, CALIF.

FRUITS AND VEGETABLES

Crows Landing Hwy.
P.O. BOX 176

TE 7-4701
CROWS LANDING

BEN FISH & SON

**BUY - SELL - PROCESS LIMA BEAN SEED
FOR FRESH PROCESSING
FROZEN OR CANNED**

BEANS SORTED BY ELECTRIC EYE

5-St. Crows Landing, Box 417, Crows Landing, TE 2-4749

Oils - Lubricating

C & M GARAGE
Hwy 33TE 7-4686

**Produce - Growers,
Shippers & Packers**

PEREZ BROS
P O Box 176TE 7-4701

Restaurants

J & E CAFE
F StTE 7-9972

Seeds - Lima Bean

BEN FISH & SON
5th StTE 7-4744

Service Stations

C & M GARAGE
Hwy 33TE 7-4666
LEE COUSER CHEVRON STATION
Hwy 33TE 7-4321

Steam Cleaning

C & M GARAGE
Hwy 33TE 7-4686

Sugar Refiners

SPRECKELS SUGAR CO
Hwy 33TE 7-4786

Taverns

BANK CLUB
Hwy 33TE 7-4796

Tires

C & M GARAGE
Hwy 33TE 7-4686

Warehouses

DOMPE WAREHOUSE COMPANY
5th StTE 7-4726
JOHN F GRISEZ CO
Hwy 33 & F StTE 7-4776

Welding

TYLER'S WELDING SHOP
Hwy 33TE 7-4236

Well Drilling

HAWK WELL & EQUIPMENT CO
5th StTE 7-4696

C. & M. GARAGE

SHELL SERVICE STATION

General Automotive Repair

Goodyear Tires - Delco & Goodyear Batteries

LUBRICATION

WASHING - POLISHING & STEAM CLEANING

HWY 33, CROWS LANDING Phone 7-4686

DOMPE WAREHOUSE COMPANY

**STORAGE OF BEANS - GRAIN - SEED
SEED AND BEAN CLEANING AND DRYING**

DOMPE SUPPLY COMPANY

ORTHO FERTILIZERS • ORTHO INSECTICIDES
Agricultural Chemicals

OUR AIM → SERVICE - QUALITY - SATISFACTION

5th St. Crows Landing Phone 7-4726

TOWT WIND MACHINE



There is No Compromise for
QUALITY



TOWT WIND MACHINES COME EQUIPPED WITH PROPELLORS, MOTORS AND STARTING EQUIPMENT ENGINEERED FOR THE EXACTING REQUIREMENTS FOR MAXIMUM FROST PROTECTION WITH MINIMUM HORSEPOWER.

You cannot afford to experiment with equipment NOT manufactured by specialists in the propellor or motor industry. You buy the latest and most modern equipment supplied by manufacturers who are tops in their field when you install a Towt Wind Machine.

KROELLS PACKING SUPPLY

N.99 Hwy, P.O.Box 990 ME 4-5424 Turlock

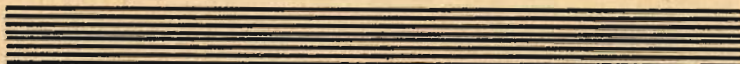


ADVERTISEMENTS —

make this Directory possible.



**THE
MODESTO
TRIBUNE**



*"Stanislaus County's
Fastest Growing
Weekly Newspaper"*

DENAIR GENERAL INFORMATION

CHURCHES

DENAIR CHURCHES AND THEIR SERVICES

BAPTIST

SOUTHERN BAPTIST CHURCH

Myrtle St

Rev M L Burchinall
SUNDAY SERVICES

9:45 a.m. Sunday School
11:00 a.m. Morning Worship
6:30 p.m. Training Meeting
8:00 p.m. Evening Services
8:00 p.m. Prayer Meeting,
Wednesday

CHURCH OF CHRIST

DENAIR CHURCH OF CHRIST

Gratton and Zeering Rd
Ruben Porter, minister

SUNDAY SERVICES

10:00 a.m. Sunday School
11:00 a.m. Worship
8:00 p.m. Bible Study
8:00 p.m. Evening Services
8:00 p.m. Prayer Meeting,
Wednesday

NAZARENE

3516 Gratton Rd
3516 Gratton Rd . . . ME 4-4106

Virgil M Hutcheson, pastor

SUNDAY SERVICES

9:45 a.m. Bible School
11:00 a.m. Worship
6:30 p.m. Youth Groups
7:30 p.m. Evening Services
7:30 p.m. Midweek Service,
Wednesday

OTHER CHURCHES

FRIENDS CHURCH

Woodrow Young, interim pastor

SUNDAY SERVICES

9:45 a.m. Sunday School
11:00 a.m. Worship Service
7:00 p.m. Adult Bible Study
8:00 p.m. Evening Worship
7:00 p.m. Youth Groups, Wednesday
7:30 p.m. Bible Study and Prayer
Service, Wednesday

MISSIONARY CHURCH

Rev David Young, pastor

SUNDAY SERVICES

9:45 a.m. Bible School
11:00 a.m. Worship
8:00 p.m. Evening Bible Hour

7:00 p.m. Missionary Youth Fel-

lowship

7:00 p.m. Adult Prayer Band

8:00 p.m. Prayer Fellowship and
Bible Study, Wednesday

ORGANIZATIONS AND CLUBS

ORGANIZATIONS DENAIR

CHAMBER OF COMMERCE

Meets 4th Monday 8:00 pm at
Community Club House

DENAIR HOME DEPARTMENT

Meets 3d Tuesday 2:00 p.m. at
Community Club House

GRATTON GRANGE

Meets 1st and 3d Wednesday 8:00
p.m. Gratton Grange Hall

LIONS CLUB

Meets 1st and 3d Monday 7:30
p.m. Community Club House

WOMEN'S SERVICE CLUB

Meets 1st Tuesday 2:00 p.m. at
Larson Hall

BUILD

a better mouse trap

and

the world will beat

a path to your door

if you

advertise the mousetrap

DENAIR CLASSIFIED DIRECTORY

Barber Shops

DENAIR BARBER SHOP

3641 Myrtle Av . . . ME 4-1797

Beauty Shops

CAMILLA BEAUTY SHOP

4637 Myrtle Av . . . ME 4-6895

RAINBOW BEAUTY SALON

4140 E Zeering Rd . . . ME 2-0254

Cabinet Shops

DAVE L. FICKEL

4010 Monte Vista Rd . . ME 4-6193

Cattle Buyer

LEONARD BLOCK

Taylor Rd . . . ME 4-5091

Contractors - General

DAVE L FICKEL

4010 Monte Vista Rd . . ME 4-6193

Farming - Custom

LINCOLN ESAU

Hamlow & Swanson . . . ME 4-3893

Feed Mills

LONE PINE FEED MILL

4532 Myrtle Av . . . ME 2-1174

Frozen Food Lockers -

Rental

DENAIR LOCKER SERVICE

4616 Myrtle Av . . . ME 4-4856

Grocers

DENAIR CASH GROCERY

4600 Myrtle Av . . . ME 4-4866

H E WALTON

4625 Myrtle Av . . . ME 4-3971

Hardware

DENAIR HWDRE & IMPLEMENT CO

4724 Myrtle Av . . . ME 4-4203

Lumber

DENAIR LUMBER CO

4501 Myrtle Av . . . ME 2-2494

Plumbing

O C LUMBER

Downie Rd . . . ME 4-4089

Poultry

LOOMIS POULTRY & EGG CO

4532 Myrtle Av . . . ME 2-0179

Real Estate

HAROLD E WALTON REALTOR

4632 Myrtle Av . . . ME 4-3344

Refrigerator Service

HORSTMAN'S REFRIGERATION SERV

4603 Myrtle . . . ME 4-3398

Restaurants

EDWARDS DRIVE IN

4708 Myrtle Av . . . ME 4-1332

Service Stations

STAN MARTIN UNION SERVICE

4700 Myrtle Av . . . ME 4-1076

MOORE'S SERVICE STATION

4601 Myrtle Av . . . ME 4-1340

Variety Stores

EDITH'S VARIETY STORE

4624 Myrtle Av . . . ME 4-5365

Dave L. Fickel GENERAL BUILDING CONTRACTOR



ALL TYPES OF BUILDING

Also

DENAIR CABINET SHOP — ALL TYPES OF MILLWORK

Homes of Distinction

4010 Monte Vista Road — Denair • ME 4-6193

EMPIRE

CHURCHES

EMPIRE CHURCHES AND THEIR SERVICES
ASSEMBLY OF GOD
 GLAD TIDINGS ASSEMBLY OF GOD
 Yosemite and Eye Sts
 Rev John Jacobs, pastor
SUNDAY SERVICES
 9:45 a.m. Sunday School
 11:00 a.m. Devotional
 7:30 p.m. Evangelistic Service
 7:30 p.m. Weekday Service, Tues.
 7:30 p.m. Young People, Friday

BAPTIST
FIRST BAPTIST CHURCH
 Yosemite and Eye Sts
 Gordon Hatcher, pastor
SUNDAY SERVICES
 9:45 a.m. Sunday School
 11:00 a.m. Worship Service
 6:30 p.m. Training Union
 7:30 p.m. Evening Worship
 7:30 p.m. Prayer Meeting, Wednesday.

CHURCH OF CHRIST
EMPIRE CHURCH OF CHRIST
 Church and McCoy Sts
 Cecil Brotherton, pastor
SUNDAY SERVICES
 10:00 a.m. Bible Class
 11:00 a.m. Worship Service
 7:30 p.m. Worship Service

CHURCH OF THE BRETHREN
CHURCH OF THE BRETHREN
 Lorell Weiss, pastor
SUNDAY SERVICES
 9:45 a.m. Church School
 11:00 a.m. Morning Worship
 7:00 p.m. Group Meetings
 8:00 p.m. Evening Worship

ORGANIZATIONS

CHAMBER OF COMMERCE
 Meets 4th Thursdays at 8:00 p.m.
 Empire Community Hall

FARM BUREAU
 Meets 2d Thursday 8:00 p.m.
 Empire Community Hall

FIRE COMMISSIONERS
 Meets 2d Monday 8:00 p.m.
 Fire Station 131 Phoenix

GRANGE
 Meets 1st and 3d Monday at
 Empire Community Hall

LIONS CLUB
 Meets 2d and 4th Monday Dinner
 Empire Community Hall

PLANNING GROUP
 Meets 2d Tuesday Committee Rm
 at Empire Community Hall

PTA
 Meets 3d Tuesday a.m or p.m. as
 called Empire Elementary School

Painting Contractors

N J FRANTZ
 Yosemite Blvd LA 3-6963

MITCHELL & FRICK
 417 E St LA 2-4157

Paints

EMPIRE HARDWARE
 P O Box 1017 LA 3-4889

Radio & TV Repair

SWANGER'S RADIO & TV SERVICE
 Yosemite Blvd LA 2-3745

Restaurants

COFFEE BREAK
 412 Yosemite Blvd LA 4-6652

Service Stations

EMPIRE RICHFIELD SERV STATION
 221 Yosemite Blvd LA 4-0734

Sporting Goods

EMPIRE HARDWARE
 P O Box 1017 LA 3-4889

Taverns

THE SANDS
 Waterford Rd LA 4-0574

HICKMAN

CHURCHES

CHURCHES AND THEIR SERVICES
ASSEMBLY OF GOD
 E St and Hwy 132
 W E Hubbard, minister
SUNDAY SERVICES
 9:45 a.m. Sunday School
 11:00 a.m. Morning Worship
 7:30 p.m. Evangelistic Service
 7:45 p.m. Prayer Meeting, Tuesday
 7:30 p.m. Young People's Service
 Thursday

BAPTIST
CALVARY BAPTIST CHURCH
 116 E St
 Rev James William pastor
SUNDAY SERVICES
 9:45 a.m. Sunday School
 11:00 a.m. Morning Worship
 7:00 p.m. Training Union
 7:30 p.m. Evening Worship
 8:30 p.m. Prayer Service, Wed.

COMMUNITY BAPTIST CHURCH
 Conner D and Main Sts
 Rev James E Merlin, pastor

SUNDAY SERVICES

9:45 a.m. Sunday School
 11:00 a.m. Morning Worship
 6:00 p.m. Baptist Youth Fellowship
 7:30 p.m. Evening Service
 7:20 p.m. Midweek Service, Wed

ORGANIZATIONS HICKMAN

HICKMAN-WATERFORD FARM CENTER
 Meets 1st Monday 8:00 p.m. at
 Hickman Community Hall

CLASSIFIED

Grocers

HICKMAN GROCERY
 La Grange Rd TR 4-9963

Service Stations

S & M DOUGLAS SERVICE
 La Grange & Montpelier, TR 4-9952

Welding

HICKMAN WELDING SHOP
 Hickman & LaGrange Rd, TR 4-2121

EMPIRE CLASSIFIED

Ammunition

EMPIRE HARDWARE
 P O Box 1017 LA 3-4889

Auto Repair

HENRY BENTON
 Yosemite Blvd LA 2-0777

Barbers

RALPH'S BARBER SHOP
 Yosemite Blvd LA 4-1757

Beauty Shops

ROMA'S BEAUTY SHOP
 Yosemite & Church LA 3-2112

Crop Dusting

PORTER AIR SERVICE, Santa Fe Av
 betw Milnes & Parker .. LA 2-0114

Department Stores

EMPIRE DEPARTMENT STORE
 Waterford Rd LA 2-7977

Drug Stores

EMPIRE SUNDRIES
 Yosemite Blvd LA 2-3962

Electric Appliances

EMPIRE HARDWARE
 P O Box 1017 LA 3-4889

Farm Eqpt & Supplies

EMPIRE FEED & SEED STORE
 Waterford Rd LA 3-4898

EMPIRE HARDWARE
 P O Box 1017 LA 3-4889

Foods - Processed

SOULE GIBBS & BOYER
 Garst Rd LA 4-1876

Frozen Food Lockers - Rental

EMPIRE FROZEN FOOD LOCKERS
 Yosemite Blvd LA 3-9098

Fruit

EMPIRE FRUIT MARKET
 Yosemite Blvd LA 3-6725

LINDLEY FRUIT CO LA 2-5985

Hardware

EMPIRE HARDWARE
 P O Box 1017 LA 3-4889

Housewares

EMPIRE HARDWARE
 P O Box 1017 LA 3-4889

Hunting & Fishing Licenses

EMPIRE HARDWARE
 P O Box 1017 LA 3-4889

Insurance

AETNA LIFE INS CO
 Rt 1, Box 778 LA 2-1347

Labor Camps

EMPIRE FARMERS LABOR CAMPS
 White Av LA 3-4184

Markets

BETTERWAY STORES
 Yosemite Blvd LA 2-4163

MODEL MARKET
 Yosemite Blvd LA 2-8166

Newspapers

EMPIRE NEWS
 219 E Yosemite Blvd .. LA 2-4162

EMPIRE HARDWARE



WESTINGHOUSE — Major & Small Appliances

DUTCH BOY Paints

Hardware . . . Housewares . . . Ammunition

Sporting Goods . . . Hunting & Fishing Licenses

YOSEMITE BLVD., HIGHWAY 132

LA 3-4889