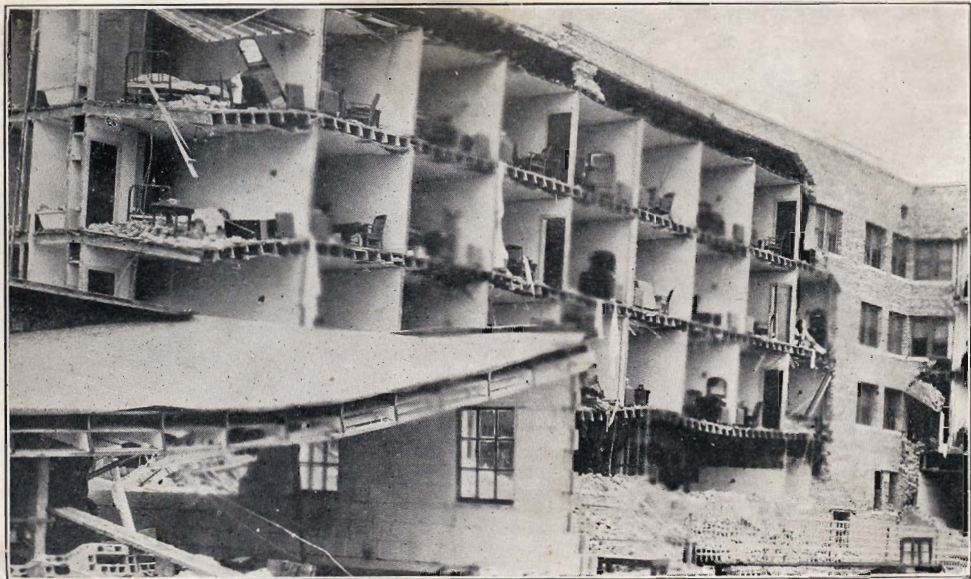
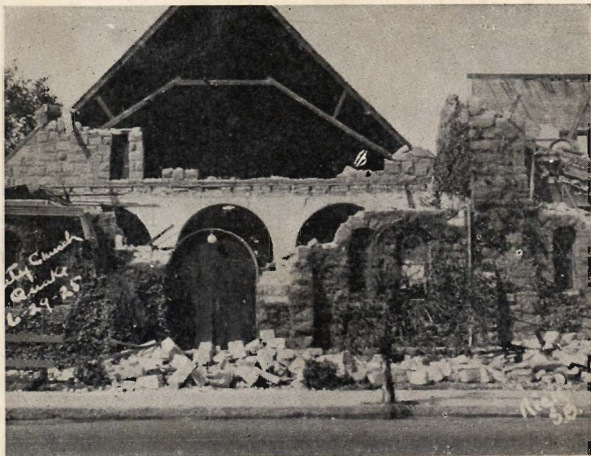




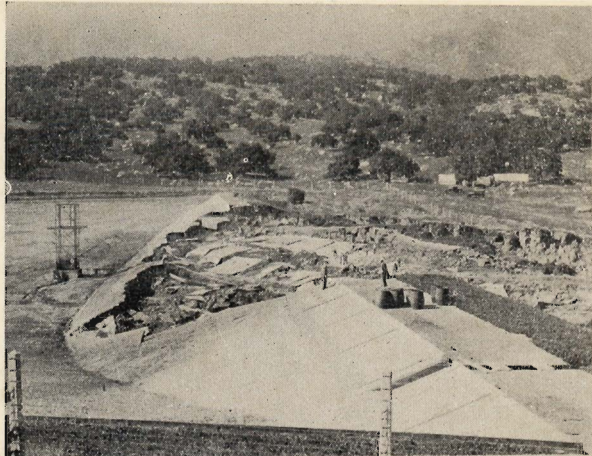
The Famous Santa Barbara Mission Towers, Which Fell in the Earthquake of June 29th, 1925.



Hotel Californian, Wrecked by Santa Barbara. Earthquake The Walls Fell, Exposing Bed Rooms.



Two Views of Unitarian Church, Santa Barbara Quake.



SHEFFIELD DAM RIVEN BY THE QUAKE
THE COAST HIGHWAY JUST EAST OF STATE SHOWING
CREVICES MADE BY QUAKE



Avalon, Catalina Island, California,
Mountains and Sea form a Beautiful Setting
for this Delightful all-year Resort.



"In All The World No Trip Like This"



C.I.7. RESIDENCE OF WM. WRIGLEY, JR., AND AVALON BAY, CATALINA ISLAND, CALIFORNIA.

