



Organizations

Student Council *June*



NELSON
President



BEWLEY
Vice-President



DOW
Secretary



TROUTMAN
Finance



Marshall
Publications

Brandstad
Entertainment

Beckman
Traffic

Thompson
Buildings and Grounds



McLaughlin
Girls' Affairs

Rincret
Boys' Affairs



Briggs
Publicity

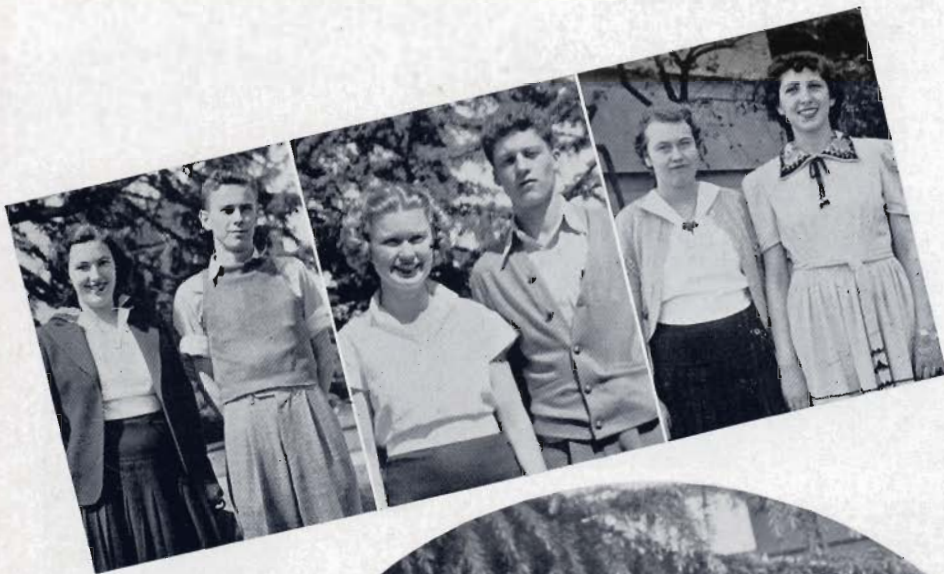


Frey
Girls' Athletics

Clasen
Boys' Athletics

Ritchie
Cultural Activities





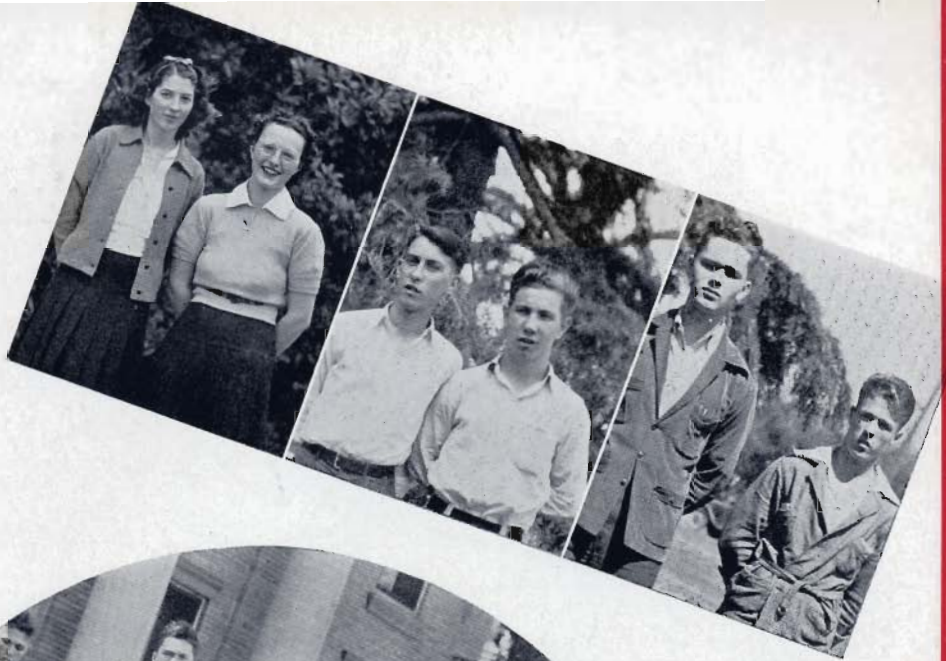
Barron, *Editor*
 Bansmer, *Business Manager*
 McDonald, *Art Editor*
 Klipfel, *Photographer*
 McLean, *Club Editor*
 Guilfoyle, *Senior Editor*
 Miss Elizabeth McDole, *Adviser*

T
O
K
A
Y



Collins, *Boys Editor*
 Collins, *Girls Editor*
 Hepper, *Typist*
 Grigsby, *Freshman Editor*
 Nies, *Typist*
 Klipfel, *Snap Editor*
 Jensen, *Drama Editor*

Winsor, *News Editor*
 Field, *Society Editor*
 Hall, *Associate Editor*
 Mall, *Sports Editor*
 Wollesen, *Editor*
 Jacobsen, *Business Manager*



f
l
a
m
e



S. Handel, *Reporter*
 B. Handel, *Typist*
 Buford, *Feature Editor*
 Michelson, *Exchange Editor*
 Mills, *Collector*
 Ziesel, *Feature Editor*

Girls' Association



Guilfoyle, McLaughlin, Grigsby, Preszler;
Collins, Briggs, Thompson, Frey, Beekman.

MISS SIGNA MARIE HOLM
Dean of Girls





GINKGO CLUB

Beckman, Hoffman, Schneider, Tinkle, Todd, Lieb, Keir, Tsutsumi, Netz, Wallace Chandler, Carlson, Wagers, Handel, Eprosen; Sobkowsky, Darden, Behlm, R. Kuramoto, Masui, F. Kuramoto; Wiley, Scheidenman, VanSteenberg, Gray.

EXPERT TYPISTS' CLUB

Schroeder, Frey, Biscoe, Thompson, Mrs. Buelah Burrell, Kammerer, Inagaki, Scibold; Bressani; Belluomini, Oga, Kagawa, Walderslov, Kuwahara; Northrup, Miss Donna Bridges (adviser), Dodds, Burney, Neuharth, Zeissler.

Bird Caneps

Buck



CHEMISTRY CLUB

Bredy, Nelson, Hoffman, Shank, Schunke, Pyle; Cheatham, Gundert, Corell,
 Buckmiller, Shimada, Dow, Sparlin; Nelson, Canepa, Focacci, Herrick, Buck,
 Kimura, Wakai, Kutlik; Rice, Shoemaker, Rothenberger, Granlees, Watson,
 Genochio, Jungeblut, Whipple; Utterback, Hittle, Gross, Ayres,
 Hepper, Franklin, McWade.

Hargis, Leary, Brown, Irely, Beckman, Fink, Fujitani, Folendorf; Dobrasin, Corell,
 Villaneuva, Schwartz, Carpenter, Hiramoto, Votaw, Smith; Burlington, Beckman,
 Rinfret, Bewley, Mills, Marshall; Pearson, Horstkorta, Martin, Thomas, Smith,
 Rinn, Wakai; Barron, Field, McLean, Bolinger, Ritchie, McLaughlin, Perrin,
 Green, Guilfoyle, Pair; Grigsby, Green, Ruhl, McDonald,
 Brandstad, Briggs, Gibbons.



DX'ERS

Thielman, Burlington, Canea, Niessner, C. Smith; Wakai, Tonini, Matteoni,
 Dettmer, Kutlick, Marshall; Garfalo, Carroll, M. Smith, Schwartz,
 Beckman, Tamura.

INTERNATIONAL CLUB

Schunke, Cooper, Langlois, D. Brown, Michelsen, L. Brown; Borst, Gundert, Pat-
 terson, Ritchie, Guilfoyle, Genochio; Eprosen, Werner, Briggs, McLaughlin,
 McLean, Sanguinetti; Mills, Fachner, Grigsby, Brandstad, Gibbons, Hunter.



DEBATE CLUB
Schwarze, Miss Miriam Gealey, Briggs, Neuharth, Rice; Marshall, Bewley,
Grigsby, Niles, Stuck.

AERO CLUB
Bansmer, Fink, Gurney; Schwarze, Marshall, Rinfret, Irey, Mintun.



John

C. S. F. SECOND SEMESTER
 Todd, Flockhart, Beckman, Chaney, Georgie, Wiederrich, Rice, Werner, Inagaka,
 Kimura, Wakai; Meeske, Perrin, MacDonald, Sweeney, Jensen, Kolb, Dow, H.
 Murosaki, Kobara, Ouye, Cook, Hepper, McLean, Barron, Ruhl,
 Northrup, Menzel, Hiromoto.

C. S. F. FIRST SEMESTER
 Barron, A. McDonald, Fairchilds, Imada, Chaney; McLean, Georgie, Kolb, Oga,
 Rice, Ruhl, Jensen, Azevedo, Ritchie; Northrup, Kimura, Perrin, Melcher,
 Sweeney, Watson, Stuck; Kurata, Hiramoto, C. Wakai, Nelson, M. Wakai.



Servant



CAFETERIA CLUB

Bender, Schaffer, Cheatham, Mills, Schwemmer, Reising, Weber; Mintun, Geringer, Delzer, Pope, Callis, Ruff, Hughes, Kludt, Winter; Schmidt, Tinkle, Wauchope, Sherrow, Schill, Wilburn, Hall, Reiman, Mayer, Seibel; Strohmeier, Miller, Radtke, Seibel, Delzer, Pahl, Little, McQueen, Ruff, Hyske.



JAPANESE CLUB

Ito, R. Kimura, M. Wakai, Shiota, G. Nakamura, Hayashi; W. Ouye, Kaba, H. Nakamura, Shigehara, C. Wakai, H. Mikawa, Furuoka; Fujinaka, M. Wakai, E. Ouye, Iwamiya, Ishida, Y. Ouye, F. Mikawa; Murosaki, K. Murosaki, Hanaki, Nishimoto, Inoshita, F. Kuramoto, Matsuura, Y. Oga, H. Masui, Inagaki, Oshima, W. Kagawa, H. Wakai; R. Kuramoto, Tanaka, Fujioka, Okura, Kuwabara, Otani, D. Masui, T. Oga, Tsutumi, G. Kagawa, G. Sasaki; L. Kuramoto, Y. Hiramoto, T. Sugimoto, K. Matsumoto, L. Sugimoto, J. Matsumoto, M. Matsubiro, Nishima, R. Masui, Kambara, M. Ouye, Imada, S. Hiramoto, J. Matsubiro.

A CAPELLA CHOIR

Cooper, Devine, Hawkins, Schmierer, Weller, Tonini, Patterson, Locke, Shank, Retzer; Pierce, Baumbach, Wiley, Mettler, Board, Winn, Miller, Granlees, Horstkorta, Hibbard, Gnirk, Gross, Werner, Flaig, Frey; Vargas, Limbaugh, Todd, McMahon, Stark, Fachner, Ehrhardt, Delzer, Jensen, Archer, Briggs, Hickok, Schmidt, Marrs.





B. N. O. CLUB

Howen, Wagers, Tubbs, Martin, Woods, R. Loveless, Lauchland, Koeneke, Corell, Messing, L. Goehring, Gundert; Briggs, Gerard, Ritchie, Holloway, Tonini, Rode, Beckman, Mehlhoff, Green, Votaw, Wiley; Neuhardt, Thompson, Story, Frey, Gibbons, Cormack, V. Loveless, R. Goehring, Brown, Farnell, Schwarze; Stuck, Sweeney, Haabesland, Whitley, Watson, Daniels, Franklin, Wittmeier, Cross, Baum; Macdonald, Perrin, Moore, Mason, Northrup, Schmidt, Hoegerman, Halsey.

BETA LAMBDA

Utterback, Cooper, Porter, Bunds, Wallace, Miller, Siegalkoff, Peirano, Schiedeman, Turnage, Freeman, Odor, Valenti, Thisby; Gnirk, Samuelson, Pope, Rice, Nichols, Jacobsen, Schill, Riley, Haymond, Gnirk, Declusin, Bischel, Van Steenburg, Woods, Kutlik, Wittmayer, Veit, Seibel, Ruhl, Kolb, Declusin, Archer; Ehrhardt, Shank, Nies, MacAuley, Todd, Yankee.



Gnirk, Haymond, Neuharth, Culbertson, Reiger, Rothenberger, Erich, Hatch, Ferrari, Buchmiller, Beckman, Mettler, Street, Wagers, Preszler, Seibel; Cayton, Meier, Netz, Fowler, Macri, Bender, Garner, Wetmore, Scott, Wright, Handel, Wilson, Siegalkoff, Buell, Lee; Blanke, Seeley, Meeske, Bansmer, McKee, Howry, Taylor, Baker, Young, Fowler, Siegalkoff; McQueen, Steinwand, Ruff, Hyske, Keeley, Benedict.





Ninth Handel

Band

Briggs

Burlington

Ritchie



First clarinets: C. Beckman, Gibbons, Franklin, Martin, Macdonald, Hunter, Miller, Green, Sanguinetti, Handel, Smith, Moore; alto clarinets: Pearson, McDonald; saxophones: Cormack, Langlois, Sweeny, Hepper, Magellan; horns: Wittmeier, Schwarze, Votaw, Messing, Hosmer, Mason, Schmeidt; bassoon and flutes: Daniels, Schwarze, Zeissler, Mehlhaff; baritones: Howen, V. Loveless, Spurgin, Mettler; basses: C. Miller, Klipfel, Lauchland, Ehrhardt, Stark, R. Beckman; second clarinets: R. Loveless, Wagers, Northrup, L. Goehring, Cooper, H. Mason, Neuharth; cornets: Tubbs, Wiley, Holloway, Siegfried, Kundert, Story, Frey, Tonini, Koenke, Hoegerman, Farnell, R. Goehring; trombones: Helmle, Rode, Siegalkoff, Earley, Pair, Roach, Baum, Hust; drums: Maris, Calvert, Cross, Schmidt, Tonn.

Orchestra

First violins: Stuck, Meeske, Maris, Gundert, Perrin, Daniels, Whitley, Thompson, Anderson, M. Matsuhiro, Haabesland; piano: Watson, Handel; basses: Purviance, Hoffman, Schnell; cellos: Buchmiller, DeWeber, Schmidt, Tonn; flutes and clarinets: Mehlhaff, Ziessler, Gibbons; horns: Schwarze, Wittmeier; second violins: Eskildsen, Grieser, Muller, Mitchell, G. Matsuhiro, Baum, Nies, Gemello, Melcher, Stirm; cornets: Kundert, Lagomarsino; trombones: Rode, Brown, Young; drums: McLachlan.

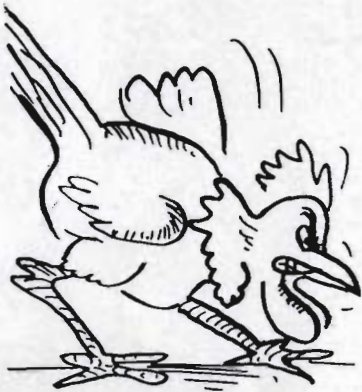
SIDNEY HALSEY
Director





F. F. A.

Swett, Hoffman, Heustis, Weatherington, Furuoka, Nakagawa, Irely, Bechthold, Purviance, Smith, Baker, Utterback, Pearson, Russell, Beisel, Schmidt, Lange, Keszler, Callis, Mock, Montgomery, Blohm, Diekman, Evans; Elithorp, Mason, Noma, Towle, Frey, Johnson, N. Preszler, R. Preszler, Miller, Mikawa, Shigehira, Hoffman, Mason, Delzer, Pope, Valesquez, Ferrero, Gribaudo, Rinaudo; Schaffer, Elithorp, Pope, Nevins, Bender, Scott, J. Costamagna, P. Costamagna, Martell, Ayers, French, Pahl, Kiriu, Ramer, Mayer, Declusin, Guthmiller; Brown, Taddei, Stark, Woods, Beckman, Shelton, Odor, M. Rozzoni, Fanos, Lange, V. Mettler, Jacinto, R. Mettler, L. Beckman, Bischel, Valenti, Eichman, H. Rozzoni, Brandt, Cavanaugh, Perrin, Nies, Lemon, G. Nakamura, Goehring, Fukumoto, Geringer, Brandstad; Angier, Klemin, Jardine, Jungeblut, Kirschhoff, Zuelke, Bushman, Hoffman, Jr., C. Beckman, Vossler, Dow, Storz, Nicolini, Kaba, Manna, Smith, Barbero, Brusa, Betcher, Neuharth; Young, Nishimoto, Shimozaki, Christman, Schneider, Kurata, Kagawa, Wardrobe, Funamura, Nighswonger, Loduca, Sims, Fujinaka, Steenblock, Yamashita.



"Why the Chimes Rang"



Helm, Locke, Patterson, Hawkins, Schmierer, Tonini, Retzer, Shank, Eckness, Wiley; Lattin, Kolb, Horstkorta, Hibbard, Gnirk, Cooper, Devine, Delzer, Jensen, Archer, Bischel, Board, Fachner; Werner, Chaney, Dierks, Gross, Michelson, Hoppe, Schmidt, Limbaugh, Klapstein, Tolliver, McLachlan, Messing, Werner, Handel, Flaig, Castellaneli, Stuck, Limbaugh, Hickok, Ayres.

Christmas Pageant

Turnage, Journeay, Moore, Williams, Weigum, Eckness, McLaughlin, Dow, Clasen, Miller, M. Miller, Blehm, Ehrlich, Antrim, Schauer, Sherrow, Winter, Wagers, Wagenman, Tretheway, Hannan, Wiley, Moran, Stichel; Schmidt, Spurgin, Biliardi, Sims, Meidinger, Carlsen, Madden, Watson, Trick, Niessner, Mason, F. Miller, Wacker, R. Miller, Tinkle, Schneider, Timmons, Hildenbrand, Goehring, Handel, Seibel, Mason, Seibold; Garfolo, Schunke, Jenner, Gilbeau, Heon, Ruhl, Henne, Buckmaster, King, Fawcett, Mitchell, Lippert, Wentrup, Countryman, Gholz, Koenig, L. Buckmaster, Buck, Towle, Wall, Schmidt, Schnabel.





Thomas, Chaney, McLean, Shank, Tolliver, Sanguinetti,
Collins, Handel, Corell, Jungblut, Jacinto, Klapstein;
Merrill, Fachner, Maris, Briggs, Mills, Michelsen,
Pickering, Hunter.



Shank



Briggs

"Growing Pains"



Shank, McLean, Chaney, Klapstein,
Corell; Thomas, Briggs, Tolliver.



MISS MAURINE EMERT
Director

"The Royal Family"



Michelson, Pope, McDonald, Briggs, Patterson



McDonald, Michelsen, Briggs



Briggs, Siegalkoff,
Cormack, Ritchie,
Hickok, Beekman, *Locke, D.*
Pope, Ewing; McDonald,
Michelsen, Paterson.



Miss Bess Matthew
Director

Best of luck, Doug!
Miss L. Matthews
LS



Chaney, Winsor, Dettmer.



MISS IDA RINN
Director

"The Night of January 16th"



Handel, Smith, Beckman, McDonald, Barron, Patterson, Pope, Thompson, Stuck, Ewing; Sparlin, C.Randolph, Jacobsen, Winsor, Helm, Chaney, Board, Marshall, B. Randolph, Dettmer, Shank.

"The Patsy"



Dettmer, Ritchie



Sievers, Jacobsen, Beckman,
Randolph, Dettmer, Ritchie;
Marrs, Barron, Shank.



Shank, Randolph, Beckman;
Barron.



MISS IDA RINN
Director

