





Jim Haskell

"Sis" Little

Walter Biliardi

Native Sweet

1937

May Peirano
'38"

TOKAY

Joe Miller

*Richard
"Dixie"
"Mack"*

*Ernestine Cropper
"Shorty"*

*Lorraine
Reiman*

**COOL UNION HIGH SCHOOL
COOL CALIFORNIA**

THE DRAMA OF SCHOOL LIFE

In this Tokay the students can see the roles they have played in Lodi Union High School during 1937.

We have chosen Drama for our theme because all activity is drama and our school is a stage for both great and small roles.

The students have played parts in classes, organizations, music, school productions, and even the informal parts which are shown in the snaps.



D E D I C A T I O N

Miss Elizabeth McDole

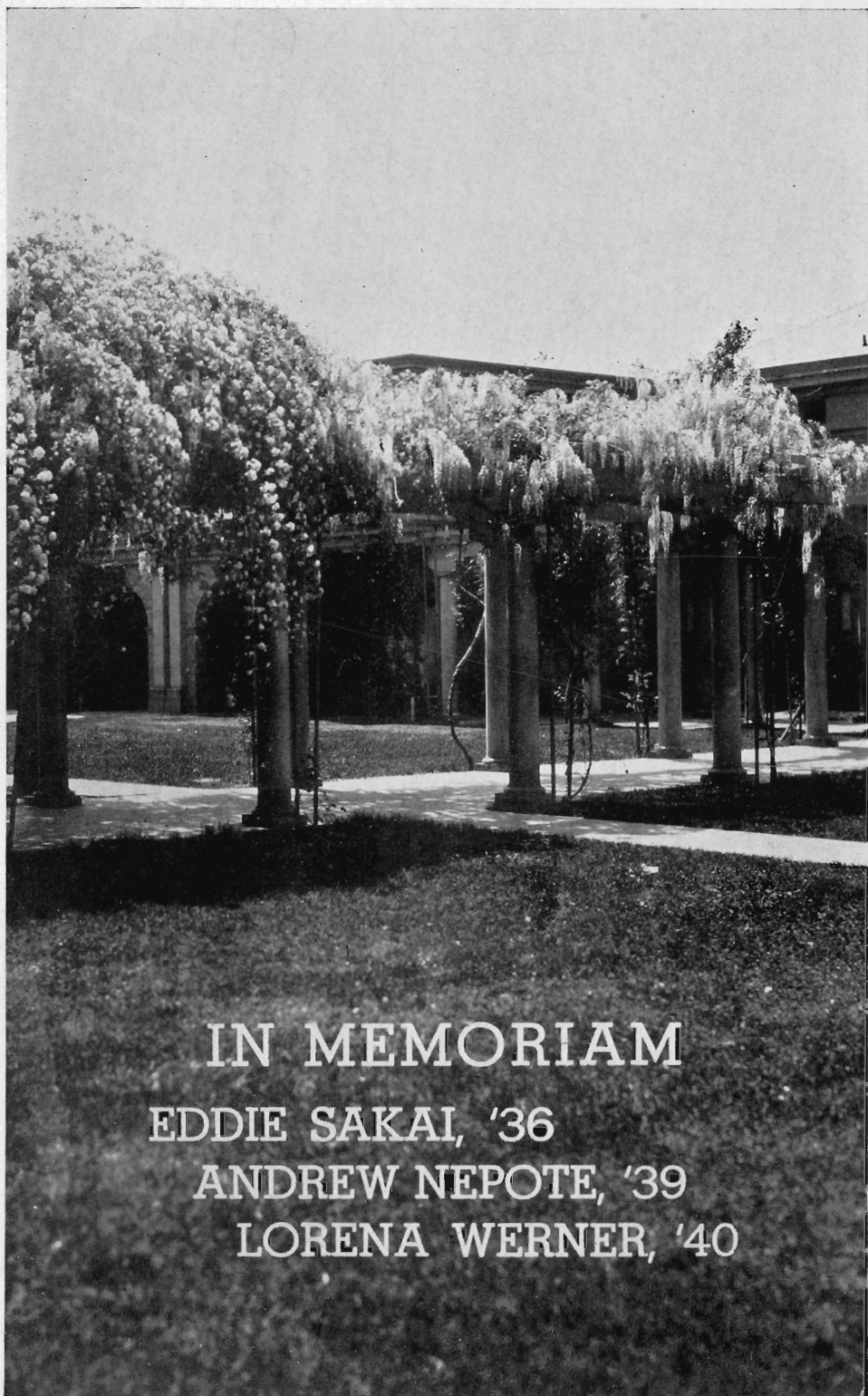
John Beards

Miss Elizabeth McDole, who has played an important role at Lodi Union High School, is not only the head of the English Department, but also adviser for the "Tokay."

For a number of years, she has wholeheartedly co-operated in producing a year book worthy of Lodi High School. Her pleasant personality and her great interest in this undertaking have won her deserved recognition.

We dedicate this, the 1937 "Tokay," to one whose originality and energy have been consistent throughout the years, Miss Elizabeth McDole!





IN MEMORIAM
EDDIE SAKAI, '36
ANDREW NEPOTE, '39
LORENA WERNER, '40



Leroy Nichols

THE
LIFE
RECORD
OF
EACH
ONE
OF
US

"All the world's a stage,
And all the men and women merely players:
They have their exits and their entrances."

It is to be hoped that every student in Lodi Union High School will find in this "Tokay" an authentic and satisfying record of his exits, his entrances, and his acting. He who has played his part well, whether the part was great or small, has given invaluable cooperation towards the success of the school year. The stage hand behind the scenes, the costume maker and the fitter, and the attentive listener in the audience, have contributed just as much to this success as the most brilliant star in the cast. Even the star depends upon the alertness of the prompter, the correct cues from those who have minor parts, the skill and dexterity of the property man and the right attitude of the listener.

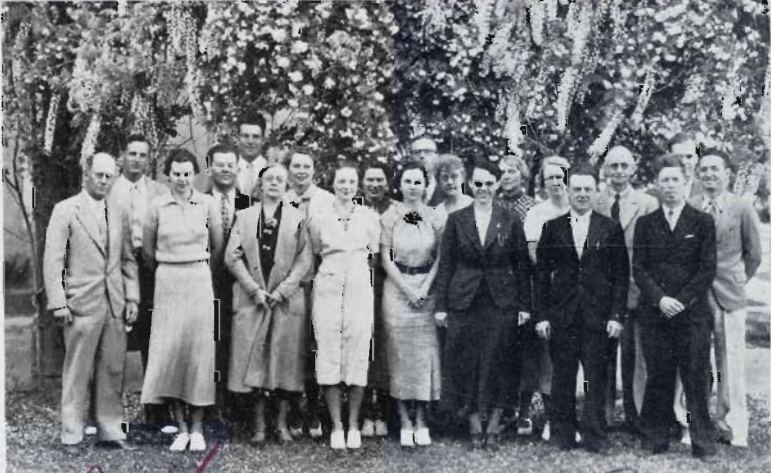
May the 1937 Tokay be a reminder that "All the world's a stage" and that the life record of each one of us on this great stage of the future will be noble only if we choose good parts and then master the intricacies of acting on this stage either in front of the footlights or behind the scenes.



Hoffman, Wassink, Loyka, Diekman, Smith, Hatch, Winsor, Crandall, Lantz, Conklin; McDole, Devine, Gealey, Erich, Crose, Barnebey, Hatfield, Higginbotham, Burrell, Davis, Holm. Not in picture: Weller, Berry, Dow, Rinde.

Maud H. Davis
Everest Borst

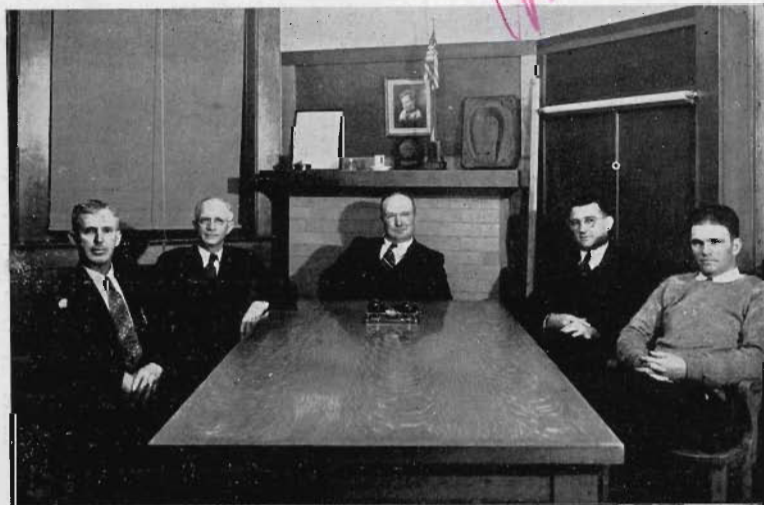
Aune [unclear]



Bell, Borst, Benjamin; Hagen, Frembling, Samuelson, Dalander, Pilkington, Taylor, Rinn, Reese, Trumbly; Nichols, Matthew, Graham, Bridges, Bassi, Willis, Halsey, Boone.

Faculty *Luis Bassi*
J. W. Chapsman

Trustees



R. J. Stuck, Walter Jahant, Neil Locke, Dr. W. J. Coffield, George Emde



Ralph Lewis
Vice President



Winifred Roach
Secretary



Ralph Tramontini
High Senior
Representative



Alvin Klipfel
Low Senior
Representative



Bernice Tramontini
President

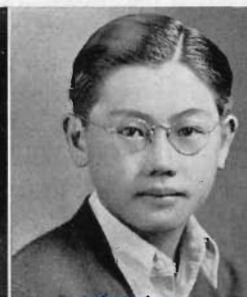
Carroll



Thelma Eproson
High Junior
Representative



Carroll Dow
Low Sophomore
Representative



Kinji
Kinji Hiramoto
High Freshman
Representative



Marlo Stark
Low Freshman
Representative

STUDENT COUNCIL

