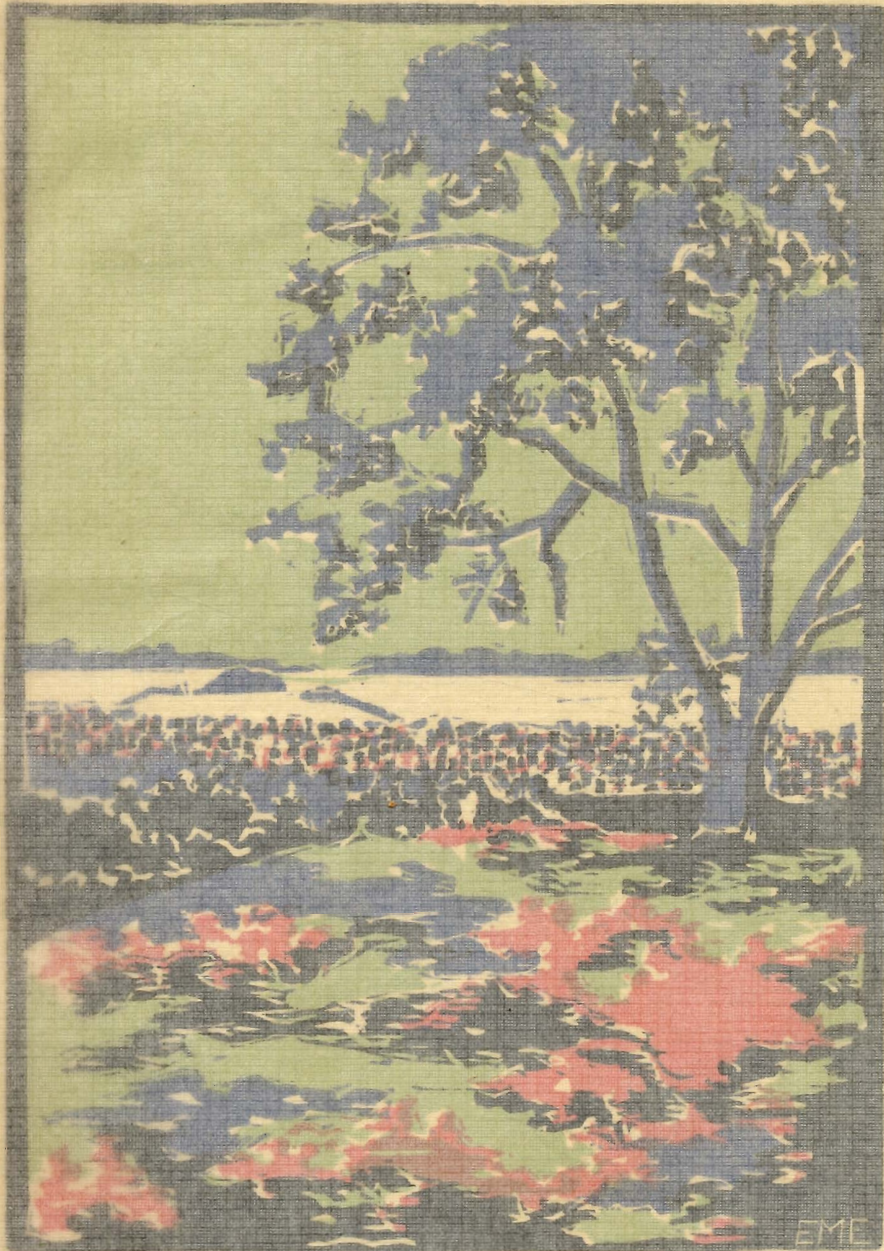




THE TOKAY 1931

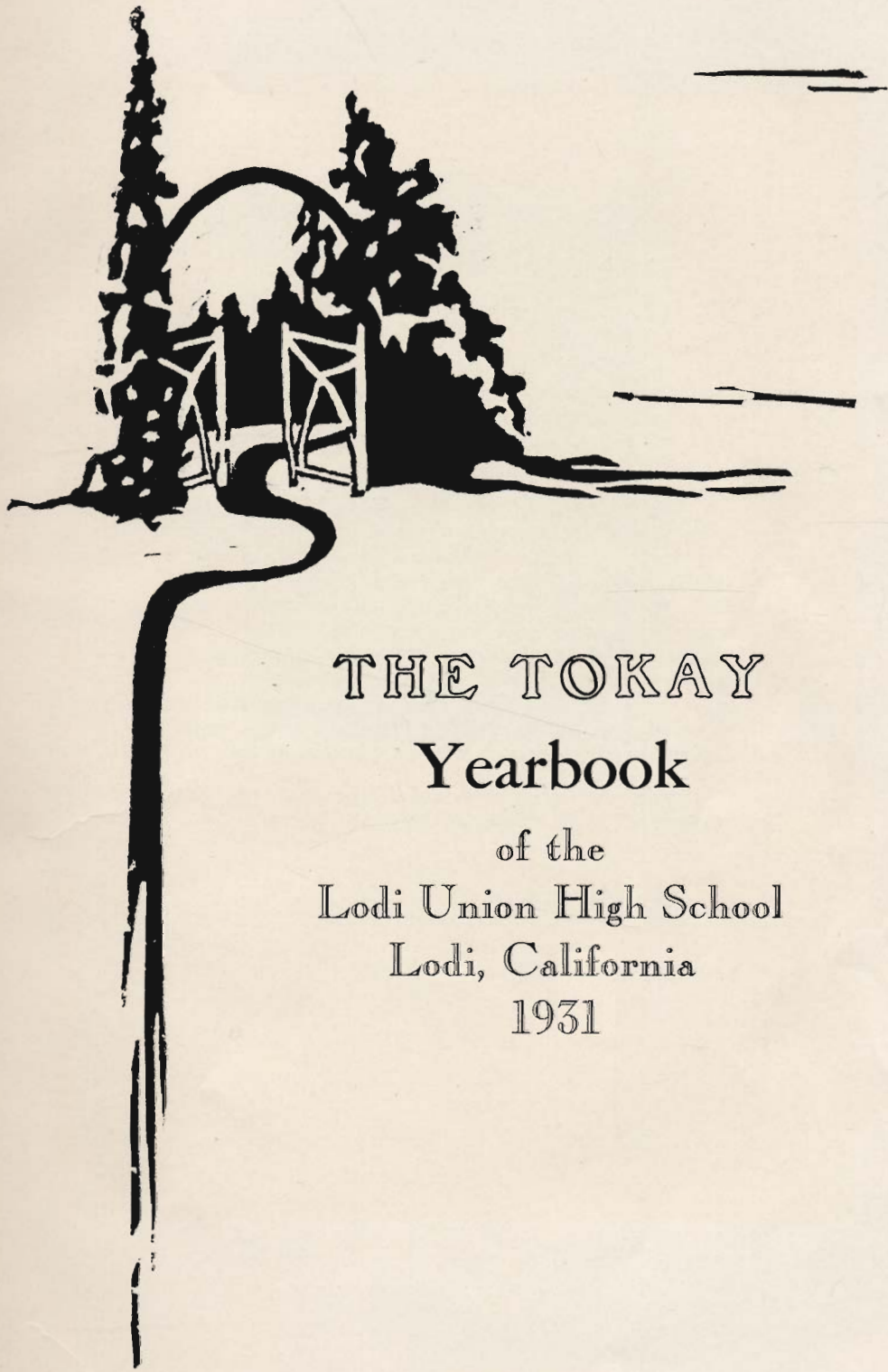
Ray Thompson
- Joe Forziati

Return Please
—||—



The Golden Gate

Ezra Ehrhardt



THE TOKAY

Yearbook

of the

Lodi Union High School

Lodi, California

1931

Foreword

Life is a series of gateways. Some of these gateways open easily at our knock; others, only after a struggle. Once we have passed through, never again can we retrace our steps.

The first gateway after we start on the journey of life opens upon school days. After graduation from the grammar grades, we enter high school. For some this gateway reveals a path of difficult ascent ending in a magnificent view; for others, a road of aimless turns bringing wasted hours and vain regrets. Before we finish the four years of high school, we have made the most significant and rapid growth of a lifetime. We have found ourselves and are eager to try our newly discovered powers. Upon graduation we stand upon the threshold of the next entrance, eager to explore the alluring vistas which are beckoning us.

With this thought in mind, the Staff has chosen "Gateways" as the theme for the 1931 "Tokay."



Dedication

To Mr. Herman Diekman through whose work in agriculture Lodi Union High School has received recognition not only in the state but in the nation as well, this book is dedicated.



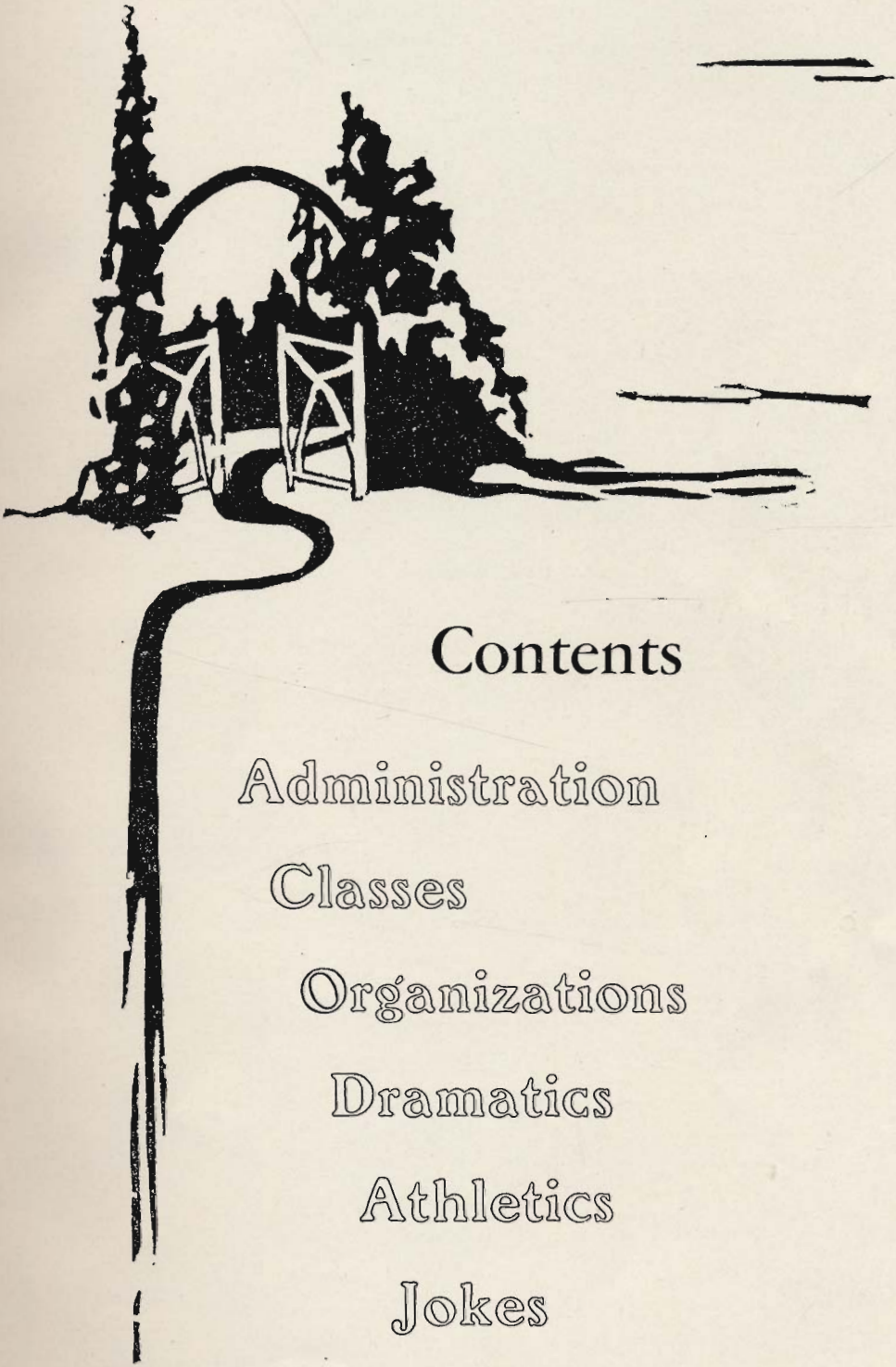
"Tokay" Staff



| | |
|--|-----------------------------------|
| Miss Elizabeth McDole..... | <i>Adviser</i> |
| Ward Smith..... | <i>Business Manager</i> |
| Elizabeth DeVinny..... | <i>Editor</i> |
| Gurdon Leete..... | <i>Assistant Editor</i> |
| Peter Marshall..... | <i>Assistant Business Manager</i> |
| Miss Loyda Barron..... | <i>Art Adviser</i> |
| Kenneth Hellwig..... | <i>Boys' Athletics</i> |
| Marcia Zelter..... | <i>Art Editor</i> |
| Lillian Post..... | <i>Calendar</i> |
| Henry Sato..... | <i>Assistant Art Editor</i> |
| Dorothy Ireys..... | <i>Girls' Athletics</i> |
| Ervin Waters..... | <i>Snaps</i> |
| Alice Field, junior reporter; Ariel Lipelt, typist; Anna- belle Tanaka, general assistant; Marie Veit, Music; | |
| Julia Lytle, senior reporter; Erna Fetzer, Exchanges. | |
| Margaret Taylor..... | <i>Dramatics</i> |
| Elizabeth LeFeber..... | <i>Alumni</i> |
| Francis Stewart, Catherine Holt, Lloyd Phipps..... | <i>Jokes</i> |
| Lloyd Engel..... | <i>Agriculture</i> |
| Martha Jacobsen; Edith McKenzie, Betty Jean Ashley, Leone Huber, junior assistants; Ellen Henning. | |



"Portals that lead to an enchanted land"



Contents

Administration

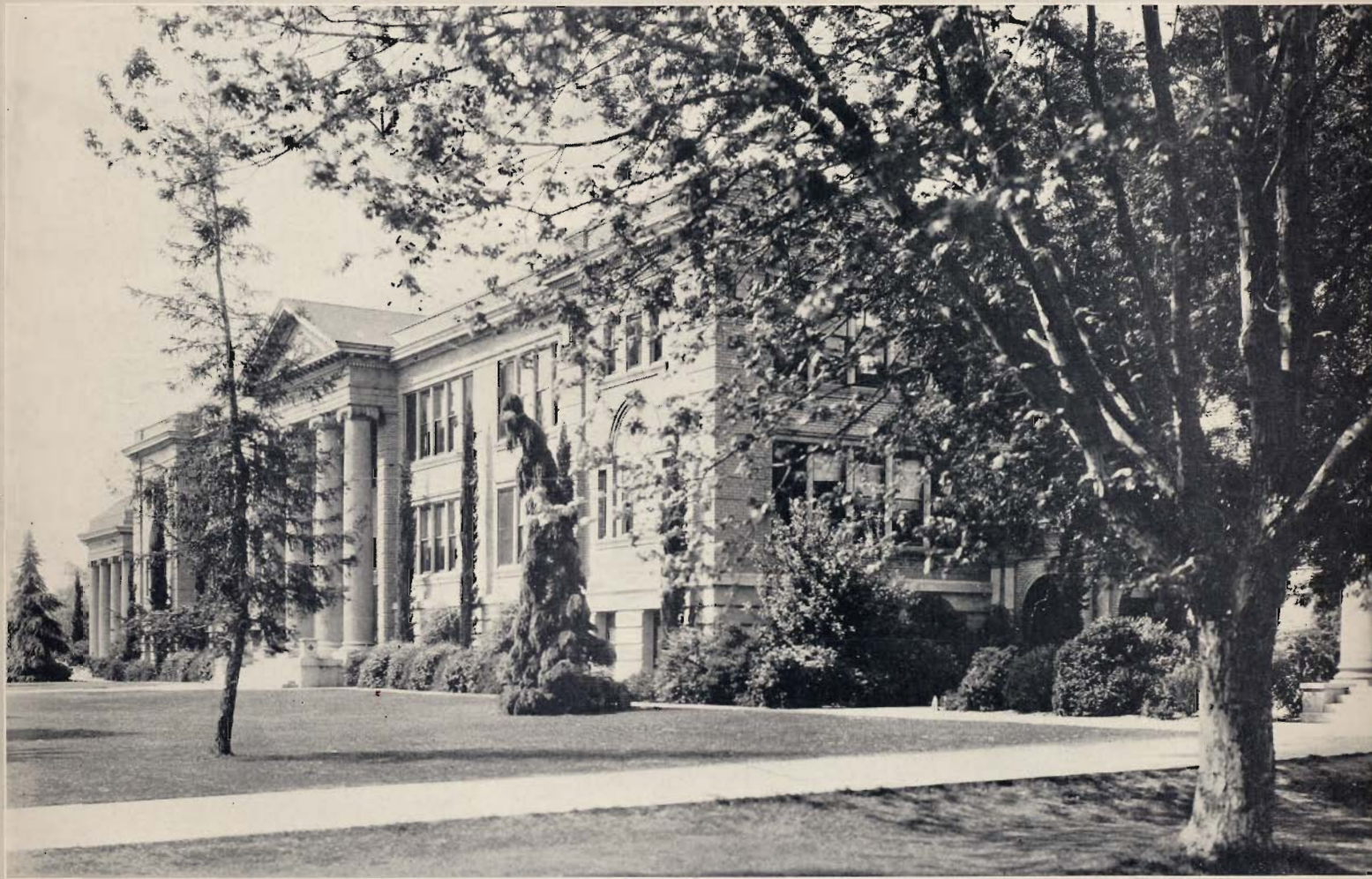
Classes

Organizations

Dramatics

Athletics

Jokes



"O, Friend! forever loved, forever dear!"



Administration

Sather Gate

University of California

Charles Crete



C. Dexter, Mrs. Florence M. Featherston, W. H. Crosswhite, W. E. Shipman, clerk; R. J. Stuck, president.

A Greeting from the Trustees

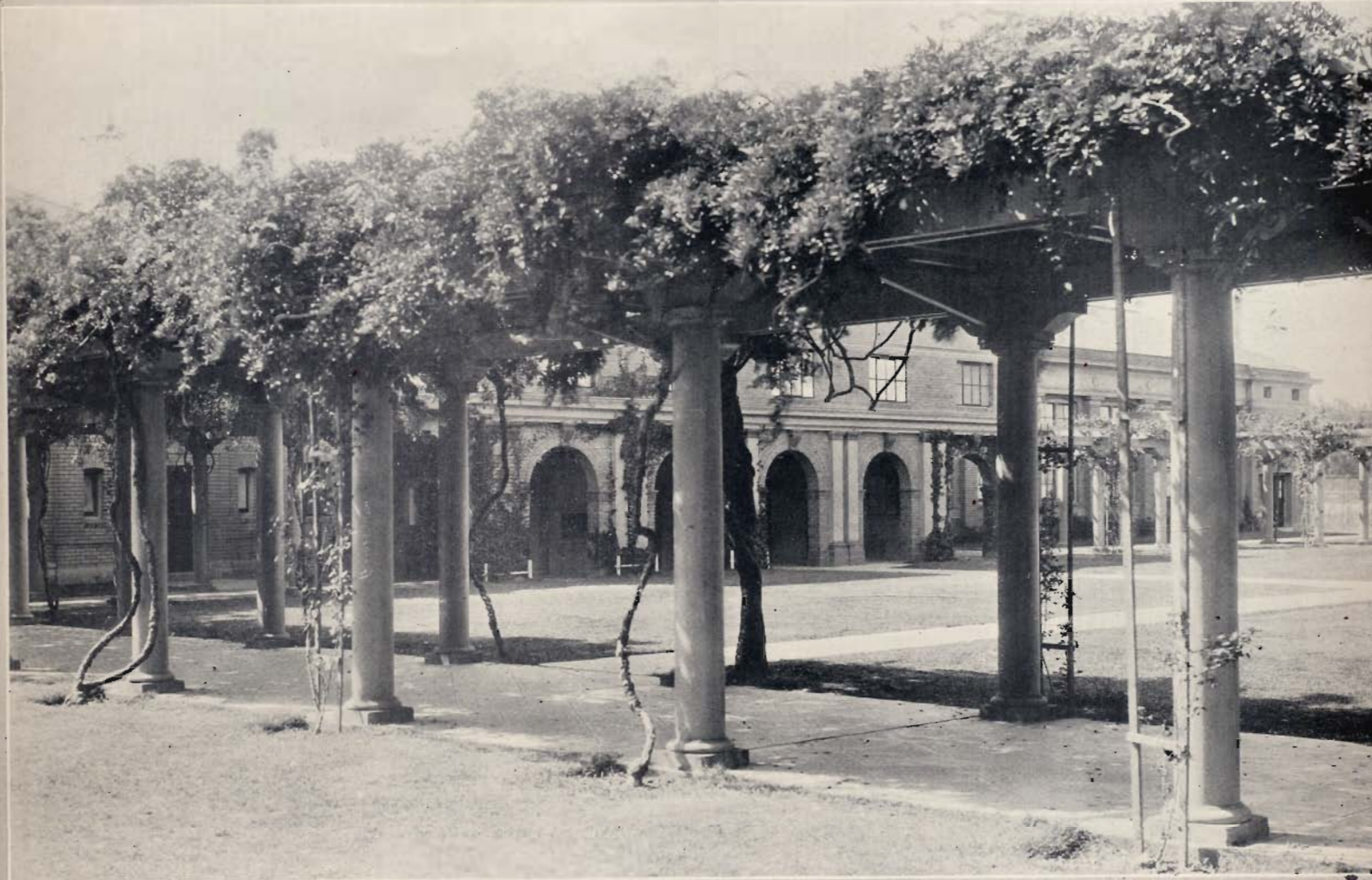
CONNECTED with every school are three bodies of individuals; first the student body, for whose education the school exists, then the faculty with the principal at its head, last the board of trustees. The relationship of the faculty to the student body is close and understood by everyone, but that of the trustees, not so evident. Yet the part that the trustees play in the life of the school is a very real one. They are responsible for the care of the plant used day after day by hundreds of boys and girls. They represent the people who made the school possible and who maintain it through succeeding generations of students.

The trustees of the Lodi Union High School, five in number, meet regularly at the school the second Tuesday of each month. No school debts can be paid without the signatures of three trustees, so many warrants are signed at each meeting. School problems are discussed with the principal and decisions, made. The interest of the trustees in the school is very vital and it is their hope that through the interest and loyalty of the three school bodies—student body, faculty, and trustees—that the Lodi Union High School shall move forward through the years to greater and greater usefulness.

Faithfully yours,

Florence M. Featherston

Secretary.



"Dear to the heart of youth the builder's perfect and centennial flower."



A Message to the Seniors

Another annual reminds us of fleeting time. The years seem to grow ever shorter as we pass through life. To the freshman entering high school, the four years seem a long look ahead. To the graduating senior, they have seemed very brief. Especially is this true if they have been happy and fruitful years. And no other four years of life are more significant.

For the members of our faculty, your development and progress are a constant inspiration and delight. You will shortly be our co-workers in business, in industry, in the professions, in every productive activity of life. Some of you will take our places to carry on for the youth of the next generation. And we have succeeded in our work only to the extent to which we have passed on to you the higher and finer things of life. May each of you find these elements in a truly abundant life.

Sincerely yours,

V. A. Rohrer



Faculty

Vivia Gambero
Commercial
Jeora Hatfield
Mathematics
Elta Livoni
English

Agnes Graham
History
Olga Heindl
Americanization
*Elizabeth McDole
English

Barney Hagen
Physical Education
Verne Hoffman
Agriculture
Gladys Pilkington
English

Stella Haglund
Physical Education
George Knoles
History
Louise Rice
History

*Sidney A. Halsey
Band and Orchestra
Bess Lewis
English
Charles Rinde
Science

*Head of department.



Faculty

*J. E. Conklin
Dean of Boys
Physical Education
Ruby Barnabey
English
*Beulah Burrell
Commercial
*Head of department.

*Maud Davis
Vice Principal
Mathematics
*Loyda Barron
Art
Bess Carroll
Dressmaking

Victor A. Rohrer
Principal
Margaret Berry
Librarian
*Ira N. Crose
Shop
Mechanical Drawing

Amos P. Reese
Vice Principal
Mathematics
Eleanore Blanchard
English
*Herman Diekman
Agriculture

*Signa Holm
Dean of Girls
Physical Education
Evan Borst
Social Science
*Carrie Erich
Home Economics



Faculty

*Ida Rinn
Spanish
Edith Story
Music

*W. Correll Smith
Chemistry
*Kathryn Taylor
Latin
Edna Herman
Business Manager

E. N. Spafford
Farm Mechanics
Lyda Wassink
Biology
Dorothy Leonard
Substitute in Latin

Alice Stewart
Home Economics
Frances World
English
Emily Bechtold
Secretary

Nellie Stone
Commercial
P. H. D. Winsor
Auto Mechanics

*Head of department.