

# CLASSES



DONALD SMITHSON



**ELLSWORTH ANGIER**

"His eyes twinkled with a merry light."  
Football—3, 4; Orchestra—1, 2, 3, 4; Band—1, 2, 3, 4.

**NATHAN ARCHER**

"Let not the man be trusted that hath no music in his soul."  
Orchestra—1, 3, 4; Band—1, 2, 3, 4; Ass't Band Leader, 4.

**NORTON ARCHER**

"He is as full of valour as of kindness."  
Orchestra—1, 2, 3, 4; Student Program Committee, 4.  
Mr. Baxter in "Seventeen"—4; Teddy in "Golden Days"—4.

**WILLARD BECKMAN**

"None but the noblest passions to inspire."  
Football—2, 3, 4; Basketball—3, 4; "Ag" judging team—3; President "Ag" Club—3; Mr. Parcher "Seventeen"—4.

**EDWARD BLEWETT**

"So long a-growing, and so leisurely."  
Track—3, 4.

**LUCILLE BUCK**

"To be of service rather than to be conspicuous."

**VERA BUCK**

"Her glossy hair was clustered o'er her brow."  
Orchestra—1, 2, 3, 4; Basketball—4.

**ANNE BUTTLE**

"A fair exterior is a silent recommendation."  
Tennis—3, 4.







**ROY BUTTLE**

"Silence is more musical than any song."  
Entered—4; Basketball—4; Track—4.

**KATHERINE DAVIS**

"So full of summer warmth, so glad, so healthy, sound and clear and whole."  
Tokay Staff—3; Flame Staff—4; Basket Ball—1, 3; Volley ball—3; Baseball—3; Tennis—3; Felice in "Golden Days."

**JENNIE DOTSON**

"Thou art a scholar."  
"Flame" Staff—4; Mrs. Baxter in "Seventeen"; Chorus in "Miss Cherryblossom." Mrs. Simmons in "Golden Days"—4.

**EVELYN DUTSCHKE**

"And this she was, so pure and bright, and in her natural spirit gay."  
Basketball—1, 2, 3; Volleyball—1, 2, 3; Baseball—1, 2, 3; Mary Brooks in "Seventeen"—4; Bridget O'Harrigan in "Lady Frances"—4. Patty in "Golden Days"—4.

**MARGARET ELLIOTT**

"Gather ye rosebuds while ye may."  
Class Sec.-Treasurer—2; Class Representative—4; "Flame" Staff—4; "Tokay" Staff—4.

**MARION ELLIOTT**

"It is good to lengthen to the last a sunny mood."  
"Daddy Long-Legs"—1; "Flame" Staff—4; "Tokay" Staff—4; Cheer Leader—4; Betsy in "Golden Days"—4.

**CLARENCE FERDUN**

"Tis perseverance that prevails."  
Entered—2; "Ag" judging team—3.

**EULA FORD**

"A woman's nay doth stand for naught."  
"Miriam" in "Lady Frances"—4; Chorus "Once in a Blue Moon"—4.

ROBERT FULLER

*Bob Fuller*

"A clean mouth and an honest hand will take a man through any land."  
Student-body yell leader—3; Football—3, 4; Track—4; Class President—4.

ISAMU FUNAMORA

"Little in speech but swift in action."  
Baseball—1, 2; Football—3, 4; Track—3, 4.

WENDELL GANNON

*Wendell Gannon*  
"An athletic star who never played to the grandstand."  
Class Representative—1; Class President—2; Student-body Secretary—3; Football—2, 3, 4; Basketball—3, 4.

ALFRED GATZERT

"First in the council hall to steer the state, And foremost in the tongue debate."  
Class President—1; Class Representative—2; Cum Laude honors—1, 2; Football—3, 4; Basketball—3, 4; Basketball Captain—4 Edgar in "Golden Days"—4.

EDMUND GENTNER

"Faithful to friends and work alike."

AGNES GILL

"Solitude is sometimes best society."  
Chorus in "Once in a Blue Moon"—4.

NEIL GORDON

"Must I budge? Must I observe you? Must I stand and crouch under your testy humor? Property Manager—4.

LOUIS GRANLEES

"Oh, young Lochinvar is come out of the west."  
Entered—4; Orchestra—4; Band—4; Track—4.







**RUTH HATFIELD**

"The mildest manner and the gentlest heart."

**PEARL HAUGE**

"Sweetness is hers and unaffected ease."  
Entered—4.

**GRANT HEIL**

"Discretion in speech is more than eloquence."

**HOWARD HESSELTINE**

"I vest myself a bit, and then I vest again."  
Football—2, 3, 4; Track—4.

*Hess*

**HORACE HIBBARD**

"Nothing so difficult but may be won by industry."  
Prize Poem "Book Week"—4; Track—4.

**HAZEL HIGGINSON**

"A possessor of all womanly qualities."

**THOMAS HODGSON**

"I am the only one of my friends I can rely on."  
Football—3, 4; Chorus "Love Pirates of Hawaii"—2.

**MARCIA HOLBROOK**

"A pattern girl of girls  
All covered and embowered in curls"  
Tokay Staff—3; Class Sec-Treasurer—3; Asst.  
Editor "Flame"—4; Asst. Editor "Tokay"  
—4.

*Marcia Holbrook*

**JAMES HOUCK**

"An open countenance often conceals close thoughts."

Entered—3; Orchestra—3, 4; Band—3, 4; Chorus "Miss Cherryblossom"—3.

**GERALDINE HOWARD**

"Of stature fair and slender form."

Chorus in "Love Pirates of Hawaii"—2; Glee Club—2; Chorus in "Once in a Blue Moon"—4.

**WARREN HUNTING**

"So brimful of this merry vigorous life."

Orchestra—4; Band—3, 4.

**ROGER INGRAM**

"My only books were womans' looks.

And folly's all they've taught me."

Football—2.

**KARL JACK**

"A bold, bad man."

Orchestra—3, 4; Band—3, 4; Solon Tucker in

"Come Out of The Kitchen"; Genesis in

"Seventeen." Frank in "Golden Days"—4.

**RUTH JAMES**

"Her voice was ever soft, gentle, and low."

**LINDSAY JEWETT**

"If he be not in love with some woman, there is no believing old signs."

Football—2, 3, 4; "Ag" judging team—3;

"Ag" Club President—4; President Student

Body—4.

**HOLLIS JOHNSON**

"Sweet and demure."

Glee Club—2; Baseball—1, 2, 3, 4; Basket-

ball—1, 2, 3, 4; Volleyball—1, 2, 3, 4;

Track—1.







**VIOLET KENEFICK**

"Nor know we anything so fair as is the smile upon her face."  
 Basketball—2, 3, 4; Volleyball—2, 3, 4; Hockey—3; Baseball—1, 2, 3, 4; Tennis—3; Class president—3; Lola Pratt in "Seventeen"—4; "Flame" Staff—4; "Tokay" Staff—4; Elaine in "Golden Days"—4.

**MARGARET KETTLEMAN**

"As sweet a disposition as anyone could wish."  
 Class Vice-President—4; Basketball—1.

**VERNA KETTLEMAN**

"Who speaks kind words hears kind echoes."  
 Class representative Girls' League—4; Chorus in "Lady Frances"—4; Basketball—1.

**MARION KOCH**

"Silence is but evidence of thought."  
 Entered—3.

**BETH LANDBACK**

"The fruit that can fall without shaking, indeed, is too mellow for me."  
 Baseball—2; Chorus "Miss Cherryblossom"—3.

**IDA LERZA**

"Not o'er stepping the bounds of modesty."  
 Field-day Captain—4.

**EMMA LINDE**

"We seldom heard her speak."  
 Typewriting award—2.

**ESTELLE LITER**

"The mind, the music breathing from her face."  
 Chorus "Lady Frances"—4; Chorus "Once in Blue Moon"—4.

STEWART LOCKE

"I would make reason my guide."

MABEL MAGUIRE

"Zealous, but modest."

HARRY MARTIN

"That which he will, he does, and does well."  
Football—3, 4.

MARIE MASUI

"She would do anything to serve a friend."  
Basketball—2; Baseball—4; Chorus in "Miss  
Cherryblossom—3."

GRACE MITCHELL

"Silence is more eloquent than words."  
Entered—3.

MARY MOLONEY

"Her eyes, deep blue, smile constantly."  
Entered—3.

ORVILLE MYERS

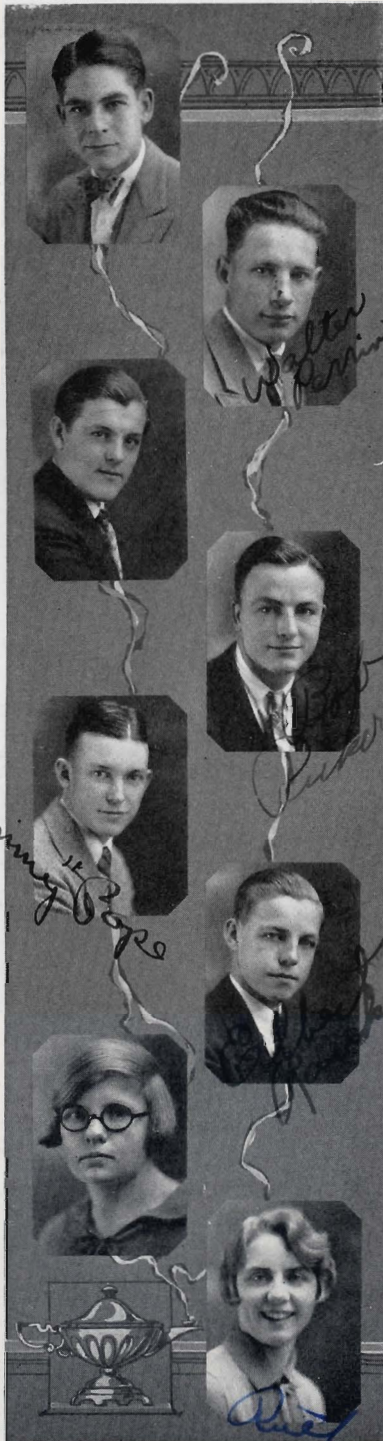
"A little nonsense now and then is relished  
by the best of men."

IRMA NUSZ

"A mind at peace with all around."  
Baseball—2, 3, 4; Basketball—2, 3, 4; Volley-  
ball—2, 3.  
Chorus in "Love Pirates of Hawaii"—2.







**HUGH PADDLEFORD**

"Young fellows will be young fellows."  
 Entered—2; Assl. Business Manager "Flame"  
 and "Tokay"—2; Property Manager—2;  
 Business Manager "Flame" and "Tokay"—  
 3; Charlie in "Come Out of the Kitchen"—  
 3; Tennis—3, 4; Willie in "Seventeen"—4;  
 Editor "Flame" and "Tokay"—4. Billy in  
 "Golden Days"—4.

**WALTER PERRIN**

"Deep blue of e'e."  
 "Ag" judging team—4.

**KENNETH PHILLIPS**

"And he had a very good wit."  
 Orchestra—4; Band—4; Chorus in Love  
 Pirates of Hawaii—2; Chorus in "Miss  
 Cherryblossom"—3.

**ROBERT PICKERING**

"His limbs were cast in manly mold,  
 For hardy sports and contests bold."  
 Football—2, 3, 4; Track—3.

**JAMES POPE**

"A man am I grown; a man's work must I  
 do."  
 Class yell leader—2, 3; Orchestra—2, 3;  
 Band—2, 3.

**ELBERT RANKIN**

"I'll be merry and free, I'll be sad for no  
 one."  
 Entered—2.

**MILDRED RATHBUN**

"Illustrious conqueror of common sense."  
 Basketball—1; Orchestra—3.

**RUTH RINN**

"Shall I compare thee to a Summer's day."  
 Class Sec.-Treas.—1; Basketball—1; Class  
 Rep. Girls' League—3; Class Sec.-Treas.—4;  
 May Parcher in "Sevxenteen"—4; Marion in  
 "Golden Days"—4.

**PAUL RINN**

"With whom shall I argue, And who shall be my opponent?"  
Class Vice-President—3; Football —2, 4; Basketball—3.

**EVELYN SCOTT**

"Gay was her mien, her humor light."  
"Flame" Staff—4; Miss Slissy in "Golden Days"—4.

**EDNA SHARP**

"Now grave, now gay, but never dull or pert."  
Basketball—1; Chorus in "Miss Cherryblossom"—3; Chorus in "Once in a Blue Moon"—4.

**PETER SHEPTENKO**

"A live heart lives long."

**BEATRICE SHIPMAN**

"As pure as a pearl and as perfect."  
Basketball—1; Volleyball—2; Chorus "Miss Cherryblossom" — 3; "Tokay" staff — 3; "Flame" staff — 4; Vice-president Girls' League—3; President Girls' League—4; Vice-President Student Body—4; Auntie Kirk in "Golden Days"—4.

**WILLIAM SIEMERING**

"Oh, wasn't it grand when he came down the field like a thunder-charged cloud!"  
Football—2, 3, 4; Football Captain—4; Basketball—3, 4; Track—3, 4.

**DELBERT SILER**

"The truly brave are soft of heart and eyes."  
Entered—4; Football—4; Property manager basketball team—4.

**GERTRUDE SMITH**

"There is no lady in the land is half so sweet as 'Sally.'"  
Entertainment Committee Girl's League—4; Chorus "Lady Frances"—4; Field Day Captain—4.







**HENRY SMITH**

"Self-trust is the first secret of success."  
Football—3, 4; Track—3.

**DONALD SMITHSON**

"I live for those who love me,  
Whose hearts are kind and true."  
Entered—3; Football—4; Chorus "Once in  
a Blue moon"—4.

**RUTH SNYDE**

"She is what is just and honorable."  
Basketball — 1; Civic Committee Girl's  
League—3; Field Day Captain—3; Field Day  
Major—4.

**BEATRICE SOUCIE**

"She speaks, behaves, and acts just as she  
ought."  
"Flame" Staff—4; Trella in "Golden Days"  
—4.

**FRANK STEWART**

"With all good grace to grace a gentleman."  
Entered—4; Basketball—4; Bob Harrington  
in "Once in a Blue Moon—4; Dick in "Gold-  
en Days"—4.

**EDWIN TATE**

"I must away to the wooded hills and vales."  
Orchestra—3, 4; Band—3, 4; Togo in "Miss  
Cherryblossom"—3; Johnny Watson in "Sev-  
enteen"—4; Chorus "Once in a Blue Moon"  
—4; Art Editor "Tokay"—4.

**MYRON TOWER**

"Tall oaks from little acorns grow."  
Class Yell Leader—4; "Flame" staff—4.

**RUTH TROUTNER**

"As pure in thought as angels are. To know  
her was to love her."  
"Flame" Staff—4.

MARION VALLEM

"You'd have known her by the merriment that sparkled in her eyes."  
Chorus "Love Pirates of Hawaii"—2; Cantata "The Moundbuilders"—2; Annabelle in "Golden Days"—4.

EDITH VAN GELDER

"Words pass away, but actions remain."  
Orchestra—3, 4; Field Day Captain—4.

IRWIN WAKEFIELD

"Thought is deeper than all speech."  
Class representative—3; Football—3, 4.

EDWIN WERNER

"And he himself is tall and thin."  
Orchestra—3, 4.

EDITH WILSON

"Gay good nature sparkles in her eyes."  
Typing award—1; Girls' Athletic Manager—4; Ethel Boke in "Seventeen"; Basketball—1, 2, 3, 4; Baseball—1, 2, 3, 4; Volleyball—1, 2, 3, 4; Tennis—2, 3; Hockey—3, 4.

WINIFRED WOODS

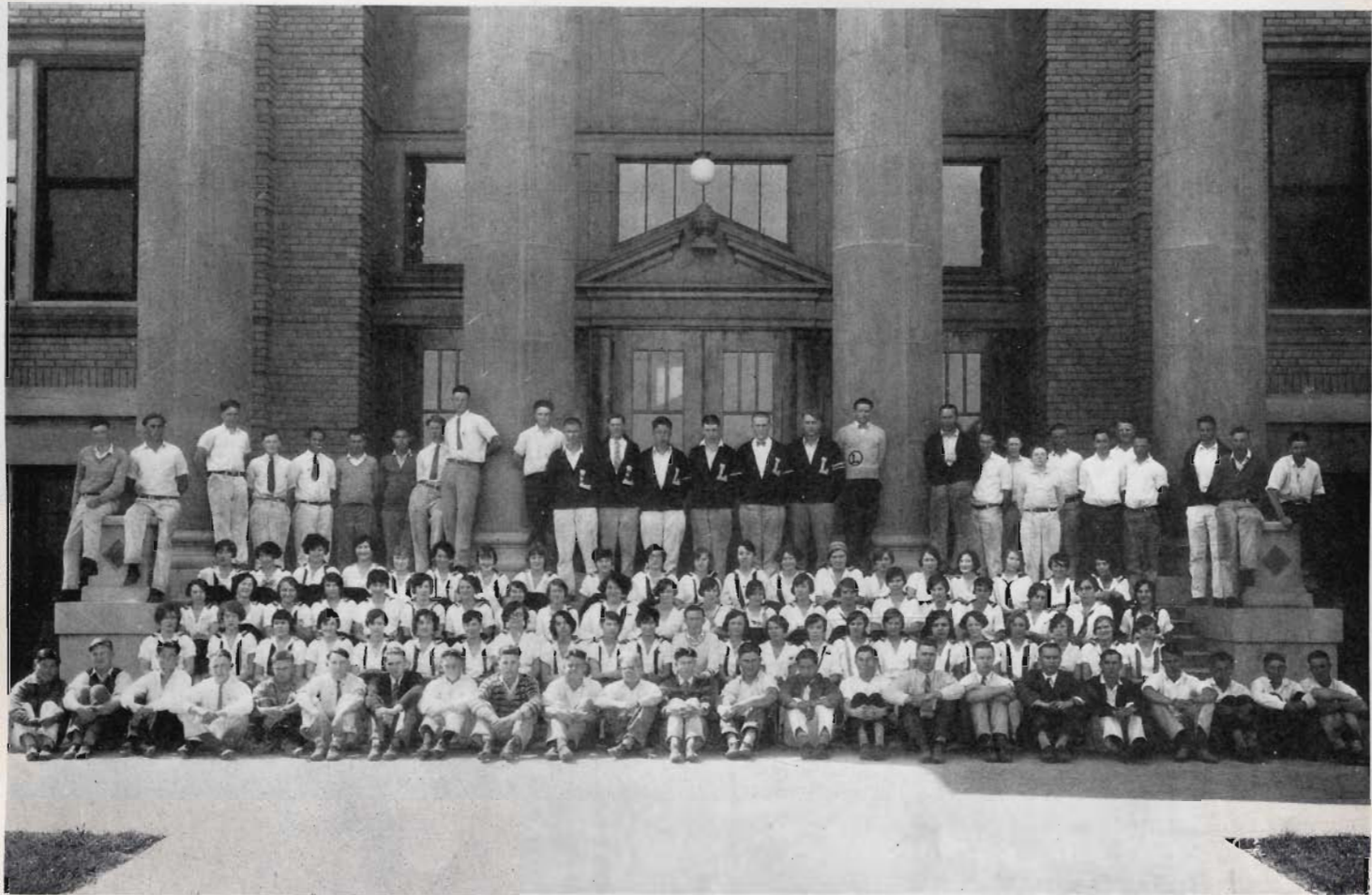
"Gay good nature sparkles in her eyes."  
Chorus "Love Pirates of Hawaii"—2; Cantata "The Mound Builders"—2; Chorus "Miss Cherryblossom"—3; Cheer Leader—4.

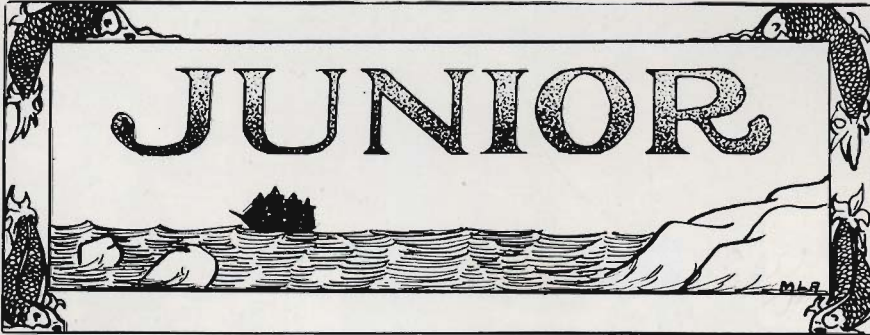
HORACE WOODWORTH

"Care to our coffin adds a nail, no doubt; and every grin, so merry, draws one out."  
Class President—1; Class Representative—2; Student-body Yell Leader—4; Joe in "Seventeen"—4; Charlie in "Golden Days"—4. Athletic Manager—4; Tennis—3.









## Junior Class History

---

Amidst cheers, good wishes, and much handkerchief waving, the good ship '28 set sail on October 1924 from the small port Grammarschool. The port of Commencement seemed far off, for the great stretch of high school sea separated the two harbors. The turbulent dangerous character of these waters is well known.

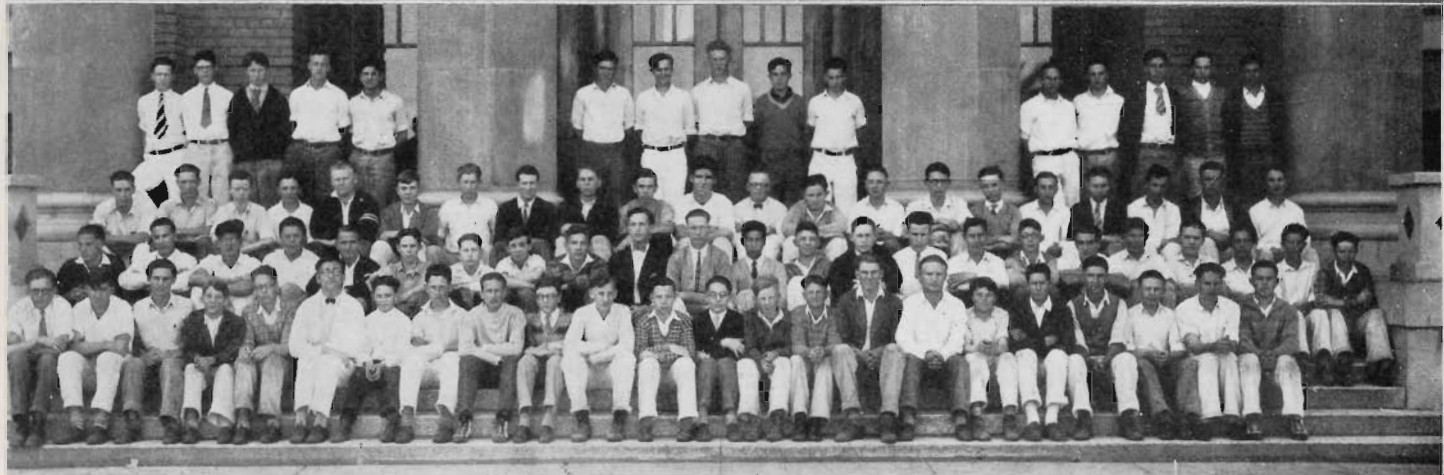
Spirits of the passengers were high until squalls and heavy seas were encountered in the latitude of Algebra 1 and Latin 1. Thus mal de mer claimed its usual victims; some, discouraged over this first encounter with the contrary winds of education, had to be put ashore at semester ports of call, and sailed with us no more. However, most of the passengers are still together. When spirits ran low, the thoughts of another vacation port is stimulating.

There have been pleasant companionships and liberal diversions during the crossing. Of those who lived thru the first days and developed reliable sea legs, many have become distinguished members of the orchestra or band; participants in inter-class debates, actors in plays, student body officers, or members of the staff. The athletic achievements of our men are so well known that we may modestly leave their praise to others.

As to the women—see them, lithe and graceful on the tennis court, or satin-slippered and filmy gowned, delighting their audience in the Junior Play! These gallant, athletic men, these modern, alert women are helping to make enviable history for the '28! Bless Her!

MATHILDA SCHLICHTER.







## Sophomore Class History

---

"We have met the enemy and they are ours" was said by Oliver Hazzard Perry. This may also be said by the Sophomores because we won the Interclass Relay Race and received the cup which is presented to the winner.

Some other stars in our crown are: Tony Donadio, Captain Elect for next year's basketball team, and a member of the All Star State Football team; Bonnie Bare, Prima Donna of the operetta, "Once in a Blue Moon," and Goula Wann, who played the violin in the California All-state Symphony orchestra.

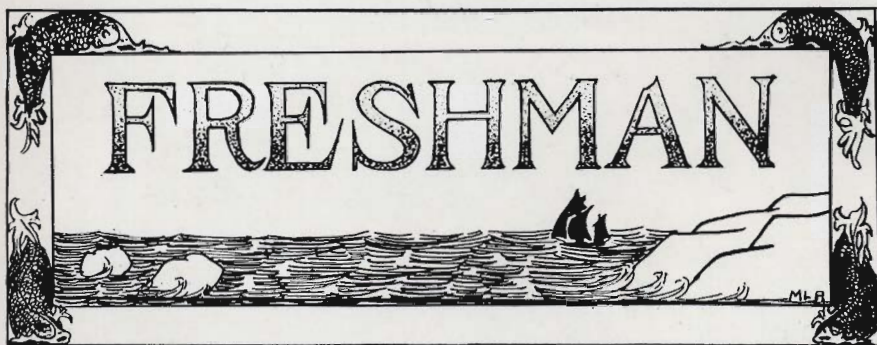
At the beginning of the term we elected the following class officers: Catherine Clark, President; Bonnie Bare, Vice President; Elma Henning, Secretary and Treasurer; and James Conklin, Class Representative.

Do we deserve a place in the sun? I'll say we do!

EDNA CHAPLIN







## Freshman Class History

---

"Pretty green but they'll learn" remarked the more experienced hands, as we land-lubbers came aboard. Most signed up, but there were rumors that a few had to be shanghaied. This much we can truthfully say—we are the long and the short of the Lodi Union High School, Irwin Newcomb, Ward Smith. Moreover, our brains—ahem—are everywhere in evidence. Have we not representatives in band, orchestra, and football team? Werner, Burnett, and Newcomb all won block letters, and several of our members received circle L's.

All in all we like this life. Had to have our passports vised several times, and a few had to be summoned to the Captain's quarters before we got down to work. To be sure, the library might have had a few more books about blood-thirsty Buccaneers and Sea Tories, who armed to the teeth searched the bounding main for that rich prize from Bab-el-Mendeb! But on the whole it's a great life, ye ho, lads, ho!

Officers in command were as follows: Charles Hackel, President; Chester Harder, Vice-President; Reuben Burgsthaler, Secretary; George Gannon, Class Representative.

Lodi has no more loyal men and true than those who rally under the banner of '30!

MARIAN LASELL.





THE LIBRARY  
 AND SO I FIND IT WELL TO COME  
 FOR DEEPEK REST TO THIS STILL ROOM;  
 FOR HERE THE HABITS OF THE SOUL  
 FEEL LESS THE OUTER WORLDS' CONTROL.



DEAR STEPS THAT  
 LED US DAILY  
 WHERE ALL WAS  
 FAIR AND FINE;  
 WHERE WE PLAYED  
 AND WORKED TOGETHER  
 IN THE DAYS OF  
 AULD LANG SYNE.



AUDITORIUM  
 HERE ONLY GOOD HAS  
 SPOKEN; HERE HONOR  
 CALLS;  
 HERE YOUTH SEES  
 THE VISION -- IN ALMA  
 MATER'S WALLS.

