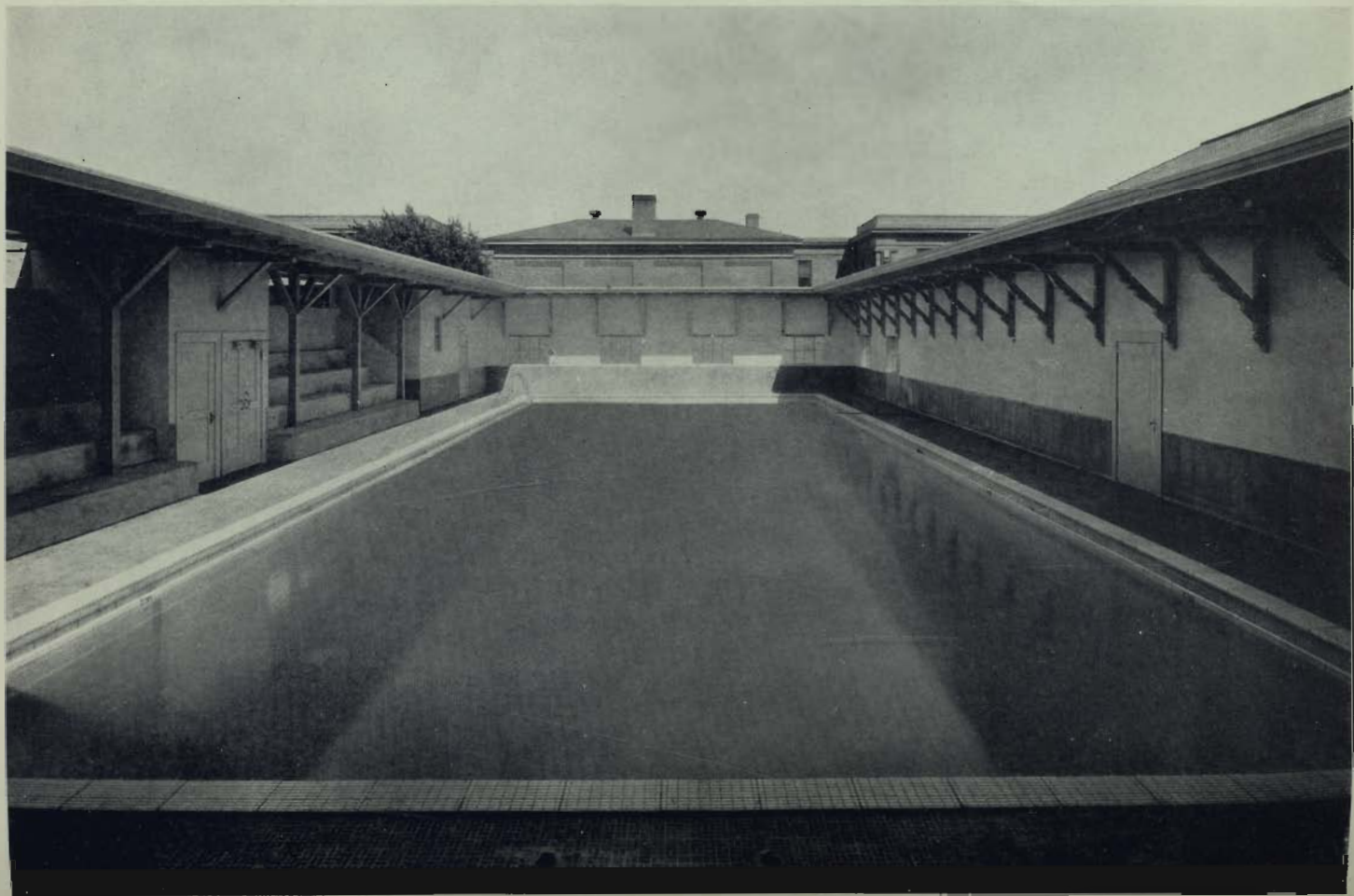




THE TOKAY 1927

Miss Kathryn Leach
209 Flora St.
Lodi, Calif.
Year of 1927.



SHIPS

A fleet of ships is setting sail upon the Sea of Life.
There are graceful yachts
With white sails flashing in the sun,
Clean-cut bows parting the blue-green waves
And sending up a spray of rainbow mist,
Slight, swan-like craft—not built for strength, but beauty.

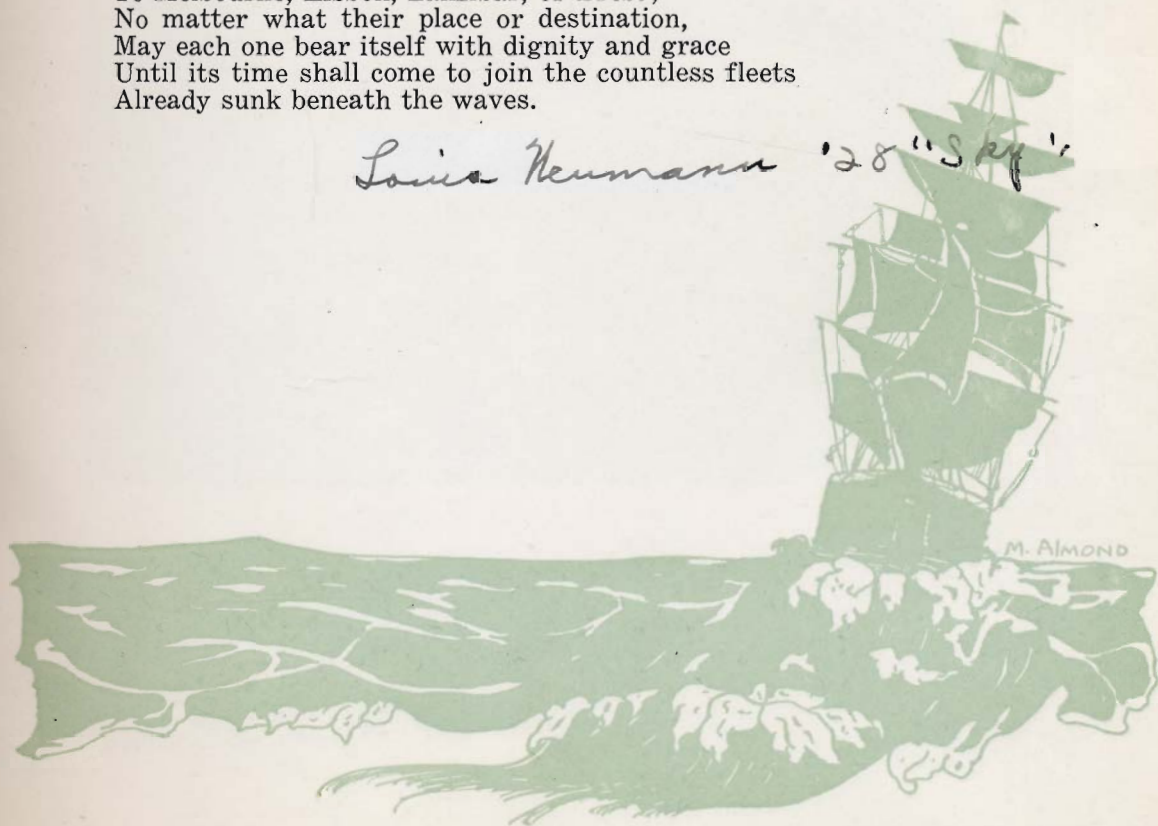
There are sturdy steel war ships
Thrusting their hulls, huge shells of metal plates,
Into the mountains of water, fearlessly, unflinchingly,
Confident in their brute strength,
Flinging a challenge to the elements.

There are skiffs, cat-boats, trawlers
Lying at anchor in the harbor—fishing;
And here and there, perhaps, a row-boat drifting aimlessly,
Fearful of venturing out, lest some large wave
Or angry wind should crush it.

The stronger ships may sail to Naples, Tokyo,
To Melbourne, Lisbon, Zanzibar, or Brest;
No matter what their place or destination,
May each one bear itself with dignity and grace
Until its time shall come to join the countless fleets
Already sunk beneath the waves.

Louis Neumann

'28 "S. P. F."



TO
MISS LOYDA BARRON,
whose lovely service is to
open youthful eyes to
Beauty and whose gentle
personality has endeared
her to Lodi Students, this
Annual is Dedicated.

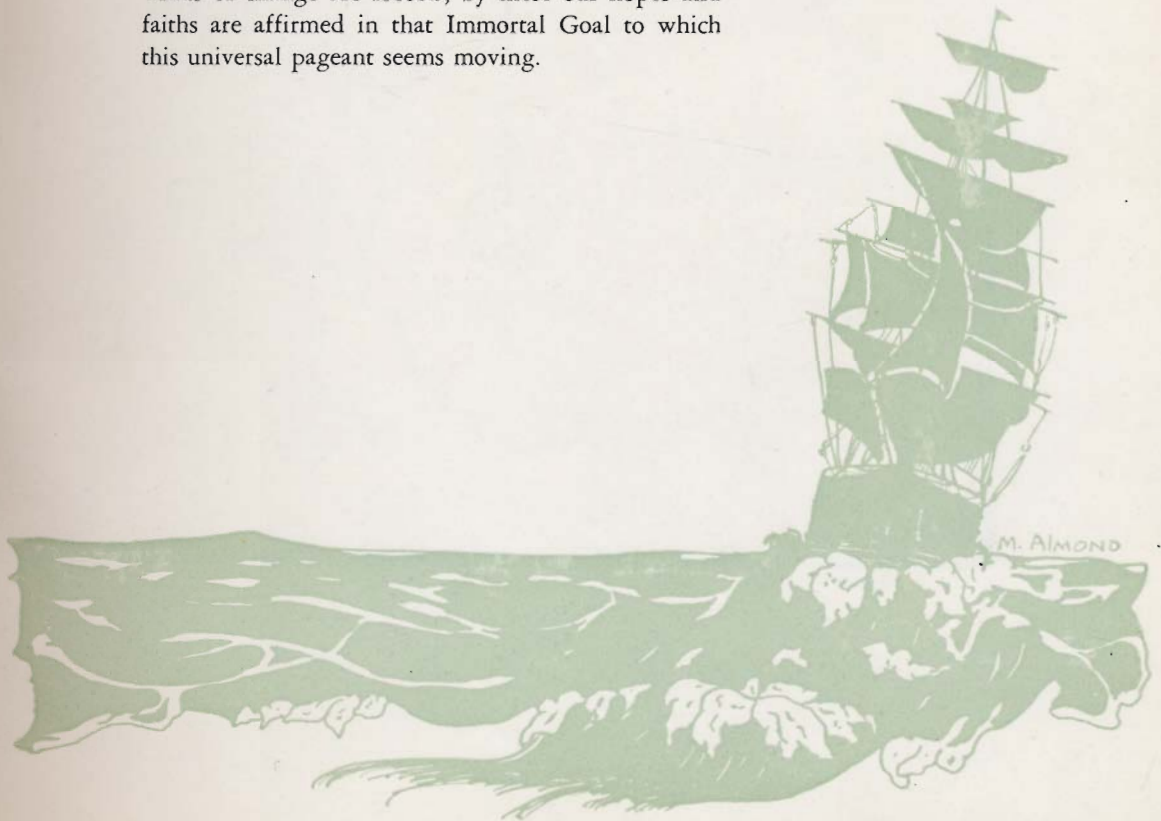




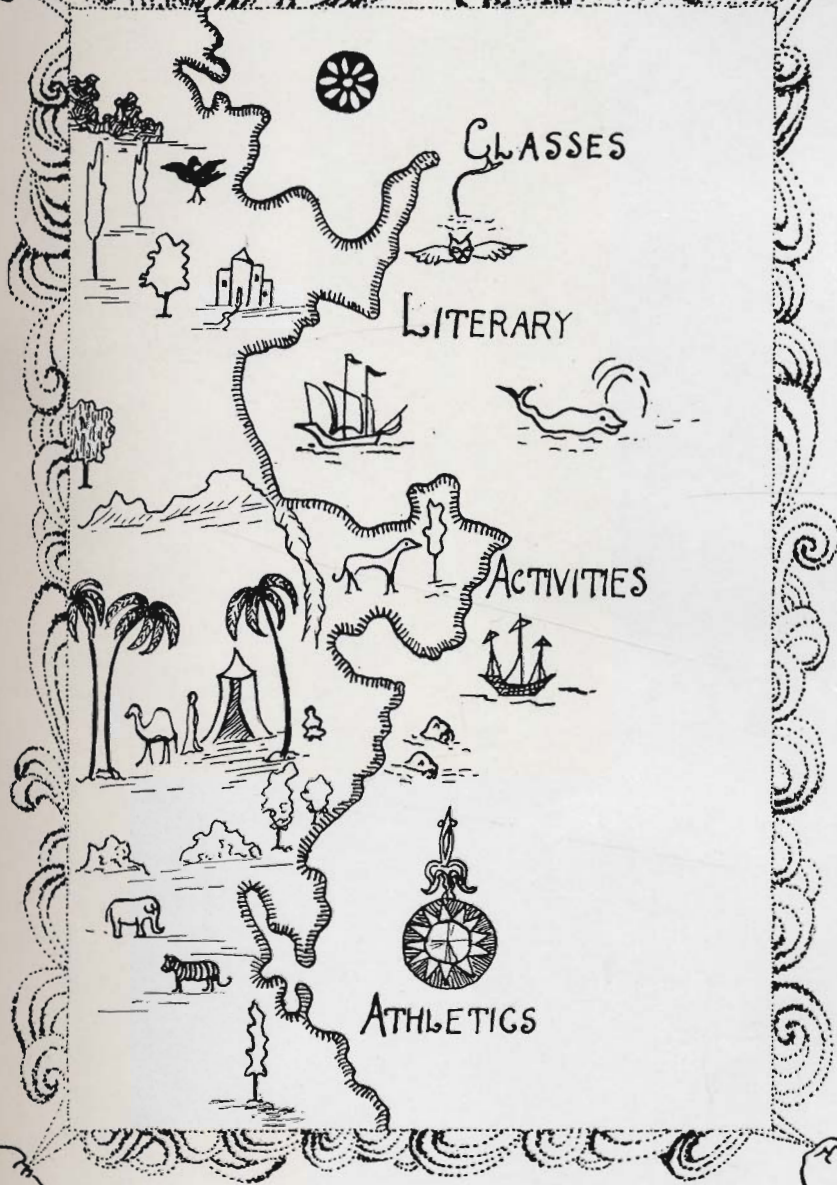
FOREWORD



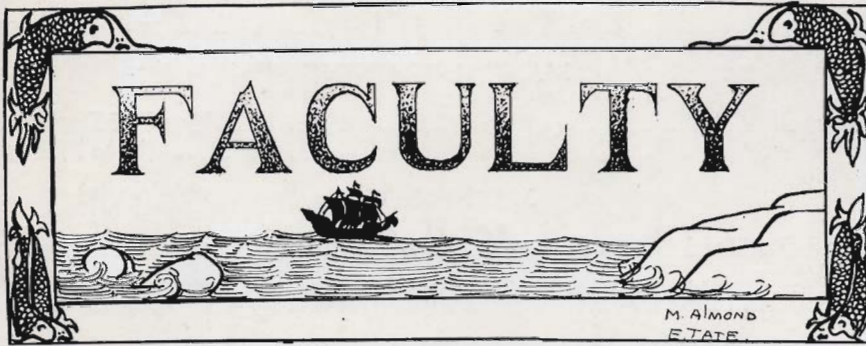
HOW perfect as a symbol of Life is the Ship! A Ship—beauty, mystery, romance, adventure—Life! The matter of supreme moment to us as students is that Life's journey to the Unknown Port be made significant thru Education. On us She confers her choicest possessions in the Virtue, the Science, the Art of the Ages. On our knowledge of these, the Good, the True, the Beautiful, will depend our interpretation and response to the human thoughts, beliefs, opinions, and actions which make up our life experience "on the boundless deep." By these we are sustained and soothed when the storms come and the winds of change are loosed; by these our hopes and faiths are affirmed in that Immortal Goal to which this universal pageant seems moving.



MAP OF CONTENTS







William Inch.....Principal
 Maud Davis.....Vice-Principal

ART

Loyda Barron.....*Loyda Barron*.....Head of Art Department

AMERICANIZATION

Ruth Crittenden.....Head of Americanization Department

COMMERCIAL

M. Neil Babbitt.....*M. Neil Babbitt*.....Head of Commercial Department
 Beulah J. Hurst.....*Beulah J. Hurst*.....Stenography

ENGLISH

Fern Harvey.....Head of English Department
 Ruby Barnbey.....*Ruby Barnbey*.....English
 Magda Benson.....English
 Margaret Cook.....English
 Gladys Pilkington.....English
 Edith Rosenberry.....*Edith Rosenberry*.....English

HOME ECONOMICS

Carrie Erich.....Head of Department
 Margaret Gilcrease.....Dressmaking

LANGUAGE

Ida Rinn.....Spanish
 Katharine Taylor.....Latin



LIBRARY

Jessie Boyd..... Librarian

MANUAL TRAINING

Ira Crose..... Head of Department
Philip Winsor..... Auto Mechanics

MATHEMATICS

Kathleen Stafford *Kathleen Stafford* Advanced Algebra, Trigonometry
Amos Reese..... Geometry
Leota Gilliland..... Algebra, Geometry

MUSIC

Reverda Cross *Reverda Cross*..... Orchestra, Band
Rey Marchant..... Vocal

PHYSICAL EDUCATION

James Conklin *Jim Conklin*..... Head Boys Department
James Hole..... Football, Basketball
Signa Holm *Signa Marie Holm*..... Head Girls Department
Stella Haglund *Stella A. Haglund*..... Physical Education

SCIENCE

Herbert Ballou *F. Herbert Ballou*..... Physics, Biology
Edna Hansen..... Chemistry, General Science
Donald McKay..... General Science

SMITH-HUGHES

Herman Diekman..... Agriculture
Verne Hoffman..... Agriculture

SOCIAL SCIENCE

Luella Hall *Luella Hall*..... Head of Department
Agnes Graham..... History
Grace Haun *Grace Haun*..... History
Louise Rice..... History