



SCHOOL NOTES

ALICE LANGE, '14

THE NEW HIGH SCHOOL

The sixth of October was a glad day—the new high school buildings were opened for occupation. We joyfully gathered up our movables and entered into possession. The spacious halls bewildered us. Every convenience has been furnished for students and teachers.

The auditorium was finally equipped in February, shortly before the Senior play. It is the most complete school auditorium in California, so travelers tell us. The seating capacity is 646. The scenery for the stage, in three sets, painted and installed by Beeman Brothers, is unusually artistic. The work still necessary to put the stage into shape was admirably done by Mr. Bullock and his Manual Training class. With our new Steinway piano we have a complete auditorium.



JUNIOR CLASS

An accommodation looked forward to is the cafeteria, which will be opened next term. Two large dining halls are connected with the cafeteria, and a kitchen which has a fine gas range and every convenience.

The rest rooms for the girls and teachers are delightful, with their dainty curtains, easy chairs, tables, and sofas.

The new feature that delights all is the system of individual lockers. Students are provided with lockers in the main building, in the gymnasium, and in the Science building.

The school is being made still more beautiful by works of art. The statue of the Winged Victory, which was given the school by the Class of '13 now stands at the head of the marble steps at the main entrance. The picture of Lincoln, won last year by the Class of 1914, and the Alice Palmer Memorial, gift of the Class of '12, hang in the study hall.

MANUAL TRAINING COURSE

A four-year Manual Training course is an important addition to the curriculum. The shop consists of benches with full sets of carpenters' tools, an emery wheel, band saw, buzz planer, circular saw, and wood lathe, all of which are electric-motor driven, and a tool room, filled with a generous supply of special tools. The work this term consisted of simple practice exercises, such as measuring and sawing wood, until familiarity with the tools was secured; then simple joint work and the making of small articles of furniture. The boys have set up, wired, and installed the motors themselves. Besides, the shop boys have made and installed the reflectors for the footlights and the border lights and remodeled the dressing rooms in the auditorium, and they have made bulletin boards, cabinet for the drawing room, and tables for the cafeteria.

Hurrah for Mr. Bullock and his shop boys!

COMMERCIAL DEPARTMENT

A two-year Commercial course has been added to the curriculum this year. The fine Underwood and Remington typing machines, the mimeograph, the adding machine, and the modern bank are only a part of the equipment for the Commercial courses. The standard of the work done is far above that of the ordinary business school; for the academic subjects coupled with the business subjects give the student necessary mental breadth. A graduate of this course is fitted for a position without further instruction. Every student that graduated from the Commercial course last year has secured a good position. Miss Hazel Bright, who is book-keeper for the Standard Oil Company, was declared to be one of the most proficient book-keepers they had ever had. The enrollment in the department has increased every year. Fifty-nine students are now taking commercial courses, consisting of two years of book-keeping, typing, stenography, commercial law and penmanship.

Domestic Science Department

Domestic Science is one of the new departments established in the new building. The rooms in the basement are adequately equipped for both the cooking and sewing classes. Each student in the cooking class is furnished with a set that consists of gas burner, aluminum cooking utensils, kitchen knives, measuring cup, egg beater, thermometer, and other necessary articles. Although there is no separate room for the laundry, lessons are being given in the kitchen. The model dining room is connected directly with the kitchen. It is furnished with chairs, a table, a complete set of china dishes, table linen, and silver. At the end of the term each group of four girls will serve a model dinner in the dining room. They are privileged to invite their friends or parents.

The sewing class has done much to make the school more beautiful. Among the numerous things they made for the school are canvas curtains for the gymnasium showers, pretty window curtains for the rest rooms and the model dining room, United States flags for the ventilators, and the linen for the dining

room. Besides the sewing for the school, each girl has made for herself a shirt waist and two dresses.

AGRICULTURAL CLUB

Mr. B. H. Crocheron, Assistant Professor of the Division of Agriculture Extension of the University of California organized the Lodi Boys' Agricultural Club, January 7, 1914. George Chapdelain is President. There is now an enrollment of twenty-five charter members; and meetings at which Mr. Gore acts as club adviser, are held twice each month. Professor V. C. Bryant, Secretary of the University Board of Extension paid the club a visit.

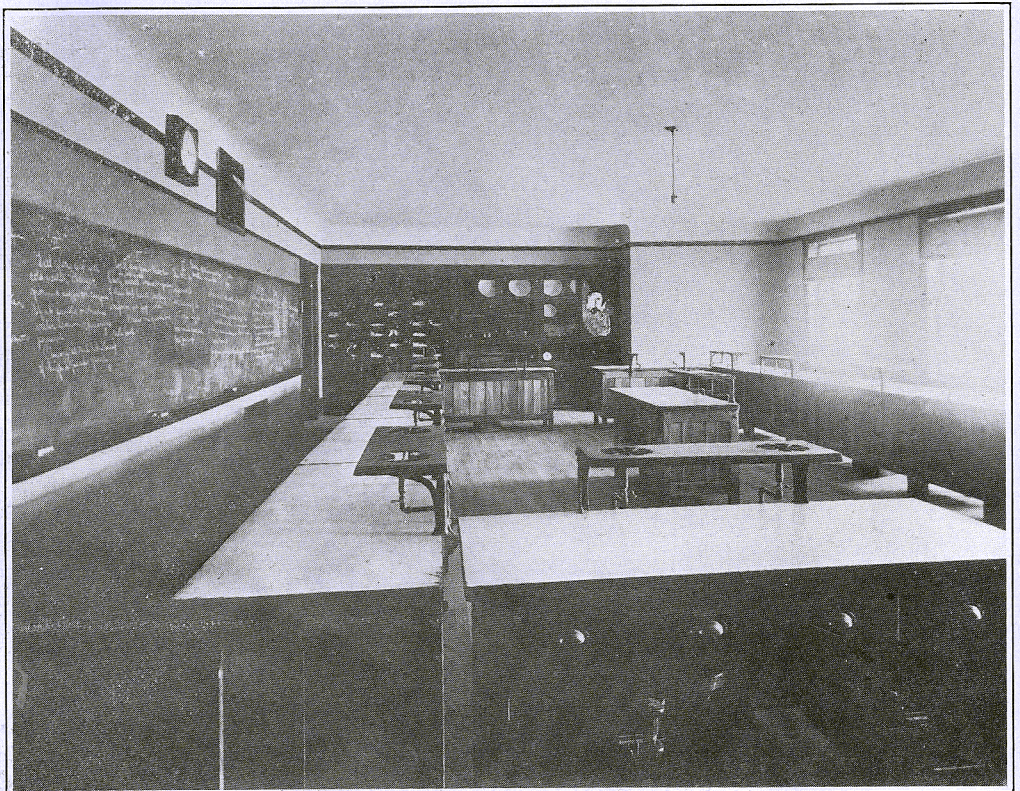
The club members attended the meeting of the farmers' institute held at the Lodi Normal in January.

The club decided to enter the Tomato Contest. The boy winning the contest will be given a trip to Washington, D. C. Arrangements are to be made for stop-overs so that the winner will have the opportunity of seeing the principal cities, agricultural experiment stations, and large commercial farms. Every boy who completes the contest and makes a report thereon may make a visit to the University farm at Davis. Ten members of the club have entered the contest.

FRESHMAN RECEPTION

The first social event of the year was the reception given the Freshmen on Friday night, November 21, in the Gymnasium of the new High School. The Gymnasium was prettily decorated in greenery, chrysanthemums, and Japanese lanterns.

The program consisted mainly of burlesques of the different activities of the school. An eating contest, in which several Freshmen took part, represented the cafeteria. The Witches' Scene from Macbeth was represented by Helen Mundy,



DOMESTIC SCIENCE KITCHEN

Lucile Le Feber and Alice Keast. Two scenes from "The Taming of the Shrew" were given by Mrs. Melber Ayers, Lucile Ryan, Joseph Boyd, James Clausen, and Charles Devine. A mock debate was held on the question, "Resolved, that Freshmen should be ducked on entering the Lodi Union High School." The affirmative was supported by Charles Devine and the negative by Merlyn Manning. The Freshmen, acting as judges, decided unanimously in favor of the negative. A basket ball game, representing athletics, was played between the tallest and the smallest girls. The "Comb Band" and the Yankee Doodle Kitchen represented the music department. Delicious refreshments ended this joyous occasion.

DINNER FOR THE CAST

On Saturday night, February 28, after the second performance of the Senior play, "Trelawney of the Wells," the cast was invited to a tamale dinner in the dining halls of the High School. The feast was furnished by the boys in the cast. The faculty members, and Miss Cooledge, who formerly taught in the High School, were present also. Jolly songs were sung and witty speeches were made by teachers and players. The happy evening ended with the singing of Auld Lang Syne.

THE BANQUET

The Debating League of California, which Lodi joined last fall, held its semi-annual convention in Lodi, April 4. After the business meeting the delegates were given a banquet. A four-course dinner was prepared by the girls of the cooking class, under the supervision of Miss Goddard, and served in the dining halls of the High School. The hall was decorated in lilacs and poppies, representing the school colors, lavender and gold. The girls waited on the sixty guests, who were seated at eight tables.

All enjoyed the after dinner speeches. Mr. Snider, of Lowell, President of the Debating League of California, acted as toastmaster. He expressed the pleas-



COMMERCIAL DEPARTMENT

ure of the delegates in coming to Lodi, and praised us for the spirit we showed in all matters, especially in debating. Following are some of the toasts:

Mr. William Inch, Principal of L. U. H. S.—A Welcome.

Mr. Warren Gum of Lodi—The Value of Debating.

Mr. Wertheimer of Lick—League Extension Work.

Miss Lightbody of Lux—The Value of Debating to the Woman.

Miss Birger, teacher from Lick—A Few Words of Thanks.

Miss Fields, Vice President of L. U. H. S.—Organization of Our Society.

Mr. Baily of Lowell—The Relation of the "Debater" to the Society.

Mr. Baily is the editor of the "Debater," the paper published by the Debating League of California.

CLASS DAY

Owing to the fact that we were all so busy after the moving, the public was not given a full reception to the new high school. The long deferred reception will occur soon. The entire afternoon of Friday, June 12, will be given over to the entertainment of the public. Briefly sketched, the program will be of the following nature: Songs by the school in the assembly hall; "A Roman Wedding with the ceremony and costumery of ancient times; radioptican pictures of Germany and songs by the German classes; Dancing in costumes by the Gymnasium class; Exhibition of the relics and documents of History; Exhibition of the best drawings; Practical problems, illustrative of the work in the Mathematics classes; Display of the work in the Manual Training building; Practical work in Book-keeping and a general exhibition in the cooking and sewing rooms. Light refreshments will be served to the visitors. Athletics, games and contests will end the afternoon. Everybody in the Union districts is invited.

The class night program will be pure fun—vaudeville in character. Admission in the evening is by invitation only, to relatives and special friends of the Seniors.

OBITUARY

It is with profound sadness that we note the death of Bethel McArthur, at her home in Acampo on May 28. Bethel was a member of the class of '15 and much loved by students and teachers. On account of her health she was obliged to quit school last year. She spent the winter in Arizona, and had been at home but a few days when death came. We keep her in loving memory.



MANUAL TRAINING DEPARTMENT SHOP

Organizations

By JOHN J. FINK, '14

In June the Associated Student Body elected officers for 1913-14 as follows:

John J. Fink.....	President
Jennie Graffigna.....	Vice-President
Gladys Garner.....	Secretary
Howard Remick.....	Treasurer
Warren Gum.....	Auditor
Helen Limbaugh.....	Editor Tokay
Ernest Fink.....	Bus. Mgr. Tokay

Neil Shank, Property Manager; Gladys Coblentz and Ian Strange, Financial Secretaries; Millard Coleman, Base Ball Manager; Clarence Wagner, Basket Ball Manager; Florence Folendorf, Basket Ball Manager; Niel Locke, Tennis; Arthur Tindell, Track.

George Chapdelaine was unanimously elected by the Associated Student Body, as Yell Leader for the School Year 1913-14.

The Executive Committee

John J. Fink, Silas March, Gladys Garner, Ernest Fink, Carl Turner, Victor Myers, and Mr. Wm. Inch Faculty Representative.

The Class Organizations

Senior Class Officers: John J. Fink, President; Adelaide Weihe, Vice-President; Helen Mundy, Secretary; Clyde Garner, Treasurer; Silas March, Class Representative.

Junior Class Officers: Charles Devine, President; Marie Fink, Vice-President; Mary McCleary, Secretary; Carl Turner, Class Representative.

Sophomore Class Officers: Morris Brown, President; Ralphine Mills, Vice-President; Amy Boynton, Secretary; Ernest Fink, Class Representative.

Freshman Class Officers: Walter Tindell, President; Urlene Hawkins, Vice-President; Grace McCleary, Secretary; Vesta McMahan, Treasurer; Victor Myers, Class Representative.

Debate Officers: Charles Devine, President; Hazel Neeley, Vice-President; Fern Dawson, Secretary; Miss Hund, Censor.

Agriculture Club Officers: George Chapdelaine, President; Niel Locke, Vice-President; Paul Nesbit, Secretary.

SENIORS PROMINENT IN ACTIVITIES

Mary Bround—Dramatics, '13; Glee Club, '12, '13.

Irene Cary—Vice-President of Class '11; Athletics, '11, '12, '13, '14; Glee Club, '12, '13; Dramatics, '13, '14; Staff, '14.

George Chapdelaine—Dramatics, '13, '14; Athletics, '11, '12, '13, '14; President Agriculture Club, '14; Yell Leader, '14.

Joseph Declusin—Dramatics, '13, '14; Athletics, '11, '12, '13, '14; Debate, '12; Glee Club, '11, '12, '13; Cum Laude, '12.

Frank Edson—Dramatics, '13; Athletics, '13, '14.

John J. Fink—President A. S. B., '13; Dramatics, '13, '14; President Senior Class, '13; Class President and Representative, '11; Business Manager Tokay, '12; Treasurer A. S. B., '12; Treasurer of Class, '12; Glee Club, '11, '12, '13; Staff, '14.

Clyde Garner—Dramatics, '13, '14; Athletics, '11, '12, '13, '14; Treasurer of Class, '14.

Arthur Goodwin—Athletics, '11, '12, '13; Glee Club, '11, '12, '13; Dramatics, '13, '14.

Nellie Griffith—Dramatics, '13.

Jennie Graffigna—Dramatics, '13, '14; Vice-President A. S. B., '14.

Alma Gum—Glee Club, '11, '12, '13; Dramatics, '13.

Warren W. Gum—Athletics, '11, '12, '13, '14; Secretary A. S. B., '12; President of Class, '12; Debate, '12, '13; Dramatics, '12, '13, '14; Vice-President Debating Society, '12; Cum Laude, '12; Auditor A. S. B., '14; Vice-President Debating League of California, '13; Debate Editor Tokay, '13.

Esther Joens—Dramatics, '13; Athletics, '12, '13, '14; Glee Club, '11, '12.

Alice Keast—Glee Club, '13; Dramatics, '14.

Alice Lange—Glee Club, '13; Debate, '12; Cum Laude, '11, '12, '13, '14; Staff, '14; Dramatics, '13; Salutatorian, '14.

Lucile LeFeber—Cum Laude, '11, '12; Debate, '12, '13, '14; Vice-President of Class, '13; Dramatics, '13, '14; Staff, '14.

Helen Limbaugh—Editor Tokay, '14; Staff, '13; Dramatics, '12, '13, '14; Secretary Glee Club, '12; Glee Club, '13; President of Debating Society, '12; Censor Debating Society, '13; Medalist-Debating League of California, '14; Secretary of Class, '11; Cum Laude, '11, '12, '13, '14; Valedictorian, '14.

Richard Lucas—Athletics, '13, '14; Dramatics, '13, '14.

Silas March—Dramatics, '10, '12; Debate, '13; Boys' Financial Secretary, '11; Class Representative, '14.

Helen Mundy—Class Representative, '12; Secretary Debating Society, '12; Debate, '12, '13, '14; Cum Laude, '12; Dramatics, '13, '14; President Debating Society, '13; Class Secretary, '14; Staff, '14.

Marie Murray—Glee Club, '11, '12, '13; President Glee Club, '12; Vice-President of Class, '12; Dramatics, '12, '13; Staff, '14.

Hazel Neely—Vice-President Debating Society, '14; Dramatics, '14; Athletics, '14.

Francis Pool—Glee Club, '11, '12, '13; Debate, '12; Dramatics, '13.

Nellie Posey—Debate, '12; Glee Club, '11, '12, '13; Dramatics, '13.

John Seyer—Dramatics, '13; Glee Club, '13; Debate, '14.

Esther Speikerman—Glee Club, '12, '13; Dramatics, '13.

Grace Stanley—Glee Club, '11, '12, '13; Dramatics, '12, '13; Secretary of Junior Class, '12.

Ian Strange—Cum Laude, '11, '12, '13, '14; Dramatics, '13, '14; Secretary of Class, '12; Financial Secretary, '14; Staff, '14.

Kenneth Udell—Athletics, '13, '14; Cum Laude, '13; Debate, '13; Dramatics, '13, '14; Staff, '14.

Clarence Wagner—Athletics, '12, '13, '14; Basket Ball Manager, '14; Staff, '14.

Bernice Weber—Dramatics, '13; Glee Club, '11, '12, '13.

Mamie Weber—Glee Club, '11, '12, '13; Dramatics, '13.

Adelaide Weihe—Cum Laude, '13; Glee Club, '12; Debate, '14; Dramatics, '13, '14; Vice-President Class, '14; Staff, '14.

Mildred Westlake—Dramatics, '13, '14; Staff, '14.

Elva Wilson—Glee Club, '12, '13, '14; Dramatics, '13.

The Executive Committee, in accordance with the Constitution, granted emblems to the following: (The star indicates that the student has been granted an emblem for the second time in the special activity.)

Debate

* Helen Limbaugh, Helen Mundy, Merlyn Manning, Fern Dawson, and
* Warren Gum.

Boys' Basket Ball

* Cecil Green, * Arthur Tindell, George Chapdelaine, Millard Coleman,
* Clarence Wagner, Joseph Declusin, Neil Shank, and Sherwood Beckman

Girls' Basket Ball

Estella Posey, * Irene Cary, * Florence Folendorf, * Laura Mason, Edith McKindley, Jennie Joens, * Eva Adams, Mae Sorenson, * Esther Joens, and Hazel Neeley.

Track

Clarence Wagner, George Chapdelaine, Carroll Duff, Paul Nesbit, and Woodson Hawes.

Base Ball

Howard Remick, Carroll Duff, Frank Carpenter, Niel Locke, * Lawrence Knudsen, George Lewis, Merritt Jorz, Earl Black, Millard Coleman, Kenneth Udell, * Warren W. Gum, * Clyde Garner.



PROF. BIOLETTI; PRUNES A GRAPE VINE



SOPHOMORE CLASS

Handwritten signature