

Classes





Principal's Message

After four years of attendance at high school what are you taking away with you? Of course, you have some knowledge about a variety of subjects. Most of that is important. If that is all, however, you have missed your opportunities. Unless you have learned in the class room and on the campus that the biggest things are gained through co-operation, you will have that lesson to learn later. Other people count. If you continually try to get all you can for yourself without regard for the rights of others, you may win financial success, though that is doubtful, but you can not secure happiness. Let what you do fit in with the work of others that your combined efforts may secure success for all.

Senior History

WHEN MR. AND MRS. FACULTY reached for the morning paper four years ago, a screaming headline, or, rather, a line of screaming heads, 509 of them, announced the coming of orphans to Stockton High. And now the adopted "Class of '27" has grown and gone. For it was none other than this famous group that Mr. and Mrs. Faculty so kindly took in. The befriended waifs responded to the care and supervised study given them by the elders of the household; nor did they quarrel among themselves, but chose as their leaders Mervin Garibotto, president; Georgia Manuel, vice-president; Clara Catherine Hudson, secretary-treasurer; and Mervyn Littlefield, sergeant at arms.

Mervyn Littlefield and his playmates progressed so favorably that when they had been in their new homes but a year, they showed marked and alarming tendencies to cut their teeth on younger and newly-discovered basket babies. They could find in the polished halls no dirt on which to feed; consequently, they resorted to tiny infants.

Full of unexpected developments in character was the second year of their stay. In the first place, they were just at that stage when impertinence shows itself in "back talk", an art which they upheld to the satisfaction of debate fans and the glory of play-goers. And in their "showing off" before their friends and neighbors they so amused the callers that Mr. and Mrs. Faculty began thinking they had adopted a road show, and so planned great things for the promising generation, each visioned picture framed in footlights. True, the youngsters had "acted up" creditably in "The Charm School".

There is no record of a quarrel among the fast-growing orphans, but it is known that during this second year they suddenly chose Elizabeth Blackmun president, J. Henry Smith, as vice-president, Helen Thornton as secretary-treasurer, and Jack Eagal as sergeant-at-arms. And then they were happy again.

How the time flew! Here was William McCoy running out to play, and there were the other boys with bloody noses. William once stated, on reaching the age of which we write, that there was no Santa Claus, and that, furthermore, he would just like to see Mr. McKay going up a chimney or down one, either, for that matter. After which speech he, Bill Chun, Emery Lally, Van Wolf and some of the other boys went over to pick a quarrel with some Lodi boys.

All this doubting of St. Nicholas took place in the third year of life with the Faculty, a year in which the young men and women began to sense responsibilities and to look to the future. As a result they elected, as usual, class leaders. The choices were president, Norris Rebholtz; vice-president, Helen Yohner; secretary-treasurer, Dorothy Ulrici; sergeant-at-arms, Howard Wells.

While Wayne Hubbard was president, "Three Wise Fools" and "A Full House" immortalized the family name to play-goers, and Dorothy Ulrici brought honor to the house in speaking.

Some morning next September Mr. and Mrs. Faculty will find more astonishing news on the doorstep, more orphans, but none can fill the place of the departed "Class of '27." They have left home.

Wayne Hubbard

Elizabeth Dorn Blackmun

Wayne Hubbard
Academic

Senior class president '27; boys' student control '26-'27; end on football team '26; block "S" in football '26.

Helen Ann Yohner
Academic

Vice president, Junior Class '26; secretary-treasurer Senior Class '27; "The Charm School" '25; "A Modern Day Courtship", "The Romancers" '26; play for Honor Scholarship convention and for Girls' Association convention; girls' rooms committee '26; girls' finance committee '27; adviser vice-president '24; Latin Club '23; Spanish Club '24, '25; senior play committee '27.

Marilouise Adriance
Academic

Spanish Club '25; vice-president adviser '25; Spring Pageant '24.

Maree L. Allen
Academic

Honor Scholarship Society 2 quarters; language department reporter, Guard and Tackle Weekly '26, special writer '26, '27; biography and calendar editor, Annual '27; French plays '26, '27; Spanish play '27; French Club '25-'27; Spanish Club '26-'27; Press Club '25-'27; U. S. History Club '27.

Sefina Atkinson
Commercial

Entered S. H. S. from Modesto '23; Commercial Club.

Austin W. Bean
Vocational

Eva Elizabeth Beisel
Academic

Entered S. H. S. from Berkeley High '25; Honor Scholarship Society one quarter '27; German Club '26; Philopsean Club '27; adviser representative Lodi, '25; Block L in baseball Lodi, '25.

Mary Benschoter
Academic

Entered S. H. S. from Scott High School Toledo, Ohio, '26; Philopsean Club '26-'27; Spanish Club '26-'27.



Elizabeth Dorn Blackmun
Academic

Spanish Club '24-'25; president sophomore class '24-'25; vice-president senior class '27; "Charm School" '25; costume and property manager "Charm School" '25, "A Full House" '27.

Junius Y. Roberts
Academic

Honor Scholarship Society 2 quarters; sergeant-at-arms of senior class '26-'27; student control '27; business manager senior play '27; football team '24-'25; circle "S" in football '25, '26; special block circle "S" '24; adviser representative, sergeant-at-arms '25-'26; Science Club '27.

Lenabelle Allen
Academic

Honor Scholarship Society 2 quarters; Spanish Club '27; French Club '24; Girls' Science Club '24; Student Control '24; president adviser '23; "The Boomerang" '24.

Roy Andrew Anderson
Academic

Attended Oakland High School '23; entered S. H. S. '24; Spanish Club '24, '25; Latin Club '26-'27; Agricultural Club '27.

Virginia Aline Baldwin
Academic

Finance Committee '26; Junior Red Cross '25, '26; adviser representative '26; Latin Club '24, '25; Philopsean Club '25; Commercial Club '26, '27; pageant '24.

Henry L. Beatty
Academic

Latin Play '24; Latin Club '24, '25; Spanish Club '26; U. S. History Club '27; Science Club '27; Hi-Y '27.

Rolyne Joanne Belluomini
Commercial

Commercial play "Martha-by-the-Day" '25; senior play "A Full House" '27; "Pandora's Box" '24; Commercial Club; U. S. History Club.

Ettore Boitano
Academic

French Club '24-'27.

Leo Agtuca Bordey
Academic
Attended Laoag High School
'23-'26; entered S. H. S. '27.

Harold H. Bradley
Commercial
Honor Scholarship Society one
quarter; Commercial Club '25-
'27; "Martha-by-the-Day" '25;
'26; "Seventeen" '26; football team
'26-'27; track, javelin, and shot
teams '27; Block S in football
'26; Circle S in track '27.

Edward Brown
Academic
Manager varsity basketball team
'27; awarded manager block S
'27; adviser representative '23;
Spanish Club '25-'27; Agricul-
ture Club '27; U. S. History
Club '27.

James Bryant
Academic
Latin Club '25; French Club
'27; Adviser representative '27.

James Bryant
Emery F. Cameron
Academic
Attended Turlock High School
'23-'26; entered S. H. S. '26;
Honor Scholarship Society 3
quarters; drama manager-elect
of student body '26-'27; "Bab"
'26; "The Last Silk Hat" '25;
"A Full House" '27; pageants.
"A Night in Judea" '25,
"Messiah" '26; track team '26-
'27; awarded block T for track
'26; Hi-Y '26-'27, secretary-
elect '26; Drama Club '27;
Rifle Club '26; freshman recep-
tion '24; junior-senior banquet
'26; Hi-Y Stunt '26.

Alice L. Carigiet
Academic
Honor Scholarship Society 3
quarters; French Club '24-'27;
Tennis Club '25-'26; French
Club Open House Program '26.

Helene Christensen
Academic
Honor Scholarship Society 5
quarters; Latin Club '25-'27;
Waterman Latin prize; French
Club '25-'27; Science Club '26-
'27; Press Club '26-'27; fresh-
men reception '26; advertising
manager oral expression play
'26; joke editor Guard and
Tackle Weekly '26-'27; adviser
secretary '25.

Jessie Marguerite Clark
Academic
Attended Hilmar High '24-'26;
entered S. H. S. '26; center on
basketball '24-'26 at H. H. S.;
block H in basketball '26;
adviser secretary-treasurer '25;
Spanish pageant '25; freshman
reception '25, '26; G. A. en-
tertainment committee; won pin
in typing '26; scholarship in
typing proficiency at Club in
San Francisco; Spanish Club
'25; Girls' Pep Club '26.



Ardis Boulware

Ardis Boulware
Academic
French Club '23-'27; president
of adviser '23; "A Full House"
'27.

Oscar Henry Breitenbucher
Academic
Adviser Representative '25;
Band and Orchestra '24-'27.

Eloise Brown
Academic
Entered S. H. S. from Lodi
'25; "Love Pirates of Hawaii",
Lodi '25; at S. H. S. secretary
of adviser, '25; Spanish Club
'25, '26.

Teofilo Abella Calpo
Academic
Attended Vigan High School
'19-'23; entered S. H. S. '26;
Spanish Club '26-'27.

Edith I. Canote
Commercial
Attended Norfolk High School,
Nebraska '23-'25; awarded
block N in girls' athletics '24;
business manager of "No-Hi-
So" '24-'25; won pins in typ-
ing '24-'25; May Festival '25;
"N" Club '23-'25; G. A. A.
'23-'25; Home Economics Club
'24-'25; entered S. H. S. '26;
Commercial Club '26-'27.

Jane Elizabeth Carlson
Commercial
Commercial Club '25-'27; ad-
viser president '26-'27; chair-
man girls' rooms committee '27;
executive committee of Com-
mercial Club '27.

William Chun
Academic
Entered S. H. S. from Lowell
High School, San Francisco,
'24; Hi-Y Club '26, '27; var-
sity basketball team '26, '27;
Block S, football '25; Circle S,
basketball '27.

Nellie Cline
Commercial
Commercial Club '26-'27

Herbert W. Clough
Academic
Honor Scholarship Society 3
quarters, awarded circle S '23
for football; "A Full House"
'27; "Nicholas King"; business
manager; "The Charm School"
'25; Science Club '27; Circle S
Society '24; band '23-'27.

Frank Cook
Academic

Ella Andrea Dahl
Academic
Art editor of Guard and Tackle
Annual '27; girls' rooms com-
mittee '26-'27; Spanish Club
'26.

Donald Davis
Academic
French Club '23-'27.

Florence Demartini
Commercial
Commercial Club '25-'27.

Marian Louise Dodge
Academic
Chairman Junior Red Cross '26-
'27; "The Charm School" '25;
Welfare Committee '25-'26; ad-
viser secretary '27; Latin Club
'23, '24; French Club '25, '26;
Social Service Club '27.

Gerald A. Donaldson
Academic
Entered S. H. S. from Tamal-
pais High School '24.

Pauline Gloria Dunn
Academic
"The Charm School" '25;
Opera "Red Mill" '23; Asso-
ciated Girls' entertainments '25;
Spanish Club '25.



George D. Cogarno
Commercial
Honor Scholarship Society 6
quarters; Commercial Club '25-
'27; Italian Club '25, '26;
scenery and assistant manager
commercial plays '25-'27.

Ysabel Stewart Cureton
Academic
Freshman reception '25, '26;
adviser representative '25; Latin
Club '24-'27; French '26, '27.

Ralph W. Dale Jr.
Academic
French Club '25; Latin '23;
Hi-Y '23, '24; B football team
'25, '26; Circle S in football
'25, '26.

Doris Deaper
Academic
Honor Scholarship Society 10
quarters; committee for state
convention, '25; Latin Club
'23-'27, Latin Plays '24, '26;
Waterman Latin Prize '24;
French Club '25-'27; Spanish
Club '26, '27; Philopsean
Club '24, '25; Press Club '27;
Social Service Club '24, '25;
literary editor "Guard and
Tackle Annual" '27; Open
House Night '26.

Caroline E. Diffenderfer
Academic
Honor Scholarship Society one
quarter; Latin Club '25-'27, en-
tertainments '25, '26; Literary
Club '26, '27, vice-president
'26; Girls' Science Club '26;
Social Service Club '27; Girls'
Athletic Association '26, '27;
"The Charm School" '25;
Spring Pageant '24, '25; fresh-
men reception '26.

Nadine Alda Domenici
Commercial
Commercial Club '26, '27;
"Through The Green Door,"
'24.

George Wesley Dunlap
Academic
Honor Scholarship Society 12
quarters, sergeant-at-arms '26,
president '27; Boys' Science
Club '26-'27, president '27,
vice-president '26, secretary-
treasurer '26; Hi-Y '26-'27,
vice-president '27; U. S. His-
tory Club '27; band and or-
chestra '24-'27; tennis team '27;
adviser representative '27.

Grace Durand
Academic
Honor Scholarship Society 2
quarters; Latin Club '25, Wa-
terman Latin prize '25.

Jack Eagal Jr.

Jack Eagal Jr.

Academic

Latin Club '23-'27; yell leader '25; Circle S Club '24; yell leader student body '26; Student Control '25, '26; adviser representative '24; sergeant-at-arms sophomore class '25; Circle S in football '25; tennis '24; B football team '25; circulation manager Guard and Tackle Weekly '23.

Julian Ehresman

Academic

Boys' Science Club '26; Hi-Y '26, '27.

Karin Farwell

Academic

Attended Jefferson Jr. High in Long Beach '24; entered S. H. S. '25; Honor Scholarship Society 2 quarters; Finance Committee '26, '27; Associated Girls' Committee '26, '27; French Club '26.

Janice French

Academic

Latin Club '23; French Club '25; Social Service Club; '27; Philopsean Club '27; G. A. A. '27, Jinks '26.

Joe Friedman

Academic

Entered S. H. S. from Lowell High School, San Francisco '23.

Nellie D. Gaskell

Commercial

Girls' basketball team '24-'26; adviser representative '25; athletics and personal efficiency committee '24-'27; pageant '24; Commercial Club '26, '27.

Belle J. George

Commercial

Commercial Club '25-'27; Science Club '27.

Ila Marie Grant

Commercial

Honor Scholarship Society 4 quarters; Commercial Club '25-'27; Student Control '26, '27; Adviser Red Cross Representative '26.



Elvera Ehlers

Academic

Attended Shiner High School, Texas '23-'25; entered S. H. S. '26; secretary-treasurer, sophomore class '24; president junior class '25, all at Shiner High.

Marian A. Eldred

Academic

Girls' basketball team '24; stroke-leader, rowing team '25-'26; Spanish Club '25-'26; Orchestra '23-'27.

Milton H. Foster

Commercial

Honor Scholarship Society one quarter; Commercial Club '26, '27, president '27; Agriculture Club '26, '27, board of directors '27; History Club '27; commercial play '27; adviser representative '24-'26, president '24-'26.

Lotta Maurthea Friedberger

Academic

French Club '24-'27; freshman reception; Girls' Pageant; Girls' Fashion Show; Latin Club play.

La Verne M. Garrow

Commercial

Absent Girls' Committee '27; Special assistant to Girls' Student Control '27; adviser representative '24; adviser secretary '27; Commercial Club '26-'27.

Ralph Gates Jr.

Academic

Honor Scholarship Society 2 quarters; U. S. History Club '27; French Club '25-'27, sergeant-at-arms '26, '27.

Leila K. Goad

Academic

Honor Scholarship Society 2 quarters; adviser president '25; athletic and personal efficiency committee '25; French Club '24-'27.

Alice Guntert

Academic

Entered S. H. S. from Girls' High, San Francisco, '26; Latin Club '26-'27; Literary Club '26-'27; Science Club '27; at Hillsdale won Diamond H in basketball; freshmen class play '24.

Gladys Drucell Gunther

Academic
Honor Scholarship Society 3
quarters; chairman of Social
Service Committee '26, '27;
Latin Club '24; Philopsean
Club '27; Press Club '26; Hon-
orable mention on poster in
Art.

Dorothy Hammond

Academic
Honor Scholarship Society 10
quarters; awarded two scholar-
ship certificates; reception com-
mittee for Girls' League Con-
vention '25; adviser president
'23-'27; Spanish Club '24-'27;
Freshman receptions '24, '25;
finance committee '26-'27; en-
tertainment committee '25.

*Dottie
Hammond*

Mary Garvin Hammond

Academic
Honor scholarship Society 7
quarters; Girls' Student Control
'26; freshman reception '25-'27;
French Club '26, '27; president
'27; Latin Club '24, '25; Press
Club '26; Guard and Tackle
Annual staff '27; freshman-
sophomore oratorical contest
'24; Publicity committee for
'A Full House'; A. G. enter-
tainment committee '26-'27;
Committees for Scholarship con-
vention '26; reception commit-
tee of Girls' Association con-
vention; adviser vice-president
'25-'26.

Genevieve Harris

Commercial
Adviser vice-president '23;
Commercial Club '25-'27.

Ardis Ann Haskin

Academic
Spanish Club '25, '26; Girls'
Glee '25; joke editor Guard
and Tackle '27; "The Charm
School" '24; Open House Night
'25.

George L. Hendricks

Academic
Latin Club '23; Spanish Club
'26, '27; Hi-Y '26, '27; ad-
viser representative '24; Tacky
Day Stunts.

Hartwel Russell Hillier

Academic
Attended Garey Junior High
School '22-'23; student body
president '22-'23; end on foot-
ball team '22; block "G" in
football '22; attended Pomona
and Anaheim High Schools '23;
entered S. H. S. '24; assistant
manager of Guard and Tackle
Annual '25.

Avrom Horwitz

Academic
Honor Scholarship Society one
quarter; yell leader '26.



Virginia Perley Hall

Academic
Vice-president Associated Girls
'26-'27; "The Charm School"
'25; "A Full House" '27; re-
porter for mathematics and sci-
ence departments, Guard and
Tackle Weekly '26; French
Club '25-'27, secretary '26-'27;
Press Club '25-'26; freshman
reception '26; committee for
Girls' League convention '25.

George Brown Hammond

Academic
Honor scholarship Society 4
quarters; Spanish Club '25-'27;
Science Club, '27, vice-presi-
dent '27; adviser representative,
'24-'27.

Ramona Rita Hara

Commercial
Commercial Club '26-'27; Span-
ish Club '26; pin won in try-
ing '26; Social Service '26.

Rosie Hasegawa

Commercial
Adviser vice-president '24; sec-
retary-treasurer '25; Commer-
cial Club '25-'27; Music Week
Choral.

James C. Hazlett

Academic
Honor Scholarship Society 3
quarters; Latin Club '23, '24,
Waterman Latin Prize '23;
Chess and Checker Club '23,
'24; German play '26.

Wallace E. Higby

Academic
Honor Scholarship Society one
quarter; mile and half-mile runs
on track team '24-'26; track
captain '26; half-back and quar-
terback on football team '24-
'26; awarded one circle "S"
and 5 block "S's" in football.

Haruo Horita

Vocational
Honor Scholarship Society 4
quarters; Machine Shop Club
'25-'27, Vice-president '27; ad-
viser representative '27.

Jeanne Howell

Academic
Attended Manteca Union High
School '23-'26; attended Berke-
ley High '26; entered S. H. S.
September '26; Honor Schol-
arship Society 12 quarters; vice-
president of Associated Girls
'26; musical entertainments '24-
'26; operetta '24; Lyceum '24;
scholarship committee '24-'26;
student body entertainment com-
mittee '25-'26.

Paul Thayer Hubbard

Academic

Entered S. H. S. from Yreka '24; Latin Club '24-'27, Latin play '26; winning Sophomore debate team '25.

Dwight Humphreys

Academic

Honor Scholarship Society 8 quarters, scholarship certificate '26; Editor Guard and Tackle Weekly '26-'27; Editor Annual '27; Weekly news editor '26; Annual oratory editor '26; executive committee '27; Boys' Student Control '27; tennis team '24-'26, captain '25; circle S in tennis '25, '26; composed words and music to "Hail, Blue and White" '26, "Fighting Tarzans" '27; Press Club '26, '27, vice-president '25, secretary '26, '27; Literary Club '26, '27, vice-president '27; Hi-Y '25-'27, treasurer '26; Spanish Club '24-'27 stage and scenery manager of "The Charm School" '25; accompanist, Boys' Glee; Quartet '26, '27; Brass Quartet '27, Chorus '26.

Evelyn Raber Johns

Commercial

Commercial Club '26; Philo-physcan Club; '27; Pageant '24; Music Week Choral '26; won pin in typing '26; adviser representative '25.

Ruth Margaret Jory

Academic

French Club '24-'26; Latin Club '26-'27; adviser representative '25-'26; sophomore debate '25.

Helena L. Jurgensen

Academic

Girls' Glee Club '23, '24; Philo-physcan '26-'27; Social Service '27; advisory board Girls' Association '26-'27.

Alta F. Kaneda

Academic

French Club '24-'26; Orchestis Club '24; German Club '26; Pageant '24.

Charlotte Kelly

Academic

Spanish Club '25-'27; Press Club '27; Science Club '26-'27; president freshmen class '24-'25; adviser representative '24-'25.

Fanny Knapp

Academic

Spanish Club '25, '26; Pan-Pacific Club '27; Philo-physcan Club '25.



Virginia Marie Humbert

Academic

Philo-physcan Club '26, '27; French Club, '24; Latin Club, '26, '27; Girls' Athletic Association; "The Charm School" '24.

George M. Itaya

Academic

Spanish Club '26-'27.

Joseph P. Jones

Vocational

Honor Scholarship Society 3 quarters; Machine Shop, Safety Club '24-'27, chairman '24-'25, foreman '24-'26; adviser representative '24-'26.

Beard Jory

Walter U. Jory

Academic

Entered S. H. S. from Linden High '26; Linden basket ball team '23, '25; Block L in basket ball '24, '25; Linden debate '25.

Harold H. Kanagawa

Academic

Honor Scholarship Society one-quarter; Spanish Club '24-'27; German Club '25-'26.

Emmett P. Kearns

Commercial

Originator of U. S. History Club '27, president '27; Assistant stage and scenery manager of Commercial Play '27; Commercial Club '25-'27; Agriculture Club '25-'27; Spanish Club '26.

Norman Albert Kessler

Academic

Press Club '27; Agriculture Club '26-'27; adviser representative '25.

Paul H. Knowles

Academic

Honor Scholarship Society one quarter; Boys' Science Club '26-'27; Latin Club '23-'27; U. S. History Club '27.

William H. Krinke
Academic



Bettie Kroeck
Academic

Entered S. H. S. from College Park Academy '24; Latin Club '24; Spanish Club '27; German Club '26, '27, play '27; freshman reception '26; Spring Pageant '25.

Anne Lee La Baume
Academic
Freshman reception committee '26; adviser representative '24; Commercial Club '26, '27.



Robert H. Lacey
Academic

Attended Polytechnic High in San Francisco '25; entered S. H. S. '26; reporter on Guard and Tackle Weekly '27; Spanish and Press Clubs.

Lillian Ellen Lazarus
Academic
Entered S. H. S. from Manteca High '26.



Elna Lipscomb
Academic

Freshman reception '24-'26; girls' entertainment committee '25; Latin Club '23-'25.

Lois Little
Academic
Honor Scholarship Society 8 quarters; Latin Club '24-'27, Latin play, '26, Waterman Latin prizes '24, '25, '26; Spanish Club '27; German Club '26-'27; Open House Night '26.



Marion Virginia Littlefield
Academic

Honor Scholarship Society 4 quarters, president '26, '27; first vice-president of student body '26-'27; Junior representative '25-'26; executive committee '25-'27; Girls' Student Control '26, '27, chairman '27; "The Charm School" '25; "A Full House" '27; sophomore debate '25; French Club '23-'27, vice-president '24; Girls' Glee Club '24, '25; executive committee of Honor Scholarship Society '26, '27; housing committee for Honor Scholarship and Girls' Association conventions '25, '26; social service committee '25, '26; freshman reception '25, '26; pageant '25; adviser representative '24, secretary '25.

Stanley V. Lockey
Academic
Agriculture Club '26, '27; football team '27; Circle S in football '25-'27.



Juan Ancheta Lorenzo
Academic

Honor Scholarship Society 2 quarters; Debating Club '26; Spanish Club '26-'27; U. S. History Club '27.

Thelma Catherine Losekann
Academic
Honor Scholarship Society one quarter; opera "The Red Mill" '24; "The Charm School" '25; Freshman reception '26; social service committee '26; finance committee '26, '27; French Club '25.



Dorothy Dean McBride
Academic

Spanish Club '26, '27; Press Club '27; U. S. History Club '27; Philopsean Club '25-'27; adviser representative '23.

George Mills McCan
Academic
Science Club '26, '27, secretary '27, sergeant-at-arms '26; Spanish Club '26, '27; Latin Club '24, '25; "The Full House" '27; adviser representative '23, '24.



Walter McConnell
Academic

Entered S. H. S. '23; attended Manteca High School '24-'25; re-entered S. H. S. '25; Manteca gym team '24; Dramatic Club '23; "Lyceum"—operetta '24.

Jack McCormick
Academic
"The Goose Hangs High" '26; Agriculture Club '26; Spanish Club '24.



William McCoy
Executive committee '26; student control '26; second football team '24; varsity football team '25-'27; varsity basketball team '25-'27; awarded block "S's" in football and basketball '25, '26.

*William
McCoy
M*

Constance McMahon

Academic

Entered S. H. S. from St. Agnes High '26; Philophysean Club '27; Social Welfare Club '27; at St. Agnes: T. Y. M. Club '24-'26; Shorthand Club '24-'26; Science Club '24, treasurer '24; "Penrod"; freshmen reception '26.

Talcott Mather

Academic

Honor Scholarship Society 5 quarters; Spanish Club '25-'27; Radio Club '27, vice-president '27; Boys' Science Club '26, '27; "Hi-Y" Club '25-'27, president '25; B football team '26-'27; Circle S in football '26-'27; "A Full House" '27.

Leslie Matthies

Academic

Attended Tracy High '24-'26; entered S. H. S. '26; literary editor, Guard and Tackle Weekly '27; Commercial Club '26-'27; Press Club '26-'27; Spanish Club '26-'27.

Joe Merchasin

Academic

German Club '26, play, '26; Science Club '27; Latin Club '24, '25; "A Full House" '27.

George Metaxas

Academic

Entered S. H. S. from John Sweet High, Crockett '26; at Crockett, president sophomore class '25; president junior class '26; captain basketball varsity '26 Block J. S. '25, '26, '27; at S. H. S. member track team; won Kuechler trophy in inter-class meet.

Claire Moore

Academic

"The Charm School" '25; pageants '24, '25; Philophysean Club '27; Spanish Club '25; Orchesis Club '25.

Georgia Fern Morris

Academic

Latin Club '25-'26.

Junichi J. Nakashima

Vocational



Georgie Ray Manuel

Academic

Honor Scholarship Society 6 quarters; Latin Club '24-'25; Spanish Club '25-'27; Social Service Club '27; Press Club '26; Girls' Student Control '27; adviser representative '24-'25; vice-president '24.

Michael M. Matsushima

Academic

Entered St. Anthony's Junior High in Hawaii '23, entered S. H. S. '25; Honor Scholarship Society 2 quarters; swimming team '26-'27; French Club '26.

Maurice D. May

Academic

Attended Berkeley High '23, '24; entered S. H. S. '25; Honor Scholarship Society one quarter; circle "S" in football '25.

Helen Merz

Academic

"The Charm School" '25; chairman, absent girls' committee '26, '27; Latin Club '25-'27; Italian Club '26, '27; Social Service Club '27.

Alma Lillian Michelotti

Academic

Honor Scholarship Society one quarter; Social Service Club '27; won pin in typing '26.

Loleta Moorman

Commercial

Entered S. H. S. from Escalon '25; Debating Club '24; sophomore debate '24.

Irene Margaret Morris

Academic

Honor Scholarship Society 2 quarters; three Latin plays '24-'25; open house night '25.

Letha Nelson

Commercial

Girls' volley ball senior team '27; adviser representative '26-'27; Commercial Club '26-'27; Girls' Athletic Association '27.

William Nemie
Academic
Attended Manteca High '23; entered S. H. S. '24; Honor Scholarship Society 6 quarters; 2 Latin prizes '24, '25; Latin Club '25, '26.

Louise K. Noack
Academic
Art editor of Guard and Tackle Annual '27; first prize annual essay '26; chairman, scrapbook committee '27; wrote skit for freshman reception '26; Spanish Club '24-'26.

Joe O'Brien
Academic
Swimming team '24; Spanish Club '25-'27; U. S. History Club '27; Spanish play '25.

John Henry Ott
Vocational
President Safety Club '25-'26; football team '25, '26; Block S in football '25, '26; Circle S '24; pressman Guard and Tackle Weekly '25, '26.

Carl L. Page
Academic
Honor Scholarship Society 4 quarters; Senior representative on executive committee '27; agriculture club '26-'27; treasurer '26; Spanish Club '26-'27; sergeant-at-arms '27; National Forensic League '26-'27; president '27; Hi-Y '26-'27; secretary '27; Latin Club '24-'26; Press Club '26; debated in 6 Varsity debates '26-'27; Guard and Tackle Weekly staff '26; track team '27.

Rebecca Passovoy
Academic
Guard and Tackle weekly staff '26-'27; pageant '23, '24; publicity committee of A. G. '26; Spanish Club '24-'27; Press Club '25-'27.

Ralph Pendleton
Academic
Honorary mention in essay on "Better Moving Pictures" '24; adviser representative '23, '24; adviser treasurer '23; Science Club '24; Spanish Club '23; Hi-Y Club '25.

Charles S. Peterson
Academic
Attended Middletown High '23-'26; entered S. H. S. '26; basketball team '24; baseball team '24; awarded 2 block M's and one English M in basketball and baseball in '24-'25; Jr. Farm Bureau Club; sergeant-at-arms '25-'26; school plays in '24-'25; school fair '26; freshman initiation '25.

Margaret Louise Neuhaus
Academic
Spanish Club '25-'27; Girls' Glee Club '25; open house night '24, '25.

Gertrude Mae O'Brien
Commercial
Commercial Club '25-'27; Philophysean Club '27; Circle Old English S '25; president adviser '26, representative '25; head usher pageant '24.

Erwin Edward Olney
Vocational
Honor Scholarship Society 7 quarters.

K. Elsom Paddock
Academic
Manager of Guard and Tackle Weekly '26-'27, Annual '27; Hi-Y '26, '27, secretary '26, vice-president '27; Science Club '27; Boys' Glee Club '26; Latin Club '23, '24; publicity manager, "The Charm School" '25; Hi-Y play '26.

Leatha Parker
Academic
Entered S. H. S. from Faston High, Montana '26.

Glenn H. Pearson
Academic
Hi-Y Club '25-'26; Spanish Club '26-'27; adviser representative '22; assistant advertising manager commercial play '23.

Mary Louise Peters
Academic
Entered S. H. S. from St. Agnes High '26; French Club '26, '27; Student Control '26, '27; freshmen reception '26.

Camille Jeanette Pike
Commercial
Commercial Club '25-'27, president '25-'26; president Girls' Athletic Association '25, '26; president Girls' Association '26, '27; president adviser '23; Student Control '25, '26; freshman reception '25, '26; music week program '26; first prize Annual snapshots '26; won pin in typing '26.



Glenn H. Pearson
Mary Louise Peters
Camille

Charles Platek
 Vocational
 Honor Scholarship Society 6
 quarters; varsity football team
 '26; Circle S in football '26.

Holbrook N. Pray
 Academic
 French Club '24, '25.

Norris Rebholtz
 Academic
 Honor Scholarship Society 4
 quarters; Latin Club '24-'25;
 Spanish Club '25-'27; History
 Club '27; Science Club '26-
 '27; president Student Body
 '26-'27 president sophomore
 class '25; president junior class
 '26; adviser representative '24-
 '25; student control '26-'27;
 executive committee '26-'27;
 drama class plays '24; "Charm
 School" '25; "The Romancers"
 '25; "Modern Day Courtship"
 '26; "Full House" '27; fresh-
 men-sophomore oratorical con-
 test '24.

Georgina Reid
 Academic
 Honor Scholarship Society 2
 quarters; French Club '24; Phi-
 lophysean Club '26, '27; Or-
 chestra '24-'26; all-state school
 orchestra '27.

Darrell De La Vergne Reyner
 Academic
 Entered S. H. S. '21; attended
 Manteca High School '22-'24;
 re-entered S. H. S. '25.

Henry Albert Reynolds
 Academic

Mildred Riley
 Academic
 Entered S. H. S. '26 from
 Oakdale High; Philophysean
 Club '27; Social Service Club
 '27.

Walter James Robertson
 Academic
 Honor Scholarship Society 5
 quarters; Radio Club '27; presi-
 dent '27; Spanish Club '25;
 National Forensic League; hon-
 orable mention in freshman-
 sophomore contest '23; won
 sophomore debate '24; varsity
 debates '25-'27; ring in debat-
 ing.



Elwood W. Potter
 Academic
 French Club '24; band '24-'27.

Ann Virginia Radovan
 Commercial
 Commercial Club '26, '27.

Wanoma E. Redding
 Commercial
 Entered S. H. S. '23; attended
 St. Agnes High '24, '25; re-
 entered S. H. S. '26; Commer-
 cial Club '26-'27.

Luther E. Renfro
 Academic
 Orchestra; Brass Quartet.

Dorothy Reynolds
 Academic
 "The Charm School" '25;
 pageant '23, '24; freshman re-
 ception '24, '25; open house
 program '23; entertainments,
 '24; A. G. A. monogram '23;
 Spanish Club '23-'26; Orchesis
 Club '25; Welfare Club '27;
 Philophysean Club '24; Adviser
 president '23, vice-president
 '27; public speaking '27.

Rose Mabel Reynolds
 Academic
 Spanish Club '24-'27; Literary
 Club '26; Philophysean Club
 '26-'27; Social Service Club
 '27.

Dolores Rimassa
 Academic
 Honor Scholarship Society 2
 quarters; numeral in volley ball
 '27; pageant '24; Latin Club
 '24-'27; Italian Club '26, '27;
 Philophysean Club '27; Social
 Service Club '27.

Mary Robustelli
 Academic
 Honor Scholarship Society 9
 quarters; senior volley ball
 team; captain '27; senior bas-
 ketball team, center '26; nu-
 meral in volley ball '27; girls'
 rooms committee '26-'27; Italian
 Club '26-'27; Spanish Club '24-
 '27; Philophysean Club '26-'27.

John Wallace Ross
Academic
Attended Alameda High School '23-'26; entered S. H. S. '26; "The Pirates of Penzance", opera '26; drama plays '27; Latin Club entertainments '24; R. O. T. C. Club '24-'26; Glee Club '23-'25; Latin Club '24-'27.

Bernice Grace Sanborn
Academic
Philopsean Club '25-'27; History Club '27; Commercial Club '26; freshmen reception '25, '26; Girls' Pageant '25; drama class play '27.

Lloyd F. Scanlan
Academic
Adviser representative '25, '26.

Marjorie Scott
Academic
Honor Scholarship Society 11 quarters, secretary-treasurer '27; Spanish Club '24-'27; Latin Club '25; Waterman Latin Prize '25 Social Service Club '27, president '27; Press Club '27; Philopsean Club '27; adviser secretary-treasurer '24-'27; secretary-treasurer Associated Girls' '27; "Passing of the Third Floor Back" '26; Pageant '25.

Floyd M. Sherfey
Academic
Attended English Collegiate Private School '24; entered S. H. S. '26; track team, shot put, '27; Hi-Y '26-'27; Press Club '27.

Lamar Sidener
Commercial
Spanish Club '25-'27; Commercial Club '25; adviser representative '24-'25; second vice-president student body '26-'27; executive committee '26-'27; Boys' Student Control '26-'27; chairman '27; track team '25-'27; football '26; captain basket ball team '26-'27; 2 Circle S's in track '27; Circle S in football '27; 2 Circle S's in basket ball '24, '26; Block S in basket ball '27.

J. Henry Smith Jr.
Academic
Attended Tracy High School '23; entered S. H. S. '24; Honor Scholarship Society 14 quarters; assistant manager, Guard and Tackle Weekly '25, '26, manager '27; assistant manager of Annual '26; Jr. Hi-Y '25-'26, president '25; Hi-Y '26-'27, president '26; Latin Club '24-'26; secretary '25-'26; Radio Club '27; "A Full House" '27; honorable mention freshman-sophomore oratorical contest '24; Latin Plays '24, '26; Hi-Y plays '26, '27; honorable mention in Annual short story contest '26.

Harriett Stanaway
Academic
Philopsean Club '26-'27; Spanish Club '26; French Club '25; drama '26.

Albert Safine
Academic
Honor Scholarship Society 2 quarters; first prize of Waterman Latin prizes; Latin play '25; assistant exchange editor of Guard and Tackle Weekly '26; Latin Club '23-'24; Press Club '26; Spanish Club '26-'27; Hi-Y '27.

Beatrice Marjorie Satterlee
Academic
Honor Scholarship Society 3 quarters; "The Charm School" '25; Pageants '24, '25; freshman receptions '24, '25; 2 Spanish plays '26; drama play '27; Spanish Club '25-'27.

Howard C. Schroder
Academic
Attended Alameda High School '24; entered S. H. S. '25; exchange editor, Guard and Tackle Weekly '27; Agriculture Club '26, '27; Spanish Club '26, '27; Press Club '26, '27; U. S. History Club '27.

Donald H. Sherfey
Academic
Entered S. H. S. from English Collegiate Private School '27.

Alan Shirek
Academic

Harriet Smith
Academic
Latin Club '25-'27; French Club '23-'27; Girls' Glee '23, '24; History Club '27; secretary-treasurer student body '26, '27; executive committee '26, '27; adviser representative '24, '26; "A Full House" '27; business manager oral expression play '27; freshmen receptions '25, '26, '27.

Lovett R. Smith
Academic
Student body song leader '26-'27; assistant manager Guard and Tackle Weekly '25, annual '26; All-State High School Orchestra '27; played for school parties; French Club '24-'26; Chess-Checker Club '24; Boys' Glee Club '26-'27; band and orchestra '25-'27.

John C. Susich
Commercial
Commercial Club '26, '27, Usher Manager of Commercial play '27.



Margreth Sutter

Commercial

Honor Scholarship Society 8 quarters; awarded pins in typing '26; executive committee of Commercial Club '27; adviser president '25; scrapbook committee '27; Commercial Club '27; attended Patterson High in '26.

Henry E. Thurston

Academic

Honor Scholarship Society one quarter; varsity football team '26; block S and circle S in football '25-'26; Hi-Y '26-'27; Latin Club '24; Spanish Club '25; adviser representative '27.

Thelma Tretheway

Academic

Art editor of Guard and Tackle Annual '26; freshman reception '27; scrapbook committee '25, '26; Spanish Club entertainments '25-'26; Spanish Club '24-'27; Philopyscean Club '26; Social Service Club '27.

Helen Turner

Academic

Honor Scholarship Society 10 quarters, treasurer, '26; pageant '23, '24; German program '26 French Club '23, '24; Philopyscean Club '26-'27; Literary Club '26; Social Welfare Club '27; German Club '26, '27.

Charles Usui

Academic

Honor Scholarship Society one quarter; Spanish Club '24-'27.

Alceath Van De Venter

Academic

Entered Escondido Union High '23-'24; attended Quincy High '25-'26; entered S. H. S. '26; Honor Scholarship Society 3 quarters; junior class president '25-'26; freshman play '24; junior play '26; sophomore debating team '24-'25; freshman reception committee '25; Girl Reserves '24-'25; Chairman of social committee '24-'25; basketball team '25-'26; letter in basketball '25-'26.

Frank Wallace

Academic

Fern Warren

Academic

Entered S. H. S. from Seligman, Arizona, in '24; Latin Club '24-'25; Spanish Club '25-'26; Philopyscean Club '26-'27.



Viril M. Swan

Academic

Honor Scholarship Society 4 quarters, sergeant-at-arms '26; manager of high school dance orchestra '25-'27; band and orchestra '24-'27; Spanish Club '24-'26; Boys' Glee Club '27; brass quartet.

Federico G. Trarilla

Academic

Entered S. H. S. from Hoilo Normal '25.

Jean Tully

Academic

Honor Scholarship Society 5 quarters; "A Full House" '25; "The Charm School" '25; pageant '24, '25; A. G. entertainment '25; Open House Night program '25; adviser representative '24; Spanish Club '25-'27; Philopyscean Club '26-'27; Latin Club '24-'26; Social Service Club '27; Orchesis Club '24-'25.

Dorothy Ulrici

Academic

Honor Scholarship Society 14 quarters, vice-president '26-'27, treasurer '25; stellar student '26; chairman program committee state convention '26; Latin Club '25-'27, vice-president '27, Latin play '26, Waterman Latin prizes '25-'26; Philopyscean Club '25-'27, president '27, vice-president '26; Spanish Club '26-'27; Social Service Club '27; U. S. History Club '27, secretary '27; Student Control '26-'27; adviser representative '24-'27; secretary junior class; "The Charm School" '25; "A Full House" '27; first place in central California extemporaneous contest '27; National Forensic League; won pin in oratory '27; literary editor Guard and Tackle Annual '27.

Ruth Evelyn Utt

Academic

Honor Scholarship Society 11 quarters; Latin Club '23-'27; play '26; Press Club '26, '27; Literary Club '27; Philopyscean Club '27; news editor Guard and Tackle Weekly '26, associate editor '27; Guard and Tackle Annual staff, '27; open house night, '26; second prize Potato Day essay contest.

Marion Van Meter

Academic

Entered S. H. S. from Bonne Terre High in '23.

Helena A. Warner

Academic

Awarded circle S and old English S in volley ball '27; chairman of health and efficiency committee and girls' pageant '23-'24; Spanish Club '24-'27; Philopyscean '26-'27; Social Service Club.

Marion Washington

Academic

Honor Scholarship Society one quarter; Latin Club '23-'26; secretary - treasurer '23-'24; French Club '24-'25; Girls' Science Club '25; Student Control '26-'27; secretary-treasurer adviser '24; second freshman prize for composition on "Better Films".

Handwritten: Daniel CHH
Weaver

F. Evelyn Waugh
Commercial
Basketball team '26-'27; volley ball team '27; manager, volley ball '27; awarded old English S and circle numerals in volley ball '27; A. G. A. Committee '27; girls' rooms committee '27; G. A. A. executive committee '27; adviser vice-president '26; Commercial Club '26-'27; Philopsean Club '24.

Neva R. Wells
Academic
Attended Calaveras Union High '23-'24; Mountain View High '24; entered S. H. S. '24.

Alva Weule
Commercial
Commercial Club '25-'27, executive committee '27; adviser representative '24, secretary '25.

Dora Mae Whitley
Academic
Entered S. H. S. from Whittier High '26; Art Club '25; History Club '27.

Orma Whyte
Academic
G. A. A. executive committee '26-'27; Philopsean Club '25-'27, secretary '26; French Club '24-'26; canoeing manager '26-'27; freshman reception '26; Christmas Jinx '27.

Don Williamson
Academic
Honor Scholarship Society 5 quarters; third place in freshman-sophomore contest '24; third place in Shakespearean contest '26; track team '27; Tacky Day costume prize '23; Hi-Y '25-'27, treasurer '26; French Club '23-'26; Science Club '26-'27; adviser representative '27.

Loretta Wriston
Academic
Honor Scholarship Society 2 quarters; "The Passing of the Third Floor Back" '26; Social Service Committee '24-'25; Junior Red Cross Council '25-'26; assembly control committee; manager G. A. A. tennis '26; French Club '24-'26 Social Service Club '27; Philopsean Club '27; drama '27; pageant '25-'26.

Joe L. Yee
Commercial
Honor Scholarship Society 9 quarters; Commercial Club '26-'27; Spanish Club '25-'26; commercial play committee '27.



Carrel Weaver
Academic
Entered S. H. S. from Fremont High School '26; Hi-Y Club '26, secretary '26; Hi-Y plays '26; football team.

Clarice Westphal
Academic
Attended Ripon High School '23; secretary-treasurer of freshman class '23; pageant '23; freshman reception '23; operetta '23; tennis team '23; basketball team '23; awarded monogram pin for basketball '23; Associated Girls' entertainment '23; entered Stockton High '24; French Club '24-'25; Italian Club '26-'27.

Richard H. White
Commercial
Spanish Club '24; Agriculture Club '26; Commercial Club '25-'27, president '26, '27; Senior play February '27; manager commercial play '27.

Blanche Whitt
Academic
Entered S. H. S. from Hoquiam High, Washington '26; at Hoquiam, Girls' Council Club '25, '26; treasurer adviser '24, '26; Student Control '25; Sophomore debating team '25; "Thirteenth Chair" '26.

Lucile Wilde
Academic
"The Passing of the Third Floor Back" '25; chairman of Senior girls' garb committee '27; Spanish Club '25-'27; French Club '26, '27; Latin Club '24; U. S. History Club '27; pageant '24.

Josephine E. Wixson
Academic
Vice-president of freshman class at Merced High School '23; entered S. H. S. '24; editor, Guard and Tackle Weekly '27; associate editor '26; "The Charm School" '25; Press Club '25-'27; vice-president '26, president '27; Literary Club '26-'27, secretary '26-'27; Spanish Club '24-'25; Philopsean Club '26-'27; freshman reception '26.

Blanche Yeager
Academic
Honor Scholarship Society 3 quarters; Spanish Club '23-'24; French Club '25-'26.

Gloria C. Yick
Commercial
Entered S. H. S. from Oakland '25; at Oakland Dramatic Club '25; Literary Club '25; freshmen reception '23, '24; Fashion Show '23, '25; Jinx '25; Commercial Club '26, '27.

Takeo G. Yokoi
Academic
Spanish Club '25, '26; Latin Club '24, Waterman Latin prize '24.

Vicente Armada Zambra
Academic
Entered S. H. S. from Sillman Institute '25.

Thelma Doty
Academic
Secretary-treasurer of Senior class '27; "Three Wise Fools" '27; Honor Scholarship Society 13 quarters; Class Day Committee '27; Senior Play Committee '26; Joke Editor, Guard and Tackle '24-'25; Adviser President '23; Latin Club '23-'27; News Writing '24; Pageant '24; Scrap-Book Committee '26.

Harold Altenhoff
Commercial

Lawrence Bravo
Commercial

Ann Cooper
Commercial

Fay Eckard
Academic
Attended Inglewood High '23-'25; sophomore editor of "Green and White" '25; went to Puente High '25-'26; secretary-treasurer junior class '26; cartoon editor of "Imagaga" '26; secretary Chemistry Club '26; G. A. A. letter '26; scholarship pin '26; interclass debating '26; Spanish Club '25-'26; entered S. H. S. '26; Honor Scholarship Society 15 quarters.



WINTER CLASS
George W. Dohrmann

1927



Ruth E. Yost
Academic
Science Club '25, '26; Literary Club '26; sophomore debating '25.

George W. Dohrmann, Jr.
Academic
Senior class president '27; "Three Wise Fools" '26; junior representative '25-'26; Boys' Student Control '26-'27; varsity football '26-'27, substitute '25-'26; B team football '23-'24, '24-'25; 2 block S's '25-'26; '26-'27; two special blocks, B team '23-'24, '24-'25; Honor Scholarship 5 quarters; Spanish Club '25-'27.

William R. Mendoza
Academic
Attended Long Beach High '23-'25; Spanish Club '23-'24, secretary '24, president '25; Poly-Civic Club '24; guard on football team '23; block "L" '23; won a life pass to Long Beach football games '23; Honor Scholarship Society 4 quarters; entered Stockton High School '25; sergeant-at-arms of Senior Class '26; Spanish Club '25-'27, president '26-'27; Science Club '26-'27.

Alwyn Briones
Academic
Honor Scholarship Society 3 quarters; "Three Wise Fools" '26; Science Club president '26-'27; vice-president Radio Club '26-'27; secretary of Junior Hi-Y '24-'25; Hi-Y Club '25-'27; French Club '26-'27; Spanish Club '23-'26; Agriculture Club '26-'27; Senior class day committee '27.

Clara Bromberg
Commercial
Spanish Club and Commercial Club.

Dorothy Dering
Academic
Adviser Red Cross Representative '27; French Club '25, '27; Latin Club '24; Honor Scholarship Society one quarter.

Amy Fox
Academic

Norma Gagnon
Academic



Raymond Gann
Vocational

Mae Giriodi
Commercial
Adviser representative '24; adviser secretary '24.



Alex B. Grant Jr.
Academic
Vice-president, Science Club '26; Spanish Club '26; Agricultural Club '26-'27; manager of tennis team '25; Spanish Club entertainment '24.

Miles E. Groom
Academic
Honor Scholarship Society 7 quarters, Science Club '26; French Club '25-'26.



Nadalyne Hanks
Academic
Tacky day play '23; Honor Scholarship Society two quarters; Latin Club '22-'27; Commercial Club '26.

Belle Hartwig
Academic
Attended Crow High, Oregon '22; Eugene High, Oregon '23-'24; Berkeley High '25; entered S. H. S. '26; Honor Scholarship Society 4 quarters; Latin Club '24, '26; secretary '24; Commercial Club '24; president '24; Girl Reserves '24.



Don Haskin
Academic
Agricultural Club '26.

Virginia Heller
Academic



Ruth Hughes
Commercial
Honor Scholarship Society 2 quarters; Decoration Committee for Senior Class '27; Refreshment Committee for Freshman Reception '26; Adviser Representative '26; Commercial Club '26-'27; Philopsean Club '26-'27.

Dan Jordan
Academic



Frank Jury
Academic

George Shohachi Kato
Academic
Latin Club '23, '24; Spanish Club '24, '25.



Marcella Kell
Commercial
Pageant '22, '23, '24; entertainment committee freshman reception '24, '26; senior class committee '27; refreshment committee for freshman reception '26; Science Club '24; Commercial Club '26, '27.

Brenus Kenyon
Academic



Masaru Kuwada
Academic
Honor Scholarship Society 11 quarters; "Three Wise Fools" '26; Boys' Science Club '26, '27; Spanish Club '24, '25.

Alice M. Langille
Academic

Honor Scholarship Society 14 quarters; senior basketball team '27; freshman reception '24, '25; Social Service Committee '27; French Club entertainments '25; French Club '24-'26; Orchestra '23-'25.

Charles Livingston
Vocational

Honor Scholarship Society 8 quarters; yell leader '26; soccer team '26; mechanical staff of Guard and Tackle weekly '25-'26; "Three Wise Fools" '26; Print Shop Safety Club '24-'26; secretary '24, president '26; Press Club '25-'26; property manager of senior play '26; adviser president '26-'27.

Harry McKee
Academic

Opera, "The Red Mill" '24; tennis team '23-'26; awarded 2 block S's in tennis for state finals '24, '25; French Club '23-'26.

Jean C. Miller
Commercial

Awarded 2 pins for typing '26; Latin Club; Commercial Club, Philophysean Club; Orchestra.

Otto V. Musoto
Academic

Attended Gustine High '20-'23; entered S. H. S. '25; baseball '22-'23, Gustine; Block G '22-'23 for baseball.

Allison Pope
Academic

Ruple Quigley
Commercial

Honor Scholarship Society 2 quarters; Student Control '26; senior basketball team, '26; chairman of pageant '23, '24, '25; chairman of G. A. A. athletic committee '26; property manager of senior play '26, and of commercial play '25-'26; adviser representative for girls' association '27; freshman reception committee '26; junior-senior prom committee '26; Commercial Club '26-'27.

George Woodruff
Academic



Helene Laska
Commercial

Adviser representative '26; adviser vice-president '24; Commercial Club '26-'27.

Elizabeth McAdams
Commercial

Refreshment committee, freshman reception; scrap book committee; Associated Girls' committee; girls' basket ball team '26; Commercial Club '26-'27.

Ida Miller
Commercial

Awarded pin for typing '26; adviser representative '24; Commercial Club; Philophysean Club '25.

Frank Mirikitani
Academic

Baseball team '25; Agricultural Club '26; Spanish Club '24-'26.

Julia Piombo
Academic

Girls' absent committee '26-'27; Spanish Club '25-'27.

George Price
Academic

Awarded prize for best article on Crockett Sugar Refinery trip '26; Honor Scholarship Society 2 quarters; decoration committee for senior class '27; Science Club '26-'27; Hi-Y Club '27.

Robert Goodwin Youngblood
Academic

Freshman class sergeant-at-arms '22; "Three Wise Fools" '27; Operas "Pinafore", "Mikado", "Red Mill"; boys student control '25-'27; varsity football team '26, '27, second team '23; baseball '23; three circle S's; two block S's; assistant business manager of senior play '27; Block S Society '26; Circle S Society '23-'25, '27; adviser representative '23.

Marie Stemmler Willett
Academic

Pageant '22; freshman reception '23; fashion show '23; girls' rooms committee; Open-House Night '25, '26; French Club '24-'27; Italian Club '26, '27.

Leoni La Vergne White
Commercial
"Clarence" '24; "Martha-by-the-Day" '25; "Seventeen" '26; "Three Wise Fools" '27; "Romantic Age"; Student Control '26; executive committee '26-'27; pageant '24; freshman reception '24-'26; A. G. entertainment '23; French Club '26-'27; Commercial Club '26-'27; adviser officer '24-'25.

Harold Waggoner
Academic
"Three Wise Fools" '26; Spanish plays '24, '25; Boys' Glee Club '26-'27; male quartet '26-'27; Spanish Club '24-'25.

Ivan Joe Tremain
Academic
Fullback on Second team in football '25; Circle S football '25; "Three Wise Fools" '26; French Club '25, '26, sergeant-at-arms '25; Agriculture Club '27, vice-president '27; Latin Club '23, '24; Open House Night '26, '27.

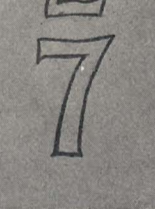
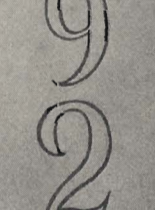
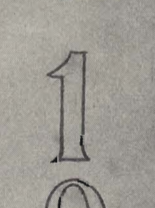
Harold Tarter
Academic

Lee Scott
Academic
Basketball Varsity, Center '26; 120 pound team '23; Class B '24; Football Class B '24-'25; four circle S's; one block S; Boys' Student Control '26; special editor on Guard and Tackle '25.

Arthur Sayles
Academic

Lucile Rule
Commercial
Adviser president '26; adviser treasurer, '24; Commercial Club '26-'27.

Katherine Radovan
Commercial
Awarded pin for typing '26; Commercial Club '26-'27.



Dorothy Weiske
Academic
Pageant '23, '24; Freshman Reception '24; Adviser Representative '23; French Club '23, '24; Philophysean Club '24.

Carl Dalton Valentine
Academic
Attended East Side High School, Salt Lake City, Utah '22-'24; entered S. H. S. '24; stage manager of "Three Wise Fools" '26; Latin Club '24-'26; president '25-'26; Spanish Club '25-'27.

Frances Eldora Tucker
Academic
Honor Scholarship Society one quarter; Spanish Club '26; Latin Club '24-'25; Cadet Class '26.

Anna Tagtmeier
Academic
Spanish Club '25.

Dorothy Scott
Academic
Honor Scholarship Society one quarter; Spanish Club '25, '26, secretary '26; Latin Club '23, '24; adviser president '25.

Vernon Wiles
Academic

Ralph Nagle
Academic
"Three Wise Fools" '26; Hi-Y '22-'24, secretary-treasurer '23; Literary Club president '26; Spanish Club '23-'25; French Club '26; Science Club '26; Cartoonist Club '22; Dramatic Workshop '23; Student Art Leader '26.

Cecil Walters
Academic

Mariorie Mason
Academic
Vice-president of senior class '26.

Hollis Reed
Academic

Olive Grae Blackford
Commercial
Entered S. H. S. from Milwaukee, Wisconsin, '27; Commercial Club '27.

Ruth Johnson
Academic
Attended Central High School, Madison, Wisconsin '22-'24; entered S. H. S. '27.

1
9
2
7



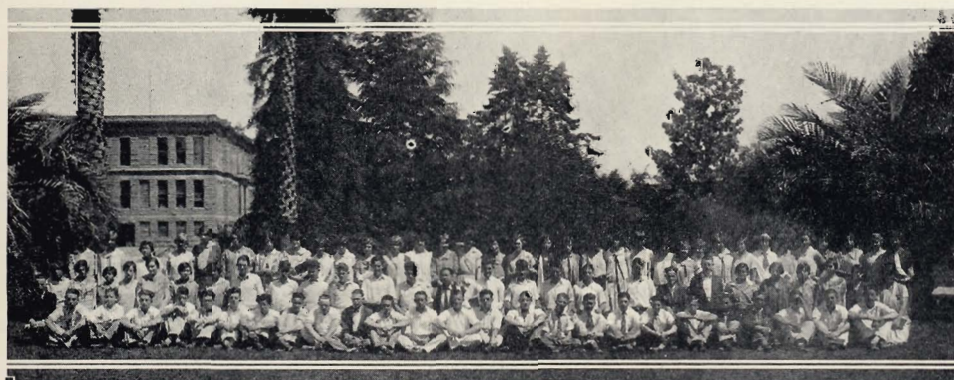
Post Graduate History

Twenty-seven Stockton High School graduates returned this year to continue their studies. High records in scholarship mark the students in this group, with Miles Groom, Alice Langille, Harold Winder, and George Price leading. La Vergne White, the scintillating star of "The Three Wise Fools," and Lola Belluomini, who played the role of Myra Thornhill in "Seven Keys to Baldpate," senior play of '26, were leaders in dramatics. George Dohrmann was prominent in school activities, especially athletics. Harry McKee is well known as the tenth ranking junior tennis player in the United States.

The 12-B Seniors

Indications are that next midyear graduating class will be one of the most outstanding that Stockton High has ever known. In its ranks are students, debaters, actors, and athletes, who have already won recognition in school life. Mary Louise Leistner has always been very active in the Scholarship Society, has won honors in debating, and took part in "The Passing of the Third Floor Back." Frances Fogerty, a member of the public speaking class, also excels in debating.

Miss Lillian Williams' adviser section of 12-B boys won the adviser basketball league championship this year. Ambrose Garrigan represented this adviser and the class on the varsity basketball team. Clark Briggs, yell leader, is also of this class; Richard Dickenson may be expected to lead the Honor Scholarship list some time next year.



Junior History

USUALLY when a bunch of freshmen enter the portals of our "great hall of learning" they hide in the corners until they become used to the scenery. The class of 1928 was different. When they entered, the whole five hundred and forty-two of them marched up to the registrar's office, deposited their grammar school diplomas, and decided to become seniors some day. Today four hundred and thirty-three are still trying.

Soon after this illustrious group had embellished the student body with its lovable personality, it took on the form of a government with George Crane as president; Charlotte Kelly, vice-president; George Sievers, secretary-treasurer; and Elwood Rietz, sergeant-at-arms.

Four provisionals later, the class was still here and had reached the enviable position known about school as "sophomores". However the new "sophs" were not proud. They realized that after all they were just people and as apt to make mistakes as seniors were. So they held a council, the outcome of which was some new guiding hands. The new officers were Ernest Rowe, president; Laurienne McLeish, vice-president; Jeanette Foster, secretary-treasurer; and Richard Parsons, sergeant-at-arms.

Not content with being merely sophomores, the members of this most interesting class astounded the immediate universe with two gems of drama, "The Goose Hangs High" and "The Passing of Third Floor Back". Every time anyone mentioned actors or plays, the talk immediately switched to the two favorite topics of that year—the sophomore plays.

In that year honor was also won for the class on the tennis court by Thomas Hackett, with the junior singles and junior doubles championships of San Joaquin County.

As juniors these ambitious scholars continued working toward the position of senior class and are now looking forward to the fulfillment of their ambition. Next year they hope to show Stockton High School that there never was a class as glorious as the class of 1928.



11A boys

1927

Guard and Tackle



Top, 11A girls; center, 11B boys; bottom, 11B girls

1927

Sophomore History



SWARM of freshmen colonized in the main office, from which it quickly spread to every part of the campus. Algebra and history were smeared in books and on chair rounds in an effort to eradicate the buzzing pests, but they thrived and asked for more. This was natural, for these freshmen were none other than those who just established a record in the name of "the sophomore class of originality", especially original concerning plays.

By way of introduction to this individual class, its first-year officers were Jack Hancock, president; Violet Van Pelt, vice-president; Merle De Camp, secretary-treasurer; and Joe Wells, sergeant-at-arms.

It may have been luck that immuned these freshmen from such fatalities as are occasioned by algebritis, gymnitus, and other such possible infections of the imagination; but it was merit alone, the merit of a famous class that gave it prominence on the calendar of yearly events.

Not unlikely is credit due to the officiating members of the class in its sophomore year, who answered to the names and titles of Andrew Boscoe, president; Normal Hammett, vice-president; Alvin Crow, secretary-treasurer; and Kermit Comstock, sergeant-at-arms.

But the chief reasons for success are without doubt the players who represented their class on the stage, as well as their coach, Miss Ida C. Green. A large crowd was attracted to the season's stage novelty, three one-act plays, "Neighbors", "Maker of Dreams", and "Tickless Time". It was a venture, this program of three short plays, and ventures call for adventurers. The play managers, players, and coach proved themselves to be the adventurers called for.

When, on the night of January 28, a big and curious audience swelled into the auditorium to view the much discussed play, the success of all connected with the production was time's only prophecy; and when the audience had seen and approved the work, time's prophecy had come true. The sophomores had succeeded.

They are the experimenters, therefore the doers; and as such they are as vital to Stockton High School as the spirit of adventure was to them.



10A boys

Guard and Tackle



Top, 10A girls; center, 10B boys; bottom, 10B girls

John
b Harry
↓

Freshman Class



Freshman class officers, left to right: president, vice-president, secretary, treasurer, sergeant-at-arms



JUST WHEN the summer heat was beginning to turn everything brown, last September, 272 wandering pieces of greenery gave Stockton High School that spring feeling. When this first crop had grown to the extent of not looking like a carload of unripe pears, 175 reinforcements removed all traces of winter. This class didn't think much of the taunts of the sophomores, so they didn't even try to amalgamate for protection.

Mr. Berringer and Miss McInnes impressed them with the fact that high school is a place to build up the future. Evangelist John Brown informed them that bricklayers make twenty-five dollars a day; whereupon they put two and two together, got twenty-five, and decided that if a future was to be built, future bricklayers would do the building.

Basketball went to the dogs when, in January, the fresh young ladies won the girls' athletic association basketball championship. Onlookers described the game as a flash of green, a buzz as of many insects, and finally, a freshman girl running across the floor with the ball under one arm and the senior girls' basket under the other.

When "Tacky Day" came along, the rest of the school tried to look funny, but the frosh showed them all up by looking natural.

In the event that wood gives out, the freshmen can be substituted in the manufacture of paper products. Then will be advertised: "Synthetic stationery, form 9-B, extra dumb."



9A boys

1927

Guard and Tackle



Top, 9A girls; center, 9B boys; bottom, 9B girls

1927

Faculty

W. Fred Ellis.....Principal
 E. J. Berringer.....Vice-Principal, Dean of Boys
 Alice McInnes.....Vice-Principal, Dean of Girls
 Laurance N. Pease.....Vice-Principal, Head of Commercial Department
 Homer S. Toms.....Principal Night School

ENGLISH

Ovena Larson, Head of Department	Jessie H. Coleman, Commercial English
Anne Pauline Abright	Winifred Lovejoy
Laura Jane Briggs	Helen Manske
Esther Butters	Lucy E. Osborn
Lily Cliberon	L. Lucile Turner
Ida C. Green	Claude A. Van Patten
Lizette Ward	
Anne L. Harris	
Adelle Howell	
Elizabeth Humbargar	
Catherine Humbargar	
Ben H. Lewis	

FOREIGN LANGUAGES

Anne Marie Bach, Spanish, German	Adeline A. Selna, Spanish
Ralph C. Hofmeister, Latin	Hilmar W. Weber, German
Gladys G. Lukes, French	Charles D. White, Spanish Department
Grace E. Ross, French, Spanish	Lillian P. Williams, Latin Department

HISTORY

Wesley G. Young, Head of Department	John S. Landrum
Laura M. Kingsbury	Daniel A. McClain
Peter W. Knoles	Elinor C. Malic

MATHEMATICS

John S. Reed, Head of Department	Marguerite E. Hubbell
H. A. Bradley	Lucia N. Keniston
Edith L. Chidester	Mary E. McGlothlin

SCIENCE DEPARTMENT

Asa L. Caulkins, Chemistry and General Science Department	Sanford Sweet
J. C. Corbett, Physics Department	Emma F. Hawkins
H. J. Snook, Biology Department	Ada Alexander
Anna Lowrey	Florence L. Gondring
Myrtle E. Olsen	Stella Johnson
Ralph S. Raven	Harriet M. Keating
	Constance Post

ART, MUSIC

Elizabeth Montgomery, Art Department	Genevieve Burcham, Harmony
Amy A. Pahl	Andrew Blossom, Band, Orchestra
A. N. Davies, Draughting	Frank Thornton Smith, Vocal Instruction

COMMERCIAL

Elizabeth Carden	Laurance N. Pease, Head of Department	Harry A. Hibbard
J. H. Carmichael	Mrs. R. W. Decker	A. R. Reelfhorn
Lucy E. Crosby	Helena Dolfin	Mrs. G. Schuler
M. Aloys Daly	Lilien Eberhard	Bernadine Ungersma
B. I. Van Gilder	Grace M. Harriman	P. A. Kerr

VOCATIONAL

Floyd R. Love, Supervisor	J. H. Harrison	Charles H. Libhart
John M. Bond	Ralph Herring	Edwin L. Pister
Arta Oldham Bradt	J. Mitchell Lewis	James A. Smith
Edwin D. Comer		
I. L. Van Vlear		

PHYSICAL EDUCATION

Agnes D. May, Girls' Physical Education	J. C. Cave, Boys' Physical Education
Grace U. Bliss	Wallace McKay
Frances Sheltman	H. B. Lenz
	Fred F. Solomon



Faculty
A Friendship

First Prize

A friendship is a flaming rose—

At first a green and tiny bud
Until it feels the sunlight flood
Into its heart, and then it grows.

A rose with petals loose and pale
A summer wind may waft away,
But mine so red, so firm will stay
To blossom through the strongest gale.

Inez Macneil.

The Campus

Second Prize

With palms and oaks and evergreens
And cheerful pyracantha screens,
The graveled paths, the benched retreat
For hot and weary plodding feet,
With arches dim and colonnades,
And by the pillars, men and maids
Carrying out the world-long plan
Of learning, loving—maid and man;
The campus with its loveliness,
Above, the blue, below, the grass,
With faith and loyalty inspires
The steady, ever-burning fires
In son's or daughter's loyal breast,
The will to brave the gravest test.

Josephine Wixson.



THELMA TRETHEWAY

IN MEMORY
OF
MR. ROYAL W DECKER