

## WOMAN'S STATE ORGANIZATION

The Woman's Board is forming auxiliaries in every county in the State, giving the women of the State an active association with the Exposition.

Assistant in Department of Fine Arts.....	Mrs. Francis Carolan
Assistant in Department of Manufactures.....	Mrs. John Flournoy
Assistant in Division of Exploitation.....	Mrs. Ernest S. Simpson
Assistant in Department of Live Stock.....	Mrs. William Grant



THE CALIFORNIA BUILDING

Designed by Thos. H. F. Burdette. This building is in the old Mission style and covers approximately 350 feet by 675 feet. In form it consists of a towered main building, two stories in height, and surrounded by an immense court. Its construction and furnishings represents an outlay of considerably over half a million dollars. This is the "Host Building" of the Exposition. It contains the displays of the fifty-eight counties of California. This building, with its walled-in court and park, covers about seven acres. The Woman's Board, an auxiliary of the Exposition, has assumed the responsibility of furnishing and maintenance, and has entire charge of its social administration.

# Panama-Pacific International Exposition

SETTING FORTH THE WORLD'S PROGRESS IN ART,  
MUSIC, POETRY, RELIGION, PHILOSOPHY, SCIENCE,  
HISTORY, EDUCATION, AGRICULTURE, MINERAL-  
OGY, MECHANISM, COMMERCE AND  
TRANSPORTATION.

## PROGRESS

The progress of the Panama-Pacific International Exposition is unparalleled in the history of expositions and is a forecast of the magnificence and comprehensiveness of the Exposition upon its opening day, February 20, 1915. The progress of the construction work is visible to every visitor to the grounds. The eight main exhibit palaces—Manufactures, Education and Social Economy, Mines and Metallurgy, Varied Industries, Transportation, Liberal Arts, Agriculture, and Food Products—are practically completed and are ready for exhibits. The Palace of Machinery is ready. The steel work on the Palace of Fine Arts has been finished and the framework for the rotunda is being placed. The Palace of Horticulture, with its immense glass dome—152 feet in diameter and 180 feet high—has also been completed and the magnificent floral displays of the world are being planted therein. The steel Tower of Jewels, 433 feet high, is being constructed and will soon be finished. Three handsome fire stations are ready and automobile equipment has been installed in the central station. The million-dollar Exposition Auditorium is nearing completion. The 4,000,000 square feet of road are being rapidly packed into smoothness and covered with resilient red rock, which will be easy on the feet and will eliminate the glitter which tires the eyes. Hundreds of trees have been transplanted into their permanent places along the drives and in the gardens. More than 10,000 quick-growing vines are spreading their tendrils along the walls of the buildings and the fence enclosing the Exposition, and millions of blossoming flowers have been planted in the gardens and courts. Hundreds of beautiful pieces of sculpture have been finished and placed in position and the immense canvases of the celebrated mural artists are ready to be placed. The concession area is being rapidly built up and is assuming the form of a great pleasure city. To date thirty-six foreign nations have accepted the invitation of the United States Government to participate and many of these have already commenced construction of their pavilions. Up to date forty-four States and Territories have either made provision for participation or are now actively engaged in doing so. From present indications practically every State will be represented and many of these are completing their magnificent buildings. The United States Government has appropriated \$500,000 for the national exhibits at the Exposition, and a bill is now before Congress with the recommendation of the President that \$500,000 more be appropriated to erect a building in which to house them. Two hundred and twenty-six congresses and conventions have already chosen San Francisco as their meeting place in 1915. Applications have been received for space for many thousands of exhibits in the various exhibit palaces.

"We'll be ready February 20, 1915," declared President Charles C. Moore of the Exposition two years ago, and that promise still holds good, backed by the good management of the Exposition directorate and the tireless energy of the builders of the mammoth celebration.

## THE AMUSEMENT OR CONCESSIONS DISTRICT

"The Zone," the main amusement street, is 3000 feet in length and runs through the center of this district. Sixty-five acres is devoted to the amusement features of the Exposition. This section is open from 9:30 a. m. until 11:00 o'clock p. m. This division of the Exposition represents an outlay of over \$10,000,000. Rigid selection has governed the granting of all of the concessions. Every one admitted has satisfied a high standard of propriety, good taste, and educational value, as well as effective fun-making and entertainment.

## THE EXPOSITION AUDITORIUM

Designed by Messrs. John Galen Howard, Frederick H. Meyer and John Reid, Jr. The Exposition Auditorium is a building of four-story construction of steel and stone, and will grace the Civic Center of San Francisco. It will be a lasting and beautiful monument to the Panama-Pacific International Exposition. The Exposition management paid over one million dollars for its erection and the City and County of San Francisco paid nearly a million dollars for the site. The main auditorium of this building will accommodate 12,000 persons.

## CENTRAL GROUP PALACES

It is not possible to name any one person as the designer of the following eight palaces comprising the central group. They are composite in design, each facade partaking of the particular style of architecture dominating the court on which it fronts:

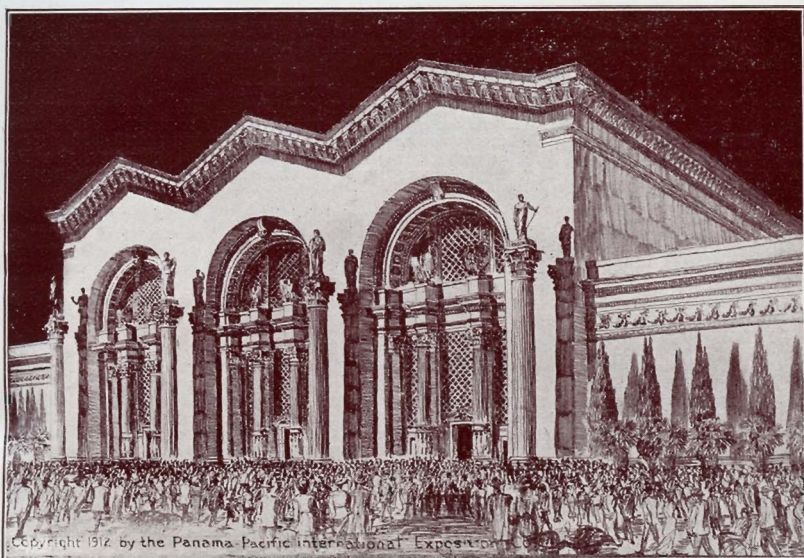
### THE COURT OF ABUNDANCE

Designed by Louis C. Mullgardt. This is the east central court of the Exposition and in design will show the Oriental phase of the Spanish-Moorish type. This court will be dedicated to music, dancing, acting and pageantry.

### THE COURT OF FLOWERS

Designed by George W. Kelham of San Francisco. This is the second of the minor courts, also having its entrance from the great South Garden, between two Italian towers, almost the exact duplicate of those at the entrance to the Court of Palms. While being the smallest of the Exposition courts, it is, nevertheless, as beautiful as the others, and, as the name denotes, is a paradise of vari-colored flowers.





### PALACE OF MACHINERY

The Palace of Machinery is a magnificent structure 968 feet long and 368 feet wide, with a floor space of more than seven acres. Decorative figures representing steam, electricity, air and water adorn the building. Exhibits of most recent mechanical inventions, with many working models, await the study of all interested in mechanics.



### EXPOSITION AUDITORIUM, CIVIC CENTER, SAN FRANCISCO

The Exposition Auditorium is a four-story structure of steel and stone, and graces the Civic Center of San Francisco. It is a lasting and beautiful monument to the Panama-Pacific International Exposition. The Exposition management paid over one million dollars for its erection and The main auditorium will accommodate twelve thousand

It was designed by Messrs. John Galen Howard, Frederick H. Meyer and John Reid, Jr.



### THE COURT OF THE FOUR SEASONS

Designed by Henry Bacon of New York. This is the west central court and one of the most beautiful sections of the Exposition. It is said that Hadrian's Villa, one of the historic Roman palaces, is the inspiration for this court. It is surrounded by a beautiful colonnade, in each of the four corners of which are niches containing statuary representing the four seasons.

### THE COURT OF THE UNIVERSE

Designed by Messrs. McKim, Mead and White of New York. This is the great central court, or court of honor, of the Exposition, and in design and decoration it is made to represent the meeting place of the hemispheres. It is 700 feet long and 900 feet wide, and contains a sunken garden in the center. At the northern end, between the Palaces of Agriculture and Transportation, is a great pool of water, embellished with statuary and fountains.

### FESTIVAL HALL

Designed by Robert Farquhar of Los Angeles. This will be the scene of many of the great festivals and choral competitions entered into by the various singing organizations of the world. Festival Hall is built in the French theater style of architecture, with one large dome and various minor domes and minarets, profusely decorated with statuary. The main hall contains seats for about 3000 persons, and here is placed a huge pipe organ, which is seventh in size in the world.

### LIVESTOCK EXHIBIT

In keeping with the general plan of the Exposition the Department of Livestock will be presented in a better manner than has heretofore characterized such exhibitions. Competition for the \$175,000 in prize money appropriated by the Exposition, and for the supplemental premiums offered by the breeders' associations, will take place in the months of October and November. In addition to this, there will be a continuous livestock display in 1915 from February 20th to December 4th. In housing, classification and arrangements of the exhibits the Department of Livestock at San Francisco will demonstrate the advancement that has been made since the last world exposition. Special events will include universal polo, international cavalry contests, two harness-horse racing meets, and the carrying on of a series of demonstrations which will teach everything that is new in this important industry.

### PALACE OF AGRICULTURE

The section of this Exposition devoted to the interests of agriculture embraces an area of more than 40 acres. The Palace of Agriculture proper will cover 7½ acres. The exhibits deal with every possible phase of the agricultural industry. A very important group is devoted to farm implements and machinery. No less than seven distinct classes are required. In this department also are shown all that pertains to forestry and forest products.

### PALACE OF AGRICULTURE (FOOD PRODUCTS)

Under this same department, although in a separate palace, the multiform exhibits governing the food products of the entire world will be grouped. Vegetable and animal food products and the equipment and methods employed in the preparation of foods and beverages will be extensively shown.

### PALACE OF EDUCATION AND SOCIAL ECONOMY

The exhibits in this palace will show development along these lines since 1905, and by specializing on prominent movements and reforms will seek to forecast the education of tomorrow. There will be a comparative exhibit of the educational systems of all nations participating and a comprehensive demonstration of educational work in the United States in all its phases from kindergarten to university. The Department of Social Economy will bring together a comprehensive collection of exhibits illustrative of the conditions and necessities of man considered as a member of organized society and government, together with displays showing the agencies or means employed for his well being. As far as possible operating examples will be given. Child welfare, and the work of organizations, such as boy scouts, campfire girls, etc., charities, corrections, criminology, urban problems, park systems, public buildings, street improvements, methods of disposing of sewage, etc., will receive exhaustive treatment by exhibits. Such matters as finance in its relation to the public welfare and in connection with such agencies as banks and provident associations, modern credit associations, etc., will be illustrated. All matters pertaining to commerce in the way of distribution of goods, business standards and systems; all labor problems involving working conditions and standards, welfare and efficiency and including domestic science and women's vocations, will be exhaustively studied and compared by exhibits. The latest discoveries in hygiene, methods of missionary work, international and universal peace institutions, diplomatic and consular systems—all these will receive a broad and sympathetic treatment by exhibitional studies.

### PALACE OF FINE ARTS

#### Exposition Palaces and Courts

Designed by R. B. Maybeck. Its length from north to south describes an arc 1100 feet. This palace will face upon a great lagoon of placid water, which will reflect its beautiful architecture. It will be a fireproof structure. In the center of the arc will be erected a great dome with steps leading down to the lagoon in a beautiful setting of shrubbery, composed of Monterey cypress and other evergreen trees, making perhaps the prettiest setting of the whole Exposition site. The painting and sculpture of every nation of artistic prominence will be artistically shown in this palace. The exhibits in the United States section will consist not only of the work of contemporary artists, but of historic American paintings from the time of West, Copley and Stuart to the present, and a loan collection of canvases by foreign artists owned in the United States. The installation of the canvases and small bronzes will be intimate. The color scheme of the galleries varying to serve as a sympathetic background for their contents.

### PALACE OF LIBERAL ARTS

Liberal Arts rank high in the classification of exhibits because they embrace the applied sciences which indicate the result of man's education and culture, illustrate his tastes and demonstrate his inventive genius and scientific attainment and express his artistic nature. This splendid palace is directly opposite the main entrance to the Exposition grounds from the city side, and is approximately 585 feet long, 470 feet wide and 65 feet high, and covers nearly six acres.





COPYRIGHT 1914 BY THE  
HARRIS & WATSON INTERNATIONAL PUBLISHING CO.

Palaces of Machinery, Mines and Metallurgy and Varied Industries



### THE GREAT PALACE OF MACHINERY

Designed by Messrs. Ward and Blohme of San Francisco. This palace is the largest building erected on the Exposition site. It is 968 feet by 368 feet. One mile and a half of cornices was used in ornamenting the building. Four carloads of nails and 1500 tons of bolts and washers were used in its construction. In this palace are assembled exhibits of machinery used in the generation, transmission and application of power. Several groups comprise examples of steam generators and motors utilizing steam, internal combustion motors, hydraulic motors, miscellaneous motors, general machinery apparatus and accessories, and tools for shaping wood and metals. Ten special electrical groups cover the generation, distribution and control of electrical energy in its application to mechanical and motor power, lighting and heating.

### PALACES OF MANUFACTURES AND VARIED INDUSTRIES

The department of a universal exposition, which has the combined interest of all nations, is the exhibition of finished products of manufacture and manual skill, the objects of utility, luxury and taste in which each country excels and which constitute the most valuable and profitable part of foreign trade. The various nations show with honest pride and satisfaction their artistic products. The art industries of the world are brilliantly displayed in the Palaces of Manufactures and Varied Industries.

### PALACE OF MINES AND METALLURGY

The exhibits in this palace deal with the natural mineral resources of the world, their exploration and exploitation, their conversion into metal, their manufacture into structural forms and into raw material for the various industries. They take in the ordinary metallics such as gold, silver, copper, lead, zinc, iron, aluminum, etc.; the rare metallics such as tungsten, vanadium, uranium, radium, platinum, etc.; the non-metallics such as clay, cement and their products; coal oil and gas; the salines, fertilizers, etc. The object of the mines and metallurgy exhibits is two-fold: first, to draw attention to the natural mineral resources of each country, state or community so that the public may learn of the mode of occurrence of the metals of commerce and their distribution, of the stage of development of the various districts, of present sources of supply and consumption, and of possible future sources of supply and of extended markets; second, to educate the public in a general way regarding the details of the industry, its problems and its needs.

### PALACE OF TRANSPORTATION

The exhibits in this palace are, as far as possible, contemporaneous, not historical. There are displayed the very latest achievements of human ingenuity covering the entire field of transportation. On account of the great development of the motor-boat industry and aerial navigation these two groups are thoroughly represented, both in indoor and outdoor exhibits. In this palace is shown the exhibits of all the great steamship companies, the water transportation of all countries, their navigation and commerce, characteristic boats and ships of all nations. Sail and steam yachts are generally shown by models. Electric exhibits show the latest application of electricity to the agency of transportation. A locomotive exhibit illustrates the latest types. Car exhibits show the modern development of street car equipment, and there is a complete showing of railway supplies, including all the new inventions and appliances for the protection of life and property in this connection.

### STATUARY

Over 250 distinct groups and hundreds of individual pieces of statuary will be shown at the Panama-Pacific International Exposition. These comprise among others the following groups and subjects: "Nations of the East," "Nations of the West," "The Colossal Column of Progress," "Spring," "Summer," "Autumn," "Winter," "Fountain of Energy," "Fountain of Youth," "The Fountains of the Rising and Setting Sun," "Fire," "Water," "Earth" and "Air," "Order and Chaos" and "Eternity and Change," "Modern Civilization," "Armored Horseman," "Philosopher," "Adventurer," "Priest," "Soldier," "Fountain of Eldorado," "Nature," "Ceres," "Beauty and the Beast," "End of the Trail," "The Pioneer," "Cortez," "Pizarro," "The Miner," "The Pirate," "Primitive Man," "Primitive Woman," "Steam," "Electric Power." Besides these figures and groups are many beautiful friezes, spandrels, capitals, niches and columns decorated with allegorical subjects. This array will combine to make statuary at the Panama-Pacific International Exposition one of the leading and most interesting features.

### "TOWER OF JEWELS" OR MAIN TOWER

Designed by Messrs. Carrere and Hastings of New York. This tower rises to a height of 433 feet, and, from an architectural standpoint, is the dominating feature of the Exposition. This is the center of a brilliant night illumination, the outline of the tower being defined by over 100,000 hand-cut glass "jewels," or prisms, hung tremulously, the least atmospheric disturbance causing them to flash and change and scintillate in a thousand different tints and colors.

### THE COURT OF PALMS

Designed by George W. Kelham of San Francisco. This is one of the two minor courts of the Exposition. Its entrance is from the great South Garden, between two towers, each rising to a height of 200 feet and favoring in architecture the period of the Italian Renaissance. This court will contain a showing of rare and beautiful palms.

### "THE ZONE" OF THE EXPOSITION

The concessions at the Exposition will be unusual, not only for their high artistic value and great educational worth but also for the large outlay required in their presentation.

The concessions area is a long narrow strip of sixty-five acres, opening out upon Van Ness avenue, one of the principal boulevards of San Francisco, and leading thence westward to the main group of exhibit palaces. Through its center runs the street of concessions; in the center of the district will be a great "Plaza of Wonders," in which will rise the highest flag pole in the world, a giant fir 246 feet in height and over five feet in diameter at the base; this enormous pole was donated by the citizens of Astoria, Oregon.





COPYRIGHT 1914 BY THE  
PANAMA-PACIFIC INTERNATIONAL EXPOSITION CO.

Palace of Varied Industries



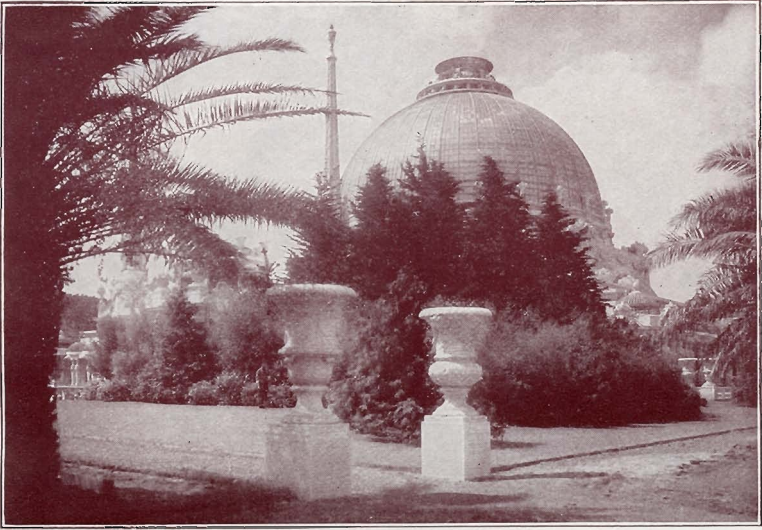


COPYRIGHT 1913 BY THE  
PANAMA-PACIFIC INTERNATIONAL EXPOSITION CO.

SECTION 100

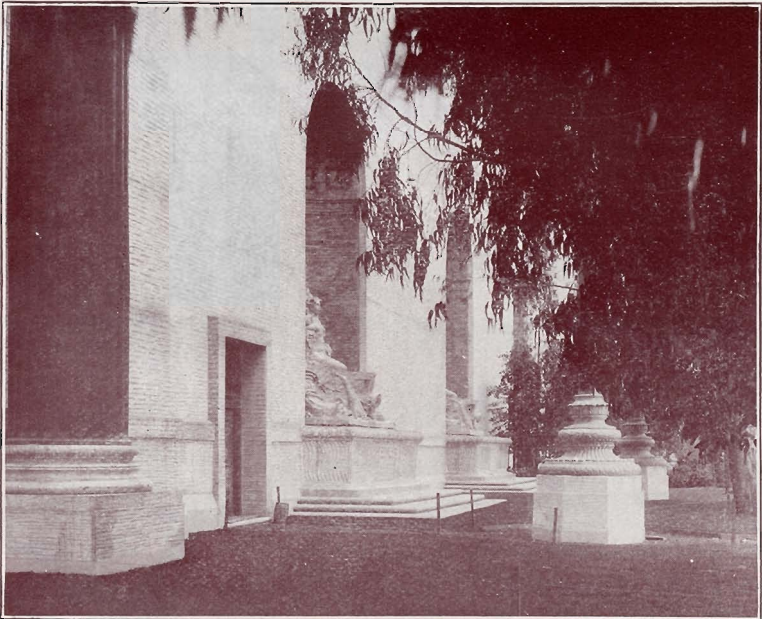
Portal Palace of Education





#### PALACE OF HORTICULTURE

Designed by Messrs. Bakewell and Brown of San Francisco. This palace is constructed almost entirely of glass and covers over 5 acres. It is surmounted by a dome 160 feet in height. It is 672 feet long and its greatest width is 320 feet. An imposing nave 80 feet in height and runs the length of the building and paralleling the central nave are (one on either side) two side aisles each of 50 feet in height. All phases of practical horticulture will be embraced in this exhibit. Among other things a fully-equipped fruit-canning establishment in operation, showing the sanitary way in which fruit is prepared and canned; a seed-packing establishment, orange-packing house, olive oil presses in operation; tools used in the culture of fruits, trees and flowers. The frostless climate of California, which enables plant life to attain the highest perfection, will give the floricultural exhibit a distinction and beauty it has not been possible to attain at other expositions, where the seasons have been short and the winters severe. There is to be a rose contest in which the Exposition offers as trophy a thousand-dollar cup to the originator of the finest new seedling rose which has never before been exhibited.



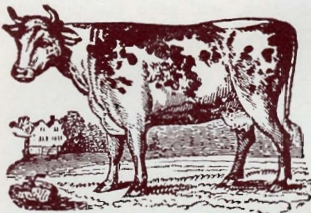
West Facade Palace of Education



The  
Leading  
Firms  
Represented  
in the  
Pure Food  
Department



Sell only  
Goods and  
Delicacies  
which are  
in strict  
compliance  
with the  
Pure Food  
Law



## Dairy Delivery Co.

Main Office 3550-70 19th Street, San Francisco

The most modern and best equipped milk distribut-  
ing plant on the Coast.

Our specialty is Certified and Pasteurized Milk and  
Cream. We pasteurize by methods that count and  
our Certified Milk is second to none.

BEFORE ORDERING ELSEWHERE

Phone Market 2716

Why not spend an interesting half hour and see  
for yourself how we do it.

To Get Stronger Every Way

Drink **FER-MIL-LAC** Every Day

If we can induce you to try it;

We are sure you will continue to buy it!

## Fancy Cakes--Fancy Pastry

Eppler's New Process  
Bread--For Quality

Purity and Wholesome-  
ness Not Equaled

Store 1--2828 California St.

Phone West 987

Store 2--512 Clement St.

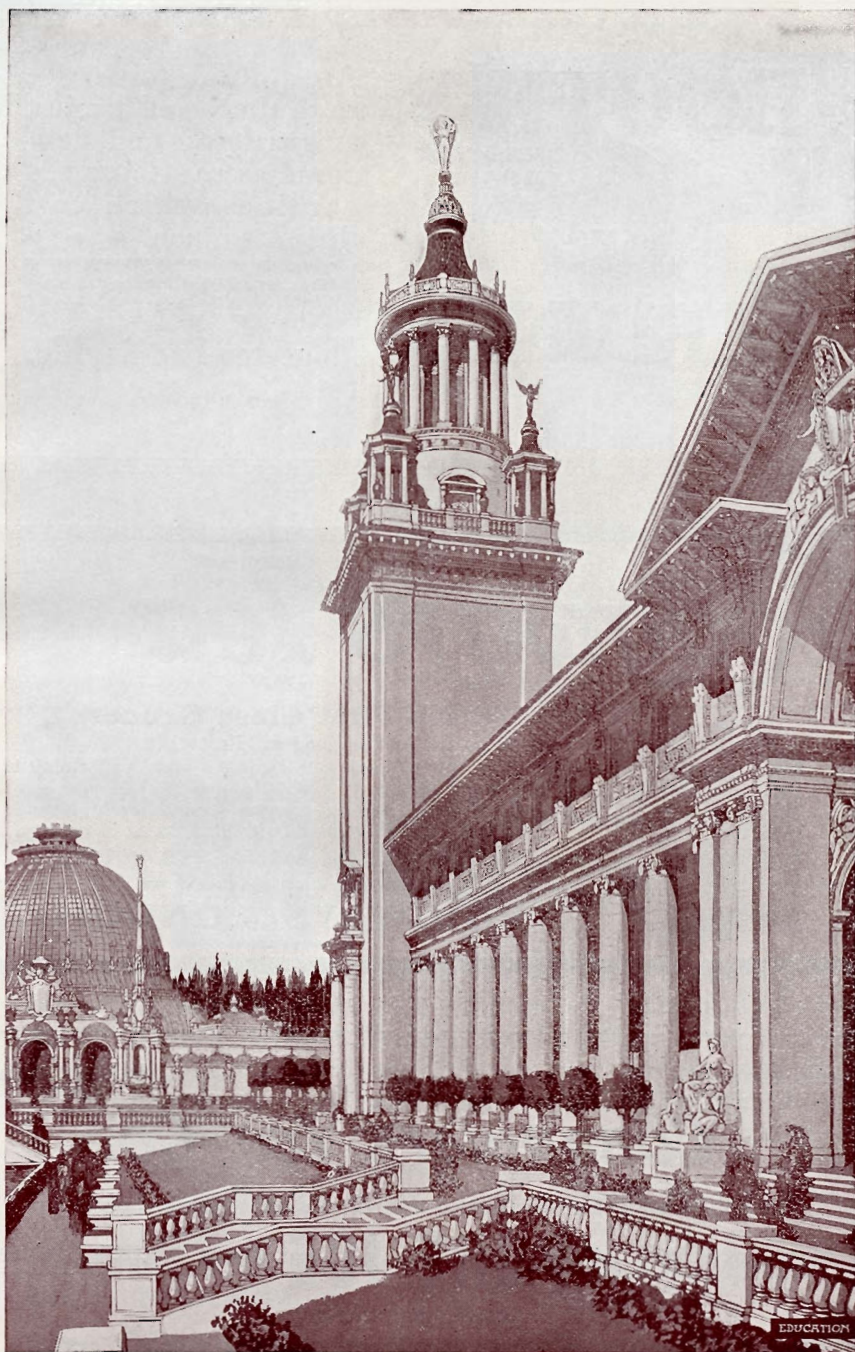
Phone Pacific 3805

Store 3--Sutter at Powell

Phone Kearny 2978

**SAN FRANCISCO**





### TOWER OF JEWELS

Tower of Jewels rising to a height of 433 feet, studded with 125,000 jewels. Looking south in the Court of Palms, showing the facade and tower of the Palace of Education, the Palace of Horticulture in the background.



**BOOTH'S****SARDINES**

Are available for service at all times and are just as satisfying and delicious as the imported Sardines which cost thrice as much. *u u u*

*Write for a Recipe Book containing  
Clever Suggestions for the Service  
of These Fish*

**Monterey Packing Co.**  
110 Market St., San Francisco

# Ridgways Tea



## At All First Class Grocers

There is no tea just as good as "RIDGWAYS." RIDGWAYS supplied tea for the late Queen Victoria's use for forty years.

RIDGWAYS' prices are no greater than other high-grade teas that do not compare with RIDGWAYS in quality.

PRICES \$100, 75c and 50c PER POUND

BLENDING AND PACKED BY

**RIDGWAYS LONDON**

SINCE 1836

GEO. R. SNEATH  
President

THOS. A. DeLAY  
Secretary

## Consumers Ice Co.

Ice delivered in San Francisco and throughout San Mateo County

Manufacturers of **PURE ICE** from Distilled Water

OFFICE AND FACTORY

**436 to 448 EIGHTH STREET**

Phone Market 78

**SAN FRANCISCO**



Showing the Extensive Addition Made Necessary by Rapidly Increasing Patronage

# Hotel Shattuck

BERKELEY'S ONLY FIREPROOF HOTEL  
AMERICAN OR EUROPEAN PLAN

Reinforced concrete building. One block from depot. Thirty-five minutes from San Francisco. Beautifully furnished. Rates \$3.00 per day and up, American plan; \$1.50 per day up, European plan. Special rates by the month.

That the service has been appreciated has been proved by the popularity of the hotel for civic meetings, family dinners, banquets and permanent guests.

Ground shell tennis court, children's play ground, sun porch, lawn and croquet.

Less than a block from railway stations and street car service. For reservations, telephone Berkeley 7300.

*Direct Service to Panama-Pacific International Exposition.*

**NOAH W. GRAY, Manager**



# Hotel Oakland

OAKLAND HOTEL COMPANY (Owners)

Corner of Harrison and Fourteenth Streets Oakland, California

Telephone. Lakeside 100.



Every Modern Feature Adopted in Its Equipment

A Class A Fire Proof Structure

Magnificent and original Idea in decorations

The newest and greatest achievement of the City of Oakland, whose amazing growth within the past decade from a town to a metropolis, has made it the "wonder city" of the Coast.

Here is a new hotel worth while, in a city of surpassing loveliness of climate and environs, whose phenomenal industrial development is attractive alike to the pleasure seeker, business man and investor.

Four hundred and sixty rooms with outside exposure.

Under the management of

**VICTOR REITER**

formerly with **Palace Hotel, San Francisco**

# Berkeley Inn

BERKELEY, CALIFORNIA

100 Rooms Equipped in the Most Complete Modern Manner,  
Beautifully Furnished. Special Rates for Time Guests



## AMERICAN PLAN

*Rates, \$3.00 per Day and Up*

*Suites Monthly, \$140 to \$175*

NO FINER MENU ANYWHERE

In the center of Beautiful Berkeley, California adjacent to the University of California. Grand view of the Bay Cities. Outlook covers San Francisco Bay, Golden Gate and the imposing Berkeley Hills. *35 Minutes to San Francisco 20 Minutes to Oakland. 10-Minute Service.* Finely furnished. Every most modern feature in equipment is supplied. Phone Berkeley 6370

TELEGRAPH AND HASTE STREETS



# HOTEL VENDOME

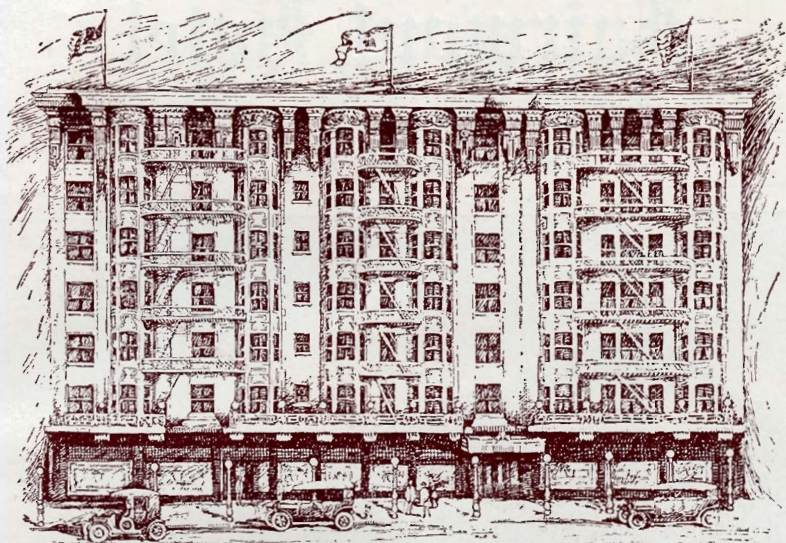
ROY NEWBERRY . MANAGER



**T**HE Hotel Vendome, thoroughly up-to-date, located in a beautiful park of twelve acres within a few blocks of the center of the city of San Jose, offers the advantages of both city and country life. The atmosphere is a combination of mountain and sea air, well mixed because of unusual relative location of ocean, mountains, bay and valley. It is an out-of-door climate. The evenings are always cool and comfortable. There are 27 trains daily each way to and from San Francisco, making the trip in about 1½ hours or less. The bathing pavilion, run in connection with the Hotel Vendome, is one of the best and most attractive in the State; bowling alleys and tennis courts furnish amusement for guests and their friends. Over 100 miles of electric car lines run to Alum Rock Canyon Park, Congress Springs, Cupertino, Saratoga, Los Gatos and Campbell. Automobile trips and carriage drives to Almaden Mines, Stanford University, Evergreen, Alviso, Edenvale and many other attractive places, all over well-kept and well-watered roads. Automobiles for Lick Observatory leave Hotel Vendome daily except Sunday, returning same day.

**THE VENDOME HOTEL COMPANY, Proprietors**

A HOTEL OF HIGH STANDARD, BUT REASONABLE  
IN ITS CHARGES



# Hotel Stewart

GEARY STREET ABOVE POWELL

SAN FRANCISCO

**European Plan \$1.50 Up**

**American Plan \$3.50 Up**

The HOTEL STEWART has entertained guests from every part of the world. It is favorably known to travel from the Orient, the Islands, Coast ports and to the Army and Navy. So popular has the Stewart become that two additions (one in 1910 and one in 1913) became necessary. The Stewart is located in the very center of the shopping, theater and cafe districts. It maintains a dining-room service unequalled in San Francisco. The appointments are the best—not over-luxurious, but comfortable and homelike. Every steamer and train is met by uniformed representatives with the Stewart auto bus. The Geary Street line (Municipal Railway) passes the door from the Union Ferry Depot. From the Third and Townsend Depot the Third street cars transfer to the Geary. Any part of the city can be reached from the Stewart Hotel by street cars on one fare

When Paying Fare From Third and Townsend Sts. Ask for Geary St. Transfers

AFTERNOON TEA SERVED IN THE DINING ROOM FROM 2 TO 5 P. M.  
ARRANGEMENTS CAN ALSO BE MADE WITH THE HEAD WAITER FOR  
SPECIAL TEA OR CARD PARTIES IN THE GREEN ROOM

**CHAS. A. STEWART and MARGARET STEWART**

PROPRIETORS



# Fairmont Hotel

CALIFORNIA AND MASON STREETS

San Francisco, Cal.



OPERATED ON THE AMERICAN AND EUROPEAN PLAN  
Rates—Single room with bath, \$2.50 per day upward.

Suites \$10 upward

The most superbly situated hotel in the world.

Overlooking the Gate, the Bay of San Francisco and the growing city—a wonderful panorama.

Covers an entire city block.

Absolutely fireproof—by test.

Convenient to shopping, business and theater centers. Only five minutes' ride from ferries.

Reached by street cars from every direction.

The only hotel in the world in which EVERY room has attached bath.

Combines all the conveniences and luxuries a good hotel should have with many delightful features original and exclusive to itself.

Has accommodation for 1,000 guests.

Under the Management of  
**THE PALACE HOTEL COMPANY.**

Charles A. Cooke, Manager

Telephone Kearny 3900. Private Exchange connecting all Apartments.

# Palace Hotel

SAN FRANCISCO



## THE PALACE HOTEL

With its large sample rooms for commercial purposes—spacious assembly rooms for conventions—royal suites—Gothic grill—Louis Seize restaurant—sun court and tea room—wide marble corridors and its beautiful ball rooms—is one of the famous hotels of the world

## THE SUN COURT

A grand daylight court—85 feet wide by 110 feet long—with dome of bronze and leaded glass supported on either side by a double row of giant columns of finest Italian marble. Opening from this are the beautiful restaurants

FAMOUS ALSO FOR

## Court, Cuisine, Service

TELEPHONE  
SUTTER 700

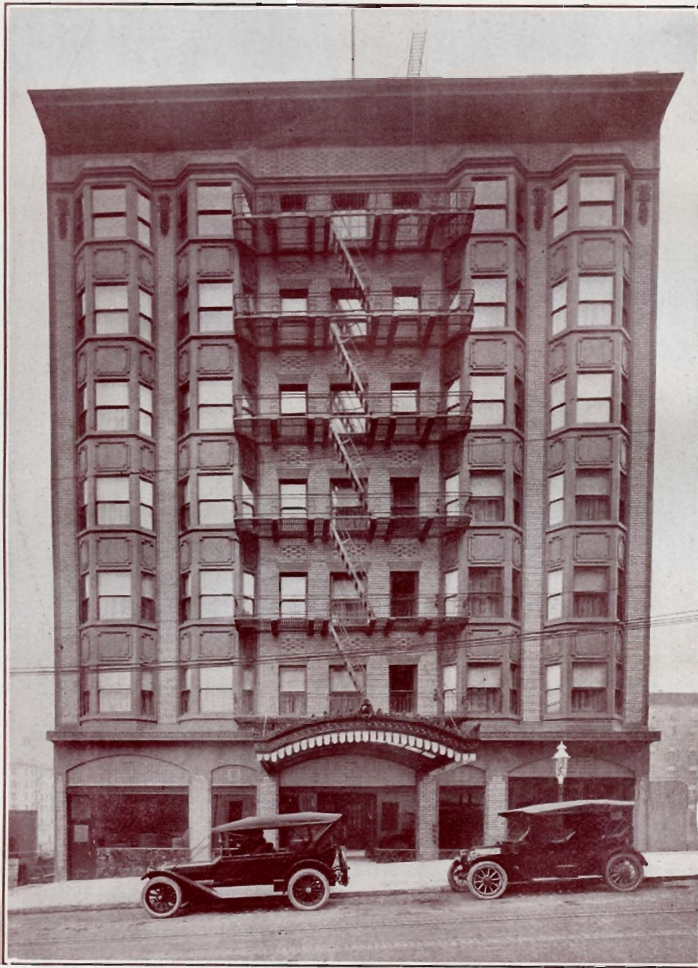
UNDER THE MANAGEMENT OF THE  
PALACE HOTEL COMPANY



A Modern and  
Refined Exclu-  
sive Family  
Hotel

The New  
**Hotel Cecil**  
CENTRALLY LOCATED

Post Street  
Between Taylor  
and Jones



Under the Management of MRS. W. F. MORRIS

Here will be found all modern conveniences that go to make an up-to-date, luxurious hostelry, with a beautiful Dining-room and Unexcelled Cuisine, convenient to clubs, shopping, business and theater centers.

BEAUTIFUL BALLROOM AND SUN PARLOR FOR AFTERNOON TEAS  
"THE DANSANT" AND SOCIAL FUNCTIONS  
150 ROOMS EN SUITE AND SINGLE. EVERY ROOM WITH A BATH

TELEPHONE PROSPECT 180

AMERICAN and EUROPEAN PLAN



# Hotel St. Francis

UNION SQUARE, SAN FRANCISCO



MURAL PAINTING IN THE NEW CAFE

The new cafe with its series of seven great mural paintings by Albert Herter,  
is the most beautifully decorated public room in the world

Under the management of

**JAMES WOODS**





# Hotel Plaza

AT THE CORNER OF POST AND STOCKTON STREETS  
OVERLOOKING THE PLAZA OF UNION SQUARE

*San Francisco's  
Newest Hotel*



TELEPHONE  
GARFIELD 8200

JOHN G. BARKER  
MANAGING PROPRIETOR

# Belleuve Hotel



POSITIVELY FIREPROOF

N. W. Corner Taylor and Geary Streets  
San Francisco

TELEPHONE FRANKLIN 3636

**EUROPEAN PLAN** from - - - - - **\$2.00 A DAY**  
**AMERICAN PLAN** from - - - - - **\$4.00 A DAY**

*EVERY ROOM WITH BATH*

Taxis meet all trains. Location central, within easy walking distance of principal shops, half block from Columbia Theater

*A High-Class Tourist and Residential Hotel*

**H. W. WILLS, Manager**



## “AN HOTEL OF UNUSUAL MERIT”



HOTEL HERALD, EDDY & JONES STREETS, SAN FRANCISCO

LEO. LEBENBAUM - Manager

# HOTEL Herald

AT THE CORNER OF  
EDDY AND JONES STS.  
SAN FRANCISCO

### A Letter of Appreci- ation

There is a little hotel in San Francisco, wherein the distinguishing characteristics is its note of happiness. The rooms, one hundred or more, are sunny and provided with every comfort; the prices are remarkably reasonable; the location is everything to be desired. But above all ordinary provisions (which are more than ample), that which makes the place most attractive and inviting is its all-pervading spirit of unostentatious Christian cheer. No intrigue of guest can trip any one in control or employ into a criticism of weather, God, or brother-man. The world is bright, everything is good, today is beautiful and tomorrow is full of dawn. Throughout the entire hotel—office, lobby, parlor, corridor, elevators, guest rooms, basement, storeroom (there is no bar)—this spirit is universal. Every person about the house—proprietor, manager, clerks, bell-boys, porter, telephone-girl, news-agent, and in associated cafe—is ever ready with a bright “Good Morning” or benedicting “Good Night,” with most cordial “Welcome” to the coming or generous “Auf Wiedersehn” to those most reluctantly going away. No hand is outstretched for insistent tip; everybody is attentive but never obtrusive; one needs scarcely to suggest in order to have a possible want more than anticipated. Indeed, all in attendance seem actuated in quiet helpfulness, as if only for the joy of service. Even the guests catch the spirit of the place and greet each other with more than passing courtesy. Certainly, more than ordinary persons find their way to the attractiveness of this retreat—lecturers, writers, musicians, artists, actors and others of interests exceptionally refined—and once there, they prolong their stay, leave with regret, and come again. This most unique guest place is known as the Hotel Herald; but it might still better be called The Traveler’s Home. Would that other hotels might imitate its appreciated example. After all, why should not a hotel be organized for the comfort of its guests?

*Preston W. Search,*

Easter Morn, 1914.

Educator, Author, Lecturer.

# Hotel Robins

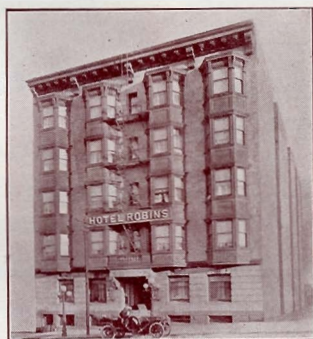
721 POST STREET

Near Jones Street

San Francisco

Take Sutter Street Car

DR. C. C. and R. BAKER, Proprietors



TELEPHONE

FRANKLIN 2670

Private Exchange Connecting All Apartments

CONTAINS 150 ROOMS. ELEGANTLY FURNISHED WITH  
ALL MODERN IMPROVEMENTS.

A FIRST-CLASS FAMILY HOTEL SITUATED IN THE MOST  
DESIRABLE PORTION OF SAN FRANCISCO.





# UVADA

## DOES IT

### CLEANS

# WHITE

## GLOVES, SHOES

## FELT HATS

And All Articles Made of White or Light Colored Leather, Canvas, Felt or Any Other Material that Cannot be Cleansed Without Injury by Washing.

**QUICK—CONVENIENT—THOROUGH**

AT ALL DRUG STORES

**Johnson-Locke Mercantile Co.**  
Exclusive Distributors SAN FRANCISCO

*The Lily drinking cup is a simple, sturdy, sanitary cup made of a single piece of tough white paper by ingenious automatic machinery and sterilized in the making. Little pleats hot pressed and sealed stiffen this cup and make it exactly three times as rigid as its rivals. It is the only cup with a real lip, smooth, round and comfortable—pasteless, tasteless and pure as its name. It is the nicest "individual" of all.*



**THE SALES AGENCY CO.**

210 California Street

SAN FRANCISCO