

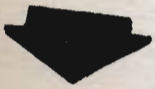


r o b e r t a .

director of unit 3
federated students, college of the pacific
and stockton college



wiltz's fanger



w i l s o n



robert a. wilson
first director of the federated students of the college of the pacific and stockton college...

bob is a native of berkeley, was a member of the swimming team before the war, served in the air force during ww 2, was northern california junior college ski champ in '47, representative of the sophomore and junior classes, member of rho lambda phi fraternity, and an art major...

sailing, swimming, and skiing use up whatever time he has to spare...



Wiltz

the head
of unit 3





jerry haines
finance commissioner, unit 3



marjorie heirs
social chairman, unit 3



roma porter-orvis
secretary, unit 3



chuck moore
finance commissioner, unit 2



lil mackey
social chairman, unit 2



pat black
secretary, unit 2



ray butler
director, unit 2

**federated
students
officers**

stockton college --
college of the pacific



dorothy eaton



eileen norton



dick limb



mrs. roma porter-orvis



jerry haines



herb williams



bill pinto



pietro davanis



paul petrie



marjorie heirs



bill cunningham



lois telcott



bob wilson

senate



norm ritter



sheldon nicolysen



mary clark



ray butler



john rose



don martin



lil mackey



howard rose



pat black



chuck moore



pat black -- secretary



jerry haines -- finance commissioner



marjorie heirs -- social chairman



mary clark -- rally commissioner



dot eaton -- publications commissioner



paul petrie -- commissioner of organization



john rose -- commissioner of drives



eileen norton -- assembly



sheldon nicolaysen -- representative at large



lois falcott -- associated women students



ray butler -- director unit ii



bob wilson -- director unit iii

x-committee

what is student affairs?

under the new federation plan each unit has its own student affairs commission; however, both unit two and three commissions have worked in very close cooperation this year in dealing in the problems of student citizenship and attempting to improve the general welfare of the students . . .

a wide variety of subjects have been studied and acted on, including: chaperones, assemblies, campus beauty, academic honesty, talks to college and life classes on the federated students association, the creation of the book exchange club, smoking on the campus, awards for the band, etc. . . .

in all matters the members have worked hard toward betterment of student activities . . .



unit two



don martin
chairman

student affairs committee



unit three



pete davanis
unit 3 rally commissioner

(not pictured)
mary clark
unit 2 rally commissioner



yell leaders

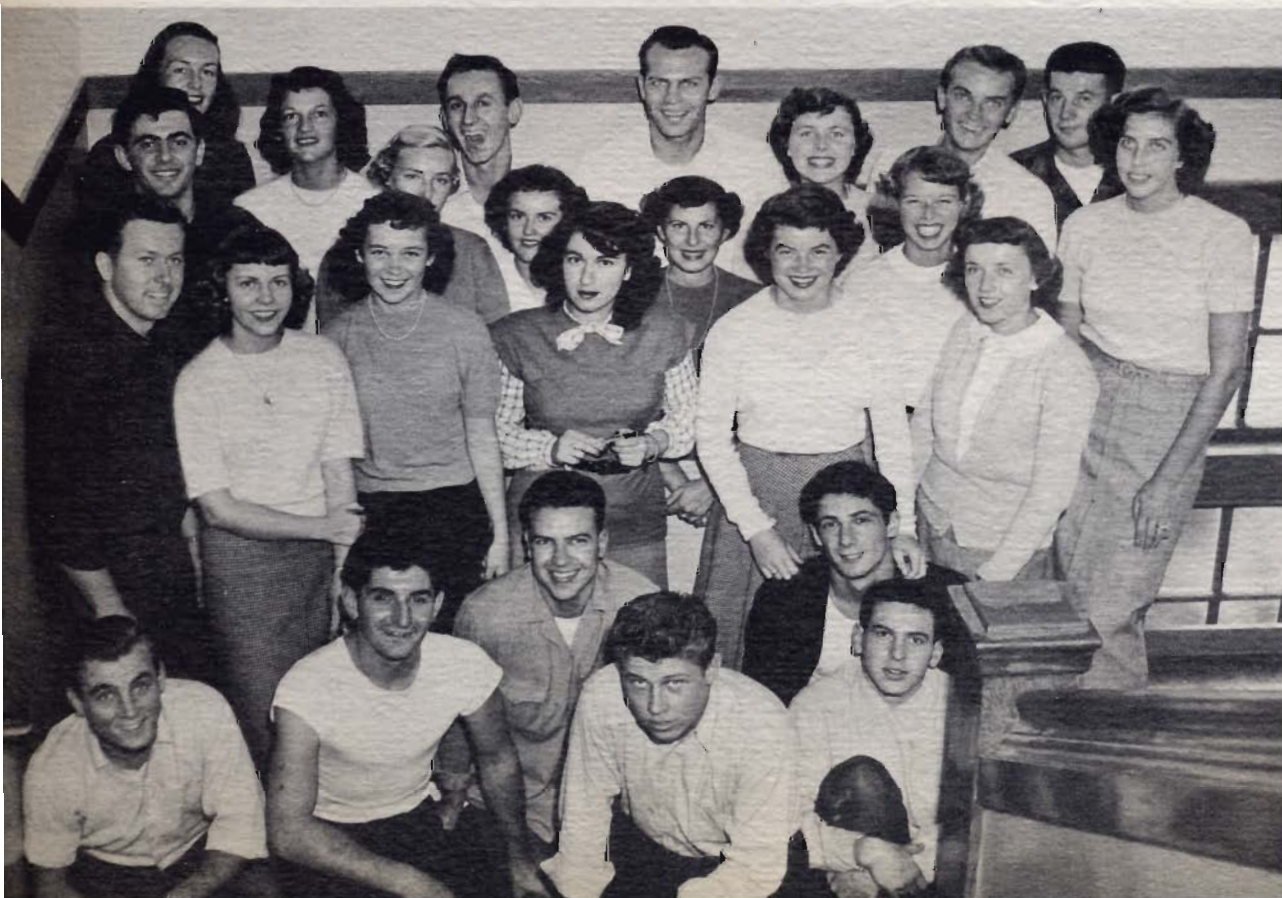
- chuck holst
- bill pinto
- frank mc clory



song leaders

- barbara lindhorst
- susanne hilson
- donna hilliard
- molly mc gowan
- lorraine harris

rally committee for '49





associated women students

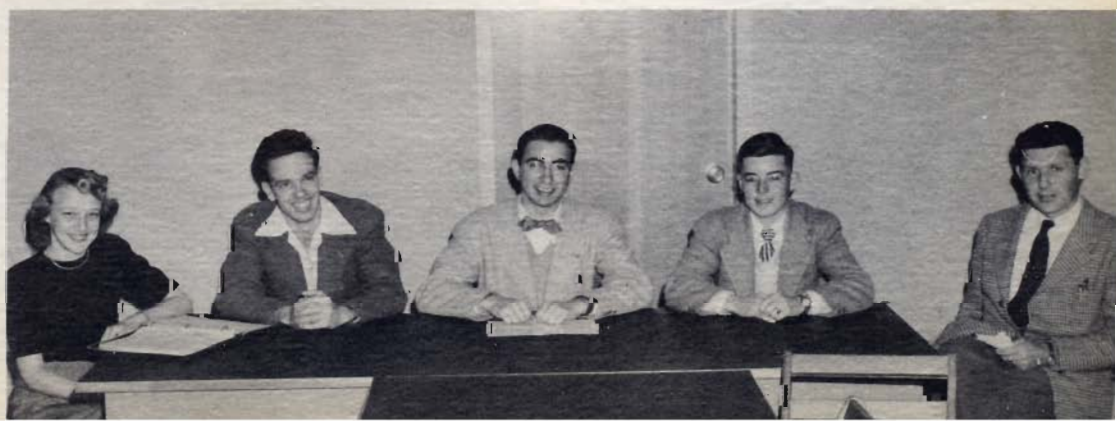


lois talcott
president



monroe hess
president, anderson "y" center

student court
frank wolf -- judge





tau kappa kappa

marie sanguinetti
renee nevraumont



zeta phi

cecilia casey
amy lou colvin (not pictured)



freshman hall

nance blackburn
doris shannon



west hall

phyllis finch
mary lundervold

alpha theta tau

nancie harrold
jean gallagher

epsilon lambda sigma

marion brimm
evelyn nauman



living group presidents

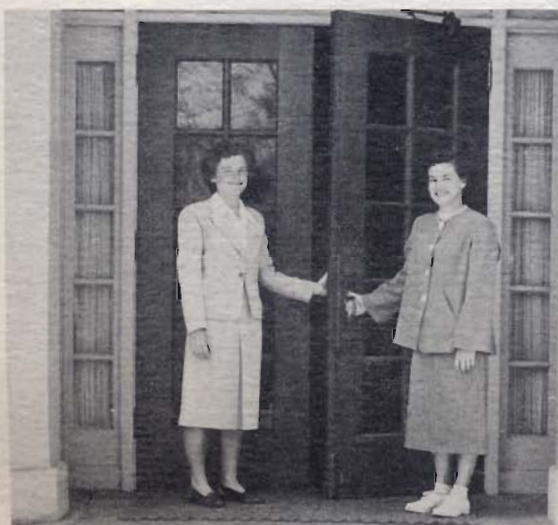


rho lambda phi

jim boyd
henry lavaroni

north hall

bob mc mahon
bob hoaker



south hall

lois lenfest
dorothy purkey



alpha kappa phi

glen smith
bob reed

omega phi alpha

john rohde
ted clark





gerald dearing
spring semester chairman



john rose



gloria cunningham



virginia gilmore



f. a. lindhorst
faculty advisor

virginia reese



earl collins
fall semester chairman



hupert p. lytle

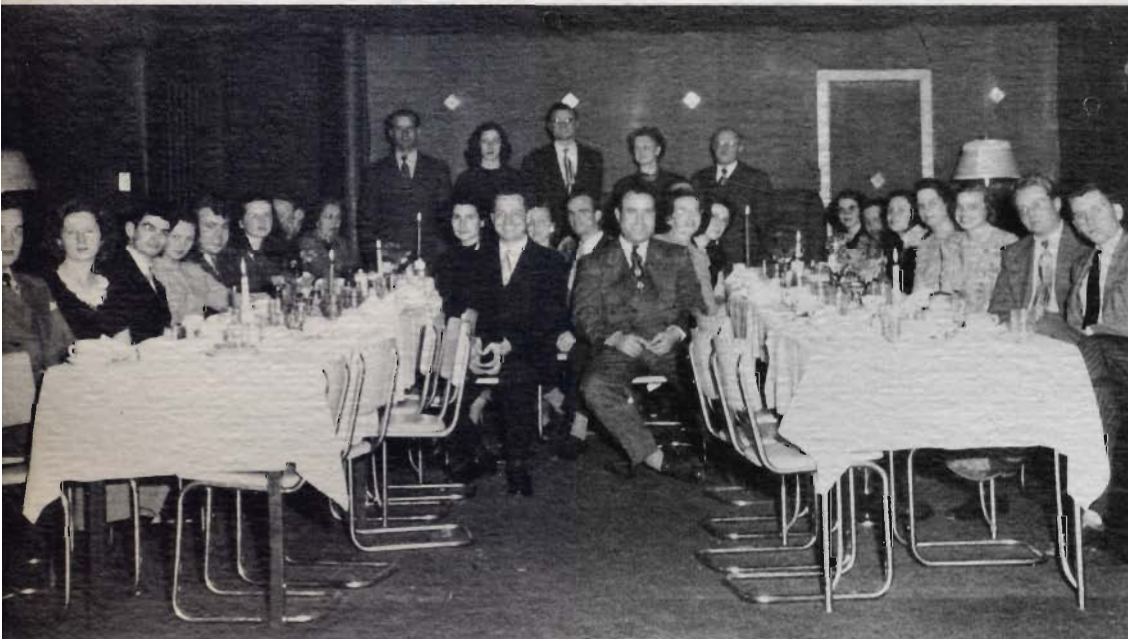
chapel committee

men's debate team



debate teams

pi kappa delta dinner



women's debate team

