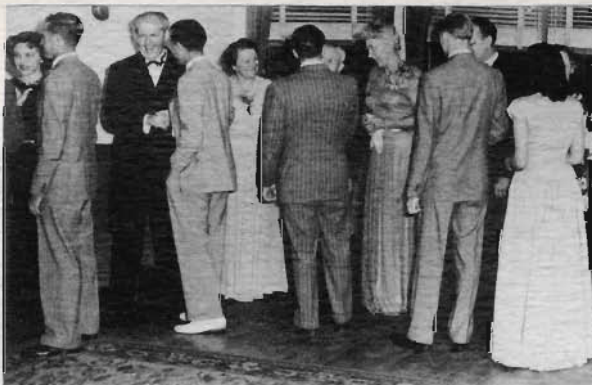






**president's
reception**





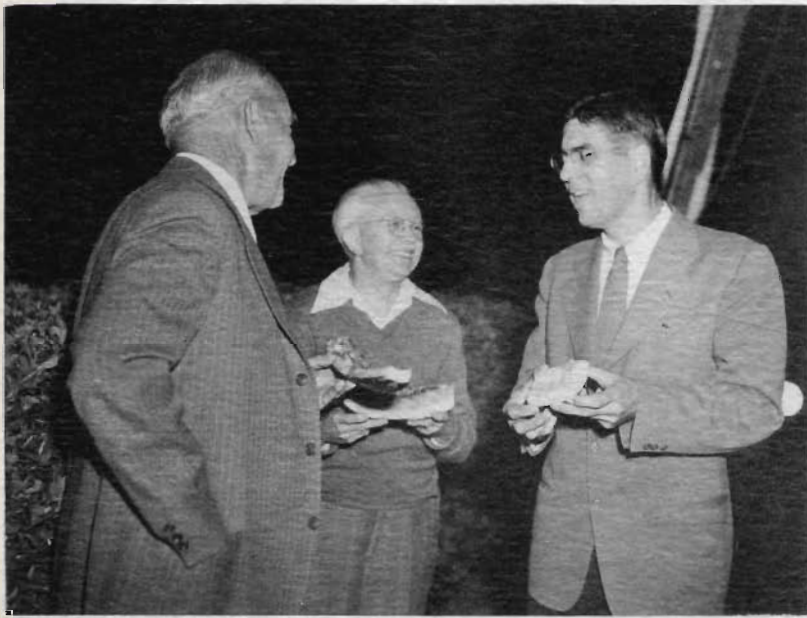
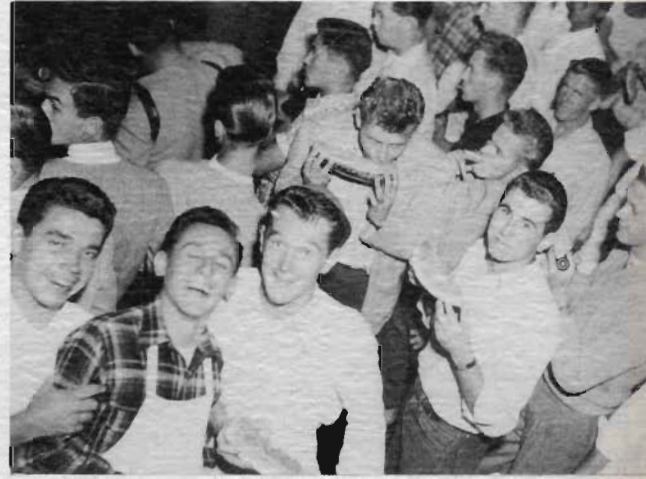
**pacific
downtown
rally**







rhizomia's watermelon feed





f s a ' s z o m b i e v i l l a g e

l u w a t t e r s





+ k k

r u s h w e e k



zeta phi



alpha theta tau

epsilon

+ k k





rhizomia



omega phi



alpha thete

archania



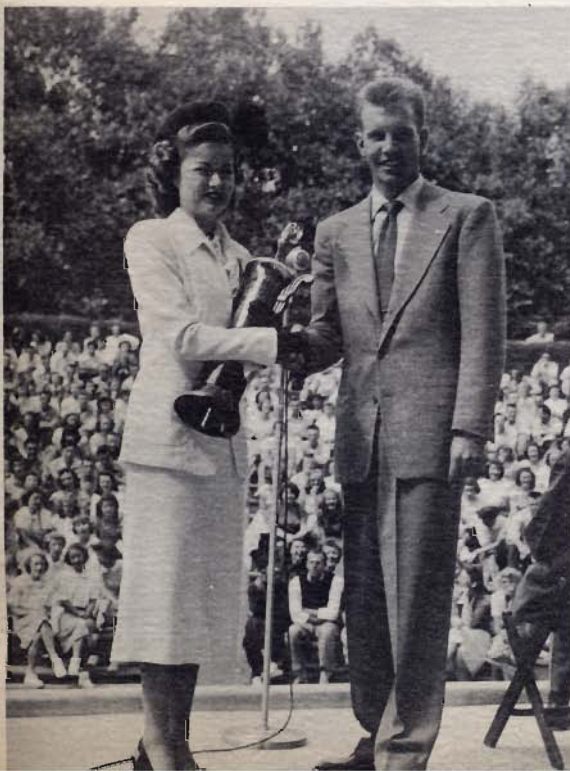
epsilon







**miss california
returns**



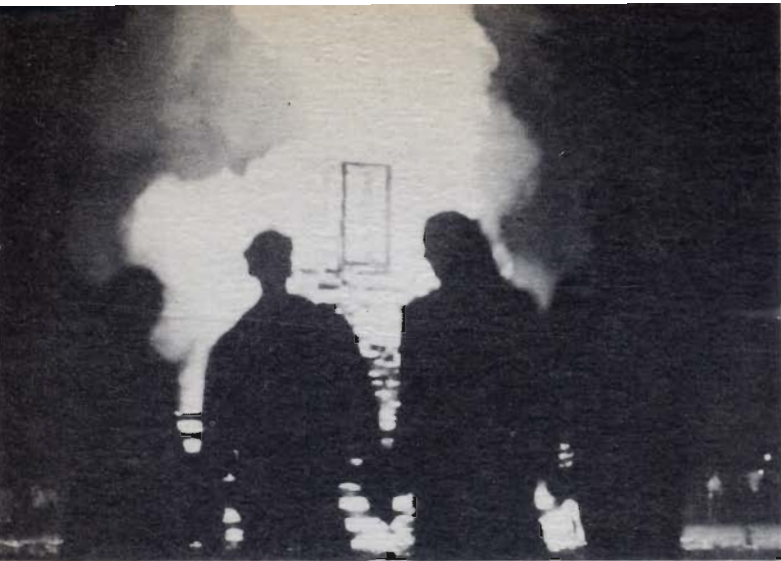


h o m e c o m i n g



bonfire





alpha thete's **pat smith**



candidates for homecoming sweetheart

back row, left to right

cecilia casey -- zeta phi

pat smith -- alpha thete

estelle jewell -- west

nanci rinehart -- epsilon

lorraine anderson -- manor

front row, left to right

carolyn watts -- south

mary tener -- tau gamma

nancy blackburn -- frosh

dolores rico -- tau kappa

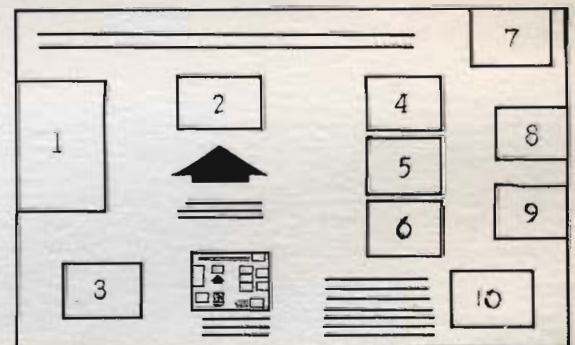


sweetheart of homecoming
pat smith

homecoming



prize winner was the rho
lambda phi theater . . .



- | | |
|--------------------|--------------------------|
| 1. alpha kappa phi | 6. west hall |
| 2. rho lambda phi | 7. zeta phi |
| 3. omega phi alpha | 8. tau kappa kappa |
| 4. freshman hall | 9. alpha theta tau |
| 5. south hall | 10. epsilon lambda sigma |

