



C. F. CURRY
SECRETARY OF STATE



W. E. WILLIAMS
STATE TREASURER



A. B. HYDE
CONTROLLER



U. S. WEBB
ATTORNEY GENERAL



WARREN S. PORTER
LIEUTENANT GOVERNOR



J. N. GILLETT
GOVERNOR



W. S. KINGBURY
QUARTERMASTER GENERAL



F. L. CAUGHY
CLERK SUPREME COURT



EDWARD HYATT
SUPT. PUBLIC INSTRUCTION



W. W. SHANNON
SUPT. STATE PRINTING

Justices of the Supreme Court



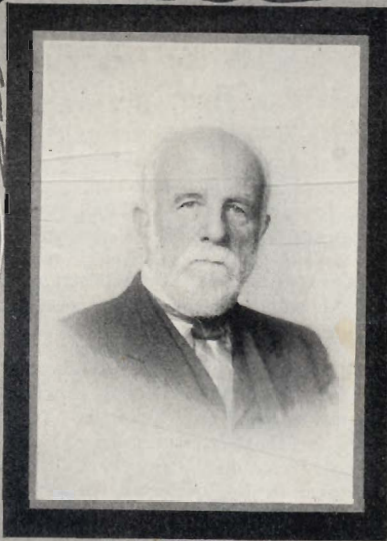
M. C. SLOSS
ASSOCIATE JUSTICE



LUCIEN SHAW
ASSOCIATE JUSTICE



F. M. ANGELLOTTI
ASSOCIATE JUSTICE



W. H. BEATTY
CHIEF JUSTICE



FREDERICK W. HERSHAW
ASSOCIATE JUSTICE



W. G. LORIGAN
ASSOCIATE JUSTICE



THOMAS B. MCFARLAND
ASSOCIATE JUSTICE



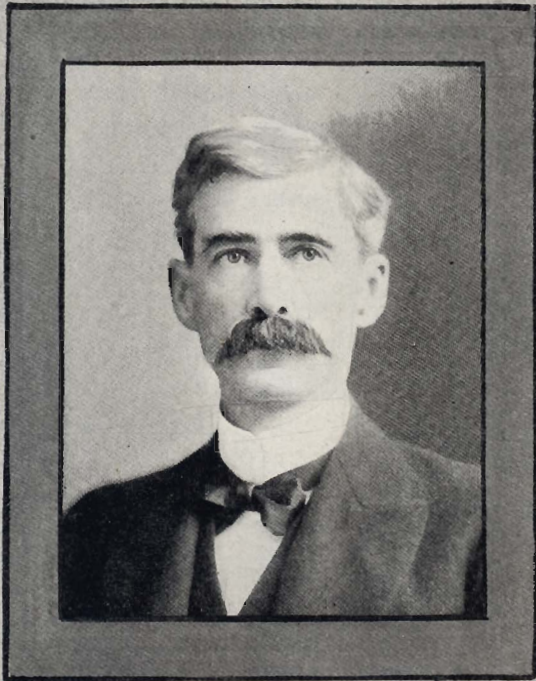
*J.A. COOPER
PRESIDING JUSTICE
1ST APPELLATE DISTRICT*



*S. PHALL
ASSOCIATE JUSTICE
1ST APPELLATE DISTRICT*



*FRANK H. KERRIGAN
ASSOCIATE JUSTICE
FIRST APPELLATE DISTRICT*



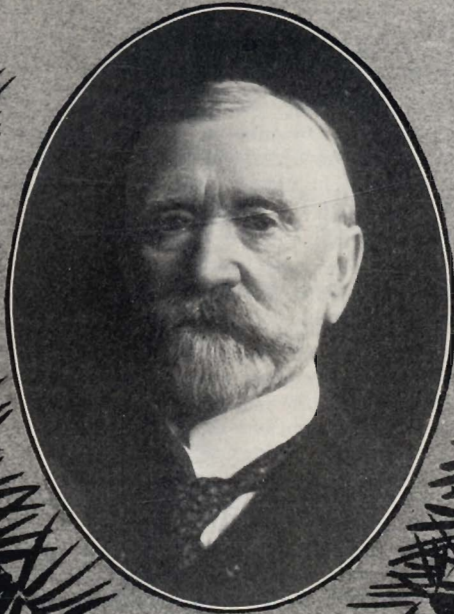
*M. T. ALLEN
PRESIDING JUSTICE
2ND APPELLATE DISTRICT*



*VICTOR E. SHAW
ASSOCIATE JUSTICE
2ND APPELLATE DISTRICT*



*JAMES W. TAGGART
ASSOCIATE JUSTICE
2ND APPELLATE DISTRICT*



N. P. CHIPMAN
PRESIDING JUSTICE
3RD APPELLATE DISTRICT



E. C. HART
ASSOCIATE JUSTICE
3RD APPELLATE DISTRICT



ALBERT G. BURNETT
ASSOCIATE JUSTICE
3RD APPELLATE DISTRICT



A. C. IRWIN
RAILROAD COMMISSIONER
FIRST DISTRICT



H. D. LOVELAND
RAILROAD COMMISSIONER
SECOND DISTRICT



THEO. SUMMERLAND
RAILROAD COMMISSIONER
THIRD DISTRICT



ALEXANDER BROWN
2ND. DISTRICT



R.E. COLLINS
3RD. DISTRICT

MEMBERS
OF THE
STATE BOARD
OF
EQUALIZATION



JEFF McELVAINE
4TH. DISTRICT



JOS. H. SCOTT
1ST. DISTRICT



S. C. SMITH
REP. IN CONGRESS
3RD DIST.



E. A. HAYES
REP. IN CONGRESS
5TH DIST.



JAS. McLACHLAN
REP. IN CONGRESS
7TH DIST.



Geo. C. PERKINS
U. S. SENATOR



FRANK FLINT
U. S. SENATOR



DISCAN MCKINLAY
REP. IN CONGRESS
2ND DIST.



JULIUS KAHN
REP. IN CONGRESS
4TH DIST.



W. F. ENGLEBRIGHT
REP. IN CONGRESS
1ST DIST.



J. R. KNOWLAND
REP. IN CONGRESS
3RD DIST.



J. C. NEEDHAM
REP. IN CONGRESS
6TH DIST.

SENATORS

CALIFORNIA
LEGISLATURE



GEORGE T. ROLLEY, 1ST DISTRICT



A. WEED, 2ND DISTRICT



J. B. IRISH, 3RD DISTRICT



J. B. SANFORD, 4TH DISTRICT



BENJ. F. RUSH, 5TH DISTRICT



A. C. BOYNTON, 6TH DISTRICT



J. A. MCKEE, 7TH DISTRICT



W. F. PRICE, 8TH DISTRICT



C. M. BELSHAW, 9TH DISTRICT



A. CAMINETTI, 10TH DISTRICT

SENATORS

CALIFORNIA LEGISLATURE



A.E. MUENTER. 11th DISTRICT



J.B. CURTIN. 12th DISTRICT



J.M. G. MATTOS. 13th DISTRICT



G.R. LUKENS. 15th DISTRICT



J.C. BATES. 14th DISTRICT



F.W. LEAVITT. 16th DISTRICT



D.J. REILEY. 18th DISTRICT



F.A. MARKEY. 17th DISTRICT



RICHARD J. WELCH. 19th DISTRICT



T.J. KENNEDY. 20th DISTRICT

SENATORS

CALIFORNIA
LEGISLATURE



EDWARD J. WOLFE, 21ST DISTRICT



GUS HARTMAN, 22ND DISTRICT



GEORGE B. REANE, 23RD DISTRICT



JOHN H. NELSON, 25TH DISTRICT



GEORGE W. CARTWRIGHT, 26TH DISTRICT



MARC ANTHONY, 24TH DISTRICT



MARSHALL BLACK, 28TH DISTRICT



S. H. RAMBO, 29TH DISTRICT



GEORGE S. WALKER, 27TH DISTRICT



HARRY M. WILLIS, 30TH DISTRICT

SENATORS

CALIFORNIA
LEGISLATURE



HENRY W. LYNCH. 31ST DISTRICT



E.O. MILLER. 32ND DISTRICT



C.B. GREENWELL. 33RD DISTRICT



HOWARD A. BROUGHTON. 35TH DISTRICT



W.H. SAVAGE. 34TH DISTRICT



CHAS. W. BELL. 36TH DISTRICT



H.S. MCCARTY. 38TH DISTRICT



HENRY E. CARTER. 37TH DISTRICT



JOHN H. ANDERSON. 39TH DISTRICT



LEROY A. WRIGHT. 40TH DISTRICT

MEMBERS OF ASSEMBLY



T.J. BERRY 1ST DISTRICT



CHARLES P. CUTTEN 2ND DISTRICT



JOHN W. MCCLELLAN 3RD DISTRICT



J. W. FINNEY 5TH DISTRICT



W.A. CORNISH 4TH DISTRICT



W.D. HELD 6TH DISTRICT



A.H. HEWITT 8TH DISTRICT



W. J. COSTAR 7TH DISTRICT



GEORGE W. ROOT 9TH DISTRICT



E.S. BIRDELL 10TH DISTRICT

MEMBERS OF

ASSEMBLY



GEORGE F. SNYDER, 11TH DISTRICT



F.H. SMYTH, 12TH DISTRICT



S.W. COLLISTER, 13TH DISTRICT



FRANK W. BUSH, 15TH DISTRICT



H.W.A. WESKE, 14TH DISTRICT



J.I. MCCONNELL, 16TH DISTRICT



FRANK J. O'BRIEN, 18TH DISTRICT



GROVE L. JOHNSON, 17TH DISTRICT



EDWARD J. LYNCH, 19TH DISTRICT



FRANK R. DEVLIN, 20TH DISTRICT

MEMBERS OF ASSEMBLY



P. C. CAMPBELL, 22ND DISTRICT



R. L. BEARDSLEE, 23RD DISTRICT



EDWARD I. BUTLER, 21ST DISTRICT



R. A. WHITMORE, 25TH DISTRICT



E. N. BAXTER, 26TH DISTRICT



ARTHUR E. PERCHAL, 24TH DISTRICT



PETER J. KELLY, 28TH DISTRICT



JOHN A. COLLEEN, 29TH DISTRICT



P. W. FORBES, 27TH DISTRICT



JAMES A. WILSON, 30TH DISTRICT

MEMBERS OF

ASSEMBLY



PATRICK J. BOYLE. 32ND DISTRICT



DANIEL J. TOOMEY. 31ST DISTRICT



PAUL F. FRATESSA. 33RD DISTRICT



F. HUGO HARTMAN. 35TH DISTRICT



JOHN McKEON. 34TH DISTRICT



JOHN WESSLING. 36TH DISTRICT



SAMUE H. BECKETT. 38TH DISTRICT



DENNIS W. BARRY. 37TH DISTRICT



CHARLES M. FISHER. 39TH DISTRICT



HENRY THOMPSON. 43RD DISTRICT

MEMBERS OF

ASSEMBLY



NATHAN C. COGHLAN. 41ST DISTRICT



SAMUEL T. KOHLMAN. 42ND DISTRICT



DOMINICK J. BEBAY. 43RD DISTRICT



LOUIS STROHL. 45TH DISTRICT



MEL VOGEL. 44TH DISTRICT



E. K. STROBRIDGE. 46TH DISTRICT



PHILIP M. WALSH. 48TH DISTRICT



FRANK OTIS. 47TH DISTRICT



J. J. BURKE. 49TH DISTRICT



JOHN W. STETSON. 50TH DISTRICT

MEMBERS OF

ASSEMBLY



JOHN M. ESHLEMAN, 52ND DISTRICT



GEORGE J. HANS, 51ST DISTRICT



RICHARD H. JURY, 53RD DISTRICT



J. T. HIGGINS, 55TH DISTRICT



HARRY C. LUCAS, 54TH DISTRICT



GUY W. SMITH, 56TH DISTRICT



J. O. DAVIS, 58TH DISTRICT



C. C. SPAULDING, 57TH DISTRICT



W. J. WIGGATZ, 58TH DISTRICT



W. E. CHANDLER, 60TH DISTRICT

MEMBERS OF

ASSEMBLY



W. L. MCGUIRE, 62ND DISTRICT



WARREN M. JOHN, 63RD DISTRICT



A. M. DREW, 61ST DISTRICT



GEORGE L. SACKETT, 65TH DISTRICT



H. W. MCMULLIN, 66TH DISTRICT



E. M. PYLE, 64TH DISTRICT



P. F. COGSWELL, 68TH DISTRICT



N. W. THOMPSON, 69TH DISTRICT



GIDEON S. CASE, 67TH DISTRICT



WALTER R. LEEDS, 70TH DISTRICT

MEMBERS OF ASSEMBLY



P.A. STANTON, 71ST DISTRICT



FRED E. PIERCE, 72ND DISTRICT



J.P. TRANSUE, 73RD DISTRICT



PERCY V. HAMMON, 75TH DISTRICT



ROBSON O. BELL, 74TH DISTRICT



W.E. LEMON, 76TH DISTRICT



MIGUEL ESTUDILLO, 78TH DISTRICT



CLYDE BISHOP, 77TH DISTRICT



W.F. LUDINGTON, 79TH DISTRICT



PERCY A. JOHNSON, 80TH DISTRICT



LEWIS A. HILBORN
SECRETARY OF THE
SENATE



J. W. KAVANAGH
ASSISTANT SECRETARY
OF THE SENATE



CLID LLOYD
CHIEF CLERK OF
THE ASSEMBLY



REV. CH. DARLING
CHAPLAIN OF THE
SENATE



DONN SHIELDS
ASSISTANT SECRETARY
OF THE SENATE



REV. P. H. WILLIS
CHAPLAIN OF THE
ASSEMBLY



J. LOUIS MARTIN
SERGEANT AT ARMS
OF THE SENATE



THOMAS G. WALKER
ASSISTANT CLERK
OF THE ASSEMBLY



JOHN STAFFORD
SERGEANT AT ARMS
OF THE ASSEMBLY